

RESEARCH ARTICLE

Open Access

A study in Polish patients with cardiomyopathy emphasizes pathogenicity of phospholamban (*PLN*) mutations at amino acid position 9 and low penetrance of heterozygous null *PLN* mutations

Grażyna T Truszkowska¹, Zofia T Bilińska^{2*}, Joanna Kosińska³, Justyna Śleszycka⁴, Małgorzata Rydzanicz³, Małgorzata Sobieszczńska-Małek⁵, Maria Franaszczyk¹, Maria Bilińska⁶, Piotr Stawiński⁷, Ewa Michalak², Łukasz A Małek⁸, Przemysław Chmielewski², Bogna Foss-Nieradko², Marcin M Machnicki⁷, Tomasz Stokłosa⁷, Joanna Ponińska¹, Łukasz Szumowski⁶, Jacek Grzybowski⁴, Jerzy Piwoński⁹, Wojciech Drygas⁹, Tomasz Zieliński⁵ and Rafał Płoski^{3*}

Abstract

Background: In humans mutations in the *PLN* gene, encoding phospholamban - a regulator of sarcoplasmic reticulum calcium ATPase (SERCA), cause cardiomyopathy with prevalence depending on the population. Our purpose was to identify *PLN* mutations in Polish cardiomyopathy patients.

Methods: We studied 161 unrelated subjects referred for genetic testing for cardiomyopathies: 135 with dilated cardiomyopathy, 22 with hypertrophic cardiomyopathy and 4 with other cardiomyopathies. In 23 subjects multiple genes were sequenced by next generation sequencing and in all subjects *PLN* exons were analyzed by Sanger sequencing. Control group included 200 healthy subjects matched with patients for ethnicity, sex and age. Large deletions/insertions were screened by real time polymerase chain reaction.

Results: We detected three different heterozygous mutations in the *PLN* gene: a novel null c.9_10insA:(p.Val4Serfs*15) variant and two missense variants: c.25C > T:(p.Arg9Cys) and c.26G > T:(p.Arg9Leu). The (p.Val4Serfs*15) variant occurred in the patient with Wolff-Parkinson-White syndrome in whom the diagnosis of cardiomyopathy was not confirmed and his mother who had concentric left ventricular remodeling but normal left ventricular mass and function. We did not detect large deletions/insertions in *PLN* in cohort studied.

Conclusions: In Poland, similar to most populations, *PLN* mutations rarely cause cardiomyopathy. The 9th *PLN* residue is apparently a mutation hot spot whereas a single dose of c.9_10insA, and likely other null *PLN* mutations, cause the disease only with low penetrance or are not pathogenic.

Keywords: Dilated cardiomyopathy, Hypertrophic cardiomyopathy, Genetic testing, Phospholamban, *PLN*, Mutation

* Correspondence: zbilinska@ikard.pl; rploski@wp.pl

²Unit for Screening Studies in Inherited Cardiovascular Diseases, Institute of Cardiology, ul. Alpejska 42, 04-628 Warszawa, Poland

³Department of Medical Genetics, Warsaw Medical University, ul. Pawińskiego 3C, 02-106 Warszawa, Poland

Full list of author information is available at the end of the article

Background

To date over 50 genes have been linked to cardiomyopathies, including *PLN* - a reversible inhibitor of cardiac sarcoplasmic reticulum calcium ATPase isoform 2a (SERCA2a). SERCA is responsible for around 70% of Ca^{2+} reuptake from cytosol into sarcoplasmic reticulum and is a key regulator of cardiac muscle contractility [1]. *PLN* is a small 52 amino acid protein consisting of cytosolic domain IA (amino acids 1–20), unstructured domain IB (aa 21–30) and domain II which forms transmembrane helix. *PLN* is embedded in sarcoplasmic reticulum (SR) membrane close to the SERCA protein. *PLN* regulation of SERCA2a activity depends on *PLN* phosphorylation and cytosolic Ca^{2+} concentrations. *PLN* can be phosphorylated at Serine 16 by the cAMP-dependent protein kinase (PKA) and at Tyrosine 17 by Ca^{2+} - calmodulin-dependent protein kinase (CAMKII) [2] or serine/threonine kinase Akt, also referred to as protein kinase B [3]. In the dephosphorylated state *PLN* binds to SERCA2a decreasing its affinity for Ca^{2+} . The monomer form of *PLN* inhibits SERCA2a calcium re-uptake from cytosol into the SR [4] whereas phosphorylation by PKA enhances the formation of *PLN* pentamers and relieves the inhibition of SERCA2a. Mutations in *PLN* have been found in dilated cardiomyopathy (DCM), arrhythmogenic right ventricular cardiomyopathy (ARVC) and hypertrophic cardiomyopathy (HCM) patients [5-7]. So far only one c.T116G:(p.Leu39Ter) truncating *PLN* mutation has been described [8]. The prevalence of *PLN* mutations in DCM patients is generally below 1.5%, but in Dutch population the c.40_42delAGA:(p.Arg14del) mutation was found in 12% of DCM and 15% of ARVC patients [5,6]. As this has not been studied before, the aim of our project was to determine the prevalence of *PLN* mutations in Polish cardiomyopathy patients.

Methods

Patients

The study cohort was drawn from all index patients referred for clinical and genetic testing for cardiomyopathies from 1st January, 2010 to 31st March 2014 to the Unit for Screening Studies in Inherited Cardiovascular Diseases. It consisted of 161 unrelated probands (30.4% females, mean age 40.9 year, standard deviation 12.9), 135 with DCM, including 20 heart transplant recipients, 22 with HCM and 4 with a diagnosis of other cardiomyopathies (three with left ventricular non-compaction (LVNC) and one with restrictive cardiomyopathy (RCM)). The diagnosis was based on ESC criteria [9] after a careful examination of medical records and clinical work-up including standard 12-lead electrocardiogram (ECG) and two-dimensional Doppler echocardiography in all probands except for heart transplant recipients, whose medical records were reviewed retrospectively. Further

diagnostic tests - 24-hour Holter ECG monitoring, exercise stress test were performed if necessary. Creatine phosphokinase (CPK) concentration was obtained whenever possible. All DCM probands underwent either coronary angiography or, more recently, coronary computed tomography angiography (CTA). Cardiac magnetic resonance (CMR) imaging was performed in selected patients at the discretion of the referring physician. Cardiomyopathy was considered familial when two subjects in a family met the diagnostic criteria for the same cardiomyopathy as proband's.

Controls

Age and sex matched control group (N = 200, 30% females, mean age 40.5 years with SD 13.0) was selected from WOBASZ II study, which is a cross-sectional population-based study aimed at delineation of classical and genetic risk factors for cardiovascular diseases. The WOBASZ II participants were randomly chosen from the Polish population register of permanent residents aged 20–74 years from the whole territory of Poland [10]. Each patient and their relative(s) gave their written informed consent to participate in the study in accordance with the Declaration of Helsinki and the study protocol was approved by the local bioethics committee (Ethics Committee of the Cardinal Wyszyński Institute of Cardiology).

Genetic testing

DNA was extracted from the peripheral blood by phenol extraction. Multiple gene screening was initially performed by next-generation sequencing (NGS) in 23 patients (in 15 patients whole exome sequencing (WES) was performed; the remaining eight subjects were tested by targeted sequencing of a panel of 35 genes involved in cardiomyopathies, Additional file 1). WES was performed on HiSeq 1500 using TruSeq Exome Enrichment Kit (Illumina) as described previously [11]. Targeted sequencing of 35 genes was performed using a custom design SeqCap EZ Choice Library (Roche NimbleGen) of ~0,34 Mb target genomic sequences. The whole procedure was carried out according to SeqCap EZ Library SR User's Guide v.3.0, with modifications, briefly described below. 1 µg of genomic DNA was fragmented by a 2 min sonication using Covaris M220. Genomic libraries were prepared using TruSeq Library Preparation Kit (Illumina), according to the low-throughput protocol (revision C, June 2011) with gel-free size selection method employing Agencourt AMPure XP (Beckman Coulter) magnetic beads. Sample libraries were pooled (12-plex) to a total of 1 µg and hybridized with SeqCap EZ probes for 3 days at 47°C. Captured sequences were purified with Dynabeads M-270 Streptavidin (Invitrogen), amplified, cleaned up and proceeded to sequencing. During the procedure,

sample libraries and post-capture libraries were amplified using Kapa HotStart ReadyMix (Kapa Biosystems) instead of the recommended PCR master mix and cleaned up using AMPure XP beads. Libraries were quantified fluorometrically using Qubit 2.0 (Life Technologies) and quality assessment was done on 2100 Bioanalyser (Agilent Technologies). The libraries were sequenced on HiSeq 1500 (Illumina).

Prompted by finding of a mutation in the *PLN* gene c.26G>T:(p.Arg9Leu) in one patient studied by WES we performed single-gene testing of *PLN* by Sanger sequencing in additional 138 cardiomyopathy patients as well as the 23 subjects initially studied by NGS (161 subjects in total). Primers were designed to include the promoter region (up to -316 bp upstream of the transcript start site) with the first (non-coding) exon, the second (protein coding) exon and the splice sites (Additional file 2). In the control group Sanger sequencing was limited to *PLN* exon 2 (the only protein coding *PLN* exon). The PCR conditions were: 5 min of initial denaturation at 95°C, followed by 32 cycles of 30 sec at 95°C, 55 sec at 62°C, 1 min at 72°C and final extension of 10 min at 72°C. PCR products were examined on 2 % agarose gels, cleaned-up with exonuclease I and alkaline phosphatase (Thermo Scientific) and sequenced using a 3500xL Genetic Analyzer (Applied Biosystems) and BigDye Terminator v3.1 Cycle Sequencing Kit (Applied Biosystems) according to the manufacturer's instructions. The results were analyzed with Variant Reporter 1.1 Software (Applied Biosystems).

Among the patients we also performed an analysis of copy number variations (CNV) in *PLN* by real-time PCR (RT-PCR) using 7500 Real-Time PCR Systems (Applied Biosystems). Reactions were run in duplicates in 15 µl reaction volume including MESA GREEN MasterMix Plus, Low ROX (Eurogentec, Belgium), with final primer concentrations in reaction: forward 133 nM, reverse 400 nM and 20 ng of DNA. Albumin (*ALB*) was used as a reference gene. In each assay control DNA and no-template control were included. The PCR conditions were: 10 min at 95°C, followed by 40 cycles of denaturation at 95°C for 15 sec and annealing and elongation step at 60°C for 1 min. Each amplification stage was followed by dissociation stage: 95°C for 15 sec, 60°C for 1 min. Data were analyzed using the 7500 analysis software (version 1.2.3) and calculated using $\Delta\Delta C_t$ method.

Results

We identified three heterozygous variants in exon 2 of *PLN* [NM_002667.3]: a novel c.9_10insA:(p.Val4Serfs*15) and two previously described: c.25C > T:(p.Arg9Cys) (rs111033559) and c.26G > T:(p.Arg9Leu). Arg9Leu was found by WES and the other two variants by Sanger sequencing. All variants were confirmed by Sanger

sequencing of two DNA samples from the same individual, including a sample isolated from independently collected blood. Neither these nor any other protein coding *PLN* variants were found in age and sex matched control group of 200 individuals.

PLN c.9_10insA:(p.Val4Serfs*15)

The novel *PLN*:c.9_10insA:(p.Val4Serfs*15) variant was identified in a 31-year-old male patient treated with radio-frequency ablation for Wolf-Parkinson-White (WPW) syndrome. He was initially diagnosed with a suspicion of LVNC but mild hypertrabeculation in the LV apex did not meet the criteria for LVNC. His left ventricular size and function were normal (LVEF = 62%). Ulcerative colitis was a coexistent disease. His both parents were asymptomatic, and normal in 12-lead standard electrocardiogram and two-dimensional Doppler echocardiogram. His 51-year-old mother, also the variant carrier, was found to have high normal left ventricular ejection fraction of 76% and concentric left ventricular remodelling, left ventricular mass was normal (72 g/m²). Chromatogram illustrating *PLN* c.9_10insA:(p.Val4Serfs*15) variant is shown in Figure 1A.

PLN c.25C > T:(p.Arg9Cys)

The c.25C > T:(p.Arg9Cys) mutation was identified in a 30-year-old female who had had acute onset of DCM following viral-like syndrome at the age of 21 years with subsequent exacerbations of heart failure not responding to standard treatment and leading to heart transplant at the age of 22 years. There was no DCM or sudden cardiac deaths in the family. Her parents and two siblings are asymptomatic and refused genetic testing. Chromatogram illustrating Arg9Cys mutation is shown in Figure 1B.

PLN c.26G > T:(p.Arg9Leu)

In WES mean coverage of DNA sample with the Arg9Leu mutation was 62-fold with 83.54% of the targeted exons covered at least 10× and 78.8% covered at least 20×. The total number of variants in the proband was 64754, of which 3813 were considered rare (frequency in the database from NHLBI GO exome sequencing project (ESP) [12] less-than or equal to 0.001 and frequency in our in-house database of 200 exomes less or equal to 0.01. Further filtering for variants in genes linked with DCM from Human Gene Mutation Database (HGMD) [13] revealed 48 variants, of which two were located in exons: *PLN*: c.26G > T:(p.Arg9Leu) in phospholamban and *DES*:c.665G > A:(p.Arg222His) (rs367961979) in desmin. Both variants were found in the proband III-1 and his daughter IV-2 with DCM and absent in two healthy family members III-4 and IV-3 (Figure 2). The proband at the time of genetic inquest was 55 years old,

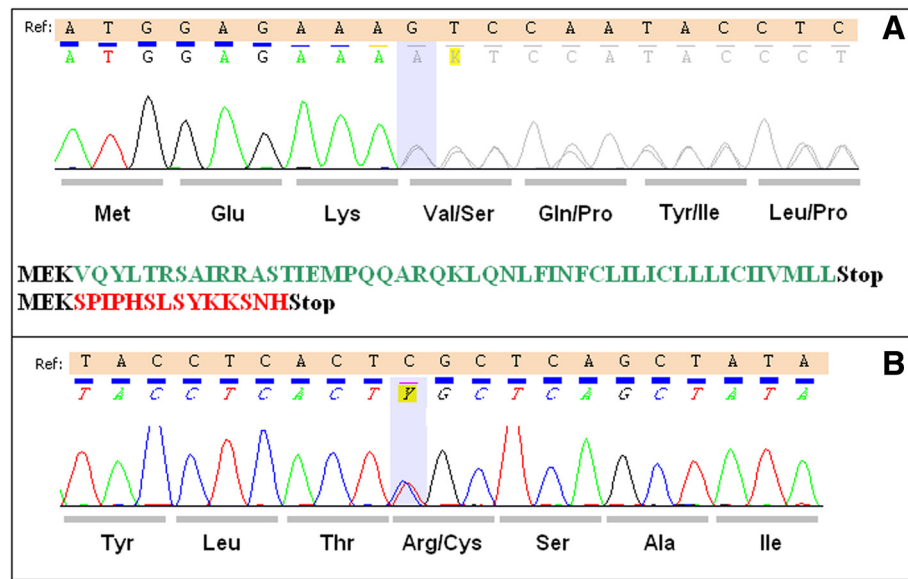


Figure 1 Chromatograms of *PLN* c.9_10insA:(p.Val4Serfs*15) and c.25C > T:p.Arg9Cys variants. Chromatograms from direct sequencing by the Sanger method showing the c.9_10insA:(p.Val4Serfs*15) (A) and c.25C > T:p.Arg9Cys (B) variants. Below chromatogram A predicted effect of c.9_10insA:(p.Val4Serfs*15) variant on *PLN* protein sequence. Black font color denotes unaffected amino acid residues, green font original *PLN* amino acid sequence, red font altered amino acid residues of *PLN* in c.9_10insA:(p.Val4Serfs*15) variant.

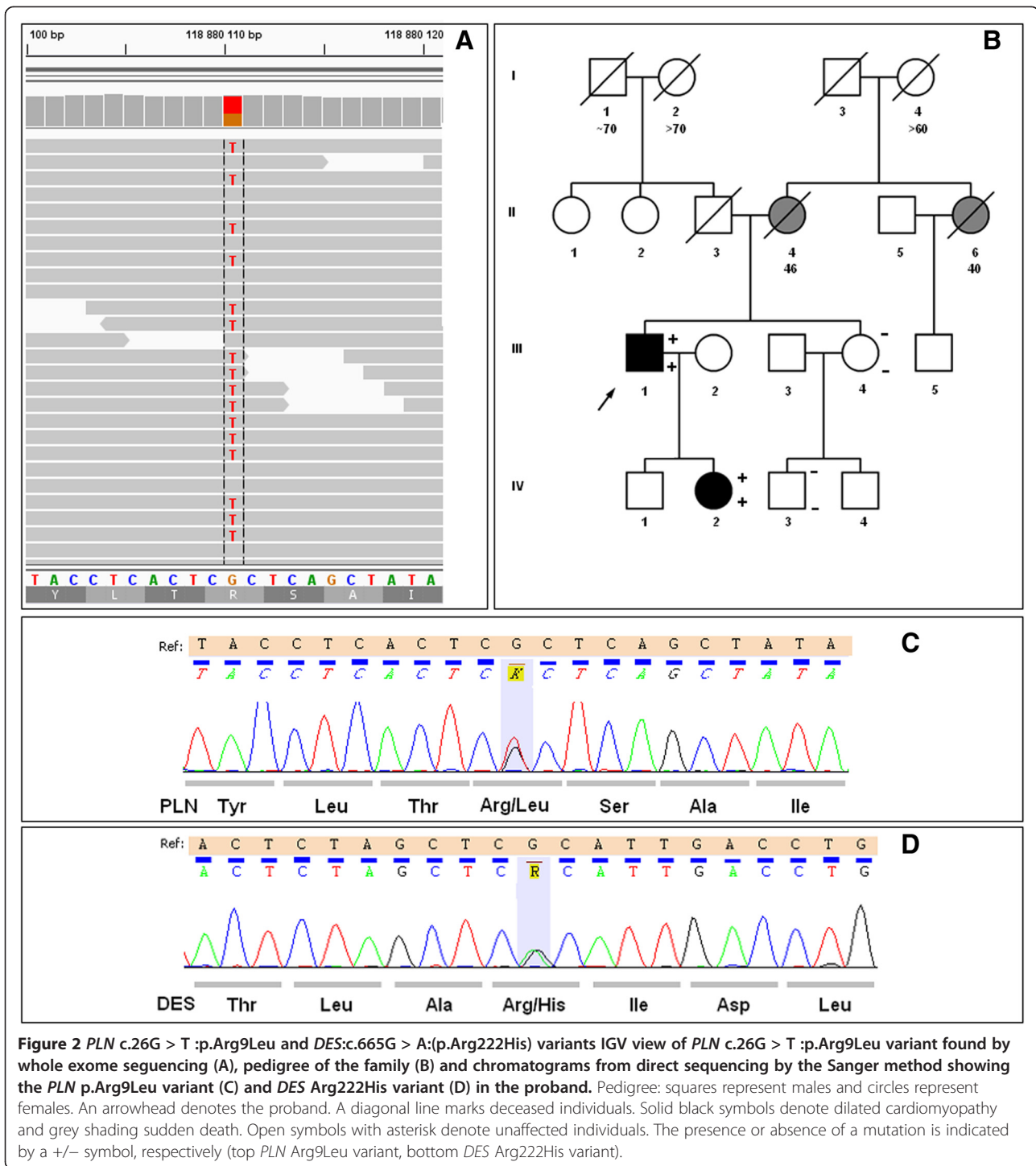
DCM was diagnosed at the age of 51. At the onset of the disease pulmonary edema in the course of atrial flutter (165/min) was present with dilated left ventricle 6.7 cm, decreased LVEF 30% and moderate mitral insufficiency on echocardiography. On intravenous amiodarone the patient returned to sinus rhythm. Additionally, on 12-lead ECG low voltage QRS complexes were found in the limb leads with QRS width of 104 ms (Figure 3A). Coronary angiography was normal. During a 4-year follow-up progression of heart failure symptoms, paroxysmal atrial fibrillation and ventricular arrhythmia 1900Vex/24 h with 5 episodes of nonsustained ventricular tachycardia (nsVT) (4 beats) occurred despite standard heart failure treatment plus amiodarone. Severe mitral valve regurgitation (vena contracta of 8 mm) due to restriction of the mitral valve leaflets was present (Figure 4). The patient refused to undergo either mitral valve insufficiency correction or implantable cardioverter-defibrillator (ICD) therapy. NT-proBNP and troponin I serum concentrations were constantly elevated (914.30 pg/mL and 0.136 ng/mL, respectively). The only comorbidity was hyperlipidemia. The first manifestations of the disease in the proband's daughter were fatigue and frequent palpitations at 30 years of age. There were no abnormalities on physical examination at admission and no cardiovascular risk factors. Low voltage QRS complexes in all leads and ST-T changes in leads V4-V6 were found (Figure 3B). All laboratory tests were normal with the exception of NT-proBNP, whose concentration was mildly elevated (586 pg/mL). On 24 h-Holter ECG monitoring frequent ventricular ectopy 3430/24 h with 3 episodes of

nsVT (3–6 beats) was observed. Echocardiogram revealed dilated left ventricle 60 mm, %LVE 128.3 global hypokinesis of the left ventricle with LVEF of 35%, slight mitral insufficiency, normal RV function and non-dilated atria. CMR showed increased left ventricular volume and marked hypokinesis of the left ventricle [LVEF of 33%, LVEDV/BSA 135 ml/m² (N: 62–96), normal LV mass 60 g/m² (N:47–77) (Figure 5)]. Contrast enhanced CMR imaging showed diffuse areas of midwall late gadolinium enhancement in the anterior wall and interventricular septum, which are typical of non-ischemic origin and may be observed in various diseases such as DCM, myocarditis or HCM [14]. The patient received standard heart failure treatment. During a two-year follow-up while on metoprolol tartate 100 mg and ramipril 7.5 mg, the number of ventricular arrhythmia episodes increased 10191 Vex/24 h, 34nsVT, 540 couplets while in sinus rhythm 45–116, mean 73 bpm. The patient had clinical indications to ICD implantation, however she did not agree. The proband's mother and the mother's sister died suddenly at age 46 and 40, respectively.

In 19/161 patients the *PLN*:c.-36 A > C (rs77186188) promoter variant was found (heterozygous in 18 patients and one homozygous, allelic frequency 6.21%). In another DCM patient heterozygous 5'UTR variant *PLN*:c.-56C > T (rs189611501) was found.

Discussion

While screening 161 Polish patients referred for clinical cardiomyopathy diagnosis for *PLN* single nucleotide



variation (SNV) we have found three heterozygous variants of note: a novel c.9_10insA:(p.Val4Serfs*15) and two previously described variants - c.25C > T:(p.Arg9Cys) and c.26G > T:(p.Arg9Leu). In the controls there were no variants in the *PLN* coding sequence.

The novel c.9_10insA:(p.Val4Serfs*15) variant was found in a patient with WPW syndrome with suspected

but eventually not confirmed diagnosis of LVNC and his mother with normal LVEF and concentric left ventricular remodeling. The c.9_10insA is predicted to encode a 17 amino acid protein with only 3 initial residues corresponding to *PLN* sequence (Figure 1A). Thus, the c.9_10insA mutation can be regarded as a null mutation similar to complete deletion, which so far has not been

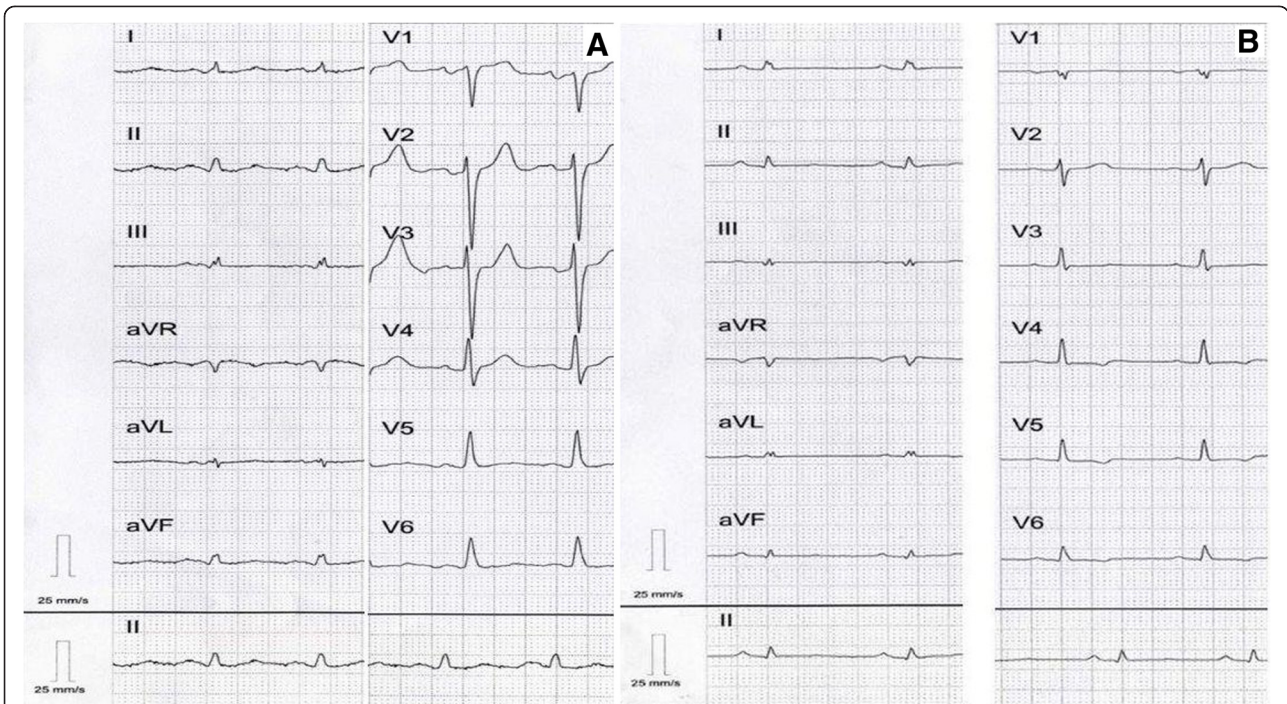


Figure 3 Standard 12-lead electrocardiogram in the proband (A) and his daughter (B). Regular sinus rhythm in both subjects, low QRS voltage in limb leads (A), and in all leads (B). In addition, in the proband (A) ST-T changes in inferolateral leads as well as left atrial enlargement. Diffuse ST-T changes were identified in the proband's daughter (B).

described in humans. The only described variant leading to a truncated PLN protein is c.116A > C:p.Leu39Ter (rs111033560) [8]. Although no clear function of *PLN* Leu39Ter could be demonstrated, the truncated protein was detected in transfected human embryonic kidney (HEK) 293 cells raising a possibility that it may be expressed and exert pathologic effects and thus should not be regarded as a *bona fide* null. Whereas pathogenicity

of p.Leu39Ter homozygosity is supported by two siblings who both had DCM and HTx [8], the effect of a single dose of p.Leu39Ter is less clear. Once the probands were excluded, there were a total of 16 described family members with Leu39Ter mutation from whom only two were clearly affected (DCM and HCM, respectively), four had left ventricular hypertrophy and ten were asymptomatic [7,8]. However, the subject with HCM was a 3-year-old

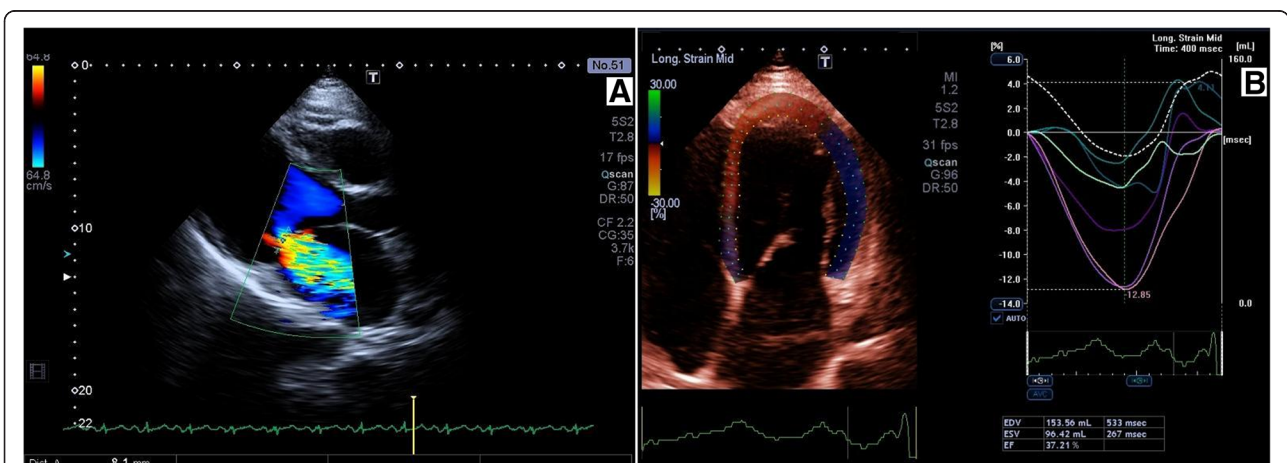


Figure 4 Two-dimensional echocardiographic study of proband III-1. **A:** Parasternal long axis view in systole with color flow Doppler. Severe mitral valve regurgitation (vena contracta of 8 mm) due to restriction of the mitral valve leaflets. **B:** Apical four-chamber view, speckle tracking method. Enlarged left ventricle, left ventricular end-diastolic volume (LVEDV 154 ml) with low ejection fraction (LVEF 37%). Enlarged left atrium chamber.

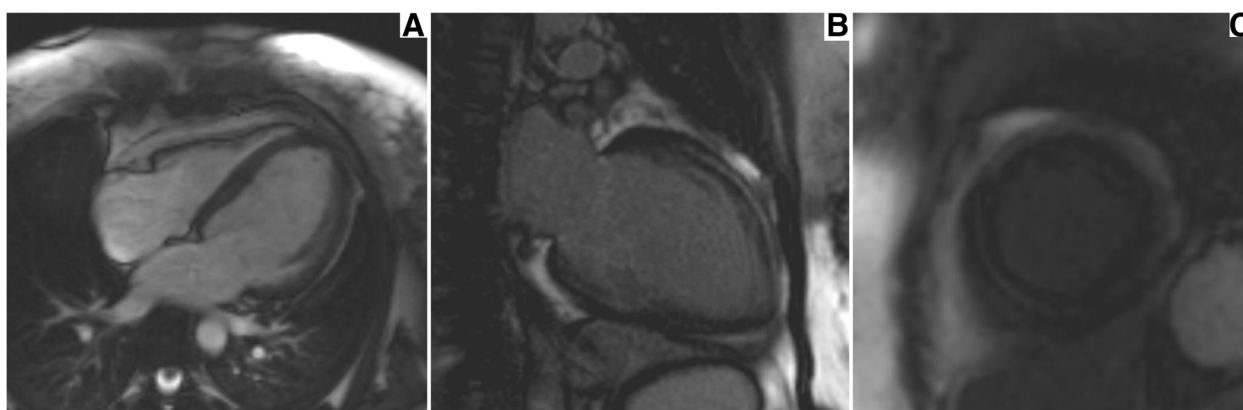


Figure 5 Cardiac magnetic resonance cine image of proband's daughter IV-2, 4-chamber image (A) demonstrating dilated left ventricle in end-diastole, late gadolinium enhancement images in 2-chamber view (B) and mid-ventricular short axis view (C) showing mid wall enhancement of the anterior and inferior wall (B) and interventricular septum (C).

child who inherited Leu39Ter mutation from her healthy 38-year-old mother raising a possibility that the *PLN* defect was not casually linked with HCM in this family [7]. Single dose of Leu39Ter has also been found in a 57-year-old female with a normal ECG, thickened aortic valves, moderate aortic regurgitation but normal LVEF (60%) from ClinVar project [15]. Thus, our results and the data reported in the literature indicate that in humans heterozygous null *PLN* mutations may have low penetrance or maybe are not pathogenic. This is a clinically important issue as it emphasizes that in dominant disorders null gene variants should not be presumed to be pathogenic without additional evidence.

PLN Arg9Cys mutation found by us in a 30-year-old heart transplantation recipient has been previously described in a large family with DCM with a similarly aggressive disease course as in our patient [16]. No history of DCM in our patient's family suggests a *de novo* mutation, however we could not confirm this since her relatives refused genetic testing. In our study the Arg9Leu mutation was found in a familial DCM case in 55-year-old proband and his 30-year-old daughter. In addition they both carried the c.665G > A:(p.Arg222His) (rs367961979) variant in *DES* which was absent in two other healthy family members. Allele frequency of this variant is 0.0233% (two heterozygotes among 4300 participants of ESP project) [12]. rs367961979 affects conserved amino acid and is localized in helical 1B domain of desmin protein. SIFT and PolyPhen2 prediction scores indicate that it is damaging and possibly damaging, respectively. Although it is intriguing that ~50 % of patients with mutation in *DES* have cardiomyopathy, most commonly DCM [17], at present we classify *DES* c.665G > A (p.Arg222His) as a variant of unknown significance (VUS).

Similarly to what was seen in two unrelated female Arg9Leu mutation carriers studied by Medeiros et al. [5]

substantial clinical differences were observed between the two Arg9Leu mutation carriers from the family studied by us. The proband's daughter had the onset of the disease 2 decades earlier than her father, no atrial arrhythmia, low QRS voltage in all leads (proband in limb leads only) and no mitral insufficiency. It is possible that clinical manifestations of the disease are linked to genetic background or sex. In humans basal *PLN* Ser16 phosphorylation in males is higher than in females [18], thus it is possible that mutations influencing Ser16 phosphorylation have higher impact on females.

The 9th amino acid of *PLN* is an apparent hot spot for mutation as the arginine at this position has also been reported to mutate to His in addition to Cys or Leu [5,16]. Functional studies indicate that possible mechanism of detrimental effect of the Arg9Leu and Arg9Cys mutations on *PLN* protein function is associated with impaired phosphorylation by PKA and impaired SERCA activity [16,19,20]. Mice overexpressing Arg9Cys transgene under the control of cardiac α -myosin heavy chain promoter had developed DCM and heart failure phenotype [16]. Recently a detailed mechanism of deleterious effect of Arg9Cys mutation on SERCA function was proposed [21]. Arg9Cys mutation stabilizes *PLN* pentamers by disulphide bridges formation and thus prevents phosphorylation of *PLN* by PKA and formation of *PLN* monomers. Disulfide bonds are more stable under oxidative stress conditions which are frequent in such a pathological states as heart failure [22]. Furthermore, under oxidative conditions the Arg9Cys mutant *PLN* can form dimers also with WT *PLN*, which were proposed to be defective in regulating SERCA activity [21].

Based on a report on a large 624 kb duplication including the *PLN* gene in a childhood-onset DCM [23] case we screened for *PLN* gene CNV but did not detect any. *PLN* promoter variant -36 A > C (rs77186188) was

observed with similar allelic frequency as in 1000 genomes project (6.21% vs. 7%, respectively). Initially –36 A > C variant was reported as associated with heart failure, however further studies on larger groups of subjects did not confirm this finding [24,25]. In one DCM patient a rare 5' UTR variant (*PLN*:c.-56C > T, rs189611501) was found. This variant has an allelic frequency of 0.0014 (3 carriers per 1092 subjects) and probably is a rare polymorphism.

Conclusions

In conclusion, our study supports the pathogenicity of *PLN* Arg9Cys and Arg9Leu variants, thus emphasizing the importance of phospholamban amino acid position 9. The phenotype of two c.9_10insA:(p.Val4Serfs*15) variant carriers suggests that heterozygous truncating *PLN* mutations have low penetrance or do not cause cardiomyopathy at all.

Additional files

Additional file 1: Table S1. List of genes in cardiomyopathy panel.

Additional file 2: Table S2. Sequences of primer used in the study.

Abbreviations

DCM: Dilated cardiomyopathy; HCM: Hypertrophic cardiomyopathy; ICD: Implantable cardioverter-defibrillator; LVEF: Left ventricular ejection fraction; nsVT: Nonsustained ventricular tachycardia; LVNC: Left ventricular non-compaction; SNV: Single nucleotide variation; VUS: Variant of unknown significance; WPW: Wolf-Parkinson-White.

Competing interests

The authors declare that they have no competing interests.

Authors' contributions

GTT contributed to study design, analysis and interpretation of data, drafting the manuscript and performed Sanger sequencing. ZTB and RP contributed to study design, analysis and interpretation of data, and drafting the manuscript. JK, MR, PS, MMM, TS, MF and JPo contributed to acquisition of data from NGS and/or contributed in analysis of NGS data. JS contributed to recruiting participants, collecting samples and clinical data and drafting the manuscript. MSM, MB, EM, LAM, PC, BFN, LS, JG, TZ contributed to recruiting participants, collecting samples and clinical data and analysis and interpretation of clinical data. JPi and WD contributed to recruiting participants and collecting samples from WOBASZ study. All authors read and approved the final manuscript.

Acknowledgements

The study was supported by National Science Centre (NCN) grant 2011/01/B/NZ4/03455 and Institute of Cardiology grant No 2.1/II/2010. PS and TS were supported by EU program: FP7-REGPOT-2012-CT2012-316254-BASTION.

Author details

¹Laboratory of Molecular Biology, Institute of Cardiology, ul. Alpejska 42, 04-628 Warszawa, Poland. ²Unit for Screening Studies in Inherited Cardiovascular Diseases, Institute of Cardiology, ul. Alpejska 42, 04-628 Warszawa, Poland. ³Department of Medical Genetics, Warsaw Medical University, ul. Pawińskiego 3C, 02-106 Warszawa, Poland. ⁴Department of Cardiomyopathies, Institute of Cardiology, ul. Alpejska 42, 04-628 Warszawa, Poland. ⁵Department of Heart Failure and Transplantology, Institute of Cardiology, ul. Alpejska 42, 04-628 Warszawa, Poland. ⁶Department of Arrhythmia, Institute of Cardiology, ul. Alpejska 42, 04-628 Warszawa, Poland. ⁷Department of Immunology, Center for Biostructure Research, Medical University of Warsaw, Warszawa, Poland. ⁸Department of Interventional Cardiology and Angiology, Institute of Cardiology, ul. Alpejska 42, 04-628

Warszawa, Poland. ⁹Department of Epidemiology, Cardiovascular Diseases Prevention and Promotion of Health, Institute of Cardiology, ul. Niemodlińska 33, 04-635 Warszawa, Poland.

Received: 30 October 2014 Accepted: 23 March 2015

Published online: 03 April 2015

References

- Bers DM. Cardiac excitation-contraction coupling. *Nature*. 2002;415:198–205.
- Wegener AD, Simmerman HK, Lindemann JP, Jones LR. Phospholamban phosphorylation in intact ventricles. Phosphorylation of serine 16 and threonine 17 in response to beta-adrenergic stimulation. *J Biol Chem*. 1989;264:11468–74.
- Catalucci D, Latronico MV, Ceci M, Rusconi F, Young HS, Gallo P, et al. Akt increases sarcoplasmic reticulum Ca²⁺ cycling by direct phosphorylation of phospholamban at Thr17. *J Biol Chem*. 2009;284:28180–7.
- Vafiadaki E, Papalouka V, Arvanitis DA, Kranias EG, Sanoudou D. The role of SERCA2a/PLN complex, Ca(2+) homeostasis, and anti-apoptotic proteins in determining cell fate. *Pflugers Archiv Eur J Physiol*. 2009;457:687–700.
- Medeiros A, Biagi DG, Sobreira TJ, de Oliveira PS, Negro CE, Mansur AJ, et al. Mutations in the human phospholamban gene in patients with heart failure. *Am Heart J*. 2011;162:1088–95.
- van der Zwaag PA, van Rijsingen IA, Asimaki A, Jongbloed JD, van Veldhuisen DJ, Wiesfeld AC, et al. Phospholamban R14del mutation in patients diagnosed with dilated cardiomyopathy or arrhythmogenic right ventricular cardiomyopathy: evidence supporting the concept of arrhythmogenic cardiomyopathy. *Eur J Heart Fail*. 2012;14:1199–207.
- Landstrom AP, Adekola BA, Bos JM, Ommen SR, Ackerman MJ. PLN-encoded phospholamban mutation in a large cohort of hypertrophic cardiomyopathy cases: summary of the literature and implications for genetic testing. *Am Heart J*. 2011;161:165–71.
- Haghighi K, Kolokathis F, Pater L, Lynch RA, Asahi M, Gramolini AO, et al. Human phospholamban null results in lethal dilated cardiomyopathy revealing a critical difference between mouse and human. *J Clin Invest*. 2003;111:869–76.
- Elliott P, Andersson B, Arbustini E, Bilinska Z, Cecchi F, Charron P, et al. Classification of the cardiomyopathies: a position statement from the European Society Of Cardiology Working Group on Myocardial and Pericardial Diseases. *Eur Heart J*. 2008;29:270–6.
- Kostrzewa G, Broda G, Konarzewska M, Krajewki P, Ploski R. Genetic polymorphism of human Y chromosome and risk factors for cardiovascular diseases: a study in WOBASZ cohort. *PLoS One*. 2013;8:e68155.
- Ploski R, Pollak A, Muller S, Franaszczyk M, Michalak E, Kosinska J, et al. Does p.Q247X in TRIM63 cause human hypertrophic cardiomyopathy? *Circ Res*. 2014;114:e2–5.
- Exome Variant Server, NHLBI GO Exome Sequencing Project (ESP), Seattle, WA. [<http://evs.gs.washington.edu/EVS/>]
- Stenson PD, Ball EV, Mort M, Phillips AD, Shiel JA, Thomas NS, et al. Human Gene Mutation Database (HGMD): 2003 update. *Hum Mutat*. 2003;21:577–81.
- Mahrholdt H, Wagner A, Judd RM, Sechtem U, Kim RJ. Delayed enhancement cardiovascular magnetic resonance assessment of non-ischaemic cardiomyopathies. *Eur Heart J*. 2005;26:1461–74.
- Ng D, Johnston JJ, Teer JK, Singh LN, Peller LC, Wynter JS, et al. Interpreting secondary cardiac disease variants in an exome cohort. *Circ Cardiovasc Genet*. 2013;6:337–46.
- Schmitt JP, Kamisago M, Asahi M, Li GH, Ahmad F, Mende U, et al. Dilated cardiomyopathy and heart failure caused by a mutation in phospholamban. *Science*. 2003;299:1410–3.
- van Spaendonck-Zwarts KY, van Hessem L, Jongbloed JD, de Walle HE, Capetanaki Y, van der Kooij AJ, et al. Desmin-related myopathy. *Clin Genet*. 2011;80:354–66.
- Dash R, Frank KF, Carr AN, Moravec CS, Kranias EG. Gender influences on sarcoplasmic reticulum Ca²⁺ + –handling in failing human myocardium. *J Mol Cell Cardiol*. 2001;33:1345–53.
- Ceholski DK, Trieber CA, Young HS. Hydrophobic imbalance in the cytoplasmic domain of phospholamban is a determinant for lethal dilated cardiomyopathy. *J Biol Chem*. 2012;287:16521–9.
- Ceholski DK, Trieber CA, Holmes CF, Young HS. Lethal, hereditary mutants of phospholamban elude phosphorylation by protein kinase A. *J Biol Chem*. 2012;287:26596–605.

21. Ha KN, Masterson LR, Hou Z, Verardi R, Walsh N, Veglia G, et al. Lethal Arg9Cys phospholamban mutation hinders Ca²⁺ -ATPase regulation and phosphorylation by protein kinase A. *Proc Natl Acad Sci U S A*. 2011;108:2735–40.
22. Choudhary G, Dudley Jr SC. Heart failure, oxidative stress, and ion channel modulation. *Congest Heart Fail*. 2002;8:148–55.
23. Lee TM, Addonizio LJ, Chung WK. Dilated cardiomyopathy due to a phospholamban duplication. *Cardiol Young*. 2014;24:953–4.
24. Haghghi K, Chen G, Sato Y, Fan GC, He S, Kolokathis F, et al. A human phospholamban promoter polymorphism in dilated cardiomyopathy alters transcriptional regulation by glucocorticoids. *Hum Mutat*. 2008;29:640–7.
25. Santos DG, Medeiros A, Brum PC, Mill JG, Mansur AJ, Krieger JE, et al. No evidence for an association between the -36A > C phospholamban gene polymorphism and a worse prognosis in heart failure. *BMC Cardiovasc Disord*. 2009;9:33.

**Submit your next manuscript to BioMed Central
and take full advantage of:**

- Convenient online submission
- Thorough peer review
- No space constraints or color figure charges
- Immediate publication on acceptance
- Inclusion in PubMed, CAS, Scopus and Google Scholar
- Research which is freely available for redistribution

Submit your manuscript at
www.biomedcentral.com/submit

