



Published in final edited form as:

Nat Commun. ; 6: 7001. doi:10.1038/ncomms8001.

## Enhanced meta-analysis and replication studies identify five new psoriasis susceptibility loci

Lam C Tsoi<sup>1</sup>, Sarah L Spain<sup>2,3</sup>, Eva Ellinghaus<sup>4</sup>, Philip E Stuart<sup>5</sup>, Francesca Capon<sup>2</sup>, Jo Knight<sup>6,7</sup>, Trilokraj Tejasvi<sup>5</sup>, Hyun M Kang<sup>1</sup>, Michael H Allen<sup>2</sup>, Sylviane Lambert<sup>5</sup>, Stefan Stoll<sup>5</sup>, Stephan Weidinger<sup>8</sup>, Johann E Gudjonsson<sup>5</sup>, Sulev Koks<sup>9</sup>, Külli Kingo<sup>10</sup>, Tonu Esko<sup>11</sup>, Sayantan Das<sup>1</sup>, Andres Metspalu<sup>11</sup>, Michael Weichenthal<sup>8</sup>, Charlotta Enerback<sup>12</sup>, Gerald G. Krueger<sup>13</sup>, John J Voorhees<sup>5</sup>, Vinod Chandran<sup>14</sup>, Cheryl F Rosen<sup>15</sup>, Proton Rahman<sup>16</sup>, Dafna D Gladman<sup>14</sup>, Andre Reis<sup>17</sup>, Rajan P Nair<sup>5</sup>, Andre Franke<sup>4</sup>, Jonathan NWN Barker<sup>2</sup>, Goncalo R Abecasis<sup>1,‡</sup>, Richard C Trembath<sup>18,‡</sup>, and James T Elder<sup>5,19,‡</sup>

<sup>1</sup>Department of Biostatistics, Center for Statistical Genetics, University of Michigan Ann Arbor, MI 48109, USA

<sup>2</sup>Division of Genetics and Molecular Medicine, King's College London, London, UK

<sup>3</sup>Wellcome Trust Sanger Institute, Wellcome Trust Genome Campus, Hinxton, Cambridge, UK

<sup>4</sup>Institute of Clinical Molecular Biology, Christian-Albrechts-University of Kiel, 24105 Kiel, Germany

<sup>5</sup>Department of Dermatology, University of Michigan, Ann Arbor, MI 48109, USA

<sup>6</sup>Neuroscience Research, Centre for Addiction and Mental Health, Toronto, ON, Canada M5T 1R8

<sup>7</sup>National Institute for Health Research (NIHR), Biomedical Research Centre, Guy's and St. Thomas' NHS Foundation Trust

<sup>8</sup>Department of Dermatology, University Hospital, Schleswig-Holstein, Christian-Albrechts-University, 24105 Kiel, Germany

Users may view, print, copy, and download text and data-mine the content in such documents, for the purposes of academic research, subject always to the full Conditions of use:[http://www.nature.com/authors/editorial\\_policies/license.html#terms](http://www.nature.com/authors/editorial_policies/license.html#terms)

<sup>‡</sup>Corresponding authors: James T. Elder, 7412 Medical Sciences Building 1, University of Michigan Medical School, 1301 E. Catherine, Ann Arbor, Michigan 48109-5675, USA, phone (734) 647-8070, [jelder@umich.edu](mailto:jelder@umich.edu). Richard C. Trembath, Queen Mary University of London, Barts and the London School of Medicine and Dentistry, London E1 2AD, UK, [vp-health@qmul.ac.uk](mailto:vp-health@qmul.ac.uk). Goncalo R. Abecasis, Department of Biostatistics, Center for Statistical Genetics, School of Public Health M4614 SPH I, University of Michigan, Box 2029, Ann Arbor, MI 48109-2029, USA, phone (734) 763-4901, [goncalo@umich.edu](mailto:goncalo@umich.edu).

### Author Contributions

J.T.E., R.C.T. and G.R.A. designed and directed the study. R.P.N., M.W., J.J.V., J.T.E., F.C., J.N.B., T.T., V.C., C.F.R., M.H.A., A.R., R.C.T., A.F., S.W., S.K., K.K., T.E., G.G.K., C.E., A.M., D.D.G., P.R., and S.L.S. contributed to sample collection and phenotyping. J.K. coordinated the GAPC samples and datasets. J.T.E. coordinated the PAGE samples and datasets. J.K., P.E.S., G.R.A., and H.M.K. advised on the statistical analysis. E.E., and R.P.N. performed genotyping. S.L.S., L.C.T., and E.E. performed the genotype calling. L.C.T. and S.L.S. and S.D. performed genotype imputation. L.C.T. performed statistical analysis. S.L. and S.W.S. performed the *NFKB1Z* expression experiments. F.C., T.T., S.L., S.S., J.E.G., J.N.B., R.C.T., J.T.E. and L.C.T. contributed to interpretation and biological inference for the results. L.C.T. and J.T.E. drafted the manuscript. L.C.T. and S.L. prepared the figures and tables. All authors approved the final draft.

**Competing financial interests:** The authors declare no competing financial interests.

<sup>9</sup>Department of Pathophysiology, Centre of Translational Medicine and Centre for Translational Genomics, University of Tartu, 50409 Tartu, Estonia

<sup>10</sup>Department of Dermatology and Venerology, University of Tartu, 50409 Tartu, Estonia

<sup>11</sup>Estonian Genome Center, University of Tartu, 51010 Tartu, Estonia

<sup>12</sup>Department of Dermatology, Linköping University, SE-581 83 Linköping, Sweden

<sup>13</sup>Dept of Dermatology, University of Utah, Salt Lake City, UT 84132

<sup>14</sup>Department of Medicine, Division of Rheumatology, University of Toronto, Toronto Western Hospital, Toronto, Ontario M5T 2S8, Canada

<sup>15</sup>Department of Medicine, Division of Dermatology, University of Toronto, Toronto Western Hospital, Toronto, Ontario M5T 2S8

<sup>16</sup>Department of Medicine, Memorial University, St. John's, Newfoundland A1C 5B8, Canada

<sup>17</sup>Institute of Human Genetics, University of Erlangen-Nuremberg, Erlangen, Germany

<sup>18</sup>Barts and the London School of Medicine and Dentistry, Queen Mary University of London, London, UK

<sup>19</sup>Ann Arbor Veterans Affairs Hospital, Ann Arbor, MI, 48105, USA

## Abstract

Psoriasis is a chronic autoimmune disease with complex genetic architecture. Previous genomewide association studies (GWAS) and a recent meta-analysis using ImmunoChip data have uncovered 36 susceptibility loci. Here, we extend our previous meta-analysis of European ancestry by refined genotype calling and imputation and by the addition of 5,033 cases and 5,707 controls. The combined analysis, consisting of over 15,000 cases and 27,000 controls, identifies five new psoriasis susceptibility loci at genomewide significance ( $p < 5 \times 10^{-8}$ ). The newly identified signals include two that reside in intergenic regions (1q31.1 and 5p13.1) and three residing near *PLCL2* (3p24.3), *NFKBIZ* (3q12.3), and *CAMK2G* (10q22.2). We further demonstrate that *NFKBIZ* is a *TRAF3IP2*-dependent target of IL-17 signaling in human skin keratinocytes, thereby functionally linking two strong candidate genes. These results further integrate the genetics and immunology of psoriasis, suggesting new avenues for functional analysis and improved therapies.

## Introduction

Psoriasis is a chronic immune-mediated skin disease with complex genetic architecture that affects approximately 2% of the world population. It presents a significant economic burden for affected individuals and for society<sup>1</sup>, and can severely impact the patient's quality of life<sup>2</sup>. Aided by advances in high throughput genotyping technologies, genomewide association studies have identified multiple genetic loci associated with psoriasis<sup>3-6</sup>. These studies have been accompanied by replication of the most promising signals to confirm the psoriasis-associated signals at genomewide significance levels. More recently, large consortia have utilized meta-analyses to identify additional susceptibility loci with modest effect sizes<sup>7,8</sup>.

Previously, we performed a meta-analysis combining three existing GWAS [the Collaborative Association Study of Psoriasis (CASP)<sup>3</sup>, Kiel<sup>5</sup>, the Wellcome Trust Case Control Consortium 2 (WTCCC2)<sup>6</sup>, and two ImmunoChip datasets (the Genetic Analysis of Psoriasis Consortium (GAPC) and the Psoriasis Association Genetics Extension (PAGE)] and identified 15 novel psoriasis susceptibility loci<sup>8</sup>, increasing the number of confirmed loci to 36 for populations of European descent.

In this study, we enhanced our previous meta-analysis<sup>8</sup> and added replication datasets to follow up the most promising signals. First, we applied the optiCall<sup>9</sup> genotype calling algorithm to the GAPC and PAGE datasets, and performed genome-wide imputation to 1000 Genomes haplotypes. In this way, we were able to examine association at over six times the number of variants examined in our previous meta-analysis<sup>8</sup>. Using these enhancements, we performed a discovery meta-analysis of the combined GAPC/PAGE ImmunoChip dataset and the three psoriasis GWAS<sup>3,5-7</sup>, comprising 10,262 psoriasis cases and 21,871 controls. We then conducted replication analysis in 5,033 cases and 5,707 controls from four independent datasets, resulting in a combined analysis involving over 15,000 cases and 27,000 controls. We report five novel psoriasis susceptibility loci reaching genome-wide significance ( $p < 5 \times 10^{-8}$ ), which add to the collective understanding of the genetic basis of this common cutaneous disorder.

## Results

### Discovery meta-analysis

The discovery meta-analysis included the combined GAPC/PAGE ImmunoChip dataset and three existing GWAS datasets (i.e. CASP, Kiel, and WTCCC2). We first performed genome-wide imputation of each dataset using 1000 Genomes haplotypes as a reference panel<sup>10</sup>. After imputation, we tested association for 696,365 markers (52,444 of them are short insertion/deletion variations, INDELs) that had minor allele frequencies (MAF)  $\geq 1\%$  and imputation quality ( $r^2$ ) greater than 0.7 in all four datasets. This study analyzed more than six times the 111,236 markers examined in the original meta-analysis<sup>8</sup>.

We have shown that linear mixed modeling could be used to correct population stratification for association analysis<sup>11</sup> in the PAGE and GAPC datasets separately<sup>8</sup>. This is also the case in the current combined ImmunoChip dataset consisting of 6,268 psoriasis cases and 14,172 controls, with the genomic inflation factor estimated to be 0.96 (Supplementary Fig. 1). The genomic inflation factors for the CASP, Kiel and WTCCC2 GWAS data were estimated to be 1.01, 1.04, and 1.04, respectively.

Among the 36 known psoriasis susceptibility loci, 35 yielded strong evidence of association (Effective sample size-weighted z-score:  $P_{discovery-meta} = 5 \times 10^{-7}$ ), of which 30 achieved genome-wide significance ( $P_{discovery-meta} = 5 \times 10^{-8}$ ) in the discovery meta-analysis (Supplementary Information and Supplementary Fig. 2) involving 10,262 cases and 21,871 controls. The only previously described locus that did not yield association in this study maps near *IL28RA*, in which the strongest previously identified signals<sup>6</sup> failed our quality filters in one of the GWAS datasets. However, the ImmunoChip data alone does show suggestive association in the *IL28RA* region (EMMAX:  $P_{ImmunoChip} = 3.5 \times 10^{-7}$ ).

## Combined analysis identifies five new loci

In the discovery meta-analysis, we identified 6 novel loci showing significant association with  $P_{discovery-meta} = 5 \times 10^{-8}$  (Table 1, Figure 1, and Supplementary Table 1). We evaluated the most strongly associated markers (i.e. the “best markers”) identified in the new loci, and all of them have good imputation quality and none exhibited significant heterogeneity across datasets (all heterogeneity p-values  $> 0.1$ ) (Supplementary Table 2). We then expanded our analysis utilizing genotyping data from four independent replication datasets, utilizing either the best markers or their best linkage disequilibrium (LD) proxies if  $ld-r^2 \geq 0.8$ . Notably, five of the six loci retained genomewide significance in the combined meta-analysis (Table 2; Supplementary Table 3). Because one of the best markers (rs4685408) was genotyped separately in a substantial fraction (3,030 cases and 2,859 controls) of two of our replication datasets (i.e. Exomechip 2 and PsA GWAS; Table 2), and the proxies for this marker in the two datasets were among the weakest of those listed in Table 2, we also treated this data as an additional independent dataset (termed as “Michigan Genotyping” in Supplementary Table 3; logistic regression:  $P_{Michigan} = 9 \times 10^{-5}$ ; combined meta-analysis:  $P_{combined-meta} = 9 \times 10^{-15}$ ). In all, the combined analysis consists of around 15,000 psoriasis cases and over 27,000 controls.

The estimated odds ratios (ORs) for the five confirmed novel loci ranged from 1.12 to 1.17 (Table 1), similar to the 15 new loci identified in the original meta-analysis<sup>8</sup>. Among the 5 novel loci, *5q13.1* has the highest effect size (OR = 1.17). Interestingly, this signal is situated in an intergenic region (Figure 1), and was previously identified as a susceptibility locus for other autoimmune diseases including inflammatory bowel disease and multiple sclerosis (Table 3). While additional comparisons and more well-powered studies are needed, none of the five novel loci reported here have been identified as genomewide psoriasis susceptibility loci in non-European samples<sup>12–16</sup> (Supplementary Table 4).

As assessed using ANNOVAR<sup>17</sup>, the strongest signals from three of the confirmed loci map to intronic regions (Table 1), and the strongest signals from the other two loci map to intergenic regions. Using 1000 Genomes Project data, we did not identify any common (MAF $>1\%$ ) protein-altering variants (i.e. missense/nonsense mutations) in high linkage disequilibrium ( $ld-r^2 \geq 0.8$ ) with our strongest signals. We also performed conditional and interaction analyses using the five new loci identified in this study and did not identify any independent secondary signals within the five loci or evidence for epistasis effects among these loci or with previously described psoriasis loci.

## Biological inferences for identified loci

Nearby genes within the three non-intergenic susceptibility loci (within  $\pm 200$ kb boundary of the strongest signals) include: *PLCL2* on 3p24.3; *NFKBIZ*, *ZPLD1*, and *CEP97* on 3q12.3; and *CAMK2G*, *FUT11*, *AGAP5*, *PLAU*, and *MYOZ1* on 10q22.2 (Figure 1). Among the above genes, *NFKBIZ* and *MYOZ1* were differentially expressed when comparing psoriatic and normal skin samples<sup>18</sup>: *NFKBIZ* was four-fold up-regulated (Wilcoxon rank-sum test:  $p = 1.1 \times 10^{-28}$ ) and *MYOZ1* was down-regulated (fold change = 0.5;  $p = 3.5 \times 10^{-14}$ ) in lesional psoriatic skin vs. normal skin.

We searched the NHGRI catalog<sup>19</sup> for previously identified genomewide significant ( $p = 5 \times 10^{-8}$ ) loci within  $\pm 200\text{kb}$  of the best signals from the five novel loci identified in this study. Four of the five new loci are shared with other complex traits, most of which are immune-mediated inflammatory disorders (Table 3). For the most part, however, the risk variants from psoriasis and the other complex traits that map to the same loci are not in linkage disequilibrium, meaning that the psoriasis risk haplotypes do not tend to be the same as those found for the other traits (Table 3). Although intergenic in nature, the 5p13.1 locus is shared with four other complex diseases, including allergy<sup>20</sup>, multiple sclerosis (MS)<sup>21</sup>, Crohn's disease<sup>22,23</sup>, and ulcerative colitis (UC)<sup>24</sup>.

Since the novel signals do not tend to be in LD with any amino-acid altering variants, we then investigated their potential regulatory roles. Of the five novel loci, four of them overlapped with histone marks or transcription factor binding sites in lymphoblastoid cells or keratinocytes according to data from ENCODE<sup>25</sup> (Supplementary Table 5). The transcription factors (e.g. NF- $\kappa$ B, IRF4, BATF, JUN-D) for the binding sites overlapped by these loci tend to be involved in immune responses: NF- $\kappa$ B and IRF4 are important transcription factors that regulate both innate and adaptive immune response; and the BATF-JUN family protein complexes are essential for IRF4-mediated transcription in T cells<sup>26</sup>. We then asked whether our best markers from the novel loci are eQTLs and could alter the expression of nearby genes. Interestingly, we found that rs7637230 ( $p = 2.22 \times 10^{-8}$ ) and rs2675662 ( $p = 5.78 \times 10^{-10}$ ) are both cis-eQTLs in lymphoblastoid cells<sup>27</sup>, and affect the expression levels of *NFKBIZ* and *FUT11*, respectively.

The IL-17 pathway has been shown to play an important role in psoriasis<sup>28</sup>. *TRAF3IP2*, a susceptibility locus for both psoriasis and psoriatic arthritis<sup>5,8,29</sup>, encodes adaptor protein Act1, one of the key components in the IL-17 signaling pathway<sup>30</sup>. *NFKBIZ*, a gene in one of the newly discovered loci of this study, has been shown to be an Act1-dependent IL-17 target gene in mice<sup>31,32</sup>. Because psoriasis is a uniquely human disease, and because keratinocytes appear to be a key target of IL-17 action in psoriasis<sup>28</sup>, we set out to determine whether *NFKBIZ* is also an Act1-dependent target of IL-17 signaling in human keratinocytes. To do this, we investigated the time course of *NFKBIZ* expression in human keratinocytes engineered to silence *TRAF3IP2* expression under the control of tetracycline. As shown in Figure 2, expression of *NFKBIZ* mRNA and protein could be significantly induced by IL-17 ( $p < 0.01$ ), and these inductions were significantly ( $p < 0.01$ ) blocked by *TRAF3IP2* silencing. As illustrated above, variant rs7637230 is in strong LD ( $r^2 = 0.8$ ) with markers that overlap with chromatin marks in lymphoblastoid cells and keratinocytes (Supplementary Table 5) and it is an eQTL for the expression of *NFKBIZ* in lymphoblastoid cells<sup>27</sup>. Together with the results from our *NFKBIZ* experiments, these findings nominate *NFKBIZ* as a strong candidate gene in the 3q12 locus and suggest a potential disease mechanism of the IL-17 pathway in psoriasis.

## Discussion

In this study, we identified five novel psoriasis susceptibility loci reaching genomewide significance, increasing the number of known psoriasis susceptibility loci to 41 in Caucasians and to 49 worldwide (Supplementary Table 4).

We performed three main procedures to ensure the validity of the identified novel loci in this study: First, to ensure the imputed dosage of each marker is accurate and to avoid batch effects, we required a stringent imputation quality threshold ( $r^2 \geq 0.7$ ). Furthermore, we only considered markers that passed the quality threshold in all 4 datasets when performing the associations (Supplementary Table 2). Second, we calculated the heterogeneity p-value from the meta-analysis to be sure the associations were not heterogeneous ( $p > 0.05$ ) among the datasets (Supplementary Table 2). Finally, we performed a replication analysis to further validate that the 5 loci still achieve genomewide significance in the combined meta-analysis (Table 2).

While estimates of allele frequencies based on imputed dosages will have added uncertainty compared to those based on experimentally determined genotypes, the allele frequencies reported in our study do show consistent differences between cases and controls for each of the associated markers across different datasets (Supplementary Table 2). We also compared risk allele frequencies for 41 psoriasis susceptibility loci across the four discovery datasets, and we observed very high concordance ( $r^2 \geq 0.99$ ) of the estimated frequencies in controls for all six possible pairs of datasets (Supplementary Fig. 3).

Three of the five newly identified loci contained protein-coding genes; however, we found no evidence suggesting that our signals are missense or nonsense mutations, nor are they in LD with such variations. Our results are in agreement with data for other known psoriasis susceptibility loci, in that fewer than 25% of the psoriasis-associated signals are in linkage disequilibrium with codon-changing variations<sup>8</sup>. While no deleterious functional variants were identified in the three protein-coding loci (*PLCL2* at 3p24.3; *NFKBIZ*, *ZPLDI1*, and *CEP97* at 3q12.3; and *CAMK2G*, *FUT11*, *AGAP5*, *PLAU*, and *MYOZ1* at 10q22.2), variation in *PLCL2* has previously been shown to be associated at genomewide significance ( $p = 2.3 \times 10^{-8}$ ) with primary biliary cirrhosis<sup>33</sup> and nominally ( $p = 1.7 \times 10^{-3}$ ) in a cohort of 982 Caucasian cases of psoriatic arthritis and 8,676 Caucasian controls<sup>34</sup>. In mice, *NFKBIZ* deletion has been functionally associated with inflammatory skin eruptions<sup>35</sup> and *CAMK2G* has been functionally implicated in thymic development<sup>36</sup>. Additionally, *PLAU*, encoding urokinase-type plasminogen activator, has been reported to be overexpressed in psoriatic skin<sup>37</sup> and was up-regulated 1.49-fold ( $p = 3.7 \times 10^{-13}$ ) in our psoriasis RNA-seq transcriptome data, albeit short of the 2-fold change threshold we used to declare significance<sup>18</sup>. Of the remaining protein-coding genes in these three loci, *MYOZ1* encodes myozenin, a muscle protein of no obvious relevance to psoriasis, and very little information is available for *ZPLDI1*, *CEP97*, and *AGAP5* in Online Mendelian Inheritance in Man<sup>38</sup>. The identification of the disease-associated SNPs rs7637230 ( $p = 2.22 \times 10^{-8}$ ) and rs2675662 ( $p = 5.78 \times 10^{-10}$ ) as cis-eQTLs in lymphoblastoid cells<sup>27</sup> prioritizes *NFKBIZ* and *FUT11* as strong candidate genes in their respective loci.

Several recent clinical studies have shown benefit of blockade of IL-17 and its receptors in psoriasis<sup>39</sup>. In this context, the connection between *NFKBIZ* and *TRAF3IP2* is of biological and therapeutic interest. *TRAF3IP2* encodes Act1 (also known as CIKS), an ubiquitin ligase that binds to IL-17 receptors<sup>40,41</sup>. *NFKBIZ* encodes I $\kappa$ B-zeta, a transcriptional regulator that binds to the p50 subunit of NF- $\kappa$ B<sup>42</sup>. Act1 and I $\kappa$ B-zeta are required for IL-17-dependent signaling associated with autoimmune and inflammatory diseases<sup>43,44</sup>. *Nfkbiz*-deficient



mice manifest defective Th17 development, and I $\kappa$ B-zeta regulates this process by cooperating with ROR nuclear receptors<sup>44</sup>. While Act1 has previously been shown to regulate *Nfkbiz* expression in mouse embryonic fibroblasts<sup>31</sup> and mouse skin keratinocytes<sup>32</sup>, this is the first demonstration of Act1-dependent *NFKBIZ* / I $\kappa$ B-zeta expression in human keratinocytes. Interestingly, *TNFAIP3* encoding A20 is also a strong candidate gene in psoriasis and several other inflammatory diseases, which appears to act as a brake on cytokine-mediated signaling<sup>45</sup>. Interestingly *TNFAIP3* is also an Act1-dependent target of IL-17 signaling, which in turn functions as a negative regulator of IL-17 receptor function<sup>30</sup>. These results highlight *NFKBIZ* as an *IL17* target and identify an immunoregulatory network downstream of the IL-17 receptor involving at least three psoriasis candidate genes: *TRAF3IP2*, *NFKBIZ*, and *TNFAIP3*.

Evidence is accumulating to indicate that genetic variants in regulatory regions may play important biological roles in complex genetic disorders<sup>46,47</sup>, and large scale projects such as ENCODE<sup>25</sup> have been using sequencing technologies and integrative approaches to illuminate the functional elements of the human genome. Our results illustrate the potential regulatory roles of the psoriasis susceptibility loci, and will facilitate the design of future functional analyses.

Similar to other complex traits and diseases<sup>48,49</sup>, large inter-continental consortia have been forming to gather hundreds of thousands of samples to identify susceptibility loci with very mild effect sizes for psoriasis. Moreover, the study of psoriasis genetics is entering a new era, with more efforts on investigating the missing heritability explained by secondary independent signals (fine-mapping analysis<sup>50,51</sup>) and rare variants (by using exome-array or target-/exome-sequencing<sup>16</sup>) in known loci. Not only will these studies provide a higher explained variance by the genetic components, more importantly, they will also shed light on the pathogenesis and disease mechanisms, and ultimately provide new approaches and targets for effective drug discovery.

## Methods

### Discovery meta-analysis datasets

Samples were collected at the participating institutions after obtaining informed consent, and enrollment of human subjects for this study was approved by the following ethics boards: Estonian Biobank (EGCUT) – Research Ethics Committee of the University of Tartu; Michigan samples - Institutional Review Board of the University of Michigan Medical School (IRBMED); German samples - Ethical review board of the Medical Faculty of the CAU (Christian-Albrechts-University of Kiel, Germany); Toronto samples - the ethics board is the University Health Network; Swedish samples - the ethics board is the Local Ethical Review Board at Linköping University; Newfoundland samples- the ethics board is the Health Research Ethics Authority; Utah samples - the ethics board is the Institutional Review Board of the University of Utah. We first performed the discovery meta-analysis using four datasets: *i*) combined GAPC/PAGE Immunochip dataset; *ii*) CASP GWAS; *iii*) Kiel GWAS; and *iv*) WTCCC2 GWAS. Since the algorithm implemented in optiCall, which uses both within and across sample signal intensities, can outperform standard methods (e.g. GenCall or GenoSNP)<sup>9</sup> when applied to Immunochip, we used optiCall<sup>9</sup> to re-call the PAGE

and GACP datasets. We removed samples with outlying intensity values based on optiCall default settings by using the “-meanintfilter” flag. Samples with more than 2% missing genotypes and markers with more than 5% missing values were rejected. We merged the PAGE and GACP datasets to form a unified ImmunoChip dataset, re-applying the above call rate criteria to the combined data. These and subsequent genotype-dependent quality control procedures resulted in the removal of 1,222 (5.6%) samples from this analysis, compared to the previous study<sup>8</sup>. The quality-controlled ImmunoChip dataset consisted of 2,858 cases and 8,636 controls in GACP, and 3,410 cases and 5,536 controls in PAGE. For each of the three GWAS datasets, we first obtained the quality controlled genotyped data used by the previous studies<sup>3,5,6</sup>. We then applied additional filters (sample/marker call rate  $\geq 0.95$ ; HWE  $p \geq 1 \times 10^{-6}$ ) to the genotyped data before phasing/imputation (see below). Supplementary Table 6 shows the quality measurements for each dataset.

### Imputation and association

For each of the GWAS/ImmunoChip datasets, we performed haplotype phasing of the genotypes using ShapeIT<sup>52</sup>, we then performed imputation using minimac<sup>53</sup> using haplotypes from the EUR subset of version 3 of the 1000 Genomes Project Phase I release as the reference panel<sup>10</sup>. After imputation, we analyzed markers with minor allele frequency (MAF)  $\geq 1\%$  and with imputation quality  $r^2 \geq 0.7$  in all four datasets.

For the ImmunoChip data, a linear mixed model was used to perform association tests as implemented in EMMAX<sup>11</sup>. The kinship matrix was computed using common (MAF  $> 1\%$ ) independent markers located outside the 36 known psoriasis loci, having  $p^{\text{GWA}} \leq 0.5$  (where  $p^{\text{GWA}}$  represents the association p-values obtained from the meta-analysis using only the three independent GWAS datasets; this choice is common for analyses using ImmunoChip markers which are enriched for variants associated with psoriasis in our original GWAS). Using the same procedures described in the previous study for quality control<sup>8</sup> (i.e. SNPs with call rate below 95% or with a Hardy-Weinberg equilibrium p-value  $< 1 \times 10^{-6}$  were excluded; samples with less than 95% call rate were excluded), we performed logistic regression on the three GWAS datasets (i.e. CASP, Kiel, and WTCCC2), using principal components as covariates to correct for population stratification<sup>3,5,6</sup>.

### Discovery meta-analysis

We used METAL to perform meta-analysis, using the sample size weighted approach<sup>54</sup>, adjusting the genomic control inflation factor separately for each dataset. To estimate the odds ratios (ORs) for each marker, we first computed the ORs from the ImmunoChip data using logistic regression, and then used a sample-size weighted approach to compute the ORs from the full datasets<sup>8</sup>. The regional association plots were created by using the software LocusZoom<sup>55</sup>. We used ANNOVAR to perform variant annotations<sup>17</sup> using Gencode v19<sup>56</sup> as gene references.

### Replication datasets and combined meta-analysis

For each of the most strongly associated genomewide significant ( $p < 5 \times 10^{-8}$ ) markers (i.e. the “best markers”) from the novel signals identified in the discovery meta-analysis, we used genotyping data obtained from four different collaborative datasets (here referred to as



Exomechip 1, Exomechip 2, PsA GWAS, and Genizon GWAS) for replication. If the best associated markers were not genotyped in the replication datasets, we identified the best proxies based on the linkage disequilibrium ( $ld-r^2$ ) in the European ancestry subset of version 3 of the 1000 Genomes Project Phase I release<sup>10</sup>. Only proxies with  $ld-r^2 \geq 0.8$  against our best signals were considered. Using only genetically-independent samples, the 5,033 additional cases and 5,707 controls were combined with the discovery meta-analysis using the sample size weighted approach<sup>54</sup>.

### **NFKBIZ expression**

N/TERT-TR keratinocytes (KCs) were engineered to express a tetracycline (Tet)-inducible shRNA as described<sup>57</sup>. These cells (N/TERT-TR-shTRAF3IP2) were seeded at 8,000 cells  $cm^{-2}$  in the presence or absence of 1  $\mu g/ml$  Tet. When confluent (after 7 days), cells were stimulated for 1 to 4 hours with 200  $ng/ml$  recombinant human (rh) IL-17A (R&D Systems). RNA was isolated using RNAeasy columns (Qiagen) and reverse-transcribed using the High Capacity cDNA Reverse Transcription Kit (Life Technologies). Quantitative real-time polymerase chain reaction (qPCR) was performed using Taqman primers (Life Technologies) specific for nuclear factor of kappa light polypeptide gene enhancer in B-cells inhibitor, zeta (*NFKBIZ*, Hs00230071-m1), TNF receptor associated factor 3 interacting protein 2 (*TRAF3IP2*, Hs00974570-m1) and the control gene *RPLP0* (Hs99999902\_m1). From the same experiments, NFKBIZ and TRAF3IP2/Act1 proteins were assessed by western blotting, utilizing rabbit polyclonal IgG (respectively from Cell Signal Transduction #9244 and Santa Cruz Biotechnology sc-11444, both diluted 1:1000) to detect protein, with  $\beta$ -actin (Cell Signal Transduction #4967 dilution 1:5000) as a loading control. Statistical analysis was performed using GraphPad software (Prizm). The uncropped scans of the blots are shown in Supplementary Fig. 4.

### **Overlap with ENCODE genomic features**

We investigated whether the best signals identified from the novel loci are in LD with markers within chromatin marks or transcription factor binding sites. For each best associated marker, we first identified a set of high LD-markers based on the European population of the 1000 Genomes. We then examined human keratinocytes and lymphoblastoid cell lines (relevant cell types for psoriasis) and identified any chromatin marks or transcription factor binding sites overlapping with the LD-marks.

### **Supplementary Material**

Refer to Web version on PubMed Central for supplementary material.

### **Acknowledgments**

Major support for this study was provided by the National Institutes of Health (R01AR042742, R01AR050511, R01AR054966, R01AR062382, R01AR065183 to JTE), the Wellcome Trust, and the German Research Foundation. We acknowledge use of the British 1958 Birth Cohort DNA collection, funded by the Medical Research Council (G0000934) and the Wellcome Trust (068545/Z/02), and of the UK National Blood Service controls funded by the Wellcome Trust. FC, RCT, and JNB were supported by the Medical Research Council Stratified Medicine award (MR/L011808/1). AE and EE received infrastructure support through the DFG Clusters of Excellence 306 "Inflammation at Interfaces" and is supported by the German Ministry of Education and Research (BMBF) through the e:Med sysINFLAME grant. JEG was supported by Doris Duke Foundation. We

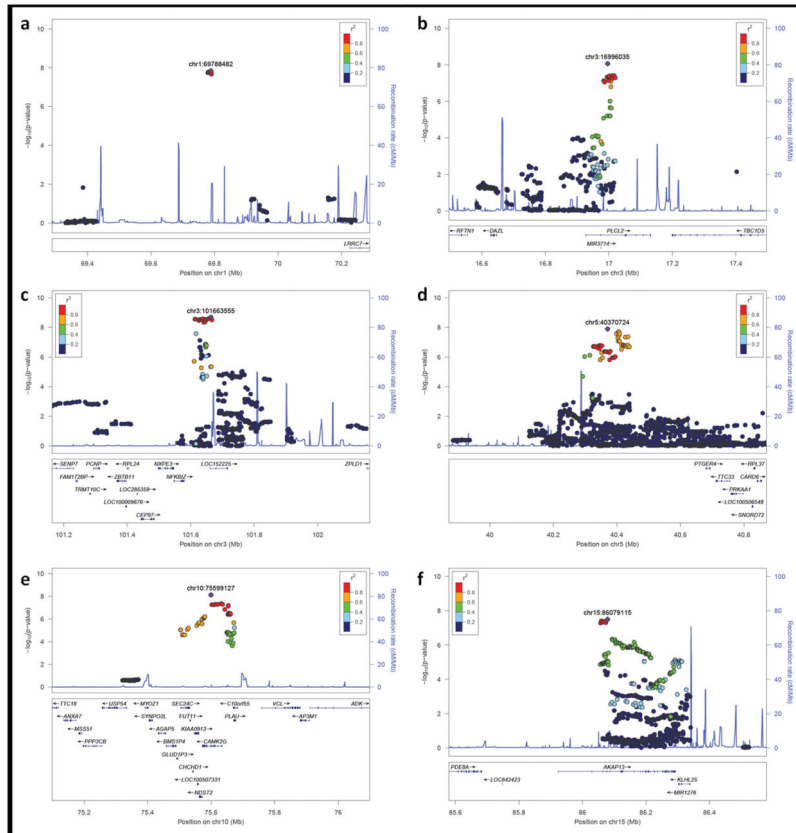
acknowledge support from the Department of Health via the NIHR comprehensive Biomedical Research Center award to GSTT NHS Foundation Trust in partnership with King's College London and KCH NHS Foundation Trust. We acknowledge the Collaborative Association Study of Psoriasis (CASP) and the Wellcome Trust Case Control Consortium 2 (WTCCC2) for the contribution of GWAS data, as well as the provision of control DNA samples by the Cooperative Research in the Region of Augsburg (KORA) and genotyping data generated by the Dietary, Lifestyle, and Genetic determinants of Obesity and Metabolic syndrome (DILGOM) consortium. We also thank the Genetic Analysis of Psoriasis Consortium (GAPC) and Psoriasis Association Genetics Extension (PAGE) for the contribution of Immunochip data. We thank the Barbara and Neal Henschel Charitable Foundation for their support of the National Psoriasis Victor Henschel BioBank. The Heinz Nixdorf Recall (HNR) cohort was established with the support of the Heinz Nixdorf Foundation. The Estonian Psoriasis cohort was supported by institutional research funding IUT20-46 of the Estonian Ministry of Education and Research, by the Centre of Translational Genomics of University of Tartu (SP1GVARENG) and by the European Regional Development Fund (Centre of Translational Medicine, University of Tartu). The genotyping of control individuals from the HNR cohort was financed by the German Federal Ministry of Education and Research (BMBF), within the context of the NGFNplus Integrated Genome Research Network MooDS (Systematic Investigation of the Molecular Causes of Major Mood Disorders and Schizophrenia). JTE is supported by the Ann Arbor Veterans Affairs Hospital. Detailed consortium contributor lists are detailed in the Supplementary Notes.

## References

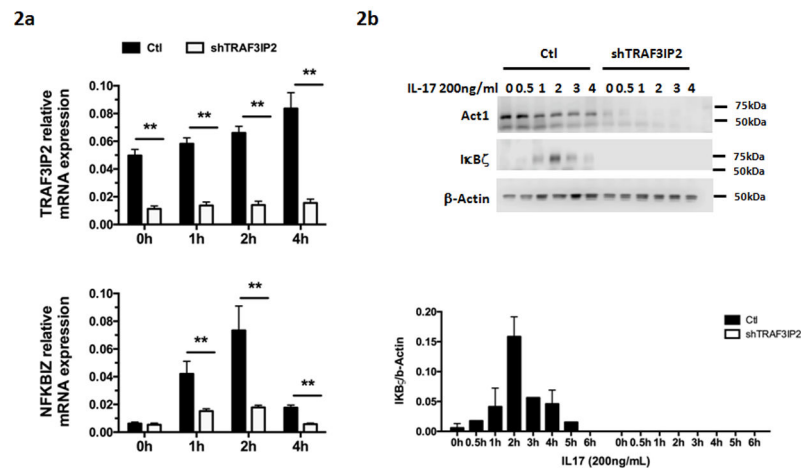
1. Mustonen A, Mattila K, Leino M, Koulu L, Tuominen R. The costs of psoriasis medications. *Dermatol Ther (Heidelb)*. 2013; 3:169–77. [PubMed: 24338674]
2. Hawro T, et al. Impact of psoriasis severity on family income and quality of life. *J Eur Acad Dermatol Venereol*. 2014
3. Nair RP, et al. Genome-wide scan reveals association of psoriasis with IL-23 and NF-kappaB pathways. *Nat Genet*. 2009; 41:199–204. [PubMed: 19169254]
4. Sun LD, et al. Association analyses identify six new psoriasis susceptibility loci in the Chinese population. *Nat Genet*. 2010; 42:1005–9. [PubMed: 20953187]
5. Ellinghaus E, et al. Genome-wide association study identifies a psoriasis susceptibility locus at TRAF3IP2. *Nat Genet*. 2010; 42:991–5. [PubMed: 20953188]
6. Genetic Analysis of Psoriasis C et al. A genome-wide association study identifies new psoriasis susceptibility loci and an interaction between HLA-C and ERAP1. *Nat Genet*. 2010; 42:985–90. [PubMed: 20953190]
7. Stuart PE, et al. Genome-wide association analysis identifies three psoriasis susceptibility loci. *Nat Genet*. 2010; 42:1000–4. [PubMed: 20953189]
8. Tsoi LC, et al. Identification of 15 new psoriasis susceptibility loci highlights the role of innate immunity. *Nat Genet*. 2012; 44:1341–8. [PubMed: 23143594]
9. Shah TS, et al. optiCall: a robust genotype-calling algorithm for rare, low-frequency and common variants. *Bioinformatics*. 2012; 28:1598–603. [PubMed: 22500001]
10. 1000 Genomes Project Consortium et al. An integrated map of genetic variation from 1, 092 human genomes. *Nature*. 2012; 491:56–65. [PubMed: 23128226]
11. Kang HM, et al. Variance component model to account for sample structure in genome-wide association studies. *Nat Genet*. 2010; 42:348–54. [PubMed: 20208533]
12. Sun LD, et al. Association analyses identify six new psoriasis susceptibility loci in the Chinese population. *Nat Genet*. 2010; 42:1005–9. [PubMed: 20953187]
13. Li Y, et al. Association analyses identifying two common susceptibility loci shared by psoriasis and systemic lupus erythematosus in the Chinese Han population. *J Med Genet*. 2013; 50:812–8. [PubMed: 24070858]
14. Zhang XJ, et al. Psoriasis genome-wide association study identifies susceptibility variants within LCE gene cluster at 1q21. *Nat Genet*. 2009; 41:205–10. [PubMed: 19169255]
15. Sheng Y, et al. Sequencing-based approach identified three new susceptibility loci for psoriasis. *Nat Commun*. 2014; 5:4331. [PubMed: 25006012]
16. Tang H, et al. A large-scale screen for coding variants predisposing to psoriasis. *Nat Genet*. 2014; 46:45–50. [PubMed: 24212883]
17. Wang K, Li M, Hakonarson H. ANNOVAR: functional annotation of genetic variants from high-throughput sequencing data. *Nucleic Acids Res*. 2010; 38:e164. [PubMed: 20601685]

18. Li B, et al. Transcriptome Analysis of Psoriasis in A Large Case-Control Sample: Rna-Seq Provides Insights Into Disease Mechanisms. *J Invest Dermatol*.
19. Welter D, et al. The NHGRI GWAS Catalog, a curated resource of SNP-trait associations. *Nucleic Acids Res*. 2014; 42:D1001–6. [PubMed: 24316577]
20. Hinds DA, et al. A genome-wide association meta-analysis of self-reported allergy identifies shared and allergy-specific susceptibility loci. *Nat Genet*. 2013; 45:907–11. [PubMed: 23817569]
21. Sawcer S, et al. Genetic risk and a primary role for cell-mediated immune mechanisms in multiple sclerosis. *Nature*. 2011; 476:214–9. [PubMed: 21833088]
22. Jostins L, et al. Host-microbe interactions have shaped the genetic architecture of inflammatory bowel disease. *Nature*. 2012; 491:119–24. [PubMed: 23128233]
23. Julia A, et al. A genome-wide association study on a southern European population identifies a new Crohn's disease susceptibility locus at RBX1-EP300. *Gut*. 2013; 62:1440–5. [PubMed: 22936669]
24. Anderson CA, et al. Meta-analysis identifies 29 additional ulcerative colitis risk loci, increasing the number of confirmed associations to 47. *Nat Genet*. 2011; 43:246–52. [PubMed: 21297633]
25. Bernstein BE, et al. An integrated encyclopedia of DNA elements in the human genome. *Nature*. 2012; 489:57–74. [PubMed: 22955616]
26. Li P, et al. BATF-JUN is critical for IRF4-mediated transcription in T cells. *Nature*. 2012; 490:543–6. [PubMed: 22992523]
27. Liang L, et al. A cross-platform analysis of 14,177 expression quantitative trait loci derived from lymphoblastoid cell lines. *Genome Res*. 2013; 23:716–26. [PubMed: 23345460]
28. Lowes MA, Suarez-Farinas M, Krueger JG. Immunology of psoriasis. *Annu Rev Immunol*. 2014; 32:227–55. [PubMed: 24655295]
29. Huffmeier U, et al. Common variants at TRAF3IP2 are associated with susceptibility to psoriatic arthritis and psoriasis. *Nat Genet*. 2010; 42:996–9. [PubMed: 20953186]
30. Gaffen SL, Jain R, Garg AV, Cua DJ. The IL-23-IL-17 immune axis: from mechanisms to therapeutic testing. *Nat Rev Immunol*. 2014; 14:585–600. [PubMed: 25145755]
31. Chang SH, Park H, Dong C. Act1 adaptor protein is an immediate and essential signaling component of interleukin-17 receptor. *J Biol Chem*. 2006; 281:35603–7. [PubMed: 17035243]
32. Sonder SU, Paun A, Ha HL, Johnson PF, Siebenlist U. CIKS/Act1-mediated signaling by IL-17 cytokines in context: implications for how a CIKS gene variant may predispose to psoriasis. *J Immunol*. 2012; 188:5906–14. [PubMed: 22581863]
33. Mells GF, et al. Genome-wide association study identifies 12 new susceptibility loci for primary biliary cirrhosis. *Nat Genet*. 2011; 43:329–32. [PubMed: 21399635]
34. Bowes J, et al. Comprehensive assessment of rheumatoid arthritis susceptibility loci in a large psoriatic arthritis cohort. *Ann Rheum Dis*. 2012; 71:1350–4. [PubMed: 22328738]
35. Yamamoto M, et al. Regulation of Toll/IL-1-receptor-mediated gene expression by the inducible nuclear protein IkappaBzeta. *Nature*. 2004; 430:218–22. [PubMed: 15241416]
36. Bui JD, et al. A role for CaMKII in T cell memory. *Cell*. 2000; 100:457–67. [PubMed: 10693762]
37. Spiers EM, Lazarus GS, Lyons-Giordano B. Expression of plasminogen activator enzymes in psoriatic epidermis. *J Invest Dermatol*. 1994; 102:333–8. [PubMed: 8120416]
38. Hamosh A, Scott AF, Amberger J, Valle D, McKusick VA. Online Mendelian Inheritance in Man (OMIM). *Hum Mutat*. 2000; 15:57–61. [PubMed: 10612823]
39. Martin DA, et al. The emerging role of IL-17 in the pathogenesis of psoriasis: preclinical and clinical findings. *J Invest Dermatol*. 2013; 133:17–26. [PubMed: 22673731]
40. Liu C, et al. Act1, a U-box E3 ubiquitin ligase for IL-17 signaling. *Sci Signal*. 2009; 2:ra63. [PubMed: 19825828]
41. Sonder SU, et al. IL-17-induced NF-kappaB activation via CIKS/Act1: physiologic significance and signaling mechanisms. *J Biol Chem*. 2011; 286:12881–90. [PubMed: 21335551]
42. Yamazaki S, Muta T, Takeshige K. A novel IkappaB protein, IkappaB-zeta, induced by proinflammatory stimuli, negatively regulates nuclear factor-kappaB in the nuclei. *J Biol Chem*. 2001; 276:27657–62. [PubMed: 11356851]

43. Qian Y, et al. The adaptor Act1 is required for interleukin 17-dependent signaling associated with autoimmune and inflammatory disease. *Nat Immunol.* 2007; 8:247–56. [PubMed: 17277779]
44. Okamoto K, et al. IkappaBzeta regulates T(H)17 development by cooperating with ROR nuclear receptors. *Nature.* 2010; 464:1381–5. [PubMed: 20383124]
45. Martin F, Dixit VM. A20 edits ubiquitin and autoimmune paradigms. *Nat Genet.* 2011; 43:822–3. [PubMed: 21874034]
46. Maurano MT, et al. Systematic localization of common disease-associated variation in regulatory DNA. *Science.* 2012; 337:1190–5. [PubMed: 22955828]
47. Sakabe NJ, Savic D, Nobrega MA. Transcriptional enhancers in development and disease. *Genome Biol.* 2012; 13:238. [PubMed: 22269347]
48. Okada Y, et al. Genetics of rheumatoid arthritis contributes to biology and drug discovery. *Nature.* 2014; 506:376–81. [PubMed: 24390342]
49. Willer CJ, et al. Discovery and refinement of loci associated with lipid levels. *Nat Genet.* 2013; 45:1274–83. [PubMed: 24097068]
50. Knight J, et al. Conditional analysis identifies three novel major histocompatibility complex loci associated with psoriasis. *Hum Mol Genet.* 2012; 21:5185–92. [PubMed: 22914738]
51. Fan X, et al. Fine mapping of the psoriasis susceptibility locus PSORS1 supports HLA-C as the susceptibility gene in the Han Chinese population. *PLoS Genet.* 2008; 4:e1000038. [PubMed: 18369457]
52. Delaneau O, Marchini J, Zagury JF. A linear complexity phasing method for thousands of genomes. *Nat Methods.* 2012; 9:179–81. [PubMed: 22138821]
53. Howie B, Fuchsberger C, Stephens M, Marchini J, Abecasis GR. Fast and accurate genotype imputation in genome-wide association studies through pre-phasing. *Nat Genet.* 2012; 44:955–9. [PubMed: 22820512]
54. Willer CJ, Li Y, Abecasis GR. METAL: fast and efficient meta-analysis of genomewide association scans. *Bioinformatics.* 2010; 26:2190–1. [PubMed: 20616382]
55. Pruim RJ, et al. LocusZoom: regional visualization of genome-wide association scan results. *Bioinformatics.* 2010; 26:2336–7. [PubMed: 20634204]
56. Harrow J, et al. GENCODE: the reference human genome annotation for The ENCODE Project. *Genome Res.* 2012; 22:1760–74. [PubMed: 22955987]
57. Stoll SW, Johnson JL, Li Y, Rittie L, Elder JT. Amphiregulin carboxy-terminal domain is required for autocrine keratinocyte growth. *J Invest Dermatol.* 2010; 130:2031–40. [PubMed: 20428186]



**Figure 1. Regional association plots for novel psoriasis susceptibility loci**  
 This figure depicts LocusZoom-generated association plots for the six psoriasis susceptibility loci identified in the discovery meta-analysis (effective sample size-weighted approach). All but the 15q25.3 locus (f) showed genomewide significant results in the combined meta-analysis.



**Figure 2. *NFKBIZ* mRNA (A) and IκB-zeta protein (B) are induced by IL-17 in an Act1-dependent fashion in human keratinocytes**

**A.** Time courses of *TRAF3IP2* (top) and *NFKBIZ* (bottom) mRNA expression following IL-17 induction. Black bars represent mRNA relative expression levels measured by qPCR in the absence of tetracycline (Tet) while white bars represent levels after silencing *TRAF3IP2* expression via Tet-inducible expression of shTRAF3IP2. Bars are mean  $\pm$  SEM of 3 independent experiments and \*\* =  $p < 0.01$ ; Student's t-test.

**B.** Western blot analysis of time courses of IκB-zeta and Act1 expression (upper panel) and quantitations of IκB-zeta band intensity relative to β-Actin. Bars are mean  $\pm$  SD of 2 independent experiments (lower panel).



**Table 1**

Loci with genomewide association signals identified in the discovery meta-analysis.

Locus	Variant (annotation)	Chr	Pos	RA	NRA	RAF		p-value	Direction	ORs	Nearby Genes
						case	control				
1q31.1	rs10789285 (intergenic)	1	69788482	G	T	0.28	0.25	$1.43 \times 10^{-8}$	++++	1.12	<i>LRRC7</i>
3p24.3	rs4685408 (intrinsic)	3	16996035	G	A	0.5	0.48	$8.58 \times 10^{-9}$	++++	1.12	<i>PLCL2</i>
3q12.3	rs7637230 (intrinsic)	3	101663555	A	G	0.83	0.8	$2.07 \times 10^{-9}$	++++	1.14	<i>NFKB1Z</i>
5p13.1	rs114934997 (intergenic)	5	40370724	C	A	0.92	0.91	$1.27 \times 10^{-8}$	++++	1.17	<i>CARD6</i>
10q22.2	rs2675662 (intrinsic)	10	75599127	A	G	0.58	0.56	$7.35 \times 10^{-9}$	++++	1.12	<i>CAMK2G</i>
15q25.3	rs35343117 (intrinsic)	15	86079115	G	C	0.37	0.34	$3.10 \times 10^{-8}$	++++	1.1	<i>AKAP13</i>

RA: risk allele; NRA: non-risk allele; RAF: risk allele frequency.

**Table 2**

Results from the discovery, replication, and combined meta-analysis.

Discovery			Replication						Combined		
CASP+Kiel+ WTCCC2+Imm			Exomechip (Utah, Sweden)		Exomechip (Michigan, Toronto, Newfoundland)		P&A GWAS		Genizon GWAS		
10,262 case+	21,871 controls		913 cases+	1,494 controls	3,168 cases + 2,864 controls	191 cases+	356 controls	761 cases+	993 controls		
Marker	P		Marker	P	Marker	P	Marker	P	Marker	P	P
rs10789285	1.4×10 <sup>-8</sup>		NA	NA	NA	NA	rs720233	3.0×10 <sup>-1</sup>	rs720233	1.4×10 <sup>-1</sup>	2.8×10 <sup>-9</sup>
rs4685408	8.6×10 <sup>-9</sup>		rs12497667	3.6×10 <sup>-4</sup>	rs12497667	1.8×10 <sup>-3</sup>	rs1806555	4.4×10 <sup>-1</sup>	rs7653027	6.8×10 <sup>-2</sup>	7.2×10 <sup>-14</sup>
rs7637230	2.1×10 <sup>-9</sup>		rs7637230	2.1×10 <sup>-2</sup>	rs7637230	6.7×10 <sup>-1</sup>	rs1473857	5.5×10 <sup>-2</sup>	rs1473857	1.1×10 <sup>-1</sup>	1.7×10 <sup>-10</sup>
rs114934997	1.3×10 <sup>-8</sup>		rs56054640	5.1×10 <sup>-1</sup>	rs56054640	1.6×10 <sup>-1</sup>	rs2120854	9.3×10 <sup>-1</sup>	rs4957279	2.4×10 <sup>-1</sup>	5.7×10 <sup>-9</sup>
rs2675662	7.4×10 <sup>-9</sup>		rs2675671	6.0×10 <sup>-2</sup>	rs2675671	2.5×10 <sup>-7</sup>	rs2664282	2.0×10 <sup>-1</sup>	rs2675671	2.3×10 <sup>-1</sup>	1.6×10 <sup>-14</sup>
rs35343117	3.1×10 <sup>-8</sup>		rs1483578	9.9×10 <sup>-1</sup>	rs1483578	8.7×10 <sup>-1</sup>	rs2062234	1.3×10 <sup>-3</sup>	rs1483578	8.6×10 <sup>-1</sup>	1.7×10 <sup>-6</sup>

If the best marker identified in the discovery dataset was not genotyped in the replication dataset, the best proxy genotyped marker ( $r^2 \geq 0.8$ ) was used. The p-values for replication datasets were obtained using logistic regression test; sample-size weighted approach was used in the combined meta-analysis.

Newly-discovered psoriasis loci that are shared with other disease susceptibility loci according to NHGRI GWAS catalog.

**Table 3**

Psoriasis loci				Susceptibility loci for other traits					
SNP	Chr	Position	RA	Traits	SNP	Position	RA	p-value	r
rs4685408	3	16996035	G	Primary biliary cirrhosis	rs1372072	16955259	A	$2 \times 10^{-8}$	-0.54
rs7637230	3	101663555	A	Multiple sclerosis	rs771767	101748638	A	$9 \times 10^{-9}$	-0.28
rs114934997	5	40370724	C	Self reported allergy	rs7720838	40486896	G	$8 \times 10^{-11}$	0.21
rs114934997	5	40370724	C	Inflammatory bowel disease	rs11742570	40410584	C	$2 \times 10^{-82}$	0.27
rs114934997	5	40370724	C	Multiple Sclerosis	rs4613763	40392728	C	$3 \times 10^{-16}$	0.10
rs114934997	5	40370724	C	Ulcerative colitis	rs6451493	40410935	T	$3 \times 10^{-9}$	0.27
rs114934997	5	40370724	C	Crohn's disease	rs11742570	40410584	C	$7 \times 10^{-36}$	0.27
rs2675662	10	75599127	A	Inflammatory bowel disease	rs2227564	75673101	C	$7 \times 10^{-10}$	0.62
rs2675662	10	75599127	A	Atrial fibrillation	rs10824026	75421208	A	$4 \times 10^{-9}$	0.39

If more than one overlapping record was found for the same trait, the one with the most significant p-value is reported here. *r*: signed squared LD  $r^2$  between the two markers listed on the same row, with positive value indicates the two risk alleles tend to be on the same haplotype. RA = risk allele. The *p*-values are obtained from the reported association in the NHGRI GWAS catalog.