

RESEARCH

Open Access

Realistic changes in monounsaturated fatty acids and soluble fibers are able to improve glucose metabolism

Camila Risso de Barros, Adriana Cezaretto, Maíra Ladeia Rodrigues Curti, Milena Monfort Pires, Luciana Dias Folchetti, Antonela Siqueira-Catania and Sandra Roberta Gouvea Ferreira*

Abstract

Background/objectives: Cardioprotective effects of Mediterranean-style diet have been shown. Instead of excluding foods, replacement or addition may facilitate compliance with impact on glucose metabolism of individuals at cardiometabolic risk. This study investigated the effect of changing selected nutrients intake on glucose metabolism during a lifestyle intervention tailored to living conditions of prediabetic Brazilians.

Subjects/methods: 183 prediabetic adults treated under the Brazilian public health system underwent an 18-month intervention on diet and physical activity. Dietary counseling focused on reducing saturated fat replaced by unsaturated fatty acids. Data were collected at baseline and after follow-up. ANOVA and multiple linear regression were used to test association of changes in nutrients intake with changes in plasma glucose.

Results: Changes in fasting and 2-h plasma glucose but not in weight, HOMA-IR or C-reactive protein decreased after intervention across tertiles of MUFA changes (p -trend 0.017 and 0.024, respectively). Regression models showed that increase in MUFA intake was independently associated with reduction in fasting (β -1.475, $p = 0.008$) and 2-h plasma glucose (β -3.321, $p = 0.007$). Moreover, increase in soluble fibers intake was associated with decrease in fasting plasma glucose (β -1.579, $p = 0.038$). Adjustment for anthropometric measurements did not change the results but did after including change in insulin in the models.

Conclusions: Increases of MUFA and soluble fibers intakes promote benefits on glucose metabolism, independently of adiposity, during a realistic lifestyle intervention in at-risk individuals. Mechanisms mediating these processes may include mainly insulin sensitivity improvement.

Keywords: Monounsaturated fatty acids, Fiber intake, Lifestyle intervention, Glucose metabolism

Background

Obesity-related diseases, such as type 2 diabetes and cardiovascular disease, are major preventable problems which could be attenuated by a healthy diet and exercise [1,2]. However, long-term compliance with a healthy lifestyle is a challenge, particularly in emerging countries, where populations have less access to healthy foods, usually more expensive, and fewer opportunities for exercising. Dietary recommendations have emphasized reduction in fat consumption and encouraged fiber intake [3]. The deleterious effects of saturated fatty acids (SFA) on cardiovascular risk

profile obfuscated the benefits of unsaturated fat, whose cardioprotective role has been reinforced in more recent publications [4,5]. Observational studies reported lower cardiovascular mortality rates in populations consuming high proportions of dietary unsaturated fatty acids and fibers [6]. Underlying mechanisms involve inflammatory mediators which interfere in glucose metabolism [7]. However, a diet rich in MUFA did not improve insulin sensitivity in healthy participants of a Nordic randomized clinical trial, except for a subgroup with a total fat intake < 37% of energy [8]. It remains unclear whether beneficial effects on glucose metabolism are independent of body weight [9,10]. Also, for cardiovascular prevention, a mixture of soluble and insoluble fibers has been

* Correspondence: sandrafv@usp.br
Department of Epidemiology, School of Public Health, University of São Paulo, São Paulo, Brazil

recommended. High-fiber diets have been associated with benefits on glucose and lipid metabolism and may lower risk of cardiovascular events [11]. Observational and prospective studies provided evidence of improvement in insulin sensitivity [12,13] but the effect of fibers on inflammatory process is not yet well established [14].

Efficacy of the PREDIMED diet on reducing weight gain [15] and preventing cardiometabolic outcomes [16] has motivated several countries to change their eating habits. Low acceptance of this dietary pattern outside Mediterranean region was described in a Northern European population [17]. In Latinos living in South America, a better compliance with a diet rich in vegetable oil, whole grains, fruits and vegetables, could be expected considering their ancestry and local food availability.

Effectiveness of interventions on quality of fat and amount of dietary fiber, tailored to public health systems of developing countries, was scarcely investigated. In general, dietary interventions imply food restrictions; instead of excluding foods, replacement or even addition may be a better strategy to achieve metabolic benefits. We hypothesized that realistic changes in Brazilian eating habits may facilitate compliance with impact on glucose metabolism of individuals at cardiometabolic risk. This study investigated the effect of changing selected nutrients intake on glucose metabolism during a lifestyle intervention tailored to living conditions of prediabetic Brazilians.

Subjects and methods

During 2008 and 2009, 438 individuals aged 18 to 79 years, treated under the public health system of the São Paulo city, Brazil, were screened for type 2 diabetes using a questionnaire adapted from the FINDRISC [18] and capillary glycemia. Individuals who seek this assistance tend to have low incomes and approximately 53% of the sample had up to 8 years of schooling. Selected individuals were invited to a clinical examination and laboratory tests including a 75-gram oral glucose tolerance test. Those with prediabetes (impaired fasting glycemia or impaired glucose tolerance) [19] were invited to participate in 18-month lifestyle interventions for diabetes prevention. Exclusion criteria were overt diabetes, medical history of neurological or psychiatric disturbances and thyroid, liver, renal and infectious diseases. The Institutional Ethics Committee approved the study and written consent was obtained from all participants. This trial was registered in the Brazilian registry center of the WHO International Clinical Trials Registry Platform (RBR #65 N292 at www.ensaiosclinicos.gov.br).

From 230 eligible individuals, 183 agreed to participate and 129 completed the intervention period until year 2010 (Figure 1). Among those who did not agree to participate there was a predominance of men; baseline socio-demographic, anthropometric and metabolic variables

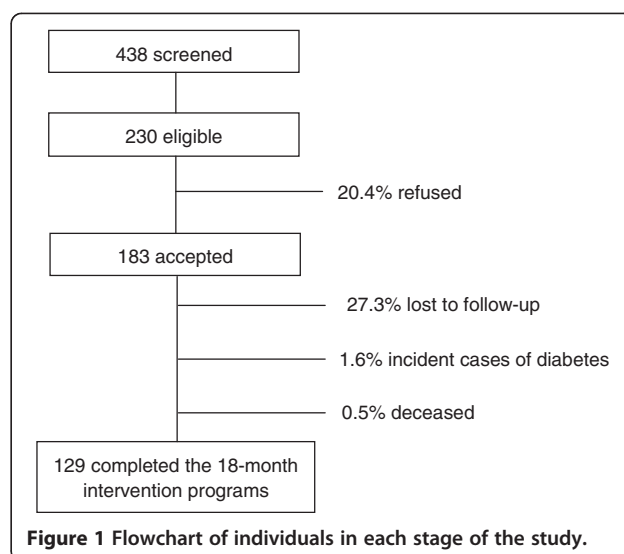


Figure 1 Flowchart of individuals in each stage of the study.

of non-participants did not differ from participants. Data of participants who were lost to follow-up were similar to those who completed the study. Drop-outs were mainly due to limited time to attend the visits during business hours.

Study protocol

Participants were randomly assigned to one of two 18-month interventions on dietary habits and physical activity. Both interventions have quarterly medical consultations when counseling for changing lifestyle was reinforced but differed by the inclusion of psychoeducative sessions [20,21]. Questionnaires and clinical data were collected at baseline and after follow-up. Baseline clinical data of the groups of participants were similar [22] and also the effects of the two types of interventions were comparable (data not shown). For the purpose of this study, the total sample was analyzed independent of the intervention type.

Dietary counseling was based on caloric restriction for those with elevated body mass index, reduction in foods rich in SFA (butter, whole milk and whole dairy products, visible fatty from meats and cold meats) encouraging those rich in unsaturated fatty acids (1 tablespoon of olive oil at lunch and another at dinner every day, at least 2 servings of fish per week, nuts and avocado whenever possible), as well as on high intake of soluble and insoluble fibers (at least 5 servings of fruits and vegetables per day, 1 or 2 servings of legumes and at least half of daily grains from whole-grain sources). Intervention goals were SFA intake $\leq 10\%$ per day, total fiber intake ≥ 20 g/day, physical activity ≥ 150 minutes/week and weight loss $\geq 5\%$ when indicated.

Three nonconsecutive 24-hour dietary recalls (two weekdays and one weekend day) were obtained by trained

nutritionists, based in the USDA Multi-Pass Method [23]. The long version of the International Physical Activity Questionnaire was employed to assess physical activity level [24]. Blood pressure was measured at rest in sitting position by an automatic blood pressure device (Omron HEM-712C, Omron Health Care, USA). The average of the last two recorded measurements was used in analyses.

Participants were submitted to a 75-gram oral glucose tolerance test. Plasma glucose and lipoproteins were immediately determined and aliquots were frozen at -80°C for further determinations of inflammatory markers and hormones. Ultra sensitivity C-reactive (CRP) and tumor necrosis factor-alpha (TNF- α) concentrations were determined by immunoenzyme chemiluminescent assay (Immulite, Diagnostic Products Corporation, Los Angeles, CA, USA) and insulin by immunometric assay (AutoDelfia, Perkin Elmer Life Sciences Inc, Norton, OH, USA). Homeostasis model assessment (HOMA-IR) was used to assess insulin resistance [25].

Statistical analysis

Household measurements of foods were transformed into measurement units and nutritional values calculated using the Nutrition Data System for Research (Nutrition Coordinating Center, Minneapolis, US). Participants with energy intake < 500 kcal were excluded from the analysis [26]. Mean nutrient intakes were expressed in grams and/or percent of total energy intake (% E). Dietary data were adjusted according to the method of Willett & Stampfer [27].

Data were expressed as means and standard deviations or percentages. Normality of variables was verified with histogram and Kolmogorov-Smirnov test. When distributions were skewed they were log-transformed before analysis and values were back-transformed to return to the natural scale. Student *t* test (or non-parametric equivalent) was used for comparisons of variables before and after intervention and Pearson's coefficient to test correlations between changes in variables. Changes in nutrient intake were categorized into tertiles; ANOVA with Bonferroni's method for pair comparisons was employed to compare changes in plasma glucose across tertiles and p-trend calculated. Dietary variables with a p-value < 0.20 were selected for multivariate analysis. Stepwise linear regression was used to analyze association with changes in fasting or post-load plasma glucose (dependent variables), with adjustments for age, sex, change in leisure physical activity, change in SFA, family history of diabetes and type of intervention. Also, weight or waist circumference, CRP and insulin were included in final models to examine the influence of body adiposity, inflammation and insulin resistance mediating the relationship between dietary intake and glucose homeostasis. Coefficients and 95% confidence intervals were provided. Analyses were performed using

Statistical Package for Social Sciences version 17.0 for Windows (SPSS Inc., Chicago, Illinois, USA). A p-value of < 0.05 was considered significant.

Results

Mean age of 183 participants (65% women) was 54.7 ± 12.3 years and 86% were overweight or obese at baseline. After intervention, reductions in total energy (1.822 ± 679 to 1.542 ± 548 kcal/day, $p < 0.01$), carbohydrates (51.0 ± 6.9 to $49.6 \pm 6.7\%$ of energy, $p = 0.036$), added sugars (36.8 ± 20.3 to $28.5 \pm 20.8\%$ of energy, $p < 0.01$) and *trans* fatty acids (3.3 ± 2.3 to 2.6 ± 2.2 g, $p < 0.01$) intakes were found, but not in unsaturated fat and fibers intakes and physical activity level (Table 1). Additionally, decreases in weight (78.7 ± 14.8 to 77.0 ± 14.9 kg, $p < 0.01$), waist circumference (101.1 ± 13.0 to 98.7 ± 12.3 cm, $p < 0.01$), mean blood pressure (109.7 ± 14.6 to 95.0 ± 10.1 mmHg, $p < 0.01$), fasting plasma glucose (98.7 ± 11.5 to 95.9 ± 12.1 mg/dL, $p = 0.029$), LDL-c (130.2 ± 40.5 to 121.3 ± 40 mg/dL, $p = 0.023$), HOMA-IR (2.49 ± 1.81 to 1.66 ± 0.91 , $p < 0.01$) and inflammatory markers were detected as well as increase in HDL-c (42.5 ± 12.5 to 49.5 ± 14.6 mg/dL, $p < 0.01$).

In average, MUFA intake was the same after intervention, since several participants increased but a proportion decreased consumption. Changes in MUFA intake were found to be inversely correlated to changes in fasting ($r = -0.286$; $p = 0.001$) and 2-hour plasma glucose ($r = -0.222$; $p = 0.011$) (Figure 2). Changes in other fatty acids and other nutrients intakes were not significantly correlated to changes in glucose levels.

Significant trends to reductions in fasting and 2-hour plasma glucose after intervention across tertiles of MUFA changes (p-trend = 0.017 and 0.024, respectively) were verified but not in body weight, HOMA-IR or CRP concentration (Table 2). When stratifying according to tertiles of SFA, *trans* fatty acids or of fiber intake changes, no association was detected (data not shown).

In multiple linear regression, increase in MUFA intake was associated with reduction in fasting [$\beta -1.90$ (95% CI -3.08 ; -0.72)] and 2-h plasma glucose [$\beta -3.55$ (95% CI -6.30 ; -0.80) (-4.78 ; -0.62)], adjusted for age, sex, change in leisure physical activity and in saturated fatty acids, family history of diabetes, type of intervention and changes in body weight, waist circumference and CRP levels (Table 3, Model 1 + Change in C-reactive protein). Moreover, increase in soluble fibers intake was independently associated with decrease in fasting plasma glucose only [$\beta -1.53$ (-3.04 ; -0.02)]. All other changes in dietary variables were not associated with changes in plasma glucose. Additional adjustments for anthropometric variables changes did not modify the associations of MUFA and soluble fibers with plasma glucose. On the other hand, when changes in CRP were added, association of soluble

Table 1 Mean (\pm standard deviation) of dietary, physical activity and clinical data of participants at baseline and after intervention

	Baseline	After intervention	P-value
• Daily habits variables			
Energy (kJ and kcal/day)	7,626 \pm 2,842 (1,822 \pm 679)	6,455 \pm 2,294 (1,542 \pm 548)	<0.001
Carbohydrate (% E)	51.0 \pm 6.9	49.6 \pm 6.7	0.036
Added sugar (g)	36.8 \pm 20.3	28.5 \pm 20.8	<0.001
Protein (% E)	17.9 \pm 3.5	19.9 \pm 4.1	<0.001
Total fat (% E)	31.4 \pm 5.5	31.3 \pm 5.6	0.847
Saturated fatty acids (% E)	9.7 \pm 2.9	9.6 \pm 2.7	0.658
Monounsaturated fatty acids (% E)	10.8 \pm 2.6	10.8 \pm 2.7	0.951
Polyunsaturated fatty acids (% E)	8.2 \pm 2.1	8.1 \pm 2.0	0.724
<i>Trans</i> fatty acids (g)	3.3 \pm 2.3	2.6 \pm 2.2	<0.001
Soluble fibers/1,000 kcal (g)*	2.4 \pm 1.3	2.2 \pm 1.6	0.099
Unsoluble fibers/1,000 kcal (g)*	6.9 \pm 2.8	6.9 \pm 3.7	0.222
Leisure physical activity (min/week)*	36.6 \pm 66.3	46.4 \pm 82.0	0.466
• Clinical variables			
Body weight (kg)	78.7 \pm 14.8	77.0 \pm 14.9	<0.001
Waist circumference (cm)	101.1 \pm 13.0	98.7 \pm 12.3	<0.001
Mean blood pressure (mmHg)	109.7 \pm 14.6	95.0 \pm 10.1	<0.001
Fasting plasma glucose (mg/dL)	98.7 \pm 11.5	95.9 \pm 12.1	0.029
2-h plasma glucose (mg/dL)	117.5 \pm 27.7	113.2 \pm 30.5	0.111
Triglycerides (mg/dL)	157.3 \pm 67.2	149.3 \pm 81.3	0.191
LDL-cholesterol (mg/dL)	130.2 \pm 40.5	121.3 \pm 40.0	0.023
HDL-cholesterol (mg/dL)	42.5 \pm 12.5	49.5 \pm 14.6	<0.001
HOMA-IR*	2.49 \pm 1.81	1.66 \pm 0.91	<0.001
C-reactive protein (mg/dL)*	0.34 \pm 0.24	0.04 \pm 0.05	<0.001
Tumor necrosis factor- α (pg/dL)*	12.5 \pm 6.3	10.4 \pm 6.8	<0.001

Student t test; *Wilcoxon test.

E, total energy intake.

Individuals who were diagnosed with diabetes during the intervention period were excluded from this analysis.

fibers lost significance. Similarly, statistical significance disappeared adding changes in insulin to model 1 of MUFA and soluble fibers.

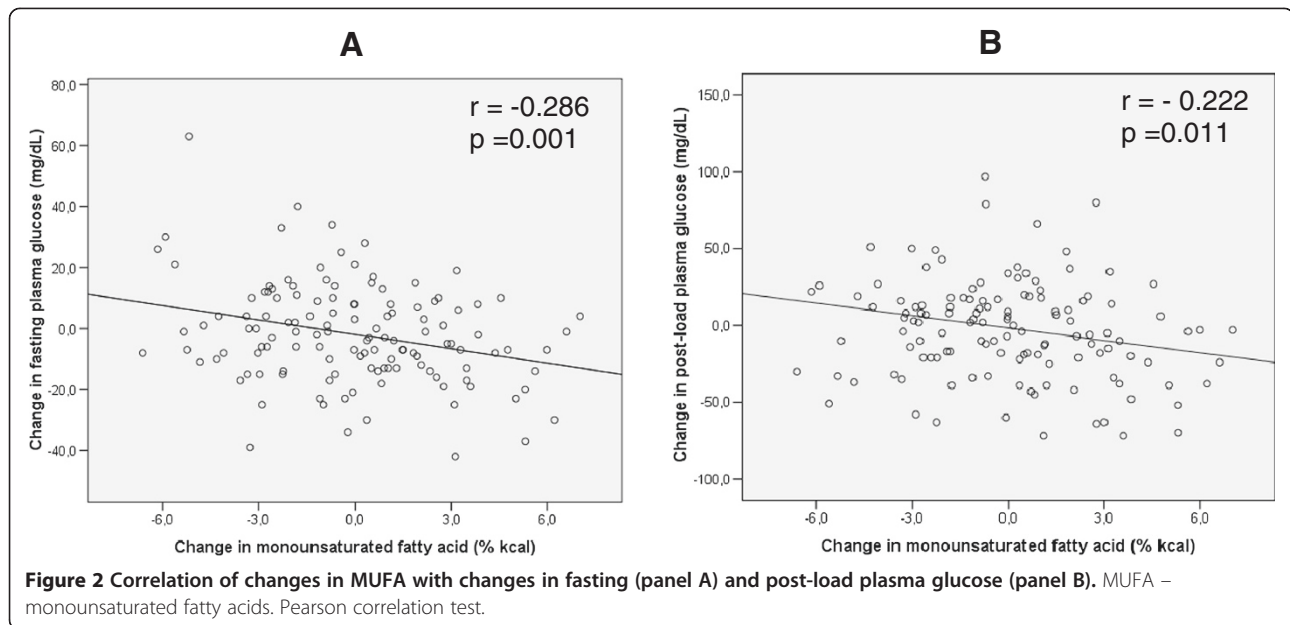
Discussion

This real-life lifestyle intervention in at-risk individuals treated under the Brazilian public health system was able to improve dietary habits, inducing benefits in cardiometabolic profile. Our findings are relevant since they indicate that benefits previously described in efficacy trials for diabetes prevention from developed countries [2,28] may be feasible in developing countries where projection of this disease is mainly alarming [29].

It was our interest to investigate which nutrients could most contribute to the improvement of glucose metabolism in order to orientate future public health policies. In agreement with prospective studies involving Mediterranean-style diets, our data on MUFA and soluble fiber intakes

suggested that even small increments in these nutrients were able to induce favorable effects on glucose metabolism [5,15,16].

In contrast to the usual concern regarding SFA recommendation for individuals at high cardiovascular risk [2,28], our most interesting finding was related to MUFA intake. Although increased mean MUFA intake could not be demonstrated in our sample, its protective effect on glucose metabolism was consistently suggested in all analyzes performed. The large intake range allowed examining how differences in MUFA intake were associated with changes in clinical outcomes. Even after adjustment for several variables, MUFA intake maintained associated with reductions in plasma glucose levels. Each increment of 5% energy of MUFA ingested results in -7.5 mg/dL and -16.5 mg/dL decreases in fasting and 2-h plasma glucose, respectively. We speculate that, in the long-term, such glycemic decreases – even within the non-diabetic



range – could have a beneficial role on the natural history toward type 2 diabetes. Based on the observations that cardiovascular outcomes occurred in a continuum [30], the term dysglycemia – referring to near-normal fasting plasma glucose levels – has been used [31]. In this early stage, pathophysiological mechanisms, such as low-grade inflammation and insulin resistance, contribute to increase cardiometabolic risk.

Along the same line, clinical trials have previously showed that substitution of SFA by MUFA improves insulin sensitivity [8,32]. Accordingly, the PREDIMED observed a 52% reduction in diabetes incidence among individuals submitted to Mediterranean diets [5]. In our multiple analysis, adjustment for change in insulin caused loss of significance on the effect of MUFA intake, suggesting that the beneficial effects on glucose metabolism may occur via improvement on insulin sensitivity.

In insulin-resistant individuals with several metabolic disturbances, a high-MUFA diet was considered a good option for nutritional management of glucose and lipid metabolism, as well as hepatic steatosis [33,34]. Despite

lack of MUFA increase, our intervention was able to reduce HOMA-IR, concomitantly with improvement in plasma glucose and lipids levels. This nutrient is shown to affect cell membrane fatty acids composition and function, including changes in membrane fluidity, ion permeability and insulin receptor affinity, which could enhance glucose uptake [35]. Animal studies described contrasting effects SFA and MUFA enriched diets on GLUT4 translocation and provided evidence on possible mechanisms explaining their impact on glucose metabolism [36,37]. MUFA-induced improvement in insulin sensitivity seemed to be associated with a preserved IRS-1/PI3K insulin signaling. Considering that this pathway is known to be influenced by inflammatory mediators, we expected that this nutrient could attenuate circulating levels of CRP and/or TNF- α [38]. This hypothesis was not supported in our study since adjusting for CRP changes did not interfere on the MUFA impact in plasma glucose. How dietary fatty acids composition modifies insulin sensitivity in humans requires further investigations using more appropriate study design.

Table 2 Mean values of changes in clinical variables across tertiles of changes in MUFA intake (% energy)

	Tertile 1 -6.6 to -1.3	Tertile 2 -1.3 to 1.1	Tertile 3 1.1 to 7.0	P-trend
Change in weight (kg)	-2.5 \pm 4.0	-1.0 \pm 3.8	-1.4 \pm 3.8	0.151
Change in fasting plasma glucose (mg/dL)	3.1 \pm 18.0	-1.6 \pm 16.1	-6.9 \pm 13.3 [†]	0.017
Change in 2-h plasma glucose (mg/dL)	3.1 \pm 40.1	5.9 \pm 31.6	-13.5 \pm 33.2 [‡]	0.024
Change in HOMA-IR	-1.1 \pm 1.9	-0.8 \pm 1.5	-0.6 \pm 1.5	0.448
Change in C-reactive protein (mg/dL)	-0.32 \pm 0.23	-0.25 \pm 0.19	-0.30 \pm 0.24	0.273

ANOVA and Bonferroni's method for pair comparisons.

[†]p < 0.05 vs. tertile 1 [‡]p < 0.05 vs. tertile 2.

Table 3 Association coefficients between intervention-induced changes in nutrients intake and in fasting and 2-h plasma glucose

	Change in fasting plasma glucose		Change in 2-h plasma glucose	
	β (95% CI)	p-value	β (95% CI)	p-value
<i>Crude</i>				
Change in MUFA (% E)	-1.58 (-2.51; -0.65)	0.001	-2.70 (-4.78; -0.62)	0.011
Change in soluble fibers (g)	-0.45 (-1.71; 0.81)	0.481	-1.24 (-4.01; 1.54)	0.379
<i>Model 1</i>				
Change in MUFA (% E)	-1.48 (-2.55; -0.40)	0.008	-3.32 (-5.71; -0.93)	0.007
Change in soluble fibers (g)	-1.58 (-3.07; -0.09)	0.038	-1.88 (-5.19; 1.44)	0.264
<i>Model 1 + Change in weight</i>				
Change in MUFA (% E)	-1.48 (-2.57; -0.39)	0.008	-3.44 (-5.85; -1.04)	0.005
Change in soluble fibers (g)	-1.57 (-3.08; -0.06)	0.041	-1.71 (-5.05; 1.63)	0.311
<i>Model 1 + Change in waist circumference</i>				
Change in MUFA (% E)	-1.52 (-2.61; -0.42)	0.007	-3.68 (-6.07; -1.30)	0.003
Change in soluble fibers (g)	-1.53 (-3.04; -0.02)	0.047	-1.57 (-4.77; 1.23)	0.378
<i>Model 1 + Change in C-reactive protein</i>				
Change in MUFA (% E)	-1.90 (-3.08; -0.72)	0.002	-3.55 (-6.30; -0.80)	0.012
Change in soluble fibers (g)	-1.28 (-2.89; 0.33)	0.825	-2.54 (-6.28; 1.20)	0.181
<i>Model 1 + Change in 2-h insulin</i>				
Change in MUFA (% E)	-0.54 (-2.85; 1.76)	0.631	-3.20 (-8.27; 1.87)	0.205
Change in soluble fibers (g)	-0.84 (-3.45; 1.76)	0.719	0.20 (-5.13; 5.93)	0.943

Multiple linear regression analysis.

CI, confidence interval; MUFA, monounsaturated fatty acids; E, total energy intake.

Model 1: age, sex, change in leisure physical activity, change in saturated fatty acids, family history of diabetes (no or yes), type of intervention.

In multiple linear regression, the cardiometabolic protective role of dietary fiber was also explored. Such analysis indicated that each increment of 5 gram of soluble fibers ingested should result in a reduction of 8 mg/dL in fasting plasma glucose. Increase in fiber intake was a goal of our intervention [3,39]. In agreement with our results, an analysis of a subset of participants of the PREDIMED study showed that reductions on fasting glucose were higher among individuals in the upper 20% of fiber intake [40]. Despite the health benefits of fiber have been consistently demonstrated, there are still controversies on which fiber type has the most protective role on diabetes prevention [41,42].

Fiber-rich diets are usually less energy dense, richer in micronutrients, and bring a feeling of satiety sooner [39]. In relation to benefits of soluble fibers on the glucose metabolism, it has been proposed that their viscosity contributes to slow gastric emptying rates, digestion and the absorption of glucose, consequently reducing glycemic excursion and insulin secretion. The stability of plasma glucose and insulin levels may potentially contribute to enhancing peripheral insulin sensitivity [39,43]. Moreover, effects induced by the presence of fiber in the stomach and duodenum interfere in glucagon-like peptide

1 secretion, which could affect not only insulin release, but also insulin sensitivity [44]. In the present study, the loss of significance of soluble fibers after adjustment for change in insulin concentration reinforces that this nutrient improve plasma glucose by interfering on insulin release and/or action. Furthermore, adjusting for change in CRP, the effect the soluble fibers was lost, suggesting that such benefit could be occurring via systemic inflammation. In fact, anti-inflammatory effect of fiber was previously reported [45], as well as the deterioration of insulin sensitivity induced by low-grade inflammation [46].

Noteworthy, the effects of soluble fibers and MUFA intake were not modified after addition of variables change in weight or in waist circumference in the models, supporting that the reduction in adiposity may not be the main factor responsible for the dietary-induced benefits on glucose metabolism found in the current study. In agreement with our findings, an intervention with Mediterranean diet (>40% of energy from fat and non-energy-restricted), without specific orientation to weight loss, reduced the frequencies of metabolic disturbances [47].

Although the reduction in SFA intake has been recommended to improve insulin sensitivity, association between

change in SFA and change in plasma glucose was not found in the present study. Our results are in agreement with the LIPGENE which did not find beneficial effect on insulin sensitivity after reducing the amount of this type of fat [48].

On daily basis, soluble fibers and MUFA intake could be increased by the consumption of oat and olive oil. According to our findings, addition of two tablespoons of olive oil (26 g = 19 g of MUFA = 8.6% of total energy intake) in a 2000 kcal diet would reduce fasting plasma glucose in 12.7 mg/dL and 2-hour glucose in 28.6 mg/dL. Similarly, adding two tablespoons of oats (30 g = 1.74 g of soluble fibers) would decrease fasting plasma glucose in 2.7 mg/dL. Both changes would be able, therefore, to reduce fasting glucose in 15.4 mg/dL and 2 h-plasma glucose in 28.6 mg/dL. We believe that these changes in the eating habits are feasible, even in middle-income countries. Adding a new food in dietary plan may be easier than restricting (such as restriction of SFA sources). Also, we speculate that soluble fibers and MUFA-rich foods in the meals could enhance satiety minimizing energy intake and facilitating body weight control.

Other mechanisms have been more recently proposed to explain relationships between diet changing and glucose metabolism, which might be mediated by the gut microbiota [49]. Understanding how dietary changes could shape this microbial ecosystem and then interact with host's metabolism altering insulin sensitivity may contribute to orient lifestyle interventions.

Our study has limitations; some are related to intrinsic weakness of the available techniques to quantify food intake. However, several precautions were taken to improve the accuracy of the dietary data collected. We cannot exclude that different populations respond distinctly to the same nutrient modification in part due to genetic characteristics. Our study did not include a large sample, but has the strength of having a longitudinal design, conducted in an at-risk miscigenated population of a developing country. Despite the MUFA intake have not been an intervention goal, our results call attention to the importance of this fatty acid in the context of fat intake recommendations to individuals at cardiometabolic risk. Further lifestyle interventions designed for high-risk populations should consider increasing MUFA intake as dietary goal.

In summary, we conclude that increases of MUFA and soluble fibers intakes promote benefits on glucose metabolism, independently of adiposity, during a realistic lifestyle intervention in at-risk individuals. Possible mechanisms mediating these processes may mainly include improvement in insulin sensitivity. Encouraging fiber and MUFA intakes may be a good strategy for at-risk individuals without necessarily restricting energy consumption.

Competing interests

The authors declare that they have no competing interests.

Authors' contributions

CRB: study conception and design, data collection, analysis and interpretation of data, drafting the manuscript. AC: data collection, analysis and interpretation of data. MLRC: data collection, analysis and interpretation of data. MMP: data collection, analysis and interpretation of data. LDF: data collection, analysis and interpretation of data. A S-C: data collection, analysis and interpretation of data. SRGF: study conception and design, analysis and interpretation of data, drafting the manuscript, critical revision. All authors read and approved the final manuscript.

Acknowledgements

Research supported by FAPESP (# 07/55120-0).

Received: 1 September 2014 Accepted: 30 November 2014

Published: 7 December 2014

References

1. Gaesser GA, Angadi SS, Sawyer BJ: Exercise and diet, independent of weight loss, improve cardiometabolic risk profile in overweight and obese individuals. *Phys Sportsmed* 2011, **39**(2):87-97.
2. Tuomilehto J, Lindstrom J, Eriksson JG, Valle TT, Hamalainen H, Ilanne-Parikka P, Keinänen-Kiukaanniemi S, Laakso M, Luoharanta A, Rastas M, Salminen V, Uusitupa M: Prevention of type 2 diabetes mellitus by changes in lifestyle among subjects with impaired glucose tolerance. *N Engl J Med* 2001, **344**(18):1343-1350.
3. American Diabetes Association: Nutrition recommendations and interventions for diabetes: a position statement of the American diabetes association. *Diabetes Care* 2008, **31**(1):S61-S78.
4. Mente A, de Koning L, Shannon HS, Anand SS: A systematic review of the evidence supporting a causal link between dietary factors and coronary heart disease. *Arch Intern Med* 2009, **169**(7):659-669.
5. Salas-Salvadó J, Bulló M, Babio N, Martínez-González MA, Ibarrola-Jurado N, Basora J, Estruch R, Covas MI, Corella D, Arós F, Ruiz-Gutiérrez V, Ros E: PREDIMED Study Investigators: Reduction in the incidence of type 2 diabetes with the Mediterranean diet: results of the PREDIMED-Reus nutrition intervention randomized trial. *Diabetes Care* 2011, **34**(1):14-19.
6. Knuops KT, de Groot LC, Kromhout D, Perrin AE, Moreiras-Varela O, Menotti A, van Staveren WA: Mediterranean diet, lifestyle factors, and 10-year mortality in elderly European men and women: the HALE project. *JAMA* 2004, **292**(12):1433-1439.
7. Schwingshackl L, Hoffmann G: Mediterranean dietary pattern, inflammation and endothelial function: a systematic review and meta-analysis of intervention trials. *Nutr Metab Cardiovasc Dis* 2014, **24**(9):929-939.
8. Vessby B, Unsitupa M, Hermansen K, Riccardi G, Rivellese AA, Tapsell LC, Nalsen C, Berglund L: Substituting dietary saturated for monounsaturated fat impairs insulin sensitivity in healthy men and women: the KANWU study. *Diabetologia* 2001, **44**:312-319.
9. Jebb SA, Lovegrove JA, Griffin BA, Frost GS, Moore CS, Chatfield MD, Bluck LJ, Williams CM, Sanders TA: RISCK Study Group: Effect of changing the amount and type of fat and carbohydrate on insulin sensitivity and cardiovascular risk: the RISCK trial. *Am J Clin Nutr* 2010, **92**(4):748-758.
10. Schwingshackl L, Strasser B, Hoffmann G: Effects of monounsaturated fatty acids on glycaemic control in patients with abnormal glucose metabolism: a systematic review and meta-analysis. *Ann Nutr Metab* 2011, **58**:290-296.
11. Threapleton DE, Greenwood DC, Evans CEL, Cleghorn CL, Nykjaer C, Woodhead C, Cade JE, Gale CP, Burley VJ: Dietary fibre intake and risk of cardiovascular disease: systematic review and meta-analysis. *BMJ* 2013, **347**:f6879.
12. McKeown NM, Meigs JB, Liu S, Wilson PW, Jacques PF: Whole-grain intake is favorably associated with metabolic risk factors for type 2 diabetes and cardiovascular disease in the Framingham offspring study. *Am J Clin Nutr* 2002, **76**(2):390-398.
13. Ylönen K, Saloranta C, Kronberg-Kippilä C, Groop L, Aro A, Virtanen SM: Botnia dietary study. Associations of dietary fiber with glucose metabolism in nondiabetic relatives of subjects with type 2 diabetes: the botnia dietary study. *Diabetes Care* 2003, **26**(7):1979-1985.

14. Buyken AE, Goletzke J, Joslowski G, Felbick A, Cheng G, Herder C, Brand-Miller JC: **Association between carbohydrate quality and inflammatory markers: systematic review of observational and interventional studies.** *Am J Clin Nutr* 2014, **99**(4):813–833.
15. Razquin C, Martínez JA, Martínez-González MA, Mitjavila MT, Estruch R, Martí A: **A 3 years follow-up of a Mediterranean diet rich in virgin olive oil is associated with high plasma antioxidant capacity and reduced body weight gain.** *Eur J Clin Nutr* 2009, **63**(12):1387–1393.
16. Estruch R, Ros E, Salas-Salvadó J, Covas MI, Corella D, Arós F, Gómez-Gracia E, Ruiz-Gutiérrez V, Fiol M, Lapetra J, Lamuela-Raventós RM, Serra-Majem L, Pintó X, Basora J, Muñoz MA, Sorlí JV, Martínez JA, Martínez-González MA: **Primary prevention of cardiovascular disease with a Mediterranean diet.** *N Engl J Med* 2013, **368**(14):1279–1290.
17. Due A, Larsen TM, Hermansen K, Stender S, Holst JJ, Toubro S, Martinussen T, Astrup A: **Comparison of the effects on insulin resistance and glucose tolerance of 6-mo high-monounsaturated-fat, low-fat, and control diets.** *Am J Clin Nutr* 2008, **87**(4):855–862.
18. Lindstrom J, Tuomilehto J: **The diabetes risk score: a practical tool to predict type 2 diabetes risk.** *Diabetes Care* 2003, **26**:725–731.
19. American Diabetes Association: **Report of the expert committee on the diagnosis and classification of diabetes mellitus.** *Diabetes Care* 1997, **20**:1183–1197.
20. Cezaretto A, Siqueira-Catania A, Barros CR, Salvador EP, Ferreira SRG: **Benefits on quality of life concomitant to metabolic improvement in intervention program for prevention of diabetes mellitus.** *Qual Life Res* 2012, **21**:105–113.
21. Barros CR, Cezaretto A, Salvador EP, Siqueira-Catania A, Ferreira SRG: *Programa de Prevenção e Controle de Risco Cardiometabólico [Internet; in Portuguese].* Sao Paulo (SP): University of Sao Paulo, Faculty of Public Health, Department of Nutrition; 2011. Available in: <http://hygeia.fsp.usp.br/prevsm>.
22. Siqueira-Catania A, Cezaretto A, Barros CR, Salvador EP, Carvalho T, Ferreira SRG: **Cardiometabolic risk reduction through lifestyle intervention programs in the Brazilian public health system.** *Diabetol Metab Syndr* 2013, **5**:21.
23. Conway JM, Ingwersen LA, Vinyard BT, Moshfegh AJ: **Effectiveness of the US Department of Agriculture 5-step multiple-pass method in assessing food intake in obese and nonobese women.** *Am J Clin Nutr* 2003, **77**:1171–1178.
24. Craig CL, Marshall AL, Sjoström M, Bauman AE, Booth ML, Ainsworth BE, Pratt M, Ekelund U, Yngve A, Sallis JF, Oja P: **International physical activity questionnaire: 12-country reliability and validity.** *Med Sci Sports Exerc* 2003, **35**(8):1381–1395.
25. Matthews DR, Hosker JP, Rudenski AS, Naylor BA, Treacher DF, Turner RC: **Homeostasis model assessment: insulin resistance and B-cell function from fasting plasma glucose and insulin concentrations in man.** *Diabetologia* 1985, **28**:412–419.
26. Willett W: *Nutritional Epidemiology.* New York, NY: Oxford University Press; 1998.
27. Willett W, Stampfer MJ: **Total energy intake: implications for epidemiologic analyses.** *Am J Epidemiol* 1986, **124**:17–27.
28. Knowler WC, Barrett-Connor E, Fowler SE, Hamman RF, Lachin JM, Walker EA, Nathan DM: **The diabetes prevention program: reduction in the incidence of type 2 diabetes with lifestyle intervention or metformin.** *N Engl J Med* 2002, **346**:393–403.
29. International Diabetes Federation: *IDF Diabetes Atlas.* 6th edition. Brussels, Belgium: International Diabetes Federation; 2013.
30. Coutinho M, Gerstein HC, Wang Y, Yusuf S: **The relationship between glucose and incident cardiovascular events. A meta-regression analysis of published data from 20 studies of 95,783 individuals followed for 12.4 years.** *Diabetes Care* 1999, **22**(2):233–240.
31. Bianchi C, Miccoli R, Penoo G, Del Prato S: **Primary prevention of cardiovascular disease in people with dysglycemia.** *Diabetes Care* 2008, **31**(Suppl. 2):S208–S214.
32. Lopez S, Bermudez B, Ortega A, Varela LM, Pacheco YM, Villar J, Abia R, Muriana FJ: **Effects of meals rich in either monounsaturated or saturated fat on lipid concentrations and on insulin secretion and action in subjects with high fasting triglyceride concentrations.** *Am J Clin Nutr* 2011, **93**(3):494–499.
33. Gerhard GT, Ahmann A, Meeuw K, McMurry MP, Duell PB, Connor WE: **Effects of a low-fat diet compared with those of a high-monounsaturated fat diet on body weight, plasma lipids and lipoproteins, and glycemic control in type 2 diabetes.** *Am J Clin Nutr* 2004, **80**:668–673.
34. Bozzetto L, Prinster A, Annuzzi G, Costagliola L, Mangione A, Vitelli A, Mazzarella R, Longobardo M, Mancini M, Vigorito C, Riccardi G, Rivellese AA: **Liver fat is reduced by an isoenergetic MUFA diet in a controlled randomized study in type 2 diabetic patients.** *Diabetes Care* 2012, **35**(7):1429–1435.
35. Weickert MO: **What dietary modification best improves insulin sensitivity and why?** *Clin Endocrinol* 2012, **77**(4):508–512.
36. Risérus U, Willett WC, Hu FB: **Dietary fats and prevention of type 2 diabetes.** *Prog Lipid Res* 2009, **48**(1):44–51.
37. Moon JH, Lee JY, Kang SB, Park JS, Lee BW, Kang ES, Ahn CW, Lee HC, Cha BS: **Dietary monounsaturated fatty acids but not saturated fatty acids preserve the insulin signaling pathway via IRS-1/PI3K in rat skeletal muscle.** *Lipids* 2010, **45**:1109–1116.
38. Vassiliou EK, Gonzalez A, Garcia C, Tados JH, Chakraborty G, Toney JH: **Oleic acid and peanut oil high in oleic acid reverse the inhibitory effect of insulin production of the inflammatory cytokine TNF-alpha both in vitro and in vivo systems.** *Lipids Health Dis* 2009, **26**(8):25.
39. American Dietetic Association: **Position of American dietetic association: health implications of dietary fiber.** *J Am Diet Assoc* 2008, **108**:1716–1731.
40. Estruch R, Martínez-González MA, Corella D, Basora-Gallisa J, Ruiz-Gutiérrez V, Covas MI, Fiol M, Gómez-García E, López-Sabater MC, Escoda R, Pena MA, Diez-Espino J, Lahoz C, Lapetra J, Sáez G, Ros E, PREDIMED Study investigators: **Effects of dietary fibre intake on risk factors for cardiovascular disease in subjects at high risk.** *J Epidemiol Community Health* 2009, **63**:582–588.
41. Schulze MB, Schulz M, Heidemann C, Schienkiewitz A, Hoffmann K, Boeing H: **Fiber and magnesium intake and incidence of type 2 diabetes: a prospective study and meta-analysis.** *Arch Intern Med* 2007, **167**:956–965.
42. Cooper AJ, Ferozhi NG, Ye Z, Buijsse B, Arriola L, Balkau B, Barricarte A, Beulens JW, Boeing H, Buchner FL, Dahm CC, de Lauzon-Guillain B, Fagherazzi G, Franks PW, Gonzales C, Grioni S, Kaaks R, Key TJ, Masala G, Navarro C, Nilsson P, Overvad K, Panico S, Ramón Quirós J, Rolandsson O, Roswall N, Sacerdote C, Sánchez MJ, Slimani N, Sluijs I, et al: **Fruit and vegetable intake and type 2 diabetes: EPIC-InterAct prospective study and meta-analysis.** *Eur J Clin Nutr* 2012, **66**(10):1082–1092.
43. Lazarou C, Panagiotakos D, Matalas A-L: **The role of diet in prevention and management of type 2 diabetes: implications for public health.** *Crit Rev Food Sci Nutr* 2012, **52**(5):382–389.
44. Cummings DE, Overhuin J: **Gastrointestinal regulation of food intake.** *J Clin Invest* 2007, **117**:13–23.
45. King DE, Egan BM, Geesey ME: **Relation of dietary fat and fiber to elevation of C-reactive protein.** *Am J Cardiol* 2003, **92**(11):1335–1339.
46. Faloia E, Michetti G, De Robertis M, Luconi MP, Furlani G, Boscaro M: **Inflammation as a link between obesity and metabolic syndrome.** *J Nutr Metab* 2012, **2012**:1–7.
47. Mayneris-Perxachs J, Sala-Vila A, Chisaguano M, Castellote AI, Estruch R, Covas MI, Fitó M, Salas-Salvadó J, Martínez-González MA, Lamuela-Raventós R, Ros E, López-Sabater MC: **Effects of 1-year intervention with a Mediterranean diet on plasma fatty acid composition and metabolic syndrome in a population at high cardiovascular risk.** *PLoS One* 2014, **9**(3):e85202.
48. Tierney AC, McMonagle J, Shaw DI, Gulseth HL, Helal O, Saris WHM, Paniagua JA, Gotabek-Leszczynska I, Defoort C, Williams CM, Karsstrom B, Vessby B, Dembinska-Kiec A, López-Miranda J, Blaak EE, Drevon CA, Gibney MJ, Lovegrove JA, Roche HM: **Effects of dietary fat modification on insulin sensitivity and on other risk factors of the metabolic syndrome - LIPGENE: a European randomized dietary intervention study.** *Int J Obes* 2011, **35**:800–809.
49. Caricilli AM, Saad MJA: **Gut microbiota composition and its effects on obesity and insulin resistance.** *Curr Opin Clin Nutr Metab Care* 2014, **17**(4):312–318.

doi:10.1186/1758-5996-6-136

Cite this article as: Barros et al.: Realistic changes in monounsaturated fatty acids and soluble fibers are able to improve glucose metabolism. *Diabetology & Metabolic Syndrome* 2014 **6**:136.