

CORRECTION

Correction: *Phytomonas*: Trypanosomatids Adapted to Plant Environments

Eleanor Jaskowska, Claire Butler, Gail Preston, Steven Kelly

[Fig 1](#) does not include axis labels and has an outdated plant family name (Palmae). The authors have provided a corrected version here.



 OPEN ACCESS

Citation: Jaskowska E, Butler C, Preston G, Kelly S (2015) Correction: *Phytomonas*: Trypanosomatids Adapted to Plant Environments. PLoS Pathog 11(5): e1004927. doi:10.1371/journal.ppat.1004927

Published: May 19, 2015

Copyright: © 2015 Jaskowska et al. This is an open access article distributed under the terms of the [Creative Commons Attribution License](#), which permits unrestricted use, distribution, and reproduction in any medium, provided the original author and source are credited.

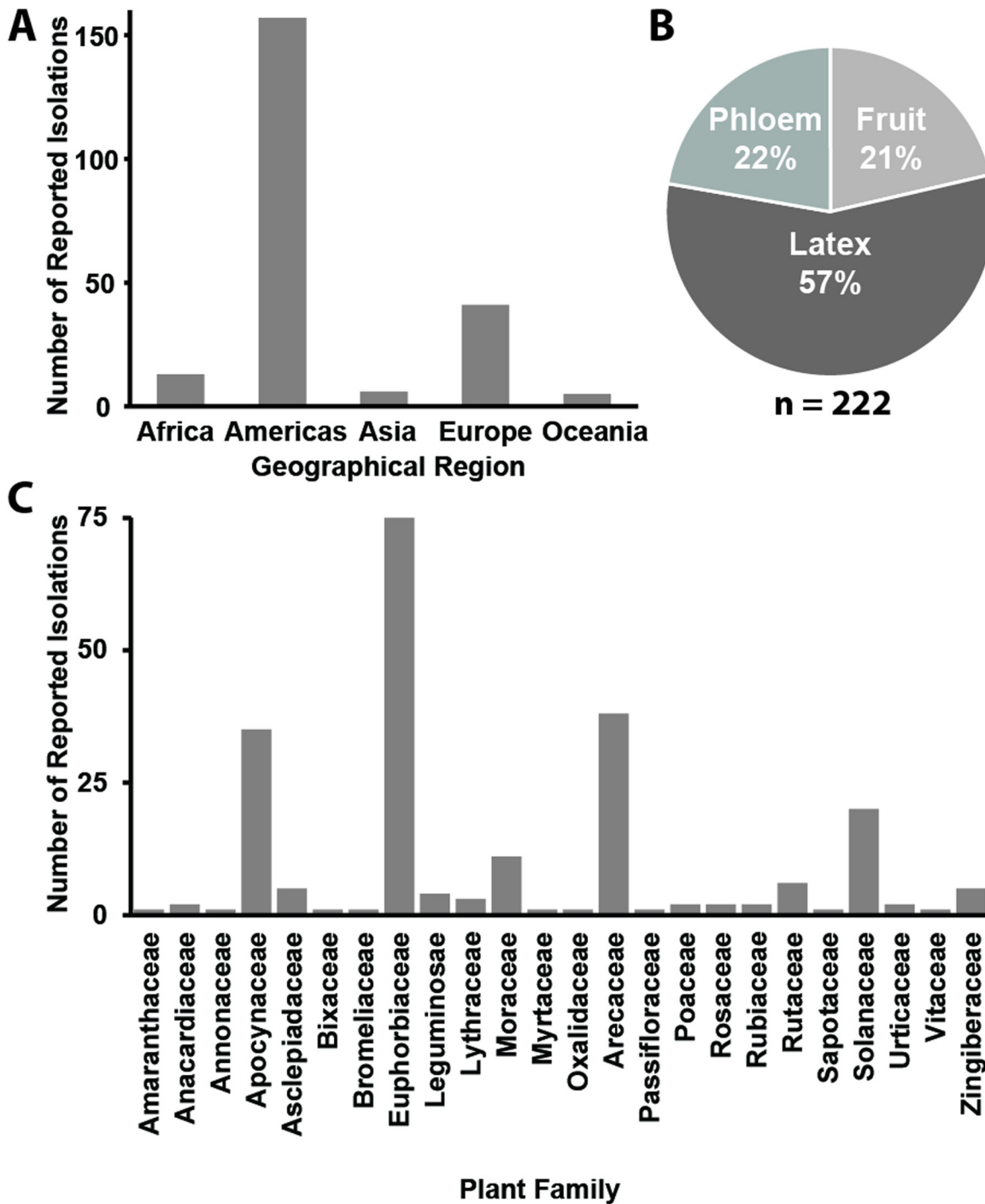


Fig 1. Summary of all known *Phytomonas* isolates. A) A bar chart depicting the number of reported isolations by continent. B) A pie chart depicting the plant host environment from which these isolations were made. C) A bar chart depicting the plant families from which these isolations were made. For further details see S1 Table.

doi:10.1371/journal.ppat.1004927.g001

Reference

1. Jaskowska E, Butler C, Preston G, Kelly S (2015) *Phytomonas*: Trypanosomatids Adapted to Plant Environments. PLoS Pathog 11(1): e1004484. doi: [10.1371/journal.ppat.1004484](https://doi.org/10.1371/journal.ppat.1004484) PMID: [25607944](https://pubmed.ncbi.nlm.nih.gov/25607944/)