



HHS Public Access

Author manuscript

J Biol Rhythms. Author manuscript; available in PMC 2016 June 01.

Published in final edited form as:

J Biol Rhythms. 2015 June ; 30(3): 163–182. doi:10.1177/0748730414563537.

The circadian clock in skin: implications for adult stem cells, tissue regeneration, cancer, aging, and immunity

Maksim V. Plikus^{1,4,5}, **Elyse Noelani Van Spyk**^{2,3,5}, **Kim Pham**^{1,4}, **Mikhail Geyfman**⁶, **Vivek Kumar**^{7,8}, **Joseph S. Takahashi**^{7,8}, and **Bogi Andersen**^{2,3,5}

¹ Department of Developmental and Cell Biology, University of California, Irvine, Irvine, CA 92697, USA.

² Department of Biological Chemistry, University of California, Irvine, Irvine, CA 92697, USA.

³ Department of Medicine, Division of Endocrinology, University of California, Irvine, Irvine, CA 92697, USA.

⁴ Sue and Bill Gross Stem Cell Research Center, University of California, Irvine, Irvine, CA 92697, USA.

⁵ Center for Complex Biological Systems, University of California, Irvine, Irvine, CA 92697, USA.

⁶ Kythera Biopharmaceuticals, Westlake Village, CA 91362, USA

⁷ Department of Neuroscience, University of Texas Southwestern Medical Center, Dallas, TX, USA.

⁸ Howard Hughes Medical Institute, University of Texas Southwestern Medical Center, Dallas, TX, USA

Abstract

Historically work on peripheral circadian clocks has been focused on organs and tissues that have prominent metabolic functions, such as liver, fat and muscle. In recent years, skin is emerging as a model for studying circadian clock regulation of cell proliferation, stem cell functions, tissue regeneration, aging and carcinogenesis. Morphologically skin is complex, containing multiple cell types and structures, and there is evidence for a functional circadian clock in most, if not all, of its cell types. Despite the complexity, skin stem cell populations are well defined, experimentally tractable and exhibit prominent daily cell proliferation cycles. Hair follicle stem cells also participate in recurrent, long-lasting cycles of regeneration -- the hair growth cycles. Among other advantages of skin is a broad repertoire of available genetic tools enabling the creation of cell-type specific circadian mutants. Also, due to the accessibility of the skin, *in vivo* imaging techniques can be readily applied to study the circadian clock and its outputs in real time, even at the single-cell level. Skin provides the first line of defense against many environmental and stress factors that exhibit dramatic diurnal variations such as solar UV radiation and temperature. Studies have already linked the circadian clock to the control of UVB-induced DNA damage and skin cancers. Due to the important role that skin plays in the defense against microorganisms, it represents a promising model system to further explore the role of the clock in the regulation of the body's

immune functions. To that end, recent studies have already linked the circadian clock to psoriasis, one of the most common immune-mediated skin disorders. The skin also provides opportunities to interrogate clock regulation of tissue metabolism in the context of stem cells and regeneration. Furthermore, many animal species feature prominent seasonal hair molt cycles, offering an attractive model for investigating the role of clock in seasonal organismal behaviors.

I. Introduction to the organization and function of the circadian clock in the skin

Day and night create widely different environments for the skin. As examples, risks of toxin or pathogen exposure, risk of physical injuries, ultraviolet (UV) radiation exposure, exposure to extreme temperatures, and the potential for water loss vary greatly depending on the time of day. Therefore, it should not come as a surprise if the circadian clock -- an evolutionary ancient system that adjusts organismal physiology to diurnal changes stemming from the rotation of the earth -- modulates skin functions. In fact, work in recent years has begun to elucidate the diverse functions of the circadian clock within skin.

A full description of the circadian clock is beyond the scope of this review, but at a molecular level the circadian clock consists of an autoregulatory gene expression feedback loop. Clock and Bmal1 transcription factors induce expression of their own inhibitors, Period (Per) and Cryptochrome (Cry), thereby creating self-sustainable 24-hour rhythms in gene expression. The nuclear receptors Ror and RevErb constitute an auxiliary transcriptional loop that regulates the expression Bmal1. Furthermore, by acting at their genomic regulatory sequences, the circadian clock transcription factors generate rhythmic oscillations in the expression of a large number of output genes, which are largely tissue- and cell type-specific (Mohawk et al., 2012). At least 1,400 genes involved in multiple different functions show circadian expression changes in mouse skin, suggesting that the circadian clock may, in fact, influence various aspects of skin physiology (Geyfman et al., 2012). In addition, while it is known that the central clock affects circadian rhythms within skin (Tanioka et al., 2009), new evidence indicates that the clock regulation of skin functions is not merely a consequence of the central suprachiasmatic nucleus clock exerting its influence via neuroendocrine mediators; rather skin itself, like most, if not all, organs, harbors a robust, intrinsic clock (Geyfman et al., 2012; Plikus et al., 2013; Al-Nuaimi et al., 2014). The ontogeny of the circadian clock in skin remains to be studied, but evidence suggests that skin development proceeds entirely normally in mice mutated for core clock genes (Kondratov et al., 2006; Lin et al., 2009; Plikus et al., 2013). Based on work in other organs, it is likely that the circadian clock in skin matures in the early postnatal period (Kovacikova et al., 2006; Sladek et al., 2007; Ansari et al., 2009).

Serving primarily to protect the body against environmental insults, skin is a large and complex organ composed of multiple cell types, organized into layers, and featuring thousands of mini-organ structures, such as hair follicles and sweat glands. Therefore it may be misleading to think of “*the skin clock*” as a single entity analogous to how the clock is often thought of in anatomically and functionally more homogenous organs such as liver, muscle and fat. A more useful model is to consider multiple independent, yet most likely

coordinated, peripheral clocks that function within distinct anatomical compartments of the skin. In part such a framework is more useful because in all likelihood the circadian clock affects the expression of distinct gene sets and physiological functions in the different cell types of skin.

Already more than a decade ago, circadian oscillators were found to be present in several principle skin cell types, including epidermal and hair follicle keratinocytes, dermal fibroblasts, and melanocytes (Zanello et al., 2000; Bjarnason et al., 2001; Kawara et al., 2002; Oishi et al., 2002; Brown et al., 2005). A series of more recent studies taking advantage of genetic mouse models (Lin et al., 2009; Gaddameedhi et al., 2011; Janich et al., 2011; Geyfman et al., 2012; Plikus et al., 2013) and gene knockdowns in human hair follicles *in vitro* (Al-Nuaimi et al., 2014; Hardman et al., 2014) have confirmed the ubiquitous presence of clock in skin, identified specific functional clock outputs, and importantly, demonstrated an impressive degree of compartmentalization of clock across the spatial “landscape” of skin and along the temporal axis of the hair growth cycle. Importantly, circadian regulation of skin functions is likely an ancient evolutionary feature. To further advance the argument for “*multiple skin clocks*”, below we provide a brief overview of the distribution of circadian oscillators in key skin compartments in the context of diverse skin functions.

I.a The interfollicular epidermal clock – working in layers

The interfollicular (i.e. between hair follicles) epidermis is a continuously renewing stratified squamous epithelium (Figure 1) of a vast size, covering a surface of 1.8 m² in an average adult human. Its basal cell compartment contains progenitor/stem cells, whose proliferative activity assures both the physiological maintenance of the epidermis, as well as restoration of its integrity following injury (Figure 2). Progeny of proliferative basal cells exit the cell cycle as they move up into the suprabasal compartment. There, epidermal keratinocytes progressively differentiate as they move towards the skin's surface, ultimately forming the uppermost *stratum corneum*, a tough and highly cross-linked protective lipid/protein composite that contributes to the skin's barrier function (Doupe and Jones, 2013; Lopez-Pajares et al., 2013).

There is a robust circadian clock activity in stem and progenitor cells of the basal epidermal layer. Deletion of core clock genes in the germline, and selectively in keratinocytes, shows that in this epidermal compartment, the clock modulates diurnal cycles of DNA replication and repair (Figure 2A, 2B) (Lin et al., 2009; Gaddameedhi et al., 2011; Geyfman et al., 2012; Janich et al., 2013; Kumar et al., 2013). Thus, the circadian clock intrinsic to keratinocytes appears to be a key control mechanism responsible for the prominent diurnal variation in cell proliferation activity of epidermal progenitor cells, a remarkable phenomenon known since the early part of the 20th century (Fortuyn-Van Leyden, 1916; Bullough, 1948), and demonstrated in vertebrate species beyond mammals, including zebrafish (Idda et al., 2012) and salamander (Chiakulas and Scheving, 1966). The interfollicular epidermal pattern of clock activity and function extends into the upper epithelial compartments of the hair follicle, the infundibulum and the isthmus (Geyfman et al., 2012) (Figure 3A). Unlike the hair follicle bulge, which houses hair-fated stem cells, the

infundibulum and isthmus house stem cells that in terms of their proliferation activity behave more like interfollicular epidermal stem cells (Jensen et al., 2009; Snippert et al., 2010; Geyfman et al., 2012). These cells also routinely contribute to maintenance and repair of the nearby epidermis (reviewed in Plikus et al., 2012).

Functions of the differentiated suprabasal epidermal compartments are also under circadian clock influence. Diurnal variations in several physiological skin parameters that depend on the functional state of the suprabasal epidermal layers, including skin pH, transepidermal water loss and stratum corneum capacitance were first noted almost two decades ago (Reinberg et al., 1996; Yosipovitch et al., 1998; Le Fur et al., 2001; reviewed in Geyfman and Andersen, 2009), and were further validated in recent studies (Flo et al., 2014; Matsunaga et al., 2014). Also, a study on cultured human keratinocytes provided support for clock regulation of the epidermal differentiation program (Janich et al., 2013). Considering that the stratum corneum is composed of dead cells and that proteins delivered to stratum corneum are long lived, the mechanisms underlying daily variations in the above mentioned epidermal parameters are likely driven by the circadian output genes in the live epidermal strata, basal and/or immediate suprabasal layers. To that end, a recent study by Matsunaga et al. (2014) showed that daily cycles in stratum corneum hydration and transepidermal water loss depend on the levels of Aquaporin 3 (Aqp3), a membrane transporter for water and glycerol, and a putative epidermal clock output gene whose expression is under the positive regulation by the CLOCK-regulated transcription factor DBP. Both *Aqp3* expression and stratum corneum hydration are markedly decreased in *Clock*-mutated mice. In line with the notion that circadian variations in suprabasal epidermal functions depend on circadian fluctuations in gene expression and protein activities in the living epidermal layers, *Aqp3* was shown to be prominently expressed in basal keratinocytes (Hara-Chikuma and Verkman, 2008).

I.b The hair follicle clock – clock in the context of stem cell cornucopia

Beneath the epidermis and spanning through dermal and adipose skin layers are the hair follicles, miniature, yet anatomically complex ectodermal appendages (Figure 1). Hair follicles have a radially symmetric, onion-like organization of several concentric layers of epithelial cells sitting above and partially surrounding a cluster of specialized dermal papilla cells (Figure 3) (Paus et al., 1999; Muller-Rover et al., 2001). A prominent feature of hair follicles is the hair growth cycle -- a repetitive cycle in which follicles go through consecutive phases of cell proliferation-driven growth (anagen), apoptosis-mediated involution (catagen) and relative mitotic quiescence (telogen) (Figure 3) (Stenn and Paus, 2001; Schneider et al., 2009). During each such cycle, hair follicles regenerate new hair shafts, the final product of their growth activities. Life-long ability of hair follicles to regenerate hairs is supported by several distinct stem cell populations, most notably by the slow-cycling bulge stem cells (Cotsarelis et al., 1990; Morris et al., 2004; Tumber et al., 2004; Snippert et al., 2010). The mesenchymal dermal papilla primarily acts as a signaling niche, generating critical growth factor signals that induce activation of stem cells and sustain proliferation of their progeny over the course of hair shaft production (Figure 3) (Enshell-Seijffers et al., 2010a; Enshell-Seijffers et al., 2010b; Clavel et al., 2012).

Most mammals, including humans have many thousands, even millions of hair follicles on their body. In many mammalian species, cycling among all body's hair follicles is coordinated with the yearly seasons, allowing the production of two, often dramatically different, types of fur coats to suit the animal's unique needs -- one for summer and one for winter. In humans, hair follicles appear to cycle relatively continuously throughout life, although subtle seasonal hair growth changes have been noted (Randall and Ebling, 1991). In house mice (*Mus musculus*), the most widely used model species for studying hair biology, initial hair follicle morphogenesis completes by the end of week two after birth. This is followed by two relatively synchronized hair growth cycles, after which hair cycles become distinctly asynchronous (Plikus and Chuong, 2008).

Intimately connected with the hair follicles are the sebaceous glands, whose lipid rich secretion provides water repellant and protective coating to hairs and the stratum corneum of the neighboring epidermis (Figure 1). Human skin is also densely populated by sweat glands, which drive perspiration-based thermoregulation (Figure 1). In mice, sweat gland distribution is reduced to just ventral surfaces of their paws, where sweating aids in generating friction.

Over the course of the hair cycle, bulge stem cells periodically give rise to all of the epithelial cell types that constitute the lower portion of the follicle (Morris et al., 2004; Tumar et al., 2004). While cellular dynamics in the epithelial hair lineage are complex, this lineage generally alternates between dormant hair germ progenitors during telogen and their actively dividing progeny, in particular, activated hair germ cells at the beginning of anagen and hair matrix cells during full anagen (Muller-Rover et al., 1999; Greco et al., 2009). Hair follicle compartments that lie below the isthmus, display complex circadian expression patterns and seem to vary in terms of the strength of circadian outputs. During telogen and at the telogen-to-anagen transition, circadian genes are robustly expressed in hair germ progenitors (Lin et al., 2009), contrasting with the patchy expression in the bulge stem cells (Janich et al., 2011; Plikus et al., 2013) (Figure 3C). Once the hair lineage fully expands during anagen, clock (Plikus et al., 2013; Al-Nuaimi et al., 2014) and clock output genes (Lin et al., 2009) become most highly expressed in the epithelial hair matrix cells located at the very base of the hair follicle, known as the hair bulb. At this stage of the hair cycle, clock activity is also prominent in the specialized fibroblasts of the dermal papilla, the mesenchymal structure serving as the key signaling center of hair growth activities (Plikus et al., 2013) (Figure 3E). Interestingly, although all of the core clock genes are expressed in telogen and anagen skin, only about 6% of clock regulated genes overlap between these two phases of the hair growth cycle (Geyfman et al., 2012). This demonstrates that circadian programs are not only tissue specific (Yan et al., 2008), but can also differ in the same tissue in different physiological states, such as phases of hair regeneration. Recent studies by Al-Nuaimi et al. (2014) and Hardman et al. (2014) showed that clock activity in human hair follicles is similar to that of mice and is present in hair matrix, dermal papilla, as well as in other key compartments of anagen hair follicles, namely the outer root sheath and dermal sheath. Robust circadian activity in human hair follicles is maintained *in vitro* in the absence of synchronizing inputs from the CNS. Furthermore, disruption of the follicle autonomous

clock using an siRNA approach leads to prolonged growth of hair follicles in culture and their hyper-pigmentation.

Functionally, it is known that germline deletion of *Bmal1* in mice leads to a delay in the expansion of the secondary hair germ and initiation of anagen (Lin et al., 2009), and *Cry1/Cry2* deletion alters daily mitotic rhythm of hair matrix cells (Plikus et al., 2013). Janich et al. (2011) reported that bulge stem cells are heterogeneous for circadian reporter fluorescence levels, containing distinct populations of reporter-high and reporter-low stem cell types (Figure 3B). Comparative gene expression profiling of both stem cell sub-populations indicates that the reporter-high sub-population is enriched for mediators of WNT and TGF β signaling pathways, whose activity is implicated in stem cell activation (reviewed in Plikus, 2012). Furthermore, the ratio of reporter-high to reporter-low bulge stem cells changes as the hair cycle progresses, with the percentage of reporter-low stem cells decreasing from 50% to just 10% between resting and active phases of the cycle. While intriguing, these results raise questions about the functional correspondence to these findings, as there does not appear to be a defect in bulge stem cell activation in mice with *Bmal1* deleted in keratinocytes (Geyfman et al., 2012). Also, it is unclear whether the reported high and low states represent true differences in clock amplitude, or whether they are caused by the heterogeneity (i.e. temporal shift) in circadian phase. Although *in vitro* data suggest the possibility that there are daily cycles of WNT and TGF β responsiveness (Janich et al., 2011; Janich et al., 2013), this idea remains to be tested in a biologically meaningful manner *in vivo*.

While the idea that the hair growth cycle is governed by a simple “pacemaker mechanism” is attractive (Paus and Foitzik, 2004), the work on the influence of the circadian clock on the hair growth cycle indicates that the circadian clock does not fulfill such a role. Rather, the circadian clock seems to be involved in modulating cell proliferation activity at distinct stages of the hair cycle, and clock gene mutations lead to subtle hair cycle phenotypes. Given the possible role of the circadian clock in regulation of seasonal physiology, it is likely that clock mechanisms have a more prominent role in species exhibiting seasonal control of hair cycles (Bradshaw and Holzapfel, 2010; Dardente et al., 2010; Geyfman and Andersen, 2010). Supporting this hypothesis, in Arctic reindeers, which live in extreme latitude where environmental light cycles are absent during polar summer and winter, skin fibroblasts do not have circadian rhythms (Lu et al., 2010 *Current Biology*). However, further studies on this subject are required.

Lastly, because of their prominent clock and ease of access, hairs provide convenient and non-invasive tissue source for assessing human circadian rhythms (Akashi et al., 2010; Watanabe et al., 2012; Watts et al., 2012). Thus, hair sampling can enable population-level epidemiologic studies of circadian clock disruptions and disease associations. To that end, using plucked scalp hairs Akashi et al. (2010) already demonstrated de-synchrony between clock gene expression and lifestyle in rotating shift workers.

I.c Dermal and adipose clocks – new frontiers for circadian skin biology

The dermis, lying immediately beneath the epidermis, is a fibroblast-rich structure that provides tensile strength to the skin and support to hair follicles through an extensive

collagen network. Skin adipose tissue, a thin, finely structured layer of white adipocytes, lies below the dermis and marks the innermost boundary of the skin (Figure 1). While fibroblasts have been a model cell type of choice for *in vitro* circadian studies for over a decade (Balsalobre et al., 1998), and extensive work has been performed on circadian biology of adipocytes, especially as it relates to endocrine and metabolic function (Guo et al., 2012; Paschos et al., 2012; reviewed in Shostak et al., 2013a; Shostak et al., 2013b), specific inquiries into the role of clock in cutaneous fibroblasts and adipocytes are lacking. What we currently know is that circadian genes are expressed in at least a subset of cells in skin dermis and adipose tissue (Lin et al., 2009; Plikus et al., 2013). Given the critical contribution of the dermal compartment to skin aging (Uitto, 2008), and the emerging role of the adipose layer in regulation of hair follicles (Plikus et al., 2008; Festa et al., 2011), *in vivo* functional inquiry into the dermal and skin adipose clocks is warranted.

I.d Immune, vascular and neuronal clocks – the skin in an organismal context

In addition to characteristic skin cell types, epidermal keratinocytes and dermal fibroblasts, the skin harbors an impressive array of tissue resident and transient immune cell types, constantly “patrolling” for microorganisms and working to counter the development of infections. These immune cells are in part under the control of factors expressed and secreted by epidermal keratinocytes, allowing for concerted epidermal and immune response to injuries and infections (Di Meglio et al., 2011). In contrast to this barrier enhancing function, deregulation of the cutaneous immune system is causally associated with many inflammatory skin diseases, prominently psoriasis (Schon et al., 1997; Nickoloff and Nestle, 2004) and atopic dermatitis (Leung et al., 2004; De Benedetto et al., 2009), emphasizing the importance of balancing the immune response. In principle, the circadian clock could provide means to increase skin immunity during times of highest risk for encountering infections while minimizing the tendency for autoimmunity by suppressing immune response during other times of the day. Although detailed review of the skin's immune system is outside the scope of this review, briefly, within the epidermis, Langerhans cells and different types of T cells are prominent, and within the dermis macrophages, mast cells, T cells and dendritic cells are abundant (Figure 1) (reviewed in Pasparakis et al., 2014). In addition to countering pathogenic organisms, the immune system interacts with the prominent and complex commensal flora of the skin.

The role of the circadian clock in regulating the immune system is an emerging area of research, revealing a prominent clock within immune cells and generally supporting a clock-controlled diurnal variation in their ability to counter infections (Scheiermann et al., 2013). Thus, the circulating leukocyte count peaks during the day in rodents and during the night in humans. Further, circadian variation in the expression of endothelial cell adhesion molecules and tissue chemokines /chemokine receptors mediate time of day dependent recruitment of leukocytes into tissues. In fact, studies in several epithelial organs have demonstrated that the susceptibility to infections is time of day dependent. In the lung, circadian regulation of chemokine CXCL5 within Clara cells mediates diurnal changes in neutrophil recruitment and host response to *S. pneumoniae* infections (Gibbs et al., 2014). Additionally, in the gut, clock controls the immune response to the enteric pathogen *S. Typhimurium* (Bellet et al., 2013).

Several immune function-related genes are found among the set of genes showing circadian regulation in mouse skin, suggesting that the skin's immune system could be under circadian clock influence (Figure 4) (based on Geyfman et al., 2012). Consistent with this idea, studies are now emerging that specifically address how the circadian clock affects the skin immune system. Exploring the cause of diurnal variation in allergic symptoms, Nakamura et al. (2011; 2014) found that the circadian clock intrinsic to mast cells contributed to IgE-mediated degranulation and diurnal variation in cutaneous anaphylactic reactions. The same group also found that the delayed-type skin allergic reactions, thought to model human allergic contact dermatitis, are more severe in mice mutated for *Clock* (Takita et al., 2013). Furthermore, pinealectomy in hamsters, which leads to the loss of nocturnal melatonin signal, abolished circadian changes in the trafficking of antigen-presenting dendritic cells in the skin and impaired cutaneous antigen-specific delayed-type hypersensitivity reactions (Prendergast et al., 2013).

The skin is also highly vascularized and densely innervated (Figure 1), thus providing humoral and neuronal pathways as entry points for the central CNS circadian activities to be imposed on top of autonomous cell type specific circadian functions. Neuronal inputs from CNS also provide essential means for entrainment of peripheral skin clocks to external changes in photoperiods, as skin cells themselves, such as epidermal keratinocytes, are “blind” to external light inputs despite being constantly exposed to it (Tanioka et al., 2009). It is also likely that cells of the skin vasculature and neurons are themselves under circadian control although possible functional consequences of such regulation have not been explored.

I.e The pigment cell system of skin

Melanocytes, specialized pigment-producing cells residing in the skin, confer the pigment patterning of epidermis and hair, and provide protection against UV radiation. Melanocytes synthesize and actively transfer UV-absorbing melanin granules to their neighboring keratinocytes, endowing the latter with natural sunscreen properties. As such, any potential circadian variations in pigment producing function of melanocytes can impact the overall UV sensitivity of the epidermis.

In fish (Hayashi et al., 1993), amphibian (Binkley et al., 1988; Filadelfi et al., 2005) and reptile species (Fan et al., 2014), which mostly lack appendage structures, there is often a prominent circadian rhythm in skin pigmentation. Mechanistically, red abdominal pigmentation in Neon tetra and Cardinal tetra species of fish depends on the activity of skin erythrophores, which changes in circadian fashion as a function of rhythmic nocturnal melatonin production. Melatonin causes aggregation of erythrophores, which in turn leads to fading in red coloration (Hayashi et al., 1993).

In mammals, melanocytes are known to harbor active circadian clock (Zanello et al., 2000; Sandu et al., 2012; Lengyel et al., 2013b), but their circadian biology is just starting to be elucidated. Recent study by Hardman et al. (2014) investigated the role of peripheral circadian clock in regulating hair pigmentation using an *in vitro* model of human hair follicles. siRNA mediated silencing of *BMALI* or *PER1* results in increased hair pigmentation. Mechanistically, this effect is mediated by changes at different levels of

melanocyte function, including increases in Tyrosinase-related protein (TYRP) 1/2 and Tyrosinase expression and activity, as well as melanocyte dendricity. Future studies using melanocyte lineage-specific circadian gene deletions will be needed to define the role of clock in melanocyte biology in mice. Furthermore, it will be intriguing to see if circadian effects, similar to these in hair follicle melanocytes, also occur in human epidermal melanocytes, and if this mechanism can be leveraged for enhanced UV protection.

It should be also noted that unlike in humans, in mammalian species with dense hair coat, such as mice, melanocytes typically do not localize to epidermis and for the most part UV protection is accomplished by the light-shielding property of the fur.

II. Circadian cell cycle control in the epidermis – diverse checkpoint strategies

An intimate molecular relationship between circadian clock pathway and cell cycle signaling machinery has been underscored in multiple studies. One hypothesis is that temporal partitioning of organismal exposure to solar irradiation, DNA repair and DNA synthesis was a major factor shaping evolution of the clock (Rosbash, 2009; Khapre et al., 2010). If true, this ancient clock function -- separating DNA synthesis away from the external genotoxic stress -- remains highly relevant for the mammalian epidermis. Indeed, UVB penetration into the body is largely limited to the interfollicular epidermis (Biniak et al., 2012), where circadian cell cycle gating is prominent (Gaddameedhi et al., 2011; Geyfman et al., 2012). However, in deep tissues, where solar UVB radiation does not penetrate, there appears to be circadian variation in cell proliferation as well (Matsuo et al., 2003; Granda et al., 2005). Also, in humans, evidence suggests that the highest proportion of epidermal progenitors goes through S phase during the day, the time of maximum solar exposure. Therefore, it has been suggested that circadian gating of the cell cycle could be to minimize the overlap between sensitive cell cycle phases and endogenous genotoxic factors, including reactive byproducts of oxidative metabolism (reviewed in Johnson, 2010; Khapre et al., 2010; Masri et al., 2013). Below we will review circadian cell cycle control strategies in various anatomical skin compartments, including epidermis and hair follicles, and under various physiological states, including regeneration, wound healing and aging.

II.a The interfollicular epidermal strategy – raising UV awareness for skin cancer

A prominent daily cycle of epidermal progenitor/stem cell proliferation was first noted almost a century ago (Fortuyn-Van Leyden, 1916; Bullough, 1948). In the nocturnal mouse, the highest proportion of epidermal progenitors are in S-phase during the night, while in diurnal humans the situation is reversed with the highest proportion of keratinocytes in S-phase during the day (Figure 2) (Brown, 1991). Cell cycle kinetic studies suggested that this regulation might be mediated through an effect on S-phase duration (Clausen et al., 1979). More recent studies demonstrated that this diurnal variation depends on an intact circadian clock both systematically and within keratinocytes (Gaddameedhi et al., 2011; Geyfman et al., 2012; Plikus et al., 2013). In the absence of *Bmal1* in keratinocytes the proportion of cells in S-phase is constant and high, indicating that in mice the role of *Bmal1* is to suppress the proportion of cells in S-phase during the day (Geyfman et al., 2012). Superimposed on

this cell cycle regulation is the circadian expression of the nucleotide excision repair factor xeroderma pigmentosum group A (XPA) which is antiphasic with S-phase progression, with lowest level during the night in mice (Gaddameedhi et al., 2011). The antiphasic regulation of S-phase and XPA may relate to the fact that UVB-induced DNA lesions, cyclobutane pyrimidine dimers and the (6-4) photoproducts, and possibly ROS-induced lesions (Maria Berra et al., 2013), are corrected via nucleotide excision repair, a delicate and time-consuming process (Ikehata and Ono, 2011). When activated during S-phase, the latter interferes with DNA replication and requires slowing and stalling of the replicative fork, which in turn enhances the degree of genomic instability and rate of DNA replication errors.

Several molecular mechanisms have been suggested as important for the circadian clock's influence on the cell cycle. Studies on liver regeneration, the first *in vivo* studies to investigate this theme, identified the cell cycle regulator Wee1 and the G2/M checkpoint as the key targets for the circadian clock (Matsuo et al., 2003). In fact, Wee1 is highly circadian in mouse skin (Lin et al., 2009; Geyfman et al., 2012). Other studies, mostly based on *in vitro* experiments, have identified several other G1/S cell cycle regulators as targets of the clock. These include NONO, which controls the expression of cell cycle inhibitor p16-INK4a, p21, cyclin D1 and Myc (Khapre et al., 2010; Maier and Kramer, 2013). Another recent study identified KLF9 as the circadian transcription factor that controls cell proliferation in human epidermis (Sporl et al., 2012). Functional experiments in mice will be needed to determine if the clock targets the aforementioned cell cycle mechanisms to influence daily variations in epidermal cell proliferation.

Ultraviolet radiation from the sun is the major carcinogen for skin, both for melanoma and the more common non-melanoma cancers. In this respect, recent studies showed that the mouse epidermis is more sensitive to UVB-induced DNA damage at night (Gaddameedhi et al., 2011; Geyfman et al., 2012) and that this translates into more skin carcinogenesis when UVB is applied at night than during the day (Gaddameedhi et al., 2011). These diurnal differences are obliterated when core clock genes *Bmal1* and *Cry1/Cry2* are mutated indicating that this variation in sensitivity is controlled by the circadian clock. The underlying mechanisms maybe the aforementioned clock-controlled variability in DNA repair which is less efficient at night, or the increased proportion of epidermal stem cells in S-phase during the night. As human epidermis shows the opposite diurnal pattern in cell proliferation, and possibly DNA repair, this clock-controlled mechanism may contribute to the high incidence of skin carcinogenesis in humans; our skin is expected to be especially sensitive to UVB-induced DNA damage during times of maximum sun exposure. In fact, people living in UVB rich regions of the planet developed constitutively dark pigmentation required to protect their epidermis from DNA damaging radiation (Jablonski and Chaplin, 2010). The skin therefore is an outstanding model to understand how the clock affects our response to environmental carcinogens, a topic of major importance in cancer biology as most forms of common human cancers are caused by environmental effects.

II.b The hair follicle strategy – when speed matters

Compared to progenitors/stem cells in the basal epidermis, hair matrix cells proliferate more rapidly to assure fast and uninterrupted hair shaft growth. Unlike epidermis, hair matrix does

not show identifiable DNA replication rhythm. Instead, it shows daily mitotic rhythm, which appears to depend on circadian gating of the G2/M cell cycle checkpoint (Plikus et al., 2013) (Figure 3E) -- mechanisms similar to that in regenerating liver (Matsuo et al., 2003). Because mitotic cells are more vulnerable to double stranded DNA breaks compared to G1- or S-phase cells, growing mouse hair follicles are more sensitive to genotoxic stress, and display more severe hair loss following exposure to the same dose of γ -radiation in the morning, during the mitotic peak, than in the mid-afternoon, during the mitotic decline. This diurnal effect disappeared in arrhythmic *Cry1/Cry2* null mice, which experience significant hair loss irrespective of the time of day. It is unclear why in hair matrix circadian clock preferentially times mitosis, rather than DNA replication phase. One possibility, that remains to be tested, is that such gating strategy achieves a compromise between maintaining high speed of hair growth and protecting the most vulnerable subset of cells, mitotic cells, against diurnal fluctuations in genotoxic stress factors.

II.c Skin aging and scarring – leveraging the senescence pathway

Gradual decline in cell proliferation and physiological tissue repair, as well as a rise in cellular senescence, are prominent features of tissue aging. In addition to a role in modulating cell cycle progression, the clock has been implicated in regulation of cellular senescence pathways. Senescence describes a permanent and often irreversible replicative block initiated by a variety of genomic stress stimuli and mediated by a handful of signaling mechanisms, most prominently p53-p21 and p16^{Ink4a}-pRb pathways (reviewed in Campisi, 2013; van Deursen, 2014).

Normally, skin undergoes a high cellular renewal rate, and therefore it provides a sensitive model system for studying defects in physiological tissues renewal. Hair graying, hair loss, decrease in the cutaneous fat layer, as well as a delay in skin wound healing can all be used as sensitive readouts for skin aging. In this respect, *Bmal1* deficient mice that develop premature aging in multiple tissues and have decreased lifespan, also show several signs of premature skin aging, including delayed hair regrowth, thinning of the cutaneous fat layer (Kondratov et al., 2006; Lin et al., 2009), and significant deficiency of wound closure (Kowalska et al., 2013). Normally, *Bmal1* appears to counteract tissue senescence by negatively regulating mammalian Target of Rapamycin Complex 1 (mTORC1) (Khapre et al., 2014), known for its ability to promote accumulation of reactive oxygen species and induction of replicative senescence (Iglesias-Bartolome et al., 2012).

While the role of senescence in age-dependent proliferative decline is not surprising, its role in normal tissue regeneration is somewhat counterintuitive. However, recent studies suggest that programmed activation of senescence in wound myofibroblasts is, in fact, an integral part of skin injury repair response (Jun and Lau, 2010; Kowalska et al., 2013). Following wounding, skin integrity is restored via robust proliferation of myofibroblasts and formation of the so-called granulation tissue – the early form of the scar. Importantly, after the initial proliferative burst, myofibroblasts enter replicative senescence - the process initiated by CCN1 adhesive protein signaling and executed via activation of both p53-p21 and p16^{Ink4a}-pRb senescence pathways (Jun and Lau, 2010). Myofibroblasts' senescence is thought to aid proper skin wound healing in two complimentary ways: (i) a replicative block puts breaks

on cell over-proliferation, and (ii) activation of the so-called senescence-associated secretory phenotype (SASP), characterized by multiple immune-modulating cytokines and matrix metalloproteinases, helps to drive granulation tissue remodeling into a mature and functional scar tissue and dampen excessive fibrosis. Importantly, recent study implicated NONO, a multifunctional nuclear factor and a binding partner of Per proteins, in timing the replicative senescence of wound myofibroblasts (Kowalska et al., 2013; Maier and Kramer, 2013). Replicative block in myofibroblasts following Ccn1 signaling (Jun and Lau, 2010), requires activation of the p16^{Ink4a} cell cycle inhibitor. NONO, whose daily cycle in the nucleus appears to depend on a Per2 rhythm, drives rhythmic transcription of p16^{Ink4a} and under normal conditions facilitates replicative senescence onset. Kowalska et al. (2013) showed that rhythmic activation of p16^{Ink4a} in *NONO* and *Per1/2* double mutant mice becomes disrupted, and mutant wound scars displayed myofibroblasts over-proliferation. However, considering that skin wound healing is a highly complex process involving concerted activity of multiple cell types, future tissue-specific circadian gene deletion studies will be necessary to fully dissect the complex wound healing phenotype displayed by *NONO*, *Per1/2* and *Bmal1* mutant mice (Figure 2C).

III. Unresolved questions and opportunities in circadian clock skin research

Research into the circadian clock in skin is a relatively new and under-explored field. Therefore, many important questions remain unresolved about how the circadian clock is regulated within skin and which skin functions are modulated by the clock. In addition, work into the skin's circadian clock provides several unique opportunities that will likely impact how we think of the role of the circadian clock more generally. For example, work on peripheral clocks has been dominated by studies in organs such as the liver whose primary function is to regulate diurnal changes in organismal metabolism. In contrast, the skin features stem cell-generated epithelia required for barrier formation and tissue repair, making it a useful model to study the role of the clock in adult stem cells and regeneration, clock functions we know little about.

III.a Regulation of the clock in skin

It is known that various skin compartments contain an intrinsic clock and that overall activity of the clock depends on the central suprachiasmatic pacemaker (Tanioka et al., 2009). Although neurohumoral mechanisms are generally assumed, it remains unknown how the central clock communicates with the skin. For example, it is possible that the link to the clock in different skin compartments could vary; some skin compartments are in close proximity to nerve endings while others are not. In addition, the phase of peripheral clocks can be modulated by different mechanisms such as physical activity and time of food intake (Matsuo et al., 2003; Granda et al., 2005), and whether this is the case in the skin remains unknown. This is an exciting area of research because it may reveal unexpected regulation of skin biology such as through sleep deprivation, food intake and metabolism in general. In this respect, it is increasingly recognized that the skin disease psoriasis is linked to obesity, metabolic syndrome and cardiovascular disease (Armstrong et al., 2013; Jensen et al., 2013), conditions where circadian disruption may contribute to the pathogenesis (Buxton et al., 2012; Shi et al., 2013). Also, as the skin clock is involved in the response to UV exposure

and injury, it remains to be investigated whether these insults in turn regulate the skin clock. Furthermore, an intriguing possibility remains to be tested that at least some circadian skin functions can impact molecular clock works in other organs, perhaps through immune or endocrine mechanisms.

III.b The role of the clock in adult stem cells

Skin, and hair follicles in particular, are recognized for their well-defined and experimentally tractable populations of stem cells (Plikus et al., 2012; Hsu et al., 2014; Rompolas and Greco, 2014). Already today, stem cell-specific circadian knockouts (such as *Bmal1* knockouts) are possible with the help of well-characterized *Cre* lines. Undoubtedly, such future studies will advance our understanding of circadian heterogeneity in stem cell populations, and explain the extent to which clock impacts stem cell quiescence and activation (Janich et al., 2011; Janich et al., 2013). While challenging due to the complex nature of skin, the well-defined stem cell populations are likely to contribute to our understanding on the role of the circadian clock in stem cells. For such studies the field will have to increasingly adapt *in situ* single cell analysis methods (Abe et al., 2013; Rompolas et al., 2013; Blacker et al., 2014). The role of the clock in regulating diurnal changes in progenitor cell proliferation has been shown (Gaddameedhi et al., 2011; Geyfman et al., 2012; Plikus et al., 2013), but the biologically relevant control mechanisms for this regulation remain unknown. The interfollicular epidermis and hair follicle provides an opportunity to investigate the physiologically relevant mechanisms *in vivo*.

Given the role of the clock in cell cycle control, the skin epithelial lineage provides an advantage, as within this lineage, cells can be quiescent (bulge stem cells), relatively proliferative (interfollicular progenitor/stem cells), and highly proliferative (secondary hair germ and matrix). While *in vitro* studies have provided many candidate mechanisms for clock control of cell proliferation, it is likely that a more complete understanding of how the clock interacts physiologically with cell proliferation can be derived from studies on the epidermal lineage *in vivo*.

Another area of future inquiries relates to the role of clock in the stem cell niche. Hair follicles feature a prominent niche cell population, the dermal papilla, and several recently reported dermal papilla-specific *Cre* lines allow for niche-specific circadian loss-of-function studies (Clavel et al., 2012; Ramos et al., 2013; Morgan, 2014). *Bmal1* knockdown studies in dermal papilla cells *in vitro* already suggest that several hair growth related genes can be under the circadian control (Watabe et al., 2013). In this respect it is of note that while germline *Bmal1* knockout affects anagen initiation (Lin et al., 2009), such an effect is not observed when *Bmal1* is deleted from keratinocytes (Geyfman et al., 2012), suggesting the possibility of important regulation within non-keratinocyte populations. Thus, the skin is a highly suitable organ to test whether the clock is involved in coordination between the stem cells and their niche. Recent advances in human hair follicle culture and siRNA-based gene knockdown protocols enable studies into circadian regulation of diverse biological functions, such as regeneration and pigmentation, under organotypic conditions in a translationally-relevant context (Al-Nuaimi et al., 2014; Hardman et al., 2014).

Skin, with its robust and extensively studied wound healing abilities, provides an ideal model system for examining circadian regulation of tissue repair after injury. While complex and involving many systems, the immune system in particular, effective wound healing depends on proper stem cell regulation. Wound healing defects were already noted in several circadian mutants, *NONO*, *Per1/2* and *Bmal1* null mice (Kowalska et al., 2013). Given the complexity of cellular dynamics upon wound repair, studying epidermal-, dermal- and immune-specific circadian knockouts will be crucial for attributing circadian wound healing phenotypes to a particular cell type(s) and function(s).

The skin is also an especially attractive model for aging research; mice deleted for *Bmal1* exhibit accelerated skin aging (Kondratov et al., 2006). One model for aging proposes stem cell exhaustion and dysfunction as the underlying mechanism (Nishimura et al., 2005; Inomata et al., 2009), which could be affected by the circadian clock (Lin et al., 2009; Janich et al., 2011; Geyfman et al., 2012; Plikus et al., 2013; Al-Nuaimi et al., 2014). There is already strong evidence that epidermal stem cells are the initiating cells in skin carcinogenesis (Lapouge et al., 2011; White et al., 2014), suggesting that beyond the diurnal changes in susceptibility to UV-induced DNA damage and skin cancer formation (Gaddameedhi et al., 2011; Geyfman et al., 2012), epidermal stem cells might be a useful model to study the role of the circadian clock in endogenous mutation formation that is thought to contribute to carcinogenesis more generally.

III.c The circadian clock and the role of metabolism in epithelia

Among the clock-controlled processes, metabolism, by far, is the most recognized and well studied (reviewed in Bass, 2012; Sahar and Sassone-Corsi, 2012). Most of our knowledge about the role of the clock in metabolism comes from tissues such as liver and skeletal muscle that are involved in large-scale organismal adjustment of metabolism. We know much less about how the clock affects metabolism in “non-metabolic” organs such as the skin. In this respect it is of interest that among the genes showing circadian variation in telogen skin, metabolic genes are among the most highly enriched (Geyfman et al., 2012). Clearly, stem cell and regenerative functions of skin depend on appropriate metabolic regulation. Whether the circadian clock affects such functions in skin is an exciting area of research. In this case, the easy accessibility of skin for advanced imaging makes skin a unique model system for real-time *in vivo* measurements of circadian metabolic outputs.

Related to the issue of circadian metabolic control is the evolutionary question of what causes diurnal changes in progenitor/stem cell proliferation as observed in epithelia such as the epidermis and the gut (Neal and Potten, 1981). As discussed previously, it is difficult to argue that the underlying evolutionary pressure is protection against UV exposure since diurnal cell proliferation changes are observed in internal organs and in humans the epidermis has highest proportion of cells in S-phase during the day, the period of maximum UV exposure. One possibility is that this phenomenon evolved to temporally separate oxidative metabolism, which generates DNA-damaging oxygen radicals, from the most vulnerable cell cycle stages as suggested for metabolic cycles in yeast (Klevecz et al., 2004; Klevecz and Li, 2007). The epidermis provides a highly suitable model to investigate this

interesting clock-related phenomenon and the biological consequences of de-regulating the diurnal change in cell proliferation.

III.d Circadian modulation of immune skin function and microbiota

Immune dysfunction is at the cornerstone of many common skin diseases, prominently psoriasis, atopic dermatitis, pemphigus, pemphigoid, alopecia areata and vitiligo. Several recent studies indicate that immune cell release from hematopoietic organs, their homing to peripheral tissues, as well as inflammatory cytokine production, are all under the cyclic circadian control (reviewed in Arjona et al., 2012; Scheiermann et al., 2013). Furthermore, in tissues beyond skin, prominent diurnal changes in pathogen sensitivity (Silver et al., 2012) and autoimmune disease presentation (Cutolo, 2012) have already been noted. Working night shifts confers an increased risk of psoriasis based on large epidemiological studies (Li et al., 2013), suggesting the possibility that circadian disruption could contribute to psoriasis development, possibly through an effect on the immune system. Furthermore, an experimental study in BALB/cJ mice with active psoriasis-like inflammation demonstrated increased levels of pro-inflammatory cytokines in response to paradoxical sleep deprivation (Hirotsu et al., 2012), suggesting that sleep deprivation and circadian disruption, a common consequence of the disease's bothersome symptoms, could also contribute to the maintenance of psoriasis inflammation. These initial studies in psoriasis, combined with strong data on the general role of the circadian clock in immune modulation, should stimulate further work on the role of the clock in the pathogenesis of autoimmune and other inflammatory skin diseases. The availability of mouse models for circadian clock and skin inflammation allows the exploration of the underlying mechanisms; such work may ultimately turn into preventative and therapeutically useful insights.

Intimately linked with skin immunity, autoimmune disorders and infection, is the highly prominent commensal skin microbiome (Kong et al., 2012; Chehoud et al., 2013; Sanford and Gallo, 2013; Srinivas et al., 2013). Recent studies into the relationship between the clock and the gut microbiota (Bellet et al., 2013; Henaoui-Mejia et al., 2013; Mukherji et al., 2013), suggest that the skin may be fertile ground to investigate whether the circadian clock may confer diurnal microbiome changes in skin and/or coordinate activities of the skin immune system with the microbiome.

III.e The effect of circadian disruption on skin in health and disease

Irregular work schedules, frequent travel and light pollution, prominent features of modern society, cause disruption of circadian rhythms. Epidemiological and experimental studies provide evidence for the role of circadian disruption in many diseases, especially metabolic and cardiovascular diseases and cancer (Sigurdardottir et al., 2012; Armstrong et al., 2013; Jensen et al., 2013; Lengyel et al., 2013a; Relogio et al., 2014). The aforementioned epidemiological study by Li et al. (2013) into the association of shift work with risk of psoriasis, suggests the possibility that lifestyle changes and circadian disruption, not normally associated with skin health, could be more important for skin diseases than previously recognized.

So far, genetic studies have not conclusively identified circadian clock genes as being important in the pathogenesis of skin diseases. However, comprehensive evaluation of circadian clock gene expression changes, including epigenetic changes, in the context of various skin diseases have not been performed. Given the established role of the clock in modulating cell proliferation, cellular senescence, epidermal barrier function and immune regulation, this might be a fruitful area of translational skin research. In fact, a recent study showed that HRAS-transformed metastatic malignant keratinocytes have lower circadian amplitude, significantly longer period and significantly delayed phase compared to non-transformed human keratinocytes (Religio et al., 2014).

Chronotherapy is another promising area of research that remains underexplored in skin diseases. The goal of chronotherapy is to coordinate drug administration with circadian rhythms such that the therapeutic effect is maximized while side effects are minimized. In line with this idea, various metabolism genes, including drug-metabolizing enzymes, show prominent circadian variation in the skin (Geyfman et al., 2012). While highly speculative at this stage, drugs could be administered when their targets are expressed at the highest level and/or when pathways that metabolize them are at nadir. The principle behind this idea has been demonstrated in mice where hair loss after radiation therapy is time-of-day dependent (Plikus et al., 2013). Another promising direction for skin chronotherapy relates to improving transdermal delivery of topical drugs. Indeed, the study by Matsunaga et al. (2014) that identified diurnal rhythm in the expression of epidermal water transporter Aqp3, suggests that daily variations in epidermal barrier functions can be exploited for improving transcutaneous absorption of topically applied drugs.

Acknowledgements

MVP is supported by the NIH National Institute of Arthritis and Musculoskeletal and Skin Diseases (NIAMS) grant R01-AR067273 and Edward Mallinckrodt Jr. Foundation grant, ENV5 is supported by an NSF Graduate Research Fellowship DGE-1321846, BA is supported by R01-AR056439 from the NIH.

References

- Abe T, Sakaue-Sawano A, Kiyonari H, Shioi G, Inoue K, Horiuchi T, Nakao K, Miyawaki A, Aizawa S, Fujimori T. Visualization of cell cycle in mouse embryos with Fucci2 reporter directed by Rosa26 promoter. *Development*. 2013; 140:237–246. [PubMed: 23175634]
- Akashi M, Soma H, Yamamoto T, Tsugitomi A, Yamashita S, Yamamoto T, Nishida E, Yasuda A, Liao JK, Node K. Noninvasive method for assessing the human circadian clock using hair follicle cells. *Proceedings of the National Academy of Sciences of the United States of America*. 2010; 107:15643–15648. [PubMed: 20798039]
- Al-Nuaimi Y, Hardman JA, Biro T, Haslam IS, Philpott MP, Toth BI, Farjo N, Farjo B, Baier G, Watson RE, Grimaldi B, Kloepper JE, Paus R. A meeting of two chronobiological systems: circadian proteins Period1 and BMAL1 modulate the human hair cycle clock. *The Journal of investigative dermatology*. 2014; 134:610–619. [PubMed: 24005054]
- Ansari N, Agathagelidis M, Lee C, Korf HW, von Gall C. Differential maturation of circadian rhythms in clock gene proteins in the suprachiasmatic nucleus and the pars tuberalis during mouse ontogeny. *The European journal of neuroscience*. 2009; 29:477–489. [PubMed: 19222558]
- Arjona A, Silver AC, Walker WE, Fikrig E. Immunity's fourth dimension: approaching the circadian-immune connection. *Trends in immunology*. 2012; 33:607–612. [PubMed: 23000010]

- Armstrong AW, Harskamp CT, Armstrong EJ. Psoriasis and metabolic syndrome: a systematic review and meta-analysis of observational studies. *Journal of the American Academy of Dermatology*. 2013; 68:654–662. [PubMed: 23360868]
- Balsalobre A, Damiola F, Schibler U. A serum shock induces circadian gene expression in mammalian tissue culture cells. *Cell*. 1998; 93:929–937. [PubMed: 9635423]
- Bass J. Circadian topology of metabolism. *Nature*. 2012; 491:348–356. [PubMed: 23151577]
- Bellet MM, Deriu E, Liu JZ, Grimaldi B, Blaschitz C, Zeller M, Edwards RA, Sahar S, Dandekar S, Baldi P, George MD, Raffatellu M, Sassone-Corsi P. Circadian clock regulates the host response to Salmonella. *Proceedings of the National Academy of Sciences of the United States of America*. 2013; 110:9897–9902. [PubMed: 23716692]
- Biniek K, Levi K, Dauskardt RH. Solar UV radiation reduces the barrier function of human skin. *Proceedings of the National Academy of Sciences of the United States of America*. 2012; 109:17111–17116. [PubMed: 23027968]
- Binkley S, Mosher K, Rubin F, White B. Xenopus tadpole melanophores are controlled by dark and light and melatonin without influence of time of day. *Journal of pineal research*. 1988; 5:87–97. [PubMed: 3367263]
- Bjarnason GA, Jordan RC, Wood PA, Li Q, Lincoln DW, Sothorn RB, Hrushesky WJ, Ben-David Y. Circadian expression of clock genes in human oral mucosa and skin: association with specific cell-cycle phases. *The American journal of pathology*. 2001; 158:1793–1801. [PubMed: 11337377]
- Blacker TS, Mann ZF, Gale JE, Ziegler M, Bain AJ, Szabadkai G, Duchon MR. Separating NADH and NADPH fluorescence in live cells and tissues using FLIM. *Nature communications*. 2014; 5:3936.
- Bradshaw WE, Holzapfel CM. Light, time, and the physiology of biotic response to rapid climate change in animals. *Annual review of physiology*. 2010; 72:147–166.
- Brown SA, Fleury-Olela F, Nagoshi E, Hauser C, Juge C, Meier CA, Chicheportiche R, Dayer JM, Albrecht U, Schibler U. The period length of fibroblast circadian gene expression varies widely among human individuals. *PLoS biology*. 2005; 3:e338. [PubMed: 16167846]
- Brown WR. A review and mathematical analysis of circadian rhythms in cell proliferation in mouse, rat, and human epidermis. *The Journal of investigative dermatology*. 1991; 97:273–280. [PubMed: 1830075]
- Bullough WS. Mitotic activity in the adult male mouse, *Mus. musculus* L. The diurnal cycles and their relation to waking and sleeping. *Proc R Soc London. B Biol Sci*. 1948; 135:212–233.
- Buxton OM, Cain SW, O'Connor SP, Porter JH, Duffy JF, Wang W, Czeisler CA, Shea SA. Adverse metabolic consequences in humans of prolonged sleep restriction combined with circadian disruption. *Science translational medicine*. 2012; 4:129ra143.
- Campisi J. Aging, cellular senescence, and cancer. *Annual review of physiology*. 2013; 75:685–705.
- Chehoud C, Rafail S, Tyldsley AS, Seykora JT, Lambris JD, Grice EA. Complement modulates the cutaneous microbiome and inflammatory milieu. *Proceedings of the National Academy of Sciences of the United States of America*. 2013; 110:15061–15066. [PubMed: 23980152]
- Chiakulas JJ, Scheving LE. Circadian phase relationships of 3H-thymidine uptake, numbers of labeled nuclei, grain counts and cell division rate in larval urodele epidermis. *Experimental cell research*. 1966; 44:256–262. [PubMed: 5964750]
- Clausen OP, Thorud E, Bjerknes R, Elgjo K. Circadian rhythms in mouse epidermal basal cell proliferation. Variations in compartment size, flux and phase duration. *Cell and tissue kinetics*. 1979; 12:319–337. [PubMed: 476779]
- Clavel C, Grisanti L, Zemla R, Rezza A, Barros R, Sennett R, Mazloom AR, Chung CY, Cai X, Cai CL, Pevny L, Nicolis S, Ma'ayan A, Rendl M. Sox2 in the dermal papilla niche controls hair growth by fine-tuning BMP signaling in differentiating hair shaft progenitors. *Developmental cell*. 2012; 23:981–994. [PubMed: 23153495]
- Cotsarelis G, Sun TT, Lavker RM. Label-retaining cells reside in the bulge area of pilosebaceous unit: implications for follicular stem cells, hair cycle, and skin carcinogenesis. *Cell*. 1990; 61:1329–1337. [PubMed: 2364430]
- Cutolo M. Chronobiology and the treatment of rheumatoid arthritis. *Current opinion in rheumatology*. 2012; 24:312–318. [PubMed: 22410544]

- Dardente H, Wyse CA, Birnie MJ, Dupre SM, Loudon AS, Lincoln GA, Hazlerigg DG. A molecular switch for photoperiod responsiveness in mammals. *Curr Biol*. 2010; 20:2193–2198. [PubMed: 21129971]
- De Benedetto A, Agnihothri R, McGirt LY, Bankova LG, Beck LA. Atopic dermatitis: a disease caused by innate immune defects? *The Journal of investigative dermatology*. 2009; 129:14–30. [PubMed: 19078985]
- Di Meglio P, Perera GK, Nestle FO. The multitasking organ: recent insights into skin immune function. *Immunity*. 2011; 35:857–869. [PubMed: 22195743]
- Doupe DP, Jones PH. Cycling progenitors maintain epithelia while diverse cell types contribute to repair. *BioEssays : news and reviews in molecular, cellular and developmental biology*. 2013; 35:443–451.
- Enshell-Seijffers D, Lindon C, Kashiwagi M, Morgan BA. beta-catenin activity in the dermal papilla regulates morphogenesis and regeneration of hair. *Developmental cell*. 2010a; 18:633–642. [PubMed: 20412777]
- Enshell-Seijffers D, Lindon C, Wu E, Taketo MM, Morgan BA. Beta-catenin activity in the dermal papilla of the hair follicle regulates pigment-type switching. *Proceedings of the National Academy of Sciences of the United States of America*. 2010b; 107:21564–21569. [PubMed: 21098273]
- Fan M, Stuart-Fox D, Cadena V. Cyclic Colour Change in the Bearded Dragon *Pogona vitticeps* under Different Photoperiods. *PloS one*. 2014; 9:e111504. [PubMed: 25354192]
- Festa E, Fretz J, Berry R, Schmidt B, Rodeheffer M, Horowitz M, Horsley V. Adipocyte lineage cells contribute to the skin stem cell niche to drive hair cycling. *Cell*. 2011; 146:761–771. [PubMed: 21884937]
- Filadelfi AM, Vieira A, Louzada FM. Circadian rhythm of physiological color change in the amphibian *Bufo ictericus* under different photoperiods. *Comparative biochemistry and physiology Part A, Molecular & integrative physiology*. 2005; 142:370–375.
- Flo A, Diez-Noguera A, Calpena AC, Cambras T. Circadian rhythms on skin function of hairless rats: light and thermic influences. *Experimental dermatology*. 2014; 23:214–216. [PubMed: 24499392]
- Fortuyn-Van Leyden DM. Some observations on periodic nuclear division in the cat. *Proc Soc of Sciences, Amsterdam*. 1916; 19:38.
- Gaddameedhi S, Selby CP, Kaufmann WK, Smart RC, Sancar A. Control of skin cancer by the circadian rhythm. *Proceedings of the National Academy of Sciences of the United States of America*. 2011; 108:18790–18795. [PubMed: 22025708]
- Geyfman M, Andersen B. How the skin can tell time. *The Journal of investigative dermatology*. 2009; 129:1063–1066. [PubMed: 19369933]
- Geyfman M, Andersen B. Clock genes, hair growth and aging. *Aging*. 2010; 2:122–128. [PubMed: 20375466]
- Geyfman M, Kumar V, Liu Q, Ruiz R, Gordon W, Espitia F, Cam E, Millar SE, Smyth P, Ihler A, Takahashi JS, Andersen B. Brain and muscle Arnt-like protein-1 (BMAL1) controls circadian cell proliferation and susceptibility to UVB-induced DNA damage in the epidermis. *Proceedings of the National Academy of Sciences of the United States of America*. 2012; 109:11758–11763. [PubMed: 22753467]
- Gibbs J, Ince L, Matthews L, Mei J, Bell T, Yang N, Saer B, Begley N, Poolman T, Pariollaud M, Farrow S, DeMayo F, Hussell T, Worthen GS, Ray D, Loudon A. An epithelial circadian clock controls pulmonary inflammation and glucocorticoid action. *Nature medicine*. 2014; 20:919–926.
- Granda TG, Liu XH, Smaaland R, Cermakian N, Filipski E, Sassone-Corsi P, Levi F. Circadian regulation of cell cycle and apoptosis proteins in mouse bone marrow and tumor. *FASEB journal : official publication of the Federation of American Societies for Experimental Biology*. 2005; 19:304–306. [PubMed: 15545298]
- Greco V, Chen T, Rendl M, Schober M, Pasolli HA, Stokes N, Dela Cruz-Racelis J, Fuchs E. A two-step mechanism for stem cell activation during hair regeneration. *Cell stem cell*. 2009; 4:155–169. [PubMed: 19200804]
- Guo B, Chatterjee S, Li L, Kim JM, Lee J, Yechoor VK, Minze LJ, Hsueh W, Ma K. The clock gene, brain and muscle Arnt-like 1, regulates adipogenesis via Wnt signaling pathway. *FASEB journal :*

- official publication of the Federation of American Societies for Experimental Biology. 2012; 26:3453–3463. [PubMed: 22611086]
- Hara-Chikuma M, Verkman AS. Roles of aquaporin-3 in the epidermis. *The Journal of investigative dermatology*. 2008; 128:2145–2151. [PubMed: 18548108]
- Hardman JA, Tobin DJ, Haslam IS, Farjo N, Farjo B, Al-Nuaimi Y, Grimaldi B, Paus R. The Peripheral Clock Regulates Human Pigmentation. *The Journal of investigative dermatology*. 2014
- Hayashi H, Sugimoto M, Oshima N, Fujii R. Circadian motile activity of erythrophores in the red abdominal skin of tetra fishes and its possible significance in chromatic adaptation. *Pigment cell research / sponsored by the European Society for Pigment Cell Research and the International Pigment Cell Society*. 1993; 6:29–36.
- Henaó-Mejía J, Strowig T, Flavell RA. Microbiota keep the intestinal clock ticking. *Cell*. 2013; 153:741–743. [PubMed: 23663774]
- Hirotsu C, Rydlewski M, Araujo MS, Tufik S, Andersen ML. Sleep loss and cytokines levels in an experimental model of psoriasis. *PloS one*. 2012; 7:e51183. [PubMed: 23226485]
- Hsu YC, Li L, Fuchs E. Emerging interactions between skin stem cells and their niches. *Nature medicine*. 2014; 20:847–856.
- Idda ML, Kage E, Lopez-Olmeda JF, Mracek P, Foulkes NS, Vallone D. Circadian timing of injury-induced cell proliferation in zebrafish. *PloS one*. 2012; 7:e34203. [PubMed: 22479565]
- Iglesias-Bartolome R, Patel V, Cotrim A, Leelahavanichkul K, Molinolo AA, Mitchell JB, Gutkind JS. mTOR inhibition prevents epithelial stem cell senescence and protects from radiation-induced mucositis. *Cell stem cell*. 2012; 11:401–414. [PubMed: 22958932]
- Ikehata H, Ono T. The mechanisms of UV mutagenesis. *Journal of radiation research*. 2011; 52:115–125. [PubMed: 21436607]
- Inomata K, Aoto T, Binh NT, Okamoto N, Tanimura S, Wakayama T, Iseki S, Hara E, Masunaga T, Shimizu H, Nishimura EK. Genotoxic stress abrogates renewal of melanocyte stem cells by triggering their differentiation. *Cell*. 2009; 137:1088–1099. [PubMed: 19524511]
- Jablonski NG, Chaplin G. Colloquium paper: human skin pigmentation as an adaptation to UV radiation. *Proceedings of the National Academy of Sciences of the United States of America*. 2010; 107(Suppl 2):8962–8968. [PubMed: 20445093]
- Janich P, Pascual G, Merlos-Suarez A, Batlle E, Ripperger J, Albrecht U, Cheng HY, Obrietan K, Di Croce L, Benitah SA. The circadian molecular clock creates epidermal stem cell heterogeneity. *Nature*. 2011; 480:209–214. [PubMed: 22080954]
- Janich P, Toufighi K, Solanas G, Luis NM, Minkwitz S, Serrano L, Lehner B, Benitah SA. Human epidermal stem cell function is regulated by circadian oscillations. *Cell stem cell*. 2013; 13:745–753. [PubMed: 24120744]
- Jensen KB, Collins CA, Nascimento E, Tan DW, Frye M, Itami S, Watt FM. Lrig1 expression defines a distinct multipotent stem cell population in mammalian epidermis. *Cell stem cell*. 2009; 4:427–439. [PubMed: 19427292]
- Jensen P, Zachariae C, Christensen R, Geiker NR, Schaadt BK, Stender S, Hansen PR, Astrup A, Skov L. Effect of weight loss on the severity of psoriasis: a randomized clinical study. *JAMA dermatology*. 2013; 149:795–801. [PubMed: 23752669]
- Johnson CH. Circadian clocks and cell division: what's the pacemaker? *Cell cycle*. 2010; 9:3864–3873. [PubMed: 20890114]
- Jun JI, Lau LF. The matricellular protein CCN1 induces fibroblast senescence and restricts fibrosis in cutaneous wound healing. *Nature cell biology*. 2010; 12:676–685.
- Kawara S, Mydlarski R, Mamelak AJ, Freed I, Wang B, Watanabe H, Shivji G, Tavadia SK, Suzuki H, Bjarnason GA, Jordan RC, Sauder DN. Low-dose ultraviolet B rays alter the mRNA expression of the circadian clock genes in cultured human keratinocytes. *The Journal of investigative dermatology*. 2002; 119:1220–1223. [PubMed: 12485420]
- Khapre RV, Kondratova AA, Patel S, Dubrovsky Y, Wrobel M, Antoch MP, Kondratov RV. BMAL1-dependent regulation of the mTOR signaling pathway delays aging. *Aging*. 2014; 6:48–57. [PubMed: 24481314]

- Khapre RV, Samsa WE, Kondratov RV. Circadian regulation of cell cycle: Molecular connections between aging and the circadian clock. *Annals of medicine*. 2010; 42:404–415. [PubMed: 20568980]
- Klevecz RR, Bolen J, Forrest G, Murray DB. A genomewide oscillation in transcription gates DNA replication and cell cycle. *Proceedings of the National Academy of Sciences of the United States of America*. 2004; 101:1200–1205. [PubMed: 14734811]
- Klevecz RR, Li CM. Evolution of the clock from yeast to man by period-doubling folds in the cellular oscillator. *Cold Spring Harbor symposia on quantitative biology*. 2007; 72:421–429.
- Kondratov RV, Kondratova AA, Gorbacheva VY, Vykhovanets OV, Antoch MP. Early aging and age-related pathologies in mice deficient in BMAL1, the core component of the circadian clock. *Genes & development*. 2006; 20:1868–1873. [PubMed: 16847346]
- Kong HH, Oh J, Deming C, Conlan S, Grice EA, Beatson MA, Nomicos E, Polley EC, Komarow HD, Program NCS, Murray PR, Turner ML, Segre JA. Temporal shifts in the skin microbiome associated with disease flares and treatment in children with atopic dermatitis. *Genome research*. 2012; 22:850–859. [PubMed: 22310478]
- Kovacikova Z, Sladek M, Bendova Z, Illnerova H, Sumova A. Expression of clock and clock-driven genes in the rat suprachiasmatic nucleus during late fetal and early postnatal development. *Journal of biological rhythms*. 2006; 21:140–148. [PubMed: 16603678]
- Kowalska E, Ripperger JA, Hoegger DC, Bruegger P, Buch T, Birchler T, Mueller A, Albrecht U, Contaldo C, Brown SA. NONO couples the circadian clock to the cell cycle. *Proceedings of the National Academy of Sciences of the United States of America*. 2013; 110:1592–1599. [PubMed: 23267082]
- Kumar V, Andersen B, Takahashi JS. Epidermal stem cells ride the circadian wave. *Genome biology*. 2013; 14:140. [PubMed: 24286354]
- Lapouge G, Youssef KK, Vokaer B, Achouri Y, Michaux C, Sotiropoulou PA, Blanpain C. Identifying the cellular origin of squamous skin tumors. *Proceedings of the National Academy of Sciences of the United States of America*. 2011; 108:7431–7436. [PubMed: 21502497]
- Le Fur I, Reinberg A, Lopez S, Morizot F, Mechkouri M, Tschachler E. Analysis of circadian and ultradian rhythms of skin surface properties of face and forearm of healthy women. *The Journal of investigative dermatology*. 2001; 117:718–724. [PubMed: 11564182]
- Lengyel Z, Battyani Z, Szekeres G, Csernus V, Nagy AD. Circadian clocks and tumor biology: what is to learn from human skin biopsies? *General and comparative endocrinology*. 2013a; 188:67–74. [PubMed: 23608545]
- Lengyel Z, Lovig C, Kommedal S, Keszthelyi R, Szekeres G, Battyani Z, Csernus V, Nagy AD. Altered expression patterns of clock gene mRNAs and clock proteins in human skin tumors. *Tumour biology : the journal of the International Society for Oncodevelopmental Biology and Medicine*. 2013b; 34:811–819. [PubMed: 23242607]
- Leung DY, Boguniewicz M, Howell MD, Nomura I, Hamid QA. New insights into atopic dermatitis. *The Journal of clinical investigation*. 2004; 113:651–657. [PubMed: 14991059]
- Li WQ, Qureshi AA, Schernhammer ES, Han J. Rotating night-shift work and risk of psoriasis in US women. *The Journal of investigative dermatology*. 2013; 133:565–567. [PubMed: 22931920]
- Lin KK, Kumar V, Geyfman M, Chudova D, Ihler AT, Smyth P, Paus R, Takahashi JS, Andersen B. Circadian clock genes contribute to the regulation of hair follicle cycling. *PLoS genetics*. 2009; 5:e1000573. [PubMed: 19629164]
- Lopez-Pajares V, Yan K, Zarnegar BJ, Jameson KL, Khavari PA. Genetic pathways in disorders of epidermal differentiation. *Trends in genetics : TIG*. 2013; 29:31–40. [PubMed: 23141808]
- Maier B, Kramer A. A NONO-gate times the cell cycle. *Proceedings of the National Academy of Sciences of the United States of America*. 2013; 110:1565–1566. [PubMed: 23324741]
- Maria Berra C, de Oliveira CS, Machado Garcia CC, Reily Rocha CR, Koch Lerner L, de Andrade Lima LC, da Silva Baptista M, Martins Menck CF. Nucleotide excision repair activity on DNA damage induced by photoactivated methylene blue. *Free radical biology & medicine*. 2013; 61C: 343–356.
- Masri S, Cervantes M, Sassone-Corsi P. The circadian clock and cell cycle: interconnected biological circuits. *Current opinion in cell biology*. 2013; 25:730–734. [PubMed: 23969329]

- Matsunaga N, Itcho K, Hamamura K, Ikeda E, Ikeyama H, Furuichi Y, Watanabe M, Koyanagi S, Ohdo S. 24-hour rhythm of aquaporin-3 function in the epidermis is regulated by molecular clocks. *The Journal of investigative dermatology*. 2014; 134:1636–1644. [PubMed: 24418925]
- Matsuo T, Yamaguchi S, Mitsui S, Emi A, Shimoda F, Okamura H. Control mechanism of the circadian clock for timing of cell division in vivo. *Science*. 2003; 302:255–259. [PubMed: 12934012]
- Mohawk JA, Green CB, Takahashi JS. Central and peripheral circadian clocks in mammals. *Annual review of neuroscience*. 2012; 35:445–462.
- Morgan BA. The dermal papilla: an instructive niche for epithelial stem and progenitor cells in development and regeneration of the hair follicle. *Cold Spring Harbor perspectives in medicine*. 2014; 4:a015180. [PubMed: 24985131]
- Morris RJ, Liu Y, Marles L, Yang Z, Trempus C, Li S, Lin JS, Sawicki JA, Cotsarelis G. Capturing and profiling adult hair follicle stem cells. *Nature biotechnology*. 2004; 22:411–417.
- Mukherji A, Kobiita A, Ye T, Chambon P. Homeostasis in intestinal epithelium is orchestrated by the circadian clock and microbiota cues transduced by TLRs. *Cell*. 2013; 153:812–827. [PubMed: 23663780]
- Muller-Rover S, Handjiski B, van der Veen C, Eichmuller S, Foitzik K, McKay IA, Stenn KS, Paus R. A comprehensive guide for the accurate classification of murine hair follicles in distinct hair cycle stages. *The Journal of investigative dermatology*. 2001; 117:3–15. [PubMed: 11442744]
- Muller-Rover S, Tokura Y, Welker P, Furukawa F, Wakita H, Takigawa M, Paus R. E- and P-cadherin expression during murine hair follicle morphogenesis and cycling. *Experimental dermatology*. 1999; 8:237–246. [PubMed: 10439220]
- Nakamura Y, Harama D, Shimokawa N, Hara M, Suzuki R, Tahara Y, Ishimaru K, Katoh R, Okumura K, Ogawa H, Shibata S, Nakao A. Circadian clock gene *Period2* regulates a time-of-day-dependent variation in cutaneous anaphylactic reaction. *The Journal of allergy and clinical immunology*. 2011; 127:1038–1045. e1031–1033. [PubMed: 21458659]
- Nakamura Y, Nakano N, Ishimaru K, Hara M, Ikegami T, Tahara Y, Katoh R, Ogawa H, Okumura K, Shibata S, Nishiyama C, Nakao A. Circadian regulation of allergic reactions by the mast cell clock in mice. *The Journal of allergy and clinical immunology*. 2014; 133:568–575. [PubMed: 24060274]
- Neal JV, Potten CS. Circadian rhythms in the epithelial cells and the pericyptal fibroblast sheath in three different sites in the murine intestinal tract. *Cell and tissue kinetics*. 1981; 14:581–587. [PubMed: 7296624]
- Nickoloff BJ, Nestle FO. Recent insights into the immunopathogenesis of psoriasis provide new therapeutic opportunities. *The Journal of clinical investigation*. 2004; 113:1664–1675. [PubMed: 15199399]
- Nishimura EK, Granter SR, Fisher DE. Mechanisms of hair graying: incomplete melanocyte stem cell maintenance in the niche. *Science*. 2005; 307:720–724. [PubMed: 15618488]
- Oishi K, Fukui H, Sakamoto K, Miyazaki K, Kobayashi H, Ishida N. Differential expressions of *mPer1* and *mPer2* mRNAs under a skeleton photoperiod and a complete light-dark cycle. *Brain research Molecular brain research*. 2002; 109:11–17. [PubMed: 12531511]
- Paschos GK, Ibrahim S, Song WL, Kunieda T, Grant G, Reyes TM, Bradfield CA, Vaughan CH, Eiden M, Masoodi M, Griffin JL, Wang F, Lawson JA, Fitzgerald GA. Obesity in mice with adipocyte-specific deletion of clock component *Arntl*. *Nature medicine*. 2012; 18:1768–1777.
- Pasparakis M, Haase I, Nestle FO. Mechanisms regulating skin immunity and inflammation. *Nature reviews Immunology*. 2014; 14:289–301.
- Paus R, Foitzik K. In search of the “hair cycle clock”: a guided tour. *Differentiation; research in biological diversity*. 2004; 72:489–511.
- Paus R, Muller-Rover S, Van Der Veen C, Maurer M, Eichmuller S, Ling G, Hofmann U, Foitzik K, Mecklenburg L, Handjiski B. A comprehensive guide for the recognition and classification of distinct stages of hair follicle morphogenesis. *The Journal of investigative dermatology*. 1999; 113:523–532. [PubMed: 10504436]

- Plikus MV. New activators and inhibitors in the hair cycle clock: targeting stem cells' state of competence. *The Journal of investigative dermatology*. 2012; 132:1321–1324. [PubMed: 22499035]
- Plikus MV, Chuong CM. Complex hair cycle domain patterns and regenerative hair waves in living rodents. *The Journal of investigative dermatology*. 2008; 128:1071–1080. [PubMed: 18094733]
- Plikus MV, Gay DL, Treffeisen E, Wang A, Supapannachart RJ, Cotsarelis G. Epithelial stem cells and implications for wound repair. *Seminars in cell & developmental biology*. 2012; 23:946–953. [PubMed: 23085626]
- Plikus MV, Mayer JA, de la Cruz D, Baker RE, Maini PK, Maxson R, Chuong CM. Cyclic dermal BMP signalling regulates stem cell activation during hair regeneration. *Nature*. 2008; 451:340–344. [PubMed: 18202659]
- Plikus MV, Vollmers C, de la Cruz D, Chaix A, Ramos R, Panda S, Chuong CM. Local circadian clock gates cell cycle progression of transient amplifying cells during regenerative hair cycling. *Proceedings of the National Academy of Sciences of the United States of America*. 2013; 110:E2106–2115. [PubMed: 23690597]
- Prendergast BJ, Cable EJ, Patel PN, Pyter LM, Onishi KG, Stevenson TJ, Ruby NF, Bradley SP. Impaired leukocyte trafficking and skin inflammatory responses in hamsters lacking a functional circadian system. *Brain, behavior, and immunity*. 2013; 32:94–104.
- Ramos R, Guerrero-Juarez CF, Plikus MV. Hair follicle signaling networks: a dermal papillacentric approach. *The Journal of investigative dermatology*. 2013; 133:2306–2308. [PubMed: 24030645]
- Randall VA, Ebling FJ. Seasonal changes in human hair growth. *The British journal of dermatology*. 1991; 124:146–151. [PubMed: 2003996]
- Reinberg AE, Toutou Y, Soudant E, Bernard D, Bazin R, Mechkouri M. Oral contraceptives alter circadian rhythm parameters of cortisol, melatonin, blood pressure, heart rate, skin blood flow, transepidermal water loss, and skin amino acids of healthy young women. *Chronobiology international*. 1996; 13:199–211. [PubMed: 8874983]
- Relogio A, Thomas P, Medina-Perez P, Reischl S, Bervoets S, Gloc E, Riemer P, Mang-Fatehi S, Maier B, Schafer R, Leser U, Herzl H, Kramer A, Sers C. Ras-mediated deregulation of the circadian clock in cancer. *PLoS genetics*. 2014; 10:e1004338. [PubMed: 24875049]
- Rompolas P, Greco V. Stem cell dynamics in the hair follicle niche. *Seminars in cell & developmental biology*. 2014; 25-26:34–42. [PubMed: 24361866]
- Rompolas P, Mesa KR, Greco V. Spatial organization within a niche as a determinant of stem-cell fate. *Nature*. 2013; 502:513–518. [PubMed: 24097351]
- Rosbash M. The implications of multiple circadian clock origins. *PLoS biology*. 2009; 7:e62. [PubMed: 19296723]
- Sahar S, Sassone-Corsi P. Regulation of metabolism: the circadian clock dictates the time. *Trends in endocrinology and metabolism: TEM*. 2012; 23:1–8. [PubMed: 22169754]
- Sandu C, Dumas M, Malan A, Sambakhe D, Marteau C, Nizard C, Schnebert S, Perrier E, Challet E, Pevet P, Felder-Schmittbuhl MP. Human skin keratinocytes, melanocytes, and fibroblasts contain distinct circadian clock machineries. *Cellular and molecular life sciences : CMLS*. 2012; 69:3329–3339. [PubMed: 22627494]
- Sanford JA, Gallo RL. Functions of the skin microbiota in health and disease. *Seminars in immunology*. 2013; 25:370–377. [PubMed: 24268438]
- Scheiermann C, Kunisaki Y, Frenette PS. Circadian control of the immune system. *Nature reviews Immunology*. 2013; 13:190–198.
- Schneider MR, Schmidt-Ullrich R, Paus R. The hair follicle as a dynamic miniorgan. *Curr Biol*. 2009; 19:R132–142. [PubMed: 19211055]
- Schon MP, Detmar M, Parker CM. Murine psoriasis-like disorder induced by naive CD4+ T cells. *Nature medicine*. 1997; 3:183–188.
- Shi SQ, Ansari TS, McGuinness OP, Wasserman DH, Johnson CH. Circadian disruption leads to insulin resistance and obesity. *Curr Biol*. 2013; 23:372–381. [PubMed: 23434278]
- Shostak A, Husse J, Oster H. Circadian regulation of adipose function. *Adipocyte*. 2013a; 2:201–206. [PubMed: 24052895]

- Shostak A, Meyer-Kovac J, Oster H. Circadian regulation of lipid mobilization in white adipose tissues. *Diabetes*. 2013b; 62:2195–2203. [PubMed: 23434933]
- Sigurdardottir LG, Valdimarsdottir UA, Fall K, Rider JR, Lockley SW, Schernhammer E, Mucci LA. Circadian disruption, sleep loss, and prostate cancer risk: a systematic review of epidemiologic studies. *Cancer epidemiology, biomarkers & prevention : a publication of the American Association for Cancer Research, cosponsored by the American Society of Preventive Oncology*. 2012; 21:1002–1011.
- Silver AC, Arjona A, Walker WE, Fikrig E. The circadian clock controls toll-like receptor 9-mediated innate and adaptive immunity. *Immunity*. 2012; 36:251–261. [PubMed: 22342842]
- Sladek M, Jindrakova Z, Bendova Z, Sumova A. Postnatal ontogenesis of the circadian clock within the rat liver. *American journal of physiology Regulatory, integrative and comparative physiology*. 2007; 292:R1224–1229.
- Snippert HJ, Haegerbarth A, Kasper M, Jaks V, van Es JH, Barker N, van de Wetering M, van den Born M, Begthel H, Vries RG, Stange DE, Toftgard R, Clevers H. Lgr6 marks stem cells in the hair follicle that generate all cell lineages of the skin. *Science*. 2010; 327:1385–1389. [PubMed: 20223988]
- Sporl F, Korge S, Jurchott K, Wunderskirchner M, Schellenberg K, Heins S, Specht A, Stoll C, Klemz R, Maier B, Wenck H, Schrader A, Kunz D, Blatt T, Kramer A. Kruppel-like factor 9 is a circadian transcription factor in human epidermis that controls proliferation of keratinocytes. *Proceedings of the National Academy of Sciences of the United States of America*. 2012; 109:10903–10908. [PubMed: 22711835]
- Srinivas G, Moller S, Wang J, Kunzel S, Zillikens D, Baines JF, Ibrahim SM. Genome-wide mapping of gene-microbiota interactions in susceptibility to autoimmune skin blistering. *Nature communications*. 2013; 4:2462.
- Stenn KS, Paus R. Controls of hair follicle cycling. *Physiological reviews*. 2001; 81:449–494. [PubMed: 11152763]
- Takita E, Yokota S, Tahara Y, Hirao A, Aoki N, Nakamura Y, Nakao A, Shibata S. Biological clock dysfunction exacerbates contact hypersensitivity in mice. *The British journal of dermatology*. 2013; 168:39–46. [PubMed: 22834538]
- Tanioka M, Yamada H, Doi M, Bando H, Yamaguchi Y, Nishigori C, Okamura H. Molecular clocks in mouse skin. *The Journal of investigative dermatology*. 2009; 129:1225–1231. [PubMed: 19037239]
- Tumbar T, Guasch G, Greco V, Blanpain C, Lowry WE, Rendl M, Fuchs E. Defining the epithelial stem cell niche in skin. *Science*. 2004; 303:359–363. [PubMed: 14671312]
- Uitto J. The role of elastin and collagen in cutaneous aging: intrinsic aging versus photoexposure. *Journal of drugs in dermatology : JDD*. 2008; 7:s12–16. [PubMed: 18404866]
- van Deursen JM. The role of senescent cells in ageing. *Nature*. 2014; 509:439–446. [PubMed: 24848057]
- Watabe Y, Tomioka M, Watabe A, Aihara M, Shimba S, Inoue H. The clock gene brain and muscle Arnt-like protein-1 (BMAL1) is involved in hair growth. *Archives of dermatological research*. 2013; 305:755–761. [PubMed: 23955654]
- Watanabe M, Hida A, Kitamura S, Enomoto M, Ohsawa Y, Katayose Y, Nozaki K, Moriguchi Y, Aritake S, Higuchi S, Tamura M, Kato M, Mishima K. Rhythmic expression of circadian clock genes in human leukocytes and beard hair follicle cells. *Biochemical and biophysical research communications*. 2012; 425:902–907. [PubMed: 22902636]
- Watts LM, Browne JA, Murphy BA. Investigation of a non-invasive method of assessing the equine circadian clock using hair follicle cells. *Journal of circadian rhythms*. 2012; 10:7. [PubMed: 23039139]
- White AC, Khuu JK, Dang CY, Hu J, Tran KV, Liu A, Gomez S, Zhang Z, Yi R, Scumpia P, Grigorian M, Lowry WE. Stem cell quiescence acts as a tumour suppressor in squamous tumours. *Nature cell biology*. 2014; 16:99–107.
- Yan J, Wang H, Liu Y, Shao C. Analysis of gene regulatory networks in the mammalian circadian rhythm. *PLoS computational biology*. 2008; 4:e1000193. [PubMed: 18846204]

Yosipovitch G, Xiong GL, Haus E, Sackett-Lundeen L, Ashkenazi I, Maibach HI. Time-dependent variations of the skin barrier function in humans: transepidermal water loss, stratum corneum hydration, skin surface pH, and skin temperature. *The Journal of investigative dermatology*. 1998; 110:20–23. [PubMed: 9424081]

Zanello SB, Jackson DM, Holick MF. Expression of the circadian clock genes clock and period1 in human skin. *The Journal of investigative dermatology*. 2000; 115:757–760. [PubMed: 10998156]

Author Manuscript

Author Manuscript

Author Manuscript

Author Manuscript

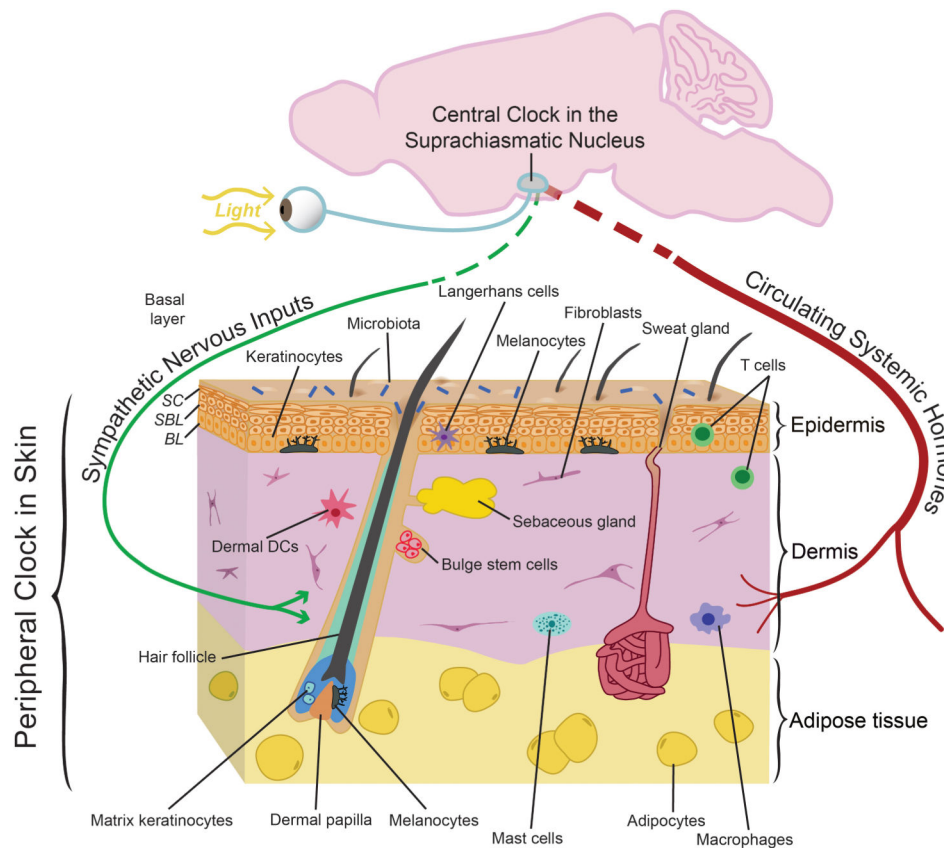


Figure 1. The complex anatomical organization of skin and its circadian clocks

The schematic drawing depicts the three principle layers of the skin: the keratinocyte-containing epidermis (brown), the fibroblast-rich dermis (purple) and the fat cell-containing adipose tissue (yellow). The interfollicular epidermis is a stratified squamous epithelium containing stem/progenitor cells in the basal layer (BL) and post-mitotic differentiated cells in the suprabasal layers (SBL). The top layer of the epidermis, the stratum corneum (SC), is composed of dead cells with a tough cell envelope that is sealed by an impermeable intercellular lipid layer. Also, highlighted are hair follicles with the associated lipid-rich sebaceous glands, as well as sweat glands; both are keratinocyte-containing mini organs which develop as outgrowths from the epidermis. The skin is also inhabited by melanocytes, melanin-producing pigment cells that confer color to hair and skin. In mice, melanocytes are primarily found in hair follicles while in humans melanocytes are also prominent at the epidermal-dermal junction. In addition, several types of resident and transient immune cells are found within the skin. These include Langerhans cells and dendritic cells (DCs), antigen-presenting cells residing in the epidermis and dermis, respectively, as well as lymphocytes, macrophages and mast cells. The skin is also richly vascularized and innervated; cells within these structures likely have their own circadian clock that could modify their functions including sensory responses, heat regulation and oxygenation. The surface of the skin is populated by a large number of commensal bacteria (microbiota) that may play a role in skin function and disease. There is evidence for active circadian clock in all cell types of the skin, and it is highly likely that distinct functions are modulated in different cell types. It is also known that circadian clock activity in skin is coordinated by the suprachiasmatic nucleus,

presumably through neuronal and hormonal mediators although this remains to be defined in skin.

Author Manuscript

Author Manuscript

Author Manuscript

Author Manuscript

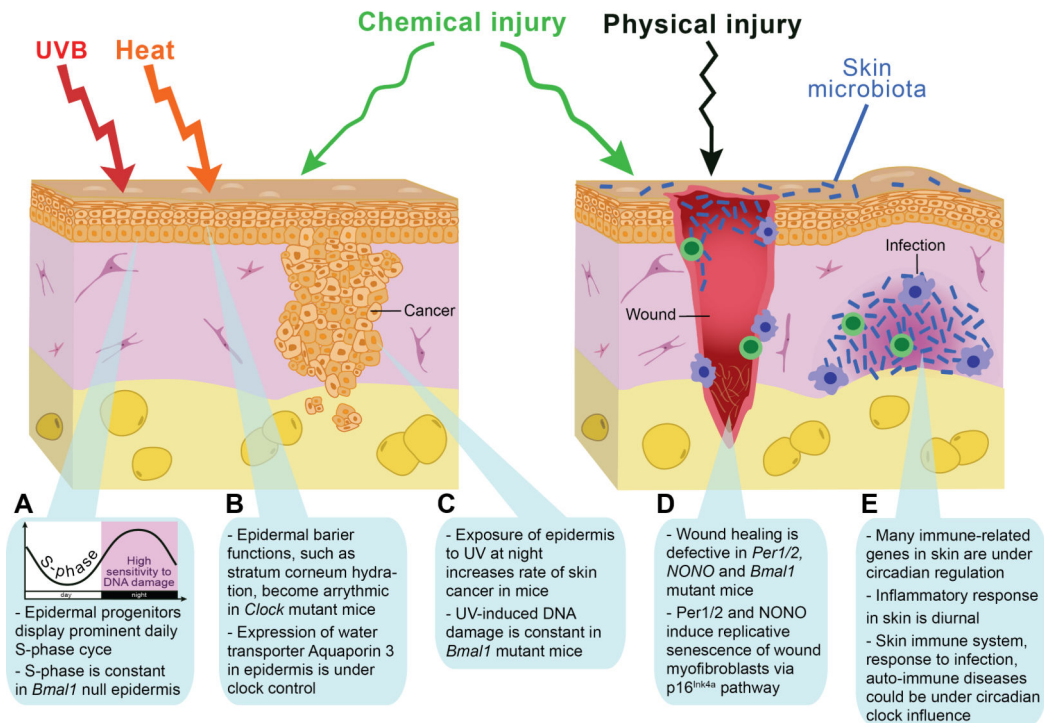


Figure 2. The circadian clock modulates skin responses to environmental stresses

Protection against a variety of environmental insults -- these include UVB radiation, temperature, chemical and physical injury and microbial infections -- is a major function of the skin. (A, C) There are prominent diurnal rhythms in DNA replication, DNA repair mechanisms and cell division in progenitor/stem cells of the epidermis -- features that depend on an intact circadian clock within epidermal keratinocytes. Exposure of mouse epidermis to UVB at night, during the replicative burst when DNA excision repair is at its nadir, causes more DNA damage and higher incidence of skin cancer than during the day. Based on these mouse studies, and the fact that in diurnal humans the epidermis is more proliferative during the day, it has been proposed that the epidermis could be most susceptible to UVB-induced DNA damage during the day, the time of maximum solar exposure (Gaddameedhi et al., 2011; Geyfman et al., 2012). If correct, this hypothesis implies that the circadian clock confers regulation that promotes rather than protects against UVB-induced skin cancer formation and skin aging in humans.

(B) Epidermal barrier functions, such as transepidermal water loss and stratum corneum hydration are also prominently regulated by the circadian clock and become largely arrhythmic in *Clock* mutant mice. Diurnal cycle in epidermal barrier functions at least in part depend on the daily changes in Aquaporin 3 expression levels -- the putative clock output gene in basal epidermal keratinocytes.

(D) Disruption of the circadian clock in the germline leads to aberrant wound healing in mice. Wound healing is a very complex process involving most, if not all, major cell types in the skin and the underlying mechanisms for clock modulation of wound healing remain to be defined. However, it is known that during injury-induced wound healing, the circadian clock contributes to the replicative slowdown of myfibroblasts (*aka* senescence), a process important for conversion from scar production to scar remodeling and its proper maturation.

(E) The immune system is under control of the circadian clock. The influx of immune cells into tissues has been shown to be regulated by the circadian clock. In the skin, studies in hamsters have shown circadian variation in the trafficking of antigen presenting cells. In mice, both acute and delayed-type inflammatory responses have been linked to clock regulation. Many immune-related genes in skin have circadian rhythmicity, suggesting that skin responses to infection and autoimmune insults can be time-of-day dependent.

Author Manuscript

Author Manuscript

Author Manuscript

Author Manuscript

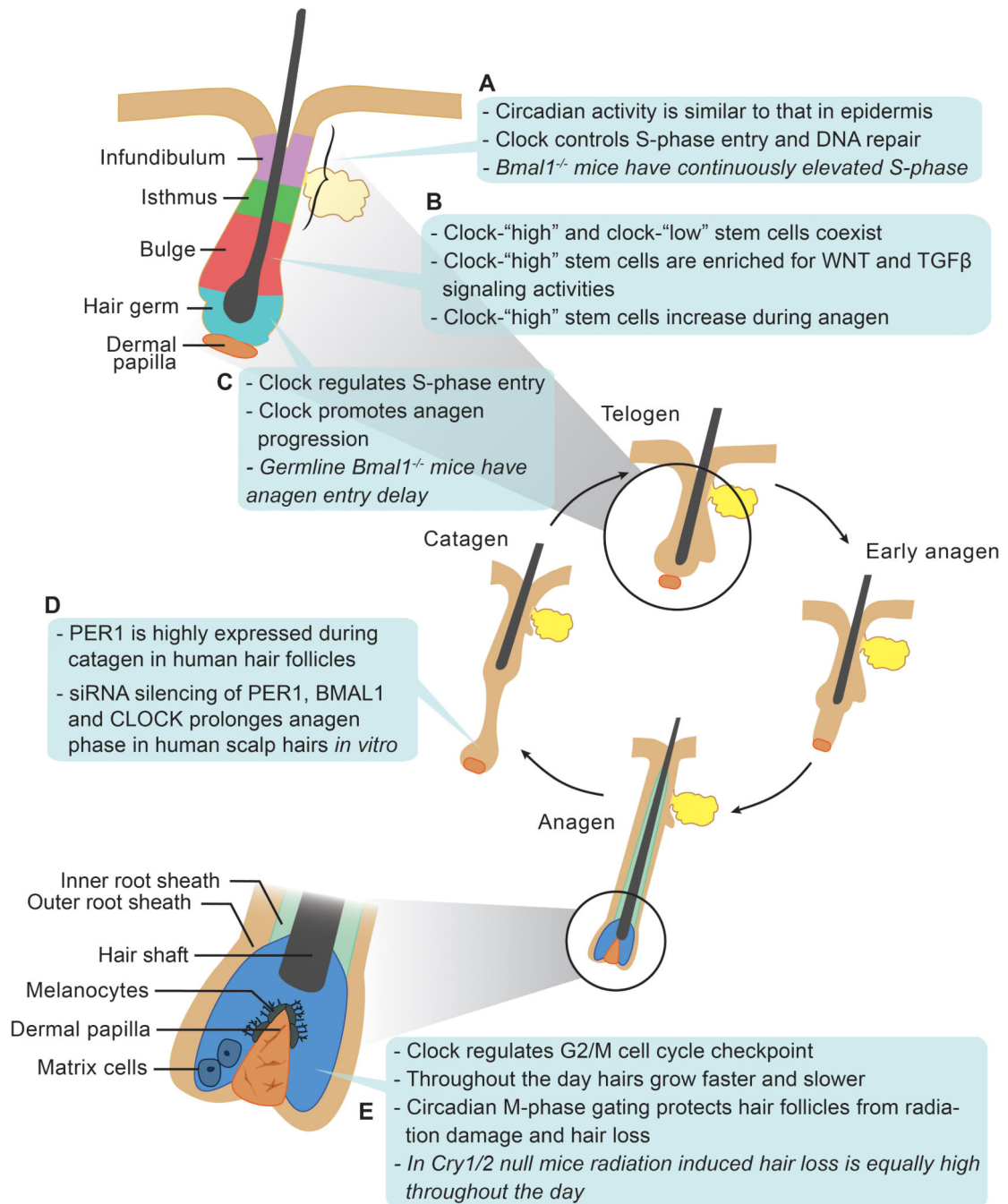


Figure 3. The circadian clock modulates hair follicle regeneration

(A) Circadian clock activity in the infundibulum and isthmus of hair follicles is similar to that of the interfollicular epidermis. In these progenitor/stem cell populations, the clock intrinsic to keratinocytes is required for diurnal variation in DNA replication. (B) There is heterogeneity in circadian output in bulge stem cells. High clock activity correlates with the high expression of WNT and TGF β pathway genes, components of signaling pathways involved in stem cell activation. The functional consequence of clock-WNT/TGF β connection is unclear, because deletion of *Bmal1* within keratinocytes does not affect stem

cell activation and timing of the first two hair growth cycles (Geyfman et al., 2012). Clock regulation of these signaling pathways, however, could affect the aging and cancer forming susceptibility of these stem cells. **(C)** Epithelial hair germ progenitors display prominent circadian activity prior to and during anagen onset. Whereas germline deletion of *Bmal1* delays anagen initiation, such effects are not found in mice deleted for *Bmal1* in keratinocytes. These findings suggest that the influence of the clock on anagen initiation is through other cell types, for example dermal papilla cells, or through more global regulation, such as modulation of systemic hormones that affect hair growth. **(D)** Silencing on clock genes in human hair follicles *in vitro* prolongs active growth phase. Due to technical limitations, the influence of the clock on other aspects of human hair follicle growth could not be studied. **(E)** During active growth phase in mouse hair follicles, circadian clock gates cell cycle progression in the epithelial matrix cells at the G2/M checkpoint. Administration of ionizing radiation to mice leads to more severe hair loss in the morning, during the mitotic peak.

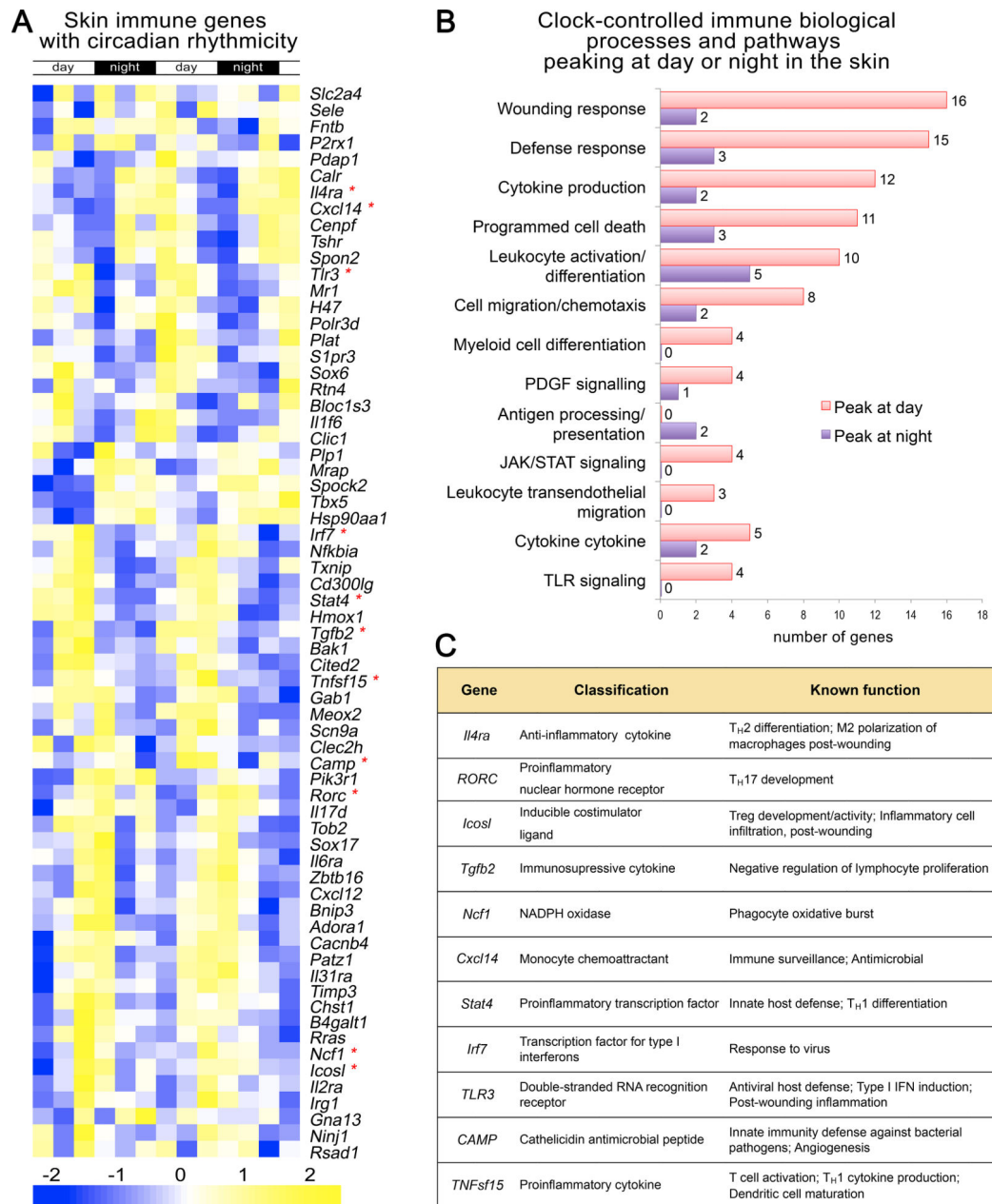


Figure 4. Many immune genes in skin display circadian rhythmicity

(A) A heat map showing the expression of immune-related genes in telogen over two days based on previously published whole skin microarray datasets generated in mice (Geyfman et al., 2012). Multiple genes with established immune function exhibit circadian expression. The day and night periods are indicated at the top and the gene expression strength indicated at the bottom. (B) Shown is the gene ontology for the circadian immune genes. The number at the end of bars refers to the number of genes with the specific function. Genes that peak at day or night are indicated with the pink and purple color. (C) The function of selective immune genes is indicated. These genes are marked with an asterisk in A.