

# Immediate expression of c-fos and c-jun mRNA in a model of intestinal autotransplantation and ischemia-reperfusion *in situ*

Maria Mercês Santos, Ana Cristina Aoun Tannuri, Maria Cecilia Mendonça Coelho, Josiane de Oliveira Gonçalves, Suellen Serafini, Luiz Fernando Ferraz da Silva, Uenis Tannuri\*

Faculdade de Medicina da Universidade de São Paulo, Pediatric Surgery Division, Pediatric Liver Transplantation Unit and Laboratory of Research in Pediatric Surgery (LIM 30), São Paulo/SP, Brazil.

**OBJECTIVE:** Intestinal ischemia-reperfusion injury occurs in several clinical conditions and after intestinal transplantation. The aim of the present study was to investigate the phenomena of apoptosis and cell proliferation in a previously described intestinal ischemia-reperfusion injury autograft model using immunohistochemical markers. The molecular mechanisms involved in ischemia-reperfusion injury repair were also investigated by measuring the expression of the early activation genes *c-fos* and *c-jun*, which induce apoptosis and cell proliferation.

**MATERIALS AND METHODS:** Thirty adult male Wistar rats were subjected to surgery for a previously described ischemia-reperfusion model that preserved the small intestine, the cecum and the ascending colon. Following reperfusion, the cecum was harvested at different time points as a representative segment of the intestine. The rats were allocated to the following four subgroups according to the reperfusion time: subgroup 1: 5 min; subgroup 2: 15 min; subgroup 3: 30 min; and subgroup 4: 60 min. A control group of cecum samples was also collected. The expression of *c-fos*, *c-jun* and immunohistochemical markers of cell proliferation and apoptosis (Ki67 and TUNEL, respectively) was studied.

**RESULTS:** The expression of both *c-fos* and *c-jun* in the cecum was increased beginning at 5 min after ischemia-reperfusion compared with the control. The expression of *c-fos* began to increase at 5 min, peaked at 30 min, and exhibited a declining tendency at 60 min after reperfusion. A progressive increase in *c-jun* expression was observed. Immunohistochemical analyses confirmed these observations.

**CONCLUSION:** The early activation of the *c-fos* and *c-jun* genes occurred after intestinal ischemia-reperfusion injury, and these genes can act together to trigger cell proliferation and apoptosis.

**KEYWORDS:** Ischemia-reperfusion injury; Immediate early genes; Activator protein 1; Small intestine; C-fos; C-jun gene.

Santos MM, Tannuri AC, Coelho MC, Gonçalves JO, Serafini S, Silva LF, et al. Immediate expression of c-fos and c-jun mRNA in a model of intestinal autotransplantation and ischemia-reperfusion *in situ*. Clinics. 2015;70(5):373-379

Received for publication on December 3, 2014; First review completed on January 28, 2015; Accepted for publication on February 6, 2015

E-mail: uenist@usp.br

\*Corresponding author

## INTRODUCTION

Intestinal ischemia-reperfusion (I/R) injury occurs in several clinical conditions and after intestinal transplantation. The hypoxia and tissue damage caused by I/R injury can, in turn, result in severe complications, and following intestinal transplantation, this type of injury plays a determining role in early graft dysfunction and long-term

graft survival (1–4). The number of cells present in adult tissue is determined based on the balance between destroyed and regenerated cells, and apoptosis plays an important role in this process of homeostasis under both physiological and pathological conditions (5). As a function of apoptosis, some gastrointestinal mucosal cells are periodically lost, leaving room for their physiological renewal, which occurs in association with the proliferation of local totipotent cells. Apoptosis and regeneration can also be triggered by I/R injury at the molecular level (6). In addition, apoptosis has been described as a marker of intestinal graft rejection (7). The process of intestinal regeneration after I/R injury involves increased DNA synthesis as well as the rapid and brief expression of immediate early response genes (IEGs) (4), including those which encode the transcription factors *c-fos* and *c-jun*. IEGs, which are expressed in a rapid and

**Copyright** © 2015 CLINICS – This is an Open Access article distributed under the terms of the Creative Commons Attribution Non-Commercial License (<http://creativecommons.org/licenses/by-nc/3.0/>) which permits unrestricted non-commercial use, distribution, and reproduction in any medium, provided the original work is properly cited.

No potential conflict of interest was reported.

**DOI:** 10.6061/clinics/2015(05)12



transient manner, can be induced by several factors, including I/R injury.

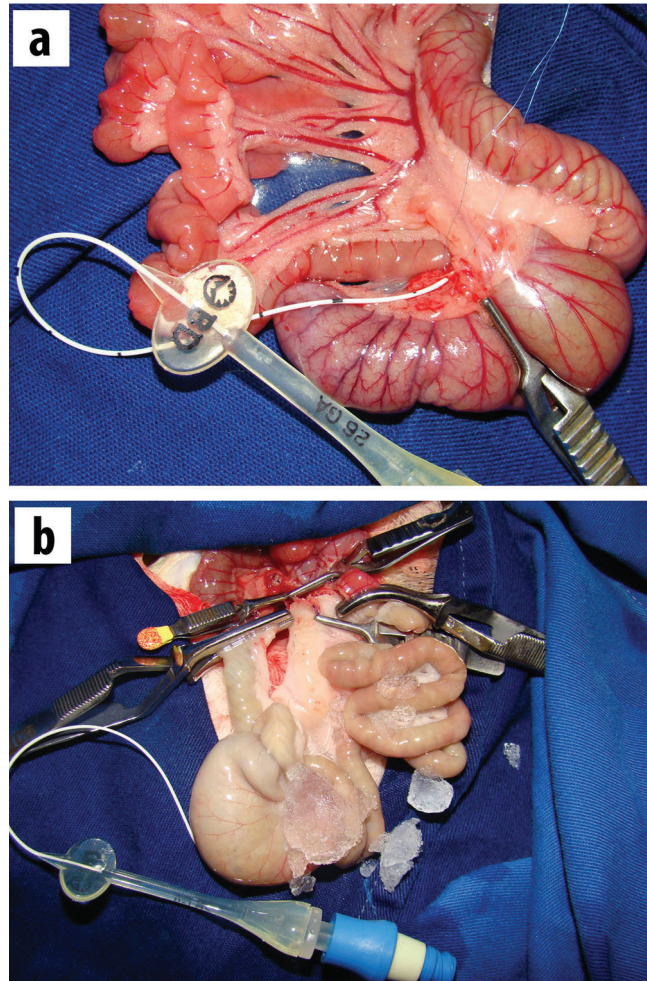
The cellular genes *c-fos* and *c-jun* dimerize to form the activator protein-1 (AP-1) transcription factor complex. In addition, each forms several other stable homo- or heterodimeric complexes that bind to DNA regulatory, promoter, and potentiation regions thus controlling the transcription of numerous target genes. Both *c-fos* and *c-jun* contain leucine zippers that are responsible for their dimerization and for the regulation of cellular response genes following injury. Those genes can be expressed within minutes after the exposure of cells to a given stimulus, and the resulting products participate in several metabolic processes, such as the regulation of cell proliferation, differentiation, and apoptosis (8). The aim of the present study was to investigate the phenomena of apoptosis and cell proliferation in a previously described intestinal I/R injury autograft model involving cold preservation of the intestine. This model allows for the study of the physiological changes that occur following intestinal transplantation without the interference of immune aggression induced by the graft (2).

In cold ischemic preservation of the intestine, hypothermia protects against I/R injury (9,10). We quantified apoptosis and the cell proliferation index via histological examination and immunohistochemical analysis. We also investigated the molecular mechanisms involved in I/R injury repair by measuring the expression of the early activation genes *c-fos* and *c-jun*, which induce apoptosis and cell proliferation. A better understanding of the phenomena underlying I/R injury may allow for the identification of interventions to reduce its occurrence and, thus, to achieve better preservation of the intestinal graft.

## ■ MATERIALS AND METHODS

Thirty adult male Wistar rats were subjected to surgery using the previously described I/R model involving perfusion through the cecal artery (2). Briefly, under an operating microscope (10X magnification), the mesocolon was sectioned from the cecum to the level of the middle colic artery. In the root of the mesentery, the mesenteric artery and vein were completely dissected and isolated by sectioning all of the nervous and lymphatic tissues to an extension of approximately 1 cm.

All of the mesentery between the superior mesenteric artery and the jejunum (6–8 cm below the ligament of Treitz) was also sectioned. After these procedures, the distal branch of the superior mesenteric artery corresponding to the cecum was dissected (under a microscope at 40X magnification) in an extension that was sufficient for cannulation with a 1.9 French silicone catheter (Figure 1A). Close to the cecal valve, there was a consistently located lymph node that served as a reference point for the localization of the cecal artery. The jejunum and the ascending colon were clamped, and the superior mesenteric artery and vein were occluded using non-traumatic vascular clamps. The superior mesenteric artery was irrigated with lactated Ringer's solution at 4°C through a previously inserted cannula in the cecal artery, and perfusion was performed using an infusion pump at a rate of 40 ml of solution per hour, accompanied by the additional cooling of the peritoneal cavity with ice (Figure 1B). The effluent flowed out through a small leak in the superior mesenteric vein. The perfusion was considered adequate when the intestine and the mesentery were completely pale and the effluent was clear. Then, perfusion was interrupted (the total volume necessary for perfusion was



**Figure 1 - A)** Cannulation of the distal branch of the superior mesenteric artery using a silicone catheter. **B)** Aspect of the intestine after irrigation with lactated Ringer's solution at 4°C.

2.5 to 5.0 ml), the opening of the mesenteric vein was sutured with 10-0 prolene, and the catheter was removed. Next, the clamps were immediately removed from the mesenteric artery and vein, and reperfusion of the intestine (graft) was confirmed based on the return of pulsatile mesenteric blood flow. The average duration of ischemia was  $18.37 \pm 5.06$  min. Following reperfusion, the cecum was harvested at different time points as representative intestinal samples. The rats were allocated to the following four subgroups according to the reperfusion time: subgroup 1: 5 min (n=9); subgroup 2: 15 min (n=7); subgroup 3: 30 min (n=8); and subgroup 4: 60 min (n=6). Additionally, a control group (n=7) was subjected to the same procedures except for I/R injury.

The harvested material was divided into two fragments. One fragment was immersed in 10% formaldehyde for histological processing and immunohistochemical analysis, and the other fragment was immediately frozen in liquid nitrogen at -170°C for RNA extraction.

## Immunohistochemical methods

**TUNEL assay.** The TUNEL assay is a method used to detect DNA fragmentation that results from the activation of



apoptotic cascades. In the present study, intestinal histological sections were fixed in 10% formalin, embedded in paraffin, sliced into 5- $\mu$ m-thick sections, and then deparaffinized. Following hydration, the sections were subjected to TUNEL staining and enzymatic digestion with proteinase K, followed by the blocking of endogenous peroxidase activity. Finally, the sections were immersed in sodium citrate and Triton X-100 solution to induce cell permeabilization, incubated in TdT enzyme solution and a mixture of nucleotides, washed with phosphate-buffered saline (PBS), and incubated in Converter-POD. The sections were processed to detect apoptotic cells using the chromogenic substrate 3,3'-diaminobenzidine (DAB) (Sigma<sup>®</sup>), followed by counterstaining with Harris hematoxylin, dehydration, and mounting. This assay was performed using intestinal samples from the control group, and the samples were harvested at 60 min after I/R to quantify apoptosis. This time point was selected because it exhibited the greatest expression of the *c-fos* and *c-jun* genes (2).

**Ki-67 staining.** To quantify intestinal cell proliferation, immunohistochemical staining for Ki-67 was performed on intestinal samples from the control group and the group of samples harvested at 60 min after I/R.

The monoclonal anti-Ki-67 antibody used was a mouse IgG1 antibody against a nuclear fraction of the L428 Hodgkin's lymphoma cell line. The anti-Ki-67 antibody recognizes and reacts with Ki-67, which is a nuclear protein detected at all active stages of the cell cycle except for G<sub>0</sub>; therefore, it serves as a marker of cell proliferation.

After fixation with 10% formaldehyde, the tissues were embedded in paraffin, sliced into 5- $\mu$ m-thick sections, deparaffinized, and hydrated. The sections were then processed for antigen recovery, blocking of endogenous peroxidase activity, and the immunohistochemical detection of Ki-67. For this purpose, the sections were incubated in the mouse monoclonal anti-rat Ki-67 antibody (clone MIB-5; DAKO) diluted 1:400. Staining was performed using the chromogenic substrate DAB (Sigma<sup>®</sup>), followed by counterstaining with Harris hematoxylin, dehydration, and mounting.

### Histomorphometric analysis

Histological analysis was performed using a Nikon<sup>®</sup> eclipse 50i microscope (Nikon Corporation Tokyo, Japan). Images were acquired using 10x ocular and 40x objective lenses. The full surface of the intestinal mucosa of each section was photographed for all of the slides. NIS-Elements BR<sup>®</sup> software controlled by an IBM computer was used to acquire digital color microscopic images. Histomorphometric analyses were performed using slides from the control group and the group of samples harvested at 60 min after reperfusion. To quantify the cells labeled in the TUNEL assay and by Ki-67 immunostaining, the digital images were analyzed using Image-Pro Plus 4.5 software (Media Cybernetics, Silver Spring, USA). TUNEL-positive cells were quantified by counting individual apoptotic cells in a defined area of interest, the size of which was automatically calculated by a previously calibrated computer system. Thus, the number of apoptotic cells per mm<sup>3</sup> was obtained. A total of 47 mucosal fragments from six animals in the control group and 80 mucosal fragments from six animals in the 60-min after reperfusion group were measured.

A macro (computer routine) was developed for use with Image-Pro Plus software, for which the interval of positive labeling was predefined by an experienced pathologist to perform the automatic counting of Ki-67-positive areas that were dark brown in color, as well as to calculate the total villus/delimited crypt areas. These calculations allowed us to determine the proportions of Ki-67-positive areas in the villi and the crypts. A total of 390 Ki-67-positive villus areas were measured in six animals from the control group, and 652 were measured from six animals in the group of cecum samples harvested at 60 min after I/R.

### Molecular methods

**Extraction of total RNA and reverse transcription.** The intestinal fragments that were freshly collected and immediately frozen in liquid nitrogen were stored at -170°C until processing to study the expression of the *c-fos* and *c-jun* genes in association with cell proliferation and apoptosis. First, total RNA was extracted from intestinal samples using TRIZOL<sup>™</sup> reagent (Invitrogen, Carlsbad, CA, USA). Approximately 100 mg of intestine was fragmented in a tissue mill (Mikro Dismembrator U, Sartorius AG, Goettingen, Germany) after the addition of liquid nitrogen and was then homogenized in 700  $\mu$ l of TRIZOL solution according to the manufacturer's protocol.

The total RNA concentration was measured using a spectrophotometer (BioPhotometer, Eppendorf AG, Germany) at 260 nm, and RNA quality was assessed by calculating the 260 nm/280 nm absorbance ratio. One microgram of RNA was subjected to agarose gel electrophoresis to assess its integrity by visualizing the fragments corresponding to 18S and 28S ribosomal RNAs.

Complementary DNA (cDNA) was prepared from 2  $\mu$ g of total RNA via reverse transcription using 200 U of SuperScript III RNase H-RT (Invitrogen) and oligo(dT)s as primers. The resulting cDNA solution was stored at -20°C.

Gene expression was evaluated by two methods, conventional semiquantitative RT-polymerase chain reaction (PCR) and real-time RT-PCR analyses, and the results of these two methods were compared.

**PCR and semiquantitative analysis of PCR products.** The specific primers for *c-fos* and *c-jun* used in the present study were previously described by Shima et al. (4). The  *$\beta$ -actin* gene was amplified as an internal control of RNA transcription. The primer sequences and the amplification conditions are described in Table 1. Double-distilled water was used in place of cDNA as a negative control. The total PCR volume of 25  $\mu$ l included the following reagents: 3  $\mu$ l of cDNA, 2 pmol of each forward and reverse primer, 200  $\mu$ M of each deoxynucleotide (dATP, dCTP, dGTP, and dTTP), 2.5  $\mu$ l of enzyme buffer, and 2 U of *Taq* DNA polymerase. A separate reaction was prepared for each investigated gene and was amplified according to the optimal parameters for the given primers using the same thermocycler (MJ Research, CA, USA). After an initial denaturation step at 95°C for 5 min, cycles of denaturation at 95°C for 60 sec, annealing for 60 sec (Table 1), and extension at 72°C were performed, followed by a final extension step at 72°C for 10 min. Each PCR reaction was repeated three times to ensure data consistency. The amplified product (10  $\mu$ l volume) was subjected to electrophoresis in a 2% agarose gel.





**Table 1** - Primer sequences and amplification conditions.

Gene	Primer sequence	Amplicon size (bp)	T <sub>a</sub>	Number of cycles
<i>β-actin</i>	5' - gcc aga gcg gga gtg gtg aa - 3' 5' - ggc ttg ggc tca ggg tca tt - 3'	309	53°C	29
<i>c-fos</i>	5' - gcc tcg ttc ctc cag tcc ga - 3' 5' - tgc gat gga aag gcc agc cc - 3'	434	53°C	32
<i>c-jun</i>	5' - acc ttc aac acc cca gcc atg - 3' 5' - ggc cat ctc ttg ctc gaa gtc - 3'	554	55°C	23

T<sub>a</sub>=annealing temperature  
bp=base pair

**Semiquantitative analysis of PCR products.** The gel was viewed using a Kodak Gel Logic 100 Imaging System (Kodak, Rochester, NY, USA). The magnitude of the expression of each gene was assessed by band densitometry using Kodak Molecular Imaging Software. The amounts of the *c-fos* and *c-jun* PCR products were normalized to those of *β-actin*. The expression levels of the *c-jun* and *c-fos* genes were presented as the means ± standard deviation of the average relative band densities.

**Real-time PCR and quantitative analysis of PCR products.** The primers used to amplify the *c-fos* and *β-actin* genes were the same as those used in semiquantitative RT-PCR, but other primers were synthesized to amplify the *c-jun* gene because in real-time PCR, the reactions for the target gene and the housekeeping gene are performed together, and the same annealing temperature should be used for both reactions. In addition, a smaller amplicon is required. The primer sequences for the *c-jun* gene were as follows: 5' caggtggcacagcttaaac 3' (forward); 5' cgcaaccagtcaagttctca 3' (reverse). The amplicon size was 162 base pairs.

Quantitative real-time PCR was performed in a 15.0 μL reaction mixture consisting of 7.5 μL of Platinum SYBR Green qPCR SuperMix-UDG (Invitrogen, Carlsbad, CA), 0.3 μL each of gene-specific forward and reverse primers (10 μM), 1.0 μL of cDNA, and 5.9 μL of nuclease-free water using a Rotor-Gene Q 5plex HRM thermal cycler (Qiagen, Germany).

The cycling conditions were as follows: initial template denaturation at 95 °C for 1 min, followed by 40 cycles of denaturation at 95 °C for 20 seconds, annealing at 60 °C for 30 seconds, and extension at 72 °C for 30 seconds. Fluorescence detection was performed during each cycle at 72°C to identify the positive samples. Each sample was assessed in triplicate, and controls lacking the template were included in parallel for each reaction.

Amplification was followed by melting curve analysis to assess PCR product specificity. The data were analyzed using the 2<sup>-ΔΔCT</sup> method of relative quantification (11).

### Statistical analysis

To compare the gene expression data obtained via semiquantitative RT-PCR, one-way analysis of variance (ANOVA) was performed, and the Bonferroni test was applied for comparisons between the groups. The gene expression data obtained via real-time PCR were analyzed using the Kruskal-Wallis test and the post hoc Tukey test because they had a non-parametric distribution. The TUNEL and Ki-67 immunofluorescence data were analyzed using PASW Statistics Base v.15.0 for Windows (SPSS Inc.®). The Mann-Whitney U test was used to compare pairs of groups. The data were expressed as the medians (interquartile ranges). Significance was established at *p* < 0.05.

## RESULTS

### Molecular studies

**Semiquantitative and quantitative analysis of PCR products.** The expression levels of the *c-fos* and *c-jun* genes as determined by semiquantitative and quantitative analyses are shown in Figures 2 and 3. The expression levels of these two genes coincided, with increases beginning at 5 min after reperfusion.

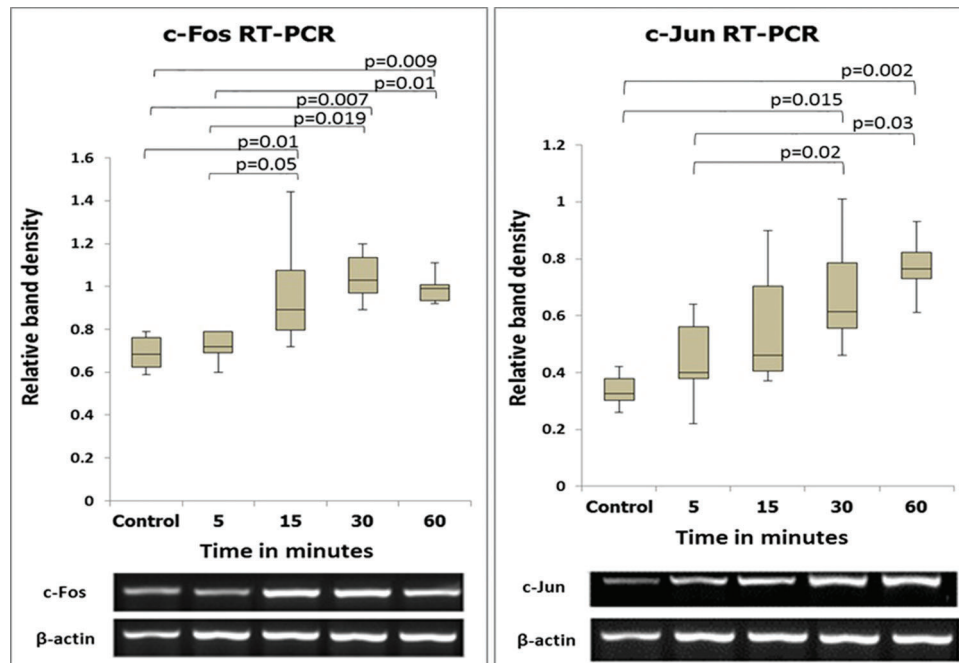
### Immunohistochemical analysis

Observation of the TUNEL-stained sections under a microscope revealed the presence of dark brown apoptotic bodies, predominantly in the mucosa. Counting of the apoptotic bodies revealed that the number of apoptotic cells in the group of cecum samples harvested at 60 min after I/R was greater than that in the control group (*p*=0.009). In addition, the proportion of Ki-67-positive area was significantly higher in this experimental group than in the control group (*p* < 0.001) (Figures 4 and 5).

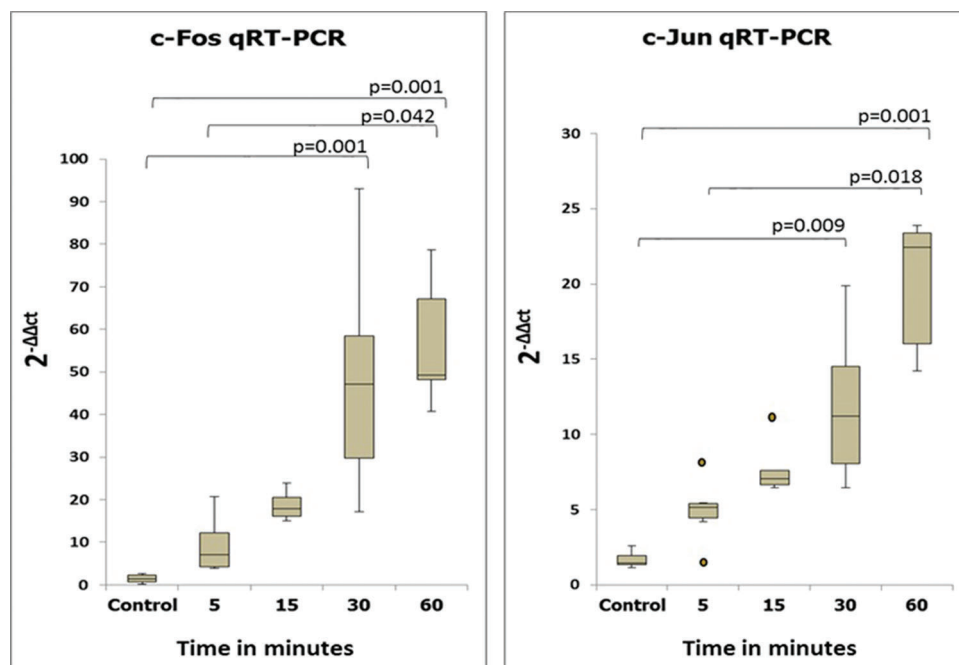
## DISCUSSION

In the present study, we investigated the expression of the IEGs *c-fos* and *c-jun* in a rat I/R model in which the intestine was perfused with lactated Ringer's solution at 4°C. The intestine was kept cool *in situ* during ischemia. In addition, markers of cell proliferation and apoptosis were investigated in intestinal samples harvested at the time point of maximal IEG expression. Two analysis methods, semiquantitative and quantitative PCR, were utilized in the current investigation to provide a better estimation of the results. The expression levels of both genes coincided, in agreement with previous results of investigations performed in our laboratory (12).

A previous study of IEGs in a pig liver I/R model during the acute stage, i.e., 1-3 h after reperfusion, suggested that *c-fos* and *c-jun* participate in both tissue regeneration and apoptosis (8). The same study showed that the duration of cold ischemia for liver preservation and the levels of oxygen free radicals are associated with the expression of IEGs (8). Taguchi et al. investigated the expression of *c-fos* and *c-jun* in a rat model of intestinal transplantation. These authors reported a lack of gene activity during the first 30 min after transplantation. They found that at 4 h after transplantation, *c-fos* only began to be expressed and *c-jun* exhibited little activity. However, at 72 h after transplantation, the expression of both genes was not detectable. These authors concluded that *c-fos* and *c-jun* are associated with the adaptive process of intestinal transplantation (13). The results of our study are similar, showing that these two



**Figure 2** - The sequential expression patterns of *c-fos* and *c-jun* mRNA (semiquantitative method) and images of the respective bands. The numbers in the vertical axis correspond to the relative expression levels normalized to the internal control gene (*β-actin*).

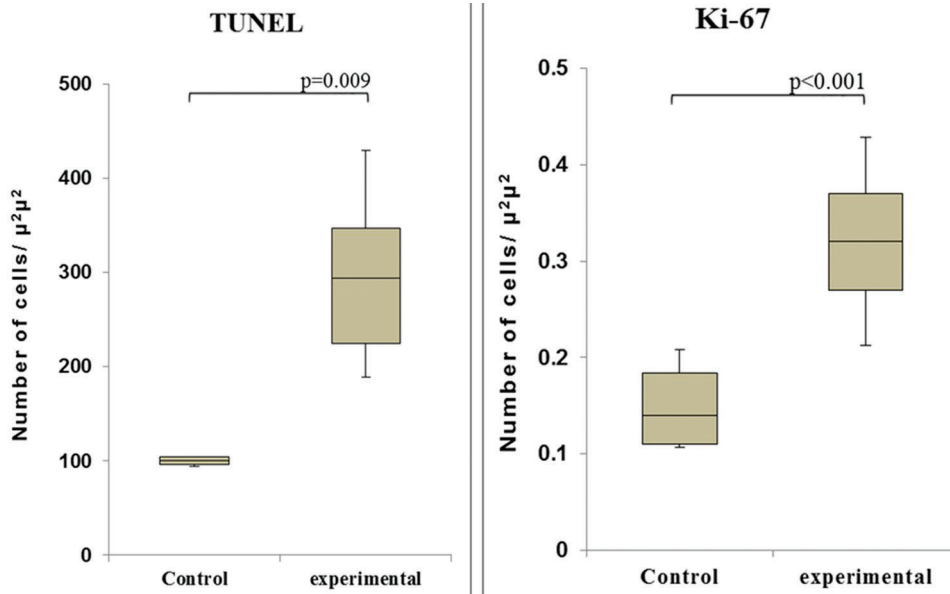


**Figure 3** - The sequential expression patterns of *c-fos* and *c-jun* mRNA (quantitative method). Note that these results are similar to those obtained using the semiquantitative method.

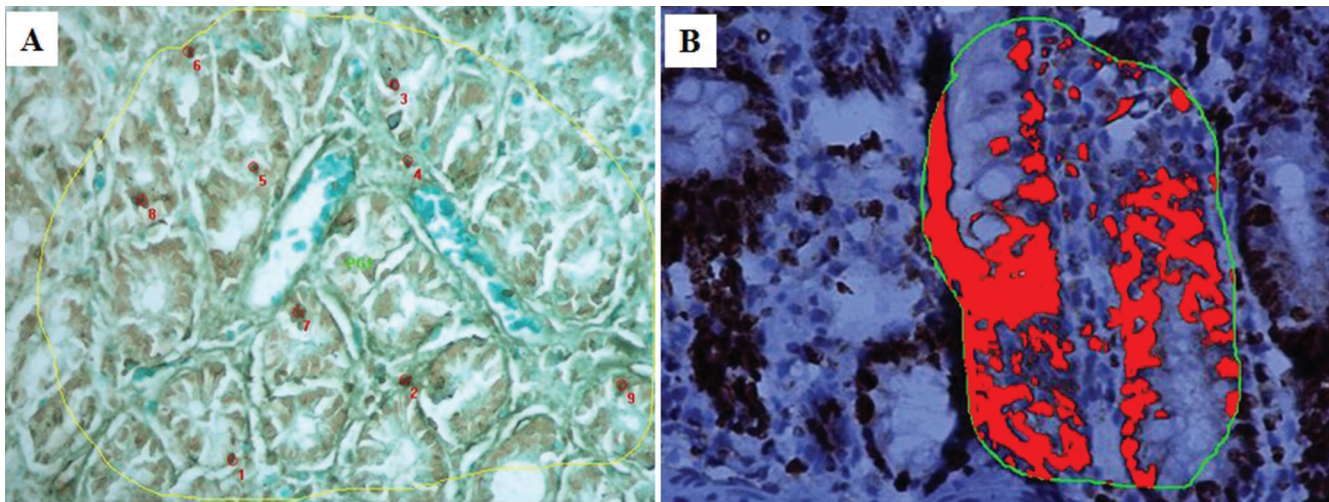
IEGs are expressed early. However, our measurements were performed earlier and at shorter intervals within the first hour after reperfusion. The *c-fos* and *c-jun* expression levels in our samples began to increase at 5 min, and this alteration was maintained at 60 min, in contrast to the observations of the aforementioned previous study.

Shima et al. studied the expression of *c-fos* and *c-jun* in rat intestines after I/R (4) and found that apoptosis and cell

proliferation depend on their expression, similar to the conclusions of other studies (8,14). The authors further suggested that the joint expression of these IEGs results in the induction of cell proliferation and apoptosis after I/R. Shima et al. proposed a more specific correlation between the roles of *c-fos* and *c-jun* after I/R in which *c-fos* induces cell proliferation and *c-jun* is a key factor involved in apoptosis (4). In the present study, the early expression of *c-fos* and



**Figure 4** - The numbers of apoptotic cells (left - TUNEL assay) and proliferating cells (right - Ki-67 staining) in the control and I/R-injured groups (60 min after reperfusion).



**Figure 5** - Immunohistochemical analyses of TUNEL (A) and Ki-67 (B) staining at 60 min after reperfusion. Note the increased numbers of positively stained cells at this time point compared to the control.

*c-jun* indicated that these inducers of apoptosis and cell proliferation had been activated by I/R. We sought to understand and to establish the correlation between these genetic phenomena and the immunohistochemical markers of apoptosis (by TUNEL staining) and cell proliferation (by Ki-67 staining).

Immunohistochemical analysis via the TUNEL assay revealed a statistically significant increase in the number of apoptotic cells at 60 min after I/R in the I/R-injured cecum compared with the control cecum, indicating that the induction of apoptosis, but not necrosis, occurred early (15). This finding is in agreement with reports in the literature showing that apoptotic cells appear several minutes after stimulation and that the full sequence of apoptosis is completed within 1-4 h (16). We also found a statistically significant difference in the number of

proliferating cells at 60 min after reperfusion, as demonstrated by the increased expression of Ki-67. Thus, the IEGs *c-fos* and *c-jun* together may be responsible for cell proliferation and apoptosis. The major questions that remain to be answered concern the exact time at which these phenomena occur and whether it is possible to control apoptosis to improve the preservation of intestinal grafts. Our results showed that cold graft preservation was not sufficiently protective because the IEGs were induced quite early after reperfusion. Oxygen free radicals are likely an important trigger of the expression of IEGs, and these species may also play definitive roles in cold ischemic graft preservation; however, these possibilities require further study. In conclusion, the early activation of the *c-fos* and *c-jun* genes occurred after intestinal I/R injury, and these genes together can trigger cell proliferation and apoptosis.



## ■ AUTHOR CONTRIBUTIONS

Santos MM and Tannuri AC performed the experiments. Coelho MC, Gonçalves JO, Serafini S and Silva LF performed the laboratory analysis. Tannuri U revised the manuscript.

## ■ REFERENCES

- Haglund U. Gut ischaemia. *Gut*. 1994;35(1 Suppl):S73-6.
- Santos MM, Tannuri U, Tannuri AC, Coelho MC. Description of a new model of intestinal denervation and *in situ* ischemia-reperfusion injury using the cecal artery for perfusion. *Transplant Proc*. 2009;41(9):3617-21, <http://dx.doi.org/10.1016/j.transproceed.2009.05.037>.
- Ikeda H, Suzuki Y, Suzuki M, Koike M, Tamura J, Tong J, et al. Apoptosis is a major mode of cell death caused by ischaemia and ischaemia/reperfusion injury to the rat intestinal epithelium. *Gut*. 1998;42(4):530-7, <http://dx.doi.org/10.1136/gut.42.4.530>.
- Shima Y, Tajiri T, Taguchi T, Suita S. Increased expression of c-fos and c-jun in the rat small intestinal epithelium after ischemia-reperfusion injury: a possible correlation with the proliferation or apoptosis of intestinal epithelial cells. *J Pediatr Surg*. 2006;41(4):830-6, <http://dx.doi.org/10.1016/j.jpedsurg.2005.12.025>.
- Huppertz B, Frank HG, Kaufmann P. The apoptosis cascade--morphological and immunohistochemical methods for its visualization. *Anat Embryol (Berl)*. 1999;200(1):1-18.
- Shah KA, Shurey S, Green CJ. Characterization of apoptosis in intestinal ischaemia-reperfusion injury--a light and electron microscopic study. *Int J Exp Pathol*. 1997;78(5):355-63, <http://dx.doi.org/10.1046/j.1365-2613.1997.420369.x>.
- Pasternak BA, Collins MH, Tiao GM, Rudolph JA, Alonso MH, Ryckman FC, et al. Anatomic and histologic variability of epithelial apoptosis in small bowel transplants. *Pediatr Transplant*. 2010;14(1):72-6, <http://dx.doi.org/10.1111/ptr.2009.14.issue-1>.
- Wieland E, Oellerich M, Braun F, Schtuz E. c-fos and c-jun mRNA expression in a pig liver model of ischemia/reperfusion: effect of extended cold storage and the antioxidant idebenone. *Clin Biochem*. 2000;33(4):285-90, [http://dx.doi.org/10.1016/S0009-9120\(00\)00070-9](http://dx.doi.org/10.1016/S0009-9120(00)00070-9).
- Hassoun HT, Fischer UM, Attuwaybi BO, Moore FA, Safi HJ, Allen SJ, et al. Regional hypothermia reduces mucosal NFkappaB and PMN priming via gut lymph during canine mesenteric ischemia/reperfusion. *J Surg Res*. 2003;115(1):121-6, [http://dx.doi.org/10.1016/S0022-4804\(03\)00298-1](http://dx.doi.org/10.1016/S0022-4804(03)00298-1).
- Attuwaybi BO, Hassoun HT, Zou L, Kozar RA, Kone BC, Weisbrodt NW, et al. Hypothermia protects against gut ischemia/reperfusion-induced impaired intestinal transit by inducing heme oxygenase-1. *J Surg Res*. 2003;115(1):48-55, [http://dx.doi.org/10.1016/S0022-4804\(03\)00313-5](http://dx.doi.org/10.1016/S0022-4804(03)00313-5).
- Livak KJ, Schmittgen TD. Analysis of relative gene expression data using real-time quantitative PCR and the 2<sup>-</sup>(Delta Delta C(T)) Method. *Methods*. 2001;25(4):402-8, <http://dx.doi.org/10.1006/meth.2001.1262>.
- Gonçalves JO, Tannuri AC, Coelho MC, Bendit I, Tannuri U. Dynamic expression of desmin,  $\alpha$ -SMA and TGF- $\beta$ 1 during hepatic fibrogenesis induced by selective bile duct ligation in young rats. *Braz J Med Biol Res*. 2014;47(10):850-7.
- Taguchi T, Fujii Y, Nakao M, Ogita K, Shima Y, Suita S. Expression of immediate-early genes c-fos and c-jun in small intestinal transplantation. *Transplant Proc*. 2000;32(6):1279, [http://dx.doi.org/10.1016/S0041-1345\(00\)01224-0](http://dx.doi.org/10.1016/S0041-1345(00)01224-0).
- Onishi I, Shimizu K, Tani T, Hashimoto T, Miwa K. JNK activation and apoptosis during ischemia-reperfusion. *Transplant Proc*. 1999;31(1-2):1077-9, [http://dx.doi.org/10.1016/S0041-1345\(98\)01912-5](http://dx.doi.org/10.1016/S0041-1345(98)01912-5).
- Li Y, Arita Y, Koo HC, Davis JM, Kazzaz JA. Inhibition of c-jun N-terminal kinase pathway improves cell viability in response to oxidant injury. *Am J Respir Cell Mol Biol*. 2003;29(6):779-83, <http://dx.doi.org/10.1165/rcmb.2003-0087RC>.
- Noda T, Iwakiri R, Fujimoto K, Matsuo S, Aw TY. Programmed cell death induced by ischemia-reperfusion in rat intestinal mucosa. *Am J Physiol*. 1998;274(2 Pt 1):G270-6.