

Expression of galectin-1 in carcinoma-associated fibroblasts promotes gastric cancer cell invasion through upregulation of integrin β 1

Xu-Jun He,^{1,2} Hou-Quan Tao,² Zhi-Ming Hu,³ Ying-Yu Ma,² Ji Xu,⁴ Hui-Ju Wang,² Ying-Jie Xia,² Li Li,² Bao-Ying Fei,⁵ Ya-Qing Li² and Jian-Zhong Chen¹

¹Institute of Immunology, School of Medicine, Zhejiang University, Hangzhou; ²Key Laboratory of Gastroenterology of Zhejiang Province, Zhejiang Provincial People's Hospital, Hangzhou; ³Department of Surgery, Haining No.3 People's Hospital, Haining; Departments of ⁴Gastrointestinal Surgery; ⁵Digestive Diseases, Zhejiang Provincial People's Hospital, Hangzhou, China

Key words

Carcinoma-associated fibroblasts, Gal-1, gastric cancer, integrin β 1, invasion

Correspondence

Jian-Zhong Chen, Institute of Immunology, School of Medicine, Zhejiang University, Hangzhou 310058, China. Tel: +86-571-88208286; Fax: +86-571-88208285; E-mail: chenjianzhong@zju.edu.cn

Funding Information

National Natural Science Foundation of China; Zhejiang Provincial Natural Science Foundation of China; Science and technology department of Zhejiang province; Science and Technology Committee of Haining; Health and Family planning commission of Zhejiang province.

Received April 5, 2014; Revised August 21, 2014; Accepted September 10, 2014

Cancer Sci 105 (2014) 1402–1410

doi: 10.1111/cas.12539

Increased expression of galectin-1 (Gal-1) in carcinoma-associated fibroblasts (CAFs) has been reported to correlate with progression and prognosis in many cancers. However, rarely have reports sought to determine whether high Gal-1 expression in CAFs in gastric cancer is involved in the tumor process, and the specific mechanism by which it promotes the evolution of gastric cancer is still unknown. In this study, we cultured gastric cancer CAFs, which showed strong expression of Gal-1, and established a co-culture system of CAFs with gastric cancer cells. Specific siRNA and *in vitro* migration and invasion assays were used to explore the effects of the interaction between Gal-1 expression of CAFs and gastric cancer cells on cell migration and invasion. We found that the overexpression of Gal-1 in CAFs enhanced gastric cancer cell migration and invasion, and these stimulatory effects could be blocked by specific siRNA which reduced the Gal-1 expression level. A set of cancer invasion-associated genes were then chosen to identify the possible mechanism of Gal-1-induced cell invasion. Among these genes, *integrin β 1* expression in cancer cells was considered to be associated with Gal-1 expression. Pre-blocking of the integrin β 1 expression in gastric cancer cells with siRNA could interrupt the invasion-promoting effect of CAFs with high Gal-1 expression. Furthermore, immunohistochemical assay confirmed a positive correlation between Gal-1 and integrin β 1 expression. Our results showed that high expression of Gal-1 in CAFs might facilitate gastric cancer cell migration and invasion by upregulating integrin β 1 expression in gastric cancer.

Gastric cancer is one of the most common cancers in the world and is the second-leading cause of cancer-related death worldwide with a particularly high frequency in China.^(1,2) Despite significant advances in surgical treatment that have proven effective for gastric cancers, a poor prognosis remains due to recurrence in the form of lymphatic spread, blood-borne metastasis, or peritoneal dissemination.^(3,4) Thus, the molecular pathogenesis of gastric cancer metastasis remains to be explored.

Substantial evidence indicates that the development and progression of cancer not only depends on genetic characteristics but also on interactions with a complex microenvironment, which includes the ECM, growth factors, cytokines, and a variety of non-tumor cell types, such as vascular-related cells, inflammatory cells, and fibroblasts. These features promote tumor progression and metastasis, resulting in a poor prognosis and greater resistance to therapy. The fibroblast is one of the most important cell types of the stroma in the microenvironment. It forms the basic architecture of the tissue, contributing to structural integrity and the main components of the ECM. In normal tissue, it carried out tissue repair under certain physiological conditions.⁽⁵⁾ But, as one of the important stromal

cells in solid tumors, carcinoma-associated fibroblasts (CAFs) differentiate into fibroblasts that express α -smooth muscle actin (α -SMA) and produce ECM proteins such as fibronectin, fibroblast activation protein (FAP), fibroblast secretory protein (FSP), and collagen.⁽⁶⁾ They play prominent roles in promoting tumor growth and progression.^(7–9) Carcinoma-associated fibroblasts have various effects on tumor progression, such as ECM degradation, release of soluble factors, regulation of tumor metabolism or tumor cell implantation, and promotion of cancer cell proliferation, migration, and metastasis.^(10–13) Clinical observations have documented that the accumulation of large numbers of CAFs in tumor stroma accelerates progression and metastasis.^(6,7,14,15) Thus, in-depth study of the mechanism by which CAFs contribute to tumor progression is necessary and targeting CAFs may be an adjuvant therapy that can improve clinical outcomes.

Galectins (Gals), formerly known as S-type lectins, belong to a family of carbohydrate-binding proteins with an affinity for β -galactosides and they mediate cell–cell or cell–extracellular component communication by binding to glycol-conjugated proteins on the cell surface.⁽¹⁶⁾ Thus, they carry out a series of biological functions including tissue development and

differentiation, regulation of immune responses, cell migration, apoptosis, and tumor progression.⁽¹⁷⁾ So far, 15 Gals have been identified and are classified into three types: proto-type (Gal-1, -2, -5, -7, -10, -11, -13, -14, and -15), chimera-type (Gal-3), and tandem repeat-type (Gal-4, -6, -8, -9, and -12).^(18,19) Galectin-1, the first protein in this family to be discovered, is a non-covalent dimer composed of subunits with one carbohydrate recognition domain and behaves as a monomer of 14.5 kDa that dimerizes under certain circumstances.

Increased Gal-1 expression had been reported in various tumor cells, CAFs, and capillary endothelial cells, and is involved in cell–cell and cell–matrix interactions.^(20–23) Increased expression of Gal-1 in CAFs correlates with the progression and prognosis of many cancers, such as colon cancer, gastric cancer, and oral squamous cell carcinoma.^(24–26) However, whether the increased expression of Gal-1 in CAFs affects tumor cell homeostasis, and the underlying molecular mechanism, is still unknown, especially in gastric cancer.

Rare reports have sought to determine whether high Gal-1 expression in CAFs in gastric cancer is involved in the tumor process or the specific mechanism by which it promotes the evolution of gastric cancer. Our study set out to isolate and culture gastric cancer CAFs and establish a co-culture system

for CAFs with gastric cancer cell lines. We aimed to investigate whether high Gal-1 expression in CAFs has any impact on the invasive or migratory behavior of gastric cancer cells and to explore its molecular mechanisms.

Materials and Methods

Cell lines. Gastric cell lines (AGS, BGC-823, 7901) were from the Shanghai Institute of Digestive Surgery (Shanghai, China) and cultured in RPMI-1640 containing 10% FBS, 50 U/mL penicillin, and 50 µg/mL streptomycin.

Primary cultures of CAFs and normal associated fibroblasts. Both CAFs and normal associated fibroblasts (NAFs) were isolated from gastric tumor tissues and adjacent normal mucosal tissue, respectively, using enzyme digestion. Tissue samples were obtained from surgery patients without radiotherapy or chemotherapy, and then were cut into 1 × 1-mm pieces. The pieces were incubated in enzyme digestion buffer (250 U/mL collagenase type I, 0.5% hyaluronidase in RPMI-1640 medium), horizontal shaken at 100 rpm for 2 h at 37°C, centrifuged at 1000 g for 10 min, and the supernatant was carefully discarded. The cell pellet was washed three times with serum-free RPMI-1640 and resuspended in RPMI-1640

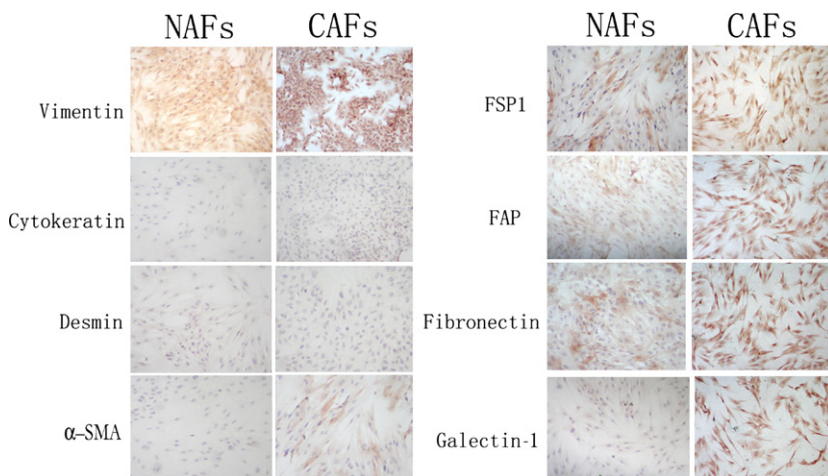
Table 1. Primers used in PCR analyses

Candidate gene	Primer sequence	Fragment size (bp)	Annealing temperature (°C)
<i>ITGB7</i> (NM_000889.1)	F: TCTTGGTGGAGGATGACG R: GAAAGCGAGGATTGATGGT	273	58
<i>ITGAV</i> (NM_001145000.1)	F: CAGCCACTACCCATCTCAAT R: TTCAAACCGCAACCAAC	195	55
<i>ITGB1</i> (NM_033668.2)	F: AAGACTATCCATTGACCTC R: TCCAGCAAAGTGAACCC	443	55
<i>ITGB8</i> (NM_002214.2)	F: CTGTTATCCCTACGCTTCCC R: CTGTTCTGTCTATTCAACCACC	173	55
<i>ITGB6</i> (NM_000888.3)	F: GAAGAAGTGGTCTGAGGT R: TTTTGGTGTGGAAGAGGGT	107	55
<i>ITGB3</i> (NM_000212.2)	F: GGAATAAGTGCCAGGATG R: TGATGCCAAGTGGGAGTG	276	58
<i>ITGB5</i> (NM_002213.3)	F: GGCTGTGGAGGTGAGATAG R: GTGCCGTGTAGGAGAAAG	364	55
<i>ITGA6</i> (NM_000210.2)	F: AGGGATTGTTCTGTAGAGC R: ACCACGCCACATCATAG	327	55
<i>ITGA4</i> (NM_000885.4)	F: GTAGCCCTAATGGAGAACCT R: TGCCACAAGTCACGATG	118	55
<i>ITGA1</i> (NM_181501.1)	F: TTGGTGGTGTGCCCTCTT R: GCATACTGTTTCCTTCCCTCC	125	55
<i>ITGA9</i> (NM_002207.2)	F: GAAGCCGACCACATCCTAC R: TGAAGAAGCCCCGTATCC	154	55
<i>ITGA2</i> (NM_002203.3)	F: CGACGAAGTGCTACGAAAG R: TACCCAAGAAGTCTATGC	131	56
<i>ITGAL</i> (NM_002209.2)	F: GGCACAAGCAAACAGGAC R: TCACGGTGTAACCCAAATAG	220	55
<i>ITGA3</i> (NM_002204.2)	F: TGGCAGACCTACCACAACG R: CTGGCTCAGCAAGAACACC	330	55
<i>GAPDH</i> (NM_002046.3)	F: TGAAGGTCGGAGTCAACGG R: CTGGAAGATGGTGATGGGATT	223	56

F, forward; *ITGA1*, *Homo sapiens* integrin, $\alpha 1$; *ITGA2*, *Homo sapiens* integrin, $\alpha 2$ (CD49B, $\alpha 2$ subunit of VLA-2 receptor); *ITGA3*, *Homo sapiens* integrin, $\alpha 3$ (antigen CD49C, $\alpha 3$ subunit of VLA-3 receptor); *ITGA6*, *Homo sapiens* integrin, $\alpha 6$; *ITGA4*, *Homo sapiens* integrin, $\alpha 4$ (antigen CD49D, $\alpha 4$ subunit of VLA-4 receptor); *ITGA9*, *Homo sapiens* integrin, $\alpha 9$; *ITGAL*, *Homo sapiens* integrin, αL (antigen CD11A (p180), lymphocyte function-associated antigen 1; α polypeptide); *ITGAV*, *Homo sapiens* integrin, αV (vitronectin receptor, α polypeptide, antigen CD51); *ITGB1*, *Homo sapiens* integrin, $\beta 1$ (fibronectin receptor, β polypeptide, antigen CD29 includes MDF2, MSK12); *ITGB3*, *Homo sapiens* integrin, $\beta 3$ (platelet glycoprotein IIIa, antigen CD61); *ITGB5*, *Homo sapiens* integrin, $\beta 5$; *ITGB6*, *Homo sapiens* integrin, $\beta 6$; *ITGB7*, *Homo sapiens* integrin, $\beta 7$; *ITGB8*, *Homo sapiens* integrin, $\beta 8$; R, reverse.

Table 2. Relationship between galectin 1 (Gal-1), integrin $\beta 1$, and clinicopathologic features in 94 gastric cancer patients

Groups	No. of cases	Cases positive for Gal-1, <i>n</i> (%)	<i>P</i> -value	Cases positive for integrin $\beta 1$, <i>n</i> (%)	<i>P</i> -value
Sex					
Male	59	34 (57.6)	0.438	27 (45.8)	0.061
Female	35	23 (65.7)		23 (65.7)	
Tumor diameter					
<5 cm	55	33 (60.0)	0.880	25 (45.5)	0.074
≥ 5 cm	39	24 (61.5)		25 (64.1)	
Differentiation					
Well	1	1 (100)	0.099	1 (100.0)	0.381
Moderate	27	12 (44.4)		12 (44.4)	
Poor	66	44 (66.7)		37 (56.1)	
Histological classification					
Papillary adenocarcinoma	5	2 (40.0)	0.611	1 (20.0)	0.300
Tubular adenocarcinoma	67	40 (59.7)		36 (53.7)	
Mucinous adenocarcinoma	5	4 (80.0)		4 (80.0)	
Signet-ring cell carcinoma	17	11 (64.7)		9 (52.9)	
Lymph node metastasis					
Yes	64	49 (76.6)	0.000	43 (67.2)	0.000
No	30	8 (26.7)		7 (23.3)	
Distant metastasis					
Yes	14	13 (92.9)	0.007	12 (85.7)	0.008
No	80	44 (55.0)		38 (47.5)	
TNM stage					
I + II	40	14 (35.0)	0.000	9 (22.5)	0.000
III + IV	54	43 (79.6)		41 (75.9)	

**Fig. 1.** Photomicrographs of carcinoma-associated fibroblasts (CAFs) and normal associated fibroblasts (NAFs) stained for vimentin, cytokeratin, α -smooth muscle actin (α -SMA), fibroblast activation protein (FAP), fibroblast secretory protein (FSP1), fibronectin, and galectin-1. Magnification, $\times 200$; phase contrast microscopy.

containing 20% FBS. Undigested pieces were filtered through a 200-mesh cell sieve, adjusted to approximately 5×10^6 cells per 6-cm cell culture dish, and incubated at 37°C in a 5% CO₂ incubator. All NGFs and CAFs were used at <10 passages.

Immunohistochemistry. The isolated NGFs and CAFs were further identified using ICC. Cells were seeded at 1×10^5 on slides in 6-well plates. After the cells adhered, the medium was discarded and the slides harvested for ICC staining. The slides were blocked with 3% (v/v) H₂O₂ for 10 min and 10% (v/v) normal goat serum for 15 min at room temperature. Then the slides were incubated with vimentin, cytokeratin, α -SMA, FAP, FSP, fibronectin, and Gal-1 primary antibodies at 4°C overnight. The HRP-conjugated secondary antibody (Zhongshan Biotech, Beijing, China) and 3'-diaminobenzidine

tetrahydrochloride were used to visualize signal development, and then the sections were counterstained with hematoxylin.

Small interfering RNA transfection. Galectin-1 siRNA-1 (sc-35441; Santa Cruz Biotechnology, Santa Cruz, CA, USA), Gal-1 siRNA-2 (SR302674; OriGene Technologies, Beijing, China), integrin $\beta 1$ siRNA-1 (sc-35674; Santa Cruz Biotechnology), and integrin $\beta 1$ siRNA-2 (sc-44310; Santa Cruz Biotechnology) mixed with transfection reagent (sc-29528; Santa Cruz Biotechnology) were used for transfection according to the manufacturer's instructions. To inhibit Gal-1 expression, CAFs in 6-well plates (2×10^5 per well) were transfected with Gal-1 siRNA-1 and siRNA-2; and to block integrin $\beta 1$, 2×10^5 gastric cancer cells per well were transfected with integrin $\beta 1$ siRNA-1 and siRNA-2. In both, scrambled siRNA

(sc-37007; Santa Cruz Biotechnology) was transfected as a negative control. After 24 h, cells were collected for experiments.

In vitro cell migration and invasion assays. In migration assays, 1×10^5 gastric cancer cells (BGC-823, 7901, and AGS) were plated (in triplicate) in the top chamber of a Transwell (3422; Millipore, Billerica, MA, USA) with a membrane containing 8- μm pores in 200 μL serum-free RPMI-1640. The inserts were then placed into the bottom chamber wells of a 24-well plate with or without 2×10^5 pre-cultured CAFs, control siRNA-transfected CAFs, or Gal-1 siRNA-transfected CAFs as attractants. After 24 h of incubation, cells remaining on the top layers of the inserts were removed by cotton swab scrubbing, and cells on the lower surface of the membrane were fixed and stained with H&E. The cell numbers in five random fields (200 \times) were counted for each chamber, and the average value was calculated.

In invasion assays, 2×10^5 gastric cancer cells (BGC-823, 7901, and AGS) were plated in the top chamber with Matrigel pre-coated membrane (ECM554; Millipore), while the bottom chambers of a 24-well plate had inserts with or without 2×10^5 pre-cultured CAFs, control siRNA-transfected CAFs, or Gal-1 siRNA-transfected CAFs as attractants. After 48 h of incubation, the cells (lower side of the membrane) were stained and the number calculated as above.

After real-time PCR and Western blot analysis, which suggested a correlation between Gal-1 and integrin $\beta 1$, Transwell invasion assays were carried out to test the effect of integrin $\beta 1$

siRNA on blocking the enhanced invasion induced by CAFs (high Gal-1 expression). First, the gastric cancer cells (BGC-823, 7901, AGS) were transfected with integrin $\beta 1$ siRNA-1 and siRNA-2 to block integrin $\beta 1$ expression, then the cells were collected and plated in the top chamber for Transwell invasion assay; the bottom chambers were pre-cultured with CAFs as the attractant. The method was as described above.

Candidate genes associated with Gal-1 induced cell invasion. Briefly, in a 6-well co-culture system (Millicell Cell Culture Insert, PIHP03050; Millipore), 4×10^5 CAFs with or without Gal-1 siRNA transfection were seeded in the lower chamber, while 2×10^5 gastric cancer cells (BGC-823 or 7901) were grown in the upper chamber; a membrane (0.4- μm pore size) permeable to liquids but not cells, was placed between the upper and lower chambers. After incubation at 37°C under 5% CO_2 for 48 h, the gastric cancer cells in the upper chamber were collected for real-time PCR and Western blotting.

Total RNA was extracted using TRIzol reagent (Invitrogen, NY, USA) and reverse-transcribed according to the instructions with the PrimeScript First Strand cDNA Synthesis kit (DRR047A; Takara, Dalian, China). Real-time PCR was carried out using the MX3000P system (Stratagene, La Jolla, CA, USA), using gene-specific primers with the SYBR Premix Ex-Taq kit (DRR042A; Takara). GAPDH was used as an internal control. The candidate primer pool is listed in Table 1. Initial denaturation (5 min at 95°C) was followed by 40 cycles of amplification at 95°C for 10 s, annealing time (Table 1) 20 s,

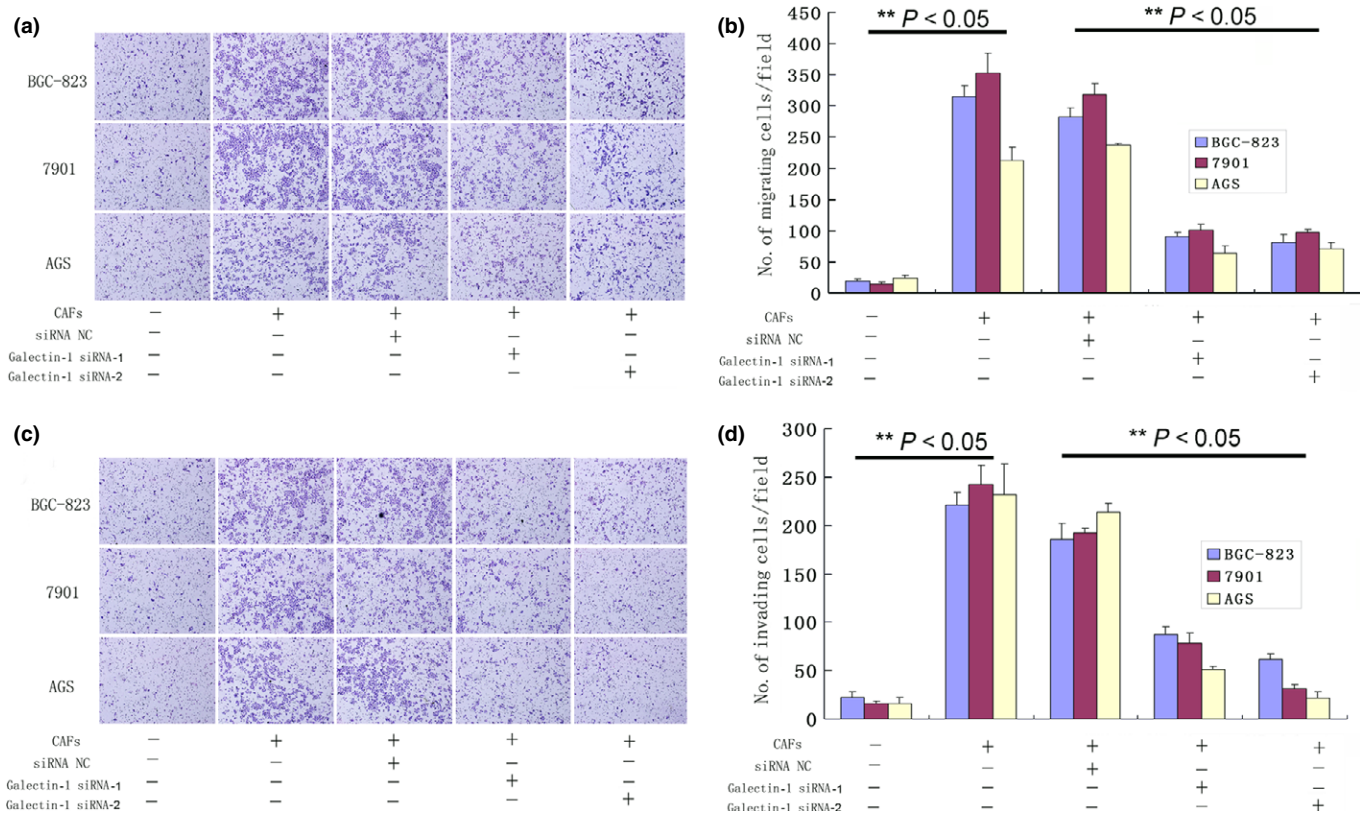


Fig. 2. Migration and invasion of gastric cancer cells is impacted by galectin-1 (Gal-1) expression in carcinoma-associated fibroblasts (CAFs). (a, b) CAF-treated cancer cells showed higher migration than untreated cells ($P < 0.05$), and this effect was inhibited by reducing the expression of Gal-1 in CAFs with Gal-1 siRNA-1 and siRNA-2 compared with the normal control (NC) siRNA-treated group ($P < 0.05$). (c, d) CAF-treated cancer cells showed higher invasiveness than untreated cells ($P < 0.05$), and this effect was inhibited by reducing the Gal-1 expression as in (a) and (b). (a, c) Magnification, $\times 200$.

and 72°C for 20 s. Melting curve analysis was carried out at the end of the PCR cycles. The relative expression levels were calculated using the $2^{-\Delta C_t}$ method.

Total protein was extracted using RIPA lysis buffer and fractionated on SDS-PAGE. The proteins were electrotransferred onto PVDF membranes using the semidry transfer method. The membranes were blocked with 5% BSA for 2 h, then incubated overnight with primary antibodies at 4°C. The primary antibodies were anti-Gal-1 (1:1000, G7420; Sigma, St. Louis, MO, USA) and anti-integrin $\beta 1$ (1:1000, #9699; Cell Signaling Technology, Danvers, MA, USA). After incubation with secondary antibody (1:5000; Huaan Biotech, Hangzhou, China) for 2 h, the membranes were treated with electrochemiluminescence reagent (Generay, Shanghai, China) and exposed to autoradiographic film.

Immunohistochemical staining and evaluation. Ninety-four paraffin gastric cancer specimens were acquired from Zhejiang Provincial People's Hospital (Hangzhou, China), having been collected between January 2001 and December 2004. All cases were classified according to the World Health Organization Pathological Classification of Tumors in 2010. The characteristics of the 94 patients are summarized in Table 2. None of the patients had received any radiotherapy or chemotherapy in advance of the operation. Specimens were fixed in formalin and embedded in paraffin. The project was approved by the Ethics Committee of Zhejiang Provincial People's Hospital.

The sections were deparaffinized and rehydrated in graded ethanols. Antigen retrieval was carried out by autoclaving for

3 min in 0.01 M citrate buffer (pH 7.4). After retrieval, the sections were blocked with 3% (v/v) H_2O_2 for 10 min and 10% (v/v) normal goat serum for 15 min at room temperature. Then the sections were incubated with primary antibodies at 4°C overnight (anti-integrin $\beta 1$ [1:400, #9699; Cell Signaling Technology] and anti-Gal-1 (1:250, #6837-1; Epitomics, Burlingame, CA, USA)). Then the sections were incubated with HRP-conjugated secondary antibody (Zhongshan Biotech) for 20 min at room temperature. Finally, 3'-diaminobenzidine tetrahydrochloride was used to visualize the signal development, and then the sections were counterstained with hematoxylin.

The immunohistochemical evaluation was independently carried out by two pathologists without knowledge of the clinical data. The immunoreactivity levels of each case were estimated under a light microscope by assessing the average signal intensity (on a scale of 0–3) and the proportion of cells showing positive staining (0, <5%; 1, 5–25%; 2, 26–50%; 3, 51–75%; 4, 76–100%). The intensity and proportion scores were then multiplied to obtain a composite score; 0–3 was defined as negative and 4–12 as positive.

Statistical analysis. All statistical analyses were carried out using SPSS version 13.0 (SPSS, Chicago, IL, USA). For *in vitro* experiments, independent samples *t*-tests were used to analyze the significance of differences between the control and treatment groups. Categorical data were assessed using Chi-square or Fisher's exact tests. Spearman's ρ -test was used to assess the correlation between integrin $\beta 1$ and Gal-1 staining. Survival curves were estimated using the Kaplan–Meier method, and the log-rank test was used to calculate differences

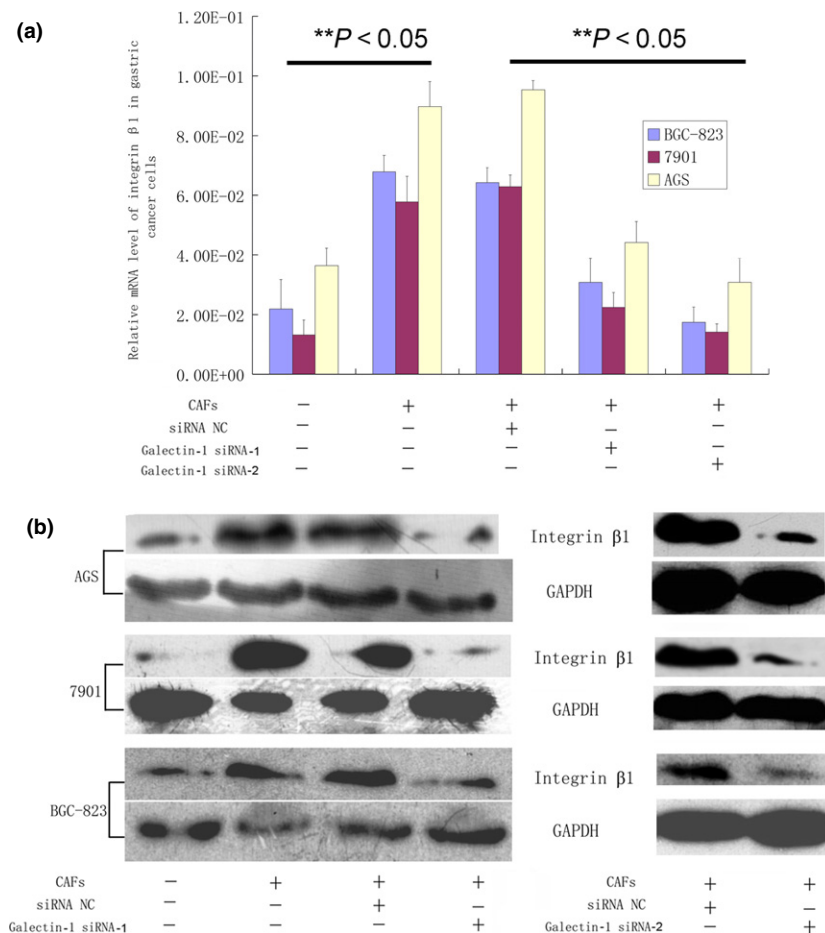


Fig. 3. Candidate genes associated with galectin-1-induced cell migration and invasion. Integrin $\beta 1$ was elevated at both the mRNA and protein level when gastric cancer cells were co-cultured with carcinoma-associated fibroblasts (CAFs), and this was markedly reduced when the CAFs were pre-transfected with galectin-1 siRNA-1 and siRNA-2. (a) Real-time PCR results. (b) Western blotting results.

between the curves. A P -value of <0.05 was considered statistically significant.

Result

Identification of primary cultured cells and Gal-1 expression in CAFs. Although we could not distinguish the two types of cells under the light microscope (Fig. S1) as both were long and spindle-shaped and with spiral growth, we did identify differences between CAFs and NAFs using molecular markers and ICC staining (Fig. 1). Both in NGFs and CAFs, vimentin was strongly expressed but no cytokeratin was detected, whereas α -SMA was expressed in CAFs, but not in NGFs. The FSP, FAP, and fibronectin expression was increased in CAFs compared with NAFs. Gal-1 was strongly expressed in CAFs, but not or only a weak signal was detected in NAFs (Fig. 1).

High Gal-1 expression in CAFs promotes cell migration and invasion. In the migration and invasion assays, BGC-823, 7901, and AGS cells co-cultured with CAFs for 24 h showed increased numbers of migrating cells ($P < 0.05$ compared with controls; Fig. 2). Reducing the expression of Gal-1 in CAFs with Gal-1 siRNAs inhibited this effect (Fig. 2). These results indicate that overexpression of Gal-1 in CAFs contributes to gastric cancer cell migration and invasion.

Candidate genes associated with Gal-1-induced cell migration and invasion. In order to identify genes associated with Gal-1-induced cell invasion in gastric cancer, a set of cancer invasion-associated primers were investigated by real-time PCR screening. Among these genes, the expression levels of *integrin β 1* in cancer cells were considered to occur through upregulation of Gal-1 expression. Compared with gastric cancer cells co-cultured with CAFs with low Gal-1 expression (treated with Gal-1 siRNAs), the expression level of integrin β 1 was remarkably elevated in those co-cultured with CAFs with high Gal-1 expression (treated with control siRNA), both at the mRNA and protein levels (Fig. 3). There were no differences in the expression of *ITGB7*, *ITGAV*, *ITGB8*, *ITGB6*, *ITGB3*, *ITGB5*, *ITGA6*, *ITGA4*, *ITGA1*, *ITGA9*, *ITGA2*, *ITGAL*, or *ITGA3* (data not shown). We further tested the involvement of integrin β 1 in the CAF-induced enhanced invasiveness of human gastric cancer cells. Integrin β 1 siRNA was used to block its expression in gastric cancer cells, and we found that pretreatment of 7901, BGC-823, and AGS cells with integrin β 1 siRNA significantly reduced the enhanced the invasive potential induced by CAFs (Fig. 4).

Taken together, these results suggest that high expression levels of Gal-1 in CAFs enhance the invasive and migratory ability of human gastric cancer cells. This may be achieved by upregulating the expression level of integrin β 1 in these cells. Furthermore, the blockade of integrin β 1 expression in the cells blocked these effects.

Correlation between Gal-1 and integrin β 1 expression in gastric cancer and survival analysis. To confirm the correlation between Gal-1 and integrin β 1 expression, immunohistochemistry was carried out in 94 gastric cancer samples. Integrin β 1 protein showed membranous staining in most cancer cells, but Gal-1 was found to be strongly expressed in CAFs and a negative reaction in tumor cells (Fig. 5). Integrin β 1 expression was positive in 50 of 94 tumor samples (53.2%) and Gal-1 in 57 of 94 (60.6%). Integrin β 1 and Gal-1 expression and staining intensity were significantly associated with lymph node metastasis, distant metastasis, and TNM stage of the clinicopathological parameters (Table 2). Spearman's ρ -test gave a positive

correlation between the levels of Gal-1 and integrin β 1 ($R = 0.51$, $P = 0.001$; Table 3).

Kaplan–Meier analysis indicated a significant impact on patient survival of integrin β 1 staining intensity in tumor cells

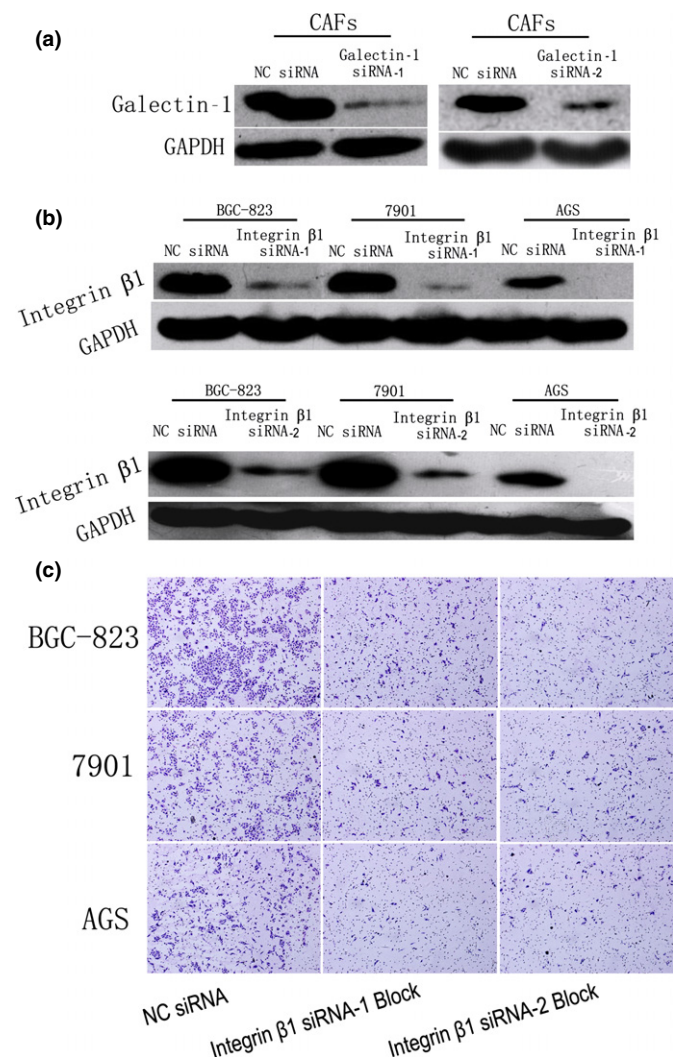


Fig. 4. Validation of siRNA transfection efficiency and the involvement of integrin β 1 in the enhanced invasion of human gastric cancer cells induced by carcinoma-associated fibroblasts (CAFs). (a) Western blot validation of the transfection efficiency of galectin-1 siRNA-1 and siRNA-2 in CAFs. (b) Western blot validation of the transfection efficiency of integrin β 1 siRNA-1 and siRNA-2 in gastric cancer cells. (c) Pre-blockade of integrin β 1 expression in gastric cancer cells by siRNA-1 and siRNA-2 interrupted the invasion-promoting effect of CAFs that highly express galectin-1. NC, normal control. Magnification, $\times 200$.

Table 3. Correlation between galectin-1 (Gal-1) and integrin β 1 expression in 94 gastric cancer patients

		Integrin β 1 expression		Spearman's ρ -test	
		Integrin β 1 (-)	Integrin β 1 (+)	R-value	P-value
Gal-1 expression	Gal-1 (-)	29	8	0.510	0.000
	Gal-1 (+)	15	42		

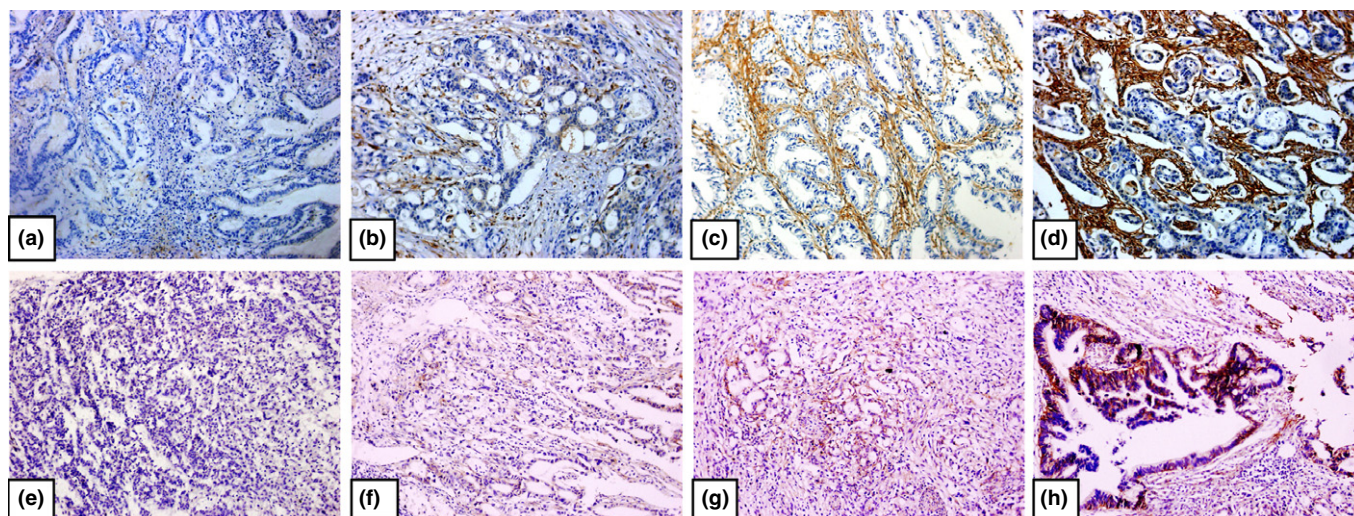


Fig. 5. Immunohistochemical staining for galectin-1 (a–d) and integrin $\beta 1$ (e–h) in gastric cancer tissues. Negative (a), weak (b), moderate (c), and strong (d) galectin-1 staining. Negative (e), weak (f), moderate (g), and strong (h) integrin $\beta 1$ staining. Original magnification, $\times 200$.

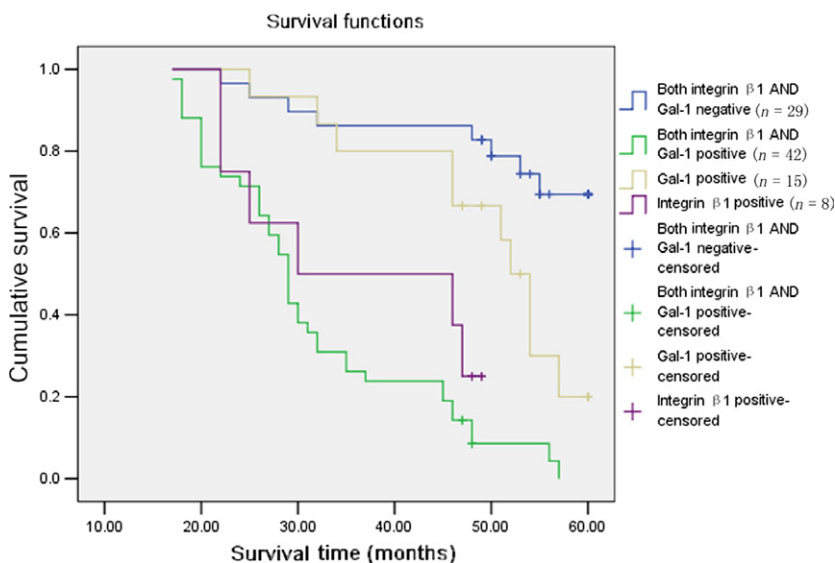


Fig. 6. Kaplan–Meier survival curves of galectin-1 (Gal-1) and integrin $\beta 1$ expression in gastric cancer patients. Cumulative 5-year survival rate.

and Gal-1 staining intensity in CAFs. Cases with both strong cytoplasmic integrin $\beta 1$ intensity in cancer cells and strong Gal-1 intensity in CAFs showed a shortened mean survival time (31.7 ± 1.8 month) compared to cases with single integrin $\beta 1$ -positive (36.3 ± 4.2 month) and Gal-1-positive (49.3 ± 2.7 month) or double-negative stained samples (54.1 ± 2.1 month, $P < 0.05$; Fig. 6).

Discussion

Increasing attention is being paid to the tumor microenvironment, where tumor cells closely interact with the surrounding vascular endothelial cells, inflammatory cells, fibroblasts, and other ECM components. These interactions induce a variety of changes in stromal cells, including the abnormal production of many growth factors, chemokines, angiogenesis, and ECM proteins, which together form a suitable tumor microenvironment. Under the effects of exogenous stimulating factors, a series of signaling pathways associated with tumor progression and

metastasis are abnormally activated. Then the tumor cells express many malignant changes, such as rapid proliferation, local adhesion, invasion, and distant metastasis.^(27,28) Galectin-1, a secretory protein that is overexpressed in CAFs, plays a prominent role in promoting tumor growth and progression,^(24–26) and patients with high Gal-1 expression have a poor prognosis. These studies only focused on the relationship between Gal-1 expression and cancer progression and prognosis, whereas a precise model of the interaction between the cancer microenvironment, CAFs and cancer cells is still unknown. In particular, the reasons why Gal-1 was highly expressed in CAFs and how it influenced tumor cells was still not clear. In this study, we co-cultured CAFs that have high Gal-1 expression with gastric cancer cells and found that the overexpression of Gal-1 in CAFs enhanced gastric cancer cell migration and invasion, and these stimulatory effects were blocked by siRNA that reduce the Gal-1 expression level. These findings indicated that the expression of Gal-1 in CAFs promotes gastric cancer cell migration and invasion.

In humans, integrins have 18 α -subunits and 8 β -subunits and can form 24 different combinations.⁽²⁹⁾ High integrin expression is associated with the progression of epithelial malignancies, particularly during invasion, metastasis, and angiogenesis, and adhesion to the ECM.^(30,31) Adhesion to the ECM is an essential step for cancer cell survival and growth in distant locations during metastasis. During this step, integrins are major regulatory molecules that provide a scaffold linking the ECM to the actin cytoskeleton, respond to tumor environmental cues (such as growth factors, chemokines, angiogenic factors secreted by vascular-related cells, inflammatory cells, and CAFs), and then transmit the external signals to cancer cells.^(29,32,33) Integrin $\beta 1$ has broad functional activities in cancer such as proliferation, adhesion, and invasion, and its knockdown inhibits colony formation, invasion, and migration.^(34–37) Recent reports have implied that integrin $\beta 1$ expression causes therapeutic resistance in several solid cancer models.^(38,39) Morello *et al.*⁽⁴⁰⁾ indicated that integrin $\beta 1$ is an essential regulator of epidermal growth factor receptor signaling and affects the tumorigenic properties of lung cancer cells by inducing active proliferation and metastasis. Moiseeva *et al.*⁽⁴¹⁾ revealed that Gal-1 probably affects vascular smooth muscle cell adhesion, migration, and proliferation by direct binding to integrin $\beta 1$ on the cell surface. In this study, we used real-time PCR and Western blotting to analyze several candidate genes that may be associated with cancer invasion and Gal-1 expression, and obtained results similar to those of Moiseeva *et al.*⁽⁴¹⁾ Among these candidate genes, using siRNAs we found that the expression level of integrin $\beta 1$ was remarkably elevated in gastric cancer cells co-cultured with CAFs expressing high Gal-1 compared to those with low Gal-1 expression CAFs. That is, the Gal-1 overexpression in CAFs

may be through the upregulation of the expression level of integrin $\beta 1$ in cancer cells. Pre-blocking the integrin $\beta 1$ expression in gastric cancer cells with siRNA interrupted the invasion-promoting effect of CAFs with high Gal-1 expression. Furthermore, immunohistochemistry confirmed a positive correlation between Gal-1 and integrin $\beta 1$ expression; patients with positive expression of both Gal-1 and integrin $\beta 1$ had shorter survival times than those with double-negative or single-positive results.

In conclusion, our results showed that overexpression of Gal-1 in CAFs promotes the invasiveness of gastric cancer cells *in vitro* and integrin $\beta 1$ is closely involved in this invasive promotion. Investigation of these signaling pathways (Gal-1/integrin $\beta 1$ axis) will further improve our understanding of the molecular mechanisms underlying gastric cancer progression, and help develop novel techniques for its treatment.

Acknowledgments

This work was supported by the National Key Basic Research Program of China (Grant No. 2014CB542101), the National Natural Science Foundation of China (Grant Nos. 81071991, 81372598, and 81000016), Zhejiang Provincial Natural Science Foundation of China (Grant No. LY14H160039), Zhejiang Provincial Program for the Cultivation of High-level Innovative Health Talents, Science and Technology Plan of Haining Science Committee (Grant No. 20121213), Medicine and Health Research Foundation of Zhejiang Province (Grant Nos. 2013KYB022, 2013KYB017, and 2011KYA016).

Disclosure Statement

The authors have no conflict of interest.

References

- Anderson C, Nijagal A, Kim J. Molecular markers for gastric adenocarcinoma: an update. *Mol Diagn Ther* 2006; **10**: 345–52.
- Jemal A, Center MM, DeSantis C, Ward EM. Global patterns of cancer incidence and mortality rates and trends. *Cancer Epidemiol Biomarkers Prev* 2010; **19**: 1893–907.
- Feng XY, Chen YB, Wang W *et al.* Time-varying pattern of recurrence risk for gastric cancer patients. *Med Oncol* 2013; **30**: 514.
- Park JM, Song KY, O JH, Kim WC, Choi MG, Park CH. Bone recurrence after curative resection of gastric cancer. *Gastric Cancer* 2013; **16**: 362–9.
- Desmouliere A, Darby IA, Gabbiani G. Normal and pathologic soft tissue remodeling: role of the myofibroblast, with special emphasis on liver and kidney fibrosis. *Lab Invest* 2003; **83**: 1689–707.
- Herrera M, Islam AB, Herrera A *et al.* Functional heterogeneity of cancer-associated fibroblasts from human colon tumors shows specific prognostic gene expression signature. *Clin Cancer Res* 2013; **19**: 5914–26.
- Kalluri R, Zeisberg M. Fibroblasts in cancer. *Nat Rev Cancer* 2006; **6**: 392–401.
- Bhowmick NA, Neilson EG, Moses HL. Stromal fibroblasts in cancer initiation and progression. *Nature* 2004; **432**: 332–7.
- Li H, Fan X, Houghton J. Tumor microenvironment: the role of the tumor stroma in cancer. *J Cell Biochem* 2007; **101**: 805–15.
- Bissell MJ, Radisky D. Putting tumours in context. *Nat Rev Cancer* 2001; **1**: 46–54.
- Dabbous MK, Haney L, Carter LM, Paul AK, Reger J. Heterogeneity of fibroblast response in host-tumor cell-cell interactions in metastatic tumors. *J Cell Biochem* 1987; **35**: 333–44.
- Orimo A, Weinberg RA. Stromal fibroblasts in cancer: a novel tumor-promoting cell type. *Cell Cycle* 2006; **5**: 1597–601.
- Gout S, Huot J. Role of cancer microenvironment in metastasis: focus on colon cancer. *Cancer Microenviron* 2008; **1**: 69–83.
- Zhi K, Shen X, Zhang H, Bi J. Cancer-associated fibroblasts are positively correlated with metastatic potential of human gastric cancers. *J Exp Clin Cancer Res* 2010; **29**: 66.

- Bello IO, Vered M, Dayan D *et al.* Cancer-associated fibroblasts, a parameter of the tumor microenvironment, overcomes carcinoma-associated parameters in the prognosis of patients with mobile tongue cancer. *Oral Oncol* 2011; **47**: 33–8.
- Barondes SH, Castronovo V, Cooper DN *et al.* Galectins: a family of animal beta-galactoside-binding lectins. *Cell* 1994; **76**: 597–8.
- Yang RY, Rabinovich GA, Liu FT. Galectins: structure, function and therapeutic potential. *Expert Rev Mol Med* 2008; **10**: e17.
- Ito K, Stannard K, Gabutero E *et al.* Galectin-1 as a potent target for cancer therapy: role in the tumor microenvironment. *Cancer Metastasis Rev* 2012; **31**: 763–78.
- Balan V, Nangia-Makker P, Raz A. Galectins as cancer biomarkers. *Cancers (Basel)* 2010; **2**: 592–610.
- Satelli A, Rao PS, Gupta PK, Lockman PR, Srivenugopal KS, Rao US. Varied expression and localization of multiple galectins in different cancer cell lines. *Oncol Rep* 2008; **19**: 587–94.
- Thijssen VL, Hulsmans S, Griffioen AW. The galectin profile of the endothelium: altered expression and localization in activated and tumor endothelial cells. *Am J Pathol* 2008; **172**: 545–53.
- Jung EJ, Moon HG, Cho BI *et al.* Galectin-1 expression in cancer-associated stromal cells correlates tumor invasiveness and tumor progression in breast cancer. *Int J Cancer* 2007; **120**: 2331–8.
- Claussie N, van den Brule F, Waltregny D, Garnier F, Castronovo V. Galectin-1 expression in prostate tumor-associated capillary endothelial cells is increased by prostate carcinoma cells and modulates heterotypic cell-cell adhesion. *Angiogenesis* 1999; **3**: 317–25.
- Nagy N, Legendre H, Engels O *et al.* Refined prognostic evaluation in colon carcinoma using immunohistochemical galectin fingerprinting. *Cancer* 2003; **97**: 1849–58.
- Bektas S, Bahadir B, Ucan BH, Ozdamar SO. CD24 and galectin-1 expressions in gastric adenocarcinoma and clinicopathologic significance. *Pathol Oncol Res* 2010; **16**: 569–77.
- Wu MH, Hong HC, Hong TM, Chiang WF, Jin YT, Chen YL. Targeting galectin-1 in carcinoma-associated fibroblasts inhibits oral squamous cell

- carcinoma metastasis by downregulating MCP-1/CCL2 expression. *Clin Cancer Res* 2011; **17**: 1306–16.
- 27 Mbeunkui F, Johann DJ Jr. Cancer and the tumor microenvironment: a review of an essential relationship. *Cancer Chemother Pharmacol* 2009; **63**: 571–82.
- 28 Lorusso G, Ruegg C. The tumor microenvironment and its contribution to tumor evolution toward metastasis. *Histochem Cell Biol* 2008; **130**: 1091–103.
- 29 Guo W, Giancotti FG. Integrin signalling during tumour progression. *Nat Rev Mol Cell Biol* 2004; **5**: 816–26.
- 30 Foubert P, Varner JA. Integrins in tumor angiogenesis and lymphangiogenesis. *Methods Mol Biol* 2012; **757**: 471–86.
- 31 Tchaicha JH, Reyes SB, Shin J, Hossain MG, Lang FF, McCarty JH. Glioblastoma angiogenesis and tumor cell invasiveness are differentially regulated by $\beta 8$ integrin. *Cancer Res* 2011; **71**: 6371–81.
- 32 Barczyk M, Carracedo S, Gullberg D. Integrins. *Cell Tissue Res* 2010; **339**: 269–80.
- 33 Askari JA, Buckley PA, Mould AP, Humphries MJ. Linking integrin conformation to function. *J Cell Sci* 2009; **122**: 165–70.
- 34 Wang D, Muller S, Amin AR *et al.* The pivotal role of integrin $\beta 1$ in metastasis of head and neck squamous cell carcinoma. *Clin Cancer Res* 2012; **18**: 4589–99.
- 35 Kato H, Liao Z, Mitsios JV *et al.* The primacy of $\beta 1$ integrin activation in the metastatic cascade. *PLoS ONE* 2012; **7**: e46576.
- 36 Lin HC, Wu CL, Chen YL, Huang JS, Wong TY, Yuan K. High-level $\beta 1$ -integrin expression in a subpopulation of highly tumorigenic oral cancer cells. *Clin Oral Investig* 2014; **18**: 1277–84.
- 37 Grzesiak JJ, Tran Cao HS, Burton DW *et al.* Knockdown of the $\beta 1$ integrin subunit reduces primary tumor growth and inhibits pancreatic cancer metastasis. *Int J Cancer* 2011; **129**: 2905–15.
- 38 Carbonell WS, DeLay M, Jahangiri A, Park CC, Aghi MK. $\beta 1$ integrin targeting potentiates antiangiogenic therapy and inhibits the growth of bevacizumab-resistant glioblastoma. *Cancer Res* 2013; **73**: 3145–54.
- 39 Huang C, Park CC, Hilsenbeck SG *et al.* $\beta 1$ integrin mediates an alternative survival pathway in breast cancer cells resistant to lapatinib. *Breast Cancer Res* 2011; **13**: R84.
- 40 Morello V, Cabodi S, Sigismund S *et al.* $\beta 1$ integrin controls EGFR signaling and tumorigenic properties of lung cancer cells. *Oncogene* 2011; **30**: 4087–96.
- 41 Moiseeva EP, Williams B, Goodall AH, Samani NJ. Galectin-1 interacts with $\beta 1$ subunit of integrin. *Biochem Biophys Res Commun* 2003; **310**: 1010–6.

Supporting Information

Additional supporting information may be found in the online version of this article:

Fig. S1. Primary cultures of carcinoma-associated fibroblasts (CAF) (a–c) and normal associated fibroblasts (NAF) (d–f). Magnification, $\times 200$; phase contrast microscopy.