

CORRECTION

# Correction: PRAME Is a Golgi-Targeted Protein That Associates with the Elongin BC Complex and Is Upregulated by Interferon-Gamma and Bacterial PAMPs

Frances R. Wadelin, Joel Fulton, Hilary M. Collins, Nikolaos Tertipis, Andrew Bottley, Keith A. Spriggs, Franco H. Falcone, David M. Heery

[Fig 2](#) is incorrect. Panels A-D are inadvertently missing. The authors have provided a corrected version [here](#).

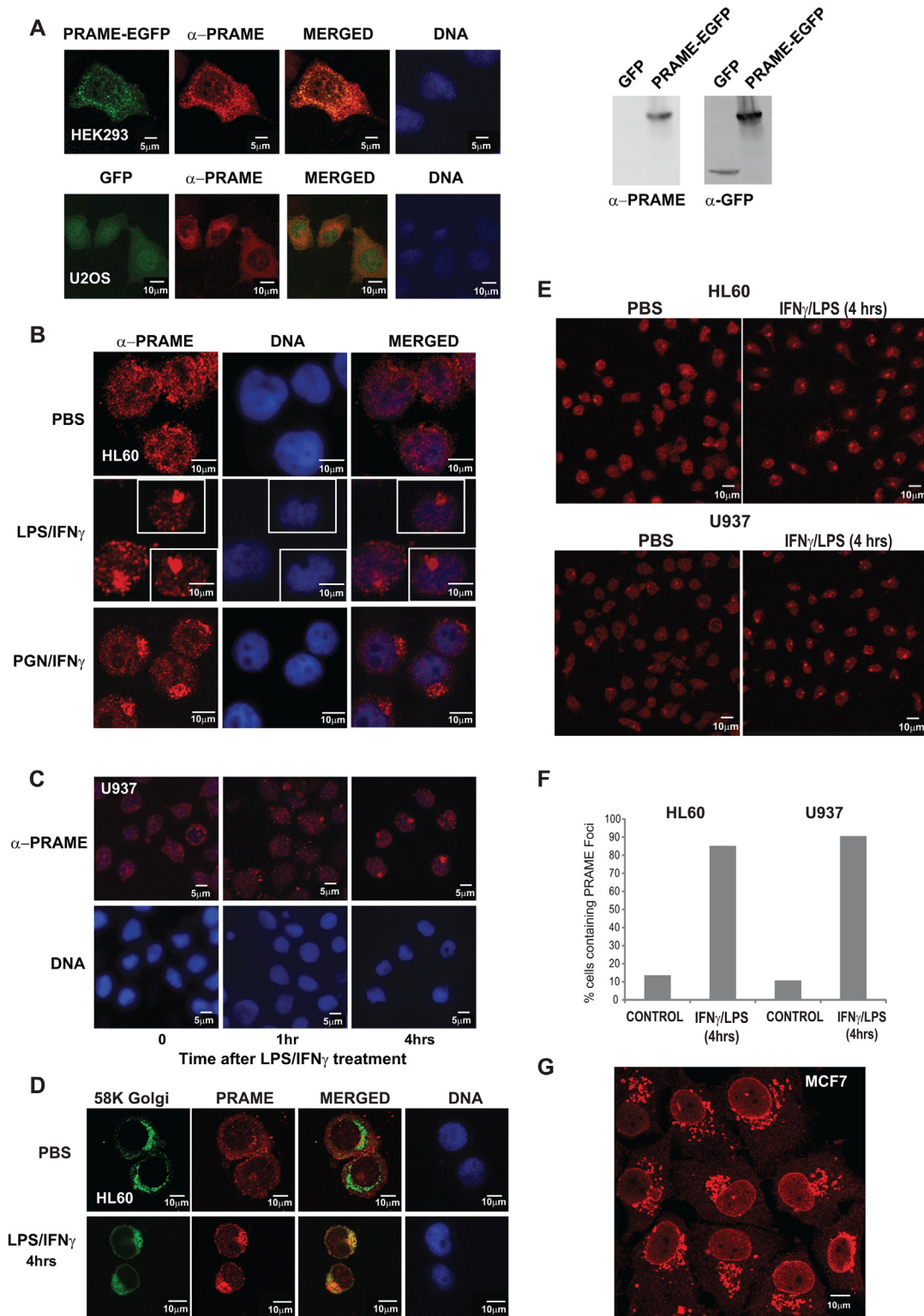


## OPEN ACCESS

**Citation:** Wadelin FR, Fulton J, Collins HM, Tertipis N, Bottley A, Spriggs KA, et al. (2015) Correction: PRAME Is a Golgi-Targeted Protein That Associates with the Elongin BC Complex and Is Upregulated by Interferon-Gamma and Bacterial PAMPs. PLoS ONE 10(6): e0129297. doi:10.1371/journal.pone.0129297

**Published:** June 12, 2015

**Copyright:** © 2015 Wadelin et al. This is an open access article distributed under the terms of the [Creative Commons Attribution License](#), which permits unrestricted use, distribution, and reproduction in any medium, provided the original author and source are credited.



**Fig 2. PRAME localises to the Golgi network following LPS/IFN $\gamma$  treatment.** (A) HEK293 cells (upper panels) were transiently transfected with PRAME-EGFP (green) and stained with  $\alpha$ -PRAME antibody (red) to confirm the identity of the overexpressed EGFP fusion protein. U2OS cells (lower panels) were cotransfected with GFP (green) and PRAME-FLAG (red). Merged images indicate the extent of coincidence of the EGFP and  $\alpha$ -PRAME signals, and nuclear DNA is indicated (blue). The right hand panels are western blots showing detection of GFP or PRAME-EGFP proteins in whole cell extracts of transfected U2OS cells. (B) Immunostaining of endogenous PRAME in HL60 cells using  $\alpha$ -PRAME antibody following treatment with PBS, LPS/IFN $\gamma$  or

PGN/IFN $\gamma$  for 4 hrs. **(C)** Immunostaining of endogenous PRAME in U937 cells with  $\alpha$ -PRAME following treatment with LPS/IFN $\gamma$  for 0, 1 and 4 hrs. **(D)** HL60 cells treated with LPS/IFN $\gamma$  for 4 hrs and immunostained with  $\alpha$ -Golgi 58K (green) and  $\alpha$ -PRAME (red). Merged images show the extent of colocalisation of both proteins. For immunofluorescence (A–D), nuclear DNA was stained using Hoechst 33258 and images were captured using a LSM510 confocal laser scanning microscope. **(E)** Immunostaining of endogenous PRAME in HL60 cells using  $\alpha$ -PRAME antibody following treatment with PBS or LPS/IFN $\gamma$  for 4 hrs. **(F)** Quantification (n = 60) of the percentage of cells in (E) containing PRAME cytoplasmic foci in treated cells or controls. **(G)** Immunostaining of endogenous PRAME in MCF-7 cells using  $\alpha$ -PRAME antibody.

doi:10.1371/journal.pone.0129297.g001

## Reference

1. Wadelin FR, Fulton J, Collins HM, Tertipis N, Bottley A, Spriggs KA, et al. (2013) PRAME Is a Golgi-Targeted Protein That Associates with the Elongin BC Complex and Is Upregulated by Interferon-Gamma and Bacterial PAMPs. PLoS ONE 8(2): e58052. doi: [10.1371/journal.pone.0058052](https://doi.org/10.1371/journal.pone.0058052) PMID: [23460923](https://pubmed.ncbi.nlm.nih.gov/23460923/)