

medial cuneiform to the base of the second metatarsal. Ideal placement of the screw is pivotal to maintaining reduction and achieving a good outcome. We describe a technique that enables the surgeon to accomplish precise, reproducible screw placement using an anterior cruciate ligament (ACL) guide.

**TECHNIQUE**

The ACL guide consists of a pin sleeve, marking hook and variable angle jig. The angle on the jig varies from 40° to 70°. We recommend that the ACL guide is placed as shown in Figure 1, confirming the position by image intensifier. The guidewire can now be inserted, overdrilled and a screw placed.

**DISCUSSION**

The second metatarsal base is considered the 'keystone' of the Lisfranc articulation.<sup>1</sup> Anatomic reduction and stable fixation are the goals of surgery. It is imperative that the screw is placed in the desired position in one go as multiple tries could 'pepper pot' the second metatarsal cortex, causing fracture and compromising fixation. The technique described is not original but may help surgeons perform this difficult operation quickly, safely and reliably.

**Reference**

1. DeOrio M, Erickson M, Usulli FG, Easley M. Lisfranc injuries in sport. *Foot Ankle Clin* 2009; **14**: 169–186.

**Soft plastic snugger to assist seating of prosthetic aortic valve**

DJF Smith<sup>1</sup>, GKR Soppa<sup>2</sup>, MT Yates<sup>2</sup>

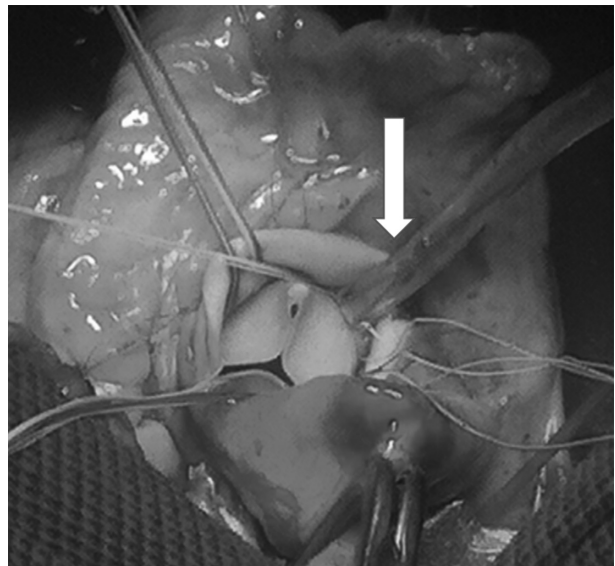
<sup>1</sup>Imperial College London, UK

<sup>2</sup>St George's Healthcare NHS Trust, UK

**CORRESPONDENCE TO**

Martin Yates, E: martin.yates@nhs.net

Accurate positioning of a prosthetic aortic valve, in the native aortic annulus, is essential to prevent paravalvular leak. However, it may be difficult to achieve good apposition between a rigid prosthetic valve and deeply scalloped annulus. Ubiquitous to cardiac operating sets, a soft plastic snugger can be used to secure the middle suture in each sinus. This flattens and approximates the annulus while sutures are tied from each commissure towards the snugger, ensuring a good seal (Fig 1). Finally, the snugger is removed and the last suture tied. This is a safe, affordable and reproducible method of accurately seating a prosthetic valve.



**Figure 1** Soft plastic snugger to secure sutures in non-coronary cusp while tying valve into place