

RESEARCH ARTICLE

# Minimally Invasive Monitoring of Chronic Central Venous Catheter Patency in Mice Using Digital Subtraction Angiography (DSA)

Giovanna Figueiredo<sup>1,2</sup>, Teresa Fiebig<sup>2</sup>, Stefanie Kirschner<sup>2</sup>, Omid Nikoubashman<sup>1</sup>, Lisa Kabelitz<sup>1</sup>, Ahmed Othman<sup>1</sup>, Andrea Nonn<sup>1</sup>, Martin Kramer<sup>3</sup>, Marc A. Brockmann<sup>1,2\*</sup>

**1** Department of Diagnostic and Interventional Neuroradiology, University Hospital of the RWTH Aachen, Aachen, Germany, **2** Department of Neuroradiology, University Medical Center Mannheim, Medical Faculty Mannheim, Heidelberg University, Mannheim, Germany, **3** Department of Veterinary Clinical Sciences, Small Animal Clinic, Justus-Liebig-University, Giessen, Germany

\* [brockmann@gmx.de](mailto:brockmann@gmx.de)



## Abstract

### Background

Repetitive administration of medication or contrast agents is frequently performed in mice. The introduction of vascular access mini-ports (VAMP) for mice allows long-term vascular catheterization, hereby eliminating the need for repeated vessel puncture. With catheter occlusion being the most commonly reported complication of chronic jugular vein catheterization, we tested whether digital subtraction angiography (DSA) can be utilized to evaluate VAMP patency in mice.

### Methods

Twenty-three mice underwent catheterization of the jugular vein and subcutaneous implantation of a VAMP. The VAMP was flushed every second day with 50  $\mu$ L of heparinized saline solution (25 IU/ml). DSA was performed during injection of 100  $\mu$ L of an iodine based contrast agent using an industrial X-ray inspection system intraoperatively, as well as 7 $\pm$ 2 and 14 $\pm$ 2 days post implantation.

### Results

DSA allowed localization of catheter tip position, to rule out dislocation, kinking or occlusion of a microcatheter, and to evaluate parent vessel patency. In addition, we observed different ante- and retrograde collateral flow patterns in case of jugular vein occlusion. More exactly, 30% of animals showed parent vessel occlusion after 7 $\pm$ 2 days in our setting. At this time point, nevertheless, all VAMPs verified intravascular contrast administration. After 14 $\pm$ 2 days, intravascular contrast injection was verified in 70% of the implanted VAMPs, whereas at this point of time 5 animals had died or were sacrificed and in 2 mice parent vessel occlusion hampered intravascular contrast injection. Notably, no occlusion of the catheter itself was observed.

## OPEN ACCESS

**Citation:** Figueiredo G, Fiebig T, Kirschner S, Nikoubashman O, Kabelitz L, Othman A, et al. (2015) Minimally Invasive Monitoring of Chronic Central Venous Catheter Patency in Mice Using Digital Subtraction Angiography (DSA). PLoS ONE 10(6): e0130661. doi:10.1371/journal.pone.0130661

**Editor:** Francesco Cappello, University of Palermo, ITALY

**Received:** January 13, 2015

**Accepted:** May 24, 2015

**Published:** June 22, 2015

**Copyright:** © 2015 Figueiredo et al. This is an open access article distributed under the terms of the [Creative Commons Attribution License](https://creativecommons.org/licenses/by/4.0/), which permits unrestricted use, distribution, and reproduction in any medium, provided the original author and source are credited.

**Data Availability Statement:** All relevant data are within the paper.

**Funding:** The acquisition of the micro-CT (Yxlon Y. Fox) was funded by the Federal Ministry of Education and Research and the Land Baden-Württemberg (HBFG grant # 125-648).

**Competing Interests:** The authors have declared that no competing interests exist.

## Conclusion

From our observations we conclude DSA to be a fast and valuable minimally invasive tool for investigation of catheter and parent vessel patency and for anatomical studies of collateral blood flow in animals as small as mice.

## Introduction

Small rodents such as mice are increasingly used in preclinical research, mostly in the fields of pharmacological, biomedical and behavioral research. As a consequence, repeated vascular access for intravenous or intraarterial administration of medication or contrast agents, as well as for blood sampling may be required. Whereas tail vein injections can be safely performed in mice [1], they sometimes are cumbersome, time-consuming and require training. If performed repeatedly, they may cause venous thrombosis and wounds of the tail interfering with further injections [2].

Using a port-catheter system for long-term vascular catheterization eliminates the need for repeated vessel puncture [3–5]. Pros and cons of different mouse port systems have been described [6]. The most commonly used site for placement of chronic venous catheters in small animals is the external jugular vein [7–10], for which catheter patency beyond 30 days has been reported [11]. Less frequently catheters have also been placed into the femoral vein or the inferior vena cava [7, 12–14]. Whereas long-term catheter placement has been described for pharmacological [15, 16], oncological [17] and cerebrovascular research [4], catheter occlusion is a critical point that may complicate, falsify or even invalidate the results of the studies. Thus, several factors including site of catheter placement, technique of catheter insertion, biocompatibility of the catheter material, diameter and shape of the catheter as well as the schedule for catheter flushing and the type of lock solution used have been discussed to influence catheter patency [11]. Reviewing the literature we found that thrombotic occlusion has been reported to be the most frequent complication of chronic catheterization [2, 18]. This has been reported to be caused by stagnation of blood flow around and within the catheter causing problems like blood clotting, infection or even vessel necrosis [19]. Moreover, “fibrin sleeves” have been described to develop around the intravascular part of the catheter [20–22].

Due to these problems methods to ensure, to extend and to evaluate catheter patency have been discussed. These include withdrawal of blood or injection of saline or other marker-substances through the catheter to evaluate “patency” or “non-patency” as outcome measure [23–26]. During our recent experiments with a novel MRI-compatible micro-port for small animals [6] we were able to gain further insights regarding vessel patency by performing digital subtraction angiography (DSA) in mice [27, 28]. In the underlying manuscript DSA is presented as a method for evaluation of catheter patency.

## Material and Methods

### Animals

All procedures and housing of the animals were carried out according to the criteria outlined in the “Guide for the Care and Use of Laboratory Animals” prepared by the National Academy of Sciences and published by the National Institutes of Health. All experiments were carried out after receiving local ethics committee approval (Regierungspräsidium Karlsruhe). Institutional guidelines for animal welfare and experimental conduct were followed. In the

experiments, 10-week-old male C57BL/6J mice, weighing 21–25 g, were used. All animals were kept in a temperature-controlled room with a 12-hour light/dark cycle and had free access to water and a standard laboratory diet.

### Implantation of a vascular access mini-port (VAMP)

Twenty-three mice were anesthetized by an intraperitoneal injection of ketamine (120 mg/kg body weight, Ketamin 10%; Intervet, Bela-Pharm GmbH&CoKG, Vechta, Germany) and xylazine (16 mg/kg body weight, Rompun 2%; Bayer Vital GmbH, Leverkusen, Germany). When sufficient anesthesia was achieved, the animals were positioned supine on a warming plate (Medax GmbH; Neumünster, Germany) at 37°C and fixed with tape. Catheterization of the right jugular vein as well as assembly and implantation of the vascular access mini-port (VAMP) were performed according to procedures previously described [6, 15, 16, 29]. The VAMP was made from a shortened intravenous cannula cone with a rubber membrane inside and with a 5–6 cm long 2F silicone tube (Silastic; Dow Corning, Wiesbaden, Germany), which was slid over the stub of the shortened, stabilized 26 G catheter from the cannula cone. After sterilization at 121°C for 20 min and flushing with heparinized saline solution, we aimed at implanting the catheter tip into the right atrium via the jugular vein. The port reservoir was placed subcutaneously on the animals back.

Postoperatively animals were administered metamizol (Novalgin; Ratiopharm, Ulm, Germany) subcutaneously (200 mg/kg) on the day of the operation and over 3 days via drinking water (200 mg/kg).

The VAMP was flushed every second day with 50 µl of heparinized (25 IU/ml) saline solution. Before flushing, the hair on the back of the animals was clipped and the skin sanitized (Softasept; Braun, Melsungen, Germany) before puncture.

### Digital Subtraction Angiography (DSA)

The animals underwent DSA using the VAMP for contrast injection directly after implantation, as well as one and two weeks after mini-port catheter implantation. DSA was performed using an industrial micro-CT (Y.Fox; Yxlon International GmbH, Hamburg, Germany) with a transmission X-ray tube (Yxlon) and a flat panel detector (Varian PaxScan 2520; Varian, Palo Alto, CA, USA) [27, 28]. Anaesthetized (Forene; Abbot, Wiesbaden, Germany) mice were positioned in a cradle under the X-ray source, gain and offset calibration were performed. DSA was performed by infusion of a pre-warmed (37°C) contrast agent bolus (Iomeprol 300; target volume 100 µl, infusion rate 3.4 ml/min) via the VAMP. DSA projections were acquired at 30 frames per second, using a detector pixel matrix of 944×704, a tube voltage of 80 kV, and a 75 µA current. Spatial resolution of DSA ranged between 18×18 µm and 21×21 µm.

DSA sequences were recorded digitally in an Audio Video Interleave (AVI) movie file format. The AVI files were imported using ImageJ (v1.44i; Wayne Rasband; National Institutes of Health, USA) and decomposed to single projections (by saving them as an image sequence). The decomposed single projections were saved using the RAW file format.

### Results

DSA with administration of 100 µl of an iodine-based contrast agent was technically feasible and tolerated well by all animals. The implanted VAMP and catheter were clearly identifiable in all subtraction angiographies.

Angiography was carried out directly after the operation in 23 mice. The catheter tip was localized within the right ventricle (n = 1), right atrium (n = 3), superior cava vein (n = 8) and jugular vein (n = 11). In the course of the study, we observed dislocation of three catheters: two

dislocated from the superior cava vein into the right atrium and one, positioned in the superior vena cava, dislocated into the proximal jugular vein. Catheter breakage was ruled out in all cases. DSA directly after implantation of the VAMP showed a regular antegrade blood flow pattern with high contrast of the aorta and supra-aortic vessels as shown exemplarily in [Fig 1](#) (and [Figs 2A–2C](#) and [3A–3C](#)).

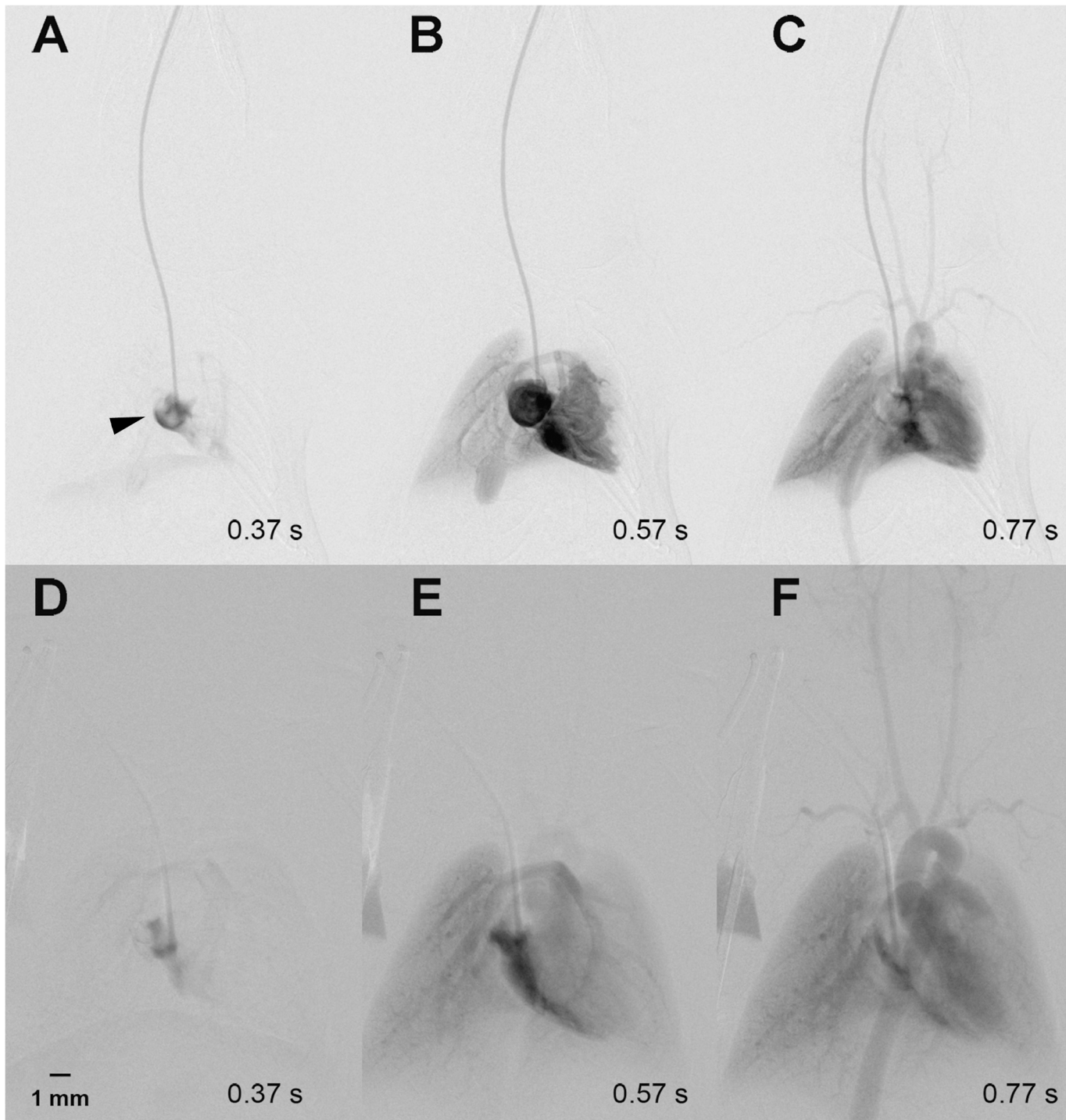
The number of catheters showing a “regular” antegrade blood flow declined over the following two weeks. More exactly, after  $7\pm 2$  days only 70% ( $n = 16$ ) of the catheters provided a regular antegrade flow with sufficient arterial contrast. The other 30% ( $n = 7$ ) presented with different collateral blood flow patterns, which resulted in a reduced arterial contrast in DSA. In all animals showing a collateral flow pattern, however, catheter patency with regard to intravascular administration of contrast agent was confirmed after one week. The following collateral flow patterns were observed: 1.) Occlusion of the jugular vein resulted in contrast enhancement via a “ladder-like” network of perivertebral veins, from which the contralateral jugular vein and the vena cava were contrasted (example shown in [Fig 2D–2F](#)). We termed this flow pattern antegrade collateral flow, as the flow filled the collaterals in an antegrade direction. 2.) Occlusion of the jugular vein resulted in blood flow via ipsilateral cervicothoracic collaterals into the vena cava ([Fig 3D–3F](#)). This flow pattern we termed “retrograde collateral flow”, as the blood flow filled collaterals in a retrograde direction. 3.) In some cases we visualized a combination of both flow patterns, which we thus termed antegrade and retrograde collateral flow (exemplarily shown in [Fig 4D–4F](#)). The incidence of catheter patency and the observed respective flow patterns over the course of two weeks is summarized in [Fig 5](#).

After  $14\pm 2$  days, 39% ( $n = 9$ ) of the implanted catheters still provided regular antegrade flow, whereas in 30% ( $n = 7$ ) of the mice a collateral flow pattern with insufficient arterial contrast was observed. Thus, intravascular application of contrast agent was feasible in 69% of the animals after two weeks. At this time point, 22% ( $n = 5$ ) of the animals had died or showed complete vessel occlusion (9%;  $n = 2$ ), as exemplarily shown in [Fig 4G–4I](#). Notably, [Fig 4](#) does not show occlusion of the catheter itself, but only occlusion of the jugular vein up the point of catheter insertion, which results in backflow of contrast agent along the outer side of the catheter even outside the vessel. Cause of death was not identifiable in all animals. Only in 4 animals a (histo-)pathological workup was performed. In one of these animals an intraventricular purulent thrombus was identified, whereas in the remaining animals the cause of death remained unclear.

## Discussion

Regardless of various approaches to maintain catheter patency in small rodents, no studies systematically evaluated the fate of catheters implanted using DSA. Doing so, we found DSA to be a fast and minimally invasive tool for evaluation of parent vessel and catheter patency in live mice. DSA allowed us to intra-operatively verify the catheter position, and helped us to identify catheter dislocation or kinking. Additionally, the high temporal resolution of DSA allowed visualization of collateral blood flow in these small animals.

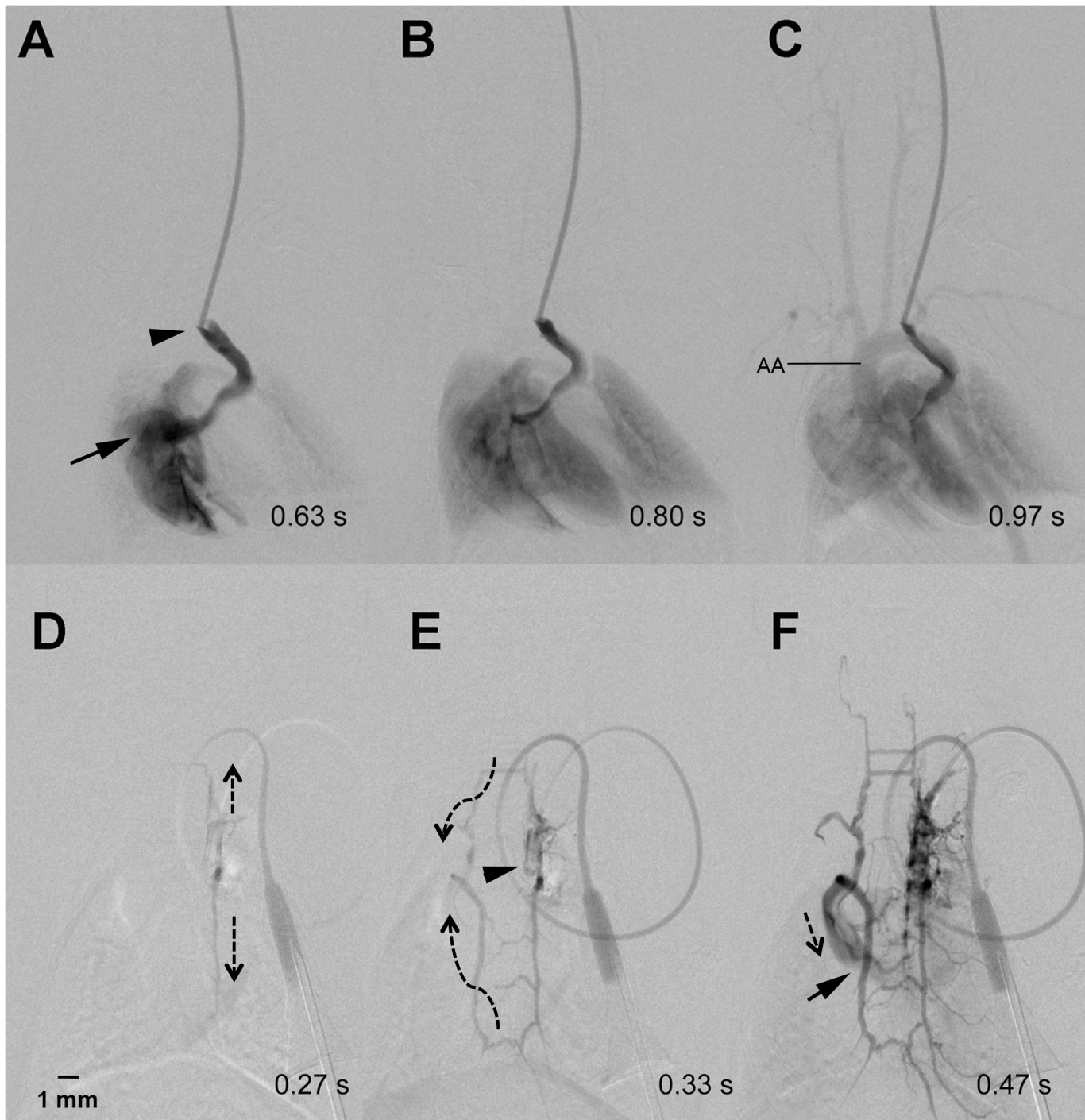
Whereas catheter occlusion is a frequently discussed topic, we did not observe occlusion of the catheter itself in any of the animals. In all cases, contrast agent injection out of the catheter tip was possible, even though the catheter tip in some cases was located within an occluded parent vessel. In some of these cases, contrast injection still allowed to achieve intravascular enhancement via retrograde flow along the outside of a catheter (within the occluded parent vessel) with subsequent contrast enhancement of collateral vessels (exemplarily shown in [Figs 2D–2F](#) and [3D–3F](#)). From this we concluded, that it may still be feasible to use mini-port systems even in case of parent vessel occlusion.



**Fig 1. Regular antegrade blood flow pattern.** A-C show a regular contrast agent inflow during implantation of a port-catheter into the right atrium (arrow tip) via the right jugular vein. Thus, in A only the right atrium contains contrast agent, which then flows via the pulmonary arteries into the lung (B), and finally contrasts the left ventricle, the aortic arch as well as the supraaortic arterial vessels (C). A repeat DSA with regular contrast agent flow was performed in the same animal 2 weeks later (D-F).

doi:10.1371/journal.pone.0130661.g001

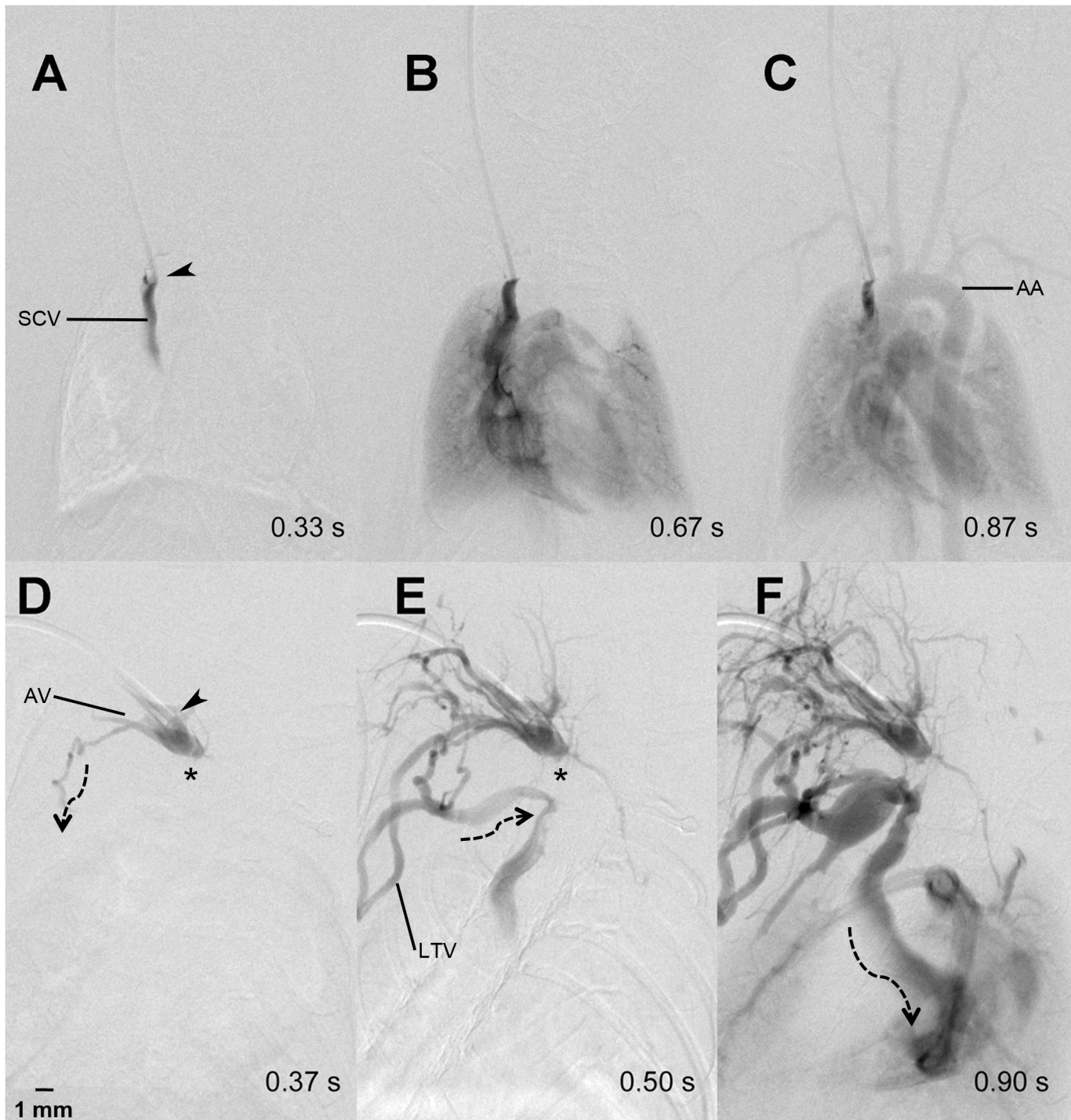
On the other hand, blood flow via collateral vessels leads to a delay and reduction of arterial contrast enhancement, which may be required for radiological high-contrast bolus imaging



**Fig 2. Collateral antegrade flow pattern.** The catheter tip (arrow head) is located within the jugular vein of the mouse. Contrast agent flows from the patent jugular vein into the right atrium (arrow) (A). From there it fills the lungs (B) and the aortic arch (AA) including the supraaortic arterial vessels (C). Contrast injection via the implanted mini-port one week later shows occlusion of the jugular vein (D). Instead, the contrast agent flowed (indicated by dotted arrows) via a “ladder-like” venous collateral network (E) with some delay and reduced contrast intensity into the right atrium (arrow) (F).

doi:10.1371/journal.pone.0130661.g002

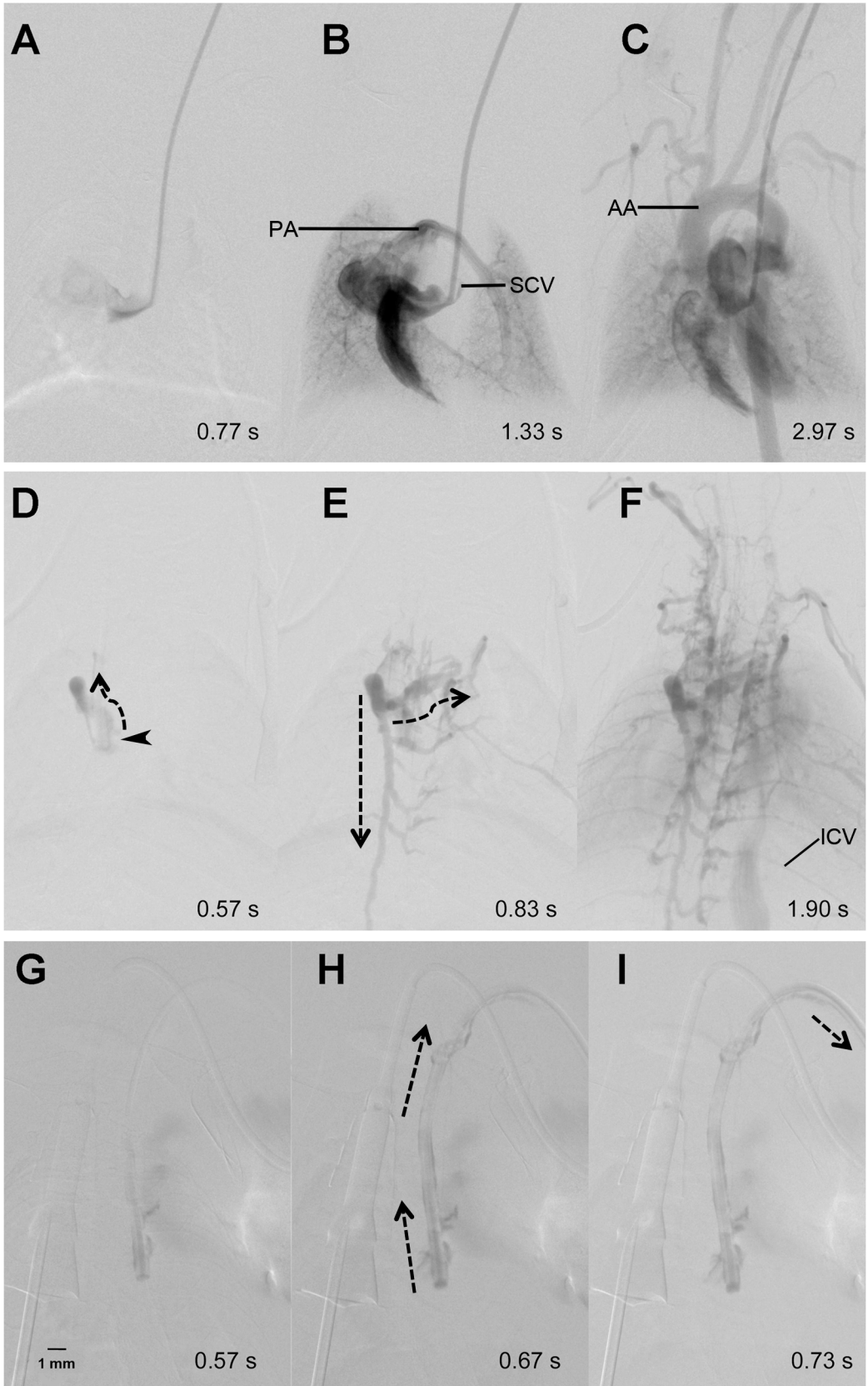
studies like arterial perfusion imaging. Nevertheless, a port may still be used if a slight delay in contrast enhancement is not of relevance. This, for example, may be the case in studies aiming



**Fig 3. Collateral retrograde flow pattern.** Regular contrast agent flow through the heart, lung and aortic arch (AA) after contrast injection into a port-catheter implanted into the superior caval vein (SCV) (A-C). One week later, the catheter tip (arrow head) was dislocated slightly backwards into the confluents of the jugular and axillary vein (AV) and the SCV was thrombosed (\*) (D). The contrast agent flowed (dotted arrows) into the proximal SCV via thoracic collaterals including the lateral thoracic vein (LTV) (E and F).

doi:10.1371/journal.pone.0130661.g003

at medication effects or the visualization of brain tumors in mice [30]. However, one cannot definitely be certain that all quantity of injected medicine will reach the vascular system.





**Fig 4. Collateral ante- and retrograde flow pattern.** DSA directly after implantation of a catheter port shows timely filling of the superior cava vein (SCV) (A), the right atrium, ventricle, pulmonary arteries (PA), (B) as well as the aortic arch (AA) and supraaortic arterial vessels (C). One week later, the SCV was occluded at the site of the catheter tip (arrow head) (D) and retrograde flow (dotted arrows) of contrast agent leads to filling of perivertebral “ladder-like” and cervicothoracic collateral veins (E). Finally, the intercostal veins (ICV) are contrasted and a faint filling of the right ventricle and the lungs is observed. Another week later (G-I) complete occlusion of the parent vessel is evident. This results in retrograde flow of contrast agent along the outside of the catheter (H and I), which continues outside the jugular vein.

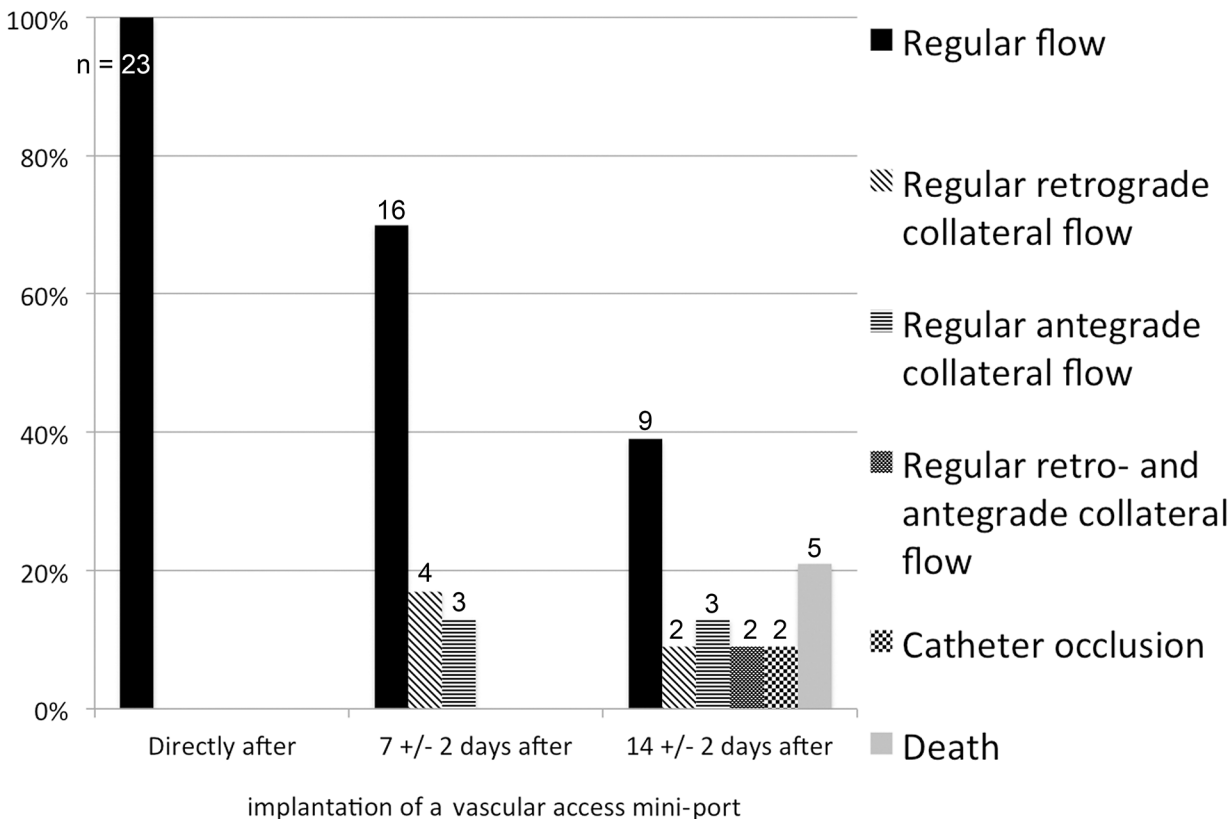
doi:10.1371/journal.pone.0130661.g004

In other cases we observed that the administered contrast agent failed to re-enter the vascular system. In all of these cases, however, DSA provided proof that not catheter, but vessel occlusion was the underlying problem.

In the current experiments we did not try to draw blood via the VAMP. Other authors described the repetitive use of implanted ports or catheters for this purpose in mice. In such a setting, the inability to draw blood from a catheter or port was considered catheter occlusion [16]. Our results indicate, that the inability to draw blood from a venous catheter should not be equated with catheter occlusion or the inability to use a catheter for injections.

Regardless of the mouse port system used, catheter or parent vessel occlusion remains a frequently reported problem. Thus, different factors influencing catheter patency like catheter material and coating [29], the frequency of catheter flushings [4, 29, 31–33], the lock solution used after flushing [33–35], catheter coating [36, 37], as well as form and position of the catheter tip [4, 9, 15, 16, 26, 29, 38, 39] have been discussed elsewhere.

To conclude, DSA allows repeated, fast and definite testing of a port’s patency as well as examination of parent vessel status in animals as small as mice. Our study further



**Fig 5. Parent vessel patency and incidence of different flow patterns over the course of two weeks after mini port implantation in mice.**

doi:10.1371/journal.pone.0130661.g005

demonstrated, that missing antegrade flow during injection does not necessarily prove occlusion of a catheter or port, but that a port still may be used for infusion of medications or contrast agent that do not rely on a bolus technique.

## Author Contributions

Conceived and designed the experiments: MAB TF MK. Performed the experiments: TF GF MAB. Analyzed the data: GF LK AN AO ON. Wrote the paper: GF MK MAB SK.

## References

1. Groman EV, Reinhardt CP. Method to quantify tail vein injection technique in small animals. *Contemp Top Lab Anim Sci*. 2004; 43(1):35–8. PMID: [14984288](#).
2. Popovic P, Sybers H, Popovic VP. Permanent cannulation of blood vessels in mice. *J Appl Physiol*. 1968; 25(5):626–7. PMID: [5687370](#).
3. Kim H, Folks KD, Guo L, Stockard CR, Fineberg NS, Grizzle WE, et al. DCE-MRI detects early vascular response in breast tumor xenografts following anti-DR5 therapy. *Mol Imaging Biol*. 2011; 13(1):94–103. doi: [10.1007/s11307-010-0320-2](#) PMID: [20383593](#); PubMed Central PMCID: PMC4138021.
4. Chen L, Swartz KR, Toborek M. Vessel microport technique for applications in cerebrovascular research. *J Neurosci Res*. 2009; 87(7):1718–27. doi: [10.1002/jnr.21973](#) PMID: [19115415](#); PubMed Central PMCID: PMC2713928.
5. Madoiwa S, Kobayashi E, Kashiwakura Y, Sakata A, Yasumoto A, Ohmori T, et al. Immune response against serial infusion of factor VIII antigen through an implantable venous-access device system in haemophilia A mice. *Haemophilia*. 2012; 18(3):e323–30. doi: [10.1111/j.1365-2516.2011.02686.x](#) PMID: [22044430](#).
6. Fiebig T, Figueiredo G, Boll H, Kerl HU, Noelte IS, Forster A, et al. A Low Cost Metal-Free Vascular Access Mini-Port for Artifact Free Imaging and Repeated Injections in Mice. *PloS one*. 2013; 8(6): e65939. doi: [10.1371/journal.pone.0065939](#) PMID: [23824056](#); PubMed Central PMCID: PMC3688803.
7. Burvin R, Zloczower M, Karnieli E. Double-vein jugular/inferior vena cava clamp technique for long-term in vivo studies in rats. *Physiol Behav*. 1998; 63(4):511–5. PMID: [9523892](#).
8. Noble F, Coric P, Turcaud S, Fournie-Zaluski MC, Roques BP. Assessment of physical dependence after continuous perfusion into the rat jugular vein of the mixed inhibitor of enkephalin-degrading enzymes, RB 101. *Eur J Pharmacol*. 1994; 253(3):283–7. PMID: [8200422](#).
9. Yoburn BC, Morales R, Inturrisi CE. Chronic vascular catheterization in the rat: comparison of three techniques. *Physiol Behav*. 1984; 33(1):89–94. PMID: [6505057](#).
10. Patsalos PN, Alavijeh MS, Semba J, Lolini YI. A freely moving and behaving rat model for the chronic and simultaneous study of drug pharmacokinetics (blood) and neuropharmacokinetics (cerebrospinal fluid): hematological and biochemical characterization and kinetic evaluation using carbamazepine. *J Pharmacol Toxicol Methods*. 1992; 28(1):21–8. PMID: [1392055](#).
11. Cocchetto DM, Bjornsson TD. Methods for vascular access and collection of body fluids from the laboratory rat. *J Pharm Sci*. 1983; 72(5):465–92. PMID: [6345750](#).
12. de Jong WH, Timmerman A, van Raaij MT. Long-term cannulation of the vena cava of rats for blood sampling: local and systemic effects observed by histopathology after six weeks of cannulation. *Lab Anim*. 2001; 35(3):243–8. PMID: [11459408](#).
13. Koeslag D, Humphreys AS, Russell JC. A technique for long-term venous cannulation in rats. *J Appl Physiol Respir Environ Exerc Physiol*. 1984; 57(5):1594–6. PMID: [6520058](#).
14. Pages T, Fernandez JA, Adan C, Gamez A, Viscor G, Palacios L. A method for sampling representative muscular venous blood during exercise in rats. *Lab Anim*. 1993; 27(2):171–5. PMID: [8501900](#).
15. Barr JE, Holmes DB, Ryan LJ, Sharpless SK. Techniques for the chronic cannulation of the jugular vein in mice. *Pharmacol Biochem Behav*. 1979; 11(1):115–8. PMID: [493295](#).
16. Mokhtarian A, Meile MJ, Even PC. Chronic vascular catheterization in the mouse. *Physiol Behav*. 1993; 54(5):895–8. PMID: [8248379](#).
17. Klesper B, Zywiets F. A new method for multiple applications of cytostatic drugs in rats. *Onkologie*. 1991; 14(1):74–5. PMID: [2057178](#).
18. Paul MA, Dave C. A simple method for long-term drug infusion in mice: evaluation of guanazole as a model (38488). *Proc Soc Exp Biol Med*. 1975; 148(1):118–22. PMID: [1129251](#).
19. Lokich JJ, Bothe A Jr., Benotti P, Moore C. Complications and management of implanted venous access catheters. *J Clin Oncol*. 1985; 3(5):710–7. Epub 1985/05/01. PMID: [3923161](#).

20. Stephens LC, Haire WD, Kotulak GD. Are clinical signs accurate indicators of the cause of central venous catheter occlusion? *JPEN J Parenter Enteral Nutr.* 1995; 19(1):75–9. PMID: [7658605](#).
21. Lund M, Rostad B. [Thrombosis caused by a central venous catheter]. *Tidsskr Nor Laegeforen.* 1985; 105(30):2145–6. PMID: [4071508](#).
22. Lund M, Torjusen B. [Central venous catheters. A prospective study of complications]. *Tidsskr Nor Laegeforen.* 1985; 105(16):1143–6. PMID: [4012716](#).
23. Yang J, Maarek JM, Holschneider DP. In vivo quantitative assessment of catheter patency in rats. *Lab Anim.* 2005; 39(3):259–68. PMID: [16004684](#); PubMed Central PMCID: PMC4100546.
24. Forauer AR, Theoharis CG, Dasika NL. Jugular vein catheter placement: histologic features and development of catheter-related (fibrin) sheaths in a swine model. *Radiology.* 2006; 240(2):427–34. doi: [10.1148/radiol.2402031129](#) PMID: [16864670](#).
25. Xiang DZ, Verbeken EK, Van Lommel AT, Stas M, De Wever I. Sleeve-related thrombosis: a new form of catheter-related thrombosis. *Thromb Res.* 2001; 104(1):7–14. PMID: [11583734](#).
26. Mucha RF, Volkowskis C. Patency of chronic jugular cannulae with systematically varied outer diameter and length. *J Pharm Pharmacol.* 1979; 31(3):191–2. PMID: [34702](#).
27. Figueiredo G, Boll H, Kramer M, Groden C, Brockmann MA. In vivo X-ray digital subtraction and CT angiography of the murine cerebrovasculature using an intra-arterial route of contrast injection. *AJNR Am J Neuroradiol.* 2012; 33(9):1702–9. doi: [10.3174/ajnr.A3071](#) PMID: [22576899](#).
28. Figueiredo G, Brockmann C, Boll H, Heilmann M, Schambach SJ, Fiebig T, et al. Comparison of digital subtraction angiography, micro-computed tomography angiography and magnetic resonance angiography in the assessment of the cerebrovascular system in live mice. *Clin Neuroradiol.* 2012; 22(1):21–8. doi: [10.1007/s00062-011-0113-2](#) PMID: [22109696](#).
29. Bardelmeijer HA, Buckle T, Ouwehand M, Beijnen JH, Schellens JH, van Tellingen O. Cannulation of the jugular vein in mice: a method for serial withdrawal of blood samples. *Lab Anim.* 2003; 37(3):181–7. doi: [10.1258/002367703766453010](#) PMID: [12869279](#).
30. Kirschner S, Felix MC, Hartmann L, Bierbaum M, Maros ME, Kerl HU, et al. In vivo micro-CT imaging of untreated and irradiated orthotopic glioblastoma xenografts in mice: capabilities, limitations and a comparison with bioluminescence imaging. *J Neurooncol.* 2015; 122(2):245–54. doi: [10.1007/s11060-014-1708-7](#) PMID: [25605299](#).
31. Carney JM, Landrum RW, Cheng MS, Seale TW. Establishment of chronic intravenous drug self-administration in the C57BL/6J mouse. *Neuroreport.* 1991; 2(8):477–80. PMID: [1912483](#).
32. Thomsen M, Caine SB. Chronic intravenous drug self-administration in rats and mice. *Curr Protoc Neurosci.* 2005; Chapter 9: Unit 9 20. doi: [10.1002/0471142301.ns0920s32](#) PMID: [18428629](#).
33. Chistyakov VS TV. How to achieve chronic intravenous drug self-administration in mice. *Journal of pharmacological and toxicological methods.* 2006;(53: ):117–27. PMID: [15979901](#)
34. Yamauchi T, Furui S, Harasawa A, Ishimura M, Imai T, Hayashi T. Optimum iodine concentration of contrast material through microcatheters: hydrodynamic analysis of experimental results. *Phys Med Biol.* 2002; 47(14):2511–23. PMID: [12171337](#).
35. Luo YS LY, Ashford EB, Morin RR, White WJ, et al. Comparison of Catheter Lock Solutions in rats. 51st Annual Meeting of the American Association of Laboratory Animal Science; San Diego. 42000.
36. Foley PL, Barthel CH, Brausa HR. Effect of covalently bound heparin coating on patency and biocompatibility of long-term indwelling catheters in the rat jugular vein. *Comp Med.* 2002; 52(3):243–8. PMID: [12102570](#).
37. Fonseca UN, Nielsen SG, Hau J, Hansen AK. Permanent catheterization of the carotid artery induces kidney infection and inflammation in the rat. *Lab Anim.* 2010; 44(1):46–53. doi: [10.1258/la.2009.008122](#) PMID: [19858167](#).
38. Brown JA, Rachlin J, Rubin JM, Wollmann RL. Ultrasound evaluation of experimental hydrocephalus in dogs. *Surg Neurol.* 1984; 22(3):273–6. PMID: [6463838](#).
39. Kelley BM, Bandy AL, Middaugh LD. A novel chronic and detachable indwelling jugular catheterization procedure for mice. *Physiol Behav.* 1997; 62(1):163–7. PMID: [9226357](#).