

Role of endoscopic ultrasonography in the loco-regional staging of patients with rectal cancer

Pietro Marone, Mario de Bellis, Valentina D'Angelo, Paolo Delrio, Valentina Passananti, Elena Di Girolamo, Giovanni Battista Rossi, Daniela Rega, Maura Claire Tracey, Alfonso Mario Tempesta

Pietro Marone, Mario de Bellis, Valentina D'Angelo, Elena Di Girolamo, Giovanni Battista Rossi, Alfonso Mario Tempesta, Endoscopy Unit, Istituto Nazionale Tumori - IRCCS, 80131 Naples, Italy

Paolo Delrio, Daniela Rega, Division of Colorectal Surgical Oncology, Istituto Nazionale Tumori - IRCCS, 80131 Naples, Italy

Valentina Passananti, Division of Gastroenterology Medical School, University Federico II, 80131 Naples, Italy

Maura Claire Tracey, Division of Thoracic Surgery Istituto Nazionale Tumori-IRCCS, 80131 Naples, Italy

Author contributions: Marone P, D'Angelo V and Passananti V contributed to revision of the literature and selection of relevant articles; Marone P, de Bellis M and D'Angelo V contributed to composition of the manuscript; de Bellis M, Delrio P, Di Girolamo E, Rossi GB, Rega D and Tempesta AM contributed to critical revision of the manuscript; Tracey MC contributed to English revision.

Conflict-of-interest: The authors declare that there are no conflicts of interest.

Open-Access: This article is an open-access article which was selected by an in-house editor and fully peer-reviewed by external reviewers. It is distributed in accordance with the Creative Commons Attribution Non Commercial (CC BY-NC 4.0) license, which permits others to distribute, remix, adapt, build upon this work non-commercially, and license their derivative works on different terms, provided the original work is properly cited and the use is non-commercial. See: <http://creativecommons.org/licenses/by-nc/4.0/>

Correspondence to: Pietro Marone, MD, Endoscopy Unit, Istituto Nazionale Tumori-IRCCS, Fondazione G Pascale, Via Mariano Semmola snc, 80131 Naples, Italy. p.marone@istitutotumori.na.it
Telephone: +39-081-5903228
Fax: +39-081-5903824

Received: October 5, 2014

Peer-review started: October 6, 2014

First decision: October 28, 2014

Revised: February 7, 2015

Accepted: March 18, 2015

Article in press: March 20, 2015

Published online: June 25, 2015

Abstract

The prognosis of rectal cancer (RC) is strictly related to both T and N stage of the disease at the time of diagnosis. RC staging is crucial for choosing the best multimodal therapy: patients with high risk locally advanced RC (LARC) undergo surgery after neoadjuvant chemotherapy and radiotherapy (NAT); those with low risk LARC are operated on after a preoperative short-course radiation therapy; finally, surgery alone is recommended only for early RC. Several imaging methods are used for staging patients with RC: computerized tomography, magnetic resonance imaging, positron emission tomography, and endoscopic ultrasound (EUS). EUS is highly accurate for the loco-regional staging of RC, since it is capable to evaluate precisely the mural infiltration of the tumor (T), especially in early RC. On the other hand, EUS is less accurate in restaging RC after NAT and before surgery. Finally, EUS is indicated for follow-up of patients operated on for RC, where there is a need for the surveillance of the anastomosis. The aim of this review is to highlight the impact of EUS on the management of patients with RC, evaluating its role in both preoperative staging and follow-up of patients after surgery.

Key words: Rectal cancer; Staging; Endoscopic ultrasonography; Accuracy; Therapeutic strategy

© The Author(s) 2015. Published by Baishideng Publishing Group Inc. All rights reserved.

Core tip: In the era of tailored management of patients with rectal cancer (RC), endoscopic ultrasonography (EUS) has become crucial for the appropriate preoperative

staging of these patients. This review highlights the impact of EUS on the management of patients with RC, evaluating its role in both preoperative staging of RC and follow-up of patients after surgery. Finally, possible new applications are discussed, on the basis of the technologic innovation and the evolution of the therapeutic strategies.

Marone P, de Bellis M, D'Angelo V, Delrio P, Passananti V, Di Girolamo E, Rossi GB, Rega D, Tracey MC, Tempesta AM. Role of endoscopic ultrasonography in the loco-regional staging of patients with rectal cancer. *World J Gastrointest Endosc* 2015; 7(7): 688-701 Available from: URL: <http://www.wjgnet.com/1948-5190/full/v7/i7/688.htm> DOI: <http://dx.doi.org/10.4253/wjge.v7.i7.688>

INTRODUCTION

Every year approximately 40000 patents are diagnosed with rectal cancer (RC), and the incidence of RC in the European Union is 15-25/100000 per year, with an estimated mortality of 4-10/100000 per year^[1]. The prognosis of RC is strictly related to both T and N stage of the disease at the time of diagnosis^[2]. This is traditionally staged according to local invasion depth (T stage), lymph node involvement (N stage), and presence of distant metastases (M stage) (Table 1)^[3,4]. Staging RC is crucial for choosing the best multimodal therapy (Table 2)^[2]: patients with high risk locally advanced RC (LARC) undergo surgery after neoadjuvant chemotherapy plus radiotherapy (NAT); those with low risk LARC are operated on after a preoperative short-course radiation therapy. The latter is used as a valid alternative to NAT in elderly patients, or for patients unfit for preoperative chemotherapy because of severe comorbidities. Finally, surgery alone is recommended only for early RC. Total mesorectal excision (TME) is the standard surgical approach, with or without sphincter preservation. Extended abdomino-perineal resection is performed in distal RC which requires sphincter demolition. Local excision is performed in small T1 cancers with favorable histology by means of trans anal endoscopic microsurgery (TEM) or trans anal minimally invasive surgery. Local excision is also performed in selected patients showing complete clinical response after NAT. Therefore, precise staging of patients has a pivotal role for the selection of different therapeutic options and team work among the members of the multidisciplinary team is mandatory to improve patients outcome^[2].

Several imaging methods are used for staging patients with RC: computerized tomography (CT), magnetic resonance imaging (MRI), positron emission tomography (PET) and endoscopic ultrasound (EUS)^[1]. The latter has a high accuracy for loco-regional staging of RC, since it is capable to evaluate precisely the mural infiltration of the tumor (T), especially in the early RC.

Table 1 The 2010 AJCC staging system for primary rectal cancer

Primary tumor (T)	
TX	Primary tumor cannot be assessed
T0	No evidence of primary tumor
Tis	Carcinoma <i>in situ</i> : Intraepithelial or invasion of lamina propria
T1	Tumor invades submucosa
T2	Tumor invades muscularis propria
T3	Tumor invades through the muscularis propria into pericorectal tissues
T4a	Tumor penetrates to the surface of the visceral peritoneum
T4b	Tumor directly invades or is adherent to other organs or structures
Regional lymph nodes (N)	
NX	Regional lymph nodes cannot be assessed
N0	No regional nodal metastasis
N1	Metastasis in 1-3 regional lymph nodes
N1a	Metastasis in one regional lymph node
N1b	Metastasis in 2-3 regional lymph nodes
N1c	Tumor deposit(s) in the subserosa, mesentery, or non-peritonealized pericolic or perirectal tissues without regional nodal metastasis
N2	Metastasis in 4 or more regional lymph nodes
N2a	Metastasis in 4-6 regional lymph nodes
N2b	Metastasis in 7 or more regional lymph nodes
Distant metastasis (M)	
M0	No distant metastasis
M1	Distant metastasis
M1a	Metastasis confined to one organ or site (<i>i.e.</i> , liver, lung, ovary, non-regional node)
M1b	Metastases in more than one organ/site or the peritoneum

From ref.[3].

Table 2 Therapeutic strategy

cT1 cT2 cN0 cCRM-	Surgery alone
Any cT cN+	CRT
cT2 cT3 cN0 cCRM+	
cT2 cT3 cN0 cCRM-	SCRT

C: Clinical stage; CRM: Circumferential resection margin; CRT: Standard chemotherapy + radiation therapy; SCRT: Short term chemotherapy + radiotherapy. From ref.[2].

On the other hand, EUS is less accurate in restaging RC after NAT and before surgery. Recently, EUS has been used in clinical trials where patients have been selected for less invasive therapies: polypectomy for T1 RC; TEM for T1/T2-N0 cancers, and NAT + TEM for T2N0 tumors. Finally, EUS is indicated for following-up patients operated on for RC, where there is a need for surveillance of the colorectal anastomosis, which is at risk for local recurrences^[2,5-7].

This review evaluates the role of EUS in the loco-regional staging of patients with RC, analyzing both accuracy and limits of this imaging method, which is part of the multidisciplinary approach for patients with RC. In particular, the aim of the review is to highlight the impact of EUS on the management of patients with RC, evaluating its role in both preoperative staging and follow-up after surgery. Finally, possible new applications are discussed on the basis of the

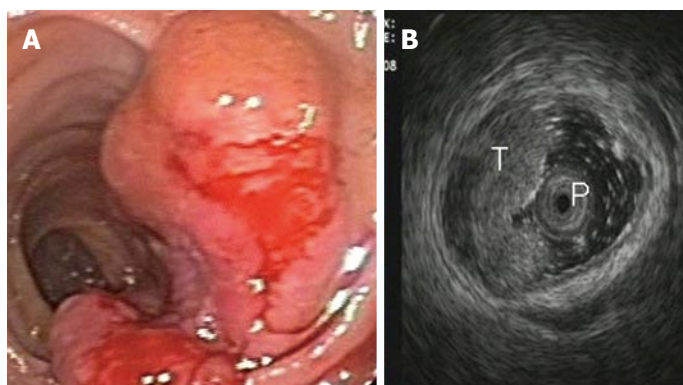


Figure 1 Stage T1 rectal cancer: (A) endoscopic and (B) ultrasonographic view. Endoscopic ultrasound with radial miniprobe (12 MHz), showing a small tumor located within the mucosa and superficial submucosal layers, and preservation of the outer layers of the rectal wall. T: Tumor; P: Radial probe.

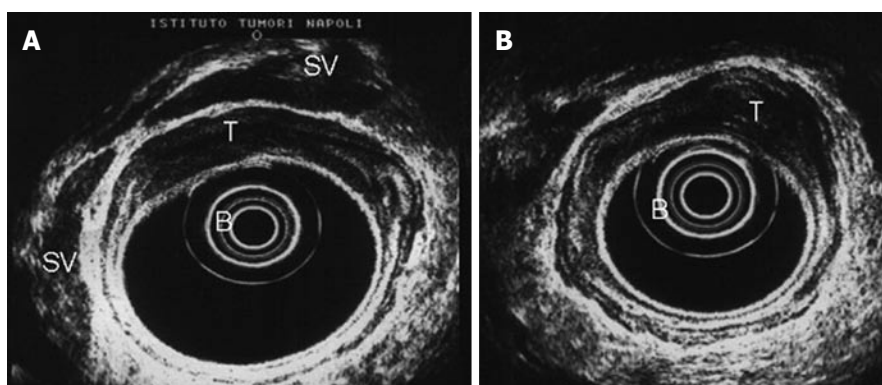


Figure 2 Stage T2 rectal cancer: Ultrasonographic view. The tumor infiltrated the entire wall, without invading the smooth outer margin of the muscularis propria (fourth layer). Endoscopic ultrasound with radial array transducer UM 20 (7.5-12 MHz). B: Balloon; T: Tumor; SV: Seminal vesicles.

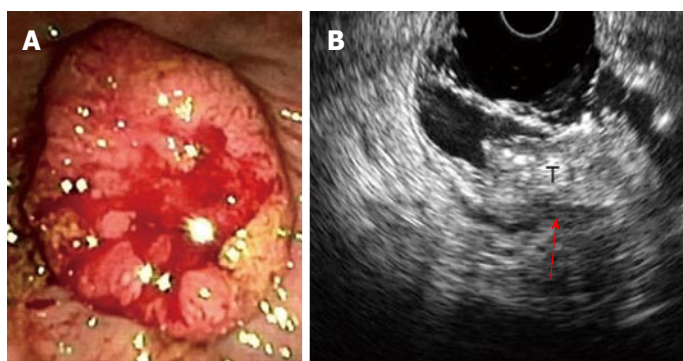


Figure 3 Stage T3 rectal cancer: (A) endoscopic and (B) ultrasonographic view. Endoscopic ultrasound with radial array transducer UM160 (5-20 MHz), showing increased wall thickness for the presence of a mass with inhomogeneous echogenicity, invading all the layers of the wall and minimal infiltration of the perirectal fat. T: Tumor; Red arrow: Infiltration of the perirectal fat.

technological innovation and the evolution of the therapeutic strategies^[7-10] (Figure 1).

EUS Accuracy in staging rectal cancer T staging

At the time of EUS, RC usually appear as a hypoechoic mass, with loss of the normal echo-layers of the wall, which is inhomogeneous and irregular because of the fusion of the layers infiltrated by the tumor^[5,9-11]. According to the infiltration depth, there are four different echoendoscopic T stages (uT) (Table 3, Figures 1-5). In patients with RC, EUS assesses the tumor penetration depth into the rectal wall, with an overall accuracy for T stage of about 84%, ranging from 63% to 96%, while the reported accuracy of CT and MRI are 65%-75% and 75%-85%, respectively (Table 4)^[12-45]. In a systematic review of 31 articles published over a period of 20 years, Skandarajah *et al.*^[46] reported that

EUS has an overall accuracy of 82% for T stage and it is useful for discriminating early superficial RC. In another review of 42 studies, which analyzed the accuracy of EUS in patients with RC, confirmed by pathological exam of the surgical specimen, Puli *et al.*^[47,48] concluded that EUS has a sensitivity of 81%-96% and a specificity of 91%-98%, showing a higher sensitivity for LARC (95%), compared with early cancer (88%). In a multicenter, prospective, study conducted in 384 hospitals in Germany over a 8-year period, Marusch *et al.*^[49] analyzed the diagnostic accuracy of rectal EUS in the clinical staging of 7000 patients with RC who had not received NAT. This allowed uT vs pT comparison, which showed a uT-pT correspondence of 65%. The latter was related to the hospital volume, with uT-pT correspondence of 63% for hospitals undertaking ≤ 10 EUS/year, 65% for those performing 11-30 EUS/year,

Table 3 T staging (uT) of rectal cancer at endoscopic ultrasound, according to the infiltration depth

uT1 = tumor invasion limited to the mucosa and the submucosa; this is further divided into T1m, if the tumor infiltrates the mucosa, with normal muscularis mucosa, and T1sm, when there is submucosal invasion (Figures 1 and 7)
uT2 = tumor infiltration of the muscularis propria, with the tumor mass extended through the first 4 layers of the rectal wall. The outer layer corresponding to the muscularis propria is smooth, meaning that the tumor is still limited to the rectal wall (Figure 2)
uT3 = tumor invasion of the perirectal fat, with an irregular 4th layer, which means that the tumor has spread outside the rectal wall (Figures 3 and 4)
uT4 = tumor infiltration of adjacent structures and organs, which are strictly connected to the rectal hypoechoic mass (Figure 5)

From ref.[9].

Table 4 Endoscopic ultrasound accuracy of T and N stage of rectal cancer

Ref.	Pts no.	T Stage	N Stage	P/R	Type of EUS probe
Saitoh <i>et al</i> ^[13]	88	90%	75%	-	Flexible, radial, (7 MHz) Rigid, radial (5-7.5 MHz)
Feifel <i>et al</i> ^[14]	79	89%	-	P	Rigid, linear (3-7 MHz)
Yamashita <i>et al</i> ^[15]	122	78%	-	R	Rigid, linear (5.5-7 MHz)
Beynon <i>et al</i> ^[16]	100	93%	83%	-	Rigid
Rifkin <i>et al</i> ^[17]	102	72%	81%	-	Rigid, radial (7 MHz)
Hildebrandt <i>et al</i> ^[18]	113	-	78%	P	Rigid, radial (7 MHz)
Tio <i>et al</i> ^[19]	91	88%	-	-	Rigid
Katsura <i>et al</i> ^[20]	120	92%	-	-	Rigid, radial, (7 MHz)
Glaser <i>et al</i> ^[21]	154	86%	81%	P	Rigid, radial (7 MHz)
Herzog <i>et al</i> ^[22]	118	89%	80%	P	Rigid, radial (7 MHz)
Cho <i>et al</i> ^[23]	76	82%	70%	P	Flexible, radial (7 MHz)
Thaler <i>et al</i> ^[24]	36	88%	80%	P	Rotating wall transducer IR 1510 AKTM (Kretz) (5, 7.5, 10 MHz)
Nielson <i>et al</i> ^[25]	100	85%	-	-	Probe (7 MHz)
Sailer <i>et al</i> ^[26]	160	77%	83%	P	Rigid
Nishimori <i>et al</i> ^[27]	70	76%	69%	-	Flexible
Norton <i>et al</i> ^[28]	121	92%	65%	P	Flexible, radial (7.5-12 MHz)
Kim <i>et al</i> ^[29]	89	81%	63%	-	Rotating transducer (7.5 MHz)
Marone <i>et al</i> ^[30]	63	81%	70%	R	Flexible, radial (7.5-12 MHz)
Akasu <i>et al</i> ^[31]	154	96%	72%	R	Flexible, radial (7.5-12 MHz)
Garcia-Aquilar <i>et al</i> ^[32]	545	69%	64%	P	Rigid, radial (7-10 MHz)
Harewood <i>et al</i> ^[12]	80	91%	82%	P	Flexible, radial (7.5-12 MHz)
Marusch <i>et al</i> ^[33]	422	63%	-	P	Rigid
Kauer <i>et al</i> ^[34]	458	69%	68%	R	Probe (7.5-10 MHz)
Vila <i>et al</i> ^[35]	120	83%	72%	P	Flexible, radial
Landman <i>et al</i> ^[36]	938	-	70%	P	Probe (10 MHz)
Halefoglu <i>et al</i> ^[37]	34	85%	76%	P	Probe (7-10 MHz)
Lin <i>et al</i> ^[38]	192	86%	78%	P	Flexible, radial (7.5-12 MHz)
Fernández-Esparrach <i>et al</i> ^[39]	90	95%	65%	P	Flexible, radial (5-20 MHz)
Ünsal <i>et al</i> ^[40]	31	80%	70%	R	Radial
Zhu <i>et al</i> ^[41]	110	91%	85%	-	Rigid, radial (5-10 MHz)
	4976				
Mean		84	74		
Range		63-96	63-85		

uTN stage compared with pTN stage; no previous neoadjuvant therapy (NAT). P: Prospective; R: Retrospective; Pts: Patients; EUS: Endoscopic ultrasound.

and 73% for hospitals where more than 30 EUS/year were performed. Furthermore, the poorest uT-pT correspondence was found for T2 and T4 RC, with understaging occurring in 18% of cases and overstaging in 17% of patients^[49]. These results were similar to those of a previous multicenter, prospective, study conducted by the same authors who reported that EUS had overall accuracy of 63% for T staging of RC. The diagnostic accuracy was 51% for pT1 RC, 58% for pT2 lesions, 73% for pT3 tumors, and 44% for pT4 cancers, with overstaging in 24% of cases and understaging in 13% of patients^[33]. According to the results of both studies, EUS staging of RC in clinical practice does

not have the same accuracy reported in the literature and the authors believe that EUS is a useful tool for guiding the therapeutic strategy of RC only when it is performed by experts^[33,49]. Lower accuracy of EUS was also reported in a series of 545 patients with RC, where this method showed an overall accuracy of 69% for T stage and 64% for N stage^[32]. A possible limitation of this study was the exclusion from the analysis of those patient who underwent NAT. This could have affected the accuracy of EUS for T stage, especially for T3 RC which is usually visualized the best at the time of EUS. Another pitfall of the study could be the different experience of the operators, which influenced the

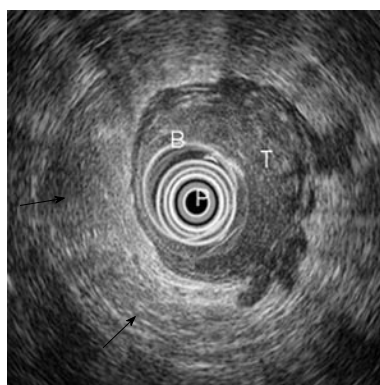


Figure 4 Stage T3 rectal cancer: Ultrasonographic view. Endoscopic ultrasound shows advanced cancer of the rectum with large hypoechoic and inhomogeneous thickening of the rectal wall, loss of the five-layered wall structure and deep infiltration of the perirectal fat. Endoscopic ultrasound with radial array transducer UM160 (5-20 MHz). B: Ballon; P: Transducer; T: Tumor; Black arrow: Perirectal fat.

accuracy of EUS, as highlighted by Marusch *et al*^[33,49]. Indeed, Kauer *et al*^[34] observed that there is a high inter-observer variability (61%-77%), according to the experience of the operator. These authors reported that EUS has an overall accuracy of 69% for T staging of RC, with T3 tumors better (86%) staged and T4 cancer the least (36%) accurately classified. Differentiating T1 from T2 was difficult in this retrospective series, where overstaging (19%) was much more frequent than understaging (12%)^[34].

Superficial RC limited to the mucosa can be resected endoscopically. Whenever a trans anal resection is planned, it is recommended to perform a preoperative EUS staging of the tumor, as suggested by Kneist *et al*^[50]. These authors evaluated the accuracy of EUS in 552 patients undergoing trans anal excision of RC and they reported that EUS has a sensitivity of 95% and a positive predictive value of 93% in staging early RC^[50]. Similarly, Glancy *et al*^[51] demonstrated that EUS has an overall accuracy of 95% in staging early superficial RC suitable for local treatment. This high accuracy rate was confirmed by Zorcolo *et al*^[52], who reported that EUS allows a precise distinction between early and advanced RC, with sensitivity of 96%, specificity of 85%, and overall accuracy of 94%. The latter is lower in our personal series, where we reported that EUS has an accuracy rate of 81% in differentiating early (T1) from advanced RC (T2), with the same occurrence of overstaging and understaging (9%)^[30]. Finally, a recent meta-analysis analyzed the results of 11 studies, which discussed the efficacy of preoperative EUS in staging patients with early RC: the sensitivity of EUS in diagnosing T0 was 97%, with a specificity of 96%^[48]. These data support the conclusion that EUS accurately diagnoses T0 RC, helping physicians to choose endoscopic treatment for patients with early RC.

Several studies have shown that EUS accuracy for T stage is strictly related to the depth of infiltration and the accuracy is lower for T2 stage than for early

Table 5 Accuracy of endoscopic ultrasound for each single T stage

Ref.	Year	No.	pT1	pT2	pT3	pT4
Akasu <i>et al</i> ^[31]	1997	164	86%	56%	93%	75%
Marone <i>et al</i> ^[30]	2000	63	80%	78%	84%	80%
Lin <i>et al</i> ^[38]	2011	192	86%	94%	86%	65%
Fernández-Esparrach <i>et al</i> ^[39]	2011	90	95%	76%	76%	95%
Zhu <i>et al</i> ^[41]	2013	110	93%	88%	88%	96%
Range		619	80%-95%	56%-94%	76%-93%	65%-96%
Mean			88%	78.4%	85.4%	80.2%

uTN stage compared with pTN stage; No previous neoadjuvant therapy (NAT).

(T1) or advanced (T3-4) RC (Table 5)^[31,30,38,39,41]. These assumptions are supported by the results of another meta-analysis which examined 42 studies, with a total number of 5039 patients: the pooled sensitivity and specificity of EUS for T1 stage was 88% and 98%, respectively; for T2 stage, EUS had pooled sensitivity and specificity of 80% and 96%, respectively; for T3 stage, the pooled sensitivity and specificity of EUS were 96% and 91%, respectively; finally, for T4 stage, EUS had pooled sensitivity of 95% and specificity of 98%, respectively. The authors of this meta-analysis concluded that EUS should be the imaging method of choice for T staging of RC^[47]. Despite the high accuracy that EUS has for T stage, this imaging method is not capable of differentiating peri-tumoral inflammation and edema from neoplastic infiltration. One of the mayor limits of EUS, is overstaging T2-T3 RC, with the risk of overtreatment^[30,32,53-59]. In T3 stage cancer infiltrates the rectal wall up to the perirectal fat, with different penetration depth. The precise evaluation of the infiltration depth into the perirectal fat is an important prognostic factor for T3 RC. Harewood *et al*^[56] demonstrated that T3 RC are not all equal, with minimally invasive disease carrying a more favorable prognosis. In a series of 42 patients with T3 RC, who underwent surgery without receiving NAT, EUS overstaged the minimally invasive (invasion < 2 mm beyond muscularis propria at EUS) T3 cancer in 50% of cases, in comparison with advanced (invasion > 2 mm beyond muscularis propria at EUS) T3 RC. These were overstaged only in 4% of cases. The reported EUS accuracy for differentiating T1/T2 and T3/T4 was 88%, with an overall accuracy of 76% for T stage and 63% for N stage. Since the overstaging rate of minimally invasive T3 RC was high, the authors recommend to exclude these patients from NAT, which should be used only for patients with advanced T3 RC^[56]. These data highlight the importance of proper measurement of the infiltration depth of RC at EUS, because this information is crucial for establishing the prognosis and guiding the multimodal therapy. According to Esclapez *et al*^[57], an ultrasonographic maximum tumor thickness cutoff point of 19 mm could be useful to classify patients preoperatively and select them for primary surgery or

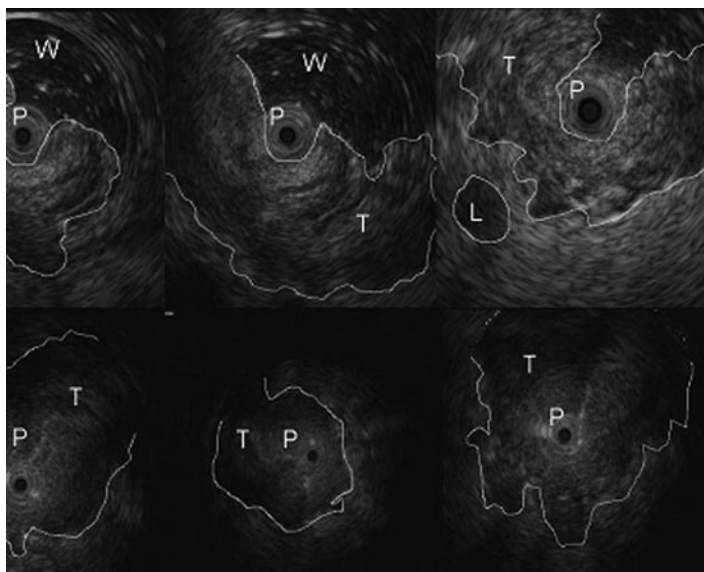


Figure 5 Stage T4 rectal cancer: Miniprobe ultrasonographic view. Endoscopic ultrasound with radial miniprobe (12 MHz) shows an advanced, stenotic rectal cancer with large hypoechoic and inhomogeneous thickening of the rectal wall, loss of the five-layered wall structure and invasion of adjacent organs. T: Tumor; P: Miniprobe; L: Metastatic lymph node; W: Water.

Table 6 N staging at endoscopic ultrasound, according to the number of metastatic lymph nodes

uN1 = 1-3 positive nodes
uN2 = More than 4 metastatic lymph nodes

From ref.[9].

NAT. Indeed, these authors showed that tumor thickness of more than 19 mm in uT3 RC was associated with a higher rate of postoperative recurrence^[57].

In approximately 14% of RC there is a stricture that cannot be traversed by the echoendoscope, leading to inaccurate staging and potential errors because EUS evaluates only the distal portion of the cancer^[5,50,51]. The presence of a stricture is a limitation for staging RC at EUS: this determines not only inaccurate T staging, but also incomplete N staging because perirectal lymph nodes cannot be examined. Moreover, a stricture often does not permit perpendicular position of the ultrasonographic beam and an adequate focal distance of the probe from the tumor leading to misstaging. All these pitfalls can lead to an incorrect staging of the tumor, which can then affect the therapeutic strategy^[5]. Marone *et al.*^[60] reported that EUS has an overall accuracy of 83% in a series of 127 patients with RC, who underwent surgery without receiving NAT. When the T stages were analyzed separately, EUS showed an accuracy of 76% for T1, 72% for T2, 91% for T3 and 67% for T4 stages. Overall, EUS misstaged T in 16% of cases, with 11% of overstaging and 5% of understaging errors. The presence of a stricture lowered the accuracy rate of EUS for T stage from 93% to 56%; similarly the distance of RC from the anal verge affected the accuracy of EUS for T stage, which decreased from 92% for tumors located > 5 cm from the anal verge to 67% for cancer sites < 5 cm from the anus^[60]. Therefore, the presence of a stricture and tumor distance of less than 5 cm from the anal verge are two factors limiting the accuracy of EUS in staging RC.

Recently, the capability of EUS in assessing MRF and predicting the circumferential resection margin (CRM) of RC has been evaluated by Granero-Castro *et al.*^[61]. In a series of 76 patients with mid-low RC, preoperative staging was performed by means of both MRI and EUS and the patients underwent surgery without receiving NAT. A comparison between preoperative (EUS and MRI) CRM status and pathologic examination after TME surgery was eventually made: overall accuracy of EUS and MRI in assessing CRM status was 84% and 92%, respectively, with similar negative predictive values (97%). When focusing on low RC, the overall accuracy of EUS increased to 87%, whereas MRI lowered its accuracy rate to 87%, with a negative predictive value of 96% for both imaging methods. These data suggest that EUS should be used together with MRI for predicting CRM involvement in low anterior RC.

N STAGING

EUS allows the assessment of perirectal lymph nodes for metastatic infiltration: these are metastatic when they appear as roundish or oval, homogeneous echopoor nodules with a short axis of at least 5 mm (Figure 6)^[5,7,9,10]. According to the number of metastatic lymph nodes, there are two different N (uN) echoendoscopic stages (Table 6).

The incidence of malignant metastatic lymph nodes in patients with RC is strictly related to T stage and varies from 6%-11% for T1, 10%-35% for T2 and 26%-65% for T4 RC^[3,5,7,8]. Determination of lymph nodes involvement during EUS is difficult and less precise, with a variable accuracy of 63%-85% (Table 4)^[12-45]. Kauer *et al.*^[34] reported that EUS has an overall accuracy of 68% in diagnosing metastatic lymph nodes associated to RC, with a sensitivity of 52% and a specificity of 82%. A recent meta-analysis of 35 published studies evaluated the accuracy of EUS in diagnosing metastatic lymph nodes of patients with RC^[7]. EUS showed sensitivity of 73% and specificity of

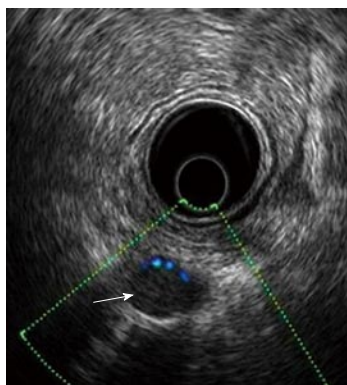


Figure 6 Perirectal metastatic lymph node: Ultrasonographic view. Endoscopic ultrasound with radial array transducer UM160 (5-20 MHz). White arrow: Perirectal metastatic lymph node.

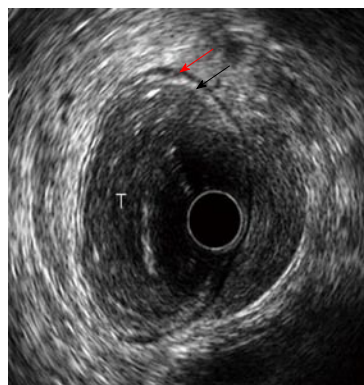


Figure 7 Stage T1 rectal cancer: miniprobe ultrasonographic view. Endoscopic ultrasound with radial miniprobe (12 MHz), showing a small tumor located within the mucosa and superficial submucosal layers, with preservation of the outer layers of the rectal wall. T: Tumor; Red arrow: Muscularis propria layer; Black arrow: Submucosa layer.

76% for N staging and the data analyzed supported the hypothesis that EUS is more accurate in excluding nodal invasion, rather than diagnosing it. Indeed, determination of nodal invasion is less accurate because of difficulty in discriminating between inflammatory and metastatic nodes, which leads to false positive diagnosis and possible overtreatment. The size of lymph nodes could be indicative of neoplastic invasion: nodes greater than 5 mm can be metastatic in 50%-70% of cases, whereas those smaller than 4 mm harbor malignancy in less than 20% of cases^[16]. These data have been partly confirmed by Akasu *et al.*^[59], which observed that the incidence of nodal metastases is strictly related to the size of the lymph node in patients with RC: 9.5% for nodes less than 2 mm; 47% when the lymph node measures 3-5 mm and 87% for nodes larger than 6 mm. However, despite this correlation between size of the node and incidence of metastatic invasion, there are several reports of metastatic lymph nodes smaller than 5 mm in patients with RC, with an overall incidence of 18%^[20,62-64]. There is a clear correlation between T stage of RC and risk of metastatic invasion of perirectal lymph nodes. The more advanced the RC, the higher the risk of metastatic lymph nodes: less than 5% with T1m and more than 80% with T3 RC^[65,66]. The latter results were confirmed by Landmann *et al.*^[36], who reported that the accuracy of EUS for N staging decreases from 84% in pT3 RC to 48% in pT1 cancers. The low detection rate of metastatic lymph nodes in T1 RC is probably explained by the fact that in these cancers possible metastatic nodes are small, with a size variable from 0.3 to 3.3 mm. Therefore, EUS can misstage early RC where the presence of neoplastic invasion is possible even in small lymph nodes: this exposes a patient who undergoes local excision to pelvic recurrence because of misstaged early cancer. To avoid this, it was proposed to decrease the dimensional cut off of 5 mm to 3 mm, with increased sensitivity, but reduced specificity and overall accuracy for N staging at EUS. Indeed, with a 5 mm cut off, EUS has an overall accuracy of 89% for N stage in T1 RC, with sensitivity of 39% and specificity of 89%. On the other hand, reducing the cut off to 3 mm,

EUS shows an increased (75%) sensitivity for N stage in T1 RC, with significantly reduced specificity (49%) and overall accuracy (53%)^[31,36,45]. These data confirm that the size of the lymph node cannot be the only parameter to be used for assessing neoplastic nodal invasion in patients with RC^[36,45,59,67].

EUS accuracy for N staging can be ameliorated associating other parameters to the dimensional criterion used for defining malignant lymph nodes. These ultrasound features include lymph node short axis size, echogenicity, shape, and border. Among them, those which better correlate with malignancy are: enlarged node (≥ 1 cm in short axis), hypoechoic appearance, round shape, and smooth border^[11]. The presence of two or more features is associated with EUS sensitivity of 77%, specificity of 29%, and accuracy of 54%. Three or more features give EUS a sensitivity of 68%, and a specificity of 52%, with an accuracy of 61%. Finally, with four or more features EUS shows sensitivity of 23%, specificity of 100% and accuracy of 61%. Simultaneous presence of all these features in a lymph node is related to 100% of positive predictive value, but this is a rare occurrence (less than 25% of cases)^[65]. Despite all the efforts to find the right criteria, determination of lymph nodes involvement during EUS is less accurate and useful than T staging. The most important limitation is the difficulty in both discriminating between inflammatory and metastatic lymph nodes and recognizing small metastatic nodes. These limitations can be overcome by EUS-guided FNA, which allow sampling of the suspicious perirectal nodes, leading to correct N staging. However, even with EUS-guided FNA, the overall accuracy of EUS for N stage remains low, because distant metastatic lymph nodes are undetectable by EUS, since they are out of the scanning area. Indeed, incomplete evaluation of the iliac nodes is the most frequent cause of incorrect staging of patients with RC, leading to mistreatment in 6% of cases^[16,45,62,63,66-70]. Recently, Kim *et al.*^[64] suggested that tridimensional EUS could obviate the low accuracy of

EUS for N staging. However, these results need to be confirmed.

PITFALLS IN STAGING RECTAL CANCER

Sometimes, EUS staging of RC can be incorrect and the cancer is misstaged because of overstaging rather than understaging. At EUS, hypoechoic fibrosis and/or inflammation cannot be differentiated by the hypoechoic mass of the tumor leading to overstaging. On the other hand, understaging occurs when the microscopic neoplastic invasion into the next layer is undetectable during EUS, especially when an entire layer is distended by the invading tumor which abuts into the adjacent layer, without showing clear infiltration. Moreover, a stricture which cannot be traversed limits the accuracy of EUS, while location, shape and size of the tumor can alter the direction of scanning and result in overstaging. Similarly, the T stage can influence the results of EUS staging, as in the case of T2 cancer for which EUS staging is less accurate. Finally, EUS is operator dependent and there is a substantial difference in accuracy between novice and experienced endoscopists, since the latter have learned over the time how to avoid technical problems, like oblique scans, overfilling of the balloon and inadequate water filling of the rectum^[5].

MINIATURE ULTRASONIC PROBES

Dedicated echoendoscopes have some limitations due to the fact that combining endoscopy and ultrasonography in one instrument increases the diameter of such scopes (12-13 mm). Because of the large diameter, complete passage of severe strictures is often impossible. Furthermore, conventional EUS often requires a second examination, separate from the previous routine endoscopy. The miniature ultrasonic probes (diameters about 2 mm; frequencies 12-20-30 MHz) can be passed through the working channel of standard endoscopes to provide high frequency ultrasound images (Figures 1, 5 and 7). These miniprobes allow simultaneous endoscopic and ultrasonographic evaluation of the lesions, complete assessment of strictures that cannot be traversed by conventional echoendoscopes and accurate staging of superficial lesions^[8]. The rarity of lymph node metastases in T1m or T1sm 1 RC supports the indication for endoscopic resection of these lesions, which require accurate preoperative staging. This has been performed by Harada *et al*^[71], using a 15-MHz ultrasound miniprobe in 35 patients with submucosal invasive colorectal cancer. The accuracy of miniprobes was low (37%) in categorizing the different depth of submucosal invasion, while it was high (86%) in differentiating between mucosal/superficial submucosal infiltration (M and SM) and deep submucosal invasion (SM2, SM3, MP, and S)^[71]. These data support the indication for ultrasonographic staging of early colorectal *via* miniprobes in order to plan endoscopic resection. In a prospective study of 131 consecutive

patients with adenocarcinoma or broad-based polyps of colorectum, EUS accuracy for T staging with miniprobes was 96%, with 4% of overstaging and 2% of understaging^[72]. The overall accuracy of N staging using miniature ultrasonographic probes was 87% (sensitivity 95%, specificity 71%, positive predictive value 87%, negative predictive value 88%). These data confirm that miniprobe ultrasonography has a high overall accuracy for both T and N staging of colorectal cancer and it may be useful for selecting patients fit for local resection. Finally, Gall *et al*^[73] conducted a meta-analysis of ten studies with a total of 642 patients to evaluate the accuracy of miniprobe EUS in staging RC. The pooled sensitivity and specificity were respectively 91% and 98% for T1 cancers, 78% and 94% for T2 tumors, 97% and 90% for T3/T4 RC. Eight percent of T1/T2 cancers were upstaged to T3/T4 tumors and 5% of T3/T4 RC were downstaged. Finally, the pooled sensitivity and specificity for N staging were 63% and 82%, respectively. These data confirm that miniprobe EUS is highly effective for clinical staging of RC, allowing identification of those patients who may be suitable for nonsurgical treatments.

EUS-FNA for staging rectal cancer

According to a recent study, EUS-FNA is useful for assessing primary and metastatic rectal cancers. In this setting, EUS-FNA had sensitivity, specificity, positive and negative predictive values of 89%, 79%, 89% and 79% respectively. This technique improves staging of suspected nodal or distant metastases, but it is indicated only when cytologic results will change the therapeutic strategy^[74,75]. This is the conclusion of Harewood *et al*^[12], who reported that standard EUS modified therapeutic strategy of LARC in 25 patients, while only in 1 case EUS-guided FNA was crucial for choosing the correct therapy. According to Shami *et al*^[76], EUS-guided FNA has a clinical impact of 19% on staging and subsequent management of patients with RC. In this cancer the incidence of lymph node metastases is strictly related to T stage, with a higher risk of nodal metastasis with more advanced T stages. Peritumoral lymph nodes are highly predictive of cancer invasion: the majority of perirectal nodes detected by EUS are metastatic in patients with RC. This is the explanation for the low clinical impact of EUS-guided FNA in staging patients with RC. Moreover, T3 RC is an indication for NAT, independently from N stage, which has no influence on the therapeutic strategy of patients with LARC^[12,75]. EUS-guided FNA seems to offer the most potential for the management of T1-2 stage disease, where the presence of metastatic perirectal lymph nodes modifies the therapeutic strategy. Therefore, its use should be confined to this subgroup of patients^[12,67,75,77]. This indication is confirmed by Levy and colleagues who evaluated the role of EUS guided FNA in N staging of 32 patients with RC and suspicious iliac lymph nodes^[70]. In approximately 50% of cases, the sampled nodes were positive for neoplastic invasion and determined

a change in the therapeutic strategy. Of note, CT scan did not detect half of the lymph nodes which were malignant at EUS-guided FNA. These data support the need to properly investigate the iliac lymph nodes during staging of patients with RC.

EUS in comparison with CT and MRI for staging rectal cancer

In RC, EUS has been compared with digital examination, CT scan and MRI. EUS is superior to rectal digit examination, showing a higher accuracy (91%-92% vs 52%-60%). CT scan is unable to correctly define the single layers of the rectal wall and therefore is not indicated for T staging of RC, while it is crucial for diagnosing distant metastases^[77]. EUS is more accurate than CT scan in loco-regional staging of RC, showing an accuracy rate of 87% for T stage and 62% for N stage, compared to that of CT scan (76% for T stage and 62% for N stage)^[6,63,77]. Similarly, EUS was considered more precise (85% vs 77%) than MRI in determining the T stage of RC^[77]. However, recent technology has allowed MRI to define the status of MRF and subsequently delineate the possible threatened CRM, making this imaging method crucial for loco-regional staging of RC^[44]. A systematic review of 31 articles published over a 20-year period evaluated the role EUS and MRI in loco-regional staging of RC^[46]. While EUS is more useful for staging early RC, with an overall accuracy of 82%, MRI is indicated for staging advanced disease, providing a better definition of both the mesorectum and the MRF. The latter is crucial for choosing the best therapeutic strategy. In another systematic review, Kwok *et al.*^[78] evaluated the role of CT scan, EUS and MRI in the preoperative staging of RC. In determining T stage, EUS was more accurate than CT scan and MRI. The latter, with the adjunct of an endorectal coil, has the same accuracy of EUS for T stage, while it is more precise in determining nodal metastases. Both EUS and MRI with an endorectal coil are limited by the presence of strictures when staging RC. An MRI with a pelvic phased-array coil is not invasive, has a high spatial resolution and appears to be a promising image method for loco-regional staging of RC^[37,79]. Yimei *et al.*^[80] evaluated the reference value to surgeons of both EUS and MRI, reporting that EUS has higher sensitivity ($P = 0.044$) and specificity ($P = 0.039$) than MRI, showing elevated accuracy for early stage RC. This makes EUS staging crucial for the identification of those patients who are suitable for less invasive surgery. On the other hand, MRI is useful for the proper diagnosis of LARC which need to undergo multimodal treatment. MRI has been preferred to EUS because it is better tolerated, can be used in stenotic tumors and it can define the infiltration depth of MRF and assess the CRM. The latter is a crucial information for choosing the best therapeutic strategy. However, Cesmeli *et al.*^[81] point out that EUS is still important in the preoperative staging of early RC, because of its ability to delineate the different layer of the rectal wall, allowing the selection of those patients

suitable for local excision. EUS can also improve N staging by performing FNA, whenever N stage can change the therapeutic strategy^[81]. In a series of 49 patients, EUS and MRI showed similar accuracy (88%), in predicting pathologic CRM of low RC^[82]. Therefore, EUS and MRI are complementary and should be both used for preoperative staging of patients with RC. The fact that staging accuracy is improved by combination of MRI and EUS is supported by the results of a recent study in which the authors compared feasibility and accuracy of both 1.5 Tesla MRI and three-dimensional (3D) EUS for staging patients with RC before and after preoperative chemotherapy^[83]. The stage accuracy by MRI, 3D-EUS and the combination of MRI and 3D-EUS was 65%, 70% and 74%, respectively, before chemotherapy and 65%, 78% and 83%, respectively, after chemotherapy. The post chemotherapy staging by MRI alone was improved by a combination of MRI assessment of the lymph nodes and 3D-EUS assessment of the perirectal tissue penetration ($P = 0.046$). These results confirmed that staging accuracy is improved by combining MRI with EUS.

According to the data of the literature, EUS and MRI are superior for T- staging, while CT and PET/CT are the main stay for metastatic work-up. EUS is superior in staging early cancers and defining the infiltration of the anal sphincter, while MRI is excellent for staging T4 and clarifying both the MRF status and the infiltration of the elevator muscle; CT and EUS are complementary, rather than competitive in loco-regional and distant staging of RC^[84-86]. Therefore, the best approach for RC is the combination of all different imaging methods, which are complementary: they should be utilized according to the clinical condition of the patient, the availability of each single test and the personal preference. Cost-benefit studies have demonstrated that the most cost-effective association of imaging methods is EUS plus CT scan^[87].

Accuracy of eUS in staging locally advanced rectal cancer after chemoradiation

Loco-regional staging of RC after NAT is affected by local effects of the treatment which determines peritumoral inflammation, edema, necrosis, and fibrosis of the neoplastic tissue. This reduces the accuracy of EUS, leading to overstaging errors (Table 7)^[88-90]. EUS staging of RC after NAT is inaccurate, as shown by Vanagunas and colleagues in a series of 82 patients with LARC^[90]. After NAT, EUS correctly predicted complete response to chemoradiation in only 63% of cases and its overall accuracy for pathologic T-stage was 48%, with 14% of understaging and 38% of overstaging. These data suggest that EUS staging of RC after NAT is inaccurate, and its routine use for restaging patients should be discouraged. Similarly, Marone *et al.*^[91] and Maor *et al.*^[92], demonstrated that EUS restaging of LARC after NAT has low accuracy. Both studies compared two groups of patients with LARC: one operated on without receiving NAT and another one who underwent surgery after NAT. The results of the studies were similar, showing

Table 7 Accuracy of endoscopic ultrasound in staging locally advanced rectal cancer after chemo-radiation

Ref.	Year	No.	T	Mistakes		N
				Over	Under	
Vanagunas <i>et al</i> ^[90]	2004	82	48%	38%	14%	77%
Mao <i>et al</i> ^[92]	2006	25	72%	8%	12%	80%
Radovaanovic <i>et al</i> ^[94]	2008	44	75%	18%	7%	68%
Marone <i>et al</i> ^[91]	2011	85	61%	28%	7%	59%
Mean		236	64%	23%	10%	71%
Range			48%-75%	8%-38%	7%-14%	59%-80%

uTN stage compared with pTN stage; Previous neoadjuvant therapy (NAT). Over: Overstaging; Under: Understaging.

that EUS restaging of LARC after NAT has low accuracy (60%-70%) and is able to predict a complete response in only 50% of cases. Further confirmation of this low accuracy came from a study where the authors compared sensitivity and specificity of EUS and MRI, in patients with LARC after NAT^[93]. Both EUS and MRI had low accuracy (46% vs 44%) for T stage of LARC after NAT. Better accuracy of EUS restaging was reported by Radovanovic and colleagues who demonstrated that EUS has an accuracy of 75% for T stage after NAT, with 18% of overstaging and 7% of understaging^[94]. The majority of overstaging occurred in patients with uT3 tumors, eventually found to have pT0-pT2 RC. EUS was able to correctly stage only one of the patients who had complete response after NAT. Despite the fact that EUS restaging accuracy for LARC was higher, the results of this study confirm that EUS is not useful after NAT.

EUS DIAGNOSIS OF LOCAL RECURRENCE IN PATIENTS OPERATED ON FOR RC

After surgery, local recurrence of LARC has an incidence of about 25%, which decreases to 10%, if NAT has been administered before surgery (10%). The risk of local recurrence is strictly related to T stage and it is higher for more advanced T stages, occurring mostly in the first two postoperative years^[95-97]. Early identification of local recurrence and its immediate treatment could potentially improve patients survival. EUS has a high sensitivity, but low specificity in defining local recurrences. A limitation of EUS is its inability to clearly differentiate postoperative changes and benign lesions from cancer recurrence^[95-97].

EUS-guided FNA increases the specificity of EUS (57% vs 97%). To date, there are no guidelines which define the role of EUS in the follow-up of patients operated on for RC, since there are no clear data that echoendoscopic follow-up and/or EUS-guided FNA influence patients survival after surgery for RC^[95-97].

Future perspectives

The recent development of new technology for EUS generates novel applications for echoendoscopic diagnosis and staging of gastrointestinal tumors. Tridimen-

sional EUS (3D-EUS) seems to improve the spatial visualization of RC allowing better evaluation of tumor resectability^[98]. 3D-EUS is more accurate than 2D-EUS and CT scan in T staging of RC, for which the three imaging methods have an accuracy of 78%, 69% and 57%, respectively^[64]. 3D-EUS visualization of the outer margin of the rectal wall is well related to neoplastic infiltration and metastatic nodal invasion diagnosed by pathological examination of the surgical specimen. Some data suggest that 3D-EUS allows correct visualization of MRF, which was not well delineated by 2D-EUS. Proper measurements of the tumoral area before and after NAT could be a useful criterion for evaluating the response of RC to NAT^[98-100].

Elastography is a new technique which has been recently added to the armamentarium of EUS and allows measurement of tissue elasticity useful to differentiate normal from tumoral tissue. Preliminary data have shown that simultaneous elastography during EUS improves its accuracy for T staging of RC^[98]. Finally, EUS with contrast medium administration (contrast harmonic EUS or CH-EUS) and simultaneous Doppler visualization allows the study of tumoral vascularization and irroration. These data are useful for the evaluation of both tumoral response to NAT and efficacy of anti-angiogenic treatments, because this combination of techniques shows accurately those changes in the vascular pattern of RC which reflect its response to therapy. Miyata *et al*^[101] evaluated the micro-vascularization of lymph nodes by means of CH-EUS in order to differentiate benign from malignant nodes: sensitivity, specificity, and accuracy of CH-EUS for malignant lesions were 95%, 97%, and 97%, respectively. These data show that CH-EUS is accurate in detecting minimal changes of tumoral vascularization in lymph nodes which harbor neoplastic invasion. This information could address the correct use of FNA-guided EUS, whenever it is needed^[101,102]. To date, there are still little data on the clinical application of simultaneous use of these new methods together with standard EUS. Therefore, further clinical trials are needed for the evaluation of indication, accuracy, clinical impact and limitation of CH-EUS and Doppler-EUS.

CONCLUSION

Prognosis of patients with RC is strictly dependent from the stage of the disease at the time of diagnosis. Multidisciplinary approach to patients with RC is the standard of care in order to reduce local recurrences and improve survival outcomes. A strong cooperation among members of a multidisciplinary team is mandatory to improve patients outcomes, because the latter are strictly dependent from the chosen therapeutic strategy. This is the results of an accurate loco-regional staging, especially if metastatic disease has been excluded. CT scan, MRI, PET are the imaging method used for staging RC and give information on both loco-regional and distant disease. In the last decades, EUS has been

used in combination with these imaging methods for staging RC in order to better define both the T stage and the involvement of loco-regional lymph nodes. EUS has significant clinical impact on patients with RC, allowing to identify those who are candidate for local excision and/or direct surgery, without receiving NAT. LARC is well defined by EUS, even if the identification of both MRF and possible threatened CRM is more precisely obtained by MRI. The latter lacks accuracy for mid - low anterior RC, which could be better staged by EUS, as recent data suggested. Therefore, EUS and MRI are complementary and they should be used simultaneously, with a significant increase of the overall accuracy for the T stage of RC. EUS is superior in identifying early cancers and infiltration of anal sphincter, while MRI is excellent in recognizing T4, in relationship to MRF infiltration of the elevator muscle. While EUS and MRI are superior for T- staging, CT and PET/CT are the main stay for metastatic work-up.

Restaging after NAT is mandatory for establishing a correct prognosis of patients with RC and choosing the most effective treatment. This should be tailored according to the results of NAT, whose experimental drugs can be tested in clinical trials and evaluated by means of restaging RC. The latter is not performed by means of EUS because this imaging method has low accuracy in restaging RC, due to the difficulty in differentiating inflammation and tissue fibrosis from actual residual cancer.

EUS has low sensitivity, but high specificity in diagnosing local recurrences in patients operated on for RC, because it is unable to differentiate perianastomotic surgical changes from recurrent cancer. In this case, EUS-guided FNA increases specificity, but its use in clinical practice has not been standardized. Probably, high resolution images and guided FNA are the best combination for improving EUS accuracy in naive and recurrent RC.

Technological improvements, like elastography, contrast medium administration, high ultrasonographic frequencies and 3D, will certainly improve EUS accuracy and broaden its clinic use; however there is a need for further studies which should confirm the potential of these new technologies.

In conclusion, accurate EUS staging is crucial for the best treatment of each single patient with RC and especially LARC, because patients can be understaged or overstaged, with subsequent mistreatments.

REFERENCES

- 1 **Glimelius B**, Pahlman L, Cervantes A. Rectal cancer: ESMO Clinical Practice Guidelines for diagnosis, treatment and follow-up. *Ann Oncol* 2010; **21** Suppl 5: v82-v86 [PMID: 20555109 DOI: 10.1093/annonc/mdq170]
- 2 **Avallone A**, Aloj L, Delrio P, Pecori B, Leone A, Tatangelo F, Perri F, Petrillo A, Scott N, Budillon A. Multidisciplinary approach to rectal cancer: are we ready for selective treatment strategies? *Anticancer Agents Med Chem* 2013; **13**: 852-860 [PMID: 23272969]
- 3 **Greene FL**, Page DL, Fleming ID, editors. *AJCC Cancer Staging Manual*. New York, NY: Springer, 2010
- 4 **Sobin LH**, Wittekind C, editors. *TNM: Classification of Malignant Tumours*. New York, NY: Wiley-Liss, 2002
- 5 **Marone P**. Ecoendoscopia: I tumori del retto: stadiazione con US endorettale, valutazione dopo radio-chemioterapia neoadiuvante, identificazione della recidiva. In Catalano O, Siani S eds. *Ecografia in oncologia: testo atlante di ultrasonografia diagnostica ed interventistica dei tumori*. *Springer Italia* 2007: 313-318
- 6 **Rösch T**. Endosonography of the colon and rectum. In: *Gastrointestinal Endosonography*. Philadelphia: W.B Saunders Company, 1999: 271-277
- 7 **Puli SR**, Reddy JB, Bechtold ML, Choudhary A, Antillon MR, Brugge WR. Accuracy of endoscopic ultrasound to diagnose nodal invasion by rectal cancers: a meta-analysis and systematic review. *Ann Surg Oncol* 2009; **16**: 1255-1265 [PMID: 19219506 DOI: 10.1245/s10434-009-0337-4]
- 8 **Menzel J**, Domschke W. Gastrointestinal miniprobe sonography: the current status. *Am J Gastroenterol* 2000; **95**: 605-616 [PMID: 10710047 DOI: 10.1111/j.1572-0241.2000.01832.x]
- 9 **Thomas J**, Savides S. Endoscopic Ultrasound Staging of Rectal Cancer. In Van Dam J and Sivak M eds, *Gastrointestinal Endosonography*, Philadelphia: W.B Saunders, 1999: 279-289
- 10 **Caletti G**. The gut wall. In Van Dam J and Sivak M eds, *Gastrointestinal Endosonography*, Philadelphia: W.B Saunders, 1999: 103-114
- 11 **Gleeson FC**. EUS in rectal cancer: anorectal anatomy. In: Hawes RH, Fockens P, Varadarajulu S eds, *Endosonography 3rd edition*, Philadelphia: WB Saunders, 2015: 260-268
- 12 **Harewood GC**, Wiersema MJ, Nelson H, Maccarty RL, Olson JE, Clain JE, Ahlquist DA, Jondal ML. A prospective, blinded assessment of the impact of preoperative staging on the management of rectal cancer. *Gastroenterology* 2002; **123**: 24-32 [PMID: 12105829 DOI: 10.1053/gast.2002.34163]
- 13 **Saitoh N**, Okui K, Sarashina H, Suzuki M, Arai T, Nunomura M. Evaluation of echographic diagnosis of rectal cancer using intrarectal ultrasonic examination. *Dis Colon Rectum* 1986; **29**: 234-242 [PMID: 3512199]
- 14 **Feifel G**, Hildebrandt U, Dhom G. Assessment of depth of invasion in rectal cancer by endosonography. *Endoscopy* 1987; **19**: 64-67 [PMID: 3552640]
- 15 **Yamashita Y**, Machi J, Shirouzu K, Morotomi T, Isomoto H, Kakegawa T. Evaluation of endorectal ultrasound for the assessment of wall invasion of rectal cancer. Report of a case. *Dis Colon Rectum* 1988; **31**: 617-623 [PMID: 3042302]
- 16 **Beynon J**, Mortensen NJ, Rigby HS. Rectal endosonography, a new technique for the preoperative staging of rectal carcinoma. *Eur J Surg Oncol* 1988; **14**: 297-309 [PMID: 3044832]
- 17 **Rifkin MD**, Ehrlich SM, Marks G. Staging of rectal carcinoma: prospective comparison of endorectal US and CT. *Radiology* 1989; **170**: 319-322 [PMID: 2643135]
- 18 **Hildebrandt U**, Klein T, Feifel G, Schwarz HP, Koch B, Schmitt RM. Endosonography of pararectal lymph nodes. In vitro and in vivo evaluation. *Dis Colon Rectum* 1990; **33**: 863-868 [PMID: 2209276 DOI: 10.1007/BF0205192]
- 19 **Tio TL**, Coene PP, van Delden OM, Tytgat GN. Colorectal carcinoma: preoperative TNM classification with endosonography. *Radiology* 1991; **179**: 165-170 [PMID: 2006270 DOI: 10.1148/radiology]
- 20 **Katsura Y**, Yamada K, Ishizawa T, Yoshinaka H, Shimazu H. Endorectal ultrasonography for the assessment of wall invasion and lymph node metastasis in rectal cancer. *Dis Colon Rectum* 1992; **35**: 362-368 [PMID: 1582359 DOI: 10.1007/BF02048115]
- 21 **Glaser F**, Kuntz C, Schlag P, Herfarth C. Endorectal ultrasound for control of preoperative radiotherapy of rectal cancer. *Ann Surg* 1993; **217**: 64-71 [PMID: 8424703]
- 22 **Herzog U**, von Flüe M, Tondelli P, Schuppisser JP. How accurate is endorectal ultrasound in the preoperative staging of rectal cancer? *Dis Colon Rectum* 1993; **36**: 127-134 [PMID: 8425415 DOI: 10.1007/BF02051167]
- 23 **Cho E**, Nakajima M, Yasuda K, Ashihara T, Kawai K. Endoscopic

- ultrasonography in the diagnosis of colorectal cancer invasion. *Gastrointest Endosc* 1993; **39**: 521-527 [PMID: 8365600]
- 24 **Thaler W**, Watzka S, Martin F, La Guardia G, Psenner K, Bonatti G, Fichtel G, Egarter-Vigl E, Marzoli GP. Preoperative staging of rectal cancer by endoluminal ultrasound vs. magnetic resonance imaging. Preliminary results of a prospective, comparative study. *Dis Colon Rectum* 1994; **37**: 1189-1193 [PMID: 7995142 DOI: 10.1007/BF02257780]
 - 25 **Nielsen MB**, Qvistau S, Pedersen JF, Christiansen J. Endosonography for preoperative staging of rectal tumours. *Acta Radiol* 1996; **37**: 799-803 [PMID: 8915296]
 - 26 **Sailer M**, Leppert R, Kraemer M, Fuchs KH, Thiede A. The value of endorectal ultrasound in the assessment of adenomas, T1- and T2-carcinomas. *Int J Colorectal Dis* 1997; **12**: 214-219 [PMID: 9272450]
 - 27 **Nishimori H**, Sasaki K, Hirata K, Hirata K, Natori H. The value of endoscopic ultrasonography in preoperative evaluation of rectal cancer. *Int Surg* 1998; **83**: 157-160 [PMID: 9851336]
 - 28 **Norton SA**, Thomas MG. Staging of rectosigmoid neoplasia with colonoscopic endoluminal ultrasonography. *Br J Surg* 1999; **86**: 942-946 [PMID: 10417570]
 - 29 **Kim NK**, Kim MJ, Yun SH, Sohn SK, Min JS. Comparative study of transrectal ultrasonography, pelvic computerized tomography, and magnetic resonance imaging in preoperative staging of rectal cancer. *Dis Colon Rectum* 1999; **42**: 770-775 [PMID: 10378601 DOI: 10.1007/BF02236933]
 - 30 **Marone P**, Petruccio F, de Bellis M, Battista Rossi G, Tempesta A. Role of endoscopic ultrasonography in the staging of rectal cancer: a retrospective study of 63 patients. *J Clin Gastroenterol* 2000; **30**: 420-424 [PMID: 10875472 DOI: 10.1097/00004836-200006000-00013]
 - 31 **Akasu T**, Kondo H, Moriya Y, Sugihara K, Gotoda T, Fujita S, Muto T, Kakizoe T. Endorectal ultrasonography and treatment of early stage rectal cancer. *World J Surg* 2000; **24**: 1061-1068 [PMID: 11036283 DOI: 10.1007/s002680010151]
 - 32 **Garcia-Aguilar J**, Pollack J, Lee SH, Hernandez de Anda E, Mellgren A, Wong WD, Finne CO, Rothenberger DA, Madoff RD. Accuracy of endorectal ultrasonography in preoperative staging of rectal tumors. *Dis Colon Rectum* 2002; **45**: 10-15 [PMID: 11786756 DOI: 10.1007/s10350-004-6106-3]
 - 33 **Marusch F**, Koch A, Schmidt U, Zippel R, Kuhn R, Wolff S, Pross M, Wierth A, Gastinger I, Lippert H. Routine use of transrectal ultrasound in rectal carcinoma: results of a prospective multicenter study. *Endoscopy* 2002; **34**: 385-390 [PMID: 11972270 DOI: 10.1055/s-2002-25292]
 - 34 **Kauer WK**, Prantl L, Dittler HJ, Siewert JR. The value of endosonographic rectal carcinoma staging in routine diagnostics: a 10-year analysis. *Surg Endosc* 2004; **18**: 1075-1078 [PMID: 15156388 DOI: 10.1007/s00464-003-9088-7]
 - 35 **Vila JJ**, Jiménez FJ, Irisarri R, Martínez A, Amorena E, Borda F. Rectal cancer staging with endoscopic ultrasonography: correlation with pathological staging. *Rev Esp Enferm Dig* 2007; **99**: 132-137 [PMID: 17516825]
 - 36 **Landmann RG**, Wong WD, Hoepfl J, Shia J, Guillem JG, Temple LK, Paty PB, Weiser MR. Limitations of early rectal cancer nodal staging may explain failure after local excision. *Dis Colon Rectum* 2007; **50**: 1520-1525 [PMID: 17674104 DOI: 10.1007/s10350-007-9019-0]
 - 37 **Halefoglu AM**, Yildirim S, Avlanmis O, Sakiz D, Baykan A. Endorectal ultrasonography versus phased-array magnetic resonance imaging for preoperative staging of rectal cancer. *World J Gastroenterol* 2008; **14**: 3504-3510 [PMID: 18567078 DOI: 10.3748/wjg.14.3504]
 - 38 **Lin S**, Luo G, Gao X, Shan H, Li Y, Zhang R, Li J, He L, Wang G, Xu G. Application of endoscopic sonography in preoperative staging of rectal cancer: six-year experience. *J Ultrasound Med* 2011; **30**: 1051-1057 [PMID: 21795480]
 - 39 **Fernández-Esparrach G**, Ayuso-Colella JR, Sendino O, Pagés M, Cuatrecasas M, Pellisé M, Maurel J, Ayuso-Colella C, González-Suárez B, Llach J, Castells A, Ginés A. EUS and magnetic resonance imaging in the staging of rectal cancer: a prospective and comparative study. *Gastrointest Endosc* 2011; **74**: 347-354 [PMID: 21802588 DOI: 10.1016/j.gie.2011.03.1257]
 - 40 **Ünsal B**, Alper E, Baydar B, Arabul M, Aslan F, Çelik M, Buyraç Z, Akça S. The efficacy of endoscopic ultrasonography in local staging of rectal tumors. *Turk J Gastroenterol* 2012; **23**: 530-534 [PMID: 23161297]
 - 41 **Zhu J**, Huang PT, Ding KF, Zhang X, Liu CM, Liu XM, Li BZ, Cai SR, Zheng S. Clinical value of radial endorectal ultrasound in the assessment of preoperative staging of rectal carcinoma. *Zhonghua Zhongliu Zazhi* 2013; **35**: 148-153 [PMID: 23714673 DOI: 10.3760/cma.j.issn.0253-3766.2013.02.017]
 - 42 **Golfieri R**, Giampalma E, Leo P, Colecchia A, Selli S, Poggioli G, Gandolfi L, Gozzetti G, Trebbi F, Russo A. Comparison of magnetic resonance (0,5 T), computed tomography, and endorectal ultrasonography in the preoperative staging of neoplasms of the rectum-sigma. Correlation with surgical and anatomopathologic findings. *Radiol Med* 1993; **85**: 773-783 [PMID: 8337435]
 - 43 **Kulig J**, Richter P, Gurda-Duda A, Gach T, Klek S. The role and value of endorectal ultrasonography in diagnosing T1 rectal tumors. *Ultrasound Med Biol* 2006; **32**: 469-472 [PMID: 16616592 DOI: 10.1016/j.ultrasmedbio.2005.12.014]
 - 44 **Ho ML**, Liu J, Narra V. Magnetic resonance imaging of rectal cancer. *Clin Colon Rectal Surg* 2008; **21**: 178-187 [PMID: 20011416 DOI: 10.1055/s-2008-1080997]
 - 45 **Cârțână ET**, Pârnu D, Săftoiu A. Endoscopic ultrasound: current role and future perspectives in managing rectal cancer patients. *J Gastrointest Liver Dis* 2011; **20**: 407-413 [PMID: 22187707]
 - 46 **Skandarajah AR**, Tjandra JJ. Preoperative loco-regional imaging in rectal cancer. *ANZ J Surg* 2006; **76**: 497-504 [PMID: 16768778 DOI: 10.1111/j.1445-2197.2006.03744.x]
 - 47 **Puli SR**, Bechtold ML, Reddy JB, Choudhary A, Antillon MR, Brugge WR. How good is endoscopic ultrasound in differentiating various T stages of rectal cancer? Meta-analysis and systematic review. *Ann Surg Oncol* 2009; **16**: 254-265 [PMID: 19018597 DOI: 10.1245/s10434-008-0231-5]
 - 48 **Puli SR**, Bechtold ML, Reddy JB, Choudhary A, Antillon MR. Can endoscopic ultrasound predict early rectal cancers that can be resected endoscopically? A meta-analysis and systematic review. *Dig Dis Sci* 2010; **55**: 1221-1229 [PMID: 19517233 DOI: 10.1007/s10620-009-0862-9]
 - 49 **Marusch F**, Ptok H, Sahn M, Schmidt U, Ridwelski K, Gastinger I, Lippert H. Endorectal ultrasound in rectal carcinoma--do the literature results really correspond to the realities of routine clinical care? *Endoscopy* 2011; **43**: 425-431 [PMID: 21234855 DOI: 10.1055/s-0030-1256111]
 - 50 **Kneist W**, Terzic A, Burghardt J, Heintz A, Junginger T. Selection of patients with rectal tumors for local excision based on preoperative diagnosis. Results of a consecutive evaluation study of 552 patients. *Chirurg* 2004; **75**: 168-175 [PMID: 14991179]
 - 51 **Glancy DG**, Pullyblank AM, Thomas MG. The role of colonoscopic endoanal ultrasound scanning (EUS) in selecting patients suitable for resection by transanal endoscopic microsurgery (TEM). *Colorectal Dis* 2005; **7**: 148-150 [PMID: 15720352 DOI: 10.1111/j.1463-1318.2004.00728.x]
 - 52 **Zorcolo L**, Fantola G, Cabras F, Marongiu L, D'Alia G, Casula G. Preoperative staging of patients with rectal tumors suitable for transanal endoscopic microsurgery (TEM): comparison of endorectal ultrasound and histopathologic findings. *Surg Endosc* 2009; **23**: 1384-1389 [PMID: 19263149 DOI: 10.1007/s00464-009-0349-y]
 - 53 **Rösch T**. *Ecografia endoscopica*. Classen M, editor. In: *Endoscopia Gastroenterologica*. Roma: Verducci Editori, 2004: 199-220
 - 54 **Hulsmans FJ**, Tio TL, Fockens P, Bosma A, Tytgat GN. Assessment of tumor infiltration depth in rectal cancer with transrectal sonography: caution is necessary. *Radiology* 1994; **190**: 715-720 [PMID: 8115617 DOI: 10.1148/radiology.190.3.8115617]
 - 55 **Maier AG**, Barton PP, Neuhold NR, Herbst F, Teleky BK, Lechner GL. Peritumoral tissue reaction at transrectal US as a possible cause of overstaging in rectal cancer: histopathologic correlation. *Radiology* 1997; **203**: 785-789 [PMID: 9169705 DOI: 10.1148/

- radiology.203.3.9169705]
- 56 **Harewood GC**, Kumar KS, Clain JE, Levy MJ, Nelson H. Clinical implications of quantification of mesorectal tumor invasion by endoscopic ultrasound: All T3 rectal cancers are not equal. *J Gastroenterol Hepatol* 2004; **19**: 750-755 [PMID: 15209620 DOI: 10.1111/j.1440-1746.2004.03356.x]
 - 57 **Esclapez P**, Garcia-Granero E, Flor B, García-Botello S, Cervantes A, Navarro S, Lledó S. Prognostic heterogeneity of endosonographic T3 rectal cancer. *Dis Colon Rectum* 2009; **52**: 685-691 [PMID: 19404075 DOI: 10.1007/DCR.0b013e31819ed03d]
 - 58 **McClave SA**, Jones WF, Woolfolk GM, Schrodt GR, Wiersema MJ. Mistakes on EUS staging of colorectal carcinoma: error in interpretation or deception from innate pathologic features? *Gastrointest Endosc* 2000; **51**: 682-689 [PMID: 10840300 DOI: 10.1067/mge.2000.106310]
 - 59 **Akasu T**, Sugihara K, Moriya Y, Fujita S. Limitations and pitfalls of transrectal ultrasonography for staging of rectal cancer. *Dis Colon Rectum* 1997; **40**: S10-S15 [PMID: 9378002 DOI: 10.1007/BF02062014]
 - 60 **Marone P**, de Bellis M, Rossi GB, Avallone A, Delrio P, Tatangelo F, Di Nardo G, Sannino S, Cesario S, Voltura C, Tempesta AM. Staging errors in the preoperative staging and restaging of patients with rectal cancer. *Digestive Liver Diseases* 2007; **39** (Supp 2): S280
 - 61 **Granero-Castro P**, Muñoz E, Frasson M, García-Granero A, Esclapez P, Campos S, Flor-Lorente B, Garcia-Granero E. Evaluation of mesorectal fascia in mid and low anterior rectal cancer using endorectal ultrasound is feasible and reliable: a comparison with MRI findings. *Dis Colon Rectum* 2014; **57**: 709-714 [PMID: 24807595 DOI: 10.1097/DCR.0000000000000096]
 - 62 **Bhutani MS**. Recent developments in the role of endoscopic ultrasonography in diseases of the colon and rectum. *Curr Opin Gastroenterol* 2007; **23**: 67-73 [PMID: 17133088 DOI: 10.1097/MOG.0b013e328011630b]
 - 63 **Savides TJ**, Master SS. EUS in rectal cancer. *Gastrointest Endosc* 2002; **56**: S12-S18 [PMID: 12297742]
 - 64 **Kim JC**, Kim HC, Yu CS, Han KR, Kim JR, Lee KH, Jang SJ, Lee SS, Ha HK. Efficacy of 3-dimensional endorectal ultrasonography compared with conventional ultrasonography and computed tomography in preoperative rectal cancer staging. *Am J Surg* 2006; **192**: 89-97 [PMID: 16769283 DOI: 10.1016/j.amjsurg.2006.01.054]
 - 65 **Catalano MF**, Sivak MV, Rice T, Gragg LA, Van Dam J. Endosonographic features predictive of lymph node metastasis. *Gastrointest Endosc* 1994; **40**: 442-446 [PMID: 7926534 DOI: 10.1016/S0016-5107(94)70206-3]
 - 66 **Bhutani MS**, Hawes RH, Hoffman BJ. A comparison of the accuracy of echo features during endoscopic ultrasound (EUS) and EUS-guided fine-needle aspiration for diagnosis of malignant lymph node invasion. *Gastrointest Endosc* 1997; **45**: 474-479 [PMID: 9199903 DOI: 10.1016/S0016-5107(97)70176-7]
 - 67 **Gleeson FC**, Clain JE, Papachristou GI, Rajan E, Topazian MD, Wang KK, Levy MJ. Prospective assessment of EUS criteria for lymphadenopathy associated with rectal cancer. *Gastrointest Endosc* 2009; **69**: 896-903 [PMID: 18718586 DOI: 10.1016/j.gie.2008.04.051]
 - 68 **Krajewski KM**, Kane RA. Ultrasound staging of rectal cancer. *Semin Ultrasound CT MR* 2008; **29**: 427-432 [PMID: 19166040 DOI: 10.1053/j.sult.2008.10.005]
 - 69 **Moriya Y**, Sugihara K, Akasu T, Fujita S. Importance of extended lymphadenectomy with lateral node dissection for advanced lower rectal cancer. *World J Surg* 1997; **21**: 728-732 [PMID: 9276704 DOI: 10.1007/s002689900298]
 - 70 **Levy M**, Alberts SR, Clain JE, Jonathan E. Clain, Amy C. Clayton, Elizabeth Rajan, Mark D Topazian, Kenneth K. Wang, Maurits J. Wiersema. Endoscopic ultrasound guided fine needle aspiration (EUS-FNA) detection of malignant iliac nodes in rectal cancer. *Gastrointest Endosc* 2006; **63**: AB97
 - 71 **Harada N**, Hamada S, Kubo H, Oda S, Chijiwa Y, Kabemura T, Maruoka A, Akahoshi K, Yao T, Nawata H. Preoperative evaluation of submucosal invasive colorectal cancer using a 15-MHz ultrasound miniprobe. *Endoscopy* 2001; **33**: 237-240 [PMID: 11293756 DOI: 10.1055/s-2001-12798]
 - 72 **Hurlstone DP**, Brown S, Cross SS, Shorthouse AJ, Sanders DS. Endoscopic ultrasound miniprobe staging of colorectal cancer: can management be modified? *Endoscopy* 2005; **37**: 710-714 [PMID: 16032488 DOI: 10.1055/s-2005-870142]
 - 73 **Gall TM**, Markar SR, Jackson D, Haji A, Faiz O. Mini-probe ultrasonography for the staging of colon cancer: a systematic review and meta-analysis. *Colorectal Dis* 2014; **16**: O1-O8 [PMID: 24119196 DOI: 10.1111/codi.12445]
 - 74 **Knight CS**, Eloubeidi MA, Crowe R, Jhala NC, Jhala DN, Chhieng DC, Eltoum IA. Utility of endoscopic ultrasound-guided fine-needle aspiration in the diagnosis and staging of colorectal carcinoma. *Diagn Cytopathol* 2013; **41**: 1031-1037 [PMID: 21932358 DOI: 10.1002/dc.21804]
 - 75 **Wiersema MJ**, Harewood GC. Endoscopic ultrasound for rectal cancer. *Gastroenterol Clin North Am* 2002; **31**: 1093-1105 [PMID: 12489280 DOI: 10.1016/S0889-8553(02)00050-X]
 - 76 **Shami VM**, Parmar KS, Waxman I. Clinical impact of endoscopic ultrasound and endoscopic ultrasound-guided fine-needle aspiration in the management of rectal carcinoma. *Dis Colon Rectum* 2004; **47**: 59-65 [PMID: 14719152 DOI: 10.1007/s10350-003-0001-1]
 - 77 **Samee A**, Selvasekar CR. Current trends in staging rectal cancer. *World J Gastroenterol* 2011; **17**: 828-834 [PMID: 21412492 DOI: 10.3748/wjg.v17.i7.828]
 - 78 **Kwok H**, Bissett IP, Hill GL. Preoperative staging of rectal cancer. *Int J Colorectal Dis* 2000; **15**: 9-20 [PMID: 10766086 DOI: 10.1007/s003840050002]
 - 79 **Bipat S**, Glas AS, Slors FJ, Zwinderman AH, Bossuyt PM, Stoker J. Rectal cancer: local staging and assessment of lymph node involvement with endoluminal US, CT, and MR imaging--a meta-analysis. *Radiology* 2004; **232**: 773-783 [PMID: 15273331]
 - 80 **Yimei J**, Ren Z, Lu X, Huan Z. A comparison between the reference values of MRI and EUS and their usefulness to surgeons in rectal cancer. *Eur Rev Med Pharmacol Sci* 2012; **16**: 2069-2077 [PMID: 23280021]
 - 81 **Cesmeli E**. Anorectal staging: is EUS necessary? *Minerva Med* 2014; **105**: 423-436 [PMID: 25000219]
 - 82 **Granero-Castro P**, Muñoz E, Frasson M, García-Granero A, Esclapez P, Campos S, Flor-Lorente B, Garcia-Granero E. Evaluation of mesorectal fascia in mid and low anterior rectal cancer using endorectal ultrasound is feasible and reliable: a comparison with MRI findings. *Dis Colon Rectum* 2014; **57**: 709-14 [DOI: 10.1097/DCR.0000000000000096]
 - 83 **Swartling T**, Kålebo P, Derwinger K, Gustavsson B, Kurlberg G. Stage and size using magnetic resonance imaging and endosonography in neoadjuvantly-treated rectal cancer. *World J Gastroenterol* 2013; **19**: 3263-3271 [PMID: 23745028 DOI: 10.3748/wjg.v19.i21.3263]
 - 84 **Aljebreen AM**, Azzam NA, Alzubaidi AM, Alsharqawi MS, Altraiki TA, Alharbi OR, Almadi MA. The accuracy of multi-detector row computerized tomography in staging rectal cancer compared to endoscopic ultrasound. *Saudi J Gastroenterol* 2013; **19**: 108-112 [PMID: 23680707 DOI: 10.4103/1319-3767.111950]
 - 85 **Liang TY**, Anil G, Ang BW. Imaging paradigms in assessment of rectal carcinoma: loco-regional and distant staging. *Cancer Imaging* 2012; **12**: 290-303 [PMID: 23033451 DOI: 10.1102/1470-7330.2012.0034]
 - 86 **Samdani T**, Garcia-Aguilar J. Imaging in rectal cancer: magnetic resonance imaging versus endorectal ultrasonography. *Surg Oncol Clin N Am* 2014; **23**: 59-77 [PMID: 24267166 DOI: 10.1016/j.soc.2013.09.011]
 - 87 **Harewood GC**, Wiersema MJ. Cost-effectiveness of endoscopic ultrasonography in the evaluation of proximal rectal cancer. *Am J Gastroenterol* 2002; **97**: 874-882 [PMID: 12003422]
 - 88 **Edelman BR**, Weiser MR. Endorectal ultrasound: its role in the diagnosis and treatment of rectal cancer. *Clin Colon Rectal Surg* 2008; **21**: 167-177 [PMID: 20011415 DOI: 10.1055/s-2008-1080996]
 - 89 **Napoleon B**, Pujol B, Berger F, Valette PJ, Gerard JP, Souquet JC. Accuracy of endosonography in the staging of rectal cancer treated

- by radiotherapy. *Br J Surg* 1991; **78**: 785-788 [PMID: 1873701 DOI: 10.1002/bjs.1800780707]
- 90 **Vanagunas A**, Lin DE, Stryker SJ. Accuracy of endoscopic ultrasound for restaging rectal cancer following neoadjuvant chemoradiation therapy. *Am J Gastroenterol* 2004; **99**: 109-112 [PMID: 14687151 DOI: 10.1046/j.1572-0241.2003.04019.x]
- 91 **Marone P**, de Bellis M, Avallone A, Delrio P, di Nardo G, D' Angelo V, Tatangelo F, Pecori B, Di Girolamo E, Iaffaioli V, Lastoria S, Battista Rossi G. Accuracy of endoscopic ultrasound in staging and restaging patients with locally advanced rectal cancer undergoing neoadjuvant chemoradiation. *Clin Res Hepatol Gastroenterol* 2011; **35**: 666-670 [PMID: 21782549 DOI: 10.1016/j.clinre.2011.05.012]
- 92 **Maor Y**, Nadler M, Barshack I, Zmora O, Koller M, Kundel Y, Fidder H, Bar-Meir S, Avidan B. Endoscopic ultrasound staging of rectal cancer: diagnostic value before and following chemoradiation. *J Gastroenterol Hepatol* 2006; **21**: 454-458 [PMID: 16509874 DOI: 10.1111/j.1440-1746.2005.03927.x]
- 93 **Mezzi G**, Arcidiacono PG, Carrara S, Perri F, Petrone MC, De Cobelli F, Gusmini S, Staudacher C, Del Maschio A, Testoni PA. Endoscopic ultrasound and magnetic resonance imaging for restaging rectal cancer after radiotherapy. *World J Gastroenterol* 2009; **15**: 5563-5567 [PMID: 19938195 DOI: 10.3748/wjg.15.5563]
- 94 **Radovanovic Z**, Breberina M, Petrovic T, Golubovic A, Radovanovic D. Accuracy of endorectal ultrasonography in staging locally advanced rectal cancer after preoperative chemoradiation. *Surg Endosc* 2008; **22**: 2412-2415 [PMID: 18622554 DOI: 10.1007/s00464-008-0037-3]
- 95 **Löhnert MS**, Doniec JM, Henne-Bruns D. Effectiveness of endoluminal sonography in the identification of occult local rectal cancer recurrences. *Dis Colon Rectum* 2000; **43**: 483-491 [PMID: 10789743 DOI: 10.1007/BF02237191]
- 96 **Hünerbein M**, Totkas S, Moesta KT, Ulmer C, Handke T, Schlag PM. The role of transrectal ultrasound-guided biopsy in the postoperative follow-up of patients with rectal cancer. *Surgery* 2001; **129**: 164-169 [PMID: 11174709 DOI: 10.1067/msy.2001.110428]
- 97 **Marone P**, De Bellis M, Rossi GB, Tempesta AM. Effectiveness of endoscopic ultrasonography in the follow up of patients operated on for rectal cancer. *Digestive and Liver Diseases* 2001; **33**: S143
- 98 **Săftoiu A**. State-of-the-art imaging techniques in endoscopic ultrasound. *World J Gastroenterol* 2011; **17**: 691-696 [PMID: 21390138 DOI: 10.3748/wjg.v17.i6.691]
- 99 **Săftoiu A**, Gheonea DI. Tridimensional (3D) endoscopic ultrasound - a pictorial review. *J Gastrointestin Liver Dis* 2009; **18**: 501-505 [PMID: 20076829]
- 100 **Giovannini M**, Borries E, Pesenti C, Moutardier V, Lelong B, Delpéro JR. Three-dimensional endorectal ultrasound using a new freehand software program: results in 35 patients with rectal cancer. *Endoscopy* 2006; **38**: 339-343 [PMID: 16680631 DOI: 10.1055/s-2005-870412]
- 101 **Miyata T**, Kitano M, Sakamoto H, Imai H, Kamata K, Kadosaka K, Omoto S, Kudo M. Role of Contrast-Enhanced Harmonic EUS in Differentiating Malignant From Benign Lymphadenopathy. *Gastrointestinal Endoscopy* 2013; **77** (5 - Supplement): AB142
- 102 **Giovannini M**. Contrast-enhanced endoscopic ultrasound and elastosonoendoscopy. *Best Pract Res Clin Gastroenterol* 2009; **23**: 767-779 [PMID: 19744639 DOI: 10.1016/j.bpg.2009.05.004]

P- Reviewer: Gurkan A, Mentés O, M'Koma AE, Sieg A
S- Editor: Song XX **L- Editor:** A **E- Editor:** Wu HL





Published by **Baishideng Publishing Group Inc**

8226 Regency Drive, Pleasanton, CA 94588, USA

Telephone: +1-925-223-8242

Fax: +1-925-223-8243

E-mail: bpgoffice@wjgnet.com

Help Desk: <http://www.wjgnet.com/esps/helpdesk.aspx>

<http://www.wjgnet.com>

