

RESEARCH ARTICLE

Open Access



Distance to parks and non-residential destinations influences physical activity of older people, but crime doesn't: a cross-sectional study in a southern European city

Ana Isabel Ribeiro^{1,2,3,4*}, Andrea Pires^{2,5}, Marilia Sá Carvalho⁶ and Maria Fátima Pina^{3,4,7,8}

Abstract

Background: Physical activity (PA) has numerous health benefits, but older adults live mostly sedentary lifestyles. The physical and social neighborhood environment may encourage/dissuade PA. In particular, neighborhood crime may lead to feeling unsafe and affect older adults' willingness to be physically active. Yet, research on this topic is still inconclusive. Older population, probably the age group most influenced by the neighborhood environment, has been understudied, especially in Southern Europe. In this study, we aimed to analyze the association between leisure-time physical activity (LTPA) in older adults and objective crime, alongside other neighborhood characteristics.

Methods: We obtained data from a population-based cohort from Porto (2005–2008) to assess LTPA. Only adults aged 65 years or more were included ($n = 532$). A Geographic Information System was used to measure neighborhood characteristics. Neighborhood crime was expressed as crime rates by category (incivilities, criminal offenses with and without violence and traffic crime). Neighborhood characteristics such as socioeconomic deprivation, land gradient, street density, transportation network, distance to parks, non-residential destinations and sport spaces were also included. Generalized Additive Models were fitted to estimate the association between neighborhood characteristics and the participation (being active vs. inactive) and frequency (min/day) of LTPA.

Results: Forty-six percent of the men and 61 % of the women did not engage in any kind of LTPA. Among the active participants, men spent on average 50.5 (35.2 Standard Deviation, SD) min/day in LTPA, whereas the average among women was 36.9 (35.1 SD) min/day ($p < 0.001$). Neighborhood crime was unrelated to the participation in, or frequency of, LTPA. On the other hand, two neighborhood characteristics – distance to the nearest park ($\beta = -0.0262$, $p = 0.029$) and to the nearest non-residential destination ($\beta = -0.0735$, $p = 0.019$) – were associated with time spent on LTPA, but only among active older women. No neighborhood characteristic was related to participation in LTPA.

Conclusions: From a public health point of view, the provision of parks and non-residential destinations (shops, schools, cultural and worship places) might contribute to elevate PA levels of already active older women. On the other hand, in this setting, crime was not a big issue.

Keywords: Physical activity, Safety, Older adults, Parks, Destinations

* Correspondence: ana.isabel.ribeiro@ineb.up.pt

¹Departamento de Epidemiologia Clínica, Medicina Preditiva e Saúde Pública, Faculdade de Medicina, Universidade do Porto, Rua do Campo Alegre, 823, 4150-180 Porto, Portugal

²ISPUP – Instituto de Saúde Pública da Universidade do Porto, Rua das Taipas, 135, 4050-600 Porto, Portugal

Full list of author information is available at the end of the article

Background

Physical activity (PA) has numerous health benefits [1], but most people, and especially older adults, lead sedentary lifestyles [2]. Due to the increasing share of older populations in our societies [3], understanding the correlates of PA in this demographic group has never been so important. Physical activity habits are influenced by a myriad of aspects, including the social and physical environment [4]. The last two decades have been fertile in studies trying to determine the association between physical and social characteristics of the neighborhood and PA among older adults. But research on this topic is still not conclusive [5-7]. Literature shows mixed associations between different aspects of the neighborhood environment (access to parks/sport spaces or destinations, deprivation, land-uses, aesthetics) and PA [5-7].

Crime is one neighborhood characteristic that can act as a barrier to physical activity [8]. It is likely that people living in neighborhoods with high crime rates feel unsafe and, consequently, they might avoid engaging in PA in the neighborhood. Despite being a scientifically sound theory, neighborhood crime is one of the environmental correlates of PA that has led to more inconsistent and counterintuitive findings [9]. Perceived (self-reported) and objective (police recorded) measures of crime have been used in studies about this issue. The two provide distinct and complementary information [10], while objective crime expresses the likelihood of a crime occurring, perceived crime captures the individual interpretation of this tangible reality. Ideally, both perceived and objective crime should be addressed. Yet, studies using objective measures are particularly helpful because they are based on concrete indicators, making it easier to translate research findings into interventions that promote active lifestyles [11].

Older people have been subject to a limited number of studies relating crime and PA. In 2008, Foster and Giles-Corti reviewed all evidence about the topic and found that only 6 out of 41 studies have focused on samples of older adults [9]. Older adults are particularly vulnerable to the effects of neighborhood environments [12] and, principally older women, are more fearful of crime than any other demographic group [9,13-15]. Moreover, these studies have mostly used perceived measures of neighborhood crime [16-20] and as for adult samples, the results are not consistent – some detect significant associations [18-21] but others do not [16,17]. Further studies have since been published but the evidence remains limited: mixed results (6 studies detected some kind of association [10,22-26], but in 3 no association at all [27-30]); objective measures of crime were lacking [10,22,23,27]; and not all have dissected the effects of different categories of crime [10,23] (which might obscure the specific effect of some crime types).

Regardless of the neighborhood characteristics under analysis, Southern Europe has been neglected. Populations in Southern European countries rank among the oldest and most inactive in Europe [31,32]. Portugal, specifically, has one of the highest proportion of respondents saying they never exercise or play sport – 64 % of the adults (≥ 18 years) [31]. Populations residing in these areas therefore need further attention.

To address these gaps, we aimed to study the association between leisure-time physical activity (LTPA) among older adults and objective crime, without disregarding other neighborhood characteristics. Data will be drawn from a population-based cohort of adults residing in Porto (Portugal), and a wide range of objectively measured neighborhood characteristics will be used.

Methods

Setting

Located in the northwest of Continental Portugal, Porto municipality had approximately 240,000 inhabitants in 2008 [33], distributed across 41.7 km². Porto is limited by the Atlantic coast, and extends along the Douro River estuary. It is an industrial and port town situated in the Porto Metropolitan Area, the second largest metro area of Portugal with roughly 1.3 million inhabitants [34].

Participants

The EPIPorto Cohort encompasses a representative sample of 2485 adult (≥ 18 years old) inhabitants of Porto. Baseline evaluation was conducted from 1999–2003 [35]. Participants were recruited by random digit dialing using households as the sampling unit. After assessing the number and age of the residents of each household, randomization was applied to select one eligible person among the permanent adult residents.

The follow-up evaluation took place from 2005–2008. 1943 participants were contacted but 261 participants refused to participate, resulting in a response rate of 86.6 %.

The Ethics Committee of the Hospital de São João approved the study protocol. The study was carried out according to the Helsinki Declaration and all participants completed the informed written consent form.

Google Earth™ was used to georeference all addresses. For the present study, we included only adults aged 65 or more at the follow-up evaluation, i.e., 582 out of 1682 participants. Five participants were excluded because they moved outside of Porto.

Outcome: Leisure-time physical activity

Physical activity was evaluated using the EPIPorto Physical Activity Questionnaire to measure time and intensity of different types of activities, such as rest, transport to/from work, occupational, household and leisure [36]. A previous

study assessed the validity, reproducibility and seasonal bias associated with past-year PA reporting, and it showed it is a valid and reproducible instrument for the brief assessment of different types of PA among adults.

In our study we focused on leisure time physical activities. In the EPIPorto Physical Activity Questionnaire, these included sedentary (playing cards, watching TV), light (e.g. brisk walking, golfing, snooker), moderate (e.g. walk at moderate pace, dancing, stretching) and vigorous (e.g. running, soccer, basketball) leisure activities. Because older adults benefit from PA even if light [37], we considered LTPA as the sum of the time (minutes/day) spent in non-sedentary leisure activities.

Two measures of LTPA were defined: time spent (minutes/day) in LTPA and participation in LTPA – inactive (0 min/day) and active (>0 min/day). We followed this approach because we theorized that the time active individuals spend in LTPA might be more influenced by neighborhood characteristics, whereas participation in LTPA might be more related to individual characteristics than to the neighborhood's [38].

Information about LTPA was available for 533 participants (out of 577), but one outlier observation had to be excluded, making a final sample of 532 participants.

Covariates: Individual variables

Individual characteristics were obtained through a structured questionnaire. We considered as confounders the following individual correlates of LTPA: age; marital status (married/non-marital union, single, widowed and separated/divorced); educational attainment (number of schooling years); retirement status (not retired/retired); smoking status (smoker, occasional smoker, non-smoker and ex-smoker); comorbidities (absence/presence of at least one of the following conditions – cardiovascular, respiratory, osteoarticular and musculoskeletal disorders, cancer, depression, cirrhosis and hypo/hyperthyroidism); residence in Porto for 20 years or more (yes/no); and body mass index (classified according to World Health Organization cut-offs).

Covariates: environmental variables

Neighborhood characteristics included as independent variables in the statistical analysis were: 1) socioeconomic status (SES) of the census tract of residence (three classes from the most to the least deprived [39]); 2) population density of the census tract of residence; 3) distance from the residence to the nearest park (24 parks); 4) distance to the nearest sport space (71 sport spaces); 5) distance to the nearest non-residential destination (includes churches, shops, libraries, museums and other points of interest) (421 non-residential destinations); 6) distance to the sea/riverside; 7) density of street intersections within 200 m of the residence (considered as

the walkable distance for older individuals); 8) density of bus/metropolitan stops within 200 m; 9) average land gradient within 200 m. Since individual data refer to follow-up evaluation (2005–2008), all neighborhood characteristics were collected for a year within this time-window. The collection of the above mentioned variables and the georeferencing procedures were previously described [38].

The map of the participants' residence and neighborhood characteristics is displayed in Fig. 1.

Covariates: crime

Data about crime were obtained from the Public Security Police of the Metropolitan Command of Porto, which provided records of all crimes in Porto during 2008. The dataset included a description of the crime and the place of occurrence (street, neighborhood, street segment and, occasionally, exact position).

There were 17,790 records, from which 296 could not be georeferenced due to poor quality location information and 1776 were excluded because they corresponded to crimes (e.g. fraud, jobbery, copyright crimes) that were unlikely have an impact on the population's fear of crime and, consequently, PA.

Based on previous studies [10,23], we classified the remaining 15,718 crimes into the following categories: 1) incivilities (drug, vandalism, prostitution); 2) criminal offenses with violence, i.e., with approach to the victim (robbery, homicide, rape); 3) criminal offenses without violence, i.e., with no approach to the victim (theft, verbal offences) and 4) traffic (drunk/dangerous driving, speeding).

Further details about the georeferencing procedures and categorization of crime records can be found as additional material (additional file 1 and 2).

We calculated crime rates (/1000 inhabitants), by category, for each census tract; then a crime rate was attributed to each participant. Fig. 2 shows the spatial distribution of crimes rates across Porto municipality by category.

Statistical analysis

Descriptive statistics were computed for all variables, by sex and participation in LTPA (active vs. inactive). Mann–Whitney U and Chi-square tests were employed to compare distributions and proportions; the significance level was set at 0.05.

Generalized Additive Models (GAM) were used to estimate the association between LTPA and covariates. GAM extends generalized linear models to include non-parametric smoothing. This approach allowed us to model the spatial distribution of LTPA, and therefore to control for the presence of possible spatial autocorrelation.

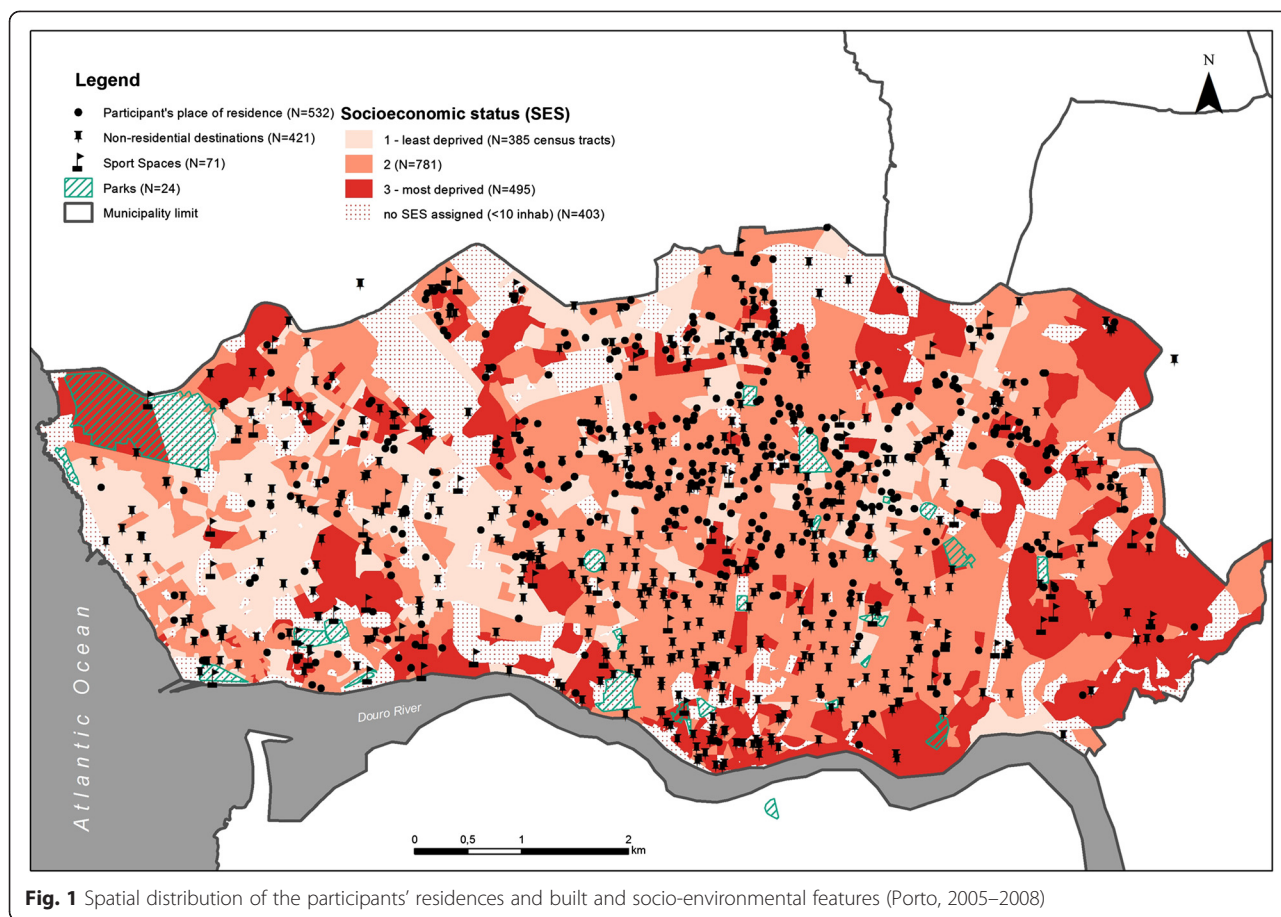


Fig. 1 Spatial distribution of the participants' residences and built and socio-environmental features (Porto, 2005–2008)

For data modeling, LTPA was used as a dependent variable and individual and neighborhood characteristics as covariates. Firstly, the association between spatial location of residence and LTPA was evaluated by applying a bivariate smoothing spline function on the pair of coordinates. Secondly, univariable analysis was conducted and all covariates with p -values ≤ 0.10 were included in the initial multivariable model. Then, each covariate was removed step by step until the final adjusted model was attained, eliminating consecutively those with the highest p -values. The final model included only covariates with p -values ≤ 0.05 .

The presence of interactions was evaluated by including interaction terms between: 1) sex/marital status and area variables and 2) crime and other environmental variables.

Two models were fitted to test the hypotheses that 1) neighborhood characteristics were related to participation in LTPA and 2) neighborhood characteristics affect the time spent on LTPA among already-active persons. The first model, logistic regression, (eq 1) included the whole sample and assessed LTPA as a dichotomous variable (active/inactive). The second, linear regression, (eq 2) contained only active individuals, and assessed LTPA as a continuous variable (minutes/day). Given its

skewed distribution, the variable LTPA (minutes/day) was log-transformed. The equations are presented below:

$$\text{logit}(y_i) = \beta_0 + \sum \beta_k x_{ik} + f(\text{north}_i, \text{east}_i) + e_i \quad (1)$$

$$z_i = \beta_0 + \sum \beta_k x_{ik} + f(\text{north}_i, \text{east}_i) + e_i \quad (2)$$

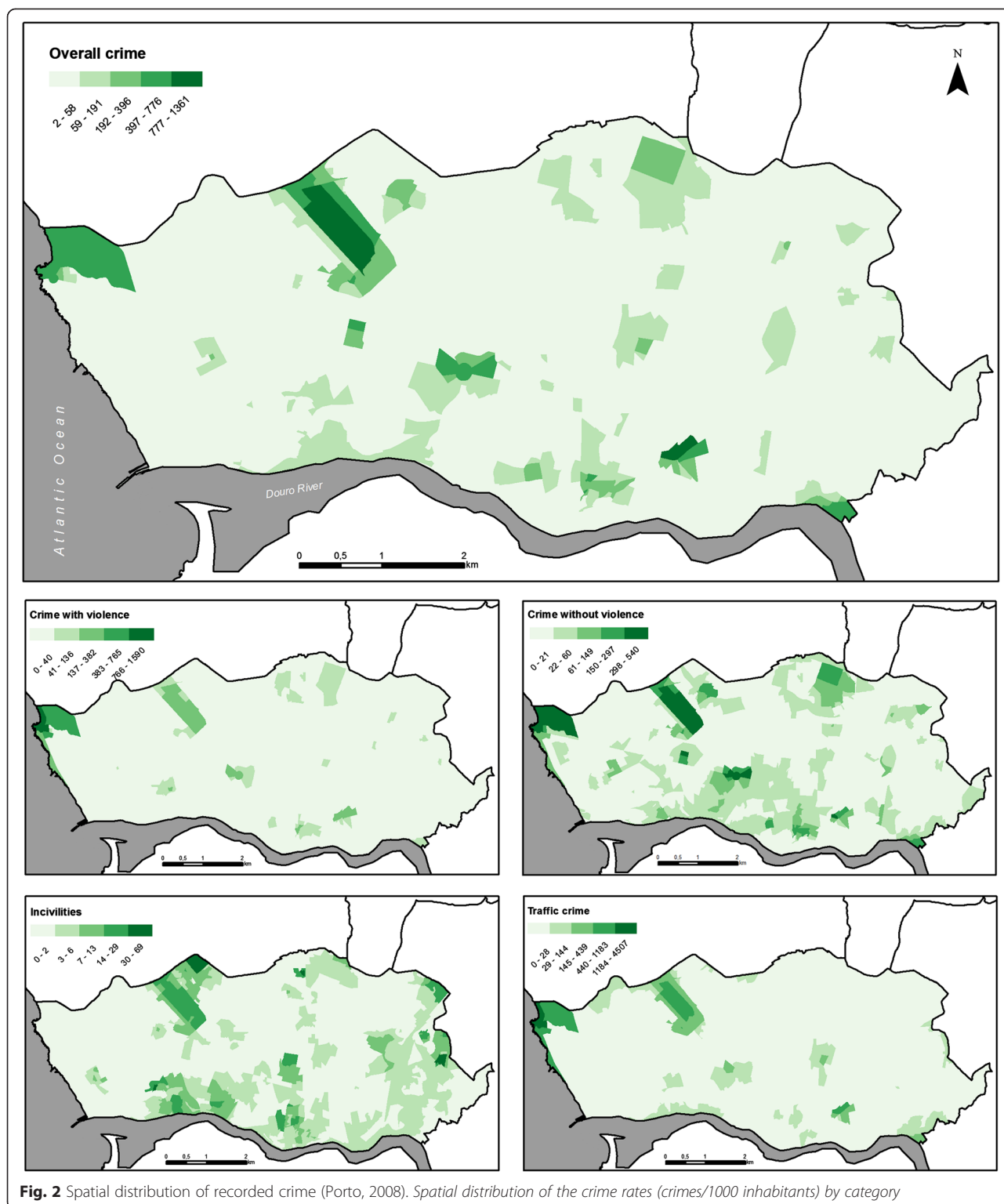
where y_i and z_i are the response variables, β 's are the coefficients of the model, x_{ik} are the explanatory variables, $f(\text{north}_i, \text{east}_i)$ is a smooth function of the coordinates and e_i are the residuals.

Due to the presence of interactions between sex and some neighborhood characteristics, sex-stratified models were built.

Results

Sample characteristics

The characteristics of the participants are shown in Tables 1 and 2. The sample consisted of 39 % men, and the mean age was 72.7 (5.6 SD, standard deviation) and 73.7 (5.9 SD) years old, among men and women, respectively.



Forty-six percent of the men and 61 % of the women do not engage any kind of LTPA. Among the active participants, men spend on average 50.5 (35.2 SD) min/day in LTPA, whereas women’s average is 36.9 (35.1 SD) min/day ($p < 0.001$).

Men and women differ significantly in several aspects. Compared with women, among men we observed higher educational attainment, a lower proportion of chronically ill, obese and widowed, and a higher proportion of smokers.

Table 1 Characteristics of the participants (Porto, 2005–2008) according to participation in LTPA (inactive or active)

	Total (n = 532)		Inactive (n = 294)		Active (n = 238)	
	Women (n = 323)	Men (n = 209)	Women (n = 198)	Men (n = 96)	Women (n = 125)	Men (n = 113)
	Mean (SD) ^a or No. (%)	Mean (SD) or No. (%)	Mean (SD) or No. (%)	Mean (SD) or No. (%)	Mean (SD) or No. (%)	Mean (SD) or No. (%)
Age (yrs)	72.7 (5.6)	73.7 (5.8)	73.3 (6.0)	74.0 (5.7)	71.8 (4.7)	73.4 (6.0)
Marital Status*:						
Married/un-married union	142 (44.0)	182 (87.1)	92 (46.5)	82 (85.4)	50 (40.0)	100 (88.5)
Single	24 (7.4)	1 (0.5)	15 (7.6)	1 (1.0)	9 (7.2)	0 (0.0)
Widowed	140 (43.3)	23 (11.0)	82 (41.4)	12 (12.5)	58 (46.4)	11 (9.7)
Divorced/separated	17 (5.3)	3 (1.4)	9 (4.5)	1 (1.0)	8 (6.4)	2 (1.8)
Education attainment (no. years)***	5.5 (4.1)	7.3 (4.4)	4.8 (3.7)	6.6 (4.0)	6.6 (4.4)	7.9 (4.5)
Retirement status*:						
Not retired	62 (19.2)	8 (3.8)	39 (19.7)	4 (4.2)	23 (18.4)	4 (3.5)
Retired	261 (80.8)	201 (96.2)	159 (80.3)	92 (95.8)	102 (81.6)	109 (96.5)
Residence in Porto (<20 years)	7 (2.2)	4 (1.9)	6 (3.0)	2 (2.1)	1 (0.8)	2 (1.8)
Comorbidities*:						
No	73 (22.7)	69 (33.0)	45 (22.8)	36 (37.5)	28 (22.4)	33 (29.2)
Yes	249 (77.3)	140 (67.0)	152 (77.2)	60 (62.5)	97 (77.6)	80 (70.8)
Body Mass Index***:						
Underweight (<18.5)	0 (0.0)	0 (0.0)	0 (0.0)	0 (0.0)	0 (0.0)	0 (0.0)
Normal (18.5-24.9)	69 (21.6)	70 (34.1)	39 (20.0)	23 (25.0)	30 (24.0)	47 (41.6)
Overweight (25.0-29.9)	136 (42.5)	102 (49.8)	77 (39.5)	51 (55.4)	59 (47.2)	51 (45.1)
Obese (≥30.0)	115 (35.9)	33 (16.1)	79 (40.5)	18 (19.6)	36 (28.8)	15 (13.3)
Smoking habits***:						
Smoker	6 (1.9)	19 (9.1)	5 (2.6)	5 (5.2)	1 (0.8)	14 (12.4)
Occasional smoker	1 (0.3)	2 (1.0)	1 (0.5)	1 (1.0)	0 (0.0)	1 (0.9)
Non-smoker	290 (90.3)	72 (34.4)	182 (92.9)	31 (32.3)	108 (86.4)	41 (36.3)
Ex-smoker	24 (7.5)	116 (55.5)	8 (4.1)	59 (61.5)	16 (12.8)	57 (50.4)
LTPA ^b (minutes/day)***	14.3 (28.2)	27.3 (36.1)	0.0 (0.0)	0.0 (0.0)	36.9 (35.1)	50.5 (35.2)

* $p \leq 0.05$ comparing men and women

** $p \leq 0.05$ comparing active and inactive

^aSD standard deviation

^bLTPA leisure-time physical activity

Active participants were more educated and less likely to be obese than inactive individuals.

Regarding the neighborhood characteristics, on average, participants had parks, sport spaces and non-residential destinations within a distance shorter than 1000 m from their residence. The average street intersection density was 12 nodes/ha, and participants had on average 3 bus stops in a radius of 200 m around their residence. Most of the participants (61 %) were classified as medium SES neighborhoods.

The majority of the crimes (57 %) corresponded to criminal offenses without violence (*circa* 22 occurrences/1000 inhabitants) and the reporting of incivilities was rare (*circa* 0.4/1000). After non-violent crime, traffic

crime was the most common crime category (*circa* 7/1000), followed by criminal offenses with violence (*circa* 6/1000).

Active and inactive participants did not differ in most neighborhood characteristics, except in relation to socioeconomic deprivation and land gradient, which seemed lower among active participants. Men and women did not differ in any of the neighborhood characteristics.

Role of neighborhood environment on LTPA

We observed no spatial autocorrelation in the distribution of LTPA (either active/inactive or min/day). Consequently, the spatial smoothing term was excluded from the models.

Table 2 Characteristics of the participants' neighborhood environment (Porto, 2005–2008) according to participation in LTPA (inactive or active)

	Total (n = 532)		Inactive (n = 294)		Active (n = 238)	
	Women (n = 323)	Men (n = 209)	Women (n = 198)	Men (n = 96)	Women (n = 125)	Men (n = 113)
	Mean (SD) ^a or No. (%)	Mean (SD) or No. (%)	Mean (SD) or No. (%)	Mean (SD) or No. (%)	Mean (SD) or No. (%)	Mean (SD) or No. (%)
Distance to the nearest parks (hm)	9.9 (6.4)	10.9 (6.6)	9.7 (6.2)	10.9 (7.1)	10.3 (6.6)	10.8 (6.2)
Distance to the nearest sport space (hm)	10.0 (4.7)	6.6 (3.5)	9.7 (4.7)	6.6 (3.4)	10.4 (4.7)	6.7 (3.5)
Distance to the nearest non-residential destination (hm)	3.3 (2.2)	3.5 (2.3)	3.3 (2.1)	3.4 (2.3)	3.3 (2.5)	3.5 (2.3)
Distance to the sea/riverside (hm)	33.9 (11.0)	32.6 (11.5)	34.7 (11.4)	33.0 (11.4)	32.7 (10.5)	32.3 (11.7)
Intersection density ^b (nodes/ha)	12.3 (6.7)	12.5 (6.8)	12.7 (6.9)	12.2 (6.4)	11.6 (6.3)	12.7 (7.2)
Bus/metropolitan stops (no.) ^b	3.4 (1.9)	3.2 (1.9)	3.5 (1.9)	3.3 (2.1)	3.2 (1.8)	3.2 (1.7)
Land gradient (%) ^b #	5.0 (3.6)	4.8 (3.2)	5.1 (3.5)	4.9 (3.1)	4.7 (3.7)	4.8 (3.3)
Population density (inhab./km ²) ^b	13549.1 (9208.9)	13270.3 (9071.5)	13795.7 (9869.8)	13976.6 (10415.9)	13158.6 (8075.0)	12670.3 (7746.7)
Neighborhood SES ^c :						
1 – least deprived	66 (20.4)	48 (23.0)	37 (18.7)	16 (16.7)	29 (23.2)	32 (28.3)
2 – medium deprived	202 (62.5)	123 (58.9)	122 (61.6)	58 (60.4)	80 (64.0)	65 (57.5)
3 – most deprived	55 (17.0)	38 (18.2)	39 (19.7)	22 (22.9)	16 (12.8)	16 (14.2)
Neighborhood crime (crimes/1000 inhab.):						
Incivilities	0.4 (0.8)	0.4 (0.5)	0.5 (1.0)	0.4 (0.4)	0.4 (0.5)	0.4b(0.6)
Crime without violence	22.4 (20.4)	20.9 (21.2)	20.3 (16.6)	21.8 (23.3)	25.7 (25.0)	20.1 (19.4)
Crime with violence	5.9 (7.5)	6.0 (8.3)	6.7 (8.6)	6.1 (10.0)	4.7 (5.1)	5.8 (6.5)
Traffic crime	7.5 (17.2)	7.1 (13.2)	7.7 (19.1)	6.2 (10.7)	7.3 (13.7)	7.8 (14.9)
Overall crime	26.9 (34.0)	25.9 (26.7)	29.6 (40.3)	24.7 (26.6)	22.7 (19.7)	26.9 (26.9)

* $p \leq 0.05$ comparing active and inactive^aSD standard deviation^bWithin 200 m circular buffer^cSES neighborhood socioeconomic status

When considering the whole sample and the response variable as participation in LTPA (active vs. inactive), logistic regression models revealed no association between crime (and any other neighborhood characteristics) and participation in LTPA among men. We only found a significant association between participation in LTPA and the rates of non-violent crime (Odds Ratio, OR = 1.019; IC95% = 1.004–1.027, $p = 0.014$) among women.

Concerning the outcome as time spent in LTPA by active individuals, the results (Table 3) show the adjusted and unadjusted coefficients for the association between neighborhood characteristics and time spent by active individuals in LTPA. There was no significant association between crime and time spent in LTPA, regardless of the category. We also tested for interactions and found no significant association.

However, significant associations with other neighborhood characteristics were observed. In the univariable analysis, among women, distances to the nearest park and to non-residential destination were negatively associated with the time spent in LTPA. After adjustment,

associations between the distance to the nearest park ($\beta = -0.0262$, $p = 0.029$) and non-residential destination ($\beta = -0.0735$, $p = 0.019$) remained. That is, for every 100 m increase in the distance to the nearest park and non-residential destination, the time spent in LTPA reduces $((1 - e^{\beta}) \times 100)$ by 2.6 % and 7.1 %, respectively.

In men, we observed a positive association between distance to nearest sport space and LTPA ($\beta = 0.0462$, $p = 0.032$).

The proportion of the explained variability in LTPA (minutes/day) of the linear models was 17.1 % for women and 10.9 % for men; higher than in the logistic model (active/inactive), where it did not surpass 10 % for women and 7 % for men.

Discussion

Our study represents one of the most comprehensive studies of neighborhood influences on physical activity among older adults from southern Europe, and the first addressing the impact of neighborhood crime. We found neighborhood crime was unrelated to the practice or the

Table 3 Association between time spent in leisure-time physical activity of active participants and neighborhood characteristics. Association between daily minutes spent in leisure-time physical activity (log-transformed) of active participants and neighborhood characteristics, stratified by sex (Porto, 2005–2008)

	Model 1 ^a				Model 2 ^b			
	Women		Men		Women		Men	
	Coefficient	<i>p</i> -value	Coefficient	<i>p</i> -value	Coefficient	<i>p</i> -value	Coefficient	<i>p</i> -value
Distance to the nearest park (hm)	-0.0275	0.017	-0.0063	0.573	-0.0262	0.029		
Distance to the nearest sport space (hm)	-0.0297	0.068	0.0471	0.017			0.0462	0.032
Distance to the nearest non-residential destination (hm)	-0.0750	0.014	0.0125	0.680	-0.0735	0.019		
Distance to the sea/riverside (hm)	-0.0031	0.669	-0.0011	0.852				
Intersection density ^c (nodes/ha)	-0.0073	0.549	-0.0070	0.471				
Bus/metropolitan stops (no.) ^c	0.0093	0.828	0.0089	0.823				
Land gradient (%) ^c	-0.0254	0.221	-0.0102	0.628				
Population density (inhab./ha) ^c	0.0006	0.495	-0.0005	0.596				
Neighborhood SES ^d								
1 – least deprived	Ref		Ref					
2 – medium deprived	-0.0394	0.832	0.0242	0.879				
3 – most deprived	-0.1358	0.612	0.1921	0.393				
Neighborhood crime (crimes/1000 inhab.)								
Incivilities	-0.0008	0.996	-0.0008	0.995				
Crime without violence	-0.0015	0.615	0.0029	0.423				
Crime with violence	-0.0081	0.593	0.0012	0.991				
Traffic crime	0.0045	0.422	0.0020	0.669				
Overall crime	-0.0156	0.689	0.00038	0.883				

^aUnivariable regression

^bMultivariable regression adjusted for age, educational attainment, marital status, retirement status, residence in Porto for 20 years or more, comorbidities, BMI and smoking habits

^cWithin 200 m circular buffer

^dSES neighborhood socioeconomic status

frequency of LTPA. On the other hand, we observed that other neighborhood characteristics – distance to the nearest park and to the nearest non-residential destination – were associated with the time spent on LTPA, but only among older women that were active in some way. These characteristics were also unrelated to whether they were physically active or not.

Regarding the role of our primary neighborhood variable, objective crime, results did not corroborate our hypothesis. No main or interaction effects between neighborhood crime (and its categories) and PA were found. We only found a positive association between participation in LTPA and non-violent crimes among women.

Several studies have reported that crime, dissuades seniors from being active [10,18-23,25,26,40]. The fewer studies using objective measures of crime [10,21-23] actually provide evidence for such an association, whereas within the group of studies based on measures of perceived crime [16-20,25-30,40], null associations were frequent [16,17,27-30]. The fact we could not identify significant associations between PA and neighborhood

crime might result from three possible explanations: (i) low risk of crime; (ii) walkable neighborhoods are attractive to crime; and (iii) social/cultural factors alleviate feeling unsafe.

Porto, like most Portuguese cities, is a relatively safe urban area and the few existing threats might not suffice to dissuade older adults from engaging PA. Portugal is at the bottom half in the rank of the European Crime Statistics, having lower crime rates than the UK, France or Spain [41]. The studies we found about the role of objective crime on older adults PA were undertaken in different countries and/or cities (USA, Oslo and Amsterdam), where crime might be a bigger issue.

Another plausible explanation lies with the fact that the same areas which provide destinations to walk do also provide opportunities for crime. The resources that define a walkable neighborhood – presence of shops, recreational facilities, dense transportation network, street connectivity, and food and alcohol outlets – have been associated with higher levels of crime [42-45]. Therefore, the negative influence that crime exerts on PA might be silenced by the positive impact of living in

a walkable neighborhood. A recent study demonstrated that this seems to be a very plausible explanation of the null or counterintuitive findings found in studies about the effects of neighborhood crime on PA [46]. Notice that we found a positive association between neighborhood crime and PA in women, which happens to be the same demographic group whose PA levels increased with the proximity to non-residential destinations (shopping centers, recreational places). In our study we sought evidence for interactions between crime and other characteristics but we were not able to detect any, not even between neighborhood crime and distance to non-residential destinations.

Finally, another possible reason of the null associations might derive from the specificity of the Portuguese social context. Social interactions and strong family ties in Portugal, and other Southern European countries, tend to be more common than in northern countries (where most studies have been performed) [47-49]. Studies have shown that perceived safety and self-efficacy might be determined by social support within the family and community [50,51].

In our study we also found no evidence that neighborhood characteristics significantly influence whether older adults are physically active or not. That represents no novelty for us. In a previous study, using baseline data (1999–2003) from the same population-based cohort, we found that neighborhood characteristics did not define whether older adults were active (some PA) or inactive (no PA at all). As in the present study, access to parks and non-residential destinations was only relevant among the elderly who already participate in PA [38]. Very few studies have looked at LTPA this way (both as dichotomous and continuous variables) but two processes are involved here and should be analyzed separately: participation in any LTPA at all and the amount of time dedicated to LTPA. Physical activity (and other health-related behaviors) is chiefly shaped at early life-stages and depends upon personal characteristics (e.g., sociocultural and educational aspects, or even physician recommendation) [52,53]. Thus, it would be unlikely that neighborhood environments effect an older person who has never exercised in his/her entire life. On the contrary, for those that already exercise on a daily basis, having an extra exercise facility in their neighborhood might increase their levels.

On the other hand, the associations we found between LTPA and proximity to parks and non-residential destinations corroborate the literature on the topic. The role of parks in PA has been extensively studied and it seems that access to parks may encourage people to engage in PA by, for example, providing increased opportunities for walking and cycling [20,54-56]. Similarly, access to non-residential destinations (sometimes expressed as land-use mix) has been

consistently associated with increased PA among the elderly [25,28,56-59].

In our study, these associations were exclusive to women. The explanatory capability of our models, although modest, was higher in women (17 %) than in men (11 %), implying neighborhood characteristics have lesser impact on men's choices and attitudes toward PA. Accumulated knowledge on this topic suggests that residential environments might be more important for women's health and health-related behaviors than for men's [60].

In men, we found a positive association between distance to the nearest sport space and time spent in LTPA – those living farther away spending more time. A possible explanation for that unexpected finding would be the presence of unaccounted characteristics near sport spaces that dissuade PA (such as noise, pollution, social capital). As previously stated, we believe that among men, individual motivation and social support (e.g. having friends around to play with) might be much more relevant in shaping their PA habits than neighborhood characteristics.

Limitations

Our study has some limitations to consider. First, the cross-sectional nature of the study does not allow us to prove causal associations, due to the possibility of reverse causation and unmeasured confounding. Secondly, although we included a wide range of neighborhood characteristics, we could not incorporate characteristics known to affect PA, such as traffic [58], aesthetics [61] and social support [25,61]. Due to data unavailability, the role of perceived neighborhood environment, namely perceived crime, could not be explored. Third, we relied on self-reported PA, which might lead to recall and reporting bias. However, the EPIPorto PA Questionnaire was based on a well-established questionnaire and the validation procedure showed that it is a valid and reproducible instrument for assessing PA among adults [36]. Fourth, our measure of neighborhood crime might present some limitations as well. Objective crime refers to a single year (2008) and, although the overall crime rates did not change significantly in the proximate years, we cannot exclude the hypothesis that small space-time fluctuations occurred. In that circumstance, the use of crime records from other years/periods could have produced different results. Moreover, we cannot rule out the possibility that the crime records' accuracy varied by neighborhood, which could lead to individuals' differential misclassification.

Strengths

Our study has several strengths too. It represents one of the most comprehensive studies of the neighborhood influences on physical activity among older adults from southern Europe, and the first addressing the impact of

neighborhood crime. The effects of neighborhood environments on PA might be context- and culture-specific. Consistency is one of the key criteria for causation: consistent findings observed by different persons in different places with different samples strengthens the likelihood of an effect [62]. Moreover, as previously referred to, the lowest levels of physical activity are clustered in Southern Europe and current economic constraints can only contribute to exacerbate this position [31]. Studies like ours might lead to interventions in urban design, which will improve population PA levels without being too costly - an important aspect when economic resources are limited. Secondly, we used a vast range of objectively measured neighborhood characteristics, minimizing bias due to unaccounted confounding variables. Third, crime was divided into different categories allowing us to determine the impact of each. Finally, our study contributes to consolidate the knowledge on an important, and still unsolved, public health issue - what are the urban environment correlates of PA? We believe the answer to that real-world question will lead to significant changes in urban planning policies.

Conclusions

We found no association between objective crime and the participation, and frequency of, LTPA among older adults. On the other hand, two neighborhood characteristics - distance to non-residential destinations and parks - were related to the time spent in LTPA, but only among older women that were active in some way. We also found no evidence that neighborhood characteristics define physical activity habits - being active (some PA) or inactive.

From a public health point of view, the provision of non-residential destinations such as shops, cultural and worship places, schools and parks might contribute to elevate PA levels of already active seniors. Yet, a profound change of PA habits might require multifaceted strategies that include environmental modifications, but also individual guidance provided by physicians, educators and mass media.

Additional files

Additional file 1: Georeferencing of crime records.

Additional file 2: Categorization of crime records.

Competing interests

The authors declare that they have no competing interests.

Authors' contributions

AIR designed the study, performed the statistical analysis and drafted the manuscript. AP participated in data collection and helped to perform the statistical analysis. MSC contributed to the interpretation of results and helped to draft the manuscript. MFP designed the study, contributed to the interpretation of results and helped to draft the manuscript. All authors read and approved the final manuscript.

Acknowledgements

This work was financed by Portuguese funds through FCT - Fundação para a Ciência e a Tecnologia in the framework of project UID/BIM/04293/2013. AIR and MFP would also like to thank to FCT - Fundação para a Ciência e a Tecnologia for the grants PTDC/SAU-EPI/113424/2009 and SFRH/BD/82529/2011. MSC was supported by CNPQ (309692/2013-0) and FAPERJ (E-26/103.204/2011). We are also grateful to all participants and EPIPorto research team, coordinated by Professor Henrique Barros, without whom this work would not have been possible. The EPIPorto study was funded by Fundação para a Ciência e a Tecnologia (Foundation for Science and Technology)(PraxisXXI/2/2.1/SAU/1332/95, POCTI/ESP/35769/99). The authors also acknowledge PSP for providing information on recorded crime; STCP (Sociedade de Transportes Coletivos do Porto, S.A.) for providing information on public transports; Roseanne Autran for kindly providing her list of the sport facilities of the city; Claire Niedzwiedz for her work as language editor, who made significant revisions of the manuscript; Billie Giles-Corti and the reviewers Andrew Kaczynski and Calum Mattocks, whose numerous comments and suggestions greatly helped us to improve the article.

Author details

¹Departamento de Epidemiologia Clínica, Medicina Preditiva e Saúde Pública, Faculdade de Medicina, Universidade do Porto, Rua do Campo Alegre, 823, 4150-180 Porto, Portugal. ²ISPUP - Instituto de Saúde Pública da Universidade do Porto, Rua das Taipas, 135, 4050-600 Porto, Portugal. ³i3S - Instituto de Investigação e Inovação em Saúde, Universidade do Porto, Porto, Portugal. ⁴INEB - Instituto de Engenharia Biomédica, Universidade do Porto, Rua do Campo Alegre, 823, 4150-180 Porto, Portugal. ⁵UFAL - Universidade Federal de Alagoas, Alagoas, Brazil. ⁶PROCC - Programa de Computação Científica, Fundação Oswaldo Cruz, Av. Brasil, 4365 - Antiga Residência Oficial, Manguinhos, 21045-900 Rio de Janeiro, RJ, Brasil. ⁷ICICT/FIOCRUZ - Instituto de Comunicação e Informação Científica e Tecnológica em Saúde/Fundação Oswaldo Cruz, Rio de Janeiro, Brazil. ⁸CARTO-FEN/UERJ - Departamento de Engenharia Cartográfica, Faculdade de Engenharia da Universidade do Estado do Rio de Janeiro, Rio de Janeiro, Brazil.

Received: 13 May 2015 Accepted: 27 May 2015

Published online: 27 June 2015

References

1. Wen CP, Wai JP, Tsai MK, Yang YC, Cheng TY, Lee MC, et al. Minimum amount of physical activity for reduced mortality and extended life expectancy: a prospective cohort study. *Lancet*. 2011;378(9798):1244-53.
2. Sun F, Norman IJ, While AE. Physical activity in older people: a systematic review. *BMC Public Health*. 2013;13:449.
3. Christensen K, Doblhammer G, Rau R, Vaupel JW. Ageing populations: the challenges ahead. *Lancet*. 2009;374(9696):1196-208.
4. Giles-Corti B, Donovan RJ. The relative influence of individual, social and physical environment determinants of physical activity. *Soc Sci Med* (1982). 2002;54(12):1793-812.
5. Cunningham GO, Michael YL. Concepts guiding the study of the impact of the built environment on physical activity for older adults: a review of the literature. *Am J Health Promot*. 2004;18(6):435-43.
6. Koenen MA, Verheijden MW, Chinapaw MJ, Hopman-Rock M. Determinants of physical activity and exercise in healthy older adults: a systematic review. *Int J Behav Nutr Phys Act*. 2011;8:142.
7. McCormack GR, Shiell A. In search of causality: a systematic review of the relationship between the built environment and physical activity among adults. *Int J Behav Nutr Phys Act*. 2011;8:125.
8. Lorenc T, Clayton S, Neary D, Whitehead M, Petticrew M, Thomson H, et al. Crime, fear of crime, environment, and mental health and wellbeing: mapping review of theories and causal pathways. *Health Place*. 2012;18(4):757-65.
9. Foster S, Giles-Corti B. The built environment, neighborhood crime and constrained physical activity: an exploration of inconsistent findings. *Prev Med*. 2008;47(3):241-51.
10. McGinn AP, Evenson KR, Herring AH, Huston SL, Rodriguez DA. The association of perceived and objectively measured crime with physical activity: a cross-sectional analysis. *J Phys Act Health*. 2008;5(1):117-31.
11. Lin L, Moudon AV. Objective versus subjective measures of the built environment, which are most effective in capturing associations with walking? *Health Place*. 2010;16(2):339-48.

12. Kawachi I, Berkman LF. *Neighborhoods and Health*. New York: Oxford University Press; 2003.
13. Loukaitou-Sideris A, Eck JE. Crime prevention and active living. *Am J Health Promo*. 2007;21(4 Suppl):380–9. iii.
14. Machado C, Manita C. Fear of crime: methodological considerations and results from a biannual survey in the city of Oporto. *Eur J Psychol Applied to Legal Context*. 2009;1(1):69–99.
15. Roman CG, Chalfin A. Fear of walking outdoors: a multilevel ecologic analysis of crime and disorder. *Am J Prev Med*. 2008;34(4):306–12.
16. Booth ML, Owen N, Bauman A, Clavisi O, Leslie E. Social–cognitive and perceived environment influences associated with physical activity in older Australians. *Prev Med*. 2000;31(1):15–22.
17. Lim K, Taylor L. Factors associated with physical activity among older people—a population-based study. *Prev Med*. 2005;40(1):33–40.
18. Mota J, Lacerda A, Santos MP, Ribeiro JC, Carvalho J. Perceived neighborhood environments and physical activity in an elderly sample. *Percept Mot Skills*. 2007;104(2):438–44.
19. Wilcox S, Bopp M, Oberrecht L, Kammermann SK, McElmurray CT. Psychosocial and perceived environmental correlates of physical activity in rural and older african american and white women. *J Gerontol Ser B Psychol Sci Soc Sci*. 2003;58(6):P329–37.
20. Li F, Fisher KJ, Brownson RC, Bosworth M. Multilevel modelling of built environment characteristics related to neighbourhood walking activity in older adults. *J Epidemiol Community Health*. 2005;59(7):558–64.
21. Piro FN, Noss O, Claussen B. Physical activity among elderly people in a city population: the influence of neighbourhood level violence and self perceived safety. *J Epidemiol Community Health*. 2006;60(7):626–32.
22. Kremers SP, de Bruijn GJ, Visscher TL, Deeg DJ, Thomese GC, Visser M, et al. Associations between safety from crime, cycling, and obesity in a Dutch elderly population: results from the Longitudinal Aging Study Amsterdam. *J Environ Public Health*. 2012;2012:127857.
23. Evenson KR, Block R, Diez Roux AV, McGinn AP, Wen F, Rodriguez DA. Associations of adult physical activity with perceived safety and police-recorded crime: the Multi-ethnic Study of Atherosclerosis. *Int J Behav Nutr Phys Act*. 2012;9:146.
24. Cerin E, Lee KY, Barnett A, Sit CH, Cheung MC, Chan WM. Objectively-measured neighborhood environments and leisure-time physical activity in Chinese urban elders. *Prev Med*. 2013;56(1):86–9.
25. Van Cauwenberg J, Clarys P, De Bourdeaudhuij I, Van Holle V, Verte D, De Witte N, et al. Physical environmental factors related to walking and cycling in older adults: the Belgian aging studies. *BMC Public Health*. 2012;12:142.
26. Weber Corseuil M, Hallal PC, Xavier Corseuil H, Jayce Ceola Schneider I, d'Orsi E. Safety from crime and physical activity among older adults: a population-based study in Brazil. *J Environ Public Health*. 2012;2012:641010.
27. Shibata A, Oka K, Sugiyama T, Ding D, Salmon J, Dunstan DW, et al. Perceived neighbourhood environmental attributes and prospective changes in TV viewing time among older Australian adults. *Int J Behav Nutr Phys Act*. 2015;12(1):50.
28. Inoue S, Ohya Y, Odagiri Y, Takamiya T, Kamada M, Okada S, et al. Perceived neighborhood environment and walking for specific purposes among elderly Japanese. *J Epidemiol*. 2011;21(6):481–90.
29. Giehl MW, Schneider IJ, Corseuil HX, Benedetti TR, d'Orsi E. Physical activity and environment perception among older adults: a population study in Florianopolis. *Brazil Rev Saude Publica*. 2012;46(3):516–25.
30. Tucker-Seeley RD, Subramanian SV, Li Y, Sorensen G. Neighborhood safety, socioeconomic status, and physical activity in older adults. *Am J Prev Med*. 2009;37(3):207–13.
31. EU. Special Eurobarometer 412 - Sport and Physical Activity. Belgium: European Commission; 2014.
32. Mackenbach J. Convergence and divergence of life expectancy in Europe: a centennial view. *Eur J Epidemiol*. 2013;28(3):229–40.
33. INE. Resident population (No.) by Place of residence, Sex and Age group; Annual - Statistics Portugal, Annual estimates of resident population. Portugal: Statistics Portugal (INE); 2008.
34. EUROSTAT. Metropolitan regions: Population by sex and age groups [met_pjanaggr3]. 2008. http://appsso.eurostat.ec.europa.eu/nui/show.do?dataset=met_pjanaggr3. Accessed 13–5–2015.
35. Santos AC, Barros H. Prevalence and determinants of obesity in an urban sample of Portuguese adults. *Public Health*. 2003;117(6):430–7.
36. Camões M, Severo M, Santos AC, Barros H, Lopes C. Testing an adaptation of the EPIC physical activity questionnaire in Portuguese adults: a validation study that assesses the seasonal bias of self-report. *Ann Hum Biol*. 2010;37(2):185–97.
37. Hamer M, de Oliveira C, Demakakos P. Non-exercise physical activity and survival: english longitudinal study of ageing. *Am J Prev Med*. 2014;47(4):452–60.
38. Ribeiro AI, Mitchell R, Carvalho MS, de Pina MF. Physical activity-friendly neighbourhood among older adults from a medium size urban setting in Southern Europe. *Prev Med*. 2013;57(5):664–70.
39. Alves L, Silva S, Severo M, Costa D, Pina MF, Barros H, et al. Association between neighborhood deprivation and fruits and vegetables consumption and leisure-time physical activity: a cross-sectional multilevel analysis. *BMC Public Health*. 2013;13:1103.
40. Cerin E, Sit C, Barnett A, Cheung M, Chan W. Walking for recreation and perceptions of the neighborhood environment in older chinese urban dwellers. *J Urban Health*. 2012;90(1):56–66.
41. Crime and criminal justice. Crimes recorded by the police by year and country, Eurostat. 2014.
42. Bowes DR. A Two-stage model of the simultaneous relationship between retail development and crime. *Econ Dev Q*. 2007;21(1):79–90.
43. Brantingham PL, Brantingham PJ. Nodes, paths and edges: considerations on the complexity of crime and the physical environment. *J Environ Psychol*. 1993;13(1):3–28.
44. McCord ES, Ratcliffe JH, Garcia RM, Taylor RB. Nonresidential crime attractors and generators elevate perceived neighborhood crime and incivilities. *J Res Crime Delinq*. 2007;44(3):295–320.
45. Beavon DJK BP, Brantingham PJ. Influence of street networks on the patterning of property offenses. In: RV C, editor. *Crime Prevention*. New York: Criminal Justice Press; 1994.
46. Foster S, Knuijan M, Villanueva K, Wood L, Christian H, Giles-Corti B. Does walkable neighbourhood design influence the association between objective crime and walking? *Int J Behav Nutr Phys Act*. 2014;11(1):100.
47. Ellwardt L, Peter S, Präg P, Steverink N. Social Contacts of Older People in 27 European Countries: The Role of Welfare Spending and Economic Inequality. *European Sociological Review*. 2014.
48. Kohli M, Hank K, Künemund H. The social connectedness of older Europeans: patterns, dynamics and contexts. *J Eur Social Policy*. 2009;19(4):327–40.
49. Litwin H. *Social Networks and Well-being: A Comparison of Older People in Mediterranean and Non-Mediterranean Countries*. Psychological Sciences and Social Sciences: The Journals of Gerontology Series B; 2009.
50. Kaniasty K, Norris F. Social support and victims of crime: matching event, support, and outcome. *Am J Community Psychol*. 1992;20(2):211–41.
51. Ross C, Jang S. Neighborhood disorder, fear, and mistrust: the buffering role of social ties with neighbors. *Am J Community Psychol*. 2000;28(4):401–20.
52. Cohen-Mansfield J, Marx MS, Biddison JR, Guralnik JM. Socio-environmental exercise preferences among older adults. *Prev Med*. 2004;38(6):804–11.
53. Schutzer KA, Graves BS. Barriers and motivations to exercise in older adults. *Prev Med*. 2004;39(5):1056–61.
54. Hanibuchi T, Kawachi I, Nakaya T, Hirai H, Kondo K. Neighborhood built environment and physical activity of Japanese older adults: results from the Aichi Gerontological Evaluation Study (AGES). *BMC Public Health*. 2011;11:657.
55. Humpel N, Owen N, Leslie E. Environmental factors associated with adults' participation in physical activity: a review. *Am J Prev Med*. 2002;22(3):188–99.
56. Siu VW, Lambert WE, Fu R, Hillier TA, Bosworth M, Michael YL. Built environment and its influences on walking among older women: Use of standardized geographic units to define urban forms. *J Environ Public Health*. 2012;2012:1–7.
57. King WC, Belle SH, Brach JS, Simkin-Silverman LR, Soska T, Kriska AM. Objective measures of neighborhood environment and physical activity in older women. *Am J Prev Med*. 2005;28(5):461–9.
58. Nagel CL, Carlson NE, Bosworth M, Michael YL. The relation between neighborhood built environment and walking activity among older adults. *Am J Epidemiol*. 2008;168(4):461–8.
59. Nathan A, Pereira G, Foster S, Hooper P, Saarloos D, Giles-Corti B. Access to commercial destinations within the neighbourhood and walking among Australian older adults. *Int J Behav Nutr Phys Act*. 2012;9(1):133.

60. Stafford M, Cummins S, Macintyre S, Ellaway A, Marmot M. Gender differences in the associations between health and neighbourhood environment. *Soc Sci Med* (1982). 2005;60(8):1681–92.
61. Rech CR, Reis RS, Hino AAF, Hallal PC. Personal, social and environmental correlates of physical activity in adults from Curitiba. *Brazil Prev Med*. 2014;58:53–7.
62. Hill AB. The environment and disease: association or causation? *Proc R Soc Med*. 1965;58:295–300.

**Submit your next manuscript to BioMed Central
and take full advantage of:**

- Convenient online submission
- Thorough peer review
- No space constraints or color figure charges
- Immediate publication on acceptance
- Inclusion in PubMed, CAS, Scopus and Google Scholar
- Research which is freely available for redistribution

Submit your manuscript at
www.biomedcentral.com/submit

