

VOLUME 290 (2015) PAGES 12833–12843

DOI 10.1074/jbc.A115.647636

Domain organization and conformational plasticity of the G protein effector, PDE6.

Zhixian Zhang, Feng He, Ryan Constantine, Matthew L. Baker, Wolfgang Baehr, Michael F. Schmid, Theodore G. Wensel, and Melina A. Agosto

The GafA portion of the PDE6•ROS-1-Fab model contained physically impossible interchain clashes because the initial fitting of the GafA domain structure was carried out one chain at a time, without taking into account interactions between the two GafA chains. The model that resulted from properly fitting two copies of the GafA structure is shown in the corrected Figs. 4, B and C, and 6. The corrected model has been deposited in the Protein Data Bank with accession code 3JAB. Figs. 7 and 9 mistakenly contained duplicate images in the particle galleries, which have been removed from the corrected figures. These corrections do not affect the interpretation of the results or the conclusions of this work.

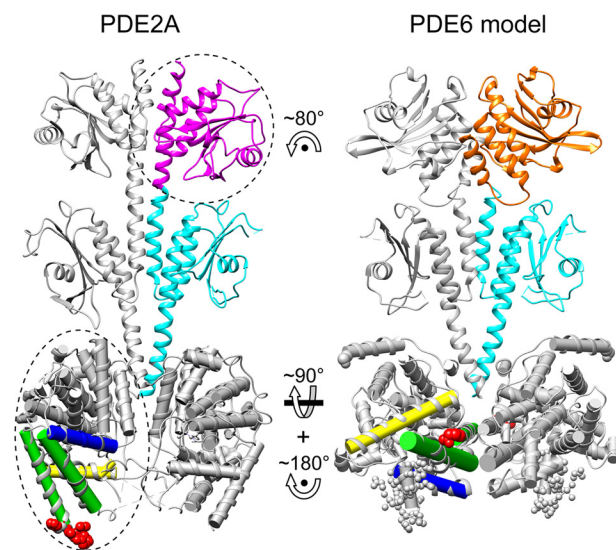
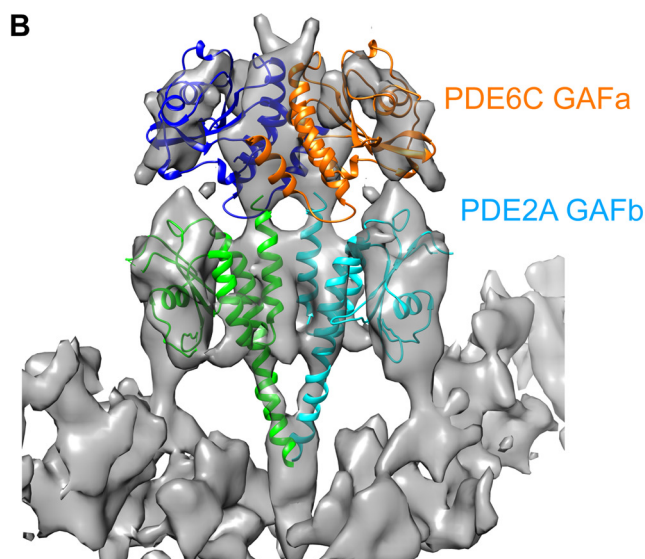


FIGURE 6

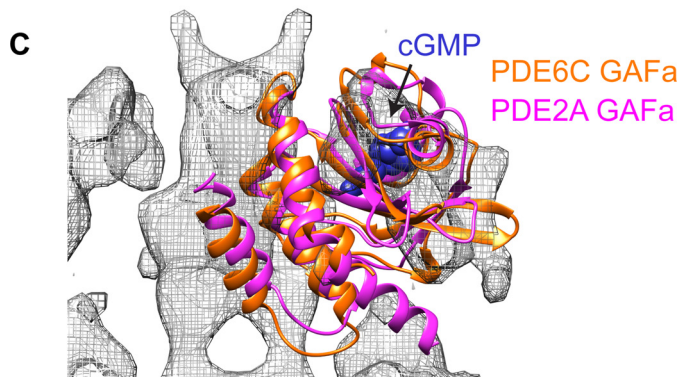


FIGURE 4

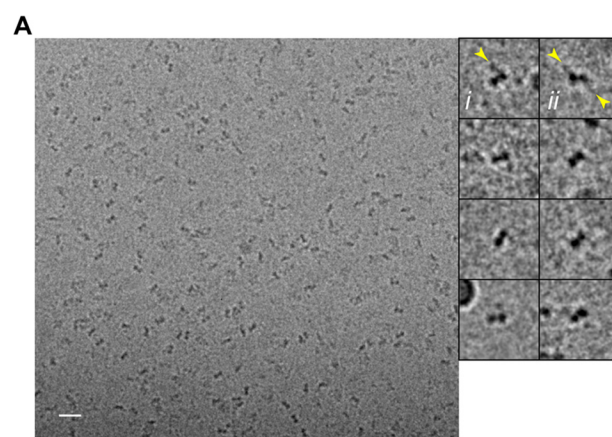


FIGURE 7

Authors are urged to introduce these corrections into any reprints they distribute. Secondary (abstract) services are urged to carry notice of these corrections as prominently as they carried the original abstracts.

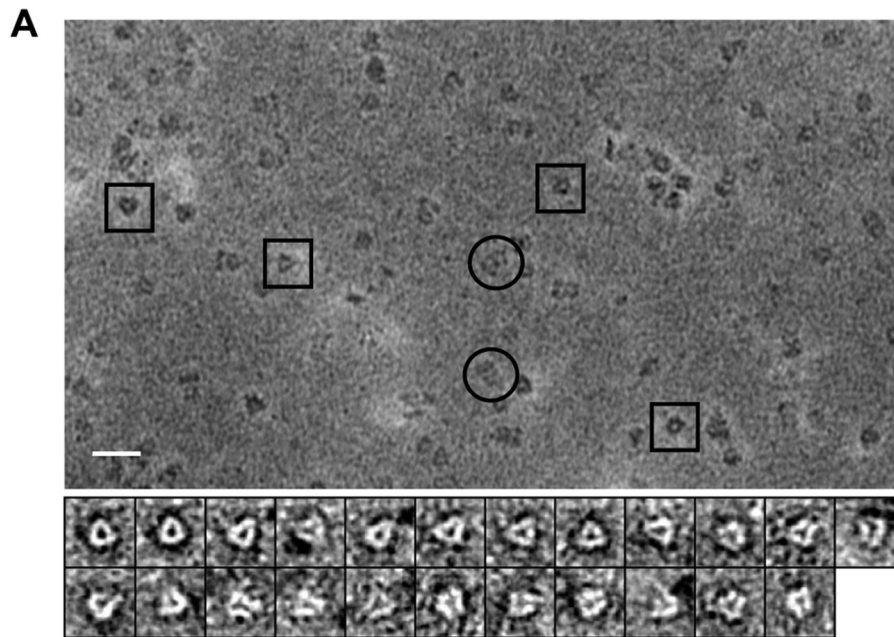


FIGURE 9