

RESEARCH ARTICLE

# The First *Paenibacillus larvae* Bacteriophage Endolysin (PlyPI23) with High Potential to Control American Foulbrood

Ana Oliveira\*, Marta Leite, Leon D. Kluskens, Sílvia B. Santos, Luís D. R. Melo, Joana Azeredo

CEB—Centre of Biological Engineering, University of Minho, 4710–057, Braga, Portugal

\* [anaoliveira@deb.uminho.pt](mailto:anaoliveira@deb.uminho.pt)



**OPEN ACCESS**

**Citation:** Oliveira A, Leite M, Kluskens LD, Santos SB, Melo LDR, Azeredo J (2015) The First *Paenibacillus larvae* Bacteriophage Endolysin (PlyPI23) with High Potential to Control American Foulbrood. PLoS ONE 10(7): e0132095. doi:10.1371/journal.pone.0132095

**Editor:** Raymond Schuch, ContraFect Corporation, UNITED STATES

**Received:** January 18, 2015

**Accepted:** June 10, 2015

**Published:** July 13, 2015

**Copyright:** © 2015 Oliveira et al. This is an open access article distributed under the terms of the [Creative Commons Attribution License](http://creativecommons.org/licenses/by/4.0/), which permits unrestricted use, distribution, and reproduction in any medium, provided the original author and source are credited.

**Data Availability Statement:** All relevant data are within the paper and its Supporting Information files, except the aminoacidic sequence of the endolysin, which is available in GenBank, accession number KF010834-21.

**Funding:** This study was supported by the Portuguese FCT—Foundation for Science and Technology (<http://www.fct.pt>) strategic funding of UID/BIO/04469/2013 unit and the European Community fund FEDER, through Program COMPETE, under the scope of the Projects FCOMP-01-0124-FEDER-007025 (PTDC/AMB/68393/2006),

## Abstract

Endolysins, which are peptidoglycan-degrading enzymes expressed during the terminal stage of the reproduction cycle of bacteriophages, have great potential to control Gram-positive pathogens. This work describes the characterization of a novel endolysin (PlyPI23) encoded on the genome of *Paenibacillus larvae* phage phiIBB\_PI23 with high potential to control American foulbrood. This bacterial disease, caused by *P. larvae*, is widespread in North America and Europe and causes important economic losses in apiculture. The restriction to antibiotic residues in honey imposed by the EU legislation hinders its therapeutic use to combat American foulbrood and enforces the development of alternative antimicrobial methods. The new endolysin described herein has an *N*-acetylmuramoyl-*L*-alanine amidase catalytic domain and exhibits a broad-spectrum activity against common *P. larvae* genotypes. Moreover, the enzyme displays high antimicrobial activity in a range of pH that matches environmental conditions (pH between 5.0 and 7.0), showing its feasible application in the field. At pH 7.0, a concentration of 0.2 μM of enzyme was enough to lyse 10<sup>4</sup> CFU.mL<sup>-1</sup> of *P. larvae* in no more than 2 h. The presence of sucrose and of the substances present in the larvae gut content did not affect the enzyme activity. Interestingly, an increase of activity was observed when PlyPI23 was previously incubated in royal jelly. Furthermore, *in vivo* safety evaluation assays demonstrated that this enzyme is not toxic to the bee larvae. The present work describes for the first time an endolysin encoded in a *P. larvae* phage that presents high potential to integrate a commercial product to control the problematic American foulbrood.

## Introduction

Endolysins (lysins) are phage-encoded enzymes that are expressed at the end of the phage life cycle in the infected bacteria to allow the release of the newly assembled virions. These enzymes target and cleave bonds of the cell wall peptidoglycan, degrading the murein layer. Despite this activity exerted from within the host, the high efficiency of the endolysins when added

PEst-OE/EQB/LA0023/2013, PEST-C/FIS/UI607/2013, RECI/BBB-EBI/0179/2012 (FCOMP-01-0124-FEDER-027462). Ana Oliveira was supported by the grant SFRH/BPD/69356/2010 and Sílvia B. Santos was supported by the grant SFRH/BPD/75311/2010, both from the FCT-Fundação para a Ciência e Tecnologia (<http://www.fct.pt>). The funders had no role in study design, data collection and analysis, decision to publish, or preparation of the manuscript.

**Competing Interests:** The authors have declared that no competing interests exist.

externally to Gram-positive cells was already reported, being already described as the most powerful biological antimicrobials, just comparable with chemical agents [1].

Lysins from phages infecting Gram-positive bacteria have a typical modular structure, being composed of at least two clearly distinct functional domains, the catalytic domain and the cell wall binding domain (CBD) separated by a binding region (linker). A sequence comparison among enzymes of the same class has shown that the catalytic domain is a conserved region, while the CBDs are much more variable [2]. Generally, these enzymes are very specific due to the presence of the CBD that targets specific bonds of the cell wall surface. So far, no resistance mechanisms or resistant phenotypes were detected after endolysin exposure probably because the lysins' targets are essential for bacterial viability [3]. These facts make endolysins promising strategies to control Gram-positive pathogens. *Paenibacillus larvae* (*P. larvae*) are Gram-positive bacteria that cause a severe disease in larvae of *Apis mellifera* and other *Apis* spp, usually known as American Foulbrood (AFB) [4]. A common strategy for the prevention and treatment of affected colonies is the use of antibiotics, particularly oxytetracycline hydrochloride [5]. However, the great concern regarding bacterial resistance [6] and the accumulation of chemical residues in honey, decreasing the quality and hindering the marketing, dampen the use of antibiotics in beekeeping industry. Indeed, in the European context, the use of antibiotics in beekeeping is not allowed (Regulation (EEC) 2377/90 and further amendments). Furthermore, at highly infectious scales, millions of spores drive disease transmission within and between colonies and to achieve an effective treatment the colony has to be burned. This causes important economic losses in the sector. Consequently, the urgent need to develop new effective methods against AFB is unquestioned.

We have previously isolated and reported the first known *P. larvae* phage genome [7] and the *in silico* analysis enabled the identification of its predicted endolysin. In the work described herein we characterized and assessed the potential of the heterologously expressed endolysin, PlyPl23, in the control of AFB, through the *in vitro* evaluation of its antimicrobial ability against *P. larvae* and *in vivo* evaluation of its safety in bee larvae.

## Materials and Methods

### Isolation of *Paenibacillus larvae* strains

*P. larvae* strains were isolated from 42 samples derived from honey, wax and brood samples from Portuguese hives with clinical symptoms of AFB. Samples were pre-treated depending on the matrix. The isolation of *P. larvae* from honey was adapted from Genersch and Otten [8]. Briefly, 1 g of honey was diluted 1:1 (w/v) in double distilled water (ddH<sub>2</sub>O), homogenized overnight at 37°C and heated at 90°C, 6 min (for spore-activation). For the treatment of brood samples, dead larvae were collected from brood combs with a sterile swab, emulsified in 500 µL ddH<sub>2</sub>O and the resultant suspension was heated at 90°C, 6 min. Wax samples (1.5 g) were dissolved in 10 mL benzene (1:10 w/v), then 2 mL of the resultant suspension was diluted 1:4 (v/v) in ddH<sub>2</sub>O, and the aqueous phase was recovered [9]. After treating each type of sample, 100 µL of the obtained suspension was seeded in MYPGP agar (10 g.L<sup>-1</sup> Mueller-Hinton, 15 g.L<sup>-1</sup> yeast extract, 3 g.L<sup>-1</sup> K<sub>2</sub>HPO<sub>4</sub>, 1 g.L<sup>-1</sup> Na-pyruvate, 20 g.L<sup>-1</sup> agar, and 2% glucose). Plates were incubated at 37°C under 5% CO<sub>2</sub> and evaluated for bacterial growth after 3 to 6 days [10].

### 16S-PCR identification of *P. larvae* and rep-PCR analysis

Isolates from field samples were identified as *P. larvae* based on a positive PCR result of the 16S rRNA gene. The primers used (Table 1) amplified a 1106 bp fragment [11].

The bacterial DNA was purified using the NucleoSpin Tissue kit (Macherey-Nagel) and amplified using KapaTaq (Kapa Biosystems) according to the manufacturer's instructions. The

**Table 1. Primers and PCR conditions used for *P. larvae* 16S-PCR identification, rep-PCR analysis and PlyPI23 cloning.**

Amplicon	Sequence (5'-3')	Annealing (°C.s-1)	Extension (s)
16S rRNA	F: CTTGTGTTTCTTTCGGGAGACGCC; R: TCTTAGAGTGCCACCTCTGCG	55/30	90
Rep-PCR	ERIC2: AAGTAAGTGACTGGGGTGAGC; ERIC1R: ATGTAAGCTCCTGGGGATTCA	47/45	120
PlyPI23	Ply23F: AGAAGCCATATGATGGAAATCAGACAGATGCTAGTAGGA ( <i>Nde</i> I); Ply23R: TACGATGGATCCTCACAGGCACCCACTCGCCAAAA ( <i>Bam</i> HI)	53/30	60

doi:10.1371/journal.pone.0132095.t001

PCR product was analyzed on a 1% agarose gel stained with SYBR Safe (NZYTech) and visualized under UV light.

Typing of *P. larvae* strains was performed through genomic fingerprinting. Rep-PCR (repetitive sequence-based PCR), was carried as reported by Genersch and Otten (2003)[8]. The PCR was done in the same conditions as previously, using the primers described in Table 1. The PCR product was analyzed on a 2% agarose gel, as described above.

### Bioinformatics analysis of the phage phiIBB\_P123 endolysin gene

The annotation of the *Siphoviridae P. larvae* phage phiIBB\_P123 identified gp21 as an endolysin protein, designated as PlyPI23 [7]. *In silico* analysis was carried out by searching the non-redundant protein database using BLASTP [12] with the amino acid sequence of PlyPI23 as query (GenBank accession number KF010834-21). Functional domains were searched against the Pfam database [13], and the HHpred [14, 15]. The presence of a signal peptide was searched using SignalP 4.0 [16]. The lysin molecular weight (MW), isoelectric point (pI) and charge were predicted using Compute pI/Mw tool, available at [http://web.expasy.org/compute\\_pi/](http://web.expasy.org/compute_pi/). The identification of the putative amidase catalytic sites was performed using the CDD database [17].

### Cloning, expression, and purification of PlyPI2

Using specific primers (Table 1), the endolysin ORF was amplified by PCR through KapaTaq (Kapa Biosystems) with the phage DNA as template (purified with the GRS Viral DNA/RNA Purification Kit, Grisp) according to manufacturer's instructions. The PCR product was confirmed on a 0.8% agarose gel.

The amplified gene was cloned into pET28a (Novagen), Kan<sup>R</sup>, conserving the plasmid N-terminal hexahistidine (His)-tag sequence, and used to transform *E. coli* JM109 cells. The correct insertion of the gene was confirmed by sequencing and the construct was then cloned into competent *E. coli* BL21 (DE3). Expression of the recombinant PlyPI23 in *E. coli* BL21 (DE3) was induced with 0.5 mM isopropyl-b-D-thiogalactopyranoside (IPTG) (Fisher Scientific) when cells reach an OD<sub>620nm</sub> of 0.5 (grown at 37°C, 120 rpm, in a Biosan ES-20/60 orbital shaker-incubator), followed by an overnight incubation at 16°C, 150 rpm, in a Panasonic MIR-S100 orbital shaker. Bacterial cells were harvested with centrifugation at 4 000 x g for 20 min, and the pellet was suspended in 1/10 volumes of lysis buffer (20 mM Na<sub>2</sub>H<sub>2</sub>PO<sub>4</sub>, 500 mM sodium chloride, pH 7.4). Afterwards, 10 mM imidazole (Fisher Scientific) was added and the cell disruption was completed by thaw-freezing (3 cycles, from -80°C to room temperature) followed by a 5 min sonication (Cole-Parmer Ultrasonic Processor) for 10 cycles (30 s pulse, 30 s pause), 30% amplitude. Insoluble cell debris was removed by centrifugation (9 500 x g, for 30 min, 4°C) and the supernatant was filtered through 0.22 µm PES membrane. Purification was done through 1 mL Ni-NTA agarose stacked in a Polypropylene column (Qiagen), previously equilibrated with 10 mM imidazole, making use of the protein His-tag. The washing step was

performed using protein-dependent imidazole concentrations (the lysis buffer was supplemented with 20 mM imidazole in the first washing and 40 mM imidazole in the second washing), and then the sample was eluted in a 300 mM imidazole lysis buffer solution. Samples of each fraction (0.5 mL) were analyzed by SDS-PAGE.

The buffer was changed to the storage buffer (20 mM Tris, pH 8.0, 30% glycerol) using the centrifugal filters Amicon Ultra—0.5 mL (Millipore). The purified protein was stored at -20°C in the same buffer.

### Lytic activity assay

The PlyPl23 lytic activity was determined by measuring the OD<sub>620</sub> of the bacterial suspension in a Multiskan FC spectrophotometer (Thermo Fisher) or by direct CFU counting. Initially, *P. larvae* cells were exponentially grown (OD<sub>620</sub> = 0.6–0.8) in MYPGP broth, harvested (10 000 x g, 5 min), washed twice and suspended in the reaction buffer, Tris 20 mM pH7, alone or supplemented, depending on the assay. In a 96-well plate, a volume providing 2.0 μM of the dialyzed endolysin, which was set as the optimal activity on OD<sub>620</sub> reduction tests, was added to 100 μL of bacterial suspensions. In the control, the volume of endolysin was substituted by its storage buffer. Before each reading, the plate was shaken for 60 s to homogenize the suspension. Except for the lytic spectra, all the tests were performed with the *P. larvae* strain Pl02-23, the host used for phiIBB\_Pl23 amplification [7]. The reactions were performed at 37°C, which is similar to the hive temperature [18], for 60 min or 120 min. The lytic activity was calculated according to Eq 1.

$$\frac{(r_{t0} - r_{t120}) - (c_{t0} - c_{t120})}{c_{t0}} * 100 \quad (1)$$

Where, *r* and *c* are the suspension OD<sub>620</sub> of the reaction and control respectively and *t0* and *t120* are the samples at time zero min and 120 min respectively. The relative lytic activity was obtained, calculating the ratio between the lytic activity of each test and the higher lytic activity obtained in the experiment. To evaluate the PlyPl23 effect by direct CFU enumeration, the total volume per reaction was 200 μL, in a 96-well plate. The dialyzed endolysin was added at the desired concentration in the reaction tests and its volume substituted by the storage buffer, in the control tests. After incubation at 37°C, 10 μL of enzyme-treated and non-treated bacterial suspensions were collected at 0, 30, 60 and 120 min post-reaction. The suspensions were serial diluted and 100 μL were plated on MYPGP agar. At the end of the reaction (120 min), 100 μL of the remaining volume were plated with no dilutions, to increase the detection limit of the assay. The lytic activity was calculated as mentioned above but using the values of CFU. mL<sup>-1</sup> instead of OD<sub>620</sub>. All experiments were executed in at least three independent assays.

**Effect of pH.** The optimal pH for the endolysin reaction was tested by assessing the OD<sub>620</sub> variation, after adding PlyPl23 to *P. larvae* strain Pl02-23 suspensions at pH levels ranging from 2.0 to 10.0, in a 1.0 step. The different pH solutions were prepared in Universal buffer (150 mM KCl, 10 mM KH<sub>2</sub>PO<sub>4</sub>, 10 mM Na-citrate and 10 mM H<sub>3</sub>BO<sub>4</sub>), adjusted with HCl or NaOH [19].

**Effect of ionic strength.** For a better assessment of the enzyme performance in the field conditions, these tests were performed at the pH levels of 5.0, 6.0 and 7.0 (larvae and honey bee intestine). For each pH, the influence of NaCl on PlyPl23 lytic activity was evaluated (measuring the OD<sub>620</sub> variation) by adding different concentrations of NaCl: 0, 100 and 200 mM.

**PlyPl23 lytic spectra.** A total of 23 *P. larvae* strains and 4 negative control strains (*Bacillus cereus*—CEB collection, *Bacillus subtilis*—DSMZ 10), *Lactobacillus paracasei*—CECT 277 and *Lactobacillus pentosus*—CECT 4023) were used to evaluate the lytic spectra of PlyPl23, by

assessing the OD<sub>620</sub> variation. The endolysin was added to each strain, previously suspended in Tris pH 7.0 (20 mM). The lytic spectrum obtained for the phage phiIBB\_P123 was performed against the same strains to compare the antimicrobial effect. This was achieved by adding a drop of 10 µL of phage (10<sup>8</sup> PFU.mL<sup>-1</sup>) to the formerly tested bacteria. For that, strains were grown until mid-log phase as described and 100 µL of each suspension were incorporated in 3.0 mL MYPGP 0.5% agar. After dried the plates, the phage was spotted on the lawn. After an overnight incubation at 37°C and 5% CO<sub>2</sub>, the presence of lysis zones were indicative of strain sensitivity to phiIBB\_P123.

**Enzyme concentration and in vitro antimicrobial activity assay.** The assessment of the optimal enzyme concentration to reduce *P. larvae* until non-detectable levels was done by direct CFU enumeration, with 0.2 and 2.0 µM PlyP123 and 10<sup>4</sup>, 10<sup>5</sup> and 10<sup>6</sup> CFU.mL<sup>-1</sup> initial bacteria concentration. For that, exponentially grown (OD<sub>620</sub> ≈ 0.6) P102-23, suspended in Tris pH 7.0 (20 mM), 200 mM NaCl, was diluted 10<sup>2</sup>, 10<sup>3</sup> and 10<sup>4</sup>-fold in the same buffer. For each bacterial suspension, the enzyme was added at both indicated concentrations and the activity was calculated as described above.

**Effect of sucrose, larval gut content and royal jelly.** The effect of several conditions regarding the practical application of PlyP123 activity was evaluated. To assess the larval gut content effect, worker larvae from an apiary with colonies of *Apis mellifera iberiensis*, located in the north of Portugal (Famalicão), were gently grafted with a larvae-picking tool (1<sup>st</sup> and 2<sup>nd</sup> instar in one group; 3<sup>rd</sup> and 4<sup>th</sup> instar in the other group). The larvae were weighted, suspended in NaCl 0.9% (1:1 w/v) and homogenized with glass beads by vortexing for 2 min. The resultant suspension was filtered through 0.22 µm PES membrane. This was called “homogenized larvae” (HL) and was assumed to contain the substances present in larvae gut content to which the endolysin would be exposed in field conditions. The *P. larvae* strain P102-23 was suspended in 100 µL HL and 2.0 µM PlyP123 was added to the test sample. The effect of HL on the endolysin activity was evaluated by measuring the OD<sub>620</sub> variation.

The evaluation of the royal jelly (RJ) effect on PlyP123 activity was made to mimic the likely contact with a similar product in which larvae from the first instars are floating [20], and that might happen after spray administration of the enzyme to brood in field conditions. RJ was purchased from a Portuguese supplier (Apiguarda), and after confirming the absence of *P. larvae* spores, as described above for honey, it was prepared for tests through dilution (1:1 w/v) in ddH<sub>2</sub>O. Before the activity tests, PlyP123 was diluted (1:10 v/v) in the prepared RJ suspension to a final concentration of 20 µM and incubated for 1 h at 37°C. After, 20 µL of the resultant suspension was added to 180 µL of 10<sup>7</sup> CFU.mL<sup>-1</sup> *P. larvae* (P102-23), previously suspended in Tris pH 7.0 (20 mM), 200 mM NaCl (final concentration of 2.0 µM PlyP123). The RJ effect on PlyP123 activity was evaluated by CFU counts.

The effect of two different concentrations of sucrose, 25% and 50%, on the enzyme activity was also tested to assess the efficacy of administering the product with sucrose due to its suitability for beekeeper practices. For this, PlyP123 was previously diluted 1:10 (v/v) in each sucrose concentration (final enzyme concentration of 20.0 µM) and then 10 µL were added to 90 µL of strain P102-23, previously suspended in Tris pH 7.0 (20 mM), 200 mM NaCl (final enzyme concentration of 2.0 µM). The activity was evaluated through OD<sub>620</sub> variation.

Finally, the stability of PlyP123 on simulated field conditions occurring before larvae ingestion was assessed. Briefly, the enzyme was diluted to a final concentration of 20.0 µM in a suspension composed of 1:1 (w/v) RJ, 50% sucrose (final concentration), 200 mM NaCl, and incubated for 6 h at 37°C. The activity assays were performed by adding 10 µL of the previously incubated solution to 90 µL of a P102-23 suspension strain in Tris pH 7.0 (20 mM), 200 mM NaCl. The OD<sub>620</sub> variation was calculated.

**Development of resistances in *P. larvae* induced by PlyPI23.** In order to assess the development of resistances in surviving colonies a procedure based on Schuch et al. [21] was performed with the following modifications. The concentration of endolysin able to inhibit 50% of bacterial isolates ( $MIC_{50}$ ) was previously determined to be 0.2  $\mu M$ . After that, 100  $\mu L$  of an overnight suspension of PlyPI23 was incubated for 120 min with 0.2  $\mu M$ , after which the total volume was plated onto MYPGP agar plates. After an overnight incubation, ten different colonies were individually inoculated in MYPGP broth and incubated overnight. The cultures were regrown until mid-log phase and a volume of 100  $\mu L$  was used to test susceptibility to 2.0  $\mu M$  PlyPI23. The  $OD_{620}$  variation was monitored for 120 minutes. At the same time, another 100  $\mu L$  from the same culture were incubated with 0.2  $\mu M$  of the enzyme ( $MIC_{50}$ ) to induce resistance and the resultant suspensions were plated on MYPGP agar plates. This procedure was repeated ten times resulting in ten cycles of bacteria exposition to the enzyme at  $MIC_{50}$  in an attempt to induce resistance to the endolysin.

**Evaluation of the stability of PlyPI23 and storage conditions.** The stability of the endolysin in storage buffer was tested to assess the best storage conditions. The evaluation of the enzyme activity following storage at room temperature (RT), 4°C, and -20°C (supplemented with 30% glycerol), for 22 weeks was monitored periodically. The effect of lyophilization was also evaluated, and the  $OD_{620}$  variation was assessed after reconstitution of the lyophilized sample with ddH<sub>2</sub>O. The activity tests were performed with PI02-23 suspended in 100  $\mu L$  of the reaction buffer referred above, for 120 min, at 37°C, as described above.

## Effect of PlyPI23 on *P. larvae* spores

The effect of PlyPI23 was also assessed on spores and germinating spores of *P. larvae*.

***P. larvae* spores' preparation.** *P. larvae* spores' suspensions were prepared based on the procedure described by Alvarado et al. [22], with some modifications. Briefly, PI02-23 strain was incubated in MYPGP agar, at 37°C under 5% CO<sub>2</sub> for 8 days. Ice-cold ddH<sub>2</sub>O water was poured onto bacterial lawns, stored at 4°C for about 5 h, and the suspension was then collected. Spores were pelleted by centrifugation (8 000 x g, 5 min) and suspended in fresh ddH<sub>2</sub>O. After five washing steps spores were purified following a methodology described by Sacks and Alderton [23]. In this procedure an aqueous two-phase system distribution, composed of potassium phosphate (PB)-polyethylene glycol (PEG)-water was used. A gradient was created by dissolving 5.6 g of PEG 4000 in 17 mL of 3 M phosphate buffer (pH 7.4), allowing for phase separation. Afterwards, the spores' suspension was carefully poured on the top layer (total volume of 50 mL) and centrifuged at 1 500 x g for 3 min (20°C). Next, the upper phase (where spores were concentrated) was carefully recovered. Spores were washed five times, as described above, and suspended in ddH<sub>2</sub>O.

The effectiveness of the separation procedure and consequent spore purification was determined by microscopy (Olympus BX51, 1000 x magnification), with the staining technique described by Schaeffer and Fulton [24]. Summarizing, to stain endospores, 10  $\mu L$  of air-dried spore suspension deposited on a glass slide were covered with a blotting paper saturated with malachite green (0.5% (w/v)), and placed over a container of boiling water. After 5 min, the slide was washed with ddH<sub>2</sub>O and counterstained with safranin (0.25% w/v) for 30 s, to stain vegetative cells. The slide was washed again with dH<sub>2</sub>O, allowed to dry and examined for the presence of spores (bright green contrasting with red to pink vegetative cells).

**Activity of PlyPI23 on *P. larvae* spores.** Spores ( $OD_{580} \approx 0.5$ ) were heat activated (HA) at 70°C for 30 min, and 100  $\mu L$  were used for each test, performed in a 96-well plate. The following conditions were tested: i) Effect of PlyPI23 on spores suspended in Tris pH 7.0; ii) effect of PlyPI23 on spores suspended in germinants (a 3 mM L-tyrosine – 3 mM uric acid solution, as

described by Alvarado et al. [22]); iii) effect of PlyPl23 on spores 2 h after germinants addition. Controls were made by replacing the enzyme by its storage buffer. The OD<sub>580</sub> variation was monitored for 7 h (every 10 min until 2 h, every 30 min until 4 h and every 60 min until 7 h).

In order to monitor the spores germination state (bright green spores on dormant state contrasting with red to pink spores on germinating state), 10  $\mu$ L of each sample were collected from reactions at 0 min, 30 min, 2 h and 7 h, and examined by microscopy. Staining and subsequent procedures were performed as described above.

## Toxicity tests in artificially reared larvae

No specific permissions were required to raise honeybee larvae in laboratory conditions. Under the Laboratory Animals Directive of the EU (2010/63/EU), reissued in 2010, experiments with arthropods do not require authorities' approval. The *in vivo* studies performed in the scope of this work did not involve endangered or protected species.

Despite considering two feasible ways of administering the endolysin, orally to adult bees or spraying directly to bee larvae, the *in vivo* assays described herein were performed to assess the potential toxic effect of the endolysin only to bee larvae. It was assumed that if there were no harmful effects in young larvae, the same would happen in adult bees, which present a more adapted gut.

The artificial diet to feed larvae, obtained from the apiary mentioned above, was prepared according to Aupinel [25], and consisted of 50% (w/v) RJ and 50% of an aqueous solution of 12% (w/v) D-glucose, 12% (w/v) fructose and 2% (w/v) yeast extract. Just before feeding, the sugar solution was mixed with fresh RJ 1:1 (w/w) and warmed to 35°C. Larvae measuring between 1 and 2 mm (major length of the C-shape, here mentioned as "C-length") were grafted from each comb with a larvae-picking tool and gently deposited on a 96-well plate (one larvae per well) previously filled with 50  $\mu$ L of diet. The plate was transferred into an exicator containing a saturated solution of K<sub>2</sub>SO<sub>4</sub> that provided a 96% relative humidity atmosphere (confirmed with a hygrometer), closed hermetically and placed in an incubator at 35°C. In order to prevent fungal growth, a 10% (w/v) ground propolis infusion was prepared in water (based on Pujirahayu et al. [26]), and after an overnight incubation at 40°C, the decanted suspension was diluted 1:4 (v/v) in the used K<sub>2</sub>SO<sub>4</sub> saturated solution.

A volume of 50  $\mu$ L of diet was provided to the larvae with a micropipette once a day. After 24 h of grafting (adaptation period) and until the end of the experiment, 13 viable larvae were fed with diet containing 2.0  $\mu$ M PlyPl23 and other 13 larvae with diet containing buffer Tris pH 8.0 (20 mM) replacing the volume of PlyPl23. Larvae were measured daily for the subsequent 4 days and weighted at the end of the trial (5<sup>th</sup> day). The variation in the C-length and weight between the 2<sup>nd</sup> and the 5<sup>th</sup> day was compared between both groups.

## Statistical analysis

Statistics were calculated by using Prism 5 software (GraphPad, CA, USA). Mean and standard deviations were determined for three independent experiments and results were presented as mean  $\pm$  SD. The assays described on 2.5.1, 2.5.4, 2.5.5, 2.5.6 and 2.6.2 were compared using one-way analysis of variance (ANOVA) and Bonferroni post-hoc test. The assay described on 2.5.2 was compared using two-way ANOVA and Bonferroni post-hoc test. For all tests a confidence level of 99.9% was used.

Regarding the *in vivo* results, the variability between the sample (measured by the standard deviation) was estimated in 10% based on previous tests with artificially raised larvae, and the minimum difference between the groups considered as meaningful (with a statistical power of

95%) was 15%. Based on these assumptions, the minimum experimental units (larvae) that should be used in this study is 11 per group [27].

## Results

### Identification and expression of the endolysin from phage phiIBB\_PI23

*In silico* analysis identified gp21 as an endolysin, which we have designated PlyPI23. PlyPI23 is composed of 224 residues with a predicted MW of 25.8 kDa, a pI of 6.08 and with no identified signal peptide. The prediction tools BlastP, Pfam and HHpred identified an *N*-acetylmuramoyl-*L*-alanine amidase belonging to the Amidase\_2 family (Pfam 01510) at the N-terminus encompassing two third of the protein. CDD database identified 5 putative amidase catalytic residues: two histidines (position 29 and 129), a phenylalanine (position 53), a lysine (position 135) and a cysteine (position 137). The remaining third, the C-terminus did not display homology to any identifiable domain. BlastP analysis showed that the closest relatives to PlyPI23 are five *Bacillus* phage endolysins, with homologies to the N-terminal region, coverage ranging from 66% to 71% and identities of at least 59% to 72% (e-values:  $5 \times 10^{-63}$  to  $1 \times 10^{-81}$ ). Furthermore, no significant relatives were found among the *Paenibacillus* genus.

PlyPI23 was cloned in pET28a and expressed in *E. coli* BL21 (DE3) and further purified using affinity chromatography. SDS-PAGE showed a band near 25.0 kDa corresponding to an overexpressed protein, which was consistent with the calculated molecular weight of the lysin, 25.8 kDa (S1 Fig).

### PlyPI23 Lytic activity

**Effect of pH.** The effect of pH on PlyPI23 lytic activity was investigated using Universal buffer in order to cover a broad range of pH. Results revealed that no differences in PlyPI23 relative activity were observed ( $p > 0.05$ ) between pH 5.0 and 9.0 (Fig 1). At the pH values of 2.0, 3.0, 4.0 and 10.0 it was not possible to recover any bacterial cells in the controls (without endolysin). Consequently, the endolysin activity for these pH values could not be assessed. Based on these results, pH 7.0 was set for the following assays giving its proximity with the larva gut pH [22].

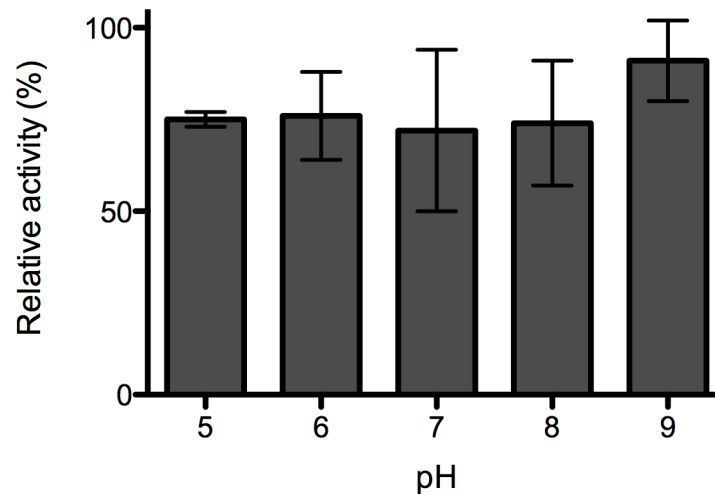
**PlyPI23 lytic spectrum.** The lytic spectrum of PlyPI23 was assessed against a panel of 20 *P. larvae* isolates and 4 additional strains belonging to other related bacterial species (*Bacillus cereus*, *Lactobacillus paracasei*, *Lactobacillus pentosus*, *Bacillus subtilis*), and compared with that of the respective phage phiIBB\_PI23. *P. larvae* strains were isolated from 42 different environmental samples and belong to ERIC I (16 strains) and ERIC II (4 strains) genotypes (Table 2).

Results showed that while the phage phiIBB\_PI23 was able to lyse 16 of the 20 strains (80%), its endolysin was active against all the tested *Paenibacillus larvae* strains. The *Bacillus* and *Lactobacillus* strains were not lysed by the phage or by the enzyme.

**Effect of ionic strength.** Different concentrations of NaCl (0, 100 and 200 mM) were used to evaluate the possibility of improving enzymatic activity at pH 5.0, 6.0, and 7.0. This pH range covers the intestinal pH of larvae and adult bees [22] where the enzyme needs to be active. In fact, two feasible ways of administering the endolysin to larvae bees might be i) the incorporation in a sucrose solution to be supplied to adult bees that will subsequently feed the larvae; ii) spraying the suspension directly to larvae combs so that larvae can eat it.

Statistical analysis revealed that for pH 5.0 and 6.0, no significant differences ( $p > 0.05$ ) were observed in the enzyme activity between any of the tested NaCl concentrations (Fig 2). For pH 7.0 the addition of 200 mM enabled a significantly higher activity compared with 0 mM ( $p < 0.001$ ) but the differences between 0 mM and 100 mM, and between 200 mM and 100 mM





**Fig 1. Effect of pH on PlyPI23 lytic activity.** PlyPI23 activity on *P. larvae* PI02-23 at different pH values, ranging from 5 to 9. Relative lytic activity was obtained as the ratio between the lytic activity of each test and the highest value obtained (the reference value was 70.9% lytic activity). Each column represents the mean of triplicate experiments, and error bars indicate the standard deviation.

doi:10.1371/journal.pone.0132095.g001

were not significant. Moreover, for pH 6.0 and 7.0 the average enzyme activity was higher with 200 mM NaCl. Based on these results, the antimicrobial activity of the enzyme was tested in pH 7.0 (matching the bee larvae intestine), supplemented with 200 mM NaCl.

**Enzyme concentration and *in vitro* antimicrobial activity assay.** The minimum concentration of PlyPI23 acting against *P. larvae* was examined. Initial concentrations (IC) of the *P. larvae* strain PI02-23,  $10^4$ ,  $10^5$ , and  $10^6$  CFU.mL<sup>-1</sup>, were tested. These IC are expected to be harmful to bee larvae, based on previous bioassays reporting high mortalities with an infectious *P. larvae* dose of  $5 \times 10^3$  CFU.mL<sup>-1</sup> [28]. The results of the activity tests depicted in Fig 3 illustrates that for all tested bacterial IC, the use of either 0.2 μM or 2.0 μM PlyPI23 did not cause significant differences between them ( $p < 0.001$ ) on the bacterial reduction, in any of the 3 considered time periods, 30, 60 and 120 min. The activity of the enzyme in a  $10^4$  CFU.mL<sup>-1</sup> suspension allowed the reduction of cells to non-detectable levels just after 30 min. The limit of

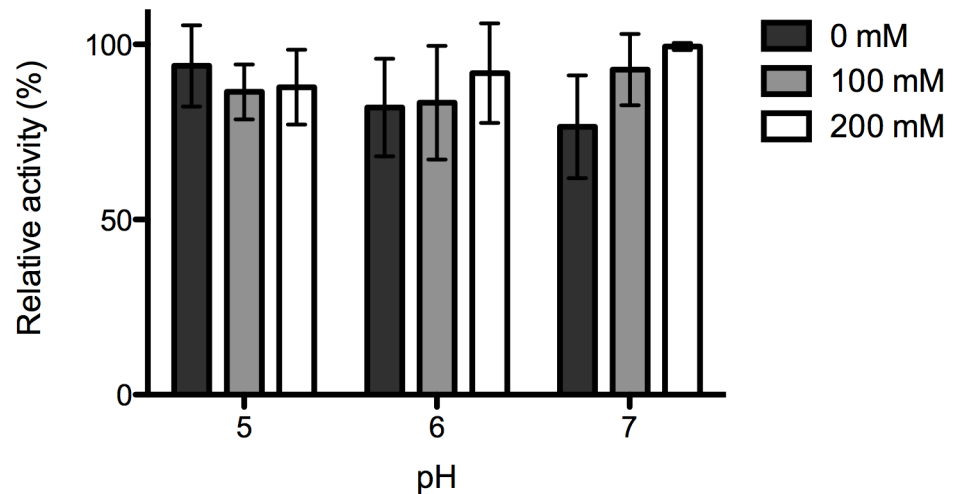
**Table 2. Lytic spectra of PlyPI23 and the phage phiIBB\_PI23 against 20 *P. larvae*, 2 *Bacillus* and 2 *Lactobacillus* strains.** NA: Non applicable.

Strain <sup>a</sup>	Source	ERIC genotype	phiIBB_PI23	PlyPI23
PI01- (01, 03, 07, 07b2, 13, 14, 18)	honey	I	+	+
PI01- (02, 10, 12, 19)	honey	II	+	+
PI02- (21, 30b, 30c)	dead larvae	I	-	+
PI02- (23 <sup>*</sup> , 27, 29, 30a, 31)	dead larvae	I	+	+
PI03-28	wax	I	-	+
<i>Bacillus cereus</i> (CEB Bc-01)	dead larvae	NA	-	-
<i>Lactobacillus paracasei</i> (CECT 277)	sour milk	NA	-	-
<i>Lactobacillus pentosus</i> (DSM 20314)	corn silage	NA	-	-
<i>Bacillus subtilis</i> (DSMZ 10)	unavailable	NA	-	-

\* Mentioned as H23 in Oliveira *et al.* (2013).

<sup>a</sup> Criteria of the strain nomenclature—species: *Paenibacillus larvae* (PI); source: 01—honey; 02—dead larvae; 03- wax; reference of the isolate: number between brackets.

doi:10.1371/journal.pone.0132095.t002

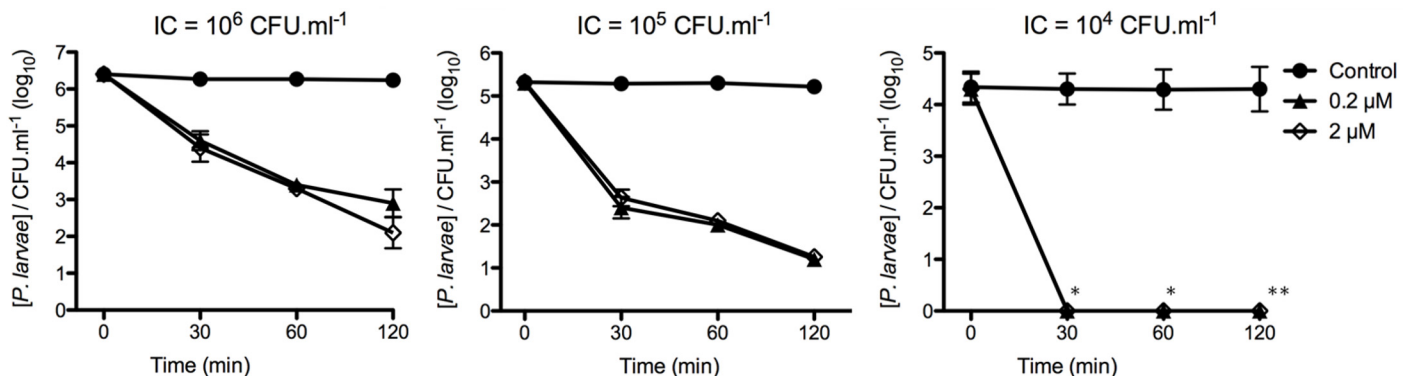


**Fig 2. Effect of ionic strength on PlyPI23 lytic activity.** PlyPI23 activity on *P. larvae* PI02-23 at different pH values (pH 5.0, 6.0, and 7.0) supplemented with 0, 100 and 200 mM NaCl. Relative lytic activity was obtained as the ratio between the lytic activity of each test and the highest value obtained (the reference value was 50.4% lytic activity). Each column represents the mean of triplicate experiments and error bars indicate the standard deviation.

doi:10.1371/journal.pone.0132095.g002

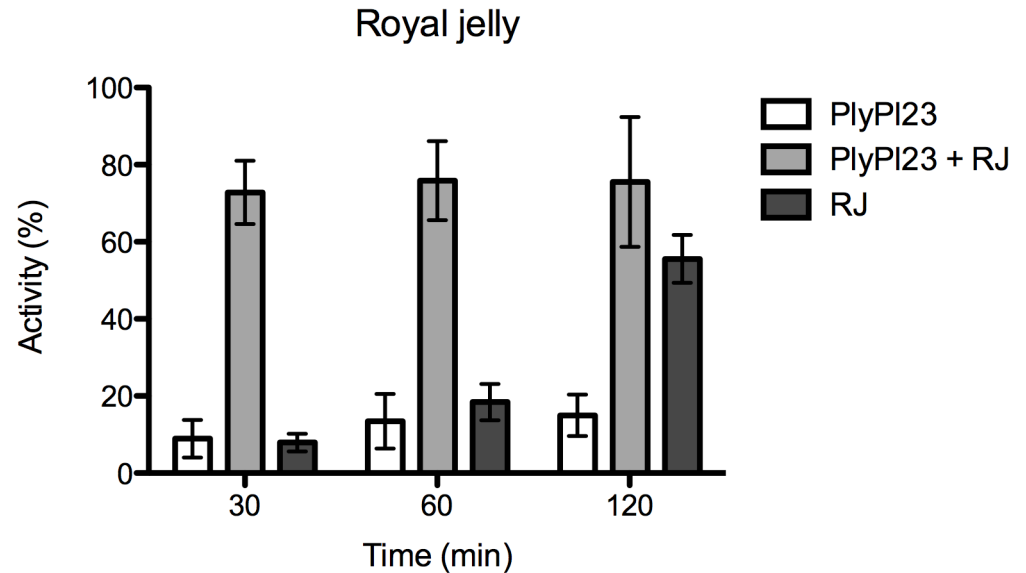
detection for the method applied was 100 CFU.mL<sup>-1</sup> at 30 and 60 min, and 10 CFU.mL<sup>-1</sup> at 120 min. When the enzyme was added to a 10<sup>5</sup> CFU.mL<sup>-1</sup> planktonic culture, after 30 and 60 min, an average log reduction of 2.8 and 3.3 log was observed, with an average decrease of 3.9 log after 120 min. For an IC of 10<sup>6</sup> CFU.mL<sup>-1</sup>, the higher average reduction obtained after 120 min was 3.8 log in average, however the decrease observed was slower than with the IC 10<sup>5</sup> CFU.mL<sup>-1</sup>: 1.7 and 2.8 log in average, respectively 30 and 60 min post-reaction.

**Effect of sucrose, larval gut content and royal jelly.** The effect of sucrose, HL and RJ on PlyPI23 activity was assessed, regarding the practical application. No differences in PlyPI23 activity after previous contact with 25% or 50% sucrose solution were observed. The enzyme activity in HL also remained unaffected in a 50% sucrose solution (prepared in 200 mM NaCl), supplemented with RJ (1:1 w/v) when incubated for 6 h at 37°C. Moreover, besides the enzyme was not inactivated, its activity was enhanced after previous contact with RJ, itself an antimicrobial substance (Fig 4). Results revealed a synergistic antimicrobial effect between PlyPI23



**Fig 3. PlyPI23 activity on different *P. larvae* concentrations.** PlyPI23 activity on *P. larvae* PI02-23, at different enzyme (0.2 μm and 2.0 μm) and bacteria concentrations (10<sup>6</sup>, 10<sup>5</sup> and 10<sup>4</sup> CFU.mL<sup>-1</sup>). \*Detection limit of 100 CFU.mL<sup>-1</sup>; \*\* Detection limit of 10 CFU.mL<sup>-1</sup>.

doi:10.1371/journal.pone.0132095.g003



**Fig 4. Effect of RJ on PlyPI23 activity.** Activity of the enzyme after incubation in RJ for 1 h at 37°C. Results were recorded at 30, 60 and 120 min. Each column represents the mean of triplicate experiments and error bars indicate the standard deviation.

doi:10.1371/journal.pone.0132095.g004

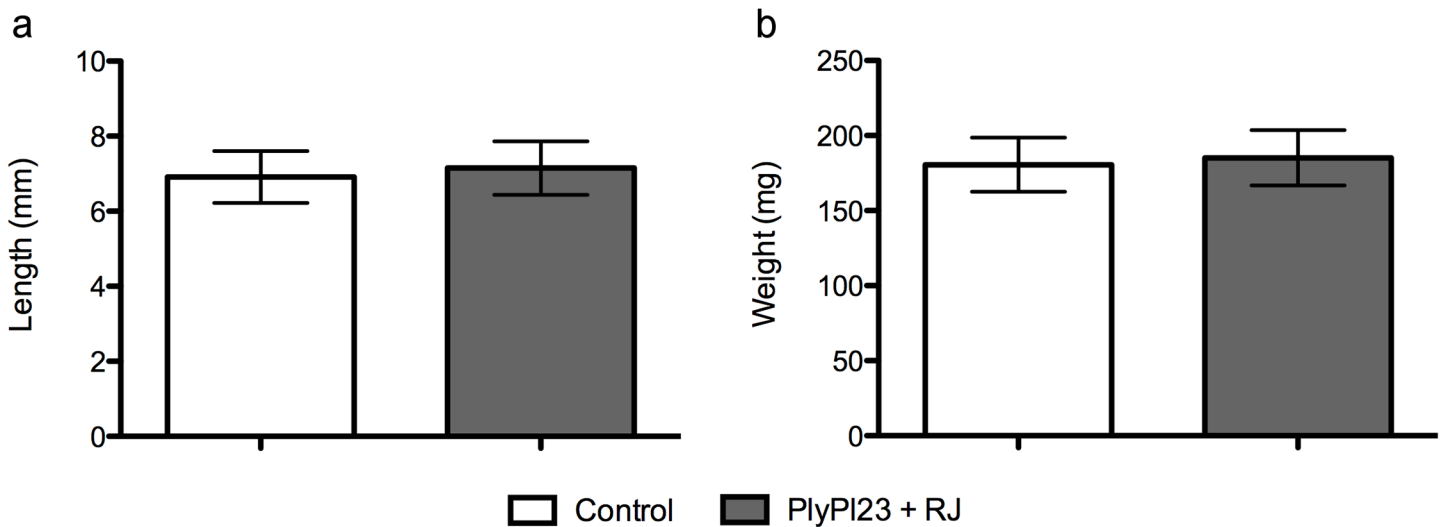
and RJ after 30 min and 60 min (the activity obtained for PlyPI23+RJ was 72.8% and 75.9%, respectively, higher than the addition of the activity of each component individually (30 min: 8.9% PlyPI23 and 7.9% RJ; 60 min: 13.5% PlyPI23 and 18.4% RJ), and an additive effect 120 min post-reaction (the activity of PlyPI23+RJ (75.6%) was statistically similar ( $p < 0.001$ ) to the activity of PlyPI23 (15.0%) + RJ (55.6%). It was also observed that the combination PlyPI23+RJ allowed a faster decrease in cell concentration, since the activity recorded 30 min after reaction with the combined antimicrobials was similar to the obtained after 120 min with the additive effect of the same substances, individually.

**Development of resistances in *P. larvae* induced by PlyPI23.** In order to evaluate the development of resistance in *P. larvae* induced by PlyPI23, a lower concentration of enzyme ( $MIC_{50}$ ) was used aiming at inducing resistant colonies. The experiment showed that the colonies recovered from the exposure at  $MIC_{50}$  of the endolysin were still sensitive to 2.0  $\mu M$  of PlyPI23 (data not shown), even after ten cycles.

**Evaluation of the stability of PlyPI23 and storage conditions.** Results from the enzyme stability revealed that, when stored at 4°C and RT, the endolysin loses its activity after one and five weeks, respectively. The storage of PlyPI23 at -20°C for 22 weeks did not affect the enzyme activity (S2 Fig). The activity of the endolysin before lyophilization and after reconstitution remained the same ( $p > 0.05$ ) (data not shown).

**Effect of PlyPI23 on spores.** From the assays performed to examine the ability of PlyPI23 to degrade HA *P. larvae* spores with and without germinants, no  $OD_{580}$  variation ( $p > 0.05$ ) was observed during the experiment period (7 h) when compared to the control samples, where the endolysin was not present. The same was observed on samples where the endolysin was added 2 h after inducing germination. It was confirmed through  $OD_{580}$  variation that the germinants were able to induce spore germination (data not shown).

Microscopic observations enabled to verify differences on spore staining, between the sample collected at the time point 0 min and all the other samples (where only spores were observed, and predominantly red-pink).



**Fig 5. Variation in the larvae C-length and weight with PlyPI23 ingestion.** Data presented refers to the increase of C-length (a) and larvae weight (b) between the 2<sup>nd</sup> and the 5<sup>th</sup> day. Comparison between the test group, that received diet supplemented with 2.0  $\mu$ M PlyPI23 and the control group, receiving diet with buffer Tris pH = 8.0. Each column represents the mean of 13 larvae and error bars indicate the standard deviation (10%).

doi:10.1371/journal.pone.0132095.g005

**Toxicity tests in artificially reared larvae.** *In vivo* assays were performed to assess the potential toxic effect of the endolysin to bee larvae. The results demonstrated that larvae development was not affected by adding PlyPI23, as the C-length and weight of the larvae that were fed with diet supplemented with the enzyme, 7.1 cm and 185.2 mg respectively, did not differ from the control group ( $p > 0.05$ ), in average 6.9 cm and 180.6 mg, respectively (Fig 5). The estimation of the variability within the sample (measured by the standard deviation) was 10%.

## Discussion

*Paenibacillus larvae* spore germination and subsequent colonization of the young larval midgut (first- or second-instar larvae, occurring within about 48 h after egg hatching) is one of the key steps in the pathogenesis of these bacteria and consequently the critical factor to the onset of AFB [29]. To date, six *P. larvae* phage genomes were analyzed and compared [30]. From these phages, phiIBB\_P123 is the only siphovirus and presents the lower genome size, being thus, the most distantly related genome from the other five myoviruses. Moreover, only in phiIBB\_P123 was possible to identify a putative lysin.

In this study, the *in vitro* potential of the endolysin PlyPI23 to control the vegetative form of the Gram-positive bacterium *P. larvae* was assessed. This enzyme has an identifiable catalytic domain at the N-terminus, an *N*-acetylmuramoyl-*L*-alanine amidase. It was not possible to identify *in silico* any domain in the C-terminus of the enzyme peptide sequence. Since the endolysin is from a Gram-positive background, the existence of a novel CBD can be hypothesized. In order to evaluate the endolysin spectrum of activity, several field strains were isolated and identified as *P. larvae* subsp. *Larvae*, based on its 16S rRNA [11] and rep-PCR [8]. While the phage phiIBB\_P123 showed to be active against 80% of the strains, PlyPI23 lysed 100% of the isolated strains. Both are active against the most relevant genotypes ERIC I (more prevalent in Europe) and ERIC II (only identified in Europe), as ERIC III and IV have not been isolated for many years [4]. Other endolysins demonstrating broader lytic spectra when compared with the host range of the respective phage were already reported [31]. The high lytic efficiency is also supported by the hypothesis that amidases generally display a broader spectrum of

antibacterial activity than the other classes of endolysins due to the very frequent occurrence of the amide bond between *N*-acetylmuramic acid and *L*-alanine in peptidoglycan [32]. Nevertheless, PlyPI23 was not active against the other tested species of *Bacillus* and *Lactobacillus*. This supports the potential broad application of a PlyPI23-based product specifically against AFB. For *in vivo* application purposes, the most feasible way of administering an enzyme-based product to control AFB is by oral administration to adult bees or by spraying directly to bee larvae. Thus, besides exploring the best activity conditions for PlyPI23, the performance of the enzyme in conditions envisaging the practical application were also tested. Accordingly, the activity tests were performed at 37°C (which is similar to the hive temperature, about 34–35°C) and particular attention was given to pH 5.0 to 7.0, which includes the pH of the bee larvae intestine, pH 6.8, and adult bees pH 5.6 to 6.3 [22]. Furthermore, the effect of HL, sucrose and RJ on PlyPI23 activity was also tested. These are the media that better simulate a potential *in vivo* application. The contact of PlyPI23 with sucrose intended to simulate the incorporation of the enzyme in food, since sucrose is used routinely as an artificial source of sugar for bees [33]. The tolerance of PlyPI23 to RJ (a nutritive and antimicrobial substance secreted by nurse bee hypopharyngeal gland) was assessed, since the spray administration would promote the contact between both substances previous to injection by the larvae. In fact, bee larvae float on RJ since egg hatching, using it as food source until the early larval stage (up to 2.5 to 3 day old) [20, 34]. Finally, HL was used to simulate the gastrointestinal conditions of the larvae, where the enzyme will have its major antimicrobial activity.

The *in vitro* evaluation of the enzyme activity showed very promising results. In fact, it was found that the enzyme displayed high antimicrobial activity at pH 5.0 to 9.0, which includes the pH values of interest (5.0 to 7.0). Furthermore, PlyPI23 remained active in HL, after contact with 25% and 50% sucrose. In addition, and interestingly, PlyPI23 activity was enhanced after contact with RJ.

The reason of the synergistic effect is unknown, however, the broad-spectrum distribution of substances in RJ [35] might suggest that some of them can be acting as cofactors. Besides, RJ might sensitize the bacteria cell wall, allowing the easier and faster action of the endolysin. In fact, RJ alone has antimicrobial effect, which was already shown by other authors [36, 37]. However, the antimicrobial activity of RJ is significantly slower than its combination with PlyPI23.

Subsequent tests assessed the *in vitro* antimicrobial capacity of PlyPI23. It was demonstrated that 0.2  $\mu\text{M}$  PlyPI23 (in Tris pH 7.0 (20 mM), supplemented with 200 mM NaCl) was able to decrease a population of  $10^4$  CFU.mL<sup>-1</sup> of *P. larvae* to non-detectable levels (< 10 colonies). Higher bacterial concentrations ( $10^5$  CFU.mL<sup>-1</sup> and  $10^6$  CFU.mL<sup>-1</sup>) of *P. larvae* exposed to the same enzyme concentration were consistently reduced by approximately 4-log units. Based on previous reports of exposure bioassays in artificially reared honey bee larvae [28], it can be inferred that a concentration of  $5 \times 10^3$  CFU.mL<sup>-1</sup> viable *P. larvae* cells are enough to cause the death of about 70% of the infected larvae. Consequently, the results obtained showed that PlyPI23 is highly efficient in controlling bacterial loads of *P. larvae* commonly found in infected hives.

Besides the already discussed enzyme features, studies aiming to assess the ability of the enzyme to induce resistance revealed that after ten cycles of exposure to sub-inhibitory concentrations (MIC<sub>50</sub>), the bacteria remained susceptible to the enzyme. These results indicated that *P. larvae* was not able to acquire resistance to PlyPI23. Similar results were reported for other endolysins of Gram-positive background [21, 38]. This emphasizes the value of a potential product when aiming an *in vivo* application.

The enzyme is very stable when stored at -20°C (similar results for other proteins were already reported by (Turck and Bierbaum [39]) still stable at 4°C, but it loses activity at RT.

Nevertheless, the activity was preserved when the endolysin was lyophilized indicating that storage of a PlyPI23-based product may be feasible, turning it in an economically viable product.

The results have shown that the *P. larvae* spores were not sensitive to PlyPI23. The endolysin was inactive against both dormant and germinating spores (at time 0h and 2h after induction). This suggests that the increased porosity of the spore proteinaceous coat naturally occurring on germinating spores does not enable the access of PlyPI23 to the peptidoglycan in contrast to what was already reported with an endolysin against germinating *Bacillus cereus* spores [21]. The insensitivity of the germinating spores at an early stage of germination reveals that the endolysin might act inside the larvae gut, which naturally induces spore germination, but only after germination is complete.

Furthermore, the enzyme administration to artificially raised larvae did not impair the normal growth and weight gain of young larvae, indicating that it is not toxic for the larvae.

The present work describes, to our knowledge, the first characterization of an endolysin from a *P. larvae* phage. Overall, the results obtained highlight the high potential of this protein in controlling *P. larvae* concentrations commonly found inside honeybee larvae in field conditions. Furthermore, there were no activity losses in conditions that mimic the hive environment where the endolysin must be administered and active. This encourages further *in vivo* experiments and reveals the high potential of PlyPI23 to integrate a commercial product to control the problematic AFB.

## Supporting Information

### **S1 Fig. SDS-PAGE gel loaded with different fractions resulting from PlyPI23 purification.**

M- Protein marker; 1-Flow through; 2- wash with 20 mM imidazole; 3, 4, 5 – sequentially eluted fractions in 300 mM imidazole.

(TIF)

### **S2 Fig. Evaluation of the stability of PlyPI23, after storage at different temperatures.** Activity was tested after storage at 4°C, RT (room temperature) and -20°C for 22 weeks.

(TIF)

## Author Contributions

Conceived and designed the experiments: AO LDK SBS LDRM JA. Performed the experiments: AO ML LDK SBS. Analyzed the data: AO ML LDK SBS LDRM JA. Contributed reagents/materials/analysis tools: AO LDK SBS LDRM JA. Wrote the paper: AO LDK SBS LDRM JA.

## References

1. Fischetti VA. Bacteriophage lysins as effective antibacterials. *Curr Opin Microbiol.* 2008; 11: 393–400. doi: [10.1016/j.mib.2008.09.012](https://doi.org/10.1016/j.mib.2008.09.012) PMID: [18824123](https://pubmed.ncbi.nlm.nih.gov/18824123/)
2. Oliveira H, Melo LD, Santos SB, Nobrega FL, Ferreira EC, Cerca N, et al. Molecular aspects and comparative genomics of bacteriophage endolysins. *J Virol.* 2013; 87: 4558–70. doi: [10.1128/JVI.03277-12](https://doi.org/10.1128/JVI.03277-12) PMID: [23408602](https://pubmed.ncbi.nlm.nih.gov/23408602/)
3. Fischetti VA, Nelson D, Schuch R. Reinventing phage therapy: are the parts greater than the sum? *Nat Biotechnol.* 2006; 24: 1508–1511. PMID: [17160051](https://pubmed.ncbi.nlm.nih.gov/17160051/)
4. Genersch E. American Foulbrood in honeybees and its causative agent, *Paenibacillus larvae*. *J Invertebr Pathol.* 2010; 103: S10–S19. doi: [10.1016/j.jip.2009.06.015](https://doi.org/10.1016/j.jip.2009.06.015) PMID: [19909971](https://pubmed.ncbi.nlm.nih.gov/19909971/)
5. Hansen H, Brodsgaard CJ. American foulbrood: a review of its biology, diagnosis and control. *Bee World.* 1999; 80: 5–23.
6. Kochansky J, Knox DA, Feldlaufer MF, Pettis JS. Screening alternative antibiotics against and-resistant *Paenibacillus larvae*. *Apidologie.* 2001; 32: 215–222.

7. Oliveira A, Melo LDR, Kropinski AM, Azeredo J. Complete genome sequence of the broad-host-range *Paenibacillus larvae* phage phiBB\_P123. *Genome Announc.* 2013; 1:e00438–13. doi: [10.1128/genomeA.00438-13](https://doi.org/10.1128/genomeA.00438-13) PMID: [24009112](https://pubmed.ncbi.nlm.nih.gov/24009112/)
8. Genersch E, Otten C. The use of repetitive element PCR fingerprinting (rep-PCR) for genetic subtyping of German field isolates of *Paenibacillus larvae* subsp. *larvae*. *Apidologie.* 2003; 34: 195–206.
9. Titera D, Haklová M. Detection method of *Paenibacillus larvae* from beehive winter debris. *Apiacta.* 2003; 38: 131–133.
10. De Graaf DC, Alippi AM, Antúnez K, Aronstein KA, Budge G, De Koker D, et al. Standard methods for American foulbrood research. *J Apic Res.* 2013; 52: 1–28.
11. Dobbelaere W, de Graaf D, Peeters J, Jacobs F Development of a fast and reliable diagnostic method for American foulbrood disease (*Paenibacillus larvae* subsp. *larvae*) using a 16S rRNA gene based PCR. *Apidologie.* 2001; 32: 363–370.
12. Altschul SF, Gish W, Miller W, Myers EW, Lipman DJ. Basic local alignment search tool. *J Mol Biol.* 1990, 215: 403–410. PMID: [2231712](https://pubmed.ncbi.nlm.nih.gov/2231712/)
13. Finn RD, Bateman A, Clements J, Coggill P, Eberhardt RY, Eddy SR, et al. Pfam: The protein families database. *Nucleic Acids Res.* 2014; 42: D222–D230. doi: [10.1093/nar/gkt1223](https://doi.org/10.1093/nar/gkt1223) PMID: [24288371](https://pubmed.ncbi.nlm.nih.gov/24288371/)
14. Hildebrand A, Remmert M, Biegert A, Söding J. Fast and accurate automatic structure prediction with HHpred. *Proteins Struct Funct Bioinforma.* 2009; 77: 128–132.
15. Söding J, Biegert A, Lupas AN. The HHpred interactive server for protein homology detection and structure prediction. *Nucleic Acids Res.* 2005; 33:W244–248. PMID: [15980461](https://pubmed.ncbi.nlm.nih.gov/15980461/)
16. Petersen TN, Brunak S, von Heijne G, Nielsen H. SignalP 4.0: discriminating signal peptides from transmembrane regions. *Nat Methods.* 2011; 8: 785–786. doi: [10.1038/nmeth.1701](https://doi.org/10.1038/nmeth.1701) PMID: [21959131](https://pubmed.ncbi.nlm.nih.gov/21959131/)
17. Marchler-Bauer A, Zheng C, Chitsaz F, Derbyshire MK, Geer LY, Geer RC, et al., CDD: conserved domains and protein three-dimensional structure., *Nucleic Acids Res.* 2013; 41:D384–52.
18. Iliasov RA, Gaifullina LR, Saltykova ES, Poskriakov A V, Nikolenko AG. Defensins in the honeybee antinfectious protection. *J Evol Biochem Physiol.* 2012; 48: 425–432.
19. Walmagh M, Briers Y, dos Santos SB, Azeredo J, Lavigne R. Characterization of modular bacteriophage endolysins from *Myoviridae* phages OBP, 201phi2-1 and PVP-SE1. *Plos One.* 2012; 7: e36991. doi: [10.1371/journal.pone.0036991](https://doi.org/10.1371/journal.pone.0036991) PMID: [22615864](https://pubmed.ncbi.nlm.nih.gov/22615864/)
20. Kaftanoglu O, Linksvayer T, Page RE. Rearing honey bees, *Apis mellifera*, *in vitro* 1: effects of sugar concentrations on survival and development. *J Insect Sci.* 2011; 11: 96. doi: [10.1673/031.011.9601](https://doi.org/10.1673/031.011.9601) PMID: [22208776](https://pubmed.ncbi.nlm.nih.gov/22208776/)
21. Schuch R, Nelson D, Fischetti VA. A bacteriolytic agent that detects and kills *Bacillus anthracis*. *Nature.* 2002; 418: 884–9. PMID: [12192412](https://pubmed.ncbi.nlm.nih.gov/12192412/)
22. Alvarado I, Phui A, Elekonich MM, Abel-Santos E. Requirements for *in vitro* germination of *Paenibacillus larvae* spores. *J Bacteriol.* 2013; 195: 1005–1011. doi: [10.1128/JB.01958-12](https://doi.org/10.1128/JB.01958-12) PMID: [23264573](https://pubmed.ncbi.nlm.nih.gov/23264573/)
23. Sacks LE, Alderton G. Behavior of bacterial spores in aqueous polymer two-phase systems. *J Bacteriol.* 1961; 82: 331–41. PMID: [13745253](https://pubmed.ncbi.nlm.nih.gov/13745253/)
24. Schaeffer AB, Fulton MD. A simplified method of staining endospores. *Science.* 1933; 77: 194. PMID: [17741261](https://pubmed.ncbi.nlm.nih.gov/17741261/)
25. Aupinel P, Fortini D, Dufour H, Tasei JN, Michaud B, Odoux J-F et al. Improvement of artificial feeding in a standard *in vitro* method for rearing *Apis mellifera* larvae. *Bull Insectology.* 2005; 58: 107–111.
26. Pujirahayu N, Ritonga H, Uslinawaty Z. Properties and flavonoids content in propolis of some extraction method of raw propolis. *Int J Pharm Pharm Sci.* 2014; 6:338–340.
27. Beynen AC, Festing MFW, van Montford MAJ. Design of animal experiments. In: van Zutphen LFM, Baumans V, Beynen AC, editors. *Principles of Laboratory Animal Science.* Amsterdam: Elsevier; 2003. pp. 219–250.
28. Forsgren E, Olofsson TC, Vásquez A, Fries I. Novel lactic acid bacteria inhibiting *Paenibacillus larvae* in honey bee larvae. *Apidologie.* 2009; 41: 99–108.
29. Yue D, Nordhoff M, Wieler LH, Genersch E. Fluorescence in situ hybridization (FISH) analysis of the interactions between honeybee larvae and *Paenibacillus larvae*, the causative agent of American foulbrood of honeybees (*Apis mellifera*). *Environ Microbiol.* 2008; 10: 1612–1620. doi: [10.1111/j.1462-2920.2008.01579.x](https://doi.org/10.1111/j.1462-2920.2008.01579.x) PMID: [18331334](https://pubmed.ncbi.nlm.nih.gov/18331334/)
30. Merrill BD, Grose J, Breakwell D, Burnett S. Characterization of *Paenibacillus larvae* bacteriophages and their genomic relationships to firmicute bacteriophages. *BMC Genomics.* 2014; 15: 745. doi: [10.1186/1471-2164-15-745](https://doi.org/10.1186/1471-2164-15-745) PMID: [25174730](https://pubmed.ncbi.nlm.nih.gov/25174730/)
31. Schmelcher M, Donovan DM, Loessner MJ. Bacteriophage endolysins as novel antimicrobials. *Future Microbiol.* 2012; 7: 1147–1171. doi: [10.2217/fmb.12.97](https://doi.org/10.2217/fmb.12.97) PMID: [23030422](https://pubmed.ncbi.nlm.nih.gov/23030422/)

32. Gerova M, Halgasova N, Ugorcakova J, Bukovska G. Endolysin of bacteriophage BFK20: Evidence of a catalytic and a cell wall binding domain. *FEMS Microbiol Lett.* 2011; 321: 83–91. doi: [10.1111/j.1574-6968.2011.02312.x](https://doi.org/10.1111/j.1574-6968.2011.02312.x) PMID: [21592196](https://pubmed.ncbi.nlm.nih.gov/21592196/)
33. Waller GD. Evaluating responses of honey bees to sugar solutions using an artificial-flower feeder. *Ann Entomol Soc Am.* 1972; 65: 857–862.
34. Brouwers EVM, Ebert R, Beetsma J. Behavioral and physiological aspects of nurse bees in relation to the composition of larval food during caste differentiation in the honey bee. *J Apic Res.* 1987; 26: 11–23.
35. Bogdanov S. Royal jelly, bee brood: composition, health, medicine: a review. *Bee Product Science.* 2014; 1–35. Available: [www.bee-hexagon.net](http://www.bee-hexagon.net).
36. Viuda-Martos M, Ruiz-Navajas Y, Fernandez-Lopez J, Perez-Alvarez JA. Functional properties of honey, propolis, and royal jelly. *J Food Sci.* 2008; 73: R117–24. doi: [10.1111/j.1750-3841.2008.00966.x](https://doi.org/10.1111/j.1750-3841.2008.00966.x) PMID: [19021816](https://pubmed.ncbi.nlm.nih.gov/19021816/)
37. Bilikova K, Wu G, Simúth J. Isolation of a peptide fraction from honeybee royal jelly as a potential anti-foulbrood factor. *Apidologie.* 2001; 32: 275–83.
38. Fischetti VA. Bacteriophage lytic enzymes: novel anti-infectives. *Trends Microbiol.* 2005; 13: 491–6. PMID: [16125935](https://pubmed.ncbi.nlm.nih.gov/16125935/)
39. Turck M, Bierbaum G. Purification and activity testing of the full-length YycFGHI proteins of *Staphylococcus aureus*. *Plos One.* 2012; 7: e30403. doi: [10.1371/journal.pone.0030403](https://doi.org/10.1371/journal.pone.0030403) PMID: [22276191](https://pubmed.ncbi.nlm.nih.gov/22276191/)