

# Activation of transcription factors NF-kappaB and AP-1 and their relations with apoptosis-associated proteins in hepatocellular carcinoma

Lin-Lang Guo, Sha Xiao, Ying Guo

Lin-Lang Guo, Sha Xiao, Ying Guo, Department of Pathology, Zhujiang Hospital, Guangzhou 210282, Guangdong Province, China  
Lin-Lang Guo, University of California, Davis Cancer Center, CA 95817, the United States  
Correspondence to: Lin-Lang Guo, MD, University of California, Davis Cancer Center, Suite 2300, Research Building III, 4645 Second Avenue, Sacramento, CA 95817, United States. linlangg@yahoo.com  
Telephone: +916-734-1479 Fax: +916-734-2361  
Received: 2004-08-18 Accepted: 2004-11-29

## Abstract

**AIM:** To study the distribution pattern of transcription factors NF- $\kappa$ B and AP-1 and their relations with the expression of apoptosis associated-proteins Fas/FasL and ICH-1L/S in human hepatocellular carcinoma (HCC).

**METHODS:** We performed *in situ* hybridization and immunohistochemical techniques for NF- $\kappa$ B, AP-1, Fas/FasL and ICH-1 in 40 cases of human HCC along with corresponding nontumoral tissues and 7 cases of normal liver tissues.

**RESULTS:** Twenty-two (55%) and 25 (62.5%) of 40 cases for NF- $\kappa$ B and AP-1 were presented for nuclear or both nuclear and cytoplasmic staining respectively, while less cases were presented for only cytoplasmic staining for NF- $\kappa$ B (18%) and AP-1 (10%) in adjacent nontumoral tissues and negative staining in normal liver tissues. There was no statistically significant difference of NF- $\kappa$ B or AP-1 activation between well differentiated tumors and poorly differentiated tumors ( $P > 0.05$ ). NF- $\kappa$ B activity is positively corresponded to AP-1 activation. The expression of ICH-1L/S was associated with the activation of NF- $\kappa$ B and AP-1 ( $P < 0.05$ ), but no significant relationship was found between Fas/FasL and NF- $\kappa$ B or AP-1 ( $P > 0.05$ ).

**CONCLUSION:** Activation of both NF- $\kappa$ B and AP-1 may be required for ICH-1L/S-induced apoptosis in HCC, but not for Fas/FasL-mediated apoptosis. NF- $\kappa$ B and AP-1 may play important roles in the pathogenesis of human HCC.

© 2005 The WJG Press and Elsevier Inc. All rights reserved.

**Key words:** Hepatocellular carcinoma (HCC); Transcription factors; Apoptosis; Protein

Guo LL, Xiao S, Guo Y. Activation of transcription factors

NF-kappaB and AP-1 and their relations with apoptosis-associated proteins in hepatocellular carcinoma. *World J Gastroenterol* 2005; 11(25): 3860-3865  
<http://www.wjgnet.com/1007-9327/11/3860.asp>

## INTRODUCTION

Hepatocellular carcinoma (HCC) is one of the most common cancers and cause of mortality in China. Much advanced progresses in the mechanism of hepatocarcinogenesis have been achieved for these years. Many genes such as proto-oncogenes, tumor suppressor genes, apoptosis genes and growth factors genes have been implicated and apoptosis genes may play an important effect in the process of hepatocarcinogenesis<sup>[1-6]</sup>. Apoptosis-related genes such as bcl-2/bax, Fas/FasL and caspase are involved in the pathogenesis of HCC<sup>[3-6]</sup>. However, more steps of apoptosis genes in this process remain unknown yet.

Activated protein-1 (AP-1) and nuclear factor  $\kappa$ B (NF- $\kappa$ B), two of important transcription factors, play important roles in signal transduction pathways of cell differentiation, proliferation and apoptosis in response to a variety of physiological and pathological stimuli<sup>[7-13]</sup>. AP-1 consists of homodimers and heterodimers of the Jun family (c-Jun, JunB, JunD), and the Fos family (c-Fos, FosB, Fra1, Fra2). NF- $\kappa$ B is a heterodimeric complex composed of two subunits of the Rel/NF- $\kappa$ B family, factors including NF- $\kappa$ B1 (p50), NF- $\kappa$ B2 (p52), c-Rel, RelA/p65, and RelB<sup>[14]</sup>. Some investigators have presented aberrant DNA binding activity of AP-1 and NF- $\kappa$ B in various types of human tumor such as HCC, gastric carcinoma, breast carcinoma and so on<sup>[15-22]</sup>. These findings suggested that AP-1 and NF- $\kappa$ B may be important in the control of cell proliferation and oncogenesis of these tumors.

The molecular mechanisms of NF- $\kappa$ B and AP-1 in the regulation of Fas/FasL mediated apoptosis may be different in T cells, Jurkat cells, hepatocyte-derived cell lines and colon carcinoma cell<sup>[23-27]</sup>. However, whether NF- $\kappa$ B and AP-1 play important roles in regulation of Fas/FasL and ICH-1L/S expression in human HCC is still not known. In the present study, we undertook to investigate whether AP-1 and NF- $\kappa$ B are constitutively activated in human HCC tissues and to evaluate the relationship between AP-1 or NF- $\kappa$ B activity and the expression of apoptosis associated proteins (Fas/FasL and ICH-1L/S) by *in situ* hybridization and immunohistochemical techniques.

## MATERIALS AND METHODS

### Tissue preparation

Forty samples were obtained by surgical resection in our department. All samples were independently reviewed by two pathologists. The cases of HCC were classified according to the criteria described by Edmondson-Steiner and grouped as well differentiated (grade I-II;  $n = 25$ ) or poorly differentiated (grade III-IV;  $n = 15$ ). Seven undamaged liver tissues from surgical resection specimens of young adults with minor liver injury who underwent partial hepatectomy were used as normal control. All tissues were fixed in 40 g/L formaldehyde (pH 7.0) for 12-24 h and embedded in paraffin wax and then 4  $\mu$ m serial sections were cut and mounted on poly-L-lysine coated slides.

### Immunohistochemistry staining

Sections were deparaffinized and rehydrated routinely. Antigen was retrieved by heating sections in a microwave oven at 700 W in 10 mmol/L citrate buffer (pH 6.0) for 10 min. After blocking with 0.3% H<sub>2</sub>O<sub>2</sub> and swine serum, specimens were then incubated with the primary antibodies, directed against Fas, FasL, and ICH-1L/S (Santa Cruz product, dilution 1:100) at 4 °C overnight. Secondary antibodies were applied according to the manufacturer's recommendations (Amersham). The staining was performed by streptavidin-peroxidase enzyme conjugate method using a S-P kit (Zymed product). Reaction products were visualized by DAB (diaminobenzidine). The slides were counterstained with hematoxylin before mounting in paramount. Brown-yellow granules in cytoplasm were recognized as positive staining.

### In situ hybridization

Sections were deparaffinized and rehydrated routinely. Oligonucleotides containing the consensus sequence of

AP-1 (5'-CGCTTGATGAGTCAGCCGGAA-3') and NF- $\kappa$ B (5'-AGTTGAGGGGACTTCCAGGC-3') were respectively used as probes and 3'-labeled with biotin. Preparations were incubated with the labeled probes (37 °C, overnight). Non-specific antigen was blocked with 2% bovine serum and 0.3% Triton X-100, followed by incubation with anti-biotin antibody alkaline phosphates mixture for 1 h. Slides were then visualized with BCIP/NBT. Purple-blue granules were regarded as positive staining. In general, inactivated NF- $\kappa$ B and AP-1 were located in cytoplasm and nuclei staining scored as activated NF- $\kappa$ B and AP-1.

### Negative controls

We used the following negative controls: (a) absence of probes, (b) mutant AP-1 or NF- $\kappa$ B probes 5'-CGCTTGAT-AAATCAGCCGGAA-3', and 5'-AGTTGAGGCTC-CTTCCAGGC-3', respectively, labeled with biotin, (c) competition assays with a 100-fold excess of unlabeled AP-1 or NF- $\kappa$ B probes, followed by incubation with its respective labeled probe.

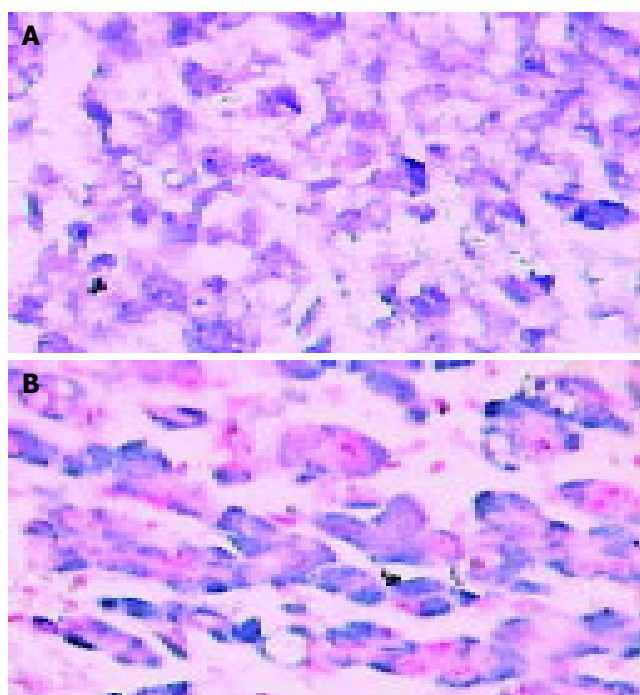
### Statistical analysis

Statistical significance was calculated by  $\chi^2$  test. The  $\chi^2$  test was used to analyze the association between NF- $\kappa$ B/AP-1 and histopathological grades and Fas/FasL and ICH-1L/S.  $P < 0.05$  was regarded as significant difference.

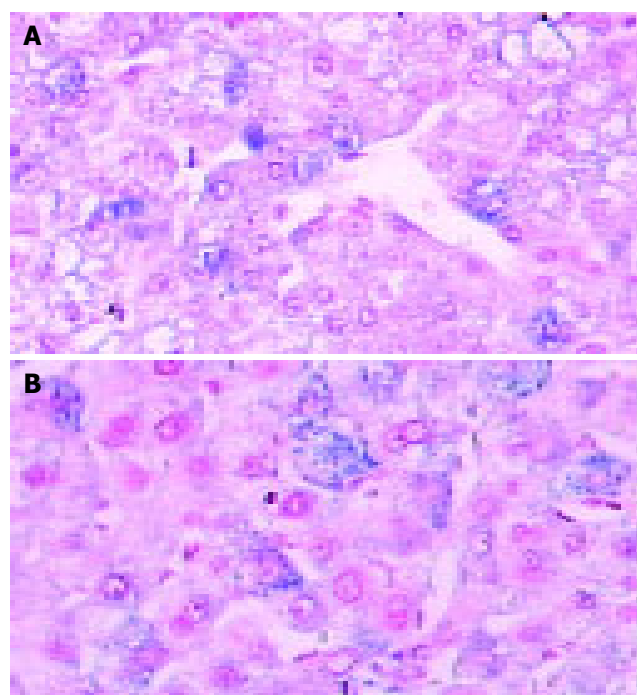
## RESULTS

### Detection of NF- $\kappa$ B and AP-1 in HCC

*In situ* hybridization was performed to detect the activity status of NF- $\kappa$ B and AP-1 in all 40 HCCs. NF- $\kappa$ B and AP-1 distribution in nuclear or both nuclear and cytoplasm of cancer cells are illustrated in Figures 1 and 2. Of 40



**Figure 1** Hepatocellular carcinoma showing nuclear and cytoplasmic positivity for NF- $\kappa$ B (A) and AP-1 (B). *In situ* hybridization (magnification  $\times 200$ ).



**Figure 2** Nontumor liver tissue showing focal and weak cytoplasmic positivity for NF- $\kappa$ B (A) and AP-1 (B). *In situ* hybridization (magnification  $\times 200$ ).

HCCs, 22 (55%) presented nuclear or both nuclear and cytoplasmic staining of NF- $\kappa$ B by *in situ* hybridization in which 13/25 (52%) were well differentiated tumors and 9/15 (60%) were poorly differentiated tumors. While 25 (62.5%) of 40 cases for AP-1 positive staining were shown in which 14/25 (56%) were well differentiated tumors and 10/15 (66.7%) were poorly differentiated tumors. There was no statistically significant difference of NF- $\kappa$ B or AP-1 activation between well differentiated tumors and poorly differentiated tumors ( $P>0.05$ ). In adjacent non-tumor tissues, cytoplasmic staining of NF- $\kappa$ B or AP-1 was noted in 27(68%) and 23(58%) respectively. But lower nuclear staining for NF- $\kappa$ B (17.5%) and AP-1 (10%) was found in non-tumor tissues than those in HCC with a statistical significance ( $P<0.05$ ). Only few hepatocytes showed cytoplasmic staining for NF- $\kappa$ B (1/7) and AP-1 (2/7) in normal liver tissues, but no staining in the nucleus. NF- $\kappa$ B activity positively corresponded to AP-1 activation (Table 1).

**Table 1** Detection of NF- $\kappa$ B and AP-1 in HCC

Group	Cases	NF- $\kappa$ B nucleus/cytoplasm + nucleus (+) (%)	AP-1 nucleus/cytoplasm + nucleus (+) (%)
Tumor tissue	40	22 (55) <sup>a</sup>	24 (60)
Well differentiated	25	13 (52)	14 (56)
Poorly differentiated	15	9 (60)	10 (66.7)
Nontumor tissue	40	7 (17.5)	4 (10)
Normal tissue	7	0	0

<sup>a</sup> $P<0.05$  vs tumor tissue.

### Expression of apoptosis proteins in HCC

Table 2 summarizes the results of immunohistochemical studies on apoptosis proteins including Fas, FasL, ICH-1L and ICH-1S. Fas, FasL, ICH-1L, and ICH-1S presented cytoplasmic reactivity in 7 (17.5%), 6 (15%), 15 (37.5%) and 21 (52.5%) of tumors, while in 21 (52.5%), 18 (45%),

29 (72.5%) and 31 (77.5%) of nontumor tissues, in 0%, 0%, 2/7 and 1/7 of normal liver tissues, respectively. There were statistically significant differences of the expression of Fas, FasL, ICH-1L, and ICH-1S between non-tumor tissues and tumor tissues ( $P<0.05$ ). The differences of Fas and ICH-1S expression except FasL and ICH-1L were also statistically significant between nontumor tissues and normal liver tissues ( $P<0.05$ , Figure 3).

**Table 2** Expression of Fas, FasL, ICH-1L, and ICH-1S in HCC

Group	Cases	Fas (%)	FasL (%)	ICH-1L (%)	ICH-1S (%)
Tumor tissue	40	7 (17.5) <sup>a</sup>	6 (15)	15 (37.5)	21 (52.5)
Nontumor tissue	40	21 (52.5) <sup>1</sup>	18 (45) <sup>2</sup>	29 (72.5) <sup>3</sup>	31 (77.5) <sup>4</sup>
Normal tissue	7	0 <sup>5</sup>	0 <sup>6</sup>	2	1 <sup>6</sup>

<sup>a</sup> $P<0.05$  vs tumor tissue. <sup>1</sup> $\chi^2 = 10.2692$ , <sup>2</sup> $\chi^2 = 8.5714$ , <sup>3</sup> $\chi^2 = 9.8990$ , <sup>4</sup> $\chi^2 = 5.4945$ , <sup>5</sup> $\chi^2 = 4.6890$ , <sup>6</sup> $\chi^2 = 8.2398$ .

### Relationship between activated NF- $\kappa$ B and apoptosis proteins in HCC

The expression of Fas and FasL was more frequent in 22 cases of HCC with activated NF- $\kappa$ B compared with 18 cases of HCC with inactivated NF- $\kappa$ B, but the differences were not significant statistically between cases with activated NF- $\kappa$ B group and with inactivated NF- $\kappa$ B group ( $P>0.05$ ). However, there was positive relationship between the expression of ICH-1L and ICH-1S in the cases with activated NF- $\kappa$ B and those with inactivated NF- $\kappa$ B ( $P<0.05$ , Table 3).

### Relationship between activated AP-1 and apoptosis proteins in HCC

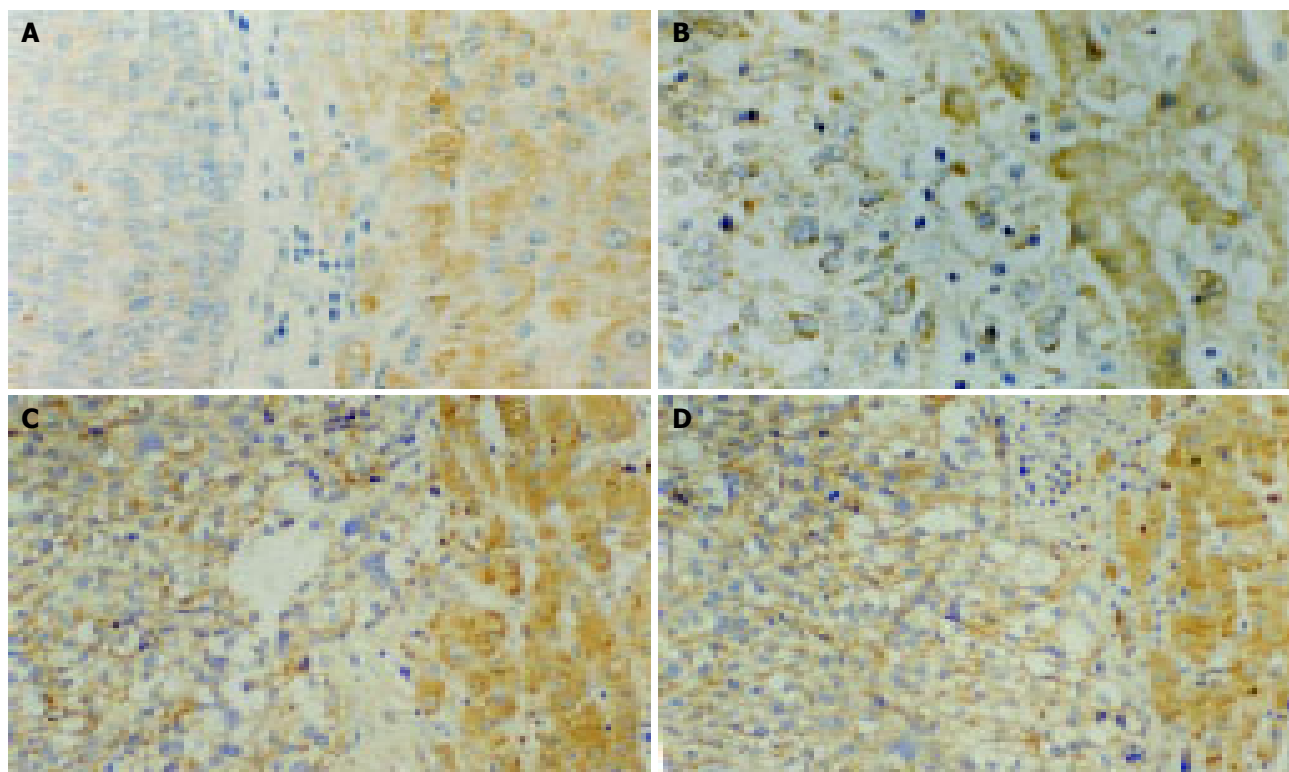
The expression of ICH-1L and ICH-1S in HCC with activated AP-1 was also more common with a statistical significance as compared with those with inactivated AP-1 respectively ( $P<0.05$ ). But there was no significant difference between the expression of Fas and FasL in the cases with activated AP-1 and those with inactivated AP-1 ( $P>0.05$ , Table 4).

**Table 3** Relationship between activated NF- $\kappa$ B and apoptosis proteins in HCC

NF- $\kappa$ B	Cases	Apoptosis protein							
		Fas		FasL		ICH-1L		ICH-1S	
		+	-	+	-	+	-	+	-
Activated	22	6	16	5	17	13	12	17	8
Inactivated	18	1	17	1	17	2	13	4	11
$\chi^2$		1.9048		1.4495		4.4444		4.8722	
$P$		$>0.05$		$>0.05$		$<0.05$		$<0.05$	

**Table 4** Relationship between activated AP-1 and apoptosis proteins in HCC

AP-1	Cases	Apoptosis protein							
		Fas		Fas L		ICH-1L		ICH-1S	
		+	-	+	-	+	-	+	-
Activated	25	7	18	6	19	13	12	16	9
Inactivated	15	0	15	0	15	2	13	3	12
$\chi^2$		3.3362		2.5621		4.4444		5.6207	
$P$		$>0.05$		$>0.05$		$<0.05$		$<0.025$	



**Figure 3** Immunohistochemistry staining showing strong cytoplasmic positivity in adjacent hepatocytes and weak positivity in HCC for Fas (A), FasL (B), ICH-

IL (C) and ICH-IS (D) (magnification ×200).

**DISCUSSION**

Electrophoretic mobility shift assays is a common and useful technique for studying transcription factors. However, the distribution of transcription factors either in nucleus or cytoplasm cannot be shown using this technique. *In situ* detection using nonradioactive oligonucleotides in paraffin wax-embedded tissues was successfully used for studying NF-κB and AP-1 activation in kidney and injured vessels<sup>[28]</sup>. In this study, we performed this technique to detect NF-κB and AP-1 in HCC and obtained ideal results. The distribution of NF-κB and AP-1 was presented in nuclear and cytoplasmic types. Positive signals in HCC were mainly located both in nuclei and cytoplasm while cytoplasmic staining mainly in nontumor. We concluded that *in situ* hybridization is a convenient and efficient tool for studying transcription factors (Table 5).

Some studies have shown that DNA binding activity of NF-κB and AP-1 was aberrant in HCC<sup>[15,16]</sup>. Liu *et al.*, measured the DNA binding activity of AP-1 and NF-κB in the peritumoral and the tumoral parts of 15 primary liver cancers. AP-1 and NF-κB binding activities were in 73%

and 87% of the cases in the peritumoral tissue respectively. A further activation of AP-1 and NF-κB binding in the tumoral parts was detected in 40% and 80% of the cases respectively. Early activation of AP-1 and NF-κB contributes probably to the acquisition of a transformed phenotype during hepatocarcinogenesis, whatever the etiology<sup>[15]</sup>. Tai *et al.*, studied the NF-κB-DNA binding activity and its dimmer, active nuclear RelA and nuclear IkappaB-alpha proteins expression in HCC using electrophoretic mobility shift assay and Western blot analysis. The results showed that nuclear NF-κB DNA binding activity and nuclear RelA protein expression were greater in tumor tissue compared with nontumor tissue<sup>[16]</sup>. Constitutive activation of NF-κB was found more frequently in tumor tissue compared with nontumor tissue. In our study, the results are similar to that by electrophoretic mobility shift assay. Furthermore, our findings presented positive staining for NF-κB and AP-1 distribution in cytoplasm (inactive form) at 68% and 58% in adjacent liver tissues, 1/7 and 2/7 in normal liver, and in nuclei (active form) at 55% and 62.5% in tumor tissues. The possible activation of NF-κB has been shown in some

**Table 5** Relationship between activated NF-κB and apoptosis proteins in nontumor tissues

NF-κB	Cases	Adjacent nontumor tissues								Normal liver tissues								
		Fas		FasL		ICH-IL		ICH-IS		Fas		FasL		ICH-IL		ICH-IS		
		+	-	+	-	+	-	+	-	+	-	+	-	+	-	+	-	
Activated	7	15	7	13	9	19	3	21	1	0	0	0	0	0	0	0	0	0
Inactivated	33	6	12	5	13	10	8	10	8	7	0	7	0	7	2	5	1	6
$\chi^2$		4.8211		3.9221		4.7130		6.8946			0		0		0		0	
P		<0.05		<0.05		<0.05		<0.05			>0.05		>0.05		>0.05		>0.05	

carcinoma tissues such as human pancreatic carcinoma, gastric carcinoma and breast carcinoma. NF- $\kappa$ B activation was evaluated on the basis of nuclear translocation from inactive form with NF- $\kappa$ B-I $\kappa$ Bs complex in cytoplasm<sup>[18,20-22]</sup>. However, the mechanism concerning AP-1 activation in carcinoma is not available. We further found that NF- $\kappa$ B activity positively corresponded to AP-1 activation. Taken together, these results demonstrated that NF- $\kappa$ B and AP-1 translocated from cytoplasm (inactive form) to nucleus (active form) during hepatocarcinogenesis and suggested that activation of both NF- $\kappa$ B and AP-1 may be required to produce potential biological function and play important roles in the oncogenesis of human HCC.

Fas/FasL system is involved in apoptosis in human HCC<sup>[5,6]</sup>. In this study, we further investigated whether there is a relationship between NF- $\kappa$ B or AP-1 activity and Fas/FasL expression in HCC. The results showed that more expression of Fas and FasL was found in cases with activated NF- $\kappa$ B or AP-1 than those with inactivated NF- $\kappa$ B or AP-1 in HCC but the differences were not significant statistically ( $P>0.05$ ). These data indicated that NF- $\kappa$ B and AP-1 activation may not be required for Fas/FasL-induced apoptosis in HCC. Similar results have been reported in other different cells. Nagaki *et al.*, found NF- $\kappa$ B blocks hepatocyte apoptosis mediated by the TNF receptor, but not by Fas<sup>[23]</sup>. In T cells, NF- $\kappa$ B signaling pathway is not required for activation-induced FasL expression<sup>[24]</sup>. Lack of a requirement for AP-1 induction in Fas-mediated death was substantiated with Jurkat cell<sup>[25]</sup>. However, the results contrary to those stated above have been implicated in some studies. Marusawae *et al.*, demonstrated that NF- $\kappa$ B activity is related to Fas signaling in hepatocyte-derived cell lines, HepG2 and Huh-7 cells. Overexpression of kinase-inactive NF- $\kappa$ B-inducing kinase (NIK) and IkappaB kinase (IKK) inhibited the activation of NF- $\kappa$ B introduced by anti-Fas treatment in these cells. Inactivation of NF- $\kappa$ B by the production of IkappaB-alpha protein made these cells more susceptible to apoptosis induced by Fas stimulation<sup>[26]</sup>. NF- $\kappa$ B and AP-1 are also found involving in the transcriptional regulation of FasL in Fas-mediated thymineless death of colon carcinoma cell<sup>[27]</sup>. These results suggested NF- $\kappa$ B and AP-1 may play different roles in the regulation of Fas/FasL-mediated apoptosis in different cells.

ICH-1, a gene related to the *C. elegans* cell death gene *ced-3* and the mammalian homolog of *ced-3*, interleukin-1 beta-converting enzyme (ICE). Alternative splicing results in two distinct ICH-1 mRNA species. One mRNA species encodes a protein product of 435 amino acids (ICH-1L) that is homologous to both the P20 and P10 subunits of ICE (27% identity) and the entire CED-3 protein (28% identity). The other mRNA encodes a 312 amino acid truncated version of ICH-1L protein (ICH-1S). Overexpression of ICH-1L induces programmed cell death, while ICH-1S suppresses Rat-1 cell death induced by serum deprivation. ICH-1 plays an important role in both positive and negative regulation of programmed cell death in vertebrate animals<sup>[29]</sup>. In this study, we found that aberrant expression of ICH-1 in HCC and adjacent tissues compared to normal liver. The results also showed that there are statistical differences between expression of ICH-1L or ICH-1S and NF- $\kappa$ B or AP-1

activation. These findings suggested that NF- $\kappa$ B and AP-1 may play a role in mediating ICH-1L/S expression during pathogenesis of HCC.

## REFERENCES

- 1 **Shao J**, Li Y, Li H, Wu Q, Hou J, Liew C. Deletion of chromosomes 9p and 17 associated with abnormal expression of p53, p16/MTS1 and p15/MTS2 gene protein in hepatocellular carcinomas. *Chin Med J* 2000; **113**: 817-822
- 2 **Staib F**, Hussain SP, Hofseth LJ, Wang XW, Harris CC. TP53 and liver carcinogenesis. *Hum Mutat* 2003; **21**: 201-216
- 3 **Yuen MF**, Wu PC, Lai VC, Lau JY, Lai CL. Expression of c-Myc, c-Fos, and c-jun in hepatocellular carcinoma. *Cancer* 2001; **91**: 106-112
- 4 **Ikeguchi M**, Hirooka Y, Kaibara N. Quantitative analysis of apoptosis-related gene expression in hepatocellular carcinoma. *Cancer* 2002; **95**: 1938-1945
- 5 **Lee SH**, Shin MS, Lee HS, Bae JH, Lee HK, Kim HS, Kim SY, Jang JJ, Joo M, Kang YK, Park WS, Park JY, Oh RR, Han SY, Lee JH, Kim SH, Lee JY, Yoo NJ. Expression of Fas and Fas-related molecules in human hepatocellular carcinoma. *Hum Pathol* 2001; **32**: 250-256
- 6 **Roskams T**, Libbrecht L, Van Damme B, Desmet V. Fas and Fas ligand: strong co-expression in human hepatocytes surrounding hepatocellular carcinoma; can cancer induce suicide in peritumoural cells? *J Pathol* 2000; **191**: 150-153
- 7 **Angel P**, Karin M. The role of Jun, Fos, and the AP-1 complex in cell-proliferation and transformation. *Biochim Biophys Acta* 1991; **1072**: 129-157
- 8 **Karin M**, Liu ZG, Zandi E. AP-1 function and regulation. *Curr Opin Cell Biol* 1997; **9**: 240-246
- 9 **Shaulian E**, Karin M. AP-1 in cell proliferation and survival. *Oncogene* 2001; **20**: 2390-2400
- 10 **Beg AA**, Sha WC, Bronson RT, Ghosh S, Baltimore D. Embryonic lethality and liver degeneration in mice lacking the RelA component of NF- $\kappa$ B. *Nature* 1995; **376**: 167-170
- 11 **Van Antwerp DJ**, Martin SJ, Kafri T, Green DR, Verma IM. Suppression of TNF-alpha-induced apoptosis by NF-kappaB. *Science* 1996; **274**: 787-789
- 12 **Bellas RE**, FitzGerald MJ, Fausto N, Sonenshein GE. Inhibition of NF- $\kappa$ B activity induces apoptosis in murine hepatocytes. *Am J Pathol* 1997; **151**: 891-896
- 13 **Beg AA**, Baltimore D. An essential role for NF-kappaB in preventing TNF-alpha-induced cell death. *Science* 1996; **274**: 782-784
- 14 **Siebenlist U**, Franzoso G, Brown K. Structure, regulation and function of NF-kappa B. *Annu Rev Cell Biol* 1994; **10**: 405-455
- 15 **Liu P**, Kimmoun E, Legrand A, Sauvanet A, Degott C, Lardeux B, Bernuau D. Activation of NF-kappaB, AP-1 and STAT transcription factors is a frequent and early event in human hepatocellular carcinomas. *J Hepatol* 2002; **37**: 63-71
- 16 **Tai DI**, Tsai SL, Chang YH, Huang SN, Chen TC, Chang KS, Liaw YF. Constitutive activation of nuclear factor kappaB in hepatocellular carcinoma. *Cancer* 2000; **89**: 2274-2281
- 17 **Fujikawa K**, Shiraki K, Sugimoto K, Ito T, Yamanaka T, Takase K, Nakano T. Reduced expression of ICE/caspase1 and CPP32/caspase3 in human hepatocellular carcinoma. *Anticancer Res* 2000; **20**: 1927-1932
- 18 **Sasaki N**, Morisaki T, Hashizume K, Yao T, Tsuneyoshi M, Noshiro H, Nakamura K, Yamanaka T, Uchiyama A, Tanaka M, Katano M. Nuclear factor-kappaB p65 (RelA) transcription factor is constitutively activated in human gastric carcinoma tissue. *Clin Cancer Res* 2001; **7**: 4136-4142
- 19 **Luque I**, Gelinas C. Rel/NF- $\kappa$ B and I $\kappa$ B factors in oncogenesis. *Semin Cancer Biol* 1997; **8**: 103-111
- 20 **Wang W**, Abbruzzese JL, Evans DB, Larry L, Cleary KR, Chiao PJ. The nuclear factor- $\kappa$ B RelA transcription factor is constitutively activated in human pancreatic adenocarcinoma cells. *Clin Cancer Res* 1999; **5**: 119-127

- 21 **Sovak MA**, Bellas RE, Kim DW, Zanieski GJ, Rogers AE, Traish AM, Sonenshein GE. Aberrant nuclear factor- $\kappa$ B/Rel expression and the pathogenesis of breast cancer. *J Clin Invest* 1997; **100**: 2952-2960
- 22 **Kim DW**, Sovak MA, Zanieski G, Nonet G, Romieu-Mourez R, Lau AW, Hafer LJ, Yaswen P, Stampfer M, Rogers AE, Russo J, Sonenshein GE. Activation of NF- $\kappa$ B/Rel occurs early during neoplastic transformation of mammary cells. *Carcinogenesis* 2000; **21**: 871-879
- 23 **Nagaki M**, Naiki T, Brenner DA, Osawa Y, Imose M, Hayashi H, Banno Y, Nakashima S, Moriwaki H. Tumor necrosis factor alpha prevents tumor necrosis factor receptor-mediated mouse hepatocyte apoptosis, but not fas-mediated apoptosis: role of nuclear factor-kappaB. *Hepatology* 2000; **32**: 1272-1279
- 24 **Rivera-Walsh I**, Cvijic ME, Xiao G, Sun SC. The NF-kappa B signaling pathway is not required for Fas ligand gene induction but mediates protection from activation-induced cell death. *J Biol Chem* 2000; **275**: 25222-25230
- 25 **Lenczowski JM**, Dominguez L, Eder AM, King LB, Zacharchuk CM, Ashwell JD. Lack of a role for Jun kinase and AP-1 in Fas-induced apoptosis. *Mol Cell Biol* 1997; **17**: 170-181
- 26 **Marusawa H**, Hijikata M, Watashi K, Chiba T, Shimotohno K. Regulation of Fas-mediated apoptosis by NF-kappaB activity in human hepatocyte derived cell lines. *Microbiol Immunol* 2001; **45**: 483-489
- 27 **Harwood FG**, Kasibhatla S, Petak I, Vernes R, Green DR, Houghton JA. Regulation of FasL by NF-kappaB and AP-1 in Fas-dependent thymineless death of human colon carcinoma cells. *J Biol Chem* 2000; **275**: 10023-10029
- 28 **Hernandez-Presa MA**, Gomez-Guerrero C, Egido J. *In situ*-nonradioactive detection of nuclear factors in paraffin sections by Southwestern histochemistry. *Kidney Int* 1999; **55**: 209-214
- 29 **Wang L**, Miura M, Bergeron L, Zhu H, Yuan J. Ich-1, an Ice/ced-3-related gene, encodes both positive and negative regulators of programmed cell death. *Cell* 1994; **78**: 739-750

Science Editor Li WZ. Language Editor Elsevier HK