

• BRIEF REPORTS •

Surgical treatment of hepatocellular carcinoma with bile duct tumor thrombi

Bao-Gang Peng, Li-Jian Liang, Shao-Qiang Li, Fan Zhou, Yun-Peng Hua, Shi-Min Luo

Bao-Gang Peng, Li-Jian Liang, Shao-Qiang Li, Fan Zhou, Yun-Peng Hua, Shi-Min Luo, Department of Hepatobiliary Surgery, the First Affiliated Hospital of Sun Yat-Sen University, Guangzhou 510080, Guangdong Province, China

Correspondence to: Dr. Bao-Gang Peng, Department of Hepatobiliary Surgery, the First Affiliated Hospital of Sun Yat-Sen University, Guangzhou 510080, Guangdong Province, China. pengbaogang@163.net

Telephone: +86-20-87755766-8214 Fax: +86-20-87755766-8663

Received: 2004-06-28 Accepted: 2004-07-22

Abstract

AIM: To study the surgical treatment effect and outcome of hepatocellular carcinoma (HCC) with bile duct tumor thrombi (BDTT).

METHODS: Fifty-three consecutive HCC patients with BDTT admitted in our department from July 1984 to December 2002 were reviewed retrospectively. The clinical data, diagnostic methods, surgical procedures and outcome of these patients were collected and analyzed.

RESULTS: One patient rejected surgical treatment, 6 cases underwent percutaneous transhepatic cholangial drainage (PTCD) for unresectable primary disease, and the other 46 cases underwent surgical operation. The postoperative mortality was 17.6%, and the morbidity was 32.6%. Serum total bilirubin levels of these patients with obstructive jaundice decreased gradually after surgery. The survival time of six cases who underwent PTCD ranged from 2 to 7 mo (median survival of 3.7 mo). The survival time of the patients who received surgery was as follows: 2 mo for one patient who underwent laparotomy, 5-46 mo (median survival of 23.5 mo, which was the longest survival in comparison with patients who underwent other procedures, $P = 0.0024$) for 17 cases who underwent hepatectomy, 5-17 mo (median survival of 10.0 mo) for 5 cases who underwent HACE, 3-9 mo (median survival of 6.1 mo) for 11 cases who underwent simple thrombectomy and biliary drainage, and 3-8 mo (median survival of 4.3 mo) for four cases who underwent simple biliary drainage.

CONCLUSION: Jaundice caused by BDTT in HCC patients is not a contraindication for surgery. Only curative resection can result in long-term survival. Early diagnosis and surgical treatment are the key points to prolong the survival of patients.

© 2005 The WJG Press and Elsevier Inc. All rights reserved.

Key words: Hepatocellular carcinoma; Bile duct tumor thrombi

Peng BG, Liang LJ, Li SQ, Zhou F, Hua YP, Luo SM. Surgical treatment of hepatocellular carcinoma with bile duct tumor thrombi. *World J Gastroenterol* 2005; 11(25): 3966-3969 <http://www.wjgnet.com/1007-9327/11/3966.asp>

INTRODUCTION

Jaundice is present in 19-40% of patients with hepatocellular carcinoma (HCC) at the time of diagnosis and usually occurs in advanced stages of diseases. The etiology of jaundice is mainly due to diffuse tumor infiltration of liver parenchyma, progressive liver failure (advanced underlying cirrhosis) and hepatic hilar invasion^[1]. Obstructive jaundice caused by bile duct tumor thrombi (BDTT) arising from HCC is uncommon^[2,3]. Only 1-12% of HCC patients manifest obstructive jaundice as the initial manifestation^[4]. We have noticed this kind of obstructive jaundice caused by HCC with BDTT since 1980, and our initial report of HCC with BDTT was published in 1996^[5]. However, BDTT caused by HCC thrombus is often misdiagnosed as hilar cholangiocarcinoma, and has a particular mode of growth and clinical features. Herein, we report a total of 53 HCC patients with BDTT to make a better understanding of the nature of this disease.

MATERIALS AND METHODS

Patients

From July 1984 to December 2002, 53 consecutive HCC patients (47 males, 6 females, age range 20-69 years, mean age 48.2 ± 10.2 years) with BDTT were treated in our department. The common clinical manifestations included: jaundice, abdominal pain, poor appetite, abdominal distension, skin itch, clay-colored stools, *etc.* Eight cases had previous treatment in other hospitals before admission. Among them, four cases had recurrent HCC after hepatectomy, three received transcatheter arterial chemoembolization (TACE), and one underwent ³²P glass microspheres (³²P-GMS) internal radiotherapy thrice through hepatic artery cannulation and subcutaneous implantation of a drug pump.

Laboratory examination

The average level of serum total bilirubin was 311.9 ± 186.9 $\mu\text{mol/L}$ (range 20.3-776.6 $\mu\text{mol/L}$), ALT was 119 ± 82 IU/L (range 16-428 IU/L), ALP was 423 ± 241 IU/L (range 116-1 038 IU/L), γ -GT was 410 ± 346 IU/L (range 98-1 637 IU/L), ALB was 37 ± 6 g/L (range 24-46 g/L). The hepatitis B surface antigen was positive in 35 cases (35/53, 66.0%). The hepatitis C antibody assay was positive in one case. The concentration of α -fetoprotein (AFP) was higher than

400 µg/L in 29 cases (29/53, 54.7%). Cirrhosis was found in 28 cases (28/53, 52.8%), ascites in 10 cases (10/53, 18.9%).

Imaging findings

Primary tumors and total BDTT in the common hepatic duct or the common bile duct (CBD) were detected by image investigations including ultrasonography (US), computed tomography (CT), endoscopic retrograde cholangiopancreatography and magnetic resonance cholangiopancreatography (MRCP). Three patients were misdiagnosed as cholangiocarcinoma, among them two cases underwent laparotomy and T-tube drainage in other hospitals, one case was found to have lung metastasis at the initial diagnosis.

Location and size of HCC and BDTT

No obvious primary liver tumor was found in seven cases, among them three cases were misdiagnosed as hilar cholangiocarcinoma (Figure 1). The diameter of the primary tumors ranged from 0.9 to 12 cm (mean value 5.0 ± 2.6 cm) in the remaining 46 cases. Of these, the diameter of the major tumor was larger than 10 cm in 6 cases, between 5 and 10 cm in 15 cases, less than 5 cm in 25 cases. Seventeen cases had multiple nodules, 29 had a single nodule. The tumors were involved in the right lobe ($n = 19$), the left lobe ($n = 13$), and the caudate lobe of liver ($n = 3$), the whole liver ($n = 11$). The tumor thrombi of CBD occurred in all cases. Thrombi coexisted in intrahepatic bile duct ($n = 38$), the right hepatic duct ($n = 5$), the left hepatic duct ($n = 4$), and the left and right hepatic ducts ($n = 6$). In addition, the tumor thrombi presented in the right branch ($n = 1$), and the left branch of portal vein ($n = 1$), the right branch of portal vein and the right hepatic vein ($n = 1$).

Statistical analysis

A database was established by SPSS 10.0 software. Data were expressed as mean \pm SD. Kaplan-Meier method and log-rank test were used for survival statistics. $P < 0.05$ was considered statistically significant.

RESULTS

Treatments

One patient refused surgery for other reasons. Fifty-two cases received treatments. Among them, six cases received non-surgical procedures including percutaneous transhepatic cholangio-drainage (PTCD, $n = 4$), biliary stent placement ($n = 2$). Forty-six cases underwent surgical operations including hepatectomy with thrombectomy and biliary drainage ($n = 21$), hepatic artery chemoembolization (HACE) for unresectable primary diseases and biliary drainage ($n = 5$), simple thrombectomy with biliary drainage ($n = 14$), and simple biliary drainage ($n = 4$). Among the 21 cases who underwent hepatectomy for their primary liver tumors, 2 cases underwent right hemihepatectomy, 2 left hemihepatectomy, 11 partial right lobectomy, 4 partial left lobectomy, 1 left hemihepatectomy with caudate lobectomy, 1 left hemihepatectomy with caudate lobectomy and segmentectomy. Simultaneously, one case underwent thrombectomy for the right branch thrombi of portal vein and the right hepatic vein thrombi via the transaction surfaces. Of the 14 cases

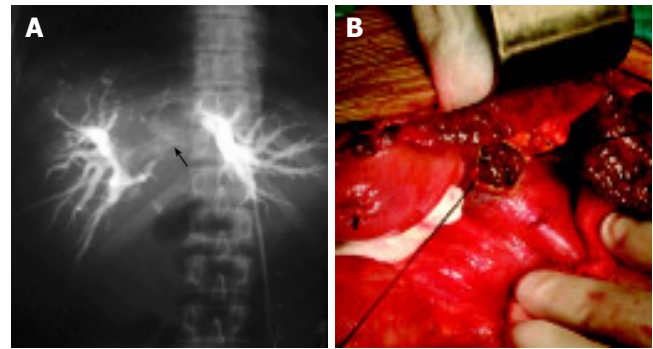


Figure 1 Location and size of HCC. **A:** Hilar obstruction indicating hilar cholangiocarcinoma (white arrow) shown by PTC. **B:** CBD tumor thrombi seen during intra-operation.

who underwent simple thrombectomy and biliary drainage, one underwent proper hepatic artery ligation (HAL), and the other right HAL at the same time.

Pathology

All the 53 cases were pathologically diagnosed as HCC by professional surgical pathologists. The BDTT consisted of tumor cells arranged like a nest of primary tumors, coexisting with red blood cells (RBC), leukocytes and necrotic tumor tissues.

Postoperative mortality and morbidity

Among the 46 patients who underwent operations, 8 died of hepatic failure postoperatively, the hospitalization mortality was 17.4% (8/46). One died 3 d after laparotomy, one died 26 d after simple thrombectomy with biliary drainage and right HAL, two died 7 and 45 d after simple thrombectomy with biliary drainage respectively, four died 7, 12, 15 and 38 d after hepatectomy with thrombectomy and biliary drainage respectively. Fifteen patients developed postoperative complications including liver function failure ($n = 8$), upper gastrointestinal hemorrhage ($n = 4$), pleural effusion ($n = 4$), serious coagulopathy ($n = 1$), intra-abdominal hemorrhage ($n = 1$), pleural hemorrhage ($n = 1$), biliary leakage ($n = 1$), subphrenic infection ($n = 1$), and lower limb venous thrombosis ($n = 1$). The postoperative morbidity was 32.6%. Of the six cases who received PTCD, one suffered from acute cholangitis, no death occurred.

Effect of treatment

The serum total bilirubin levels of these patients with obstructive jaundice decreased gradually. A total of 45 patients were followed up. One patient refused treatment and died 1 mo later. The survival time of six cases who underwent PTCD ranged from 2 to 7 mo (median survival of 3.7 mo). The survival time of the patients who received surgery was 2 mo for one patient who underwent laparotomy, 5-46 mo (median survival of 23.5 mo) for 17 cases who underwent hepatectomy, which was the longest survival compared to the patients who underwent other procedures (log-rank test, $P = 0.0024$), 5-17 mo (median survival of 10.0 mo) for 5 cases who underwent HACE, 3-9 mo (median survival of 6.1 mo) for 11 cases who underwent simple thrombectomy and biliary drainage, and 3-8 mo (median survival of 4.3 mo) for 4 cases who underwent simple biliary drainage.

DISCUSSION

BDTT derived from HCC is uncommon. However, bile duct invasion was commonly detected at necropsy in HCC patients with obstructive jaundice. In 1975, Lin *et al.*^[6], clinically classified such cases as “icteric type hepatoma”, which manifested as obstructive jaundice even at the early stage of tumors, and pointed out that its differential diagnosis was very difficult. In 1982, Kojiro *et al.*^[7], first described the clinical and pathological features of HCC invading the bile duct, and clarified that it was not equal to the portal vein thrombi (PVT), indicating the possibility of extensive dissemination in terms of severity of the disease. They considered that it was not necessarily a criterion of advanced disease. Actually, the rapid growth of the BDTT was rare and there was no report of BDTT extending to the duodenum. But BDTT could enlarge through blending with blood clotting and bile mucus, subsequently resulting in full obstruction of the biliary tract and obstructive jaundice.

The typical clinical features of BDTT were repeated episodes of cholangitis and fluctuating jaundice, which could be relieved by conservative treatment. For these manifestations, BDTT was often misdiagnosed as cholangiocarcinoma. Actually, in our series, three cases were misdiagnosed as hilar cholangiocarcinoma. In addition, it is essentially important to differ obstructive jaundice from hepatic jaundice caused by liver dysfunction due to extensive metastasis within the liver and underlying hepatitis and cirrhosis, because the later has no chance of surgery, but the former can gain a good outcome through operation and/or multi-modality treatment. We concluded that the following clues could help us differentiate BDTT from other types of jaundice. Patients had underlying hepatitis or liver cirrhosis, elevating serum AFP, and characteristic features of primary liver tumors presented in US and CT.

As to the imaging investigations, US is the most convenient and effective method to detect BDTT and intrahepatic primary tumors. Endoscopic sonography (EUS) can show a tumor thrombus with central echogenicity and a “nodule-in-nodule” pattern, which provides more accurate evidence for the diagnosis. Lee *et al.*^[8], reported a patient with a small HCC in caudate lobe and presence of obstructive jaundice. Preoperative EUS showed that it was tumor thrombi in CBD. In addition, intraoperative US could detect smaller or more deeply seated intrahepatic tumors. CT, MRI and MRCP could provide more information for us to know the extension of tumors and location of thrombi, and help us adopt proper treatment, in particular surgical procedure selection for patients. Intraoperative choledochoscopy and cholangiography can show the location of tumor thrombi and differentiate obstructions due to intraluminal mass, infiltrating ductal lesions or extrinsic mass compression. Jan and Chen^[9] reported 28 patients with obstructive jaundice as a result of floating tumor debris from ruptured tumors in CBD. Of these, 18 cases underwent choledochoscopy, and the tumor ruptured into right intrahepatic bile duct ($n = 9$), left intrahepatic bile duct ($n = 7$), and the confluence of the left and right hepatic ducts ($n = 2$). Hepatectomies were performed for four patients under the guide of choledochoscopy.

The size of primary tumors did not correlate with biliary metastasis^[10], and the primary liver tumors with obstructive

jaundice might be small and resectable. In our series, primary liver tumors were not detectable in seven cases. Twenty-five cases had tumors with a diameter of less than 5 cm, suggesting that obstructive jaundice is not a criterion of late-stage HCC and a contraindication for surgery necessarily^[11].

The managements of BDTT include hepatectomy, thrombectomy, biliary drainage, TACE, internal biliary stenting, radiotherapy, percutaneous transhepatic ethanol injection (PTEI), *etc.* Surgical resection has been the ideal treatment and the only way for patients to achieve a long-term survival^[12-14]. Most patients might have satisfactory palliation and opportunity for cure after surgery^[15]. The selection of surgical procedures was based on the nature and location of the main tumor and thrombi, severity of cirrhosis, associated biliary neoplastic strictures, the overall status of patients, and the experience of surgeons. If the condition of patients was good and the primary liver tumor was resectable, the primary tumor should be resected after thrombectomy. Even if it was only a palliative resection, it could increase the survival time. If no liver tumor was detected, biliary decompression and drainage should be performed through choledochotomy and thrombectomy. To the unresectable diseases, HAL and HACE might be beneficial to some selected cases^[16-19]. Shiomi *et al.*^[12], reviewed 132 patients with HCC who underwent hepatectomy between 1980 and 1999. Of these, 17 with BDTT underwent right hemihepatectomy, 1 caudate lobectomy, 11 right or left hemihepatectomy and 5 segmentectomy. Their 3- and 5-year survival rates were 47% and 28% respectively, and the median survival time was 2.3 years, similar to those achieved in 115 patients without BDTT. Fukuda *et al.*^[20], reported that after the patients with HCC and extrahepatic bile duct thrombi underwent tumor resection and HACE, the longest survival time of some patients reached 215 mo. In our 46 cases undergoing surgery, the postoperative mortality was 17.4%, and the morbidity was 32.6%. The survival time of the patients who underwent hepatectomy, thrombectomy and biliary drainage ranged from 5 to 46 mo with a median time of 23.5 mo. We concluded that the poor prognosis of these patients was due to the late diagnosis and obstructive jaundice that resulted in irreversible liver failure. In our study, one patient died 3 d after laparotomy, indicating that early diagnosis and surgical treatment are critically important to improve the prognosis of HCC patients.

BDTT is different from PVT. Complete removal of the later is sometimes difficult because portal vein provides the main blood supply for thrombi. However, it is easy to remove BDTT because most of thrombi do not adhere to the wall of bile duct tightly. Narita *et al.*^[21], reported one case of small HCC in the left lobe with bile duct thrombi, and they found that the thrombi just adhered to the mucosa of bile duct, rather than invaded submucosa. Primary tumor resection and thrombectomy may achieve satisfactory palliation and cure. However, active hemorrhage occurred during operation in some cases, this may be due to the continuity of BDTT with the main intrahepatic tumor or BDTT invading the bile duct wall. But bleeding could be easily controlled after primary tumor was removed. For patients with multiple and unresectable tumors or biliary hemorrhage, thrombectomy and T-tube drainage with HAL could control bleeding and

relieve jaundice, and subsequently improve liver function. The survival time of these patients may be prolonged.

PTCD and biliary stent placement could alleviate jaundice^[22,23]. TACE and PTEI could control the growth of tumors, improve the quality of life and survival rate after jaundice was relieved^[24-26]. Endoscopic biliary drainage (EBD) for unresectable HCC with obstructive jaundice remains controversial because of no benefit to survival. Matsueda *et al.*^[27], suggested that EBD was one of the effective treatments for patients with unresectable malignant biliary stenosis, and obstructive jaundice due to bile duct thrombi. However, EBD was often difficult in HCC patients with obstructive jaundice because of proximal biliary obstruction at the hilum, and multiple tumors diffusing in the whole liver. The decision to perform EBD should be based on the nature and location of thrombi, the condition of liver function, and the presence of PVT. In addition, endoscopic sphincterotomy could benefit the discharge of necrotic thrombi and further improvement of overall status, after endoscopic nasobiliary drainage resolved the obstruction^[28,29].

There is a considerable controversy over the role of transplantation in patients with HCC. Liver transplantation for HCC patients with BDTT is rare. Peng *et al.*^[30,31], have reported one patient who underwent piggyback orthotopic liver transplantation and survived for 27 mo. This suggests that selected HCC patients with BDTT may benefit from liver transplantation, but it needs to be studied further.

REFERENCES

- 1 **Becker FF.** Hepatoma-nature's model tumor. *Am J Pathol* 1974; **74**: 179-210
- 2 **Chen MF.** Icteric type hepatocellular carcinoma: clinical features, diagnosis and treatment. *Chang Gung Med J* 2002; **25**: 496-501
- 3 **Huang GT,** Sheu JC, Lee HS, Lai MY, Wang TH, Chen DS. Icteric type hepatocellular carcinoma: revisited 20 years later. *J Gastroenterol* 1998; **33**: 53-56
- 4 **Kew MC,** Paterson AC. Unusual clinical presentations of hepatocellular carcinoma. *Trop Gastroenterol* 1985; **6**: 10-22
- 5 **Peng BG,** Huang JF, Liang LJ, Lu MD. The surgical treatment of hepatocellular carcinoma involving the bile duct: 20 cases reported. *Chin J Practical Surg* 1996; **16**: 484-485
- 6 **Lin TY,** Chen KM, Chen YR, Lin WS, Wang TH, Sung JL. Icteric type hepatoma. *Med Chir Dig* 1975; **4**: 267-270
- 7 **Kojiro M,** Kawabata K, Kawano Y, Shirai F, Takemoto N, Nakashima T. Hepatocellular carcinoma presenting as intrabiliary duct tumor growth: a clinicopathologic study of 24 cases. *Cancer* 1982; **49**: 2144-2147
- 8 **Lee YC,** Wang HP, Huang SP, Chang YT, Wu CT, Yang CS, Wu MS, Lin JT. Obstructive jaundice caused by hepatocellular carcinoma: detection by endoscopic sonography. *J Clin Ultrasound* 2001; **29**: 363-366
- 9 **Jan YY,** Chen MF. Obstructive jaundice secondary to hepatocellular carcinoma rupture into the common bile duct: choledochoscopic findings. *Hepatogastroenterology* 1999; **46**: 157-161
- 10 **Tseng JH,** Hung CF, Ng KK, Wan YL, Yeh TS, Chiu CT. Icteric-type hepatoma: magnetic resonance imaging and magnetic resonance cholangiographic features. *Abdom Imaging* 2001; **26**: 171-177
- 11 **Hu J,** Pi Z, Yu MY, Li Y, Xiong S. Obstructive jaundice caused by tumor emboli from hepatocellular carcinoma. *Am Surg* 1999; **65**: 406-410
- 12 **Shiomi M,** Kamiya J, Nagino M, Uesaka K, Sano T, Hayakawa N, Kanai M, Yamamoto H, Nimura Y. Hepatocellular carcinoma with biliary tumor thrombi: aggressive operative approach after appropriate preoperative management. *Surgery* 2001; **129**: 692-698
- 13 **Nishio H,** Miyata K, Hanai M, Kato M, Yoneyama F, Kobayashi Y. Resection of an icteric type hepatoma with tumor thrombi filling the right posterior bile duct. *Hepatogastroenterology* 2002; **49**: 1682-1685
- 14 **Shimada M,** Takenaka K, Hasegawa H, Shirabe K, Gion T, Kano T, Sugimachi K. Hepatic resection for icteric type hepatocellular carcinoma. *Hepatogastroenterology* 1997; **44**: 1432-1437
- 15 **Murakami Y,** Yokoyama T, Kanehiro T, Uemura K, Sasaki M, Morifuji M, Sueda T. Successful diagnosis and resection of icteric type hepatocellular carcinoma. *Hepatogastroenterology* 2003; **50**: 1634-1636
- 16 **Jan YY,** Chen MF, Chen TJ. Long term survival after obstruction of the common bile duct by ductal hepatocellular carcinoma. *Eur J Surg* 1995; **161**: 771-774
- 17 **Tantawi B,** Cherqui D, Tran van Nhieu J, Kracht M, Fagniez PL. Surgery for biliary obstruction by tumour thrombus in primary liver cancer. *Br J Surg* 1996; **83**: 1522-1525
- 18 **Lau W,** Leung K, Leung TW, Liew CT, Chan MS, Yu SC, Li AK. A logical approach to hepatocellular carcinoma presenting with jaundice. *Ann Surg* 1997; **225**: 281-285
- 19 **Wang HJ,** Kim JH, Kim JH, Kim WH, Kim MW. Hepatocellular carcinoma with tumor thrombi in the bile duct. *Hepatogastroenterology* 1999; **46**: 2495-2499
- 20 **Fukuda S,** Okuda K, Imamura M, Imamura I, Eriguchi N, Aoyagi S. Surgical resection combined with chemotherapy for advanced hepatocellular carcinoma with tumor thrombus: report of 19 cases. *Surgery* 2002; **131**: 300-310
- 21 **Narita R,** Oto T, Mimura Y, Ono M, Abe S, Tabaru A, Yoshikawa I, Tanimoto A, Otsuki M. Biliary obstruction caused by intrabiliary transplantation from hepatocellular carcinoma. *J Gastroenterol* 2002; **37**: 55-58
- 22 **Lee JW,** Han JK, Kim TK, Choi BI, Park SH, Ko YH, Yoon CJ, Yeon KM. Obstructive jaundice in hepatocellular carcinoma: response after percutaneous transhepatic biliary drainage and prognostic factors. *Cardiovasc Intervent Radiol* 2002; **25**: 176-179
- 23 **Okazaki M,** Mizuta A, Hamada N, Kawamura N, Nakao K, Kikuchi T, Osada T. Hepatocellular carcinoma with obstructive jaundice successfully treated with a self-expandable metallic stent. *J Gastroenterol* 1998; **33**: 886-890
- 24 **Hu P,** Zhou DY, Gong B, Wang SZ, Yang GS, Wu MC. Endoscopic management of 1 215 malignant bile duct obstructions. *Chin J Surg* 2001; **39**: 195-198
- 25 **Tada K,** Kubota K, Sano K, Noie T, Kosuge T, Takayama T, Makuuchi M. Surgery of icteric-type hepatoma after biliary drainage and transcatheter arterial embolization. *Hepatogastroenterology* 1999; **46**: 843-848
- 26 **Huang JF,** Wang LY, Lin ZY, Chen SC, Hsieh MY, Chuang WL, Yu MY, Lu SN, Wang JH, Yeung KW, Chang WY. Incidence and clinical outcome of icteric type hepatocellular carcinoma. *J Gastroenterol Hepatol* 2002; **17**: 190-195
- 27 **Matsueda K,** Yamamoto H, Umeoka F, Ueki T, Matsumura T, Tezen T, Doi I. Effectiveness of endoscopic biliary drainage for unresectable hepatocellular carcinoma associated with obstructive jaundice. *J Gastroenterol* 2001; **36**: 173-180
- 28 **Naranjo Rodriguez A,** Puente Gutierrez J, Hervas Molina A, de Dios Vega JF, Monrobel Lancho A, Gonzalez Galilea A, Mino Fugarolas G. Endoscopic drainage with polyethylene endoprosthesis of malignant obstructive jaundice. *Gastroenterol Hepatol* 1999; **22**: 391-397
- 29 **Spahr L,** Frossard JL, Felley C, Brundler MA, Majno PE, Hadengue A. Biliary migration of hepatocellular carcinoma fragment after transcatheter arterial chemoembolization therapy. *Eur J Gastroenterol Hepatol* 2000; **12**: 243-244
- 30 **Peng SY,** Wang JW, Liu YB, Cai XJ, Deng GL, Xu B, Li HJ. Surgical intervention for obstructive jaundice due to biliary tumor thrombus in hepatocellular carcinoma. *World J Surg* 2004; **28**: 43-46
- 31 **Peng SY,** Wang JW, Liu YB, Cai XJ, Xu B, Deng GL, Li HJ. Hepatocellular carcinoma with bile duct thrombi: analysis of surgical treatment. *Hepatogastroenterology* 2004; **51**: 801-804