

VOLUME 288 (2013) PAGES 16295–16307

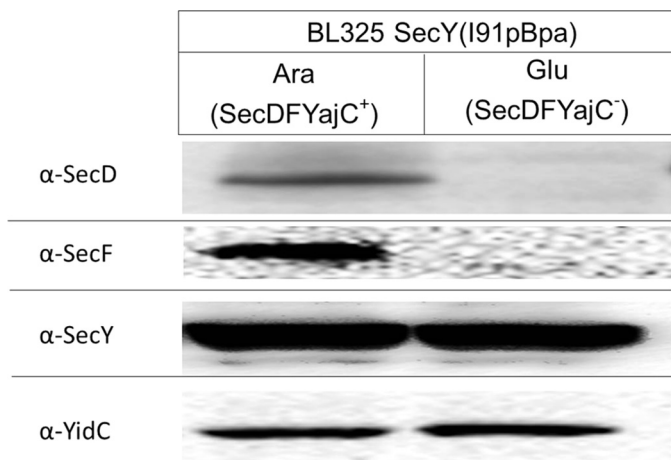
DOI 10.1074/jbc.A112.446583

## YidC occupies the lateral gate of the SecYEG translocon and is sequentially displaced by a nascent membrane protein.

Ilie Sachelaru, Narcis Adrian Petriman, Renuka Kudva, Patrick Kuhn, Thomas Welte, Bettina Knapp, Friedel Drepper, Bettina Warscheid, and Hans-Georg Koch

PAGE 16301:

The immunoblot data in Fig. 4A was not obtained from a conditional secDF depletion strain *Escherichia coli* BL325 with a plasmid-borne copy of SecY(I91pBpa)EG as stated. The correct images representing SecD, SecF, SecY, and YidC levels in inner membrane vesicles of the conditional secDF depletion strain *E. coli* BL325 with a plasmid-borne copy of SecY(I91pBpa)EG are now shown. This correction does not affect the interpretation of the results or the conclusions of this work.



Authors are urged to introduce these corrections into any reprints they distribute. Secondary (abstract) services are urged to carry notice of these corrections as prominently as they carried the original abstracts.