

Phosphatidylinositol Phosphate 5-Kinase I γ and Phosphoinositide 3-Kinase/Akt Signaling Couple to Promote Oncogenic Growth*

Received for publication, July 14, 2014, and in revised form, May 18, 2015. Published, JBC Papers in Press, June 12, 2015, DOI 10.1074/jbc.M114.596742

Narendra Thapa, Suyong Choi, Xiaojun Tan, Thomas Wise, and Richard A. Anderson¹

From the Molecular and Cellular Pharmacology Program, University of Wisconsin, School of Medicine and Public Health, Madison, Wisconsin 53706

Background: PIP₂ generated by PIPKI family members regulates many cellular functions, and PIP₂ is a PI3K substrate.

Results: Loss of PIPKI γ or PIPKI γ i2 impaired Akt activation. PIPKI γ i2 and Src activate Akt and anchorage-independent growth.

Conclusion: PI3K/Akt signaling is regulated by coupling with PIPKI γ .

Significance: The coupling of PIPKI γ and PI3K indicates a mechanism for Akt activation that enhances oncogenic growth.

The assembly of signaling complexes at the plasma membrane is required for the initiation and propagation of cellular signaling upon cell activation. The class I PI3K and the serine/threonine-specific protein kinase Akt signaling pathways (PI3K/Akt) are often activated in tumors. These pathways are initiated by the generation of phosphatidylinositol 3,4,5-triphosphate (PIP₃) by PI3K-mediated phosphorylation of phosphatidylinositol 4,5-bisphosphate (PIP₂), synthesized by phosphatidylinositol 4-phosphate 5-kinase (PIPKI) enzymes. The mechanism of how tumor cells recruit and organize the PIP₂-synthesizing enzymes with PI3K in the plasma membrane for activation of PI3K/Akt signaling is not defined. Here, we demonstrated a role for the phosphatidylinositol 4-phosphate 5-kinase I γ (PIPKI γ) in PI3K/Akt signaling. PIPKI γ is overexpressed in triple-negative breast cancers. Loss of PIPKI γ or its focal adhesion-targeting variant, PIPKI γ i2, impaired PI3K/Akt activation upon stimulation with growth factors or extracellular matrix proteins in different tumor cells. PIPKI γ i2 assembles into a complex containing Src and PI3K; Src was required for the recruitment of PI3K enzyme into the complex. PIPKI γ i2 interaction with Src and its lipid kinase activity were required for promoting PI3K/Akt signaling. These results define a mechanism by which PIPKI γ i2 and PI3K are integrated into a complex regulated by Src, resulting in the spatial generation of PIP₂, which is the substrate PI3K required for PIP₃ generation and subsequent Akt activation. This study elucidates the mechanism by which PIP₂-generating enzyme controls Akt activation upstream of a PI3K enzyme. This pathway may represent a signaling nexus required for the survival and growth of metastasizing and circulating tumor cells *in vivo*.

Tumor cells receive survival and proliferative signals from diverse stimuli, such as growth factors, cytokines, and extracellular matrix (ECM)² proteins (1). Among signaling pathways initiated by these stimuli, PI3K/Akt signaling is one of the most common pathways implicated in tumor cell growth and survival (2–4). The PI3K enzymes activated by these diverse stimuli convert PIP₂ into PIP₃, promoting the recruitment and activation of cytosolic proteins, PDK1 and Akt, to the plasma membrane and initiating PI3K/Akt signaling cascades (2–4). Cancer cells exploit various mechanisms to activate and sustain PI3K/Akt signaling (2–4). Most of them are associated with PTEN loss or the activation of the PI3K enzyme due to mutations in its catalytic subunit (2–4). However, the functional role of lipid kinases that synthesize PIP₂, precursor for PIP₃, remains poorly explored in the regulation of PI3K/Akt signaling. The localized synthesis of PIP₂ and PIP₃ suggest that lipid kinases generating PIP₂ and PIP₃ work together in a coordinated and regulated manner for Akt activation. In the context of highly divergent mechanisms for Akt activation in oncogenesis, the precise understanding of how PIP₂- and PIP₃-generating lipid kinases work together to regulate PI3K/Akt signaling paves the way for the development of a novel therapeutic approach in controlling the PI3K/Akt signaling axis in cancer.

In mammalian cells, PIP₂ is predominantly synthesized by type I PIPK enzymes (classified into PIPKI α , PIPKI β , and PIPKI γ), which are targeted to distinct subcellular compartments via interactions with specific binding partners, which are often PIP₂ effector molecules (5–9). These interactions facilitate PIP₂ control of diverse cellular functions. PIPKI α is predominantly localized to the nucleus and controls the nuclear events, whereas PIPKI β is targeted to perinuclear regions/endosomes (9, 10). PIPKI γ is expressed as at least six splice variants (PIPKI γ i1, PIPKI γ i2, PIPKI γ i3, PIPKI γ i4, PIPKI γ i5, and PIPKI γ i6) in mammalian cells (11, 12); among them, PIPKI γ i2

* This work was supported, in whole or in part, by National Institutes of Health Grants CA104708 and GM057549 (to R. A. A.). This work was also supported by American Heart Association Grants 10POST4290052 (to N. T.) and 13PRE14690057 (to S. C.) and a Howard Hughes Medical Institute International Student Research Fellowship (to X. T.). The authors declare that they have no conflicts of interest with the contents of this article.

¹ To whom correspondence should be addressed: 3750 Medical Science Center, 1300 University Ave., University of Wisconsin, School of Medicine and Public Health, Madison, WI 53706. Tel.: 608-262-3753; Fax: 608-262-1257; E-mail: raanders@wisc.edu.

² The abbreviations used are: ECM, extracellular matrix protein; PLC, phospholipase C; SH2, Src homology domain 2; SH3, Src homology domain 3; PIP₂, phosphatidylinositol 4,5-bisphosphate; PIP₃, phosphatidylinositol 3,4,5-triphosphate; PIPKI, phosphatidylinositol 4-phosphate 5-kinase; PTEN, phosphatase and tensin homolog.

Regulation of PI3K/Akt Signaling by PIPKI γ

can be targeted to the cell-matrix interface via an interaction with talin and plays role in focal adhesion assembly (13–15), whereas PIPKI γ 4 and PIPKI γ 5 are localized to the nucleus and endosomes, respectively (11, 16). Src phosphorylation of PIPKI γ 2 regulates its interaction with talin and its targeting to focal adhesion sites (17). Furthermore, Src and PIPKI γ 2 are directly interacting partners, both required for oncogenic growth of tumor cells (18). Recently, PIPKI γ has been shown to modulate breast cancer metastasis, although the specific isoforms involved were not defined (19).

The class I PI3K enzymes are heterodimers of two distinct subunits, an adaptor (e.g. p85, p50, and p55) and a catalytic (e.g. p110 α , p110 β , and p110 δ) (2–4). PI3K is rapidly recruited to activated growth factor receptors (SH2 domain of the adaptor subunit mediating the interaction to the phosphorylated YXXM motif of the receptor) or integrin-mediated adhesion complex (via interaction with focal adhesion kinase in the adhesion complex), promoting its activation and PIP₃ synthesis (2, 20). For PIPKI enzymes, the mechanism by which they are recruited to the proximity of the activated growth factor receptors or integrin-mediated adhesion complex to synthesize the spatial pool of PIP₂ is not understood. This may be a crucial mechanism for providing a discrete pool of PIP₂ required for PIP₃ synthesis and Akt activation. Therefore, we embarked on a systematic investigation to define the role of PIPKI enzymes in PI3K/Akt activation in response to stimulation with growth factors and ECM proteins.

Here we show that in a wide variety of cell lines, PIPKI γ was the major PIPKI enzyme contributing to PI3K/Akt signaling in response to activation of growth factor and adhesion receptors in suspension condition. The loss of PIPKI γ 2, a focal adhesion-targeted variant of PIPKI γ , recapitulated the effect of PIPKI γ knockdown in PI3K/Akt activation. PIPKI γ 2 integrated into a complex with Src and PI3K. Src mediated the incorporation of both PIPKI γ 2 and PI3K into the complex via Src association with the p85 subunit of PI3K. The co-expression of PIPKI γ 2 with Src resulted in sustained activation of PI3K/Akt. Furthermore, PIPKI γ 2 and Src interaction, and its lipid kinase activity were required for PI3K/Akt activation. These results define a mechanism by which PIPKI γ 2 functions with the proto-oncogene Src to activate and sustain the PI3K/Akt signaling required for the anchorage-independent or oncogenic growth of tumor cells.

Experimental Procedures

Materials—Antibodies used were as follows: pAkt (193H12), Akt (11E7), pErk1/2 (9101) and Erk1/2 (9102), Src (2108S), p110 α (4255s), p110 β (3011s), and p85 (4292) were purchased from Cell Signaling; antibody for HA (MMS-101R) was purchased from Covance. Antibodies for PIPKI α , PIPKI γ , and PIPKI γ 2 were developed in the laboratory (13, 17, 21).

DNA Constructs and siRNA—DNA constructs used in the study were described previously (18, 22). siRNA oligonucleotides used were as follows: control siRNA, CCUUGGUGACUCGUAGUUU; siPIPKI γ 2, GAGCGACACAUAUUUCUA; siPIPKI γ 5, GGAUGGGAGGUACUGGAUU; siPIPKI γ , GCCACCTTCTTTCGAAGAA; siPIPKI α , GAAGUUGGAGCACUCUUGG; siSrc,

GGCUCCAGAUUGUCAACAA and GCCUCAACGUGAAGCACUA.

Cell Culture—MDA-MB-231, Cal51, MCF-7, NIH3T3, HEK293, and HEK293FT cells were cultured in DMEM containing 10% FBS. T47D cells were cultured in RMPI-1640 containing 10% FBS. SUM159 and SUM1315 cells were cultured in Ham's F-12 supplemented with 5% FCS. All cells were grown at 37 °C in a 5% CO₂ incubator.

Transfection or Lentiviral Infection—For siRNA-mediated knockdown of gene expression, LipofectamineRNAiMAX (Invitrogen) was used following the protocol provided by manufacturer, and cells were used 48–72 h post-transfection. For transient transfection into HEK293 cells, Lipofectamine 2000 (Invitrogen) was used. Cells were harvested 24 h post-transfection. For the expression or co-expression of genes into MDA-MB-231 or NIH3T3, a lentiviral system was used as described previously (22). Cells were harvested 48 h postinfection (70–80% of infection efficiency was achieved for the experiments).

Stimulation in Suspension Condition—For the stimulation of cells in the suspension condition, cells were serum-starved overnight, followed by trypsinization and resuspension of cells in serum-free DMEM containing 0.2% BSA. Cells were incubated for 1–2 h in a CO₂ incubator before stimulating with FBS (2.5–5% FBS) or EGF (1–10 ng/ml) or ECM protein (combination of fibronectin/collagen type I, 25 μ g/ml each) for the indicated time periods. “Suspension condition” refers to the cells resuspended in their corresponding medium containing 0.2% BSA and 0.5% FBS after trypsinization/detachment. Cells were incubated at 37 °C in an incubator for 2–3 h except for in the time course study. For overnight culture in suspension condition, cells suspended in the medium were seeded into the culture plate coated with 0.3% agar to avoid cell attachment and incubated in a CO₂ incubator.

Immunoprecipitation and Immunoblotting—Cells were lysed using lysis buffer (50 mM Tris-HCl (pH 7.4), 150 mM NaCl, 0.5% Triton X-100, 1 mM EDTA, 10 mM NaF, 5 mM Na₃VO₄, and protease inhibitors). Clear supernatants were incubated with the indicated antibodies for 3–4 h to overnight at 4 °C, followed by isolation of immunocomplexes using protein G-Sepharose 4B beads (Amersham Biosciences). Beads were washed three times with lysis buffer before eluting the immunocomplexes with 2 \times sample buffer and then subjected to immunoblotting using specific antibodies.

Anchorage-independent Growth—For anchorage-independent growth, cells were suspended into the medium containing 0.3% agar and seeded into 24-well culture plates (18). To avoid cell attachment, culture plates were precoated with 0.5% agar before cell seeding. Cultures were fed with fresh medium in every 3–5 days and cultured for 1–3 weeks. For inhibition of Akt signaling, PI3K inhibitor (LY294002, 10 μ M) was added into the medium. Colonies developed were fixed with 3.7% paraformaldehyde and stained with 0.1% crystal violet to facilitate the visualization and counting of colonies.

Immunofluorescence Microscopy—For the immunofluorescence study, colonies developed in the soft agar were fixed with 3.7% paraformaldehyde, followed by cell permeabilization with 0.1% Triton-X and blocking with 3% BSA in PBS. Cells were incubated with primary antibody overnight at

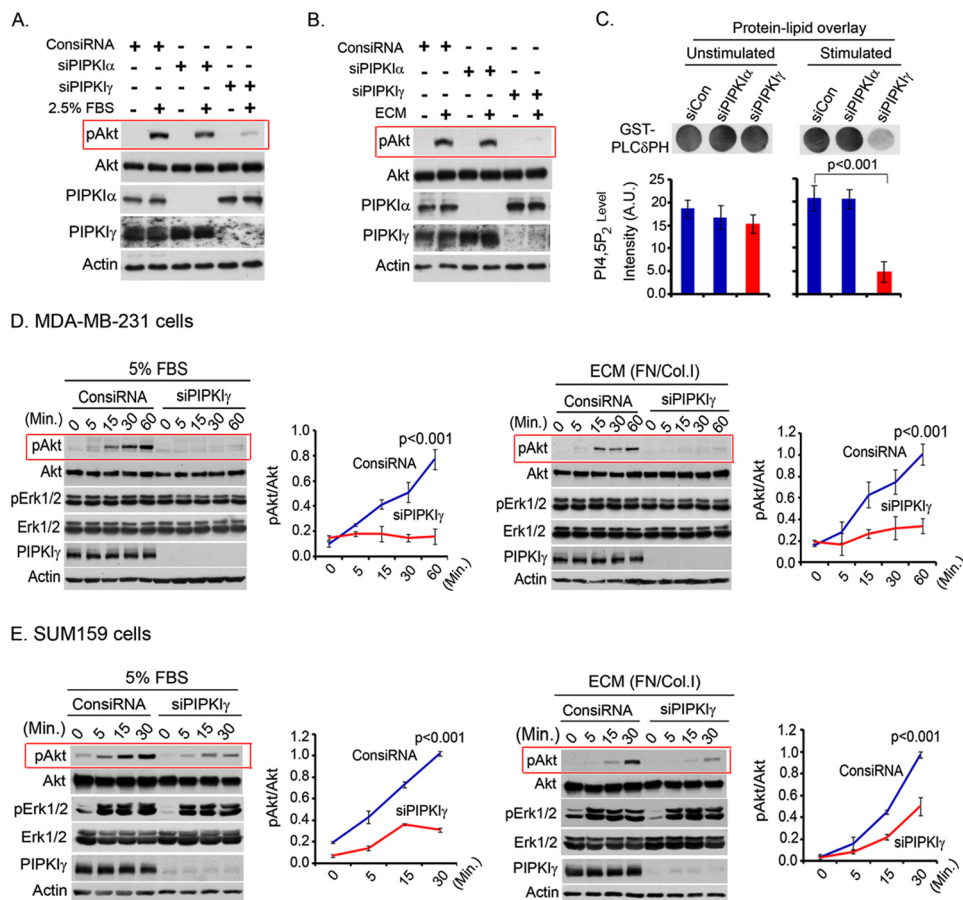


FIGURE 1. PIPKI γ knockdown blocked Akt activation upon FBS or ECM stimulation. *A* and *B*, MDA-MB-231 cells were transfected with isoform-specific siRNA for PIPKI knockdown. 48 h post-transfection, cells were serum-starved overnight and resuspended into the serum-free medium. Cells were stimulated with FBS (*A*) or ECM protein (*B*) for 10 min in the suspension condition. Activated Akt was examined by immunoblotting using phospho-specific antibody for activated Akt. *C*, PI $_2$ level in the cells was examined by a protein-lipid overlay assay. Acidic lipids were isolated from an equal number of cells as described under "Experimental Procedures." The isolated lipids were spotted into the nitrocellulose membrane before incubating with purified GST-PLC δ PH protein. HRP-labeled anti-GST antibody was used to detect the bound GST-PLC δ PH. A.U., arbitrary units. *D*, siRNA was used to knock down PIPKI γ expression in MDA-MB-231 cells. As described above, cells were stimulated with FBS or ECM for different time periods before examining the activated Akt and Erk1/2 by immunoblotting. The same experiments were repeated using SUM159 cells (*E*). Results are represented as means \pm S.D. (error bars) from three independent experiments.

4 °C, followed by incubation with Alexa555- and/or Alexa488-conjugated secondary antibodies (Molecular Probes) for 1 h at room temperature. Slides were mounted using Vectashield and visualized with a Nikon TE2000-U microscope. Images were acquired using MetaMorph and processed using Adobe Photoshop.

Protein-Lipid Overlay Assay—The effect of PIPKI γ knockdown or PIPKI γ 2 overexpression on cellular level of PI $_2$ and PI $_3$ were examined by a protein-lipid overlay assay (23). Briefly, acidic lipids containing PI $_2$ and PI $_3$ were isolated from unstimulated or stimulated cells following the protocol provided by Echelon Biosciences. Equal numbers of cells were used for the lipid extraction (5×10^5 cells for PI $_2$ and 10×10^6 for PI $_3$). Isolated lipids were dissolved into MeOH·CHCl $_3$ ·HCl and spotted onto nitrocellulose membrane, followed by blocking with 3% BSA in Tris-buffered saline (TBS) containing 0.1% Tween 20 (TBS-T). Membranes were incubated with GST-PLC δ -PH (0.5 μ g/ml; Echelon Biosciences) or GST-GRP1-PH (1 μ g/ml; Echelon Biosciences) overnight at 4 °C. The bound proteins with the lipids in the membrane were detected using HRP-labeled anti-GST antibody (Sigma). The signals generated

were measured by the ImageJ program (National Institutes of Health).

Statistical Analysis—The data are presented mean \pm S.D. from at least three independent experiments. An unpaired *t* test was conducted to determine the *p* value and the statistical significance between two groups (*p* < 0.05 was considered significant).

Results

PIPKI γ Is Required for PI3K/Akt Activation—The role of individual PIPKI enzymes was investigated in Akt activation in response to FBS or ECM protein stimulation. Cells were stimulated in suspension because this facilitated the segregation of PI3K/Akt signaling initiated in response to growth factors *versus* ECM proteins. These conditions are also relevant to metastasizing tumor cells in the vasculature or lymphatic circulation as well as circulating tumor cells found in cancer patients (24, 25).

Specific siRNA was used to knock down individual PIPKI isoforms from MDA-MB-231 or other cell lines. The knockdown of PIPKI γ impaired Akt activation in response to both

Regulation of PI3K/Akt Signaling by PIPK1 γ

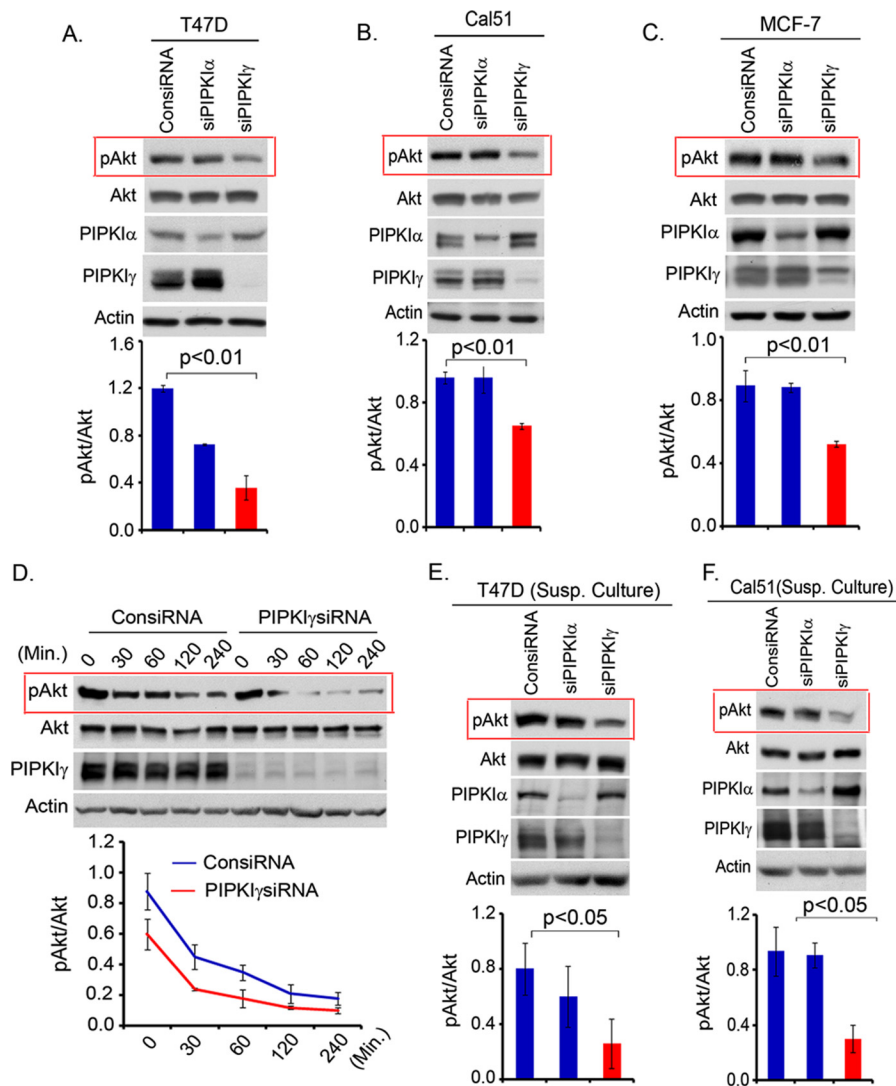


FIGURE 2. Persistence of PI3K/Akt signaling is impaired upon the loss of PIPK1 γ . A–C, isoform-specific siRNA were used to knock down PIPK1 expression in T47D, Cal51, and MCF-7 cells. Cells were harvested 48–72 post-transfection to examine the activated Akt level by immunoblotting. D, T47D cells after siRNA transfection for PIPK1 γ knockdown in the adherent condition were incubated in serum free-medium for different time periods before examining the activation level of Akt by immunoblotting. E and F, isoform-specific siRNA was used to knockdown PIPK1 expression in T47D and Cal51 cells. 48 h post-transfection, cells were resuspended and cultured in the suspension condition by seeding the cells into culture plates precoated with soft agar. Cells were harvested 1–2 days later to examine the activation level of Akt in suspension culture. Results are represented as mean \pm S.D. (error bars) from three independent experiments.

FBS and ECM protein stimulation of the cells (Fig. 1, A and B). This is consistent with the PIPK1 γ function in organizing the signaling complex at the plasma membrane and in PIP₂ synthesis, the PI3K substrate for PIP₃ generation and Akt activation. The knockdown of PIPK1 α in comparison showed little impact on Akt activation, demonstrating specificity for PIPK1 γ . The impaired activation level of PI3K/Akt was correlated with a significantly decreased PIP₂ level in PIPK1 γ knockdown cells upon stimulation with FBS and ECM protein in suspension condition (Fig. 1C). Because PIPK1 γ is overexpressed in triple-negative breast cancer tissues and plays a role in anchorage-independent growth of tumor cells (18, 26), its role in PI3K/Akt signaling was further examined. The effect of PIPK1 γ knockdown on the time course of Akt activation after FBS or ECM stimulation of MDA-MB-231 cells was examined (Fig. 1D). Similar results were obtained in a number of different cell lines, including SUM159 and SUM1315 (Fig. 1E) (data not shown). Furthermore, the effect of PIPK1 γ knockdown was more spe-

cific toward PI3K/Akt activation because the phosphorylation level of Erk1/2 was minimally affected. However, we could not investigate the effect of PIPK1 γ knockdown on Erk1/2 activation in MDA-MB-231 cells because Erk1/2 is constitutively active in this cell line (Fig. 1D).

PIP1 γ Knockdown Impaired Persistent PI3K/Akt Signaling—Persistent Akt activation is a key mechanism in oncogenic growth regulation (2, 4). The role of different PIPK1 enzymes in protracted PI3K/Akt signaling was examined in different tumor cell lines, including T47D, Cal51, and MCF-7, that show constitutive and higher activation levels of PI3K/Akt signaling due to mutation in the p110 α catalytic subunit of the PI3K enzyme (27, 28). As shown in Fig. 2, A–C, the activation level of Akt maintained in T47D, Cal51, and MCF-7 cells growing in normal growth medium was diminished upon PIPK1 γ knockdown. Similarly, the knockdown of PIPK1 γ in T47D cells significantly abrogated the strength and duration of Akt activation upon withdrawal of serum-containing medium (Fig. 2D). Similar to

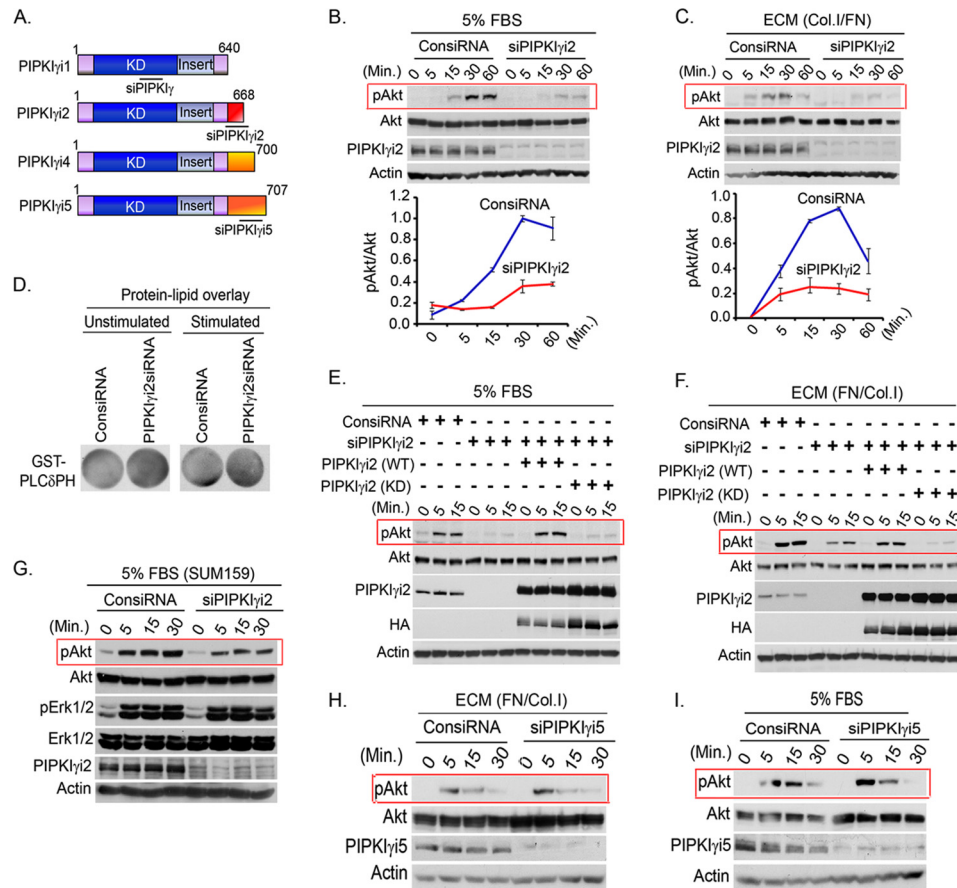


FIGURE 3. PIPKI γ 2 knockdown impaired PI3K/Akt signaling. *A*, schematic diagram of PIPKI γ variants and target sites for the siRNA used are indicated. *B* and *C*, MDA-MB-231 cells were transfected with siRNA specific for PIPKI γ 2. 48–72 h post-transfection, cells were serum-starved overnight and resuspended into serum-free medium before stimulating with FBS or ECM for different time periods. The activation level of Akt was examined by immunoblotting using phospho-specific antibody as described above. *D*, PIP₂ level in the cells was examined by protein-lipid overlay assay as described above. *E* and *F*, endogenous PIPKI γ 2 was silenced using siRNA from MDA-MB-231 cells or MDA-MB-231 cells overexpressing siRNA-resistant PIPKI γ 2 (WT) or its kinase dead mutant, PIPKI γ 2 (KD). Cells were stimulated with FBS and ECM protein as described above before examining the activated Akt. *G*, siRNA was used to knockdown PIPKI γ 2 in SUM159 cells before examining its effect on the activation level of Akt and Erk1/2 upon stimulation with FBS as described above. *H* and *I*, MDA-MB-231 cells transfected with siRNA specific for PIPKI γ 5 were stimulated with FBS and ECM protein as described above, and the activation level of Akt was examined as described above.

the adherent condition, these cells maintained a higher level of activated Akt in the suspension condition, which plays a critical role in the oncogenic growth regulation of these tumor cells. As shown in Fig. 2, *E* and *F*, PIPKI γ knockdown significantly abrogated the activation level of Akt in the suspension culture of T47D and Cal51 cells and is consistent with the impaired anchorage-independent growth of these tumor cells upon PIPKI γ loss (18).

The Loss of PIPKI γ 2 Mimics the Loss of PIPKI γ on PI3K/Akt Activation—Previously, we have shown that PIPKI γ 2 and Src control anchorage-independent growth of tumor cells (18). The role of PIPKI γ 2, a focal adhesion-targeting variant of PIPKI γ (for a schematic diagram of PIPKI γ variants, see Fig. 3*A*), was investigated with the hypothesis that it plays a major role in the spatial synthesis of PIP₂ required for PIP₃ generation in response to growth factor receptor and adhesion receptor activation, consistent with the compartmentalization of cellular signaling (6, 29). As shown in Fig. 3, *B* and *C*, the knockdown of PIPKI γ 2 recapitulated the effect of PIPKI γ knockdown on PI3K/Akt activation. However, unlike the knockdown of pan-PIPKI γ , the knockdown of the PIPKI γ 2 variant did not show any obvious decrease in the PIP₂ level (Fig. 3*D*), indicating that

the effect of PIPKI γ 2 may result from localized changes in PIP₂ and PIP₃ levels in the vicinity of activated growth factor and adhesion receptors in the plasma membrane. Furthermore, kinase activity of PIPKI γ 2 was required for rescuing the defect on Akt activation in PIPKI γ 2 knockdown cells (Fig. 3, *E* and *F*). The effect of PIPKI γ 2 knockdown was more specific toward PI3K/Akt activation because the phosphorylation level of Erk1/2 was minimally affected in SUM159 and SUM1315 cells (Fig. 3*G*) (data not shown). Furthermore, the knockdown of PIPKI γ 5, an endosomal targeting variant of PIPKI γ , showed no effect on Akt activation when stimulated with ECM protein and FBS in the suspension condition (Fig. 3, *H* and *I*). These results are also consistent with the role of PIPKI γ 2 in PIP₂ synthesis required for the assembly of the adhesion complex at the plasma membrane (13, 30).

PIPKI γ 2 Overexpression Induces PI3K/Akt Activation and Oncogenic Growth—PIPKI γ is overexpressed in triple-negative breast cancers, but the expression of different splices variants remains undefined (26). The impact of overexpression of PIPKI γ variants on Akt activation was examined using MDA-MB-231 cells. In the adherent condition, the loss or overexpression of PIPKI γ 2 or other variants showed minimal effect on

Regulation of PI3K/Akt Signaling by PIPKI γ

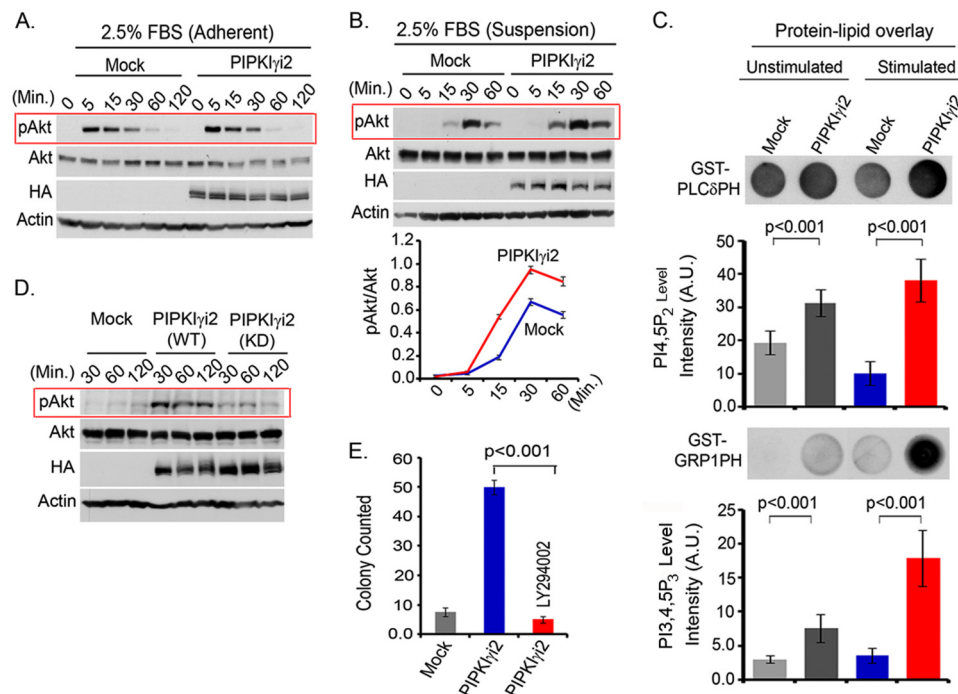


FIGURE 4. PIPKI γ 2 overexpression promotes PI3K/Akt signaling and oncogenic growth. A and B, mock or PIPKI γ 2-overexpressing cells were stimulated with FBS in the adherent (A) or suspension (B) condition as described above, and activated Akt was examined by immunoblotting. C, acidic lipids were isolated from an equal number of mock or PIPKI γ 2-overexpressing cells in both non-stimulated and stimulated conditions (10 min after stimulation with FBS and ECM protein) and spotted into the nitrocellulose membrane before incubating with purified GST-PLC δ PH or GST-GRP1PH proteins. HRP-labeled anti-GST antibody was used to detect the proteins bound to lipids in the membrane. A.U., arbitrary units. D, subconfluent culture of MDA-MB-231 cells overexpressing PIPKI γ 2 or its kinase-dead mutant was trypsinized and resuspended into the low FBS-containing medium. Cells were incubated in the suspension condition before harvesting the cells at different time points. The activated Akt was examined by immunoblotting. E, MDA-MB-231 cells overexpressing PIPKI γ 2 were cultured in soft agar in the presence or absence of the PI3K inhibitor LY294002 (10 μ M). The colonies formed were counted after 2–3 weeks. Results are represented as mean \pm S.D. (error bars) from three independent experiments.

Akt activation in response to FBS stimulation (Fig. 4A). However, in the suspension condition, PIPKI γ 2-overexpressing cells showed a modest increase in Akt activation in response to FBS and ECM protein stimulation of the cells (Fig. 4B) (data not shown). Analysis of phosphoinositide contents in the cells indicated a significantly increased PIP $_2$ level in PIPKI γ 2-overexpressing cells, which was further increased upon cell activation (Fig. 4C). Consistent with the increased level of activated Akt, we observed a significantly increased level of PIP $_3$ level in PIPKI γ 2-overexpressing cells. This indicates that PIP $_2$ generated by PIPKI γ 2 is associated with PIP $_3$ synthesis, leading to PI3K/Akt activation in the plasma membrane. Furthermore, PIPKI γ 2-overexpressing cells maintained the higher level of activated Akt following the disruption of the cell-matrix interaction and incubation in the suspension condition (Fig. 4D), which also corroborates with its anchorage-independent growth-promoting effect (18).

After demonstrating the role of PIPKI γ 2 in PI3K/Akt signaling, the role of PI3K/Akt signaling in oncogenic growth regulation by PIPKI γ 2 was investigated. The PI3K inhibitor, LY294002, was used to block PI3K/Akt signaling in MDA-MB-231 cells overexpressing PIPKI γ 2. As expected, the LY294002 compound significantly impaired the anchorage-independent growth induced by the PIPKI γ 2 expression (Fig. 4E). Anchorage-independent growth is one of the most commonly utilized *in vitro* methods to define cell transformation/oncogenic growth that directly correlate with *in vivo* tumor growth and metastasis (31, 32).

PIPKI γ 2 and Src Cooperate to Regulate PI3K/Akt Signaling—PIPKI γ 2 interacts with Src, and they collaboratively control anchorage-independent growth of tumor cells (18). Src is rapidly recruited to a wide spectrum of growth factor receptors and adhesion molecules and controls the oncogenic growth of tumor cells by regulating downstream signaling pathways, including PI3K/Akt signaling (33–35). Similarly, Src phosphorylation of PIPKI γ 2 regulates its interaction with the cytoskeletal protein, talin, which mediates its recruitment to the integrin-mediated adhesion complex (17, 18). The direct association of PIPKI γ 2 with talin and Src may facilitate its recruitment/assembly in the proximity of activated growth factor receptors and integrin-mediated adhesion complex in the plasma membrane to synthesize the spatial pool of PIP $_2$ for PIP $_3$ generation and Akt activation.

A number of studies demonstrate Src regulation of PI3K/Akt signaling via diverse mechanisms (36–42). Ectopic expression of Src promoted PI3K/Akt activation in MDA-MB-231 cells (Fig. 5A). Consistently, in the suspension condition, Src-expressing cells rapidly induced Akt activation in response to FBS, ECM protein, and EGF stimulation (Fig. 5, B–D). These cells also showed persistent Akt activation in a low FBS-containing medium (not shown). Furthermore, the inhibition of PI3K by LY294002 significantly impaired the anchorage-independent growth of Src-expressing cells (Fig. 5E), indicating the role of PI3K/Akt signaling in the oncogenic growth regulation of Src.

The role of Src and PIPKI γ 2 in Akt activation in PIPKI γ 2-overexpressing cells was investigated. Src interacts with PIPKI γ 2,

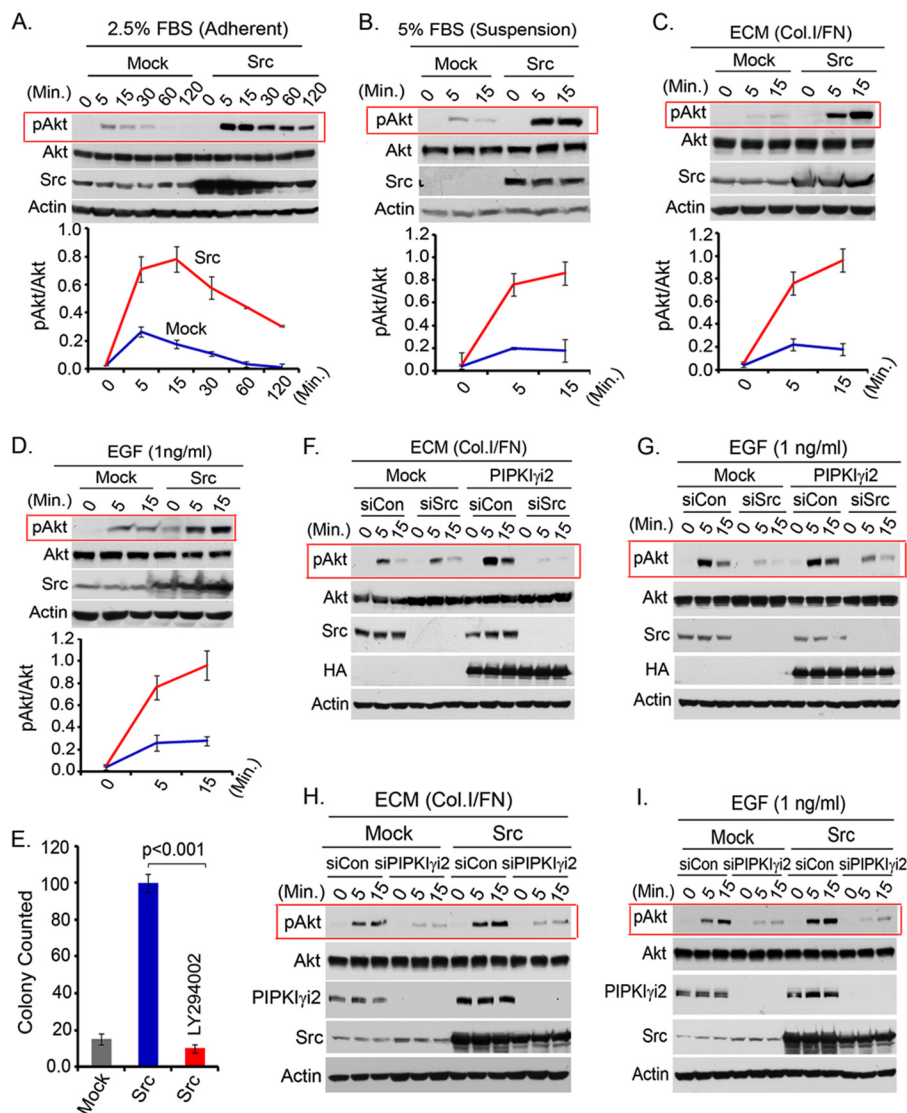


FIGURE 5. **PIPKI γ 2 and Src cooperate to regulate PI3K/Akt signaling.** A and B, mock or Src-expressing MDA-MB-231 cells after overnight serum starvation were stimulated with FBS in the adherent condition (A) or in the suspension condition (B) for different time periods. Cells were harvested, and activated Akt was examined by immunoblotting. C and D, mock or Src-expressing MDA-MB-231 cells were stimulated with ECM protein or EGF in the suspension condition before examining the activated Akt. E, MDA-MB-231 cells overexpressing Src were cultured in soft agar in the presence or absence of PI3K inhibitor, LY294002 (10 μ M). After 2–3 weeks, the colonies formed were counted. F and G, siRNA was used to knock down Src from PIPKI γ 2-overexpressing MDA-MB-231 cells. Then the effect of Src knockdown in Akt activation upon ECM and EGF stimulation in the suspension condition was examined as described above. H and I, PIPKI γ 2 was knocked down from Src-overexpressing cells using siRNA. Its effect on Akt activation in response to ECM protein and EGF stimulation of cells in the suspension condition was examined as described above. Results are represented as mean \pm S.D. (error bars) from three independent experiments.

and Src knockdown severely impaired the anchorage-independent growth of PIPKI γ 2-overexpressing cells (18). As shown in Fig. 5, F and G, the knockdown of Src abrogated Akt activation in PIPKI γ 2-overexpressing MDA-MB-231 cells. These results indicate that PIPKI γ /PIPKI γ 2 functions together with Src in the regulation of PI3K/Akt signaling, which supports their role in the organization of signaling complexes and their co-targeting to plasma membrane/adhesion complexes along with the PI3K enzyme.

After demonstrating the role of Src in PI3K/Akt signaling, siRNA was used to knockdown PIPKI γ 2 from Src-transfected cells, with the aim of determining whether Src recruits and/or collaborates with PIPKI γ 2 in the regulation of PI3K/Akt signaling. As shown in Fig. 5, H and I, PIPKI γ 2 knockdown significantly impaired Akt activation in Src-expressing cells stim-

ulated with ECM protein and growth factor (e.g. EGF). These results are also consistent with previous findings that PIPKI γ 2 regulated Src activation downstream of the growth factor receptor and integrins (18) and indicate the cooperative role of PIPKI γ 2 and Src in the regulation of both signaling and function.

PIPKI γ 2 Forms a Signaling Complex with Src and PI3K—To define a mechanism for PIPKI γ 2 regulation of PI3K/Akt signaling, we investigated whether the PIPKI γ 2 and PI3K enzymes are integrated into a complex upon cell stimulation. PIPKI enzymes often assemble into complexes, where the PIP₂ generated modulates an effector molecule (5, 6, 9). In this case, the proximity of PIPKI γ 2 and PI3K may facilitate the generation of the spatial pool of PIP₂ that is used by PI3K for generation of the PIP₃ that then activates Akt. PI3K utilizes SH2

Regulation of PI3K/Akt Signaling by PIPKI γ

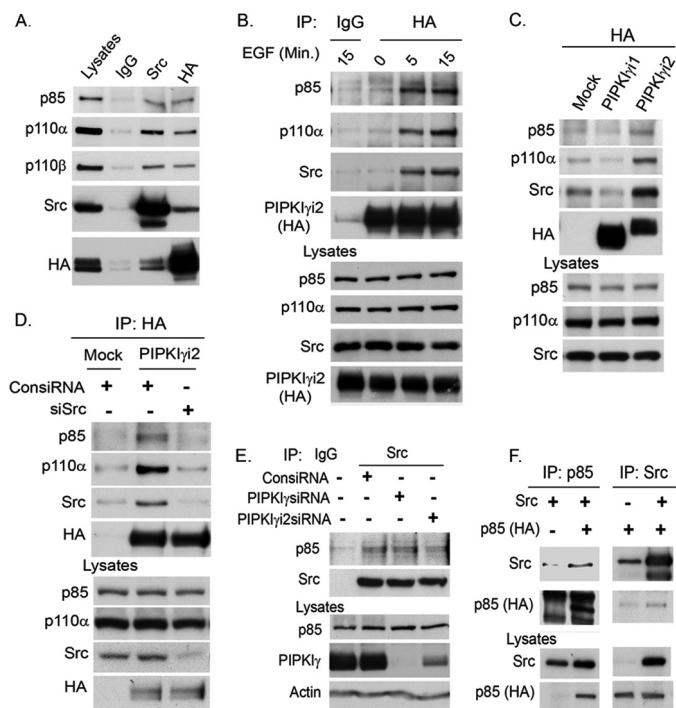


FIGURE 6. Src promotes the integration of PIPKI γ 2 and PI3K into a complex. A, PIPKI γ 2 or Src was immunoprecipitated from MDA-MB-231 cells co-expressing PIPKI γ 2 and Src. The coimmunoprecipitation of PI3K enzyme into the immunocomplex was examined by immunoblotting using the antibody specific for PI3K subunits (e.g. p85 and p110 α). B, MDA-MB-231 cells expressing PIPKI γ 2 were incubated in the suspension condition or stimulated with EGF and ECM for the indicated time periods. PIPKI γ 2 was immunoprecipitated, and coimmunoprecipitation of Src and PI3K into the immunocomplex was examined by immunoblotting. C, MDA-MB-231 cells expressing PIPKI γ 1 or PIPKI γ 2 were stimulated with EGF and ECM protein in the suspension condition as described above. Then PIPKI γ 1 or PIPKI γ 2 was immunoprecipitated to examine the coimmunoprecipitation of Src and PI3K into the immunocomplex. D, PIPKI γ 2 was immunoprecipitated from MDA-MB-231 cells transfected with siRNA for the knockdown of Src. Cells were stimulated as described above, and the coimmunoprecipitation of PI3K with PIPKI γ 2 in the immunocomplex was examined by immunoblotting. E, endogenous Src was immunoprecipitated from HEK293 cells transfected with siRNA for PIPKI γ or PIPKI γ 2 knockdown. The coimmunoprecipitation of PI3K with Src was examined by immunoblotting. F, HEK293 cells were co-transfected with Src and p85. Src was immunoprecipitated, and coimmunoprecipitation of p85 was examined by immunoblotting. Reciprocally, coimmunoprecipitation of Src with p85 was examined.

domains of the p85 adaptor subunit for its recruitment to tyrosine-phosphorylated motifs of activated receptors (2). Similarly, PIPKI γ 2 may utilize its direct interacting partners, Src and talin, in its recruitment to the proximity of activated growth factor receptors or adhesion complexes.

The incorporation of PIPKI γ 2, Src, and PI3K enzymes into a complex was examined in MDA-MB-231 cells ectopically expressing PIPKI γ 2 and Src (Fig. 6A). The assembly of these complexes was induced by activated growth factors and adhesion receptors, as demonstrated by the increased association of PIPKI γ 2 with Src and PI3K in the cells stimulated with EGF and ECM protein (fibronectin/collagen type I) (Fig. 6B). The interaction of PIPKI γ 2 with PI3K was specific because PIPKI γ 1, which is deficient in focal adhesion targeting and talin binding, did not integrate into the complex (Fig. 6C). Most significantly, Src knockdown severely impaired PIPKI γ 2 association with PI3K (Fig. 6D). The loss of PIPKI γ or PIPKI γ 2 did not affect the Src association with PI3K (Fig. 6E). The co-ex-

pression and coimmunoprecipitation study demonstrated Src association with PI3K (Fig. 6F) and is consistent with reported studies (38, 42). All of these results indicate that Src functions as a bridging molecule in incorporating both PIPKI γ 2 and PI3K into a complex. This provides the mechanism for the spatial generation of PIP $_2$ and PIP $_3$ for Akt activation upon growth factor and adhesion receptor activation.

Co-expression of PIPKI γ 2 and Src Induces PI3K/Akt Activation and Anchorage-independent Growth—Previously, the synergistic role for PIPKI γ 2 and Src in anchorage-independent growth regulation was demonstrated (18). Corroborating these results, co-expression of PIPKI γ 2 and Src induced a dramatic and synergistic increase in Akt activation in suspension culture (Fig. 7A). This was further validated by demonstrating the significantly increased PIP $_3$ level in the cells co-expressing PIPKI γ 2 and Src (Fig. 7A, bottom). Furthermore, the colonies developed by PIPKI γ 2- and Src-expressing cells in the soft agar also showed increased immunostaining for phosphorylated Akt (Fig. 7B). The PI3K/Akt signaling was required for increased anchorage-independent growth in PIPKI γ 2- and Src-expressing cells because the PI3K inhibitor LY294002 significantly abrogated colonies developed by these cells in soft agar (Fig. 7C), establishing the role for PI3K/Akt signaling in PIPKI γ 2 and Src regulation of oncogenic growth. Corroborating this, the knockdown of Src and PIPKI γ 2 impaired PI3K/Akt signaling in T47D and HCC1954 cells in suspension culture (data not shown). Furthermore, a kinase-dead mutant of PIPKI γ 2 (D253A,D316A) was severely impaired in inducing PI3K/Akt activation in concert with Src upon stimulation of cells with growth factor and ECM protein (Fig. 7, D and E). This indicates that kinase activity of PIPKI γ 2 and PIP $_2$ generation is required for PI3K/Akt signaling. The interaction between PIPKI γ 2 and Src was also required for induced Akt activation and oncogenic growth because the Src mutant deficient in PIPKI γ 2 binding was significantly impaired in inducing Akt activation (Fig. 7, F and G) and anchorage-independent growth in synergy with PIPKI γ 2, as indicated previously (18). This was further substantiated by the disruption of the PIPKI γ 2 and Src interaction by the C terminus of Src, which inhibited Akt activation induced by the co-expression of PIPKI γ 2 and Src (data not shown).

Src contains highly conserved basic residues at the N terminus that are potential anionic phospholipid binding sites, and these residues play a crucial role in Src recruitment and its activation in the plasma membrane (18, 43, 44). The Src mutant, Src (3K/3T) (lysine residues mutated to threonine) poorly induced Akt activation in response to FBS stimulation in the suspension condition (Fig. 8A), although it was competent in the adherent condition (Fig. 8B). Consistently, this mutant showed impaired Akt activation in synergy with PIPKI γ 2 in the suspension culture (Fig. 8C). This is consistent with the Src mutants' impaired ability to induce anchorage-independent growth in collaboration with PIPKI γ 2 (18). This indicates that Src association with the PIPKI γ 2 and PIP $_2$ generated also regulates Src function and is also consistent with our previous results that PIPKI γ 2 knockdown affects Src activation downstream of EGF receptors (18). With these results, we conclude that PIPKI γ 2 regulates PI3K/Akt signaling and oncogenic growth in coordination with the proto-oncogene Src.

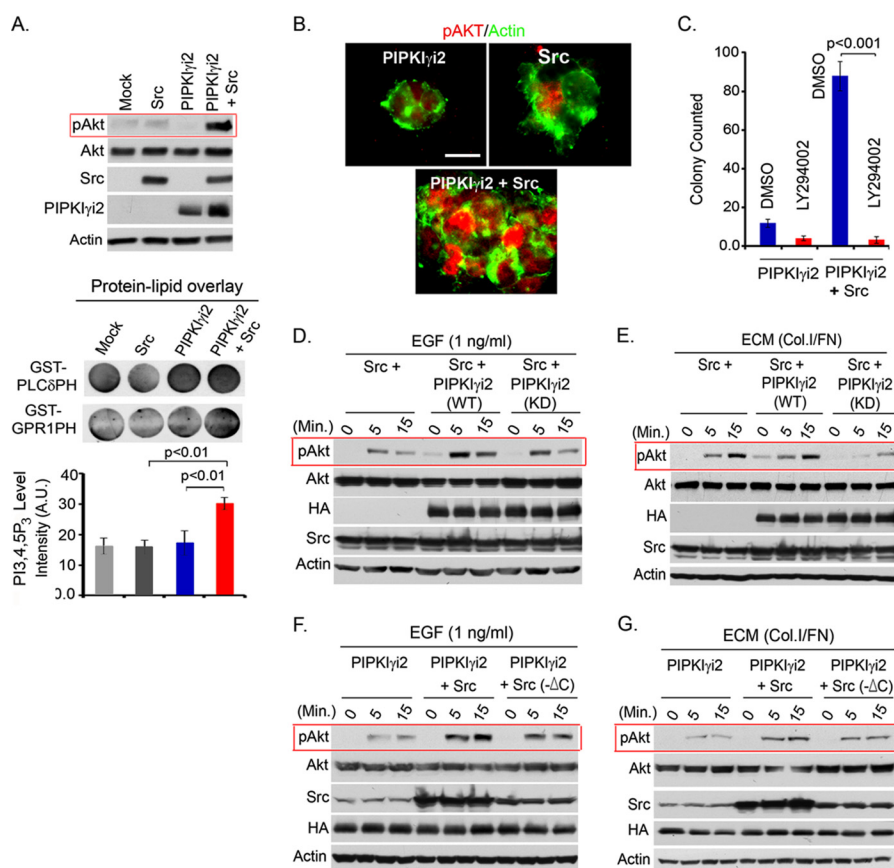


FIGURE 7. Co-expression of PIPKI γ 2 and Src induces Akt activation and oncogenic growth. *A*, PIPKI γ 2 and Src were individually expressed or co-expressed into MDA-MB-231 cells. These cells were resuspended and cultured in the suspension condition for 1–2 days before harvesting the cells. Activated Akt was examined by immunoblotting. Similarly, lipids were extracted from these cells after 4–5 h of incubation in the suspension condition as described above. Lipids were spotted into the nitrocellulose membrane before incubating with purified GST-PLC δ -PH or GST-GRP1-PH protein. HRP-labeled anti-GST antibody was used to detect the proteins bound to lipids in the membrane. A.U., arbitrary units. *B*, colony developed by MDA-MB-231 cells individually expressing PIPKI γ 2 and Src or co-expressing both of them was immunostained using antibody for activated Akt (red) and actin (green). Bar, 10 μ m. *C*, anchorage-independent growth of MDA-MB-231 cells co-expressing PIPKI γ 2 and Src was examined in the presence or absence of the PI3K inhibitor LY294002. Colonies formed were counted after 2 weeks of culture in soft agar as described previously. *D* and *E*, MDA-MB-231 cells expressing Src or co-expressing Src with PIPKI γ 2 or its kinase-dead mutant were stimulated with EGF and ECM protein in the suspension condition before examining the activated Akt by immunoblotting. *F* and *G*, MDA-MB-231 cells expressing PIPKI γ 2 or co-expressing PIPKI γ 2 with wild type Src or C-terminal deletion mutant, Src (- Δ C) deficient in PIPKI γ 2 binding were stimulated with EGF and ECM protein in the suspension condition before examining the activated Akt.

Discussion

PI3K/Akt signaling is one of the most commonly deregulated signaling pathways in cancer and plays a key role in oncogenic growth signaling (2, 3). Herein, we illustrated the mechanism by which cancer cells can activate and sustain the PI3K/Akt signaling downstream of growth factor and adhesion receptors in the suspension condition. PIPKI γ and its focal adhesion targeting variant, PIPKI γ 2, appeared to provide PIP₂ spatially for PIP₃ generation and the activation of PI3K/Akt signaling downstream of activated growth factor and adhesion receptors. This indicates that cancer cells maintain their vital cellular signaling, such as PI3K/Akt, irrespective of adherent or suspension condition. This may provide the mechanism by which metastasizing and circulating tumor cells can sustain cellular signaling for their survival and growth.

PIP₂ is utilized by PI3K and PLC enzymes to generate the second messengers: PIP₃, inositol triphosphate, and diacylglycerol, in response to growth factor and adhesion receptor activation (45–47). Despite these key functions, the content of PIP₂ is maintained relatively constant (5, 6, 9). This indicates that PIP₂ synthesis may be channeled for use as a mes-

senger or a precursor for messenger generation (5, 6, 46). Here we show that the PIP₂-synthesizing enzyme PIPKI γ 2 regulated by Src is integrated into a PI3K complex that is required for the activation of PI3K/Akt signaling. The PI3K-mediated conversion of PIP₂ into PIP₃ is required for the activation of Akt. Our results support a model where PIPKI γ 2-generated PIP₂ is utilized by PI3K to synthesize PIP₃ and activate Akt. The PI3K/Akt signaling nexuses have roles in oncogenesis (2), and the PIPKI γ 2 is required for this pathway in the suspension condition and for anchorage-independent growth of the tumor cells (18). Among different isoforms of PIPKI enzymes, the knockdown of PIPKI γ , which is overexpressed in breast cancer and correlates with poor patient prognosis (26), showed specificity for PI3K/Akt signaling in the suspension condition. The focal adhesion targeting variant, PIPKI γ 2, recapitulated the outcome of PIPKI γ knockdown on Akt activation.

The assembly of the signaling complex is the primary event in the initiation and transduction of intracellular signals (48, 49). Many signaling proteins are targeted to the activated growth factor receptors and integrins in the plasma membrane via their

Regulation of PI3K/Akt Signaling by PIPKI γ

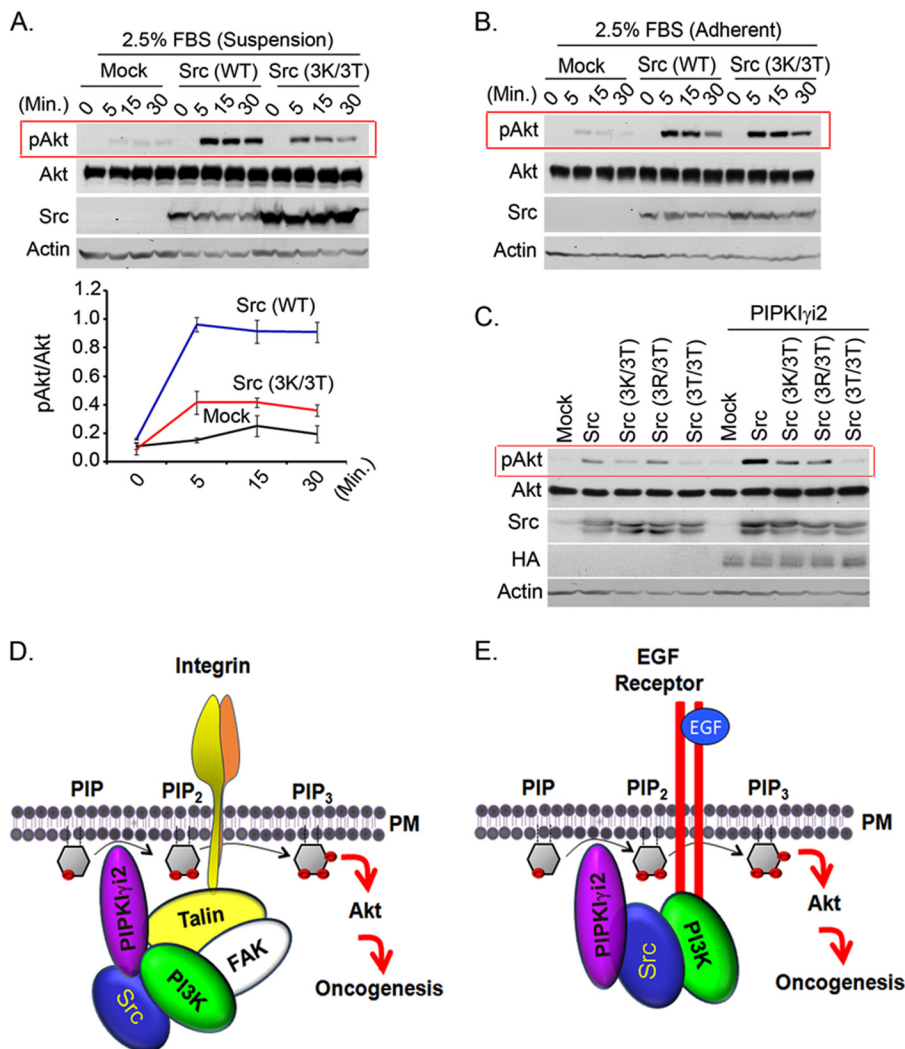


FIGURE 8. Highly conserved basic amino acids residues in the N terminus of Src are required for Akt activation in synergy with PIPKI γ 2. *A* and *B*, MDA-MB-231 cells expressing wild type or its mutant form of Src were stimulated in suspension (*A*) or adherent condition (*B*) with FBS before examining the activated Akt by immunoblotting. *C*, NIH3T3 cells co-expressing Src or its mutant form with PIPKI γ 2 were cultured in suspension condition for 1–2 days before examining the activated Akt by immunoblotting. *D* and *E*, schematic diagram depicting the role of PIPKI γ 2 and Src in regulation of PI3K/Akt signaling. PIPKI γ 2 is recruited at the vicinity of activated integrins via talin, its direct interacting partner, whereas PI3K can utilize focal adhesion kinase for its recruitment at the adhesion complex upon integrin activation. Simultaneous recruitment of PIP₂- and PIP₃-synthesizing enzyme may provide the spatial pool of PIP₂ and PIP₃ required for Akt recruitment to plasma membrane and its subsequent activation, which supports oncogenic growth of tumor cells. Similarly, PIPKI γ 2 is recruited in proximity to activated growth factor via Src, which directly interacts with phosphorylated tyrosine motifs of activated growth factor receptors (*E*). PI3K recognizes distinct tyrosine motifs of activated growth factor receptors. Thus, PIPKI γ 2 represents the candidate molecule to contribute the spatial pool of PIP₂ required for PIP₃ generation and Akt activation upon activation of growth factor receptors and integrins, which promotes oncogenic growth signaling in tumor cells.

SH2 or phosphotyrosine binding domain or similar domains (48, 49). The PI3K enzyme is rapidly recruited to the plasma membrane by utilizing the SH2 domain-mediated interaction of its adaptor subunit (*e.g.* p85) with phosphotyrosine residues of activated growth factor receptors (2, 3). Upon cell stimulation, PIPKI γ 2 specifically associated with Src and the PI3K enzyme; Src facilitated the assembly of the complex of PIPKI γ 2 and PI3K as Src knockdown impaired PI3K/Akt activation in PIPKI γ 2-expressing cells as well as PIPKI γ 2 assembly into the complex. Further, PIPKI γ 2 (of the six different PIPKI γ variants) is targeted to the cell-ECM interface via interaction with the cytoskeletal protein, talin (13, 30), positioning PIPKI γ 2 as a key enzyme synthesizing PIP₂ in response to cell stimulation with ECM proteins through integrin activation. These concepts are supported by (i) impaired Akt activation by PIPKI γ 2

knockdown, (ii) increased PIP₂ and PIP₃ levels in PIPKI γ 2-overexpressing cells, and (iii) specific incorporation of PIPKI γ 2 with the PI3K enzyme upon cell stimulation with growth factors and ECM protein. This supports a model in which the PIPKI γ 2-generated pool of PIP₂ is utilized by the PI3K to generate PIP₃ for Akt activation (Fig. 8, *D* and *E*). Phosphorylation of tyrosine residues in the C terminus of PIPKI γ 2 by Src (17) could also regulate interaction between PIPKI γ 2 and PI3K enzyme, thus promoting the co-targeting of both PIP₂- and PIP₃-generating enzymes to the plasma membrane to facilitate PI3K/Akt signaling. These interactions may define the fundamental basis of PI3K/Akt regulation by the PIP₂-synthesizing enzyme in response to some cell stimuli.

Src, a cytosolic tyrosine kinase, is activated downstream of many growth factor receptors, cytokine receptors, and adhe-

sion receptors (34, 50, 51). By virtue of its SH2 and SH3 domains, Src interacts with different signaling molecules and modulates their functionality (34, 51). Along with its own defined sets of downstream signaling cascades, Src regulates PI3K/Akt signaling by different mechanisms. Some of these include phosphorylation of adaptor subunits of PI3K (e.g. Tyr-688 on p85) and alleviation of inhibitory constraints to its catalytic subunit, p110 α (39); co-targeting with PI3K to activated growth factor receptors (38); and activation of Ras and inactivation of PTEN (37), a negative regulator of PI3K/Akt signaling. Here, we show that Src facilitates the assembly of the PIP₂-synthesizing enzyme, PIPKI γ 2, in the proximity of activated receptors and adhesion complex to support PI3K/Akt activation required for the oncogenic growth of tumor cells. This is consistent with many studies indicating that PI3K/Akt activation is the cumulative outcome of several pathways (2).

With these results, we conclude that PIPKI γ 2 coordinates with Src and possibly talin for spatial assembly with PI3K in the proximity of activated growth factor receptors and adhesion complexes for PIP₂ and PIP₃ synthesis for Akt activation even in the suspension condition (Fig. 8, D and E). This could represent a signaling nexus required for the survival and growth of metastasizing and circulating tumor cells *in vivo* and is also consistent with reported studies that have demonstrated the role of PIPKI γ /PIPKI γ 2 in oncogenic growth and tumor metastasis (18, 19, 26). Because generation of PIP₃ by PI3K and Akt activation has significant therapeutic implications for cancers, targeting PIPKI γ /PIPKI γ 2 could pave the way for controlling the PI3K/Akt signaling nexus in metastasizing and circulating tumor cells *in vivo*.

Author Contributions—N. T. and R. A. A. conceived the idea. N. T., S. C., X. T., and T. W. performed the experiments. N. T. and R. A. A. wrote the manuscript.

References

- Croce, C. M. (2008) Oncogenes and cancer. *N. Engl. J. Med.* **358**, 502–511
- Liu, P., Cheng, H., Roberts, T. M., and Zhao, J. J. (2009) Targeting the phosphoinositide 3-kinase pathway in cancer. *Nat. Rev. Drug Discov.* **8**, 627–644
- Bunney, T. D., and Katan, M. (2010) Phosphoinositide signalling in cancer: beyond PI3K and PTEN. *Nat. Rev. Cancer* **10**, 342–352
- Samuels, Y., Diaz, L. A., Jr., Schmidt-Kittler, O., Cummins, J. M., Delong, L., Cheong, I., Rago, C., Huso, D. L., Lengauer, C., Kinzler, K. W., Vogelstein, B., and Velculescu, V. E. (2005) Mutant PIK3CA promotes cell growth and invasion of human cancer cells. *Cancer Cell* **7**, 561–567
- Choi, S., Thapa, N., Tan, X., Hedman, A. C., and Anderson, R. A. (2015) PIP kinases define PI4,5P signaling specificity by association with effectors. *Biochim. Biophys. Acta* **1851**, 711–723
- Sun, Y., Thapa, N., Hedman, A. C., and Anderson, R. A. (2013) Phosphatidylinositol 4,5-bisphosphate: targeted production and signaling. *Bioessays* **35**, 513–522
- Divecha, N. (2010) Lipid kinases: charging PtdIns(4,5)P₂ synthesis. *Curr. Biol.* **20**, R154–R157
- Balla, T. (2013) Phosphoinositides: tiny lipids with giant impact on cell regulation. *Physiol. Rev.* **93**, 1019–1137
- Heck, J. N., Mellman, D. L., Ling, K., Sun, Y., Wagoner, M. P., Schill, N. J., and Anderson, R. A. (2007) A conspicuous connection: structure defines function for the phosphatidylinositol-phosphate kinase family. *Crit. Rev. Biochem. Mol. Biol.* **42**, 15–39
- Barlow, C. A., Laishram, R. S., and Anderson, R. A. (2010) Nuclear phosphoinositides: a signaling enigma wrapped in a compartmental conundrum. *Trends Cell Biol.* **20**, 25–35
- Schill, N. J., and Anderson, R. A. (2009) Two novel phosphatidylinositol-4-phosphate 5-kinase type I γ splice variants expressed in human cells display distinctive cellular targeting. *Biochem. J.* **422**, 473–482
- Xia, Y., Irvine, R. F., and Giudici, M. L. (2011) Phosphatidylinositol 4-phosphate 5-kinase I γ v6, a new splice variant found in rodents and humans. *Biochem. Biophys. Res. Commun.* **411**, 416–420
- Ling, K., Doughman, R. L., Firestone, A. J., Bunce, M. W., and Anderson, R. A. (2002) Type I γ phosphatidylinositol phosphate kinase targets and regulates focal adhesions. *Nature* **420**, 89–93
- Li, X., Zhou, Q., Sunkara, M., Kutys, M. L., Wu, Z., Rychahou, P., Morris, A. J., Zhu, H., Evers, B. M., and Huang, C. (2013) Ubiquitylation of phosphatidylinositol 4-phosphate 5-kinase type I γ by HECTD1 regulates focal adhesion dynamics and cell migration. *J. Cell Sci.* **126**, 2617–2628
- Wu, Z., Li, X., Sunkara, M., Spearman, H., Morris, A. J., and Huang, C. (2011) PIPKI γ regulates focal adhesion dynamics and colon cancer cell invasion. *PLoS One* **6**, e24775
- Sun, Y., Hedman, A. C., Tan, X., Schill, N. J., and Anderson, R. A. (2013) Endosomal type I γ PIP 5-kinase controls EGF receptor lysosomal sorting. *Dev. Cell* **25**, 144–155
- Ling, K., Doughman, R. L., Iyer, V. V., Firestone, A. J., Bairstow, S. F., Mosher, D. F., Schaller, M. D., and Anderson, R. A. (2003) Tyrosine phosphorylation of type I γ phosphatidylinositol phosphate kinase by Src regulates an integrin-talin switch. *J. Cell Biol.* **163**, 1339–1349
- Thapa, N., Choi, S., Hedman, A., Tan, X., and Anderson, R. A. (2013) Phosphatidylinositol phosphate 5-kinase I γ 2 in association with Src controls anchorage-independent growth of tumor cells. *J. Biol. Chem.* **288**, 34707–34718
- Chen, C., Wang, X., Xiong, X., Liu, Q., Huang, Y., Xu, Q., Hu, J., Ge, G., and Ling, K. (2014) Targeting type I γ phosphatidylinositol phosphate kinase inhibits breast cancer metastasis. *Oncogene* **10.1038/onc.2014.393**
- Chen, H. C., Appeddu, P. A., Isoda, H., and Guan, J. L. (1996) Phosphorylation of tyrosine 397 in focal adhesion kinase is required for binding phosphatidylinositol 3-kinase. *J. Biol. Chem.* **271**, 26329–26334
- Ling, K., Bairstow, S. F., Carbonara, C., Turbin, D. A., Huntsman, D. G., and Anderson, R. A. (2007) Type I γ phosphatidylinositol phosphate kinase modulates adherens junction and E-cadherin trafficking via a direct interaction with μ 1B adaptin. *J. Cell Biol.* **176**, 343–353
- Thapa, N., Sun, Y., Schrap, M., Choi, S., Ling, K., and Anderson, R. A. (2012) Phosphoinositide signaling regulates the exocyst complex and polarized integrin trafficking in directionally migrating cells. *Dev. Cell* **22**, 116–130
- Fayngerts, S. A., Wu, J., Oxley, C. L., Liu, X., Vourekas, A., Cathopoulos, T., Wang, Z., Cui, J., Liu, S., Sun, H., Lemmon, M. A., Zhang, L., Shi, Y., and Chen, Y. H. (2014) TIPE3 is the transfer protein of lipid second messengers that promote cancer. *Cancer Cell* **26**, 465–478
- Plaks, V., Koopman, C. D., and Werb, Z. (2013) Cancer: circulating tumor cells. *Science* **341**, 1186–1188
- Kang, Y., and Pantel, K. (2013) Tumor cell dissemination: emerging biological insights from animal models and cancer patients. *Cancer Cell* **23**, 573–581
- Sun, Y., Turbin, D. A., Ling, K., Thapa, N., Leung, S., Huntsman, D. G., and Anderson, R. A. (2010) Type I γ phosphatidylinositol phosphate kinase modulates invasion and proliferation and its expression correlates with poor prognosis in breast cancer. *Breast Cancer Res.* **12**, R6
- Lehmann, B. D., Bauer, J. A., Chen, X., Sanders, M. E., Chakravarthy, A. B., Shtyr, Y., and Pietenpol, J. A. (2011) Identification of human triple-negative breast cancer subtypes and preclinical models for selection of targeted therapies. *J. Clin. Invest.* **121**, 2750–2767
- Aksamitiene, E., Kholodenko, B. N., Kolch, W., Hoek, J. B., and Kiyatkin, A. (2010) PI3K/Akt-sensitive MEK-independent compensatory circuit of ERK activation in ER-positive PI3K-mutant T47D breast cancer cells. *Cell. Signal.* **22**, 1369–1378
- Gao, X., Lowry, P. R., Zhou, X., Depry, C., Wei, Z., Wong, G. W., and Zhang, J. (2011) PI3K/Akt signaling requires spatial compartmentalization in plasma membrane microdomains. *Proc. Natl. Acad. Sci. U.S.A.* **108**, 14509–14514

Regulation of PI3K/Akt Signaling by PIPKI γ

30. Legate, K. R., Takahashi, S., Bonakdar, N., Fabry, B., Boettiger, D., Zent, R., and Fässler, R. (2011) Integrin adhesion and force coupling are independently regulated by localized PtdIns(4,5)2 synthesis. *EMBO J.* **30**, 4539–4553
31. Mori, S., Chang, J. T., Andrechek, E. R., Matsumura, N., Baba, T., Yao, G., Kim, J. W., Gatz, M., Murphy, S., and Nevins, J. R. (2009) Anchorage-independent cell growth signature identifies tumors with metastatic potential. *Oncogene* **28**, 2796–2805
32. Simpson, C. D., Anyiwe, K., and Schimmer, A. D. (2008) Anoikis resistance and tumor metastasis. *Cancer Lett.* **272**, 177–185
33. Ishizawa, R., and Parsons, S. J. (2004) c-Src and cooperating partners in human cancer. *Cancer Cell* **6**, 209–214
34. Yeatman, T. J. (2004) A renaissance for SRC. *Nat. Rev. Cancer* **4**, 470–480
35. Loza-Coll, M. A., Perera, S., Shi, W., and Filmus, J. (2005) A transient increase in the activity of Src-family kinases induced by cell detachment delays anoikis of intestinal epithelial cells. *Oncogene* **24**, 1727–1737
36. Jin, W., Yun, C., Hobbie, A., Martin, M. J., Sorensen, P. H., and Kim, S. J. (2007) Cellular transformation and activation of the phosphoinositide-3-kinase-Akt cascade by the ETV6-NTRK3 chimeric tyrosine kinase requires c-Src. *Cancer Res.* **67**, 3192–3200
37. Lu, Y., Yu, Q., Liu, J. H., Zhang, J., Wang, H., Koul, D., McMurray, J. S., Fang, X., Yung, W. K., Siminovitch, K. A., and Mills, G. B. (2003) Src family protein-tyrosine kinases alter the function of PTEN to regulate phosphatidylinositol 3-kinase/AKT cascades. *J. Biol. Chem.* **278**, 40057–40066
38. Fincham, V. J., Brunton, V. G., and Frame, M. C. (2000) The SH3 domain directs actomyosin-dependent targeting of v-Src to focal adhesions via phosphatidylinositol 3-kinase. *Mol. Cell. Biol.* **20**, 6518–6536
39. Cuevas, B. D., Lu, Y., Mao, M., Zhang, J., LaPushin, R., Siminovitch, K., and Mills, G. B. (2001) Tyrosine phosphorylation of p85 relieves its inhibitory activity on phosphatidylinositol 3-kinase. *J. Biol. Chem.* **276**, 27455–27461
40. Zhang, X. H., Wang, Q., Gerald, W., Hudis, C. A., Norton, L., Smid, M., Foekens, J. A., and Massagué, J. (2009) Latent bone metastasis in breast cancer tied to Src-dependent survival signals. *Cancer Cell* **16**, 67–78
41. Arcaro, A., Aubert, M., Espinos, del Hierro, M. E., Khanzada, U. K., Angelidou, S., Tetley, T. D., Bittermann, A. G., Frame, M. C., and Seckl, M. J. (2007) Critical role for lipid raft-associated Src kinases in activation of PI3K-Akt signalling. *Cell. Signal.* **19**, 1081–1092
42. Nozu, F., Owyang, C., and Tsunoda, Y. (2000) Involvement of phosphoinositide 3-kinase and its association with pp60src in cholecystokinin-stimulated pancreatic acinar cells. *Eur. J. Cell Biol.* **79**, 803–809
43. Sigal, C. T., Zhou, W., Buser, C. A., McLaughlin, S., and Resh, M. D. (1994) Amino-terminal basic residues of Src mediate membrane binding through electrostatic interaction with acidic phospholipids. *Proc. Natl. Acad. Sci. U.S.A.* **91**, 12253–12257
44. Silverman, L., and Resh, M. D. (1992) Lysine residues form an integral component of a novel NH₂-terminal membrane targeting motif for myristylated pp60v-src. *J. Cell Biol.* **119**, 415–425
45. Toker, A. (1998) The synthesis and cellular roles of phosphatidylinositol 4,5-bisphosphate. *Curr. Opin. Cell Biol.* **10**, 254–261
46. van den Bout, I., and Divecha, N. (2009) PIP5K-driven PtdIns(4,5)P₂ synthesis: regulation and cellular functions. *J. Cell Sci.* **122**, 3837–3850
47. Di Paolo, G., and De Camilli, P. (2006) Phosphoinositides in cell regulation and membrane dynamics. *Nature* **443**, 651–657
48. Lemmon, M. A. (2008) Membrane recognition by phospholipid-binding domains. *Nat. Rev. Mol. Cell Biol.* **9**, 99–111
49. Schlessinger, J., and Lemmon, M. A. (2003) SH2 and PTB domains in tyrosine kinase signaling. *Sci. STKE* **2003**, RE12
50. Aleshin, A., and Finn, R. S. (2010) SRC: a century of science brought to the clinic. *Neoplasia* **12**, 599–607
51. Parsons, S. J., and Parsons, J. T. (2004) Src family kinases, key regulators of signal transduction. *Oncogene* **23**, 7906–7909