

Expression of PD-1 by CD4⁺CD25⁺CD127^{low} Treg cells in the peripheral blood of lung cancer patients

AnYuan Zhong
Xue Pan
MinHua Shi

Department of Respiratory Diseases,
the Second Affiliated Hospital of
Soochow University, Suzhou, People's
Republic of China

Dear editor

Lung cancer is the most commonly diagnosed cancer and the leading cause of cancer death worldwide,¹ with the majority of patients presenting with advanced disease.² Treg cells diminish the activation and function of lymphocytes via cell-cell contact and secretion of soluble mediators.³ PD-1 is expressed on the surface of activated T and B cells and regulates their activation and proliferation.⁴ PD-L1 binds to the PD-1 receptor, leading to, among other responses, negative regulation of immune activity. Both Tregs and the PD-1/PD-L1 pathway play important roles in lung cancer pathogenesis;^{5,6} however, the association between these two factors remains poorly understood. Here, we examined PD-1 expression on Tregs, and compared these results with established clinical indicators of lung cancer. These analyses revealed significant expression of PD-1 on Tregs in lung cancer, which may be used to inform clinical diagnoses.

PD-1 expression was studied on CD4⁺CD25⁺CD127^{low} Tregs isolated from peripheral blood mononuclear cells by flow cytometry. Twenty-two primary lung cancer patients and 25 healthy volunteers were recruited from the Second Affiliated Hospital of Soochow University (Suzhou, People's Republic of China). Lung cancer patients had a nearly 2-fold increase in the number of circulating Tregs relative to healthy controls (7.66%±2.25% versus [vs] 3.76%±1.06%, respectively; $P<0.05$). The levels of PD-1 expression by CD4⁺CD25⁺CD127^{low} Tregs were also higher in lung cancer samples compared to controls (46.01%±11.33% vs 33.34%±13.54%, respectively). Significant differences in both CD4⁺CD25⁺CD127^{low} Treg abundance (6.29%±1.18% vs 10.06%±1.58%; $P<0.01$) and Treg PD-1 expression (41.85%±6.1% vs 56.57%±12.52%; $P<0.05$) were observed between clinical stages III and IV, respectively (Figure 1); no differences were seen among other pathologic subtypes, or in terms of lymphatic metastasis.

Tregs play a critical role in a variety of immunologic processes, including self-tolerance, anti-tumor immune responses, and transplantation.^{7,8} Our study revealed a significant increase in the number of CD4⁺CD25⁺CD127^{low} Tregs in patients with lung cancer, relative to healthy controls. While the mechanisms underlying the increase in lung cancer-associated Tregs are not known, the overall increase in the number of immunosuppressive immune cells present in these patients may play an important role in both the development and progression of lung cancer.^{9,10}

Costimulatory molecule receptors interacting with their corresponding ligand mediate both positive and negative costimulatory signals, which regulate immune

Correspondence: MinHua Shi
Department of Respiratory Diseases, the
Second Affiliated Hospital of Soochow
University, 1055 Sanxiang Road, Suzhou
215004, People's Republic of China
Email shiminhua@163.com

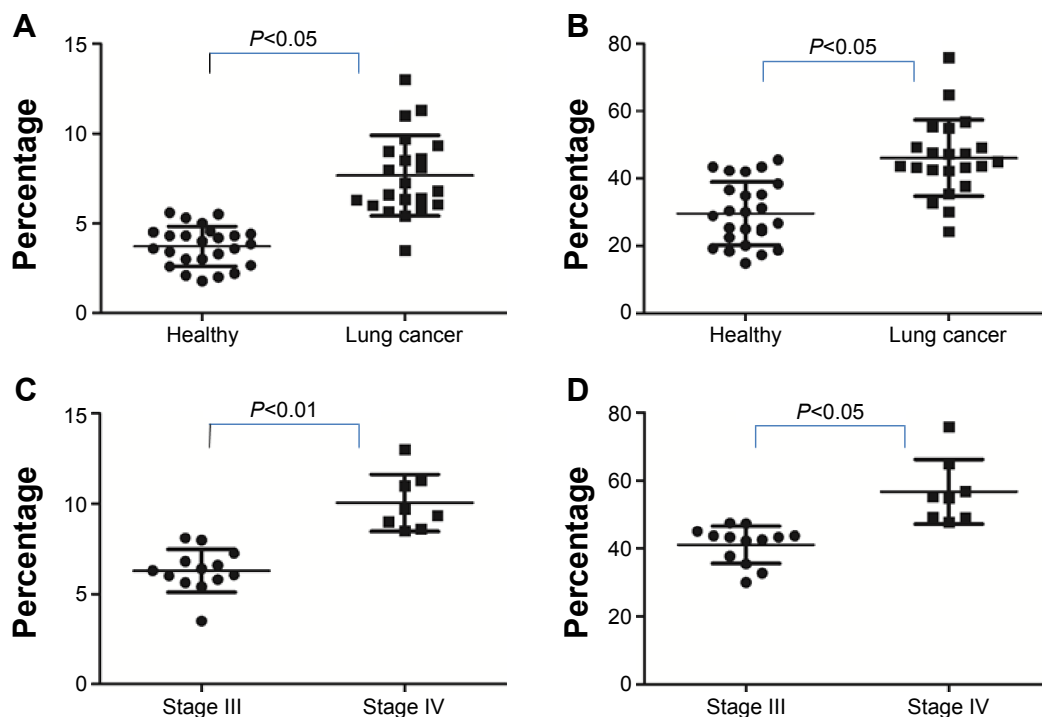


Figure 1 Expression of Tregs PD-1 on Tregs in peripheral blood.

Notes: (A) Expression of Tregs in peripheral blood in lung cancer patients and healthy volunteers. (B) Expression of PD-1 on Tregs in lung cancer patients and healthy volunteers. (C) Expression Tregs in clinical stages III and IV lung cancer patients. (D) Expression of PD-1 on Tregs in clinical stages III and IV lung cancer patients.

cell activation, including the activation and proliferation of T cells, cytokine production, apoptosis, cell survival, and cytotoxicity.^{11–13} PD-1 belongs to the CD28 family of receptors, and is expressed on activated T, B, and myeloid cells.⁴ PD-1 and its ligand PD-L1 deliver inhibitory signals that regulate the balance between effector T cell activation and immune-mediated tissue damage.^{11,12} In addition, the proliferation and immune inhibitory activity of Tregs is directly related to the expression of costimulatory molecules on the cell surface.¹⁴ Conflicting reports on the role of PD-1 on Treg function have suggested that PD-1–PD-L1 ligation on Tregs promotes Treg stability and expansion,^{15–18} while others have suggested that this pathway inhibits Treg expansion and function.^{19,20} Our study revealed a distinct increase in Treg number and Treg PD-1 expression in patients with lung cancer, suggesting that the PD-1/PD-L1 pathway may play a role in Treg induction and is associated with impaired adaptive immunity. From these results, we hypothesize that the over-expression of PD-1 on Tregs and/or the increase in Treg number may participate in the immune inhibitory state of lung cancer patients. The cross-talk between Treg cells and PD-1/PD-L1-induced inhibition in lung cancer warrants further exploration for lung cancer associated immune pathogenesis.

Acknowledgments

Our studies were supported by grants from the Natural Science Foundation of China (no 81272610).

Authors' contributions

Both Anyuan Zhong and Xue Pan contributed equally to this letter. This letter has been approved by all authors for publication. All authors contributed toward data analysis, drafting, and revising the letter.

Disclosure

The authors have no conflicts of interest to declare.

References

1. Siegel R, Naishadham D, Jemal A. Cancer statistics, 2013. *CA Cancer J Clin.* 2013;63(1):11–30.
2. Siegel R, DeSantis C, Virgo K, et al. Cancer treatment and survivorship statistics, 2012. *CA Cancer J Clin.* 2012;62(4):220–241.
3. Sakaguchi S. Naturally arising Foxp3-expressing CD25+CD4+ regulatory T cells in immunological tolerance to self and non-self. *Nat Immunol.* 2005;6(4):345–352.
4. Agata Y, Kawasaki A, Nishimura H, et al. Expression of the PD-1 antigen on the surface of stimulated mouse T and B lymphocytes. *Int Immunol.* 1996;8(5):765–772.
5. Pircher A, Gernerth G, Amann A, et al. Neoadjuvant chemo-immunotherapy modifies CD4(+)CD25(+) regulatory T cells (Treg) in non-small cell lung cancer (NSCLC) patients. *Lung Cancer.* 2014;85(1):81–87.
6. Reck M, Paz-Ares L. Immunologic Checkpoint Blockade in Lung Cancer. *Semin Oncol.* 2015;42(3):402–417.

7. Sakaguchi S. Regulatory T cells: key controllers of immunologic self-tolerance. *Cell*. 2000;101(5):455–458.
8. Morse M, Clay TM, Mosca P, Lyerly HK. Immunoregulatory T cells in cancer immunotherapy. *Expert Opin Biol Ther*. 2002;2(8):827–834.
9. Zhang D, Chen Z, Wang DC, Wang X. Regulatory T cells and potential immunotherapeutic targets in lung cancer. *Cancer Metastasis Rev*. Epub 2015 May 12.
10. Domagala-Kulawik J. The role of the immune system in non-small cell lung carcinoma and potential for therapeutic intervention. *Transl Lung Cancer Res*. 2015;4(2):177–190.
11. Sharpe AH, Wherry EJ, Ahmed R, Freeman GJ. The function of programmed cell death 1 and its ligands in regulating autoimmunity and infection. *Nat Immunol*. 2007;8(3):239–245.
12. Keir ME, Francisco LM, Sharpe AH. PD-1 and its ligands in T-cell immunity. *Curr Opin Immunol*. 2007;19(3):309–314.
13. Day CL, Kaufmann DE, Kiepiela P, et al. PD-1 expression on HIV-specific T cells is associated with T-cell exhaustion and disease progression. *Nature*. 2006;443(7109):350–354.
14. Kitazawa Y, Fujino M, Wang Q, et al. Involvement of the programmed death-1/programmed death-1 ligand pathway in CD4⁺CD25⁺ regulatory T-cell activity to suppress alloimmune responses. *Transplantation*. 2007;83(6):774–782.
15. Francisco LM, Salinas VH, Brown KE, et al. PD-L1 regulates the development, maintenance, and function of induced regulatory T cells. *J Exp Med*. 2009;206(13):3015–3029.
16. Periasamy S, Dhiman R, Barnes PF, et al. Programmed death 1 and cytokine inducible SH2-containing protein dependent expansion of regulatory T cells upon stimulation With Mycobacterium tuberculosis. *J Infect Dis*. 2011;203(9):1256–1263.
17. Zhou Q, Munger ME, Highfill SL, et al. Program death-1 signaling and regulatory T cells collaborate to resist the function of adoptively transferred cytotoxic T lymphocytes in advanced acute myeloid leukemia. *Blood*. 2010;116(14):2484–2493.
18. Wang HY, Lee DA, Peng G, et al. Tumor-specific human CD4⁺ regulatory T cells and their ligands: implications for immunotherapy. *Immunity*. 2004;20(1):107–118.
19. Franceschini D, Paroli M, Francavilla V, et al. PD-L1 negatively regulates CD4⁺CD25⁺Foxp3⁺ Tregs by limiting STAT-5 phosphorylation in patients chronically infected with HCV. *J Clin Invest*. 2009;119(3):551–564.
20. Karim R, Jordanova ES, Piersma SJ, et al. Tumor-expressed B7-H1 and B7-DC in relation to PD-1⁺ T-cell infiltration and survival of patients with cervical carcinoma. *Clin Cancer Res*. 2009;15(20):6341–6347.

Dove Medical Press encourages responsible, free and frank academic debate. The content of the OncoTargets and Therapy 'letters to the editor' section does not necessarily represent the views of Dove Medical Press, its officers, agents, employees, related entities or the OncoTargets and Therapy editors. While all reasonable steps have been taken to confirm the content of each letter, Dove Medical Press accepts no liability in respect of the content of any letter, nor is it responsible for the content and accuracy of any letter to the editor.

OncoTargets and Therapy

Publish your work in this journal

OncoTargets and Therapy is an international, peer-reviewed, open access journal focusing on the pathological basis of all cancers, potential targets for therapy and treatment protocols employed to improve the management of cancer patients. The journal also focuses on the impact of management programs and new therapeutic agents and protocols on

Submit your manuscript here: <http://www.dovepress.com/oncotargets-and-therapy-journal>

patient perspectives such as quality of life, adherence and satisfaction. The manuscript management system is completely online and includes a very quick and fair peer-review system, which is all easy to use. Visit <http://www.dovepress.com/testimonials.php> to read real quotes from published authors.

Dovepress