

Cancer Biology

# Glycosyltransferases involved in the synthesis of MUC-associated metastasis-promoting selectin ligands

Vishwanath B Chachadi<sup>2,3,5</sup>, Ganapati Bhat<sup>2,3</sup>, and Pi-Wan Cheng<sup>1,2,3,4</sup>

<sup>2</sup>Department of Research Service, Veterans Affairs Nebraska-Western Iowa Health Care System, Omaha, NE, USA,

<sup>3</sup>Department of Biochemistry and Molecular Biology, College of Medicine, and <sup>4</sup>Eppley Institute for Research in Cancer and Allied Diseases, University of Nebraska Medical Center, 985870 Nebraska Medical Center, Omaha, NE 68198-5870, USA

<sup>1</sup>To whom correspondence should be addressed. Tel: +1-402-559-5776; Fax: +1-402-559-6650; e-mail: pcheng@unmc.edu

<sup>5</sup>Present address: Department of Biochemistry, Karnatak University, Dharwad 03, India.

Received 23 December 2014; Revised 17 April 2015; Accepted 29 April 2015

## Abstract

The sialyl Lewis a and x (sLe<sup>a/x</sup>) antigens frequently displayed on the surface of tumor cells are involved in metastasis. Their synthesis has been attributed to altered expression of selective glycosyltransferases. Identification of these glycosyltransferases and the glycoproteins that carry these carbohydrate antigens should help advance our understanding of selectin-mediated cancer metastasis. In this study, quantitative real-time polymerase chain reaction analysis coupled with in situ proximity ligation assay and small interference RNA treatment shows involvement of  $\beta$ 3galactosyltransferase-V in the synthesis of MUC16-associated sLe<sup>a</sup> in H292 cells. Also,  $\alpha$ 3fucosyltransferase-V, which is absent in BEAS-2B human immortalized bronchial epithelial cells and A549 lung carcinoma cells, participates in the synthesis of MUC1-associated sLe<sup>x</sup> in CFT1 human immortalized bronchial epithelial cells and H292 lung carcinoma cells. Neither selectin ligand is found on MUC1 in BEAS-2B and A549 cells. Knockdown of either enzyme suppresses migration, and selectin tethering and rolling properties of H292 cells under dynamic flow as determined by wound healing and parallel plate flow chamber assays, respectively. These results provide insights into how the synthesis of mucin-associated selectin ligands and the metastatic properties of cancer cells can be regulated by selective glycosyltransferases that work on mucins. They may help develop novel anticancer drugs.

**Key words:** cell adhesion, glycosylation, glycosyltransferases, lung cancer, metastasis, sialyl Lewis antigens

## Introduction

Around 90% of cancer deaths are caused by tumor metastasis. Metastatic cancer cells employ the trafficking mechanisms utilized by leukocytes to target distant sites (Laubli and Borsig 2010). Following dissemination from the primary tumor into the blood stream, the circulating cancer cells are tethered to and roll on the endothelium at distant sites to establish firm adhesion prior to extravasation (Chambers et al. 2001). Tethering and rolling are mediated by interaction of selectins with their cognate carbohydrate ligands, Sialyl Lewis a (sLe<sup>a</sup>) and

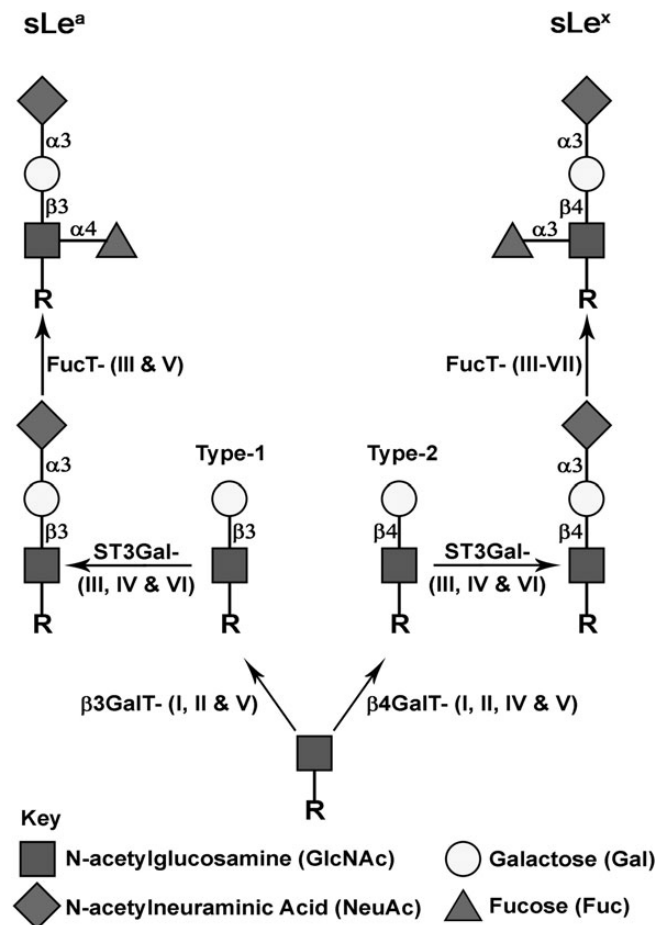
sialyl Lewis x (sLe<sup>x</sup>). These selectin ligands expressed on various cell types, including lymphocytes, monocytes, neutrophils and advanced cancers (Kannagi et al. 2004), play a key role in hematogenous cancer metastasis (Fukuda 1996; Kim et al. 1999; Kawarada et al. 2000; Ugorski and Laskowska 2002). They are also used as diagnostic and prognostic markers for cancer (Nakayama et al. 1995; Paganuzzi et al. 2003; Sumikura et al. 2003; Kannagi 2007). Both sialyl Lewis antigens are found on a variety of cell surface glycoproteins, including mucins (Fernandez-Rodriguez et al. 2001; Barthel et al. 2009; Remmers

et al. 2013). Biosynthesis of sLe<sup>a</sup> or sLe<sup>x</sup> (Figure 1) is initiated by addition of Gal in a  $\beta$ 1,3 or  $\beta$ 1,4 linkage, respectively, to a N-acetylglucosamine (GlcNAc) residue at the non-reducing terminus of an oligosaccharide chain. The structures of these two glycan products, which are designated as type-1 and type-2 lactosamine chains, are generated by  $\beta$ 3GalT and  $\beta$ 4GalT enzymes, respectively. Then, sialic acid is added to the Gal residue in an  $\alpha$ 2,3 linkage as catalyzed by ST3Gal (Ellies et al. 2002). Finally, fucose is added to the GlcNAc residue in an  $\alpha$ 1,3/1,4 linkage to complete the synthesis of these glycans (Brockhausen 2006). The isozymes within these four groups of glycosyltransferases (GTs) involved in the synthesis of these two sialyl Lewis antigens are:  $\beta$ 3GalT-I, II and V (Hennet et al. 1998; Isshiki et al. 1999),  $\beta$ 4GalT-I, II, IV and V (Hennet 2002), ST3Gal-III, IV and VI (Ellies et al. 2002) and  $\alpha$ 3/4FucT-III–VII (de Vries et al. 1995; Oriol et al. 1999; Norden et al. 2009). One major limitation in this area of glycobiology is a lack of a clear understanding of specific GT isozymes that work on a specific glycoprotein. This is the void current study is intended to fill.

MUC1, MUC4 and MUC16 (also called CA125) are the most widely studied membrane-bound mucins (Bafna et al. 2010). All three mucins have been shown to be decorated with various pancreatic carcinoma antigens including sLe<sup>a</sup> and sLe<sup>x</sup> (Fernandez-Rodriguez et al. 2001; Croce et al. 2007; Groux-Degroote et al. 2008; Barthel et al.

2009; Remmers et al. 2013). Although some of the isozymes that participate in the synthesis of these two selectin ligands have been identified, specific isozymes of these four groups of enzymes that synthesize these glycotopes on a given glycoprotein are largely not known. Recently, we showed that  $\beta$ 3GalT-I and ST3Gal-VI are involved in the synthesis of sLe<sup>a</sup> and sLe<sup>x</sup> on MUC1 in prostate and colon cancer cells, respectively (Chachadi et al. 2011; Chachadi et al. 2013). These studies also show that these two enzymes control the metastatic properties of these two cancer cells in an enzyme, mucin and cancer-specific fashion. Identification of additional glycoprotein-specific glycosyltransferase isozymes that are involved in the synthesis of these two selectin ligands is needed in order to gain a comprehensive understanding of the selectin-mediated cancer metastasis and develop a novel therapy.

In the present study, we have shown that  $\beta$ 3GalT-V is involved in the synthesis of MUC16-associated sLe<sup>a</sup> in H292 cells while FucT-V participates in the synthesis of sLe<sup>x</sup> associated with MUC1 in CFT1 and H292 cells. Depletion of  $\beta$ 3GalT-V or FucT-V in H292 cells results in suppression of their metastatic potential by reducing cell migration, and suppression of tethering to and rolling on immobilized E- and P-selectin under dynamic flow. The results further support the concept that glycosylation of a given glycoprotein is GT isozyme specific. However, this phenomenon may be cell type specific.



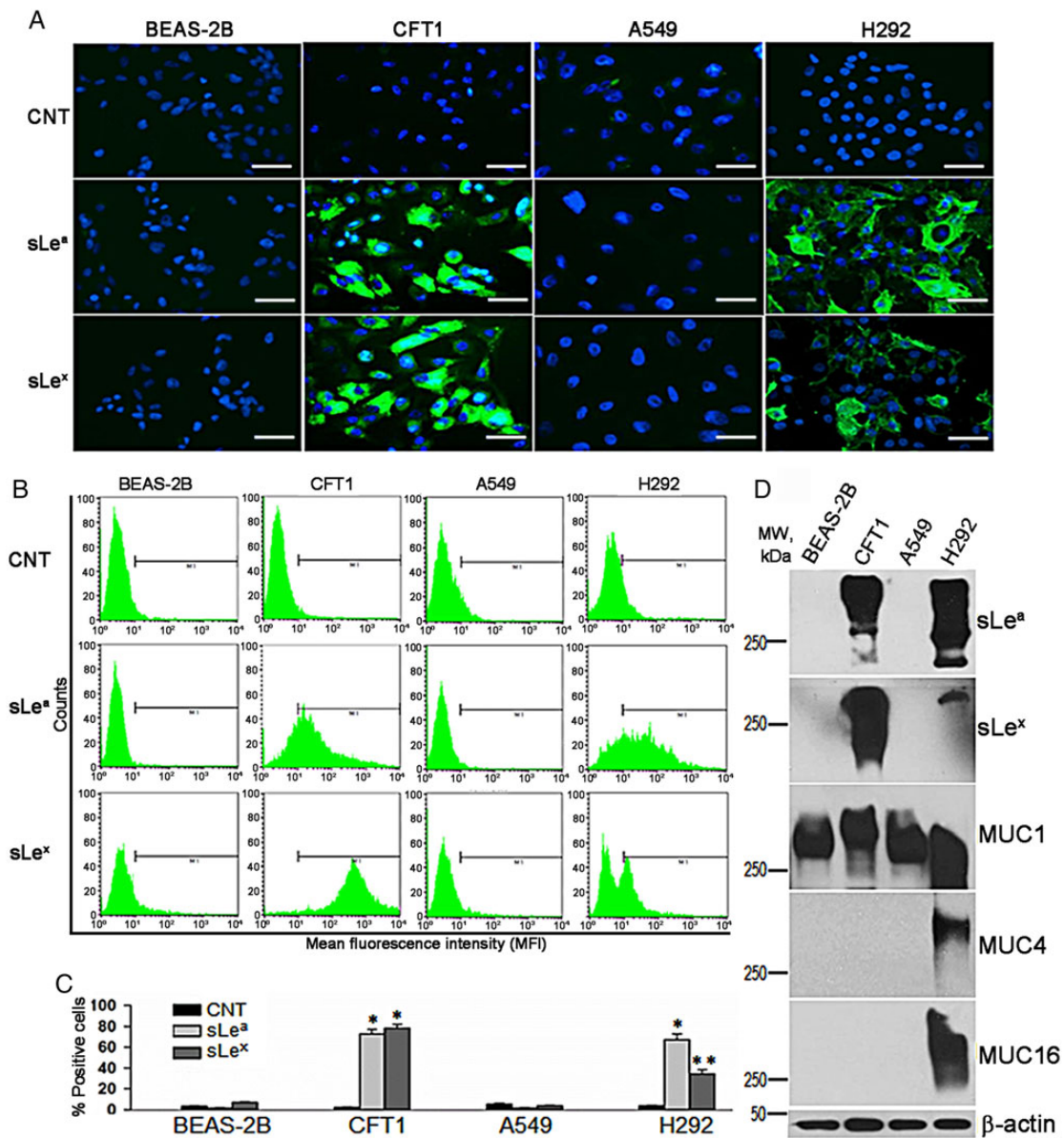
**Fig. 1.** Biosynthetic pathways for glycoprotein-associated sLe<sup>a</sup> and sLe<sup>x</sup> epitopes. Synthesis of sLe<sup>a</sup> is initiated by formation of type-1 lactosamine chain by addition of Gal to GlcNAc in a  $\beta$ 1,3-linkage catalyzed by  $\beta$ 3GalT-I, II and V. sLe<sup>x</sup> synthesis is initiated by formation of type-2 lactosamine by addition of Gal to GlcNAc in a  $\beta$ 1,4-linkage catalyzed by  $\beta$ 4GalT-I, II, IV and V. These two lactosamines are further elongated by a sialic acid-linked  $\alpha$ 2,3 to Gal to generate sialyl lactosamine as catalyzed by ST3GalT-III, IV and VI. Subsequent addition of Fuc to GlcNAc in an  $\alpha$ 1,3-linkage catalyzed by FucT-III and V produces sLe<sup>a</sup>, and addition of Fuc to GlcNAc in an  $\alpha$ 1,4-linkage catalyzed by FucT-III–VII produces sLe<sup>x</sup>. R represents a glycoprotein containing glycans terminated with GlcNAc.

## Results

### Expression of sLe<sup>a</sup> and sLe<sup>x</sup> selectin ligands in human immortalized bronchial epithelial and lung carcinoma cells

Given the important role sLe<sup>a</sup> and sLe<sup>x</sup> play in selectin-mediated cancer metastasis, we set out to identify key GTs that are involved in the synthesis of these glycotopes, and the membrane-bound mucins that carry them in lung carcinoma A549 and H292 cells. For comparison, we also performed same analysis in two human lung immortalized epithelial cells, BEAS-2B and CFT1. Confocal immunofluorescence microscopic analysis showed that CFT1 and H292 cells but not BEAS-2B and A549 cells were labeled with KM231 and CSLEX

antibodies (Abs), which recognize sLe<sup>a</sup> and sLe<sup>x</sup>, respectively (Figure 2A). Next, we employed flow cytometric analysis to quantify % of cells which displayed these two selectin ligands. sLe<sup>a</sup>- and sLe<sup>x</sup> were detected in CFT1 and H292 but not BEAS-2B and A549 cells (Figure 2B and C). In CFT1 cells, sLe<sup>a</sup>- and sLe<sup>x</sup>-positive cells were  $72.9 \pm 4.1$  and  $78.4 \pm 3.6\%$ , respectively, when compared with  $2.27 \pm 0.29\%$  in control (CNT) cells. In H292 cells, sLe<sup>a</sup>- and sLe<sup>x</sup>-positive cells were  $67.2 \pm 5.7$  and  $34.4 \pm 3.6\%$ , respectively, when compared with  $3.26 \pm 0.84\%$  in CNT cells. sLe<sup>a</sup>- and sLe<sup>x</sup>-positive cells were  $1.87 \pm 0.52$  and  $3.89 \pm 0.29\%$ , in BEAS-2B cells, respectively, and  $0.94 \pm 0.04$  and  $1.59 \pm 0.84\%$ , in A549 cells, respectively. To determine the membrane-bound mucins which carry these two glycotopes, we performed western blot analysis of sLe<sup>a</sup>, sLe<sup>x</sup> and membrane-bound



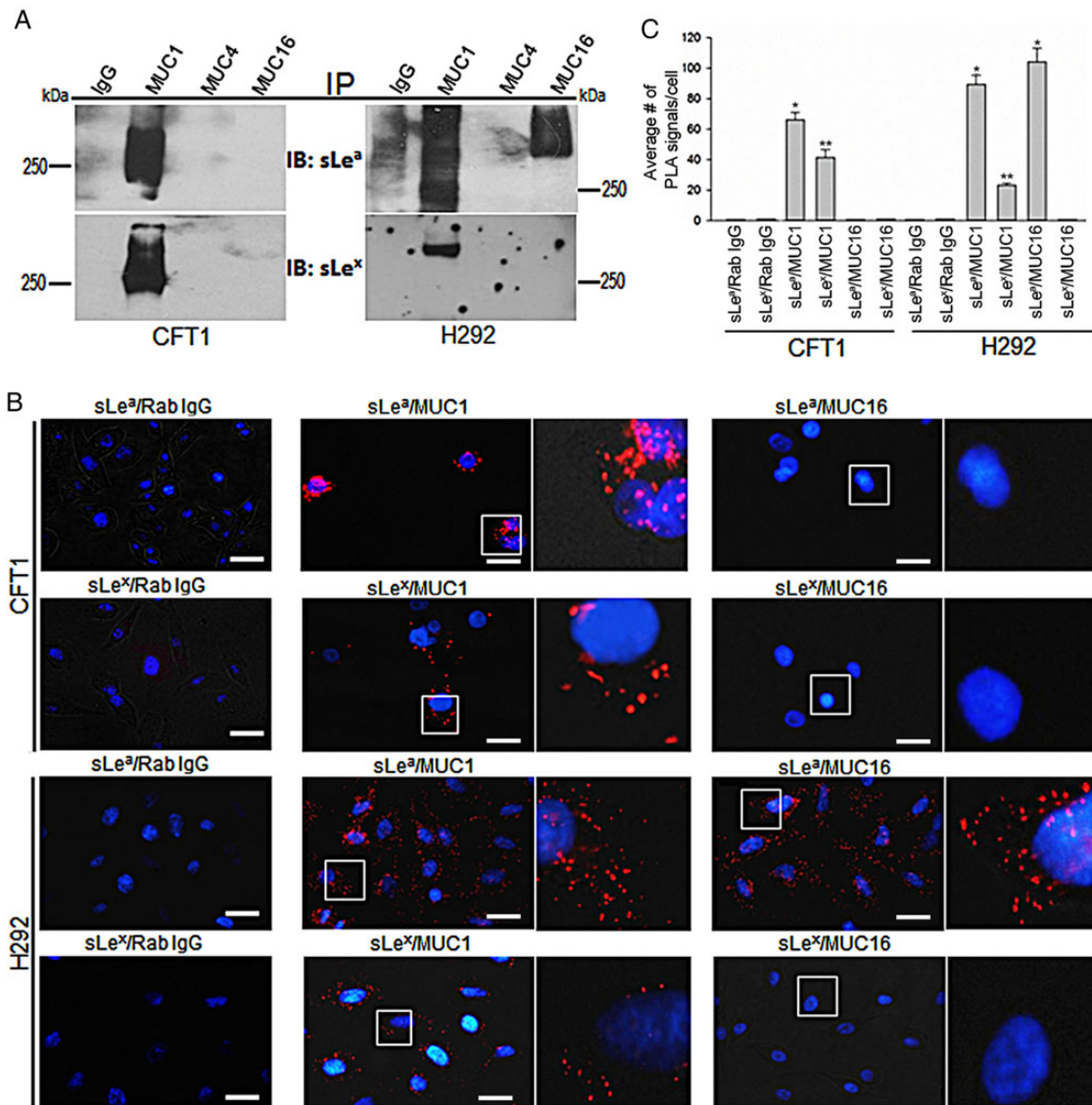
**Fig. 2.** Detection of sLe<sup>a</sup> and sLe<sup>x</sup> antigens in human lung immortalized epithelial cells and carcinoma cells. (A) Confocal immunofluorescence microscopic images of BEAS-2B, CFT1, A549 and H292 cells treated with control IgG/M (CNT), KM231 (sLe<sup>a</sup>) and CSLEX (sLe<sup>x</sup>) Abs followed by HRP-labeled secondary Ab (bar = 20 μm). (B) Flow cytometric analysis of these four cells treated as described in (A). (C) Quantitation of % sLe<sup>a</sup>- and sLe<sup>x</sup>-positive cells described in (B) (n=3). Error bars indicate SD (\*P<0.05, \*\*P<0.01). (D) Western analysis of sLe<sup>a</sup>, sLe<sup>x</sup>, MUC1, MUC4 and MUC16 in the lysates of these four cells. β-Actin was used as a loading control. Data shown are a representative of three independent experiments. This figure is available in black and white in print and in color at *Glycobiology* online.

mucins. As shown in Figure 2D, protein-associated sLe<sup>a</sup> and sLe<sup>x</sup> were detected only in the lysates of CFT1 and H292 cells. The high-molecular weight ( $\geq 250$  kDa) of these bands suggested that these two glycotopes were associated with mucins. To test this idea, western blotting of MUC1, MUC4 and MUC16 was performed. We detected MUC1 core protein in all four cell types while MUC4 and MUC16 in only H292 cells. The results suggested that sLe<sup>a</sup> and sLe<sup>x</sup> were associated with MUC1 in CFT1 cells but could be with any one of these three membrane-bound mucins in H292 cells.

### sLe<sup>a</sup> and sLe<sup>x</sup> are associated with MUC1 in CFT1 and H292 cells, and sLe<sup>a</sup> with MUC16 in H292 cells

To identify the membrane-bound mucins that carry sLe<sup>a</sup> and sLe<sup>x</sup>, we performed Co-immunoprecipitation (Co-IP) and in situ proximity

ligation assays (PLA). In the Co-IP assay, MUC1, MUC4 and MUC16 immunoprecipitates were subjected to sLe<sup>a</sup> and sLe<sup>x</sup> western blot analysis. As shown in Figure 3A, sLe<sup>a</sup> and sLe<sup>x</sup> were detected in MUC1 immunoprecipitates from the lysates of CFT1 and H292 cells. sLe<sup>a</sup> but not sLe<sup>x</sup> was detected in MUC16 immunoprecipitate from the lysate of H292 cells. Further, these two selectin ligands were not found in MUC4 immunoprecipitates from the lysates of CFT1 and H292 cells. The results were confirmed by in situ PLA. As shown in Figure 3B and C, strong PLA signals of sLe<sup>a</sup>/MUC1 were detected in CFT1 ( $68.3 \pm 7.3$ ) and H292 ( $89.1 \pm 13.4$ ) cells. Moderate PLA signals of sLe<sup>x</sup>/MUC1 were detected in CFT1 ( $40.1 \pm 5.4$ ) and H292 ( $23.2 \pm 3.14$ ) cells. Further, the PLA signal of sLe<sup>a</sup>/MUC16 was very strong in H292 ( $105 \pm 16.2$ ) but not detectable in CFT1 cells. The PLA results confirm the Co-IP results that sLe<sup>a</sup> and sLe<sup>x</sup> are associated with MUC1 in CFT1 and H292 cells while sLe<sup>a</sup> but not sLe<sup>x</sup> is associated with MUC16 in H292 cells.



**Fig. 3.** Association of sLe<sup>a</sup> and sLe<sup>x</sup> with MUC1 and MUC16 mucins in CFT1 and H292 cells. (A) sLe<sup>a</sup> and sLe<sup>x</sup> western blots of the MUC1, MUC4 and MUC16 immunoprecipitates from the lysates of CFT1 and H292 cells. Mouse IgG was used as a negative control. (B) Fluorescence microscopic images of proximity ligation assay. Positive PLA signals were detected for sLe<sup>a</sup>/MUC1 and sLe<sup>x</sup>/MUC1 in CFT1 and H292 cells, and sLe<sup>a</sup>/MUC16 in H292 cells. Areas marked with white boxes were enlarged (4 $\times$ ) and shown to the right side of the original images. As the controls, one of the paired Abs was replaced with non-specific IgG (bar = 20  $\mu$ m). (C) Quantification of PLA signals measured in 250 cells ( $n=4$ ) and expressed as average number of PLA signals. Error bars indicate SD (\* $P<0.05$ , \*\* $P<0.01$ ). This figure is available in black and white in print and in color at *Glycobiology* online.

### sLe<sup>a</sup> and sLe<sup>x</sup> are associated with mucin-type O-glycans but not N-glycans

Since MUC1 and MUC16 contain both asparagine (N)-linked and Ser/Thr-linked mucin-type O-glycans, we set out to determine which of these two glycans carries sLe<sup>a</sup> and sLe<sup>x</sup>. The peptide N-glycosidase (PNGase) F resistance of sLe<sup>a</sup> and sLe<sup>x</sup> in MUC1 immunoprecipitates from the lysates of CFT1 and H292 cells suggested that these two glycotopes were associated with mucin-type O-glycans (Figure 4A). The susceptibility of these glycotopes to mixed glycosidases, which contains neuraminidase, showed the congruence of the chemical nature of these glycotopes with those of the selectin ligands. Same result was obtained for MUC16-associated sLe<sup>a</sup> in H292 cells (Figure 4A). To confirm the presence of terminal  $\alpha$ 2,3 sialic acid, the sLe<sup>a</sup> and sLe<sup>x</sup> immunoprecipitates were analyzed by Maackia amurensis lectin blotting. Figure 4B clearly shows that sLe<sup>a</sup> and sLe<sup>x</sup> from CFT1 and H292 cells contain terminal  $\alpha$ 2,3 sialic acid, which further confirms the chemical nature of these two glycotopes.

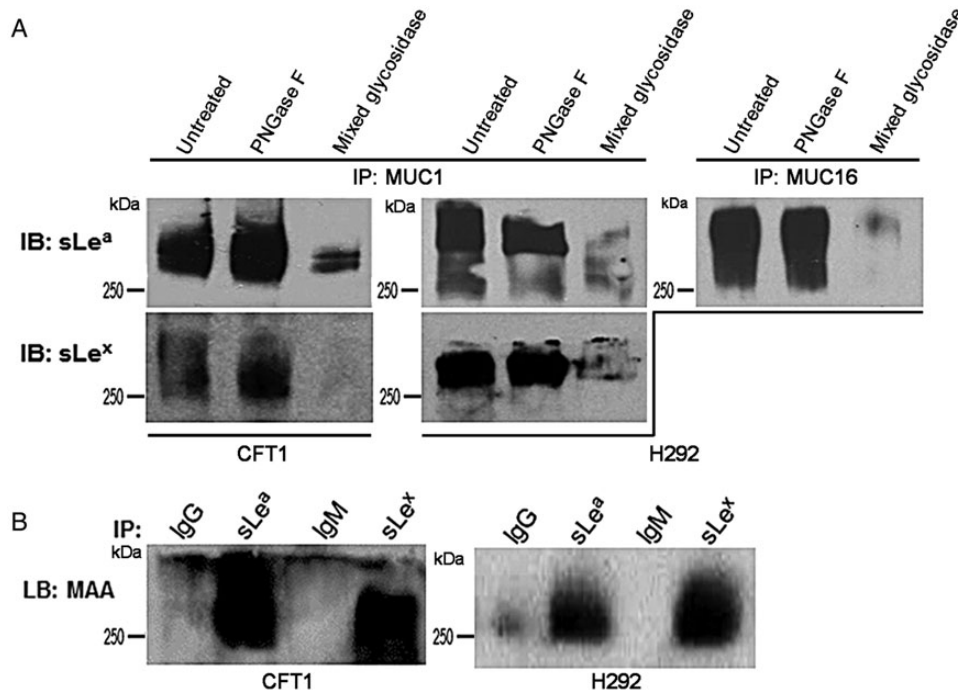
### Expression profile of B3GALT, B4GALT, ST3GAL and FUT genes, which participate in the synthesis of glycoprotein-associated sLe<sup>a</sup>/sLe<sup>x</sup>, in BEAS-2B, CFT1, H292 and A549 cells

To identify the GT isozymes involved in the synthesis of sLe<sup>a</sup> and sLe<sup>x</sup> associated with mucin O-glycans, we analyzed by quantitative real-time PCR (qRT-PCR) the expression profile of four groups of mucin O-glycan-specific GT genes, including *B3GALT*, *B4GALT*, *ST3GALT* and *FUT*, in all four lung cell types. The data are expressed as % of *GAPDH*. We detected moderate expression levels of *B3GALT1* in

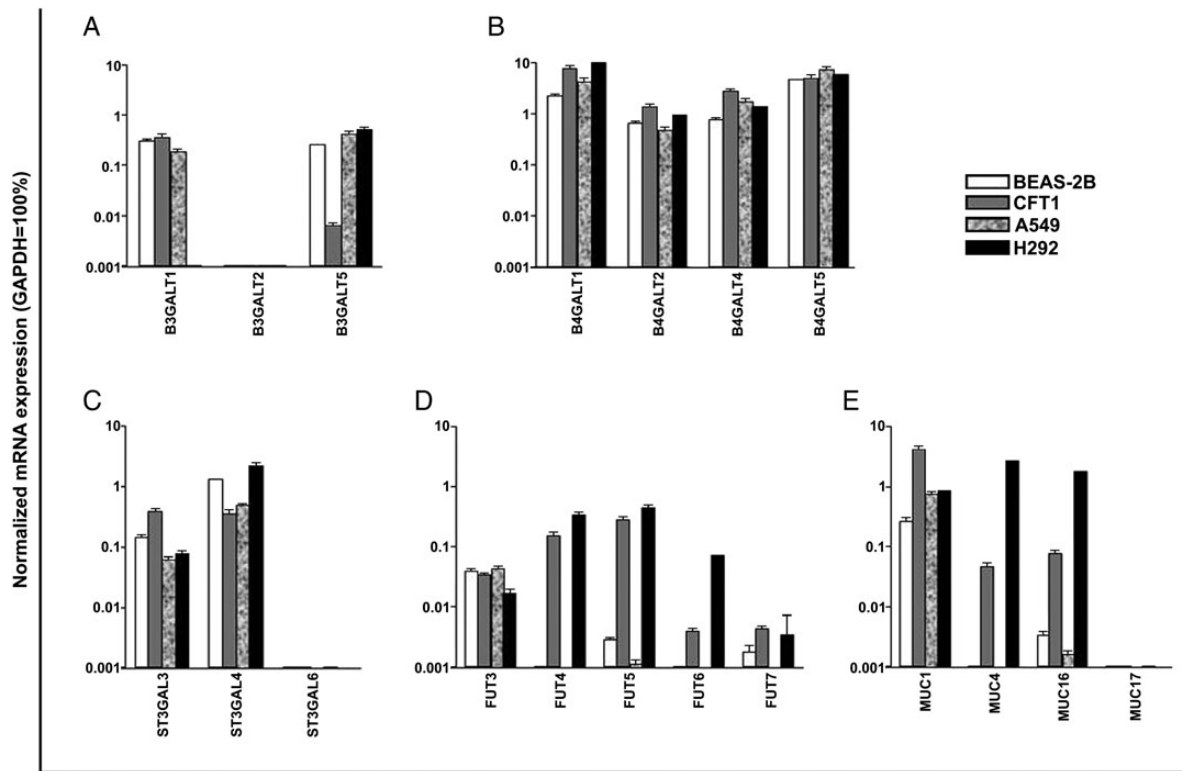
BEAS-2B, CFT1 and A549 cells, very low expression levels of *B3GALT1* in H292 cells and *B3GALT2* in all four cell types, and moderate expression levels of *B3GALT5* in BEAS-2B, A549 and H292 cells but very low level in CFT1 cells (Figure 5A). Moderate-to-high levels of expression of *B4GALT1*, 2, 4 and 5 were detected in all four cell types (Figure 5B). Low-to-moderate expression levels of *ST3GAL3*, moderate-to-high expression levels of *ST3GAL4* and no expression of *ST3GAL6* were found in all four cell types (Figure 5C). Also, low *FUT3* expression levels were found in all four cell types and moderate expression levels of *FUT4* & 5 were detected in CFT1 and H292 cells but very low expression levels in the other two cell types. Low level of *FUT6* expression was found in H292 cells and very low to no expression in the other three cell types (Figure 5D). To confirm the western blotting results of the membrane-bound mucins (Figure 2D), we measured the mRNA levels of *MUC1*, 4, 16 and 17 genes. Moderate-to-high levels of *MUC1* gene expression were found in all four cell types (Figure 5E). High levels of *MUC4* & 16 gene expression were detected in H292 cells but only low levels of expression in CFT1 cells. *MUC4* and *MUC16* gene expression levels in BEAS-2B and A549 cells and *MUC17* gene expression level in all four cells were extremely low. The relative gene expression levels of *MUC1*, 4 and 16 among these cells matched the western blotting results (Figure 2D).

### Silencing of B3GALT5 gene decreases sLe<sup>a</sup> in H292 cells, and silencing of FUT5 decreases sLe<sup>x</sup> in CFT1 and H292 cells

Although highly expressed in all four cell types, *MUC1* in only CFT1 and H292 cells was decorated with sLe<sup>a</sup> and sLe<sup>x</sup>, suggesting expression



**Fig. 4.** Characterization of the type of glycan in MUC1 and MUC16 with which sLe<sup>a</sup> and sLe<sup>x</sup> are associated. **(A)** sLe<sup>a</sup> and sLe<sup>x</sup> western blots of MUC1 immunoprecipitates from the lysates of CFT1 and H292 cells, and sLe<sup>a</sup> western blot of MUC16 immunoprecipitate from the lysate of H292 cells. The immunoprecipitates were treated with PNGase F or mixed glycosidases containing neuraminidase prior to western analysis. Untreated controls were similarly processed without enzymes. Proteins were subjected to western blot analysis and developed with HRP-labeled anti-sLe<sup>a</sup> and anti-sLe<sup>x</sup> antibodies. Both sLe<sup>a</sup> and sLe<sup>x</sup> pulled down by MUC1 and MUC16 antibodies were resistant to PNGase F suggesting that both glycotopes are associated with mucin-type O-glycan. **(B)** MAA lectin blot of IgG, sLe<sup>a</sup>, IgM or sLe<sup>x</sup> immunoprecipitates from the lysates of CFT1 and H292 cells. Result indicates the presence of  $\alpha$ 2-3 sialic acid in the immunoprecipitates which supports the presence of sLe<sup>a</sup> and sLe<sup>x</sup> in them.



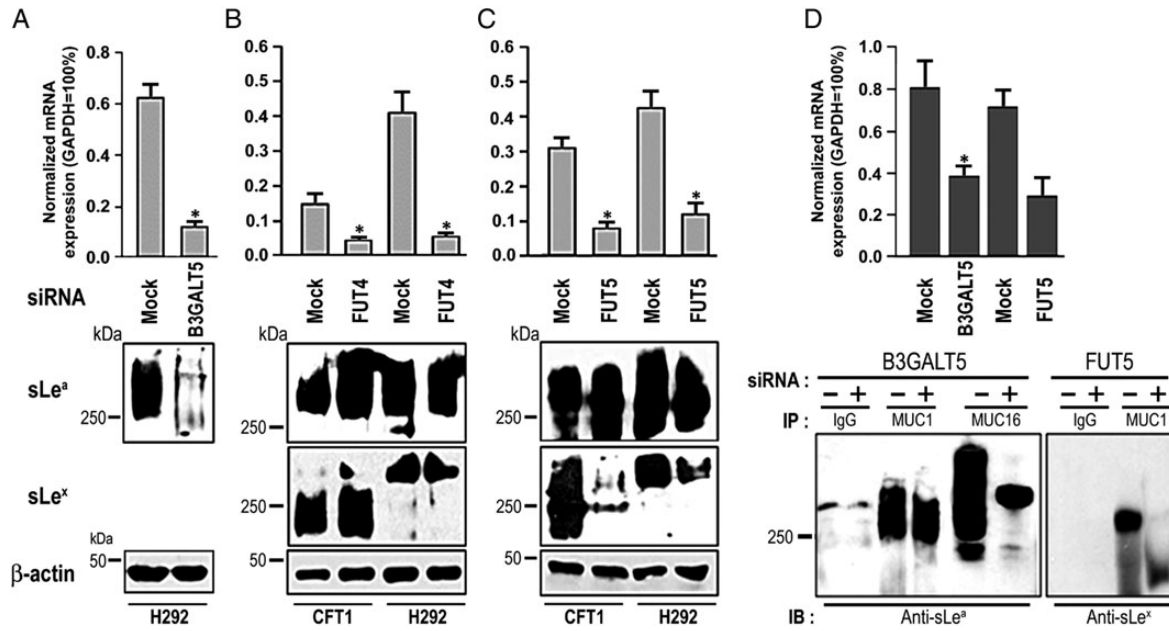
**Fig. 5.** Gene expression profiles of glycosyltransferases and membrane-bound mucins in BEAS-2B, CFT1, A549 and H292 cells, which are involved in the biosynthesis of sLe<sup>a</sup> and sLe<sup>x</sup>. (A–D) Gene expression profiles of glycosyltransferases involved in the biosynthesis of sialyl Lewis antigens analyzed by qRT-PCR. (A) *B3GALT1*, 2 and 5: type-1  $\beta$ 1,3 Gal transferases (B) *B4GALT1*, 2, 4 and 5: type-2  $\beta$ 1,4 Gal transferases, (C) *ST3GAL3*, 4 and 6 and (D) *FUT3–7*. (E) Expression profile of MUC1, 4, 16 and 17 genes as measured by qRT-PCR. Gene expression levels were sorted according to  $\Delta\Delta$ Ct method (see Methods for details), normalized with GAPDH (=100%) in same cell preparation, expressed as mean  $\pm$  SD and plotted in a log scale ( $n=3$ ). Gene encoding  $\beta$ 3GalT-V involved in the synthesis of sLe<sup>a</sup> was expressed at moderate levels in all but CFT1 cells, which expressed this gene at a very low level, while high level of MUC16 gene expression was detected only in H292 cells. Similarly, moderate levels of *FUT4* and *FUT5* genes were expressed in CFT1 and H292 cells.

of all GTs needed for the synthesis of these two glycotopes in these two cell types. Since the expression levels of *B4GALT1*, 2, 4 and 5 and *ST3GAL3* and 4 genes were adequate for producing the expected glycan structures, they were not considered crucial in determining the differential expression of these two selectin ligands between these two and the other two lung cell types. Therefore, analysis of the differential expression of *B3GALT* and *FUT* genes among these cells could help identify specific  $\beta$ 3GalT and  $\alpha$ 1,3/4FucT isozymes involved in the synthesis of MUC-associated sLe<sup>a</sup> and sLe<sup>x</sup>. Further, presence of sLe<sup>a</sup> and absence of sLe<sup>x</sup> on MUC16 in H292 cells suggested that the differential expression of *B3GALT5* could be the key determinant. Also, cell-type-specific differences in the expression of glycoprotein-specific *FUT* genes suggested that *FUT4* and 5 were the candidate genes, because these two genes were expressed in CFT1 and H292 but not the other two cell types. To test these ideas, series of siRNA knockdown experiments were carried out to identify the specific GT isozymes involved in the synthesis of sLe<sup>a</sup> and sLe<sup>x</sup>. Figure 6A shows that knockdown of *B3GALT5* gene in H292 cells by 80.5% decreased sLe<sup>a</sup> by 87.2%. To investigate the possible involvement of FucT-IV and FucT-V in the synthesis of sLe<sup>a</sup> and sLe<sup>x</sup>, these genes were individually silenced. Knockdown of *FUT4* mRNA by 68.8 and 86.2% in CFT1 and H292 cells, respectively, did not affect the production of either sLe<sup>a</sup> or sLe<sup>x</sup> (Figure 6B). However, knockdown of *FUT5* gene expression in CFT1 and H292 cells by 74.0 and 71.3% reduced sLe<sup>x</sup> by 85 and 61%, respectively (Figure 6C), suggesting involvement of FucT-V in the synthesis of MUC1-associated sLe<sup>x</sup> in CFT1 and H292 cells. This effect is *FUT5*-specific because

knockdown of *FUT5* mRNA did not affect the expression levels of *FUT3* and *FUT6* (data not shown), which exhibit very high sequence identity with *FUT5* (de Vries et al. 2001). Furthermore, FucT-V did not participate in the synthesis of MUC1 and MUC16-associated sLe<sup>a</sup> in CFT1 and H292 cells because knockdown of *FUT5* did not affect sLe<sup>a</sup> detected in these cells by western blotting. Additionally, knockdown of *B3GALT5* mRNA (by 52%) in H292 cells decreased sLe<sup>a</sup> (by 73%) associated with MUC16 but not MUC1 (Figure 6D), indicating that *B3GALT5* participates in the synthesis of sLe<sup>a</sup> associated with MUC16 but not MUC1 in this cell type. Knockdown of *FUT5* mRNA (by 54%) in H292 cells decreased MUC1-associated sLe<sup>a</sup> to below detectable level (Figure 6D), indicating that FucT-V is involved in the synthesis of MUC1-associated sLe<sup>a</sup> in this cell type.

#### Knockdown of either *B3GALT5* or *FUT5* gene decreases in vitro migratory and metastatic properties of H292 cells

To investigate the functional consequences of the aforementioned molecular findings, in vitro cell migration and cell binding were measured by wound healing and parallel plate flow chamber assays under dynamic flow, respectively. Knockdown of either *B3GALT5* or *FUT5* mRNA in H292 cells by siRNA treatment suppressed cell migration (Figure 7A). The rate of cell migration towards the scratch wound was significantly reduced when compared with that of mock-treated CNT cells (Figure 7B). The difference still existed even at 48 h post scratch. Since sLe<sup>a</sup> and sLe<sup>x</sup> are carbohydrate ligands involved in selectin-mediated



**Fig. 6.** *B3GALT5* is involved in the synthesis of *sLe<sup>a</sup>* in H292 cells, and *FUT5* is involved in the synthesis of *sLe<sup>x</sup>* in CFT1 and H292 cells. (A) *sLe<sup>a</sup>* western blot (bottom panel) of the lysates of H292 cells treated with either *B3GALT5* or scrambled siRNAs (Mock). mRNA levels were measured by qRT-PCR (upper panel). Reduction of *B3GALT5* mRNA level greatly reduced *sLe<sup>a</sup>* level as measured by western blotting. (B and C) *sLe<sup>a</sup>* and *sLe<sup>x</sup>* western blots of the lysates of CFT1 and H292 cells treated with scrambled (Mock), (B) *FUT4* and (C) *FUT5* siRNAs. Reduction of *FUT4* mRNA levels in CFT1 and H292 cells did not affect *sLe<sup>a</sup>* or *sLe<sup>x</sup>* level. Reduction of *FUT5* mRNA levels in CFT1 and H292 cells greatly reduced *sLe<sup>x</sup>* levels in these two cells.  $\beta$ -Actin was used as equal protein-loading control. (D) *B3GALT5* and *FUT5* gene knockdown experiments were repeated in H292 cells, and MUC1 and MUC16 were immunoprecipitated followed by western blotting for *sLe<sup>a</sup>* and *sLe<sup>x</sup>*. Efficiency of gene knockdown was determined by measuring the mRNA level by qRT-PCR. All the experiments were performed in triplicates and data were expressed as mean values  $\pm$  SD (\* $P < 0.05$ ).

hematogenous metastasis of cancer cells (Kannagi et al. 2004), we proceeded to examine the effect of knocking down either *B3GALT5* or *FUT5* mRNA in H292 cells on their in vitro interaction with immobilized P- or E-selectin under dynamic flow. We found that knockdown of *B3GALT5* mRNA in H292 cells significantly reduced their tethering to and rolling on immobilized E- and P-selectins. When compared with mock-treated cells, cells treated with *B3GALT5* siRNAs showed a reduction in the number of cells tethered to E-selectin by 35.6% and P-selectin by 44.7% (Figure 7C), and rolled on E-selectin by 64.2% and P-selectin by 22.1% (Figure 7D). Also, when compared with mock-treated cells, cells treated with *FUT5* siRNAs exhibited a reduction in the number of cells tethered to E-selectin by 44.9% and P-selectin by 49.6% (Figure 7C), and rolled on E-selectin by 47.9% and P-selectin by 48.0% (Figure 7D). The results indicate that both  $\beta$ GalT-V and FucT-V play an important role in selectin-mediated tethering and rolling of H292 cells by participating in the synthesis of *sLe<sup>a</sup>* and *sLe<sup>x</sup>* in a MUC-specific fashion.

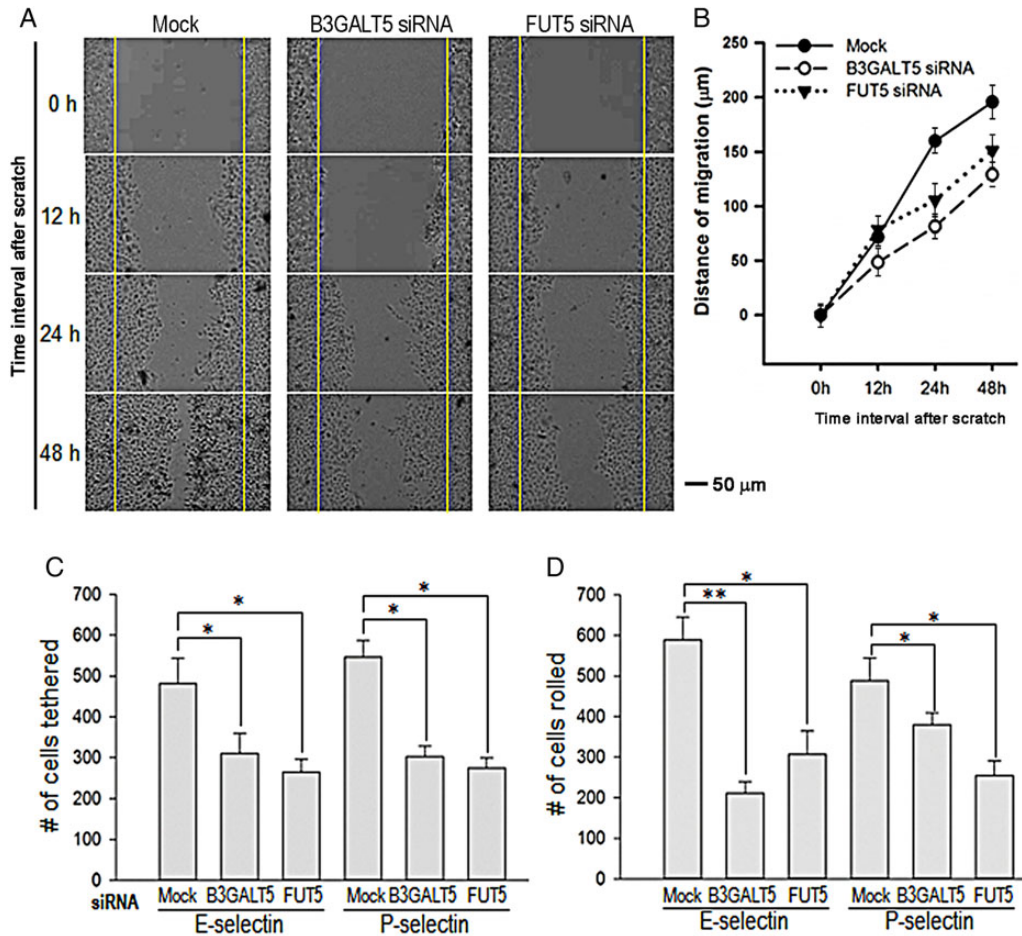
## Discussion

Cell surface sialyl Lewis antigens play an important role in selectin-mediated leukocyte trafficking (Kawarada et al. 2000; Ugorski and Laskowska 2002) and cancer metastasis (Shimodaira et al. 1997; Dimitroff et al. 2004). Synthesis of these two glycotopes requires participation of four groups of GTs,  $\beta$ GalT,  $\beta$ 4GalT, ST3Gal and FucT. Each of these GT gene families contains several isozymes. The involvement of specific isozymes of each GT family in the synthesis of these two selectin ligands in a given glycoprotein is largely unknown. In this study, we have identified  $\beta$ GalT-V as the isozyme involved in the synthesis of *sLe<sup>a</sup>* associated with MUC16 in H292

cells. Also, we have identified FucT-V as the isozyme involved in the synthesis of *sLe<sup>x</sup>* associated with MUC1 in CFT1 and H292 cells. Further, we have also discovered that by participating in the synthesis of *sLe<sup>a</sup>* and *sLe<sup>x</sup>*,  $\beta$ GalT-V and FucT-V play a critical role in the in vitro migratory and metastatic properties of H292 cells.

Biosynthesis of mucin glycans takes place exclusively in the Golgi apparatus in a template-independent process. The glycan structure is determined primarily by (a) the expression levels of GT genes, (b) the substrate specificity of GTs, (c) the Golgi localization of the isozymes of each GT and (d) the intra-Golgi transport route of the glycoprotein substrates in the Golgi in relationship to the Golgi localization of their cognate GTs. Since most isozymes within a GT gene family have overlapping substrate specificities and can produce same product when their enzymatic activities are measured in vitro, it is not possible to attribute a glycan structure generated on a glycoprotein to a specific isozyme based on the enzyme activity measured in cell homogenate. Therefore, to understand the biological function of a GT isozyme, the glycoprotein substrate that carries the glycotope generated by each isozyme in vivo needs to be identified.

It should be pointed out that only few isozymes within each of these four enzyme groups are involved in the synthesis of glycoprotein-associated *sLe<sup>a</sup>* and *sLe<sup>x</sup>*. For example, there are five  $\beta$ GalT isozymes which can synthesize  $\beta$ Gal structure, but only three, including  $\beta$ GalT-I, II and V, can generate type-1 lactosamine structure (Hennet et al. 1998; Ishiki et al. 1999; Hennet 2002). There are seven  $\beta$ 4GalT isozymes which can synthesize  $\beta$ 4Gal structure, but only four, including  $\beta$ 4GalT-I, II, IV and V can produce type-2 lactosamine chain (Amado et al. 1999; Furukawa and Sato 1999). There are six ST3Gal isozymes which can synthesize *N*-acetylneuraminic acid (NeuAc)  $\alpha$ 2,3Gal structure, but only three, including ST3Gal-III, IV and VI, can generate



**Fig. 7.** Knockdown of *B3GALT5* or *FUT5* in H292 cells decreases migration, and tethering to and rolling on E- and P-selectins. (A) Wound healing migration assay of H292 cells after treatment with *B3GALT5*- or *FUT5*-specific siRNAs. Phase contrast images were obtained at 0, 12, 24 and 48 h after scratching following 72 h siRNA treatment. (B) Quantification of the migration distance in cultures after the scratch as shown in (A). Data were obtained from three independent experiments ( $n=3$ ,  $*P<0.05$  vs. mock). (C) No. of cells tethered to (D) and rolled on E- or P-selectin-coated cover slip inside a parallel plate flow chamber. H292 cells ( $2.5 \times 10^5$  cells/mL) that had been treated with scrambled (Mock), *B3GALT5* or *FUT5* siRNAs were perfused at a constant wall shear stress of 1.0 dyne/cm<sup>2</sup>. Tethering and rolling were visualized with a phase-contrast microscope at  $\times 40$  magnification and videotaped. *B3GALT5* or *FUT5* siRNA-treated cells show reduced in vitro migration, and selectin-adhesion properties. ( $*P<0.05$ ,  $**P<0.001$  for specific siRNA-treated vs. scrambled siRNA-treated cells). This figure is available in black and white in print and in color at *Glycobiology* online.

NeuAc $\alpha$ 2,3Gal $\beta$ 3/4GlcNAc, the precursors of sLe<sup>a</sup> and sLe<sup>x</sup> (Sasaki et al. 1993; Okajima et al. 1999). Further, among the isozymes within each enzyme family, differences in substrate specificity also exist. For example, the preference of ST3Gal-III for type-1 over type-2 lactosamine acceptor suggests that sialylated type-1 chain is its predominant product (Wen et al. 1992; Kitagawa and Paulson 1993). Also, ST3Gal-IV and VI prefer type-2 over type-1 lactosamine as their acceptor, which makes synthesis of sialylated type-2 chain their primary function (Rohfritsch et al. 2006; Carvalho et al. 2010). There are 10  $\alpha$ 3/4FucT isozymes which can synthesize  $\alpha$ 3/4Fuc structure, but only five, including FucT-III–VII, can make sLe<sup>a</sup> and sLe<sup>x</sup> in glycoproteins (de Vries et al. 2001). Further, there are differences in the specificities toward four different acceptors for these enzymes. FucT-III and V can work on both type-1 and type-2 acceptors, and FucT-III prefers type-1 over type-2 and vice versa for FucT-V. These enzymes can work on their respective lactosamine acceptors with or without sialic acid. However, FucT-VII is only active with  $\alpha$ 2,3 sialylated type-2 lactosamine acceptor (Shinoda et al. 1998). Table I summarizes the carbohydrate acceptor specificities of the GT isozymes involved in the synthesis of glycoprotein-associated sLe<sup>a</sup> and sLe<sup>x</sup>.

Altered tumor-associated carbohydrate antigens have been identified in many solid tumors (Cazet et al. 2010). Tissue and tumor-specific expression of GT genes also has been reported (Tsuiji 1996). But, very little is known about the specific GT isozymes that are responsible for the synthesis of these altered glycans. Even much less is known about the glycoproteins that carry these tumor-associated carbohydrate antigens in vivo. As shown in Table I, the glycan synthesis in a given glycoprotein is GT isozyme specific. Recently, our lab has shown that  $\beta$ 3GalT-I and ST3Gal-VI are involved in the synthesis of MUC1-associated sLe<sup>a</sup> in human normal prostatic RWPE-1 cells (Chachadi et al. 2013) and sLe<sup>x</sup> in human colonic adenocarcinoma HCT15 cells (Chachadi et al. 2011), respectively. In the absence of  $\beta$ 3GalT-I, MUC1-associated sLe<sup>a</sup> was not produced despite expression of high level of *B3GALT5* gene in RWPE-1 cells. sLe<sup>a</sup> was generated only after induction of the expression of *B3GALT1* gene by treatment with suberoylanilide hydroxamic acid, a histone deacetylase inhibitor (Chachadi et al. 2013). Also, sLe<sup>x</sup> was not detected in HCT15 cells which express very low level of *ST3GAL6* but moderate-to-high levels of *ST3GAL3*, *ST3GAL4* and *ST3GALT5*. Following treatment with 5-aza-2'-deoxycytidine, a DNA methylase



**Table 1.** Carbohydrate and glycoprotein acceptor specificity of the glycosyltransferase isozymes involved in the synthesis of glycoprotein-associated sLe<sup>a</sup> and sLe<sup>x</sup>

| Isozymes             | Glycan acceptors and preference   | Glycan products   | Glycoprotein substrates in vivo  |
|----------------------|---|---|--|
| B3GALT1              | GlcNAc $\beta$ -saccharide (Amado et al. 1998; Holgersson and Lofling 2006) | Gal $\beta$ 1,3GlcNAc   | MUC1 (Chachadi et al. 2013)  |
| B3GALT5              | GlcNAc $\beta$ -saccharide (Holgersson and Lofling 2006)                    | Gal $\beta$ 1,3GlcNAc   | CD43 (Holgersson and Lofling 2006); MUC16 <sup>a</sup>   |
| B4GALT1 <sup>b</sup> | GlcNAc $\beta$ -saccharide (Henner 2002)                                    | Gal $\beta$ 1,4GlcNAc   | PSGL1 (Nakayama et al. 2000)   |
| ST3GAL4 <sup>c</sup> | Type-2>Type-1 (Sasaki et al. 1993)  | NeuAc $\alpha$ 2,3Gal $\beta$ 1,4/3GlcNAc                           | PSGL1 (Harduin-Lepers et al. 2001)   |
| ST3GAL6 <sup>c</sup> | Type-2>Type-1 (Okajima et al. 1999)   | NeuAc $\alpha$ 2,3Gal $\beta$ 1,4/3GlcNAc                           | MUC1 (Chachadi et al. 2011)  |
| FUT3                 | ( $\pm$ Sialyl)Type1>Type-2 (de Vries et al. 1995)                          | $\pm$ NeuAc $\alpha$ 2,3Gal $\beta$ 1,3/4(Fuc $\alpha$ 1,4/3)GlcNAc | CD44 (Padro et al. 2011)   |
| FUT4                 | ( $\pm$ Sialyl)Type-2 (Niemela et al. 1998)                                 | $\pm$ NeuAc $\alpha$ 2,3Gal $\beta$ 1,4(Fuc $\alpha$ 1,3)GlcNAc     | ESL-1, PSGL1 (Homeister et al. 2001; Martinez et al. 2005)   |
| FUT5                 | ( $\pm$ Sialyl)Type-2>Type-1 (Okajima et al. 1999)                          | $\pm$ NeuAc $\alpha$ 2,3Gal $\beta$ 1,4/3(Fuc $\alpha$ 1,3/4)GlcNAc | CD44 (Padro et al. 2011); MUC1 <sup>a</sup>  |
| FUT6                 | ( $\pm$ Sialyl)Type-2 (de Vries et al. 1995)                                | $\pm$ NeuAc $\alpha$ 2,3Gal $\beta$ 1,4(Fuc $\alpha$ 1,3)GlcNAc     | CEA (Barthel et al. 2009)  |
| FUT7                 | Sialyl Type-2 (Shinoda et al. 1998)   | NeuAc $\alpha$ 2,3Gal $\beta$ 1,4(Fuc $\alpha$ 1,3)GlcNAc           | CD24, GlyCAM-1, ESL-1, PSGL1, MCAM (Barthel et al. 2009; Homeister et al. 2001; Huang et al. 2000; Li et al. 2005; Martinez et al. 2005) |

<sup>a</sup>Identified in this study.

<sup>b</sup>Glycoprotein substrates for B4GALT2, 4 and 5, which exhibit same carbohydrate acceptor specificity and generate same glycan product as B4GALT1, have not been identified.

<sup>c</sup>Glycoprotein substrates for ST3GAL3, which acts on NeuAc $\alpha$ 2,3Gal $\beta$ 1,3/4GlcNAc and has higher specificity towards type-1 over type-2 glycans (Weinstein et al. 1982), have not been identified.

CEA, carcinoembryonic antigen; MCAM, melanoma cell adhesion molecule; ESL, E-selectin ligand; PSGL1, P-selectin glycoprotein ligand-1; GlyCAM-1, glycosylation-dependent cell adhesion molecule 1.

inhibitor, sLe<sup>x</sup> was generated following a 754-fold increase in the expression of *ST3GAL6* gene. The data support the concept that in vivo, each glycoprotein is glycosylated by its cognate GTs in an isozyme-specific fashion.

Current study provides further evidence to support the concept that in vivo glycosylation of a given glycoprotein is GT isozyme specific. In this study, we have identified specific isozymes of two GTs which participate in the synthesis of MUC-associated sLe<sup>a</sup> and sLe<sup>x</sup>. We have found that  $\beta$ 3GalT-V is involved in the synthesis of MUC16-associated sLe<sup>a</sup> in H292 cells. Further, FucT-V is found to be involved in the synthesis of MUC1-associated sLe<sup>x</sup> but not sLe<sup>a</sup> in this type cell. Interestingly, sLe<sup>x</sup> in H292 cells is greatly reduced after knockdown of *FUT5* gene even though the moderate expression levels of *FUT3*, *FUT4* and *FUT6* are sufficient for generation of sLe<sup>x</sup> if these enzymes have access to MUC1-associated sialylated type-2 lactosamine. FucT-IV is not involved in the synthesis of sLe<sup>a</sup> and sLe<sup>x</sup> because knockdown of mRNA of this gene in CFT1 and H292 cells did not affect synthesis of these selectin ligands. FucT-III appears to be the likely candidate for the synthesis of sLe<sup>a</sup> in H292 cells because FucT-III but not FucT-VI has the affinity for sialylated type-1 lactosamine. Further, lack of FucT-V is the likely explanation for the inability of BEAS-2B and A549 cells to generate MUC1-associated sLe<sup>x</sup>. The low level of *MUC16* gene expression in BEAS-2B, CFT1 and A549 cells may further contribute to the absence of MUC16-associated selectin ligands in these cell types. These predictions remain to be verified. These results clearly show that synthesis of MUC-associated glycans is GT isozyme-specific. However, this phenomenon may be cell type specific because of the following reasons. First, ST3Gal6 is required for synthesis of sLe<sup>x</sup> associated with MUC1 in HCT15 cells (Chachadi et al. 2011) but not H292 cells as shown in current study. Second,  $\beta$ 3GalT-1 is involved in the synthesis of MUC1-associated sLe<sup>a</sup> in normal prostatic RWPE-1 cells (Chachadi et al. 2013) but not H292 cells. In this cell type, we show that  $\beta$ 3GalT-V is the isozyme which participates in the

synthesis of this selectin ligand on MUC1. To gain more insight into this phenomenon, it is necessary to identify GTs required for the synthesis of MUC1-associated sLe<sup>a</sup> and sLe<sup>x</sup> in more cell types. Further, given that Golgi targeting of GTs is altered in aggressive cancer cells, which leads to altered glycosylation (Petrosyan et al. 2014), it is imperative to compare the results between normal and cancerous cells and between same cancer cells with normal and altered Golgi targeting of GTs to determine if the Golgi targeting of a GT remains the same between the above-mentioned cell pair because differences in mucin substrate specificity of ST3Gal6 and  $\beta$ 3GalT-1 in different carcinoma cells may be caused by altered Golgi targeting of GTs.

Another interesting finding of current study is that  $\beta$ 3GalT-V and FucT-V play an important role in the in vitro metastatic property of H292 cells because knockdown of either gene reduces the migratory and selectin-mediated adhesion properties of these cells. These enzymes and/or the mucins which they work on may serve as potential targets for developing therapeutic strategy to inhibit the metastatic properties of the primary tumors.

Current work provides an additional insight into our concept that each GT isozyme acts only on a subset of glycoproteins even though they show similar sugar substrate specificity and can produce same carbohydrate structure in vitro. Further, it will be of interest to elucidate the mechanism by which GT isozymes meet up with their glycoprotein substrates in cancer cells in vivo, which may provide an opportunity for developing cancer therapy.

## Materials and methods

### Materials

Dulbecco's modified Eagle's medium (DMEM), F-12K, penicillin-streptomycin, fetal bovine serum (FBS), bovine serum albumin (BSA) and trypsin/EDTA were procured from Life Technologies Inc.

(Grand Island, NY). Bronchial epithelial growth medium (BEGM) was obtained from Lonza (Walkersville, MD). Solutions of SDS–PAGE and protein estimation kit were purchased from Bio-Rad (Hercules, CA). A mixture of prestained protein molecular weight standard marker was from Fermentas (Glen Burnie, MD). ECL reagent kit was obtained from Pierce Biotechnology (Rockford, IL). Nuclear stain DAPI was from Life Technologies Inc. (Grand Island, NY). KM231 mouse monoclonal Abs to sLe<sup>a</sup> was from EMD Millipore Corporation (Billerica, MA) and anti-sLe<sup>x</sup> (CSLEX1) antibody was procured from BD Biosciences (San Jose, CA). Mouse monoclonal Ab to  $\beta$ -actin was from Sigma (St. Louis, MO). Anti-MUC1 mouse Ab was obtained from Life Span Biosciences (Seattle, WA) while rabbit polyclonal Abs to MUC1 was from Abcam (Cambridge, MA). Anti-MUC4 (8G-7) Ab was from Santa Cruz Biotechnology, Inc. (Santa Cruz, CA) and anti-MUC16 Ab was from Abcam (Cambridge, MA). Horseradish peroxidase, DyLight<sup>®</sup> 488 (green) and DyLight<sup>®</sup> 595 (red) conjugated secondary Abs (donkey anti-rabbit, donkey anti-mouse) were obtained from Jackson ImmunoResearch (West Grove, PA). Biotinylated Maackia amurensis lectin (MAA) was purchased from EY laboratories (San Mateo, CA).

#### Cell culture

Human immortalized bronchial epithelial cells (BEAS-2B) or lung carcinoma cells, including A549 and H292, were obtained from the American Type Culture Collection (Rockville, MD), whereas immortalized CFT1-C2 cells (derived from human tracheal epithelial cells with the CF  $\Delta$ F508 mutation) were provided by Dr. James Yankaskas (The University of North Carolina at Chapel Hill, NC) (Yankaskas et al. 1993). CFT1 and BEAS-2B cells were grown in BEGM supplemented with hormones and growth factor while A549 and H292 cells were grown in DMEM high glucose medium supplemented with 10% FBS and antibiotics (50 units/mL penicillin and 50  $\mu$ g/mL streptomycin) at 37°C under 5% CO<sub>2</sub> and water saturated environment.

#### Gel electrophoresis and immunoblotting

Cell homogenate proteins (50  $\mu$ g) were separated on 2% SDS–agarose gel as well as SDS–4% polyacrylamide gels under reducing conditions and transferred to PVDF membranes overnight at 4°C. The blotted membranes were blocked at RT for 1 h with a blocking solution [tris buffered saline (TBS), pH 7.4, 5% nonfat dried milk, 0.1% Tween-20] and incubated at 4°C overnight in a blocking solution containing primary Abs with appropriate dilutions. After washing with TBST, the membranes were incubated with horseradish peroxidase (HRP)-conjugated secondary Ab for 1 h. Immunoreactive bands were detected by Thermo Scientific SuperSignal West Pico Chemoluminescent substrate reagents and exposed to BioExpress Blue Basic Autorad chemo-luminescence film (Kaysville, UT). Prestained protein ladder was used as the molecular-weight markers. Immunodetected  $\beta$ -actin was used to ensure equal protein loading after separation by SDS–12% polyacrylamide gel electrophoresis.

#### Fluorescence microscopy

BEAS-2B, CFT1, A549 and H292 were grown overnight on cover slips and fixed in 4% paraformaldehyde/PBS at RT for 30 min (Chachadi et al. 2013). After treated with primary Ab (1 : 50) at 37°C for 1 h, the cells were stained with dyLight-488 conjugated donkey anti-mouse IgG or IgM Ab and mounted in ProLong Gold antifade reagent with DAPI. Cells processed without primary antibodies served as negative control. Finally, cells stained with sLe<sup>a</sup> and sLe<sup>x</sup> Abs were

examined under EVOS<sup>®</sup> FL digital inverted fluorescence microscope from AMG (Bothell, WA) and photographed at 60 $\times$  magnification.

#### Flow cytometric analysis

Quantitative and comparative assessment of cell surface sLe<sup>a</sup> and sLe<sup>x</sup> were performed by flow cytometry using KM231 (sLe<sup>a</sup>) and CSLEX1 (sLe<sup>x</sup>) Abs as described (Chachadi et al. 2011; Chachadi et al. 2013). Finally, cells were re-suspended in 500  $\mu$ L of 0.5% paraformaldehyde and analyzed using a FACS Vantage (Becton Dickson San Jose, CA) equipped with 488 nm argon laser and Cell Quest-pro software. The unstained cells and cells incubated with secondary Ab alone served as negative and antibody controls, respectively.

#### Immunoprecipitation

For immunoprecipitation assays, cell lysates containing equal amounts of protein (500  $\mu$ g) were precleared with 20  $\mu$ L of protein A/L-coupled sepharose beads (50%, v/v) (Amersham, Little Chalfont, Buckinghamshire, UK) for 1 h at 4°C. The precleared samples were incubated with 5  $\mu$ g of anti-MUC1, anti-MUC4, anti-MUC16, anti-sLe<sup>a</sup> or anti-sLe<sup>x</sup> Ab overnight at 4°C. The immune complexes were mixed with 20  $\mu$ L of protein A-coupled (protein L-coupled in case of sLe<sup>x</sup>) sepharose beads (50% v/v) and rotated overnight at 4°C. The trapped immune complexes were subjected to western blot analysis with sLe<sup>a</sup>, sLe<sup>x</sup> or MAA staining. Immunoprecipitates obtained with non-specific mouse IgG and IgM Abs served as negative controls.

#### In situ PLA

*In situ* PLA was performed in CFT1 and H292 cells to analyze association of sLe<sup>a</sup> and sLe<sup>x</sup> with MUC1 and MUC16 according to the previously described protocol with minor modifications (Chachadi et al. 2013). In brief, cells were grown on cover slip for 48 h and fixed with 4% cold paraformaldehyde/PBS at RT for 30 min, washed thrice with PBS and blocked for 1 h in 3% BSA. Cells were incubated with the indicated Ab pairs (Figure 2B) (1 : 50 in PBS with 3% BSA) at 37°C for 1 h and washed thrice (5 min each) with PBST. Oligonucleotide-conjugated donkey anti-mouse IgG minus (for sLe<sup>a</sup>), donkey anti-mouse IgM minus (for sLe<sup>x</sup>) and donkey anti-rabbit plus (for MUC1 and MUC16) PLA secondary probes were added at appropriate dilutions prepared in PBS with 3% BSA and the cells were incubated in a humidified chamber for 1 h at 37°C. PLA secondary donkey anti-mouse IgM minus probe was prepared using Duolink<sup>®</sup> In Situ Probenmaker Minus kit (DUO92010) from Sigma-Aldrich (St. Louis, MO) while other probes were directly purchased. The PLA assay was performed using the Duolink PLA kit (Olink Bioscience cat# LNK-92101-KI01, Uppsala, Sweden) according to manufacturer's instruction. Briefly, connector oligonucleotides were hybridized and circularized by ligation for 30 min at 37°C. After thorough washing, the cells were incubated with DNA polymerase for 100 min at 37°C to produce rolling circle amplification products tagged with a red fluorescence probe. Cells were stained with DAPI for nuclei and images were obtained from EVOS<sup>®</sup> FL digital inverted fluorescence microscope and photographed at 60 $\times$  magnification. PLA signals (red fluorescent spots) were quantified by counting all signals obtained from three different images divided by the number of cells in those three images to obtain average signals/cell.

#### PNGase F or mixed glycosidase treatments

The MUC1 and MUC16 immunoprecipitates were boiled (100°C) for 10 min in 0.5% SDS and 1%  $\beta$ -mercaptoethanol and then treated with PNGase F (Sigma) (5 U/mg protein) in 50 mM phosphate, pH 7.5

containing 1% NP-40 at 37°C for 16 h. The PNGase F activity was validated using transferrin as previously described (Chachadi et al. 2011). The immunoprecipitate was also treated with mixed glycosidases containing neuraminidase,  $\beta$ 1-4galactosidase/ $\beta$ -N-acetylglucosaminidase and O-glycanase (ProZyme, Inc., San Leandro, CA). The samples treated with or without glycosidases were analyzed by sLe<sup>a</sup> and sLe<sup>x</sup> western blotting. Untreated samples served as the negative controls. For MAA detection, glycoproteins in the sLe<sup>a</sup> and sLe<sup>x</sup> immunoprecipitates were resolved by SDS-PAGE and blotted on to PVDF membrane as described earlier. Then, membranes were blocked with TBS containing 3% BSA (60 min), followed by incubation with 1  $\mu$ g/mL of biotin-conjugated MAA (in TBS containing 1 mM MgCl<sub>2</sub>, 1 mM MnCl<sub>2</sub> and 1 mM CaCl<sub>2</sub>, pH 7.5) for 60 min. The treated membranes were washed with TBS containing 0.05% Tween 20 and then incubated with streptavidin-HRP (Pierce) (1 : 20,000) for 30 min. Finally, the blots were washed (5 $\times$ ) with TBS containing 0.05% Tween 20 and then developed using ECL.

### Quantitative gene expression analysis of glycosyltransferases and mucins by qRT-PCR

qRT-PCR analyses of the mRNAs of the genes encoding the GTs involved in the synthesis of sialyl Lewis antigens and genes encoding membrane-bound mucins were performed in BEAS-2B, CFT1, A549 and H292 cell types according to the protocol described previously (Chachadi et al. 2011; Chachadi et al. 2013). The results were expressed as % of the target gene relative to that (100%) of *GAPDH* and plotted as mean expression  $\pm$  SD. Primer sequences used for the study can be found in earlier publications (Chachadi et al. 2011, 2013; Radhakrishnan et al. 2011).

### siRNA transient transfection

Pool of 3 siRNAs targeting each of *B3GALT5*, *FUT4* and *FUT5*, and scrambled siRNA were purchased from Santa Cruz Biotechnology. CFT1 and H292 cells at 50% confluence were transfected for 8 h in OPTI-MEM<sup>®</sup> reduced serum medium containing 50 nM siRNAs using Lipofectamine RNAi MAX reagent (Invitrogen, Carlsbad, CA) according to the manufacturer's recommendation. The medium was then replaced with a fresh DMEM medium containing 10% FBS for H292 and BEGM supplemented with hormones and growth factor for CFT1 as mentioned in previous section. After cultured for 72 h, the transfected cells were analyzed for *B3GALT5*, *FUT4* and *FUT5* mRNA by qRT-PCR for successful knockdown as mentioned above. Effects of gene knockdown on the expression of sLe<sup>a</sup> and sLe<sup>x</sup> were determined by western blotting as described in previous section.

### Wound healing assay

A monolayer scratch assay as described previously (Cory 2011) was used to compare the migratory ability of H292 cells after knocking down the *B3GALT5* or *FUT5* gene. Knockdown of *B3GALT5* and *FUT5* was performed. After 72 h of siRNA treatment, H292 cells were dislodged from T25 culture flasks with a non-enzymatic cell stripper and seeded to six-well tissue culture dishes and grown to confluence. Each confluent monolayer was then wounded linearly using a sterile 200  $\mu$ L pipette tip and washed three times with PBS. Thereafter, migration was observed and photographed at regular intervals of 0, 12, 24 and 48 h. The distance of cells migrating into the cell-free zone was acquired under a phase contrast microscope and analyzed by ImageJ software. The distances of cell migration were calculated by subtracting the distance between the scratch's

edges (wound closure) at indicated time from the distance measured at 0 h.

### Parallel plate flow chamber adhesion assay

Recombinant human E- and P-selectins/IgG Fc chimeras were purified and coated to cover slips as described (Chachadi et al. 2011; Ali et al. 2012). The siRNA-treated H292 cells that tethered to and rolled on E- and P-selectin-coated cover slips were measured and compared with mock-treated cells by a parallel plate flow chamber assay as described (Wiese et al. 2009; Chachadi et al. 2011) and evaluated according to Krull et al. (1999). Tethering was determined by counting the number of cells that adhered to slides over the first 2–3 s of continuous shear flow at a given field of view and remained tethered for at least 3 s while rolling was defined as five times cell diameters of forward movement which was assessed at 1.0 dyne/cm<sup>2</sup>. Tethering or rolling was expressed as number of tethered or rolled cells/high-power field during a 10-m observation period.

### Statistical analysis

Student's *t*-test was used for statistical analysis; *P*-values of <0.05 were considered statistically significant. SigmaPlot software (Systat Software, San Jose, CA) was used for all the graphing and statistical analyses.

### Funding

This work is supported in part by the Office of Research and Development, Medical Research Service, Department of Veterans Affairs (VA 111BX000985), the National Institutes of Health (2RO1HL48282), the State of Nebraska (LB506) (to P.W.C.) and the Alcohol & Education Research Council (hfygr667789).

### Acknowledgements

We thank the Flow Cytometry Research Facility Core supported by the Nebraska Research Initiatives and the Eppley Cancer Center.

### Conflict of interest statement

None declared.

### Abbreviations

Abs, antibodies; BEGM, bronchial epithelial growth medium; BSA, bovine serum albumin; CNT, control; DMEM, Dulbecco's modified Eagle's medium; FBS, fetal bovine serum; Fuc, fucose; Gal, galactose; GlcNAc, N-acetylglucosamine; GT, glycosyltransferase; HRP, horseradish peroxidase; MAA, Maackia amurensis lectin; NeuAc, N-acetylneuraminic acid; PLA, proximity ligation assay; PNGase, peptide N-glycosidase; qRT-PCR, quantitative real-time polymerase chain reaction; sLe<sup>a</sup>, sialyl Lewis a; sLe<sup>x</sup>, sialyl Lewis x; TBS, tris buffered saline.

### References

- Ali MF, Chachadi VB, Petrosyan A, Cheng PW. 2012. Golgi phosphoprotein 3 determines cell binding properties under dynamic flow by controlling Golgi localization of core 2 N-acetylglucosaminyltransferase 1. *J Biol Chem*. 287(47):39564–39577.
- Amado M, Almeida R, Carneiro F, Lavery SB, Holmes EH, Nomoto M, Hollingsworth MA, Hassan H, Schwientek T, Nielsen PA, et al. 1998. A family of human  $\beta$ 3-galactosyltransferases: Characterization of four

- members of a udp-galactose: $\beta$ -n-acetyl-glucosamine/ $\beta$ -n-acetyl-galactosamine  $\beta$ -1,3-galactosyltransferase family. *J Biol Chem*. 273:12770–12778.
- Amado M, Almeida R, Schwientek T, Clausen H. 1999. Identification and characterization of large galactosyltransferase gene families: Galactosyltransferases for all functions. *Biochim Biophys Acta*. 1473(1):35–53.
- Bafna S, Kaur S, Batra SK. 2010. Membrane-bound mucins: The mechanistic basis for alterations in the growth and survival of cancer cells. *Oncogene*. 29(20):2893–2904.
- Barthel SR, Wiese GK, Cho J, Opperman MJ, Hays DL, Siddiqui J, Pienta KJ, Furie B, Dimitroff CJ. 2009. Alpha 1,3 fucosyltransferases are master regulators of prostate cancer cell trafficking. *Proc Natl Acad Sci USA*. 106(46):19491–19496.
- Brockhausen I. 2006. Mucin-type O-glycans in human colon and breast cancer: Glycodynamics and functions. *EMBO Rep*. 7(6):599–604.
- Carvalho AS, Harduin-Lepers A, Magalhaes A, Machado E, Mendes N, Costa LT, Matthiesen R, Almeida R, Costa J, Reis CA. 2010. Differential expression of alpha-2,3-sialyltransferases and alpha-1,3/4-fucosyltransferases regulates the levels of sialyl Lewis x and sialyl Lewis x in gastrointestinal carcinoma cells. *Int J Biochem Cell Biol*. 42(1):80–89.
- Cazet A, Julien S, Bobowski M, Burchell J, Delannoy P. 2010. Tumour-associated carbohydrate antigens in breast cancer. *Breast Cancer Res*. 12(3):204.
- Chachadi VB, Ali MF, Cheng PW. 2013. Prostatic cell-specific regulation of the synthesis of MUC1-associated sialyl Lewis a. *PLoS ONE*. 8(2):e57416.
- Chachadi VB, Cheng H, Klinkebiel D, Christman JK, Cheng PW. 2011. 5-Aza-2'-deoxycytidine increases sialyl Lewis X on MUC1 by stimulating beta-galactoside:alpha2,3-sialyltransferase 6 gene. *Int J Biochem Cell Biol*. 43(4):586–593.
- Chambers AF, Naumov GN, Varghese HJ, Nadkarni KV, MacDonald IC, Groom AC. 2001. Critical steps in hematogenous metastasis: An overview. *Surg Oncol Clin N Am*. 10(2):243–255, vii.
- Cory G. 2011. Scratch-wound assay. *Methods Mol Biol*. 769:25–30.
- Croce MV, Isla-Larrain M, Rabassa ME, Demichelis S, Colussi AG, Crespo M, Lacunza E, Segal-Eiras A. 2007. Lewis x is highly expressed in normal tissues: A comparative immunohistochemical study and literature revision. *Pathol Oncol Res*. 13(2):130–138.
- de Vries T, Knechtel RM, Holmes EH, Macher BA. 2001. Fucosyltransferases: Structure/function studies. *Glycobiology*. 11(10):119R–128R.
- de Vries T, Srnka CA, Palcic MM, Swiedler SJ, van den Eijnden DH, Macher BA. 1995. Acceptor specificity of different length constructs of human recombinant alpha 1,3/4-fucosyltransferases. Replacement of the stem region and the transmembrane domain of fucosyltransferase V by protein A results in an enzyme with GDP-fucose hydrolyzing activity. *J Biol Chem*. 270(15):8712–8722.
- Dimitroff CJ, Lechpammer M, Long-Woodward D, Kutok JL. 2004. Rolling of human bone-metastatic prostate tumor cells on human bone marrow endothelium under shear flow is mediated by E-selectin. *Cancer Res*. 64(15):5261–5269.
- Ellies LG, Sperandio M, Underhill GH, Yousif J, Smith M, Priatel JJ, Kansas GS, Ley K, Marth JD. 2002. Sialyltransferase specificity in selectin ligand formation. *Blood*. 100(10):3618–3625.
- Fernandez-Rodriguez J, Dwir O, Alon R, Hansson GC. 2001. Tumor cell MUC1 and CD43 are glycosylated differently with sialyl-Lewis a and x epitopes and show variable interactions with E-selectin under physiological flow conditions. *Glycoconj J*. 18(11–12):925–930.
- Fukuda M. 1996. Possible roles of tumor-associated carbohydrate antigens. *Cancer Res*. 56(10):2237–2244.
- Furukawa K, Sato T. 1999. Beta-1,4-galactosylation of N-glycans is a complex process. *Biochim Biophys Acta*. 1473(1):54–66.
- Groux-Degroote S, Krzewinski-Recchi MA, Cazet A, Vincent A, Lehoux S, Lafitte JJ, Van Seuninghen I, Delannoy P. 2008. IL-6 and IL-8 increase the expression of glycosyltransferases and sulfotransferases involved in the biosynthesis of sialylated and/or sulfated Lewisx epitopes in the human bronchial mucosa. *Biochem J*. 410(1):213–223.
- Harduin-Lepers A, Vallejo-Ruiz V, Krzewinski-Recchi MA, Samyn-Petit B, Julien S, Delannoy P. 2001. The human sialyltransferase family. *Biochimie*. 83(8):727–737.
- Hennet T. 2002. The galactosyltransferase family. *Cell Mol Life Sci*. 59(7):1081–1095.
- Hennet T, Dinter A, Kuhnert P, Mattu TS, Rudd PM, Berger EG. 1998. Genomic cloning and expression of three murine UDP-galactose: Beta-N-acetylglucosamine beta1,3-galactosyltransferase genes. *J Biol Chem*. 273(1):58–65.
- Holgersson J, Löfling J. 2006. Glycosyltransferases involved in type 1 chain and Lewis antigen biosynthesis exhibit glycan and core chain specificity. *Glycobiology*. 16(7):584–593.
- Homeister JW, Thall AD, Petryniak B, Maly P, Rogers CE, Smith PL, Kelly RJ, Gersten KM, Askari SW, Cheng G, et al. 2001. The alpha(1,3)fucosyltransferases FucT-IV and FucT-VII exert collaborative control over selectin-dependent leukocyte recruitment and lymphocyte homing. *Immunity*. 15:115–126.
- Huang MC, Zollner O, Moll T, Maly P, Thall AD, Lowe JB, Vestweber D. 2000. P-selectin glycoprotein ligand-1 and E-selectin ligand-1 are differentially modified by fucosyltransferases Fuc-TIV and Fuc-TVII in mouse neutrophils. *J Biol Chem*. 275:31353–31360.
- Ishiki S, Togayachi A, Kudo T, Nishihara S, Watanabe M, Kubota T, Kitajima M, Shiraishi N, Sasaki K, Andoh T, et al. 1999. Cloning, expression, and characterization of a novel UDP-galactose:beta-N-acetylglucosamine beta1,3-galactosyltransferase (beta3Gal-T5) responsible for synthesis of type 1 chain in colorectal and pancreatic epithelia and tumor cells derived therefrom. *J Biol Chem*. 274(18):12499–12507.
- Kannagi R. 2007. Carbohydrate antigen sialyl Lewis a – its pathophysiological significance and induction mechanism in cancer progression. *Chang Gung Med J*. 30(3):189–209.
- Kannagi R, Izawa M, Koike T, Miyazaki K, Kimura N. 2004. Carbohydrate-mediated cell adhesion in cancer metastasis and angiogenesis. *Cancer Sci*. 95(5):377–384.
- Kawarada Y, Ishikura H, Kishimoto T, Kato H, Yano T, Kato H, Yoshiki T. 2000. The role of sialylated Lewis antigens on hematogenous metastases of human pancreas carcinoma cell lines in vivo. *Pathol Res Pract*. 196(4):259–263.
- Kim YJ, Borsig L, Han HL, Varki NM, Varki A. 1999. Distinct selectin ligands on colon carcinoma mucins can mediate pathological interactions among platelets, leukocytes, and endothelium. *Am J Pathol*. 155(2):461–472.
- Kitagawa H, Paulson JC. 1993. Cloning and expression of human Gal beta 1,3(4)GlcNAc alpha 2,3-sialyltransferase. *Biochem Biophys Res Commun*. 194(1):375–382.
- Krull M, Klucken AC, Wuppermann FN, Fuhrmann O, Magerl C, Seybold J, Hippenstiel S, Hegemann JH, Jantos CA, Suttorp N. 1999. Signal transduction pathways activated in endothelial cells following infection with Chlamydia pneumoniae. *J Immunol*. 162(8):4834–4841.
- Laubli H, Borsig L. 2010. Selectins promote tumor metastasis. *Semin Cancer Biol*. 20(3):169–177.
- Li G, Sanders JM, Phan ET, Ley K, Sarembock IJ. 2005. Arterial macrophages and regenerating endothelial cells express P-selectin in atherosclerosis-prone apolipoprotein E-deficient mice. *Am J Pathol*. 167(6):1511–1518.
- Martinez M, Joffraud M, Giraud S, Baisse B, Bernimoulin MP, Schapira M, Spertini O. 2005. Regulation of PSGL-1 interactions with L-selectin, P-selectin, and E-selectin: Role of human fucosyltransferase-IV and -VII. *J Biol Chem*. 280:5378–5390.
- Nakayama F, Teraki Y, Kudo T, Togayachi A, Iwasaki H, Tamatani T, Nishihara S, Mizukawa Y, Shiohara T, Narimatsu H. 2000. Expression of cutaneous lymphocyte-associated antigen regulated by a set of glycosyltransferases in human T cells: Involvement of alpha1, 3-fucosyltransferase VII and beta1,4-galactosyltransferase I. *J Invest Dermatol*. 115(2):299–306.
- Nakayama T, Watanabe M, Katsumata T, Teramoto T, Kitajima M. 1995. Expression of sialyl Lewis(a) as a new prognostic factor for patients with advanced colorectal carcinoma. *Cancer*. 75(8):2051–2056.
- Niemelä R, Natunen J, Majuri ML, Maaheimo H, Helin J, Lowe JB, Renkonen O, Renkonen R. 1998. Complementary acceptor and site specificities of Fuc-TIV and Fuc-TVII allow effective biosynthesis of Sialyl-TriLex

- and related polyglucosamines present on glycoprotein counterreceptors of selectins, *J Biol Chem*. 273:4021–4026.
- Norden R, Nystrom K, Olofsson S. 2009. Activation of host antiviral RNA-sensing factors necessary for herpes simplex virus type 1-activated transcription of host cell fucosyltransferase genes FUT3, FUT5, and FUT6 and subsequent expression of sLe(x) in virus-infected cells. *Glycobiology*. 19(7):776–788.
- Okajima T, Fukumoto S, Miyazaki H, Ishida H, Kiso M, Furukawa K, Urano T, Furukawa K. 1999. Molecular cloning of a novel alpha2,3-sialyltransferase (ST3Gal VI) that sialylates type II lactosamine structures on glycoproteins and glycolipids. *J Biol Chem*. 274(17):11479–11486.
- Oriol R, Mollicone R, Cailleau A, Balanzino L, Breton C. 1999. Divergent evolution of fucosyltransferase genes from vertebrates, invertebrates, and bacteria. *Glycobiology*. 9(4):323–334.
- Padró M, Cobler L, Garrido M, de Bolós C. 2011. Down-regulation of FUT3 and FUT5 by shRNA alters Lewis antigens expression and reduces the adhesion capacities of gastric cancer cells. *Biochim Biophys Acta*. 1810(12):1141–1149.
- Paganuzzi M, Bobbio B, Marroni P, Filiberti R, Secco GB, Grossi CE. 2003. Prognostic role of serum sialyl Lewis x (CD15s) in colorectal cancer. *Oncology*. 65(1):52–59.
- Petrosyan A, Holzapfel MS, Muirhead DE, Cheng P-W. 2014. Restoration of compact Golgi morphology in advanced prostate cancer enhances susceptibility to galectin 1-induced apoptosis by modifying mucin O-glycan synthesis. *Mol Cancer Res*. 12(12):1704–1716.
- Radhakrishnan P, Chachadi V, Lin MF, Singh R, Kannagi R, Cheng PW. 2011. TNFalpha enhances the motility and invasiveness of prostatic cancer cells by stimulating the expression of selective glycosyl- and sulfotransferase genes involved in the synthesis of selectin ligands. *Biochem Biophys Res Commun*. 409(3):436–441.
- Remmers N, Anderson JM, Linde EM, DiMaio DJ, Lazenby AJ, Wandall HH, Mandel U, Clausen H, Yu F, Hollingsworth MA. 2013. Aberrant expression of mucin core proteins and o-linked glycans associated with progression of pancreatic cancer. *Clin Cancer Res*. 19(8):1981–1993.
- Rohfritsch PF, Joosten JA, Krzewinski-Recchi MA, Harduin-Lepers A, Laporte B, Juliant S, Cerutti M, Delannoy P, Vliegenthart JF, Kamerling JP. 2006. Probing the substrate specificity of four different sialyltransferases using synthetic beta-D-Galp-(1->4)-beta-D-GlcpNAc-(1->2)-alpha-D-Manp-(1->O) (CH(2))7CH3 analogues general activating effect of replacing N-acetylglucosamine by N-propionylglucosamine. *Biochim Biophys Acta*. 1760(4):685–692.
- Sasaki K, Watanabe E, Kawashima K, Sekine S, Dohi T, Oshima M, Hanai N, Nishi T, Hasegawa M. 1993. Expression cloning of a novel Gal beta (1-3/1-4) GlcNAc alpha 2,3-sialyltransferase using lectin resistance selection. *J Biol Chem*. 268(30):22782–22787.
- Shimodaira K, Nakayama J, Nakamura N, Hasebe O, Katsuyama T, Fukuda M. 1997. Carcinoma-associated expression of core 2 beta-1,6-N-acetylglucosaminyltransferase gene in human colorectal cancer: Role of O-glycans in tumor progression. *Cancer Res*. 57(23):5201–5206.
- Shinoda K, Tanahashi E, Fukunaga K, Ishida H, Kiso M. 1998. Detailed acceptor specificities of human alpha1,3-fucosyltransferases, Fuc-TVII and Fuc-TVI. *Glycoconj J*. 15(10):969–974.
- Sumikura S, Ishigami S, Natsugoe S, Miyazono F, Tokuda K, Nakajo A, Okumura H, Matsumoto M, Hokita S, Aikou T. 2003. Disseminated cancer cells in the blood and expression of sialylated antigen in gastric cancer. *Cancer Lett*. 200(1):77–83.
- Tsuji S. 1996. Molecular cloning and functional analysis of sialyltransferases. *J Biochem*. 120(1):1–13.
- Ugorski M, Laskowska A. 2002. Sialyl Lewis(a): A tumor-associated carbohydrate antigen involved in adhesion and metastatic potential of cancer cells. *Acta Biochim Pol*. 49(2):303–311.
- Weinstein J, de Souza-e-Silva U, Paulson JC. 1982. Purification of a Gal beta 1 to 4GlcNAc alpha 2 to 6 sialyltransferase and a Gal beta 1 to 3(4)GlcNAc alpha 2 to 3 sialyltransferase to homogeneity from rat liver. *J Biol Chem*. 257(22):13835–13844.
- Wen DX, Livingston BD, Medzihradzky KF, Kelm S, Burlingame AL, Paulson JC. 1992. Primary structure of Gal beta 1,3(4)GlcNAc alpha 2,3-sialyltransferase determined by mass spectrometry sequence analysis and molecular cloning. Evidence for a protein motif in the sialyltransferase gene family. *J Biol Chem*. 267(29):21011–21019.
- Wiese G, Barthel SR, Dimitroff CJ. 2009. Analysis of physiologic E-selectin-mediated leukocyte rolling on microvascular endothelium. *J Vis Exp*. (24). pii: 1009. doi:10.3791/1009.
- Yankaskas JR, Haizlip JE, Conrad M, Koval D, Lazarowski E, Paradiso AM, Rinehart CA Jr, Sarkadi B, Schlegel R, Boucher RC. 1993. Papilloma virus immortalized tracheal epithelial cells retain a well-differentiated phenotype. *Am J Physiol*. 264(5 Pt 1):C1219–C1230.