

RESEARCH

Open Access



Contribution of chronic diseases to the mild and severe disability burden in Belgium

Renata T. C. Yokota^{1,2*}, Johan Van der Heyden^{1,3}, Stefaan Demarest¹, Jean Tafforeau¹, Willma J. Nusselder⁴, Patrick Deboosere² and Herman Van Oyen^{1,3}

Abstract

Background: Population aging accompanied by an increased longevity with disability has raised international concern, especially due to its costs to the health care systems. Chronic diseases are the main causes of physical disability and their simultaneous occurrence in the population can impact the disablement process, resulting in different severity levels. In this study, the contribution of chronic diseases to both mild and severe disability burden in Belgium was investigated.

Methods: Data on 21 chronic diseases and disability from 35,799 individuals aged 15 years or older who participated in the 1997, 2001, 2004, or 2008 Belgian Health Interview Surveys were analysed. Mild and severe disability were defined based on questions related to six activities of daily living and/or mobility limitations. To attribute disability by severity level to selected chronic diseases, multiple additive hazard models were fitted to each disability outcome, separately for men and women.

Results: A stable prevalence of mild (5 %) and severe (2–3 %) disability was observed for the Belgian population aged 15 years or older between 1997 and 2008. Arthritis was the most important contributor in women with mild and severe disability. In men, low back pain and chronic respiratory diseases contributed most to the mild and severe disability burden, respectively. The contribution also differed by age: for mild disability, depression and chronic respiratory diseases were important contributors among young individuals, while heart attack had a large contribution for older individuals. For severe disability, neurological diseases and stroke presented a large contribution in young and elderly individuals, respectively.

Conclusions: Our results indicate that the assessment of the contribution of chronic diseases on disability is more informative if different levels of disability are taken into consideration. The identification of diseases which are related to different levels of disability – mild and severe – can assist policymakers in the definition and prioritisation of strategies to tackle disability, involving prevention, rehabilitation programs, support services, and training for disabled individuals.

Keywords: Severe disability, Mild disability, Activity of daily living, Mobility limitations, Chronic diseases, Belgium

Background

Information on disability is considered essential to understand and respond to the global phenomenon of population aging, especially due to its economic costs and impact in the quality of life of individuals. Chronic diseases are known to be the main cause of physical disability [1] and to reduce the autonomy of individuals in

performing basic activities of daily living (ADL) [2]. The simultaneous occurrence of chronic diseases in individuals can have a different impact in the disablement process, resulting in different disability severity levels, which ranges from difficulty to inability to perform a task without assistance, i.e. dependence [3–7].

Several methods have been proposed to assess the disability burden in a population. For cross-sectional data, Nusselder and Looman recently proposed the attribution method to assess the disability burden [8, 9]. This method is based on multiple additive hazard models,

* Correspondence: renata.yokota@wiv-isp.be

¹Department of Public Health and Surveillance, Scientific Institute of Public Health, Rue Juliette Wytmanstraat 14, Brussels 1050, Belgium

²Department of Social Research, Interface Demography, Vrije Universiteit Brussel, Brussels 1050, Belgium

Full list of author information is available at the end of the article

which partition the disability prevalence into the additive contribution of diseases and conditions in the presence of comorbidity [9, 10].

Although the method has been widely used to assess the disability burden in several countries [8, 10–16], to our knowledge, the contribution of chronic diseases to different disability severity levels was not yet investigated. In our previous study, we determined the major contributors of the disability burden without distinguishing different disability severity levels in Belgium [16]. However, this distinction can be useful to assist policy makers in the definition of strategies to reduce the disability burden, as the assessment of dependence to perform ADLs can predict institutionalization, the need of home care services, and mortality [2, 6, 17].

The aim of this study was to assess the contribution of selected chronic diseases to the mild and severe disability burden in Belgium. Here, mild disability was considered a measure of difficulty in performing at least one ADL or mobility task, while severe disability was considered a measurement of dependence – inability to perform at least one ADL without assistance – or severe restriction in mobility.

Methods

Study population

The Belgian Health Interview Survey (BHIS) data from 1997, 2001, 2004, and 2008 were used in this analysis. The BHIS is a national household survey, repeated every 3–5 years, commissioned by all the ministers responsible for public health at the federal, regional, and community levels in Belgium. It is conducted by the Scientific Institute of Public Health in collaboration with Statistics Belgium [18]. A multistage sampling design with geographical stratification (regions and provinces) and clustering (municipalities and households) was applied to obtain a representative sample of the Belgian population, including elderly individuals living in nursing homes and homes for the elderly. Proxy interviews were mandatory for individuals aged < 15 years and allowed for individuals with severe mental or physical illness not able to reply themselves, if the selected person was not reachable for more than 1 month, and for individuals who refused to participate but allowed proxy answers. Each survey included approximately 10,000 individuals. The response rate was 59 % in 1997, 61 % in 2001, 61 % in 2004, and 55 % in 2008. Sampling weights were used to take into account the complex sample design. The data quality control was implemented in the fieldwork, data entry, and statistical analysis [19]. More details about the surveys methodology can be found elsewhere [18, 20].

This analysis was restricted to individuals aged 15 years or older, as the disability questions were restricted to this subpopulation. The selection of individuals included

in this study is presented in Fig. 1. Subjects with missing information on disability or selected diseases ($n = 3,788$; 10 %) were excluded. In total, 35,799 individuals were included in the analysis (Fig. 1).

Mild and severe disability

The definition of disability was based on self-reported questions about ADL and mobility limitations included in the face-to-face questionnaire in the four BHIS. For mobility limitations, the question “What is the furthest you can walk on your own without stopping and without severe discomfort?” was analysed, with possible answers: “a. Only a few steps”, “b. More than few steps, but less than 200 m”, or “c. 200 m or more”.

Six ADLs were included in the disability indicator: getting in and out of bed, getting in and out of chair, dressing and undressing, washing hands and face, feeding and cutting up food, and using the toilet. These questions are part of the instrument to measure disability proposed by the World Health Organization (WHO) [21]. Although urinary incontinence is also included in the set of questions recommended by the WHO [21], we did not include it in our disability definition, as it may exist without physical limitations and, therefore, it is no longer considered as ADL disability [6].

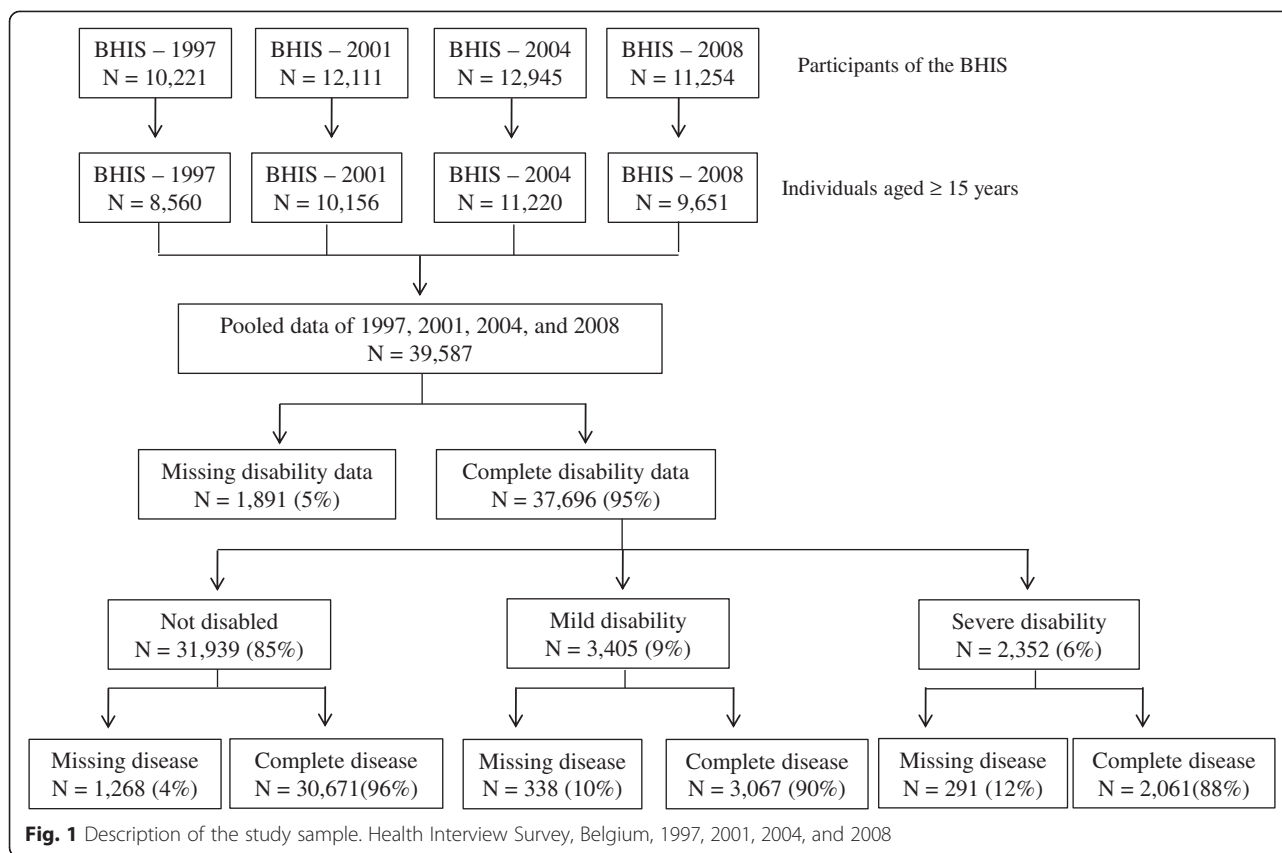
In the 1997, 2001, and 2004 BHIS, the questions “Can you ... (ADL) on your own?”, with possible answers “a. Yes, without difficulty”, “b. Yes, with some difficulty”, “c. I only ... (ADL) with someone to help me” were analysed. In 2008, the format of the ADL questions slightly changed, with one main question included before the list of ADLs: “Do you usually have difficulty doing any of these activities by yourself?” and one extra option of answer was included: “a. No difficulty”, “b. Yes, some difficulty”, “c. Yes, a lot of difficulty”, “d. I can’t achieve it by myself”.

A person was considered mildly disabled if he/she answered “b” to the mobility question or to at least one ADL question; and severely disabled if the answer was “a” to the mobility question or “c” to at least one ADL question in 1997, 2001, and 2004, or “c” or “d” to at least one ADL question in 2008.

As described above, the mild disability definition can be considered a measure of difficulty while the severe disability definition can be considered a measure of dependence.

Chronic diseases

Data on self-reported chronic diseases in the year preceding the interview were collected through a face-to-face interview in the BHIS. In this analysis, 21 chronic diseases or disease groups that were available in the four BHIS were included: chronic respiratory diseases (asthma, chronic bronchitis, and chronic pulmonary diseases), diabetes, cancer,



depression, chronic cystitis, heart attack, stroke, arthritis (rheumatoid arthritis and osteoarthritis), low back pain, osteoporosis, stomach ulcer, bowel diseases, liver diseases (hepatitis, cirrhosis, and other liver dysfunctions), gallstones, cataract, glaucoma, migraine, thyroid problems, skin diseases, chronic kidney diseases, and neurological diseases (epilepsy and Parkinson's disease).

Most of the diseases questions were not modified over the four BHIS waves. The main changes occurred for heart attack and low back pain. From 1997 to 2004, one question was included for "serious heart disease or heart attack". However, in 2008, this question was split into two: "myocardial infarction" and "coronary heart diseases (angina pectoris)". In this study, we grouped these two diseases, i.e. an individual was considered to have had a heart attack in the year preceding the interview if he/she answered "Yes" to the question of "serious heart disease or heart attack" in 1997–2004 or to at least to one of the questions – "myocardial infarction" or "coronary heart diseases (angina pectoris)" – in 2008.

In 1997, low back pain was described as "chronic spinal affection for longer than 3 months", while in 2001 and 2004 "lumbago, sciatica, and disc prolapse" was added to the 1997 question. Nonetheless, in 2008, the question changed to "low back disorder or other chronic back defect". The impact of the changes in the questions can

be observed in the disease prevalence by gender and BHIS year, shown in the Additional file 1.

Statistical analysis

Age and gender standardized disability prevalence per year using the direct standardization method [22] is presented to assess the disability prevalence trend for individuals aged 15 years or older in the study period.

The prevalence of disability by cause was estimated using the attribution method [11]. In this method, disability is attributed to disease and "background", taking into account that individuals can have more than one disease (comorbidity) and that disability can be present in individuals without any disease [9]. For instance, even if an individual reports a disease in the survey, this is not necessarily the cause of the disability. This disability that is not associated with the diseases included in the analysis is labelled "background" [11].

The background may be a result of the disability that is not associated with any disease, underreporting and underdiagnosed diseases in the survey, disability causes that occurred before the year preceding the interview (for example, permanent consequences of accidents, falls), and disability causes not included in the survey or analysis [8–10].

The main assumptions of the method are: the distribution of disability by cause is entirely explained by diseases that are still present at the time of the survey and by the background; the cause-specific disability rates for each disease were proportionally equal in the time preceding the survey; individuals from the same age groups are exposed to the same background rate; the causes of disability (diseases and background) act as independent competing causes; and the start of the time at risk for disability is the same for all causes [9].

The attribution method is based on a multiple additive hazards model [11], defined as shown in (1).

$$\begin{aligned}
 & Y_i \sim \text{Bernoulli}(\pi_i) \\
 & \pi_i = 1 - e^{-\eta_i} \\
 & \eta_i = \alpha_a + \sum_{d=1}^m \beta_{cd} \times X_{di}
 \end{aligned} \tag{1}$$

Where Y_i is the binary response (disability) variable for each individual i ; π_i is the estimated probability that individual i is disabled; e is the base of the natural logarithm; η_i is the total disability rate (linear predictor) for each individual i ; α_a is the background disability rate by age group $a(1, \dots, n)$; β_{cd} is the disease-specific disability rate (disabling impact); and X_{di} is the indicator variable for each disease d and individual i .

In model (1), the disease-specific disability rate is defined as $\beta_{cd} = \gamma_c \times \delta_d$, where γ_c is the age pattern, that varies across age group $c(1, \dots, k)$ but is constant across diseases; and δ_d is the disease effect, which differs across diseases, but not by age group. In other words, both the background and the diseases are allowed to vary by age. Hence, model (1) is a reduced rank regression (RRR) model with one rank [23]. The attribution of disability to chronic diseases and background depends on the disease prevalence (X_{di}) and on the disease-specific disability rate (β_{cd}) [10].

The total disability rate (η_i) is partitioned into background (α_a) and disease-specific disability rates (β_{cd}). The probability of individual i to be disabled due to disease d is defined as $D_{di} = \frac{\beta_{cd} \times X_{di}}{\eta_i} \times \pi_i$, i.e. the proportion of the disease-specific disability rate ($\beta_{cd} \times X_{di}$) in the total disability rate (η_i) multiplied by the probability of being disabled (π_i); and the probability of individual i to be disabled due to background is defined as $B_i = \frac{\alpha_a}{\eta_i} \times \pi_i$, i.e. the proportion of the background disability rate (α_a) in the total disability rate (η_i) multiplied by the probability of being disabled.

The total probability of being disabled for each individual i is obtained by the sum of the cause-specific probabilities of being disabled: B_i and D_{di} . The total number of disabled individuals by cause can be obtained by the sum of the cause-specific probabilities for each

individual in the sample. The prevalence of disability by cause is then obtained by dividing the number of disabled individuals for each cause by the total number of individuals in the sample.

For each disability outcome (mild and severe disability) separate models for men and women were fitted. The confidence intervals for the disease prevalence, parameter estimates of the models (background and disease-specific disability rates), and the prevalence of disability by cause were estimated by 1000 bootstrap replicas sampled with replacement of equal sample size as the original data [24].

The diseases that were not significant in the additive hazards models for each disability outcome were grouped as “other diseases” and included in the final models. The following non-significant diseases were included in the “other diseases” group: kidney diseases, liver diseases, gall-stones, glaucoma, cataract, thyroid problems, skin diseases, and migraine.

The multiple additive hazard models and the attribution of disability to chronic diseases were performed with the software developed by Nusselder and Looman [8, 9] in R, version 3.0.3 [25]. More details about the attribution method can be found in previous publications [8, 9, 11].

Ethics

The surveys were carried out by Statistics Belgium within the legal framework provided by the statistical law in Belgium. Therefore, the project was exempted from submission to an ethical committee, but it had to be approved by the High Statistical Council. The use of the data by external researchers is possible upon authorisation from the Belgian Privacy Commission.

Results

Characteristics of the study population

Table 1 shows detailed information of the study population. A higher proportion of females, elderly (≥ 65 years), and low educated (no diploma or primary school) individuals were observed among mildly and severely disabled subjects compared to individuals without disability. Proxy interviews represented 9 % of the total number of interviews, reaching 29 % in the individuals with severe disability. The hospitalization rate in the 2004 and 2008 BHIS was 12.5 %, with an increasing trend with disability severity. Mobility limitation was the most frequent limitation, with increasing proportion according to disability severity level. For example, the proportion of mobility limitation was 77 % in severely disabled individuals and 65 % in mildly disabled individuals. The most common ADL limitations among individuals with mild disability were transfer in and out of bed (39.8 %) and transfer in and out of chair (35.5 %) while for severely disabled

Table 1 Characteristics of the study participants. Health Interview Survey, Belgium, 1997, 2001, 2004, and 2008

| Characteristic | Total | | Not disabled | | Mild disability | | Severe disability | |
|-----------------------------------|-------|----------------|--------------|----------------|-----------------|----------------|-------------------|----------------|
| | N | % ^a | N | % ^a | N | % ^a | N | % ^a |
| Gender (female) | | | | | | | | |
| Male | 17019 | 47.5 | 15201 | 49.6 | 1177 | 38.4 | 641 | 31.1 |
| Female | 18780 | 52.5 | 15470 | 50.4 | 1890 | 61.6 | 1420 | 68.9 |
| Age group (years) | | | | | | | | |
| 15–54 | 22486 | 62.8 | 21538 | 70.2 | 677 | 22.1 | 271 | 13.1 |
| 55–64 | 4490 | 12.5 | 3916 | 12.8 | 424 | 13.8 | 150 | 7.3 |
| 65–79 | 5634 | 15.7 | 4005 | 13.1 | 1097 | 35.8 | 532 | 25.8 |
| ≥80 | 3189 | 8.9 | 1212 | 4.0 | 869 | 28.3 | 1108 | 53.8 |
| Survey year | | | | | | | | |
| 1997 | 7926 | 22.1 | 7085 | 23.1 | 586 | 19.1 | 255 | 12.4 |
| 2001 | 9175 | 25.6 | 8130 | 26.5 | 688 | 22.4 | 357 | 17.3 |
| 2004 | 9977 | 27.9 | 8293 | 27.0 | 971 | 31.7 | 713 | 34.6 |
| 2008 | 8721 | 24.4 | 7163 | 23.4 | 822 | 26.8 | 736 | 35.7 |
| Education level | | | | | | | | |
| Tertiary | 11602 | 32.4 | 10711 | 34.9 | 615 | 20.1 | 276 | 13.4 |
| Secondary | 14145 | 39.5 | 12280 | 40.0 | 1194 | 38.9 | 671 | 32.6 |
| Primary | 5603 | 15.7 | 3737 | 12.2 | 1026 | 33.5 | 840 | 40.8 |
| No diploma | 512 | 1.4 | 304 | 1.0 | 105 | 3.4 | 103 | 5.0 |
| No information | 3937 | 11.0 | 3639 | 11.9 | 127 | 4.1 | 171 | 8.3 |
| Proxy interview | 3167 | 8.8 | 2339 | 7.6 | 226 | 7.4 | 602 | 29.2 |
| Hospitalization rate ^b | 2329 | 12.5 | 1521 | 9.8 | 373 | 20.8 | 435 | 30.2 |
| Mobility limitation ^c | 3797 | 10.6 | - | - | 2001 | 65.2 | 1592 | 77.2 |
| ADL limitation ^c | | | | | | | | |
| Transfer in/out of bed | 2603 | 7.2 | - | - | 1220 | 39.8 | 731 | 35.5 |
| Transfer in/out of chair | 2378 | 6.7 | - | - | 1089 | 35.5 | 557 | 27.0 |
| Dressing/undressing | 2355 | 6.6 | - | - | 942 | 30.7 | 864 | 41.9 |
| Washing hands and face | 1171 | 3.3 | - | - | 255 | 8.3 | 508 | 24.6 |
| Feeding | 1151 | 3.2 | - | - | 265 | 8.6 | 492 | 23.9 |
| Using the toilet | 1210 | 3.4 | - | - | 251 | 8.2 | 511 | 24.8 |

^aThe percentages are not weighted: they do not represent the prevalence, but the proportion in the study population

^bInpatient hospitalization in the 12 months preceding the interview. Information available only for the 2004 and 2008 BHIS (N = 18,698)

^cThe proportions do not add to 100 %, as an individual can have more than one ADL and/or mobility limitation

individuals, dressing and undressing (41.9 %) and transfer in and out of bed (35.5 %) were the most frequent ADL limitations.

Age and gender standardized disability prevalence

The age and gender standardized disability prevalence was higher for mild disability than for severe disability in the four BHIS (Fig. 2). However, no difference was observed for mild and severe disability over time across the four BHIS: the prevalence of mild disability varied from 5.1 % (95 % CI = 4.4 %; 6.0 %) in 1997 to 5.0 % (95 % CI = 4.3 %; 5.8 %) in 2008 and the prevalence of severe

disability was 1.9 % (95 % CI = 1.5 %; 2.4 %) in 1997 and 2.8 % (95 % CI = 2.3 %; 3.3 %) in 2008 (Fig. 2).

Disease prevalence

The attribution of disability to diseases and background is a function of two components: the disease prevalence and disease-specific disability rate. In general, the prevalence of chronic diseases was higher in individuals with mild or severe disability compared to non-disabled individuals (Tables 2 and 3). Arthritis and back pain were among the most prevalent diseases in men and women across all age groups and disability severity levels.

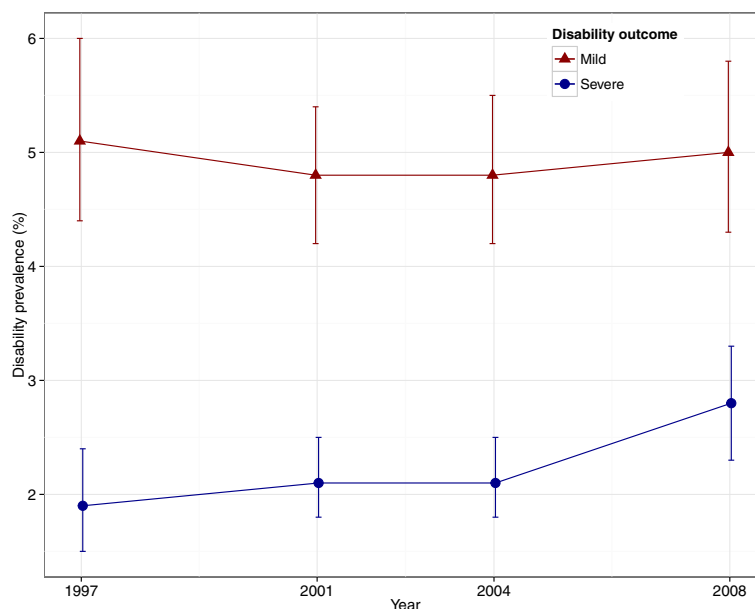


Fig. 2 Age and gender standardized prevalence of mild and severe disability. Health Interview Survey, Belgium, 1997, 2001, 2004, and 2008

In disabled men, chronic respiratory diseases had a high prevalence in all age groups. For the youngest disabled men (15–54 years), depression and migraine were also among the most prevalent diseases. For instance, the prevalence of depression in mildly disabled young men was six times higher than in non-disabled men and two times higher than in severely disabled men. For men aged 55 or older, heart attack also had a high prevalence. While the prevalence of neurological diseases was very low in non-disabled men (<1 %) it reached 6.3 and 7.7 % in mildly and severely disabled men, respectively.

For women aged 15–64 years, migraine and depression were among the most frequent diseases. The prevalence of osteoporosis and chronic respiratory diseases was also high among women aged 55 or older. The prevalence of stroke was low (≤ 2 %) in non-disabled women, reaching 2.7 and 9.5 % in mildly and severely disabled women, respectively.

Background disability rates

The background disability rates, i.e., the disability rate related to the causes of disability that were not included in the analysis, are presented in Fig. 3. The background disability rates tend to increase over age groups, with a steep increase for severely disabled individuals aged 85 years or older. Although the background disability rates were low for young individuals (15–54 years), the relative contribution of background to the total disability prevalence was high, comparable to the background contribution of the oldest old (≥ 80 years), especially among the severely disabled individuals (Fig. 4).

Disease-specific disability rates (disabling impacts)

The rank of the disabling impacts of the diseases (disease-specific disability rates) is presented in Tables 4 and 5 for men and women, respectively. Overall, the disease disability rates increased over age and were higher in women compared to men.

In men, neurological diseases had the highest impact on mild and severe disability in all age groups. For mildly disabled men, osteoporosis, stroke and cancer also had a great impact on disability, while for severely disabled men, stroke, chronic cystitis, and osteoporosis were among the most disabling diseases. Low disabling impacts were observed for diabetes, chronic cystitis, other diseases, and bowel diseases in mildly disabled men and for bowel diseases, stomach ulcer, and other diseases in severely disabled men (Table 4).

In women, the diseases with great impact on mild disability were stroke, arthritis, bowel diseases, and heart attack. In contrast, for women with severe disability, neurological diseases, stroke, diabetes, and cancer had the highest disabling impacts. Chronic cystitis and stomach ulcer were the least disabling diseases in mildly disabled and back pain and other diseases had a low impact on severe disability (Table 5).

Contribution of chronic diseases and background to the disability burden

The contribution of diseases and background to the disability burden and the disability prevalence is presented in Tables 6 and 7 for men and women, respectively. Although disability is present in all age groups, the prevalence of mild and severe disability is low for the youngest

Table 2 Prevalence of chronic diseases in men according to disability severity. Health Interview Survey, Belgium, 1997, 2001, 2004, and 2008

| Diseases | 15–54 years | | | 55–64 years | | | 65–79 years | | | ≥80 years | | |
|------------------------------|--------------|------|--------|--------------|------|--------|--------------|------|--------|--------------|------|--------|
| | Not disabled | Mild | Severe | Not disabled | Mild | Severe | Not disabled | Mild | Severe | Not disabled | Mild | Severe |
| <i>n</i> | 10806 | 284 | 131 | 1966 | 177 | 72 | 1905 | 440 | 188 | 524 | 276 | 250 |
| Chronic respiratory diseases | 4.9 | 13.4 | 10.2 | 7.9 | 22.0 | 30.3 | 12.3 | 30.1 | 28.6 | 11.8 | 25.3 | 36.3 |
| Diabetes | 1.1 | 3.5 | 4.9 | 5.8 | 10.3 | 27.7 | 10.1 | 14.6 | 8.4 | 8.0 | 11.6 | 14.7 |
| Cancer | 0.3 | 2.2 | 0.2 | 1.5 | 4.8 | 4.0 | 4.1 | 6.3 | 6.9 | 2.6 | 8.9 | 4.0 |
| Depression | 3.8 | 22.1 | 9.5 | 4.1 | 8.5 | 11.4 | 3.7 | 7.1 | 18.4 | 3.5 | 3.0 | 8.7 |
| Neurological diseases | 0.5 | 5.6 | 7.1 | 0.4 | 1.0 | 7.7 | 0.8 | 6.3 | 4.9 | 0.8 | 6.0 | 6.4 |
| Stomach ulcer | 2.2 | 10.0 | 5.2 | 3.9 | 16.1 | 6.1 | 4.6 | 8.9 | 7.2 | 4.2 | 9.1 | 4.6 |
| Bowel diseases | 1.7 | 8.4 | 6.6 | 2.8 | 5.6 | 6.4 | 3.6 | 4.4 | 6.0 | 3.9 | 5.3 | 9.7 |
| Chronic kidney diseases | 1.1 | 2.9 | 1.5 | 1.5 | 3.4 | 8.8 | 2.6 | 5.0 | 4.4 | 1.1 | 4.2 | 1.9 |
| Liver diseases | 0.5 | 4.1 | 0.0 | 0.9 | 0.5 | 0.5 | 0.7 | 4.4 | 0.5 | 0.3 | 1.2 | 1.4 |
| Gall-stones | 0.2 | 0.9 | 3.1 | 0.5 | 0.4 | 1.7 | 1.0 | 1.8 | 4.1 | 2.4 | 0.5 | 3.3 |
| Glaucoma | 0.8 | 2.8 | 2.8 | 1.9 | 3.9 | 5.2 | 3.3 | 7.2 | 4.5 | 4.3 | 5.2 | 8.5 |
| Cataract | 0.1 | 1.2 | 0.0 | 0.7 | 5.0 | 11.7 | 4.9 | 5.8 | 13.1 | 9.1 | 17.0 | 14.0 |
| Migraine | 5.7 | 19.7 | 9.8 | 4.5 | 8.7 | 12.6 | 2.9 | 4.4 | 4.3 | 3.0 | 5.5 | 6.6 |
| Thyroid problems | 0.7 | 2.3 | 2.7 | 2.2 | 5.5 | 1.0 | 2.6 | 4.3 | 7.5 | 2.1 | 3.0 | 2.0 |
| Chronic skin diseases | 2.8 | 5.1 | 5.5 | 2.5 | 7.2 | 6.2 | 4.0 | 2.3 | 5.1 | 3.1 | 4.9 | 9.0 |
| Chronic cystitis | 0.3 | 1.1 | 6.9 | 0.9 | 2.9 | 0.6 | 1.9 | 4.3 | 8.6 | 2.2 | 4.4 | 10.0 |
| Cardiovascular diseases | | | | | | | | | | | | |
| Heart attack | 0.9 | 6.9 | 6.3 | 6.7 | 24.7 | 18.4 | 12.1 | 22.7 | 25.9 | 16.4 | 31.0 | 21.9 |
| Stroke | 0.2 | 1.6 | 3.0 | 0.5 | 2.9 | 9.9 | 1.6 | 1.3 | 8.4 | 3.0 | 7.1 | 9.9 |
| Musculoskeletal diseases | | | | | | | | | | | | |
| Low back pain | 10.2 | 39.6 | 26.2 | 13.6 | 46.1 | 34.1 | 16.2 | 26.4 | 16.5 | 11.6 | 13.2 | 17.0 |
| Osteoporosis | 0.2 | 7.1 | 4.3 | 1.6 | 3.0 | 2.1 | 2.2 | 7.8 | 10.1 | 3.8 | 4.1 | 12.7 |
| Arthritis | 6.4 | 23.0 | 14.0 | 20.4 | 42.1 | 38.9 | 24.8 | 41.2 | 45.8 | 22.2 | 45.2 | 48.9 |

n: number of individuals

Arthritis: osteoarthritis and rheumatoid arthritis; chronic respiratory diseases: asthma, chronic bronchitis, chronic obstructive pulmonary disease, emphysema; neurological diseases: epilepsy and Parkinson's disease

individuals (15–54 years). The prevalence of mild disability was higher than severe disability for individuals aged 15–79 years. However, among the oldest old (≥80 years), different patterns were observed: no difference in the prevalence of mild and severe disability was observed among men, whilst in women the prevalence of severe disability reaches substantial levels (51 %), exceeding the prevalence of mild disability in this age group.

The relative background contribution was high for all disability severity levels and age groups in men and women (Fig. 4). For severely disabled individuals, more than 50 % of the disability burden was attributed to background in the youngest (15–54 years) and oldest (≥80 years) individuals (Fig. 4).

Men - mild disability

For mildly disabled men aged below 65 years, low back pain and arthritis were the main contributors to the

disability burden. These two musculoskeletal diseases accounted for 29 and 35 % for the disability burden in mildly disabled men aged 15–54 years and 55–64 years, respectively (Table 6 and Fig. 4). Depression and heart attack were also important contributors for mildly disabled men aged 15–54 years and 55–64 years, respectively. In mildly disabled men at older ages (≥65 years) arthritis, heart attack, low back pain, and chronic respiratory diseases contributed most to the disability burden. Stroke (<3 %) and bowel diseases (<0.5 %) showed a low contribution to the mild disability prevalence in men (Table 6 and Fig. 4).

Men - severe disability

In men with severe disability, chronic respiratory diseases were the main contributor to the disability burden in all age groups. Disability prevalence attributable to chronic respiratory diseases varied from 13 % in men

Table 3 Prevalence of chronic diseases in women according to disability severity. Health Interview Survey, Belgium, 1997, 2001, 2004, and 2008

| Diseases | 15–54 years | | | 55–64 years | | | 65–79 years | | | ≥80 years | | |
|------------------------------|--------------|------|--------|--------------|------|--------|--------------|------|--------|--------------|------|--------|
| | Not disabled | Mild | Severe | Not disabled | Mild | Severe | Not disabled | Mild | Severe | Not disabled | Mild | Severe |
| <i>n</i> | 10732 | 393 | 140 | 1950 | 247 | 78 | 2100 | 657 | 344 | 688 | 593 | 858 |
| Chronic respiratory diseases | 6.0 | 20.7 | 15.4 | 6.9 | 16.0 | 15.2 | 7.9 | 21.3 | 24.4 | 7.9 | 10.5 | 15.1 |
| Diabetes | 1.2 | 5.0 | 3.1 | 4.9 | 12.2 | 14.0 | 8.0 | 12.2 | 18.3 | 5.6 | 8.9 | 11.1 |
| Cancer | 0.7 | 3.7 | 3.2 | 2.1 | 6.1 | 5.7 | 4.1 | 4.2 | 8.1 | 1.9 | 2.9 | 6.0 |
| Depression | 6.0 | 21.7 | 14.5 | 7.2 | 24.0 | 21.3 | 6.7 | 14.4 | 17.6 | 3.9 | 7.2 | 11.2 |
| Neurological diseases | 0.6 | 2.0 | 12.0 | 1.2 | 3.2 | 3.2 | 0.5 | 2.2 | 8.4 | 1.6 | 1.8 | 6.5 |
| Stomach ulcer | 2.2 | 9.5 | 2.7 | 4.3 | 9.8 | 18.0 | 4.3 | 9.7 | 10.1 | 3.4 | 5.7 | 10.7 |
| Bowel diseases | 2.4 | 14.1 | 6.9 | 3.7 | 9.3 | 18.7 | 4.7 | 11.0 | 15.2 | 1.8 | 7.4 | 7.7 |
| Chronic kidney diseases | 1.1 | 3.7 | 1.1 | 1.3 | 1.3 | 6.6 | 0.8 | 5.7 | 6.7 | 0.9 | 1.6 | 4.0 |
| Liver diseases | 0.4 | 1.7 | 1.0 | 0.8 | 1.7 | 2.1 | 1.5 | 2.1 | 2.6 | 0.2 | 1.5 | 2.0 |
| Gall-stones | 0.6 | 1.5 | 0.7 | 1.2 | 1.4 | 4.1 | 1.9 | 2.5 | 8.0 | 1.5 | 4.0 | 3.4 |
| Glaucoma | 0.6 | 1.0 | 0.7 | 3.1 | 9.0 | 6.1 | 4.9 | 7.5 | 10.0 | 5.4 | 8.8 | 8.3 |
| Cataract | 0.2 | 1.1 | 0.3 | 1.0 | 1.6 | 8.0 | 8.2 | 12.8 | 12.1 | 16.5 | 15.0 | 15.4 |
| Migraine | 15.5 | 29.8 | 24.6 | 10.9 | 26.9 | 25.7 | 7.8 | 13.5 | 18.8 | 5.9 | 5.7 | 9.9 |
| Thyroid problems | 4.6 | 11.5 | 7.8 | 8.8 | 9.5 | 10.4 | 9.5 | 12.3 | 14.6 | 4.7 | 10.7 | 12.0 |
| Chronic skin diseases | 3.4 | 5.7 | 0.4 | 2.9 | 8.2 | 2.9 | 3.2 | 4.9 | 3.8 | 3.2 | 1.5 | 7.5 |
| Chronic cystitis | 1.9 | 4.4 | 4.0 | 2.4 | 3.5 | 9.9 | 2.3 | 7.2 | 8.0 | 2.9 | 5.7 | 8.7 |
| Cardiovascular diseases | | | | | | | | | | | | |
| Heart attack | 0.7 | 4.7 | 0.9 | 2.9 | 7.4 | 8.4 | 7.1 | 14.5 | 15.8 | 7.5 | 13.1 | 20.7 |
| Stroke | 0.1 | 2.7 | 4.0 | 0.9 | 2.7 | 5.1 | 1.0 | 4.0 | 7.6 | 2.1 | 2.6 | 9.5 |
| Musculoskeletal diseases | | | | | | | | | | | | |
| Low back pain | 9.7 | 40.8 | 18.9 | 16.2 | 46.4 | 40.6 | 19.7 | 35.4 | 39.1 | 15.0 | 26.7 | 23.9 |
| Osteoporosis | 1.4 | 4.3 | 7.7 | 9.9 | 16.8 | 28.7 | 16.8 | 27.2 | 27.6 | 13.4 | 25.4 | 28.1 |
| Arthritis | 7.6 | 37.8 | 20.5 | 27.8 | 63.6 | 61.6 | 41.5 | 67.7 | 70.0 | 40.9 | 58.8 | 65.8 |

n: number of individuals

Arthritis: osteoarthritis and rheumatoid arthritis; chronic respiratory diseases: asthma, chronic bronchitis, chronic obstructive pulmonary disease, emphysema; neurological diseases: epilepsy and Parkinson’s disease

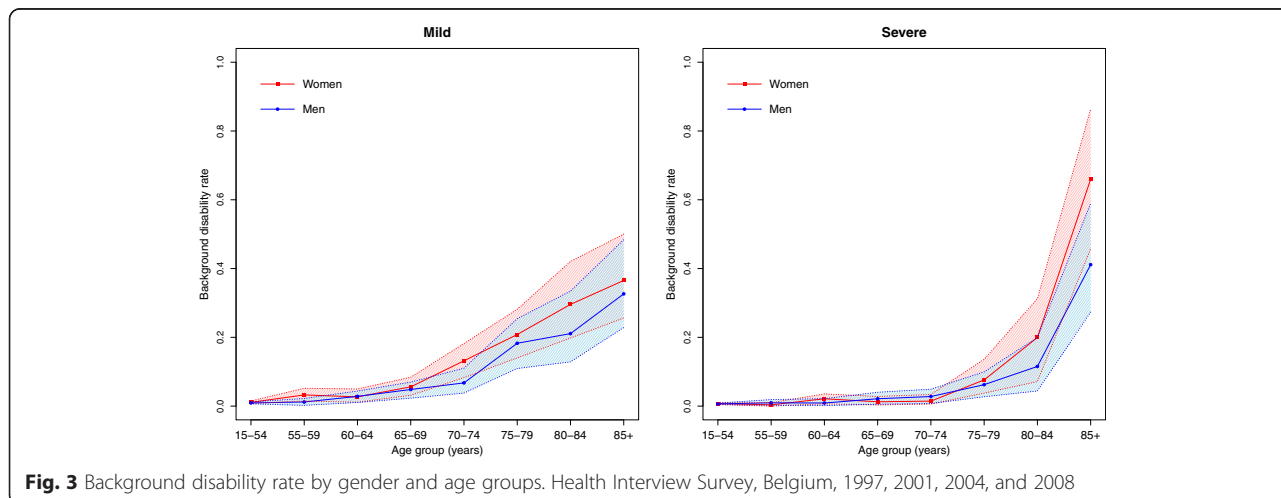


Fig. 3 Background disability rate by gender and age groups. Health Interview Survey, Belgium, 1997, 2001, 2004, and 2008

Table 4 Rank of disease-specific disability rates (disabling impacts) according to disability severity in men. Health Interview Survey, Belgium, 1997, 2001, 2004, and 2008

| Rank | Mild disability | | | | | | | | | | | |
|------|------------------------------|------|------------|------------------------------|-------|------------|------------------------------|-------|------------|------------------------------|-------|------------|
| | 15–54 years | | | 55–64 years | | | 65–79 years | | | ≥80 years | | |
| | Diseases | Rate | 95 % CI | Diseases | Rate | 95 % CI | Diseases | Rate | 95 % CI | Diseases | Rate | 95 % CI |
| 1 | Neurological diseases | 0.24 | 0.11;0.39 | Neurological diseases | 0.49 | 0.22;0.88 | Neurological diseases | 0.57 | 0.23;0.95 | Neurological diseases | 0.84 | 0.28;1.34 |
| 2 | Osteoporosis | 0.14 | 0.06;0.25 | Osteoporosis | 0.28 | 0.14;0.54 | Osteoporosis | 0.33 | 0.15;0.58 | Osteoporosis | 0.48 | 0.18;0.77 |
| 3 | Stroke | 0.08 | 0.00;0.19 | Stroke | 0.16 | 0.00;0.42 | Stroke | 0.19 | 0.00;0.42 | Stroke | 0.28 | 0.00;0.61 |
| 4 | Cancer | 0.07 | 0.01;0.15 | Cancer | 0.15 | 0.02;0.31 | Cancer | 0.18 | 0.02;0.32 | Cancer | 0.26 | 0.03;0.45 |
| 5 | Heart attack | 0.07 | 0.04;0.12 | Heart attack | 0.15 | 0.08;0.25 | Heart attack | 0.17 | 0.09;0.25 | Heart attack | 0.25 | 0.11;0.37 |
| 6 | Depression | 0.05 | 0.03;0.09 | Depression | 0.11 | 0.06;0.20 | Depression | 0.13 | 0.06;0.21 | Depression | 0.19 | 0.07;0.31 |
| 7 | Low back pain | 0.05 | 0.04;0.07 | Low back pain | 0.11 | 0.07;0.17 | Low back pain | 0.12 | 0.07;0.18 | Low back pain | 0.18 | 0.08;0.26 |
| 8 | Stomach ulcer | 0.05 | 0.02;0.08 | Stomach ulcer | 0.10 | 0.04;0.20 | Stomach ulcer | 0.12 | 0.04;0.22 | Stomach ulcer | 0.17 | 0.05;0.31 |
| 9 | Chronic respiratory diseases | 0.04 | 0.02;0.06 | Chronic respiratory diseases | 0.08 | 0.04;0.15 | Chronic respiratory diseases | 0.10 | 0.04;0.16 | Chronic respiratory diseases | 0.14 | 0.05;0.23 |
| 10 | Arthritis | 0.03 | 0.02;0.05 | Arthritis | 0.07 | 0.05;0.11 | Arthritis | 0.08 | 0.04;0.13 | Arthritis | 0.12 | 0.05;0.20 |
| 11 | Diabetes | 0.01 | 0.00;0.04 | Diabetes | 0.02 | 0.00;0.07 | Diabetes | 0.03 | 0.00;0.09 | Chronic cystitis | 0.10 | -0.02;0.27 |
| 12 | Chronic cystitis | 0.03 | -0.01;0.09 | Other diseases ^a | 0.01 | 0.00;0.04 | Other diseases ^a | 0.02 | 0.00;0.04 | Diabetes | 0.04 | -0.01;0.12 |
| 13 | Bowel diseases | 0.01 | -0.01;0.04 | Chronic cystitis | 0.06 | -0.01;0.19 | Chronic cystitis | 0.07 | -0.01;0.20 | Bowel diseases | 0.02 | -0.03;0.13 |
| 14 | Other diseases ^a | 0.01 | 0.00;0.01 | Bowel diseases | 0.01 | -0.02;0.09 | Bowel diseases | 0.01 | -0.02;0.10 | Other diseases ^a | 0.02 | -0.01;0.05 |
| Rank | Severe Disability | | | | | | | | | | | |
| | 55–64 years | | | 55–64 years | | | 65–79 years | | | ≥80 years | | |
| | Diseases | Rate | 95 % CI | Diseases | Rate | 95 % CI | Diseases | Rate | 95 % CI | Diseases | Rate | 95 % CI |
| 1 | Neurological diseases | 0.12 | 0.05;0.21 | Neurological diseases | 0.30 | 0.10;0.52 | Neurological diseases | 0.34 | 0.15;0.71 | Neurological diseases | 0.72 | 0.27;1.31 |
| 2 | Stroke | 0.09 | 0.03;0.20 | Stroke | 0.23 | 0.08;0.40 | Stroke | 0.26 | 0.13;0.49 | Stroke | 0.54 | 0.24;0.98 |
| 3 | Chronic cystitis | 0.07 | 0.00;0.20 | Chronic cystitis | 0.18 | 0.01;0.35 | Chronic cystitis | 0.20 | 0.01;0.42 | Chronic cystitis | 0.42 | 0.02;0.85 |
| 4 | Osteoporosis | 0.05 | 0.00;0.13 | Osteoporosis | 0.12 | 0.01;0.24 | Osteoporosis | 0.14 | 0.01;0.32 | Osteoporosis | 0.29 | 0.02;0.62 |
| 5 | Chronic respiratory diseases | 0.02 | 0.01;0.04 | Chronic respiratory diseases | 0.06 | 0.02;0.10 | Chronic respiratory diseases | 0.07 | 0.03;0.13 | Chronic respiratory diseases | 0.14 | 0.05;0.27 |
| 6 | Depression | 0.02 | 0.00;0.04 | Heart attack | 0.06 | 0.01;0.10 | Heart attack | 0.06 | 0.02;0.14 | Heart attack | 0.14 | 0.04;0.25 |
| 7 | Heart attack | 0.02 | 0.01;0.05 | Depression | 0.04 | 0.00;0.10 | Depression | 0.05 | 0.00;0.18 | Depression | 0.10 | 0.00;0.29 |
| 8 | Diabetes | 0.01 | 0.00;0.03 | Diabetes | 0.03 | 0.00;0.07 | Diabetes | 0.04 | 0.01;0.08 | Diabetes | 0.08 | 0.01;0.17 |
| 9 | Cancer | 0.01 | 0.00;0.03 | Low back pain | 0.02 | 0.00;0.04 | Low back pain | 0.03 | 0.01;0.05 | Low back pain | 0.06 | 0.02;0.11 |
| 10 | Low back pain | 0.01 | 0.00;0.02 | Arthritis | 0.02 | 0.00;0.03 | Arthritis | 0.02 | 0.00;0.05 | Arthritis | 0.04 | 0.00;0.10 |
| 11 | Bowel diseases | 0.01 | 0.00;0.02 | Cancer | 0.02 | 0.00;0.06 | Cancer | 0.02 | -0.01;0.08 | Cancer | 0.05 | -0.01;0.15 |
| 12 | Arthritis | 0.01 | 0.00;0.02 | Bowel diseases | 0.01 | -0.01;0.05 | Bowel diseases | 0.02 | -0.01;0.07 | Bowel diseases | 0.03 | -0.02;0.13 |
| 13 | Other diseases ^a | 0.00 | 0.00;0.01 | Other diseases ^a | 0.00 | -0.01;0.02 | Other diseases ^a | 0.00 | -0.01;0.03 | Other diseases ^a | 0.01 | -0.02;0.05 |
| 14 | Stomach ulcer | 0.00 | -0.01;0.00 | Stomach ulcer | -0.01 | -0.01;0.01 | Stomach ulcer | -0.01 | -0.02;0.01 | Stomach ulcer | -0.02 | -0.03;0.02 |

Arthritis: osteoarthritis and rheumatoid arthritis; chronic respiratory diseases: asthma, chronic bronchitis, chronic obstructive pulmonary disease, emphysema; neurological diseases: epilepsy and Parkinson's disease

^aOther diseases: kidney diseases, liver diseases, gall-stones, glaucoma, cataract, thyroid problems, skin diseases, and migraine

aged 55–64 years to 7 % in men aged 85 and older. In the youngest severely disabled men, low back pain, neurological diseases, and depression were also important contributors, while for men aged 55–79 years,

arthritis and heart attack were among the main contributors. For the oldest severely disabled men (≥80 years) heart attack and stroke were also important contributors to the disability burden (Table 6 and Fig. 4).

Table 5 Rank of disease-specific disability rates (disabling impacts) according to disability severity in women. Health Interview Survey, Belgium, 1997, 2001, 2004, and 2008

| Rank | Mild disability | | | | | | | | | | | |
|------|------------------------------|-------|------------|------------------------------|-------|------------|------------------------------|-------|------------|------------------------------|-------|------------|
| | 15–54 years | | | 55–64 years | | | 65–79 years | | | ≥80 years | | |
| | Diseases | Rate | 95 % CI | Diseases | Rate | 95 % CI | Diseases | Rate | 95 % CI | Diseases | Rate | 95 % CI |
| 1 | Stroke | 0.16 | 0.05;0.37 | Stroke | 0.28 | 0.09;0.59 | Stroke | 0.34 | 0.10;0.74 | Stroke | 0.50 | 0.14;1.02 |
| 2 | Arthritis | 0.08 | 0.05;0.11 | Arthritis | 0.13 | 0.09;0.18 | Arthritis | 0.16 | 0.12;0.22 | Arthritis | 0.24 | 0.14;0.31 |
| 3 | Heart attack | 0.07 | 0.02;0.12 | Bowel diseases | 0.12 | 0.04;0.21 | Bowel diseases | 0.15 | 0.06;0.29 | Bowel diseases | 0.22 | 0.07;0.39 |
| 4 | Bowel diseases | 0.07 | 0.03;0.13 | Heart attack | 0.11 | 0.04;0.20 | Heart attack | 0.14 | 0.05;0.24 | Heart attack | 0.20 | 0.06;0.35 |
| 5 | Low back pain | 0.06 | 0.04;0.08 | Low back pain | 0.10 | 0.06;0.15 | Low back pain | 0.12 | 0.08;0.18 | Low back pain | 0.18 | 0.09;0.26 |
| 6 | Chronic respiratory diseases | 0.05 | 0.03;0.07 | Diabetes | 0.09 | 0.03;0.16 | Diabetes | 0.11 | 0.03;0.20 | Diabetes | 0.16 | 0.04;0.29 |
| 7 | Diabetes | 0.05 | 0.01;0.10 | Chronic respiratory diseases | 0.08 | 0.04;0.13 | Chronic respiratory diseases | 0.10 | 0.05;0.17 | Chronic respiratory diseases | 0.15 | 0.07;0.24 |
| 8 | Cancer | 0.04 | 0.00;0.10 | Depression | 0.08 | 0.03;0.13 | Cancer | 0.09 | 0.01;0.20 | Depression | 0.14 | 0.05;0.23 |
| 9 | Depression | 0.04 | 0.02;0.07 | Cancer | 0.07 | 0.01;0.17 | Depression | 0.09 | 0.04;0.17 | Cancer | 0.13 | 0.01;0.28 |
| 10 | Other diseases ^a | 0.01 | 0.00;0.02 | Other diseases ^a | 0.01 | 0.00;0.03 | Other diseases ^a | 0.02 | 0.00;0.04 | Other diseases ^a | 0.02 | 0.00;0.05 |
| 11 | Neurological diseases | 0.04 | -0.01;0.13 | Neurological diseases | 0.07 | -0.02;0.23 | Neurological diseases | 0.08 | -0.02;0.29 | Neurological diseases | 0.12 | -0.03;0.38 |
| 12 | Osteoporosis | 0.01 | -0.01;0.03 | Osteoporosis | 0.02 | -0.02;0.05 | Osteoporosis | 0.02 | -0.02;0.07 | Osteoporosis | 0.03 | -0.03;0.10 |
| 13 | Stomach ulcer | 0.01 | -0.01;0.05 | Stomach ulcer | 0.02 | -0.02;0.08 | Stomach ulcer | 0.02 | -0.03;0.11 | Stomach ulcer | 0.03 | -0.04;0.14 |
| 14 | Chronic cystitis | -0.01 | -0.01;0.03 | Chronic cystitis | -0.02 | -0.02;0.05 | Chronic cystitis | -0.02 | -0.03;0.06 | Chronic cystitis | -0.03 | -0.04;0.08 |
| Rank | Severe Disability | | | | | | | | | | | |
| | 15–54 years | | | 55–64 years | | | 65–79 years | | | ≥80 years | | |
| | Diseases | Rate | 95 % CI | Diseases | Rate | 95 % CI | Diseases | Rate | 95 % CI | Diseases | Rate | 95 % CI |
| 1 | Neurological diseases | 0.12 | 0.04;0.27 | Neurological diseases | 0.22 | 0.11;0.45 | Neurological diseases | 0.77 | 0.35;1.24 | Neurological diseases | 1.61 | 0.94;3.12 |
| 2 | Stroke | 0.09 | 0.03;0.19 | Stroke | 0.17 | 0.07;0.34 | Stroke | 0.59 | 0.25;0.89 | Stroke | 1.23 | 0.68;2.26 |
| 3 | Diabetes | 0.02 | 0.01;0.03 | Diabetes | 0.03 | 0.01;0.07 | Diabetes | 0.11 | 0.04;0.18 | Diabetes | 0.22 | 0.10;0.46 |
| 4 | Cancer | 0.02 | 0.00;0.05 | Cancer | 0.03 | 0.00;0.10 | Cancer | 0.10 | 0.00;0.26 | Cancer | 0.22 | 0.01;0.70 |
| 5 | Chronic respiratory diseases | 0.01 | 0.00;0.02 | Chronic cystitis | 0.03 | 0.00;0.08 | Chronic cystitis | 0.09 | 0.01;0.22 | Chronic cystitis | 0.19 | 0.03;0.57 |
| 6 | Depression | 0.01 | 0.00;0.02 | Bowel diseases | 0.03 | 0.00;0.07 | Bowel diseases | 0.09 | 0.00;0.20 | Bowel diseases | 0.19 | 0.01;0.50 |
| 7 | Chronic cystitis | 0.01 | 0.00;0.04 | Arthritis | 0.03 | 0.01;0.05 | Arthritis | 0.09 | 0.04;0.12 | Stomach ulcer | 0.18 | 0.00;0.50 |
| 8 | Heart attack | 0.01 | 0.00;0.03 | Depression | 0.02 | 0.00;0.05 | Depression | 0.08 | 0.01;0.16 | Arthritis | 0.18 | 0.10;0.35 |
| 9 | Low back pain | 0.01 | 0.00;0.02 | Heart attack | 0.02 | 0.00;0.05 | Stomach ulcer | 0.08 | 0.00;0.19 | Depression | 0.16 | 0.02;0.42 |
| 10 | Osteoporosis | 0.01 | 0.00;0.02 | Osteoporosis | 0.02 | 0.00;0.04 | Heart attack | 0.07 | 0.00;0.15 | Heart attack | 0.14 | 0.00;0.42 |
| 11 | Stomach ulcer | 0.01 | 0.00;0.03 | Stomach ulcer | 0.02 | 0.00;0.07 | Chronic respiratory diseases | 0.05 | 0.01;0.12 | Osteoporosis | 0.11 | 0.02;0.26 |
| 12 | Bowel diseases | 0.01 | 0.00;0.03 | Chronic respiratory diseases | 0.01 | 0.00;0.04 | Low back pain | 0.05 | 0.01;0.09 | Chronic respiratory diseases | 0.10 | 0.01;0.30 |
| 13 | Arthritis | 0.01 | 0.00;0.03 | Low back pain | 0.01 | 0.00;0.03 | Osteoporosis | 0.05 | 0.01;0.10 | Low back pain | 0.10 | 0.01;0.23 |
| 14 | Other diseases ^a | 0.00 | 0.00;0.01 | Other diseases ^a | 0.00 | 0.00;0.01 | Other diseases ^a | 0.01 | -0.01;0.03 | Other diseases ^a | 0.02 | -0.02;0.10 |

Arthritis: osteoarthritis and rheumatoid arthritis; chronic respiratory diseases: asthma, chronic bronchitis, chronic obstructive pulmonary disease, emphysema; neurological diseases: epilepsy and Parkinson's disease

^aOther diseases: kidney diseases, liver diseases, gall-stones, glaucoma, cataract, thyroid problems, skin diseases, and migraine

Table 6 Rank of absolute contribution of diseases and background to the prevalence of disability, according to disability severity in men. Health Interview Survey, Belgium, 1997, 2001, 2004, and 2008

| Rank | Mild disability | | | | | | | | | | | |
|------|------------------------------|------|------------|------------------------------|------|------------|------------------------------|-------|-------------|------------------------------|-------|-------------|
| | 15–54 years | | | 55–64 years | | | 65–79 years | | | ≥80 years | | |
| | Diseases | % | 95 % CI | Diseases | % | 95 % CI | Diseases | % | 95 % CI | Diseases | % | 95 % CI |
| 1 | Background | 0.92 | 0.91;0.92 | Background | 1.81 | 1.77;1.86 | Background | 7.86 | 7.57;8.17 | Background | 19.68 | 18.74;20.52 |
| 2 | Low back pain | 0.52 | 0.36;0.70 | Low back pain | 1.66 | 0.99;2.45 | Arthritis | 1.97 | 1.07;2.98 | Heart attack | 3.48 | 1.74;5.76 |
| 3 | Arthritis | 0.22 | 0.13;0.33 | Arthritis | 1.55 | 0.91;2.27 | Heart attack | 1.91 | 1.10;2.80 | Arthritis | 2.57 | 1.21;4.38 |
| 4 | Depression | 0.21 | 0.11;0.35 | Heart attack | 1.10 | 0.55;1.74 | Low back pain | 1.82 | 1.16;2.57 | Chronic respiratory diseases | 1.60 | 0.68;2.82 |
| 5 | Chronic respiratory diseases | 0.20 | 0.11;0.30 | Chronic respiratory diseases | 0.73 | 0.33;1.24 | Chronic respiratory diseases | 1.26 | 0.58;2.04 | Low back pain | 1.43 | 0.78;2.27 |
| 6 | Neurological diseases | 0.13 | 0.06;0.22 | Depression | 0.47 | 0.22;0.79 | Osteoporosis | 0.77 | 0.32;1.38 | Neurological diseases | 1.15 | 0.30;2.54 |
| 7 | Stomach ulcer | 0.11 | 0.04;0.19 | Stomach ulcer | 0.47 | 0.17;0.84 | Neurological diseases | 0.73 | 0.22;1.50 | Osteoporosis | 1.06 | 0.42;1.93 |
| 8 | Heart attack | 0.07 | 0.03;0.13 | Osteoporosis | 0.41 | 0.19;0.67 | Cancer | 0.60 | 0.10;1.18 | Cancer | 0.74 | 0.10;1.58 |
| 9 | Osteoporosis | 0.05 | 0.02;0.10 | Cancer | 0.24 | 0.04;0.49 | Stomach ulcer | 0.50 | 0.19;0.87 | Stomach ulcer | 0.66 | 0.20;1.29 |
| 10 | Diabetes | 0.02 | 0.00;0.04 | Neurological diseases | 0.18 | 0.07;0.32 | Depression | 0.44 | 0.22;0.72 | Depression | 0.40 | 0.14;0.78 |
| 11 | Cancer | 0.02 | 0.00;0.05 | Stroke | 0.12 | 0.00;0.33 | Stroke | 0.23 | 0.00;0.47 | Stroke | 0.82 | -0.01;2.17 |
| 12 | Chronic cystitis | 0.01 | 0.00;0.03 | Other diseases ^a | 0.18 | -0.05;0.47 | Diabetes | 0.32 | -0.05;0.78 | Other diseases ^a | 0.33 | -0.09;0.89 |
| 13 | Stroke | 0.01 | 0.00;0.03 | Diabetes | 0.17 | -0.03;0.42 | Other diseases ^a | 0.25 | -0.07;0.66 | Diabetes | 0.32 | -0.05;0.88 |
| 14 | Bowel diseases | 0.01 | -0.01;0.07 | Chronic cystitis | 0.07 | -0.01;0.17 | Chronic cystitis | 0.15 | -0.02;0.40 | Chronic cystitis | 0.21 | -0.04;0.61 |
| 15 | Other diseases ^a | 0.07 | -0.02;0.16 | Bowel diseases | 0.03 | -0.05;0.24 | Bowel diseases | 0.04 | -0.07;0.30 | Bowel diseases | 0.06 | -0.10;0.41 |
| - | Total disability prevalence | 2.57 | 2.24;2.94 | Total disability prevalence | 9.16 | 7.37;11.11 | Total disability prevalence | 18.84 | 16.18;21.47 | Total disability prevalence | 34.51 | 29.91;39.84 |
| Rank | Severe Disability | | | | | | | | | | | |
| | 15–54 years | | | 55–64 years | | | 65–79 years | | | ≥80 years | | |
| | Diseases | % | 95 % CI | Diseases | % | 95 % CI | Diseases | % | 95 % CI | Diseases | % | 95 % CI |
| 1 | Background | 0.64 | 0.64;0.64 | Background | 0.92 | 0.91;0.93 | Background | 3.18 | 3.09;3.27 | Background | 17.37 | 16.28;18.47 |
| 2 | Chronic respiratory diseases | 0.11 | 0.05;0.18 | Chronic respiratory diseases | 0.43 | 0.15;0.81 | Chronic respiratory diseases | 0.90 | 0.32;1.59 | Chronic respiratory diseases | 2.06 | 0.70;4.12 |
| 3 | Low back pain | 0.09 | 0.03;0.18 | Heart attack | 0.34 | 0.09;0.66 | Heart attack | 0.88 | 0.25;1.78 | Heart attack | 1.85 | 0.57;3.46 |
| 4 | Depression | 0.06 | 0.00;0.14 | Arthritis | 0.31 | 0.02;0.70 | Arthritis | 0.55 | 0.03;1.30 | Stroke | 1.63 | 0.65;3.01 |
| 5 | Neurological diseases | 0.06 | 0.03;0.11 | Low back pain | 0.29 | 0.07;0.60 | Stroke | 0.49 | 0.23;0.83 | Osteoporosis | 1.23 | 0.10;2.74 |
| 6 | Arthritis | 0.04 | 0.00;0.10 | Diabetes | 0.19 | 0.02;0.45 | Low back pain | 0.43 | 0.14;0.78 | Arthritis | 1.00 | 0.06;2.35 |
| 7 | Chronic cystitis | 0.03 | 0.00;0.08 | Depression | 0.16 | 0.00;0.42 | Chronic cystitis | 0.38 | 0.03;0.82 | Neurological diseases | 0.99 | 0.39;1.91 |
| 8 | Heart attack | 0.02 | 0.00;0.05 | Stroke | 0.15 | 0.05;0.31 | Diabetes | 0.36 | 0.05;0.70 | Chronic cystitis | 0.98 | 0.07;2.28 |
| 9 | Stroke | 0.02 | 0.00;0.04 | Osteoporosis | 0.15 | 0.01;0.31 | Osteoporosis | 0.35 | 0.03;0.82 | Diabetes | 0.57 | 0.06;1.26 |
| 10 | Diabetes | 0.01 | 0.00;0.04 | Neurological diseases | 0.15 | 0.04;0.35 | Neurological diseases | 0.33 | 0.12;0.57 | Low back pain | 0.56 | 0.18;1.11 |
| 11 | Osteoporosis | 0.01 | 0.00;0.03 | Chronic cystitis | 0.11 | 0.01;0.26 | Depression | 0.27 | 0.00;0.87 | Depression | 0.38 | -0.01;1.09 |
| 12 | Cancer | 0.00 | 0.00;0.01 | Cancer | 0.03 | -0.01;0.09 | Cancer | 0.10 | -0.03;0.31 | Bowel diseases | 0.14 | -0.09;0.60 |
| 13 | Bowel diseases | 0.01 | -0.01;0.04 | Bowel diseases | 0.03 | -0.02;0.15 | Other diseases ^a | 0.07 | -0.19;0.48 | Other diseases ^a | 0.14 | -0.34;0.94 |
| 14 | Other diseases ^a | 0.01 | -0.04;0.08 | Other diseases ^a | 0.03 | -0.10;0.22 | Bowel diseases | 0.06 | -0.04;0.22 | Cancer | 0.11 | -0.03;0.36 |

Table 6 Rank of absolute contribution of diseases and background to the prevalence of disability, according to disability severity in men. Health Interview Survey, Belgium, 1997, 2001, 2004, and 2008 (Continued)

| | | | | | | | | | | | | |
|----|-----------------------------|------|------------|-----------------------------|-------|------------|-----------------------------|-------|------------|-----------------------------|-------|-------------|
| 15 | Stomach ulcer | 0.00 | -0.01;0.01 | Stomach ulcer | -0.02 | -0.04;0.02 | Stomach ulcer | -0.03 | -0.09;0.03 | Stomach ulcer | -0.04 | -0.13;0.07 |
| - | Total disability prevalence | 1.12 | 0.94;1.33 | Total disability prevalence | 3.28 | 2.24;4.39 | Total disability prevalence | 8.32 | 6.43;10.34 | Total disability prevalence | 28.97 | 24.96;33.96 |

The disease contribution do not sum to the total disability prevalence due to rounding

Arthritis: osteoarthritis and rheumatoid arthritis; chronic respiratory diseases: asthma, chronic bronchitis, chronic obstructive pulmonary disease, emphysema; neurological diseases: epilepsy and Parkinson's disease

^aOther diseases: kidney diseases, liver diseases, gall-stones, glaucoma, cataract, thyroid problems, skin diseases, and migraine

Women - mild disability

In women with mild disability, arthritis and low back pain were the main contributors to the disability prevalence in all age groups, accounting for 25–46 % of the disability burden (Table 7 and Fig. 4). Depression and chronic respiratory diseases were also important contributors in women aged less than 65 years. Disability attributed to depression varied from 8 % in women aged 15–54 years and 5 % in women aged 55–64 years. For women aged 65 years or older, heart attack and chronic respiratory diseases were among the main contributors to the disability burden. Stomach ulcer, chronic cystitis, and neurological diseases were not important contributors (Table 7 and Fig. 4).

Women - severe disability

Arthritis was the main contributor to the severe disability burden in women, accounting for 8–25 % of the total disability prevalence. For women at young ages (<65 years), neurological diseases, depression, and low back pain were also important contributors. For severely disabled women aged 65–79 years, low back pain and diabetes were among the main contributors, representing 7 and 6 % of the disability burden in this age group. In the oldest old women (≥ 80 years), stroke and neurological diseases had an important contribution to the disability burden, accounting for 6 and 5 %, respectively. Cancer and chronic cystitis had a low contribution to the severe disability prevalence in women (Table 7 and Fig. 4).

Disability prevalence

The mild disability prevalence was higher than severe disability prevalence for men and women in all age groups, except in the oldest old women (≥ 80 years), in which the prevalence of severe disability was 1.2 times higher than the prevalence of mild disability.

The total mild disability prevalence was higher for women compared to men in all age groups. For severe disability, almost no gender difference was observed in individuals aged <65 years, while the prevalence of severe disability in women was 1.6 and 1.7 times higher than men aged 65–79 years and 80 years or older, respectively (Tables 6 and 7).

Discussion

A stable prevalence of mild (5 %) and severe (2–3 %) disability was observed for the Belgian population aged 15 years or older between 1997 and 2008. For women, arthritis was the main contributor to the mild and severe disability burden. For men with mild disability, low back pain, arthritis, and heart attack contributed most to the disability burden in men aged 15–64 years, 65–79 years, and ≥ 80 years, respectively. For severely disabled men, chronic respiratory diseases contributed most to the disability prevalence. The contribution also differed by age: for mild disability, depression and chronic respiratory diseases were important contributors among young individuals, while heart attack had a large contribution for older individuals. For severe disability, neurological diseases and stroke presented a large contribution in young and elderly individuals, respectively.

Disability prevalence

Different disability trends are found across countries and time [26, 27]. Although most studies in developed countries showed a decline in the disability prevalence [26, 28, 29], a stable disability prevalence was found across the four BHIS, similar to the trends in the Netherlands for activity limitations from 1990 to 2008 [30]. Despite the differences in the methodology and disability definition, the estimated prevalence of severe disability in Belgium was slightly higher than the one found in France in 2008–2009, where this prevalence was 1.4 % [12]. The small increase observed for severe disability in Belgium from 1997, 2001, and 2004 to 2008 can be due to the change in the options of answer in the ADL questions in 2008. In the BHIS from 1997 to 2004, only three answers were possible, while in the 2008 BHIS a fourth option – “with a lot of difficulty” – was added and included in our definition of severe disability.

The higher prevalence of mild compared to severe disability in all age groups indicates that difficulty is more common than dependence, except for women aged 80 years or older, in which more than half of the women reported dependence. Dependence is more common among women and increases with age [13, 31]. This gender difference can be a result of greater longevity and comorbidity in women compared to men [13, 31]. Another possible explanation for the gender difference is a composition effect. Among the oldest old individuals (≥ 80 years) in our study, 15 % of the men and 23 % of the women were aged 90 years or older. Since at the

Table 7 Rank of absolute contribution of diseases and background to the prevalence of disability, according to disability severity in women. Health Interview Survey, Belgium, 1997, 2001, 2004, and 2008

| Rank | <i>Mild disability</i> | | | | | | | | | | | |
|------|------------------------------|-------|------------|------------------------------|-------|------------|------------------------------|-------|-------------|------------------------------|-------|-------------|
| | 15–54 years | | | 55–64 years | | | 65–79 years | | | ≥80 years | | |
| | Diseases | % | 95 % CI | Diseases | % | 95 % CI | Diseases | % | 95 % CI | Diseases | % | 95 % CI |
| 1 | Background | 1.08 | 1.08;1.08 | Arthritis | 3.67 | 2.59;4.88 | Background | 10.55 | 10.23;10.85 | Background | 24.72 | 23.86;25.65 |
| 2 | Arthritis | 0.63 | 0.42;0.91 | Background | 2.83 | 2.79;2.86 | Arthritis | 6.44 | 4.69;8.36 | Arthritis | 7.68 | 4.82;10.54 |
| 3 | Low back pain | 0.59 | 0.40;0.81 | Low back pain | 1.73 | 1.01;2.63 | Low back pain | 2.38 | 1.47;3.35 | Low back pain | 2.37 | 1.26;3.64 |
| 4 | Chronic respiratory diseases | 0.30 | 0.16;0.45 | Depression | 0.61 | 0.25;1.05 | Chronic respiratory diseases | 0.94 | 0.45;1.51 | Heart attack | 1.26 | 0.40;2.39 |
| 5 | Depression | 0.27 | 0.12;0.43 | Chronic respiratory diseases | 0.57 | 0.29;0.89 | Heart attack | 0.94 | 0.36;1.56 | Chronic respiratory diseases | 0.89 | 0.43;1.57 |
| 6 | Bowel diseases | 0.19 | 0.07;0.34 | Bowel diseases | 0.45 | 0.17;0.77 | Diabetes | 0.80 | 0.24;1.40 | Diabetes | 0.74 | 0.21;1.47 |
| 7 | Diabetes | 0.07 | 0.02;0.13 | Diabetes | 0.44 | 0.13;0.82 | Bowel diseases | 0.73 | 0.24;1.43 | Stroke | 0.68 | 0.20;1.32 |
| 8 | Heart attack | 0.05 | 0.02;0.09 | Heart attack | 0.32 | 0.11;0.57 | Depression | 0.66 | 0.26;1.21 | Bowel diseases | 0.56 | 0.19;1.05 |
| 9 | Cancer | 0.03 | 0.00;0.07 | Stroke | 0.24 | 0.07;0.49 | Stroke | 0.43 | 0.12;0.92 | Depression | 0.47 | 0.17;0.90 |
| 10 | Stroke | 0.03 | 0.01;0.08 | Cancer | 0.17 | 0.02;0.40 | Cancer | 0.30 | 0.04;0.64 | Cancer | 0.20 | 0.02;0.49 |
| 11 | Other diseases ^a | 0.18 | -0.01;0.40 | Other diseases ^a | 0.33 | -0.03;0.78 | Osteoporosis | 0.33 | -0.32;1.11 | Osteoporosis | 0.38 | -0.34;1.35 |
| 12 | Stomach ulcer | 0.02 | -0.03;0.11 | Osteoporosis | 0.16 | -0.15;0.51 | Other diseases ^a | 0.47 | -0.05;1.09 | Other diseases ^a | 0.56 | -0.04;1.35 |
| 13 | Neurological diseases | 0.02 | -0.01;0.07 | Neurological diseases | 0.08 | -0.03;0.27 | Stomach ulcer | 0.09 | -0.12;0.46 | Neurological diseases | 0.13 | -0.04;0.41 |
| 14 | Osteoporosis | 0.01 | -0.01;0.05 | Stomach ulcer | 0.07 | -0.09;0.35 | Neurological diseases | 0.07 | -0.02;0.22 | Stomach ulcer | 0.08 | -0.12;0.43 |
| 15 | Chronic cystitis | -0.01 | -0.03;0.05 | Chronic cystitis | -0.01 | -0.06;0.10 | Chronic cystitis | -0.02 | -0.09;0.18 | Chronic cystitis | -0.02 | -0.14;0.26 |
| - | Total disability prevalence | 3.47 | 3.04;3.90 | Total disability prevalence | 11.66 | 9.68;13.72 | Total disability prevalence | 25.10 | 22.32;27.93 | Total disability prevalence | 40.71 | 36.32;44.77 |
| Rank | <i>Severe Disability</i> | | | | | | | | | | | |
| | 15–54 years | | | 55–64 years | | | 65–79 years | | | ≥80 years | | |
| | Diseases | % | 95 % CI | Diseases | % | 95 % CI | Diseases | % | 95 % CI | Diseases | % | 95 % CI |
| 1 | Background | 0.72 | 0.72;0.72 | Background | 1.13 | 1.08;1.18 | Arthritis | 3.25 | 1.84;4.68 | Background | 26.38 | 24.43;28.38 |
| 2 | Arthritis | 0.10 | 0.04;0.19 | Arthritis | 0.76 | 0.35;1.28 | Background | 2.74 | 2.60;2.89 | Arthritis | 7.08 | 3.54;11.35 |
| 3 | Neurological diseases | 0.08 | 0.02;0.21 | Low back pain | 0.25 | 0.03;0.55 | Low back pain | 0.87 | 0.11;1.73 | Stroke | 3.04 | 1.64;5.04 |
| 4 | Depression | 0.07 | 0.01;0.13 | Neurological diseases | 0.25 | 0.09;0.47 | Diabetes | 0.84 | 0.36;1.40 | Neurological diseases | 2.54 | 1.34;4.18 |
| 5 | Low back pain | 0.07 | 0.01;0.15 | Depression | 0.19 | 0.02;0.40 | Osteoporosis | 0.80 | 0.12;1.56 | Osteoporosis | 1.61 | 0.24;3.29 |
| 6 | Chronic respiratory diseases | 0.05 | 0.01;0.11 | Diabetes | 0.18 | 0.07;0.33 | Neurological diseases | 0.71 | 0.35;1.14 | Heart attack | 1.45 | 0.00;3.38 |
| 7 | Chronic cystitis | 0.03 | 0.00;0.07 | Osteoporosis | 0.17 | 0.02;0.39 | Stroke | 0.66 | 0.32;1.05 | Low back pain | 1.41 | 0.18;2.80 |
| 8 | Stomach ulcer | 0.03 | 0.00;0.06 | Stroke | 0.15 | 0.05;0.31 | Depression | 0.54 | 0.05;1.06 | Diabetes | 1.37 | 0.50;2.39 |
| 9 | Bowel diseases | 0.03 | 0.00;0.08 | Chronic respiratory diseases | 0.13 | 0.01;0.29 | Chronic respiratory diseases | 0.48 | 0.05;1.03 | Depression | 0.93 | 0.08;2.00 |
| 10 | Diabetes | 0.02 | 0.01;0.04 | Stomach ulcer | 0.13 | 0.00;0.29 | Heart attack | 0.48 | 0.00;1.01 | Stomach ulcer | 0.92 | 0.00;2.37 |
| 11 | Cancer | 0.01 | 0.00;0.03 | Bowel diseases | 0.13 | 0.00;0.30 | Bowel diseases | 0.46 | 0.02;1.07 | Chronic respiratory diseases | 0.89 | 0.11;1.90 |
| 12 | Heart attack | 0.01 | 0.00;0.02 | Chronic cystitis | 0.09 | 0.01;0.20 | Cancer | 0.44 | 0.02;1.00 | Chronic cystitis | 0.77 | 0.08;1.64 |

Table 7 Rank of absolute contribution of diseases and background to the prevalence of disability, according to disability severity in women. Health Interview Survey, Belgium, 1997, 2001, 2004, and 2008 (Continued)

| | | | | | | | | | | | | |
|----|-----------------------------|------|------------|-----------------------------|------|------------|-----------------------------|-------|-------------|-----------------------------|-------|-------------|
| 13 | Stroke | 0.01 | 0.00;0.03 | Cancer | 0.08 | 0.00;0.21 | Stomach ulcer | 0.35 | 0.00;0.76 | Cancer | 0.72 | 0.02;2.16 |
| 14 | Osteoporosis | 0.01 | 0.00;0.03 | Heart attack | 0.07 | 0.00;0.17 | Chronic cystitis | 0.26 | 0.03;0.57 | Bowel diseases | 0.61 | 0.03;1.37 |
| 15 | Other diseases ^a | 0.04 | -0.03;0.13 | Other diseases ^a | 0.11 | -0.06;0.32 | Other diseases ^a | 0.36 | -0.26;1.00 | Other diseases ^a | 0.81 | -0.54;2.34 |
| - | Total disability prevalence | 1.29 | 1.03;1.60 | Total disability prevalence | 3.80 | 2.67;5.03 | Total disability prevalence | 13.26 | 11.29;15.41 | Total disability prevalence | 50.51 | 45.45;56.07 |

The disease contribution do not sum to the total disability prevalence due to rounding

Arthritis: osteoarthritis and rheumatoid arthritis; chronic respiratory diseases: asthma, chronic bronchitis, chronic obstructive pulmonary disease, emphysema; neurological diseases: epilepsy and Parkinson's disease

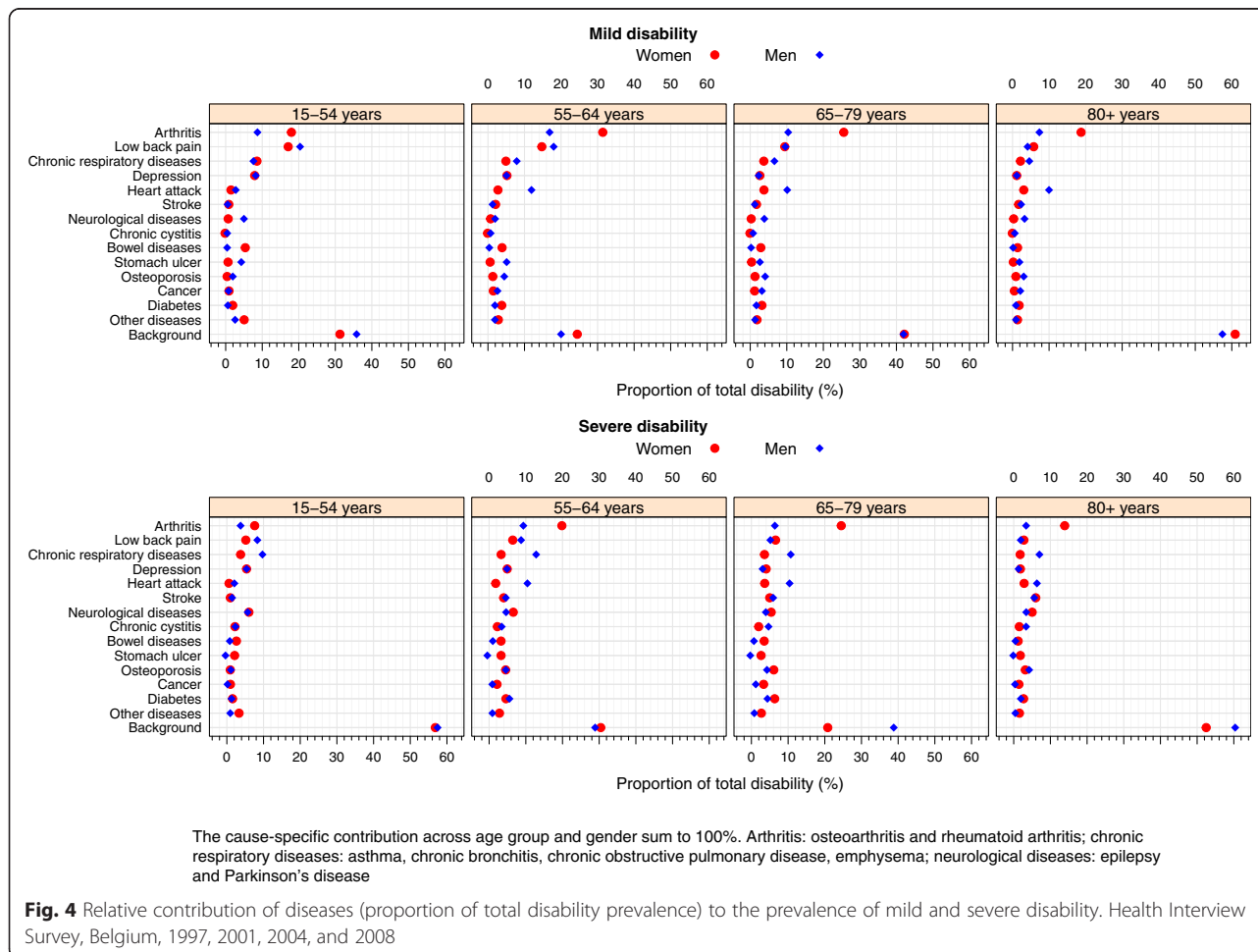
^aOther diseases: kidney diseases, liver diseases, gall-stones, glaucoma, cataract, thyroid problems, skin diseases, and migraine

oldest ages women seem to spend more time severely disabled than men before death [32], the higher proportion of women aged 90 years or older compared to men in this study can also result in higher severe disability prevalence in women compared to men among the oldest old individuals.

Although young individuals are usually perceived as healthy [33], the mild and severe disability prevalence in this age group indicates that attention should also be given

to the young individuals, to reduce future development and progression of disability.

It is interesting to notice that the most common ADLs in both mild and severe disabled individuals were lower extremity functions, such as limitations in mobility, transfer in and out bed and chair, although dressing and undressing difficulties are related to both lower and upper extremity functions [6]. This finding is line with the high contribution of arthritis observed in men and women across all age



groups, as these lower extremity limitations involves the knee, a common site of arthritis [34, 35].

Contribution of chronic diseases to the disability burden

The contribution of chronic diseases to the disability burden differs by gender, age, and disability severity level. Although reporting any difficulty in performing an ADL is considered a severe limitation, as ADLs are defined as basic tasks of daily life required for survival [26], longitudinal studies have shown that information on difficulty and dependence in performing ADLs are complementary. Thus, if both difficulty and dependence are assessed, they can better represent the continuum of disability than if severity level is ignored [36, 37]. Also, it has been demonstrated that a large proportion of the elderly individuals who report ADL is not homogenous, reinforcing the importance of assessing both, difficulty and dependence, to better understand this heterogeneity [37].

The contribution of diseases to the disability burden depends on the disease prevalence and the disease-specific disability rates [1, 10, 11]. For most of the main contributors, the attribution of disability was a function of high to moderate disease prevalence and low to moderate disabling impact. For example, among severely disabled women in all age groups, arthritis was by far the main contributor to the disability burden. The high prevalence of arthritis, reaching 70 % for women aged 65–79 years, combined with its low to moderate disabling impact (0.01–0.18) in severely disabled women, resulted in the identification of arthritis as the main contributor to the disability burden in all age groups. However, the most disabling diseases are not necessarily the most prevalent diseases [1]. For instance, stroke ranked second among the contributors to the severe disability burden in the oldest old women. For this group, stroke had a low prevalence (<10 %) compared to other diseases, but a very high disabling impact (1.23), resulting in an important contribution.

Low back pain and arthritis are known to be important causes of disability, especially among the elderly [8–14]. In our study these two musculoskeletal diseases were important contributors of mild disability in men and women and also among severely disabled women. Similar results were found in previous studies [8, 10–13, 15], although no distinction between mild and severe disability was reported in most of them, except for the study conducted in France. In the French study [12], instead of musculoskeletal diseases, psychiatric and neurological diseases had the largest contribution. A possible explanation for these differences is the difference in the disability definition, as the French study defined severe disability based exclusively on dependence on ADL, while in our study, the option “a lot of difficulty” was also incorporated to severe disability definition; in the definition of the disease groups, since dementia, headache, and multiple sclerosis were included in the neurological diseases

group in the study conducted in France; and in the methodology, as the French study assessed the disability burden based on the average attribution fraction [38] to estimate the impact of diseases on disability, without stratifying the results per gender, hampering comparability.

In addition to musculoskeletal diseases, chronic respiratory diseases had an important contribution to the mild disability burden among young individuals. Chronic respiratory diseases have a direct effect on the development of disability in middle-aged individuals, with a great impact in the performance of lower extremity functions [39].

An interesting result is the association of depression with both mild and severe disability in young individuals, indicating its relation with difficulty and dependence. Depression is one of most disabling diseases, being the main cause of years of life lost due to disability in young individuals worldwide [12, 33, 40].

In general, the results for mild disability were very similar to our previous findings, using the same data (BHIS 1997, 2001, 2004, 2008) [16], but without distinguishing between disability severity level. Possibly, our previous results were driven by mild disability, since the number of individuals with mild disability was 1.5 times higher than that of severe disability.

Another important finding of this study was the identification of chronic respiratory diseases as the main contributor to the severe disability burden among men in all age groups. Although chronic respiratory diseases have been previously related to difficulty in mobility and in the performance of ADLs [10, 39, 41, 42] our findings suggest that chronic respiratory diseases are also an important cause of dependence in men. The relation of chronic respiratory diseases with dependence in ADLs was previously reported, and an increase with age and disease severity was observed [43].

Despite the different methodology used to assess the disability burden, a higher disabling impact for stroke compared to other diseases and an association of stroke with severe disability was also found in other studies [12, 44–48]. In our study it was an important contributor to severe disability in the oldest old individuals (≥ 80 years), suggesting a possible relation of stroke with dependence in this group.

Neurological diseases also had a high disabling impact for individuals with severe disability and for mildly disabled men. Additionally, neurological diseases were important contributors to the severe disability burden in the youngest (15–54 years) men and women and oldest (≥ 80 years) women, suggesting a relation with dependence in these groups. In our study, only Parkinson's disease and epilepsy were included in the neurological diseases group. Parkinson's disease [49, 50] and epilepsy [51] have been related to severe disability [12] and loss of autonomy. Parkinson's disease is more common at

older ages and, in this study, epilepsy seems to be responsible for most of the severe disability burden attributed to neurological diseases in young individuals.

Cancer was not an important contributor to the mild and severe disability burden. This is in agreement with previous studies [10, 12, 48]. One possible explanation for the low contribution of cancer is the high case-fatality rate observed in cancer patients combined with long periods of cancer prevalence without a substantial impact on ADLs [48].

The high background contribution observed in the youngest (15–54 years) and oldest (≥ 80 years) severely disabled individuals might indicate that important causes of severe disability in these groups were not included in our analysis, although 21 diseases were initially considered in the models. Possible causes related to dependence in these groups are injuries, especially from road traffic accidents [33, 52], among the youngest, and mental disorders such as dementia [48, 53] among the elderly.

Although not assessed in this study, our attribution results might be related with risk factors such as smoking, obesity, and harmful alcohol use, as the diseases that contributed most to the disability burden – musculoskeletal, respiratory, and cardiovascular diseases – are also associated with these modifiable risk factors [7, 54–56]. Additionally, the increasing trend in the prevalence of these risk factors observed worldwide, especially at young ages may contribute to the disability burden [57]. While smoking is related with high mortality [58], obesity was identified as the most important risk factor associated with years lived with disability compared to smoking and harmful alcohol use in a study conducted in the Netherlands [59].

Limitations and strengths

Some limitations should be carefully considered when interpreting the study results. Since we used cross-sectional data, we rely on the assumption that diseases cause disability. However, this is not necessarily true, although it is plausible [1] according to the disablement model proposed by Verbrugge and Jette [60]. Consequently, diseases may be incorrectly attributed to disability in cases where disability onset preceded disease onset. Also, the use of self-reported data may have resulted in an underestimation of the contribution of diseases, as the validity of self-reported diseases differs according to the diseases being studied [61]. Furthermore, the background contribution to both mild and severe disability might be overestimated due to lack of information of important disability causes, such as injuries and mental disorders [10].

Selection bias may also have occurred due to the low response rates in the four BHIS and due to the exclusion of individuals without disability or disease information (Fig. 1). We reported previously that individuals with missing information on disability and diseases were more

likely to be women, elderly, and with low education level [16]. Therefore, our results might underestimate the true disability prevalence.

Another limitation is our definition of disability, which was based on functional and mobility limitations. Other measures of disability, including instrumental activities of daily living (IADL), cognitive impairments, and sensory limitations, such as hearing and vision limitations, also play an important role in the disablement process [62]. However, this information was not considered in our definition because these questions were not systematically included in all the four BHIS.

In general, proxy respondents tend to overestimate the disability prevalence and severity when compared to self-responders [6, 63, 64]. In our study, 8.8 % ($n = 3167$) of the interviews were answered by proxies, representing 10.4 % ($n = 917$) of the interviews with elderly individuals (≥ 65 years) (Table 1). Thus, an overestimation of the contribution of diseases to the disability burden might have occurred. However, the use of a mix of self-reporting and proxies is recommended in large surveys, especially those including elderly individuals [1, 64]. Our results support the use of proxies to investigate severe disability, as 29 % of the severely disabled individuals had a proxy interview (Table 1).

Although the attribution method allows the attribution of disability to more than one disease by including interaction terms between diseases in the model [9], we did not include interactions between diseases in our analysis, as it would result in a computer intensive task due to the large sample size ($N = 35,799$) and large number of diseases studied ($N = 21$ diseases). In the mortality analysis, a longitudinal extension of the average attribution fraction method has been proposed to take into account the coexistence of diseases in individuals [65, 66]. Both under and overestimation of the contribution of the diseases to the disability may have occurred in our study as a result of ignoring the interaction between diseases, similar to what is observed in the mortality analysis [65, 66].

Furthermore, the changes in the questions of some chronic diseases over the four BHIS impacted the prevalence of these diseases, resulting in a reduction in the prevalence of heart attack and increase in the prevalence of low back pain in 2008 compared with the previous surveys (Additional file 1). In addition to the stable mild and severe disability prevalence over time in the four BHIS (Fig. 2) and across age groups (Additional file 2), the difference in the disease prevalence of some diseases over time supports pooling the data of the four BHIS.

The use of a large sample is one of the strengths of the study, as it allowed the assessment of the contribution of chronic diseases to the disability burden across different disability severity levels. The inclusion of young individuals in this analysis is an added value of the study, as disability

in young individuals is usually not investigated. Also, the representativeness of the sample used in this analysis was improved by including elderly individuals living in institutions. In our study, 6.6 % ($n = 583$) of the elderly (≥ 65 years) lived in institutions. Furthermore, the inclusion of depression in the analysis highlights the importance of assessing it in surveys, as it was identified as an important contributor to the mild and severe disability burden among young individuals. Another added value of this study is the attribution of disability to chronic diseases for different disability severity levels – moderate and severe.

Conclusions

Different from several developed countries, the disability prevalence in Belgium based on functional and mobility limitations was stable from 1997 to 2008. The high contribution of musculoskeletal diseases to the mild and severe disability prevalence shows that intervention strategies to tackle these diseases can be attractive to reduce the disability burden, as they will have an impact on both difficulty and dependence.

Furthermore, focus should be given to chronic respiratory diseases, stroke, and neurological diseases, as they were among the most disabling diseases and contributors to the severe disability burden, indicating a relation of these diseases with dependence. Attention should also be given to depression, an important contributor to mild and severe disability among young individuals.

Our results indicate that the attribution of disability to chronic diseases is more informative if different levels of disability are taken into consideration. Measures of difficulty in ADL and mobility are generally used to evaluate health care treatment effectiveness. In contrast, dependence measures are used to identify demands for particular types of long-term care needs [1, 67]. In our study the hospitalization rate increased with disability severity level (Table 1), confirming previous findings [36]. Besides hospitalization, home care visits, nursing homes admission, and death also increase with disability severity level [36]. Therefore, the identification of which diseases are related to the different levels of disability severity can assist policymakers in the definition of strategies to tackle disability, involving prevention, rehabilitation programs (especially for dependence), support services, and training for disabled individuals [7].

Additional files

Additional file 1: Disease prevalence according to gender and survey year. Belgian Health Interview Survey, 1997, 2001, 2004, and 2008.

Additional file 2: Prevalence of mild and severe disability across age groups and survey years. Health Interview Survey, Belgium, 1997, 2001, 2004, and 2008.

Abbreviations

ADL: Activity of daily living; BHIS: Belgian Health Interview Survey; IADL: Instrumental activities of daily living; RRR: Reduced rank regression; WHO: World Health Organization.

Competing interests

The authors declare that they have no competing interests.

Authors' contributions

RTCY performed the statistical analysis and drafted the article. HVO initiated and supervised the study and critically reviewed the manuscript. SD, JVH, JT, WJN and PD critically reviewed the manuscript and contributed to the definition of disability and chronic diseases used in the analysis. All authors read and approved the final manuscript.

Acknowledgements

The different BHIS are conducted on request of all Ministers responsible for Public Health at the federal, regional and communal level united in the Commission of Commissioners of the BHIS. The current research is financed by the Scientific Institute of Public Health.

Author details

¹Department of Public Health and Surveillance, Scientific Institute of Public Health, Rue Juliette Wytsmanstraat 14, Brussels 1050, Belgium. ²Department of Social Research, Interface Demography, Vrije Universiteit Brussel, Brussels 1050, Belgium. ³Department of Public Health, Ghent University, Ghent, Belgium. ⁴Department of Public Health, Erasmus MC, Rotterdam, The Netherlands.

Received: 1 April 2015 Accepted: 11 June 2015

Published online: 03 August 2015

References

1. Verbrugge LM, Lepkowski JM, Imanaka Y. Comorbidity and its impact on disability. *Milbank Q.* 1989;67:450–84.
2. Espelt A, Font-Ribera L, Rodriguez-Sanz M, Artazcoz L, Ferrando J, Plaza A, et al. Disability among older people in a southern European city in 2006: trends in gender and socioeconomic inequalities. *J Womens Health (Larchmt).* 2010;19:927–33.
3. Melzer D, Parahyba ML. Socio-demographic correlates of mobility disability in older Brazilians: results of the first national survey. *Age Ageing.* 2004;33:253–9.
4. Fried LP, Bandeen-Roche K, Kasper JD, Guralnik JM. Association of comorbidity with disability in older women: the Women's Health and Aging Study. *J Clin Epidemiol.* 1999;52:27–37.
5. Kim DH, Newman AB, Lipsitz LA. Prediction of severe, persistent activity-of-daily-living disability in older adults. *Am J Epidemiol.* 2013;178:1085–93.
6. Jagger C, Arthur AJ, Spiers NA, Clarke M. Patterns of onset of disability in activities of daily living with age. *J Am Geriatr Soc.* 2001;49:404–9.
7. World Health Organization. *World Report on Disability.* Geneva: World Health Organization; 2011.
8. Nusselder WJ, Looman CW, Mackenbach JP, Huisman M, Van Oyen H, Deboosere P, et al. The contribution of specific diseases to educational disparities in disability-free life expectancy. *Am J Public Health.* 2005;95:2035–41.
9. European Health Expectancy Monitoring Unit (EHEMU). WP7: Decomposition tools - Technical report on attribution tool. 2010.
10. Klijs B, Nusselder WJ, Looman CW, Mackenbach JP. Contribution of chronic disease to the burden of disability. *PLoS One.* 2011;6:e25325.
11. Nusselder WJ, Looman CWN. Decomposition of differences in health expectancy by cause. *Demography.* 2004;41:315–34.
12. Palazzo C, Ravaud JF, Trinquart L, Dalichamp M, Ravaud P, Poiraud S. Respective contribution of chronic conditions to disability in France: results from the national Disability-Health Survey. *PLoS One.* 2012;7:e44994.
13. Strobl R, Muller M, Emeny R, Peters A, Grill E. Distribution and determinants of functioning and disability in aged adults—results from the German KORA-Age study. *BMC Public Health.* 2013;13:137.
14. Chen H, Wang H, Crimmins EM, Chen G, Huang C, Zheng X. The contributions of diseases to disability burden among the elderly population in China. *J Aging Health.* 2014;26:261–82.

15. Klijs B, Nusselder WJ, Looman CW, Mackenbach JP. Educational disparities in the burden of disability: contributions of disease prevalence and disabling impact. *Am J Public Health*. 2014;104:e141–8.
16. Yokota RTC, Berger N, Nusselder WJ, Robine JM, Tafforeau J, Deboosere P, et al. Contribution of chronic diseases to the disability burden in a population 15 years and older, Belgium, 1997–2008. *BMC Public Health*. 2015;15:229.
17. Liu F, Woodrow J, Loucks-Atkinson A, Buehler S, West R, Wang PP. Smoking and alcohol consumption patterns among elderly Canadians with mobility disabilities. *BMC Res Notes*. 2013;6:218.
18. Demarest S, Van der Heyden J, Charafeddine R, Driessens S, Gisle L, Tafforeau J. Methodological basics and evolution of the Belgian Health Interview Survey 1997–2008. *Arch Public Health*. 2013;71:24.
19. Scientific Institute of Public Health (WIV-ISP). Health Interview Survey 2008 - Study Protocol. Brussels: Scientific Institute of Public Health (WIV-ISP); 2009.
20. Demarest S, Van der Heyden J, Charafeddine R, Tafforeau J, Van Oyen H, Van Hal G. Socio-economic differences in participation of households in a Belgian national health survey. *Eur J Public Health*. 2013;23:981–5.
21. de Bruin A, Picavet HS, Nossikov A. Health Interview Surveys: towards international harmonization of methods and instruments. World Health Organisation: Copenhagen; 1996.
22. Breslow NE, Day NE. Rates and rate standardization. In: Statistical methods in cancer research. Vol II. The design and analysis of cohort studies. 82nd ed. Lyon: IARC, World Health Organization; 1987. p. 48–79.
23. Yee TW, Hastie TJ. Reduced-rank vector generalized linear models. *Stat Model*. 2003;3:15–41.
24. Efron B, Gong G. A leisurely look at the bootstrap, the jackknife, and cross-validation. *Am Stat*. 1983;37:36–48.
25. R Core Team. R: A language and environment for statistical computing. [3.0.3]. Vienna, Austria: R Foundation for Statistical Computing; 2014.
26. Christensen K, Doblhammer G, Rau R, Vaupel JW. Ageing populations: the challenges ahead. *Lancet*. 2009;374:1196–208.
27. Robine JM, Michel JP. Looking forward to a general theory on population aging. *J Gerontol A Biol Sci Med Sci*. 2004;59:M590–7.
28. Lafortune G, Balestat G. Disability Study Expert Group Members. Trends in severe disability among elderly people: assessing the evidence in 12 OECD countries and the future implications. Paris: OECD; 2007. p. 1–79. OECD Health working paper N° 26.
29. Manton KG. Recent declines in chronic disability in the elderly U.S. population: risk factors and future dynamics. *Annu Rev Public Health*. 2008;29:91–113.
30. Hoeymans N, Wong A, van Gool CH, Deeg DJ, Nusselder WJ, de Klerk MM, et al. The disabling effect of diseases: a study on trends in diseases, activity limitations, and their interrelationships. *Am J Public Health*. 2012;102:163–70.
31. Gill TM, Gahbauer EA, Lin H, Han L, Allore HG. Comparisons between older men and women in the trajectory and burden of disability over the course of nearly 14 years. *J Am Med Dir Assoc*. 2013;14:280–6.
32. Romoren TI, Blekeseaune M. Trajectories of disability among the oldest old. *J Aging Health*. 2003;15:548–66.
33. Gore FM, Bloem PJ, Patton GC, Ferguson J, Joseph V, Coffey C, et al. Global burden of disease in young people aged 10–24 years: a systematic analysis. *Lancet*. 2011;377:2093–102.
34. Verbrugge LM, Lepkowski JM, Konkol LL. Levels of disability among U.S. adults with arthritis. *J Gerontol*. 1991;46:571–83.
35. Woolf AD, Pfleger B. Burden of major musculoskeletal conditions. *Bull World Health Organ*. 2003;81:646–56.
36. Gill TM. Assessment of function and disability in longitudinal studies. *J Am Geriatr Soc*. 2010;58 Suppl 2:S308–12.
37. Iwarsson S, Horstmann V, Sonn U. Assessment of dependence in daily activities combined with a self-rating of difficulty. *J Rehabil Med*. 2009;41:150–6.
38. Eide GE, Gefeller O. Sequential and average attributable fractions as aids in the selection of preventive strategies. *J Clin Epidemiol*. 1995;48:645–55.
39. Eisner MD, Iribarren C, Blanc PD, Yelin EH, Ackerson L, Byl N, et al. Development of disability in chronic obstructive pulmonary disease: beyond lung function. *Thorax*. 2011;66:108–14.
40. Peres K, Jagger C, Matthews FE. Impact of late-life self-reported emotional problems on Disability-Free Life Expectancy: results from the MRC Cognitive Function and Ageing Study. *Int J Geriatr Psychiatry*. 2008;23:643–9.
41. Verbrugge LM, Patrick DL. Seven chronic conditions: Their impact on US adults' activity levels and use of medical services. *Am J Public Health*. 1995;85:173–82.
42. Barusso MS, Gianjeppe-Santos J, Basso-Vanelli RP, Regueiro EM, Panin JC, Di Lorenzo VA. Limitation of activities of daily living and quality of life based on copd combined classification. *Respir Care*. 2014;60(3):388–98.
43. Mannino DM, Ford ES, Redd SC. Obstructive and restrictive lung disease and functional limitation: data from the Third National Health and Nutrition Examination. *J Intern Med*. 2003;254:540–7.
44. Adamson J, Beswick A, Ebrahim S. Is stroke the most common cause of disability? *J Stroke Cerebrovasc Dis*. 2004;13:171–7.
45. Patel MD, Tilling K, Lawrence E, Rudd AG, Wolfe CD, McKeivitt C. Relationships between long-term stroke disability, handicap and health-related quality of life. *Age Ageing*. 2006;35:273–9.
46. Kelly-Hayes M, Beiser A, Kase CS, Scaramucci A, D'Agostino RB, Wolf PA. The influence of gender and age on disability following ischemic stroke: the Framingham study. *J Stroke Cerebrovasc Dis*. 2003;12:119–26.
47. Mendis S. Stroke disability and rehabilitation of stroke: World Health Organization perspective. *Int J Stroke*. 2013;8:3–4.
48. Aguero-Torres H, Fratiglioni L, Guo ZC, Vitanen M, von Strauss E, Winblad B. Dementia is the major cause of functional dependence in the elderly: 3-year follow-up data from a population-based study. *Am J Public Health*. 1998;88:1452–6.
49. Shulman LM. Understanding disability in Parkinson's disease. *Mov Disord*. 2010;25 Suppl 1:S131–5.
50. World Health Organization. Neurological disorders: a public health approach. In: Neurological disorders: public health challenges. 1st ed. Geneva: World Health Organization; 2006. p. 140–50.
51. Mollaoglu M, Fertelli TK, Tuncay FO. Disability in elderly patients with chronic neurological illness: stroke, multiple sclerosis and epilepsy. *Arch Gerontol Geriatr*. 2011;53:e227–31.
52. Barker M, Power C, Roberts I. Injuries and the risk of disability in teenagers and young adults. *Arch Dis Child*. 1996;75:156–8.
53. Yoshida D, Ninomiya T, Doi Y, Hata J, Fukuhara M, Ikeda F, et al. Prevalence and causes of functional disability in an elderly general population of Japanese: the Hisayama study. *J Epidemiol*. 2012;22:222–9.
54. Lincoln AE, Smith GS, Amoroso PJ, Bell NS. The effect of cigarette smoking on musculoskeletal-related disability. *Am J Ind Med*. 2003;43:337–49.
55. Chen H, Guo X. Obesity and functional disability in elderly Americans. *J Am Geriatr Soc*. 2008;56:689–94.
56. Oslin DW. Alcohol use in late life: disability and comorbidity. *J Geriatr Psychiatry Neurol*. 2000;13:134–40.
57. World Health Organization. Global status report on non communicable diseases 2010. Geneva: World Health Organization; 2011.
58. Van Oyen H, Berger N, Nusselder W, Charafeddine R, Jagger C, Cambois E, et al. The effect of smoking on the duration of life with and without disability, Belgium 1997–2011. *BMC Public Health*. 2014;14:723.
59. Klijs B, Mackenbach JP, Kunst AE. Obesity, smoking, alcohol consumption and years lived with disability: A Sullivan life table approach. *BMC Public Health*. 2011;11:378.
60. Verbrugge LM, Jette AM. The disablement process. *Soc Sci Med*. 1994;38:1–14.
61. Van der Heyden J, De Backer D, Tafforeau J, Van Herck K. Reliability and validity of a global question on self-reported chronic morbidity. *J Public Health (Springer)*. 2014;22:371–80.
62. Laditka SB, Jenkins CL. Difficulty or dependency? Effects of measurement scales on disability prevalence among older Americans. *J Health Soc Policy*. 2001;13:1–15.
63. Deeg DJ, Verbrugge LM, Jagger C. Disability measurement. In: Robine JM, Jagger C, Mathers CD, Crimmins EM, editors. Determining health expectancies. John Wiley & Sons Ltd, The Atrium, Southern Gate, Chichester, West Sussex, England: Wiley Online Library; 2003:203–219.
64. Kovar MG, Lawton MP. Functional disability: activities and instrumental activities of daily living. In: Lawton MP, Teresi JA, editors. Annual Review of Gerontology and Geriatrics. New York: Springer Publishing Company; 1994. p. 57–5.
65. Lin H, Allore HG, McAvay G, Tinetti ME, Gill TM, Gross CP, et al. A method for partitioning the attributable fraction of multiple time-dependent coexisting risk factors for an adverse health outcome. *Am J Public Health*. 2013;103:177–82.
66. Tinetti ME, McAvay GJ, Murphy TE, Gross CP, Lin H, Allore HG. Contribution of individual diseases to death in older adults with multiple diseases. *J Am Geriatr Soc*. 2012;60:1448–56.
67. Jette AM. How measurement techniques influence estimates of disability in older populations. *Soc Sci Med*. 1994;38:937–42.