

Downregulation of Rab25 activates Akt1 in head and neck squamous cell carcinoma

DIDEM SEVEN¹, SOYDAN DOGAN¹, ERKAN KILIÇ²,
EMIN KARAMAN², HIKMET KOSEOĞLU¹ and NUR BUYRU¹

Departments of ¹Medical Biology; ²Otorhinolaryngology, Istanbul University,
Cerrahpasa Medical Faculty, Istanbul 34098, Turkey

Received September 30, 2014; Accepted June 11, 2015

DOI: 10.3892/ol.2015.3433

Abstract. Several studies have suggested that Ras-associated binding 25 protein (Rab25) is involved in the pathogenesis of human cancer. Although it has been demonstrated that the development of head and neck squamous cell carcinoma (HNSCC) is the result of an accumulation of multiple sequential genetic and epigenetic alterations in key genes with important functions in cell growth and the cell cycle, recent studies have indicated that HNSCC is a complex and heterogeneous disease. To the best of our knowledge, there is no data regarding the regulation of the Rab25 gene at the mRNA or protein level in HNSCC. Furthermore, available data on Rab25 expression in other types of cancer are conflicting. The aim of the present study was to investigate whether Rab25 is involved in the development and/or progression of HNSCC, and to analyze the mechanisms underlying its effects in this type of cancer. The expression of Rab25 mRNA in HNSCC tissues and adjacent non-tumor tissue samples was measured using reverse transcription-quantitative polymerase chain reaction, while the level of the Rab25, Akt1 and phosphorylated-Akt1 proteins was measured using western blotting. Expression of Rab25 mRNA and protein was downregulated in 69.1% and 56.1% of tumor tissue samples, respectively. This downregulation was associated with an increase in p-Akt1 expression, in the absence of a change in total Akt1 protein levels, in tumor tissues compared with normal tissues. The current findings suggest that Rab25 acts as a tumor suppressor in HNSCC.

Introduction

Head and neck cancer (HNC) is the 6th most common type of cancer worldwide (1), and comprises cancers of the aerodigestive tract, including the lips, oral cavity, nasal cavity, paranasal sinuses, pharynx, larynx, oropharynx, hypopharynx, salivary glands and local lymph nodes (2). Approximately 90% of all HNCs are squamous cell carcinomas (HNSCCs), which arise from the mucosal lining in these regions (2). The 5-year survival rate for HNSCC is among the lowest of the most common types of cancer; having remained at 64-67% for the last ten years (3). Approximately 80-90% of cases of HNSCC are attributed to prolonged tobacco and/or alcohol use (2). However, only a small fraction of those who consume tobacco or alcohol develop this disease, suggesting that genetic factors are also important in its pathogenesis (4-6). Fundamental to the genetic basis of all cancers is the overexpression of oncogenes and/or silencing of tumor suppressor genes. Aberrations, such as deletions or mutations of these genes may lead to uncontrolled cell division and cancer development.

Ras-associated binding (Rab)-GTPases are the largest subfamily of small GTPases, and are involved in the regulation of intracellular vesicle transport and protein trafficking (7-12). Rab proteins associate with distinct membrane compartments within cells and determine the specificity of vesicle trafficking pathways; the nuclei for the assembly of multiprotein complexes (13). More than 60 mammalian Rab proteins have been identified to date, all of which exert their specific function by cycling between a GTP-bound active conformation and, following GTP hydrolysis, a GDP-bound inactive state (14).

Rab25 was identified in 1993 as a member of the Rab family. Rab25 is also known as Rab11c, due to its sequence homology with the Rab11a and Rab11b proteins (15). However, it is expressed only in epithelial cells, in contrast to the ubiquitously expressed Rab11a and Rab11b (15,16). Functional studies have demonstrated that the Rab11 subfamily is involved in transcytosis, endocytic sorting and transport across polarized epithelial cells, as well as in apical vesicle recycling (17,18).

He *et al* (16) reported that the expression of 9 human GTPases is upregulated in liver cancer and that 6 of these were Rab proteins. This was the first data that demonstrated an association between Rab25 and epithelial cancer. Subsequently, overexpression of Rab25 has been shown to be associated with

Correspondence to: Professor Nur Buyru, Department of Medical Biology, Istanbul University, Cerrahpasa Medical Faculty, 53 Kocamustafapasa Street, Kocamustafapasa, Fatih, Istanbul 34098, Turkey
E-mail: nbuyru@yahoo.com

Key words: Ras-associated binding 25 protein, Akt1, head and neck squamous cell carcinoma, tumor suppression, gene expression

numerous types of human cancer (19-21). However, recent studies have identified two opposing roles for Rab25 in tumor progression. Several groups have suggested that Rab25 exerts a tumor promoting function, and have proposed that its overexpression is associated with an increase in tumor aggression and invasiveness (22-25). Overexpression of Rab25 has been reported in ovarian (22-24), prostate (26), invasive breast (27), colon (15) and liver cancer (16), in addition to transitional cell carcinoma of the bladder (27,28) and Wilms' tumor (29), which indicates that Rab25 acts as an oncogene in these situations. By contrast, a documented association between loss of Rab25 expression and increased tumor development, indicates that Rab25 may function as a tumor suppressor in a number of types of cancer. Loss of Rab25 expression has been detected in certain breast and colon cancer tissues, and in a novel breast cancer cell line, which was generated from human mammary epithelial cells (30,31). More recently, Zhang *et al.* (25) reported that Rab25 is upregulated in the majority of bladder tumors and that this upregulation is associated with tumor invasion and metastasis. The *in vitro* studies by that group have also demonstrated that Rab25 exerts its oncogenic effect via the Akt/glycogen synthase kinase-3 β (GSK-3 β)/Snail pathway. These conflicting results indicate that Rab25 may exert different effects in different types of tumor. To the best of our knowledge, only one study has investigated the role of Rab25 in HNC cell lines (32), the results of which suggested that Rab25 is involved in tumor migration and metastasis in HNSCC. The aim of the present study was to investigate the function of Rab25 in human HNSCC tissue samples and to examine its association with the Akt pathway. Therefore, the expression of Rab25 in HNSCC tumors was measured using reverse transcription-quantitative polymerase chain reaction (RT-qPCR) and western blotting.

Materials and methods

Tissue samples. Paired normal and tumor samples were obtained from 76 patients with HNSCC, who underwent surgery at the Department of Otorhinolaryngology (Cerrahpasa Medical Faculty, Istanbul, Turkey) following receipt of written informed consent. This study was approved by the Cerrahpasa Medical Faculty Ethics Committee (Approval no. 83045809/11295). Clinicopathological characteristics, including patient age, gender, TNM staging, histological grade, invasion status and tumor location, are presented in Table I.

cDNA synthesis and RT-qPCR. Total RNA was extracted from tumor and adjacent non-tumor samples using the Pure-Link™ RNA Mini kit (Ambion Life Technologies, Carlsbad, CA, USA). Single-stranded cDNA was synthesized using the Revert-Aid first strand cDNA synthesis kit (Fermantas, Vilnius, Lithuania) and 300 ng of total RNA in a reaction volume of 20 μ l. Glucose-6-phosphate dehydrogenase (G6PD) was used as a reference gene for normalization. The resultant cDNA (2 μ l) was used for the Real-Time assay, which was performed in 20 μ l reaction volume, containing 1X LightCycler 480 Probes Master Mix (Roche Diagnostics, Mannheim, Germany), Rab25 (Integrated DNA Technologies, Inc., Toronto, ON, Canada) and G6PD gene-specific primers (Roche Diagnostics), and Universal Probe Library hydrolysis

probes (Roche Diagnostics) labeled with 6-Carboxyfluorescein or VIC at the 5'-end, and with Non-fluorescent Dark Quencer dye or HEX at the 3'-end, for Rab25 and G6PD, respectively. The following primer sequences were used: Forward, 5'-GCTGCTGTCAAGGCTCAGAT-3' and reverse, 5'-CCCACTGCACCACGATAGTA-3' for Rab25; forward, 5'-GAGCCAGATGCACTTCGTG-3' and reverse, 5'-GGGCTTCTCCAGCTCAATC-3' for G6PD. The target and reference genes were co-amplified in the same reaction. Amplification was performed at 95°C for 20 sec, 60°C for 15 sec and 72°C for 20 sec for 45 cycles, with an initial denaturation at 95°C for 10 min, using the Light Cycler 480 II platform (Roche Diagnostics). Changes in the expression levels were calculated using the 2^{- $\Delta\Delta$ Ct} method (33).

Western blotting. Tissue samples were rinsed with ice-cold phosphate-buffered saline and homogenized in a protease inhibitor (PMSF), containing protein extraction buffer (1X lysis buffer, 1X TBS, 1% Nonidet P-40, 0.5% sodium deoxycholate, 0.1% SDS, 0.004% sodium azide), in order to obtain whole cell lysate. Equal quantities of protein (30 μ g) from each sample were loaded onto 12% SDS-PAGE gels and electrophoresed at 165 V for 50 min at room temperature. Resolved protein samples were transferred to nitrocellulose membranes (Invitrogen Life Technologies, Carlsbad, CA, USA) using the iBlot® Dry Blotting system (Invitrogen Life Technologies) for western blot analysis. Following transfer, immunoblots were blocked overnight in 5% non-fat dry milk (w/v) in Tris-buffered saline (TBS), containing 20 mM Tris-HCl (pH 7.6), 150 mM NaCl and 0.1% Tween-20, and probed with the mouse anti-Rab25 monoclonal antibody, clone 12C3 (cat no. 05-1574; EMD Millipore, Billerica, MA, USA), which was diluted to 1/1,000 with 1% non-fat dry milk in TBS with Tween-20 (TBST; Santa Cruz Biotechnology, Inc., Dallas, TX, USA). In order to measure Akt1 or phosphorylated Akt1 protein levels, the blots were incubated with primary monoclonal mouse Akt1 (B1; cat. no. sc-5298; 1/2,000 dilution; Santa Cruz Biotechnology, Inc.) and mouse p-Akt1 (5.Ser 473; cat no. sc-293125; 1/2,000 dilution; Santa Cruz Biotechnology, Inc.) antibodies for 90 min at room temperature, respectively. The blots were washed with TBST three times and the protein content was visualized using HRP-conjugated goat anti-mouse secondary antibodies for Akt1 and p-Akt-1 (cat. no. sc-2005; 1/1,000 dilution; Santa Cruz Biotechnology, Inc.) and Rab25 (cat. no. AP181P; 1/1,000 dilution; EMD Millipore) for 60 min at room temperature. The protein bands were detected by the Western Lightening Chemiluminescence reagent (Invitrogen Life Technologies). The intensity of luminescence was quantified using the ImageJ 1.47 bundle with the Java analyzing program (<http://rsb.info.nih.gov/ij/download.html>).

Statistical analysis. The χ^2 test was performed to analyze the differences in expression levels between tumor and normal tissues. The correlation between expression levels and clinicopathological parameters was analyzed using the Spearman's Rho test. Statistical analysis was performed using IBM SPSS software (version 20.0.0; IBM SPSS, Armonk, NY, USA). For all statistical tests, P<0.05 was considered to indicate a statistically significant difference.

Table I. Association of Rab25 protein and mRNA expression with clinicopathological characteristics.

Characteristic	Patients, n (%)	Rab25 protein, n (%)		P-value	Rab25 mRNA, n (%)			P-value
		Decreased	Increased		Decreased	No change	Increased	
Location				0.492				0.976
Larynx	59 (77.6)	23 (52.3)	21 (47.7)		39 (66.1)	3 (5.1)	17 (28.8)	
Oral cavity	9 (11.8)	4 (57.1)	3 (42.9)		6 (66.7)	-	3 (33.3)	
Parotitis	5 (6.6)	3 (75.0)	1 (25.0)		4 (80.0)	-	1 (20.0)	
Paranasal sinus	3 (3.9)	2 (100.0)	0 (0.0)		2 (66.7)	-	1 (33.3)	
Stage				0.547				0.411
1	2 (2.6)	-	-		1 (50.0)	-	1 (50.0)	
2	27 (27.6)	12 (66.7)	6 (33.3)		14 (51.9)	2 (7.4)	4 (40.7)	
3	21 (35.5)	9 (50.0)	9 (50.0)		17 (63.0)	-	10 (37.0)	
4	26 (34.2)	11 (52.4)	10 (47.6)		19 (73.1)	1 (3.8)	6 (23.1)	
Histology				0.384				0.692
SCC	67 (88.2)	27 (54.0)	23 (46.0)		44 (65.7)	3 (4.5)	20 (29.8)	
Other	9 (11.8)	5 (71.4)	2 (28.6)		7 (57.1)	-	2 (42.9)	
Local invasion				0.126				0.532
Negative	18 (23.7)	7 (77.8)	2 (22.2)		11 (61.1)	1 (5.6)	6 (33.3)	
Positive	55 (72.4)	22 (50.0)	22 (50.0)		40 (72.7)	1 (1.8)	14 (25.5)	
Age, years				0.080				0.850
≥60	36 (47.4)	13 (44.8)	16 (55.2)		25 (69.4)	1 (2.8)	10 (27.8)	
<60	40 (52.6)	19 (67.9)	9 (32.1)		26 (65.0)	2 (5.0)	12 (30.0)	
Gender				0.450				0.692
Male	67 (88.2)	29 (58.0)	21 (42.0)		44 (65.7)	3 (4.5)	20 (29.8)	
Female	9 (11.8)	3 (42.9)	4 (57.1)		7 (77.8)	-	2 (22.2)	

Rab-25, RAS-associated binding protein 25; SCC, squamous cell carcinoma; n, number.

Table II. Median expression of Rab25 mRNA expression in tumor and normal tissues.

Tissue	Rab25 Ct (median)	G6PD Ct (median)	Δ Ct	$\Delta\Delta$ Ct	$2^{-\Delta\Delta$ Ct}
HNSCC	29.45	26.96	2.50	1.77	0.29
Normal	28.77	28.03	0.73	0	1

Rab25, RAS-associated binding protein 25; G6PD, glucose-6 phosphate dehydrogenase; HNSCC, head and neck squamous cell carcinoma; Ct, cycling threshold.

Results

Rab25 mRNA expression is decreased in HNSCC, although its expression is not correlated with tumor invasion. Rab25 mRNA expression was analyzed using RT-qPCR in samples from patients with HNSCC and compared with matched adjacent non-malignant tissues. Complete loss of Rab25 mRNA expression was observed in 9 out of 76 (11.8%) tumor samples. When the mean Δ Ct level of the remaining 67 samples was calculated, a 3.44-fold decrease in Rab25 expression was observed in the tumor samples compared with that in the non-malignant tissue samples, following normalization to G6PD (Table II). Decreased Rab25 expression was

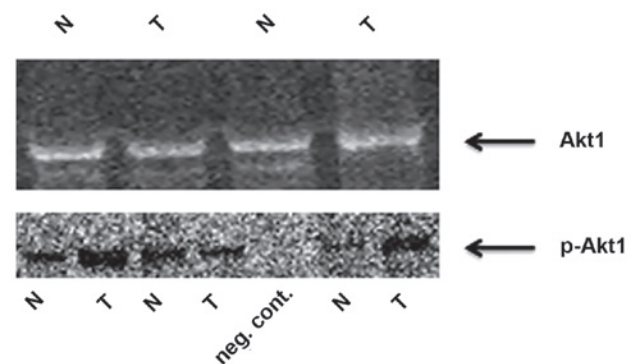


Figure 1. Representative western blot of tumor and matched non-tumor tissue samples. N, non-tumor; T, tumor; p-Akt1, phosphorylated-Akt1.

observed in 69.1% of cases. The majority of patients were male (88.2%), and had laryngeal cancer (77.6%) and SCC (88.2%). Fifty-five of the patients had evidence of vascular (26%), lymphatic (57.5%), perineural (39.7%) and/or cartilage invasion (43.7%). However, when the association between Rab25 expression and invasion was analyzed, no significant correlation was detected between Rab25 expression and tumor invasion ($P=0.529$). Similarly, no significant correlation was identified between Rab25 expression and other clinicopathological variables (Table I). None of the patients had evidence of metastasis to any other site.

Rab25 protein is downregulated and p-Akt1 is upregulated in HNSCC. The Rab25 protein was also downregulated in 56.1% of tumor tissues and this downregulation at the protein level was positively correlated with Rab25 mRNA expression. By contrast, p-Akt1 expression was increased in tumor tissues, compared with that in non-cancerous tissues (Fig. 1), and this upregulation in p-Akt1 levels was inversely correlated with Rab25 protein expression ($P=0.032$).

Discussion

Malfunction of the vesicular traffic system is an abnormal biological behavior that occurs in cancer cells. It has been shown that the Ras superfamily proteins regulate various steps of vesicular trafficking in eukaryotic cells (34). Rab25, a member of the Ras superfamily, has been demonstrated to be involved in cell proliferation and in protection of cells from apoptosis (22,23-35). Initially, Rab25 was hypothesized to be associated with epithelial cancer, following reports that Rab25 is one of 6 Rab proteins that are upregulated in hepatocellular carcinoma (17). Subsequently, Rab25 was identified as a driver of the 1q22 amplicon, which is frequently amplified in ovarian cancer (22-35). In a separate study, Rab25 expression was also shown to be correlated with histological grade and it was defined as an androgen response gene in ovarian cancer (36). Increased expression of Rab25 was observed in breast, ovarian and bladder cancer, and was associated with aggressive tumor features (22,23,28). By contrast, a tumor suppressor role for Rab25 has also been demonstrated in colon cancer, triple-negative breast cancer and esophageal SCC (ESCC) (31,37,38). These results indicate that changes in the expression of Rab25 may depend on the cell type and, therefore, the mechanism underlying the effect of this protein on cancer progression may be tumor-type specific. Although data on the involvement of the Rab25 in proliferation, survival, apoptotic signaling, angiogenesis, invasion and metastasis are available, to the best of our knowledge there is no evidence of the precise molecular mechanisms underlying its effects. One study has suggested that it affects TIMP1-associated tumor growth and angiogenesis (39), while another reported that Rab25 is a regulator of cellular bioenergetics in cancer (40). Caswell *et al* (41) hypothesized that Rab25 promotes $\alpha 5\beta 1$ integrin-containing vesicle trafficking to the membrane of pseudopodia tips, thereby facilitating cell invasion in ovarian cancer. A further study demonstrated that overexpression of Rab25 in rat intestinal cells may lead to microtubule-dependent transformation *in vitro* and tumor formation *in vivo* (42). Multiple studies have implicated Rab25 in invasion and cell migration. However, the results have been

contradictory, with certain studies demonstrating an association between upregulation of Rab25 gene expression, and metastasis and invasion, while other studies have produced the opposite result. In order to evaluate the mechanisms underlying its effects on invasion and metastasis, functional experiments have been performed. Zhang *et al* (25) reported that Rab25 contributes to metastasis through induction of epithelial mesenchymal transition and activation of the Akt/GSK-3 β /Snail pathway in bladder cancer. Increased Akt phosphorylation has also been associated with overexpression of Rab25 in aggressive breast and ovarian cancer *in vitro* (22). Tong *et al* (37) reported that Rab25 mediates tumorigenicity, metastasis and angiogenesis in ESCC, via deregulation of FAK-Raf-MEK1/2-ERK signaling. By contrast, Amornphimolthan *et al* (32) demonstrated that Rab25 regulated cell migration and metastasis by modulating the epidermal growth factor receptor-mediated pathway in oral cancer. Until recently there were no reports on the expression level of Rab25 in HNSCC. However, in 2013, Amornphimolthan *et al* (32) reported that Rab25 functions as a tumor suppressor in HNSCC. In their study, the expression of Rab25 *in vitro* and *in vivo* was measured, in association with invasion and metastasis in HNSCC, and it was concluded that downregulation of Rab25 is associated with invasion and metastasis in this disease. However, to date that have been no studies investigating the role of Rab25 in human HNSCC. Therefore, in order to examine the effect of Rab25 in HNSCC the present study was conducted using tissue samples from patients with this disease. In accordance with the results reported by Amornphimolthan *et al* (32), the present study demonstrated that Rab25 was significantly downregulated in 69.1% and 56.1% of the HNSCC tumor tissue samples at the mRNA and protein levels, respectively. However, in contrast to the results of the study by Amornphimolthan *et al* (32), Rab25 downregulation was not associated with tumor invasion in the current study ($P=0.529$). In accordance with *in vitro* studies reported by Zhang *et al* (25), downregulation of Rab25 was associated with increased Akt1 phosphorylation, which is an indicator of Akt1 activation. The results of a study by Tang *et al* (43) suggested a correlation between loss of Rab25 expression, and H-ras or K-ras mutations in breast cancer cell lines. In the present study group all of the patients were K-ras-negative. Therefore, the current results do not support the hypothesis proposed by Tang *et al*.

The majority of studies published on this subject have been performed using cell lines and animal models to investigate gene expression profiles. The regulation of gene expression *in vivo* or under physiological conditions may be distinct from that observed *in vitro*. To the best of our knowledge, this is the first study to investigate Rab25 expression levels in human HNSCC tissue samples. The results indicate that Rab25 functions as a tumor suppressor in HNSCC. However, its downregulation was not found to be associated with lymphatic, vascular or cartilage invasion. All patients in the current study population were metastasis-free, and in the absence of distant metastasis, Rab25 was shown to be downregulated at the mRNA and protein level in HNSCC tumor tissues. This downregulation was associated with an increase in Akt1 phosphorylation. The current results indicate that Rab25 primarily functions as a tumor suppressor in HNSCC and exerts its effect by preventing Akt1 phosphorylation, which is a molecule that is known to activate the mTOR pathway. In conclusion, Rab25

may have exert tumor suppressor or oncogenic effects during tumor progression, depending on the cell type; suppressing tumor progression by blocking Akt1 phosphorylation in particular types of tumor and promoting progression by phosphorylating Akt1 in others. However, further functional studies are required to elucidate the precise mechanisms underlying these effects.

Acknowledgements

This study was supported by the Research Fund of Istanbul University (grant nos. 13732 and 34503).

References

- Warnakulasuriya S: Global epidemiology of oral and oropharyngeal cancer. *Oral Oncol* 45: 309-316, 2009.
- Hashibe M, Brennan P, Chuang SC, *et al*: Interaction between tobacco and alcohol use and the risk of head and neck cancer: Pooled analysis in the International Head and Neck Cancer Epidemiology Consortium. *Cancer Epidemiol Biomarkers Prev* 18: 541-550, 2009.
- Howlander N, Noone AM, Krapcho M, *et al* (eds): SEER Cancer Statistics Review, 1975-2010, National Cancer Institute. Bethesda, MD, http://seer.cancer.gov/csr/1975_2010/, based on November 2012 SEER data submission, posted to the SEER web site, April 2013.
- Báez A: Genetic and environmental factors in head and neck cancer genesis. *J Environ Sci Health C Environ Carcinog Ecotoxicol Rev* 26: 174-200, 2008.
- Gleich LL and Salamone FN: Molecular genetics of head and neck cancer. *Cancer Control* 9: 369-378, 2002.
- Demokan S, Suoglu Y, Demir D, *et al*: Microsatellite instability and methylation of the DNA mismatch repair genes in head and neck cancer. *Ann Oncol* 17: 995-999, 2006.
- Pereira-Leal JB and Seabra MC: Evolution of the Rab family of small GTP-binding proteins. *J Mol Biol* 313: 889-901, 2001.
- Zerial M and McBride H: Rab proteins as membrane organizers. *Nat Rev Mol Cell Biol* 2: 107-117, 2001.
- Deneka M, Neef M and van der Sluijs P: Regulation of membrane transport by rab GTPases. *Crit Rev Biochem Mol Biol* 38: 121-142, 2003.
- Pfeffer S and Aivazian D: Targeting Rab GTPases to distinct membrane compartments. *Nat Rev Mol Cell Biol* 5: 886-896, 2004.
- Jordens I, Marsman M, Kuijl C and Neefjes J: Rab proteins, connecting transport and vesicle fusion. *Traffic* 6: 1070-1077, 2005.
- Schwartz SL, Cao C, Pylypenko O, Rak A and Wandinger-Ness A: Rab GTPases at a glance. *J Cell Sci* 120: 3905-3910, 2007.
- Somsel Rodman J and Wandinger-Ness A: Rab GTPases coordinate endocytosis. *J Cell Sci* 113 Pt 2: 183-92, 2000.
- Vetter IR and Wittinghofer A: The guanine nucleotide-binding switch in three dimensions. *Science* 294: 1299-1304, 2001.
- Goldenring JR, Shen KR, Vaughan HD and Modlin IM: Identification of a small GTP-binding protein, Rab25, expressed in the gastrointestinal mucosa, kidney and lung. *J Biol Chem* 268: 18419-18422, 1993.
- He H, Dai F, Yu L, *et al*: Identification and characterization of nine novel human small GTPases showing variable expressions in liver cancer tissues. *Gene Expr* 10: 231-242, 2002.
- Casanova JE, Wang X, Kumar R, *et al*: Association of Rab25 and Rab11a with the apical recycling system of polarized Madin-Darby canine kidney cells. *Mol Biol Cell* 10: 47-61, 1999.
- Wang X, Kumar R, Navarre J, *et al*: Regulation of vesicle trafficking in madin-darby canine kidney cells by Rab11a and Rab25. *J Biol Chem* 275: 29138-29146, 2000.
- Agarwal R, Jurisica I, Mills GB and Cheng KW: The emerging role of the RAB25 small GTPase in cancer. *Traffic* 10: 1561-1568, 2009.
- Cheng KW, Lahad JP, Gray JW and Mills GB: Emerging role of RAB GTPases in cancer and human disease. *Cancer Res* 65: 2516-2519, 2005.
- Mitra S, Cheng KW and Mills GB: Rab25 in cancer: A brief update. *Biochem Soc Trans* 40: 1404-1408, 2012.
- Cheng KW, Lahad JP, Kuo WL, *et al*: The RAB25 small GTPase determines aggressiveness of ovarian and breast cancers. *Nat Med* 10: 1251-1256, 2004.
- Fan Y, Xin XY, Chen BL and Ma X: Knockdown of RAB25 expression by RNAi inhibits growth of human epithelial ovarian cancer cells in vitro and in vivo. *Pathology* 38: 561-567, 2006.
- Liu Y, Tao X, Jia L, *et al*: Knockdown of RAB25 promotes autophagy and inhibits cell growth in ovarian cancer cells. *Mol Med Rep* 6: 1006-1012, 2012.
- Zhang J, Wei J, Lu J, *et al*: Overexpression of Rab25 contributes to metastasis of bladder cancer through induction of epithelial-mesenchymal transition and activation of Akt/GSK-3 β /Snail signaling. *Carcinogenesis* 34: 2401-2408, 2013.
- Calvo A, Xiao N, Kang J, *et al*: Alterations in gene expression profiles during prostate cancer progression: Functional correlations to tumorigenicity and down-regulation of selenoprotein-P in mouse and human tumors. *Cancer Res* 62: 5325-5335, 2002.
- Wang W, Goswami S, Lapidus K, *et al*: Identification and testing of a gene expression signature of invasive carcinoma cells within primary mammary tumors. *Cancer Res* 64: 8585-8594, 2004.
- Mor O, Nativ O, Stein A, *et al*: Molecular analysis of transitional cell carcinoma using cDNA microarray. *Oncogene* 22: 7702-7710, 2003.
- Natrajan R, Williams RD, Hing SN, *et al*: Array CGH profiling of favourable histology Wilms tumours reveals novel gains and losses associated with relapse. *J Pathol* 210: 49-58, 2006.
- Cheng JM, Ding M, Aribi A, *et al*: Loss of RAB25 expression in breast cancer. *Int J Cancer* 118: 2957-2964, 2006.
- Goldenring JR and Nam KT: Rab25 as a tumour suppressor in colon carcinogenesis. *Br J Cancer* 104: 33-36, 2011.
- Amornphimoltham P, Rechache K, Thompson J, *et al*: Rab25 regulates invasion and metastasis in head and neck cancer. *Clin Cancer Res* 19: 1375-1388, 2013.
- Schmittgen TD and Livak KJ: Analyzing real-time PCR data by the comparative C(T) method. *Nat Protoc* 3: 1101-1108, 2008.
- Grosshans BL, Ortiz D and Novick P: Rabs and their effectors: Achieving specificity in membrane traffic. *Proc Natl Acad Sci USA* 103: 11821-11827, 2006.
- Cheng KW, Lu Y and Mills GB: Assay of Rab25 function in ovarian and breast cancers. *Methods Enzymol* 403: 202-215, 2005.
- Sheach LA, Adeney EM, Kucukmetin A, *et al*: Androgen-related expression of G-proteins in ovarian cancer. *Br J Cancer* 101: 498-503, 2009.
- Tong M, Chan KW, Bao JY, *et al*: Rab25 is a tumor suppressor gene with antiangiogenic and anti-invasive activities in esophageal squamous cell carcinoma. *Cancer Res* 72: 6024-6035, 2012.
- Cheng JM, Volk L, Janaki DK, Vyakaranam S, Ran S and Rao KA: Tumor suppressor function of Rab25 in triple-negative breast cancer. *Int J Cancer* 126: 2799-2812, 2010.
- Bigelow RL, Williams BJ, Carroll JL, *et al*: TIMP-1 overexpression promotes tumorigenesis of MDA-MB-231 breast cancer cells and alters expression of a subset of cancer promoting genes in vivo distinct from those observed in vitro. *Breast Cancer Res Treat* 117: 31-44, 2009.
- Cheng KW, Agarwal R, Mitra S, *et al*: Rab25 increases cellular ATP and glycogen stores protecting cancer cells from bioenergetic stress. *EMBO Mol Med* 4: 125-141, 2012.
- Caswell PT, Spence HJ, Parsons M, White DP, Clark K, Cheng KW, Mills GB, Humphries MJ, Messent AJ, Anderson KI, *et al*: Rab25 associates with alpha5beta1 integrin to promote invasive migration in 3D microenvironments. *Dev Cell* 13: 496-510, 2007.
- Lapierre LA, Caldwell CM, Higginbotham JN, Avant KM, Hall J, Beauchamp RD and Goldenring JR: Transformation of rat intestinal epithelial cells by overexpression of Rab25 is microtubule dependent. *Cytoskeleton (Hoboken)* 68: 97-111, 2011.
- Tang BL: Is Rab25 a tumor promoter or suppressor-context dependency on RCP status? *Tumor Biol* 31: 359-361, 2010.