

CORRECTION

# Correction: Brain Extraction Using Label Propagation and Group Agreement: Pincram

Rolf A. Heckemann, Christian Ledig, Katherine R. Gray, Paul Aljabar, Daniel Rueckert, Joseph V. Hajnal, Alexander Hammers

The images for Figs 1 and 2 are incorrectly switched. The image that appears as Fig 1 should be Fig 2, and the image that appears as Fig 2 should be Fig 1. The figure captions appear in the correct order.

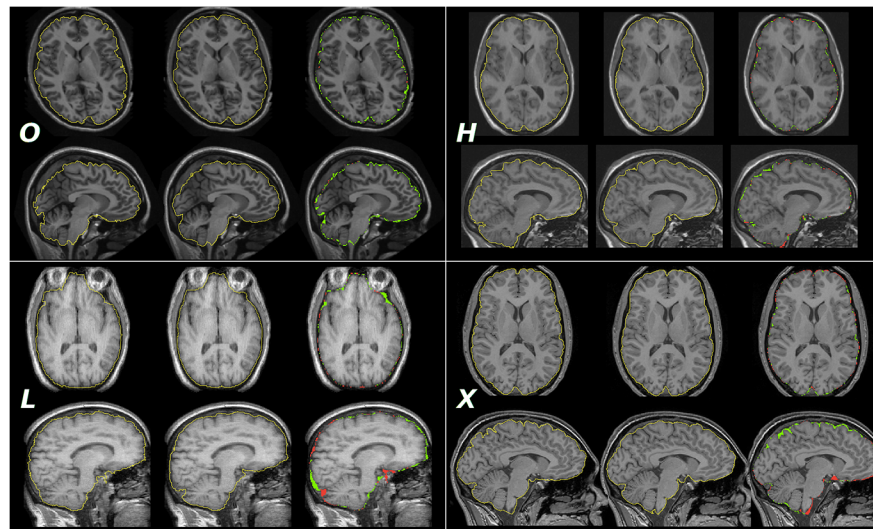


 OPEN ACCESS

**Citation:** Heckemann RA, Ledig C, Gray KR, Aljabar P, Rueckert D, Hajnal JV, et al. (2015) Correction: Brain Extraction Using Label Propagation and Group Agreement: Pincram. PLoS ONE 10(8): e0135746. doi:10.1371/journal.pone.0135746

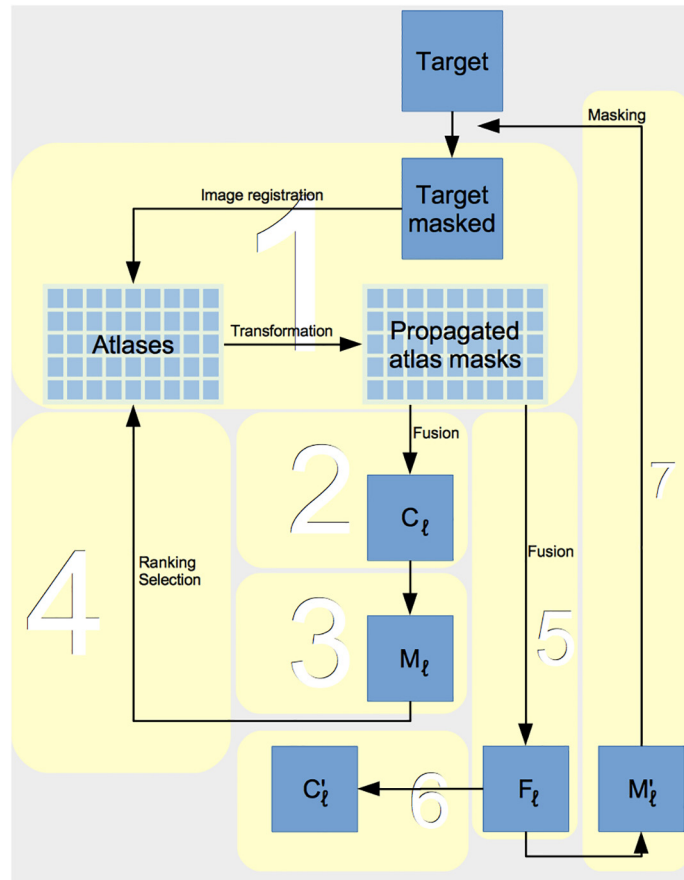
**Published:** August 12, 2015

**Copyright:** © 2015 Heckemann et al. This is an open access article distributed under the terms of the [Creative Commons Attribution License](https://creativecommons.org/licenses/by/4.0/), which permits unrestricted use, distribution, and reproduction in any medium, provided the original author and source are credited.



**Fig 1. Sample images chosen randomly from each dataset.** Images were visually centred at the level of the commissures approximately in the centre of the left thalamus to acquire a transverse (top rows) and a sagittal (bottom rows) slice. Left column, *O*, *H*, *L*: manual reference masks, *X*: generated mask (*OX*setup). Middle column, *O*, *H*, *L*, *X*: generated masks (*HX* setup in the case of *X*). Right column, *O*, *H*, *L*, *X*: discrepancies between the masks—green indicates overinclusion, red indicates underinclusion. Individual JCs were 0.9512 (*O*), 0.9704 (*H*), 0.9647 (*L*), and 0.9503 (*X*).

doi:10.1371/journal.pone.0135746.g001



**Fig 2. Overview diagram of pinfram workflow.** Step numbers in the text correspond to numbered boxes.  $C_l$ : pre-selection fused mask;  $M_l$ : tight margin (boundary neighborhood) mask;  $F_l$ : fuzzy label summed from rank-selected subset;  $C'_l$ : brain mask generated from  $F_l$  by thresholding and binarization;  $M'_l$ : wide margin mask generated from  $F_l$  by thresholding and binarization

doi:10.1371/journal.pone.0135746.g002

## Reference

1. Heckemann RA, Ledig C, Gray KR, Aljabar P, Rueckert D, Hajnal JV, et al. (2015) Brain Extraction Using Label Propagation and Group Agreement: Pinfram. PLoS ONE 10(7): e0129211. doi: [10.1371/journal.pone.0129211](https://doi.org/10.1371/journal.pone.0129211) PMID: [26161961](https://pubmed.ncbi.nlm.nih.gov/26161961/)