



Published in final edited form as:

J Adolesc Health. 2014 January ; 54(1): 54–60.e9. doi:10.1016/j.jadohealth.2013.08.003.

Patterns of Current Use of Tobacco Products Among U.S. High School Students for 2000–2012—Findings From the National Youth Tobacco Survey

René A. Arrazola, M.P.H.* , Nicole M. Kuiper, M.P.H., and Shanta R. Dube, Ph.D., M.P.H.

Office on Smoking and Health, National Center for Chronic Disease Prevention and Health Promotion, Centers for Disease Control and Prevention, Atlanta, Georgia

Abstract

Purpose—The purpose of this study was to assess patterns and trends of tobacco use among high school students to better understand which products are used individually or concurrently.

Methods—Data from the National Youth Tobacco Survey from 2000 through 2012 were used to assess patterns and trends of current tobacco use (cigarettes, cigars, smokeless tobacco, and other tobacco products) among U.S. high school students. We assessed use of products individually and concurrently.

Results—During 2000–2012, overall linear declines were observed in current use of any tobacco product from 33.6% to 20.4% ($p < .05$), current use of only 1 tobacco product, from 18.8% to 10.5% ($p < .05$), and current poly tobacco use, from 14.7% to 9.9% ($p < .05$), among high school students. Overall current use of only cigarettes had both a linear decline, from 14.0% to 4.7%, as well as a quadratic trend.

Conclusions—During 2000–2012, the most significant overall decline observed was for students who reported smoking only cigarettes. The results suggest that more data on the use of multiple tobacco products, not just cigarettes, is needed to guide tobacco prevention and control policies and programs.

Keywords

Current tobacco use; High school students; United States

Tobacco use continues to be the single leading preventable cause of death and disease in the United States [1], and most tobacco use begins before the age of 18 [2]. Cigarette smoking remains prevalent among youth, with approximately one of five high school students reporting current smoking in 2011 [3]. Although declines in youth smoking rates were observed over the past two decades, more recently, the decline in current cigarette smoking

*Address correspondence to: René A. Arrazola, M.P.H., Office on Smoking and Health, National Center for Chronic Disease Prevention and Health Promotion, Centers for Disease Control and Prevention, 4770 Buford Highway, N.E., MS F-79, Atlanta, GA 30341. RArrazola@cdc.gov (R.A. Arrazola).

Disclaimer: The findings and conclusions in this report are those of the authors and do not necessarily represent the official position of the Centers for Disease Control and Prevention.

Conflicts of Interest: The authors have no conflicts of interest or financial disclosures to report.

is occurring at a slower rate than was observed during 1997–2003 [4]. The rates observed for use of other tobacco products (e.g., cigars, smokeless tobacco) have not changed during this period [5].

A conclusion from the 2010 Surgeon General's Report supports previous findings that nicotine is the key compound that produces the addictive effects of tobacco products [6], and all tobacco products contain nicotine [7]. The concurrent use of multiple tobacco products is a public health concern, especially during adolescence when young people may experiment with various tobacco products [2], which may increase their risk of nicotine dependence. Research has suggested that use of multiple tobacco products concurrently may lead to greater addiction among users of these products [2]. Furthermore, among high school students, use of tobacco in the past 30 days is associated with the use of alcohol and other illegal substances [8], and the relationship is even stronger when students report using two or more tobacco products [9]. These findings indicate a need to monitor the use of all types of tobacco products, both individual and concurrently, because young people who use multiple tobacco products are potentially increasing their exposure to nicotine and their risk of dependence on nicotine [10].

Given that the rate of decline has slowed in recent years for current use of cigarettes but not for other tobacco products (e.g., cigars, smokeless tobacco) among young people [2], researchers need to understand better the use of multiple products over time among youth. At present, limited information exists on the current use of specific tobacco products that high school students use individually or concurrently. The purpose of this study is to assess the prevalence of the current use of cigarettes, cigars, smokeless tobacco, pipe tobacco, bidis, and kreteks alone or in combination with one another and to identify any changes over time.

Methods

Data source and study population

We used data from the National Youth Tobacco Survey (NYTS) from 2000 through 2012. The NYTS is a school-based, cross-sectional survey that collects information on key tobacco indicators, such as behaviors and attitudes, from middle school (grades 6–8) and high school (grades 9–12) students and provides national estimates on these indicators. A more comprehensive description of the NYTS and its methodology can be found at http://www.cdc.gov/tobacco/data_statistics/surveys/nyts/index.htm.

Our study focused on patterns and trends in tobacco use among high school students for six specific products: cigarettes, cigars, smokeless tobacco, pipe tobacco, bidis, and kreteks. We limited our analysis to high school students who responded to all questions about their use of these products in the past 30 days; those with missing responses were excluded. Initial sample sizes ranged from 19,350 (highest) students in 2000 to 9,720 (lowest) in 2011 (Table 1). For our study, sample sizes ranged from 18,219 (highest) students in 2000 to 9,198 (lowest) in 2011.

Measures

The following questions were used to assess current tobacco use: (1) “During the past 30 days, on how many days did you smoke cigarettes?” (2) “During the past 30 days, on how many days did you smoke cigars, cigarillos, or little cigars?” (3) “During the past 30 days, on how many days did you use chewing tobacco, snuff, or dip?” (4) “During the past 30 days, on how many days did you smoke tobacco in a pipe?” (5) “During the past 30 days, on how many days did you smoke bidis?” and (6) “During the past 30 days, on how many days did you smoke kreteks?” Note that in 2012 the bidis and kreteks questions changed to “In the past 30 days, which of the following products have you used on at least one day?” and students could select different products of which “bidis (small brown cigarettes wrapped in a leaf)” and “clove cigarettes (kreteks)” were possible selections. We defined “any current tobacco” as using one or use more of these six products on at least 1 day in the past 30 days; respondents who did not use any products on at least 1 day of the past 30 days were categorized as “no current tobacco use” (Figure 1). Because of small sample sizes, we collapsed use of pipe tobacco, bidis, and kreteks in the past 30 days into the category “other tobacco product.”

Any current tobacco use was then examined as two mutually exclusive categories: “current use of only 1 tobacco product” and “current poly tobacco use” (Figure 1). Current use of only 1 tobacco product was then examined as four mutually exclusive categories: “current use of only cigarettes,” “current use of only smokeless tobacco,” “current use of only cigars,” and “current use of only 1 other tobacco product” (Figure 1).

Current use of 2 or more tobacco products was categorized as “current poly tobacco use” (Figure 1). Current poly tobacco use was then examined as two mutually exclusive categories: “current use of only 2 tobacco products” and “current use of at least 3 tobacco products” (Figure 1).

Current use of only 2 tobacco products was examined as two mutually exclusive categories: “current use of cigarettes and 1 tobacco product” and “no current use of cigarettes but only 2 tobacco products” (Figure 1). Current use of cigarettes and 1 tobacco product was then examined as three mutually exclusive categories: “current use of only cigarettes and smokeless tobacco,” “current use of only cigarettes and cigars,” and “current use of only cigarettes and only 1 other tobacco product” (Figure 1).

Current use of at least 3 tobacco products was examined as two mutually exclusive categories: “current use of cigarettes and at least 2 tobacco products” and “no current use of cigarettes but at least 3 tobacco products” (Figure 1). Current use of cigarettes and at least 2 tobacco products was then examined as five mutually exclusive categories: “current use of only cigarettes, cigars, and smokeless tobacco;” “current use of only cigarettes, smokeless tobacco, and at least 1 other tobacco product;” “current use of only cigarettes, cigars, and at least 1 other tobacco product;” “current use of only cigarettes and at least 2 other tobacco products;” and “current use of cigarettes, smokeless tobacco, cigars, and at least 1 other tobacco product” (Figure 1).

Analysis

All analyses took into account this study's multistage probability design. Data were adjusted for nonresponse and weighted to provide nationally representative prevalence estimates of current tobacco use (and each of its stratifications) overall and for selected demographic characteristics. Results where the denominator was less than 50 or the relative standard error was higher than 30% were marked as statistically unstable. We used orthogonal polynomials to perform multinomial logistic regression analyses to simultaneously assess for linear and quadratic trends during 2000–2012.

Our models used the following outcomes: Outcome 1 had two possible outcomes: “no current tobacco use” and “any current tobacco use.” Outcome 2 had three possible outcomes: “no current tobacco use,” “current use of only 1 tobacco product,” and “current poly tobacco use.” Outcome 3 had four possible outcomes: “no current tobacco use,” “current use of only 1 tobacco product,” “current use of only 2 tobacco products,” and “current use of at least 3 tobacco products.” Outcome 4 had six possible outcomes: “no current tobacco use,” “current use of only 1 tobacco product,” “current use of cigarettes and 1 tobacco product,” “no current cigarette use but only 2 tobacco products,” “current use of cigarettes and at least 2 tobacco products,” and “no current use of cigarettes but at least 3 tobacco products.” Outcome 5 had fifteen possible outcomes: “no current tobacco use,” “current use of only cigarettes,” “current use of only smokeless tobacco,” “current use of only cigars,” “current use of only 1 other tobacco product,” “current use of only cigarettes and smokeless tobacco,” “current use of only cigarettes and cigars,” “current use of only cigarettes and only 1 other tobacco product,” “no current cigarette use but only 2 tobacco products,” “current use of only cigarettes, cigars, and smokeless tobacco,” “current use of only cigarettes, smokeless tobacco, and at least 1 other tobacco product,” “current use of only cigarettes, cigars, and at least 1 other tobacco product,” “current use of only cigarettes and at least 2 other tobacco products,” “current use of cigarettes, smokeless tobacco, cigars, and at least 1 other tobacco product,” and “no current use of cigarettes but at least 3 tobacco products.”

Multinomial logistic regression analysis was used to compare all outcomes for Outcomes 1–5 with “no current tobacco use.” Our overall model controlled for sex, race/ethnicity, and grade. The models stratified by sex controlled for race/ethnicity and grade, whereas those stratified by race/ethnicity controlled for sex and grade, and those stratified by grade controlled for sex and race/ethnicity. Linear and quadratic trends were considered to be present if $p < .05$. We used SAS-Callable SUDAAN 11.0 (RTI International, Research Triangle Park, NC) to calculate all results.

Results

Overall

During 2000–2012, significant linear downward trends were observed for current tobacco use (33.6% to 20.4%), current use of only 1 tobacco product (18.8% to 10.5%), current poly tobacco use (14.7% to 9.9%), current use of only 2 tobacco products (9.0% to 6.0%), current use of cigarettes and 1 tobacco product (7.9% to 4.7%), current use of only cigarettes and

smokeless tobacco (1.2% to 1.0%), current use of only cigarettes and cigars (4.9% to 3.1%), and current use of only cigarettes, cigars, and at least 1 other tobacco product (2.4% to 1.2%); a significant linear and quadratic (nonlinear) trend was observed for current use of only cigarettes (14.0% to 4.7%) among U.S. high school students. No significant trends were observed for any other categories (Table 1). In 2012, 8.3% of high school students currently used cigarettes and at least 1 tobacco product.

Sex

Among males, during 2000–2012, significant linear downward trends were observed for current tobacco use (37.5% to 25.3%), current use of only 1 tobacco product (16.8% to 11.5%), current use of only cigarettes (9.4% to 3.8%), current use of only 2 tobacco products (11.8% to 7.7%), current use of cigarettes and 1 tobacco product (9.9% to 5.5%), current use of only cigarettes and cigars (6.5% to 3.5%), and current use of only cigarettes, cigars, and at least 1 other tobacco product (3.1% to 1.6%) (Table 2, which can be found in the online edition of this article). Among females, significant linear downward trends were only observed for current tobacco use (29.6% to 15.4%), current use of only 1 tobacco product (20.8% to 9.5%), current use of only cigarettes (18.6% to 5.7%), and current use of only cigarettes and only 1 other tobacco product (2.2% to .7%). In 2012, 11.3% of high school males currently used cigarettes and at least 1 tobacco product, and among females it was 5.3%.

Race/Ethnicity

During 2000–2012, among non-Hispanic whites, significant linear downward trends were observed for current tobacco use (37.1% to 21.9%), current use of only 1 tobacco product (20.5% to 10.7%), current use of cigarettes and 1 tobacco product (8.8% to 5.1%), current use of only cigarettes and cigars (5.2% to 3.0%), and current use of only cigarettes, cigars, and at least 1 other tobacco product (2.6% to 1.4%); a significant linear and quadratic trend was observed for current use of only cigarettes (16.0% to 5.4%) (Table 3, which can be found in the online edition of this article). Among non-Hispanic blacks, a significant linear downward trend was observed for current use of only cigarettes (8.0% to 2.7%); significant linear and quadratic trends were observed for current tobacco use (25.4% to 19.8%) and current use of only 1 tobacco product (15.8% to 13.2%). Among Hispanics, a significant linear and quadratic trend was observed for current use of only cigarettes (9.8% to 4.1%). Among non-Hispanic others (Asians, American Indians/Alaska Natives, or Native Hawaiian/Other Pacific Islanders), significant linear downward trends were observed for current tobacco use (25.6% to 11.2%), current use of only 1 tobacco product (14.0% to 6.7%), current poly tobacco use (11.5% to 4.5%), and current use of only 2 tobacco products (6.0% to 2.4%). In 2012, 9.3% of high school non-Hispanic whites currently used cigarettes and at least 1 tobacco product. The proportion was 5.7% among non-Hispanic blacks, 8.4% among Hispanics, and 3.9% among non-Hispanic others.

Grade

During 2000–2012, among 9th graders, significant linear downward trends were observed for current tobacco use (26.5% to 14.2%), current use of only 1 tobacco product (15.0% to 7.1%), current use of only cigarettes (10.9% to 3.1%), current poly tobacco use (11.5% to

7.1%), current use of only 2 tobacco products (6.7% to 4.4%), and current use of cigarettes and 1 tobacco product (5.9% to 3.2%); a significant linear and quadratic trend was observed for current use of only cigarettes and cigars (3.8% to 2.3%) (Table 4, which can be found in the online edition of this article). Among 10th graders, significant linear downward trends were observed for current tobacco use (33.6% to 18.8%), current use of only 1 tobacco product (18.3% to 9.7%), current use of only cigarettes (13.6% to 4.8%), current use of only 2 tobacco products (9.1% to 5.1%), and current use of cigarettes and 1 tobacco product (7.9% to 4.2%). Among 11th graders, significant linear downward trends were observed for current tobacco use (35.8% to 21.8%), current use of only 1 tobacco product (19.8% to 11.3%), and current use of only cigarettes, cigars, and 1 other tobacco product (2.5% to 1.2%); a significant linear and quadratic trend was observed for current use of only cigarettes (14.6% to 5.1%). Among 12th graders, significant linear downward trends were observed for current tobacco use (41.0% to 28.0%), current use of only cigarettes (18.3% to 6.1%), current use of cigarettes and 1 tobacco product (9.7% to 6.7%), current use of only cigarettes and cigars (5.9% to 4.3%), and current use of at least 3 tobacco products (5.9% to 4.8%); a significant linear and quadratic trend was observed for current use of only 1 tobacco product (23.9% to 14.6%). In 2012, 11.3% of 12th graders currently used cigarettes and at least 1 tobacco product. The proportion was 8.9% among 11th graders, 7.8% among 10th graders, and 5.8% among 9th graders.

Discussion

We estimate that, in 2012, approximately one of five high school students in the United States were currently using some form of tobacco, and nearly half of this group were poly tobacco users. Our findings that the prevalence of poly tobacco use among high school students is relatively high and that over 80% of poly tobacco users in 2012 also smoked cigarettes are consistent with results from previous studies [10,11]. Among specific tobacco products, significant downward trends observed during the study period were for the use of certain cigarette categories.

Few studies have investigated concurrent, or poly, tobacco use in adolescents [11], and none have investigated it at the detailed level of this study. Previous research has found that poly tobacco use is more likely to occur in specific subgroups of young people, especially when stratified by both sex and race/ethnicity [2], which our study did not explore. The results of our study indicate differences in poly tobacco use by sex. This finding is supported by a recent report from the U.S. Surgeon General [2], which presented similar estimates for high school males and females that were based on data from the National Youth Risk Behavior Survey. In that analysis, more than 50% of high school males and approximately 30% of high school females who used tobacco used multiple products concurrently [2].

By examining tobacco use in detail, researchers can get a comprehensive view of use among youth, as well as insight into the use of specific products. For example, our analysis found that in 2012 nearly 50% of all high school students who were current tobacco users were poly tobacco users, and 35.8% of current tobacco users did not smoke cigarettes.

Poly use of tobacco products may contribute to the development of nicotine dependence among adolescents. A 2008 study found that the use of other tobacco products by cigarette smokers is associated with higher levels of nicotine dependence in young adults [12]. Another study found that current established smokers had the highest rate of current use of other tobacco products, suggesting a hastening of nicotine dependence for poly tobacco users who smoke cigarettes [8]. Although a cross-sectional study cannot follow the trajectories of addiction, the longitudinal studies that have looked at this topic have only focused on cigarette use [2], and none have looked at the trajectories of addiction for other types of tobacco use. Furthermore, no studies have looked at the risks and behavioral factors associated with poly tobacco use among youth, and the available studies that attempted to look at factors associated with poly tobacco use have focused only on cigarette users who use other tobacco products [8,10,11,13]. Some of these studies have found that young people who use cigarettes and other tobacco products may be at risk for multiple unhealthy behaviors that compromise their current and future health [8,10].

The results of our study can be used to guide policy, programmatic, and regulatory efforts to prevent and control tobacco use. The decline in current use of any tobacco since the early 2000s appears to be based in large part on declines in current use of only cigarettes, which lends credibility to the evidence that policy and programmatic efforts designed to reduce cigarette use among young people have been effective [2]. However, programs may need to do more to address the use of noncigarette tobacco products and the use of two or more tobacco products concurrently among adolescents. Furthermore, to fill the demand for cigarette flavors banned by the Family Smoking Prevention and Tobacco Control Act [14] in 2009, the tobacco industry expanded marketing and production of flavored cigars that look and are smoked like cigarettes [15]. The industry has also increased production and promotion of roll-your-own tobacco, which is not subject to federal excise taxes and thus is cheaper than cigarettes [16–18]. Consequently, per capita consumption of loose-leaf tobacco and cigars has increased since 2000 [19]. Recent data also show that advertisement and promotional expenditures for smokeless tobacco products increased by approximately \$200 million during 1997–2006 and again by the same amount during 2006–2008 [20].

Further research may help determine whether these factors and the relatively lower price of smokeless tobacco and cigars compared with cigarettes [21] may be contributing to the lack of decline in their use observed in our study. Strategies to prevent the use of any tobacco products by young people need to be developed, tested, and implemented population-wide as a way to further reduce all tobacco use among young people. These strategies should be used in conjunction with current tobacco control strategies that focus mainly on cigarette smoking.

Our findings are subject to at least six limitations. First, the data were collected from students attending either public or private high schools and might not be representative of all youth in the United States, especially those who were not enrolled in school. Second, the analysis only focused on youth who attended high school and did not include students who attended middle school. Third, reporting and recall bias might have been introduced because of the sensitivity of the questions or because some questions asked about past behaviors. Fourth, our analysis did not examine frequency and intensity of the tobacco used or the use

of other emerging tobacco products (e.g., electronic cigarettes, hookahs, dissolvable tobacco products). Information about frequency and intensity were not available, except for cigarette use, and information about trends in the use of emerging products are not available because some only recently have been introduced to the market. Fifth, in order to increase sample size, non-Hispanic Asians, American Indian/Alaska natives, and native Hawaiians and other Pacific islanders were collapsed together, making interpretations difficult for these groups individually. Finally, our estimates may differ from those derived from other surveillance systems that collect data on young people. These differences can be explained, in part, by differences in survey methods, modes, and topics and in the age and setting of the study population. However, the trends identified in our study are similar to those identified in other surveys of young people [2].

Our results suggest that the collection and detailed analysis of data on the use of multiple tobacco products and not just cigarettes is needed to guide policies and programs intended to prevent and control tobacco use. All tobacco use surveys should include questions on lifetime and current use of a range of tobacco products, including emerging products, and on frequency and intensity of use. Longitudinal surveys should examine trajectories of initiation, experimentation, and addiction and assess which tobacco products, alone or in any combination, may serve as gateways to the use of other tobacco products, as well as to the use of alcohol and other illegal substances and risk behaviors.

Acknowledgments

Funding Sources

There were no sources of funding, either direct or indirect, for this study.

References

1. U.S. Department of Health and Human Services. The health consequences of smoking: A report of the Surgeon General. Atlanta, GA: Centers for Disease Control and Prevention; 2004. Available at: http://www.cdc.gov/tobacco/data_statistics/sgr/2004/index.htm
2. U.S. Department of Health and Human Services. Preventing tobacco use among youth and young adults: A report of the Surgeon General. Atlanta, GA: Centers for Disease Control and Prevention; 2012. Available at: http://www.cdc.gov/tobacco/data_statistics/sgr/2012/index.htm
3. Centers for Disease Control and Prevention. Youth Risk Behavior Surveillance - United States, 2011. *Morb Mortal Wkly Rep.* 2012; 61(SS-4)
4. Centers for Disease Control and Prevention. Cigarette use among high school students—United States, 1991–2009. *Morb Mortal Wkly Rep.* 2010; 59:797–801.
5. Substance Abuse and Mental Health Services Administration. Results from the 2010 National Survey on Drug Use and Health: National findings. Rockville, MD: Office of Applied Studies; 2011. NSDUH Series: H-41. HHS publication no. SMA 11-4658. Available at: <http://www.oas.samhsa.gov/nsduh/2k10nsduh/2k10Results.pdf>
6. U.S. Department of Health and Human Services. How tobacco smoke causes disease: The biology and behavioral basis for smoking-attributable disease: A report of the Surgeon General. Atlanta, GA: Centers for Disease Control and Prevention; 2010. Available at: http://www.cdc.gov/tobacco/data_statistics/sgr/2010/index.htm
7. Fagerström K, Eissenberg T. Dependence on tobacco and nicotine products: A case for product-specific assessment. *Nicotine Tob Res.* 2012; 14:1382–90. [PubMed: 22459798]
8. Gilpin EA, Pierce JP. Concurrent use of tobacco products by California adolescents. *Preventive Medicine.* 2003; 36:575–84. [PubMed: 12689803]

9. Everett SA, Malarcher AM, Sharp DJ, et al. Relationship between cigarette, smokeless tobacco, and cigar use, and other health risk behaviors among U.S. high school students. *Journal of School Health*. 2000; 70:234–40. [PubMed: 10937370]
10. Bombard JM, Pederson LL, Koval JJ, O’Hegarty M. How are lifetime polytobacco users different than current cigarette-only users? Results from a Canadian young adult population. *Addictive Behaviors*. 2009; 34:1069–72. [PubMed: 19646820]
11. Bombard JM, Rock VJ, Pederson LL, Asman KJ. Monitoring polytobacco use among adolescents: Do cigarette smokers use other forms of tobacco? *Nicotine and Tobacco Research*. 2008; 10:1581–9. [PubMed: 18988070]
12. Timberlake DS. A latent class analysis of nicotine-dependence criteria and use of alternate tobacco. *Journal of Studies on Alcohol and Drugs*. 2008; 69:709–17. [PubMed: 18781246]
13. Nasim A, Blank MD, Cobb CO, Eissenberg T. Patterns of alternate tobacco use among adolescent cigarette smokers. *Drug and Alcohol Dependence*. 2012; 124:26–33. [PubMed: 22209307]
14. Family Smoking Prevention and Tobacco Control Act of 2009. Public Law 111–31. Jun 22. 2009 Available at: <http://www.gpo.gov/fdsys/pkg/PLAW-111publ31/content-detail.html>
15. Centers for Disease Control and Prevention. Current tobacco use among middle and high school students—United States, 2011. *Morb Mortal Wkly Rep*. 2012; 61:581–5.
16. Government Accountability Office. Tobacco taxes: Large disparities in rates for smoking products trigger significant market shifts to avoid higher taxes. Washington, DC: Government Accountability Office; 2012. Available at: <http://www.gao.gov/products/gao-12-475>
17. Morris DS. Tobacco manufacturing data demonstrate industry product switching in response to tax increases. *Tobacco Control*. 2010; 19:421–2. [PubMed: 20876077]
18. Morris DS, Tynan MA. Fiscal and policy implications of selling pipe tobacco for roll-your-own cigarettes in the United States. *PLoS ONE*. 7:e36487. <http://dx.doi.org/10.1371/journal.pone.0036487>. [PubMed: 22567159]
19. Centers for Disease Control and Prevention. Consumption of cigarettes and combustible tobacco—United States, 2000–2011. *Morb Mortal Wkly Rep*. 2012; 61:565–9.
20. U.S. Federal Trade Commission. Federal Trade Commission smokeless tobacco report for 2007 and 2008. Washington, DC: U.S. Federal Trade Commission; 2011. Available at: <http://www.ftc.gov/os/2011/07/110729smokelesstobaccoreport.pdf>
21. Delnevo CD, Hrywna M, Foulds J, Steinberg MB. Cigar use before and after a cigarette excise tax increase in New Jersey. *Addictive Behaviors*. 2004; 29:1799–807. [PubMed: 15530722]

IMPLICATIONS AND CONTRIBUTION

Recent declines in current tobacco use among U.S. high school students appear to be driven by those who smoke cigarettes. To achieve greater declines, policies and programs focused on cigarettes may consider expanding to all tobacco products. Monitoring of all tobacco use among youth provides information to prevent initiation.

Author Manuscript

Author Manuscript

Author Manuscript

Author Manuscript

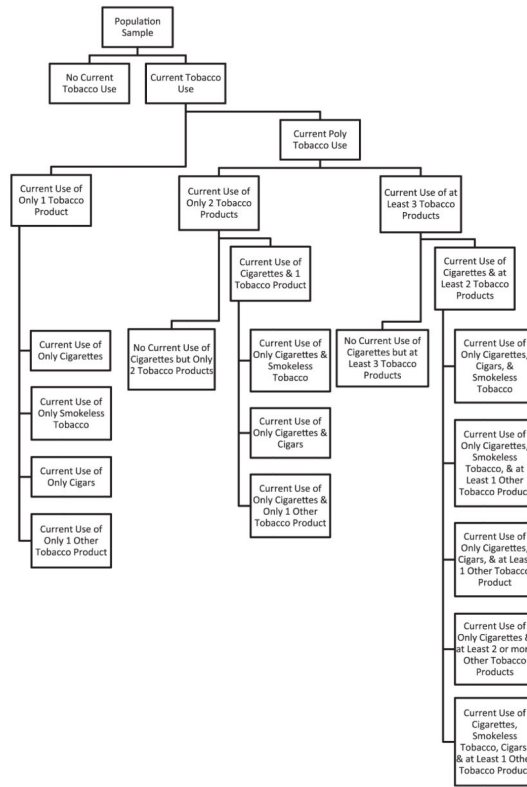


Figure 1. Flowchart for categories used to define current tobacco use among U.S. high school students, National Youth Tobacco Survey, 2000–2012.

Author Manuscript

Author Manuscript

Author Manuscript

Author Manuscript

Table 1
Current tobacco use among U.S. high school students, overall, National Youth Tobacco Survey, 2000–2012

Characteristics	Survey year								Trends
	2000 % (95% CI)	2002 % (95% CI)	2004 % (95% CI)	2006 % (95% CI)	2009 % (95% CI)	2011 % (95% CI)	2012 % (95% CI)		
Overall									
Sample size	18,219 out of 19,350	12,430 out of 13,460	12,318 out of 13,738	12,880 out of 14,489	11,446 out of 12,346	9,198 out of 9,720	12,129 out of 12,899		
Any current tobacco use	33.6 (31.6–35.6)	27.2 (25.5–29.0)	26.5 (24.2–29.0)	24.3 (22.4–26.3)	21.7 (18.8–24.9)	22.2 (20.0–24.5)	20.4 (18.6–22.2)	<i>a</i>	
Current use of only 1 tobacco product	18.8 (17.6–20.1)	16.6 (15.4–17.9)	15.5 (14.0–17.0)	13.5 (12.5–14.7)	12.4 (11.2–13.6)	12.3 (11.2–13.4)	10.5 (9.5–11.6)	<i>a</i>	
Current use of only cigarettes	14.0 (12.9–15.1)	12.3 (11.2–13.6)	11.3 (10.0–12.7)	9.3 (8.4–10.4)	8.1 (7.2–9.1)	6.3 (5.4–7.2)	4.7 (4.1–5.4)	<i>b</i>	
Current use of only smokeless tobacco	1.4 (1.1–1.7)	1.4 (1.0–1.9)	1.3 (1.0–1.8)	1.5 (1.1–2.0)	1.6 (1.1–2.4)	2.2 (1.6–2.9)	1.6 (1.2–2.2)		
Current use of only cigars	3.0 (2.6–3.4)	2.5 (2.1–2.9)	2.7 (2.3–3.1)	2.4 (2.0–2.9)	2.2 (1.8–2.8)	3.2 (2.7–3.9)	3.7 (3.1–4.3)		
Current use of only 1 other tobacco ^c product	.4 (.3–.6)	.4 (.3–.6)	.2 (.1–.3)	.3 (.2–.5)	.4 (.3–.7)	.6 (.4–.9)	.5 (.4–.6)		
Current poly tobacco use	14.7 (13.7–15.8)	10.6 (9.7–11.6)	11.1 (9.8–12.5)	10.8 (9.8–11.8)	9.3 (7.4–11.7)	9.9 (8.5–11.6)	9.9 (8.8–11.1)	<i>a</i>	
Current use of only 2 tobacco products	9.0 (8.4–9.7)	6.5 (5.9–7.1)	6.8 (5.9–7.8)	6.3 (5.7–7.0)	5.4 (4.3–6.9)	6.0 (5.1–7.1)	6.0 (5.3–6.8)	<i>a</i>	
Current use of cigarettes and 1 tobacco product	7.9 (7.3–8.6)	5.6 (5.0–6.2)	6.0 (5.2–6.9)	5.5 (4.9–6.2)	4.6 (3.7–5.8)	5.1 (4.2–6.1)	4.7 (4.0–5.4)	<i>a</i>	
Current use of only cigarettes and smokeless tobacco	1.2 (1.0–1.5)	1.2 (.8–1.6)	.9 (.6–1.3)	1.0 (.7–1.4)	1.3 (.9–1.9)	1.5 (1.0–2.1)	1.0 (.8–1.3)	<i>a</i>	
Current use of only cigarettes and cigars	4.9 (4.4–5.5)	3.4 (3.0–3.9)	4.6 (4.0–5.3)	3.5 (3.1–4.0)	2.9 (2.4–3.6)	3.2 (2.6–3.8)	3.1 (2.6–3.7)	<i>a</i>	
Current use of only cigarettes and only 1 other tobacco product	1.8 (1.6–2.0)	1.0 (.8–1.3)	.5 (.3–.8)	1.0 (.7–1.3)	.4 (.3–.7)	.4 (.3–.6)	.6 (.4–.7)		
No current use of cigarettes but only 2 tobacco products	1.1 (.9–1.3)	.9 (.7–1.2)	.8 (.6–1.1)	.8 (.6–1.0)	.8 (.5–1.3)	.9 (.7–1.2)	1.3 (1.1–1.6)		
Current use of at least 3 tobacco products	5.7 (5.2–6.3)	4.1 (3.6–4.7)	4.3 (3.7–5.0)	4.4 (3.9–5.0)	3.9 (3.0–5.0)	3.9 (3.2–4.8)	3.9 (3.2–4.7)		
Current use of cigarettes and at least 2 tobacco products	5.5 (5.0–6.0)	4.0 (3.5–4.6)	4.0 (3.5–4.7)	4.2 (3.7–4.8)	3.7 (2.9–4.7)	3.8 (3.2–4.7)	3.6 (3.0–4.4)		
Current use of only cigarettes, cigars, and smokeless tobacco	1.3 (1.0–1.6)	1.2 (.9–1.6)	.9 (.7–1.2)	1.1 (.9–1.4)	1.1 (.7–1.7)	1.2 (.8–1.7)	1.0 (.7–1.3)		

Characteristics	Survey year							Trends
	2000 % (95% CI)	2002 % (95% CI)	2004 % (95% CI)	2006 % (95% CI)	2009 % (95% CI)	2011 % (95% CI)	2012 % (95% CI)	
Current use of only cigarettes, smokeless tobacco, and at least 1 other tobacco product	.3 (.2-.4)	.1 (0.0-.2) ^d	.1 (1.1-.2) ^d	.1 (1.1-.3)	.2 (1.1-.4)	.2 (1.1-.3) ^d	.2 (1.1-.3)	
Current use of only cigarettes, cigars, and at least 1 other tobacco product	2.4 (2.1-2.8)	1.5 (1.3-1.8)	1.7 (1.4-2.0)	1.5 (1.2-1.9)	1.2 (9-1.5)	1.2 (9-1.6)	1.2 (1.0-1.5)	<i>a</i>
Current use of only cigarettes and at least 2 other tobacco products	.3 (.2-.4)	.1 (1.1-.2)	.1 (1.1-.2)	.2 (1.1-.4)	.1 (0.0-.2) ^d	.1 (0.0-.2) ^d	.1 (0.0-.1) ^d	
Current use of cigarettes, smokeless tobacco, cigars, and at least 1 other tobacco product	1.2 (1.0-1.4)	1.1 (.8-1.4)	1.2 (9-1.6)	1.2 (1.0-1.5)	1.1 (.8-1.5)	1.2 (9-1.6)	1.2 (9-1.5)	
No current use of cigarettes but at least 3 tobacco products	.3 (.2-.4)	.1 (1.1-.2)	.2 (2-.4)	.2 (1.1-.3)	.2 (1.1-.3)	.1 (1.1-.2) ^d	.2 (1.1-.4)	

CI = confidence interval.

^aLinear trend.

^bLinear and quadratic trend.

^cOther tobacco is defined as use of pipe, bidis, or kreteks on at least 1 day of the past 30 days.

^dData statistically unstable (denominator <50 and/or relative standard error >30%).

Author Manuscript

Author Manuscript

Author Manuscript

Author Manuscript

Table 2
Current tobacco use among U.S. high school students, by sex, National Youth Tobacco Survey, 2000–2012

Characteristics	Survey year								Trends
	2000 % (95% CI)	2002 % (95% CI)	2004 % (95% CI)	2006 % (95% CI)	2009 % (95% CI)	2011 % (95% CI)	2012 % (95% CI)		
Male									
Sample size	9,219 out of 9,973	6,095 out of 6,718	5,858 out of 6,694	6,155 out of 7,027	5,494 out of 6,049	4,489 out of 4,832	5,958 out of 6,458		
Any current tobacco use	37.5 (35.2–39.8)	31.2 (28.8–33.6)	29.3 (24.2–29.0)	28.2 (26.0–30.5)	26.8 (22.6–31.4)	27.0 (24.2–30.1)	25.3 (23.1–27.6)		<i>a</i>
Current use of only 1 tobacco product	16.8 (15.8–17.9)	15.6 (14.1–17.2)	13.9 (12.5–15.4)	13.4 (12.2–14.8)	13.4 (11.9–15.1)	13.2 (11.8–14.7)	11.5 (10.2–12.9)		<i>a</i>
Current use of only cigarettes	9.4 (8.6–10.3)	9.3 (8.1–10.7)	7.2 (6.2–8.3)	7.0 (6.1–8.0)	7.4 (6.6–8.2)	4.7 (3.9–5.6)	3.8 (3.2–4.4)		<i>a</i>
Current use of only smokeless tobacco	2.5 (2.0–3.1)	2.5 (1.8–3.6)	2.6 (1.9–3.5)	2.9 (2.1–4.0)	3.0 (2.0–4.5)	3.9 (2.9–5.3)	3.1 (2.3–4.3)		
Current use of only cigars	4.5 (3.9–5.1)	3.4 (2.8–4.1)	3.9 (3.4–4.5)	3.3 (2.7–4.0)	3.5 (2.7–4.5)	4.2 (3.3–5.3)	4.2 (3.5–5.0)		
Current use of only 1 other tobacco ^c product	.4 (–3–6)	.3 (–2–6)	.2 (–1–3) ^d	.3 (–1–5) ^d	1.1 (–6–1.9)	.4 (–2–7)	.4 (–3–6)		
Current poly tobacco use	20.7 (19.1–22.4)	15.6 (14.0–17.4)	15.4 (13.6–17.3)	14.8 (13.3–16.3)	13.3 (10.5–16.9)	13.8 (11.9–16)	13.8 (12.3–15.6)		<i>a</i>
Current use of only 2 tobacco products	11.8 (10.7–13.0)	8.8 (7.9–9.9)	8.9 (7.8–10.2)	8.0 (7.0–9.2)	7.4 (5.7–9.6)	7.7 (6.5–9.0)	7.7 (6.7–8.8)		<i>a</i>
Current use of cigarettes and 1 tobacco product	9.9 (8.9–11.0)	7.3 (6.4–8.3)	7.5 (6.5–8.7)	6.7 (5.8–7.8)	6.0 (4.6–7.6)	6.1 (5.0–7.3)	5.5 (4.7–6.5)		<i>a</i>
Current use of only cigarettes and smokeless tobacco	2.1 (1.6–2.6)	2.1 (1.5–2.9)	1.5 (1.0–2.2)	1.8 (1.3–2.4)	2.2 (1.5–3.2)	2.6 (1.8–3.7)	1.6 (1.2–2.1)		
Current use of only cigarettes and cigars	6.5 (5.8–7.3)	4.3 (3.6–5.0)	5.7 (5.0–6.5)	4.2 (3.6–4.8)	3.6 (2.9–4.4)	3.2 (2.6–3.9)	3.5 (2.9–4.2)		<i>a</i>
Current use of only cigarettes and only 1 other tobacco product	1.3 (1.1–1.6)	.9 (–1–1.3)	.3 (–2–6) ^d	.8 (–5–1.3)	.4 (–2–7) ^d	.3 (–2–5)	.4 (–3–6)		
No current use of cigarettes but only 2 tobacco products	1.9 (1.6–2.3)	1.5 (1.2–2.0)	1.4 (1.0–2.0)	1.3 (1.0–1.7)	1.5 (–9–2.3)	1.6 (1.2–2.1)	2.2 (1.7–2.7)		
Current use of at least 3 tobacco products	8.9 (7.9–9.9)	6.8 (5.8–7.9)	6.5 (5.5–7.6)	6.7 (5.8–7.7)	5.9 (4.5–7.7)	6.2 (5.1–7.5)	6.1 (5.1–7.4)		
Current use of cigarettes and at least 2 tobacco products	8.4 (7.5–9.4)	6.5 (5.6–7.7)	6.0 (5.1–7.1)	6.4 (5.5–7.4)	5.6 (4.3–7.3)	6.0 (5.0–7.3)	5.8 (4.8–6.9)		
Current use of only cigarettes, cigars, and smokeless tobacco	2.3 (1.9–2.9)	2.4 (1.8–3.1)	1.5 (1.2–2.0)	2.0 (1.6–2.6)	2.0 (1.3–3.1)	2.2 (1.6–3.0)	1.8 (1.4–2.5)		

Characteristics	Survey year							Trends
	2000 % (95% CI)	2002 % (95% CI)	2004 % (95% CI)	2006 % (95% CI)	2009 % (95% CI)	2011 % (95% CI)	2012 % (95% CI)	
Current use of only cigarettes, smokeless tobacco, and at least 1 other tobacco product	.5 (.3-.7)	.1 (0.0-.2) ^d	.2 (.1-.4) ^d	.2 (.1-.3) ^d	.3 (.2-.7) ^d	.3 (.1-.6) ^d	.2 (.1-.4) ^d	
Current use of only cigarettes, cigars, and at least 1 other tobacco product	3.1 (2.7-3.7)	2.2 (1.8-2.7)	2.0 (1.6-2.5)	1.8 (1.4-2.2)	1.5 (1.2-1.9)	1.6 (1.2-2.2)	1.6 (1.3-2.1)	<i>a</i>
Current use of only cigarettes and at least 2 other tobacco products	.3 (.2-.5)	.1 (0.0-.2) ^d	.1 (0.0-.2) ^d	.1 (.1-.3) ^d	.2 (.1-.4) ^d	.1 (0.0-.2) ^d	.1 (0.0-.2) ^d	
Current use of cigarettes, smokeless tobacco, cigars, and at least 1 other tobacco product	2.1 (1.8-2.6)	1.8 (1.4-2.5)	2.2 (1.6-3.1)	2.3 (1.7-2.9)	2.0 (1.4-2.7)	2.4 (1.8-3.2)	2.0 (1.6-2.6)	
No current use of cigarettes but at least 3 tobacco products	.5 (.3-.7)	.2 (.1-.4)	.5 (.3-.7)	.4 (.2-.6)	.3 (.2-.5)	.2 (.1-.4) ^d	.4 (.2-.7) ^d	
Female								
Sample size	8,996 out of 9,371	6,318 out of 6,719	6,395 out of 6,964	6,638 out of 7,359	5,936 out of 6,273	4,651 out of 4,819	6,170 out of 6,439	
Any current tobacco use	29.6 (27.6-31.6)	23.3 (21.5-25.2)	24.0 (21.5-26.6)	20.8 (18.7-23.0)	16.8 (14.6-19.1)	17.3 (15.4-19.5)	15.4 (13.6-17.4)	<i>a</i>
Current use of only 1 tobacco product	20.8 (19.2-22.6)	17.6 (15.9-19.3)	16.9 (15.0-18.9)	13.7 (12.2-15.3)	11.4 (9.8-13.2)	11.3 (10.0-12.8)	9.5 (8.4-10.9)	<i>a</i>
Current use of only cigarettes	18.6 (17.0-20.3)	15.3 (13.6-17.2)	15.0 (13.2-17.0)	11.5 (10.2-13.1)	9.4 (8.0-10.9)	7.8 (6.5-9.3)	5.7 (4.9-6.6)	<i>a</i>
Current use of only smokeless tobacco	.3 (.2-.5)	.3 (.2-.5)	.1 (.1-.3) ^d	.2 (.1-.4) ^d	.3 (.2-.7) ^d	.5 (.3-.8)	.1 (.1-.3) ^d	
Current use of only cigars	1.4 (1.1-1.8)	1.5 (1.2-1.9)	1.5 (1.2-2)	1.6 (1.2-2.1)	1.3 (.9-1.9)	2.2 (1.7-3)	3.2 (2.6-3.9)	
Current use of only 1 other tobacco product	.5 (.3-.7)	.4 (.3-.7)	.2 (.1-.4)	.4 (.2-.5)	.4 (.2-.7) ^d	.8 (.5-1.5)	.6 (.4-.8)	
Current poly tobacco use	8.7 (7.9-9.7)	5.7 (5.0-6.6)	7.1 (5.9-8.4)	7.1 (6.1-8.2)	5.3 (4.3-6.7)	6.0 (4.9-7.5)	5.9 (5.0-6.9)	
Current use of only 2 tobacco products	6.2 (5.5-6.9)	4.2 (3.6-4.9)	4.9 (4.0-6.0)	4.7 (4.0-5.6)	3.4 (2.7-4.4)	4.4 (3.4-5.5)	4.3 (3.5-5.1)	
Current use of cigarettes and 1 tobacco product	5.9 (5.3-6.6)	3.9 (3.3-4.6)	4.6 (3.8-5.6)	4.4 (3.7-5.3)	3.3 (2.5-4.2)	4.1 (3.2-5.3)	3.8 (3.1-4.6)	
Current use of only cigarettes and smokeless tobacco	.4 (.2-.6)	.2 (.1-.5) ^d	.3 (.1-.7) ^d	.4 (.1-.9) ^d	.2 (.1-.6) ^d	.3 (.2-.6) ^d	.4 (.2-.6)	
Current use of only cigarettes and cigars	3.3 (2.8-3.9)	2.6 (2.1-3.3)	3.6 (2.9-4.5)	2.9 (2.4-3.7)	2.4 (1.9-3.0)	3.2 (2.5-4.3)	2.7 (2.1-3.4)	
Current use of only cigarettes and only 1 other tobacco product	2.2 (1.9-2.6)	1.1 (.8-1.5)	.7 (.4-1.2)	1.1 (.8-1.7)	.6 (.4-1.0)	.6 (.3-.9)	.7 (.5-1.0)	<i>a</i>

Characteristics	Survey year									
	2000 % (95% CI)	2002 % (95% CI)	2004 % (95% CI)	2006 % (95% CI)	2009 % (95% CI)	2011 % (95% CI)	2012 % (95% CI)	Trends		
No current use of cigarettes but only 2 tobacco products	.3 (.2-.4)	.3 (.2-.5)	.3 (.2-.5)	.3 (.2-.5)	.2 (.1-3)	.3 (.2-.5)	.5 (.3-.7)			
Current use of at least 3 tobacco products	2.6 (2.1-3.1)	1.5 (1.2-2.0)	2.2 (1.7-2.9)	2.4 (1.9-2.9)	1.9 (1.4-2.6)	1.7 (1.2-2.3)	1.6 (1.2-2.1)			
Current use of cigarettes and at least 2 tobacco products	2.5 (2.1-3.1)	1.5 (1.1-2.0)	2.1 (1.6-2.8)	2.3 (1.9-2.8)	1.8 (1.3-2.4)	1.6 (1.2-2.2)	1.5 (1.2-2.0)			
Current use of only cigarettes, cigars, and smokeless tobacco	.2 (.1-.5) ^d	.2 (.1-.3) ^d	.3 (.2-.6) ^d	.2 (.1-.5) ^d	.2 (.1-5) ^d	.3 (.1-8) ^d	.1 (.1-.2) ^d			
Current use of only cigarettes, smokeless tobacco, and at least 1 other	.1 (0.0-.2) ^d	.1 (0.0-.2) ^d	.1 (0.0-.2) ^d	.1 (.1-.3) ^d	.2 (0.0-.7) ^d	.1 (0.0-.3) ^d	.1 (.1-.3) ^d			
Current use of only cigarettes, cigars, and at least 1 other tobacco product	1.7 (1.3-2.1)	.9 (.6-1.2)	1.3 (1-1.8)	1.3 (.9-1.9)	1.0 (.7-1.4)	1 (.7-1.4)	.9 (.7-1.1)			
Current use of only cigarettes and at least 2 other tobacco products	.3 (.2-.5)	.1 (0.0-.2) ^d	.2 (.1-.4)	.3 (.2-.5)	.1 (0.0-.1) ^d	.2 (.1-.4) ^d	0.0 (0.0-.1) ^d			
Current use of cigarettes, smokeless tobacco, cigars, and at least 1 other tobacco product	.2 (.1-.3)	.3 (.2-.5)	.2 (.1-.4) ^d	.3 (.2-.4)	.4 (.2-8) ^d	.2 (.1-5) ^d	.4 (.2-6)			
No current use of cigarettes but at least 3 tobacco products	0.0 (0.0-.1) ^d	0.0 (0.0-.1) ^d	0.0 (0.0-.1) ^d	.1 (0.0-.2) ^d	.1 (0.0-.3) ^d	.1 (0.0-.2) ^d	.1 (0.0-.2) ^d			

CI = confidence interval.

^a Linear trend.

^b Linear and quadratic trend.

^c Other Tobacco is defined as use of pipe, bidis, or kreteks on at least 1 day of the past 30 days.

^d Data statistically unstable (denominator <50 and/or relative standard error >30%).

Table 3
Current tobacco use among U.S. high school students, by race/ethnicity, National Youth Tobacco Survey, 2000–2012

Characteristics	Survey year								Trends
	2000 % (95% CI)	2002 % (95% CI)	2004 % (95% CI)	2006 % (95% CI)	2009 % (95% CI)	2011 % (95% CI)	2012 % (95% CI)		
non-Hispanic whites									
Sample size	10,999 out of 11,512	7,050 out of 7,466	5,819 out of 6,065	6,385 out of 6,851	5,945 out of 6,206	4,097 out of 4,230	6,462 out of 6,802		
Any current tobacco use	37.1 (34.8–39.4)	30.1 (28.0–32.2)	29.9 (26.8–33.2)	27.3 (25.0–29.8)	25.3 (22.2–28.7)	24.8 (21.9–27.9)	21.9 (19.6–24.2)	<i>a</i>	
Current use of only 1 tobacco product	20.5 (19.1–22.0)	18.1 (16.7–19.6)	17.5 (15.5–19.7)	15.0 (13.5–16.5)	14.2 (12.8–15.7)	13.3 (11.8–14.8)	10.7 (9.5–12.0)	<i>a</i>	
Current use of only cigarettes	16.0 (14.8–17.4)	13.8 (12.6–15.2)	13.0 (11.3–15.0)	10.5 (9.3–11.8)	9.1 (8.1–10.2)	6.8 (5.6–8.2)	5.4 (4.6–6.3)	<i>b</i>	
Current use of only smokeless tobacco	1.8 (1.4–2.2)	1.8 (1.3–2.5)	1.7 (1.3–2.3)	1.9 (1.4–2.6)	2.3 (1.6–3.2)	2.9 (2.2–3.9)	2.2 (1.6–3.1)		
Current use of only cigars	2.5 (2.1–2.9)	2.1 (1.8–2.6)	2.6 (2.2–3.1)	2.3 (1.9–2.9)	2.5 (2.0–3.2)	3.1 (2.4–4.0)	2.8 (2.2–3.5)		
Current use of only 1 other tobacco ^a product	.3 (.2–.4)	.3 (.2–.5)	.1 (.1–.3) ^d	.3 (.2–.5)	.2 (.1–.4) ^d	.4 (.2–.9) ^d	.3 (.2–.5)		
Current poly tobacco use	16.5 (15.3–17.9)	12.0 (10.8–13.2)	12.4 (10.8–14.2)	12.4 (11.1–13.7)	11.1 (9.1–13.5)	11.5 (9.6–13.8)	11.1 (9.6–12.8)		
Current use of only 2 tobacco products	10.0 (9.1–10.9)	7.2 (6.4–8.1)	7.5 (6.5–8.8)	7.1 (6.3–8.0)	6.6 (5.4–8.0)	7.2 (5.9–8.7)	6.7 (5.7–7.9)		
Current use of cigarettes and 1 tobacco product	8.8 (8.0–9.7)	6.2 (5.5–7.0)	6.7 (5.6–7.9)	6.2 (5.4–7.1)	5.5 (4.5–6.6)	6.1 (4.9–7.5)	5.1 (4.2–6.3)	<i>a</i>	
Current use of only cigarettes and smokeless tobacco	1.6 (1.3–2.1)	1.5 (1.1–2.0)	1.2 (.8–1.8)	1.3 (.9–1.9)	1.7 (1.3–2.4)	2.1 (1.5–2.9)	1.4 (1.1–1.8)		
Current use of only cigarettes and cigars	5.2 (4.5–5.9)	3.6 (3.0–4.2)	4.9 (4.2–5.8)	3.8 (3.2–4.5)	3.2 (2.7–3.8)	3.5 (2.8–4.5)	3.0 (2.4–3.8)	<i>a</i>	
Current use of only cigarettes and only 1 other tobacco product	2.0 (1.7–2.3)	1.2 (.9–1.6)	.6 (.3–1.0) ^d	1.1 (.7–1.6)	.6 (.3–.9)	.5 (.3–.8)	.7 (.5–1.0)		
No current use of cigarettes but only 2 tobacco products	1.2 (.9–1.4)	1.0 (.7–1.4)	.9 (.6–1.3)	.9 (.7–1.2)	1.1 (.7–1.7)	1.1 (.8–1.5)	1.6 (1.2–2.1)		
Current use of at least 3 tobacco products	6.6 (5.9–7.3)	4.8 (4.1–5.5)	4.9 (4.1–5.7)	5.2 (4.6–6.0)	4.5 (3.4–5.9)	4.4 (3.4–5.6)	4.4 (3.6–5.5)		
Current use of cigarettes and at least 2 tobacco products	6.3 (5.7–7.0)	4.7 (4.0–5.4)	4.6 (3.8–5.5)	5.0 (4.4–5.7)	4.2 (3.2–5.5)	4.2 (3.3–5.5)	4.2 (3.3–5.2)		
Current use of only cigarettes, cigars, and smokeless tobacco	1.7 (1.4–2.1)	1.7 (1.3–2.3)	1.2 (.9–1.5)	1.4 (1.1–1.9)	1.4 (1.0–2.2)	1.6 (1.1–2.4)	1.3 (.9–1.8)		

Author Manuscript

Author Manuscript

Author Manuscript

Author Manuscript

Characteristics	Survey year							Trends
	2000 % (95% CI)	2002 % (95% CI)	2004 % (95% CI)	2006 % (95% CI)	2009 % (95% CI)	2011 % (95% CI)	2012 % (95% CI)	
Current use of only cigarettes, smokeless tobacco, and at least 1 other	.4 (.3-.5)	.1 (1-.3) ^d	.1 (1-.3) ^d	.2 (1-.3) ^d	.2 (1-.4) ^d	.2 (1-.4) ^d	.2 (1-.3) ^d	
Current use of only cigarettes, cigars, and at least 1 other tobacco product	2.6 (2.2-3.1)	1.7 (1.4-2.0)	1.8 (1.4-2.3)	1.7 (1.3-2.2)	1.4 (1.0-1.8)	1.1 (.8-1.6)	1.4 (1.1-1.8)	<i>a</i>
Current use of only cigarettes and at least 2 other tobacco products	.4 (.3-.5)	.1 (0.0-.2) ^d	.2 (1-.3) ^d	.3 (1-5)	.1 (0.0-.2) ^d	.1 (1-.3) ^d	0.0 (0.0-.1) ^d	
Current use of cigarettes, smokeless tobacco, cigars, and at least 1 other tobacco product	1.3 (1.0-1.5)	1.1 (.8-1.5)	1.4 (1.0-1.9)	1.4 (1.1-1.9)	1.1 (.8-1.6)	1.2 (.8-1.8)	1.2 (.9-1.6)	
No current use of cigarettes but at least 3 tobacco products	.3 (.2-.4)	.1 (0.0-.3) ^d	.3 (2-.4)	.2 (1-4)	.3 (2-5)	.1 (0.0-.3) ^d	.3 (2-.5) ^d	
non-Hispanic blacks								
Sample size	2,475 out of 2,721	2,005 out of 2,185	2,315 out of 2,556	2,643 out of 2,901	1,668 out of 1,850	1,512 out of 1,617	1,737 out of 1,855	
Any current tobacco use	25.4 (22.1-29.0)	20.2 (17.4-23.3)	15.5 (13.0-18.5)	13.4 (11.4-15.6)	10.3 (6.9-15.1)	16.7 (13.5-20.5)	19.8 (17.2-22.7)	<i>b</i>
Current use of only 1 tobacco product	15.8 (13.9-17.8)	13.9 (11.6-16.6)	9.7 (8.0-11.6)	8.8 (7.3-10.6)	6.9 (5.2-9.1)	11.2 (9.1-13.8)	13.2 (11.2-15.6)	<i>b</i>
Current use of only cigarettes	8.0 (6.7-9.6)	7.8 (5.9-10.4)	5.2 (4.1-6.7)	4.7 (3.8-5.8)	3.5 (2.1-5.7)	4.8 (3.2-7.2)	2.7 (1.9-3.8)	<i>a</i>
Current use of only smokeless tobacco	.5 (2-1.2) ^d	.3 (1-.7) ^d	.2 (1-6) ^d	.2 (1-7) ^d	.2 (1-7) ^d	.9 (3-2.4) ^d	.6 (3-1.3) ^d	
Current use of only cigars	6.4 (5.2-7.9)	5.0 (3.7-6.8)	4.0 (3.0-5.3)	3.4 (2.4-4.8)	2.2 (1.0-4.8) ^d	5.1 (3.8-6.7)	9.6 (7.9-11.6)	
Current use of only 1 other tobacco product	.8 (.5-1.3)	.8 (4-1.5) ^d	.2 (1-6) ^d	.5 (3-1.0) ^d	1.0 (3-3.6) ^d	.4 (1-1.3) ^d	.3 (1-8) ^d	
Current poly tobacco use	9.7 (7.9-11.8)	6.3 (5.1-7.6)	5.8 (4.5-7.5)	4.6 (3.4-6.0)	3.4 (1.6-7.2) ^d	5.5 (3.9-7.7)	6.6 (5.4-8.1)	
Current use of only 2 tobacco products	6.8 (5.4-8.4)	4.3 (3.4-5.5)	4.4 (3.3-5.8)	3.3 (2.5-4.4)	2.3 (1.1-4.9) ^d	3.6 (2.5-5.3)	5.0 (4.0-6.3)	
Current use of cigarettes and 1 tobacco product	5.7 (4.4-7.4)	3.5 (2.7-4.7)	3.8 (2.8-5.1)	3.0 (2.2-4.1)	2.0 (.9-4.3) ^d	3.3 (2.2-4.9)	4.3 (3.3-5.8)	
Current use of only cigarettes and smokeless tobacco	.2 (1-.5) ^d	.1 (0.0-.5) ^d	.1 (0.0-.4) ^d	.1 (0.0-.4) ^d	.3 (0.0-1.4) ^d	.3 (0.0-1.9) ^d	.2 (1-7) ^d	
Current use of only cigarettes and cigars	4.5 (3.3-6.1)	2.6 (1.9-3.6)	3.6 (2.6-4.9)	2.3 (1.7-3.1)	1.6 (.7-3.3) ^d	2.8 (2.0-4.0)	4.0 (2.9-5.5)	
Current use of only cigarettes and only 1 other tobacco product	.9 (6-1.6)	.8 (3-1.6) ^d	.2 (1-5) ^d	.6 (3-1.1) ^d	.1 (0.0-.5) ^d	.2 (0.0-.7) ^d	.1 (0.0-.4) ^d	

Author Manuscript

Author Manuscript

Author Manuscript

Author Manuscript

Characteristics	Survey year							Trends
	2000 % (95% CI)	2002 % (95% CI)	2004 % (95% CI)	2006 % (95% CI)	2009 % (95% CI)	2011 % (95% CI)	2012 % (95% CI)	
No current use of cigarettes but only 2 tobacco products	1.1 (1.7-1.6)	.8 (.5-1.4)	.6 (.3-1.1)	.3 (.2-.6) ^d	.3 (.1-.9) ^d	4 (1.1-1.3) ^d	.7 (.3-1.4) ^d	
Current use of at least 3 tobacco products	2.9 (2.2-3.9)	1.9 (1.3-2.9)	1.4 (.9-2.2)	1.3 (.8-2.0)	1.1 (.4-2.9) ^d	1.8 (1.1-3.0)	1.5 (1.0-2.5)	
Current use of cigarettes and at least 2 tobacco products	2.7 (2.0-3.6)	1.7 (1.1-2.6)	1.3 (.8-2.1)	1.2 (.8-1.9)	1.0 (.4-2.8) ^d	1.8 (1.1-3.0)	1.4 (.8-2.3)	
Current use of only cigarettes, cigars, and smokeless tobacco	.2 (.1-.7) ^d	0.0 (0.0-.3) ^d	.1 (0.0-.7) ^d	.1 (0.0-.4) ^d	.2 (.1-.6) ^d	.6 (.2-1.4) ^d	.1 (0.0-.2) ^d	
Current use of only cigarettes, smokeless tobacco, and at least 1 other	.1 (0.0-.3) ^d	0.0 (0.0-.1) ^d	0.0 (0.0-.3) ^d	.1 (0.0-.5) ^d	.1 (0.0-.3) ^d	0.0 (-) ^d	.2 (0.0-1.3) ^d	
Current use of only cigarettes, cigars, and at least 1 other tobacco product	1.5 (1.0-2.2)	.6 (.4-1.1)	.5 (.3-.9) ^d	.6 (.4-1.0)	.2 (0.0-.5) ^d	.6 (.3-1.4) ^d	.5 (.2-1.1) ^d	
Current use of only cigarettes and at least 2 other tobacco products	.2 (.1-.5) ^d	.2 (0.0-.7) ^d	.1 (0.0-.4) ^d	.1 (0.0-.3) ^d	0.0 (0.0-.2) ^d	0.0 (-) ^d	.1 (0.0-.6) ^d	
Current use of cigarettes, smokeless tobacco, cigars, and at least 1 other tobacco product	.6 (.3-1.3) ^d	.8 (.4-1.7) ^d	.5 (.2-1.3) ^d	.2 (.1-.6) ^d	.6 (.1-2.4) ^d	.6 (.3-1.6) ^d	.5 (.2-1.1) ^d	
No current use of cigarettes but at least 3 tobacco products	.2 (.1-.7) ^d	.2 (.1-.7) ^d	.1 (0.0-.3) ^d	.1 (0.0-.3) ^d	.1 (0.0-.3) ^d	0.0 (-) ^d	.2 (.1-.6) ^d	
Hispanics								
Sample size	3,090 out of 3,317	2,302 out of 2,595	3,129 out of 3,610	2,774 out of 3,471	3,073 out of 3,403	2,990 out of 3,217	2,873 out of 3,098	
Any current tobacco use	25.5 (22.4-28.9)	21.3 (18.6-24.3)	23.6 (21.1-26.3)	22.9 (20.5-25.5)	21.3 (19.1-23.6)	20.5 (17.9-23.3)	18.5 (15.9-21.3)	
Current use of only 1 tobacco product	13.7 (11.7-16.0)	12.3 (10.3-14.6)	13.2 (11.5-15.0)	12.8 (11.3-14.3)	12.2 (10.7-13.9)	11.4 (9.9-13.1)	8.7 (7.4-10.3)	
Current use of only cigarettes	9.8 (8.0-12.0)	9.6 (7.8-11.9)	9.9 (8.5-11.5)	9.1 (8.0-10.4)	9.2 (7.4-11.4)	6.6 (5.7-7.6)	4.1 (3.2-5.4)	<i>b</i>
Current use of only smokeless tobacco	.8 (.5-1.2)	.9 (.5-1.6)	.5 (.2-1.1) ^d	1.1 (.6-2.0) ^d	.5 (.2-1.0) ^d	1.1 (.6-2.0) ^d	.9 (.5-1.6)	
Current use of only cigars	2.2 (1.7-2.9)	1.3 (.9-2.0)	2.3 (1.7-3.1)	2.2 (1.6-2.9)	1.7 (1.0-2.7)	2.5 (1.8-3.5)	2.6 (1.9-3.6)	
Current use of only 1 other tobacco product	.9 (.6-1.5)	.4 (.2-.9) ^d	.4 (.2-.8) ^d	.4 (.2-.7)	.8 (.4-1.6) ^d	1.3 (.8-2.0)	1.0 (.7-1.5)	
Current poly tobacco use	11.8 (10.3-13.5)	9.0 (7.5-10.7)	10.4 (8.9-12.1)	10.2 (8.7-11.9)	9.1 (7.4-11.0)	9.1 (7.7-10.7)	9.7 (8.1-11.6)	
Current use of only 2 tobacco products	7.6 (6.6-8.8)	5.5 (4.5-6.7)	5.9 (4.8-7.2)	6.0 (4.9-7.3)	4.8 (3.5-6.5)	4.6 (3.7-5.8)	5.6 (4.5-6.9)	

Author Manuscript

Author Manuscript

Author Manuscript

Author Manuscript

Characteristics	Survey year								Trends
	2000 % (95% CI)	2002 % (95% CI)	2004 % (95% CI)	2006 % (95% CI)	2009 % (95% CI)	2011 % (95% CI)	2012 % (95% CI)		
Current use of cigarettes and 1 tobacco product	6.7 (5.7–7.9)	5.1 (4.2–6.2)	5.4 (4.3–6.7)	5.3 (4.3–6.6)	4.4 (3.2–6.0)	3.7 (3.0–4.7)	4.4 (3.4–5.5)		
Current use of only cigarettes and smokeless tobacco	.4 (2–.9) ^d	.3 (1–.9) ^d	.2 (1–.6) ^d	.5 (2–1.0) ^d	.7 (3–2.0) ^d	.5 (2–1.2) ^d	.4 (2–.9) ^d		
Current use of only cigarettes and cigars	4.8 (3.9–5.8)	4.1 (3.3–5.1)	4.4 (3.4–5.6)	4.0 (3.2–5.1)	3.5 (2.4–4.9)	2.9 (2.2–3.8)	3.5 (2.7–4.4)		
Current use of only cigarettes and only 1 other tobacco product	1.5 (1.2–2.1)	.7 (4–1.1)	.8 (6–1.2)	.8 (4–1.5) ^d	.2 (1–.5) ^d	.4 (2–.7) ^d	.5 (3–.9) ^d		
No current use of cigarettes but only 2 tobacco products	.9 (6–1.5)	.4 (2–.8) ^d	.5 (3–.9)	.7 (4–1.2)	.4 (2–.7) ^d	.9 (6–1.3)	1.2 (8–1.9)		
Current use of at least 3 tobacco products	4.2 (3.3–5.3)	3.5 (2.6–4.6)	4.5 (3.8–5.4)	4.2 (3.3–5.2)	4.3 (3.4–5.4)	4.4 (3.5–5.6)	4.2 (3.3–5.2)		
Current use of cigarettes and at least 2 tobacco products	3.9 (3–5.1)	3.2 (2.4–4.3)	4.2 (3.5–5.0)	3.8 (3.1–4.8)	4.2 (3.3–5.3)	4.2 (3.4–5.3)	4.0 (3.2–5.1)		
Current use of only cigarettes, cigars, and smokeless tobacco	.5 (2–1.0) ^d	.2 (1–.6) ^d	.3 (1–.7) ^d	.3 (1–.8) ^d	.5 (2–1.2) ^d	.4 (2–.8) ^d	.6 (4–1.1)		
Current use of only cigarettes, smokeless tobacco, and at least 1 other tobacco product	.1 (0.0–.6) ^d	0.0 (–.–) ^d	.1 (0.0–.5) ^d	0.0 (0.0–.3) ^d	.5 (2–1.8) ^d	.1 (0.0–.3) ^d	.2 (1–.4) ^d		
Current use of only cigarettes, cigars, and at least 1 other tobacco product	2.3 (1.7–3.1)	2.0 (1.4–2.8)	2.6 (2.0–3.4)	1.6 (1.1–2.2)	1.4 (1.1–2.0)	2.1 (1.5–2.9)	1.4 (1.0–2.1)		
Current use of only cigarettes and at least 2 other tobacco products	.2 (1–.4) ^d	.1 (0.0–.3) ^d	.2 (1–.5) ^d	.3 (1–.6) ^d	.1 (0.0–.5) ^d	.1 (0.0–.2) ^d	.1 (0.0–.3) ^d		
Current use of cigarettes, smokeless tobacco, cigars, and at least 1 other tobacco product	.8 (5–1.3)	.9 (5–1.7) ^d	1.0 (7–1.4)	1.6 (1.1–2.4)	1.5 (1.1–2.3)	1.6 (1.0–2.4)	1.7 (1.1–2.6)		
No current use of cigarettes but at least 3 tobacco products	.3 (2–.5) ^d	.2 (1–.6) ^d	.3 (2–.7) ^d	.3 (1–.9) ^d	.1 (1–.3) ^d	.2 (1–.5) ^d	.1 (0.0–.3) ^d		
non-Hispanic others (Asians, American Indians/Alaska Natives, or Native Hawaiian/Other Pacific Islanders)									
Sample size	1,438 out of 1,549	906 out of 1,015	876 out of 934	861 out of 1,007	629 out of 677	474 out of 508	858 out of 909		
Any current tobacco use	25.6 (22.4–29.0)	22.1 (17.5–27.5)	15.6 (12.6–19.1)	14.7 (11.6–18.6)	13.2 (9.2–18.5)	12.6 (9.3–16.9)	11.2 (8.0–15.6)	<i>a</i>	
Current use of only 1 tobacco product	14.0 (11.8–16.6)	13.3 (9.3–18.8)	8.1 (6.1–10.6)	9.4 (7.2–12.1)	7.1 (5.0–9.9)	6.2 (4.0–9.6)	6.7 (4.5–10.0)	<i>a</i>	

Author Manuscript

Author Manuscript

Author Manuscript

Author Manuscript

Characteristics	Survey year							Trends
	2000 % (95% CI)	2002 % (95% CI)	2004 % (95% CI)	2006 % (95% CI)	2009 % (95% CI)	2011 % (95% CI)	2012 % (95% CI)	
Current use of only cigarettes	12.0 (10.0–14.3)	10.4 (6.8–15.5)	6.2 (4.6–8.4)	7.8 (5.8–10.4)	5.9 (4.0–8.5)	2.9 (1.6–5.4) ^d	3.8 (2.1–6.8)	
Current use of only smokeless tobacco	.6 (.3–1.5) ^d	.8 (.3–2.1) ^d	.4 (1–1.3) ^d	.5 (1–1.5) ^d	.4 (0.0–2.6) ^d	1.0 (.3–2.9) ^d	.6 (.3–1.3) ^d	
Current use of only cigars	.6 (.3–1.1) ^d	1.7 (.9–3.1) ^d	1.0 (.4–2.7) ^d	1.0 (.5–1.9) ^d	.7 (.3–1.6) ^d	1.4 (.5–4.1) ^d	1.9 (1.2–3.2)	
Current use of only 1 other tobacco product	.8 (.4–1.4) ^d	.4 (.2–1.1) ^d	.5 (1–1.6) ^d	.2 (0.0–.6) ^d	.2 (0.0–.7) ^d	.9 (.2–4.2) ^d	.4 (.1–1.3) ^d	
Current poly tobacco use	11.5 (9.3–14.3)	8.8 (6.4–11.9)	7.5 (5.6–10.0)	5.3 (3.7–7.6)	6.1 (3.8–9.6)	6.4 (4.2–9.7)	4.5 (2.9–6.8)	<i>a</i>
Current use of only 2 tobacco products	6.0 (4.5–7.8)	5.0 (3.1–8.0)	4.3 (2.9–6.4)	3.4 (2.1–5.4)	2.6 (1.5–4.6)	4.1 (2.3–7.0)	2.4 (1.5–3.5)	<i>a</i>
Current use of cigarettes and 1 tobacco product	5.4 (4.1–7.0)	4.8 (2.8–7.8)	4.2 (2.7–6.3)	2.5 (1.3–4.6) ^d	2.2 (1.2–4.0)	3.4 (1.9–6.2) ^d	1.8 (1.1–3.0)	
Current use of only cigarettes and smokeless tobacco	.5 (.2–1.1) ^d	1.6 (.6–3.9) ^d	.4 (1–2.2) ^d	.5 (1–1.7) ^d	.2 (0.0–.9) ^d	.8 (.3–2.2) ^d	.5 (.2–1.1) ^d	
Current use of only cigarettes and cigars	3.3 (2.3–4.8)	2.9 (1.8–4.7)	3.4 (2.2–5.2)	1.9 (.9–4.1) ^d	1.7 (.9–3.5) ^d	1.5 (.7–3.1) ^d	1.1 (.6–1.9)	
Current use of only cigarettes and only 1 other tobacco product	1.6 (1.0–2.5)	.3 (1–1.2) ^d	.3 (1–1.0) ^d	.1 (0.0–.5) ^d	.3 (1–.9) ^d	1.1 (4–2.9) ^d	.3 (1–1.0) ^d	
No current use of cigarettes but only 2 tobacco products	.6 (.2–1.6) ^d	.3 (1–.8) ^d	.2 (0.0–.6) ^d	.9 (4–2.1) ^d	.4 (1–1.2) ^d	.7 (2–1.9) ^d	.5 (2–1.3) ^d	
Current use of at least 3 tobacco products	5.6 (4.1–7.6)	3.8 (2.1–6.5)	3.1 (2.2–4.5)	2.0 (1.0–3.8) ^d	3.5 (2.0–6.0)	2.3 (1.2–4.4) ^d	2.1 (1.2–3.7)	
Current use of cigarettes and at least 2 tobacco products	5.5 (4.0–7.5)	3.8 (2.1–6.5)	2.9 (2.0–4.3)	1.8 (.9–3.6) ^d	3.5 (2.0–6.0)	2.3 (1.2–4.4) ^d	2.1 (1.2–3.7)	
Current use of only cigarettes, cigars, and smokeless tobacco	.2 (1–.7) ^d	.3 (1–1.1) ^d	.4 (1–1.5) ^d	.4 (1–1.8) ^d	.5 (2–1.4) ^d	.3 (1–1.2) ^d	.8 (2–2.4) ^d	
Current use of only cigarettes, smokeless tobacco, and at least 1 other tobacco product	.2 (1–.7) ^d	0.0 (–) ^d	.2 (0.0–1.1) ^d	0.0 (–) ^d	.3 (1–1.2) ^d	.6 (1–3.2) ^d	.1 (0.0–.4) ^d	
Current use of only cigarettes, cigars, and at least 1 other tobacco product	2.5 (1.6–3.9)	1.4 (7–2.9) ^d	1.5 (8–2.7) ^d	.8 (3–2.0) ^d	1.4 (7–2.7) ^d	.7 (2–3.1) ^d	.5 (2–1.3) ^d	
Current use of only cigarettes and at least 2 other tobacco products	.3 (1–.8) ^d	0.0 (–) ^d	0.0 (–) ^d	0.0 (–) ^d	0.0 (–) ^d	0.0 (–) ^d	0.0 (–) ^d	
Current use of cigarettes, smokeless tobacco, cigars, and at least 1 other tobacco product	2.2 (1.3–3.6)	2.1 (1.1–4.1) ^d	.9 (4–1.9) ^d	.5 (2–1.5) ^d	1.3 (5–3.3) ^d	.7 (2–2.4) ^d	.8 (4–1.8) ^d	

Characteristics	Survey year						Trends
	2000 % (95% CI)	2002 % (95% CI)	2004 % (95% CI)	2006 % (95% CI)	2009 % (95% CI)	2011 % (95% CI)	
No current use of cigarettes but at least 3 tobacco products	.1 (0.0-.9) ^d	0.0 (-.0) ^d	.2 (0.0-1.4) ^d	.2 (0.0-1.5) ^d	0.0 (-.0) ^d	0.0 (-.0) ^d	0.0 (-.0) ^d

CI = confidence interval.

^a Linear trend.

^b Linear and quadratic trend.

^c Other Tobacco is defined as use of pipe, bidis, or kreteks on at least 1 day of the past 30 days.

^d Data statistically unstable (denominator <50 and/or relative standard error >30%).

Table 4
Current tobacco use among U.S. high school students, by grade, National Youth Tobacco Survey, 2000–2012

Characteristics	Survey year							Trends
	2000 % (95% CI)	2002 % (95% CI)	2004 % (95% CI)	2006 % (95% CI)	2009 % (95% CI)	2011 % (95% CI)	2012 % (95% CI)	
9th grade								
Sample size	5,288 out of 5,615	3,651 out of 3,978	3,880 out of 4,359	3,713 out of 4,170	2,859 out of 3,118	2,369 out of 2,513	3,074 out of 3,262	
Any current tobacco use	26.5 (24.2–28.9)	20.2 (17.7–22.9)	18.5 (15.6–21.7)	18.6 (16.8–20.6)	13.9 (10.6–18.1)	16.0 (13.0–19.5)	14.2 (12.3–16.4)	<i>a</i>
Current use of only 1 tobacco product	15.0 (13.6–16.5)	12.1 (10.3–14.2)	10.4 (8.8–12.4)	10.7 (9.4–12.2)	8.5 (6.5–11.0)	9.3 (7.6–11.4)	7.1 (6.0–8.4)	<i>a</i>
Current use of only cigarettes	10.9 (9.6–12.3)	8.2 (7.0–9.6)	8.3 (6.9–9.9)	7.1 (6.0–8.3)	5.6 (4.0–7.8)	5.0 (3.9–6.4)	3.1 (2.4–4.0)	<i>a</i>
Current use of only smokeless tobacco	1.4 (1.0–1.8)	1.8 (1.1–3.1)	.8 (.5–1.3)	1.6 (1.0–2.6)	1.3 (.7–2.3) ^d	2.0 (1.3–3.1)	1.4 (.9–2.1)	
Current use of only cigars	2.3 (1.8–2.8)	1.8 (1.3–2.5)	1.2 (.9–1.6)	1.6 (1.2–2.1)	1.0 (.5–1.7) ^d	1.6 (1.0–2.3)	2.2 (1.6–3.0)	
Current use of only 1 other tobacco ^c product	.4 (.3–.7)	.3 (.1–.5) ^d	.2 (.1–.4) ^d	.4 (.2–.8) ^d	.7 (.2–2.3) ^d	.7 (.4–1.2)	.4 (.2–.7)	
Current poly tobacco use	11.5 (10.2–13)	8.0 (7.0–9.2)	8.0 (6.4–10.0)	7.9 (6.8–9.3)	5.4 (3.7–7.9)	6.7 (5.0–8.9)	7.1 (5.8–8.7)	<i>a</i>
Current use of only 2 tobacco products	6.7 (5.8–7.7)	4.9 (4.1–5.9)	4.3 (3.4–5.4)	4.3 (3.5–5.2)	2.6 (1.7–4.1)	3.5 (2.5–4.9)	4.4 (3.5–5.7)	<i>a</i>
Current use of cigarettes and 1 tobacco product	5.9 (5.0–7.0)	4.3 (3.7–5.2)	3.7 (2.9–4.8)	3.4 (2.7–4.3)	2.3 (1.5–3.6)	2.6 (2.0–3.5)	3.2 (2.4–4.3)	<i>a</i>
Current use of only cigarettes and smokeless tobacco	.7 (.5–1.1)	1.0 (.5–1.8) ^d	.6 (.3–1.2) ^d	.5 (.3–.9)	.8 (.4–1.7) ^d	.4 (.2–.8) ^d	.6 (.3–1.1)	
Current use of only cigarettes and cigars	3.8 (3.1–4.6)	2.8 (2.3–3.5)	2.6 (2.0–3.4)	2.4 (1.9–3.1)	1.1 (.7–1.8)	1.8 (1.3–2.5)	2.3 (1.7–3.2)	<i>b</i>
Current use of only cigarettes and only 1 other tobacco product	1.4 (1–1.9)	.6 (.3–1.0) ^d	.5 (.3–.8)	.5 (.3–.8)	.4 (.1–1.0) ^d	.4 (.2–.9) ^d	.3 (.2–.6) ^d	
No current use of cigarettes but only 2 tobacco products	.8 (.5–1.1)	.6 (.3–1.2) ^d	.6 (.3–.9)	.9 (.6–1.3)	.3 (.1–.7) ^d	.9 (.5–1.8) ^d	1.2 (.8–2)	
Current use of at least 3 tobacco products	4.8 (4.1–5.7)	3.1 (2.5–3.8)	3.8 (2.8–5.0)	3.7 (2.9–4.6)	2.8 (1.9–4.2)	3.1 (2.3–4.3)	2.7 (2.0–3.5)	
Current use of cigarettes and at least 2 tobacco products	4.6 (3.9–5.4)	2.8 (2.3–3.5)	3.6 (2.7–4.8)	3.5 (2.8–4.5)	2.7 (1.8–4.1)	3.0 (2.2–4.2)	2.6 (1.9–3.5)	
Current use of only cigarettes, cigars, and smokeless tobacco	.7 (.5–1.0)	.6 (.3–1.0)	.5 (.3–.9)	.9 (.5–1.5)	.6 (.3–1.4) ^d	.7 (.4–1.4) ^d	.3 (.1–.7) ^d	

Characteristics	Survey year							Trends
	2000 % (95% CI)	2002 % (95% CI)	2004 % (95% CI)	2006 % (95% CI)	2009 % (95% CI)	2011 % (95% CI)	2012 % (95% CI)	
Current use of only cigarettes, smokeless tobacco, and at least 1 other	.3 (.2-.5)	.1 (0.0-.3) ^d	.2 (.1-.5) ^d	.1 (0.0-.3) ^d	.4 (.2-1.2) ^d	.1 (0.0-.2) ^d	.1 (0.0-.4) ^d	
Current use of only cigarettes, cigars, and at least 1 other tobacco product	2.3 (1.8-2.9)	1.4 (1.0-2.0)	1.5 (1.1-2.2)	1.1 (.7-1.8)	1.0 (.6-1.6)	1.3 (.8-2.1)	1.1 (.7-1.7)	
Current use of only cigarettes and at least 2 other tobacco products	.2 (.1-.4) ^d	.1 (0.0-.2) ^d	.2 (.1-.5) ^d	.2 (.1-.5) ^d	.1 (0.0-.4) ^d	.1 (0.0-.6) ^d	.1 (0.0-.3) ^d	
Current use of cigarettes, smokeless tobacco, cigars, and at least 1 other tobacco product	1.1 (.8-1.4)	.7 (.4-1.1)	1.1 (.7-1.8)	1.2 (.8-1.9)	.6 (.3-1.1) ^d	.8 (.4-1.5) ^d	1.0 (.6-1.5)	
No current use of cigarettes but at least 3 tobacco products	.3 (.1-.5) ^d	.3 (.1-.5) ^d	.2 (.1-.4) ^d	.1 (.1-.3) ^d	.1 (.1-.3) ^d	.1 (0.0-.3) ^d	.1 (0.0-.2) ^d	
10th grade								
Sample size	4,695 out of 4,965	3,282 out of 3,517	3,214 out of 3,615	3,662 out of 4,078	2,828 out of 3,040	2,198 out of 2,327	2,924 out of 3,113	
Any current tobacco use	33.6 (30.6-36.8)	25.4 (23.1-27.9)	25.2 (22.2-28.3)	24.3 (21.4-27.5)	20.3 (17.2-23.7)	19.9 (17.3-22.8)	18.8 (16.3-21.6)	<i>a</i>
Current use of only 1 tobacco product	18.3 (16.4-20.3)	15.6 (13.8-17.6)	14.0 (12.1-16.1)	12.8 (11.1-14.8)	11.6 (9.6-14.0)	11.3 (9.8-13.0)	9.7 (8.2-11.5)	<i>a</i>
Current use of only cigarettes	13.6 (12.0-15.4)	11.4 (9.7-13.4)	9.8 (8.1-12.0)	8.6 (7.3-10.3)	6.9 (5.8-8.2)	5.9 (4.6-7.5)	4.8 (3.9-5.9)	<i>a</i>
Current use of only smokeless tobacco	1.4 (1.0-2.0)	1.6 (1.1-2.3)	1.4 (.9-2.2)	1.7 (1.1-2.4)	2.2 (1.2-3.9) ^d	2.0 (1.3-3.1)	1.8 (1.1-2.8)	
Current use of only cigars	2.8 (2.3-3.4)	2.1 (1.6-2.8)	2.6 (1.8-3.6)	2.2 (1.6-2.9)	2.1 (1.2-3.6)	3.2 (2.4-4.3)	2.8 (2.1-3.8)	
Current use of only 1 other tobacco product	.5 (.3-.8)	.5 (.2-.9) ^d	.2 (.1-.4) ^d	.3 (.2-.7) ^d	.4 (.1-1.2) ^d	.3 (.2-.6) ^d	.3 (.2-.6) ^d	
Current poly tobacco use	15.3 (13.7-17.2)	9.8 (8.7-11.1)	11.1 (9.5-13.0)	11.5 (9.8-13.5)	8.6 (6.8-10.9)	8.5 (6.9-10.5)	9.1 (7.3-11.2)	
Current use of only 2 tobacco products	9.1 (8.0-10.4)	6.0 (5.2-7.0)	7.1 (5.8-8.6)	6.3 (5.1-7.8)	4.7 (3.6-5.9)	5.0 (4.0-6.2)	5.1 (4.0-6.4)	<i>a</i>
Current use of cigarettes and 1 tobacco product	7.9 (6.8-9.1)	5.0 (4.2-6.0)	6.1 (5.0-7.3)	5.7 (4.5-7.1)	3.8 (3.0-4.9)	4.4 (3.4-5.7)	4.2 (3.3-5.3)	<i>a</i>
Current use of only cigarettes and smokeless tobacco	1.2 (.8-1.6)	1.0 (.6-1.7)	.7 (.3-2.0) ^d	.8 (.5-1.4)	.9 (.5-1.5)	1.6 (1.0-2.8)	.8 (.4-1.3)	
Current use of only cigarettes and cigars	5.3 (4.3-6.5)	2.7 (2.1-3.6)	4.9 (3.9-6.1)	3.8 (3.0-4.9)	2.6 (2.0-3.3)	2.5 (1.8-3.4)	2.9 (2.1-3.9)	
Current use of only cigarettes and only 1 other tobacco product	1.4 (1.1-1.8)	1.3 (.8-1.9)	.5 (.2-.8) ^d	1.1 (.7-1.5)	.4 (.2-1.1) ^d	.3 (.1-.6) ^d	.5 (.3-.9) ^d	

Characteristics	Survey year							Trends
	2000 % (95% CI)	2002 % (95% CI)	2004 % (95% CI)	2006 % (95% CI)	2009 % (95% CI)	2011 % (95% CI)	2012 % (95% CI)	
No current use of cigarettes but only 2 tobacco products	1.3 (0.9-1.7)	1.0 (0.7-1.6)	1.0 (0.6-1.7)	.6 (0.4-1.1)	.8 (0.5-1.5)	.6 (0.4-1.0)	.9 (0.6-1.4)	
Current use of at least 3 tobacco products	6.2 (5.2-7.4)	3.8 (3.1-4.7)	4.1 (3.3-4.9)	5.2 (4.3-6.3)	4.0 (2.8-5.6)	3.5 (2.4-5.1)	4.0 (2.9-5.3)	
Current use of cigarettes and at least 2 tobacco products	6.0 (5.0-7.2)	3.8 (3.0-4.7)	3.8 (3.1-4.7)	5.0 (4.1-6.0)	3.6 (2.5-5.2)	3.5 (2.4-5.1)	3.6 (2.6-4.8)	
Current use of only cigarettes, cigars, and smokeless tobacco	1.3 (0.8-1.9)	1.1 (0.7-1.8)	1.2 (0.8-1.7)	1.3 (0.9-1.9)	.9 (0.4-1.8) ^d	1.1 (0.6-2)	.8 (0.5-1.3)	
Current use of only cigarettes, smokeless tobacco, and at least 1 other tobacco product	.3 (0.1-.5) ^d	0.0 (-.1) ^d	.1 (0.0-.3) ^d	.2 (0.1-.6) ^d	.1 (0.0-.3) ^d	.2 (0.0-.7) ^d	.1 (0.0-.3) ^d	
Current use of only cigarettes, cigars, and at least 1 other tobacco product	2.7 (2.2-3.4)	1.5 (1.1-2.1)	1.6 (1.1-2.2)	1.4 (1.0-1.9)	.9 (0.6-1.5)	1.1 (0.6-2.0)	1.3 (0.9-1.9)	
Current use of only cigarettes and at least 2 other tobacco products	.4 (0.2-.6)	.2 (0.1-.4) ^d	.1 (0.0-.3) ^d	.2 (0.1-.5) ^d	.2 (0.0-.5) ^d	.1 (0.0-.2) ^d	0.0 (0.0-.2) ^d	
Current use of cigarettes, smokeless tobacco, cigars, and at least 1 other tobacco product	1.4 (1.0-1.9)	.9 (0.6-1.4)	.9 (0.6-1.2)	1.8 (1.3-2.5)	1.6 (1.0-2.5)	1.1 (0.5-2.1) ^d	1.3 (0.8-2.1)	
No current use of cigarettes but at least 3 tobacco products	.2 (0.1-.4) ^d	0.0 (0.0-.3) ^d	.2 (0.1-.4) ^d	.2 (0.1-.5) ^d	.3 (0.2-.7) ^d	0.0 (-.1) ^d	.4 (0.2-.8) ^d	
11th grade								
Sample size	4,677 out of 4,949	2,973 out of 3,248	2,811 out of 3,097	3,032 out of 3,410	2,835 out of 3,045	2,277 out of 2,393	3,140 out of 3,344	
Any current tobacco use	35.8 (33.5-38.3)	28.4 (25.4-31.7)	27.7 (24.8-30.7)	26.6 (23.9-29.5)	25.6 (21.9-29.7)	23.6 (20.5-27.0)	21.8 (19.4-24.4)	<i>a</i>
Current use of only 1 tobacco product	19.8 (18.1-21.6)	17.7 (15.7-19.9)	16.6 (14.6-18.7)	15.8 (13.6-18.3)	14.4 (12.6-16.5)	12.5 (10.8-14.4)	11.3 (9.7-13.1)	<i>a</i>
Current use of only cigarettes	14.6 (13.1-16.3)	13.2 (11.2-15.6)	12.2 (10.3-14.4)	10.8 (8.8-13.3)	9.5 (8.2-11.1)	6.7 (5.4-8.2)	5.1 (4.2-6.1)	<i>b</i>
Current use of only smokeless tobacco	1.5 (1.0-2.0)	1.2 (0.7-1.8)	1.2 (0.7-1.9)	1.7 (1.1-2.7)	1.7 (1.1-2.7)	2.2 (1.4-3.3)	1.8 (1.0-3.1)	
Current use of only cigars	3.3 (2.7-4)	2.7 (2.0-3.7)	3.0 (2.3-3.9)	3.1 (2.4-4.0)	2.8 (1.8-4.1)	3.2 (2.4-4.1)	3.9 (3.1-4.9)	
Current use of only 1 other tobacco product	.4 (0.2-.7)	.7 (0.4-1.2)	.2 (0.1-.5) ^d	.2 (0.1-.5) ^d	.4 (0.2-1.0) ^d	.5 (0.2-1.0) ^d	.5 (0.3-.9)	
Current poly tobacco use	16.1 (14.4-17.8)	10.7 (9.2-12.4)	11.1 (9.3-13.2)	10.8 (9.0-12.7)	11.2 (9.0-13.9)	11.1 (8.8-13.8)	10.5 (8.8-12.4)	
Current use of only 2 tobacco products	9.9 (8.7-11.2)	6.4 (5.2-7.7)	6.9 (5.7-8.3)	6.4 (5.3-7.8)	6.7 (5.3-8.5)	6.7 (5.0-8.9)	6.2 (5.2-7.4)	

Characteristics	Survey year								Trends
	2000 % (95% CI)	2002 % (95% CI)	2004 % (95% CI)	2006 % (95% CI)	2009 % (95% CI)	2011 % (95% CI)	2012 % (95% CI)		
Current use of cigarettes and 1 tobacco product	8.9 (7.8–10.1)	5.1 (4.2–6.3)	6.2 (5–7.7)	5.7 (4.7–6.9)	5.9 (4.6–7.5)	5.6 (4.2–7.6)	4.9 (4.0–6.0)		
Current use of only cigarettes and smokeless tobacco	1.6 (1.1–2.3)	1.1 (7–1.6)	.6 (3–1.2) ^d	1.2 (7–1.9)	1.7 (1.1–2.5)	1.9 (1.2–3.0)	1.2 (1.8–1.8)		
Current use of only cigarettes and cigars	5.2 (4.3–6.1)	3.1 (2.3–4.1)	4.9 (3.8–6.1)	3.5 (2.7–4.6)	3.8 (3.0–4.8)	3.5 (2.6–4.7)	3.0 (2.4–3.8)		
Current use of only cigarettes and only 1 other tobacco product	2.1 (1.7–2.6)	1.0 (6–1.6)	.7 (3–1.5) ^d	1.0 (6–1.7)	.5 (3–1.0) ^d	.3 (1–6) ^d	.7 (4–1.1)		
No current use of cigarettes but only 2 tobacco products	1.0 (7–1.4)	1.2 (8–1.8)	.7 (4–1.2)	.7 (4–1.2)	.8 (4–1.4)	1.1 (6–1.8)	1.3 (9–1.9)		
Current use of at least 3 tobacco products	6.2 (5.2–7.3)	4.3 (3.4–5.5)	4.2 (3.2–5.5)	4.3 (3.4–5.4)	4.5 (3.3–6.1)	4.4 (3.4–5.5)	4.3 (3.2–5.6)		
Current use of cigarettes and at least 2 tobacco products	5.9 (5.0–7.0)	4.2 (3.3–5.4)	3.9 (3.0–5.2)	4.1 (3.2–5.2)	4.2 (3.1–5.7)	4.2 (3.3–5.3)	4.0 (3.0–5.3)		
Current use of only cigarettes, cigars, and smokeless tobacco	1.6 (1.2–2.3)	1.5 (9–2.5)	1.1 (7–1.8)	.9 (6–1.3)	1.8 (1.1–2.9)	1.7 (1.1–2.5)	1.5 (1.0–2.4)		
Current use of only cigarettes, smokeless tobacco, and at least 1 other	.3 (2–.5)	.1 (0.0–.5) ^d	.2 (0.0–.6) ^d	.2 (1–.5) ^d	.1 (1–.3) ^d	.2 (0.0–.6) ^d	.2 (1–.8) ^d		
Current use of only cigarettes, cigars, and at least 1 other tobacco product	2.5 (1.9–3.2)	1.5 (1.0–2.1)	1.7 (1.0–2.7)	2 (1.4–2.7)	1.1 (8–1.5)	.9 (6–1.3)	1.2 (8–1.8)	<i>a</i>	
Current use of only cigarettes and at least 2 other tobacco products	.4 (2–.6)	.1 (0.0–.4) ^d	.2 (1–.4) ^d	.2 (0.0–.8) ^d	0.0 (0.0–.2) ^d	.1 (0.0–.6) ^d	.1 (0.0–.4) ^d		
Current use of cigarettes, smokeless tobacco, cigars, and at least 1 other tobacco product	1.1 (8–1.6)	1 (5–1.9) ^d	.8 (5–1.4)	.9 (5–1.4)	1.2 (7–2.0)	1.4 (9–2.2)	1 (7–1.5)		
No current use of cigarettes but at least 3 tobacco products	.3 (2–.5) ^d	.1 (0.0–.3) ^d	.3 (1–.7) ^d	.2 (1–.5) ^d	.3 (1–.6) ^d	.2 (1–.5) ^d	.2 (1–.5) ^d		
12th grade									
Sample size	3,559 out of 3,821	2,524 out of 2,717	2,413 out of 2,667	2,473 out of 2,831	2,924 out of 3,143	2,354 out of 2,487	2,991 out of 3,180		
Any current tobacco use	41.0 (37.6–44.5)	38.0 (34.7–41.5)	38.2 (34.6–41.8)	29.6 (26.1–33.4)	28.8 (24.3–33.8)	30.9 (27.9–34.1)	28.0 (24.9–31.2)	<i>a</i>	
Current use of only 1 tobacco product	23.9 (21.4–26.5)	22.8 (20.4–25.5)	23.0 (20.4–25.8)	15.8 (13.8–18.2)	15.9 (14.0–18.0)	16.6 (14.3–19.2)	14.6 (12.7–16.6)	<i>b</i>	
Current use of only cigarettes	18.3 (16.0–20.8)	18.3 (15.8–21.1)	16.2 (14.1–18.5)	11.7 (9.9–13.9)	11.0 (9.8–12.4)	7.8 (6.3–9.6)	6.1 (5.1–7.4)	<i>a</i>	

Author Manuscript

Author Manuscript

Author Manuscript

Author Manuscript

Characteristics	Survey year								Trends
	2000 % (95% CI)	2002 % (95% CI)	2004 % (95% CI)	2006 % (95% CI)	2009 % (95% CI)	2011 % (95% CI)	2012 % (95% CI)		
Current use of only smokeless tobacco	1.4 (0.9–2.0)	.9 (.5–1.6) ^d	2.0 (1.3–3.2)	.8 (.5–1.4)	1.3 (.8–2.1)	2.5 (1.7–3.8)	1.7 (1.2–2.3)		
Current use of only cigars	3.8 (3.1–4.7)	3.5 (2.6–4.6)	4.5 (3.7–5.5)	3.1 (2.3–4.1)	3.4 (2.4–4.7)	5.3 (4.0–7.2)	6.1 (5.0–7.5)		
Current use of only 1 other tobacco product	.4 (.2–.7)	.2 (.1–.6) ^d	.2 (.1–.5) ^d	.2 (.1–.4) ^d	.2 (.1–.4) ^d	.9 (.4–2.3) ^d	.6 (.4–1.0)		
Current poly tobacco use	17.1 (15.4–19.0)	15.2 (13.0–17.8)	15.2 (13.0–17.7)	13.7 (11.6–16.2)	12.9 (9.5–17.3)	14.3 (12.4–16.4)	13.4 (11.4–15.6)		
Current use of only 2 tobacco products	11.2 (10.0–12.5)	9.4 (8.0–10.9)	9.8 (8.3–11.6)	9.0 (7.3–11.0)	8.5 (5.9–12.0)	9.4 (7.7–11.4)	8.6 (7.1–10.4)		
Current use of cigarettes and 1 tobacco product	9.7 (8.7–10.9)	8.6 (7.2–10.1)	8.7 (7.3–10.4)	8.1 (6.4–10.1)	6.9 (4.9–9.6)	8.2 (6.6–10.1)	6.7 (5.4–8.2)	<i>a</i>	
Current use of only cigarettes and smokeless tobacco	1.5 (1.1–2.1)	1.6 (1.0–2.6)	1.6 (1.0–2.6)	1.7 (.9–3.2) ^d	1.9 (1.1–3.4)	2.1 (1.2–3.5)	1.6 (1.1–2.3)		
Current use of only cigarettes and cigars	5.9 (5.1–6.8)	5.6 (4.7–6.6)	6.7 (5.4–8.2)	4.8 (4.0–5.7)	4.6 (3.4–6.1)	5.4 (4.1–7.1)	4.3 (3.4–5.4)	<i>a</i>	
Current use of only cigarettes and only 1 other tobacco product	2.3 (1.8–3.0)	1.4 (.9–2.2)	.4 (.2–1.0) ^d	1.6 (.9–2.8)	.4 (.2–.8) ^d	.7 (.3–1.6) ^d	.8 (.5–1.3)		
No current use of cigarettes but only 2 tobacco products	1.5 (1.0–2.0)	.8 (.4–1.4)	1.1 (.7–1.7)	.9 (.6–1.6)	1.5 (.8–2.9) ^d	1.2 (.7–1.9)	1.9 (1.3–2.7)		
Current use of at least 3 tobacco products	5.9 (5.0–7.0)	5.9 (4.4–7.7)	5.4 (4.2–6.8)	4.7 (3.7–6.0)	4.5 (3.3–6.0)	4.9 (4.0–6.0)	4.8 (3.8–6.0)	<i>a</i>	
Current use of cigarettes and at least 2 tobacco products	5.6 (4.7–6.7)	5.7 (4.3–7.6)	5.0 (3.9–6.4)	4.4 (3.4–5.7)	4.4 (3.3–5.8)	4.8 (3.9–5.9)	4.6 (3.6–5.8)		
Current use of only cigarettes, cigars, and smokeless tobacco	1.8 (1.3–2.5)	2.0 (1.3–3.0)	.9 (.6–1.5)	1.5 (.9–2.3)	1.0 (.6–1.8)	1.3 (.8–2.2)	1.4 (.9–1.9)		
Current use of only cigarettes, smokeless tobacco, and at least 1 other tobacco product	.3 (.1–.7) ^d	.1 (0.0–.4) ^d	0.0 (0.0–.1) ^d	0.0 (0.0–.2) ^d	.2 (.1–.6) ^d	.3 (.1–.7) ^d	.2 (.1–.6) ^d		
Current use of only cigarettes, cigars, and at least 1 other tobacco product	2.1 (1.6–2.8)	1.8 (1.2–2.5)	1.9 (1.3–2.7)	1.8 (1.2–2.7)	1.9 (1.4–2.5)	1.6 (1.0–2.5)	1.4 (1.0–2.0)		
Current use of only cigarettes and at least 2 other tobacco products	.3 (.2–.6)	0.0 (0.0–.2) ^d	.1 (0.0–.3) ^d	.2 (.1–.6) ^d	.1 (0.0–.3) ^d	.1 (0.0–.3) ^d	0.0 (0.0–.2) ^d		
Current use of cigarettes, smokeless tobacco, cigars, and at least 1 other tobacco product	1.1 (.8–1.6)	1.8 (1.1–2.9)	2.1 (1.3–3.3)	.9 (.6–1.4)	1.2 (.7–2.0)	1.5 (1–2.4)	1.6 (1.1–2.2)		
No current use of cigarettes but at least 3 tobacco products	.3 (.1–.5) ^d	.1 (0.0–.7) ^d	.4 (.2–.8) ^d	.3 (.1–.8) ^d	.1 (0.0–.3) ^d	.1 (0.0–.3) ^d	.3 (.1–.6) ^d		

Author Manuscript

Author Manuscript

Author Manuscript

Author Manuscript

CI = confidence interval.

b_1 Linear trend.

b_2 Linear and quadratic trend.

c Other Tobacco is defined as use of pipe, bidis, or kreteks on at least 1 day of the past 30 days.

d Data statistically unstable (denominator < 50 and/or relative standard error > 30%).