

RESEARCH ARTICLE

Open Access

Extracellular fluid flow and chloride content modulate H⁺ transport by osteoclasts



Priscilla Morethson^{1,2} 

Abstract

Background: Bone resorption takes place within the basic multicellular units (BMU), and the surface to be resorbed is isolated from adjacent bone surfaces by a sealing zone between osteoclast membrane and bone matrix, which defines the limits of the resorption lacuna. Considering that the extracellular fluid (ECF) in both BMU and the resorption lacuna can be isolated from its surroundings, I hypothesize that flow and ion composition of the bone ECF in these sites might contribute to the regulation of osteoclast H⁺ secretion. To investigate this hypothesis, I evaluated the H⁺ secretion properties of individual osteoclasts and osteoclast-like cells (OCL-cells) and investigated whether changes in flow or chloride content of the extracellular solution modify the H⁺ secretion properties in vitro.

Results: The results show that 1) osteoclasts are unable to secrete H⁺ and regulate intracellular pH (pH_i) under continuous flow conditions and exhibit progressive intracellular acidification; 2) the cessation of flow coincides with the onset of H⁺ secretion and subsequent progressive intracellular alkalinization of osteoclasts and OCL-cells; 3) osteoclasts exhibit spontaneous rhythmic oscillations of pH_i in non-flowing ECF, 4) pH_i oscillations are not abolished by concanamycin, NPPB, or removal of extracellular Na⁺ or Cl⁻; 5) extracellular Cl⁻ removal modifies the pattern of oscillations, by diminishing H⁺ secretion; 6) pH_i oscillations are abolished by continuous flowing of ECF over osteoclasts and OCL-cells.

Conclusions: The data suggest, for the first time, that ECF flow and Cl⁻ content have direct effects on osteoclast H⁺ secretion and could be part of a mechanism determining the onset of osteoclast H⁺ secretion required for bone resorption.

Keywords: Osteoclast, Intracellular pH regulation, ClC-7, Proton secretion, Bone resorption, Bone extracellular fluid, Fluorescence microscopy, Bis-carboxyethyl-carboxyfluorescein-AM (BCECF-AM)

Background

Bone resorption is important for maintaining mineral homeostasis, adapting to functional loading, and healing damaged and fractured sites. The process of bone consumption is regulated by the number of osteoclasts, and relies heavily on the ability of individual osteoclasts to secrete H⁺ through the ruffled border, thus lowering the extracellular pH (pH_e) at a delimited bone surface.

The first demonstration of an acidic area adjacent to osteoclasts utilized the fluorescent probe acridine orange [1]. Later, it was shown—using pH microelectrodes—that osteoclasts can acidify the contact zone with a culture dish

to less than pH 3 within a few minutes [2]. It has been proposed that extracellular acidification is a key step for the dissolution of the apatite-containing mineralized matrix [3, 4] and osteoclast intracellular pH (pH_i) regulation [5–8]; in addition, H⁺ secretion creates a suitable pH, in the resorption lacuna, for enzymes to degrade the organic matrix [9]. Therefore, bone resorption depends on the expression and activity of H⁺-secreting proteins at the osteoclast ruffled border.

Several mechanisms have been implicated in contributing to the acidification of the resorption lacuna; such as: H⁺ secretion through vacuolar H⁺-ATPase (V-ATPase) [10] and a H⁺-coupled Cl⁻ secretion, by chloride channel 7 (ClC-7) [11]. Furthermore, the Na⁺/H⁺ exchanger, NHE-10 isoform [12], and a H⁺ conductance have been reported to regulate pH_i by means of acid secretion [5, 6, 13].

Correspondence: primoret@icb.usp.br

¹Department of Physiology and Biophysics, Institute of Biomedical Sciences, University of São Paulo, São Paulo, SP, Brazil

²Department of Biosciences, Federal University of São Paulo - Unifesp, R. Silva Jardim 136 Vila Mathias, Santos 11065-201, SP, Brazil



© 2015 Morethson. **Open Access** This article is distributed under the terms of the Creative Commons Attribution 4.0 International License (<http://creativecommons.org/licenses/by/4.0/>), which permits unrestricted use, distribution, and reproduction in any medium, provided you give appropriate credit to the original author(s) and the source, provide a link to the Creative Commons license, and indicate if changes were made. The Creative Commons Public Domain Dedication waiver (<http://creativecommons.org/publicdomain/zero/1.0/>) applies to the data made available in this article, unless otherwise stated.

The movement of acid–base equivalents across the plasma membrane is crucial for pH_i regulation [14, 15]. At the osteoclast plasma membrane, the base-transporters include NBCn1 (Na^+ - HCO_3^- cotransporter) [16], and AE2 ($\text{Cl}^-/\text{HCO}_3^-$ anion exchanger) [12, 17, 18]; and the acid-transporters include V-ATPase, Na^+/H^+ exchanger and the aforementioned H^+ conductance [5, 6, 13]. In addition to its role in osteoclast pH_i regulation, H^+ secretion by the V-ATPase works in parallel with ClC-7 [19], which have been proposed as the key components of cellular machinery for extracellular acidification at the ruffled border (Fig. 1). It should also be noted that pH_i regulation is related to the translocation of several ions (as Na^+ and Cl^-) across the plasma membrane by specific proteins.

Osteoclast activity and function depends on chemical signaling from cellular and paracrine interactions between osteoclasts and osteoblasts, as well as bone marrow and immune cells, and is regulated by several hormones and cytokines [20]. One of the most important signals for induction of osteoclast differentiation and function is the receptor activator of nuclear kappa-B ligand (RANK-L).

Physical stimuli, for instance functional loading and exercise, also play a role in controlling bone formation, resorption and remodeling. Mechanical loading of bone promotes osteocyte responses to fluid shear stress, which results in changes in the osteocyte activity [21–24] and indirect inhibition of osteoclast formation and bone resorption [25].

Despite the crucial role of osteoclasts in physiological mineral homeostasis and bone adaptive responses, direct effects of flow and ECF ion composition on osteoclast function are otherwise not known. The primary goal of this work is to investigate the effect of extracellular fluid flow rate (5 mL/min versus 0 mL/min) and Cl^- content on osteoclast H^+ secretion. The results show that both

extracellular fluid flow and Cl^- content modify osteoclast H^+ transport.

Results and discussion

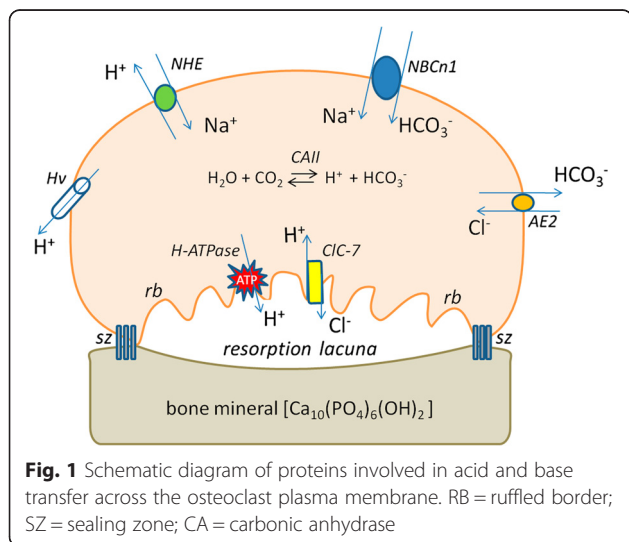
H^+ secretion after acid load varies among cells in the absence of extracellular solution flow

As previously described by Boron and De Weer [26], applying a solution containing NH_4Cl initially causes an increase in pH_i . Initially NH_3 diffuses across the cell membrane and combines with a H^+ inside the cell; NH_4^+ can also move into the cell through K^+ transporters, bringing extra H^+ , however, this process is slower. The removal of NH_4Cl solution causes a decrease in pH_i . The intracellular NH_3 rushes out the cell, leaving the H^+ inside. The cell responds to this fall in pH_i by activating acid extruding mechanisms. In a set of experiments, I used bis-carboxyethyl-carboxyfluorescein (BCECF-AM) fluorescence to monitor pH_i changes using NH_4Cl prepulse technique. Indeed I was able to monitor pH_i changes following acid load (Figs. 2 and 3), in both osteoclasts and OCL-cells. A BCECF-loaded osteoclast is shown in (Additional file 1: Figure S1).

It was observed that osteoclasts do not properly regulate pH_i after the NH_4Cl prepulse in the presence of continuous ECF flow; these cells exhibited a progressive intracellular acidification ($n = 6$) after discrete recovery from the acid load, which is evidenced by the small ΔpH_i (Fig. 2a.) In contrast, when ECF flow was stopped, the osteoclasts secreted H^+ at different rates (dpH_i/dt) after the acid load (Fig. 2b), resulting in a higher value of ΔpH_i in comparison to that obtained under continuous ECF flow. During the first two minutes following the acid load, the dpH_i/dt varies from 0.01 to 0.58 pH units/min ($n = 27$). The values for each osteoclast studied are presented in Additional file 2. The rates of H^+ secretion do not appear to be related to cell size; however, there is a positive correlation ($r = 0.4522$, $p = 0.0089$, $n = 27$; one-tailed Pearson) between dpH_i/dt and the magnitude of acidification (i.e. the difference between initial pH_i and the lowest pH_i recorded after NH_4Cl solution removal). This correlation was also reported by Ravesloot et al. [6] and may be related to the amount of H^+ to be transported after the acid load.

Osteoclasts and OCL-cells exhibit an oscillatory pH_i in non-flowing extracellular solution

Under no ECF flow conditions, H^+ secretion after the acid load causes intracellular alkalization to a maximal pH_i value. Subsequently, the cells initiate a period of spontaneous cellular acidification to a minimal pH_i value; then the alkalization restarts. This oscillatory pattern is repeated in regular periods of spontaneous acidification and alkalization (Fig. 3a). These rhythmic pH_i fluctuations were observed in both osteoclasts and OCL-cells, and were



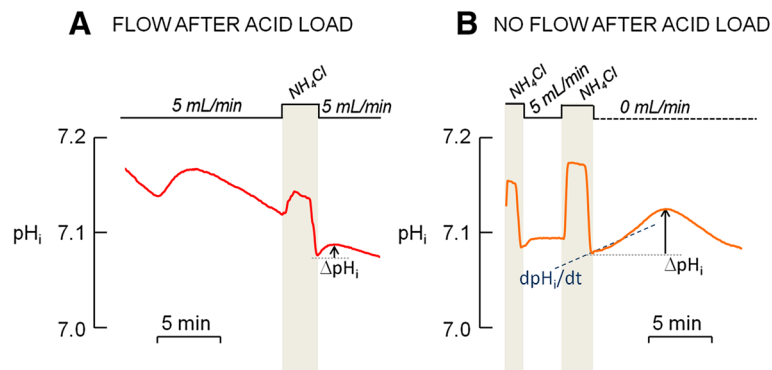


Fig. 2 Changes in intracellular pH (pHi) of osteoclasts. The pHi of primary osteoclasts labeled with the pH-sensitive dye BCECF-AM (12 μ M) was monitored along time in order to evaluate the H⁺ secretion under flow and no-flow conditions after the NH₄Cl prepulse, which causes an acid load to the cells. Experiments were performed in the absence HCO₃⁻ to inhibit base transporters. **a.** Flowing standard HEPES-buffered solution (5 mL/min) after acid loading is related to a discrete H⁺ secretion and a small ΔpH_i . **b.** Non-flowing HEPES-buffered solution (0 mL/min) after acid loading is related to a transient H⁺ secretion and a higher ΔpH_i than in flow condition

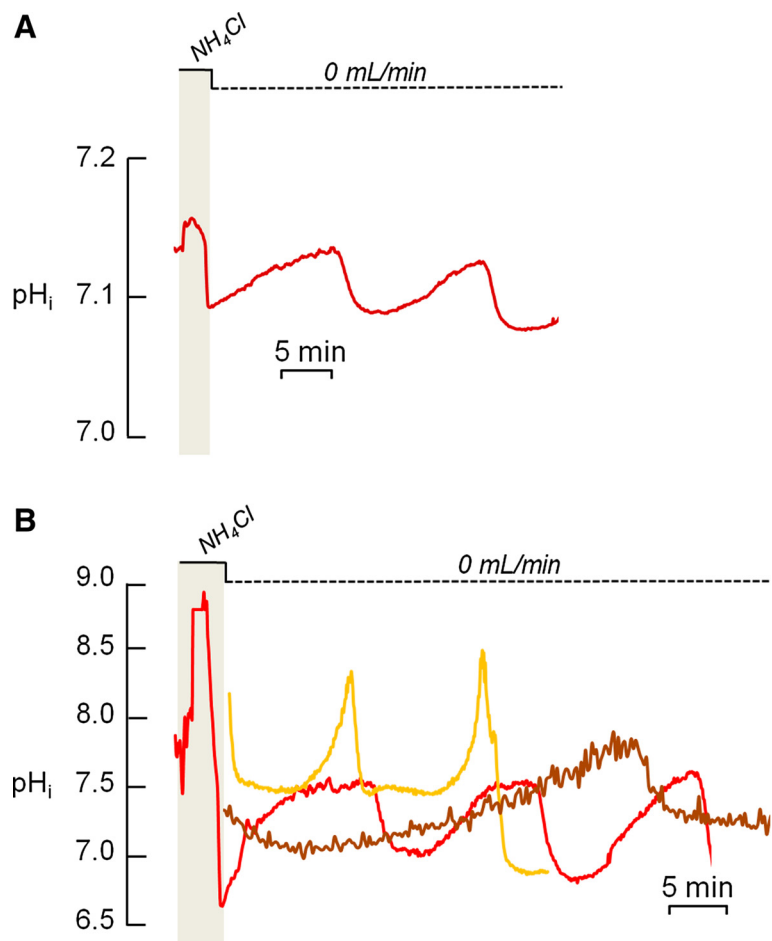


Fig. 3 Changes in intracellular pH (pHi) of osteoclasts. The pHi of primary osteoclasts labeled with the pH-sensitive dye BCECF-AM (12 μ M) was monitored along time in order to evaluate the H⁺ secretion. **a.** Primary osteoclast exhibit rhythmic fluctuations in pHi after the NH₄Cl prepulse under non-flowing standard HEPES-buffered solution. **b.** Different patterns of pHi oscillations are observed in the primary osteoclasts under non-flowing standard HEPES-buffered solution, with variations in period and amplitude in cycles of acidification and alkalization, in the presence or absence of NH₄Cl prepulse. Each line represents one osteoclast

observed in 92 % of experiments performed in the absence of ECF flow. Different patterns of pH_i oscillation, with different amplitudes and periods, were also observed (Fig. 3b). In osteoclasts, the period of the oscillations—the time interval between two maximum pH_i values—ranged from 12 to 45 min ($n = 35$), and the amplitude of the pH_i oscillations—the difference between the maximum and minimum pH_i in each cycle—ranged from 0.12 to 1.43 pH units, the lowest and the highest values recorded, respectively. This huge variation in capability of H^+ secretion among osteoclasts could be due to unequally expression of H^+ -transporting proteins at the plasma membrane, and can be taken as an additional evidence for the osteoclast heterogeneity regarding resorptive machinery already reported by Everts et al. in [27]. Despite the fact that osteoclasts differ from each other in values for period and amplitude of oscillations, one osteoclast analyzed individually exhibits a regular, rhythmic, oscillation, maintaining the range of pH_i fluctuation from one cycle to the following and maintaining the period of the oscillations.

The present study is not the first one to report oscillations related to pH_i in osteoclasts. In fact, an *in situ* study using microelectrodes to simultaneously measure H^+ currents and pH in the microenvironment beneath adherent osteoclasts, showed that there were pH fluctuations in that compartment [2]. Despite the methodological differences—extracellular *versus* intracellular measurements—both processes detect pH changes directly related to H^+ transported by the osteoclast.

Inhibition of H^+ -transporting proteins does not abolish the pH_i oscillation, but the absence of extracellular Cl^- modifies its patterns

The inhibition of the Na^+/H^+ exchanger by applying ECF containing zero sodium (0 Na^+) ($n = 5$), the inhibition of H^+ -ATPase by concanamycin ($n = 3$) (Fig. 4a and b) or of H^+ channels by Zn^{2+} ($n = 2$) did not disrupt or modify the oscillatory pattern of pH_i in osteoclasts. Thus, these H^+ -transporting proteins do not appear to participate in pH regulation by osteoclasts and OCL-cells.

While this may come as a surprise, this is not the first time such an observation has been reported. Grano *et al.* [28] demonstrated that in OCL-cells, Na^+/H^+ exchanger inhibition did not completely eliminate the ability of these cells to regulate pH_i . Another study also showed that total replacement of extracellular Na^+ had no effect on H^+ transport in inside-out vesicles derived from the ruffled border of avian osteoclasts [29]. Furthermore, it has been reported that 40 % of osteoclasts containing at least 10 nuclei facilitate pH recovery from acid load through H^+ -ATPase, without any participation from the Na^+/H^+ exchanger [30]. While this latter observation is in contrast to our observed results with concanamycin, our data is in accordance with Nordström *et al.* [31],

which reported that in the absence of HCO_3^- , pH_i regulation by H^+ -ATPase is negligible in cells under physiological pH.

The removal of extracellular Cl^- ($n = 3$) or application of NPPB ($n = 3$), inhibitor of chloride channels, also did not abolish the pH_i oscillations (Fig. 4c and d). However, it should be noted that the removal of extracellular Cl^- resulted in noticeable difference in the oscillation pattern ($n = 3$) (Fig. 4d). In control solution, the difference between two maximum values of pH_i ($\text{pH}_i \text{ max}$; Fig. 4e) in two consecutive cycles was -0.03 ± 0.004 , whilst in the absence of extracellular Cl^- , the difference between two consecutive values of $\text{pH}_i \text{ max}$ raised to -0.10 ± 0.007 , indicating a compromised ability to secrete H^+ . The mean time of intracellular acidification (T; Fig. 4e) was ~ 6 min under control conditions and was increased to ~ 9 min in the absence of extracellular Cl^- , which may be related to a decreased ability to secrete H^+ . The mean time of intracellular alkalinization (t; Fig. 4e) was ~ 15 min under control conditions and was reduced to ~ 12 min in the absence of extracellular Cl^- , thus shortening the time of H^+ secretion by 20 %. In control solution, the difference between two minimum values of pH_i ($\text{pH}_i \text{ min}$; Fig. 4e) in two consecutive cycles was -0.01 ± 0.007 , whilst in the absence of extracellular Cl^- , the difference between two consecutive values of $\text{pH}_i \text{ min}$ raised to -0.12 ± 0.003 , indicating further intracellular acidification. Lastly, the mean rate of intracellular alkalinization (dpH_i/dt ; Fig. 4e) was 0.004 pH units/min under control conditions versus 0.0008 pH unit/min in the absence of extracellular Cl^- , which corresponds to a 5-fold decrease in the H^+ secretion rate. Since the experiments were performed in the absence of HCO_3^- and because the variations in pH_i and dpH_i/dt are related to H^+ transport, the reduced ability to secrete H^+ in the absence of extracellular Cl^- could be due to a impaired exchange of external Cl^- for internal H^+ by a Cl^-/H^+ exchanger.

The importance of Cl^- transporting proteins (channels) in bone resorption emerged when Blair *et al.* [29] demonstrated that in avian osteoclasts the H^+ secretion through H^+ -ATPase was dependent on an anion conductance, and non-linearly related to the external concentration of Cl^- . In fact several Cl^- -transporting proteins are expressed at the osteoclast ruffled border in different species, including CIC-3, CIC-7, and CLIC5 [32–34]. Cl^- secretion through these proteins would dissipate the transmembrane potential generated by H^+ -ATPase activity [35].

According to my hypothesis, the absence of extracellular Cl^- reduces the exchange of Cl^- by intracellular H^+ , therefore reducing H^+ secretion, without any participation of H^+ -ATPase. This is supported by data demonstrating that the knockdown of CIC-7 expression by interfering RNA reduces the ability of lysosomal acidification *in vivo*, concluding that CIC-7 is the most important protein for

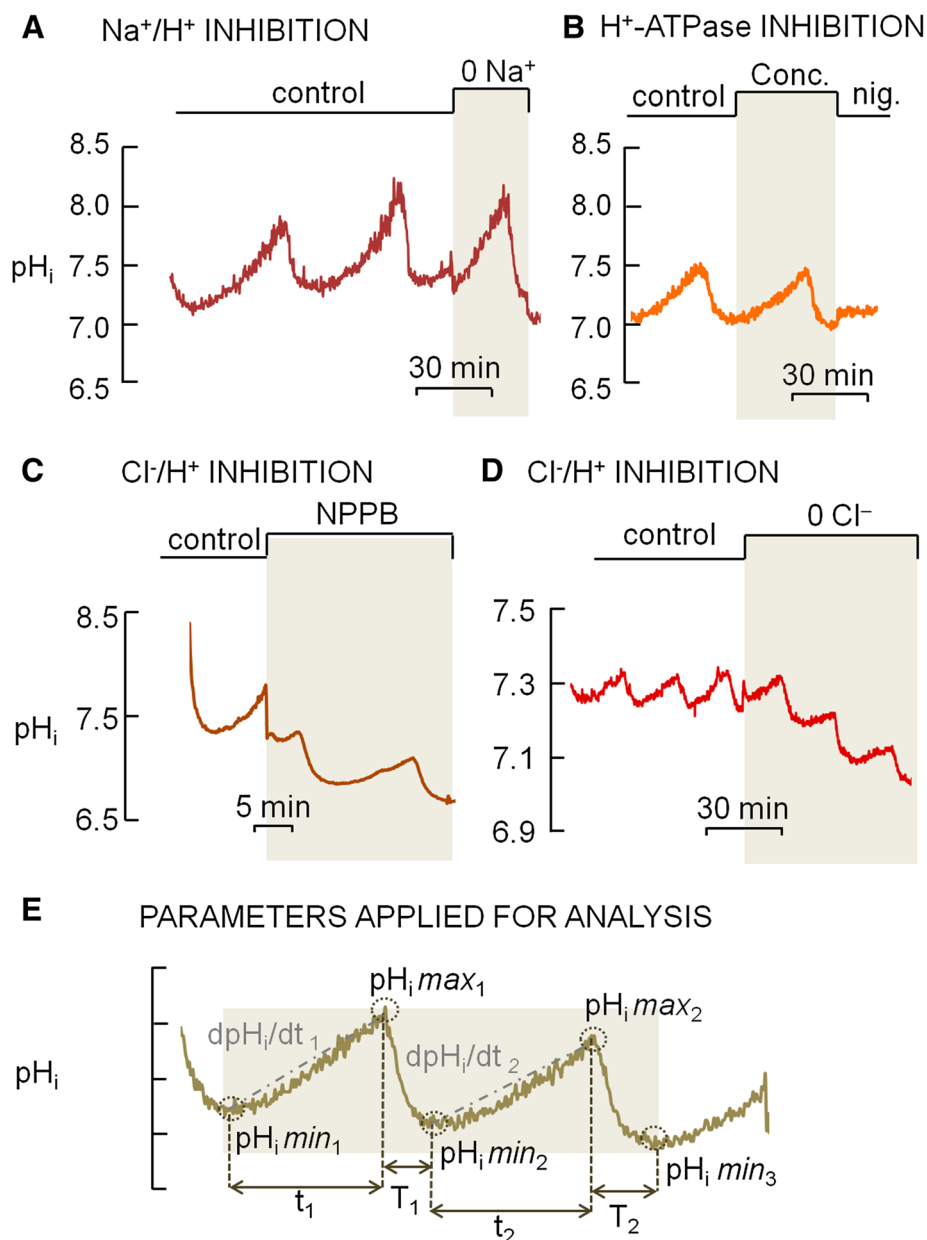


Fig. 4 Effect of inhibitors of H⁺-secreting proteins in the oscillating intracellular pH (pH_i) of primary osteoclasts under non-flowing standard HEPES-buffered solution. **a.** The pH_i oscillations were not abolished by applying a zero Na⁺ solution (0 Na⁺), inhibitor of Na⁺/H⁺ exchanger. **b.** The pH_i oscillations were not abolished in the presence of concanamycin (Conc.), inhibitor of H⁺-ATPase. (Nig. = nigericin clamps pH_i at 7.0). **c.** The pH_i oscillations were not abolished in the presence of NPPB, inhibitor of Cl⁻ channels. **d.** The pH_i oscillations were not abolished by applying a zero Cl⁻ solution (0 Cl⁻), inhibitor of Cl⁻ transporting proteins; however there is a noticeable and progressive intracellular acidification from one cycle to the next following the removal of extracellular Cl⁻ (0 Cl⁻). **e.** Parameters applied for the analyses of the oscillating pH_i

lysosomal acidification [36]. It is also important to consider that bone ECF is not in equilibrium with the bulk extracellular fluid, but instead there is evidence of such a compartmentalization [37]. Higher concentrations of Cl⁻ in bone ECF compared to other extracellular compartments in the body can be taken as evidence that an important physiological role for Cl⁻ exists in bone.

Taken together, the literature and my results provide evidence supporting the following assertion: ClC-7 may itself secrete H⁺ through the ruffled border at the bone-osteoclast interface. This new functional role for ClC-7 presented here is in contrast with the function of charge dissipation, in which Cl⁻ ions would leave the cell in parallel with protons transported by H⁺-ATPase [38].

On the other hand, my hypothesis is in accordance with the first documented biophysical properties of chloride-transporting proteins located at the ruffled border, which was shown to be outward rectifying channels [34]. My proposal of a direct role of ClC-7 in secreting H^+ at the ruffled border is also in accordance with studies showing that the resorption lacuna of cultured osteoclasts lacking ClC-7 is less acidic [38].

Fluid flow abolishes pH_i oscillations and causes intracellular acidification, but the cessation of flow coincides with the onset of the H^+ secretion

As previously described in this work, osteoclasts and OCL-cells exhibited spontaneous pH_i oscillations in the absence of ECF flow, even in the presence of inhibitors of H^+ secreting proteins. However, when the ECF was applied at 5 mL/min—value in accordance to the normal intrasosseous blood flow rate range reported by Laroche (2002) [39]—the oscillations of pH_i were completely abolished in both osteoclasts and OCL-cells. Furthermore, H^+ secretion after the acid load was absent or brief and not sustained, in both osteoclasts and osteoclast-like cells (OCL-cells) (Fig. 2a).

In contrast to the results obtained under no flow conditions, with a flow rate of 5 mL/min the cells exhibited progressive intracellular acidification. However, upon the

stoppage of extracellular fluid flow H^+ secretion commences, resulting alkalization in osteoclasts ($n = 6$) and OCL cells ($n = 20$) (Fig. 5) and the previously described oscillatory pattern resumes (Fig. 6a). Furthermore, re-applying flow—after a period of pH_i oscillation—disrupts the rhythmic fluctuations in pH_i displayed by the osteoclasts ($n = 4$) and OCL-cells ($n = 20$) observed under no flow conditions (Fig. 6b). Despite the fact that primary osteoclasts and OCL-cells may have differences concerning phenotype, the similar effect of extracellular fluid flow observed in both cells indicate that the mechanisms related to the effect of fluid in H^+ secretion properties and pH_i regulation are preserved in OCL-cells.

This regulation of H^+ transport by fluid dynamics of ECF may be relevant during BMU assembly, whereby the canopy over the site to be resorbed isolates local conditions from that in the bulk ECF. In addition, it provides new evidence for a role to intrasosseous circulation in regulating the events occurring in the BMU, as highlighted by Parfitt (2000) [40]. The modulation of osteoclast H^+ secretion by the fluid dynamics here described, along with the regulation of osteoclast function by hypoxia described by Arnett *et al.* (2003) [41], may also serve as regulatory mechanisms for bone resorption in situations where there is stasis or a disruption of the blood supply, such as that occurring in

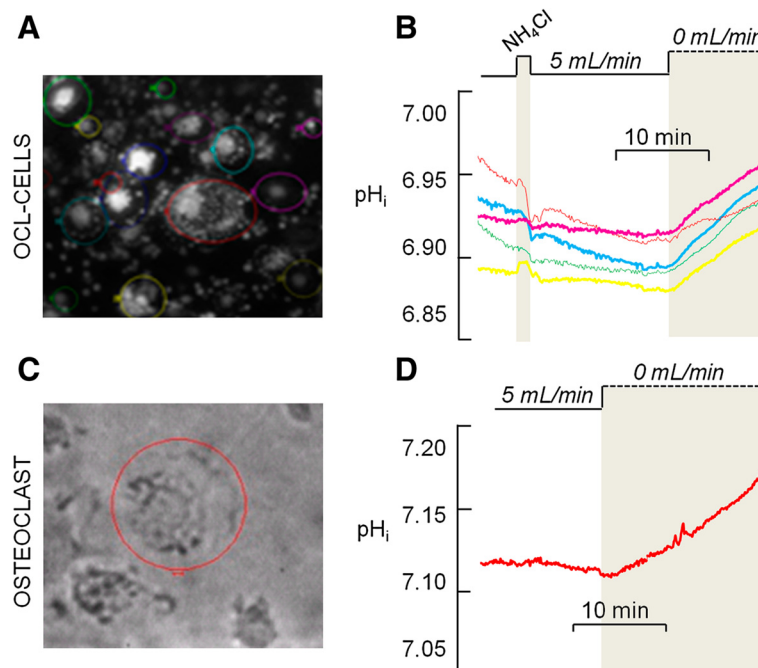


Fig. 5 **a.** Emitted fluorescence of BCECF-loaded osteoclast-like cells (OCL-cells) individualized in the area defined by the colored circle line by using the MetaFluor 7.1 software **(b).** pH_i of OCL-cells shown in **(a)**. Each line represents one OCL-cell. At the time the flow is stopped (dashed line), pH_i become progressively more alkaline, thus indicating H^+ secretion since the standard HEPES-buffered solution does not contain HCO_3^- . **c.** Transmitted light image of selected osteoclast. **d.** pH_i of the osteoclast shown in **c**. At the time the flow is stopped (dashed line), pH_i become progressively more alkaline, thus indicating H^+ secretion since the standard HEPES-buffered solution does not contain HCO_3^-

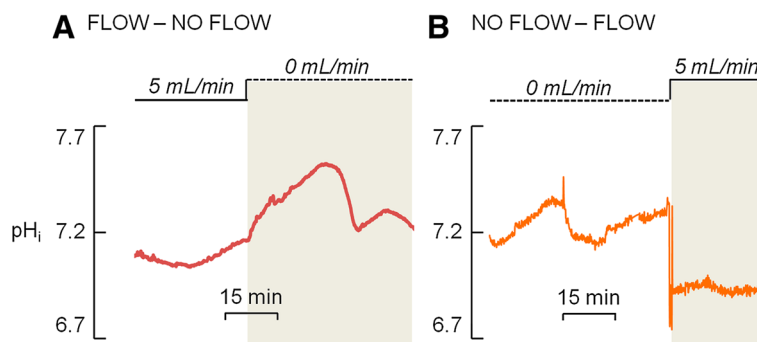


Fig. 6 Osteoclast intracellular pH (pH_i). **a.** The transition from a period of continuous flow (5 mL/min) to a period of non-flowing (0 mL/min) standard HEPES-buffered solution causes pH_i oscillation. **b.** Inversely, the transition from a period of non-flowing (0 mL/min) standard HEPES-buffered solution to a period of continuous flow (5 mL/min) abolishes pH_i oscillation

bone fractures or in compression sites during orthodontic treatments.

Conclusions

In summary, I observed that in the presence of ECF flow, osteoclasts and OCL-cells appear to be unable to secrete H^+ and the pH_i continuously falls. In contrast, when extracellular fluid flow is stopped the cells begin to secrete H^+ and pH_i increases as extracellular pH reduces. The oscillations in osteoclast pH_i could be due to the reversion of ion fluxes (i.e. H^+ and Cl^-) across the osteoclast plasma membrane. Therefore, it is hypothesized that extracellular Cl^- alters the rate of H^+ secretion by the exchange of Cl^- and H^+ mediated by CIC-7 at the ruffled border. This provides novel evidence for the participation of CIC-7 in osteoclast H^+ secretion and bone resorption.

My data highlight, for the first time, that flow and Cl^- content of the ECF both modulate H^+ secretion by the osteoclast, independently of H^+ -ATPase, and suggest different and potentially more important roles for CIC-7 in bone resorption than previously recognized. Further studies must be performed in order to better understand these aspects of osteoclast biology.

Methods

Isolation of osteoclasts from long bones

Mature osteoclasts were collected under aseptic conditions from the long bones of newborn Wistar rats. All experimental procedures were performed in accordance with the guidelines of the Standing Committee on Animal Research of the University of São Paulo (Protocol No. 090-35/02). The removed bones were washed with cold α -MEM (Gibco, Grand Island, NE), minced, and cells were detached by repeated pipetting. The debris was allowed to sediment for 30 s, and then the cell suspension was collected. Cells were placed on plastic coverslips at a density of 5×10^6 cells/mL in 300 mOsm/L α -MEM containing

20 IU/L penicillin G, 20 μ g/L streptomycin and 0.05 μ g/L amphotericin B, 10 % of fetal calf serum and 20 mM N-2-hydroxyethylpiperazine-N'-2-ethanesulfonic acid (HEPES). Cells were kept in a CO_2 incubator (Lab-Line Instruments, Melrose Park, IL) at 5 % CO_2 , pH 7.4 at 37 °C, for at least two hours before experiments. Mature osteoclasts collected from long bones were selected based on their morphology, using phase contrast microscopy (Olympus IX70, Tokyo, Japan). After selected experiments, further confirmation of the cell phenotype was performed using tartrate resistant acid phosphatase (TRAP) staining kit (Sigma-Aldrich, St. Louis, MO) or by immunocytochemistry using an antibody against the calcitonin receptor (Abcam, Cambridge, UK), a specific marker for osteoclasts (Fig. 7).

Generation of OCL-cells in vitro

For differentiation of precursor cells in OCL-cells, marrow cells were collected from long bones of 6 to 8 weeks-old Wistar rats. All experimental procedures were performed in accordance with the guidelines of the Standing Committee on Animal Research of the University of São Paulo (Protocol No. 090-35/02). Osteoclast-like cells were generated as described by Arnett *et al.* [41] with modifications; briefly, by using 50 ng/mL of recombinant mouse macrophage colony stimulating factor (rmM-CSF) (R&D Systems, Minneapolis, MN) and 10 ng/mL of recombinant mouse receptor activator of nuclear factor kappa B ligand (rmRANK-L) (R&D Systems). Cells were maintained in 300 mOsm/L α -MEM containing 20 IU/L penicillin G, 20 μ g/L streptomycin and 0.05 μ g/L of amphotericin B, 10 % of fetal calf serum and 20 mM HEPES on plastic coverslips, in a CO_2 incubator (Lab-Line Instruments, India) at 5 % CO_2 , pH 7.4 at 37 °C, for up to 7 days. The culture medium was changed every 3 or 4 days.

Experimental solutions and chemicals

All pH_i experiments were performed in the absence of $NaHCO_3$, in order to avoid activity of proteins involved in

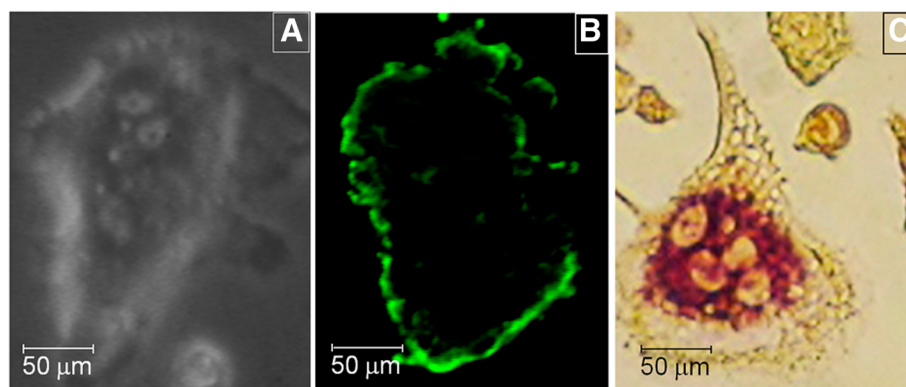


Fig. 7 Mature primary osteoclasts were selected based on their morphology, using phase contrast optic system (Olympus IX70; 200 X) (a). In some experiments, it was performed further confirmation of the cell phenotype by immunofluorescence using antibody against calcitonin receptor (CTR) (confocal microscope Zeiss LSM510; 200 X), a specific marker of osteoclasts (b), or by cytochemistry for tartrate resistant acid phosphatase (TRAP) (TRAP kit, Sigma, USA; 200 X) (c)

base transport (i.e. $\text{Na}^+\text{-HCO}_3^-$ cotransporters). The composition of experimental solutions is shown as additional data. The experimental solutions were maintained at 37 °C regardless of flow conditions.

Concanamycin (Sigma-Aldrich, St. Louis, MO), the H^+ -ATPase inhibitor, was used at a final concentration of 100 mM [5]. NPPB [5-Nitro-2-(3-phenylpropylamino) benzoic acid] (Tocris Bioscience, Bristol, UK), the chloride channel inhibitor, was used at a final concentration of 100 μM [42]. ZnCl_2 (Sigma-Aldrich, St. Louis, MO), the proton channel inhibitor, was used at a final concentration of 100 μM [5].

pH_i records

The changes in cellular pH_i were monitored by measuring the change in 12 μM BCECF-AM (Molecular Probes, Eugene, OR) fluorescence on an Olympus IX70 microscope. The emitted fluorescence after excitation at 490 nm (EF 490 nm) is related to pH_i, and that emitted after excitation at 440 nm is insensitive to pH_i, but indicates dye concentration and dye loss by photobleaching during fluorescence records. The pH_i was analyzed in the presence or absence of inhibitors of H^+ ATPase, proton channels and ClC-7 ; in the presence or absence of extracellular Na^+ or Cl^- , in order to inhibit Na^+ and Cl^- -dependent mechanisms, respectively; and in the presence (5 mL/min) or absence (0 mL/min) of extracellular fluid flow. The flow and/or exchange of the ECF were controlled using syringe pump (Warner Instruments, Hamden, CT).

I also investigated the effect of acid loading the osteoclasts by exposing the cells to a solution of 20 mM NH_4Cl for 1–2 min [26]. The entry of NH_3 into the cell causes a transient alkalinization of pH_i due to the reaction of NH_3 with intracellular H^+ forming the ion NH_4^+ ; subsequently, the entry of NH_4 leads to intracellular

acidification. The replacement of NH_4Cl solution for a standard HEPES-buffered solution (pH 7.4, at 37 °C) causes the pH_i to fall abruptly. The osteoclasts ability to secrete H^+ after the acid load was investigated over time in the presence or absence of ECF flow. The rates of H^+ secretion were calculated as the linear regression— dpH_i/dt —for the two first minutes after the lowest pH_i value induced by the NH_4Cl prepulse was obtained, or for the entire period in the analysis of pH_i oscillations.

Data analyzes

The ratiometric approach was used to generate a parameter related to pH rather than dye concentration [14]. Briefly, the emitted light (above 510 nm) after excitation at 490 nm (EF490) and 440 nm (EF440) was recorded using the MetaFluor 7.1 software. The emitted fluorescence after excitation at 490 nm is sensitive to both dye concentration and pH_i, and the emitted fluorescence after excitation at 440 nm (isosbestic wavelength) is not sensitive to changes in pH_i. The fluorescence ratio values ($R = \text{EF490}/\text{EF440}$) were converted to pH_i using a calibration technique involving the use of high- $[\text{K}^+]$ /nigericin (10 μM) Invitrogen, Waltham, MA) as previously described [6]. Detailed calibration was performed on a set of cells and a single-point calibration was routinely performed at the end of all the pH_i records. Representative pH_i values of individual osteoclasts and OCL during the course of the experiments were plotted *versus* time.

Additional files

Additional file 1: Figure S1. BCECF-loaded primary osteoclast on confocal microscope Zeiss LSM 510 (200 X). The mature osteoclast was extracted from 2 days-old Wistar rat and incubated with the pH-sensitive dye BCECF-AM (12 μM) for 10 min at 37°C. **A.** Transmitted light image. **B.**

Fluorescence image of BCECF trapped in the cytosol. Note that nuclei are not fluorescent. **C.** Merged image of A. and B. (PNG 260 kb)

Additional file 2: Table S1. Rates of H^+ secretion (d pH_i /dt) for individual osteoclasts. **Table S2** Composition of experimental solutions. Values are expressed in mM. (DOCX 15 kb)

Competing interests

The authors declare that they have no competing interests.

Authors' contributions

PM conceived and performed experiments, data analysis and interpretation, and wrote the manuscript.

Acknowledgements

At the Department of Physiology and Biophysics, Institute of Biomedical Sciences, University of Sao Paulo, I would like to thank Drs. Gerhard Malnic, Margarida de Mello Aires and Raif Musa Aziz for thoughtful discussions and for making their laboratory available for experiments. At University College of London, I would like to thank to Dr. Timothy Arnett for helpful advice on osteoclast research protocols.

This work was supported by the Conselho Nacional de Desenvolvimento Científico e Tecnológico (CNPq), Brasil. PM was recipient of fellowship from CNPq (Process N. 142097/2006-3).

Received: 26 February 2015 Accepted: 28 July 2015

Published online: 15 August 2015

References

- Baron R, Neff L, Louvard D, Courtroy PJ. Cell-mediated extracellular acidification and bone resorption: evidence for a low pH in resorbing lacuna and localization of a 100-kD lysosomal membrane protein at the osteoclast ruffled border. *J Cell Biol.* 1985;101(6):2210–22.
- Silver IA, Murrills RJ, Etherington DJ. Microelectrode studies on the acid microenvironment beneath adherent macrophages and osteoclasts. *Exp Cell Res.* 1988;175(2):266–76.
- Kwon K, Wang E, Chung A, Chang N, Lee S. Effect of salinity on hydroxyapatite dissolution studied by atomic force microscopy. *J Phys Chem.* 2009;113(9):3369–72.
- Bruzzaniti A, Baron R. Molecular regulation of osteoclast activity. *Rev Endocr Metab Disord.* 2006;7(1–2):123–39.
- Nordström T, Rotstein OD, Romanek R, Asotra S, Heersche JNM, Manolson MF, et al. Regulation of cytoplasmic pH in osteoclasts. Contribution of proton pumps and a proton-selective conductance. *J Biol Chem.* 1995;270(5):2203–12.
- Ravesloot JH, Eisen T, Baron R, Boron WF. Role of Na^+/H^+ exchangers and vacuolar H^+ –pumps in intracellular pH regulation in neonatal rat osteoclasts. *J Gen Physiol.* 1995;105(2):177–208.
- Morethson P, Mello-Aires M. Acid extrusion and intracellular pH regulation in primary osteoclasts cultured on glass. *Calc Tissue Int.* 2008;82:S131–2.
- Morethson P. Osteoclast proton transport modulation by fluid flow. *Bone.* 2011;48:S135.
- Gamero P, Borel O, Byrjalsen I, Ferreras M, Drake FH, McQueney MS, Foged NT, Delmas PD, Delaissé JM. The collagenolytic activity of cathepsin K is unique among mammalian proteinases. *J Biol Chem.* 1998;273:32347–52.
- Vaananen HK, Karhukorpi EK, Sundquist K, Wallmark B, Roininen I, Hentunen T, et al. Evidence for the presence of a proton pump of the vacuolar H^+ -ATPase type in the ruffled borders of osteoclasts. *J Cell Biol.* 1990;111(3):1305–11.
- Kelly ME, Dixon SJ, Sims SM. Outwardly rectifying chloride current in rabbit osteoclasts is activated by hyposmotic stimulation. *J Physiol.* 1994;475:377–89.
- Lee SH, Kim T, Park ES, Yang S, Jeong D, Choi Y, et al. NHE10, an osteoclast-specific member of the Na^+/H^+ exchanger family, regulates osteoclast differentiation and survival [corrected]. *Biochem Biophys Res Commun.* 2008;369(2):320–6.
- Bouyer P, Sakai H, Itokawa T, Kawano T, Fulton CM, Boron WF, et al. Colony-stimulating factor-1 increases osteoclast intracellular pH and promotes survival via the electroneutral Na^+/HCO_3^- cotransporter NBCn1. *Endocrinology.* 2007;148(2):831–40.
- Bevensee MO, Boron WF. Control of Intracellular pH. In: Alpern RJ, Caplan M, Moe OW, editors. *Seldin and Giebisch's The Kidney: Physiology & Pathophysiology.* Fifth Edition. New York: Elsevier Inc; 2013.
- Parker MD, Boron WF. The Divergence, Actions, Roles, and Relatives of Sodium-Coupled Bicarbonate Transporters. *Physiol Rev.* 2013;93:803–959.
- Riihonen R, Nielsen S, Vaananen HK, Laitala-Leinonen T, Kwon TH. Degradation of hydroxyapatite in vivo and in vitro requires osteoclastic sodium-bicarbonate cotransporter NBCn1. *Matrix Biol.* 2010;29:287–94.
- Teti A, Blair HC, Teitelbaum SL, Kahn AJ, Koziol C, Konsek J, et al. Cytoplasmic pH regulation and chloride/bicarbonate exchange in avian osteoclasts. *J Clin Invest.* 1989;83(1):227–33.
- Wu J, Glimcher LH, Aliprantis AO. HCO_3^-/Cl^- anion exchanger SLC4A2 is required for proper osteoclast differentiation and function. *Proc Natl Acad Sci U S A.* 2008;105:16934–9.
- Supanchart C, Kornak U. Ion channels and transporters in osteoclasts. *Arch Biochem Biophys.* 2008;473(2):161–5.
- Sims NA, Martin TJ. Coupling the activities of bone formation and resorption: a multitude of signals within the basic multicellular unit. *BoneKey Reports.* 2014;3:481.
- Cowin SC, Moss-Salentijn L, Moss ML. Candidates for the mechanosensory system in bone. *J Biomech Engineering.* 1991;113(2):191–7.
- Salter DM, Robb JE, Wright MO. Electrophysiological responses of human bone cells to mechanical stimulation: evidence for specific integrin function in mechanotransduction. *J Bone Miner Res.* 1997;12(7):1133–41.
- Noble BS, Peet N, Stevens HY, Brabbs A, Mosley JR, Reilly GC, et al. Mechanical loading: biphasic osteocyte survival and targeting of osteoclasts for bone destruction in rat cortical bone. *Am J Physiol Cell Physiol.* 2003;284(4):C934–43.
- Aguirre JJ, Plotkin LI, Stewart SA, Weinstein RS, Parfitt AM, Manolagas SC, et al. Osteocyte apoptosis is induced by weightlessness in mice and precedes osteoclast recruitment and bone loss. *J Bone Miner Res.* 2006;21(4):605–15.
- Tan SD, de Vries TJ, Kuijpers-Jagtman AM, Semeins CM, Everts V, Klein-Nulend J. Osteocytes subjected to fluid flow inhibit osteoclast formation and bone resorption. *Bone.* 2007;41(5):745–51.
- Boron WF, De Weer P. Intracellular pH transients in squid giant axons caused by CO_2 , NH_3 , and metabolic inhibitors. *J Gen Physiol.* 1976;67(1):91–112.
- Everts V, de Vries TJ, Helfrich MH. Osteoclast heterogeneity: lessons from osteopetrosis and inflammatory conditions. *Biochim Biophys Acta.* 2009;1792(8):757–65.
- Grano M, Faccio R, Colucci S, Paniccia R, Baldini N, Zallone AZ, et al. Extracellular Ca^{2+} sensing is modulated by pH in human osteoclast-like cells in vitro. *Am J Physiol.* 1994;267:C961–8.
- Blair HC, Teitelbaum SL, Tan HL, Koziol CM, Schlesinger PH. Passive chloride permeability charge coupled to H^+ -ATPase of avian osteoclast ruffled membrane. *Am J Physiol.* 1991;260:C1315–24.
- Lees RL, Heersche JN. Differences in regulation of pH(i) in large ($>=10$ nuclei) and small ($<=5$ nuclei) osteoclasts. *Am J Physiol Cell Physiol.* 2000;279(3):C751–61.
- Nordström T, Shrode LD, Rotstein OD, Romanek R, Goto T, Heersche JN, et al. Chronic extracellular acidosis induces plasmalemmal vacuolar type H^+ ATPase activity in osteoclasts. *J Biol Chem.* 1997;272(10):6354–60.
- Schlesinger PH, Blair HC, Teitelbaum SL, Edwards JC. Characterization of the osteoclast ruffled border chloride channel and its role in bone resorption. *J Biol Chem.* 1997;272:18636–43.
- Zhao H, Ross FP. Mechanisms of osteoclastic secretion. *Ann N Y Acad Sci.* 2007;1116:238–44.
- Okamoto F, Kajiya H, Toh K, Uchida S, Yoshikawa M, Sasaki S, et al. Intracellular ClC-3 chloride channels promote bone resorption in vitro through organelle acidification in mouse osteoclasts. *Am J Physiol Cell Physiol.* 2008;294(3):C693–701.
- Carraro-Lacroix LR, Lessa LM, Fernandez R, Malnic G. Physiological implications of the regulation of vacuolar H^+ -ATPase by chloride ions. *Braz J Med Biol Res.* 2009;42(2):155–63.
- Graves AR, Curran PK, Smith CL, Mindell JA. The Cl^-/H^+ antiporter ClC-7 is the primary chloride permeation pathway in lysosomes. *Nature.* 2008;453(7196):788–92.
- Green J, Kleeman CR. Role of bone in regulation of systemic acid-base balance. Editorial Review. *Kidney Int.* 1991;39:9–26.
- Kornak U, Kasper D, Bösl MR, Kaiser E, Schweizer M, Schulz A, et al. Loss of the ClC-7 chloride channel leads to osteopetrosis in mice and man. *Cell.* 2001;104(2):205–15.
- Laroche M. Intraosseous circulation from physiology to disease. *Joint Bone Spine.* 2002;69(3):262–9. Review.

40. Parfitt AM. The mechanism of coupling: a role for the vasculature. *Bone*. 2000;26(4):319–23.
41. Arnett TR, Gibbons DC, Utting JC, Orriss IR, Hoebertz A, Rosendaal M, et al. Hypoxia is a major stimulator of osteoclast formation and bone resorption. *J Cell Physiol*. 2003;196(1):2–8.
42. Okamoto F, Kajiji H, Fukushima H, Jimi E, Okabe K. Prostaglandin E2 activates outwardly rectifying Cl⁻ channels via a cAMP-dependent pathway and reduces cell motility in rat osteoclasts. *Am J Physiol Cell Physiol*. 2004;287(1):C114–24.

**Submit your next manuscript to BioMed Central
and take full advantage of:**

- Convenient online submission
- Thorough peer review
- No space constraints or color figure charges
- Immediate publication on acceptance
- Inclusion in PubMed, CAS, Scopus and Google Scholar
- Research which is freely available for redistribution

Submit your manuscript at
www.biomedcentral.com/submit

