

Cannabidiol causes endothelium-dependent vasorelaxation of human mesenteric arteries via CB₁ activation

Christopher P. Stanley, William H. Hind, Cristina Tufarelli, and Saoirse E. O'Sullivan*

School of Medicine, University of Nottingham, Royal Derby Hospital, Derby DE22 3DT, UK

Received 4 September 2014; revised 20 May 2015; accepted 12 June 2015; online publish-ahead-of-print 19 June 2015

Time for primary review: 41 days

Aims The protective effects of cannabidiol (CBD) have been widely shown in preclinical models and have translated into medicines for the treatment of multiple sclerosis and epilepsy. However, the direct vascular effects of CBD in humans are unknown.

Methods and results Using wire myography, the vascular effects of CBD were assessed in human mesenteric arteries, and the mechanisms of action probed pharmacologically. CBD-induced intracellular signalling was characterized using human aortic endothelial cells (HAECs). CBD caused acute, non-recoverable vasorelaxation of human mesenteric arteries with an R_{\max} of ~40%. This was inhibited by cannabinoid receptor 1 (CB₁) receptor antagonists, desensitization of transient receptor potential channels using capsaicin, removal of the endothelium, and inhibition of potassium efflux. There was no role for cannabinoid receptor-2 (CB₂) receptor, peroxisome proliferator activated receptor (PPAR) γ , the novel endothelial cannabinoid receptor (CB_e), or cyclooxygenase. CBD-induced vasorelaxation was blunted in males, and in patients with type 2 diabetes or hypercholesterolemia. In HAECs, CBD significantly reduced phosphorylated JNK, NF κ B, p70s6 K and STAT5, and significantly increased phosphorylated CREB, ERK1/2, and Akt levels. CBD also increased phosphorylated eNOS (ser1177), which was correlated with increased levels of ERK1/2 and Akt levels. CB₁ receptor antagonism prevented the increase in eNOS phosphorylation.

Conclusion This study shows, for the first time, that CBD causes vasorelaxation of human mesenteric arteries via activation of CB₁ and TRP channels, and is endothelium- and nitric oxide-dependent.

Keywords Vasorelaxation • Human • Cannabidiol • Cannabinoid • Endothelium

1. Introduction

Numerous studies have shown that endogenous, synthetic, and plant-derived cannabinoids cause vasorelaxation of a range of animal and human arterial beds.^{1,2} The extent of cannabinoid-induced vasorelaxation and the mechanisms involved often differs between the cannabinoid compound studied, the arterial bed used, and the species employed. These mechanisms include activation of cannabinoid receptor one (CB₁), cannabinoid receptor two (CB₂), transient receptor potential vanilloid one (TRPV1), peroxisome proliferator activated receptor gamma (PPAR γ), and an as yet unidentified endothelial-bound cannabinoid receptor (CB_e).^{1,2} Vasorelaxant mediators implicated in cannabinoid-induced vasorelaxation include nitric oxide production, prostaglandin production, metabolite production, and ion channel

modulation, some of which have been shown to be coupled to receptor activation.^{1,2}

Cannabidiol (CBD) is a naturally occurring molecule found in the plant *Cannabis sativa*. Unlike the related molecule Δ^9 -tetrahydrocannabinol (THC), it does not activate CB₁ receptors in the brain, and is devoid of the psychotropic actions of THC. Indeed, CBD may antagonize the psychoses associated with cannabis abuse.³ Other receptor sites implicated in the actions of CBD include the orphan G-protein-coupled receptor GPR55, the putative endothelial cannabinoid receptor (CB_e), the transient receptor potential vanilloid 1 (TRPV1) receptor, α 1-adrenoceptors, μ opioid receptors and 5-HT_{1A} receptors.^{4,5} A CBD/THC combination (1 : 1 ratio, Sativex/Nabiximols) is currently licensed internationally in more than 20 countries for the treatment of spasticity in multiple sclerosis, and an as yet unlicensed CBD alone

* Corresponding author. Email: mbzso@nottingham.ac.uk

© The Author 2015. Published by Oxford University Press on behalf of the European Society of Cardiology.

This is an Open Access article distributed under the terms of the Creative Commons Attribution License (<http://creativecommons.org/licenses/by/4.0/>), which permits unrestricted reuse, distribution, and reproduction in any medium, provided the original work is properly cited.

product (Epidiolex) has entered an expanded access programme in children with intractable epilepsies. CBD has also received orphan designation status in treating newborn children with neonatal hypoxic-ischaemic encephalopathy.

In addition to the licensed indications, preclinical evidence suggests CBD has therapeutic potential in diseases associated with inflammation, oxidative stress, gastrointestinal disturbances, neurodegeneration, cancer, diabetes, and nociception.^{6–10} In the cardiovascular system, CBD treatment *in vivo* reduces endothelial and cardiac dysfunction in cardiomyopathy associated with diabetes.^{11,12} CBD also reduces vascular inflammation associated with endotoxemic shock,¹³ has a protective role in diabetic retinopathy,¹⁴ and is cardioprotective after coronary artery ligation.¹⁵ Furthermore, CBD reduces infarct size and increases cerebral blood flow in a mouse model of stroke when delivered either pre- or post-ischaemia through activation of 5-HT_{1A} receptors.^{16–19}

Unlike other cannabinoids, the direct vascular effects of CBD have not been fully investigated in either animal or human studies.¹ Jarai *et al.*²⁰ showed that CBD (10 $\mu\text{mol/L}$) had no effect on vascular tone in the perfused mesenteric arterial bed of mice. However, Offerlaler *et al.*²¹ reported that CBD caused a concentration-dependent near maximal vasorelaxation of isolated rat mesenteric arteries, but no mechanisms of action were probed. In the rat isolated aorta, we showed that CBD causes a time-dependant vasorelaxant response that was inhibited by antagonism of the PPAR γ receptor and inhibition of superoxide dismutase.²²

In light of the increasing evidence that CBD has beneficial effects on the cardiovascular system, and since the vascular effects of CBD remain to be characterized in human vasculature, the aim of the present study was to establish the acute vascular effects of CBD in human arteries and to underpin the pharmacology behind any potential response.

2. Methods

Ethical approval was granted by the Derbyshire Research Ethics Committee and Derbyshire Hospitals Trust Research and Development to take mesenteric tissue from patients (27 males, 10 females) undergoing colorectal surgery. Informed consent was gained in accordance with the Declaration of Helsinki. Mesenteric arteries have been extensively used to characterize the pharmacological effects of cannabinoids.¹ Excised mesenteric tissue was placed in physiological saline solution (PSS) and transported back to the lab. Arteries (701 \pm 42 μm diameter, mean \pm SEM) were dissected from mesenteric tissue, cleaned of any adherent fatty and connective tissue and cut into 2 mm segments. Artery segments were either used fresh or after overnight storage in PSS at 4°C. Overnight storage had no significant effect on the contractile or relaxation responses of mesenteric arteries (see Supplementary material online, Figure S1). Artery segments were mounted on tungsten wires on a Mulvany-Halpern myograph (Danish Myo Technology, Denmark) at 37°C in PSS solution and gassed with 5% CO₂ in O₂. Tension was measured using isometric force displacement transducers and recorded using Chart 5 Pro (ADInstruments, Oxfordshire, UK). Using normalization software, arteries were set to an internal diameter producing 90 mmHg pressure. To establish artery viability, the ability of arteries to contract to high potassium PSS (KPSS) (composition, mmol/L: NaCl 0, KCl 124, CaCl₂ · 2H₂O 2.5, MgSO₄ · 7H₂O 1.17, NaHCO₃ 25, KH₂PO₄ 1.18, C₁₀H₁₆N₂O₈ 0.027, C₆H₁₂O₆ 5.5 all dissolved in triple distilled water) or to contract to U46619 (> 5 mM), and to relax to 10 $\mu\text{mol/L}$ bradykinin (> 70% relaxation) was measured.

2.1 Experimental protocol

Viable arteries were contracted using a combination of U46619 (50–250 nmol/L) and Endothelin-1 (1–3 nmol/L). Once a stable contraction

>5 mN was achieved, cumulative concentration–response curves were constructed to CBD. CBD was added in 5-min intervals with measurements taken in the final minute of each concentration addition and expressed as percentage relaxation of pre-imposed tone. Responses were compared with ethanol-treated vehicle controls carried out in adjacent arterial segments from the same patient. To characterize mechanisms underpinning CBD-induced vasorelaxation, all interventions were compared with a CBD control–response carried out in adjacent arteries from the same patient. In some experiments, the endothelium was removed by abrasion using a human hair. A role for the involvement of nitric oxide was investigated using NG-nitro-L-arginine methyl ester (L-NAME, 300 $\mu\text{mol/L}$, present throughout). A role for cyclooxygenase (COX) was assessed using indomethacin (10 $\mu\text{mol/L}$, present throughout). A potential role for potassium channel hyperpolarization was investigated by carrying out concentration–response curves to CBD in arteries contracted using KPSS to inhibit potassium efflux. Potential cannabinoid receptor involvement in CBD-induced vasorelaxation was assessed with CB₁ antagonist (AM251, 100 nmol/L or LY320135 1 $\mu\text{mol/L}$), CB₂ receptor antagonist AM630 (100 nmol/L), or proposed endothelial cannabinoid receptor (CB_e, O1918, 10 $\mu\text{mol/L}$). Desensitization of sensory nerves was achieved via incubation (1 h) with capsaicin (10 $\mu\text{mol/L}$) followed by three washouts in PSS. In experiments to establish the potential location of the CB₁ receptor, the effects of AM251 in endothelial-denuded arteries were compared with arteries that were endothelial denuded only, arteries treated with AM251 only and CBD control arteries. In each of these protocols, there was no significant difference in the level of contraction immediately before the CBD concentration response curve.

2.2 Cell culture

Human aortic endothelial cells (PromoCell, Germany, passage 4) were grown in PromoCell Endothelial Cell Growth medium to confluence on 6-well plates and treated for 10 min with increasing concentrations of CBD, after which time the medium was removed and the cells collected in cell lysis buffer (RIPA buffer, SigmaAldrich) with phosphatase and protease inhibitors (Roche). Some experiments were performed in the presence of AM251 or capsazepine. The protein concentration of the cell lysate was measured using a BCA assay (BCA-1KT, SigmaAldrich). The levels of phosphorylated ERK/MAP kinase 1/2 (Thr185/Tyr187), Akt (Ser473), STAT3 (Ser727), JNK (Thr183/Tyr185), p70 S6 kinase (Thr412), NFkB (Ser536), STAT5A/B (Tyr694/699), CREB (Ser133), and p38 (Thr180/Tyr182) were measured in cell lysates using the Luminex® xMAP® technology using a commercially available panel (Milliplex™, 48-680MAG, Merck Millipore), and normalized to total protein content. eNOS phosphorylation was measured using a PathScan Phospho-eNOS (ser1177) sandwich ELISA according to the manufacturer's instructions (Cell Signaling Technology, USA), and was normalized to total protein content.

2.3 Reverse transcription-polymerase chain reaction

The presence of target sites of action was investigated at the mRNA level using reverse transcription followed by polymerase chain reaction (RT-PCR) under control conditions, and in the presence of a high glucose (25 mM) or high insulin (500 nM) medium for 96 h. Human astrocytes (HAs) were used as a positive control known to express all the target sites of action of interest.²³ Total RNA was extracted from HAs and HAECs using Allprep DNA/RNA kit with on column DNaseI treatment (Qiagen, Germany). Reverse transcription with and without reverse transcriptase was performed in 30 μl final volume using 3 μg of total RNA and random primers with the High Capacity cDNA Reverse Transcription Kit (Life Technologies, UK) according to the manufacturer's instructions. PCRs were carried out in a final volume of 25 μl with Zymotag (ZymoResearch, USA) using 2 μl of reverse transcription product as the template. Primer pairs used to amplify 128 bp of the control house-keeping gene

Hypoxanthine-guanine PhosphoRibosylTransferase (HPRT) were from ref. 24; those for 99 bp PPAR α and 87 bp PPAR γ were from ref. 25; those for 303 bp CB1R and 365 bp CB2R were from ref. 26; those for 511 bp TRPV1 were from ref. 27; and finally the 380 bp calcitonin gene-related peptide (CGRP) receptor (CGRPR) cDNA fragment was amplified using the primers reported in ref. 28. After 5 min at 95°C, PCRs were performed for 40 cycles except those for CB2R that was carried out for 50 cycles. The cycles included 30 s at 95°C, 30 s at the annealing temperature that was optimal for each primer pair (56°C for CB1R and CB2R; 60°C for all others) and a final extension step of 30 s at 72°C. Amplification products were separated by gel electrophoresis through ethidium bromide stained 2% agarose (CB1R, CB2R, TRPV1, CGRPR) and 3% NuSieve 3:1 (PPAR α , PPAR γ and HPRT) and visualized using a Biorad Chemidoc.

2.4 Statistical analysis

Graphs represent mean percentage relaxations, with error bars representing the standard error of the mean (SEM) fit to non-linear Regression (Curve Fit) (Prism Version 6; GraphPad Software, CA, USA). *n* represents the number of arteries from patients. Comparisons between intervention and control artery segments from the same patient were made using R_{\max} (the calculated maximal response to CBD) and EC_{50} (potency of CBD) compared by Student's *t*-test. In experiments to assess the location of the CB $_1$ receptor, comparisons were made between artery segments from the same patient using one way analysis of variance (ANOVA) with Dunnetts post-hoc analysis. Significance was determined as $P < 0.05$.

2.5 Chemicals

All salts, L-NAME, indomethacin and bradykinin were supplied by Sigma Chemical Co. (Poole, UK). AM251, LY 320135, AM630, and capsaicin were purchased from Tocris (Bristol, UK). CBD was a kind gift from GW Pharmaceuticals (Wiltshire, UK). L-NAME and indomethacin were dissolved in PSS solution. CBD, bradykinin, and capsaicin were all dissolved in ethanol at 10 mM with further dilutions made in distilled water. AM251, LY320135, and AM630 were dissolved in DMSO at 10 mmol/L with further dilutions made in distilled water.

3. Results

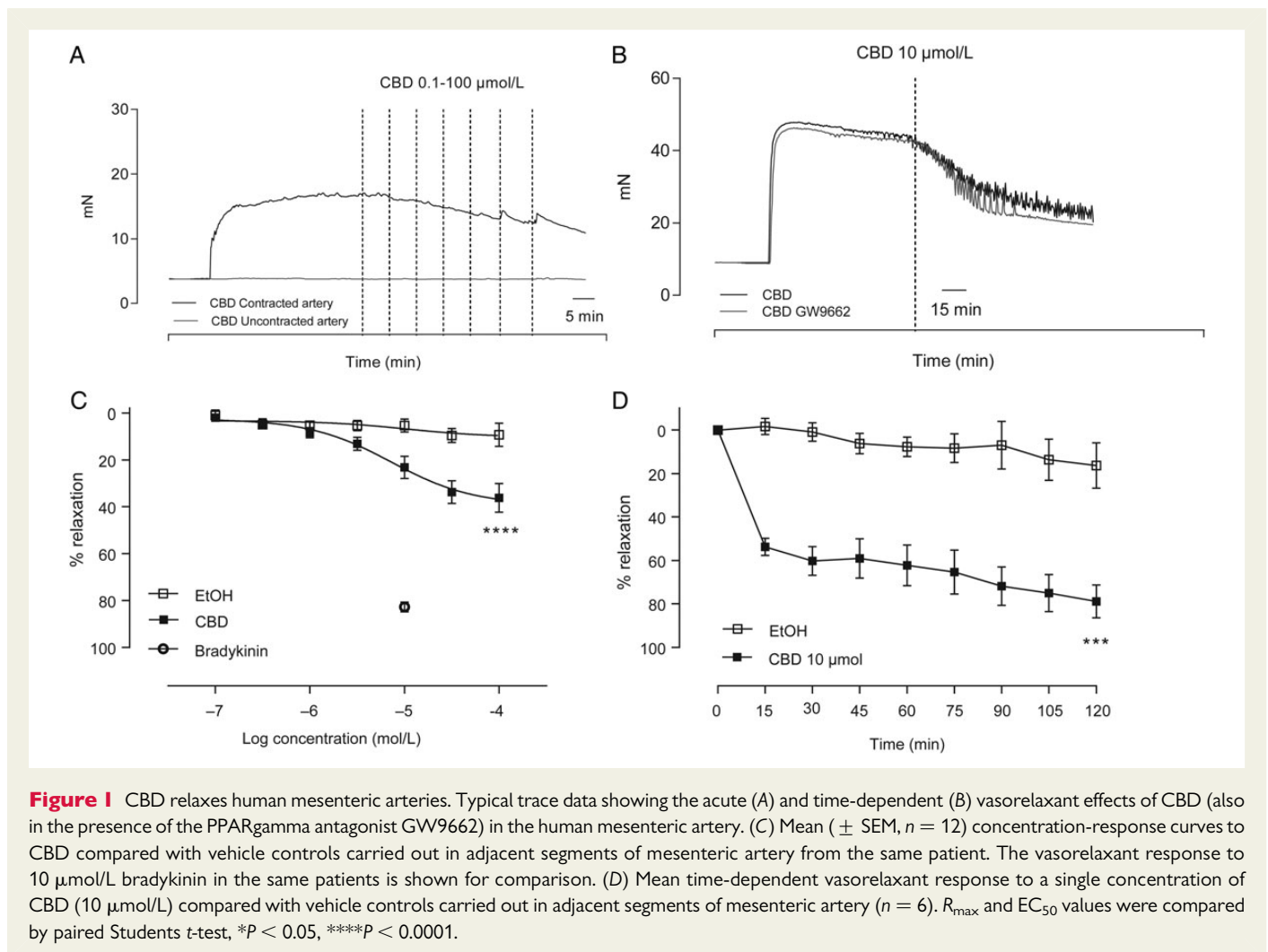
Thirty-four patients (24 males and 10 females) were recruited for this study. Twenty-seven had cancer and 7 had inflammatory bowel disorder. A summary of patient characteristics, medical history, and medications is presented in Table 1.

CBD caused vasorelaxation of pre-constricted human mesenteric arteries with an R_{\max} of around 40% vasorelaxation (R_{\max} $P < 0.0001$ compared with vehicle control, $n = 12$, Figure 1A and C, Table 2). For comparison, the vasorelaxant response to 10 $\mu\text{mol/L}$ bradykinin (83 ± 3 (mean \pm SEM) % relaxation) in the same patients is represented in Figure 1C. When added to un-contracted arteries, CBD had no effect on baseline tone ($n = 6$, representative raw trace shown in Figure 1A). In time-dependent experiments, a single concentration of 10 $\mu\text{mol/L}$ CBD caused an initial vasorelaxation of $57 \pm 4\%$ relaxation at 15 min, developing to $78 \pm 7\%$ at 120 min ($P < 0.001$, $n = 6$, Figure 1D).

Removal of the endothelium significantly reduced the potency (EC_{50}) of CBD ($P < 0.0001$, Figure 2A, Table 2). The maximum vasorelaxation to CBD also correlated positively with the endothelium-dependent bradykinin response in patients ($r = 0.394$, $P = 0.0158$, Figure 2B). Inhibition of COX activity using indomethacin had no effect on the CBD-induced vasorelaxation ($n = 6$, Figure 2C). In arteries

Table 1 Patient characteristics, diagnosis, and medications

Characteristic	Range	Mean \pm SEM
Ethnicity	34 UK white	
Male	24	
Female	10	
Age	36–82	65 \pm 2.1
Weight (kg)	52–126	76 \pm 3
BMI (kg/m ²)	17.5–36.4	27.1 \pm 0.7
Vessel size (μm)	346–1372	701 \pm 42
Bradykinin response (% relaxation)	70–109	85 \pm 1.4
Smoking habits		
Non-smokers	28	
0–10 CPD	3	
10–20 CPD	3	
Drinking habits		
< 10 units p/w	23	
10–20 units p/w	7	
> 20 units p/w	4	
Operation		
Right hemicolectomy	10	
Left hemicolectomy	7	
Sigmoid colectomy	5	
Anterior resection	10	
Abdominoperineal resection	1	
Total colectomy	1	
Reason for surgery		
Cancer	27	
Inflammatory bowel disorder	7	
Dukes Staging		
Dukes A	10	
Dukes B	9	
Dukes C	8	
Dukes D	0	
Systolic blood pressure (mm/Hg)	110–188	143 \pm 3
Diastolic blood pressure (mm/Hg)	62–101	82 \pm 1
Diabetic	10	
Heart disease	9	
Heart failure	0	
Hypercholesterolemia	15	
Hypertensive	16	
α -1-adrenoceptor antagonist	3	
ACE inhibitors	7	
AT1 receptor antagonists	2	
Beta-blockers	6	
Calcium-channel blocker	3	
Digoxin	2	
Diuretics	3	
GTN	3	
Hypoglycaemic medication	6	
Nsaid medication	14	
Statin	14	
Thiazolidinedione	1	



contracted using high potassium physiological salt solution (KPSS), CBD-induced vasorelaxation was significantly inhibited (R_{max} $P < 0.001$, $n = 5$ Figure 2D). Although incubation with L-NAME did not significantly affect the concentration-response curve to CBD (Figure 2B, Table 2), a trend for a reduction in the vasorelaxant effect of CBD was seen. Therefore, in cultured endothelial cells, we tested whether CBD affects eNOS activation and found that CBD (10 μ mol/L, 10 min) significantly increased eNOS phosphorylation at ser1177 ($P < 0.05$, $n = 9$, Figure 2F). Neither endothelium-denudation, L-NAME, or KPSS contraction affected control vasorelaxant responses (see Supplementary material online, Figure S2).

Antagonism of the CB_1 receptor using AM251 (100 nmol/L) significantly inhibited CBD-induced vasorelaxation (R_{max} $P < 0.001$, $n = 9$, Figure 3A, Table 2). To confirm this result, a second, structurally different antagonist LY320135 was used, which also significantly reduced the maximal response to CBD (CBD R_{max} 45 ± 3.5 ; CBD&LY R_{max} 30 ± 5.4 , $P < 0.05$, Table 2). Antagonism of the CB_2 receptor using AM630 (100 nmol/L) had no effect on CBD-induced vasorelaxation ($n = 8$, Figure 3C). Desensitization of TRP channels using capsaicin (10 μ mol/L) reduced CBD-induced vasorelaxation ($P < 0.0001$, $n = 7$, Figure 3B). Antagonism of the proposed CB_e receptor using O-1918 (10 μ mol/L, $n = 7$, Figure 3D) had no effect on the CBD-induced vasorelaxation. In the presence of the PPAR γ antagonist GW9662, neither

the immediate nor the time-dependent vasorelaxation was inhibited ($n = 5$, representative raw trace shown in Figure 1B). Neither AM251, LY320135, or capsaicin pre-treatment affected control vasorelaxant responses (see Supplementary material online, Figure S2).

In experiments to determine the location of the CB_1 receptor, AM251, and endothelial denudation were compared in combination and individually against control CBD responses, obtained from adjacent segments of artery from the same patients ($n = 6$, Figure 4A). AM251 alone, and AM251 plus denudation, resulted in a significant reduction in the maximal response (R_{max}) to CBD to similar extent ($P < 0.05$, Figure 4C). However, when looking at the entire concentration response curve to CBD (AUC values), the combination of AM251 and endothelial denudation had a more significant ($P < 0.01$) reduction than AM251 alone ($P < 0.05$, Figure 4B).

Across the 37 patients tested, considerable variability of control responses to CBD was observed among patients (the maximal response to CBD ranged from 2 to 75% relaxation), so *post hoc* analysis was carried out to establish any relationships between CBD responses and patient characteristics (see Supplementary material online, Table S1 and Figures 3 and 4). CBD responses were slightly reduced in males compared with females ($P = 0.0166$), but were not affected by age, BMI, or smoking status. Looking at concurrent diseases, CBD responses were reduced in patients with type-2 diabetes ($P < 0.0001$),

Table 2 The maximal vasorelaxant responses and potency of CBD in human mesenteric arteries

		Vehicle	CBD	n
	R_{max}	10.2 ± 3.5	39.2 ± 4.0 ****	
	EC_{50}	-4.98 ± 0.87	-5.14 ± 0.21	12
		Control CBD	Intervention	n
Minus endothelium	R_{max}	51.6 ± 2.8	44.6 ± 3.8	
	EC_{50}	-5.84 ± 0.18	-5.21 ± 0.18 ****	8
L-NAME	R_{max}	51.4 ± 4.9	39.1 ± 6.6	
	EC_{50}	-5.39 ± 0.26	-5.24 ± 0.35	6
Indomethacin	R_{max}	50.4 ± 4.0	55.2 ± 4.6	
	EC_{50}	-5.82 ± 0.26	-5.26 ± 0.20	6
KPSS contracted	R_{max}	49.7 ± 5.8	8.9 ± 2.4 ***	
	EC_{50}	-5.45 ± 0.30	-5.59 ± 0.73	5
AM251	R_{max}	53.9 ± 3.7	24.2 ± 4.9 ***	
	EC_{50}	-5.57 ± 0.19	-5.53 ± 0.49	9
LY320135	R_{max}	45.0 ± 3.5	30.2 ± 5.4 *	
	EC_{50}	-5.83 ± 0.24	-5.88 ± 0.54	6
AM630	R_{max}	58.7 ± 3.9	59.5 ± 5.5	
	EC_{50}	-5.56 ± 0.17	-5.48 ± 0.23	8
Capsaicin pre-treatment	R_{max}	47.7 ± 2.4	21.3 ± 3.9 ****	
	EC_{50}	-5.92 ± 0.15	-5.85 ± 0.39	7
O-1918	R_{max}	51.8 ± 2.8	43.8 ± 3.9	
	EC_{50}	-5.68 ± 0.16	-5.61 ± 0.26	7

Sigmoidal concentration-response curves to CBD were fitted using Prism and R_{max} and EC_{50} values were compared by Student's t test (with Welch's correction for groups with unequal standard deviations).

hypercholesterolemia ($P = 0.0320$), but not different in patients with cancer, heart disease, or hypertension (Supplementary material online, Figure S4). CBD responses were reduced in those taking statins ($P = 0.0042$), hypoglycaemic medication ($P < 0.0001$) and beta-blockers ($P = 0.0094$), but not those taking ACE inhibitors or NSAIDs (Supplementary material online, Figure S4).

To establish the intracellular mechanisms activated by CBD, human aortic endothelial cells were treated for 10 min with increasing concentrations of CBD. This led to a significant reduction in phosphorylated JNK (Figure 5B), NFκB (Figure 5C), p70s6 K (Figure 5G), and STAT5 (Figure 5I). CBD also significantly increased phosphorylated CREB (only at 30 μM, Figure 5A), ERK1/2 (Figure 5E), and Akt (Figure 5F). In the presence of the CB₁ receptor antagonist AM251 (100 nM) or the TRPV1 antagonist capsazepine (1 μM), CBD no longer significantly increased phosphorylated ERK1/2 (Figure 6A). The increase in phosphorylated Akt was only inhibited by AM251 (Figure 6B). The levels of phosphorylated ERK1/2 ($P = 0.0379$, $R = 0.3639$) and Akt ($P = 0.0343$, $R = 0.3749$), but none of the other intracellular signalling pathways, were positively correlated with the increase in phosphorylated eNOS levels (Figure 6C). In the presence of AM251, the increase in phosphorylated eNOS was no longer significant (Figure 6D).

As the CBD vasorelaxant responses were blunted in patients with type-2 diabetes, we carried out RT-PCR in human aortic endothelial cells (HAECs) to establish the effects of a high glucose (25 mM) or high insulin (500 nM) environment on the expression of the relevant target sites at the RNA level. Human astrocytes were used as a positive control for these target sites.²³ In HAECs, all targets (PPARα and γ, CB1R, CB2R, TRPV1, and CGRPR) were found to be present in control conditions (see Figure 7). After 96 h in either a high insulin or high

glucose medium, the expression of CB2R appeared increased, and the expression of TRPV1 and CGRPR appeared decreased (see Figure 7).

4. Discussion

This is the first study to show that CBD induces vasorelaxation in human mesenteric arteries which is dependent on CB₁ and TRP receptor activation, the endothelium, nitric oxide, and potassium channel modulation. CBD-induced vasorelaxation is reduced in males, and in patients with type-2 diabetes, hypercholesterolemia and in patients taking statins, beta blockers and hypoglycaemic medication.

We found that CBD causes half-maximal vasorelaxation with a pEC_{50} in the mid-micromolar range. Similar findings have been reported in the rat mesenteric artery, where CBD causes vasorelaxation with mid-micromolar potency, however, in the rat model CBD caused near maximal vasorelaxation. This might suggest that the efficacy of CBD is reduced in human vasculature. However, it should be noted that the present studies were performed in older patients with a variety of comorbidities and medications, while animal studies are performed in same gender, young homogenous populations. As we observed that some diseases and medications were associated with lower responses to CBD, this might account for the apparent reduced efficacy in humans. As no mechanistic studies with CBD in animal tissue have yet been reported, we cannot compare the mechanisms of action established in the present study with that from animal tissue.

The endothelium mediates vasorelaxation of the CBD analogue Abn-CBD, and this vasorelaxation is associated with activation of the CB_e receptor which is antagonized using O-1918.^{21,29} We also found that removal of the endothelium reduced responses to CBD and that CBD vasorelaxant responses correlated with bradykinin responses, indicating an endothelial site of action for CBD. However, in the presence of O-1918, CBD-induced vasorelaxation is unaltered, suggesting that the endothelial component is not CB_e. We also found that CBD responses tended to be reduced in the presence of L-NAME. To explore this further, we found that CBD significantly increased the phosphorylation of eNOS in human aortic endothelial cells, suggesting that production of NO at least partially underlies the endothelium-dependent vasorelaxant effect of CBD. The present study also reports that CBD-induced vasorelaxation is significantly inhibited in arteries contracted using high potassium solution, as has been shown for the vascular response to many cannabinoids. This suggests a predominant mechanism of CBD-induced vasorelaxation is activation of potassium channels and subsequent hyperpolarization. Given the extent of inhibition caused by KPSS, it is unlikely that potassium channel involvement is exclusive to the endothelium.

Activation of CB₁ and CB₂ receptor has been implicated in cannabinoid-induced vasorelaxation.¹ Since human vascular smooth muscle and endothelial cells express these receptors,^{30–35} and CBD has been shown to bind to these receptors at low micromolar concentrations,^{36,37} they were considered as potential mechanisms underpinning CBD-induced vasorelaxation. Antagonism of the CB₁ receptor in two separate experiments using AM251 (see Figures 3 and 4) revealed inhibition of CBD-induced vasorelaxation, suggesting CB₁ is a target for CBD. A second structurally different antagonist, LY320135, was also found to inhibit the vasorelaxant response to CBD, further implicating CB₁ receptor activation. Other authors have suggested that CBD may

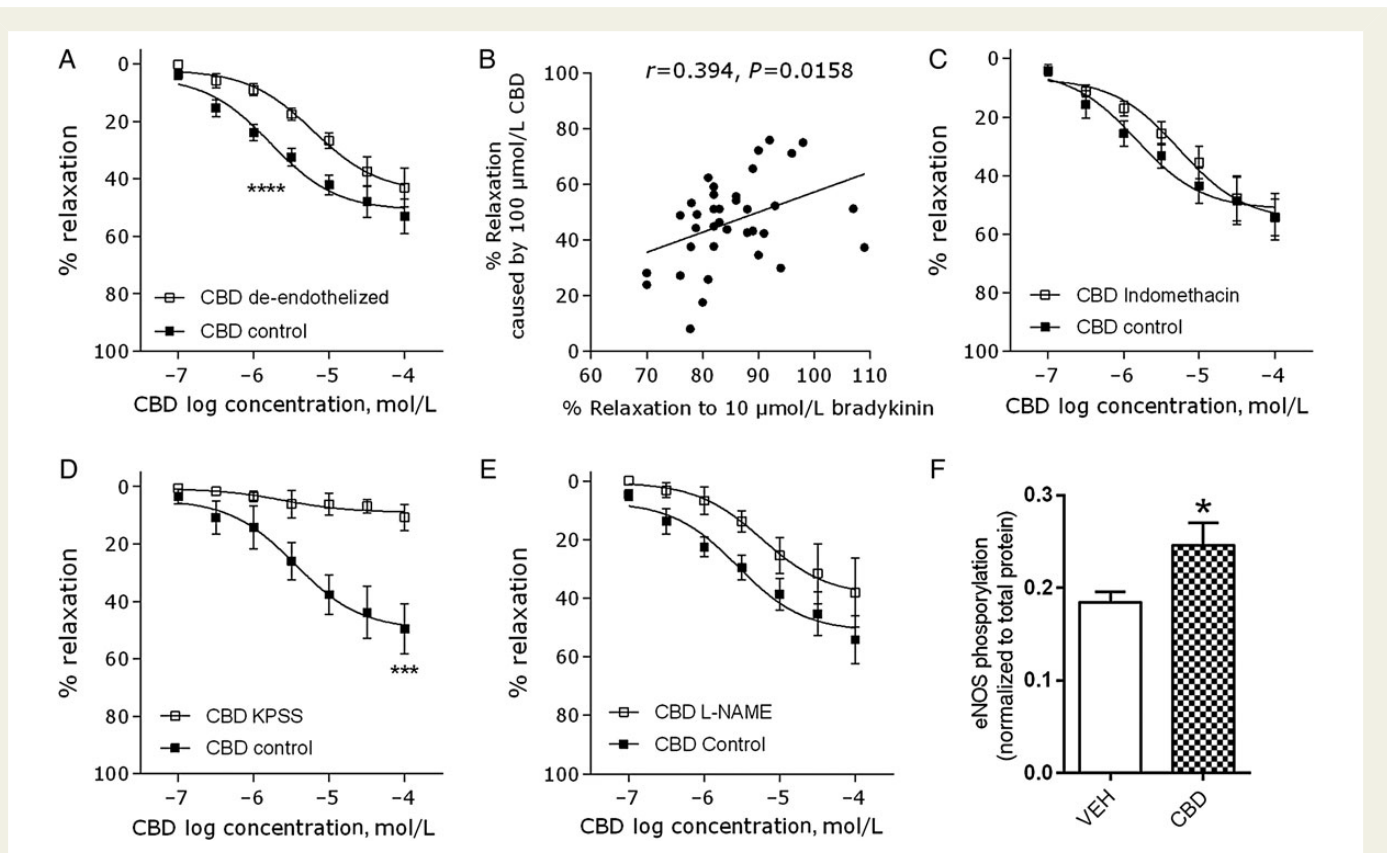


Figure 2 Mechanisms of CBD-induced relaxation of human mesenteric arteries. Mean (\pm SEM) CBD-induced vasorelaxation of human mesenteric arteries after removal of the endothelium ($n = 8$, A), in arteries incubated with L-NAME ($300 \mu\text{mol/L}$, $n = 6$, B), in the presence of the non-selective COX inhibitor indomethacin ($10 \mu\text{mol/L}$, $n = 6$, D) or in arteries contracted using a high potassium (KPSS) Krebs ($n = 5$, E). (C) Maximal responses to CBD correlated with the vasorelaxant response to the endothelium-dependent vasorelaxant bradykinin. (F) In cultured human aortic endothelial cells, CBD ($10 \mu\text{mol/L}$, 10 min) increased eNOS phosphorylation at ser1177 ($n = 9$). Control responses to CBD and interventions were carried out in adjacent segments of mesenteric artery from the same patient. R_{max} and EC_{50} values were compared by paired Students *t*-test, * $P < 0.05$, ** $P < 0.01$, *** $P < 0.001$, **** $P < 0.0001$.

have indirect actions at CB_1 through inhibition of FAAH activity or transport,³⁰ rather than direct activation. However, we have previously shown that CBD is a more efficacious vasorelaxant of human mesenteric arteries than anandamide³⁸ and that the mechanisms of action of CBD presented in the present study are different to those revealed recently in our laboratory for the endocannabinoid 2-AG.³⁹ Despite this, CBD has low affinity for CB_1 receptors so the possibility still exists that some of the actions of CBD are through inhibition of endocannabinoid degradation. Antagonism of the CB_2 receptor using AM630 did not inhibit CBD-induced vasorelaxation. This was unsurprising as CB_2 receptor activation is not commonly found to underpin the vasorelaxant effects of cannabinoids.¹

The CB_1 receptor is expressed in both human endothelial cells and vascular smooth muscle cells.^{32,35} In order to establish the location of the CB_1 receptor mediated the vasorelaxant response to CBD, we compared responses with CBD in arteries both denuded and treated with AM251 to either intervention alone. Although the reduction in the maximal response to CBD was similar in arteries treated with AM251 alone as to both interventions, the entire response to CBD (represented by the AUC data) was more significantly reduced by the combination of both interventions. We take this data to suggest that CBD acts at CB_1 located on both the endothelium and smooth muscle.

CB_1 activation has been shown to be coupled to the release of NO.⁴⁰ In support of this, we found that in human endothelial cells, CBD increased the phosphorylation of eNOS, the mRNA of CB_1R was present, and in the presence of AM251, the increase in eNOS phosphorylation by CBD was no longer significant.

Plant-derived cannabinoids are good activators of the TRPV channel family⁴¹ and CBD induces cancer cell apoptosis⁴² and anti-hyperalgaic responses to inflammatory pain^{43,44} through activation of TRPV channels. In the present study, desensitization of TRP channels by exposure to the TRPV1 agonist capsaicin inhibited CBD-induced vasorelaxation, implicating TRP activation. In the rat mesenteric artery, vasorelaxation to two chemically closely related cannabinoids, THC and cannabidiol, are also inhibited by capsaicin pre-treatment, acting via the release of the vasoactive neuropeptide calcitonin gene-related peptide (CGRP).⁴⁵ Recent work showed that CGRP vasorelaxant responses in human arteries are endothelium-independent,⁴⁶ suggesting the residual relaxation to CBD observed after endothelium-denudation is probably the TRP component of this response. However, we also observed that the increase in ERK caused by CBD in human endothelial cells was inhibited by TRPV1 antagonism, indicating that TRP activation on both the endothelium and smooth muscle cells could mediate some of the effects of CBD.

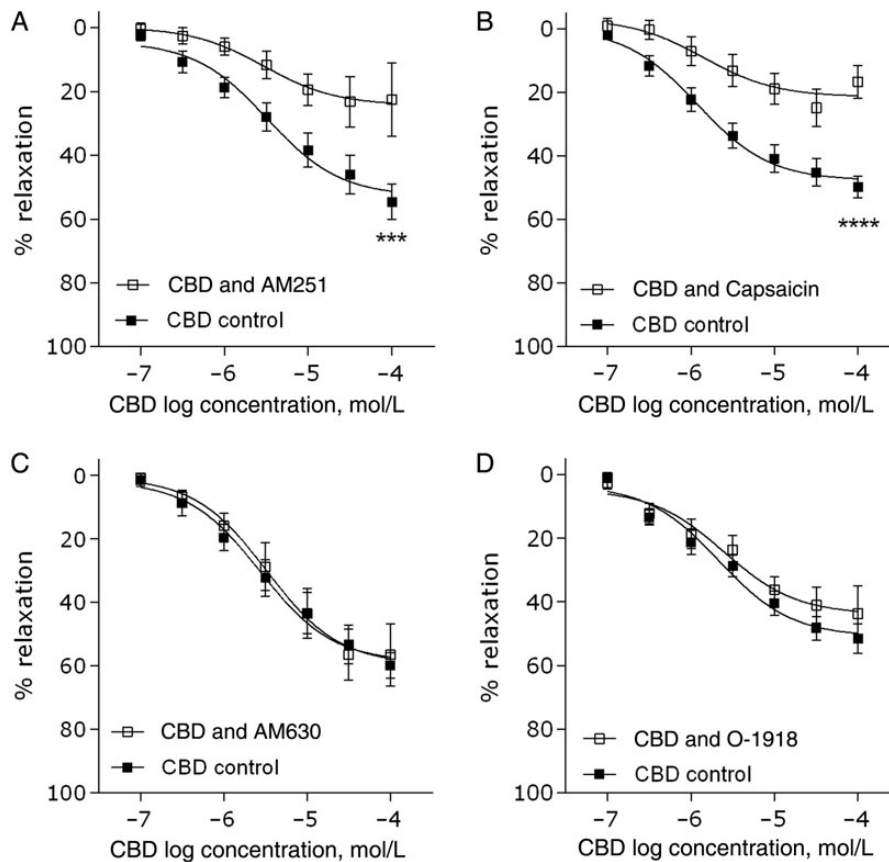


Figure 3 Target sites of action for CBD-induced relaxation of human mesenteric arteries. CBD-induced vasorelaxation of human mesenteric arteries after 10 min incubation (pre-contraction) with the CB₁ antagonist AM251 (100 nmol/L, $n = 9$, A), the CB₂ antagonist AM630 (100 nmol/L, $n = 8$, C), the proposed endothelial receptor (CB_e) antagonist O-1918 (10 μ mol/L, $n = 7$, D), or after desensitization of sensory nerves by 1 h pre-treatment with the TRPV1 agonist capsaicin (10 μ mol/L, $n = 7$, B). Control responses to CBD and interventions were carried out in adjacent segments of mesenteric artery from the same patient. R_{max} and EC_{50} values were compared by paired Students t -test, * $P < 0.05$, ** $P < 0.01$, *** $P < 0.001$, **** $P < 0.0001$.

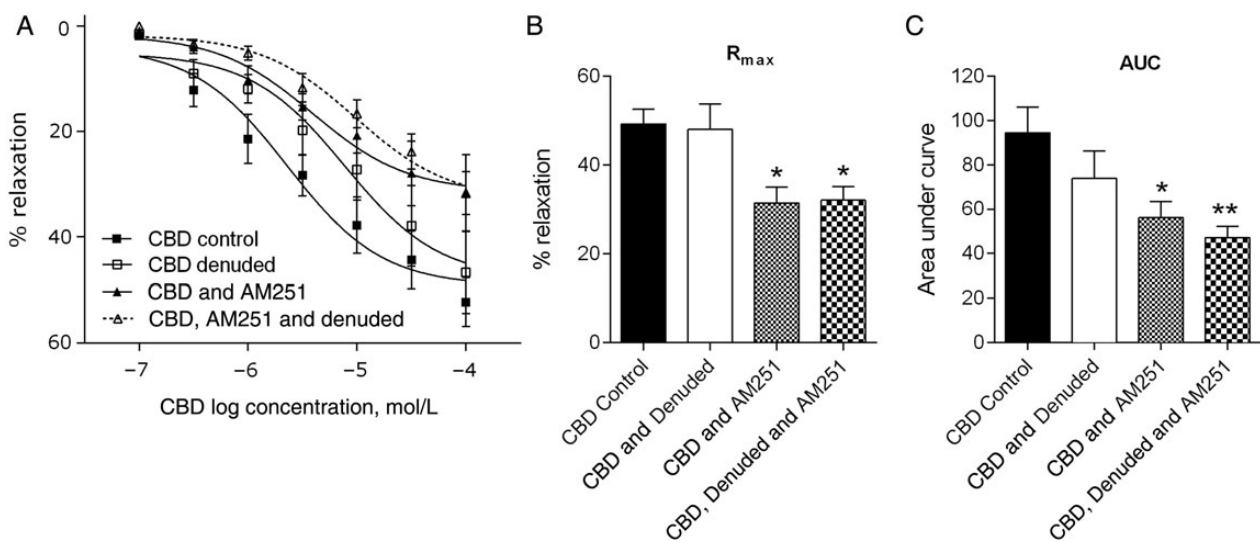


Figure 4 Location of the CB₁ receptor. Mean CBD-induced vasorelaxation in control arteries, endothelial denuded arteries, in arteries incubated with the CB₁ antagonist AM251 or in arteries that are endothelial denuded and incubated with AM251 (A) and the corresponding R_{max} (B) and AUC (C) values within each patient ($n = 6$). Control responses to CBD and the three interventions were carried out in adjacent segments of mesenteric artery from the same patient. Data were compared using one way analysis of variance (ANOVA) with Dunnett's *post hoc* analysis comparing against the CBD control data. * $P < 0.05$, ** $P < 0.01$.

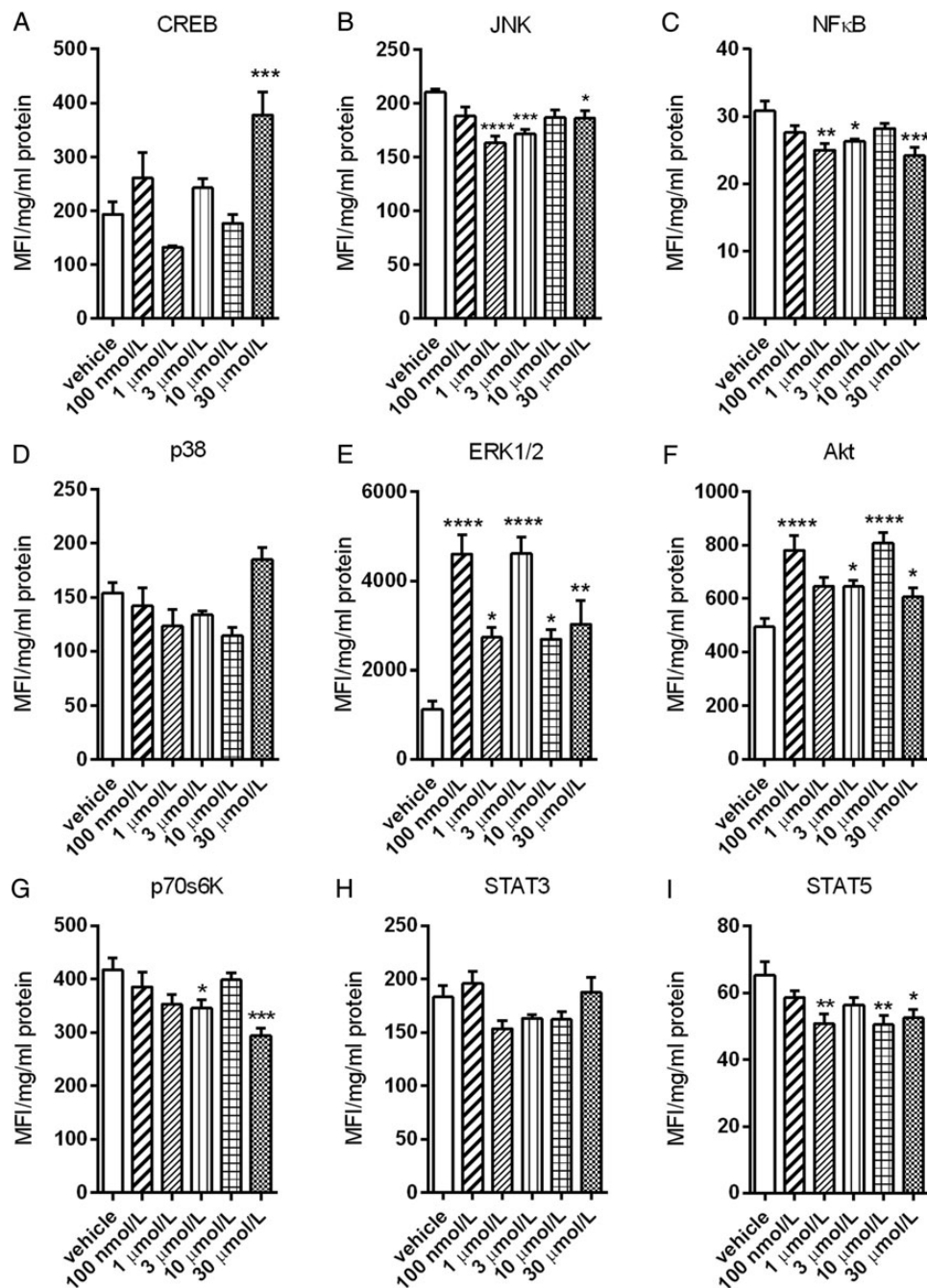


Figure 5 Signal transduction by CBD in human endothelial cells. Levels of phosphorylated CREB (A), JNK (B), NFκB (C), p38 (D), ERK/MAP kinase 1/2 (E), Akt (F), p70 S6 kinase (G), STAT3 (H), and STAT5A/B (I) were measured in human aortic endothelial cell lysates after 10 min treatment with increasing concentrations of CBD using the Luminex[®] xMAP[®] technology and normalized to total protein content. MFI, median fluorescent intensity. Data are presented as mean ± SEM ($n = 6$) and were analysed by ANOVA with Dunnett's *post-hoc* analysis against the vehicle control response. * $P < 0.05$, ** $P < 0.01$, *** $P < 0.001$, **** $P < 0.0001$.

In the rat aortae, CBD causes time-dependent vasorelaxation that can be inhibited by PPAR γ antagonism.²² In human small mesenteric arteries, we found that CBD-induced vasorelaxation also gradually increases with time, but this effect was not inhibited by PPAR γ antagonism. However, we previously observed in rats that PPAR γ mediated time-dependent vasorelaxant responses to cannabinoids were only observed in conduit arteries such as the superior mesenteric artery and aorta, but not in third-order mesenteric arteries.⁴⁷ Thus the

lack of PPAR γ -mediated vasorelaxation seen to CBD may be due to the size of the arteries in the present study. An interesting observation was that the vasorelaxant response to CBD was non-recoverable, persisting up to 2 h post-administration. This is in contrast to our previous observations with THC⁴⁷ where tone recovered. However, the mechanisms of action (CB $_1$, NO, and the endothelium) of CBD reported in the present study are very different to that reported for THC.⁴⁸

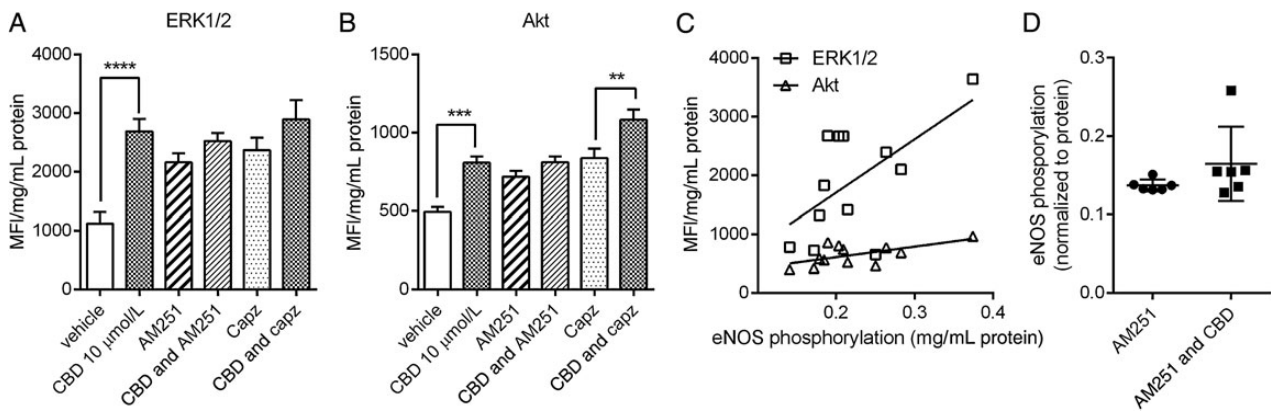


Figure 6 Signal transduction by CBD in human endothelial cells. Levels of phosphorylated ERK/MAP kinase 1/2 (A) and Akt (B) measured in human aortic endothelial cell lysates after 10 min treatment with CBD in the presence of the CB₁ antagonist AM251 (100 nM) or the TRPV1 antagonist capsaizepine (1 μM). (C) Correlation of levels of phosphorylated ERK1/2 and Akt with levels of phosphorylated eNOS in human aortic endothelial cell lysates after 10 min treatment with CBD. MFI, median fluorescent intensity. (D) The effects of the CB₁ receptor antagonist AM251 on CBD-stimulated eNOS phosphorylation. Data are presented as mean ± SEM (n = 6) and were analysed by ANOVA with Sidak's multiple comparison test of selected pairs. ***p* < 0.01, *****p* < 0.001.

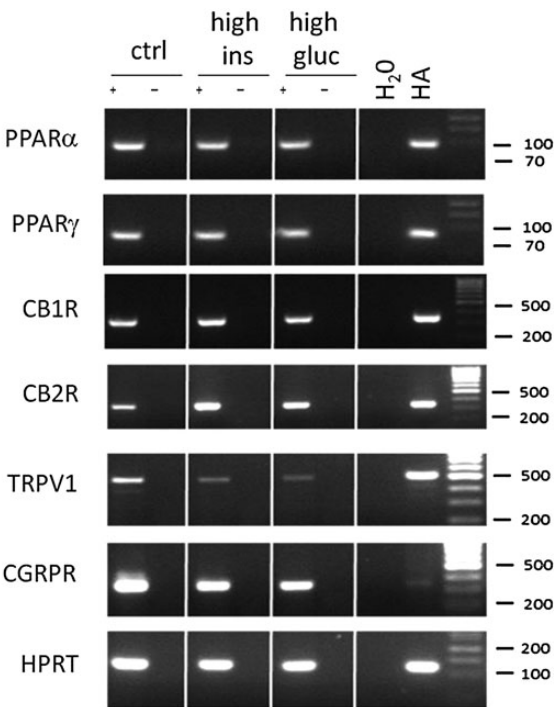


Figure 7 The effects of high insulin and glucose on the expression of cannabinoid targets in HAECs. RT-PCR showing the presence of PPARα and γ, CB₁, CB₂, TRPV1, CGRP receptors, and a house-keeping gene hypoxanthine-guanine phosphoribosyltransferase (HPRT) in human aortic endothelial cells (HAECs) grown in control conditions (first column) or a high insulin (500 nM, second column) or high glucose (25 mM, third column) environment for 96 h. Human astrocytes (HA) are shown as a positive control for cannabinoid targets.

Human endothelial cell-based studies showed that CBD causes a range of intracellular signalling pathways to be altered at concentrations from 100 nM, but not in a classical concentration-dependent manner.

This non-classical concentration–response, particularly for ERK and Akt activation, may be a result of activation of multiple targets by CBD. Indeed the ERK activation appeared to be inhibited by antagonists of both CB₁ and TRPV1. Bell-shaped response curves to CBD are also commonly observed.^{49,50} The observed phosphorylation of ERK and Akt is consistent with known CB₁-mediated signal transduction, and CB₁-mediated activation of ERK has been observed in human umbilical vein endothelial cells.³⁵ Indeed, we found that CB₁ antagonism prevented this increase in ERK. Cannabinoid activation of both MAPK and Akt in the vasculature has also been suggested to be via non-CB₁/CB₂ mechanisms such as CB_e.^{51,52} However, given our response to CBD was not antagonized by O-1918, it is unlikely that CBD acts through this site. Vasorelaxation to many compounds is mediated by activation of ERK and Akt, thus the CBD-induced increase in both ERK and Akt and therefore both may represent the intracellular signalling mechanisms underpinning the vasorelaxant effects of CBD, as suggested by the positive correlation with eNOS phosphorylation and the inhibition of eNOS phosphorylation by AM251.

CBD also significantly decreased the level of phosphorylated JNK and NFκB, key pro-inflammatory pathways, in human endothelial cells. This is consistent with previous studies showing CBD can attenuate the increase in JNK and NFκB caused by hepatic ischemia/reperfusion injury,⁵³ diabetic cardiomyopathy,¹¹ and hyperglycaemia.¹² Our data suggest that reductions in these inflammatory pathways in endothelial cells may underpin some of the protective effects of CBD observed in the vasculature.⁵

Previous studies have shown a decrease in the phosphorylation of p70s6K, an mTOR substrate, in response to synthetic CB_{1/2} agonist⁵⁴ or THC⁵⁵ in cancer cells linked to autophagy pathways. STAT5 is also crucial in the regulation of cell fate, and its activation is key in angiogenesis.⁵⁶ The reduction in the levels of phosphorylated p70s6K and STAT5 in human endothelial cells in response to CBD in the present study may represent the intracellular signalling mechanisms underpinning the anti-angiogenic effects of CBD reported by Solinas et al.⁵⁷ in human umbilical vein endothelial cells.

Given the variability of the responses seen to CBD, *post hoc* analysis of patient medical notes was undertaken. We found that CBD-induced

vasorelaxation was enhanced in females compared with males. The enhanced vasorelaxation observed in female patient arteries compared with males may be due to protective effects of oestrogen on endothelial function.⁵⁸ It has also been shown that CB₁ receptor expression was increased in the leucocyte cells of females when compared with males.⁵⁹ CBD responses were also reduced in those with increased cholesterol or diabetes. In rats fed high cholesterol diets, CB₁ receptor expression is reduced.⁶⁰ Similarly, CB₁ expression is reduced (and associated vasorelaxant responses to anandamide) in obese rats.⁶⁰ To test whether this might also be true in human aortic endothelial cells, we carried out RT-PCR on the major targets for cannabinoid in control condition and after prolonged exposure to a high-glucose or high-insulin environment. We did not find a reduction in CB1R expression; however, CB2R expression did appear to be up-regulated, which is in agreement with numerous studies showing that CB₂ is up-regulated in vasculature pathologies.⁶¹ We did however also observe a decrease in the expression of TRPV1 and CGRPR in response to both a high-glucose or high-insulin medium, which is consistent with reports showing that TRPV1 vasorelaxant responses and receptor coupling to nitric oxide is disrupted in diabetes.⁶² Interestingly, the TRPV1 receptor has a cholesterol binding site which reduces its function.⁶³ Thus the blunted CBD response in diabetic and hypercholesterolaemia patients may be as a result of reduced TRPV1 expression and/or function, which warrants further investigation. Several medications (beta blockers, statins, and oral hypoglycaemics) were also associated with reduced vasorelaxant responses to CBD, but it is not yet clear whether this represents a drug–drug interaction, or whether it is a result of the pathology for which the medication is being taken.

In conclusion, this study reports that CBD causes vasorelaxation of the human mesenteric artery. This vasorelaxation is mediated through CB₁, TRP channels, the endothelium and potassium channel activation. CBD also causes time-dependent vasorelaxation of human mesenteric arteries, but this was not due to PPAR γ activation. The vasorelaxant effects of CBD are reduced in patients with hypercholesterolemia and type-2 diabetes, which may be a result of a reduced TRPV1 component. In human endothelial cells, CBD causes alterations in the phosphorylation of many intracellular proteins that might explain the vasorelaxant (eNOS, ERK, and Akt), anti-inflammatory (JNK and NF κ B) and anti-angiogenic effects of CBD (p70s6K and STAT5).

Supplementary material

Supplementary Material is available at *Cardiovascular Research* online.

Funding

This work was supported by the British Heart Foundation (FS/09/061). Funding to pay the Open Access publication charges for this article was provided by the British Heart Foundation.

Conflict of interest: none declared.

References

- Stanley C, O'Sullivan SE. Vascular targets for cannabinoids: animal and human studies. *Br J Pharmacol* 2014;**171**:1361–1378.
- Montecucco F, Di Marzo V. At the heart of the matter: the endocannabinoid system in cardiovascular function and dysfunction. *Trends Pharmacol Sci* 2012;**33**:331–340.
- Schubart CD, Sommer IE, van Gastel WA, Goetgebuuer RL, Kahn RS, Boks MP. Cannabis with high cannabidiol content is associated with fewer psychotic experiences. *Schizophr Res* 2011;**130**:216–221.
- Pertwee RG. The diverse CB₁ and CB₂ receptor pharmacology of three plant cannabinoids: delta9-tetrahydrocannabinol, cannabidiol and delta9-tetrahydrocannabinol. *Br J Pharmacol* 2008;**153**:199–215.
- Stanley CP, Hind WH, O'Sullivan SE. Is the cardiovascular system a therapeutic target for cannabidiol? *Br J Clin Pharmacol* 2013;**75**:313–322.
- Russo E, Guy GW. A tale of two cannabinoids: the therapeutic rationale for combining tetrahydrocannabinol and cannabidiol. *Med Hypotheses* 2006;**66**:234–246.
- Izzo AA, Borrelli F, Capasso R, Di Marzo V, Mechoulam R. Non-psychoactive plant cannabinoids: new therapeutic opportunities from an ancient herb. *Trends Pharmacol Sci* 2009;**30**:515–527.
- Zuardi AW. Cannabidiol: from an inactive cannabinoid to a drug with wide spectrum of action. *Rev Bras Psiquiatr* 2008;**30**:271–280.
- Iuvone T, Esposito G, De Filippis D, Scuderi C, Steardo L. Cannabidiol: a promising drug for neurodegenerative disorders? *CNS Neurosci Ther* 2009;**15**:65–75.
- Booz GW. Cannabidiol as an emergent therapeutic strategy for lessening the impact of inflammation on oxidative stress. *Free Radical Bio Med* 2011;**51**:1054–1061.
- Rajesh M, Mukhopadhyay P, Batkai S, Patel V, Saito K, Matsumoto S, Kashiwaya Y, Horvath B, Mukhopadhyay B, Becker L, Hasko G, Liaudet L, Wink DA, Veves A, Mechoulam R, Pacher P. Cannabidiol attenuates cardiac dysfunction, oxidative stress, fibrosis, and inflammatory and cell death signaling pathways in diabetic cardiomyopathy. *J Am Coll Cardiol* 2010;**56**:2115–2125.
- Rajesh M, Mukhopadhyay P, Batkai S, Hasko G, Liaudet L, Drel VR, Obrosova IG, Pacher P. Cannabidiol attenuates high glucose-induced endothelial cell inflammatory response and barrier disruption. *Am J Physiol Heart Circ Physiol* 2007;**293**:H610–H619.
- Ruiz-Valdepenas L, Martinez-Orgado JA, Benito C, Millan A, Tolon RM, Romero J. Cannabidiol reduces lipopolysaccharide-induced vascular changes and inflammation in the mouse brain: an intravital microscopy study. *J Neuroinflammation* 2011;**8**:5.
- El-Remessy AB, Al-Shabraway M, Khalifa Y, Tsai N-T, Caldwell RB, Liou GI. Neuroprotective and blood-retinal barrier-preserving effects of cannabidiol in experimental diabetes. *Am J Pathol* 2006;**168**:235–244.
- Walsh SK, Hepburn CY, Kane KA, Wainwright CL. Acute administration of cannabidiol in vivo suppresses ischaemia-induced cardiac arrhythmias and reduces infarct size when given at reperfusion. *Br J Pharmacol* 2010;**160**:1234–1242.
- Hayakawa K, Mishima K, Irie K, Hazekawa M, Mishima S, Fujioka M, Orito K, Egashira N, Katsurabayashi S, Takasaki K, Iwasaki K, Fujiwara M. Cannabidiol prevents a post-ischemic injury progressively induced by cerebral ischemia via a high-mobility group box1-inhibiting mechanism. *Neuropharmacol* 2008;**55**:1280–1286.
- Hayakawa K, Mishima K, Nozako M, Ogata A, Hazekawa M, Liu AX, Fujioka M, Abe K, Hasebe N, Egashira N, Iwasaki K, Fujiwara M. Repeated treatment with cannabidiol but not Delta9-tetrahydrocannabinol has a neuroprotective effect without the development of tolerance. *Neuropharmacol* 2007;**52**:1079–1087.
- Mishima K, Hayakawa K, Abe K, Ikeda T, Egashira N, Iwasaki K, Fujiwara M. Cannabidiol prevents cerebral infarction via a serotonergic 5-hydroxytryptamine1A receptor-dependent mechanism. *Stroke* 2005;**36**:1077–1082.
- Hayakawa K, Mishima K, Nozako M, Hazekawa M, Irie K, Fujioka M, Orito K, Abe K, Hasebe N, Egashira N, Iwasaki K, Fujiwara M. Delayed treatment with cannabidiol has a cerebroprotective action via a cannabinoid receptor-independent myeloperoxidase-inhibiting mechanism. *J Neurochem* 2007;**102**:1488–1496.
- Jarai Z, Wagner JA, Varga KR, Lake KD, Compton DR, Martin BR, Zimmer AM, Bonner TI, Buckley NE, Mezey E, Razdan RK, Zimmer A, Kunos G. Cannabinoid-induced mesenteric vasodilation through an endothelial site distinct from CB₁ or CB₂ receptors. *Proc Natl Acad Sci USA* 1999;**96**:14136–14141.
- Offertaler L, Mo FM, Batkai S, Liu J, Begg M, Razdan RK, Martin BR, Bukoski RD, Kunos G. Selective ligands and cellular effectors of a G protein-coupled endothelial cannabinoid receptor. *Mol Pharmacol* 2003;**63**:699–705.
- O'Sullivan SE, Sun Y, Bennett AJ, Randall MD, Kendall DA. Time-dependent vascular actions of cannabidiol in the rat aorta. *Eur J Pharmacol* 2009;**612**:61–68.
- Hind WH, Tufarelli C, Neophytou M, Anderson SI, England TJ, O'Sullivan SE. Endocannabinoids modulate human blood-brain barrier permeability in vitro. *Br J Pharmacol* 2015. doi:10.1111/bph.13106.
- Spinsanti G, Zannoli R, Panti C, Ceccarelli I, Marsili L, Bachiocco V, Frati F, Aloisi AM. Quantitative real-time PCR detection of TRPV1–4 gene expression in human leukocytes from healthy and hyposensitive subjects. *Mol Pain* 2008;**4**:51.
- Reynders V, Loitsch S, Steinhilber C, Wagner T, Steinhilber D, Bargon J. Peroxisome proliferator-activated receptor alpha (PPAR alpha) down-regulation in cystic fibrosis lymphocytes. *Resp Res* 2006;**7**:104.
- Cencioni MT, Chirchui V, Catanzaro G, Borsellino G, Bernardi G, Battistini L, Maccarrone M. Anandamide suppresses proliferation and cytokine release from primary human T-lymphocytes mainly via CB₂ receptors. *PLoS One* 2010;**5**:e8688.
- Luo D, Zhang YW, Peng WJ, Peng J, Chen QQ, Li D, Deng HW, Li YJ. Transient receptor potential vanilloid 1-mediated expression and secretion of endothelial cell-derived calcitonin gene-related peptide. *Regul Peptides* 2008;**150**:66–72.
- Dong YL, Fang L, Kondapaka S, Gangula PR, Wimalawansa SJ, Yallampalli C. Involvement of calcitonin gene-related peptide in the modulation of human myometrial contractility during pregnancy. *J Clin Invest* 1999;**104**:559–565.
- Begg M, Mo FM, Offertaler L, Batkai S, Pacher P, Razdan RK, Lovinger DM, Kunos G. G protein-coupled endothelial receptor for atypical cannabinoid ligands modulates a Ca²⁺-dependent K⁺ current. *J Biol Chem* 2003;**278**:46188–46194.
- Fantozzi I, Zhang S, Platoshyn O, Remillard CV, Cowling RT, Yuan JXJ. Hypoxia increases AP-1 binding activity by enhancing capacitative Ca²⁺ entry in human pulmonary artery endothelial cells. *Am J Physiol* 2003;**285**:L1233–L1245.

31. Wang J, Okamoto Y, Tsuboi K, Ueda N. The stimulatory effect of phosphatidylethanolamine on N-acylphosphatidylethanolamine-hydrolyzing phospholipase D (NAPE-PLD). *Neuropharmacol* 2008;**54**:8–15.
32. Sugiura T, Kodaka T, Nakane S, Kishimoto S, Kondo S, Waku K. Detection of an endogenous cannabinimimetic molecule, 2-arachidonoylglycerol, and cannabinoid CB1 receptor mRNA in human vascular cells: is 2-arachidonoylglycerol a possible vasomodulator? *Biochem Biophys Res* 1998;**243**:838–843.
33. Rajesh M, Mukhopadhyay P, Batkai S, Hasko G, Liaudet L, Huffman JW, Csiszar A, Ungvari Z, Mackie K, Chatterjee S, Pacher P. CB2-receptor stimulation attenuates TNF-alpha-induced human endothelial cell activation, transendothelial migration of monocytes, and monocyte-endothelial adhesion. *Am J Physiol Heart Circ Physiol* 2007;**293**:H2210–H2218.
34. Rajesh M, Mukhopadhyay P, Hasko G, Huffman JW, Mackie K, Pacher P. CB2 cannabinoid receptor agonists attenuate TNF-alpha-induced human vascular smooth muscle cell proliferation and migration. *Br J Pharmacol* 2008;**153**:347–357.
35. Liu J, Gao B, Mirshahi F, Sanyal AJ, Khanolkar AD, Makriyannis A, Kunos G. Functional CB1 cannabinoid receptors in human vascular endothelial cells. *Biochem J* 2000;**346**(Pt 3):835–840.
36. Showalter VM, Compton DR, Martin BR, Abood ME. Evaluation of binding in a transfected cell line expressing a peripheral cannabinoid receptor (CB2): identification of cannabinoid receptor subtype selective ligands. *J Pharmacol Exp Ther* 1996;**278**:989–999.
37. Bisogno T, Hanus L, De Petrocellis L, Tchilibon S, Ponde DE, Brandi I, Moriello AS, Davis JB, Mechoulam R, Di Marzo V. Molecular targets for cannabidiol and its synthetic analogues: effect on vanilloid VR1 receptors and on the cellular uptake and enzymatic hydrolysis of anandamide. *Br J Pharmacol* 2001;**134**:845–852.
38. Stanley C, Manning G, O'Sullivan S. Cannabinoid induced vasorelaxation of human mesenteric arteries. *Proceeding of the British Pharmacological Society Meeting* 2010. http://bps.conference-services.net/resources/344/2336/pdf/BPSWINTER10_0158.pdf.
39. Stanley CP, O'Sullivan SE. Cyclooxygenase metabolism mediates vasorelaxation to 2-arachidonoylglycerol (2-AG) in human mesenteric arteries. *Pharmacol Res* 2014;**81**:74–82.
40. Deutsch DG, Goligorsky MS, Schmid PC, Krebsbach RJ, Schmid HH, Das SK, Dey SK, Arreaza G, Thorup C, Stefano G, Moore LC. Production and physiological actions of anandamide in the vasculature of the rat kidney. *J Clin Invest* 1997;**100**:1538–1546.
41. De Petrocellis L, Ligresti A, Moriello AS, Allara M, Bisogno T, Petrosino S, Stott CG, Di Marzo V. Effects of cannabinoids and cannabinoid-enriched Cannabis extracts on TRP channels and endocannabinoid metabolic enzymes. *Br J Pharmacol* 2011;**163**:1479–1494.
42. Yamada T, Ueda T, Shibata Y, Ikegami Y, Saito M, Ishida Y, Ugawa S, Kohri K, Shimada S. TRPV2 activation induces apoptotic cell death in human T24 bladder cancer cells: a potential therapeutic target for bladder cancer. *Urology* 2010;**76**:509 e501–507.
43. Costa B, Giagnoni G, Franke C, Trovato AE, Colleoni M. Vanilloid TRPV1 receptor mediates the antihyperalgesic effect of the nonpsychoactive cannabinoid, cannabidiol, in a rat model of acute inflammation. *Br J Pharmacol* 2004;**143**:247–250.
44. Costa B, Trovato AE, Comelli F, Giagnoni G, Colleoni M. The non-psychoactive cannabis constituent cannabidiol is an orally effective therapeutic agent in rat chronic inflammatory and neuropathic pain. *Eur J Pharmacol* 2007;**556**:75–83.
45. Zygmunt PM, Andersson DA, Hogestatt ED. Delta 9-tetrahydrocannabinol and cannabidiol activate capsaicin-sensitive sensory nerves via a CB1 and CB2 cannabinoid receptor-independent mechanism. *J Neurosci* 2002;**22**:4720–4727.
46. Edvinsson L, Ahnstedt H, Larsen R, Sheykhzade M. Differential localization and characterization of functional calcitonin gene-related peptide receptors in human subcutaneous arteries. *Acta Physiol* 2014;**210**:811–822.
47. O'Sullivan SE, Kendall DA, Randall MD. Further characterization of the time-dependent vascular effects of Δ^9 -tetrahydrocannabinol. *J Pharmacol Exp Ther* 2006;**317**:428–438.
48. O'Sullivan SE, Kendall DA, Randall MD. The effects of Delta9-tetrahydrocannabinol in rat mesenteric vasculature, and its interactions with the endocannabinoid anandamide. *Br J Pharmacol* 2005;**145**:514–526.
49. Rock EM, Bolognini D, Limebeer CL, Cascio MG, Anavi-Goffer S, Fletcher PJ, Mechoulam R, Pertwee RG, Parker LA. Cannabidiol, a non-psychoactive component of cannabis, attenuates vomiting and nausea-like behaviour via indirect agonism of 5-HT(1A) somatodendritic autoreceptors in the dorsal raphe nucleus. *Br J Pharmacol* 2012;**165**:2620–2634.
50. Campos AC, Guimaraes FS. Involvement of 5HT1A receptors in the anxiolytic-like effects of cannabidiol injected into the dorsolateral periaqueductal gray of rats. *Psychopharmacol* 2008;**199**:223–230.
51. McCollum L, Howlett AC, Mukhopadhyay S. Anandamide-mediated CB1/CB2 cannabinoid receptor-independent nitric oxide production in rabbit aortic endothelial cells. *J Pharmacol Exp Ther* 2007;**321**:930–937.
52. Mo FM, Offertaler L, Kunos G. Atypical cannabinoid stimulates endothelial cell migration via a Gi/Go-coupled receptor distinct from CB1, CB2 or EDG-1. *Eur J Pharmacol* 2004;**489**:21–27.
53. Mukhopadhyay P, Rajesh M, Horvath B, Batkai S, Park O, Tanchian G, Gao RY, Patel V, Wink DA, Liaudet L, Hasko G, Mechoulam R, Pacher P. Cannabidiol protects against hepatic ischemia/reperfusion injury by attenuating inflammatory signaling and response, oxidative/nitrative stress, and cell death. *Free Rad Biol Med* 2011;**50**:1368–1381.
54. Dando I, Donadelli M, Costanzo C, Dalla Pozza E, D'Alessandro A, Zolla L, Palmieri M. Cannabinoids inhibit energetic metabolism and induce AMPK-dependent autophagy in pancreatic cancer cells. *Cell Death Dis* 2013;**4**:e664.
55. Salazar M, Carracedo A, Salanueva IJ, Hernandez-Tiedra S, Lorente M, Egia A, Vazquez P, Blazquez C, Torres S, Garcia S, Nowak J, Fimia GM, Piacentini M, Ceconi F, Pandolfi PP, Gonzalez-Feria L, Iovanna JL, Guzman M, Boya P, Velasco G. Cannabinoid action induces autophagy-mediated cell death through stimulation of ER stress in human glioma cells. *J Clin Invest* 2009;**119**:1359–1372.
56. Yang X, Meyer K, Friedl A. STAT5 and prolactin participate in a positive autocrine feedback loop that promotes angiogenesis. *J Biol Chem* 2013;**288**:21184–21196.
57. Solinas M, Massi P, Cantelmo AR, Cattaneo MG, Cammarota R, Bartolini D, Cinquina V, Valenti M, Vicentini LM, Noonan DM, Albin A, Parolaro D. Cannabidiol inhibits angiogenesis by multiple mechanisms. *Br J Pharmacol* 2012;**167**:1218–1231.
58. Novella S, Dantas AP, Segarra G, Medina P, Hermenegildo C. Vascular aging in women: is estrogen the fountain of youth? *Front Physiol* 2012;**3**:165.
59. Onaivi ES, Chaudhuri G, Abaci AS, Parker M, Manier DH, Martin PR, Hubbard JR. Expression of cannabinoid receptors and their gene transcripts in human blood cells. *Prog Neuropsychopharmacol Biol Psychiatry* 1999;**23**:1063–1077.
60. Lobato NS, Filgueira FP, Prakash R, Giachini FR, Ergul A, Carvalho MH, Webb RC, Tostes RC, Fortes ZB. Reduced endothelium-dependent relaxation to anandamide in mesenteric arteries from young obese Zucker rats. *PLoS One* 2013;**8**:e63449.
61. Steffens S, Pacher P. Targeting cannabinoid receptor CB(2) in cardiovascular disorders: promises and controversies. *Br J Pharmacol* 2012;**167**:313–323.
62. Guarini G, Ohanyan VA, Kmetz JG, DelloStritto DJ, Thoppil RJ, Thodeti CK, Meszaros JG, Damron DS, Bratz IN. Disruption of TRPV1-mediated coupling of coronary blood flow to cardiac metabolism in diabetic mice: role of nitric oxide and BK channels. *Am J Physiol Heart Circ Physiol* 2012;**303**:H216–H223.
63. Picazo-Juárez G, Romero-Suárez S, Nieto-Posadas A, Llorente I, Jara-Oseguera A, Briggs M, McIntosh TJ, Simon SA, Ladrón-de-Guevara E, Islas LD, Rosenbaum T. Identification of a binding motif in the S5 helix that confers cholesterol sensitivity to the TRPV1 ion channel. *J Biol Chem*. 2011;**286**:24966–24976.