

VOLUME 290 (2015) PAGES 15365–15370

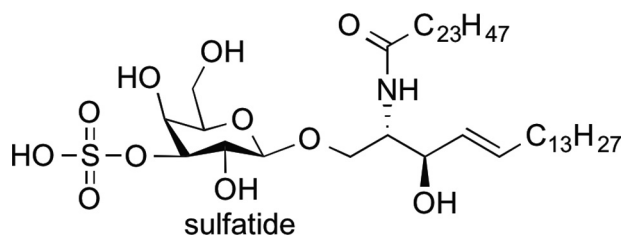
DOI 10.1074/jbc.A115.647057

The alpha and omega of galactosylceramides in T cell immune function.

Alysia M. Birkholz, Amy R. Howell, and Mitchell Kronenberg

PAGE 15367:

There was an error in the structure of the sulfatide compound in Fig. 3D. In the original figure, a 1"-1 α linkage of the sulfated sugar to the ceramide lipid was depicted. The corrected sulfatide structure, with a 1"-1 β linkage of the sulfated sugar to the ceramide, is shown here.



Authors are urged to introduce these corrections into any reprints they distribute. Secondary (abstract) services are urged to carry notice of these corrections as prominently as they carried the original abstracts.