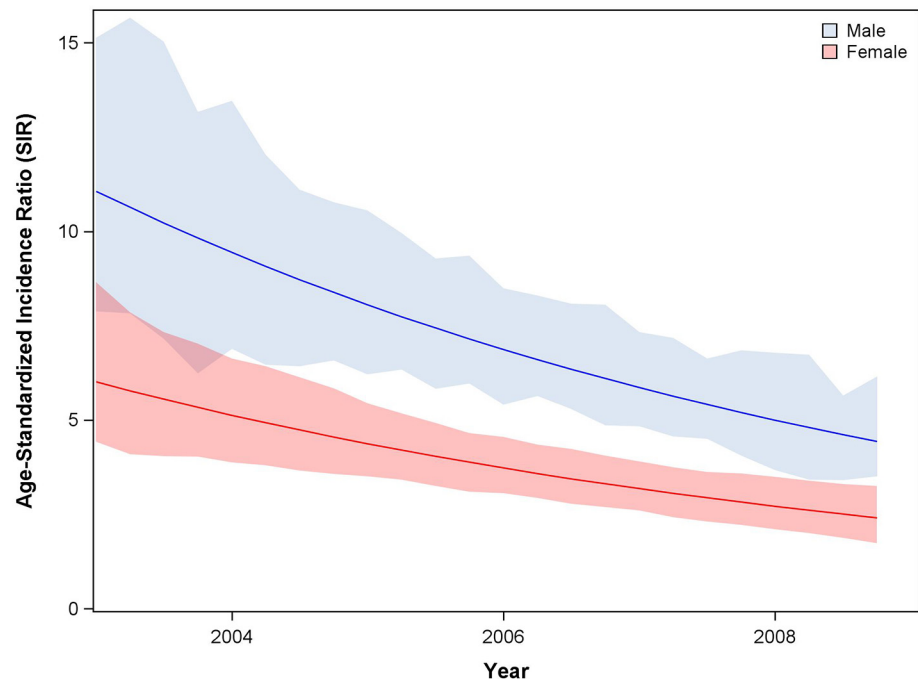


CORRECTION

# Correction: Cancer Incidence following Expansion of HIV Treatment in Botswana

Scott Dryden-Peterson, Heluf Medhin, Malebogo Kebabonye-Pusoentsi, George R. Seage, III, Gita Suneja, Mukendi K. A. Kayembe, Mompoti Mmalane, Timothy Rebbeck, Jennifer R. Rider, Myron Essex, Shahin Lockman

The images for Figs 3 and 6 are incorrectly switched. The image that appears as Fig 3 should be Fig 6, and the image that appears as Fig 6 should be Fig 3. The figure captions appear in the correct order. Please see the corrected figures here.



**Fig 3. Trend in standardized incidence ratio (SIR) of cancer comparing HIV infected and HIV uninfected populations during ART expansion.** Analyses utilized the IPW population. Note: ART, combination antiretroviral therapy.

doi:10.1371/journal.pone.0138742.g001

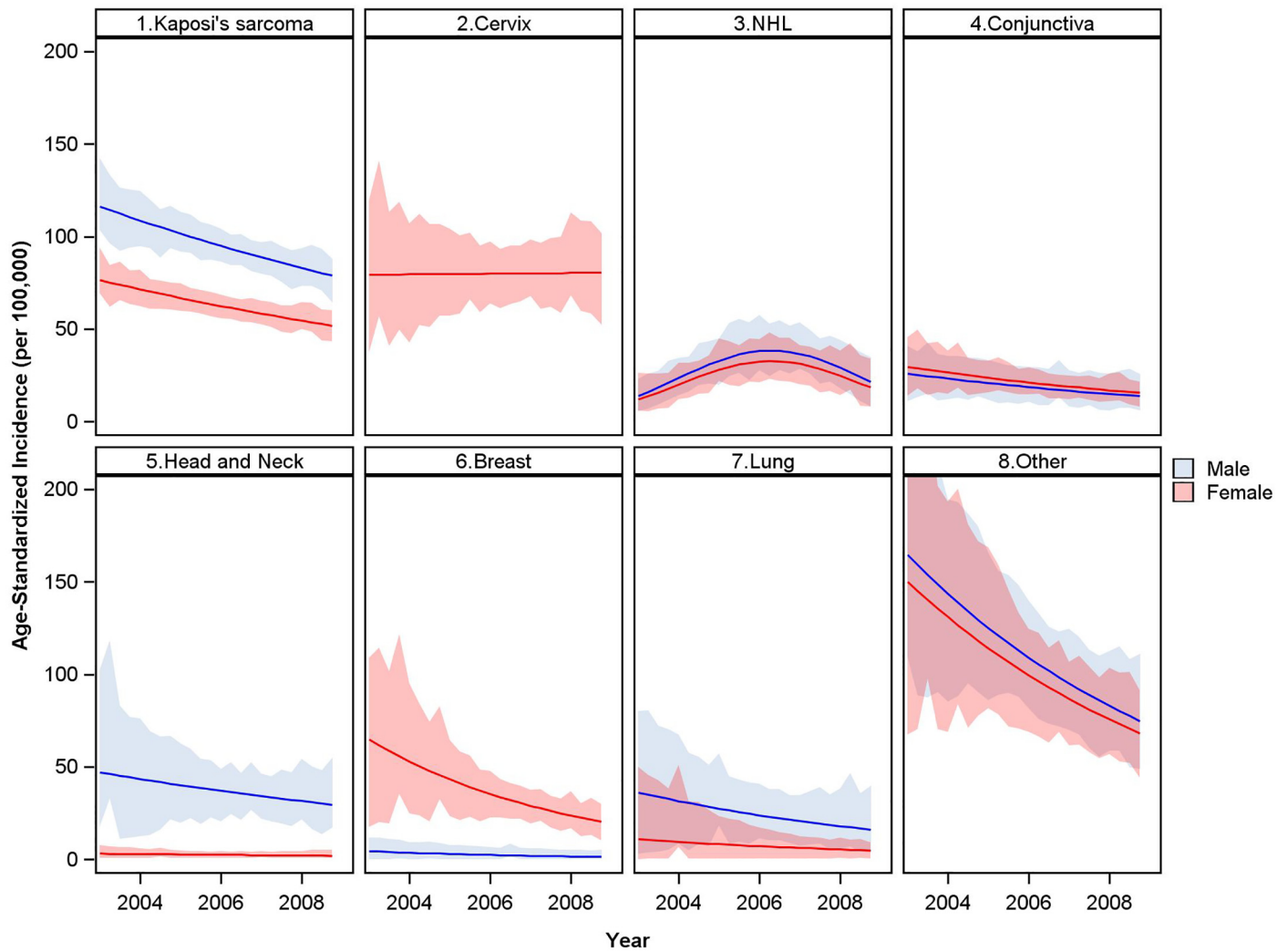


**OPEN ACCESS**

**Citation:** Dryden-Peterson S, Medhin H, Kebabonye-Pusoentsi M, Seage GR, III, Suneja G, Kayembe MKA, et al. (2015) Correction: Cancer Incidence following Expansion of HIV Treatment in Botswana. PLoS ONE 10(9): e0138742. doi:10.1371/journal.pone.0138742

**Published:** September 16, 2015

**Copyright:** © 2015 Dryden-Peterson et al. This is an open access article distributed under the terms of the [Creative Commons Attribution License](https://creativecommons.org/licenses/by/4.0/), which permits unrestricted use, distribution, and reproduction in any medium, provided the original author and source are credited.



**Fig 6. Trends in incidence for leading cancers among HIV-infected population.** Estimates from IPW population accounting for changes in overall and age-specific HIV prevalence. Shaded 95% confidence bands from 1000 bootstrap samples. Note: NHL, non-Hodgkin's lymphoma

doi:10.1371/journal.pone.0138742.g002

## Reference

1. Dryden-Peterson S, Medhin H, Kebabonye-Pusoentsi M, Seage GR III, Suneja G, Kayembe MKA, et al. (2015) Cancer Incidence following Expansion of HIV Treatment in Botswana. PLoS ONE 10(8): e0135602. doi:10.1371/journal.pone.0135602 PMID: 26267867