

CORRECTION

Correction: Evaluating the A-Subunit of the Heat-Labile Toxin (LT) As an Immunogen and a Protective Antigen Against Enterotoxigenic *Escherichia coli* (ETEC)

The *PLOS ONE* Staff

[Fig 1](#) is incorrect. The authors have provided a corrected version here. The publisher apologizes for the error.



 OPEN ACCESS

Citation: The *PLOS ONE* Staff (2015) Correction: Evaluating the A-Subunit of the Heat-Labile Toxin (LT) As an Immunogen and a Protective Antigen Against Enterotoxigenic *Escherichia coli* (ETEC). *PLoS ONE* 10(9): e0138938. doi:10.1371/journal.pone.0138938

Published: September 18, 2015

Copyright: © 2015 The PLOS ONE Staff. This is an open access article distributed under the terms of the [Creative Commons Attribution License](#), which permits unrestricted use, distribution, and reproduction in any medium, provided the original author and source are credited.

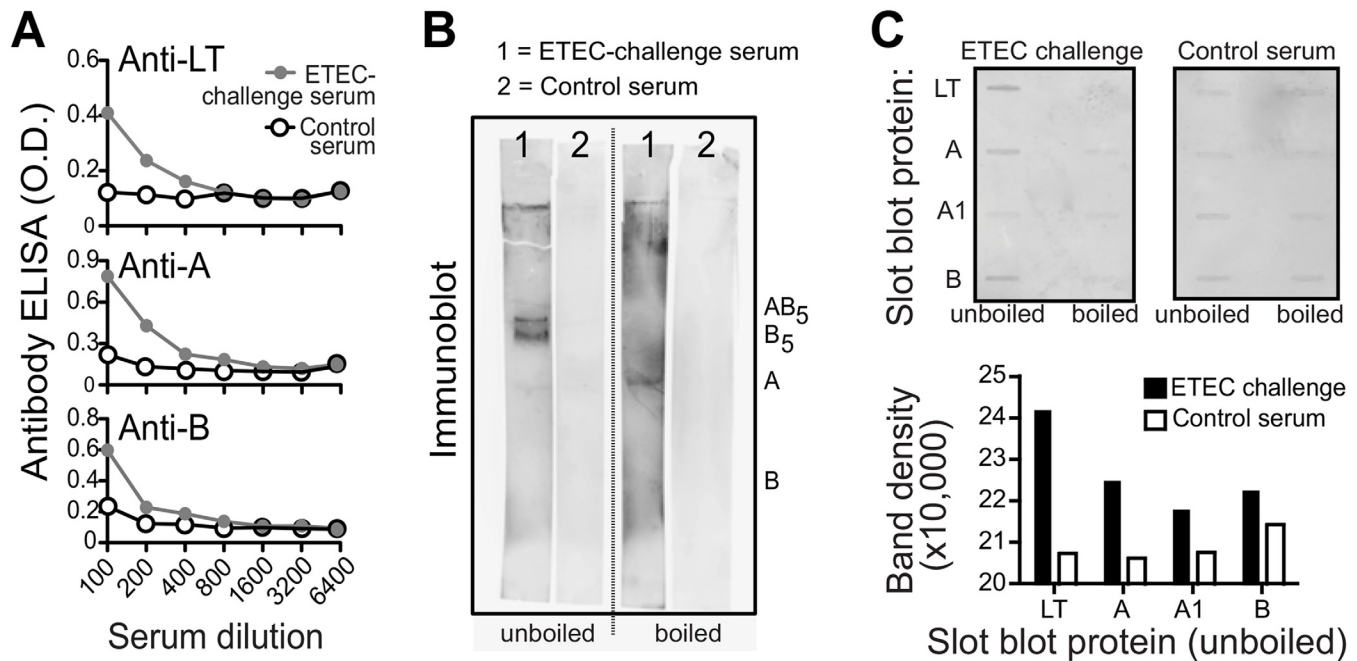


Fig 1. ETEC-challenged human serum pool contains antibodies to both A- and B-subunits of LT. (A) ETEC challenge serum (pooled 10 days after oral H10407 challenge) anti-LT, anti-A, and anti-B antibody responses detected by ELISA (gray line, circles) compared to commercially purchased control sera (black lines, open circles) using dilutions of each sample. (B) ETEC-challenge serum (1) or control serum (2) immunoblot testing for anti-LT antibodies using unboiled LT-loaded lanes or boiled LT-loaded lanes. In unboiled SDS-PAGE gels, LT runs as an 84 kD polymeric protein, pentameric B-subunit (56 kD), and LT-A (28 kD). When boiled and subjected to SDS-PAGE, LT separates into LT-A (28 kD) and monomeric LT-B (11.5 kD). (C) ETEC-challenge serum or control serum anti-LT, anti-A, or anti-B responses detected with a modified Immunoblot using a slot blot apparatus to load 0.1 μ g protein (LT, A, A1, or B) with raw images (top) and quantified band density of these images for unboiled, loaded proteins graphed (bottom).

doi:10.1371/journal.pone.0138938.g001

Reference

1. Norton EB, Branco LM, Clements JD (2015) Evaluating the A-Subunit of the Heat-Labile Toxin (LT) As an Immunogen and a Protective Antigen Against Enterotoxigenic *Escherichia coli* (ETEC). PLoS ONE 10(8): e0136302. doi: [10.1371/journal.pone.0136302](https://doi.org/10.1371/journal.pone.0136302) PMID: [26305793](https://pubmed.ncbi.nlm.nih.gov/26305793/)