

ARTICLE

Received 27 May 2015 | Accepted 30 Jul 2015 | Published 18 Sep 2015

DOI: 10.1038/ncomms9237

OPEN

Hypothalamic PKA regulates leptin sensitivity and adiposity

Linghai Yang¹ & G. Stanley McKnight¹

Mice lacking the RII β regulatory subunit of cyclic AMP-dependent protein kinase A (PKA) display reduced adiposity and resistance to diet-induced obesity. Here we show that RII β knockout (KO) mice have enhanced sensitivity to leptin's effects on both feeding and energy metabolism. After administration of a low dose of leptin, the duration of hypothalamic JAK/STAT3 signalling is increased, resulting in enhanced POMC mRNA induction. Consistent with the extended JAK/STAT3 activation, we find that the negative feedback regulator of leptin receptor signalling, *Socs3*, is inhibited in the hypothalamus of RII β KO mice. During fasting, RII β -PKA is activated and this correlates with an increase in CREB phosphorylation. The increase in CREB phosphorylation is absent in the fasted RII β KO hypothalamus. Selective inhibition of PKA activity in AgRP neurons partially recapitulates the leanness and resistance to diet-induced obesity of RII β KO mice. Our findings suggest that RII β -PKA modulates the duration of leptin receptor signalling and therefore the magnitude of the catabolic response to leptin.

¹Department of Pharmacology, University of Washington School of Medicine, 1959 North East Pacific Street, Box 357280, Seattle, Washington 98195, USA. Correspondence and requests for materials should be addressed to G.S.M. (email: mcknight@u.washington.edu).

The adipose-derived hormone, leptin, regulates energy balance by binding to receptors in the hypothalamus and regulating neural circuits that suppress feeding and increase energy expenditure^{1–4}. Plasma leptin concentration is directly correlated with the level of stored triglyceride in white adipocytes providing a negative feedback signal to the brain to help maintain body weight homeostasis. However, the chronic consumption of calories in excess of those required for daily energy expenditure leads to elevated adiposity, a proportionate increase in circulating leptin, and a decrease in the response of neurons to leptin⁵. This hypothalamic leptin resistance has limited the usefulness of leptin as a treatment for obesity. The leptin receptor (LepRb) signals primarily through stimulation of the associated JAK2 kinase which then leads to phosphorylation of STAT3 transcription factors and changes in gene transcription⁶. In addition, JAK2 triggers the PI3K pathway leading to multiple effects including activation of Akt and subsequent phosphorylation and inactivation of the transcription factor, FoxO1 (ref. 7). The intracellular mechanisms which regulate the overall sensitivity of neurons to circulating leptin are poorly understood. The protein kinase A (PKA) regulatory (R) subunit, RII β , is highly expressed in mouse brain, brown adipose tissue and white adipose tissue with limited expression elsewhere^{8–11}. RII β knockout (KO) mice exhibit a 50% reduction in white adipose tissue, a four to fivefold reduction in serum leptin, and are resistant to diet-induced obesity and diabetes^{10,12–14}. Previous studies have shown that deficiency of RII β -PKA in GABAergic hypothalamic neurons leads to the lean phenotype¹⁵ but it remains unclear what the intracellular signalling events are that account for this phenotype. Although reduced serum leptin is a strong anabolic signal to promote feeding and suppress energy expenditure¹⁶, RII β KO mice exhibit only a slight increase in food intake^{12,14} and a normal basal metabolic rate¹⁵ in the context of greatly reduced serum leptin. Based on these observations, we hypothesize that RII β -PKA may regulate energy balance by modulating leptin signalling in the hypothalamus and its deficiency may lead to sensitized responses to leptin.

PKA holoenzyme is a heterotetramer containing a dimer of two R subunits with each binding a catalytic (C) subunit. Binding of cyclic AMP (cAMP) to the R subunits leads to its conformational change and release of active C subunits. Four R subunits genes (encoding RI α , RI β , RII α and RII β) and two C subunits genes (encoding C α and C β) have been identified in mouse¹⁷. The R subunits act as intrinsic inhibitors of the C subunits and also protect the C subunits from degradation¹⁸. The RII β -PKA holoenzyme contains a homodimer of RII β and two C subunits (C α or C β). We have shown previously that RII β deficiency leads to decreased C subunits and PKA activity in adipose tissues^{10,11} and striatum^{8,19}.

In this report, we show that RII β -PKA regulates the sensitivity of mice to the catabolic effects of leptin on feeding and energy expenditure. We demonstrate that RII β -PKA is abundant in LepRb-expressing neurons in the hypothalamus and becomes activated during a fast. Inhibition of PKA by expression of a dominant negative *Prkar1a* allele in AgRP neurons inhibited hypothalamic CREB phosphorylation in fasted mice and resulted in a lean phenotype and resistance to high-fat diet-induced obesity, partially mimicking the phenotype of the RII β KO mouse. We suggest that the cAMP/PKA pathway plays an important physiological role in modulating the gain of LepR signalling in the hypothalamus and that this results in significant effects on overall adiposity.

Results

Disruption of RII β results in increased sensitivity to leptin. The mRNA levels of leptin-regulated orexigenic peptides, NPY and AgRP, and the anorexigenic α MSH precursor POMC in the

hypothalamus are similar between RII β KO and wild-type (WT) control mice in both fed and fasted states despite the very low leptin levels (Fig. 1a,b). This indicates that RII β KO mice have an intact leptin-responsive system in the hypothalamus but suggests that they might be hypersensitive to leptin.

To test leptin sensitivity, we injected low or high doses of leptin directly into the third ventricle of 6–8-week-old male RII β KO mice and WT controls. By measuring 24-h food intake, we determined that RII β KO and WT littermates respond equivalently to a single injection of a high dose of leptin (500 ng). However, when the leptin dose was reduced to 100 ng, there was a greater reduction of 24-h food intake in KO mice compared with WT mice (Fig. 1c). To further examine the effect of central leptin administration on body weight loss, leptin at a dose of 100 ng was injected through a cannula into the third ventricle of KO and WT mice once a day for 7 days. Food intake was suppressed to a much greater extent in KO mice compared with control WT mice (Fig. 1d). As expected from the food intake data, this low dose of leptin caused only a slight decrease in body weight in WT mice but a very significant loss of body weight in the KO mice which was rapidly reversed within 48 h after leptin was discontinued (Fig. 1e). Energy expenditure, as measured by oxygen consumption, was increased by >10% in KO mice but not in control WT mice after 100 ng leptin infusion into the third ventricle (Fig. 1f). We considered the possibility that the increased sensitivity to leptin in the adult KO mice might simply reflect their leanness at a time when the age-matched WT mice are beginning to gain fat mass and develop leptin resistance. To test this possibility, we examined weight and adiposity-matched WT and KO mice at a young age (Fig. 1g, j). Leptin induced greater suppression of food intake (Fig. 1h) and loss of body weight (Fig. 1i) in adiposity-matched RII β KO mice compared with WT mice, indicating that the elevated leptin sensitivity of RII β KO mice is not a secondary effect of their lean phenotype.

PKA regulates the duration of JAK/STAT signalling by LepRb.

Leptin activates both the JAK2-STAT3 pathway and the phosphatidylinositol 3-kinase (PI3K)-Akt pathway in the hypothalamus to regulate energy balance⁵. STAT3 tyrosine phosphorylation (pSTAT3-Y705) is a downstream effect of LepRb activation of JAK2, phosphorylation of the LepRb on Y1138, and recruitment of STAT3 to the LepRb/JAK2 complex. pSTAT3-Y705 was induced to similar extents in KO and WT mice 1 h after low leptin (100 ng) administration to overnight fasted animals. However, the pSTAT3 signal was sustained at least 6 h longer in KO mice compared with WT mice (Fig. 2a–c). At 6 h after 100 ng leptin administration, pSTAT3-positive neurons were much more abundant in KO hypothalamus (arcuate nucleus (ARC), ventromedial hypothalamic nucleus (VMH) and dorsomedial hypothalamic nucleus (DMH)) compared with WT (Fig. 2a). Interestingly, we also observed a small but significant increase in basal hypothalamic pSTAT3 signal in overnight fasted RII β KO mice compared with WT control (Fig. 2a,c inset). Consistent with the prolonged leptin-induced pSTAT3 signal, the level of POMC mRNA induced by low dose leptin administration was significantly greater in KO mice than in WT mice 12 h after leptin injection (Fig. 2d).

Socs3 acts as a feedback inhibitor of the JAK/STAT pathway by inhibiting JAK2 activity⁵. Hypothalamic *Socs3* mRNA levels were comparable between RII β KO and WT mice after an overnight fast, but were significantly lower in fed RII β KO mice compared with WT control (Fig. 2e). The induction of *Socs3* mRNA by low dose leptin was also attenuated in RII β KO mice (Fig. 2e). This indicates that RII β -PKA deficiency may impair hypothalamic *Socs3* expression and prevent the feedback inhibition that normally limits the duration of leptin signalling.

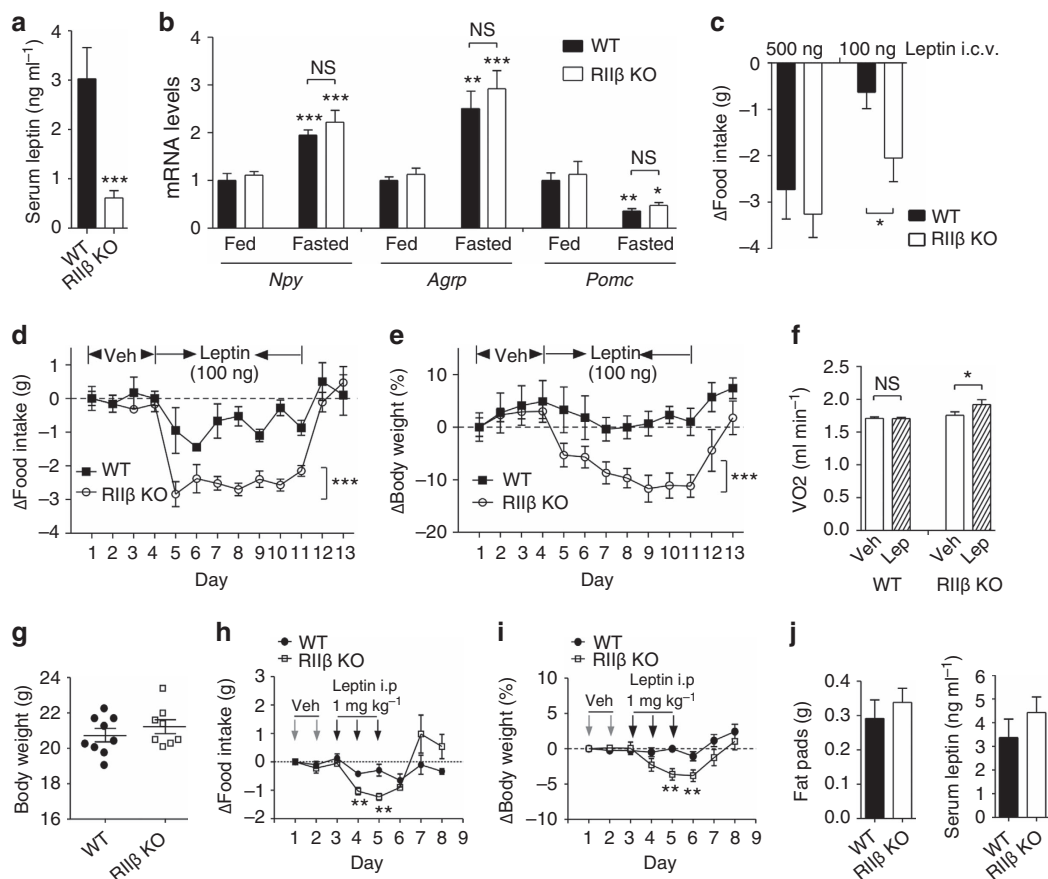


Figure 1 | RIIβ KO mice show enhanced response to leptin. (a) Serum leptin levels of 12-week-old age-matched male wild-type (WT) ($n = 7$) and RIIβ KO mice ($n = 9$). (b) Hypothalamic *Npy* (fed WT $n = 6$, KO $n = 8$; fasted WT $n = 11$, KO $n = 11$), *Agrp* (fed WT $n = 5$, KO $n = 5$; fasted WT $n = 11$, KO $n = 11$) and *Pomc* mRNA (fed WT $n = 6$, KO $n = 8$; fasted WT $n = 11$, KO $n = 11$) from fed and fasted male WT and RIIβ KO mice. Messenger RNA values were determined by quantitative reverse transcription-PCR and standardized to *LepRb* mRNA. Fed WT mice were set at one in all cases. For each group of mice, $n = 5$ –11. (c) 24-h food intake change in male WT ($n = 5$) and RIIβ KO mice ($n = 5$) in response to 500 or 100 ng leptin i.c.v. administration into the third ventricle. (d) Changes in daily food intake and (e) body weight of male WT ($n = 7$) and RIIβ KO ($n = 11$) mice over 13 days following vehicle or leptin i.c.v. injections as indicated. Statistical significance was determined by analysis of variance (ANOVA). (f) Oxygen consumption of male WT ($n = 5$) and RIIβ KO mice ($n = 8$) following vehicle or leptin i.c.v. injection. (g–j) Body weight-matched (g) WT (20.7 ± 0.4 g, 4-week-old, $n = 9$) and RIIβ KO (21.2 ± 0.4 g, 6-week-old, $n = 8$) male mice were selected for leptin injections. (h) Changes in daily food intake and (i) body weight of WT and RIIβ KO mice over 8 days following vehicle or leptin i.p. injections as indicated. (j) Fat pads weight and serum leptin levels were collected and assessed after the experiments. Data are expressed as mean \pm s.e.m. Two-way ANOVA was used for the effect of genotypes followed by Bonferroni's *post hoc* tests or Student's *t*-tests ($^*P < 0.05$, $^{**}P < 0.01$, $^{***}P < 0.001$). NS, not significant.

Leptin activation of PI3K/Akt pathway is regulated by PKA.

Leptin also activates the PI3K/Akt pathway in several regions of the hypothalamus including the ARC triggering Akt-dependent phosphorylation and inhibition of the transcription factor, FoxO1. FoxO1 binds to the *Pomc* promoter and antagonizes the action of STAT3 leading us to ask whether this leptin receptor signalling pathway was also enhanced in RIIβ KO mice. Phosphorylation of FoxO1 by Akt triggers nuclear exclusion and proteosomal degradation of phospho-FoxO1 (refs 20,21). To explore the effect of low leptin on ARC FoxO1 localization we administered leptin to fasted animals at 100 ng per mouse, i.c.v. and examined FoxO1 by immunohistochemistry. In fasted animals, FoxO1 was predominantly nuclear in the ARC in both WT and KO. Three hours after leptin treatment, FoxO1 remained nuclear in WT ARC neurons but became diffusely associated with the cytoplasm in many of the ARC neurons of RIIβ KO mice (Fig. 2f). We measured hypothalamic FoxO1 mRNA and protein levels and found that both were significantly decreased in the hypothalamus of RIIβ KO mice compared with WT controls (Fig. 3a–c). A higher basal level of activated Akt (phospho-Akt (T³⁰⁸)) was

observed in fasted RIIβ KO hypothalamus compared with WT control and after leptin stimulation hypothalamic pAkt was markedly increased in both WT and RIIβ KO mice as expected (Fig. 3b,c). Taken together, these data indicate that RIIβ KO mice have an increased response to leptin through both the JAK2/STAT3 and Akt/FoxO1 signalling pathways in the hypothalamus.

Regulation of *LepRb* signalling by PKA is cell autonomous.

The increased duration of STAT3 and FoxO1 signalling in RIIβ KO hypothalamus after leptin administration is occurring in multiple regions of the hypothalamus including the ARC, DMH, lateral hypothalamus (LH) and VMH. We used two approaches to ask whether the RIIβ–PKA regulation of leptin sensitivity is cell autonomous. We injected AAV-Cre into one side of the ventral hypothalamus of RIIβ^{lox/lox} mice to activate RIIβ expression (Fig. 4a and Supplementary Fig. 1a,b). STAT3 phosphorylation in the ARC was similar between the AAV-Cre-injected side and the saline-injected control side at 1 h after leptin injection (Fig. 4b) and many cells showed co-expression of Cre

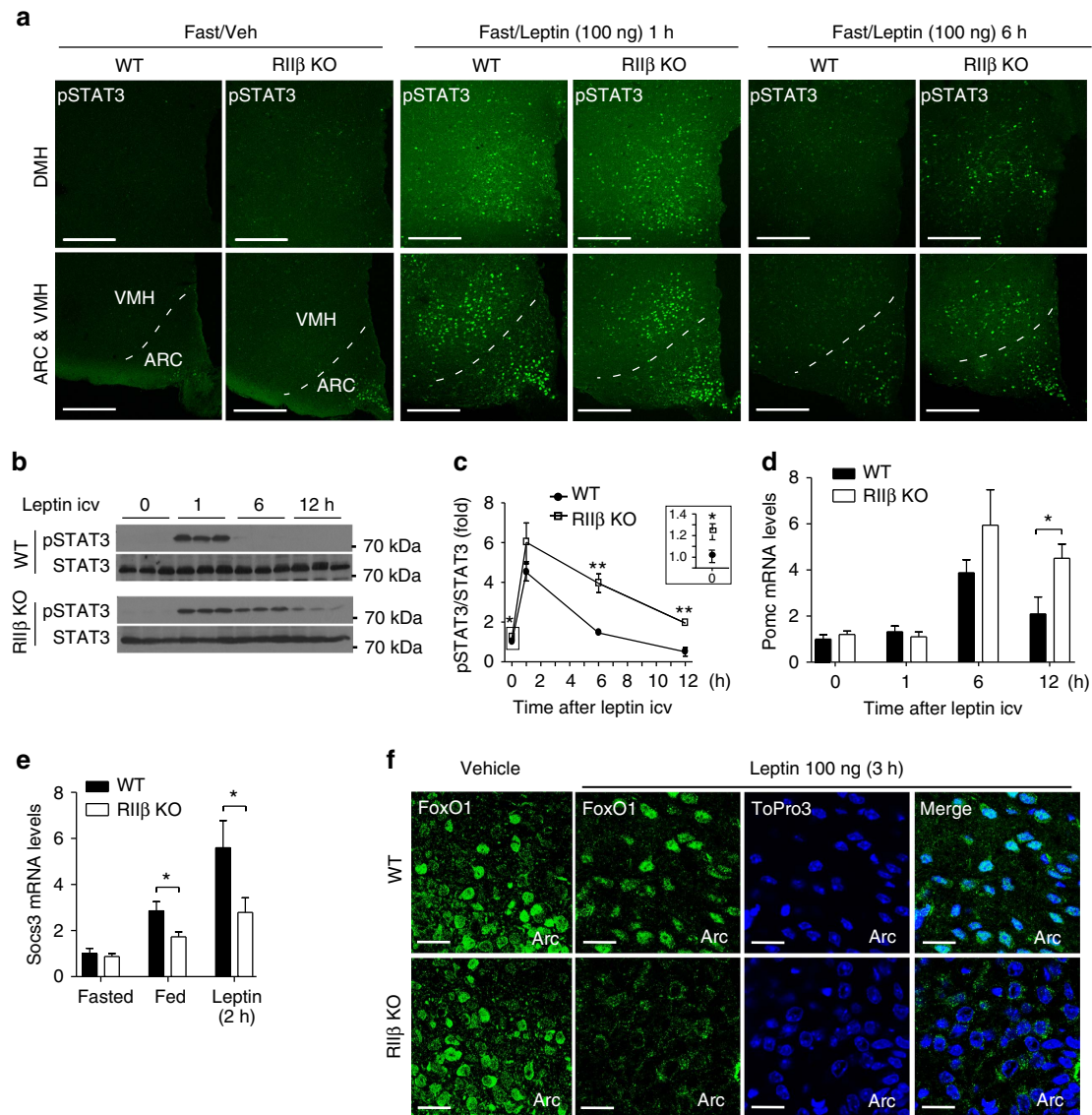


Figure 2 | Enhanced leptin-induced STAT3 phosphorylation and POMC expression in the hypothalamus of RIIβ KO mice. (a) Representative images of pSTAT3 immunofluorescent staining in hypothalamic regions of fasted (24 h) WT and RIIβ KO mice ($n=3$ for each group) with vehicle or leptin i.c.v. injections at different time points. pSTAT3, tyrosine⁷⁰⁵-phosphorylated STAT3. ARC, arcuate nucleus; VMH, ventromedial hypothalamic nucleus; DMH, dorsomedial hypothalamic nucleus. Scale bars, 200 μ m. (b) Representative immunoblots of pSTAT3 (from five mice per group in three independent experiments) with hypothalamic lysates from WT and RIIβ KO mice at different time points after 100 ng leptin (1, 6 and 12 h) or vehicle i.c.v. injection (0 h). Each lane represents one mouse. (c) STAT3 phosphorylation normalized to total STAT3 levels quantified by densitometry. For each treatment group, $n=5$. Inset shows the initial difference in STAT3 phosphorylation of fasted mice. Prior to leptin treatment animals were fasted for 24 h. (d) Hypothalamic Pomc mRNA from WT and RIIβ KO mice treated with vehicle (0 h) or leptin (100 ng, i.c.v.). Animals (males) were fasted for 24 h prior to treatment. N values for WT:KO were 0 h (6:6), 1 h (4:4), 6 h (7:8) and 12 h (8:9). (e) Hypothalamic Soc3 mRNA for WT and RIIβ KO mice that were fasted for 24 h and then either re-fed for 6 h or treated with leptin as indicated. N values for WT:KO were fasted (12:12), fed (7:9) and leptin 2 h (8:8). (f) Representative images of FoxO1 immunostaining in the ARC of vehicle or leptin-treated (100 ng leptin i.c.v., 3 h) WT and RIIβ KO mice ($n=3$ per genotype for each treatment). RIIβ KO mice showed enhanced leptin-induced FoxO1 exclusion from the nucleus and degradation. ToPro3 was used to visualize the cell nucleus. Scale bars, 20 μ m. Male mice were used in these studies. Data are presented as mean \pm s.e.m. and two-way analysis of variance was followed by Bonferroni's *post hoc* test to determine significance (* $P<0.05$, ** $P<0.01$.) Full blots are shown in Supplementary Fig. 3.

and pSTAT3 (Supplementary Fig. 1a), indicating that Cre expression and Cre-induced RIIβ re-expression did not affect the acute response to leptin. However, at 4 h after leptin injection, STAT3 phosphorylation was decreased in Cre-expressing cells but still robustly present in cells without Cre expression (Fig. 4a,b). As a second approach, we activated RIIβ re-expression in all GABAergic neurons by crossing the RIIβ^{lox/-} mice to a Vgat-Cre transgenic line²², which activated RIIβ expression in multiple hypothalamic nuclei except the primarily glutamatergic

paraventricular nucleus (PVN), VMH¹⁵ and non-GABAergic neuronal populations in the ARC (Supplementary Fig. 1c). As shown previously, the Vgat-Cre/RIIβ^{lox/-} (RIIβ^{Vgat}) mice are rescued to WT adiposity and leptin levels¹⁵. In the ARC, DMH and LH of RIIβ^{Vgat} mice, RIIβ was re-expressed in most leptin-responsive neurons as indicated by co-localization with leptin-induced pSTAT3 expression (Supplementary Fig. 1d). At 1 h after leptin injection (1 mg kg⁻¹, i.p.) to the RIIβ^{Vgat} mice, pSTAT3 staining was evident in all the hypothalamic regions. However, at

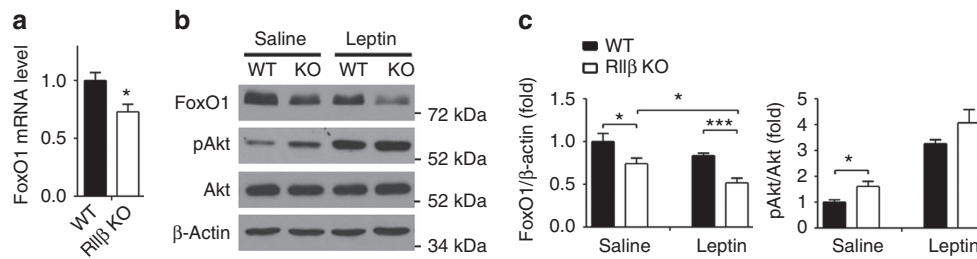


Figure 3 | Decreased FoxO1 level in the hypothalamus of RIIβ KO mice. (a) mRNA levels of FoxO1 in the hypothalamus of WT and RIIβ KO mice (WT, $n = 14$; RIIβ KO, $n = 17$, all male). (b) Representative immunoblots of hypothalamic FoxO1 and pAkt (Thr308) in fasted (24 h) WT and RIIβ KO mice after saline or leptin injection. Saline or leptin (1 mg kg^{-1} body weight) was injected i.p. 30 min before mice were killed and the hypothalami were dissected and processed for western blot. (c) Quantification of protein levels of FoxO1 and pAkt by normalization to β -actin and total Akt, respectively. N values for WT:KO mice were FoxO1 saline (5:5), leptin (4:5) and pAkt/Akt saline (5:5). Values represent mean \pm s.e.m. * $P < 0.05$, *** $P < 0.001$ by Student's t -tests. Full blots are shown in Supplementary Fig. 3.

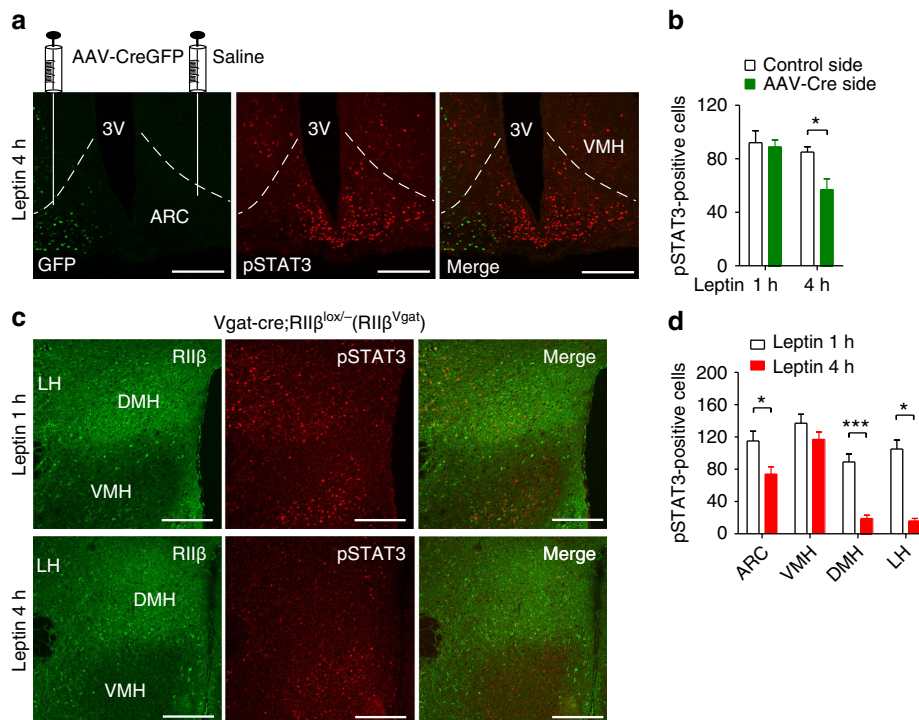


Figure 4 | RIIβ re-expression in the hypothalamus reverses the prolonged leptin-induced pSTAT3 signalling. (a) Representative images (two or more sections from two to three mice) of CreGFP fluorescence and pSTAT3 immunofluorescent staining in the ventral hypothalamus from RIIβ^{lox/lox} mice injected with AAV1-CreGFP unilaterally and 4 h following leptin i.p. injection (1 mg kg^{-1}). Both CreGFP and pSTAT3 were localized to cell nucleus. 3V, third ventricle; ARC, arcuate nucleus; VMH, ventromedial hypothalamic nucleus. Scale bars, 200 μm . (b) Quantification of pSTAT3-positive cells in the ARC side with AAV-CreGFP infection and in the saline-injected control side from mice 1 and 4 h following leptin i.p. injection (1 mg kg^{-1}). Multiple sections from two mice (1 h) and three mice (4 h) were counted and averaged, and presented as cells per section. (c) Representative images of RIIβ and pSTAT3 immunofluorescent staining in the hypothalamus from RIIβ^{Vgat} mice 1 and 4 h following leptin i.p. injection (1 mg kg^{-1}). Scale bars, 200 μm . (d) Quantification of pSTAT3-positive cells in hypothalamic regions ARC, VMH, DMH and lateral hypothalamus (LH) from RIIβ^{Vgat} mice 1 and 4 h following leptin i.p. injection as shown in c and Supplementary Fig. 1e. Sections from three mice per group were counted and averaged and presented as cells per section. Data were presented as mean \pm s.e.m. and analysed by two-tail Student's t -test (* $P < 0.05$, *** $P < 0.001$).

4 h after leptin injection, most of the pSTAT3 signals disappeared in the DMH and LH but remained high in the VMH where RIIβ was not re-expressed (Fig. 4c,d). In the ARC, the number of pSTAT3-positive cells was significantly decreased at 4 h after leptin but there were still a significant number of pSTAT3-positive cells (Fig. 4d) but many of them were negative for RIIβ staining and therefore not expressing Vgat-Cre (Supplementary Fig. 1e). Our data demonstrates that RIIβ–PKA negatively regulates the duration of leptin-induced pSTAT3 signalling in hypothalamic neurons and that the enhanced leptin sensitivity in

RIIβ KO neurons is cell autonomous and likely the cause rather than the effect of the lean phenotype.

RIIβ–PKA is activated during a fast. To determine if RIIβ–PKA is physiologically responding to nutritional signals in leptin receptor-expressing neurons as might be expected if it is regulating leptin sensitivity, we examined hypothalamic RIIβ localization and activation in fed and fasted WT mice. After a 1-h leptin treatment, pSTAT3-positive neurons were shown by

immunohistochemistry to be co-expressing RII β (Fig. 5a). It has been suggested that RII β autophosphorylation at Ser114 occurs in the inactive PKA holoenzyme but does not lead to dissociation of the R/C complex²³. Consistent with this observation, we found that activation of PKA in hypothalamic extracts by the cAMP analogue, 8-Br-cAMP, resulted in dephosphorylation of P-Ser₁₁₄ on RII β and this was blocked by phosphatase inhibitors (Supplementary Fig. 2a). This allows us to directly monitor the

nutritional activity of RII β -PKA by western blot and immunohistochemistry with pRII β ^{S114} indicating inactive PKA and loss of pRII β ^{S114} as an indication of cAMP activation. As shown in Fig. 5b, a 24-h fast leads to the depletion of pRII β ^{S114} while 2-h re-feeding greatly increases pRII β ^{S114}, suggesting that hypothalamic RII β -PKA is activated during fasting and inactivated after re-feeding. The fast caused an increase in pCREB^{S133} compared with fed or re-fed states (Fig. 5b),

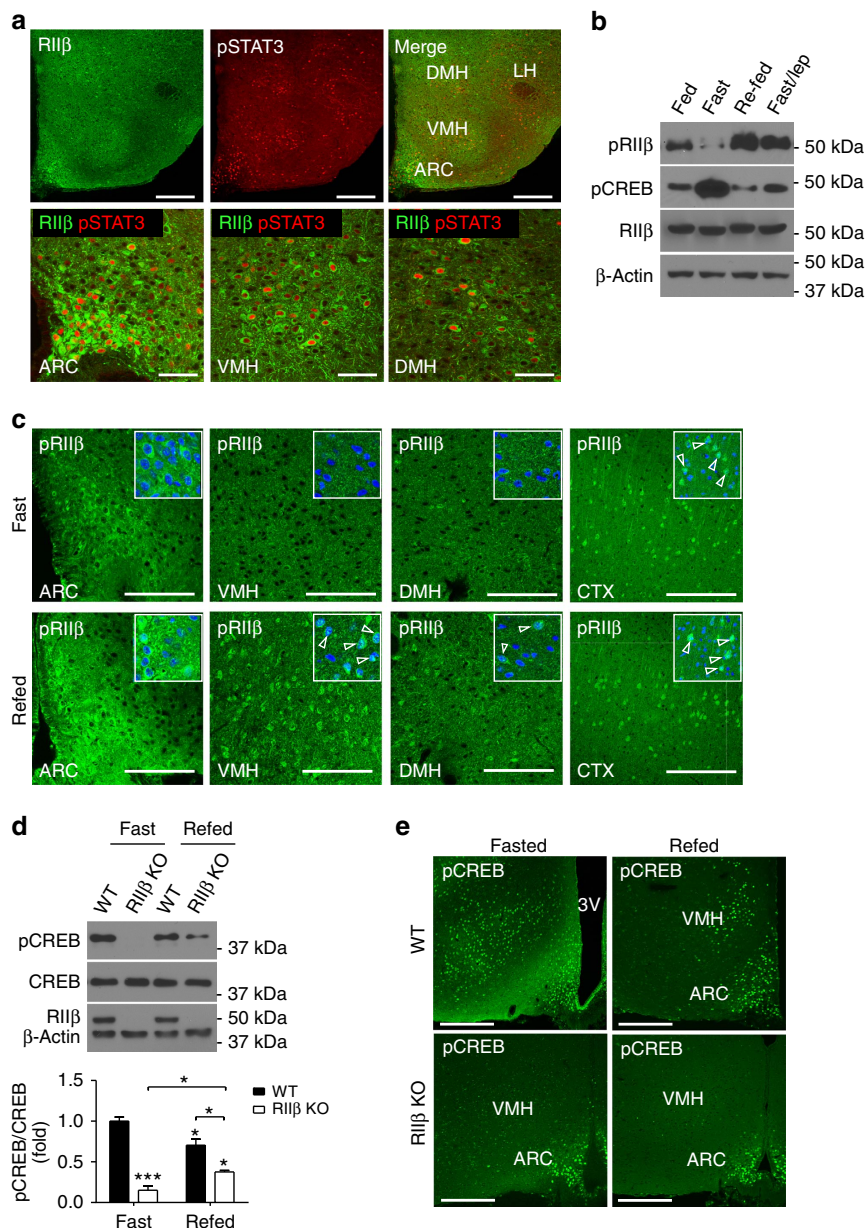


Figure 5 | Hypothalamic RII β -PKA is regulated by feeding states and leptin. (a) Representative images of multiple sections from three mice showing co-immunofluorescent staining of RII β and pSTAT3 in the hypothalamus of WT mice treated with leptin (1 h after leptin i.p. 2.0 mg kg⁻¹). RII β is localized in soma while pSTAT3 is localized in cell nucleus. Scale bars, 200 μ m (upper panel) and 50 μ m (lower panel). (b) Representative western blots (experiment repeated 3 times) of whole hypothalamic pRII β (S114), pCREB (S133), RII β and β -actin from fed, 24-h fast, 24-h fast + 2-h re-feeding and 24-h fast + 2-h leptin treatment (3 mg kg⁻¹ BW, i.p.) of WT mice. (c) Representative images of pRII β immunofluorescent staining in hypothalamic regions of 24-h fasted WT mice ($n = 3$) with or without 2-h re-feeding. ARC, arcuate nucleus; VMH, ventromedial hypothalamic nucleus; DMH, dorsomedial hypothalamic nucleus. pRII β immunostaining in the cortex (CTX) was shown as internal control. Insets show the co-staining of neurons for pRII β and a marker for nuclear DNA (ToPro3) as indicated by arrowheads. Scale bars, 100 μ m. (d) Representative western blots and the quantification of hypothalamic pCREB from fed, 24 h fasted, and 2 h re-fed WT and RII β KO mice. Total CREB, RII β and β -actin were blotted as internal control ($n = 3$ for each condition and genotype). Data are presented as mean \pm s.e.m. and analysed by two-tailed Student's t -test ($*P < 0.05$, $***P < 0.001$). (e) Representative immunofluorescent staining of pCREB (S133) in the hypothalamus of 24-h fasted WT and RII β KO mice with or without 2-h re-feeding (three animals for each condition and genotype). Scale bars, 200 μ m. Full blots are shown in Supplementary Fig. 3.

consistent with previous findings²⁴. Immunostaining of pRII β ^{S114} showed that it was increased in multiple hypothalamic nuclei including the ARC, VMH and DMH in re-fed mice compared with fasted mice (Fig. 5c). As an internal control, the level of pRII β ^{S114} in the cortex is not changed during fasting and re-feeding (Fig. 5c). We also tested whether leptin could substitute for re-feeding and reverse the activation state of RII β -PKA; we were surprised to find that a 2-h treatment with leptin mimicked re-feeding and caused an increase in pRII β ^{S114} and returned pCREB to fed levels (Fig. 5b). The specificity of anti-RII β and anti-pRII β antibodies for immunohistochemical staining was verified by staining of brain sections from RII β KO mice (Supplementary Fig. 2b,c). We conclude that the RII β -PKA holoenzyme is actively expressed in leptin-responsive neurons and is activated by fasting and inhibited by either re-feeding or leptin treatment.

RII β -PKA regulates CREB phosphorylation during fasting.

The level of pCREB was greatly reduced in the RII β KO compared with age-matched WT under either fasting or re-fed states as determined by western blot (Fig. 5d) and immunohistochemistry (Fig. 5e). To show that this effect is independent of body fat content, we examined hypothalamic pCREB levels using WT (6-week old, body weight: 20.9 \pm 0.51 g) and RII β KO (12-week old, body weight: 23 \pm 0.5 g) mice that had similar fat content as indicated by gonadal fat pads weight. As shown in Supplementary Fig. 2d, pCREB levels were dramatically reduced in RII β KO mice in either fed, fasted or re-fed state compared with fat-matched WT control. In RII β ^{Vgat} mice, which had similar fat content and blood leptin level as age-matched WT mice¹⁵, pCREB expression in response to fasting was decreased in the VMH where the Vgat-Cre is not expressed and therefore RII β is not re-expressed. In contrast, ARC neurons exhibited both RII β and pCREB staining in fasted RII β ^{Vgat} mice (Supplementary Fig. 2e). The co-localization of RII β and pCREB in hypothalamic neurons was shown in the ARC and VMH of fasted WT mice (Supplementary Fig. 2f). These results indicate that the phosphorylation of CREB in response to fasting is dependent on RII β -PKA in a cell-autonomous manner and that pCREB signalling in VMH and other non-GABAergic neurons does not play a major role in the lean phenotype of RII β KO mice. Consistent with the greatly attenuated pCREB expression, the protein levels of PKA C subunits (including C α , C β 1 and C β 2) (Supplementary Fig. 2g) and total PKA activity (Supplementary Fig. 2h) were significantly decreased in the hypothalamus of RII β KO mice, indicating that RII β is one of the major PKA isoforms in mouse hypothalamus.

Inhibition of PKA in AgRP neurons causes leanness. AgRP neurons in the arcuate nucleus represent only a fraction of the GABAergic neurons in the hypothalamus but they play an essential role in the regulation of energy balance in adult mice^{22,25}. We next asked whether impaired PKA signalling in AgRP neurons would have an effect on body composition. We generated mice with selective expression of a dominant negative PKA subunit allele (RI α B) in AgRP neurons. The dominant negative RI α B allele was generated as a knock-in mutation in *Prkar1a* that was silenced by a lox-flanked intragenic neo-stop sequence^{26,27}. Expression of RI α B protein in AgRP neurons was initiated by Cre recombinase-dependent excision of the neo-stop sequence in *Agrp-CreEGFP*-expressing mice²⁸. These *Agrp-CreEGFP/RI α B* mice are referred to as RI α B-On. The localization of Cre expression in the ARC was visualized by the fluorescence of EGFP fused to the Cre (Fig. 6a, left). *Agrp-CreEGFP*-mediated recombination has been shown to be specific

to AgRP neurons in the hypothalamus²⁸. By crossing the *Agrp-Cre* mouse to a tdTomato reporter mouse line²⁹, we could observe Cre-activated tdTomato expression in AgRP but not in adjacent POMC neurons (Fig. 6a, right). RI α B expression significantly suppressed 24-h fasting-induced CREB phosphorylation in AgRP neurons (Fig. 6b,c). Activation of GABAergic AgRP neurons promotes feeding and inhibits energy expenditure at least partially by inhibiting the activity of PVN neurons that express melanocortin receptors^{25,30}. We observed decreased c-Fos-positive cells in the ARC in RI α B-On mice compared with RI α B-Off mice following a 24-h fast (Fig. 6d,e). In contrast, we observed a 1.6-fold increase in c-Fos-positive cells in the PVN of fasted RI α B-On mice (Fig. 6d,e). These results indicated that PKA inhibition in AgRP neurons partially suppressed their activation by fasting and led to increased activity in a subset of PVN neurons. We examined whether RI α B-On mice recapitulated the obesity-resistant phenotype of RII β KO mice¹² by placing them on a high-fat diet for 12 weeks. RI α B-On mice gained significantly less weight on a high-fat diet compared with RI α B-Off and *Agrp-Cre/WT* mice (Fig. 6f). Furthermore, RI α B-On mice had a significant decrease in fat pad weight compared with RI α B-Off and *Agrp-Cre/WT* mice on either chow or high-fat diet (Fig. 6g). These results demonstrate that PKA inhibition in AgRP neurons partially mimics the leanness of RII β KO mice. However, our previous studies demonstrate that re-expression of RII β only in AgRP neurons did not reverse the lean phenotype of RII β KO mice¹⁵, suggesting that normal PKA signalling in AgRP neurons is required but not sufficient to keep adiposity at WT level.

Discussion

In this report, we show that RII β -PKA is a major PKA isoform in the LepR-expressing neurons of the hypothalamus and is being regulated by fasting and re-feeding. RII β deficiency leads to impaired PKA signalling, inhibition of pCREB induction during a fast and an increased duration of LepRb signalling through both the pSTAT3 and FoxO1 pathways in the hypothalamus. The extended duration of LepRb signalling in the RII β KO hypothalamus leads to an increase in the catabolic effects of low doses of leptin on feeding, energy expenditure and body weight. The ability of leptin to induce a major negative feedback regulator of LepRb signalling, *Socs3*, is inhibited in the RII β KO. An attractive hypothesis is that cAMP activation of RII β -PKA plays a synergistic role in the induction of *Socs3* by pSTAT3, perhaps by phosphorylation of CREB (Fig. 7). The *Socs3* promoter contains CRE elements that bind CREB³¹ and *Socs3* can be induced in hypothalamic cell lines by cAMP^{32,33}. Furthermore, the leanness and elevated leptin sensitivity of RII β KO mice resembles the phenotype of mice with either a neuron-specific KO of *Socs3* (ref. 34) or global haploinsufficiency of *Socs3* (ref. 35). This defective CREB signalling might also contribute to the decreased transcription of FoxO1 in RII β KO mice (Fig. 3a) since a recent study showed that PKA/CREB/p300 signalling promoted the expression of FoxO1 (ref. 36). The increase in leptin sensitivity we see in the RII β KO hypothalamus occurs in all regions where the LepRb is expressed including the ARC, VMH, DMH and LH. We have shown previously that re-expressing RII β in just the AgRP or POMC neurons of the ARC is not sufficient to reverse the lean phenotype. However re-expression of RII β selectively in GABAergic neurons with Vgat-Cre does reverse the lean phenotype¹⁵ and yet the glutamatergic neurons in the VMH remain deficient in RII β and continue to be hypersensitive to leptin (Fig. 4). In the ARC of RII β ^{Vgat} mice, a significant number of neurons show prolonged leptin-induced pSTAT3 activation and are negative for RII β

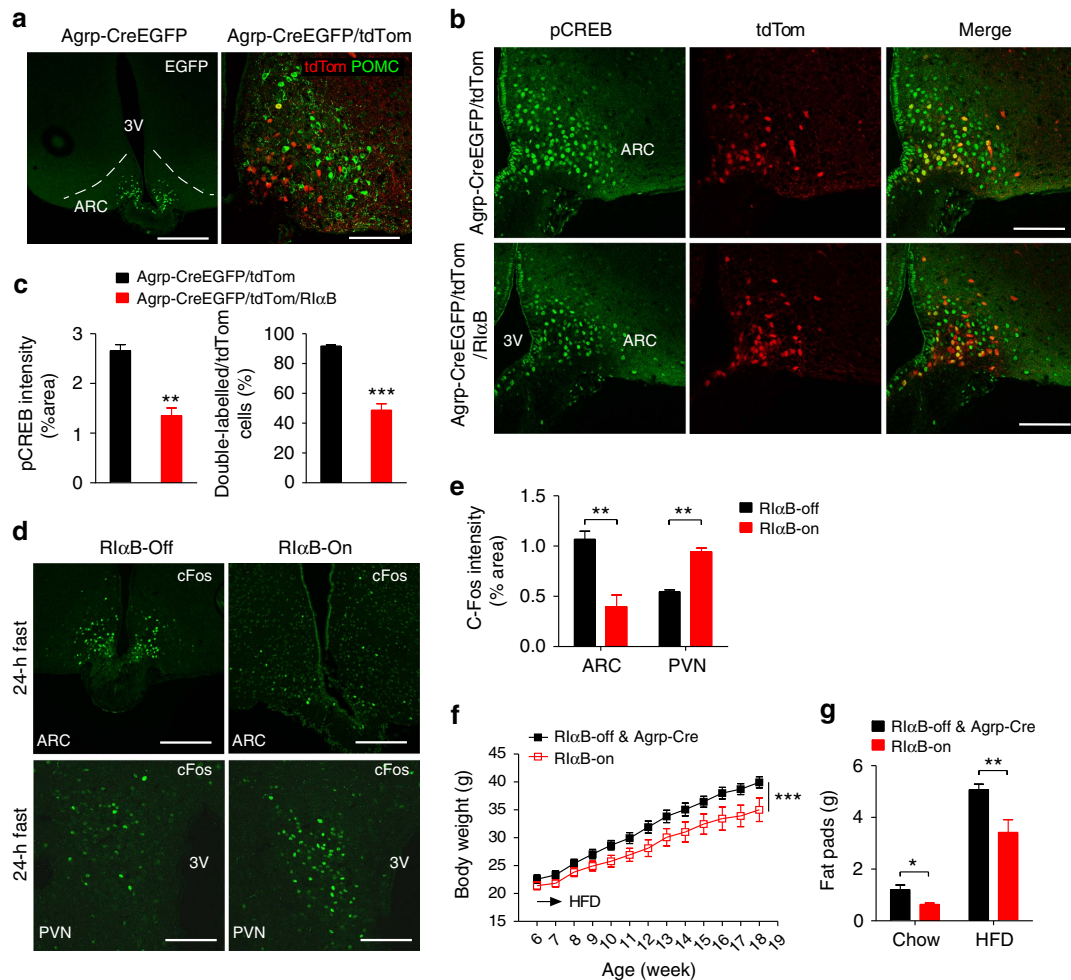


Figure 6 | Mice with selective inhibition of PKA in AgRP neurons have reduced adiposity. (a) EGFP-labelled Cre expression in the hypothalamus of Agrp-CreEGFP mice (left: scale bar, 400 μ m) and tdTomato expression and immunofluorescent staining of POMC in the ARC of Agrp-Cre/tdTom mice (right: scale bar, 100 μ m). (b) Representative images of pCREB(S133) immunostaining in the ARC of Agrp-Cre/tdTom and Agrp-Cre/tdTom/Rl α B mice following a 24-h fast. Scale bars, 100 μ m, $n=3$ mice for each genotype. (c) Quantification of pCREB staining intensity (left) and ratio of AgRP neurons (as indicated by tdTomato) that express pCREB (right) in the ARC of Agrp-Cre/tdTom and Agrp-Cre/tdTom/Rl α B mice as shown in b. $N=3$ mice for each genotype. (** $P<0.01$, *** $P<0.001$ by two-tailed Student's t -tests). (d,e) Representative immunohistochemistry (d) and quantification (e) of c-Fos expression in Rl α B-Off (left) and Rl α B-ON (right) mice after a 24-h fast in the ARC (scale bars, 200 μ m) and PVN (scale bars, 100 μ m) of the hypothalamus. $N=3$ for each genotype. (f) Body weight changes of Agrp-Cre and Rl α B-Off mice ($n=9$) and Rl α B-On mice ($n=6$) on high-fat diet (HFD) from 6 week of age for 12 weeks. *** $P<0.001$ between genotypes by two-way analysis of variance. (g) Weight of major fat pads (gonadal, retroperitoneal and inguinal) of Agrp-Cre mice, Rl α B-Off mice and Rl α B-On mice fed either on chow diet ($n=5$ per group) or HFD (as shown in f) at 18–19 weeks of age. Data are presented as mean \pm s.e.m. and analysed by two-tailed Student's t -test (* $P<0.05$, ** $P<0.01$, *** $P<0.001$).

staining (Fig. 4d and Supplementary Fig. 1d). These RII β -negative neurons are likely to be the leptin-responsive glutamatergic POMC neurons²² that would not be expected to re-express RII β in the RII β ^{Vgat} animals. These observations demonstrate that PKA signalling interacts with LepRb signalling in a cell-autonomous manner. We have not yet been able to identify the specific subset of GABAergic neurons in the hypothalamus that are responsible for the effects of RII β disruption on body weight regulation. It seems likely that these neurons are the same as those primary leptin-responsive neurons, still unidentified, which account for the majority of the effects of leptin on feeding and energy metabolism.

Although GABAergic neurons regulate the majority of leptin's effects on body weight, leptin signalling in other neuronal types such as glutamatergic neurons in the VMH also contributes to the regulation of body weight³⁷ and other metabolic processes including glucose homeostasis^{37,38} and bone metabolism³⁹. We showed previously that RII β -PKA re-expression in

SF1-expressing VMH neurons does not significantly restore the adiposity of RII β KO mice¹⁵. However, it is possible that RII β -PKA in the VMH might affect the susceptibility to diet-induced obesity or glucose homeostasis¹². In addition to its role in leptin signalling, hypothalamic PKA is also a downstream effector of other metabolic signals such as glucagon like peptide (GLP1) and glucagon, which are implicated in the neuronal regulation of hepatic glucose production⁴⁰. It is likely that RII β -PKA is playing other roles in overall metabolic regulation in addition to its effects on leptin signalling and adiposity focused in this report.

Recently it was reported that cAMP promotes leptin resistance by activating the Epac/Rap1 signalling pathway and increasing Socs3 expression. These authors provided evidence that the pharmacological inhibition of PKA with H89 did not prevent the forskolin-induced increase in Socs3 mRNA and protein⁴¹. Our studies used mouse genetic approaches to inhibit the PKA pathway and this led to an increase in leptin sensitivity and resistance to diet-induced obesity. It is likely that both PKA and

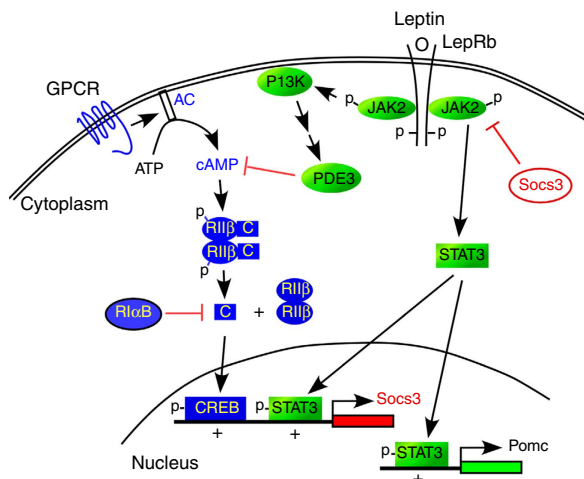


Figure 7 | Model depicting the crosstalk between PKA and leptin signalling in hypothalamic neurons. During a fast, PKA is activated by nutritional signals acting through an unidentified Gs-coupled GPCR pathway. PKA activation leads to phosphorylation of CREB, which promotes *Socs3* transcription when pSTAT3 is present. In the fed state, leptin is increased and stimulates the phosphorylation of STAT3. Leptin may also stimulate the activation of a phosphodiesterase leading to the degradation of cAMP. pSTAT3 and pCREB synergistically induce *Socs3* transcription and production of the negative regulator of JAK2 kinase activity. RIIβ – PKA deficiency or expression of the dominant negative PKA allele, RIαB, disrupts basal and fasting-induced CREB phosphorylation inhibiting *Socs3* induction and enhancing leptin signalling in the hypothalamus.

Epac/Rap1 signalling pathways are being co-regulated during fasting and re-feeding as cAMP levels change in response to metabolic signals and perhaps the relative contribution of the two cAMP effector pathways depends on both the level of cAMP and the intracellular localization of the cAMP effector.

Elevated leptin sensitivity would be expected to lead to a decrease in adiposity and circulating leptin just as we see in the RIIβ KO mice. The elevated leptin sensitivity of RIIβ KO mice appears to be maintained for the animal's lifetime and their lean phenotype may underlie the increased healthy lifespan of RIIβ KO mice¹³. The nutritional regulators that interact with hypothalamic neurons and regulate the levels of cAMP are unknown. It has been suggested that leptin itself might be capable of affecting cAMP by acting through the Akt pathway to activate PDE3 and cause a decrease in cAMP⁴². It is probable that there are also Gs-coupled GPCR pathways that stimulate adenylyl cyclase activity in LepRb-expressing neurons. A more detailed understanding of the crosstalk between the cAMP and LepRb signalling pathways may suggest a strategy for increasing leptin sensitivity therapeutically.

Methods

Mice. RIIβ^{lox/lox} and RIIβ^{Vgat} mice were generated and characterized as described previously¹⁵. We have deposited the RIIβ^{lox/lox} mice in the Mutant Mouse Regional Resource Center (MMRRC) Stock No. 036960-UCD and the RIIβ^{Vgat} mice were generated by crossing the RIIβ^{lox/lox} mice with *Vgat-Ires-Cre* mice sent to us by Brad Lowell (Harvard University). *AgRP-CreEGFP* mice were provided by Richard Palmiter (University of Washington). Conditional RIαB mice were described previously^{26,27} and are available as Stock No. 032879-UCD from the MMRRC. All strains were on a C57Bl/6 background. The mice were fed standard chow (Picolab mouse diet 20) or high-fat diet (Research Diets #D12492) and had free access to water. Mice were housed at 22–24 °C with a 12-h light/dark cycle and were individually housed for studies of food intake, energy expenditure and, after implantation of cannulas, for stereotactic injections. Otherwise, mice were group housed (two to five animals per cage). The number of mice used in each experiment was chosen based on the expected variance of the measurements to be used and a power analysis that would allow detection of at least a 30% change in

values with a $P < 0.05$. All procedures were approved by the Institutional Animal Care and Use Committee of the School of Medicine of the University of Washington.

Leptin administration. Recombinant mouse leptin was obtained from Dr Parlow (Harbor-UCLA Medical Center, CA). Age-matched male WT and RIIβ KO mice (8–10-week old) were anesthetized and implanted with a cannula (Plastics One) into the third ventricle at the midline coordinates of 0.5 mm posterior to the bregma and 3.0 mm below the surface of the skull. After cannulation, mice were individually housed with free access to food and water, and body weight and *ad libitum* food intake were measured daily. After at least 1 week recovery from the surgery, 1 μl vehicle (artificial cerebrospinal fluid) with or without leptin was injected through the cannula into the third ventricle once a day between 1700 to 1900 hours (0–2 h before the start of dark phase). Daily food intake and body weight were measured at the time of injections. For oxygen consumption, mice were injected i.c.v. with vehicle or leptin at 1200 to 1300 hours and, 20 min later, put in the Oxymax metabolic chamber (Columbus Instruments) at room temperature for VO₂ measurements for 2 h. The chamber was 4 × 8 inches, allowing limited locomotion, and the entire apparatus was housed in an isolated room away from other animals and stimuli. Air flow to the cage was 500 ml min⁻¹ as previously described⁴³. For each mouse, vehicle and leptin were injected on different days and VO₂ was compared. Body weight-matched male WT and RIIβ KO mice were used for leptin sensitivity study with i.p. injections between 1700 to 1900 hours. The mice were killed after the experiments and the major fat pads including gonadal, inguinal and retroperitoneal fat pads were isolated and weighed; the blood was collected for serum leptin assay.

AAV-Cre-mediated RIIβ expression. Recombinant adeno-associated virus (AAV1-CreGFP) was kindly provided by Richard Palmiter (the University of Washington). Male RIIβ^{lox/lox} mice at 8 weeks of age were anesthetized and used for Cre virus injection (1×10^9 genomic particles per μl per site) into the ventral hypothalamus (1.4 mm posterior to the bregma, 0.5 mm lateral to the midline, 5.8 mm below the bregma) with a 10 μl Hamilton syringe attached to a Micro4 Micro Syringe Pump Controller (World Precision Instruments). After injection, the mouse was housed individually with free access to food and water. At least 10 days after AAV injection, mice were fasted overnight and leptin was injected (1 mg kg⁻¹, i.p.). Mice were killed and perfused for pSTAT3 immunofluorescent staining at 1 or 4 h after the injection. AAV-Cre-induced RIIβ expression was determined by immunohistochemistry.

Quantitative reverse transcription-PCR assay. We isolated total RNA from the hypothalamus using Trizol (Invitrogen). RNA concentration was determined by RiboGreen assay. SYBR Green PCR Master Mix was used for quantitative reverse transcription-PCR. LepRb mRNA level was determined using the primers shown in Supplementary Table 1 and characterized previously⁴⁴. The data were normalized to either β-actin or *Gapdh*. No difference was observed between LepRb mRNA levels in WT and RIIβ KO mice. mRNA levels of *AgRP*, *Npy*, *Pomc*, *Socs3* and *FoxO1* were all normalized to LepRb mRNA content and expressed as a percentage change from corresponding WT control. Primers for *AgRP*, *Npy*, *Pomc*, β-actin, *Socs3* and *FoxO1* are shown in Supplementary Table 1.

Western blot and immunohistochemistry. Western blots and immunohistochemical staining were performed as described previously¹⁵. Briefly, mice were killed by CO₂. The hypothalamus (wet weight ~10 mg) was quickly dissected and snap-frozen in liquid nitrogen and saved at -80 °C for later processing. The tissue was homogenized in 200 μl lysis buffer (50 mM Tris-Cl, pH 7.4, 150 mM NaCl, 5 mM EDTA, 1% Triton X-100, 0.5% deoxycholic acid) supplemented with protease and phosphatase inhibitors (5 mM NaF, 1 mM Na₃VO₄, PhosStop (Roche), cComplete Ultra protease inhibitors (Roche), sonicated and cleared by centrifugation (12,000g, 4 °C, 10 min). Protein concentration in the supernatant was determined by BCA assay (Pierce; 23227). About 10–20 μg of protein in 1 × SDS sample buffer (62.5 mM Tris-Cl (pH 6.8), 2% (wt/vol) SDS/5% glycerol/0.05% (wt/vol) bromophenol blue) was loaded per lane and separated by 10% SDS-PAGE and transferred to nitrocellulose membrane by electrophoresis for further blotting. For *in vitro* PKA activation, the WT hypothalamus was homogenized in 200 μl lysis buffer (50 mM Tris-HCl, pH 7.4, 150 mM NaCl, 1% Triton X-100, cComplete Ultra protease inhibitors) and cleared by centrifugation. The supernatants were incubated at 37 °C for 10 min with or without 8-Br-cAMP (150 μM), phosphodiesterase inhibitor IBMX (3-isobutyl-1-methylxanthine; 1 mM) and protein phosphatase inhibitors (2 × PhosStop). The samples were then mixed with 2 × SDS sample buffer and heated (95 °C, 5 min) for SDS-PAGE and anti-pRIIβ and anti-pCREB immunoblotting. For immunohistochemistry, adult mice were anesthetized with pentobarbital and transcardially perfused with PBS followed by ice-cold PBS-buffered 4% paraformaldehyde. Brains were removed and postfixed for 2 h followed by cryopreservation in 30% sucrose solution (w/v) overnight and subsequent freezing in OCT compound (Tissue-Tek). Cryosections (20 μm) were taken on a cryostat and allowed to air dry on slides, followed by immediate processing or preservation at -80 °C. The total PKA activity in hypothalamic extracts of WT and RIIβ KO mice was measured using Kemptide

(Sigma) as a substrate and ^{32}P - γ -ATP as the phosphate donor as described previously²⁷. Briefly, PKA assays were performed in duplicate using 10 μl aliquots of each protein sample (1 mg ml⁻¹) and 25 μl of reaction mix (20 mM Tris buffer (pH 7.4), 200 μM ATP, 10 mM MgAcetate, 20 μM Kemptide, 0.5 mM IBMX, 10 mM dithiothreitol, 5 mM sodium fluoride and 0.045 mCi ml⁻¹ ^{32}P - γ -ATP. The reaction proceeded for 5 min at 30 °C and was stopped by spotting a 25 μl aliquot onto phosphocellulose paper, which was immersed immediately in ice-cold 75 mM phosphoric acid. The filters were washed four times with phosphoric acid at room temperature, immersed in 95% ethanol and air-dried. The dried filters were placed in scintillation vials with ScintVerse (Fisher, Fair Lawn, NJ) and ^{32}P -incorporation was quantified using a Beckman scintillation counter.

For pSTAT3 immunostaining, a 15-min pretreatment of the sections with 1% NaOH is required. Quantification of blots and staining intensity was obtained using ImageJ. Primary antibodies used in the study were: anti-pRII β (S114) (BD Biosciences, #612550); anti-RII β (BD Biosciences, #610626); anti-pSTAT3 (Y705) (Cell Signaling, #9131); anti-STAT3 (Cell Signaling #9132); anti-FoxO1 (Cell Signaling, #2880); anti- β -actin (Sigma, #A5316); anti-pAkt (Cell Signaling, #9275) and anti-Akt (Cell Signaling, #9272); anti-RI α (BD Biosciences #610610), anti-RI($\alpha + \beta$) (BD Biosciences #610165), anti-RII α (Santa Cruz, sc-909), anti-C α (provided by Susan Taylor, UCSD), anti-C β (provided by Bjorn Skalhegg, the University of Oslo), anti-pCREB (S133) (Cell Signaling, #9198), anti-CREB (Cell Signaling, #9197) and anti-cFos (Santa Cruz, sc-7202).

Leptin measurements. Mice were killed with CO₂, and whole blood was collected by cardiac puncture. The blood was allowed to clot at room temperature and centrifuged at 12,000 r.p.m. for 2 min. The supernatant serum was collected and saved at -80 °C for leptin assay by ELISA following the manufacturer's protocol (Millipore, Cat# EZML-82 K).

Statistical analyses. Data are expressed as mean \pm s.e.m. GraphPad Prism was used for analysis of variance with Bonferroni's *post hoc* test or two-tailed Student's *t*-test. $P < 0.05$ was considered significant.

References

- Friedman, J. M. & Halaas, J. L. Leptin and the regulation of body weight in mammals. *Nature* **395**, 763–770 (1998).
- Cone, R. D. & Simerly, R. B. Leptin grows up and gets a neural network. *Neuron* **71**, 4–6 (2011).
- Myers, Jr M. G., Munzberg, H., Leininger, G. M. & Leshan, R. L. The geometry of leptin action in the brain: more complicated than a simple ARC. *Cell Metab.* **9**, 117–123 (2009).
- Myers, Jr M. G. & Olson, D. P. Central nervous system control of metabolism. *Nature* **491**, 357–363 (2012).
- Myers, M. G., Cowley, M. A. & Munzberg, H. Mechanisms of leptin action and leptin resistance. *Annu. Rev. Physiol.* **70**, 537–556 (2008).
- Robertson, S. A., Leininger, G. M. & Myers, Jr M. G. Molecular and neural mediators of leptin action. *Physiol. Behav.* **94**, 637–642 (2008).
- Xu, A. W. *et al.* PI3K integrates the action of insulin and leptin on hypothalamic neurons. *J. Clin. Invest.* **115**, 951–958 (2005).
- Brandon, E. P. *et al.* Defective motor behavior and neural gene expression in RIIbeta-protein kinase A mutant mice. *J. Neurosci.* **18**, 3639–3649 (1998).
- Cadd, G. & McKnight, G. S. Distinct patterns of cAMP-dependent protein kinase gene expression in mouse brain. *Neuron* **3**, 71–79 (1989).
- Cummings, D. E. *et al.* Genetically lean mice result from targeted disruption of the RII beta subunit of protein kinase A. *Nature* **382**, 622–626 (1996).
- Planas, J. V., Cummings, D. E., Idzerda, R. L. & McKnight, G. S. Mutation of the RIIbeta subunit of protein kinase A differentially affects lipolysis but not gene induction in white adipose tissue. *J. Biol. Chem.* **274**, 36281–36287 (1999).
- Schreyer, S. A., Cummings, D. E., McKnight, G. S. & LeBoeuf, R. C. Mutation of the RIIbeta subunit of protein kinase A prevents diet-induced insulin resistance and dyslipidemia in mice. *Diabetes* **50**, 2555–2562 (2001).
- Enns, L. C. *et al.* Disruption of protein kinase A in mice enhances healthy aging. *PLoS ONE* **4**, e5963 (2009).
- Czyzyk, T. A., Sikorski, M. A., Yang, L. & McKnight, G. S. Disruption of the RIIbeta subunit of PKA reverses the obesity syndrome of Agouti lethal yellow mice. *Proc. Natl Acad. Sci. USA* **105**, 276–281 (2008).
- Zheng, R. *et al.* Deficiency of the RIIbeta subunit of PKA affects locomotor activity and energy homeostasis in distinct neuronal populations. *Proc. Natl Acad. Sci. USA* **110**, E1631–E1640 (2013).
- Ahima, R. S. *et al.* Role of leptin in the neuroendocrine response to fasting. *Nature* **382**, 250–252 (1996).
- Brandon, E. P., Idzerda, R. L. & McKnight, G. S. PKA isoforms, neural pathways, and behaviour: making the connection. *Curr. Opin. Neurobiol.* **7**, 397–403 (1997).
- Amieux, P. S. *et al.* Compensatory regulation of RIalpha protein levels in protein kinase A mutant mice. *J. Biol. Chem.* **272**, 3993–3998 (1997).
- Adams, M. R. *et al.* Loss of haloperidol induced gene expression and catalepsy in protein kinase A-deficient mice. *Proc. Natl Acad. Sci. USA* **94**, 12157–12161 (1997).
- Aoki, M., Jiang, H. & Vogt, P. K. Proteasomal degradation of the FoxO1 transcriptional regulator in cells transformed by the P3k and Akt oncoproteins. *Proc. Natl Acad. Sci. USA* **101**, 13613–13617 (2004).
- Matsuzaki, H., Daitoku, H., Hatta, M., Tanaka, K. & Fukamizu, A. Insulin-induced phosphorylation of FKHR (Foxo1) targets to proteasomal degradation. *Proc. Natl Acad. Sci. USA* **100**, 11285–11290 (2003).
- Vong, L. *et al.* Leptin action on GABAergic neurons prevents obesity and reduces inhibitory tone to POMC neurons. *Neuron* **71**, 142–154 (2011).
- Zhang, P. *et al.* Structure and allostery of the PKA RIIbeta tetrameric holoenzyme. *Science* **335**, 712–716 (2012).
- Sheriff, S., Chance, W. T., Fischer, J. E. & Balasubramanian, A. Neuropeptide Y treatment and food deprivation increase cyclic AMP response element-binding in rat hypothalamus. *Mol. Pharmacol.* **51**, 597–604 (1997).
- Cansell, C., Denis, R. G., Joly-Amado, A., Castel, J. & Luquet, S. Arcuate AgRP neurons and the regulation of energy balance. *Front. Endocrinol. (Lausanne)* **3**, 169 (2012).
- Willis, B. S., Niswender, C. M., Su, T., Amieux, P. S. & McKnight, G. S. Cell-type specific expression of a dominant negative PKA mutation in mice. *PLoS ONE* **6**, e18772 (2011).
- Yang, L., Gilbert, M. L., Zheng, R. & McKnight, G. S. Selective expression of a dominant-negative type Ialpha PKA regulatory subunit in striatal medium spiny neurons impairs gene expression and leads to reduced feeding and locomotor activity. *J. Neurosci.* **34**, 4896–4904 (2014).
- Sanz, E. *et al.* Fertility-regulating kiss1 neurons arise from hypothalamic pomc-expressing progenitors. *J. Neurosci.* **35**, 5549–5556 (2015).
- Madisen, L. *et al.* A robust and high-throughput Cre reporting and characterization system for the whole mouse brain. *Nat. Neurosci.* **13**, 133–140 (2010).
- Shah, B. P. *et al.* MC4R-expressing glutamatergic neurons in the paraventricular hypothalamus regulate feeding and are synaptically connected to the parabrachial nucleus. *Proc. Natl Acad. Sci. USA* **111**, 13193–13198 (2014).
- Lesiak, A. *et al.* A genome-wide screen of CREB occupancy identifies the RhoA inhibitors Par6C and Rnd3 as regulators of BDNF-induced synaptogenesis. *PLoS ONE* **8**, e64658 (2013).
- Bousquet, C., Chesnokova, V., Kariagina, A., Ferrand, A. & Melmed, S. cAMP neuropeptide agonists induce pituitary suppressor of cytokine signalling-3: novel negative feedback mechanism for corticotroph cytokine action. *Mol. Endocrinol.* **15**, 1880–1890 (2001).
- Kageyama, K., Hanada, K., Iwasaki, Y. & Suda, T. Regulation and role of suppressor of cytokine signalling-3 in hypothalamic 4B cells. *J. Endocrinol.* **201**, 369–376 (2009).
- Mori, H. *et al.* Socs3 deficiency in the brain elevates leptin sensitivity and confers resistance to diet-induced obesity. *Nat. Med.* **10**, 739–743 (2004).
- Howard, J. K. *et al.* Enhanced leptin sensitivity and attenuation of diet-induced obesity in mice with haploinsufficiency of Socs3. *Nat. Med.* **10**, 734–738 (2004).
- Wondisford, A. R. *et al.* Control of Foxo1 gene expression by co-activator P300. *J. Biol. Chem.* **289**, 4326–4333 (2014).
- Dhillon, H. *et al.* Leptin directly activates SF1 neurons in the VMH, and this action by leptin is required for normal body-weight homeostasis. *Neuron* **49**, 191–203 (2006).
- Bingham, N. C., Anderson, K. K., Reuter, A. L., Stallings, N. R. & Parker, K. L. Selective loss of leptin receptors in the ventromedial hypothalamic nucleus results in increased adiposity and a metabolic syndrome. *Endocrinology* **149**, 2138–2148 (2008).
- Karsenty, G. & Ferron, M. The contribution of bone to whole-organism physiology. *Nature* **481**, 314–320 (2012).
- Mighiu, P. I. *et al.* Hypothalamic glucagon signalling inhibits hepatic glucose production. *Nat. Med.* **19**, 766–772 (2013).
- Fukuda, M., Williams, K. W., Gautron, L. & Elmquist, J. K. Induction of leptin resistance by activation of cAMP-Epac signalling. *Cell Metab.* **13**, 331–339 (2011).
- Zhao, A. Z., Huan, J. N., Gupta, S., Pal, R. & Sahu, A. A phosphatidylinositol 3-kinase phosphodiesterase 3B-cyclic AMP pathway in hypothalamic action of leptin on feeding. *Nat. Neurosci.* **5**, 727–728 (2002).
- Nolan, M. A., Sikorski, M. A. & McKnight, G. S. The role of uncoupling protein 1 in the metabolism and adiposity of RII beta-protein kinase A-deficient mice. *Mol. Endocrinol.* **18**, 2302–2311 (2004).
- Morton, G. J. *et al.* Arcuate nucleus-specific leptin receptor gene therapy attenuates the obesity phenotype of Koletsky (fa(k)/fa(k)) rats. *Endocrinology* **144**, 2016–2024 (2003).

Acknowledgements

We thank Paul Amieux for help with manuscript editing and Thomas Su for providing technical support. The recombinant AAV-CreGFP virus and AgRP-CreEGFP mice were kindly provided by Richard Palmiter (University of Washington). The Vgat-ires-Cre

transgenic mouse line was generously provided by Brad Lowell (the Harvard University). This work was supported by NIH R01 GM32875 to G.S.M.

Author contributions

L.Y. and G.S.M. designed the experiments and wrote the manuscript. L.Y. performed the experiments and analysed the data. G.S.M. supervised the study.

Additional information

Supplementary Information accompanies this paper at <http://www.nature.com/naturecommunications>

Competing financial interests: The authors declare no competing financial interests.

Reprints and permission information is available online at <http://npg.nature.com/reprintsandpermissions/>

How to cite this article: Yang, L. and McKnight, G. S. Hypothalamic PKA regulates leptin sensitivity and adiposity. *Nat. Commun.* 6:8237 doi: 10.1038/ncomms9237 (2015).



This work is licensed under a Creative Commons Attribution 4.0 International License. The images or other third party material in this article are included in the article's Creative Commons license, unless indicated otherwise in the credit line; if the material is not included under the Creative Commons license, users will need to obtain permission from the license holder to reproduce the material. To view a copy of this license, visit <http://creativecommons.org/licenses/by/4.0/>