



HHS Public Access

Author manuscript

Food Policy. Author manuscript; available in PMC 2016 October 01.

Published in final edited form as:

Food Policy. 2015 October 1; 56: 76–86. doi:10.1016/j.foodpol.2015.08.001.

Front of Pack Labels Enhance Attention to Nutrition Information in Novel & Commercial Brands

Mark W. Becker, PhD,
Michigan State University

Nora M. Bello, DVM, PhD,
Kansas State University

Raghav P. Sundar, PhD,
Michigan State University

Chad Peltier, and
Michigan State University

Laura Bix*

Abstract

Objectives—1) To assess whether Front-of-Pack (FOP) nutrition labels garner attention more readily than more complete, mandated nutrition information (the Nutrition Facts Panel (NFP), required in the US), and 2) To determine whether label design characteristics, specifically, color coding and/or coding with facial icons, increase attention to the FOP label.

Methods—In two experiments, we tracked the allocation of attention while participants (n=125) viewed novel and commercial packages with varied FOP designs using a change detection methodology.

Results—We found empirical evidence that FOP labels are attended more often, and earlier, than the currently mandated NFP, and that this benefit is due both to its placement on the front of the package and to the design characteristics of the FOP. Specifically, the use of color in FOPs increased attention to the label, but there was no evidence that coding information via facial icons impacted attention.

Conclusions—Our work supports a growing body of evidence supporting the use of FOP labels to attract attention to nutritional information. Findings may be relevant to inform policy decisions on labeling standards.

*Corresponding Author: Laura Bix, PhD, Michigan State University, 448 Wilson Road #153 Packaging, East Lansing, MI 48824, 517 355 4556 bixlaura@msu.edu.

AUTHORS' CONTRIBUTIONS

MWB, NMB, LB: designed research, analyzed data, wrote paper; RPS: designed research, performed research, analyzed data, wrote paper; CP: performed research, wrote paper

Publisher's Disclaimer: This is a PDF file of an unedited manuscript that has been accepted for publication. As a service to our customers we are providing this early version of the manuscript. The manuscript will undergo copyediting, typesetting, and review of the resulting proof before it is published in its final citable form. Please note that during the production process errors may be discovered which could affect the content, and all legal disclaimers that apply to the journal pertain.

Keywords

Obesity; Nutritional Labeling; Front of Pack Labels; Information Processing; Attentive behaviors; FOP; Nutrition labels

1. INTRODUCTION

Obesity is a serious and growing public health crisis throughout the World. In fact, the World Health Organization (WHO) estimates that worldwide obesity has more than doubled since 1980, and that in 2014 39% of all adults were overweight and 13% obese¹. Given the increased morbidity, mortality² and health care costs associated with obesity,³⁻⁵ strategies to curb the obesity epidemic are of global interest.

Current understanding indicates that obesity is a multifactorial condition resulting from a confluence of individual, social, and environmental factors⁶⁻⁹. However, the fact that obesity rates have increased for all age groups, regardless of genetic predisposition, highlights the pivotal role of the obesigenic environment¹⁰. Environmental factors include: expanding portions, the ubiquitous nature of foods high in sugar, fat, sodium and high-fructose corn syrup, as well as the emphatic promotion of these foods. As such, the attempts of policy makers to mitigate obesity, and its effects on society, should consider regulation of the environment. Potential legislative and regulatory actions for this purpose include: subsidizing healthy foods, restricting marketing and/or advertising, limiting the sales of nutrient empty foods in places like schools, taxing nutrient-empty foods¹¹, and changing labeling requirements (e.g. consideration of requirements for Front of Pack (FOP) labeling in New Zealand, Australia and the US, mandatory FOP labels for five snack categories in Thailand,¹² the required listing of trans-fat on packaged products¹³ and nutrition information on menus in chain restaurants by the US government¹⁴).

Front of pack (FOP) labels present truncated nutrition information on the front of the package, in varied forms. Due to a combination of their simplified format and their prominent position on the front of the package, it has been suggested that FOP labels are more noticeable than the traditional labeling (those on the backs of package (BOP) in many countries, or the Nutrition Facts Panel (NFP) on the side panel in the US¹⁵⁻¹⁸).

A variety of FOP labelling systems have emerged over the last decade with the intent of enhancing the efficacy of nutritional labelling¹⁹⁻²³. Forms range from those which detail specific nutrients, sometimes overlaying text with symbols or color, to simple visual “health logos” that sum product healthfulness in general or with regard to specific parameters (e.g. heart health)²⁴(see Figure 1).

Despite their prevalence, no single system for FOP labels has emerged and a lack of standardized requirements has enabled a proliferation of manufacturer-driven formats. This has negative consequences. First, the varied formats can be confusing,⁹ making it “difficult for consumers to evaluate and compare the nutritional profiles of foods.”²⁵ Second, the lack of a standardized approach to FOP nutrition labeling can be misleading to consumers due to the potential for selective reporting and manipulation of information²⁵. Consumers have

reported confusion with having to contend with multiple FOP label formats in various countries, including: Germany²⁶, Australia^{23, 27} and the US²⁵.

In response to the emergence of these varied systems and the resulting consequences, there has been a great deal of recent research investigating FOP labeling.^{36, 37} To provide a framework for understanding the strengths, weaknesses and gaps in this research, we used a commonly employed model of information processing²⁸. Using this approach, information must undergo five, serialized stages of processing in order to impact behavior (see Table 1).

If a label fails at any one of these processing stages, it not possible for the information it contains to successfully impact behavior. Simply providing information with a label is inadequate. Instead, an effective label must be designed so that it catalyzes exposure, garners attention and is easily encoded and comprehended (stages 1–4)^{28, 29}; only then can the label influence decision-making (i.e. compliance- stage 5). Consider, for example, a shopper with diabetes; information regarding several nutrients (fats and carbohydrates with emphasis on simple sugar) is critical for informed decisions. If this information is not provided on the product labeling (i.e. the consumer is not exposed to it), they are not able to make an informed choice. That said, simply providing the information on the labelling does not guarantee its use. It must also be assimilated through the senses; in this specific example, the consumer must direct their vision toward the information (Stage 2- perception). Resources within the brain must then be allocated to convert the external signal falling on the retina into an internal one that can be further processed (Stage 3- encodation). Participants that are preoccupied with other thoughts, multitasking, etc. may not have adequate cognitive resources available to encode said signal. Even if the signal is successfully encoded, if it is in a language that is unfamiliar to the shopper, at a reading level beyond their capability, or phrased in a way that is confusing or unfamiliar to them (e.g. listing as saccharides), meaningful processing can fail (Stage 4- Comprehension). Beyond that, the person must use the knowledge appropriately and engage their motor system to an informed conclusion (e.g. this product will likely result in a period of high blood sugar if I consume it. I will not purchase it) (Stage 5- Execution).

Utilizing this as a conceptual frame, a great deal of the research on FOPs has focused on the late stages of information processing, specifically, comprehension^{30, 31}. One common aspect of these studies is that participants are given the goal of evaluating the healthfulness of products. As such, these studies are good at evaluating how well a particular FOP works *when the person's goal is to evaluate healthiness*. This type of comprehension work is important; a label must be comprehensible to be effective. By and large, these studies suggest that color-coded multiple traffic light systems are easily understood^{26, 31–35}. However, since these studies give people a nutrition-relevant goal, they by-pass the early attentional stage of the processing model, which limits this research to people who already have the goal of assessing nutritional information.

By-passing the attentive stage ignores the fact that one of the reasons to adopt a front-of-pack label is to increase the conspicuity of the nutritional information, thereby making it more likely to receive attention. Early stages of processing (Stage 1-exposure and Stage 2-perception) are critical to the FOPs success; ample evidence finds that attention is critical to

the conscious recognition of stimuli³⁶⁻³⁸. As a result, if a label design does not garner attention, the processing of the nutritional information will be derailed early in the processing stream, never reaching the comprehension/usability stage.

A label that is effective at attracting attention, even among those without the specific goal of assessing the nutritional value of a product, will have the greatest potential to impact the widest segment of the population. Several researchers have acknowledged the importance of evaluating the effect that FOP labels have on attention, and have adopted methods from basic research on attention to the evaluation of nutritional labels. Some of these researchers have adopted visual search tasks or eye tracking methods³⁹⁻⁴¹.

During a typical visual search task, subjects are asked to find a specific target or piece of information; in studies on nutrition people are asked to find the nutrition information contained within that label. The label can be manipulated so that it is presented in varied formats from trial to trial in an attempt to assess how formatting helps or hinders the search for the target information. Dependent variables can be binary (e.g. the proportion of participants who correctly answered the question requiring the nutrition information prior to timing out), or continuous (e.g. the amount of time to correctly answer the question). While visual search is a powerful paradigm for investigating attention, it typically requires that participants be told the target of the search⁴²; (e.g. how many calories does this product contain?). Obviously, this prompts participants to seek nutrition information. These methods can effectively determine which design elements (e.g., large FOPs that appear in predictable locations within an uncluttered package) increase the ability of people to guide attention to nutrition information *when that is their goal*³⁹⁻⁴¹. However, they still do not allow evaluation of the visual saliency of varied label types for a person who does not have a nutrition-related goal. As the authors of one visual search study acknowledged, most “mainstream consumers” will not have a specific goal of attending nutritional information⁴⁰.

To avoid having to give people explicit instructions, catalyzing a search for nutritional information, a few researchers have used eye-tracking methods with more realistic shopping scenarios^{43, 44}. During eye tracking, the point of gaze of a person is superimposed over a scene, enabling researchers to measure many dependent variables, including: the gaze trail (what elements participants look at first, second etc.), the number of times participants fixate a particular aspect of a scene, the amount of time that a participant fixates a particular aspect of a scene, etc.

Koenigstorfer and colleagues used a mobile eye tracker to monitor gaze position while German participants performed a mock shopping task⁴³. They found that the presence of color-coded, FOP labels increased the number of gazes and the total gaze duration spent inspecting packages while making a selection; this was not true of monochromatic FOPs. This finding suggests that the presence of a color-coded FOP label draws attention. However, the mobile eye-tracker and experimental set-up that they employed did not provide adequate precision to determine when and for how long people were inspecting the actual FOP label versus other aspects of the packaging, just the overall time spent on the entire package.

Even so, eye tracking is a promising method for evaluating attention to nutritional labels in scenarios where attention to nutrition information is not an explicit goal of the experiment. Future work using the method is likely to prove informative; however, the method requires the use of expensive and specialized equipment and is a single measure.

Here, we adopt a change detection method from visual cognition³⁶ to provide a converging method that does not require sophisticated equipment. This method is similar to a visual search; however, rather than directing participants to a specific target (e.g. nutrition information as in Bialkova and Trijp⁴⁵), participants are told to search for a changing object within a scene. Change detection has been used extensively in the visual cognition literature, but is novel within the labelling literature. During a change detection task, subjects view an image on a computer screen for a brief period of time (240ms) this is followed by a brief, blank display (80ms) and then the same image viewed previously with a slight alteration (240ms) followed by another blank display (80ms). This test image, blank, altered image, blank sequence loops, providing a “flickering” appearance in the area of change (See Figure 2). In our experiment, the changing aspect of the scene may or may not be related to nutritional information. Successful detection prior to timing out at a predetermined time, and time to successfully detect a change (prior to time out) can be analyzed as dependent variables for analysis. Faster detection implies early attention to the changed property as well as insight about viewer’s attentional scan paths; as such, it is seen as measuring the locus of attention³⁶.

Thus, change detection allows us to objectively evaluate the ability of varied FOP label designs to attract the attention of participants who did not have the specific goal of attending to nutrition information.

2. GOALS AND OBJECTIVES

Our goals in doing so were: 1) to assess whether FOP nutrition labels garner attention more readily than the traditional NFP, and 2) to determine the effect of specific label design characteristics (color and facial icons) on attention.

To accomplish these goals, we compared the attentional prioritization of four FOP label designs consisting of combinations of color (yes/no) and facial icon (yes/no; See Figure 3). In addition to the FOP labels, each stimulus image also contained a Nutrition Facts Panel (NFP), the current required, standard for nutrition information in the US (see Figure 3). NFPs were designed according to the regulations authorized under the Nutrition Labeling and Education Act of 1990 (NLEA).

We chose to evaluate the impact of color coding of FOP labels because color is commonly used in the FOP systems throughout the world, but its use is the topic of significant debate^{46, 47}. We also chose to test schematic facial icons (i.e. sad for high, neutral for medium, happy for low; see Figure 3) because abundant data suggests that face stimuli are given extremely high attentional priority and that the processing of facial expressions of emotion requires very few cognitive resources. For example, research indicates that facial stimuli capture attention even when people are engaged in another task⁴⁸; that is, facial icons seem to be relatively immune to the phenomena of inattention blindness⁴⁹ and

attentional blink^{50, 51}. In addition, facial expressions of emotion are readily evaluated in the near absence of attention^{52–54}. Finally, the inclusion of pictorial icons in an FOP label may increase the ease with which the information is encoded and remembered⁵⁵. People extract basic meaning from pictures extremely rapidly⁵⁶ and form relatively long lasting memory of them⁵⁷, even when people are not actively attempting to form memories of the pictures⁵⁸. These findings suggest that a face might be a particularly effective stimulus for drawing attention to the FOP and conveying relative, qualitative information about the nutritional value of a product. Finally, it is worth noting that color coding and/or coding by facial icons may provide a benefit to children or people who have difficulty reading⁵⁹.

3. MATERIALS AND METHODS

Breakfast cereals were used as the stimuli images for these experiments because of their presence in the literature examining various effects related to graphics and consumer behavior, the existence of commercially available cereals at varied levels of nutrient and caloric density, and ease of prototyping these images.

Tested images included FOP labels (see Figure 3), which presented information regarding four nutrient components, namely: fat, saturated fat, sugars and salt. These components were selected because they represent nutrients commonly found on FOP labels throughout the world (e.g. the European Union, the United Kingdom), and are among those consistently implicated in diet-related illness. Also presented on the FOP labels was information on calorie values; consistent with common global practice and the Food Standards Association (FSA – United Kingdom) guidelines, the circle containing calorie values was not coded by color (or facial icon).

Design characteristics of FOP labels included combinations of color and schematic facial icons which coded the *qualitative* nutritional value of these nutrients. The treatment structure consisted of a 2×2×2 factorial design for FOP designs consisting of combinations of color (presence/absence) and schematic facial icons (presence/absence) presented with two nutrient levels, namely “high health” and “low health”. When present, colors used in the FOP designs included: green, amber and red; schematic facial icons were: happy, neutral, or frowning. The “healthy” form was at least one qualitative nutritional step lower than the “high health” case for three of the four nutrients listed on the FOP. For example, if the high had three greens and a yellow, then the low could have one red and three yellows. Cutoffs for “high, medium and low” levels were categorized into the red/amber/green (and/or appropriate facial icon) based on the high/medium/low Traffic Light Label guidelines released by the Food Standards Agency based on a 30 gram serving.⁶⁰

We conducted two experiments, both of which utilized the “flicker” change detection task developed by Rensink⁶¹. During each trial, an original image (240 ms) and an altered image (240 ms) were continuously alternated with an interleaving gray screen (80 ms) separating them (see Figure 2). The “flicker” of these two images looped until participants pressed the space bar to indicate that they had spotted the change, thereby halting the timer and the flicker task. Participants then used a mouse to click on the location of the change, to verify that they, indeed, had detected the change. Trials were deemed “failed” if participants did

not correctly identify the location of the change after stopping the trial, or if they “timed out” by not successfully identifying the change within 10 seconds.

The objective of experiment 1 was to assess the ability of different designs of FOP labels to garner attention relative to the more complete information provided by the required label, the NFP (see Figure 3). For this experiment, we designed and created three novel brands of breakfast cereal (Figure 4A) that were devoid of any health claims, spokes-characters and special offers on the PDP. Further, we designed the change detection task such that the flickering involved the disappearance and reappearance of the FOP label or a portion of the traditional NFP that was size-matched to that of the flickering FOP label.

In Experiment 2, we used commercial brands of breakfast cereal (see Figure 4B) to accomplish two objectives. First, we wanted to evaluate the extent to which increased attention to the FOP label relative to the NFP (as indicated by results from Experiment 1) was based solely on location or whether it could be attributed to the design characteristics (e.g. color) of the FOP label itself. To achieve this objective, the changes that occurred in the traditional NFP location involved the disappearance of FOP designs *within the NFP location*. Thus, the only difference between FOP and NFP changes was the location during experiment 2. Our second objective for this experiment was to determine whether the effects of specific FOP design characteristics (i.e., color and facial icons), as identified in Experiment 1, would generalize to more complex, real world packages (see Figure 4B).

For each of experiments 1 and 2, each subject performed 168 change detection trials presented in random order. Forty-eight trials were “critical” trials, 24 of which involved the flickering of the FOP label (3 brands x 4 FOP designs x 2 levels of health for each experiment), and 24 consisted of changes within the NFP (sector 7- see Figure 5). In order to prevent subjects from preferentially attending to nutritional information, the remaining 120 “noncritical” trials consisted of flickering changes in sectors 1, 2, 3, 4 and 5 of the package (see Figure 5), corresponding to brand name, package graphics, net weight and others.

3.1 Subjects & Equipment

Participants were recruited through the Department of Psychology’s participant pool. Participants needed to be at least 18 years of age with no known history of seizures and not be legally blind in order to participate in either experiment.

Forty-seven subjects participated in Experiment 1, and 81 subjects participated in experiment 2. Usable data was obtained from 45 subjects for Experiment 1, and 80 subjects for Experiment 2. Data from subjects who failed to correctly identify the change location on more than 50% of the trials (n= 2 Experiment 1 and n=1 Experiment 2) were excluded from analyses. All protocols were approved by the Institutional Review Board at the Michigan State University.

EPrime® software was used to run change detection trials in isolated booths on computers with a screen resolution of 1024 × 768 pixels. For each trial, subjects indicated that a change has been detected by pressing any key on the computer keyboard. Identification of the proper change location was confirmed by having the subject use the mouse to verify the

change location, ensuring that the subject had, indeed, identified the change. For trials where subjects recorded the change in an incorrect location, or when subjects did not indicate that they had seen the change within 10 seconds, the trial was recorded as “failed to detect change.”

3.2 Statistical Methods

Experiment 1 involved a 2-way factorial treatment structure consisting of 4 FOP designs (color no facial icon, color with facial icon, non-color with facial icon, non-color without facial icon) and two levels of health status (high and low). Experiment two, by contrast, involved a 3-way factorial treatment structure consisting of the aforementioned factors, but also considered location of the change. The statistical models used for data analyses in experiments 1 and 2 included fixed effects that reflected the corresponding factors described above and their interactions. Next, we describe further details of the statistical approach taken on each of the response variables.

Successful Detection (Binary Variable, Yes/No)—Successful change detection of critical trials was analyzed separately for each experiment using a generalized linear mixed model that assumed a Bernoulli distribution and a logit link function. We note the correlation structure in the data due to multiple observations on each subject and on each brand. To account for this, we fitted corresponding random effects in the linear predictor of the generalized linear mixed model. Additional random effects were also included to ensure that the experimental unit for each factor was properly recognized. No evidence for overdispersion was apparent using a maximum-likelihood-based Pearson Chi-Square statistic. The final statistical model used for inference was fitted using residual pseudo-likelihood to ensure efficient estimation of variance components.

Time to Detect Change (Continuous Variable, milliseconds)—A generalized linear mixed model was fitted to the response time, measured in milliseconds, and expressed in the log scale (experiment 1) or in the log-log scale (experiment 2). Data transformations were selected to ensure that the residual variance was stabilized and that model assumptions were reasonably met. Only critical trials, i.e. those that involved changes to the FOP label and NFP (sectors 6 and 7, Figure 4) were considered for analyses. For each model, the linear predictor included the same fixed and random effects described above for successful change detection. Variance components were estimated using residual maximum likelihood. Model assumptions were checked using studentized residuals.

All statistical models were fitted using the GLIMMIX procedure of SAS (version 9.2, SAS Institute, Cary, NC) implemented using Newton-Raphson with ridging as the optimization technique. In all cases, Kenward Roger’s procedure was used to estimate degrees of freedom and make corresponding adjustments in the estimation of standard errors. In each case, we report least square mean estimates of combinations of treatment factors of interest and corresponding 95% confidence intervals. Relevant post-hoc pairwise comparisons were conducted using either Tukey-Kramer or Bonferroni adjustments, as appropriate in each case, to avoid inflation of Type I error rates due to multiple comparisons.

4. RESULTS

4.1 Experiment 1

Change Detection in FOP labels vs NFP: Changes to the FOP labels were more likely to be detected than changes to the traditional NFP ($p < 0.001$; Figure 6a). In fact, almost all changes on the front of package (FOP) were successfully detected (LSME = 98.3% \pm SE=0.8%), while a majority of changes in the NFP were missed (only LSME = 31.4% \pm SE 0.089 detected), mostly due to trials that “timed out”.

For all trials in which changes were successfully detected, changes were detected more rapidly (Figure 6b) when they occurred to the FOP label than to the NFP ($p < 0.001$), with an estimated time to detection of 2.7 seconds (95% confidence interval = 2.5–2.9) as compared with 4.5 seconds (95% confidence interval = 4.1–5.0), respectively. In short, FOP changes were more likely to be found and were located more rapidly than changes to the NFP.

4.1.1 Effect of Design Characteristics on Change Detection within the FOP label—Of primary interest was whether designing FOP labels that included color and/or facial icons would increase attention to nutrition information. Additionally, we specifically investigated whether the effect of these design factors would differ between high and low health cereal products. Label design features (e.g., color, facial icons) that increased the attentional prioritization of the FOP label should result in faster change detections.

A main effect ($p < 0.0001$) of color was evident on time to detect change, changes were detected faster for colored FOP label designs, as compared with non-colored, regardless of the status of facial icon (Figure 7). There was no evidence for any main effect of facial icons ($p = 0.375$) nor of an interaction with color ($p = 0.617$) on time to change detection. Further, there was no evidence for an effect of health status of the package, nor any interactions with FOP designs, on time to detect change in the FOP label ($p > 0.18$).

4.2 Experiment 2

While Experiment 1 showed a clear attentional advantage for FOP labels relative to the standard NFP (see Figure 6a and 6b), it was unclear whether the FOP's advantage was due primarily to the location of the labels, to differences in the visual aspects of the changing stimuli (design elements in the FOP while the NFP was merely text) or a combination thereof. In Experiment 1, the FOP changes involved the flicker of the FOP label, while the NFP changes involved the flicker of the NFP text. As such, both the visual features of the change and its location differed between FOP and NFP changes. Experiment 2 was designed to discriminate between these mechanisms. For this purpose, we equated the visual characteristics of the changes in the FOP label and in the NFP, such that the NFP change trials involved the same visual stimulus flickering *within the location of the NFP*. That is, the NFP changes in Experiment 2 involved the flicker of one of the FOP labels within the NFP panel. Thus, in Experiment 2, the only difference between FOP and NFP changes was the location of the change, allowing us to evaluate the effect of location independently from the effect of the visual characteristics of the change.

In Experiment 2 we also switched the packages from novel packages to commercial packages (Figure 4b). Three brands of breakfast cereal were selected from brands being sold in the mid-Michigan area at the time of the study. These were: Post® Cocoa Pebbles™, Post® Grape Nuts™ and Kashi® Cinnamon Harvest™ (see Figure 4B). The flattened PDP and NFP panels were scanned into the computer, and FOP labels containing combinations of color and facial icons were digitally added to the stimulus. These stimuli allowed us to evaluate whether the FOP design characteristics that were most effective at drawing attention in Experiment 1 (e.g., color; see Figure 7) generalized to more realistic packages in which branding information would compete for attention with the FOP label.

In all other respects, the experimental design, procedure, and statistical analyses were identical to Experiment 1. Eighty one participants who had not participated in Experiment 1 participated in Experiment 2. One subject successfully detected changes in less than 50% of the trials; this subject's data was eliminated from further analysis leaving usable data from 80 participants.

4.2.1 Change Detection in FOP labels vs NFP—Similar to Experiment 1, in Experiment 2 we found that changes were more likely to be detected in the FOP than in the NFP condition ($p < .001$; Figure 8A); estimates of 98.9% (CI 97.9–99.4) vs 96.6% (CI 94.5–97.9%) respectively. Also, the time required to successfully detect changes in those trials where a change was detected was shorter when the change was located in the FOP label (1978.7 ms (CI 1632.8–2409.9 ms)) as compared to the NFP (2699.2 ms (CI 2210.9–3312.4ms)) ($p < 0.001$; Figure 8B).

4.2.2 Effect of Design Characteristics on Change Detection with in the FOP label—The results of Experiment 2 concerning the effect of design characteristics within the FOP label further replicated those of Experiment 1. We found evidence for a main effect of color ($p < 0.0001$), whereby changes were detected faster in colored than non-colored FOP labels. In turn, we found no evidence for any effect of facial icons ($p > 0.61$) nor a facial icon by color interaction ($p > 0.05$) on time to detect change in the FOP label. Similarly, there was no evidence of differences in time to detect change as a function of health status of the product, neither any of its interactions with design characteristics ($p > 0.15$ in all cases) (Figure 9).

5. DISCUSSION

Our results suggest that FOP labels are effective at capturing attention for both novel brands (Experiment 1; Figure 4A) and existing commercial brands (Experiment 2; Figure 4B) and that color coding the relative nutritional value of nutrients in the FOP significantly increases attention to FOP labels relative to a monochromatic FOP. Importantly, this attentional benefit occurred even though participants did not have a nutritional goal. Given that attention to a label is a prerequisite for comprehension and compliance, the finding that FOP labels garner attention among those without a nutritional goal suggests that presenting information in this format would be likely to penetrate a larger segment of consumers⁴⁵.

In Experiment 1, changes that involved the appearance and disappearance of FOP labels were found significantly more frequently and rapidly than changes that involved the appearance and disappearance of a size-matched portion of the traditional NFP (Figure 6). These differences were dramatic. The probability of detecting the change within the allotted 10 second trial duration was 31.4% (LSME \pm SE 0.089) for the standard labeling (the NFP) and 98.3% (LSME \pm SE=0.008) for FOP changes. Considering only those trials in which the change was successfully detected, changes to the traditional NFP took approximately twice as long to detect as changes in the FOP label (approximately 4.5 vs. 2.7 seconds, respectively), regardless of design characteristics of the latter.

While we report a rather large attentional benefit for FOPs, there are reasons to believe that our method most likely underestimated the true magnitude of the FOP advantage. We used *flattened images* of the packages such that the side panel with the traditional NFP was visible on the same plane as the FOP label. This label location, while logistically inevitable in our experimental setting, provided the NFP with a potential advantage for attention garnering. In real world scenarios, the FOP label and the NFP would not be visible simultaneously; rather, the former would reside on the front panel and the latter on the side panel of the package. Even when on the same plane, our results indicate that participants attended to FOP labels more often, and faster, than the NFP; therefore, it is likely that the attention garnering difference between FOP labels and NFP would be exacerbated if rotation of a package were necessary to access the NFP information, as is the case in real world scenarios.

In addition, our estimates of detection time were based only on trials in which the change was correctly identified within the allotted 10 second trial period. Many of the NFP changes were not detected within 10 seconds (see Figure 6), and, thus, those trials did not contribute to the estimated time required to detect an NFP change. Including those trials in the estimate (provided that time to actual change detection had been observed) would greatly increase the estimated time required to detect a NFP change, making the difference between the FOP and NFP changes even more pronounced. Thus, the true difference in time required to detect changes between the FOP and NFP labels is probably even greater than the values we report here.

Finally, it is worth noting that Experiment 1 involved a comparison between the *current US standard* for presenting nutritional information, the NFP, and a proposed alternative method for presenting information, the FOP label. Our findings of large attentional advantages for the FOP labels in this experiment provide empirical evidence that FOP labels are more attention grabbing than the current NFP, and, therefore, offer a promising strategy to guide evidence-based policy.

While Experiment 1 showed a clear attentional advantage for FOP labels relative to the standard NFP, the two conditions differed both in location AND in type of visual stimuli that changed. As such, it was unclear whether the FOP's advantage was due, at least in part, to its location on the front panel of the package, to the design characteristics of the visual stimuli, or a combination of both. To isolate the mechanism, in Experiment 2, all critical changes involved the appearance and disappearance of an FOP label in either the FOP

location (package front) or the NFP location (on the side panel). The only difference between conditions was the location where the change occurred; NFP changes involved an FOP appearing and disappearing within the NFP label location, and FOP changes involved an FOP appearing and disappearing in its typical front of pack location. Results from Experiment 2 indicated that location on the front of the package was a factor that significantly enhanced attention to nutritional information. The finding that the FOP location increased attention to nutrition information, even when the traditional NFP appeared in the same plane, provides evidence that people prioritize information on the front of packages, and lends additional support for the belief that simplified nutrition labels that appear on the front of the package may be more effective than current labeling standards^{62–65}.

It is worth noting, however, that the magnitude of this advantage was considerably smaller in Experiment 2 relative to Experiment 1 (Figure 7A and B as compared with Figure 5A and B). This suggests that at least part of the FOP benefit can be attributed to the visual characteristics of the FOP labels relative to that of the NFP. Policymakers from around the globe have increasingly focused on provision of nutrition information via optimized labels; this has led to arguments about what constitutes best practice¹², and calls for objective data upon which policy can draw^{12, 66}. The finding that the visual characteristics of a label impact attention to the information suggest that the considerations of the precise visual characteristics of the label are likely to impact the effectiveness of the label. As such, objective data of how these visual characteristics impact the efficacy of nutrition labels is key to developing best practices.

Within the debate about best practices, one of the most contentious issues has been whether the labels should be color-coded or not. Color-coded labels have been opposed by industry groups who indicate that simplified, qualitative cut-offs (e.g. color-coding) have the potential to elevate or demonize foods inappropriately. For instance, a diet beverage might be elevated while milk demonized. Trade organizations have also argued that what may be quite appropriate for one person's diet may be inappropriate for another, and that "standard" cutoffs are an over simplification. In late 2014, in response to complaints from industry groups and food companies that its traffic light labels would have a negative effect on product marketing, the European commission initiated legal proceedings against the Food Standards Association (FSA) in the UK. This was followed by the commission rejecting the EU-wide adoption of traffic-light labels^{64, 67}. In the US, independent of any FDA action, the Grocery Manufacturer's Association moved forward with its own, non-color coded FOP label,⁶³ citing concerns with the basis for color-coding in general. In Australia in mid-2014, despite strong positions favoring color-coding from several consumer groups and influential organizations^{68, 69}, the government health organization endorsed a color-free GDA style label⁷⁰.

These attempts to limit color-- coded FOPs have occurred despite a growing body of research which suggests that color-coding may increase label effectiveness (see review below). Our study adds to the body of research that favors color-coding; specifically providing evidence regarding attentional benefits. In Experiment 1, changes to color-coded FOP labels were found more consistently and more rapidly than changes to non-colored FOP labels (Figures 6). Experiment 2 found the same pattern of results (Figure 8), thereby

extending the results to commercially available products. Thus, Experiment 2 demonstrated that the attentional benefit of FOP labels is maintained even when they compete for the consumer's attention with commercial branding information.

The fact that we find that color coded FOP labels are more effective than monochromatic FOP labels at drawing attention among those without an explicit nutrition relevant task dovetails nicely with work investigating the effectiveness of FOP labels in tasks with an explicit nutrition goal. Studies regarding the ability of colored FOPs (i.e. traffic lights) to catalyze nutritive comparisons have repeatedly suggested that they are effective. Researchers from the UK⁷¹, concluded that color-coded FOPs (traffic lighting) significantly enhanced participants' abilities to arrive at a judgement regarding product "healthfulness." This finding was echoed by a study conducted in Germany in which a color-coded FOP enhanced the chances of making a correct evaluation of the healthier choice of product during a binary force choice task compared to other types of nutrition labels.²⁶ Likewise, Australian researchers concluded that people were five times more likely to correctly identify a food as healthy when labeled with a traffic light FOP than a monochromatic FOP scheme.³²

It is encouraging that the colored FOP format that has been shown to be particularly effective in the later stages of information processing (i.e. comparative tasks in the same format) also seem to be most effective at drawing attention to itself, an early stage of information processing. In short, the label that we find to garner the most attention, a color-coded FOP, is also the label that researchers who have focused on the late stages of cognitive processing (comprehension) have also found to be easiest to comprehend and use^{26, 31-35}. The combination of our results with those on comprehension suggests that color coded FOPs are more effectively processed at multiple stages of information processing (see Table 1), and thus is likely to be a more effective method of nutrition labeling.

It is worth noting, however, that the ultimate goal is to change people's choice in purchase scenario (Table 1; Step 4, compliance). Lab-based research on the ability of FOPs to alter the decision stage have yielded conflicting results, with some providing no evidence that FOPs influence choice^{26, 72, 73} and others reporting that they can^{43, 74, 75}. Applied research conducted in the US has suggested that the use of a simple, self-developed, color-coded labeling system which distilled several nutrition factors into a single red, yellow or green label⁷⁶ did not merely assist in understanding of comparative healthfulness, but that it also positively impacted selection behavior. Levey et al.⁷⁷ concluded that the presence of color-coded label for food and beverages positively impacted the sale of healthier products in a hospital cafeteria regardless of racial and socioeconomic backgrounds; a follow up study concluded that the encouraging selection pattern was sustained for a period of two years⁷⁸. In contrast to the US work, researchers from the UK¹⁹ reported that a study which compared sales before and after the implementation of the UK's traffic light system did not significantly influence the healthfulness of consumer choices when data from ready meals and sandwiches were compared. This was echoed in results collected in Hamburg, Germany; though a significant (positive) difference was found in the ability to identify healthier foods, there was no evidence for a difference in envisioned consumption when treatment conditions were compared²⁶.

These mixed results likely contribute to the continuing policy debates regarding the value of requiring color-coded nutrition labels, and several factors possibly play a role in their disparity. The studies were conducted on different continents (North America and Europe), in different settings (hospital cafeteria vs grocery market vs laboratory) and took varied approaches to consumer education (hospital employees received specific information on label meaning and dieticians were available to answer questions for a period of time). Though all of the studies utilized FOP labels that employed color, the specific experimental designs differed. Several studies suggest that nutritional labeling is effective *when used*.^{79–81} However, the only way that information can be used effectively in product selection is if all steps of the information processing model are accomplished (steps 1–4 See Table 1). Design differences potentially impacted early stage information processing (i.e. people failed to be exposed, perceive or encode the information, barring comprehension and, ultimately selection, from occurring). As such, the effect of varied design factors (e.g. size, location, color, formatting) on early stage processing (attention) is in need further investigation so that solutions can be optimized and standardized through informed policy decisions.

6. LIMITATIONS

Although attention is a necessary prerequisite step to comprehension and consumption, it is not sufficient to ensure an effective nutritional label, future research is needed to determine whether (or not) the addition of these labels would aid other aspects of processing (i.e. comprehension and, ultimately, behavior). Indeed, that the ultimate goal is to change people's choice in purchase scenario, however data on whether colored FOP labels impact choice are conflicting.

In short, although we have strong evidence that color has significant influence on attention, and there is clear evidence that color-coding helps people make cross product comparisons when asked to do so^{19, 26, 32}, it is less clear that providing this information would change the purchasing behavior of consumers^{19, 26, 78}. To achieve the desired goal of changing people's purchases may require a combination of an optimized method of providing nutrition information, which our research suggests would be a color coded FOP, and public education about the need to use that information to make more healthful food choices.

7. CONCLUSIONS

By applying a change detection method commonly used in visual cognition research, we were able to empirically evaluate attention to FOP labels and the traditional NFP label. Our results provide clear evidence that FOP labels are more effective at attracting attention than the traditional NFP labels, and that this advantage is attributable to both the location of the FOP on the front panel and to its design elements. In addition, our comparisons between different FOP designs demonstrate that color-coding FOP labels is an effective method for increasing attention to the FOP. These results hold whether one considers novel brands with sparse graphics (Figure 3A) or more realistic, commercially-available products (Figure 3B). Finally, we found no evidence that these findings depended on the health level of the product, and we found no evidence that coding the FOPs with facial expressions of emotion influenced attention to the labels. This latter finding is somewhat surprising given a

considerable body of basic research which suggests that people show an attentional bias for face stimuli ⁴⁸.

This work directly answers objective 4.3 of the FDA's 2012–2016 Strategy, to “improve consumer access to and use of nutrition information” by investigating front-of-pack labeling using evidence-based approaches ⁸². Further, it demonstrates that the application of an information processing approach can be combined with experimental methods from visual cognition to provide empirical evidence about effective labeling practices, thereby providing evidence which can be leveraged in informed policy making.

Acknowledgments

The project described was supported by Award Number R21CA155818 from the National Cancer Institute. The content is solely the responsibility of the authors and does not necessarily represent the official views of the National Cancer Institute or the National Institutes of Health. Further, Laura Bix, one of the coauthors has salary support through the Hatch Act (USDA) as a Michigan Ag Bio Station researcher.

References

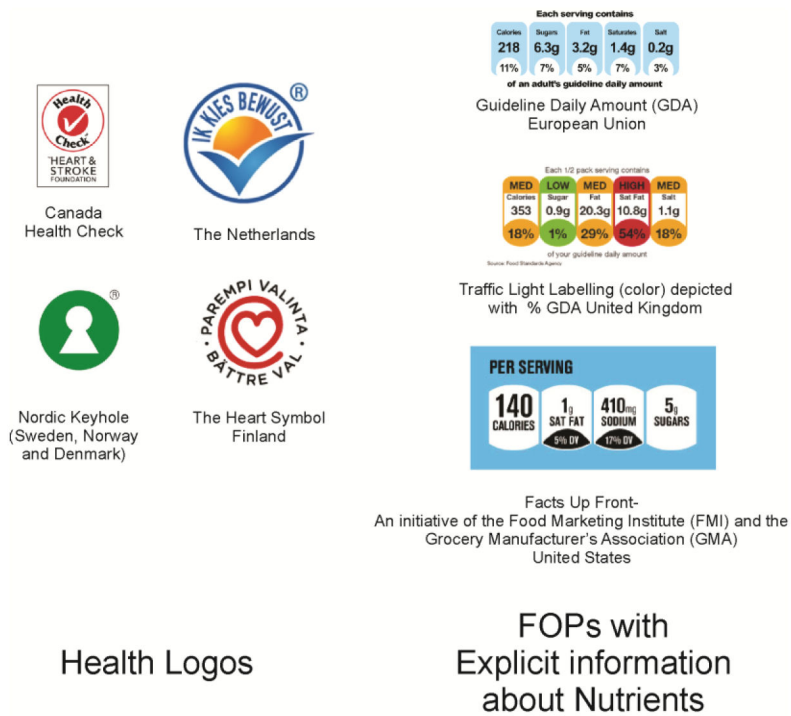
1. World Health Organization (WHO). Obesity and Overweight Fact Sheet N311. 2015. [cited 2015 May 5]; Available from: <http://www.who.int/mediacentre/factsheets/fs311/en/>
2. Pi-Sunyer FX. Medical Hazards of Obesity. *Annals of Internal Medicine*. 1993; 119:655–60. [PubMed: 8363192]
3. Colditz GA. Economic costs of obesity and inactivity. *Medicine & Science in Sports & Exercise*. 1999; 31:S663. [PubMed: 10593542]
4. Finkelstein, AE.; Fiebelkorn, CI.; Guijing, Wang. National medical expenditures attributable to overweight and obesity: How much, and who's paying?. Bethesda, MD, ETATS-UNIS: Project Hope; 2003.
5. Wolf, MA.; Colditz, AG. Current Estimates Of The Economic Cost Of Obesity In The United States. Silver Spring, MD, ETATS-UNIS: North American Association for the Study of Obesity; 1998.
6. Ogden CL, Carroll MD, Curtin LR, McDowell MA, Tabak CJ, Flegal KM. Prevalence of Overweight and Obesity in the United States, 1999–2004. *JAMA*. 2006; 295:1549–55. [PubMed: 16595758]
7. Centers for Disease Control and Prevention. Prevalence of overweight and obesity among adults: United States, 2003–2004. 2007. [cited 2007 October 5]; Available from: http://www.cdc.gov/nchs/products/pubs/pubd/hestats/overweight/overwght_adult_03.html
8. The Obesity Society (TOS). Childhood overweight. 2008. [cited 2008 July 6]; Available from: http://www.obesity.org/information/childhood_overweight.asp
9. Draper A, Adamson A, Clegg S, Malam S, Rigg M, Duncan S. Front-of-pack nutrition labelling: Are multiple formats a problem for consumers? *European Journal of Public Health*. 2013; 23:517–21. [PubMed: 22140250]
10. Keith S, Redden D, Katzmarkzyk P, Boggiano M, Hanlon EB, RM, Ruden D, et al. Putative contributors to the secular increase in obesity: Exploring the roads less traveled. *International Journal of Obesity (London)*. 2006; 30:1585–94.
11. Brownell, K.; Horgen, K. Food fight: The inside story of the food industry, America's obesity crisis, and what we can do about it. New York, NY: McGraw-Hill; 2007.
12. European Food Information Council. Global update on nutrition labelling: Executive Summary. Brussels, Belgium: European Food Information Council; 2013. [cited 2014 August 15]; February 2013:[Available from: http://www.eufic.org/upl/1/default/doc/GlobalUpdateExecSumFeb2013_FINAL.pdf
13. Trans fatty acids in nutrition labeling, Nutrient content claims and health claims, (January 1, 2006, 2003).

14. Food Labeling: Nutrition labeling of standard menu items in restaurants and similar retail food establishments, vol 79, #230. Sect. 11 and 101 (2014).
15. Alexander, D.; Hazel, J. New Zealand Food Authority. 2008. Front-of-pack nutritional labeling: Perspectives of the New Zealand Food Industry.
16. Feunekes G. Front-of-pack nutrition labelling: Testing effectiveness of different labelling formats front-of-pack in four European countries. *Appetite*. 2008; 40:57–70. [PubMed: 17629351]
17. Mackintosh, A. Heart Foundation of Australia. The Tick Update. Sydney, Australia: 2008. Front of Pack Labeling.
18. Wansink B. How do front and back package labels influence beliefs about health claims? *The Journal of Consumer Affairs*. 2003; 37:305–31.
19. Sacks G, Rayner M, Swinburn B. Impact of front of pack traffic light nutrition labeling on consumer food purchases in the UK. *Health Promotion International*. 2009; 24:344–53. [PubMed: 19815614]
20. Vyth E, Steenhuis I, Vlot J, Wulp A, Hogenes M, Looije D, et al. Actual use of a front of pack nutrition logo in the supermarket: Consumers' motives in food choice. *Public Health Nutrition*. 2010; 13:1882–9. [PubMed: 20359378]
21. Vyth E, Roodenburg A, Brug J, Seidell J. Front-of-pack nutrition label stimulates healthier product development: A quantitative analysis. *International Journal of Behavioral Nutrition and Physical Activity*. 2010;7.
22. Vyth E, Steenhuis I, Mallant S, Mol Z, Brug J, Temminghoff M, et al. A front-of-pack nutrition logo: A quantitative and qualitative process evaluation in the Netherlands. *Journal of Health Communication*. 2009; 14:631–45. [PubMed: 19851915]
23. Kelly B, Hughes C, Chapman K, Louie J, Dixon H, Crawford J, et al. Consumer testing of the acceptability and effectiveness of front-of-pack food labelling systems for the Australian grocery market. *Health Promotion International*. 2009; 24:120–9. [PubMed: 19336501]
24. Hodgkins C, Barnett J, Wasowicz-Kirylo G, Stysko-Kunkowska M, Gulcan Y, Kustepeli Y, et al. Understanding how consumers categorise nutritional labels: A consumer derived typology for front-of-pack nutrition labels. *Appetite*. 2012; 59:806–17. [PubMed: 22918174]
25. Hawley K, Roberto C, Bragg M, Liu P, Schwartz M, Brownell K. The science on front-of-package food labels. *Public Health Nutrition*. 2012; 22:1–10.
26. Borgmeier I, Westenhoefer J. Impact of different food label formats on healthiness evaluation and food choice of consumers: a randomized-controlled study. *Bmc Public Health*. 2009;9. [PubMed: 19134207]
27. Louie J, Flood V, Rangan A, Hector D, Gill T. A comparison of two nutrition signposting systems for use in Australia. *New South Wales Public Health Journal*. 2008; 19:121–6.
28. DeJoy, D., editor. Human Factors Society 22nd Annual Meeting. Santa Monica, CA: Human Factors Society; 1991. A Revised Model of the Warnings Process Derived from Value-Expectancy Theory.
29. de la Fuente J, Bix L. A tool for designing and evaluating packaging for healthcare products. *Journal of Patient Compliance*. 2011; 1:48–52.
30. Campos S, Doxey J, Hammond D. Nutrition labels on pre-packaged foods: a systematic review. *Public Health Nutrition*. 2011; 14:1496–506. [PubMed: 21241532]
31. Hawley KL, Roberto CA, Bragg MA, Liu PJ, Schwartz MB, Brownell KD. The science on front-of-package food labels. *Public Health Nutrition*. 2013; 16:430–9. [PubMed: 22440538]
32. Kelly B, Hughes C, Chapman K, Louie JC-Y, Dixon H, Crawford J, et al. Consumer testing of the acceptability and effectiveness of front-of-pack food labelling systems for the Australian grocery market. *Health Promotion International*. 2009; 24:120–9. [PubMed: 19336501]
33. Roberto CA, Bragg MA, Schwartz MB, Seamans MJ, Musicus A, Novak N, et al. Facts Up Front Versus Traffic Light Food Labels A Randomized Controlled Trial. *American Journal of Preventive Medicine*. 2012; 43:134–41. [PubMed: 22813677]
34. Roberto CA, Bragg MA, Seamans MJ, Mechulan RL, Novack N, Brownell KD. Evaluation of consumer understanding of different front-of-package nutrition labels, 2010–2011. *Prev Chronic Dis*. 2012;9.

35. Hersey JC, Wohlgenant KC, Arsenault JE, Kosa KM, Muth MK. Effects of front-of-package and shelf nutrition labeling systems on consumers. *Nutrition Reviews*. 2013; 71:1–14. [PubMed: 23282247]
36. Rensink RA, O'Reagan JK, Clark JJ. To See or Not to See: The Need for Attention to Perceive Changes in Scenes. *Psychological Science*. 1997; 8:368–73.
37. Simons DJ. In Sight, Out of Mind: When object representations fail. *Psychological Science*. 1996; 7:301–5.
38. Becker MW, Pashler H. Awareness of the continuously visible: Information acquisition during preview. *Perception & Psychophysics*. 2005; 67:1391–403. [PubMed: 16555591]
39. Bialkova S, Grunert KG, van Trijp H. Standing out in the crowd: The effect of information clutter on consumer attention for front-of-pack nutrition labels. *Food Policy*. 2013; 41:65–74.
40. Bialkova S, van Trijp H. What determines consumer attention to nutrition labels? *Food Quality and Preference*. 2010; 21:1042–51.
41. Bialkova S, van Trijp H. An efficient methodology for assessing attention to and effect of nutrition information displayed front-of-pack. *Food Quality and Preference*. 2011; 22:592–601.
42. Wolfe JM. Visual search. *Attention*. 1998; 1:13–73.
43. Koenigstorfer J, W sowicz-Kiryło G, Sty ko-Kunkowska M, Groeppel-Klein A. Behavioural effects of directive cues on front-of-package nutrition information: the combination matters! *Public Health Nutrition*. 2013:1–7.
44. Turner MM, Skubisz C, Patel Pandya S, Silverman M, Austin LL. Predicting Visual Attention to Nutrition Information on Food Products: The Influence of Motivation and Ability. *Journal of Health Communication*. 2014:1–13.
45. Bialkova S, van Trijp H. What determines consumer attention to nutrition labels? *Food Quality and Preference*. 2010; 21:1042–51.
46. ElAmin, A. UK regulator approves colour-coded nutritional labelling. 2006. [cited 2013 June 7]; Available from: <http://www.foodproductiondaily.com/Packaging/UK-regulator-approves-colour-coded-nutritional-labelling>
47. Cooper, B. Nutritional labelling- the debate: A matter of interpretation. 2012. [updated March 1, 2012; cited 2013 June 17]; Available from: http://www.just-food.com/management-briefing/a-matter-of-interpretation_id118457.aspx
48. Langton SRH, Law AS, Burton AM, Schweinberger SR. Attention capture by faces. *Cognition*. 2008; 107:330–42. [PubMed: 17767926]
49. Mack A, Pappas Z, Silverman M, Gay R. What we see: Inattention and the capture of attention by meaning. *Consciousness and Cognition: An International Journal*. 2002; 11:488–506.
50. Awh E, Serences J, Laurey P, Dhaliwal H, van der Jagt T, Dassonville P. Evidence against a central bottleneck during the attentional blink: Multiple channels for configural and featural processing. *Cognitive Psychology*. 2004; 48:95–126. [PubMed: 14654037]
51. Landau AN, Bentin S. Attentional and perceptual factors affecting the attentional blink for faces and objects. *Journal of Experimental Psychology: Human Perception and Performance*. 2008; 34:818–30. [PubMed: 18665728]
52. !!! INVALID CITATION !!!
53. de Gelder B, Vroomen J, Pourtois G, Weiskrantz L. Non-conscious recognition of affect in the absence of striate cortex. *NeuroReport: For Rapid Communication of Neuroscience Research*. 1999; 10:3759–63.
54. Whalen PJ, Rauch SL, Etcoff NL, McInerney SC, Lee MB, Jenike MA. Masked presentations of emotional facial expressions modulate amygdala activity without explicit knowledge. *The Journal of Neuroscience*. 1998; 18:411–8. [PubMed: 9412517]
55. Paivio A. Mental comparisons involving abstract attributes. *Memory & Cognition*. 1978; 6:199–208.
56. Greene MR, Oliva A. The briefest of glances: The time course of natural scene understanding. *Psychological Science*. 2009; 20:464–72. [PubMed: 19399976]
57. Shepard RN. Recognition Memory for Words, Sentences, and Pictures. *Journal of Verbal Learning & Verbal Behavior*. 1967; 6:156–63.

58. Becker MW, Rasmussen IP. Guidance of attention to objects and locations by long-term memory of natural scenes. *Journal of Experimental Psychology: Learning, Memory, and Cognition*. 2008; 34:1325–38.
59. Haldeman L, Pérez-Escamilla R, Ferris AM, Drake L, Himmelgreen D, Bonello H, et al. Development of a Color-Coded Bilingual Food Label for Low-Literacy Latino Caretakers. *Journal of nutrition education*. 2000; 32:152–60.
60. Food Standards Agency. Front-of-pack traffic light signpost labelling technical guidance. 2007 Nov.
61. Rensink RA, O'Regan KJ, Clark JJ. To see or not to see: The need for attention to perceive changes in scenes. *Psychological Science*. 1997; 8:368–73.
62. Food and Drink Federation. Front of Pack Labelling: Policy Position. United Kingdom: 2015. [updated June 2, 2015; cited 2015 July 2]; Available from: <https://www.fdf.org.uk/keyissues.aspx?issue=636>
63. Kennedy, B.; Lowe, R. Food and beverage industry announces front-of-pack nutrition labeling initiative to inform consumers and combat obesity. 2010. [updated 10/27/2010; cited 2015 June 4]; Available from: <http://www.gmaonline.org/news-events/newsroom/food-and-beverage-industry-announces-front-of-pack-nutrition-labeling-initi/>
64. Harrison-Dun, A. Don't challenge UK traffic light label, make it EU compulsory, MEP tells commissioners. 2014. [cited 2015 June 4]; Available from: <http://www.foodnavigator.com/Policy/UK-traffic-light-label-should-be-mandatory-MEP-tells-commission>
65. US Food and Drug Administration. Front-of-Package Labeling Initiative. 2014. [updated December 9, 2014; cited 2015 May 28]; Available from: <http://www.fda.gov/Food/IngredientsPackagingLabeling/LabelingNutrition/ucm202726.htm>
66. US White House Task Force on Childhood Obesity. Solving the problem of childhood obesity within a generation. 2010. [updated May]; Available from: http://www.letsmove.gov/sites/letsmove.gov/files/TaskForce_on_Childhood_Obesity_May2010_FullReport.pdf
67. EU lacks appetite for British 'traffic light' food labels. Brussels: 2014. [cited 2015 June 4]; Available from: <http://www.eubusiness.com/news-eu/food-agriculture.y11/>
68. Australian Medical Association (AMA). Traffic Light Labeling: Making healthy food choices easier for Australians. 2011. [updated November 30, 2011; cited 2015 June 4]; Available from: <https://ama.com.au/article/traffic-light-food-labelling>
69. The Royal Australasian College of Physicians. Mandatory front-of-pack 'traffic light labelling' on food and beverages: A policy position statement by the Royal Australasian College of Physicians. [cited 2015 June 4]; Available from: [http://www.foodlabellingreview.gov.au/internet/foodlabelling/submissions.nsf/lookupsubmissionattachments/1atan-85jvsb20100518094116dmlo/\\$file/448a.pdf](http://www.foodlabellingreview.gov.au/internet/foodlabelling/submissions.nsf/lookupsubmissionattachments/1atan-85jvsb20100518094116dmlo/$file/448a.pdf)
70. Commonwealth of Australia. Front-of-pack labelling updates: A summary of the front-of-pack labelling project, including information on the FoPL steering committee and its working group membership and meetings. 2015. [updated May 5, 2015; cited 2015 June 4]; Available from: <http://www.health.gov.au/internet/main/publishing.nsf/Content/foodsecretariat-front-of-pack-labelling-1>
71. Jones G, Richardson M. An objective examination of consumer perception of nutrition information based on healthiness ratings and eye movements. *Public Health Nutrition*. 2007; 10:238–44. [PubMed: 17288620]
72. Roberto CA, Shivaram M, Martinez O, Boles C, Harris JL, Brownell KD. The Smart Choices front-of-package nutrition label. Influence on perceptions and intake of cereal. *Appetite*. 2012; 58:651–7. [PubMed: 22248710]
73. Hammond D, Goodman S, Hanning R, Daniel S. A randomized trial of calorie labeling on menus. *Preventive medicine*. 2013; 57:860–6. [PubMed: 24113263]
74. Van Herpen E, Trijp H. Front-of-pack nutrition labels. Their effect on attention and choices when consumers have varying goals and time constraints. *Appetite*. 2011; 57:148–60. [PubMed: 21554909]
75. Balcombe K, Fraser I, Falco SD. Traffic lights and food choice: A choice experiment examining the relationship between nutritional food labels and price. *Food Policy*. 2010; 35:211–20.

76. Thorndike A, Sonneberg L, Rils J, Barraclough S, Levy D. A 2-phase labeling and choice architecture intervention to improve healthy food and beverage choices. *American Journal of Public Health*. 2012; 102:527–33. [PubMed: 22390518]
77. Levy DE, Riis J, Sonnenberg LM, Barraclough SJ, Thorndike AN. Food choices of minority and low-income employees: a cafeteria intervention. *American Journal of Preventive Medicine*. 2012; 43:240–8. [PubMed: 22898116]
78. Thorndike AN, Riis J, Sonnenberg LM, Levy DE. Traffic-Light Labels and Choice Architecture: Promoting Healthy Food Choices. *American Journal of Preventive Medicine*. 2014; 46:143–9. [PubMed: 24439347]
79. Kim S, Nayga R, Capps O. Food label use, self-selectivity and diet quality. *Journal of Consumer Affairs*. 2001:35.
80. Kreuter M, Brennan L, Scharff D, Lukwago S. Do nutrition label readers eat healthier diets? Behavioral correlates of adults' use of food labels. *American Journal of Preventive Medicine*. 1997; 13:277–83. [PubMed: 9236964]
81. Kristal A, Hedderston M, Patterson R, Neuhauser M. Predictors of self-initiated healthful dietary changes. *Journal of the American Dietetic Association*. 2001; 101:762–6. [PubMed: 11478472]
82. Office of Foods, Center for Food Safety and Applied Nutrition, Center for Veterinary Medicine, Office of Regulatory Affairs. FDA Foods and Veterinary Medicine Program: Strategic Plan; 2012–2016. US Food and Drug Administration; 2012 Apr.



Varied Front-of-Pack Nutrition Labels

Figure 1.

Varied Front of Pack (FOP) Labels ranging from summation logos to those which provide explicit information regarding specific components

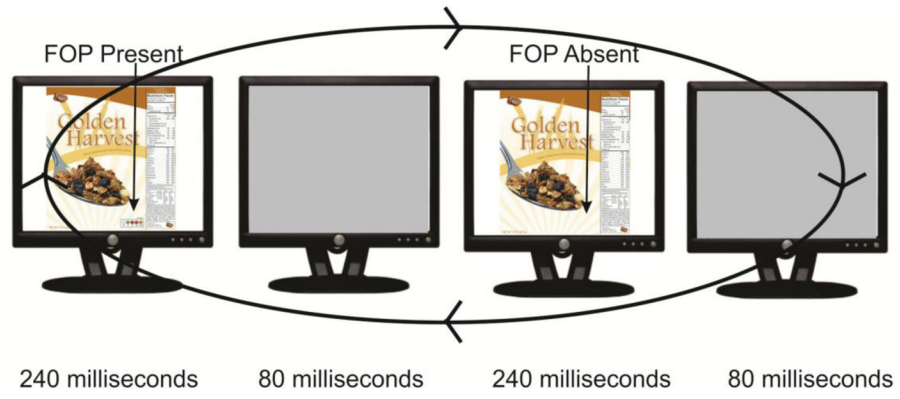


Figure 2.
Change Detection Methodology

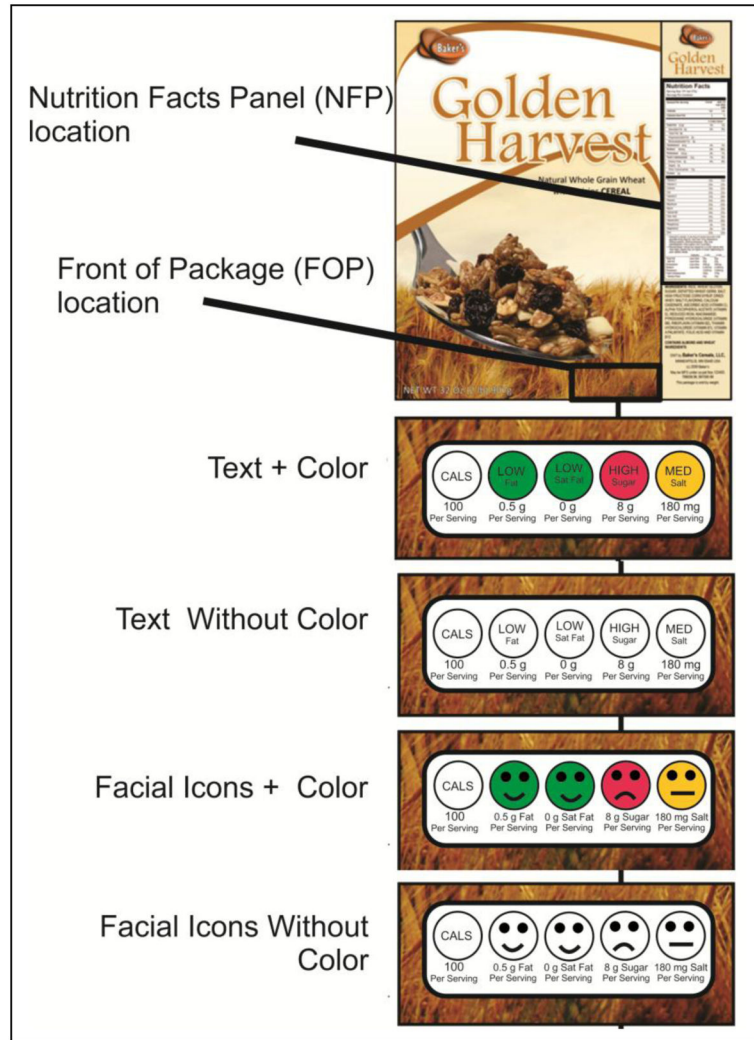


Figure 3.
Label Treatments



Figure 4.
Text Stimulus



(a)

(b)

Figure 5.
 (a) Example stimulus for change detection testing in experiment 1. Flattened Principle Display Panel (PDP) and side panel (NFP). (b) Sectorization of the example stimulus to indicate location of the non critical or filler trials (sectors 105) and critical trials (sectors 6 and 7).

Author Manuscript

Author Manuscript

Author Manuscript

Author Manuscript

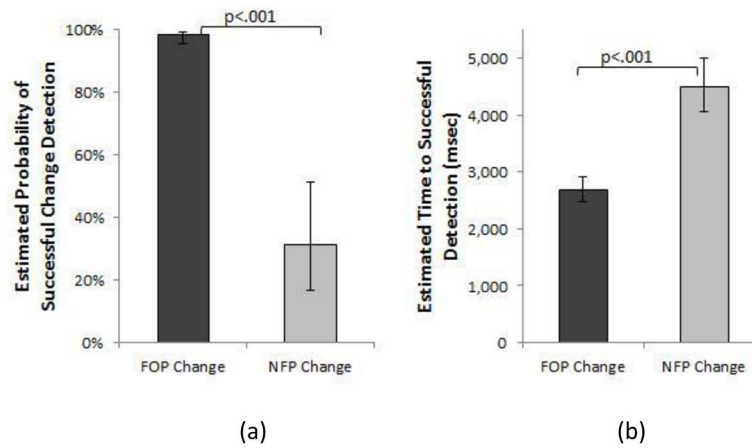


Figure 6.

Estimated probability of successful change detection during the allotted 10 second trial period as a function of whether the change occurred to the FOP or NFP (Panel A). Estimated time to detect the change for those trials in which the change was correctly identified as a function of whether the change occurred to the FOP or NFP (Panel B) Whiskers indicate the 95% confidence interval.

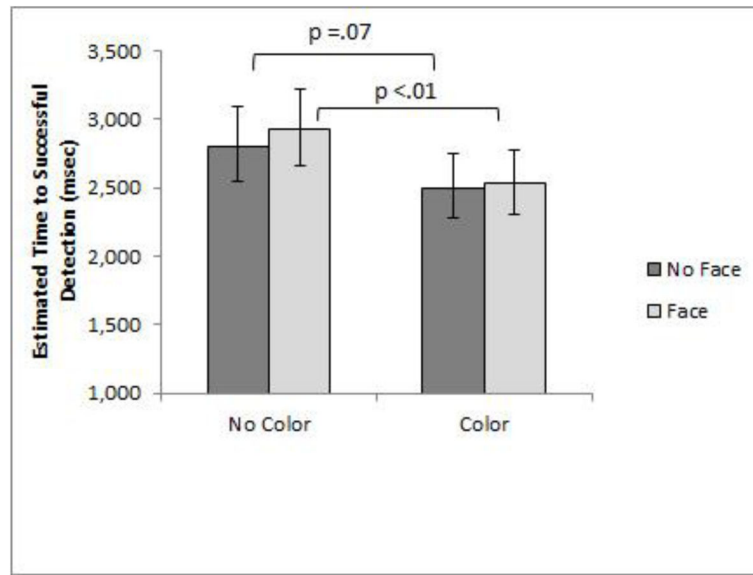


Figure 7. Estimated time to successfully detect an FOP change in Experiment 1 (novel brands) as a function of whether the FOP label had color or facial expressions. Whiskers indicate the 95% confidence interval.

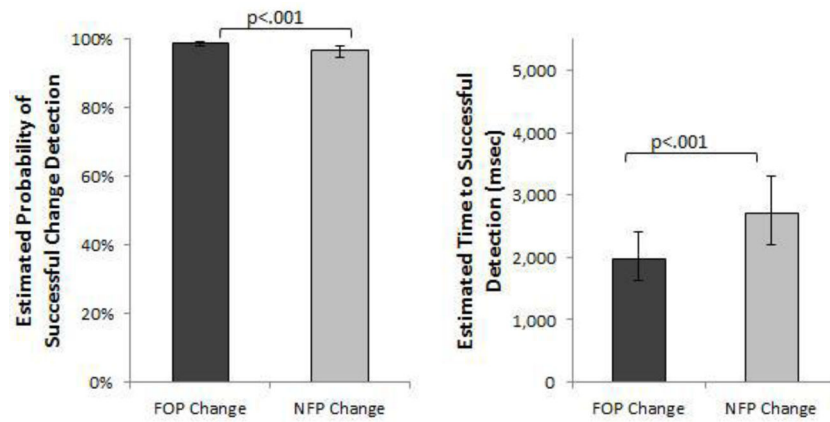


Figure 8.

Experiment 2- Estimated Probability of successful change detection during the allotted 10 second trial period as a function of whether the change occurred to the FOP or NFP (Panel A). Estimated time to detect the change for those trials in which the change was correctly identified as a function of whether the change occurred to the FOP or NFP (Panel B). Whiskers indicate the 95% confidence interval.

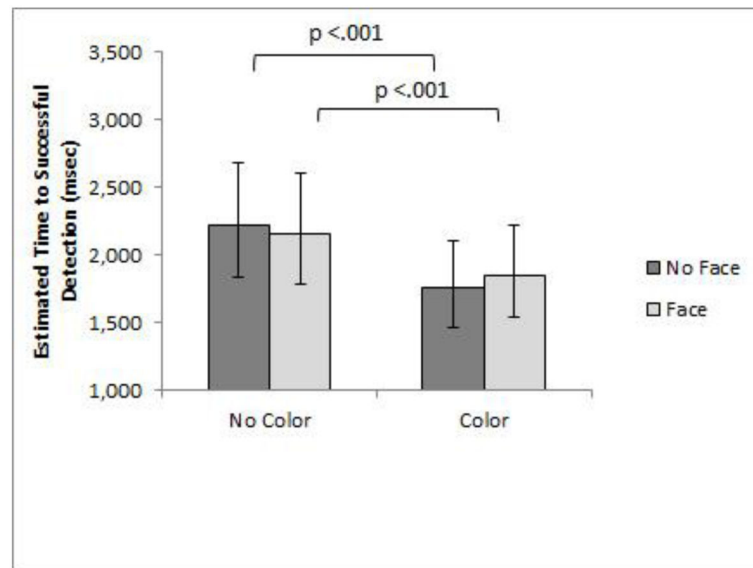


Figure 9. Estimated time to successfully detect an FOP change in Experiment 2 (commercial brands) as a function of whether the FOP label had color or facial expressions. Whiskers indicate the 95% confidence intervals.

Table 1

Serialized Stages of Information Processing

Stage of Processing	Relevance to Nutrition Labeling
1. Exposure to information	The panel with the nutrition information must be visible to the consumer. Given that the front panel (PDP) of a package is customarily displayed in retail environments Front of Pack (FOP) nutrition labels have an advantage over Nutrition Facts Panel (NFP) labels at this stage.
2. Attention to information	The consumer must focally attend to the nutrition information. If FOP designs attract more attention than the NFP, they may have an advantage at this stage.
3. Encoding of information	The consumer must encode the information into working memory. Since the FOP presents a limited number of key nutrients/ingredients, the encoding demands of an FOP may be reduced relative to the NFP.
4. Comprehension of information	The consumer must comprehend the meaning of the information presented in the label. The use of icon and color coding schemes may provide a benefit to FOPs in this stage.
5. Compliance to information	Ideally, the information will catalyze appropriate behavior (selection, consumption). Information can influence behavior only if it completes the prior stages.