



RESEARCH ARTICLE

REVISED Theoretical modelling of epigenetically modified DNA sequences [version 2; referees: 2 approved]

 Alexandra Teresa Pires Carvalho¹, Maria Leonor Gouveia^{1,2}, Charan Raju Kanna¹, Sebastian K. T. S. Wärmländer³, Jamie Platts⁴, Shina Caroline Lynn Kamerlin¹
¹Science for Life Laboratory, Department of Cell and Molecular Biology, Uppsala University, Uppsala, S-751 24, Sweden

²Department of Immunology, Genetics and Pathology, Rudbeck Laboratory, Uppsala, S-751 85, Sweden

³Department of Biochemistry and Biophysics, Stockholm University, Stockholm, S-106 91, Sweden

⁴School of Chemistry, Cardiff University, Cardiff, CF10 3AT, UK

v2 First published: 24 Feb 2015, 4:52 (doi: [10.12688/f1000research.6148.1](https://doi.org/10.12688/f1000research.6148.1))
 Latest published: 06 May 2015, 4:52 (doi: [10.12688/f1000research.6148.2](https://doi.org/10.12688/f1000research.6148.2))
Abstract

We report herein a set of calculations designed to examine the effects of epigenetic modifications on the structure of DNA. The incorporation of methyl, hydroxymethyl, formyl and carboxy substituents at the 5-position of cytosine is shown to hardly affect the geometry of CG base pairs, but to result in rather larger changes to hydrogen-bond and stacking binding energies, as predicted by dispersion-corrected density functional theory (DFT) methods. The same modifications within double-stranded GCG and ACA trimers exhibit rather larger structural effects, when including the sugar-phosphate backbone as well as sodium counterions and implicit aqueous solvation. In particular, changes are observed in the buckle and propeller angles within base pairs and the slide and roll values of base pair steps, but these leave the overall helical shape of DNA essentially intact. The structures so obtained are useful as a benchmark of faster methods, including molecular mechanics (MM) and hybrid quantum mechanics/molecular mechanics (QM/MM) methods. We show that previously developed MM parameters satisfactorily reproduce the trimer structures, as do QM/MM calculations which treat bases with dispersion-corrected DFT and the sugar-phosphate backbone with AMBER. The latter are improved by inclusion of all six bases in the QM region, since a truncated model including only the central CG base pair in the QM region is considerably further from the DFT structure. This QM/MM method is then applied to a set of double-stranded DNA heptamers derived from a recent X-ray crystallographic study, whose size puts a DFT study beyond our current computational resources. These data show that still larger structural changes are observed than in base pairs or trimers, leading us to conclude that it is important to model epigenetic modifications within realistic molecular contexts.

Open Peer Review

Referee Status:

Invited Referees

1 2

REVISED**version 2**published
06 May 2015

report

**version 1**published
24 Feb 2015

report



report

1 Célia Fonseca Guerra, VU University
Amsterdam Netherlands

2 Katja Petzold, Karolinska Institute
Sweden
Discuss this article

Comments (0)

Corresponding authors: Jamie Platts (platts@cardiff.ac.uk), Shina Caroline Lynn Kamerlin (kamerlin@icm.uu.se)

How to cite this article: Carvalho ATP, Gouveia ML, Raju Kanna C *et al.* **Theoretical modelling of epigenetically modified DNA sequences [version 2; referees: 2 approved]** *F1000Research* 2015, 4:52 (doi: [10.12688/f1000research.6148.2](https://doi.org/10.12688/f1000research.6148.2))

Copyright: © 2015 Carvalho ATP *et al.* This is an open access article distributed under the terms of the [Creative Commons Attribution Licence](#), which permits unrestricted use, distribution, and reproduction in any medium, provided the original work is properly cited. Data associated with the article are available under the terms of the [Creative Commons Zero "No rights reserved" data waiver](#) (CC0 1.0 Public domain dedication).

Grant information: This work was supported by the Swedish Research Council (Vetenskapsrådet, 2010-5026) and funding from the Sven and Ebba Christina Hagbergs Foundation.

The funders had no role in study design, data collection and analysis, decision to publish, or preparation of the manuscript.

Competing interests: No competing interests were disclosed.

First published: 24 Feb 2015, 4:52 (doi: [10.12688/f1000research.6148.1](https://doi.org/10.12688/f1000research.6148.1))

REVISED Amendments from Version 1

Figure 1 has been updated to include numbering, a new Figure S1 has been inserted. Figure captions have been updated for clarity, as have a number of points in the text in response to reviewer requests. For more details, see the point-by-point response to reviewers.

See referee reports

Introduction

The standard four-letter alphabet used to encode genetic information in DNA is a central tenet of molecular biology. However, *in vivo* chemical modification of bases can expand this alphabet markedly, giving rise to a host of important biological phenomena¹. Epigenetic modifications, most importantly DNA methylation and histone variation, have the potential to affect gene expression, and are believed to play a major role in the complex pattern of development and differentiation of multi-cellular organisms. Fascinatingly, such modifications may be heritable despite not affecting DNA sequence, although the mechanism(s) by which this could be achieved are currently unknown. For details of currently proposed mechanisms please see reference 1 and work cited therein.

The most common and biologically important such modification involves methylation of the 5 position of cytosine (C) to form 5-methylcytosine (5-mC), illustrated in Figure 1. This does not strongly affect the ability of the base to pair with guanine (G), and in mammals is generally found in CpG sequences, though bacteria

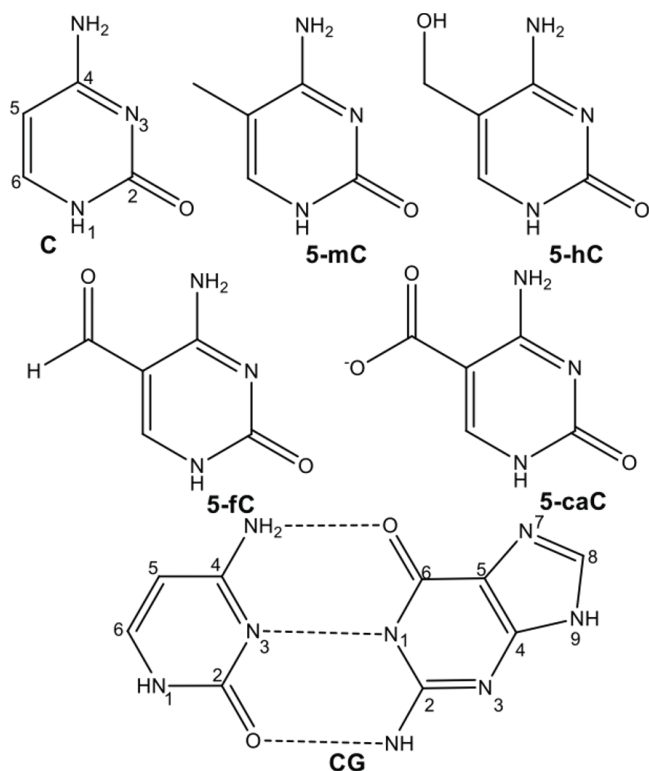


Figure 1. Structures of cytosine and its epigenetic modifications.

and plants display less sequence specificity². Oxidation of 5-mC can form 5-hydroxymethylcytosine (5-hmC), which is believed to be involved in regeneration of C *via* ten-eleven translocation (TET) proteins. Moreover, recent work has shown that 5-formylcytosine (5-fC), and 5-carboxymethylcytosine (5-caC) are present in stem cells and organs of mice³.

The structural consequences of cytosine methylation and related modifications were the focus of a recent study⁴ that used X-ray crystallography to show that incorporation of 5-mC or 5-hmC at different points in the d(CGCGAATTCGCG) dodecamer has a negligible effect on both local (base pair) and global (helical) geometry, although specific preference for the orientation of the hydroxyl group in the latter was clearly evident. However, while elegant, the resolution of these studies (between 1.42 and 1.99 Å) may mean that subtle structural changes could go unnoticed. Therefore, molecular modelling, whether based on quantum or classical mechanics, has the potential to contribute significantly in this field. Quantum mechanical models, typically using density functional theory (DFT), have been used to examine the base pairing and stacking of both unmodified (wild-type) and 5-mC DNA. Many groups, including those of Fonseca-Guerra⁵⁻⁷, Šponer⁸⁻¹³, Leszczynski¹⁴⁻¹⁶ and others have used DFT to great effect in understanding the structure and properties of unmodified DNA. Regarding epigenetic modifications in particular, Acosta-Silva *et al.*¹⁷ showed in this manner that methylation enhances stacking interactions, and can produce local distortions in base-pair step parameters, most notably in the slide parameter. Yusufaly *et al.* used similar calculations to show that methylation can induce over-twisting as well as softer modes for distortion from the global energy minimum¹⁸. We recently employed classical mechanics to examine not only the structure but also the flexibility of different DNA sequences with methyl and hydroxymethyl substituents¹⁹. Through use of extended molecular dynamics (MD) simulations, we showed that structural effects are subtle, but that epigenetic modifications can give rise to changes in twist, roll and tilt angles that are markedly sequence-dependent. Moreover, introduction of 5-mC within a sequence that already contains hydrophobic groups in the major groove strongly affects hydration patterns, whereas an isolated 5-mC has a lesser effect on solvation and structure.

In this work, we use DFT and QM/MM methods to examine model systems containing modified cytosines. These range from individual base pairs, through double-stranded trimers, to heptamers. By including the sugar-phosphate backbone, sodium counterions and solvent we suggest that these are more realistic models than previous work using similar methods. However, a trimer of DNA brings us close to the size limit for application of DFT with the computing resources available to us. We therefore test and employ hybrid QM/MM methods for larger systems, in which the central bases are treated with dispersion-corrected DFT, while outer bases, sugar-phosphate backbone and solvent (where appropriate) with a molecular mechanics approach, thus allowing accurate and efficient description of systems consisting of hundreds of atoms.

Computational methodology

The initial structures of model systems were built in the canonical B-DNA geometry, using the w3DNA server²⁰. Hydrogen atoms were added to the system according to expected protonation states at

physiological pH using the Molecular Operating Environment (MOE) software package, and Na⁺ were added manually in the vicinity of each phosphate group to produce an overall neutral structure. Where relevant, the central cytosine was also manually modified, and the results of all simulations were analysed using the X3DNA software package^{21,22}. Atomic coordinates of wild-type, methylated and hydroxymethylated DNA dodecamers were obtained from X-ray structures deposited in the Protein Data Bank (PDB IDs: 1BNA, 4GJU, 4GLG, 4GLH and 4GLC)²³, and truncated to 5'-ATTCGCG-3' heptamers containing a single modification on the central C. All DNA termini were capped with methyl groups for simplicity.

All DFT calculations were performed with the Gaussian09 simulation package²⁰, using default SCF and geometry optimisation criteria. Throughout, we use Grimme's B97-D functional²⁴, that includes an explicit correction for the missing dispersion term in conventional DFT functionals, with either def2-TZVP or 6-31+G(d,p) basis set. This was previously recommended after thorough benchmarking for thermochemistry, kinetics, and non-covalent interactions²⁵. All such calculations took advantage of the density fitting approximation, and where appropriate included the effect of aqueous solvation *via* the use of the polarized continuum model (PCM)²⁶. Binding energies are corrected for the effects of basis set superposition error using the counterpoise method²⁷.

Hybrid QM/MM calculations were performed using the ONIOM approach with electrostatic embedding²⁸, as implemented in Gaussian09. The boundary between the quantum and classical regions was chosen as the N-C1' glycosidic bond in the relevant nucleotide. The QM regions were saturated by the use of a "link" hydrogen atom placed along the N-C1' vector at an idealized distance, and were modelled at the B97-D/6-31+G(d,p) level of theory, again within PCM water. The MM part of these calculations employed the AMBER force field parm96²⁹, as defined within Gaussian09. The subtractive nature of the ONIOM method means that undefined terms in the MM expression do not contribute to the overall energy if the relevant atoms are entirely within the QM region, making it ideally suited for the purposes of the current study. We note that this approach has been widely adopted for QM/MM studies of DNA and related structures³⁰⁻³². Pure molecular mechanics (MM) geometry optimisation was also performed using the GROMACS simulation package³³ and the AMBERparmbsc0 force field³⁴, including RESP charges derived for modified bases in our previous work¹⁹, in explicit aqueous phase, specifically TIP3P water³⁵ with Na⁺ and Cl⁻ counter ions to create a neutral system. Full details of the MM treatment can be found in ref. 19.

Results and discussion

Gas-phase base pairs

To examine the effect of modifications on base pairing we examined the structure and energy of gas-phase CG pairs in both hydrogen bonded and stacked orientations, with results reported in Table 1 and Table 2 respectively. These data show that methylation has little effect on the geometry or stability of the Watson-Crick base pair. The presence of a hydroxymethyl slightly weakens the N₄-H₄...O₆ H-bond, perhaps due to the proximity of CH₂OH and NH₂ groups, reported as X...H₄ in Table 1. Formyl has a larger effect overall, lengthening N₃...H₁-N₁ and O₂...H₂-N₂ H-bonds and

hence reducing binding by over 3 kcal/mol, presumably due to the electron withdrawing effect of the formyl group, an effect that has been clearly documented before³⁶⁻³⁸. The pattern of changes induced by carboxylate is different from all other modifications, lengthening the peripheral H-bonds N₄-H₄...O₆ and O₂...H₂-N₂ markedly, but shortening N₃...H₁-N₁. Despite this weakening, the carboxylate-substituted cytosine binds most strongly to guanine, presumably due to ion-dipole interactions within the anionic system. Both formyl and carboxylate contain close O...H₄ contacts, but overall the proximity of these groups does not appear to be related to strength or geometry of binding.

As well as the effect on H-bonding, epigenetic modifications can alter the stacking behaviour of DNA bases. Table 2 reports geometrical details, as well as binding energies, of the five modified cytosines considered here stacked with guanine. All such calculations started from the idealised B-DNA orientation (Cent...Cent = 4.390 Å, Dihedral = 4.9°), and overall this is retained in our gas-phase DFT optimisation. Table 2 shows that methylation leads to closer contact and greater stabilisation between bases, as might be expected due to the increased polarizability of this modified base. Hydroxymethylation leads to the most stable pair considered here, largely due to a strong H-bond between the H—O of hydroxymethyl and O6 of guanine (H...O = 1.770 Å), whereas formylation leads to longer, weaker interaction between bases. Carboxylate-substituted cytosine is the only case considered here that loses the approximately

Table 1. Hydrogen bond lengths and binding energies of CG Watson-Crick base pairs from B97-D/def2-TZVP (Å and kcal/mol).

	N ₄ -H ₄ ...O ₆	N ₃ ...H ₁ -N ₁	O ₂ ...H ₂ -N ₂	X...H ₄ ^a	Binding Energy
C	1.663	1.819	1.835	2.455	-31.19
5-mC	1.660	1.817	1.822	2.375	-31.70
5-hC	1.689	1.822	1.835	2.145	-28.63
5-fC	1.670	1.834	1.884	1.990	-28.07
5-caC	1.698	1.778	1.874	1.674	-34.62

^a X refers to the atom of the substituent on position 5 closest to H₄.

Table 2. Geometry and binding energies of stacked CG base pairs from B97-D/def2-TZVP (Å, ° and kcal/mol).

	Cent...Cent ^a	Dihedral ^a	Binding Energy
C	3.381	9.0	-16.07
5-mC	3.310	12.5	-17.52
5-hC	3.361	9.4	-22.12
5-fC	3.451	2.9	-14.65
5-caC	3.823	32.6	-15.56

^a Cent...Cent refers to the distance between centroids of 6-membered rings; Dihedral refers to the angle between mean planes of rings.

parallel orientation of bases. This appears to be driven as much by repulsion between the carboxylate group and $C=O_6$ of guanine as by H-bonding.

Double-stranded DNA trimers

While these gas-phase dimers give useful information on the intrinsic effect of modifications on cytosine's ability to interact with guanine, environmental effects including the DNA sequence, sugar-phosphate backbone and solvent will play a major role in determining their effect in real systems. In order to better simulate the behaviour of modified cytosines in real systems, structures of

double-stranded d(GCG) and d(ACA), as well as epigenetic modifications to the central cytosine were optimised using DFT in continuum solvent (PCM), and the resulting geometries of the local base pairs were analysed in the coordinate frame recommended by Olson *et al.*³⁹. Unlike the free dimers considered above, modifications have only subtle effects on this larger structure, which retains the overall canonical B-DNA shape of the unmodified WT structure.

Following Zubatiuk *et al.*¹⁴, we summarise key aspects of trimer structure, which are displayed graphically in [Figure 2](#) and [Figure 3](#).

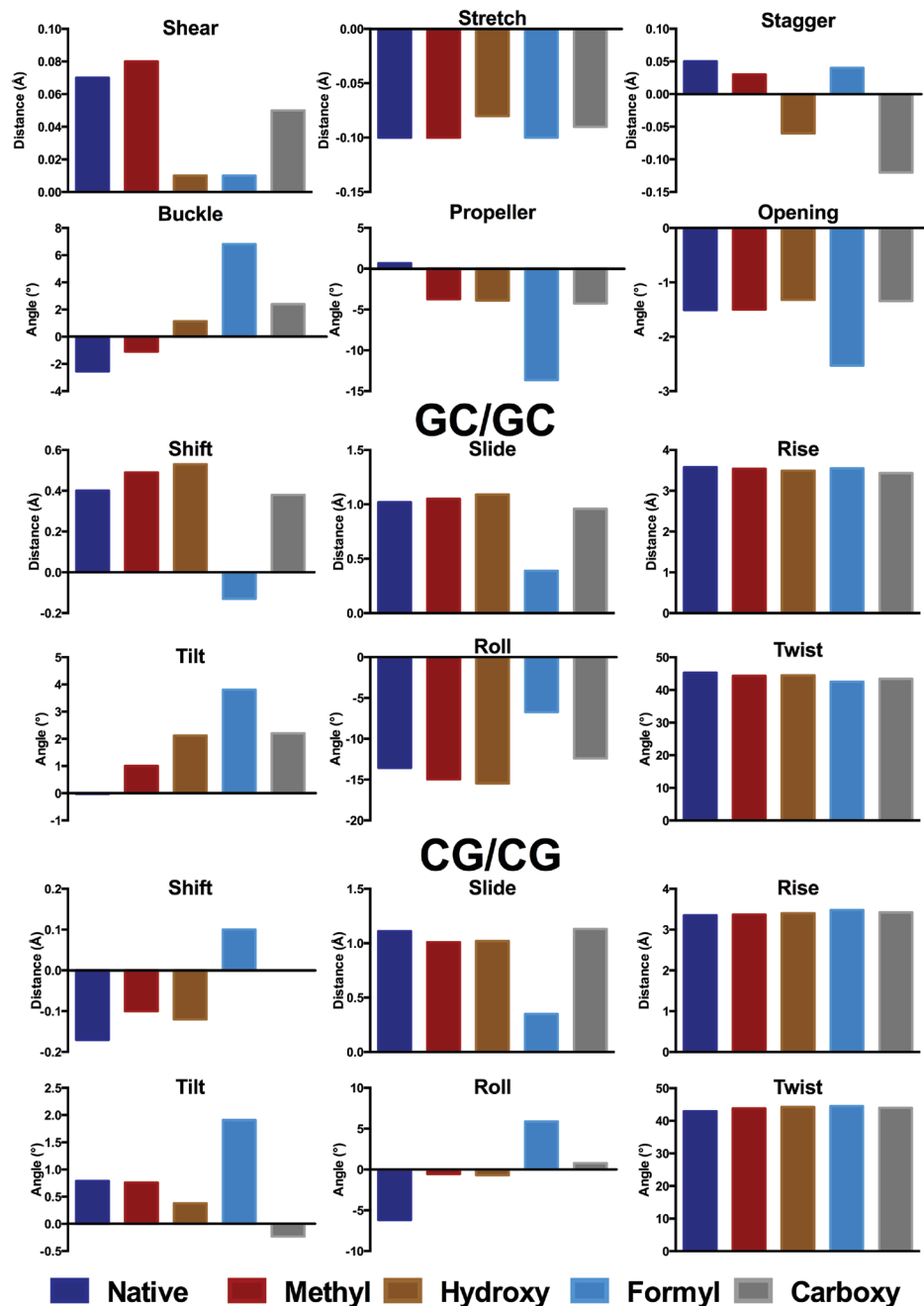


Figure 2. Base pair (A) and step (B, C) parameters for central GC and modifications thereof in d(GCG) (Å and °). The corresponding data are provided in [Data file 1](#).

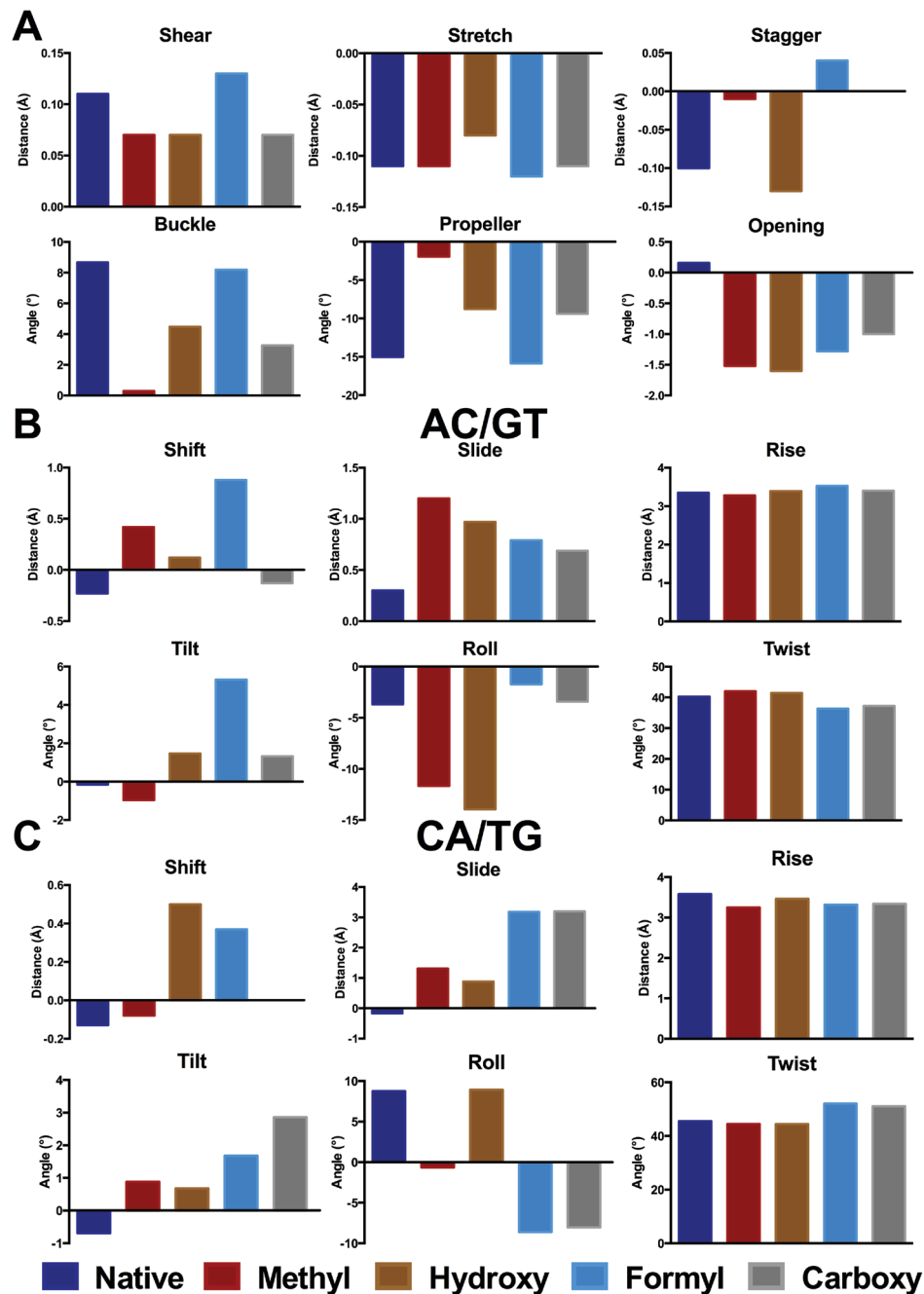


Figure 3. Base pair (A) and step (B, C) parameters for central GC and modifications thereof in d(ACA) (Å and °). The corresponding data are provided in [Data file 1](#).

The corresponding values are tabulated in [Data file 1](#) of the Supporting Information, with the base step and local helical parameters tabulated in [Data file 2](#). As with Zubatiuk *et al.*¹⁴, base pair step parameters are averaged over 3' and 5' directions. In the GCG oligomer, methylation has only a small effect on base pair distances, but does alter the propeller angle by over 4°. Hydroxymethylation has a larger effect on the GCG oligomer, especially on the stagger, buckle and propeller, whereas the stretch and opening parameters

are much less affected. Formyl does not strongly affect base pair distances but does change angles substantially, especially buckle and propeller, which change by as much as 10°. In contrast, carboxylate induces a large change in stagger but only small changes in angular geometry. Base pair step parameters for d(GCG) in general are less affected than those for the base pair noted above, with the exception of formyl which exhibits smaller slide and less negative roll values than unmodified DNA.

Rather larger changes are evident on modification of d(ACA), as shown in Figure 3. In this case, even methylation induces significant changes in distances, especially stagger which increases by 0.1 Å, and angles (buckle and propeller change by 8 and 13°, respectively). At the base pair step level, methylation gives rise to substantial increase (0.9 and 1.5 Å) in slide and more negative roll in both 3' and 5' directions. Less apparent in Figure 3, but still notable, are changes in rise that are 0.1 and 0.3 Å smaller in the methylated structure, reflecting the greater stacking that results from addition of a methyl group. Other modifications induce different patterns of structural change: for the central base pair these changes are typically smaller than for methylation, but for base pair steps much larger changes are found in some parameters. Most notable of these are slide, which changes by over 3 Å and roll (up to 17°) in the 3' direction, in a similar way to that reported previously for smaller systems^{17,18}. Other parameters such as the width of the DNA strand, measured as the distance between C1' nuclei, and virtual angles λ_Y and λ_R , which describe the pivoting of complementary bases in the base-pair plane, vary only slightly from the idealised values for B-DNA.

QM/MM studies of double-stranded oligomers

The oligomers considered so far are close to the limit of our computational capabilities of current DFT methods (the largest structure, carboxylated d(ACA), has 962 electrons in 2743 basis functions), such that longer sequences cannot currently be routinely studied in this manner. However, they are too small to correctly represent how DNA behaves in a real system, where the conformations adopted by each base pair step depend on the neighbouring step. Moreover, simulations of nucleic acids are known to suffer problems due to greater elasticity of the terminal part of the structure (the so called "end-effect"⁴¹). For these reasons, these small oligomers are inadequate models to probe the effects of epigenetic modifications on the structure of DNA. We therefore turn to hybrid QM/MM methods, in which a subset of the atoms in the system is treated with DFT, and the remainder of the system with much faster molecular mechanics methods. In order to test the validity of this approach, methylated GCG was optimised using either only two or six bases in the QM region (Figure 4). These tests show that including only two bases in the QM region leads to significant differences in geometry to that obtained from DFT, particularly in the stagger and buckle

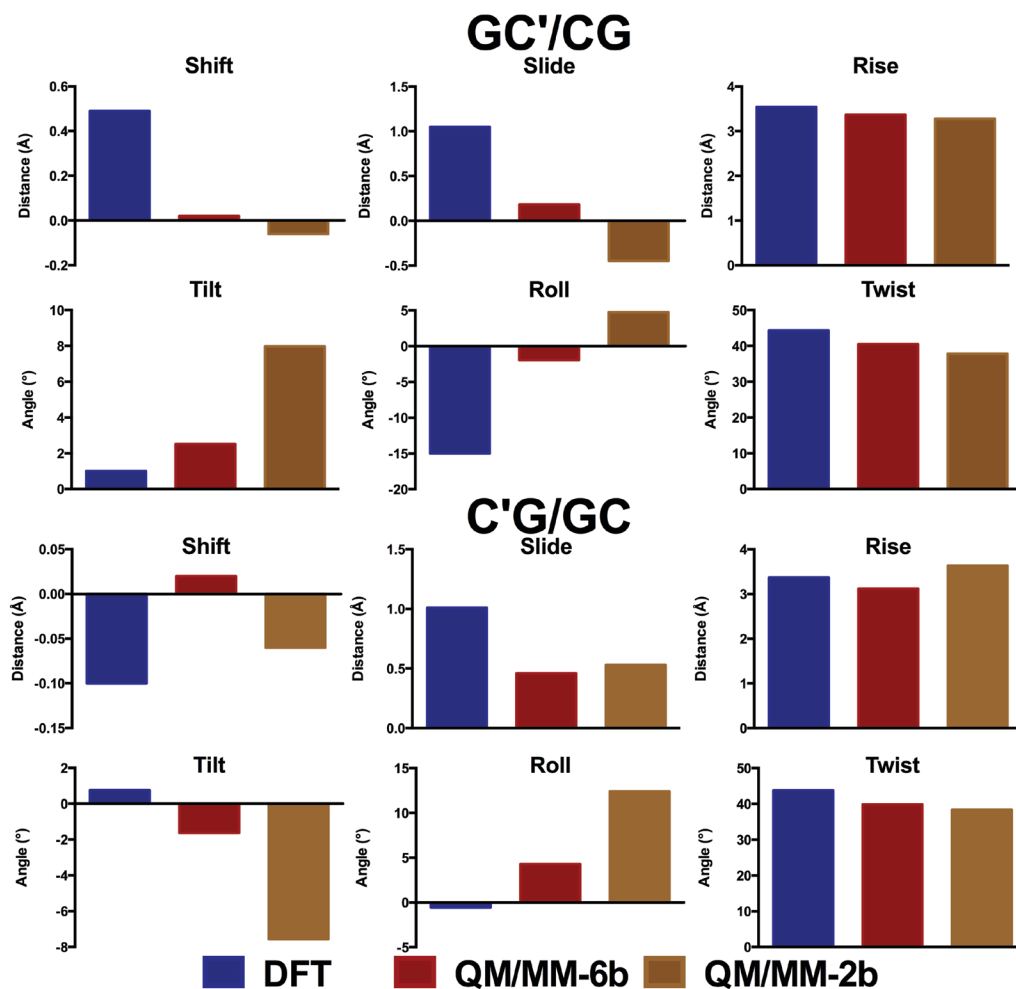


Figure 4. Comparison of QM/MM with DFT geometry for central GC and modifications thereof in d(GCG) (Å and °). The corresponding values are shown in Data file 3 and Data file 4.

coordinates. In contrast, including six bases in the QM region reproduces the DFT structure reasonably well. Similar observations were made from analogous treatment of methylated ACA (data not shown).

As a further test, we also compared DFT and QM/MM derived structures with those optimised using the force field parameters

developed in our previous work. Figure 5 shows the base-pair parameter values of the methylated structure d(GC'G) for the different methods. The MM structures provide very close values to those obtained by both QM/MM and DFT approaches, showing slight difference only in the stagger and propeller angle. We can therefore conclude that for small DNA oligomers, DFT, QM/MM and MM methods can all produce almost equally adequate DNA

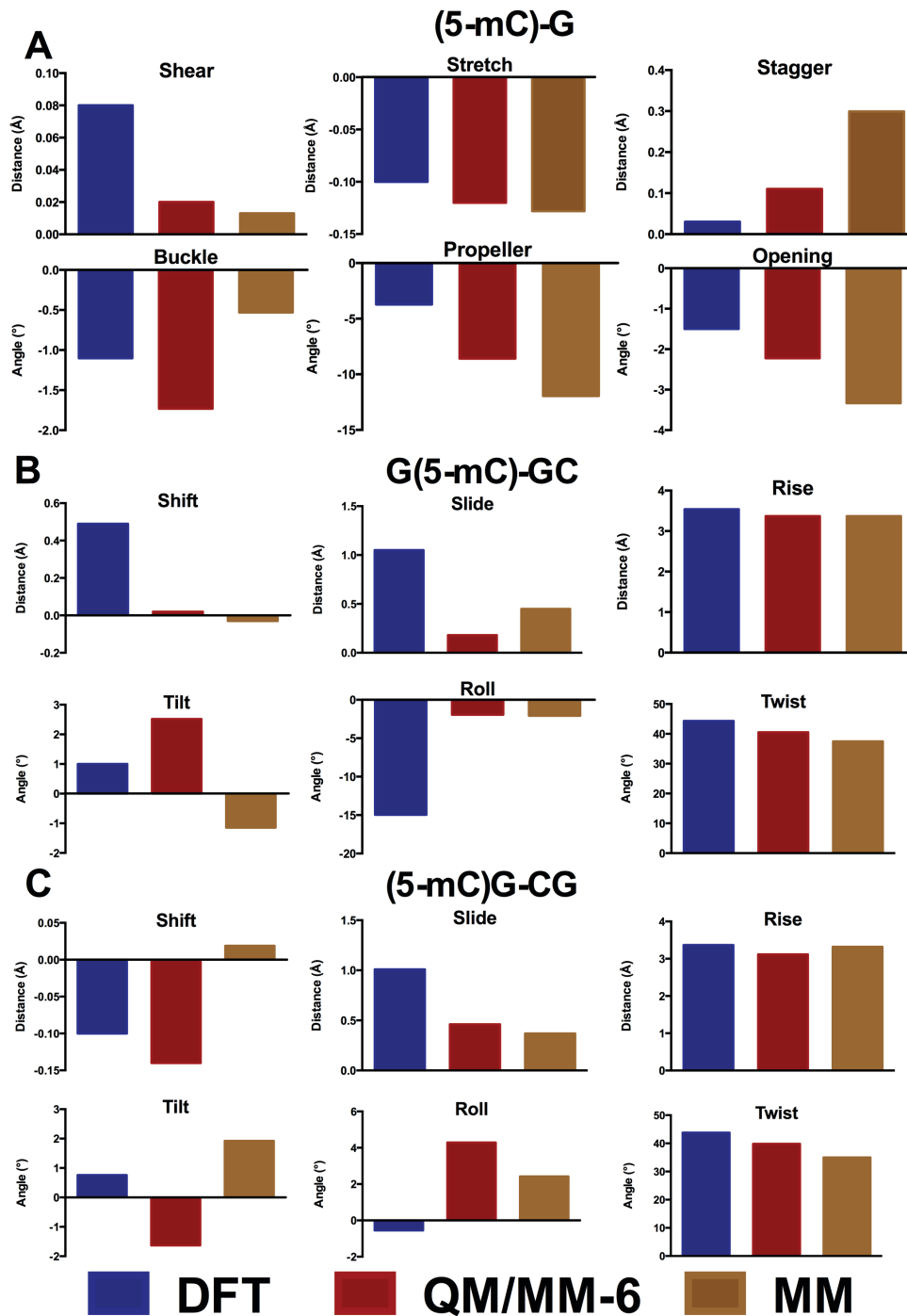


Figure 5. Comparison of DFT, QM/MM and molecular mechanics energy minimised (EM) geometries of d(GC'G) (Å and °). The corresponding values are shown in [Data file 3](#)–[Data file 6](#).

structures, but that QM/MM and MM approaches are more similar to one another than those obtained from DFT alone.

QM/MM geometry optimisation with six bases in the QM region was then applied to a set of larger DNA sequences. The experimental structure of Renčik *et al.*⁴ obtained using X-ray diffraction (PDB Entry 4GLG) was truncated to a sequence of 7 base pairs, i.e. 5'-ATT CGCG-3', and the central 6 bases (TCG//CGA) assigned as QM atoms. The remaining atoms, including crystallographic water molecules and counterions, were assigned to the MM layer, and the entire system was geometry optimised. The resulting optimised structure of the system with methylated C in the central position is shown in Figure 6. Base pair and base pair step geometries of wild type, methylated, hydroxymethylated structures optimised with QM/MM, along with experimental values for methylated C, are shown in Figure 7.

We find that the structural effect of methylation is larger in this longer sequence than in the trimers considered above. Particularly, the optimised values of shear, stagger and buckle of the central base pair differ markedly between the methylated and WT forms of DNA. In contrast, the base pair step parameters exhibit rather smaller changes. For the hydroxymethylated structures, we observe similar profiles to the methylated structures. Furthermore, our simulations also allow us to probe the preferred orientation of the hydroxymethyl group: our DFT calculations predict a slight preference for the OH group to point in 3' over 5' and an optimised of C6-C5-C5A-O5 torsion angle of 118.4°, while previous MD

simulations show this torsion to vary between 85 and 120° over 100 ns of simulation¹⁹. This is in good agreement with the experimental and theoretical results of Renčik *et al.*⁴², who reported values between 72 and 133° using X-ray diffraction methods.

Data of theoretical modelling of epigenetically modified DNA sequences

7 Data Files

<http://dx.doi.org/10.6084/m9.figshare.1310448>

Conclusions

Through use of modern, dispersion-corrected DFT and hybrid QM/MM methods, we have examined the structural consequences of epigenetic modifications of DNA. Concentrating on methylation and related modifications of cytosine, we show that the overall Watson-Crick base-pairing is retained, with rather small changes to hydrogen bond and stacking geometries. Despite this, some modifications have a substantial effect on the strength of intermolecular interactions: hydroxymethyl and formyl groups reduce H-bonding strength, while carboxylate increases this markedly.

Situating these modifications within the double-stranded DNA trimers GCG and ACA allows us to examine the effects on the central CG base pair and base pair steps. Base pair geometries undergo rather larger changes within ACA than in GCG, with changes in buckle and propeller angles particularly apparent. Changes to base

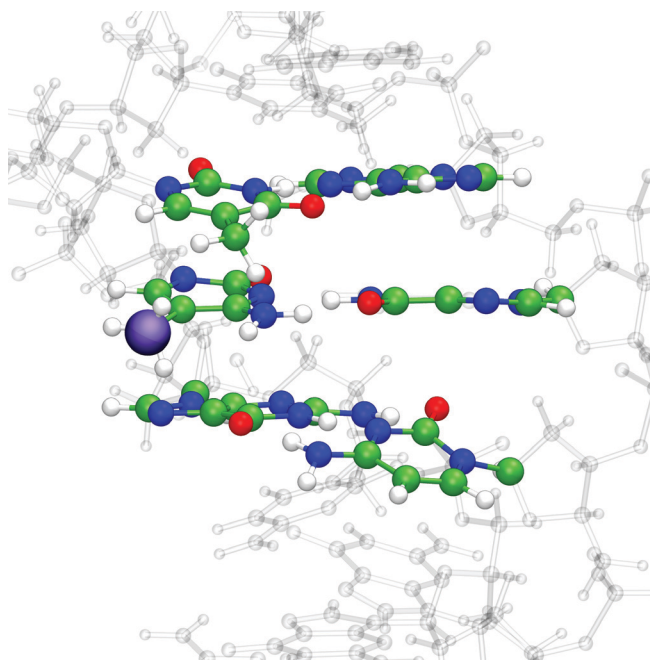


Figure 6. QM/MM optimised structure of 5'-ATTTCGCG-3' with 5-mC in central position, and the bases defined as QM atoms shown in CPK. A purple sphere highlights the methylation position, and water molecules and counterions have been omitted for clarity.

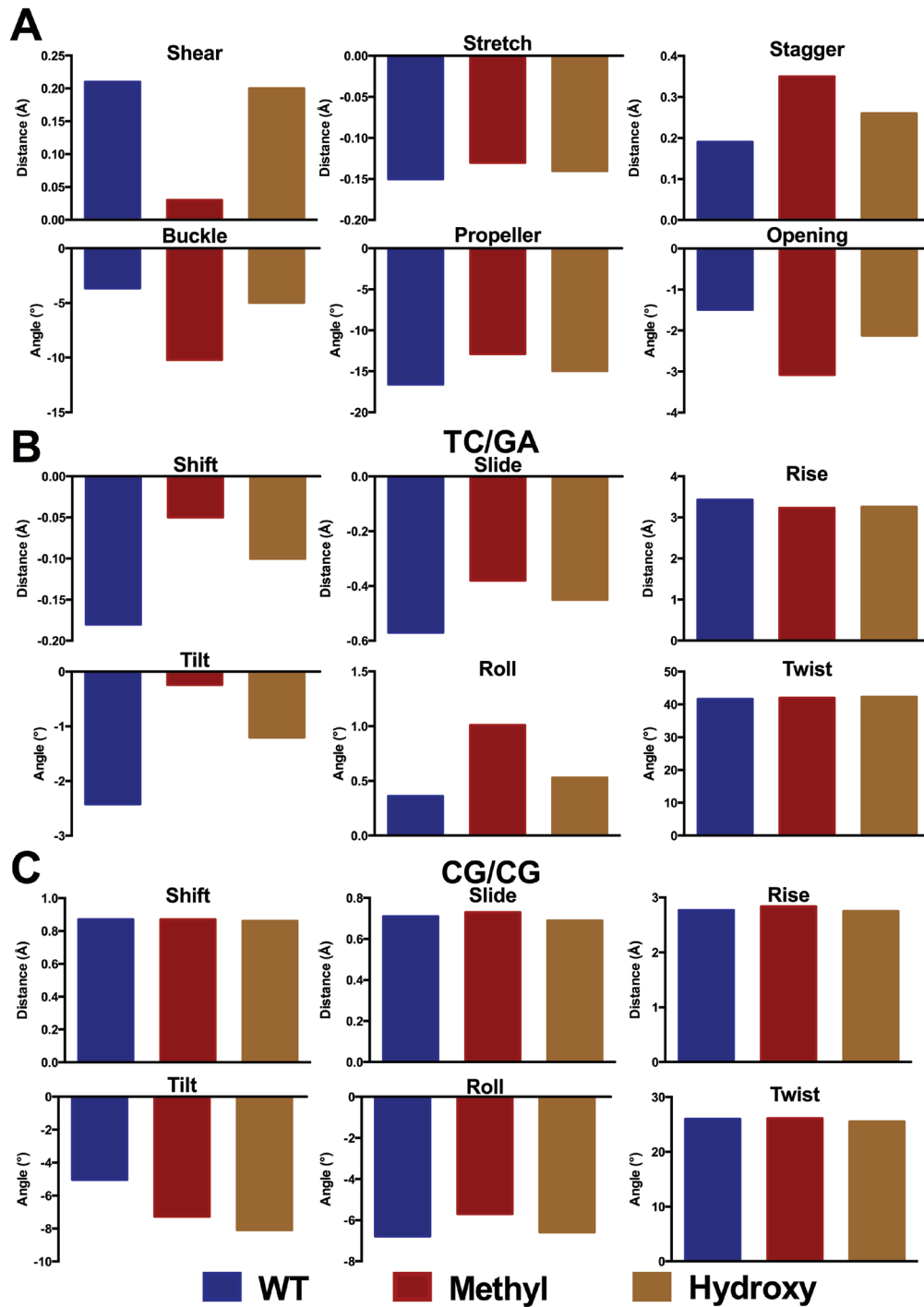


Figure 7. Base pair step parameters for central GC and modifications thereof in 5'-ATT CGCG-3' (Å and °) taken from QM/MM optimisation. The corresponding values are shown in [Data file 2](#).

pair steps are smaller, although some changes in shift and slide values due to modifications are evident. Optimised geometries also act as a useful test of hybrid QM/MM methods. These can reproduce DFT structures if all six bases are included in the QM region, but if only the central base pair is treated with QM significant differences result. This approach is then applied to heptamers derived from a recent X-ray crystallography; here again, the central base pair is found to be significantly disrupted, whereas base pair step parameters are largely retained.

The studies reported here deal solely with static structures, but it is well-known that DNA is a flexible system that is in constant motion at biologically relevant temperatures. In previous work, we showed that long timescale molecular dynamics was able to highlight subtle differences in structure, flexibility and solvation resulting from incorporation of 5-mC and 5-hC in several different DNA sequences. The work reported here gives new insight into the intrinsic effects of epigenetic modification of cytosine, complementing our previous molecular dynamics study¹⁹ as well as providing support for the molecular mechanics force field chosen for that work.

Data availability

Figshare: Data of theoretical modelling of epigenetically modified DNA sequences. Doi: [10.6084/m9.figshare.1310448](https://doi.org/10.6084/m9.figshare.1310448)⁴³

Author contributions

SKTSW, JP and SCLK conceived the study. AC, JP and SCLK designed the research. AC, LG and CRK contributed to design of the research. JP carried out the research. JP and SCLK prepared the first draft of the manuscript. All authors analysed data and contributed to preparation of the manuscript. All authors were involved in the revision of the draft manuscript, and have agreed to the final content.

Competing interests

No competing interests were disclosed.

Grant information

This work was supported by the Swedish Research Council (Vetenskapsrådet, 2010-5026) and funding from the Sven and Ebba Christina Hagbergs Foundation.

We confirm that the funders had no role in study design, data collection and analysis, decision to publish, or preparation of the manuscript.

Acknowledgements

JAP is grateful to Advanced Research Computing @ Cardiff (ARCCA) for use of computing facilities.

Supplementary material

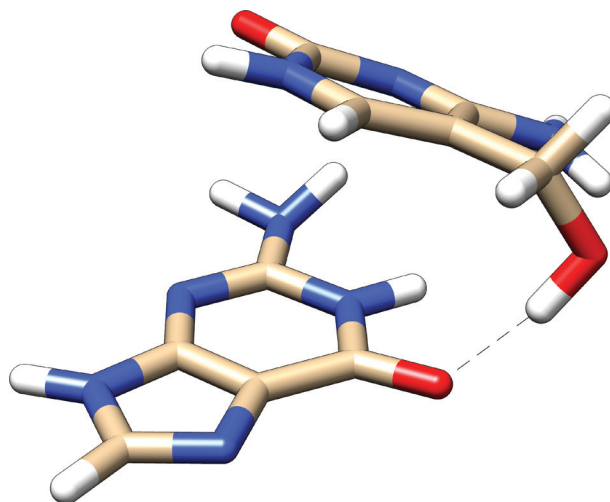


Figure S1. Optimised geometry of stacked 5-hC...G, showing the hydrogen bond to the O6 atom of G. Cartesian coordinates of all optimised structures from this work are provided in the data widget.

References

- Korlach J, Turner SW: **Going beyond five bases in DNA sequencing.** *Curr Opin Struc Biol.* 2012; **22**(3): 251–61.
[PubMed Abstract](#) | [Publisher Full Text](#)
- Colot V, Rossignol JL: **Eukaryotic DNA methylation as an evolutionary device.** *Bioessays.* 1999; **21**(5): 402–11.
[PubMed Abstract](#)
- Ito S, Shen L, Dai Q, *et al.*: **Tet proteins can convert 5-methylcytosine to 5-formylcytosine and 5-carboxylcytosine.** *Science.* 2011; **333**(6047): 1300–3.
[PubMed Abstract](#) | [Publisher Full Text](#) | [Free Full Text](#)
- Renčuk D, Blacque O, Vorlickova M, *et al.*: **Crystal structures of B-DNA dodecamer containing the epigenetic modifications 5-hydroxymethylcytosine or 5-methylcytosine.** *Nucleic Acids Res.* 2013; **41**(21): 9891–900.
[PubMed Abstract](#) | [Publisher Full Text](#) | [Free Full Text](#)
- Barone G, Guerra CF, Bickelhaupt FM: **B-DNA structure and stability as function of nucleic acid composition: Dispersion-corrected DFT study of dinucleoside monophosphate single and double strands.** *ChemistryOpen.* 2013; **2**(5–6): 186–193.
[PubMed Abstract](#) | [Publisher Full Text](#) | [Free Full Text](#)
- van der Wijst T, Guerra CF, Swart M, *et al.*: **Performance of various density functionals for the hydrogen bonds in DNA base pairs.** *Chem Phys Lett.* 2009; **426**(4–6): 415–421.
[PubMed Abstract](#) | [Publisher Full Text](#)
- Poater J, Swart M, Guerra CF, *et al.*: **Solvent effects on hydrogen bonds in Watson–Crick, mismatched, and modified DNA base pairs.** *Comp Theoret Chem.* 2012; **998**: 57–63.
[PubMed Abstract](#) | [Publisher Full Text](#)
- Mládek A, Šponer JE, Jurečka P, *et al.*: **Conformational energies of DNA sugar-phosphate backbone: Reference QM calculations and a comparison with density functional theory and molecular mechanics.** *J Chem Theory Comput.* 2010; **6**(12): 3817–3835.
[PubMed Abstract](#) | [Publisher Full Text](#)
- Svozil D, Hobza P, Šponer J: **Comparison of intrinsic stacking energies of ten unique dinucleotide steps in A-RNA and B-DNA duplexes. Can we determine correct order of stability by quantum-chemical calculations?** *J Phys Chem B.* 2009; **114**(2): 1191–1203.
[PubMed Abstract](#) | [Publisher Full Text](#)
- Banáš P, Mládek A, Otyepka M, *et al.*: **Can we accurately describe the structure of adenine tracts in B-DNA? Reference quantum-chemical computations reveal overstabilization of stacking by molecular mechanics.** *J Chem Theory Comput.* 2012; **8**(7): 2448–2460.
[PubMed Abstract](#) | [Publisher Full Text](#)
- Fonville JM, Swart M, Vokacova Z, *et al.*: **Chemical shifts in nucleic acids studied by density functional theory calculations and comparison with experiment.** *Chemistry.* 2012; **18**(39): 12372–87.
[PubMed Abstract](#) | [Publisher Full Text](#)
- Mládek A, Šponer JE, Kulhánek P, *et al.*: **Understanding the sequence preference of recurrent RNA building blocks using quantum chemistry: The intrastand RNA dinucleotide platform.** *J Chem Theory Comput.* 2011; **8**(1): 335–347.
[PubMed Abstract](#) | [Publisher Full Text](#) | [Free Full Text](#)
- Morgado CA, Svozil D, Turner DH, *et al.*: **Understanding the role of base stacking in nucleic acids. MD and QM analysis of tandem GA base pairs in RNA duplexes.** *Phys Chem Chem Phys.* 2012; **14**(36): 12580–91.
[PubMed Abstract](#) | [Publisher Full Text](#)
- Zubatiuk TA, Shishkin OV, Gorb L, *et al.*: **B-DNA characteristics are preserved in double stranded d(A)3-d(T)3 and d(G)3-d(C)3 mini-helices: conclusions from DFT/M06-2X study.** *Phys Chem Chem Phys.* 2013; **15**(41): 18155–66.
[PubMed Abstract](#) | [Publisher Full Text](#)
- Gu J, Wang J, Xie Y, *et al.*: **Structural and electronic property responses to the arsenic/phosphorus exchange in GC-related DNA of the B-form.** *J Comput Chem.* 2012; **33**(8): 817–21.
[PubMed Abstract](#) | [Publisher Full Text](#)
- Gu J, Wang J, Leszczynski J: **Stacking and H-bonding patterns of dGpdC and dGpdCpdG: Performance of the M05-2X and M06-2X Minnesota density functionals for the single strand DNA.** *Chem Phys Lett.* 2011; **512**(1–3): 108–112.
[PubMed Abstract](#) | [Publisher Full Text](#)
- Acosta-Silva C, Branchadell V, Bertran J, *et al.*: **Mutual relationship between stacking and hydrogen bonding in DNA. Theoretical study of guanine-cytosine, guanine-5-methylcytosine, and their dimers.** *J Phys Chem B.* 2010; **114**(31): 10217–27.
[PubMed Abstract](#) | [Publisher Full Text](#)
- Yusufaly TI, Li Y, Olson WK: **5-Methylation of cytosine in CG:CG base-pair steps: a physicochemical mechanism for the epigenetic control of DNA nanomechanics.** *J Phys Chem B.* 2013; **117**(51): 16436–42.
[PubMed Abstract](#) | [Publisher Full Text](#) | [Free Full Text](#)
- Carvalho AT, Gouveia L, Kanna CR, *et al.*: **Understanding the structural and dynamic consequences of DNA epigenetic modifications: Computational insights into cytosine methylation and hydroxymethylation.** *Epigenetics.* 2014; **9**(12): 1604–12.
[PubMed Abstract](#) | [Publisher Full Text](#)
- Frisch MJ, Trucks GW, Schlegel HB, *et al.*: **Gaussian Rev. C.01,** Gaussian, Inc.: Wallingford, CT, USA, 2009.
- Lu XJ, Olson WK: **3DNA: A software package for the analysis, rebuilding and visualization of three-dimensional nucleic acid structures.** *Nucleic Acids Res.* 2003; **31**(17): 5108–21.
[PubMed Abstract](#) | [Publisher Full Text](#) | [Free Full Text](#)
- Lu XJ, Olson WK: **3DNA: a versatile, integrated software system for the analysis, rebuilding and visualization of three-dimensional nucleic-acid structures.** *Nat Protoc.* 2008; **3**(7): 1213–27.
[PubMed Abstract](#) | [Publisher Full Text](#) | [Free Full Text](#)
- Drew HR, Wing RM, Takano T, *et al.*: **Structure of a B-DNA dodecamer: conformation and dynamics.** *Proc Natl Acad Sci U S A.* 1981; **78**(4): 2179–2183.
[PubMed Abstract](#) | [Publisher Full Text](#) | [Free Full Text](#)
- Grimme S: **Semiempirical GGA-type density functional constructed with a long-range dispersion correction.** *J Comput Chem.* 2006; **27**(15): 1787–99.
[PubMed Abstract](#) | [Publisher Full Text](#)
- Goerigk L, Grimme S: **A thorough benchmark of density functional methods for general main group thermochemistry, kinetics, and noncovalent interactions.** *Phys Chem Chem Phys.* 2011; **13**(14): 6670–88.
[PubMed Abstract](#) | [Publisher Full Text](#)
- Miertuš S, Scrocco E, Tomasi J: **Electrostatic interaction of a solute with a continuum. A direct utilization of *ab initio* molecular potentials for the prevision of solvent effects.** *Chemical Physics.* 1981; **55**(1): 117–129.
[PubMed Abstract](#) | [Publisher Full Text](#)
- Boys SF, Bernardi F: **The calculation of small molecular interactions by the differences of separate total energies. Some procedures with reduced errors.** *Mol Phys.* 1970; **19**(4): 553–566.
[PubMed Abstract](#) | [Publisher Full Text](#)
- Bakowies D, Thiel W: **Hybrid models for combined quantum mechanical and molecular mechanical approaches.** *J Phys Chem.* 1996; **100**(25): 10580–10594.
[PubMed Abstract](#) | [Publisher Full Text](#)
- Cornell WD, Cieplak P, Bayly CI, *et al.*: **A second generation force field for the simulation of proteins, nucleic acids, and organic molecules.** *J Am Chem Soc.* 1995; **117**(19): 5179–5197.
[PubMed Abstract](#) | [Publisher Full Text](#)
- Cerón-Carrasco JP, Requena A, Jacquemin D: **Impact of DFT functionals on the predicted magnesium–DNA interaction: an ONIOM study.** *Theor Chem Acc.* 2012; **131**: 1188.
[PubMed Abstract](#) | [Publisher Full Text](#)
- Sundaresan N, Pillai CK, Suresh CH: **Role of Mg²⁺ and Ca²⁺ in DNA bending: Evidence from an ONIOM-based QM-MM study of a DNA fragment.** *J Phys Chem A.* 2006; **110**(28): 8826–31.
[PubMed Abstract](#) | [Publisher Full Text](#)
- Ahmadi F, Jahangard-Yekta S, Heidari-Moghadam A, *et al.*: **Application of two-layer ONIOM for studying the interaction of N-substituted piperazinyfluoroquinolones with ds-DNA.** *Comp Theor Chem.* 2013; **1006**: 9–18.
[PubMed Abstract](#) | [Publisher Full Text](#)
- Pronk S, Páll S, Schulz R, *et al.*: **GROMACS 4.5: A high-throughput and highly parallel open source molecular simulation toolkit.** *Bioinformatics.* 2013; **29**(7): 845–854.
[PubMed Abstract](#) | [Publisher Full Text](#) | [Free Full Text](#)
- Pérez A, Marchán I, Svozil D, *et al.*: **Refinement of the AMBER force field for nucleic acids: Improving the description of *all* conformers.** *Biophys J.* 2007; **92**(11): 3817–3829.
[PubMed Abstract](#) | [Publisher Full Text](#) | [Free Full Text](#)
- Jorgensen WL, Chandrasekhar J, Madura JD, *et al.*: **Comparison of simple potential functions for simulating liquid water.** *J Chem Phys.* 1983; **79**(2): 926–935.
[PubMed Abstract](#) | [Publisher Full Text](#)
- Fonseca Guerra C, Bickelhaupt FM, Snijders JP, *et al.*: **The nature of the hydrogen bond in DNA base pairs: The role of charge transfer and resonance assistance.** *Chem Eur J.* 1999; **5**(12): 3581.
[PubMed Abstract](#) | [Publisher Full Text](#)
- Fonseca Guerra C, van der Wijst T, Bickelhaupt FM: **Supramolecular switches based on the guanine-cytosine (GC) Watson-Crick pair: effect of neutral and ionic substituents.** *Chem Eur J.* 2006; **12**(11): 3032–42.
[PubMed Abstract](#) | [Publisher Full Text](#)
- Fonseca Guerra C, Szekecs Z, Bickelhaupt FM: **Remote communication in a**

- DNA-based nanoswitch.** *Chem Eur J.* 2011; **17**(37): 8816–8818.
[Publisher Full Text](#)
39. Olson WK, Bansal M, Burley SK, *et al.*: **A standard reference frame for the description of nucleic acid base-pair geometry.** *J Mol Biol.* 2001; **313**: 229–237.
[Publisher Full Text](#)
40. Olson WK, Gorin AA, Lu XJ, *et al.*: **DNA sequence-dependent deformability deduced from protein-DNA crystal complexes.** *Proc Natl Acad Sci U S A.* 1998; **95**(19): 11163–8.
[PubMed Abstract](#) | [Publisher Full Text](#) | [Free Full Text](#)
41. Dixit SB, Beveridge DL, Case DA, *et al.*: **Molecular dynamics simulations of the**
136 unique tetranucleotide sequences of DNA oligonucleotides. II: Sequence context effects on the dynamical structures of the 10 unique dinucleotide steps. *Biophys J.* 2005; **89**(6): 3721–40.
[PubMed Abstract](#) | [Publisher Full Text](#) | [Free Full Text](#)
42. Renčičuk D, Kejnovská I, Školáková P, *et al.*: **Arrangements of human telomere DNA quadruplex in physiologically relevant K⁺ solutions.** *Nucleic Acids Res.* 2014; **37**(19): 6625–6634.
[Publisher Full Text](#)
43. Kamerlin SCL, Platts J, Carvalho ATP: **Data of theoretical modelling of epigenetically modified DNA sequences.** *Figshare.* 2014.
[Data Source](#)

Open Peer Review

Current Referee Status:



Version 2

Referee Report 16 September 2015

doi:10.5256/f1000research.6909.r8570



Katja Petzold

Department of Medical Biochemistry and Biophysics (MBB-Molecular Structural Biology), Karolinska Institute, Stockholm, Sweden

Thank you for the detailed answers and adjustment.

I have read this submission. I believe that I have an appropriate level of expertise to confirm that it is of an acceptable scientific standard.

Competing Interests: No competing interests were disclosed.

Version 1

Referee Report 17 April 2015

doi:10.5256/f1000research.6589.r8191



Katja Petzold

Department of Medical Biochemistry and Biophysics (MBB-Molecular Structural Biology), Karolinska Institute, Stockholm, Sweden

This paper presents a study of different simulation methods to investigate different modification of dCMp in base pairs or dsDNA and their influence of the surrounding structure.

1. Disparate statement in the abstract – please modify/clarify: “The same modifications within double-stranded GCG and ACA trimers exhibit rather larger structural effects” versus “but these leave the overall helical shape of DNA essentially intact.” larger changes but DNA shape of helix intact?
 2. Please clarify statement in introduction: “Fascinatingly, such modifications may be heritable despite not affecting DNA sequence, although the mechanism(s) by which this could be achieved are currently unknown.” In respect to enzymes (e.g. DNA methyltransferase) known to transfer methylation from parent to daughter strands?
-

3. Please enhance figures for clarity.

A: Fig 1: numbering of atoms, full name of modifications, example GC WC base pair geometry and info on parameters “role, rise twist etc...”.

B: Fig. 2-5 & 7: please keep coherent direction of sequences e.g. GC/GC (5'-3'/5'-3') in Fig. 2 vs Fig. 4 GC/CG, or coherent naming of modification: Fig. 2 – no indication which nucleotide is modified, Fig. 4: C', Fig. 5: (5-mC), if mis-understood – please clarify.

C: Please give more detail in each of the Figure caption (e.g. construct, reference structure – Fig. 7).

D: Fig. 7: what is the reference “along with experimental values for methylated C” – are the values shown here the X-ray structure values or the X-ray Structure values optimized with QM/MM for the WT? – if it is the optimized data, than I suggest to add the experimental data uncorrected as well.

4. It is difficult to estimate the significance of the changes in structural parameters between different cytosine modifications or different simulation methods, as there are no errors/standard deviations are presented. I would suggest using a set of X-ray/NMR structures with the same sequence and/or modifications to create a standard deviation for the different parameters to give the analysis more significance (than I can estimate if a difference of 0.03Å is of importance or not: “Formyl has a larger effect overall, lengthening N3...H1-N1 and O2...H2-N2 H-bonds and hence reducing binding by over 3 kcal/mol.” Difference in h-bond length from wtC is 0.025Å and 0.049Å, respectively – seems very small, but if all GC wc bp are within of 0.01Å distance, this would be significant).

Important for: Table 1&2 – as well important for Fig. 2-5 & 7, please adjust.

5. Describe structural/distortion findings in structure/sketches. E.g.: “largely due to a strong H-bond between the H—O of hydroxymethyl and O6 of guanine (H...O = 1.770 Å)” for a better understanding of how the structures are supposed to look like.

6. Formality: p5 first sentence “Following Zubatiuk *et al.*37,” should be “Following **Olson** *et al.*37,” OR “Following Zubatiuk *et al.*14,”

7. More information on the Methods and Materials would be appreciated: E.g. How extensive where the simulations/optimizations? What were the energy cutoffs?...

I have read this submission. I believe that I have an appropriate level of expertise to confirm that it is of an acceptable scientific standard, however I have significant reservations, as outlined above.

Competing Interests: No competing interests were disclosed.

Author Response (Member of the F1000 Faculty and F1000Research Advisory Board Member) 23 Apr 2015

Lynn Kamerlin, Department of Cell and Molecular Biology, Uppsala University, Sweden

We thank the referee for the time taken to review our manuscript. Please find a point-by-point response below, with our responses italicised.

1. Disparate statement in the abstract – please modify/clarify: “The same modifications within double-stranded GCG and ACA trimers exhibit rather larger structural effects” versus “but these leave the overall helical shape of DNA essentially intact.” larger changes but DNA shape of helix intact?

We do not see these statements as contradictory: we show that there are indeed substantial changes in H-bonding and stacking interactions, but that these are not sufficient to disrupt the overall helical structure. We have, however, now explicitly included this in the abstract to prevent reader confusion.

2. Please clarify statement in introduction: “Fascinatingly, such modifications may be heritable despite not affecting DNA sequence, although the mechanism(s) by which this could be achieved are currently unknown.” In respect to enzymes (e.g. DNA methyltransferase) known to transfer methylation from parent to daughter strands?

This is certainly one key mechanism, but this is not the place to discuss in detail the biology of epigenetics, which is covered at length in references cited. We have made this point more explicit in the introduction and refer the reader to reference 1 for further information about currently proposed mechanisms.

3. Please enhance figures for clarity.

The figures have been modified as outlined below and we hope the improved version is now clearer to the reader.

A: Fig 1: numbering of atoms, full name of modifications, example GC WC base pair geometry and info on parameters “role, rise twist etc...”.

Numbering has been added to Figure 1, as has a representation of CG base pair. Roll, rise, twist etc. are widely used in DNA studies and should not need re-definition here.

B: Fig. 2-5 & 7: please keep coherent direction of sequences e.g. GC/GC (5'-3'/5'-3') in Fig. 2 vs Fig. 4 GC/CG, or coherent naming of modification: Fig. 2 – no indication which nucleotide is modified, Fig. 4: C', Fig. 5: (5-mC), if mis-understood – please clarify.

The legend for figures 2 to 4 has been altered to explain that central C has been modified.

C: Please give more detail in each of the Figure caption (e.g. construct, reference structure – Fig. 7).

Legend for Figure 7 has been expanded to clarify source of data.

D: Fig. 7: what is the reference “along with experimental values for methylated C” – are the values shown here the X-ray structure values or the X-ray Structure values optimized with QM/MM for the WT? – if it is the optimized data, than I suggest to add the experimental data uncorrected as well.

This was an oversight from a previous draft: Figure 7 does not contain experimental data, and this has been removed from the manuscript. Inclusion of further data from experiment

would make this figure too cluttered and difficult to read.

4. It is difficult to estimate the significance of the changes in structural parameters between different cytosine modifications or different simulation methods, as there are no errors/standard deviations are presented. I would suggest using a set of X-ray/NMR structures with the same sequence and/or modifications to create a standard deviation for the different parameters to give the analysis more significance (than I can estimate if a difference of 0.03Å is of importance or not: “Formyl has a larger effect overall, lengthening N3...H1-N1 and O2...H2-N2 H-bonds and hence reducing binding by over 3 kcal/mol.” Difference in h-bond length from wtC is 0.025Å and 0.049Å, respectively – seems very small, but if all GC wc bp are within of 0.01Å distance, this would be significant).

It is indeed difficult to estimate the significance of changes in geometry: these static DFT and QM/MM calculations do not yield standard deviations. It would indeed be interesting to extract experimental information to estimate variability across structures, but this would be a whole new project, and is therefore out of the scope of the present work.

Important for: Table 1&2 – as well important for Fig. 2-5 & 7, please adjust.

As outlined above, we do not have suitable data with which to adjust these tables and figures.

5. Describe structural/distortion findings in structure/sketches. E.g.: “largely due to a strong H-bond between the H—O of hydroxymethyl and O6 of guanine (H...O = 1.770 Å)” for a better understanding of how the structures are supposed to look like.

We have added a figure for this structure to supporting information, and stress that all optimised coordinates have been deposited should readers wish to assess further detail.

6. Formality: p5 first sentence “Following Zubatiuk *et al.*37,” should be “Following **Olson** *et al.*37,” OR “Following Zubatiuk *et al.*14,”

*We thank the referee for spotting this error, and have corrected it to Following Zubatiuk *et al.*14,”*

7. More information on the Methods and Materials would be appreciated: E.g. How extensive where the simulations/optimizations? What were the energy cutoffs?...

All DFT and QM/MM calculations used Gaussian09 default convergence criteria for SCF calculation and geometry optimisation: a statement to this effect has been added to the methods section. Details of MM calculations are identical to those from our previous work (ref 19): again, a statement has been added to this effect.

Competing Interests: No competing interests.

doi:10.5256/f1000research.6589.r7803



Célia Fonseca Guerra

Department of Theoretical Chemistry and Amsterdam Center for Multiscale Modeling, VU University Amsterdam, Amsterdam, Netherlands

This paper presents an interesting theoretical study on epigenetically modified DNA.

Legend of Figure 1: Please include the numbering, so that non-experts can follow the rest of the text.

Page 4: "The presence of a hydroxymethyl slightly weakens the N4-H4...O6" Is there an internal hydrogen bond that is competing with the N4-H4...O6 hydrogen bond? Please explain.

Page 4 "Formyl has a larger effect overall, lengthening N3...H1-N1 and O2...H2-N2 H-bonds and hence reducing binding by over 3 kcal/mol." This can easily be understood because N3 and O2 become less negative due to the electron withdrawing effect. See *Chem. Eur. J.* **2006**, *12*: 3032-3042, *Chem. Eur. J.* **1999**, *5*: 3581-3594 and *Chem. Eur. J.* **2011**, *17*: 8816-8818 and use these publications to explain these effects on the hydrogen bonds. The epigenetic modifications can be considered to be substituent effects and therefore the changes in the hydrogen bonds can be easily explained.

Table 1: What are the hydrogen bonds lengths meant here? N4...O6 or H4...O6. The preference would be N4...O6.

I have read this submission. I believe that I have an appropriate level of expertise to confirm that it is of an acceptable scientific standard.

Competing Interests: No competing interests were disclosed.

Author Response (Member of the F1000 Faculty and F1000Research Advisory Board Member) 23 Apr 2015

Lynn Kamerlin, Department of Cell and Molecular Biology, Uppsala University, Sweden

We again thank the reviewer for the time taken to referee the manuscript. Please see our point-by-point response below.

- Legend of Figure 1: Please include the numbering, so that non-experts can follow the rest of the text.

Numbering has been added to Figure 1.

- Page 4: "The presence of a hydroxymethyl slightly weakens the N4-H4...O6" Is there an internal hydrogen bond that is competing with the N4-H4...O6 hydrogen bond? Please explain.

The OH group of hydroxymethyl is found to lie close to H4, but the lengths reported in Table 1 put this "contact" outside typical ranges of N-H...O hydrogen bonds, such that we prefer not to refer to a hydrogen bond, but rather the proximity of groups.

- Page 4 "Formyl has a larger effect overall, lengthening N3...H1-N1 and O2...H2-N2 H-bonds and hence reducing binding by over 3 kcal/mol." This can easily be understood because N3

and O2 become less negative due to the electron withdrawing effect. See [Chem. Eur. J. 2006, 12: 3032-3042](#), [Chem. Eur. J. 1999, 5: 3581-3594](#) and [Chem. Eur. J. 2011, 17: 8816-8818](#) and use these publications to explain these effects on the hydrogen bonds. The epigenetic modifications can be considered to be substituent effects and therefore the changes in the hydrogen bonds can be easily explained.

We completely agree that these trends can be understood as substituent effects, and have therefore added both text to reflect this and the suggested references to the relevant section of the Results and Discussion.

- Table 1: What are the hydrogen bonds lengths meant here? N4•••O6 or H4•••O6. The preference would be N4•••O6.

H-bond lengths are reported as H...Y, since the alternative depends on angular geometry of the X-H...Y system. In any case, full coordinates have been deposited as Supporting Information in case interested parties wish to extract X...Y distances.

Competing Interests: No competing interests.