

NEDD8 Ultimate Buster 1 Long (NUB1L) Protein Suppresses Atypical Neddylation and Promotes the Proteasomal Degradation of Misfolded Proteins*

Received for publication, May 15, 2015, and in revised form, July 27, 2015. Published, JBC Papers in Press, August 10, 2015, DOI 10.1074/jbc.M115.664375

Jie Li[‡], Wenxia Ma[‡], Huizhong Li[‡], Ning Hou[§], Xuejun Wang[¶], Il-man Kim[‡], Faqian Li[§], and Huabo Su^{¶||1}

From the [‡]Vascular Biology Center and ^{||}Department of Pharmacology and Toxicology, Medical College of Georgia, Georgia Regents University, Augusta, Georgia 30912, the [§]Department of Pathology and Laboratory Medicine, University of Rochester Medical Center, Rochester, New York 14642, and the [¶]Division of Basic Biomedical Sciences, Sanford School of Medicine, University of South Dakota, Vermillion, South Dakota 57069

Background: NEDD8 conjugates are increased in cells with proteasome function impairment, and neddylation of ubiquitinated proteins on the ubiquitin chain requires ubiquitin- but not NEDD8-activating enzyme.

Results: NEDD8 ultimate buster 1 long (NUB1L) suppresses atypical neddylation and promotes the degradation of misfolded proteins.

Conclusion: NUB1L is an important regulator of protein quality control.

Significance: Selective targeting of atypical neddylation is a novel strategy to enhance protein quality control.

Neddylation is a posttranslational modification that controls diverse biological processes by covalently conjugating the ubiquitin-like protein NEDD8 to specific targets. Neddylation is commonly mediated by NEDD8-specific enzymes (typical neddylation) and, sometimes, by ubiquitin enzymes (atypical neddylation). Although typical neddylation is known to regulate protein function in many ways, the regulatory mechanisms and biological consequence of atypical neddylation remain largely unexplored. Here we report that NEDD8 conjugates were accumulated in the diseased hearts from mouse models and human patients. Proteotoxic stresses induced typical and atypical neddylation in cardiomyocytes. Loss of NUB1L exaggerated atypical neddylation, whereas NUB1L overexpression repressed atypical neddylation through promoting the degradation of NEDD8. Activation of atypical neddylation accumulated a surrogate misfolded protein, GFPu. In contrast, suppression of atypical neddylation by NUB1L overexpression enhanced GFPu degradation. Moreover, NUB1L depletion accumulated a cardiomyopathy-linked misfolded protein, CryAB^{R120G}, whereas NUB1L overexpression promoted its degradation through suppressing neddylation of ubiquitinated proteins in cardiomyocytes. Consequently, NUB1L protected cells from proteotoxic stress-induced cell injury. In summary, these data indicate that NUB1L suppresses atypical neddylation and promotes the degradation of misfolded proteins by the proteasome. Our findings also suggest that induction of NUB1L could potentially become a novel therapeutic strategy for diseases with increased proteotoxic stress.

Protein posttranslational modification by ubiquitin (Ub)² and ubiquitin-like proteins is an important mechanism regulating the function of eukaryotic proteins. Since the discovery of ubiquitin in the 1970s, a dozen ubiquitin-like proteins have been identified that modify protein substrates in a manner similar to ubiquitination (1, 2). Among all ubiquitin-like proteins, neural precursor cell expressed, developmentally down-regulated 8 (NEDD8) shares the highest (80%) homology with Ub and is evolutionarily conserved among most species (3). Similar to Ub, NEDD8 is covalently attached to target proteins by forming an isopeptide bond between the C-terminal glycine of NEDD8 and the ϵ -amino group of lysine residues on the recipient substrate. Typical neddylation requires the NEDD8-specific heterodimeric E1-activating enzyme (NAE), the E2 conjugation enzyme (Ubc12), and a still largely unknown set of E3 ligases. The conjugated NEDD8 can be cleaved off the substrates by deneddylases such as the COP9 signalosome (CSN) and NEDD8 protease 1 (NEDP1) in a process known as deneddylation (4, 5). Unlike ubiquitination, neddylation does not signal modified proteins to the proteasome for degradation but, instead, alters the conformation (6), stability (7), intracellular compartmentalization (8), and binding affinity of the substrate to DNA and protein partners (9, 10). Consequently, by modulating the cellular functions of the substrates, neddylation influences diverse cellular processes, including ubiquitination, cell proliferation, DNA damage response, transcriptional regulation, signaling transduction, and others (4, 11). Not surprisingly, dysregulation of neddylation has been linked to developmental defects (12), cancer (13), heart failure (14, 15), and synaptic dysfunction (16).

* This work was supported, in whole or in part, by National Institutes of Health Grants R01HL124248 (to H. S.), R01HL124251 (to I. K.), R01HL085629 and R01HL072166 (to X. W.), and R01HL111480 (to F. L.). This work was also supported by American Heart Association Grants 11SDG6960011 (to H. S.) and 14SDG18970040 (to I. K.). The authors declare that they have no conflicts of interest with the contents of this article.

¹ To whom correspondence should be addressed: Vascular Biology Center, Medical College of Georgia, Georgia Regents University, 1459 Laney Walker Blvd., Augusta, GA 30912. Tel.: 706-721-9152; Fax: 706-721-9799; E-mail: HSU@gru.edu.

² The abbreviations used are: Ub, ubiquitin; NAE, NEDD8-specific heterodimeric E1-activating enzyme; CSN, COP9 signalosome; Tg, transgenic; RFP, red fluorescent protein; MEF, mouse embryonic fibroblast; NRVM, Neonatal rat ventricular myocyte; MOI, multiplicity of infection; Ad, adenovirus(es); sl, simulated ischemia; CHX, cycloheximide; TUBE, tandem ubiquitin-binding entity; UPS, ubiquitin-proteasome system; BZM, bortezomib.

Cullin family proteins are the best characterized NEDD8 substrates. However, an increasing number of cellular proteins have been identified recently as NEDD8 targets (11). Interestingly, recent reports indicate that, under various stress conditions, NEDD8 incorporates into the existing Ub chain, leading to mixed ubiquitin- and NEDD8-modified conjugates (17). Such neddylation requires a ubiquitin-conjugation system, such as the ubiquitin-activating enzyme UBE1, but not the canonical NAE. Therefore, this process has been termed atypical neddylation (17, 18). It remains unclear how atypical neddylation is controlled or what its functional consequence is in cells.

The interferon-inducible protein NEDD8 ultimate buster 1 long (NUB1L) has been proposed as a negative regulator of neddylation (19). It possesses a ubiquitin-like domain and three ubiquitin-associating domains. NUB1L specifically binds to NEDD8 and promotes the transfer of NEDD8 to the proteasome for degradation by cooperating with the p97UFD1-NPL4 complex (20). NUB1L overexpression has been shown previously to reduce neddylated proteins in non-cardiac cells (19). Moreover, NUB1L controls the degradation of synphilin 1, tau, and mutant Huntingtin (21–23), suggesting that NUB1L may play a role in certain neurodegenerative diseases.

Although neddylation does not lead to the proteasomal degradation of NEDD8-modified substrates, accumulating evidence suggests a cross-talk between NEDD8 and ubiquitin-mediated proteolysis. In support of this, typical neddylation of cullin-based or non-cullin Ub ligases controls their activities and the degradation of their substrates (6, 10). Furthermore, neddylation of cellular proteins can actually antagonize their ubiquitination and increase their stability (7, 24). So far, whether atypical neddylation, particularly neddylation of ubiquitinated proteins, influences ubiquitin-mediated proteolysis has not been explored in any cell type, including cardiomyocytes. Here we report that proteotoxic stress activates atypical neddylation in cardiomyocytes, which, in turn, impairs global proteasomal proteolysis. We further demonstrate that NUB1L suppresses atypical neddylation and promotes the proteasomal degradation of a misfolded protein that causes cardiomyopathy, thereby conferring protection to cardiomyocytes against proteotoxic stress. Our studies reveal a previously unrecognized cross-talk between ubiquitin and the NEDD8 pathway. Given that proteotoxicity has been identified as a pathogenic factor in many cardiac disorders, selectively targeting atypical neddylation could be a novel therapeutic strategy to combat cardiac pathogenesis involving prevalent proteotoxic stress.

Experimental Procedures

Animal Models—Transgenic (Tg) mouse models expressing a missense mutant (arginine 120 to glycine) of α B-crystallin (CryAB^{R120G}) or a seven-amino acid deletion mutant of desmin (D7-des) have been described previously (25, 26). These mice were maintained in the FVB/N inbred background for our studies. All animal experiments were approved by the Georgia Regents University Institutional Animal Care and Use Committee.

Human Samples—Formalin-fixed and paraffin-embedded human heart tissue blocks from 10 patients with end-stage

heart failure and five non-failing controls (without a history of cardiovascular disorders) were retrieved from the archive of the Department of Pathology and Laboratory Medicine at the University of Rochester Medical Center. The protocol for the use of human heart samples was reviewed and exempted by the Institutional Review Board at the University of Rochester Medical Center.

Cell Culture and Plasmid Transfection—The HEK293 cell line stably expressing a degron signal CL1-fused green fluorescent protein (GFPu) and red fluorescent protein (RFP) was created as described previously (27). Mouse embryonic fibroblasts (MEFs) were isolated from NUB1L knockout or littermate wild-type embryos at embryonic day 14.5 as described previously (28). The primary cultured MEFs were used within five passages. HEK293 and MEFs were maintained in DMEM with 10% FBS. pShuttle-CMV-SF-NEDD8 (Strep- and FLAG-tagged NEDD8) or pShuttle-CMV-SF-NEDD8 Δ GG (a conjugation-deficient mutant because of the deletion of the last two glycine residues) was transfected into the cells using X-tremeGene HP DNA transfection reagent (Roche) according to the protocol of the manufacturer. Cells were harvested for analysis 48 h after transfection.

Cardiomyocyte Isolation, Adenovirus Infection, and siRNA Transfection—Neonatal rat ventricular myocytes (NRVMs) were isolated using the neonatal cardiomyocyte isolation system (Worthington) following the protocol of the manufacturer (29).

Adenoviruses expressing SF-NEDD8 (Ad-SF-NEDD8) or FLAG-tagged NUB1L (Ad-NUB1L) were created using the AdEasy adenoviral vector system (Stratagene). Adenoviruses expressing GFPu (Ad-GFPu), RFP (Ad-RFP), HA-tagged wild-type CryAB (Ad-CryAB), or HA-tagged CryAB^{R120G} (Ad-HA-CryAB^{R120G}) were used. Infection of NRVMs was generally performed 24–48 h after plating in serum-free DMEM for 3 h. The adenovirus-containing medium were replaced with fresh medium containing 2% serum. Ad-NUB1L was applied to NRVMs at a multiplicity of infection (MOI) of 20 unless specified otherwise. Control cells were infected with Ad expressing β -galactosidase (Ad- β -gal) at a comparable MOI.

All gene knockdown assays were performed using siRNA (Qiagen) as described previously (29). The siRNAs used for NUB1L were 5'-CCGAAACGATGCCTTACTTA-3' and 5'-TCCGAGGCTCCGAAAGATAA-3'. siRNA against luciferase (5'-AACGTACGCGGAATACTTTCGA-3') was used as a negative control in all knockdown experiments. Briefly, NRVMs were transfected with siRNA (100 pmol/2 \times 10⁶ cells) using Lipofectamine 2000 (Life Technologies) following the protocol of the manufacturer 24–48 h after plating. Six hours after transfection, the siRNA-containing medium was replaced with fresh medium containing 2% FBS. A second round of siRNA transfection was performed 3 days after the first transfection to achieve a sustained silencing effect.

Simulated Ischemia (sI) and sI/Reperfusion—Simulated ischemia or ischemia reperfusion was achieved using a modified Krebs buffer/anaerobic environment protocol as described previously (30). Briefly, NRVMs were incubated with ischemic buffer containing 1.3 mM CaCl₂, 5 mM KCl, 0.3 mM KH₂PO₄, 0.5 mM MgCl₂, 0.4 mM MgSO₄, 128 mM NaCl, 4 mM NaHCO₃, and

NUB1L in Atypical Neddylation and Proteolysis

10 mM HEPES (pH 6.8) and placed in a chamber mimicking hypoxic conditions (95% N₂ and 5% CO₂) for 12 h. Following ischemia, the cells were reoxygenated (perfused) for another 12 h in DMEM with 2% serum under normal culture conditions.

Protein Extraction, Western Blot Analysis, and Protein Dot Blot Analysis—Protein extraction from ventricular myocardium tissues or cultured cells, protein concentration determination with BCA reagents (Pierce), SDS-PAGE, immunoblotting, and densitometry were performed as described previously (14).

The soluble and insoluble fractions of cell lysates were prepared as described previously (29). Briefly, cultured cardiomyocytes were lysed in cold PBS (pH 7.4) containing 1% Triton X-100, 2.5 mM EDTA, and complete protease inhibitor mixture on ice for 30 min and vortexed for 30 s every 10 min. The cell extracts were centrifuged at 12,000 × *g* for 15 min, and the supernatants were collected as soluble fractions. The pellets were dissolved in 1 × SDS sample buffer (50 mM Tris-HCl (pH 6.8) containing 2% SDS, 10% glycerol, and complete protease inhibitor mixture), sonicated on ice, boiled for 5 min, and centrifuged at 10,000 × *g* for 10 min at 4 °C. The supernatants were collected as insoluble fractions.

For the protein dot blot, equal amounts of soluble or insoluble protein fractions were loaded onto a PVDF membrane using a Bio-Dot apparatus (Bio-Rad). The membrane was then rinsed with cold PBS and subjected to Western blot analysis.

RNA Preparation and Real-time PCR—Isolation of total RNA and reverse transcription into single-stranded cDNA was performed as described previously (29). Gene expression levels were measured in duplicate per sample by real-time PCR (StepOnePlus real-time PCR system, Life Technologies) using the SYBR Green assay with gene-specific primers at a final concentration of 200 nM. The following primers were used: GFPu forward, GGGCACAAGCTGGAGTACAAC; GFPu reverse, ATGTTGTGGCGGATCTTGAAG; HA-CryAB^{R120G} forward, TTCTTCGGAGAGCACCTGTT; and HA-CryAB^{R120G} reverse, CCCAGAACCTTGACTTTGA. Relative gene expression was calculated using the 2^{-ΔΔct} method against rat housekeeping gene acidic ribosomal phosphoprotein P0 (RPLP0). Each experiment was repeated at least three times independently.

Proteasomal Peptidase Activity Assay—This was performed as described previously with minor modifications (31). Briefly, cultured NRVMs were lysed on ice in cytosolic extraction buffer (50 mM Tris-HCl (pH 7.5), 250 mM sucrose, 5 mM MgCl₂, 0.5 mM EDTA, and 1 mM DTT). Protein concentrations were determined with BCA reagents (Pierce) and diluted to equal concentration in proteasome assay buffer (50 mM Tris-HCl (pH 7.5), 40 mM KCl, 5 mM MgCl₂, and 1 mM DTT). Peptidase activities were determined in the presence of ATP for chymotrypsin-like (28 μM) and caspase-like activity (14 μM). The synthetic fluorogenic substrates Suc-LLVY-AMC (18 μM, Enzo Life Sciences) and Suc-LLE-AMC (45 μM, Millipore) were used for measuring chymotrypsin-like and caspase-like activities, respectively. Peptide cleavage reactions were carried out in the absence or presence of the proteasome inhibitor MG-132 (Enzo Life Sciences). The portion of activities that was inhibited by

MG132 was considered to be the proteasome activity. The fluorescence was read in a Bio-Tek Synergy H4 plate reader at an excitation wavelength of 380 nm and an emission wavelength of 460 nm.

Cycloheximide (CHX) Chase Assay—NRVMs subject to various experimental treatments were incubated in serum-free DMEM containing CHX (100 μM, Sigma) to suppress protein synthesis. The cells were collected at different consecutive time points after CHX administration, and whole-cell lysates were analyzed by Western blot for the protein of interest.

Immunohistochemistry Microscopy—For immunohistochemical staining of NEDD8, 4-μm sections were deparaffinized and rehydrated. To recover antigen, these sections were incubated in preheated sodium citrate buffer (pH 6.0, 99 °C) for 20 min with the PT Link system (Dako). Endogenous peroxidase activity was blocked with 3% H₂O₂. After preincubation with 10% non-immune goat serum (Invitrogen) to prevent nonspecific binding, tissue sections were incubated with rabbit anti-NEDD8 antibody (1:400, Cell Signal Technology) at 4 °C overnight. The signal was amplified with the Histostain-SP kit (Life Technologies) and detected with 3,3'-diaminobenzidine tetrahydrochloride substrate (Dako). Special attention was paid to avoid color overdevelopment. Hematoxylin was used as a counterstain. Negative controls were incubated with appropriate non-immune serum instead of primary antibody under the same conditions.

Non-denaturing and Denaturing Immunoprecipitation—NRVMs were lysed in radioimmunoprecipitation assay buffer supplemented with complete protease inhibitor mixture (Roche) and a deubiquitin enzyme inhibitor, PR-619 (30 μM, Lifesensors), followed by centrifugation at 12,000 × *g* for 10 min. The supernatant was then quantified for protein concentration with BCA reagents, and 1 mg of the supernatant, in a total volume of 1 ml, was used for the subsequent immunoprecipitation. The tissue lysates were first precleared by incubation with appropriate IgG for 2 h at 4 °C. The precleared lysates were then incubated with mouse anti-HA antibody-conjugated agarose beads to pull down HA-tagged CryAB^{R120G} or tandem ubiquitin binding entity-conjugated agarose beads (Lifesensors) to pull down polyubiquitinated proteins at 4 °C overnight. Protein A/G-agarose beads (Santa Cruz Biotechnology) along with unconjugated mouse IgG (4 μg of IgG/1 mg of protein, Santa Cruz Biotechnology) or control agarose (Lifesensors) served as immunoprecipitation controls. The immunoprecipitates were finally eluted using 2 × sample loading buffer (160 mM Tris-HCl, 4% SDS, and 20% glycerol), resolved by SDS-PAGE, and subjected to immunoblot analyses.

Lactate Dehydrogenase Activity Assay—Lactate dehydrogenase activity in the collected culture medium was measured using a cytotoxicity detection kit (Roche) and following the instructions of the manufacturer.

Measurement of Cellular ATP Levels—Cell viability was determined by measuring cellular ATP levels using the CellTiter-Glo luminescent cell viability kit (Promega) and following the instructions of the manufacturer. Luminescence was recorded with a Centro XS³ LB 960 microplate luminometer (Berthold).

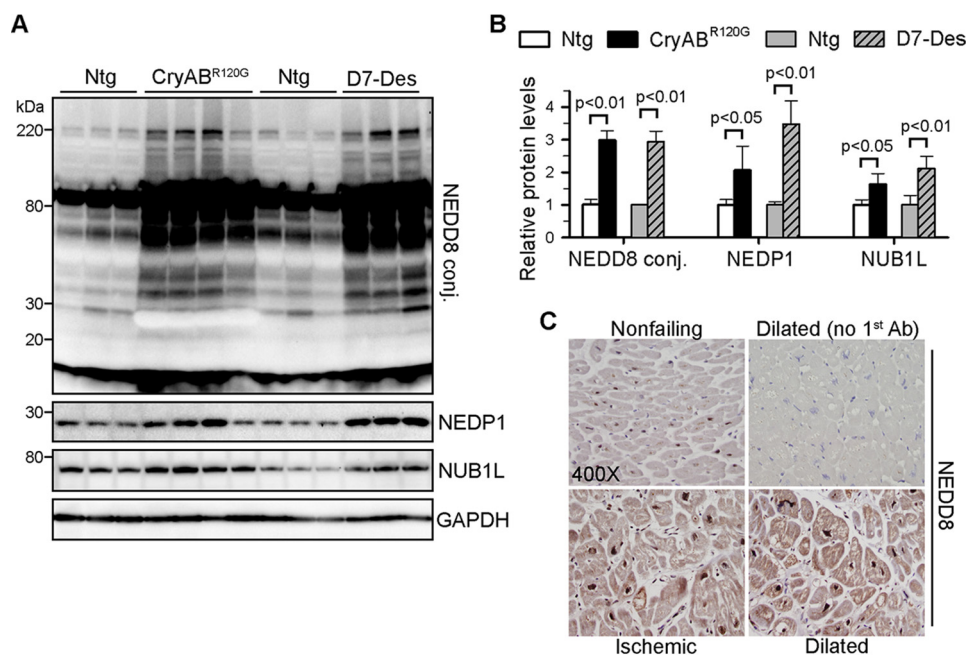


FIGURE 1. **Increased NEDD8 conjugates in diseased hearts.** *A* and *B*, representative Western blots (*A*) of the indicated proteins and densitometric analysis (*B*) of 2-month-old CryAB^{R120G} and D7-Des Tg mouse hearts. *n* = 4–6 for each group. *Conj.*, conjugate. *C*, NEDD8 immunohistochemistry of myocardium sections of explanted failed human hearts with ischemic or dilated cardiomyopathy and nonfailing hearts from donors without cardiovascular disorders. Normal rabbit serum was used as the primary antibody for a negative control. Shown are representative images from five sets of staining.

Statistical Analysis—Results are shown as mean ± S.E. Paired data were evaluated using two-tailed Student’s *t* test. For multiple comparisons, one-way analysis of variance or, when appropriate, two-way analysis of variance, followed by a post hoc test was performed. *p* < 0.05 was considered statistically significant.

Results

Proteotoxic Stress Induces Typical and Atypical Neddylation in Cardiomyocytes—To study the role of neddylation in ubiquitin-mediated proteolysis, we first asked whether neddylation is dysregulated in hearts exposed to proteotoxic stress. It has been established previously that proteotoxic stress is prevalent in Tg mouse hearts overexpressing the misfolded proteins CryAB^{R120G} or D7-des in which these misfolded proteins form protein aggregates in cardiomyocytes (25, 26). In adult CryAB^{R120G} and D7-des Tg mouse hearts, we observed ~3-fold increases of neddylated proteins compared with littermate non-Tg mice. This was accompanied by up-regulation of the negative regulator of neddylation NUB1L and the deneddylase NEDP1 (Fig. 1, *A* and *B*), suggesting that the increase in neddylated proteins likely results from activation of neddylation rather than defective deneddylation. Furthermore, proteotoxic stress is also prevalent in human failing hearts, as evidenced by the accumulation of ubiquitinated proteins and protein aggregates (32, 33). In immunostained myocardium sections of human patients suffering from ischemic or dilated cardiomyopathy, we observed increased NEDD8 immunoreactivity compared with those from control hearts without diagnosed cardiac abnormalities (Fig. 1*C*).

Various stresses induce UBE1-mediated mixed ubiquitin- and NEDD8- protein modification (atypical neddylation) in non-cardiac cells (17, 18). In cultured NRVMs, the proteasome

inhibitor bortezomib dose- and time-dependently increased both low and high molecular weight NEDD8 conjugates (Fig. 2*A*). Similarly, other proteasome inhibitors such as MG132 and MG262 also substantially increased neddylated proteins in NRVMs (Fig. 2*B*). The NAE inhibitor MLN4924 (13) effectively attenuated the increase of NEDD8 conjugates with low molecular weight but not of those with high molecular weight upon proteasome inhibition (Fig. 2*B*), indicating that proteasome inhibition also activates typical neddylation in cardiomyocytes. To determine whether the high molecular weight neddylated proteins are Ub- and NEDD8-mixed modified proteins, we used tandem ubiquitin-binding entities (TUBEs) (34) to pull down polyubiquitinated proteins under denaturing conditions, which excluded non-covalently associated proteins such as p62 (Fig. 2*C*). As expected, we detected a remarkable increase of NEDD8 species with high molecular weight in the precipitates from NRVMs subject to proteasome inhibition, which was not attenuated but, instead, augmented by MLN4924 (Fig. 2*C*), confirming that the neddylation of ubiquitinated proteins does not require NAE. We next exposed NRVMs to si or oxidative stress by H₂O₂ treatment. Each of these stimuli has been reported to elevate proteotoxic stress in cardiac cells (35, 36). We observed dramatically increased levels of high molecular weight neddylated proteins in stressed cardiomyocytes, which, presumably, are ubiquitin- and NEDD8-mixed modified (Fig. 2, *D* and *E*). The NUB1L protein levels were not affected by the tested stresses (Fig. 2, *A*, *B*, *D*, and *E*), suggesting that the increase of neddylated proteins was not due to loss of NUB1L. Together, these data suggest that proteotoxic stress activates typical and atypical neddylation in cardiomyocytes.

NUB1L Suppresses Atypical Neddylation—NUB1L overexpression has been shown to reduce neddylated proteins in non-

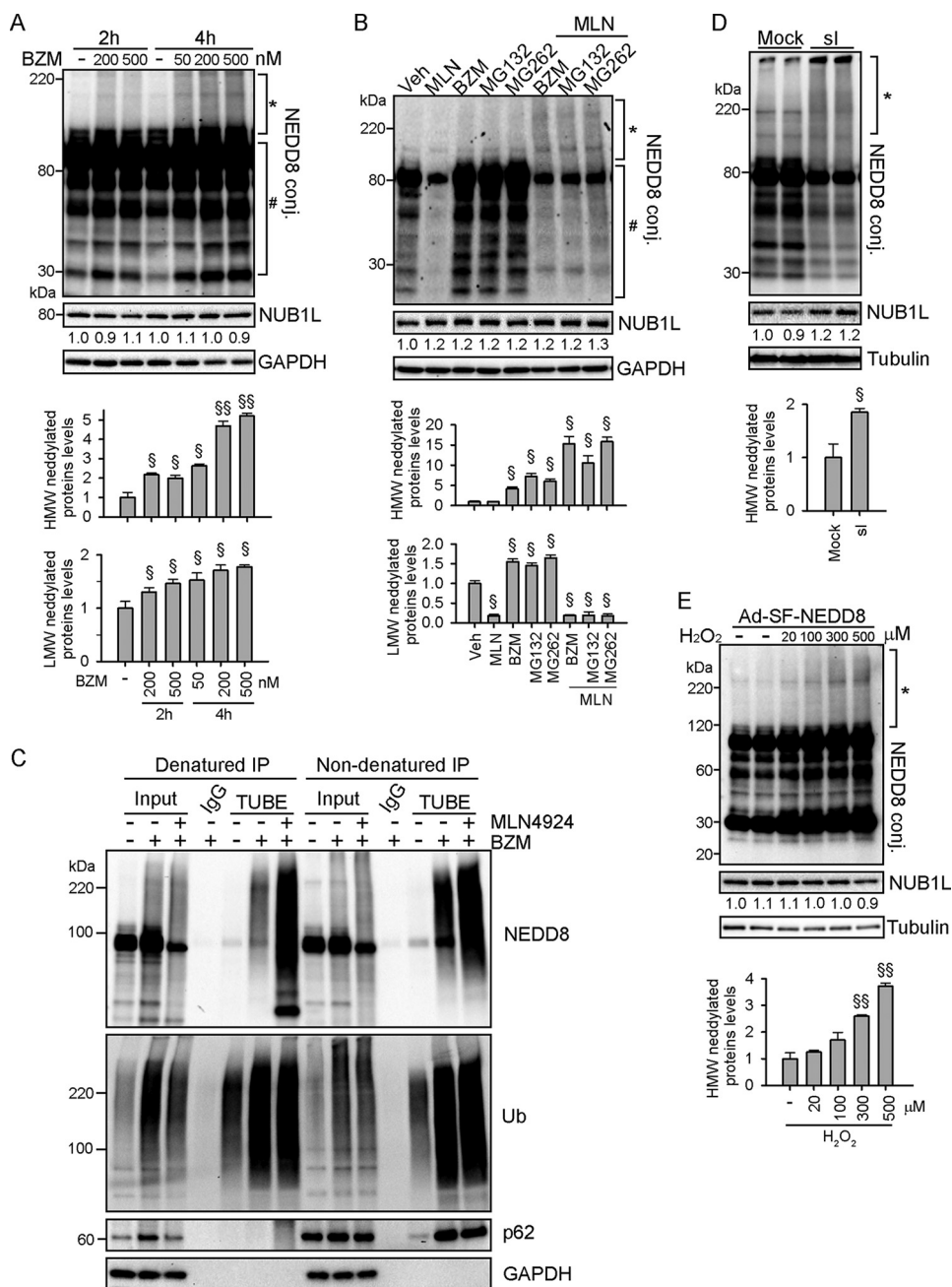


FIGURE 2. Activation of typical and atypical neddylation by multiple stresses in cardiomyocytes. *A*, NRVMs were treated with the proteasome inhibitor bortezomib (BZM) for the indicated times. *HMW*, high molecular weight; *conj.*, conjugate. *B*, NRVMs were treated with the proteasome inhibitors BZM (100 nM), MG132 (5 μ M), and MG262 (1 μ M) for 6 h. The NAE inhibitor MLN4924 (*MLN*) was added 1 h after the administration of proteasome inhibitors. *Veh*, vehicle. *C*, NRMMs were treated with vehicle or BZM (100 nM) in the absence or presence of MLN4924 (1 μ M) for 6 h. Polyubiquitinated proteins were purified from cell extracts using TUBEs under denaturing or non-denaturing conditions and immunoblotted with the indicated antibodies. *D*, NRMMs were subjected to si for 12 h. *E*, NRMMs were infected with Ad-SF-NEDD8 for 24 h and treated with H₂O₂ for another 8 h. *A–E*, Shown are representative Western blots and the densitometric analysis from three independent experiments. The asterisks and # denote high and low molecular weight NEDD8 conjugates respectively.

cardiac cells (19, 20), but it is not known whether endogenous NUB1L controls neddylation in cardiac and other cells. We created NUB1L wild-type and knockout MEFs. Loss of NUB1L did not alter the levels of total neddylated proteins at baseline and upon proteasome inhibition (Fig. 3A). However, by pulling down polyubiquitinated proteins using TUBEs under denaturing conditions, we found a remarkable increase in Ub-NEDD8 mixed modified proteins in NUB1L knockout MEFs treated with bortezomib compared with those in NUB1L wild-type MEFs (Fig. 3A). In cultured cardiomyocytes, NUB1L overex-

pression mildly decreased neddylated proteins at baseline and robustly reduced protein neddylation induced by bortezomib treatment, whereas NUB1L expression had no effect on the levels of ubiquitinated proteins (Fig. 3B). Denatured immunoprecipitation followed by Western blot analysis confirmed that silencing of UBE1, but not MLN4924 treatment, largely reduced bortezomib-induced Ub-NEDD8 mixed modification (Fig. 3C). Although NUB1L overexpression did not alter UBE1 protein levels, it greatly diminished Ub-NEDD8 mixed modification upon bortezomib treatment (Fig. 3C). Reciprocally, ned-

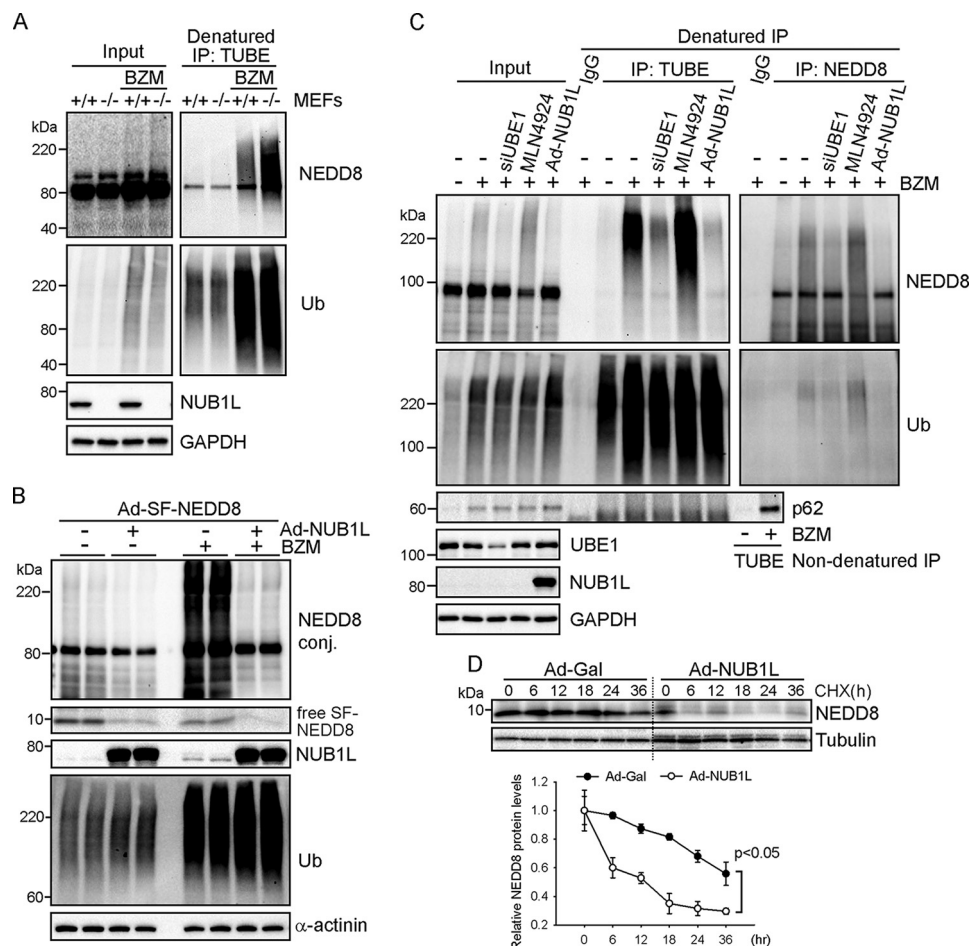


FIGURE 3. NUB1L suppresses neddylation of ubiquitinated proteins. *A*, extracts from NUB1L wild-type (+/+) or deficient (-/-) MEFs treated with BZM (100 nM) for 6 h were precipitated with TUBEs to pull down polyubiquitinated proteins under denaturing conditions and analyzed by Western blots. *IP*, immunoprecipitation. *B* and *C*, NRVMs expressing Strep- and FLAG-tagged NEDD8 (*SF-NEDD8*) were infected with Ad expressing FLAG-tagged NUB1L (*Ad-NUB1L*) or β -gal (*Ad-Gal*) or transfected with siRNA against UBE1 (*siUBE1*). BZM (100 nM) or MLN4924 (1 μ M) was added 6 h before cell harvest. *B*, representative Western blots of total cell lysates. *Conj.*, conjugate. *C*, polyubiquitinated or neddylated proteins were pulled down with TUBEs or NEDD8 antibody from cell extracts under denaturing conditions and analyzed by Western blots. *D*, CHX chase assay. Representative Western blots (*top panel*) and densitometric analysis (*bottom panel*) are shown. The NEDD8 densitometries were relative to its level at 0 h.

neddylation of ubiquitinated proteins were pulled down using specific NEDD8 antibodies and probed for ubiquitin, and we also found a reduction of Ub-NEDD8 mixed modified proteins in NUB1L-overexpressing cardiomyocytes (Fig. 3C). These data demonstrate that NUB1L potently suppresses atypical neddylation but not typical neddylation. Supporting a role of NUB1L in NEDD8 degradation (20), NUB1L expression decreased free NEDD8 proteins (Fig. 3B). A cycloheximide-based chase assay further revealed that NUB1L overexpression significantly shortened the half-life of NEDD8 from >36 h to <12 h (Fig. 3D). Therefore, we conclude that NUB1L suppresses stress-induced atypical neddylation by promoting NEDD8 degradation.

Activation of Atypical Neddylation Increases GFPu Protein Levels—The functional consequence of atypical neddylation is not known. Given that polyubiquitination often causes protein degradation by the proteasome (37), we sought to determine whether the addition of NEDD8 into the ubiquitin chain impacts proteasomal function. Ubiquitin-proteasome system (UPS) function was assessed using a sensitive GFPu/RFP reporter system in which GFPu protein levels inversely reflect proteasomal function because GFPu, but not RFP, is degraded

readily by the proteasome because of the fusion of a CL1 degron signal to GFP (27).

It has been shown that forced expression of NEDD8 suffices to induce UBE1-dependent atypical neddylation (38). In HEK293 cells stably expressing GFPu and RFP, NEDD8 overexpression dramatically increased neddylated proteins and accumulated GFPu without altering RFP protein levels in a dose-dependent manner (Fig. 4, A and B). In contrast, expression of its conjugation-deficient mutant SF-NEDD8 Δ GG (deletion of C-terminal diglycine) at equivalent or higher levels did not increase neddylated proteins or accumulate GFPu. Similarly, in Ad-GFPu- and Ad-RFP-coinfected cultured cardiomyocytes, NEDD8 overexpression also led to a dose-dependent increase of GFPu with no effect on RFP (Fig. 4, C and D). Our data suggest that activation of atypical neddylation impairs the proteolytic function of the UPS.

NUB1L Enhances GFPu Degradation in Cardiomyocytes—We next asked whether suppression of atypical neddylation improves proteasomal proteolysis. NUB1L overexpression dose-dependently decreased GFPu protein levels without altering those of RFP in cardiomyocytes (Fig. 5A). The decrease in

NUB1L in Atypical Neddylation and Proteolysis

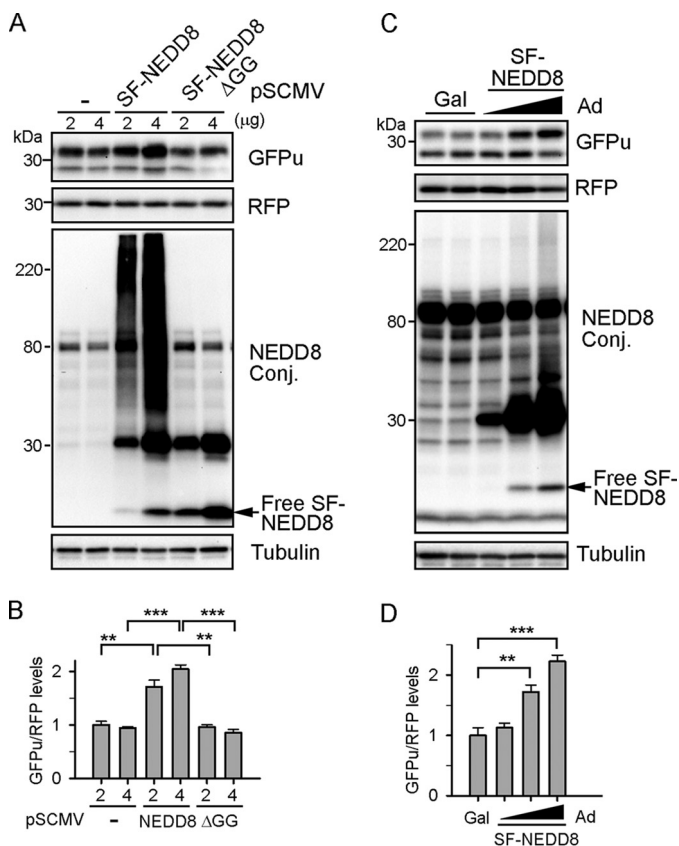


FIGURE 4. Activation of atypical neddylation accumulates a proteasome surrogate substrate GFPu. *A* and *B*, HEK293 cells stably expressing GFPu and RFP were transfected with the SF-NEDD8 or SF-NEDD8ΔGG expression vectors for 48 h. *Conj.*, conjugate. *C* and *D*, NRVMs were infected with Ad-GFPu and Ad-RFP before infection with Ad-SF-NEDD8 for another 48 h. Representative immunoblots of the indicated proteins (*A* and *C*) and quantitative analyses (*B* and *D*) are shown. **, $p < 0.01$; ***, $p < 0.001$.

GFPu protein levels were not accompanied by changes in its mRNA levels (Fig. 5*B*) and were effectively abolished by proteasome inhibition (Fig. 5*A*). We also performed a cycloheximide chase assay and found that NUB1L expression reduced the half-life of GFPu from >120 min to ~60 min (Fig. 5, *C* and *D*). Moreover, in line with the reduced levels of neddylated proteins, NUB1L overexpression abrogated H₂O₂-, si-, and si/R-induced accumulation of GFPu proteins (Fig. 5, *E* and *F*). These data indicate that suppression of neddylation by NUB1L overexpression enhances proteasomal proteolysis under basal and stress conditions.

NUB1L Regulates the Clearance of a Bona Fide Misfolded Protein, CryAB^{R120G}—The results above demonstrate the ability of NUB1L to promote the degradation of an artificial proteasome surrogate substrate. We next wanted to determine the effect of NUB1L on the clearance of a *bona fide* misfolded protein. As mentioned above, CryAB^{R120G} expression causes desmin-related cardiomyopathy in mice and humans (25). HA-tagged CryAB^{R120G} was expressed in cultured NRVMs via adenoviral delivery. NUB1L overexpression significantly reduced the steady-state protein levels of CryAB^{R120G} and its modified species with slower mobility in both Triton X-100-soluble and -insoluble fractions (Fig. 6*A*). The quantitative protein dot blot analysis revealed ~50 and ~80% reductions of CryAB^{R120G} in soluble and insoluble fractions, respec-

tively, by NUB1L overexpression (Fig. 6*B*). In contrast, silencing of NUB1L robustly built up free and modified forms of HA-tagged CryAB^{R120G} (Fig. 6*C*). The protein dot blot analysis showed a more than 2-fold increase of CryAB^{R120G} in the soluble and insoluble fractions of NUB1L-silenced cardiomyocytes (Fig. 6*D*).

Furthermore, NUB1L expression had no discernible effect on the abundance of endogenous and transgenic wild-type CryAB (Fig. 7, *A* and *B*), suggesting its specific effect on misfolded proteins. Quantitative real-time PCR analyses revealed that neither overexpression nor silencing of NUB1L altered the transcripts of CryAB^{R120G} (Fig. 7*C*). CryAB^{R120G} is known to be degraded through the UPS (36). Indeed, proteasome inhibition significantly restored NUB1L-diminished CryAB^{R120G} proteins (15% reduction with bortezomib treatment *versus* 40% reduction without bortezomib treatment) (Fig. 7, *D* and *E*). The cycloheximide-based chase analysis showed that NUB1L expression significantly reduced the half-life of CryAB^{R120G} (Fig. 7, *F* and *G*), proving that NUB1L boosts the degradation of CryAB^{R120G}. These lines of evidence suggest that NUB1L is necessary for, and sufficient to enhance, the clearance of this cardiomyopathy-linked misfolded protein.

NUB1L Enhances the Proteasomal Degradation of Ubiquitinated Misfolded Proteins—We then asked how NUB1L facilitates the degradation of CryAB^{R120G}. Proteasomal degradation of a target protein generally involves two steps: the polyubiquitination of the target protein and its subsequent degradation by the proteasome (37). We first assessed whether NUB1L directly impacts proteasome activities. Overexpression of NUB1L in cardiomyocytes did not alter the protein levels of representative subunits of the 20S (20S core and PSMB5), 19S (Rpt6), and 11S (PA28α) proteasomes (Fig. 8*A*). We next measured the proteasomal chymotrypsin-like and caspase-like peptidase activities in cardiomyocyte lysates. Neither of these activities was affected by NUB1L overexpression (Fig. 8*B*), suggesting an intact proteasomal activity in NUB1L overexpressed cardiomyocytes.

We then tested whether NUB1L overexpression alters the ubiquitination of misfolded proteins. CryAB^{R120G} was pulled down and probed with anti-K48 Ub antibody, which specifically detects lysine 48-linked poly-Ub chains, the major signals of proteasomal degradation. NUB1L overexpression substantially reduced Lys-48-linked polyubiquitinated CryAB^{R120G}, and the reduction was abolished in the presence of a proteasome inhibitor (Fig. 8*C*), indicating a quicker turnover of polyubiquitinated CryAB^{R120G}. We next purified polyubiquitinated proteins using TUBEs from Ad-CryAB^{R120G}-infected cardiomyocytes under denaturing conditions. Consistently, NUB1L overexpression effectively diminished polyubiquitinated proteins, and the decrease was abolished by proteasome inhibition (Fig. 8*D*). NUB1L expression largely reduced the species modified by the Ub-NEDD8 mixed chain, even in the presence of a proteasome inhibitor (Fig. 5*E*). We assumed that the Ub-NEDD8 mixed modified (*i.e.* atypically neddylated) proteins were less efficiently degraded by the proteasome compared with those modified homogeneously by ubiquitin. We therefore propose that NUB1L enhances the proteasomal degradation of misfolded proteins by suppressing the Ub-NEDD8 mixed modification.

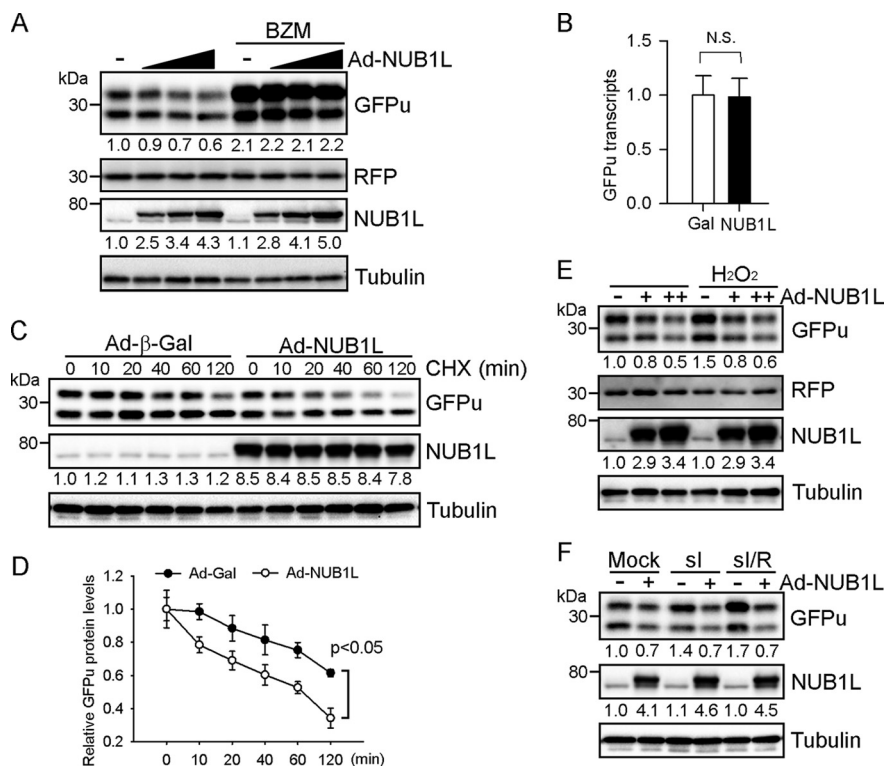


FIGURE 5. **NUB1L overexpression enhances the degradation of GFPu.** NRVMs were first infected with Ad expressing GFPu (*Ad-GFPu*) and RFP (*Ad-RFP*) for 24 h and subsequently with Ad-NUB1L or Ad-Gal. **A**, representative Western blots of total cell extracts are shown. Ad-NUB1L was infected at 5, 10, and 20 MOI and Ad-Gal at 20 MOI. BZM (100 nM) was added 6 h prior to cell harvesting. **B**, quantitative real-time PCR analysis of GFPu transcripts. *N.S.*, not significant. **C** and **D**, CHX chase assay. Representative Western blots (**C**) and the quantification (**D**) are shown. GFPu protein levels at 0 h were set as 1. **E** and **F**, cells were treated with H₂O₂ (100 μM) for 8 h (**E**), si for 6 h, or si followed by reperfusion for another 6 h (*si/R*) (**F**) prior to cell harvesting. Ad-NUB1L was infected at 10 and 20 (**E**) or 10 MOI (**F**). Representative Western blots of total cell extracts are shown. The fast-migrating band of GFPu is its N-terminal truncated form. The densitometries of GFPu normalized to RFP or NUB1L are denoted in **A**, **C**, **E**, and **F**.

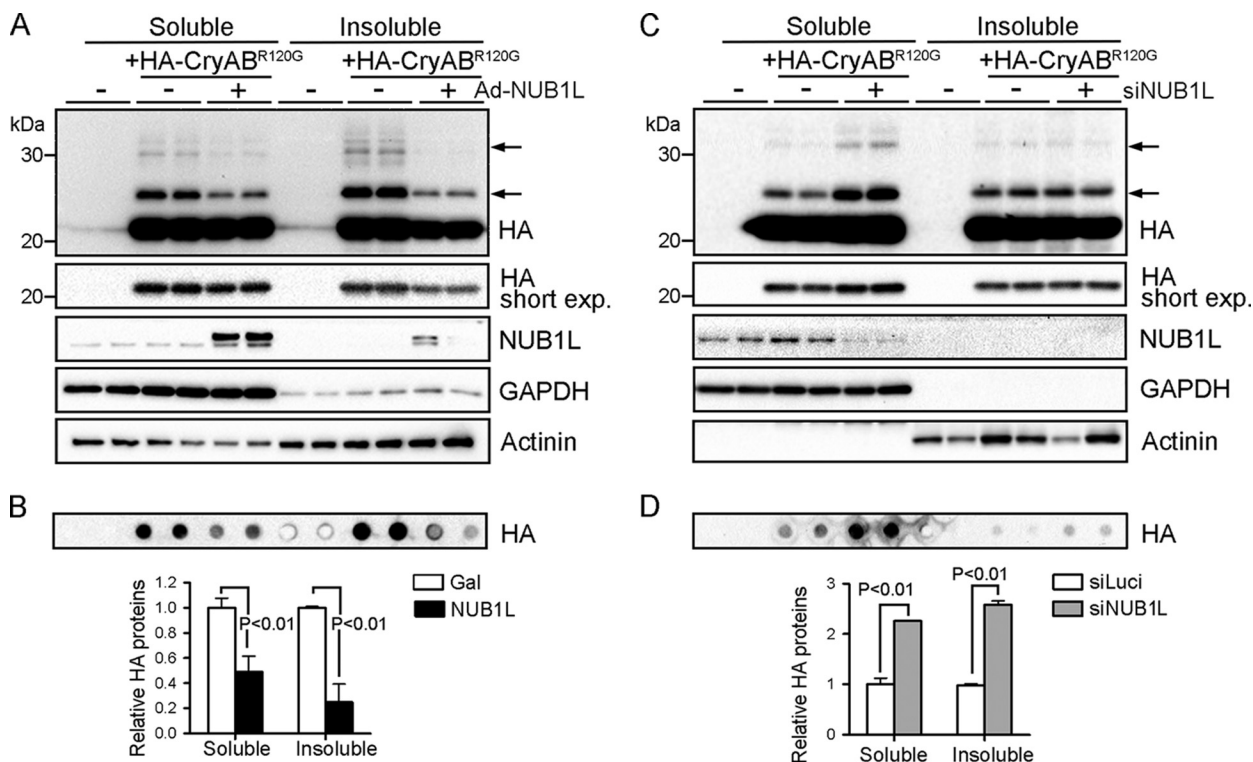


FIGURE 6. **NUB1L reduces misfolded protein CryAB^{R120G} in cardiomyocytes.** NRVMs were infected with Ad expressing HA-tagged CryAB^{R120G} (*Ad-HA-CryAB^{R120G}*) for 24 h and subsequently infected with Ad-NUB1L (20 MOI) or transfected with siRNA against NUB1L (*siNUB1L*) for another 72 h. **A—D**, the Triton X-100 (1%) soluble and insoluble fractions of cell extracts were subjected to Western blot analysis (**A** and **C**) and protein dot blot to quantify the abundance of CryAB^{R120G} (**B** and **D**). *Exp*, exposure.

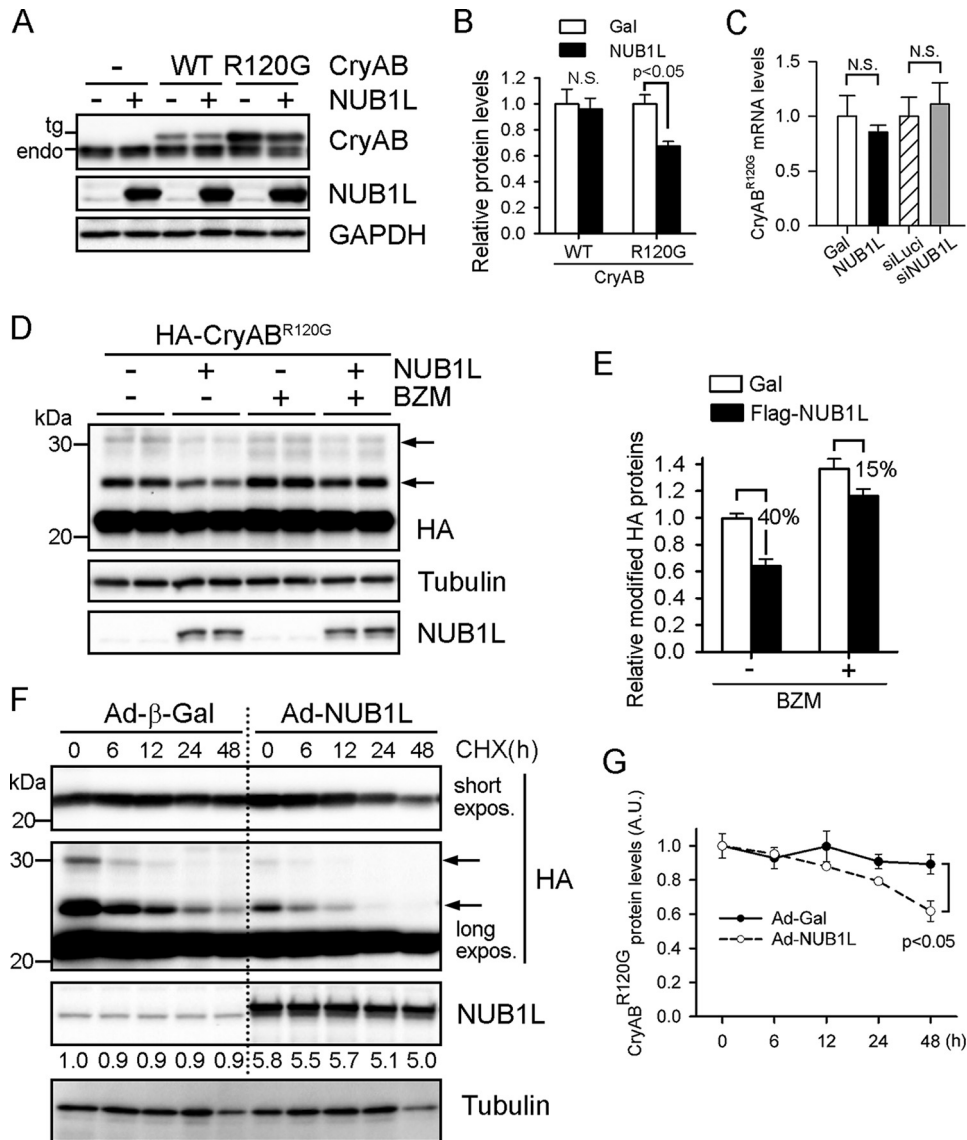


FIGURE 7. **NUB1L promotes the proteasomal degradation of CryAB^{R120G}**. NRVMs were infected with Ad-HA-CryAB^{R120G} or WT CryAB for 24 h and subsequently infected with Ad-NUB1L (20 MOI). *A* and *B*, Western blots of total cell extracts (*A*) and quantification analysis (*B*). NUB1L overexpression reduced CryAB^{R120G} but not WT-CryAB protein levels. *Endo*, endogenous; *N.S.*, not significant. *C*, quantitative PCR analysis of CryAB^{R120G} transcripts. *D* and *E*, proteasome inhibition attenuates the NUB1L-induced reduction of CryAB^{R120G}. Representative Western blots (*D*) of total cell extracts and densitometric analysis (*E*) are shown. BZM was added 24 h before cell harvesting. *F* and *G*, CHX chase assay. Representative Western blots of total cell extracts (*F*) and pooled densitometry data (*G*) of CryAB^{R120G} are shown. The changes of the native form and modified forms (arrows) of CryAB^{R120G} are shown in the short and long exposure (expos) blots, respectively. The abundance of NUB1L is denoted under the blot. *A.U.*, arbitrary unit.

NUB1L Protects against Proteotoxic Stress—Considerable evidence suggests that misfolded proteins accumulate because of insufficient proteasomal function under stress conditions and are toxic to the cells (39). For this reason, we next sought to examine the role of NUB1L in proteotoxic stress-induced cell injury. As expected, NUB1L overexpression blunted low-dose bortezomib-induced apoptosis in cardiomyocytes, as measured by the cleavage (activation) of caspase 3 (Fig. 9, *A* and *B*). In contrast, silencing of NUB1L sensitized cardiomyocytes to bortezomib-induced cell death, as evidenced by increased leakage of lactate dehydrogenase in culture medium (Fig. 9*C*). In MEFs, proteasome inhibition increased the cleavage of caspase 3 and the release of lactate dehydrogenase and reduced cell viability, which were aggravated significantly by loss of NUB1L

(Fig. 9, *D–F*). These findings together indicate a protective role of NUB1L against proteotoxic stress.

Discussion

In this study, we reveal that neddylation is dysregulated in the diseased hearts of mouse models of desmin-related cardiomyopathy and human patients. We demonstrate that proteotoxic stress induces excessive neddylation in cardiomyocytes, particularly UBE1-mediated atypical neddylation, which, in turn, directly or indirectly impairs proteasome function. NUB1L suppresses the neddylation of ubiquitinated proteins through promoting the degradation of NEDD8 and improves the proteasomal degradation of misfolded proteins such as CryAB^{R120G}. Therefore, NUB1L protects the cells against

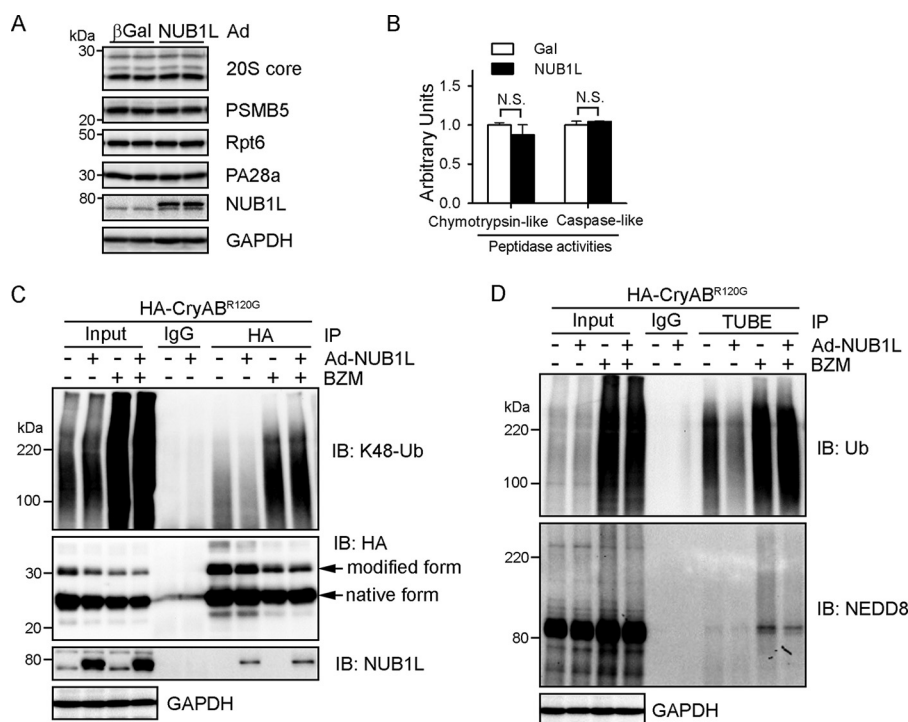


FIGURE 8. NUB1L overexpression accelerates the turnover of ubiquitinated misfolded proteins. *A*, the effects of NUB1L on proteasome abundance. Western blots of the indicated proteasome subunits in total cell extracts are shown. *B*, the effects of NUB1L on proteasome peptidase activities. *n* = 6 biological repeats. *N.S.*, not significant. *C* and *D*, NRVMs were infected with Ad-NUB1L or Ad-Gal for 72 h. Ad-HA-CryAB^{R120G} was infected 24 h prior to Ad-NUB1L infection, and BZM was added 24 h before cell harvesting. *C*, NUB1L overexpression reduced Lys-48-linked ubiquitinated CryAB^{R120G}, and proteasome inhibition attenuated the reduction. CryAB^{R120G} was immunoprecipitated (IP) with anti-HA antibodies from cell lysate and blotted (IB) with the indicated antibodies. Data are representative of three independent repeats. *D*, polyubiquitinated proteins were precipitated from cell lysates using TUBEs under denaturing conditions and blotted with the indicated antibodies. Data are representative of three independent repeats.

proteotoxic stress by ensuring proteasome-mediated protein quality control (Fig. 9G).

Implications of Aberrant Neddylolation in Cardiac Pathogenesis—Germline deletion of NEDD8 E1 (NAE1 or UBA3), E2 (Ubc12), or any subunit of the deneddylase CSN all lead to embryonic lethality in mice (11), which highlights the importance of the NEDD8 pathway in embryonic development but precludes the investigation of its roles in the heart. Our study reveals a remarkable increase of neddylolated proteins in the diseased hearts of mouse models of desmin-related cardiomyopathy and human patients (Fig. 1, A–C), which, to our knowledge, is the first report to tie aberrant neddylolation to cardiac diseases. We have shown previously that cardiac-specific knockout of CSN8 impairs deneddylolation and causes dilated cardiomyopathy in both postnatal and adult mouse hearts (14, 15). We speculate that the overwhelming neddylolation seen in diseased hearts is likely a pathogenic factor contributing to cardiac dysfunction. Neddylolation inhibition by NAE1 deficiency in neurons results in loss of synapses, impaired neurotransmission, and cognitive deficits (16). In the future, more in-depth studies are imperative to determine the pathophysiological significance of neddylolation in the heart.

NUB1L Enhances Proteasomal Proteolysis through Suppression of Atypical Neddylolation—Our data uncovered that proteotoxic stress, primarily resulting from proteasome dysfunction, is a critical trigger of excessive neddylolation in cardiomyocytes (Fig. 2). In cardiomyocytes, proteasome inhibition activates both NAE-mediated (typical) and UBE1-mediated (atypical)

neddylolation (Fig. 2, B and C). A substantial change in the Ub-to-NEDD8 ratio under stress condition has been proposed as a trigger to stimulate atypical neddylolation (17, 18). Given the similarity of NEDD8 and Ub in amino acid sequence and quaternary structure, it has been postulated that NEDD8 may substitute for Ub and cap the extension of Ub chains, therefore preserving the free Ub pool and avoiding otherwise catastrophic effects on cells (17, 40).

The functional consequence of atypical neddylolation, especially neddylolation of ubiquitinated proteins, is currently unknown. Using a UPS functional reporter, we revealed that activation of atypical neddylolation by multiple means (overexpression of NEDD8, H₂O₂, or sI treatment) impairs UPS function (Figs. 4 and 5, E and F). Moreover, suppression of atypical neddylolation by NUB1L enhances UPS function at baseline and under stress condition (Fig. 5). We further showed that NUB1L promotes the proteasomal degradation of a misfolded protein (Figs. 6–8). These lines of compelling evidence are strongly in agreement with the notion that neddylolation of ubiquitinated proteins impairs their proteasomal proteolysis.

How does atypical neddylolation impair proteasomal proteolysis? We and others have shown that the increase in neddylolated proteins by proteasome inhibition is due to the activation of neddylolation (Figs. 2B and 3B) (17, 18), suggesting that the neddylolated proteins are not readily degraded by the proteasome. The NEDD8 signals detected in the precipitates from TUBEs, which enrich essentially Lys-48-linked polyubiquitinated proteins under proteasome inhibition condition, suggest that NEDD8 likely incorpo-

NUB1L in Atypical Neddylated and Proteolysis

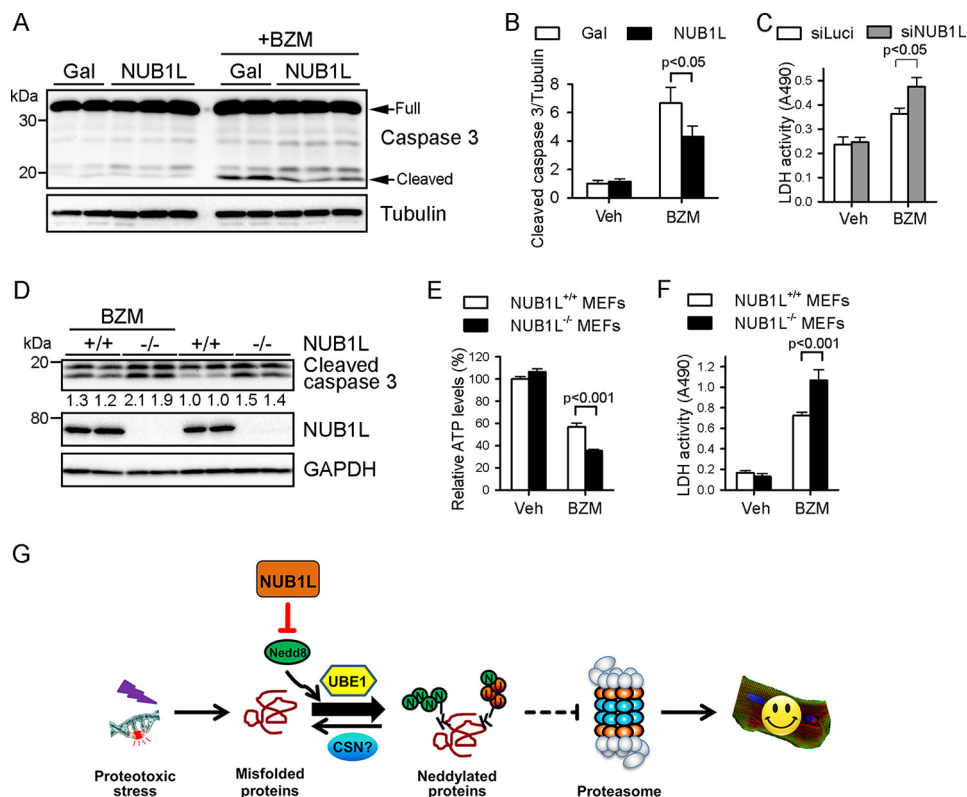


FIGURE 9. NUB1L ameliorates proteotoxic stress-induced cytotoxicity. A–C, NRVMs were infected with the indicated adenovirus (A and B) or transfected with the indicated siRNA (C) for 48 h before being subjected to BZM (100 nM) treatment for another 24 h. Representative Western blots of total cell extracts (A) and the densitometric analysis (B) are shown. $n = 4–6$ /group. Veh, vehicle. C, culture medium was collected for the lactate dehydrogenase (LDH) activity assay. D–F, NUB1L wild-type (+/+) or deficient (–/–) MEFs were treated with BZM (100 nM) for 24 h. D, representative Western blots of total cell lysates and the densitometries of cleaved caspase 3 relative to those of GAPDH. E, cell viability assay by measuring cellular ATP levels. F, LDH activity assay. For cell viability and LDH release assays (C, E, and F), data are representative of three independent experiments. $n = 6–8$ samples/group for each replication. G, model of the function of NUB1L in proteasomal proteolysis.

rates into the Lys-48-linked polyubiquitin chains. NEDD8 and Ub are recognized by Ub shuttle proteins with equivalent affinity *in vitro* and can form heterodimers in cultured cells (40). This Ub-NEDD8 heterodimer can bind to, and be processed by, the proteasome *in vitro* (40). Moreover, neddylated proteins have been reported to be copurified with the proteasome complex in mammalian cells (41). Therefore, under proteotoxic stress conditions, massive levels of neddylated proteins, which are resistant to proteasome degradation, may compete for the Ub shuttle proteins and proteasome machineries, leading to inefficient degradation of polyubiquitinated proteins. These possibilities will be a matter of future investigation.

Supporting this model, the deneddylase CSN associates with the proteasome in cells and is able to process Ub-NEDD8 heterodimers *in vitro* (40). Furthermore, loss of CSN deneddylase activity leads to the accumulation of neddylated proteins and impairs UPS proteolysis in mouse hearts (14, 15). Therefore, CSN could be a proteasome-resident deneddylase to process neddylated proteins and preserve UPS function (14, 15). By suppressing atypical neddylated under proteotoxic stress, NUB1L alleviates the competition and promotes the turnover of polyubiquitinated proteins (Fig. 8, C and D), thereby improving UPS function. Supporting the role of NUB1L in proteasome proteolysis, NUB1L promotes the polyubiquitination and clearance of mutant Huntingtin, tau, and synphilin 1 and reduces the formation of inclusions (21–23). In addition, NUB1L knockdown accumulates Cyclin E and p27, both proteins known to be degraded by the proteasome (42).

The maintenance of protein homeostasis by the UPS is crucial to the survival of cells, especially those with limited renewal capacity, such as cardiomyocytes. Inadequate protein quality control is increasingly recognized as an important pathogenic factor to a large subset of cardiac diseases (39, 43), and measures to enhance protein quality control are promising new strategies to treat cardiac diseases (36, 44). Our results indicate that atypical neddylated may contribute to inefficient proteolysis upon proteotoxic stress. It should be pointed out that targeting UBE1 to inhibit atypical neddylated may not be desirable to the cells because of the essential role of UBE1 in ubiquitin activation (37). Here we identify NUB1L as a potent suppressor of atypical neddylated and a novel regulator of protein quality control. Selective targeting of atypical neddylated, such as by up-regulation of NUB1L, could provide a new avenue to treat cardiac diseases associated with defective protein quality control.

Author Contributions—J. L. and H. S. designed the experiments. J. L., W. M., and H. L. performed and analyzed the majority of experiments. N. H. and F. L. performed and analyzed the immunohistochemistry experiments. X. W. and I. K. provided critical reagents and useful discussions. J. L. and H. S. wrote the manuscript.

Acknowledgments—We thank Dr. John A. Johnson (Georgia Regents University) for insightful suggestions.

References

1. Hochstrasser, M. (2009) Origin and function of ubiquitin-like proteins. *Nature* **458**, 422–429
2. Herrmann, J., Lerman, L. O., and Lerman, A. (2007) Ubiquitin and ubiquitin-like proteins in protein regulation. *Circ. Res.* **100**, 1276–1291
3. Kumar, S., Yoshida, Y., and Noda, M. (1993) Cloning of a cDNA which encodes a novel ubiquitin-like protein. *Biochem. Biophys. Res. Commun.* **195**, 393–399
4. Enchev, R. I., Schulman, B. A., and Peter, M. (2015) Protein neddylation: beyond cullin-RING ligases. *Nat. Rev. Mol. Cell Biol.* **16**, 30–44
5. Watson, I. R., Irwin, M. S., and Ohh, M. (2011) NEDD8 pathways in cancer, *sine quibus non*. *Cancer Cell* **19**, 168–176
6. Petroski, M. D., and Deshaies, R. J. (2005) Function and regulation of cullin-RING ubiquitin ligases. *Nat. Rev. Mol. Cell Biol.* **6**, 9–20
7. Zuo, W., Huang, F., Chiang, Y. J., Li, M., Du, J., Ding, Y., Zhang, T., Lee, H. W., Jeong, L. S., Chen, Y., Deng, H., Feng, X. H., Luo, S., Gao, C., and Chen, Y. G. (2013) c-Cbl-mediated neddylation antagonizes ubiquitination and degradation of the TGF- β type II receptor. *Mol. Cell* **49**, 499–510
8. Watson, I. R., Blanch, A., Lin, D. C., Ohh, M., and Irwin, M. S. (2006) Mdm2-mediated NEDD8 modification of TAp73 regulates its transactivation function. *J. Biol. Chem.* **281**, 34096–34103
9. Xirodimas, D. P., Saville, M. K., Bourdon, J. C., Hay, R. T., and Lane, D. P. (2004) Mdm2-mediated NEDD8 conjugation of p53 inhibits its transcriptional activity. *Cell* **118**, 83–97
10. Xie, P., Zhang, M., He, S., Lu, K., Chen, Y., Xing, G., Lu, Y., Liu, P., Li, Y., Wang, S., Chai, N., Wu, J., Deng, H., Wang, H. R., Cao, Y., Zhao, F., Cui, Y., Wang, J., He, F., and Zhang, L. (2014) The covalent modifier Nedd8 is critical for the activation of Smurf1 ubiquitin ligase in tumorigenesis. *Nat. Commun.* **5**, 3733
11. Kandala, S., Kim, I. M., and Su, H. (2014) Neddylation and deneddylation in cardiac biology. *Am. J. Cardiovasc. Dis.* **4**, 140–158
12. Tateishi, K., Omata, M., Tanaka, K., and Chiba, T. (2001) The NEDD8 system is essential for cell cycle progression and morphogenetic pathway in mice. *J. Cell Biol.* **155**, 571–579
13. Soucy, T. A., Smith, P. G., Milhollen, M. A., Berger, A. J., Gavin, J. M., Adhikari, S., Brownell, J. E., Burke, K. E., Cardin, D. P., Critchley, S., Cullis, C. A., Doucette, A., Garnsey, J. J., Gaulin, J. L., Gershman, R. E., Lublinsky, A. R., McDonald, A., Mizutani, H., Narayanan, U., Olhava, E. J., Peluso, S., Rezaei, M., Sintchak, M. D., Talreja, T., Thomas, M. P., Traore, T., Vyskocil, S., Weatherhead, G. S., Yu, J., Zhang, J., Dick, L. R., Claiborne, C. F., Rolfe, M., Bolen, J. B., and Langston, S. P. (2009) An inhibitor of NEDD8-activating enzyme as a new approach to treat cancer. *Nature* **458**, 732–736
14. Su, H., Li, J., Menon, S., Liu, J., Kumarapeli, A. R., Wei, N., and Wang, X. (2011) Perturbation of cullin deneddylation via conditional Csn8 ablation impairs the ubiquitin-proteasome system and causes cardiomyocyte necrosis and dilated cardiomyopathy in mice. *Circ. Res.* **108**, 40–50
15. Su, H., Li, J., Osinska, H., Li, F., Robbins, J., Liu, J., Wei, N., and Wang, X. (2013) The COP9 signalosome is required for autophagy, proteasome-mediated proteolysis, and cardiomyocyte survival in adult mice. *Circ. Heart Fail.* **6**, 1049–1057
16. Vogl, A. M., Brockmann, M. M., Giusti, S. A., Maccarrone, G., Vercelli, C. A., Bauder, C. A., Richter, J. S., Roselli, F., Hafner, A. S., Dedic, N., Wotjak, C. T., Vogt-Weisenhorn, D. M., Choquet, D., Turck, C. W., Stein, V., Deussing, J. M., and Refojo, D. (2015) Neddylation inhibition impairs spine development, destabilizes synapses and deteriorates cognition. *Nat. Neurosci.* **18**, 239–251
17. Leidecker, O., Matic, I., Mahata, B., Pion, E., and Xirodimas, D. P. (2012) The ubiquitin E1 enzyme Ube1 mediates NEDD8 activation under diverse stress conditions. *Cell Cycle* **11**, 1142–1150
18. Hjerpe, R., Thomas, Y., Chen, J., Zemla, A., Curran, S., Shpiro, N., Dick, L. R., and Kurz, T. (2012) Changes in the ratio of free NEDD8 to ubiquitin triggers NEDDylation by ubiquitin enzymes. *Biochem. J.* **441**, 927–936
19. Tanaka, T., Kawashima, H., Yeh, E. T., and Kamitani, T. (2003) Regulation of the NEDD8 conjugation system by a splicing variant, NUB1L. *J. Biol. Chem.* **278**, 32905–32913
20. Liu, S., Yang, H., Zhao, J., Zhang, Y. H., Song, A. X., and Hu, H. Y. (2013) NEDD8 ultimate buster-1 long (NUB1L) protein promotes transfer of NEDD8 to proteasome for degradation through the P97UFD1/NPL4 complex. *J. Biol. Chem.* **288**, 31339–31349
21. Tanji, K., Tanaka, T., Mori, F., Kito, K., Takahashi, H., Wakabayashi, K., and Kamitani, T. (2006) NUB1 suppresses the formation of Lewy body-like inclusions by proteasomal degradation of synphilin-1. *Am. J. Pathol.* **169**, 553–565
22. Richet, E., Pooler, A. M., Rodriguez, T., Novoselov, S. S., Schmidtke, G., Groettrup, M., Hanger, D. P., Cheetham, M. E., and van der Spuy, J. (2012) NUB1 modulation of GSK3 β reduces Tau aggregation. *Hum. Mol. Genet.* **21**, 5254–5267
23. Lu, B., Al-Ramahi, I., Valencia, A., Wang, Q., Berenshteyn, F., Yang, H., Gallego-Flores, T., Ichcho, S., Lacoste, A., Hild, M., Difiglia, M., Botas, J., and Palacino, J. (2013) Identification of NUB1 as a suppressor of mutant Huntington toxicity via enhanced protein clearance. *Nat. Neurosci.* **16**, 562–570
24. Embade, N., Fernández-Ramos, D., Varela-Rey, M., Beraza, N., Sini, M., Gutiérrez de Juan, V., Woodhoo, A., Martínez-López, N., Rodríguez-Iruretagoyena, B., Bustamante, F. J., de la Hoz, A. B., Carracedo, A., Xirodimas, D. P., Rodríguez, M. S., Lu, S. C., Mato, J. M., and Martínez-Chantar, M. L. (2012) Murine double minute 2 regulates Hu antigen R stability in human liver and colon cancer through NEDDylation. *Hepatology* **55**, 1237–1248
25. Wang, X., Osinska, H., Klevitsky, R., Gerdes, A. M., Nieman, M., Lorenz, J., Hewett, T., and Robbins, J. (2001) Expression of R120G- α B-crystallin causes aberrant desmin and α B-crystallin aggregation and cardiomyopathy in mice. *Circ. Res.* **89**, 84–91
26. Wang, X., Osinska, H., Dorn, G. W., 2nd, Nieman, M., Lorenz, J. N., Gerdes, A. M., Witt, S., Kimball, T., Gulick, J., and Robbins, J. (2001) Mouse model of desmin-related cardiomyopathy. *Circulation* **103**, 2402–2407
27. Su, H., Huang, W., and Wang, X. (2009) The COP9 signalosome negatively regulates proteasome proteolytic function and is essential to transcription. *Int. J. Biochem. Cell Biol.* **41**, 615–624
28. Xu, J. (2005) Preparation, culture, and immortalization of mouse embryonic fibroblasts. *Curr. Protoc. Mol. Biol.* Chapter 28, Unit 28.1
29. Zheng, Q., Su, H., Ranek, M. J., and Wang, X. (2011) Autophagy and p62 in cardiac proteinopathy. *Circ. Res.* **109**, 296–308
30. Fahmi, A., Smart, N., Punn, A., Jabr, R., Marber, M., and Heads, R. (2013) p42/p44-MAPK and PI3K are sufficient for IL-6 family cytokines/gp130 to signal to hypertrophy and survival in cardiomyocytes in the absence of JAK/STAT activation. *Cell Signal.* **25**, 898–909
31. Powell, S. R., Davies, K. J., and Divald, A. (2007) Optimal determination of heart tissue 26S-proteasome activity requires maximal stimulating ATP concentrations. *J. Mol. Cell Cardiol.* **42**, 265–269
32. Sanbe, A., Osinska, H., Saffitz, J. E., Glabe, C. G., Kayed, R., Maloyan, A., and Robbins, J. (2004) Desmin-related cardiomyopathy in transgenic mice: a cardiac amyloidosis. *Proc. Natl. Acad. Sci. U.S.A.* **101**, 10132–10136
33. Weekes, J., Morrison, K., Mullen, A., Wait, R., Barton, P., and Dunn, M. J. (2003) Hyperubiquitination of proteins in dilated cardiomyopathy. *Proteomics* **3**, 208–216
34. Hjerpe, R., Aillet, F., Lopitz-Otsoa, F., Lang, V., England, P., and Rodriguez, M. S. (2009) Efficient protection and isolation of ubiquitylated proteins using tandem ubiquitin-binding entities. *EMBO Rep.* **10**, 1250–1258
35. Li, J., Powell, S. R., and Wang, X. (2011) Enhancement of proteasome function by PA28 α : overexpression protects against oxidative stress. *FASEB J.* **25**, 883–893
36. Li, J., Horak, K. M., Su, H., Sanbe, A., Robbins, J., and Wang, X. (2011) Enhancement of proteasomal function protects against cardiac proteinopathy and ischemia/reperfusion injury in mice. *J. Clin. Invest.* **121**, 3689–3700
37. Glickman, M. H., and Ciechanover, A. (2002) The ubiquitin-proteasome proteolytic pathway: destruction for the sake of construction. *Physiol. Rev.* **82**, 373–428
38. Hjerpe, R., Thomas, Y., and Kurz, T. (2012) NEDD8 overexpression results in neddylation of ubiquitin substrates by the ubiquitin pathway. *J. Mol. Biol.* **421**, 27–29
39. Sandri, M., and Robbins, J. (2014) Proteotoxicity: an underappreciated

NUB1L in Atypical Neddylation and Proteolysis

- pathology in cardiac disease. *J. Mol. Cell Cardiol.* **71**, 3–10
40. Singh, R. K., Zerath, S., Kleinfeld, O., Scheffner, M., Glickman, M. H., and Fushman, D. (2012) Recognition and cleavage of related to ubiquitin 1 (Rub1) and Rub1-ubiquitin chains by components of the ubiquitin-proteasome system. *Mol. Cell Proteomics* **11**, 1595–1611
 41. Kamitani, T., Kito, K., Fukuda-Kamitani, T., and Yeh, E. T. (2001) Targeting of NEDD8 and its conjugates for proteasomal degradation by NUB1. *J. Biol. Chem.* **276**, 46655–46660
 42. Hosono, T., Tanaka, T., Tanji, K., Nakatani, T., and Kamitani, T. (2010) NUB1, an interferon-inducible protein, mediates anti-proliferative actions and apoptosis in renal cell carcinoma cells through cell-cycle regulation. *Br. J. Cancer* **102**, 873–882
 43. Wang, X., and Robbins, J. (2006) Heart failure and protein quality control. *Circ. Res.* **99**, 1315–1328
 44. Maejima, Y., Kyoji, S., Zhai, P., Liu, T., Li, H., Ivessa, A., Sciarretta, S., Del Re, D. P., Zablocki, D. K., Hsu, C. P., Lim, D. S., Isobe, M., and Sadoshima, J. (2013) Mst1 inhibits autophagy by promoting the interaction between Beclin1 and Bcl-2. *Nat. Med.* **19**, 1478–1488