

# SCIENTIFIC REPORTS

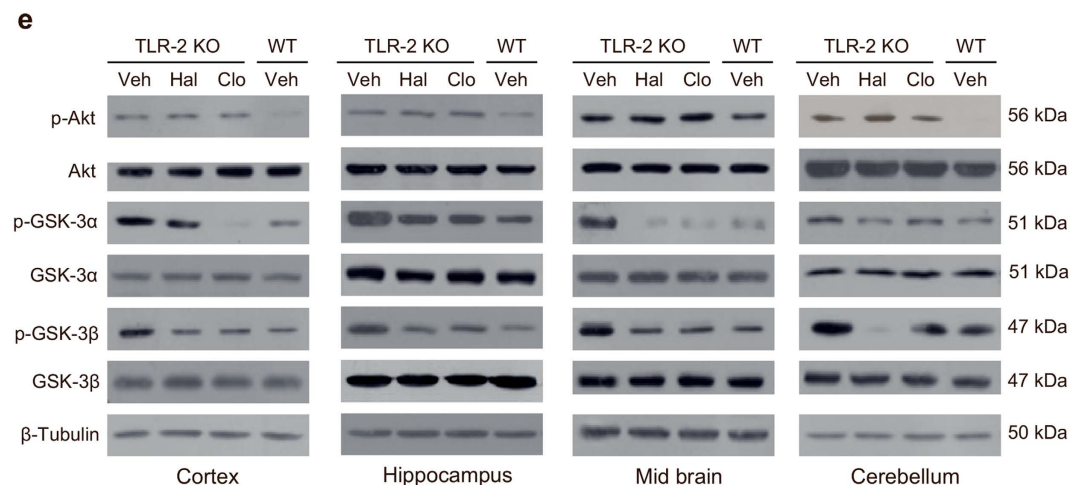
OPEN

## Corrigendum: Toll-like receptor-2 deficiency induces schizophrenia-like behaviors in mice

Se Jin Park, Jee Youn Lee, Sang Jeong Kim, Se-Young Choi, Tae Young Yune & Jong Hoon Ryu

*Scientific Reports* 5:8502; doi: 10.1038/srep08502; published online 17 February 2015; updated on 18 September 2015

This Article contains an error in Fig. 5e, where the p-Akt immunoblots depicted for the Cerebellum are a duplication of the p-Akt immunoblots depicted for the Hippocampus. The correct Fig. 5e appears below as Fig. 1.



**Figure 1.**



This work is licensed under a Creative Commons Attribution 4.0 International License. The images or other third party material in this article are included in the article's Creative Commons license, unless indicated otherwise in the credit line; if the material is not included under the Creative Commons license, users will need to obtain permission from the license holder to reproduce the material. To view a copy of this license, visit <http://creativecommons.org/licenses/by/4.0/>