

## Stress Induced in the Periodontal Ligament under Orthodontic Loading (Part I): A Finite Element Method Study Using Linear Analysis

M Hemanth<sup>1</sup>, Shilpi deoli<sup>2</sup>, H P Raghuv<sup>3</sup>, M S Rani<sup>4</sup>, Chatura Hegde<sup>5</sup>, B Vedavathi<sup>6</sup>

### Contributors:

<sup>1</sup>Professor and Head, Department of Orthodontics and Dentofacial Orthopedics, Dayananda Sagar College of Dental Sciences, Bengaluru, Karnataka, India; <sup>2</sup>Consultant Orthodontist, Bengaluru, Karnataka, India; <sup>3</sup>Professor and Head, Department Oral and Maxillofacial Surgery, Dayananda Sagar College of Dental Sciences, Bengaluru, Karnataka, India; <sup>4</sup>Professor and Head, Department of Orthodontics and Dentofacial Orthopedics, V S Dental College, Bengaluru, Karnataka, India; <sup>5</sup>Reader, Department of Orthodontics and Dentofacial Orthopedics, Dayananda Sagar College of Dental Sciences, Bengaluru, Karnataka, India; <sup>6</sup>Reader, Department of Conservative Dentistry and Endodontics, Dayananda Sagar College of Dental Sciences, Bengaluru, Karnataka, India.

### Correspondence:

Dr. Hemanth M. Department of Orthodontics and Dentofacial Orthopedics, Dayananda Sagar College of Dental Sciences, Bengaluru, Karnataka, India. Email: drhemanth@yahoo.com

### How to cite the article:

Hemanth M, Shilpi, Raghuv<sup>3</sup>, Rani MS, Hegde C, Vedavathi B. Stress induced in the periodontal ligament under orthodontic loading (Part I): A finite element method study using linear analysis. J Int Oral Health 2015;7(8):129-133.

### Abstract:

**Background:** Orthodontic tooth movement is a complex procedure that occurs due to various biomechanical changes in the periodontium. Optimal orthodontic forces yield maximum tooth movement whereas if the forces fall beyond the optimal threshold it can cause deleterious effects. Among various types of tooth movements intrusion and lingual root torque are associated with causing root resorption, especially with the incisors. Therefore in this study, the stress patterns in the periodontal ligament (PDL) were evaluated with intrusion and lingual root torque using finite element method (FEM).

**Materials and Methods:** A three-dimensional (3D) FEM model of the maxillary incisors was generated using SOLIDWORKS modeling software. Stresses in the PDL were evaluated with intrusive and lingual root torque movements by a 3D FEM using ANSYS software using linear stress analysis.

**Results:** It was observed that with the application of intrusive load compressive stresses were distributed at the apex whereas tensile stress was seen at the cervical margin. With the application of lingual root torque maximum compressive stress was distributed at the apex and tensile stress was distributed throughout the PDL.

**Conclusion:** For intrusive and lingual root torque movements stress values over the PDL was within the range of optimal stress value as proposed by Lee, with a given force system by Proffit as optimum forces for orthodontic tooth movement using linear properties.

**Key Words:** Finite element method, intrusion, linear analysis, lingual root torque, optimum force

### Introduction

Orthodontic tooth movement is a complex procedure that occurs due to various biomechanical changes in the periodontium. Proffit *et al.* stated that “tooth movement is primarily a periodontal ligament (PDL) phenomenon.”<sup>1</sup> Various clinical and laboratory studies have attempted to relate the forces applied to the tooth with the quality and speed of the tooth movement produced.<sup>2-4</sup> The finite element method (FEM) is the most suitable means of analysis, because of its ability to handle various shapes and materials of non-homogenous nature. Incisor intrusion and lingual root torque have been known to cause deleterious effects to teeth such as root resorption. According to Proffit *et al.*, the optimum force for intrusion is 10-20 g and for root movement it is 50-100 g.<sup>1</sup> Intrusive, as well as torquing forces are damaging to the root surfaces, as substantial force is required to torque the apex of the maxillary central incisor lingually. These torquing forces are concentrated at a small area around the apex which is resorption sensitive.<sup>5</sup> Therefore, the purpose of this study is to assess the stresses in PDL and to evaluate the risk of root resorption on the application of intrusive and torque movements using three-dimensional (3D) FEM.

### Aims and objectives

1. To evaluate the distribution of stress pattern in PDL on application of orthodontic load (vertical intrusive force and lingual root torque) on maxillary central incisors with a 3D finite element analysis using linear properties
2. To determine the optimal forces for intrusive and lingual root torque movements in relation to previous clinical, laboratory and histological studies.

### Materials and Methods

In this study a 3D finite element model of a maxillary central incisor was created and used to calculate the stress in the PDL and evaluate the risk of root resorption by application of intrusive and torque movements by a 3D FEM and compare these stresses in the PDL using linear analysis.

### Computational facilities used for the study

**Hardware:** A PC workstation having an Intel Core DUO processor with 8 GB RAM, 500 GB secondary storage and graphic accelerator were used for the study.

**Software:** The design program: SOLIDWORKS release 2012; 3D modeling software, and FEA program: ANSYS workbench was used for this study.

**Steps involved in the generation of finite element model**

1. Construction of a geometric model
2. Conversion of the geometric model to a finite element model
3. Material property data representation
4. Defining the boundary condition
5. Loading configuration
6. Solving the system of linear algebraic equation
7. Interpretation of the results.

*Construction of a geometric model*

The purpose of the geometric modeling phase is to represent a geometry in terms of points (grids), line surfaces (patches), and volume (hyper patches). In this study, the analytical model incorporating maxillary central incisor along with PDL, cortical and compact bone were developed according to dimensions and morphology found in a standard textbook of Dental Anatomy, Physiology, and Occlusion by Wheeler’s.<sup>6</sup> PDL was simulated as a 0.2 mm thick ring around the model of the tooth and cortical bone at 0.5 mm thick (Figure 1a).<sup>7</sup> With software SOLIDWORKS surfaces were generated and this data was exported in Initial Graphics Exchange Specification (IGES) format to ANSYS workbench.

*Conversion of geometric model to finite element model*

This geometric model in IGES format was imported into Macmesh. A finite element model is created using discretization technique. The finite element model approximately consisted of 1,48,097 tetrahedral elements 2,39,666 nodes and 3 degrees of freedom (Figure 1b).

*Material property data representation*

Each structure was then assigned a specific material property. The different structures in the finite element model are tooth, PDL, cortical bone, and cancellous bone. The material properties used in this study have been taken from finite element studies previously conducted.<sup>8</sup> These material properties were defined as linear and isotropic for linear analysis (Table 1).<sup>9</sup>

*Defining the boundary condition*

The boundary condition, in the finite element model was defined at all the peripheral nodes of the bone with three degree of movement in all directions. Boundary conditions were assigned to the nodes surrounding the outermost layers of the tooth, roots and alveolar bone. The geometry of the tooth root and of the alveolus has to be kept constant during the movement.

*Application of forces*

The loading configuration was designed to simulate conventional orthodontic tooth movement.

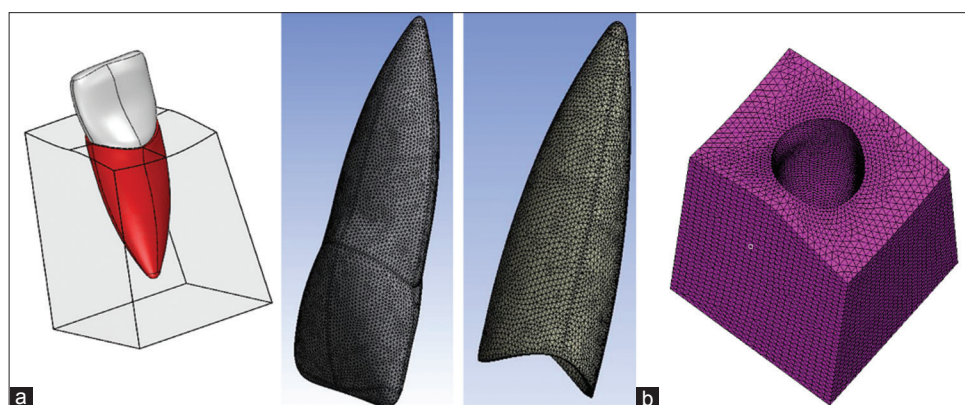
Application of forces in this study was the same as used previously by Puente *et al.* and Rudolph *et al.*<sup>10,11</sup> They were also within the range of optimum forces for orthodontic tooth movement proposed by Proffit *et al.*<sup>1</sup> Intrusion and lingual root torque were applied at various points of the crown surface. Intrusion was modeled by applying 20 g of force directed along the long axis of the tooth (Figure 2a). To obtain lingual root torque, it was necessary to apply a couple, to create a moment (the moment of a couple or  $M_c$ ) equal in magnitude and opposite in direction to the original movement. Therefore, 15 N/mm of lingual root torque was applied (Figure 2b).

*Solving the system of linear algebraic equations*

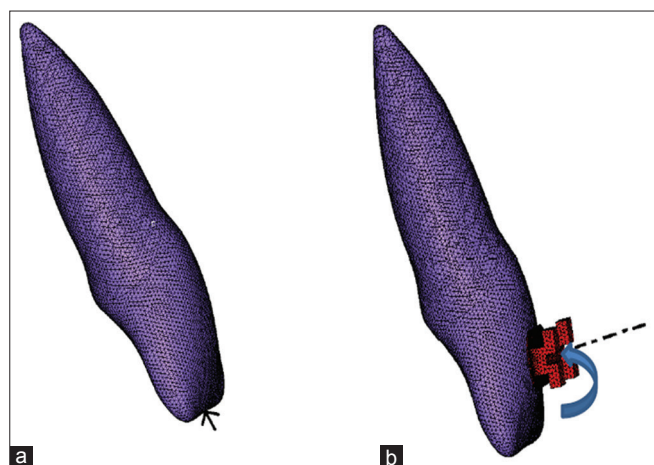
The sequential application of the above steps leads to a system of algebraic equations where the nodal displacements are unknown. These equations are solved by frontal solver technique present in the ANSYS workbench software.

Table 1: Linear material properties used in FEM.		
Material	Young’s modulus (N/mm <sup>2</sup> )	Poisson’s ratio
Enamel	$8.41 \times 10^4$	0.33
Peridontal ligament	$6.90 \times 10^{-1}$	0.45
Cancellous bone	$1.37 \times 10^4$	0.3
Cortical bone	$3.45 \times 10^5$	0.3

FEM: Finite element method



**Figure 1:** (a) Geometric model of maxillary central incisor and supporting structures in SOLIDWORKS software, (b) model showing elements and nodes distribution (1,48,097 elements and 2,39,666 nodes).



**Figure 2:** (a) Load application along the long axis of the tooth, (b) load application for lingual root torque.

## Results

The forces were applied on the maxillary central incisor for intrusive and lingual root torque movements, and the equations were solved with linear properties by ANSYS workbench software and sequentially the stress patterns produced in PDL were analyzed.

The results obtained were divided into the following;

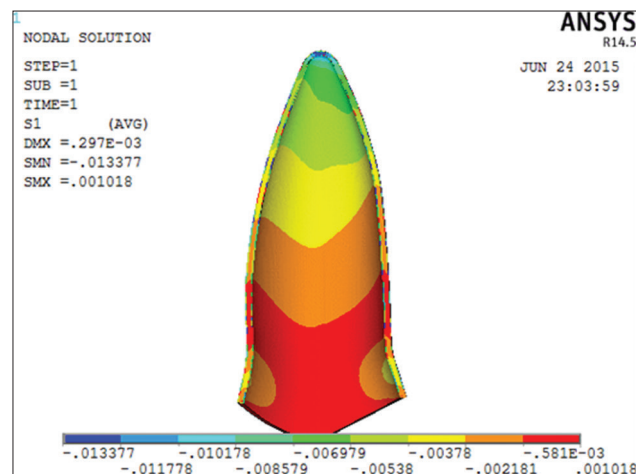
1. Application of intrusive force of 0.20 N using linear properties
2. Application of intrusive force of 0.30 N using linear properties
3. Application of lingual root torque of 0.88 N/mm using linear properties
4. Application of lingual root torque of 1.00 N/mm using linear properties.

### *Application of intrusive force of 0.20 N using linear properties*

When 0.20 N of intrusive forces were applied along the long axis of the tooth it produced minimum compressive stress (denoted as minus) as  $-0.01337 \text{ N/mm}^2$  at the apex of the PDL and the maximum tensile stress at the cervical margin was  $0.001018 \text{ N/mm}^2$  (Figure 3). Since in this case the compressive stresses were lesser than the range given by Lee<sup>12</sup> ( $0.015\text{-}0.026 \text{ N/mm}^2$ ). Therefore iteration was done, and the force level was increased to 30 g.

### *Application of intrusive force of 0.30 N using linear properties*

When 0.30 N of intrusive forces were applied along the long axis of the tooth it produced minimum compressive stress of  $-0.02006 \text{ N/mm}^2$  at the apex of the PDL and the maximum tensile stress was  $0.001528 \text{ N/mm}^2$  at the cervical margin (Figure 4). In this case, it was noted that the stress was in the range of optimal stress range provided by Lee.<sup>12</sup>



**Figure 3:** Distribution of principle stress in periodontal ligament on the application of the intrusive force of 0.20 N using linear properties.

### *Application of lingual root torque of 0.88 N using linear properties*

When 0.88 N force with 15 N/mm moment load was applied using linear properties, it produced minimum compressive stress as  $-0.0144 \text{ N/mm}^2$  and the maximum tensile stress was  $0.016123 \text{ N/mm}^2$ . This produced a lingual root torque (Figure 5). Here, the compressive stresses were lesser than the optimal stress range, hence iterations were done till 1.0 N.

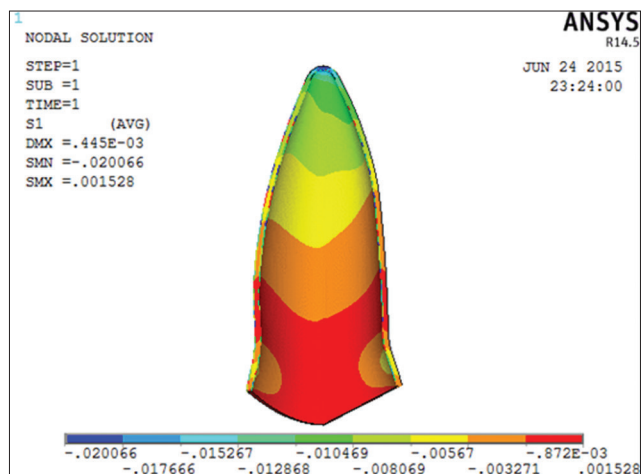
### *Application of lingual root torque of 1.0 N using linear properties*

After application of 1.0 N of lingual root torque the compressive and the tensile stresses were  $-0.01646 \text{ N/mm}^2$  and  $0.01832 \text{ N/mm}^2$  respectively (Figure 6). Here, the compressive stresses were within the optimal stress range given by Lee.<sup>12</sup>

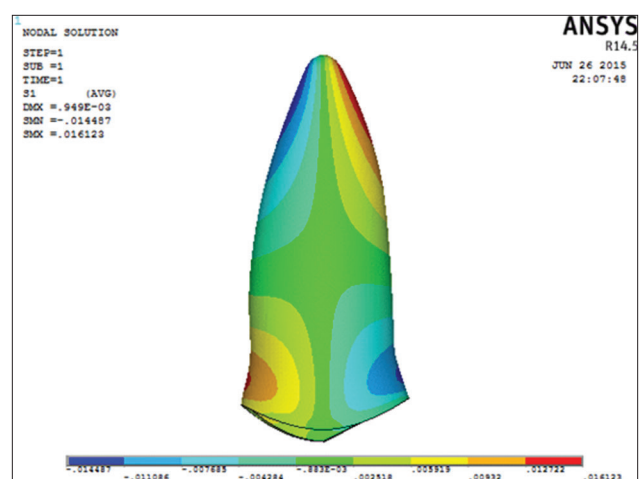
## Discussion

This study investigated the magnitude and stress pattern in the PDL for intrusion and lingual root torque by means of the FEM. Because of the importance of the distribution of the stress in the PDL, in this study, we focused on analysis of the biomechanical characteristics of the changes in the PDL. Clinical studies report a slight loss of periodontal attachment in adolescents and adults during treatment with fixed orthodontic appliances.<sup>6,13,14</sup> Using a FEM model, the present study quantifies the stresses on PDL with intrusion and lingual root torque. This study shows that intrusive forces and lingual root torque produces stress at the root apex. Similar results were found in previous investigations for vertical tooth movement that used FEM.<sup>11,15,16</sup>

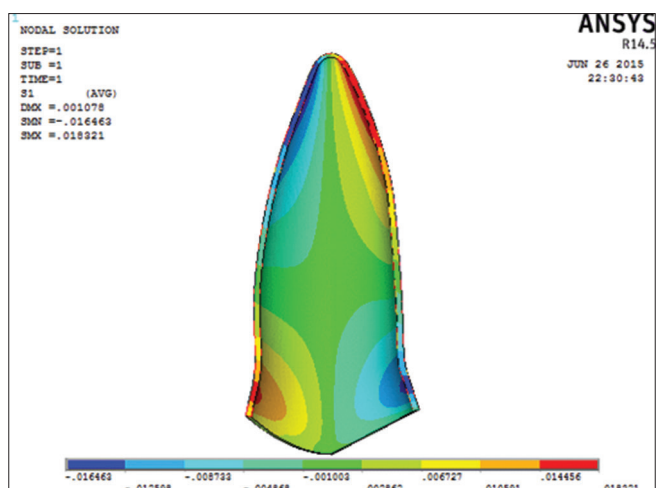
In clinical observation, it might be expected that for intrusive forces only compressive stresses are seen over the whole PDL. However, in our study it was seen that when the intrusive force of 0.20 N was applied using linear properties, the compressive stress was seen only at the apex whereas tensile stresses were distributed along the cervical margin. The stress profiles in our



**Figure 4:** Distribution of principle stress in periodontal ligament on the application of the intrusive force of 0.30 N using linear properties.



**Figure 5:** Distribution of principle stress in periodontal ligament on the application of lingual root torque of 0.88 N/mm using linear properties.



**Figure 6:** Distribution of principle stress in periodontal ligament on application of lingual root torque of 1.00 N/mm using linear properties.

study were similar to other finite element studies by Rudolph *et al.* and Wilson *et al.*<sup>11,16</sup>

For 0.20 N of intrusive forces applied along the long axis of the tooth, the maximum compressive stress of  $-0.0133 \text{ N/mm}^2$  were seen at the apex of the PDL and the maximum tensile stress of  $0.0010 \text{ N/mm}^2$  at the cervical margin (Figure 3). In this situation, the stresses were lesser than the optimal stress range provided by Lee.<sup>12</sup>

When 0.30 N of intrusive forces were applied along the long axis of the tooth it produced minimum compressive stress of  $-0.02006 \text{ N/mm}^2$  at the apex of the PDL and the maximum tensile stress of  $0.0015 \text{ N/mm}^2$  at the cervical margin (Figure 4). Therefore in this case, the stress was in the range of optimal stress range provided by Lee.<sup>12</sup>

In the present study intrusive stresses produced with the application of optimal forces proposed by Proffit *et al.* were below the optimal stress values suggested by Lee.<sup>12</sup> However, stress values found were higher in comparison to the results of the study by Rudolph *et al.* ( $-0.0017 \text{ N/mm}^2$ ) although in both the studies the magnitude of force applied was the same.<sup>11</sup> The high stresses produced in the present study were due to the forces being applied along the long axis of the tooth as against to forces being applied parallel to the long axis by Rudolph *et al.*, with a diminution in stress on the opposite side of the tooth being observed.<sup>11</sup>

The stress values were not similar to those found by Wilson *et al.*<sup>16</sup> This difference may be attributed to the difference in type of tooth (canine tooth being used instead of maxillary central incisor), the magnitude of force applied (1 N of force was applied) and also the direction of application of force was parallel to the long axis of the canine tooth.

For lingual torque of 0.88 N, the highest pressures and the largest high-pressure areas were observed at the apex and buccal part of the PDL near the alveolar crest which is in agreement with the study by Hohmann *et al.*<sup>17</sup> Simulations performed by Dorow and Sander of a single-rooted mandibular first premolar with a lingual torque also showed that increased hydrostatic pressure can be observed at the linguoapical and the buccocervical parts of the PDL.<sup>18</sup>

Studies show that the extent of root resorption depends on the applied force system.<sup>1,17</sup> Faltin stated that root resorption can occur if capillary blood pressure is exceeded.<sup>19</sup> In the literature, the range of capillary blood pressure is reported to be between 15 and 35 mm Hg (equivalent to  $0.0020\text{-}0.0047 \text{ MPa}$ ).<sup>20</sup>

When 0.88 N moment load was applied using linear properties, it produced compressive stress of  $0.0144 \text{ N/mm}^2$  and maximum tensile stress of  $0.0161 \text{ N/mm}^2$ . In the present

study, the maximum compressive stresses produced by lingual root torque produced with the application of optimal forces proposed by Proffit *et al.*<sup>1</sup> were lesser than the range of optimal stress values suggested by Lee.<sup>12</sup>

However, after application of 1.0 N of lingual root torque the compressive and the tensile stresses were  $-0.0164 \text{ N/mm}^2$  and  $0.0183 \text{ N/mm}^2$  respectively (Figure 6). This indicated that the stresses were within the range of optimal stress range given by Lee.<sup>12</sup> However, the stresses produced here higher than the range given by Schwarz which suggests that lingual root torque produces a higher risk of root resorption.<sup>19</sup>

### Conclusion

Stresses in the PDL were evaluated with intrusive and lingual root torque movements by a 3D FEM in a maxillary central incisor model using linear analysis. It was concluded that for the stresses in the PDL to be in the optimum limit as suggested by Lee the intrusive force load should not exceed beyond 0.30 N which is not in the optimal force limit as suggested by Proffit *et al.* for intrusion i.e. (10-20 g) and that for lingual root torque the load must not exceed beyond 1.0 N as loads in excess of these would be detrimental to the health of the supporting tissues.

The question of optimal force magnitude remains an important enigma to an orthodontist. For the results of this study, a first approximation of stress should be evaluated more from relative numbers rather than absolute values. In this way, the results are useful in suggesting the required forces needed for different types of tooth movement.

FEM is an approximation study. The accuracy of the analysis is dependent on modeling the structure and material characterization as closely as possible to the actual. PDL is nonlinear and anisotropic in nature. The viscous nature of the PDL comes from the tissue fluid and elastic behavior from the fibers. The anisotropy results from orientation of the fibers. By assigning nonlinear and anisotropic properties to PDL, one can get as close to the clinical situation as possible for which further, research is needed in this area.

### References

1. Proffit WR, Fields HW, Ackerman JL, Sinclair PM, Thomas PM, Tulloch JF. Contemporary Orthodontics, 2<sup>nd</sup> ed. Baltimore: Mosby-Year Book; 1993.
2. Reitan K. Effects of force magnitude and direction of tooth movement on different alveolar bone types. Angle Orthod 1964;34:244-55.
3. Storey E, Smith R. Force in orthodontics and its relation to tooth movement. Aust J Dent 1952;56:11-8.
4. Lee K, Ryu Y, Park Y, Rudolph DJ. A study of holographic interferometry on the initial reaction of maxillofacial complex during protraction. Am J Orthod Dentofacial Orthop 1997;111:623-32.
5. Parker PJ, Harris EF. Directions of orthodontic tooth movements associated with external apical root resorption of the maxillary central incisor. Am J Orthod Dentofacial Orthop 1998;114(6):677-83.
6. Nelson SJ, Ash MM Jr. Wheelers Dental Anatomy, Physiology and Occlusion, 7<sup>th</sup> ed. USA: W.B Saunders Co.; 1993.
7. Dorow C. Numerical stimulation and experimental study of tooth movement, [Dissertation]. Ulm: Universita; 2004.
8. McGuinness N, Wilson AN, Jones M, Middleton J, Robertson NR. Stresses induced by edgewise appliances in the periodontal ligament – a finite element study. Angle Orthod 1992;62(1):15-22.
9. Cobo J, Argüelles J, Puente M, Vijande M. Dentoalveolar stress from bodily tooth movement at different levels of bone loss. Am J Orthod Dentofacial Orthop 1996;110(3):256-62.
10. Puente MI, Galbán L, Cobo JM. Initial stress differences between tipping and torque movements. A three-dimensional finite element analysis. Eur J Orthod 1996;18(4):329-39.
11. Rudolph DJ, Willes PMG, Sameshima GT. A finite element model of apical force distribution from orthodontic tooth movement. Angle Orthod 2001;71(2):127-31.
12. Lee BW. Relationship between tooth-movement rate and estimated pressure applied. J Dent Res 1965;44(5):1053.
13. Corn H, Marks MH, (Editors). Basic biological concepts associated with adult orthodontics. In: Atlas of Adult Orthodontics, Philadelphia: Lea & Febiger; 1989. p. 7-56.
14. Boyd RL, Leggott PJ, Qinn RS, Eakle WS, Chambers D. Periodontal implications of orthodontic treatment in adults with reduced or normal periodontal tissues versus those of adolescents. Am J Orthod 1989;96:191-9.
15. Graber T, Vanarsdall R, (Editors). Orthodontics: Current Principles and Techniques, 3<sup>rd</sup> ed. St. Louis: Mosby; 2000.
16. Wilson AN, Middleton J, Jones ML, McGuinness NJ. The finite element analysis of stress in the periodontal ligament when subject to vertical orthodontic forces. Br J Orthod 1994;21(2):161-7.
17. Hohmann A, Wolfram U, Geiger M, Boryor A, Sander C, Faltin R, *et al.* Periodontal ligament hydrostatic pressure with areas of root resorption after application of a continuous torque moment. Angle Orthod 2007;77(4):653-9.
18. Dorow C, Sander FG. Development of a model for the simulation of orthodontic load on lower first premolars using the finite element method. J Orofac Orthop 2005;66(3):208-18.
19. Faltin RM, Arana-Chavez VE, Faltin K, Sander FG, Wichelhaus A. Root resorption in upper first premolars after application of continuous intrusive forces. Intra-individual study. J Orofac Orthop 1998;59(4):208-19.
20. Chan E, Darendeliler MA. Physical properties of root cementum: Part 5. Volumetric analysis of root resorption craters after application of light and heavy orthodontic forces. Am J Orthod Dentofacial Orthop 2005;127:186-95.