



Susceptibility Genes for Multiple Sclerosis Identified in a Gene-Based Genome-Wide Association Study

Xiang Lin^{a,b,c}

Fei-Yan Deng^{a,b}

Xin Lu^{a,b}

Shu-Feng Lei^{a,b}

^aCenter for Genetic Epidemiology and Genomics,

^bJiangsu Key Laboratory of Preventive and Translational Medicine for Geriatric Diseases, School of Public Health, Soochow University, Suzhou, Jiangsu, People's Republic of China

^cDepartment of Tuberculosis Control, Ningbo Municipal Center for Disease Control & Prevention, Ningbo, Zhejiang, People's Republic of China

Background and Purpose Multiple sclerosis (MS) is a demyelinating and inflammatory disease of the central nervous system. The aim of this study was to identify more genes associated with MS.

Methods Based on the publicly available data of the single-nucleotide polymorphism-based genome-wide association study (GWAS) from the database of Genotypes and Phenotypes, we conducted a powerful gene-based GWAS in an initial sample with 931 family trios, and a replication study sample with 978 cases and 883 controls. For interesting genes, gene expression in MS-related cells between MS cases and controls was examined by using publicly available datasets.

Results A total of 58 genes was identified, including 20 “novel” genes significantly associated with MS ($p < 1.40 \times 10^{-4}$). In the replication study, 44 of the 58 identified genes had been genotyped and 35 replicated the association. In the gene-expression study, 21 of the 58 identified genes exhibited differential expressions in MS-related cells. Thus, 15 novel genes were supported by replicated association and/or differential expression. In particular, four of the novel genes, those encoding myelin oligodendrocyte glycoprotein (*MOG*), coiled-coil alpha-helical rod protein 1 (*CCHCR1*), human leukocyte antigen complex group 22 (*HCG22*), and major histocompatibility complex, class II, DM alpha (*HLA-DMA*), were supported by the evidence of both.

Conclusions The results of this study emphasize the high power of gene-based GWAS in detecting the susceptibility genes of MS. The novel genes identified herein may provide new insights into the molecular genetic mechanisms underlying MS.

Key Words multiple sclerosis, gene-based GWAS, gene expression, human leukocyte antigen.

INTRODUCTION

Multiple sclerosis (MS) is a chronic demyelinating and inflammatory disease of the the central nervous system (CNS).^{1,2} Genetic factors contribute markedly to the susceptibility to MS, since the children of affected parents have a tenfold higher risk of developing the condition than the general population.³

It has been demonstrated that the human leukocyte antigen (HLA) gene is closely related to MS susceptibility. The HLA gene contains a great many genes (HLA class I, II, and III) residing on chromosome 6, which is related to immune system function in humans. The proteins encoded by the HLA class I and II regions are involved in antigen processing and presentation, and play a major role in autoimmune events. MS is believed to be an immune-mediated disorder that leads to recurrent immune attacks on the CNS.⁴

Recent genome-wide association studies (GWASs) have identified many loci with modest effects.⁵⁻⁷ However, previous GWASs used single-nucleotide polymorphisms (SNPs) as a basic analysis unit,^{5,6,8,9} and adopted stringent thresholds of significance to control for the

© This is an Open Access article distributed under the terms of the Creative Commons Attribution Non-Commercial License (<http://creativecommons.org/licenses/by-nc/3.0>) which permits unrestricted non-commercial use, distribution, and reproduction in any medium, provided the original work is properly cited.

Received October 13, 2014

Revised November 22, 2014

Accepted November 26, 2014

Correspondence

Shu-Feng Lei, PhD

Center for Genetic Epidemiology and Genomics, School of Public Health, Soochow University, No. 199, Ren'ai Road, Suzhou Industrial Park, Suzhou 215123, People's Republic of China

Tel +86-512-65883357

Fax +86-512-65883357

E-mail leis@suda.edu.cn

false-positive rate. This approach resulted in a large number of SNPs with potential effects being filtered out and ignored.

The gene-based GWAS study strategy, involving analyzing all variants within a putative gene, has proved to be more powerful than regular single-SNP-based GWASs for detecting disease susceptibility genes.¹⁰⁻¹² To detect “novel” genes associated with MS, we performed a gene-based GWAS using the Knowledge-based mining system for Genome-wide Genetic studies (KGG; <http://statgenpro.psychiatry.hku.hk/limx/kgg/index.html>)¹⁰ in an initial study sample containing 931 family trios.⁸ We also performed other functional analyses to supplement the evidence regarding the relevance of the novel genes to MS.

METHODS

Samples

The initial GWAS sample included a total of 931 family trios, each of which consisted of an affected MS child and both parents. The replication sample contained 978 cases and 883 controls. The MS patient was diagnosed according to the McDonald criteria.¹³ Both the initial and replication study samples included all clinical subtypes and partial clinically isolated syndromes. However, the replication study had the priority to include patients with the relapsing onset form of MS. Institutional Review Board was exempted because this study used public available database of Genotypes and Phenotypes (dbGaP) which does not involve any personal information. The study samples, genotyping, quality control, and SNP exclusion criteria have been described previously.^{8,9}

Gene-based GWAS

The gene-based GWAS and replication analysis were based on the probability values generated in previous genome-wide SNP-based association studies and downloaded from the dbGaP (<http://www.ncbi.nlm.nih.gov/gap/?term=multiple+sclerosis>, accession number: phs000139 and phs000171). We used the Gene-Based Association Test Using Extended Simes Procedure analysis method modeled in KGG 2.5 (<http://statgenpro.psychiatry.hku.hk/limx/kgg/index.html>).¹⁰ The SNPs, ranging from the upstream 5 kb at the 5' end to the downstream 5 kb at the 3' end, were assigned to one gene. In total, 48% of SNPs across the whole genome were assigned to genes.

Differential expression analysis for MS-associated genes

We downloaded four gene-expression data sets from the Gene Expression Omnibus (GEO) of the National Center for Biotechnology Information (<http://www.ncbi.nlm.nih.gov/geo>; GSE21942, GSE27694, GSE16461, and GSE52139). A

case-control study design was used to investigate all four data sets, and multiple cell types were investigated, including peripheral blood mononuclear cells (PBMCs), CD34+ hematopoietic progenitor cells (HPCs), CD8+ T lymphocytes, and spinal cord. The study design data analysis are described in detail elsewhere.¹⁴⁻¹⁷ Differentially expressed genes between MS cases and controls were identified by comparing mean gene-expression signals in MS cases versus controls and analyzing the findings using *t*-tests.

Protein-protein interaction network

MS-associated gene interactions and associations were detected by protein-protein interaction analysis, conducted by searching the Search Tool for the Retrieval of Interacting Genes/Proteins (STRING) database (<http://string-db.org/>). The STRING database integrates known and predicted associations derived from a genomic context, high-throughput experiments, coexpression, and previous knowledge (text mining).¹⁸

Functional annotation clustering analysis

The probability of the identified MS-associated genes clustering in a Gene Ontology (GO) term or a particular biological pathway as defined by the GO project and Kyoto Encyclopedia of Genes and Genomes database was tested by performing a functional annotation clustering analysis using the Database for Annotation, Visualization and Integrated Discovery integrated database query tools (<http://david.abcc.ncifcrf.gov/>).^{19,20} The enrichment was measured quantitatively using Fisher's exact test, and the Bonferroni method²¹ was adopted to correct for multiple testing.

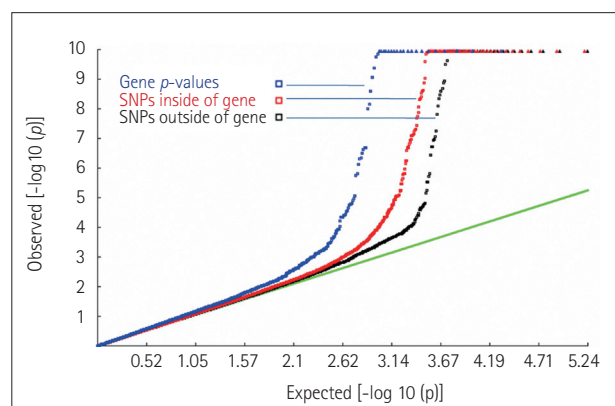


Fig. 1. Quantile-quantile plots of the association results for the initial genome scan. The tail of the distribution of gene-based probability values deviated more significantly than those of SNPs inside or outside of the gene, which suggests that the power was higher for a gene-based association analysis than a single SNP-based GWAS in detecting associations. GWAS: genome-wide association study, SNP: single-nucleotide polymorphism.

RESULTS

Quantile-quantile plots of the association results for the original genome scan and the present gene-based GWAS are shown in Fig. 1, in which probability values (shown as $-\log_{10}$ values) for all 20,761 genes and all SNPs are plotted against the expected null distribution. The tail of the distribution of gene-based probability values deviated more significantly than those of SNPs inside or outside of the gene. The distribution of the probability values for the present gene-based GWAS is shown in Fig. 2.

Based on a false discovery rate threshold of 1.40×10^{-4} , 58 genes were found to be significantly associated with MS in the initial gene-based GWAS (Supplementary Table 1 in the online-only Data Supplement). Among those 58 genes, 53 were located in the HLA region on chromosome 6. In con-

trast, according to the raw SNP-based probability values, 75 SNPs in 31 genes were found to be significantly associated with MS (threshold of $p < 1.49 \times 10^{-7}$). Therefore, the present gene-based GWAS detected 27 novel genes that had not previously been detected in the original SNP-based GWAS. After searching the Phenotype-Genotype Integrator (www.ncbi.nlm.nih.gov/gap/phegeni/), a database that archives previous association results, we found that 7 of the 27 genes had already been reported for significant associations (threshold of $p < 5.0 \times 10^{-5}$). Therefore, among the 58 MS-associated genes that we identified, 20 were considered as novel MS candidate genes. Of note, five of these novel genes were located outside the HLA region.

Among the total 58 identified MS-associated genes, 44 genes with genotype data in the replication sample were subjected to further association tests, which revealed that 35 of

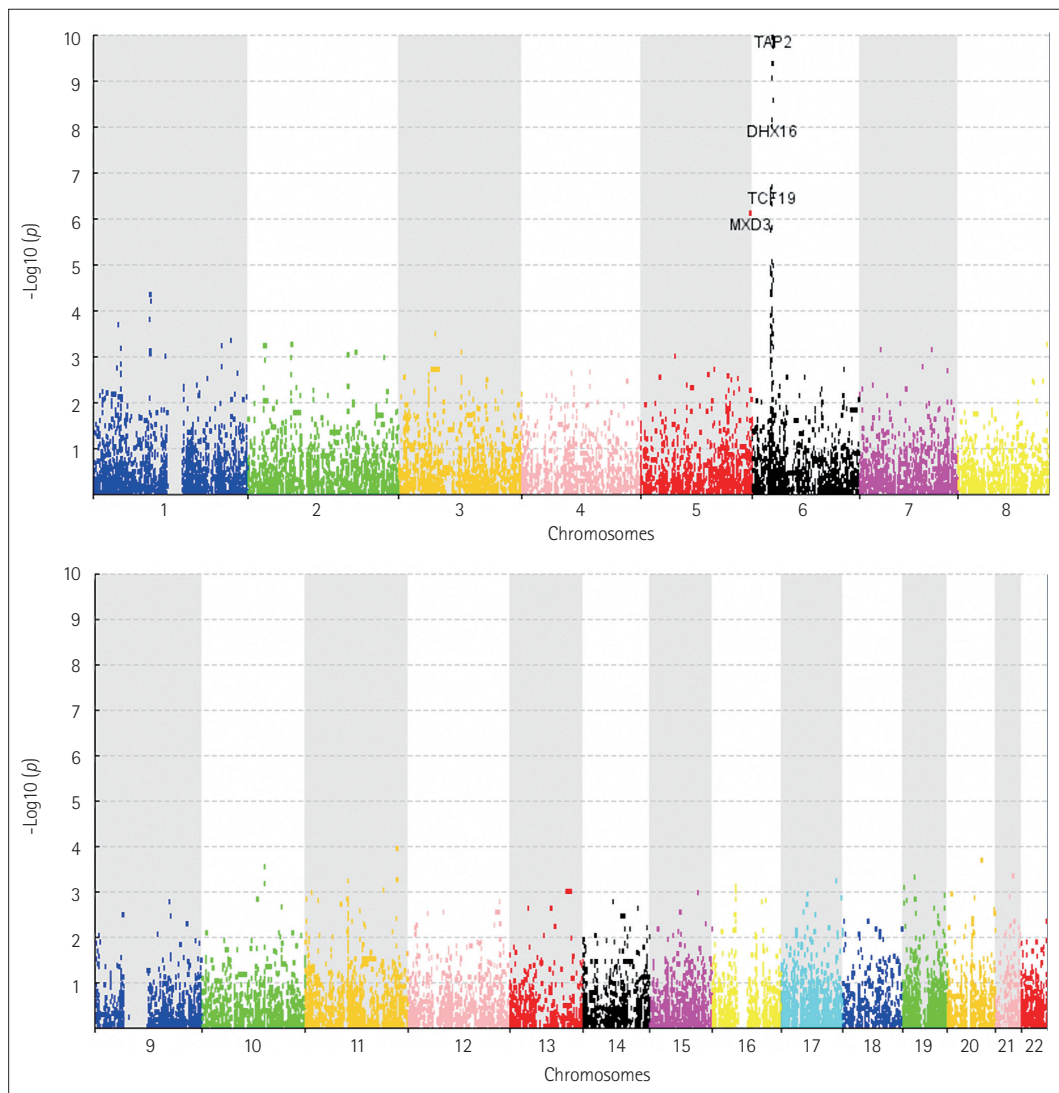


Fig. 2. Manhattan plot of gene probability values on chromosomes. Most of the genes significantly associated with MS are mapped to the HLA region (chromosome 6). HLA: human leukocyte antigen, MS: multiple sclerosis.

Table 1. MS-associated genes with significantly differential expressions in MS-related cells/tissue

Sample	S1	S2	S3	S4				
Target cells/tissue	PBMC	CD34+ HPC	CD8+ T lymphocytes	Spinal cord				
Sample size	12:15	8:5	4:4	8:8				
Platform	[HG-U133_Plus_2] Affymetrix Human Genome U133 Plus 2.0 Array	Agilent-014850 Whole Human Genome Microarray 4x44K G4112F	[HG-U133_Plus_2] Affymetrix Human Genome U133 Plus 2.0 Array	[HG-U133_Plus_2] Affymetrix Human Genome U133 Plus 2.0 Array				
PMID	22021740	22252466	21216829	24910450				
GSE No.	GSE21942	GSE27694	GSE16461	GSE52139				
Gene	Probe ID*	t-test, p	Gene	Probe ID*	t-test, p	Gene	Probe ID*	t-test, p
<i>EHMT2</i>	207484_s_at	4.30×10 ⁻³¹	<i>EHMT2</i>	A_24_P801451	4.50×10 ⁻²	-	-	-
<i>HLA-C</i>	211799_x_at	6.15×10 ⁻³	<i>HLA-C</i>	A_24_P298409	2.74×10 ⁻²	-	-	-
<i>RDBP</i>	209219_at	2.01×10 ⁻²	<i>RDBP</i>	A_23_P122545	3.70×10 ⁻²	-	-	-
<i>MOG</i>	214650_x_at	2.12×10 ⁻²	-	-	-	<i>MOG</i>	214650_x_at	3.65×10 ⁻²
<i>BRD2</i>	208685_x_at	5.65×10 ⁻⁶	<i>POU5F1</i>	A_24_P144601	8.28×10 ⁻³	<i>POU2F3</i>	215355_at	-
<i>HLA-DOB</i>	205671_s_at	1.63×10 ⁻⁵	<i>LOC100294145</i>	A_32_P97739	4.21×10 ⁻²	<i>HLA-DMB</i>	203932_at	-
<i>HLA-DRA</i>	208894_at	5.82×10 ⁻⁵	<i>TMXB</i>	A_24_P911362	4.45×10 ⁻²	-	-	-
<i>HLA-DMA</i>	217478_s_at	8.62×10 ⁻⁴	<i>PSORS1C1</i>	A_24_P24848	4.85×10 ⁻²	-	-	-
<i>TAP2</i>	204770_at	3.35×10 ⁻³	-	-	-	-	-	-
<i>AIF1</i>	209901_x_at	2.04×10 ⁻²	-	-	-	-	-	-
<i>HLA-F</i>	204806_x_at	2.64×10 ⁻²	-	-	-	-	-	-
<i>HLA-DQA1</i>	236203_at	3.51×10 ⁻²	-	-	-	-	-	-
<i>HCG22</i>	1560767_at	3.85×10 ⁻²	-	-	-	-	-	-
<i>CCHCR1</i>	37424_at	1.05×10 ⁻²	-	-	-	-	-	-
<i>FAM69A</i>	1556498_at	1.63×10 ⁻²	-	-	-	-	-	-

The ratio listed in the line of "Sample size" is the number of multiple sclerosis (MS) cases compared with that of controls. The genes listed here that are not defined in the main text are major histocompatibility complex, class II, DO beta (*HLA-DOB*), major histocompatibility complex, class II, DR alpha (*HLA-DRA*), POU class 5 homeobox 1 (*POU5F1*), uncharacterized LOC100294145 (*LOC100294145*), tetraspanin XB (*TMXB*), psoriasis susceptibility 1 candidate 1 (*PSORS1C1*), major histocompatibility complex, class II, DM beta (*HLA-DMB*), transporter 2, ATP-binding cassette, sub-family B (*TAP2*), allograft inflammatory factor 1 (*AIF1*), major histocompatibility complex, class I, F (*HLA-F*), major histocompatibility complex, class II, DQ alpha 1 (*HLA-DQA1*), respectively.

*Only the most significant probe is listed, even if more than one probe was detected for a gene.
 GSE No.: Gene Expression Omnibus number, www.ncbi.nlm.nih.gov/geo/, PMID: PubMed unique identifier.

them (80%) were still significantly associated with MS ($p < 0.05$). Furthermore, 21 of these 58 genes, including 8 novel genes, exhibited differential expression in the differential expression analysis (Table 1). Most interestingly, the genes encoding histone-lysine N-methyltransferase, H3 lysine-9 specific 3 (*EHMT2*), major histocompatibility complex, Class I, A (*HLA-C*), and negative elongation factor E (*RDBP*) exhibited significantly differential expressions between cases and controls in both PBMCs and CD34+ HPCs, and the gene encoding myelin oligodendrocyte glycoprotein (*MOG*) in PBMCs, CD8+ T lymphocytes, and spinal cord, simultaneously (Table 1).

The 58 identified MS-associated genes were retrieved from the STRING database. Only 36 genes, including 10 novel genes, were annotated in this database. The genes at the HLA regions were clearly enriched into two clusters: HLA class I and II clusters (Fig. 3). Two novel genes, those encoding major histocompatibility complex, class I, A (*HLA-A*) and major histocompatibility complex, class II, DM alpha (*HLA-DMA*), were involved in HLA-class I and II clusters, respectively. Another four novel genes, *MOG*, and those encoding coiled-coil alpha-helical rod protein 1 (*CCHCR1*), bromodomain-containing protein 2 (*BRD2*), and chromosome 6 open reading frame 15 (*C6orf15*), were directly connected with the HLA clusters (Fig. 3).

Taking both the replication data and gene-expression data together, we found that 15 novel genes were supported by replicated association and/or differential expression (Table 2). Most interestingly, the significance of four genes—*HLA-DMA*, *CCHCR1*, *MOG*, and the gene encoding HLA complex group 22 (*HCG22*)—in MS was supported by both the replication and gene-expression studies. In addition, the significance of two non-HLA genes—those encoding family with sequence similarity 69, member A (*FAM69A*) and POU domain class 2 transcription factor 3 (*POU2F3*)—in MS was supported by evidence of differential expressions in PBMCs and CD8+ T lymphocytes, respectively.

The identified 58 MS-associated genes were found enriched in 54 GO terms, even after Bonferroni correction ($p < 0.05$) (Supplementary Table 2 in the online-only Data Supplement). Most significantly, 12 genes were enriched in “antigen processing and presentation” (GO: 0019882; $p = 271.09 \times 10^{-16}$), and 11 genes were enriched in “MHC protein complex” (GO: 0012611; $p = 1.06 \times 10^{-16}$).

DISCUSSION

Gene-based association analysis is an efficient method for detecting associations between candidate genes and complex diseases, as it combines signals for all variants within a

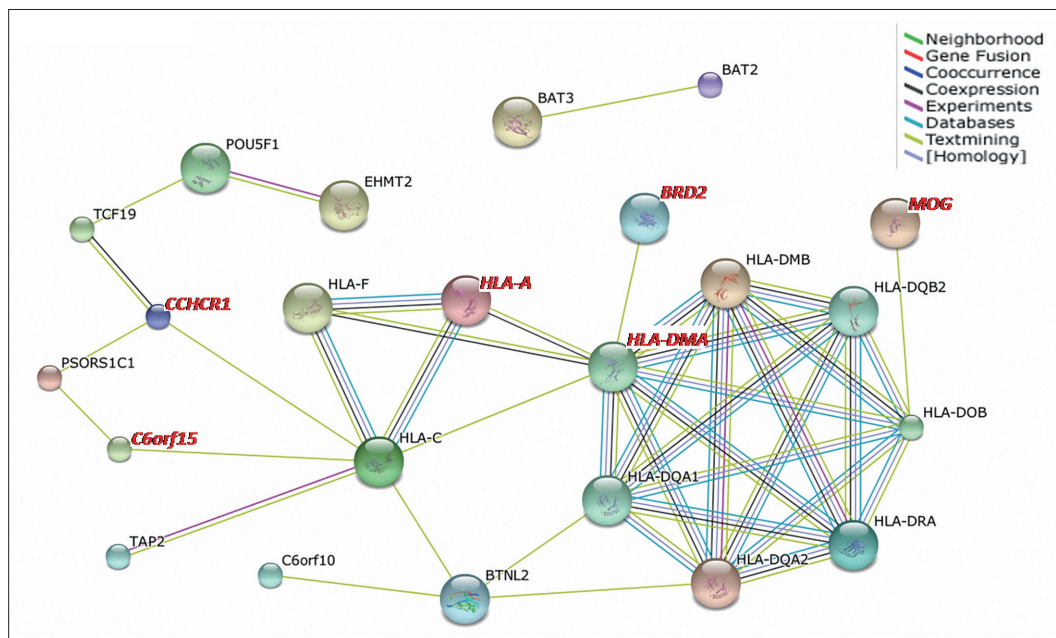


Fig. 3. Protein-protein interactions between MS-associated genes. Only the connected genes are shown. The novel genes are labeled in red. Different line colors represent the types of evidence for the association. HLA class I cluster: major histocompatibility complex, class I, A (*HLA-A*), Major histocompatibility complex, class I, C (*HLA-C*), and major histocompatibility complex, class I, F (*HLA-F*); HLA class II cluster: major histocompatibility complex, class II, DQ alpha 1 (*HLA-DQA1*), major histocompatibility complex, class II, DQ alpha 2 (*HLA-DQA2*), major histocompatibility complex, class II, DQ beta 2 (*HLA-DQB2*), major histocompatibility complex, class II, DR alpha (*HLA-DRA*), major histocompatibility complex, class II, DO beta (*HLA-DOB*), major histocompatibility complex, class II, DM alpha (*HLA-DMA*), and major histocompatibility complex, class II, DM beta (*HLA-DMB*). HLA: human leukocyte antigen, MS: Multiple sclerosis.

Table 2. Fifteen novel MS-associated genes, supported by replication studies and/or expression studies

Gene	Chromosome	Start position	Length	#SNP*	Initial <i>p</i>	Replication <i>p</i>	Differential expression <i>p</i> , sample [†]	
<i>MOG</i>	6	29619758	25391	2	1.21×10 ⁻⁵	5.09×10 ⁻⁴	2.12×10 ⁻²	S1
							3.65×10 ⁻²	S3
							2.92×10 ⁻²	S4
<i>HLA-DMA</i>	6	32911391	14508	2	3.15×10 ⁻⁷	4.08×10 ⁻²	8.62×10 ⁻⁴	S1
<i>CCHCR1</i>	6	31105216	25799	2	4.03×10 ⁻⁵	1.08×10 ⁻³	1.05×10 ⁻²	S1
<i>HCG22</i>	6	31016984	15669	6	1.21×10 ⁻⁴	2.29×10 ⁻²	3.85×10 ⁻²	S1
<i>BRD2</i>	6	32931437	22845	1	1.07×10 ⁻⁵	NS	5.65×10 ⁻⁶	S1
<i>FAM69A</i>	1	93302721	129358	11	4.47×10 ⁻⁵	NA	1.63×10 ⁻²	S1
<i>LOC100294145</i>	6	32856953	19582	3	2.27×10 ⁻⁵	NA	4.21×10 ⁻²	S2
<i>POU2F3</i>	11	120000000	89702	3	1.13×10 ⁻⁴	NS	8.41×10 ⁻³	S3
<i>TRIM26P</i>	6	30201078	13978	2	3.72×10 ⁻⁵	7.80×10 ⁻⁶	NA	NA
<i>HCP5P14</i>	6	29733324	12339	1	1.33×10 ⁻⁴	9.94×10 ⁻⁵	NA	NA
3.8-1.4 (<i>HLA complex group 26</i>)	6	29828692	11172	7	1.58×10 ⁻⁵	1.08×10 ⁻³	NA	NA
<i>C6orf15</i>	6	31074000	11332	3	9.26×10 ⁻⁵	2.22×10 ⁻³	NS	NS
<i>MUC21</i>	6	30946485	16190	4	4.40×10 ⁻⁵	3.42×10 ⁻³	NA	NA
<i>HLA-A</i>	6	29905309	13352	4	1.61×10 ⁻⁵	8.38×10 ⁻³	NS	NS
<i>HLA-F-AS1</i>	6	29689378	32448	7	1.83×10 ⁻⁶	2.52×10 ⁻²	NA	NA

The genes listed here that are not defined in the main text are tripartite motif containing 26 B (*TRIM26P*), HLA complex P5 pseudogene 14 (*HCP5P14*), HLA complex group 26 pseudogene (3.8-1.4), mucin 21, cell surface associated (*MUC21*), HLA-F antisense RNA 1 (*HLA-F-AS1*), respectively.

*Number of SNPs included in the gene with $p < 0.05$. [†]Multiple sclerosis (MS)-related cells/tissue sample used for the differential expression analysis; S1, PBMC; S2, CD34+ HPC; S3, CD8+ T lymphocytes; S4, spinal cord.

NA: not available, NS: not significant.

putative gene. By using this method, several studies have identified new associations between genes and diseases.^{22,23} The present study again highlights the superior power of gene-based association analysis for detecting associations for MS. Specifically, we detected 58 genes significantly associated with MS, including 20 novel genes that were undetected in previous single SNP-based GWASs. Furthermore, associations for 80% of the identified MS-associated genes were replicated.

Most previous association studies have identified only the statistical relevance of genes to MS (at the DNA level), without dissecting the functional mechanisms underlying those associations. In contrast, in the present study we not only established statistical associations between genetic markers and MS at the DNA level, but also performed follow-up differential gene expression analyses and functional annotation clustering analyses as important supplementary methods to analyze the function of causal variants. This supplementary evidence strengthens the likelihood that the eight novel genes identified in this study with significantly differential expressions are directly involved in the pathogenesis of MS.

Recent GWASs have identified a great number of MS-associated genetic loci,^{5,9,24-26} most of which have been mapped to the HLA region. Most of the loci identified in the present study were also located in this region. As we know, the ma-

ajor HLAs are essential elements for immune function. Therefore, our findings also highlight the importance of the autoimmune system in the etiology of MS.

Most interestingly, evidence from association, replication, and differential expression studies strongly supports the significance of the following four genes to MS: *MOG*, *HLA-DMA*, *CCHCR1*, and *HCG22*. Up to now, the biological function of *HCG22* in MS or immunity is unknown. *HLA-DMA* and *CCHCR1* exhibit suggestive associations with rheumatoid arthritis (RA) and psoriasis,²⁷⁻²⁹ respectively, suggesting that both genes are involved in the immune response. The protein encoded by *MOG*, myelin oligodendrocyte glycoprotein (MOG) is a membrane protein expressed on the surface of oligodendrocyte cells and myelin sheaths.³⁰ *MOG* is an important candidate target antigen in MS.³¹⁻³³ Monoclonal antibodies against *MOG* were used to develop an animal model of MS.³⁴ The functions of these genes in MS need further investigation.

In addition, three genes (*POU2F3*, *BRD2*, and *FAM69A*) were expressed differentially in MS-related cells. *POU2F3*, a non-HLA gene (chromosome 11), is associated with melanoma and cervical cancer.^{35,36} *BRD2* is associated with cancer, obesity, type 2 diabetes, RA, and inflammation,³⁷⁻³⁹ and was differentially expressed in the PBMCs of patients with RA ($p = 2.31 \times 10^{-3}$, data sets from GEO; www.ncbi.nlm.nih.gov/geo,

GSE#: GSE15573). The associations with other autoimmune diseases suggested the possible relevance of *BRD2* and *POU2F3* to MS. The specific functions of *FAM69A* in MS are unknown. A previous study found that 21 SNPs located at the GFI-EVI5-RPL5-FAM69A locus were positively associated with MS.⁴⁰ In-depth studies are needed to disclose the functional mechanism of these genes in MS.

It should be noted that since there is strong linkage disequilibrium (LD) at the HLA region, it is reasonable to infer that the significant signals for some of the genetic markers are partially due to their strong LD with true functional variants within the HLA region. Although the supplementary analysis could play a part in analyzing the function of causal variants, it is also necessary to research the functional mechanisms underlying the associations further, especially those between the HLAs and MS.

In conclusion, this gene-based GWAS has identified 20 novel MS-associated genes. The results highlight the advantages of gene-based association analysis over single SNP-based GWASs for detecting susceptibility genes for MS. The new findings may provide novel insights into the molecular mechanisms underlying MS.

Supplementary Materials

The online-only Data Supplement is available with this article at <http://dx.doi.org/10.3988/jcn.2015.11.4.311>.

Conflicts of Interest

The authors have no financial conflicts of interest.

Acknowledgements

The study was supported by Natural Science Foundation of China (81473046, 81401343, 31401079, 31271336, 31071097, and 81373010), the Natural Science Foundation of Jiangsu Province (BK20130300), the Startup Fund from Soochow University (Q413900112, Q413900712), the Scientific Research Foundation for the Returned Overseas Chinese Scholars, State Education Ministry, and a Project of the Priority Academic Program Development of Jiangsu Higher Education Institutions.

REFERENCES

- Selchen D, Bhan V, Blevins G, Devonshire V, Duquette P, Grand'Maison F, et al. MS, MRI, and the 2010 McDonald criteria: a Canadian expert commentary. *Neurology* 2012;79(23 Suppl 2):S1-S15.
- Compston A, Coles A. Multiple sclerosis. *Lancet* 2008;372:1502-1517.
- Milo R, Kahana E. Multiple sclerosis: geoepidemiology, genetics and the environment. *Autoimmun Rev* 2010;9:A387-A394.
- Nakahara J, Maeda M, Aiso S, Suzuki N. Current concepts in multiple sclerosis: autoimmunity versus oligodendroglialopathy. *Clin Rev Allergy Immunol* 2012;42:26-34.
- Australia and New Zealand Multiple Sclerosis Genetics Consortium (ANZgene). Genome-wide association study identifies new multiple sclerosis susceptibility loci on chromosomes 12 and 20. *Nat Genet* 2009;41:824-828.
- Jakkula E, Leppä V, Sulonen AM, Varilo T, Kallio S, Kemppinen A, et al. Genome-wide association study in a high-risk isolate for multiple sclerosis reveals associated variants in *STAT3* gene. *Am J Hum Genet* 2010;86:285-291.
- D'Netto MJ, Ward H, Morrison KM, Ramagopalan SV, Dymont DA, DeLuca GC, et al. Risk alleles for multiple sclerosis in multiplex families. *Neurology* 2009;72:1984-1988.
- International Multiple Sclerosis Genetics Consortium, Hafler DA, Compston A, Sawcer S, Lander ES, Daly MJ, et al. Risk alleles for multiple sclerosis identified by a genomewide study. *N Engl J Med* 2007;357:851-862.
- Baranzini SE, Wang J, Gibson RA, Galwey N, Naegelin Y, Barkhof F, et al. Genome-wide association analysis of susceptibility and clinical phenotype in multiple sclerosis. *Hum Mol Genet* 2009;18:767-778.
- Li MX, Gui HS, Kwan JS, Sham PC. GATES: a rapid and powerful gene-based association test using extended Simes procedure. *Am J Hum Genet* 2011;88:283-293.
- Liu JZ, McRae AF, Nyholt DR, Medland SE, Wray NR, Brown KM, et al. A versatile gene-based test for genome-wide association studies. *Am J Hum Genet* 2010;87:139-145.
- Neale BM, Sham PC. The future of association studies: gene-based analysis and replication. *Am J Hum Genet* 2004;75:353-362.
- McDonald WI, Compston A, Edan G, Goodkin D, Hartung HP, Lublin FD, et al. Recommended diagnostic criteria for multiple sclerosis: guidelines from the International Panel on the diagnosis of multiple sclerosis. *Ann Neurol* 2001;50:121-127.
- Kemppinen AK, Kaprio J, Palotie A, Saarela J. Systematic review of genome-wide expression studies in multiple sclerosis. *BMJ Open* 2011;1:e000053.
- Lutterotti A, Jelčić I, Schulze C, Schippling S, Breiden P, Mazzanti B, et al. No proinflammatory signature in CD34+ hematopoietic progenitor cells in multiple sclerosis patients. *Mult Scler* 2012;18:1188-1192.
- Annibaldi V, Ristori G, Angelini DF, Serafini B, Mechelli R, Cannoni S, et al. CD161(high)CD8+T cells bear pathogenetic potential in multiple sclerosis. *Brain* 2011;134(Pt 2):542-554.
- Lieury A, Chanal M, Androdias G, Reynolds R, Cavagna S, Giraudon P, et al. Tissue remodeling in periplaque regions of multiple sclerosis spinal cord lesions. *Glia* 2014;62:1645-1658.
- Franceschini A, Szklarczyk D, Frankild S, Kuhn M, Simonovic M, Roth A, et al. STRING v9.1: protein-protein interaction networks, with increased coverage and integration. *Nucleic Acids Res* 2013;41(Database issue):D808-D815.
- Huang da W, Sherman BT, Lempicki RA. Systematic and integrative analysis of large gene lists using DAVID bioinformatics resources. *Nat Protoc* 2009;4:44-57.
- Graham RR, Kozyrev SV, Baechler EC, Reddy MV, Plenge RM, Bauer JW, et al. A common haplotype of interferon regulatory factor 5 (IRF5) regulates splicing and expression and is associated with increased risk of systemic lupus erythematosus. *Nat Genet* 2006;38:550-555.
- Hochberg Y. A sharper Bonferroni procedure for multiple tests of significance. *Biometrika* 1988;75:800-802.
- Hong MG, Reynolds CA, Feldman AL, Kallin M, Lambert JC, Amouyel P, et al. Genome-wide and gene-based association implicates *FRMD6* in Alzheimer disease. *Hum Mutat* 2012;33:521-529.
- Buil A, Martinez-Perez A, Perera-Lluna A, Rib L, Caminal P, Soria JM. A new gene-based association test for genome-wide association studies. *BMC Proc* 2009;3 Suppl 7:S130.
- Patsopoulos NA; Bayer Pharma MS Genetics Working Group; Steering Committees of Studies Evaluating IFN β -1b and a CCR1-Antagonist; ANZgene Consortium; GeneMSA; International Multiple Sclerosis Genetic Consortium, et al. Genome-wide meta-analysis identifies novel multiple sclerosis susceptibility loci. *Ann Neurol* 2011;70:897-912.
- Weber F, Cepok S, Wolf C, Berthele A, Uhr M, Bettecken T, et al. Single-nucleotide polymorphisms in HLA- and non-HLA genes associated with the development of antibodies to interferon- β therapy in multiple sclerosis patients. *Pharmacogenomics J* 2012;12:238-245.
- International Multiple Sclerosis Genetics Consortium; Wellcome Trust

- Case Control Consortium 2, Sawcer S, Hellenthal G, Pirinen M, Spencer CC, et al. Genetic risk and a primary role for cell-mediated immune mechanisms in multiple sclerosis. *Nature* 2011;476:214-219.
27. Song GG, Bae SC, Lee YH. Pathway analysis of genome-wide association studies on rheumatoid arthritis. *Clin Exp Rheumatol* 2013;31:566-574.
 28. Tervaniemi MH, Siitonen HA, Söderhäll C, Minhas G, Vuola J, Tiala I, et al. Centrosomal localization of the psoriasis candidate gene product, CCHCR1, supports a role in cytoskeletal organization. *PLoS One* 2012;7:e49920.
 29. Gandhi G, Buttar BS, Albert L, Hasan Q, Aggarwal RK. Psoriasis-associated genetic polymorphism in North Indian population in the CCHCR1 gene and in a genomic segment flanking the HLA-C region. *Dis Markers* 2011;31:361-370.
 30. Berger T, Reindl M. Multiple sclerosis: disease biomarkers as indicated by pathophysiology. *J Neurol Sci* 2007;259:21-26.
 31. Wallström E, Khademi M, Andersson M, Weissert R, Linington C, Olsson T. Increased reactivity to myelin oligodendrocyte glycoprotein peptides and epitope mapping in HLA DR2(15)+ multiple sclerosis. *Eur J Immunol* 1998;28:3329-3335.
 32. Raddassi K, Kent SC, Yang J, Bourcier K, Bradshaw EM, Seyfert-Margolis V, et al. Increased frequencies of myelin oligodendrocyte glycoprotein/MHC class II-binding CD4 cells in patients with multiple sclerosis. *J Immunol* 2011;187:1039-1046.
 33. Van der Aa A, Hellings N, Bernard CC, Raus J, Stinissen P. Functional properties of myelin oligodendrocyte glycoprotein-reactive T cells in multiple sclerosis patients and controls. *J Neuroimmunol* 2003;137:164-176.
 34. Linington C, Bradl M, Lassmann H, Brunner C, Vass K. Augmentation of demyelination in rat acute allergic encephalomyelitis by circulating mouse monoclonal antibodies directed against a myelin/oligodendrocyte glycoprotein. *Am J Pathol* 1988;130:443-454.
 35. Riker AI, Enkemann SA, Fodstad O, Liu S, Ren S, Morris C, et al. The gene expression profiles of primary and metastatic melanoma yields a transition point of tumor progression and metastasis. *BMC Med Genomics* 2008;1:13.
 36. Zhang Z, Huettner PC, Nguyen L, Bidder M, Funk MC, Li J, et al. Aberrant promoter methylation and silencing of the POU2F3 gene in cervical cancer. *Oncogene* 2006;25:5436-5445.
 37. Denis GV. Bromodomain coactivators in cancer, obesity, type 2 diabetes, and inflammation. *Discov Med* 2010;10:489-499.
 38. Filetici P, P O, Ballario P. The bromodomain: a chromatin browser? *Front Biosci* 2001;6:D866-D876.
 39. Mahdi H, Fisher BA, Källberg H, Plant D, Malmström V, Rönnelid J, et al. Specific interaction between genotype, smoking and autoimmunity to citrullinated alpha-enolase in the etiology of rheumatoid arthritis. *Nat Genet* 2009;41:1319-1324.
 40. Alcina A, Fernández O, Gonzalez JR, Catalá-Rabasa A, Fedetz M, Ndagire D, et al. Tag-SNP analysis of the GFI1-EVI5-RPL5-FAM69 risk locus for multiple sclerosis. *Eur J Hum Genet* 2010;18:827-831.