

CORRECTION

Correction: Fine Mapping of Dominant X-Linked Incompatibility Alleles in *Drosophila* Hybrids

Daniel R. Matute, Jackie Gavin-Smyth

The legend for [Fig 4](#) is incorrect. The correct legend is included here.



OPEN ACCESS

Citation: Matute DR, Gavin-Smyth J (2015) Correction: Fine Mapping of Dominant X-Linked Incompatibility Alleles in *Drosophila* Hybrids. PLoS Genet 11(10): e1005558. doi:10.1371/journal.pgen.1005558

Published: October 7, 2015

Copyright: © 2015 Matute, Gavin-Smyth. This is an open access article distributed under the terms of the [Creative Commons Attribution License](#), which permits unrestricted use, distribution, and reproduction in any medium, provided the original author and source are credited.

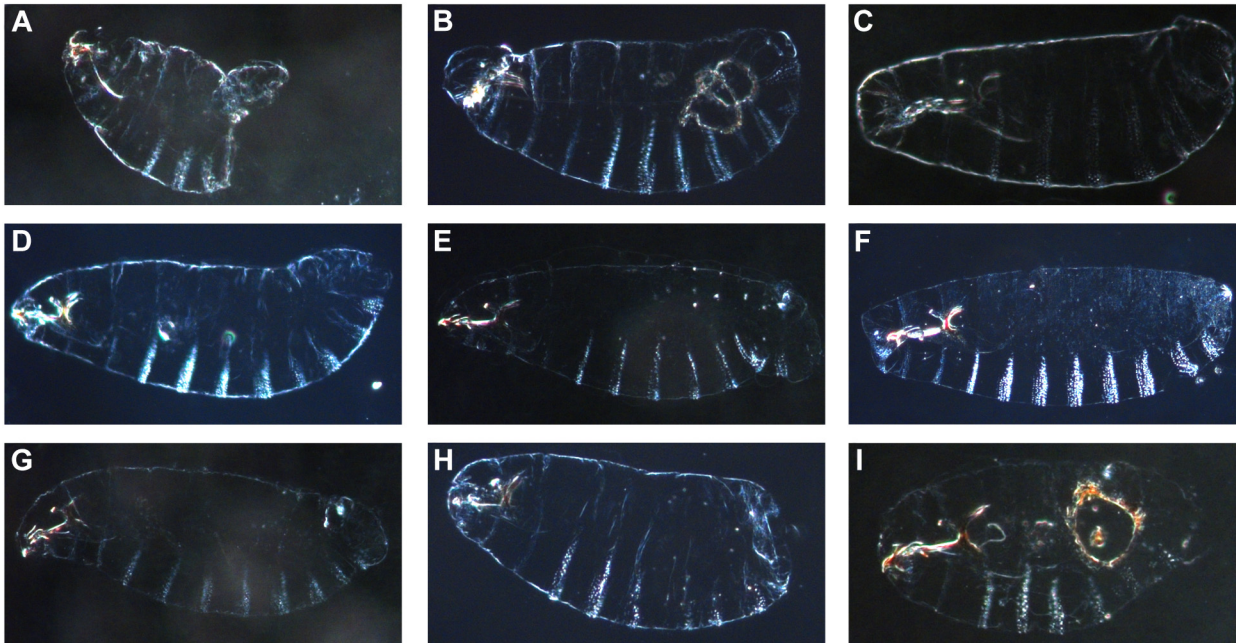


Fig 4. Cuticular defects observed in the nine lethal regions from the *D. melanogaster* X-chromosome. A. Males carrying the 3A–3D region show the abdominal ablation observed in X^{mel}/Y^{san} hybrid males and $X^{mel}X^{mel}/Y^{san}$ hybrid females. B–I. Hybrid males that carry any of the other eight embryonic lethal X^{mel} -linked regions show different phenotypes and the abdominal ablation is more rare than in X^{mel}/Y^{san} males. The genotypes (and the cytological bands of the duplication) of each of the shown males are: A. *Dp(1;Y)BSC75* (X:2C1-3E4). B. *Dp(1;Y)BSC176* (X:7B2-7D18). C. *Dp(1;Y)BSC186* (X:12C1-12F4). D. *Dp(1;Y)BSC159* (X:4A5-4D7). E. *Dp(1;Y)BSC126* (X:11C2-11D1). F. *Dp(1;Y)BSC269* (X:12E9-13C5). G. *Dp(1;Y)BSC289* (X:5E1-6C7). H. *Dp(1;Y)BSC327* (X:11D5-11E8). I. *Dp(1;Y)BSC11* (X:16F6-18A7).

doi:10.1371/journal.pgen.1005558.g001

Reference

1. Matute DR, Gavin-Smyth J (2014) Fine Mapping of Dominant X-Linked Incompatibility Alleles in *Drosophila* Hybrids. *PLoS Genet* 10(4): e1004270. doi:[10.1371/journal.pgen.1004270](https://doi.org/10.1371/journal.pgen.1004270) PMID: [24743238](https://pubmed.ncbi.nlm.nih.gov/24743238/)