

# SCIENTIFIC REPORTS



OPEN

## Adiposity and immune-muscle crosstalk in South Asians & Europeans: A cross-sectional study

Received: 21 November 2014

Accepted: 28 August 2015

Published: 12 October 2015

M. Constantine Samaan<sup>1,2</sup>, Sonia S. Anand<sup>3,4,5,6</sup>, Arya M. Sharma<sup>7</sup>, Ashley Bonner<sup>6</sup>, Joseph Beyene<sup>6</sup>, Imtiaz Samjoo<sup>5</sup> & Mark A. Tarnopolsky<sup>1,5</sup>

South Asians (SA) are at higher risk of cardiometabolic disorders than Europeans (EU), yet the potential determinants of this risk are poorly understood. We tested the hypotheses that 1) South Asians (SA) have greater muscle inflammation compared to Europeans (EU) at similar fat mass 2) differential regional adiposity in SA compared to EU is associated with enhanced muscle inflammation in SA. This cross-sectional study was conducted at a tertiary academic center in Hamilton, Ontario, Canada. The study included 29 EU and 26 SA. Quantitative real-time PCR and western blot were used to measure muscle inflammation. Statistical analysis was done using a General Linear Model. Despite having similar macrophage content to EU, SA muscle had lower levels of chemokine CCL2 compared to EU at gene expression ( $\beta$  -1.099, SE  $\beta$  0.521, p-value 0.04) and protein ( $0.84 \pm 0.69$  versus  $1.10 \pm 0.60$ , p-value 0.052) levels. SA had more pronounced abdominal and hepatic adiposity, with smaller Intramyocellular lipid particles compared to EU ( $0.26 \pm 0.12 \mu\text{m}^2$  versus  $0.15 \pm 0.06 \mu\text{m}^2$ , p-value 0.02). In conclusion, CCL2 downregulation in SA may be an attempt to protect muscle against macrophage infiltration, and defects in fatty acid partitioning to muscle may lead to the disproportionate adiposity and adverse cardiometabolic profile in SA.

Nearly 2.1 Billion people are overweight or obese worldwide, but obesity affects certain ethnic groups disproportionately<sup>1,2</sup>. South Asians (SA), encompassing people originating from India, Pakistan, Sri Lanka and Bangladesh with a significant global diaspora<sup>3-5</sup>, have higher rates of obesity, type 2 diabetes and cardiovascular disease at lower body mass index (BMI) compared to Caucasian Europeans (EU)<sup>6,7</sup>. At similar BMI levels, SA have higher visceral adiposity compared to EU<sup>8</sup>. In addition, one study suggested that SA have higher Intramyocellular lipids (IMCL) than EU<sup>9</sup>.

The expansion of different fat depots leads to distinctive consequences on metabolic profiles. Higher visceral adiposity is associated with immune system activation and adipose tissue inflammation<sup>10-19</sup>, which can be explained by excess fatty acids, cytokines and chemokines in adipose tissue attracting circulating immune cells, including monocytes, neutrophils, and T-Lymphocytes<sup>10-19</sup>. Monocyte attraction into tissues depends on several chemokines, and one of the most important chemokines involved in this process is Chemokine (C-C motif) Ligand 2<sup>19</sup>. Monocytes will sense local adipose tissue milieu and differentiate to macrophages that secrete inflammation-propagating cytokines<sup>14,20-22</sup>. On the other hand, the subcutaneous adipose tissue compartment has been proposed to have favorable metabolic characteristics, but is SA is characterized by increased adipocyte size and low-grade systemic inflammation with insulin resistance<sup>23,24</sup>.

<sup>1</sup>Department of Pediatrics, McMaster University, Hamilton, Ontario, Canada. <sup>2</sup>Division of Pediatric Endocrinology, McMaster Children's Hospital, Hamilton, Ontario, Canada. <sup>3</sup>Population Genomics Program, Chanchlani Research Centre, McMaster University, Hamilton, ON, Canada. <sup>4</sup>Population Health Research Institute, Hamilton Health Sciences and McMaster University, Hamilton, Ontario, Canada. <sup>5</sup>Department of Medicine, McMaster University, Hamilton, Ontario, Canada. <sup>6</sup>Department of Clinical Epidemiology/Biostatistics, McMaster University, Hamilton, Ontario, Canada. <sup>7</sup>University of Alberta, Edmonton, Alberta, Canada. Correspondence and requests for materials should be addressed to M.C.S. (email: samaanc@mcmaster.ca)

Variable	SA	EU	T-test (p-value)
Total number	26	29	
Age (years)	35.30 ± 11.10	32.20 ± 10.30	0.27
Female (n)	7	16	0.08
Overweight/Obese (n)	15	22	
Systolic BP (mmHg)	112.50 ± 10.20	110.80 ± 9.50	0.49
Diastolic BP (mmHg)	73.70 ± 9.00	73.10 ± 6.50	0.65
Body composition & adiposity			
BMI (kg/m <sup>2</sup> )	26.20 ± 3.50	27.30 ± 5.20	0.39
WHR	0.89 ± 0.09	0.84 ± 0.07	0.016
Fat mass (kg)	23.90 ± 8.10	25.70 ± 13.10	0.53
Fat mass %	32.0 ± 9.20	32.20 ± 13.20	0.95
Lean mass (kg)	50.50 ± 9.50	51.90 ± 10.00	0.58
Visceral adipose tissue area (cm <sup>2</sup> , N = 55)	141.70 ± 15.10	66.00 ± 14.10	0.001
Subcutaneous adipose tissue area (cm <sup>2</sup> , N = 38)	219.10 ± 82.40	244.60 ± 105.00	0.31
Intrahepatocellular fat %	9.90 ± 1.70	2.50 ± 1.90	0.005
Biochemical measurements			
Fasting glucose (mmol/l)	5.00 ± 0.55	4.80 ± 0.44	0.06
Fasting insulin (pmol/l)	8.80 ± 4.10	8.00 ± 5.80	0.26
HOMA-IR	2.45 ± 1.70	1.70 ± 1.30	0.07
Cholesterol (mmol/l)	4.60 ± 0.99	4.80 ± 1.05	0.43
Triglycerides (mmol/l)	1.57 ± 1.16	1.12 ± 0.60	0.06
HDL (mmol/l)	1.20 ± 0.27	1.39 ± 0.37	0.08
LDL (mmol/l)	2.70 ± 0.80	2.80 ± 0.80	0.58
Apo B (mmol/l)	0.91 ± 0.30	0.93 ± 0.29	0.80

**Table 1. Clinical & biochemical characteristics for participants.** SA = South Asian; EU = European; BMI = body mass index; WHR = waist-to-hip ratio; BP = blood pressure; HOMA-IR = Homeostatic model assessment-insulin resistance; HDL = high-density lipoprotein; LDL = low-density lipoprotein; Apo B = Apolipoprotein B; V02 max = maximal oxygen uptake.

While studies have focused on understanding inflammation in adipose tissue<sup>10–18</sup>, and showed an excess of macrophages in obese adipose tissue in EU, there are no data regarding the effect of systemic (total fat mass) and regional adiposity, including visceral adipose tissue (VAT), intrahepatocellular fat, and intramyocellular lipids (IMCL) on inflammation in skeletal muscle in SA compared to EU<sup>25–27</sup>. As muscle is the supreme metabolic tissue for postprandial glucose uptake<sup>28–30</sup>, understanding the mechanisms of muscle inflammation may help manage its adverse effects on muscle insulin signaling and myocellular fat metabolism, and develop better understanding of the potential contribution of inflammation to insulin resistance and excess cardiometabolic risk in SA compared to EU.

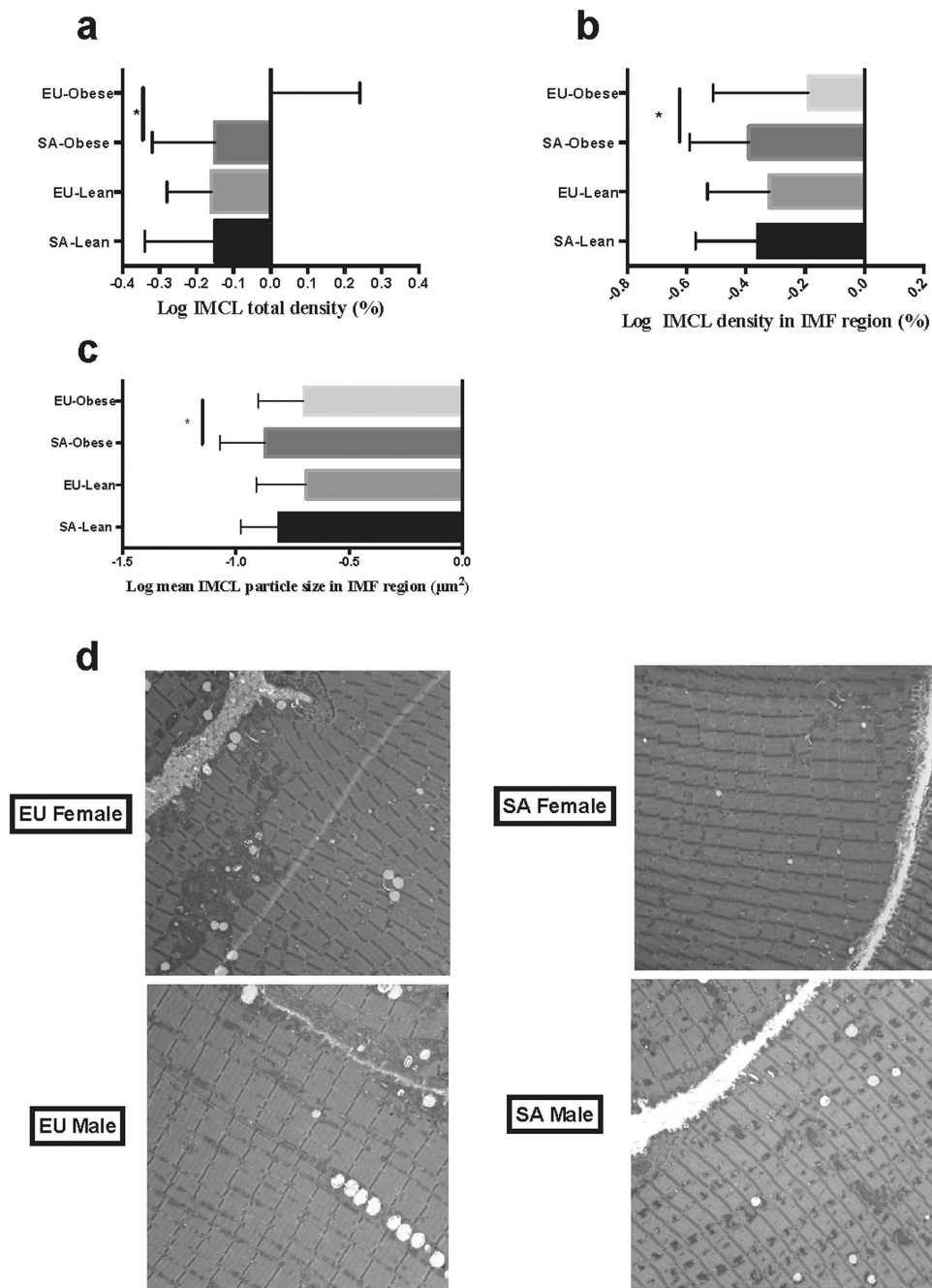
In this study, we tested the association of systemic and regional adiposity with muscle inflammation in SA and EU. We hypothesized that 1) SA have greater muscle inflammation compared to EU at similar total fat mass, and 2) Differential regional adiposity in SA is associated with enhanced muscle inflammation compared to EU.

The primary aim of this study is to determine if SA have more muscle inflammation compared to EU. The secondary aims of this study are to determine if SA have differential adiposity patterns compared to EU, and if these depots are associated with a specific inflammatory profile in muscle that differs between SA and EU.

## Results

**Clinical & biochemical characteristics of participants.** Table 1 compares the clinical and biochemical details of SA (n = 26, 7 female) and EU (n = 29, 16 female).

Fitness levels were equal in both groups (VO<sub>2</sub> (ml/kg) SA 4.14 ± 1.08 versus EU 4.29 ± 1.17, p-value 0.56). SA had a higher trend for fasting blood glucose (5.00 ± 0.55 mmol/l versus 4.80 ± 0.44 mmol/l, p-value 0.06), HOMA-IR (2.45 ± 1.70 versus 1.70 ± 1.30, p-value 0.07), triglycerides (1.57 ± 1.16 mmol/l



**Figure 1. Obese SA have smaller IMCL particles in IMF compared to EU.** (a) Log IMCL total density (%); (b) Log IMCL density in IMF region (%); (c) Log mean IMCL particle size in IMF region ( $\mu\text{m}^2$ ); (d) Representative electron microscopy images for IMCL for SA and EU males and females.

versus  $1.12 \pm 0.60$ , p-value 0.06) and lower HDL ( $1.20 \pm 0.27$  mmol/l versus  $1.39 \pm 0.37$  mmol/l, p-value 0.08) compared to EU.

**Ethnic differences in fat depots.** In the overall molSHARE study ( $n=108$ ), SA had greater fat mass, intrahepatic and VAT with higher rates of insulin resistance, lower HDL and higher triglycerides compared to EU<sup>8</sup>. In the subgroup of participants included in the current study, SA and EU have similar BMI ( $26.2 \pm 3.5$  versus  $27.3 \pm 5.2$ , p-value 0.39) and fat mass ( $23.9 \pm 8.1$  kg versus  $25.7 \pm 13.1$  kg, p-value 0.53) (Table 1), which allows the comparison of the effects of individual fat depots on muscle inflammation between ethnic groups.

SA participants have larger VAT depot ( $141.70 \pm 15.10$  cm<sup>2</sup> versus  $66.00 \pm 14.10$  cm<sup>2</sup>, p-value 0.001), and increased intrahepatocellular fat ( $9.90 \pm 1.70\%$  versus  $2.50 \pm 1.90$ , p-value 0.005) compared to EU (Table 1). In contrast to higher visceral and hepatic adiposity, SA have decreased IMCL density in the

Log Variable	Lean								Overweight/obese							
	SA	SD	EU	SD	Mean difference	95%CI		P-value	SA	SD	EU	SD	Mean difference	95%CI		P-value
IMCL density in SS region (%)	0.74	0.15	0.62	0.18	0.12	-0.03	0.27	0.11	0.69	0.29	0.82	0.27	-0.13	-0.33	0.07	0.19
IMCL density in IMF region (%)	-0.36	0.21	-0.32	0.21	-0.04	-0.22	0.15	0.70	-0.39	0.20	-0.19	0.32	-0.19	-0.37	-0.01	0.04
IMCL total density (%)	-0.15	0.19	-0.16	0.12	0.01	-0.13	0.15	0.88	-0.15	0.17	0.001	0.24	-0.15	-0.30	-0.004	0.045
Mean IMCL particle size in SS region ( $\mu\text{m}^2$ )	-0.63	0.17	-0.54	0.10	-0.09	-0.21	0.04	0.17	-0.65	0.19	-0.67	0.22	0.02	-0.13	0.17	0.79
Mean IMCL particle size in IMF region ( $\mu\text{m}^2$ )	-0.81	0.17	-0.69	0.22	-0.12	-0.30	0.06	0.18	-0.87	0.20	-0.70	0.20	-0.17	-0.31	-0.03	0.02
Mean total IMCL particle size ( $\mu\text{m}^2$ )	-0.72	0.14	-0.64	0.18	-0.08	-0.29	0.06	0.27	-0.78	0.18	-0.67	0.19	-0.11	-0.24	0.03	0.12
IMCL number of particles in SS region ( $\#/\mu\text{m}^2$ )	-0.58	0.15	-0.65	0.11	-0.08	-0.22	0.06	0.23	-0.64	0.18	-0.64	0.14	-0.01	-0.12	0.10	0.90
IMCL number of particles in IMF region ( $\#/\mu\text{m}^2$ )	-1.60	0.19	-1.56	0.20	-0.04	-0.21	0.14	0.66	-1.52	0.16	-1.50	0.20	-0.02	-0.15	0.11	0.70
Mean total IMCL particle ( $\#/\mu\text{m}^2$ )	-1.44	0.16	-1.41	0.16	-0.03	-0.18	0.12	0.65	-1.39	0.13	-1.38	0.16	-0.002	-0.10	0.10	0.97

**Table 2. Log IMCL density, particle size and number in lean and obese SA and EU.**

SS = subsarcolemmal; IMF = intermyofibrillar; IMCL = intramyocellular lipids.

IMF region compared to EU ( $0.41 \pm 0.24\%$  versus  $0.66 \pm 0.50\%$ , p-value 0.04; Fig. 1 a & b); this is due to smaller IMCL particles in the IMF region in the overweight/obese SA compared to overweight/obese EU in both sexes ( $0.15 \pm 0.06 \mu\text{m}^2$  versus  $0.26 \pm 0.12 \mu\text{m}^2$ , p-value 0.02, Fig. 1c & d), with similar number of particles noted in the IMF region. Lean SA and EU had similar IMCL particle size in IMF region (Table 2). IMCL density in subsarcolemmal region correlated positively with HOMA-IR (p-value 0.04).

**Ethnic differences in muscle inflammation.** To test the effect of ethnic variations on muscle inflammation, gene and protein expression analyses were undertaken to measure cytokine, chemokine/chemokine receptor, TLR, and immune cell markers including total macrophage content (CD68), inflammatory macrophages (CD11c), resident macrophages (MRC1) and neutrophils (MPO). In the unadjusted analyses, fat mass percentage (%FM) correlated with several inflammatory and immune markers (TNF $\alpha$ , CCL2, CCL3, IL-8, CCR2, TLR4, NLRP3, CD68, and MPO; Table 3). Higher VAT content is associated with reduced resident macrophages (MRC1) in muscle, and higher VAT and intrahepatocellular fat content is associated with higher muscle neutrophil content (MPO) (Table 3). Interestingly, IMCL did not correlate with the inflammatory and immune cell markers tested. From this point onwards, we included only the markers that showed correlation with the %FM in further analyses.

In order to determine the factors influencing the relationship of adiposity (%FM) to muscle inflammation, we included TNF $\alpha$ , CCL2, CCL3, IL-8, CCR2, TLR4, NLRP3, CD68, and MPO in General Linear Model and adjusted for age, sex, BMI, HOMA-IR, fitness and ethnicity. SA had higher CD68 ( $\beta$  1.411, SE  $\beta$  0.692, p-value 0.047) and lower CCL2 gene expression ( $\beta$  -1.099, SE  $\beta$  0.531, p-value 0.040) in muscle when compared to EU (Table 4; Fig. 2). There were no significant associations of VAT, hepatic fat and IMCL with TNF $\alpha$ , CCL2, CCL3, IL-8, CCR2, TLR4, NLRP3, CD68, and MPO (data not shown).

Protein quantification using western blot for CD 68 and CCL2 revealed that CD68 muscle protein content is similar in SA and EU ( $0.92 \pm 0.52$  versus  $0.98 \pm 0.35$ , p-value 0.63), and there was no correlation between ethnicity and CD68 (p-value 0.37). On the other hand, SA have lower CCL2 muscle protein levels than EU ( $0.84 \pm 0.69$  versus  $1.10 \pm 0.60$ , p-value 0.052) (Fig. 3a,b). When the whole group is analyzed, neither CD68 nor CCL2 protein correlated with the different fat depots or BMI (data not shown).

Marker	%FM			IMCL			VAT			Intrahepatocellular fat		
	$\beta$	SE $\beta$	P-value	$\beta$	SE $\beta$	P-value	$\beta$	SE $\beta$	P-value	$\beta$	SE $\beta$	P-value
Cytokines												
TNF $\alpha$	-0.014	0.006	0.02	0.073	0.139	0.60	0.001	0.001	0.92	0.000	0.009	1.00
IL-6	0.000	0.008	0.98	0.117	0.185	0.53	0.001	0.001	0.25	0.017	0.011	0.14
IL-10	0.003	0.012	0.83	0.061	0.256	0.81	0.001	0.001	0.64	0.014	0.016	0.39
Chemokine/receptor												
CCL2	0.017	0.007	0.02	0.209	0.166	0.21	0.000	0.001	0.69	0.010	0.010	0.34
CCL3	-0.019	0.010	0.08	0.349	0.228	0.13	0.001	0.001	0.50	0.006	0.014	0.66
IL-8	0.018	0.010	0.09	0.311	0.225	0.17	0.001	0.001	0.67	0.001	0.014	0.97
CCR2	0.015	0.007	0.04	0.069	0.155	0.66	0.000	0.001	0.76	0.001	0.010	0.95
TLRs												
TLR2	0.004	0.008	0.57	0.213	0.171	0.22	0.000	0.001	0.89	0.001	0.011	0.96
TLR4	-0.017	0.009	0.07	0.099	0.205	0.63	0.000	0.001	0.83	0.004	0.013	0.73
Inflammasome												
IL-1 $\beta$	-0.007	0.010	0.48	0.170	0.212	0.43	0.001	0.001	0.25	0.015	0.013	0.24
IL-18	-0.009	0.012	0.45	0.076	0.264	0.78	0.002	0.001	0.13	0.004	0.016	0.82
NLRP3	-0.023	0.010	0.02	0.279	0.225	0.22	0.001	0.001	0.34	0.018	0.014	0.19
Immune cells												
CD68	-0.020	0.010	0.05	0.217	0.224	0.34	0.001	0.001	0.55	0.009	0.014	0.50
MRC1	-0.010	0.008	0.23	0.223	0.185	0.23	0.003	0.001	0.01	0.007	0.012	0.55
CD11c	-0.011	0.007	0.13	0.258	0.159	0.11	0.000	0.001	0.65	0.007	0.010	0.52
MPO	0.065	0.017	0.0003	0.017	0.424	0.97	0.004	0.002	0.08	0.044	0.025	0.09

**Table 3. Unadjusted univariate analysis of muscle gene expression of immune and inflammatory markers correlated with different fat depots.**

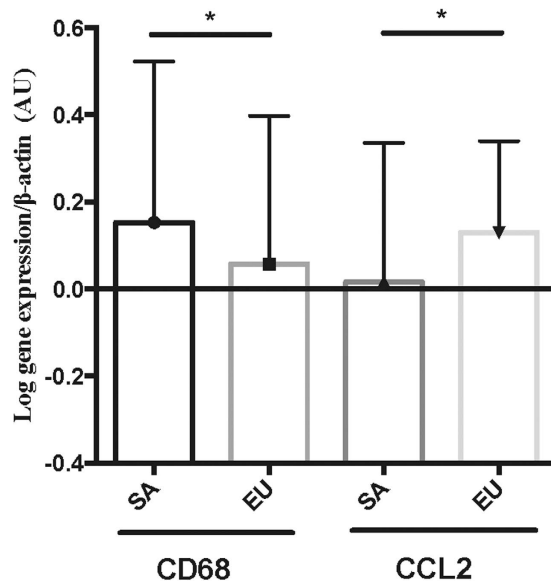
Marker	$\beta$	SE $\beta$	P-value
CD68	1.411	0.692	0.047
CCR2	0.041	0.533	0.939
MPO	-0.584	1.031	0.574
TNF $\alpha$	-0.284	0.408	0.491
CCL2	-1.099	0.521	0.040
CCL3	-0.037	0.735	0.960
IL-8	-0.651	0.795	0.417
TLR4	0.585	0.700	0.408
NLRP3	0.105	0.768	0.892

**Table 4. South Asians have higher muscle CD68 and lower CCL2 gene expression compared to Europeans.** General linear model addressing the relationship between inflammatory markers and %FM in South Asians compared to Europeans adjusted for age, sex, BMI, HOMA-IR, fitness and ethnicity.

## Discussion

In this study of seemingly healthy, non-diabetic subjects with similar age, BMI, and total fat mass, we demonstrate that SA have similar total muscle macrophage content (CD68) and lower monocyte/macrophage chemokine CCL2 compared to EU. SA had smaller IMCL particles in their muscle compared to EU.

In the literature, the evidence describing the relationship of muscle inflammation and adiposity is limited by small sample size, various laboratory techniques used, differences in populations studied, and different statistical methods used for data analysis. Some studies show that muscle macrophages correlate positively with BMI and inversely with insulin sensitivity<sup>25,31–33</sup>. In contrast, the association of muscle macrophages with BMI or adiposity has not been replicated in other studies<sup>26,27,34</sup>. Our results



**Figure 2.** Gene expression analysis of CD68 and CCL2 for SA and EU.

demonstrate that when samples are pooled in the analysis, muscle CD68 content does not correlate with total adiposity, BMI or the different fat depots.

We predicted that the greater VAT and intrahepatic fat depots in SA are associated with a more prominent inflammatory response in muscle compared to EU. Despite stark differences in regional adiposity patterns, no differences are detected in muscle macrophage content, macrophage subtype and other inflammatory markers between SA and EU when VAT, hepatic fat and IMCL are examined for their association with muscle inflammation. This argues for additional indirect mechanisms through which higher regional adiposity associates with muscle inflammation in different ethnic groups, or that inflammation may play a role later once other risk factors e.g. aging, dyslipidemia or dysglycemia are present, as this group is relatively healthy.

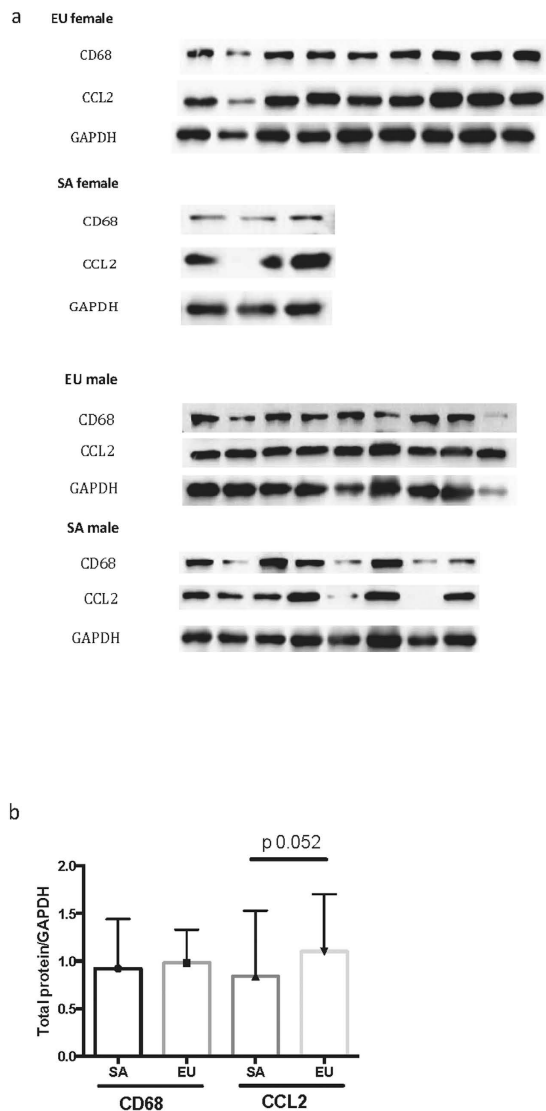
It is intriguing that similar CD68 content in SA muscle is witnessed despite the downregulation of one of the main monocyte/macrophage chemokines (CCL2). Polymorphisms in CCL2 gene in SA are associated with enhanced visceral adiposity<sup>35</sup>. There are two possibilities that may explain this paradoxical result of equal macrophage content with lower CCL2 in SA compared to EU. There may be additional chemokines that regulate monocyte/macrophage trafficking into SA muscle, so that even when CCL2 is downregulated these chemokines are upregulated to drive monocyte migration into muscle.

Alternatively, the downregulation of CCL2 in SA is an attempt to protect muscle against further monocyte infiltration. The overexpression of CCL2 in adipose tissue in mice is associated with enhanced monocyte recruitment<sup>36</sup>, and CCL2 knockout mice exhibit reduced adipose inflammation and macrophage infiltration<sup>19</sup>.

We also demonstrate lower IMCL particle size in IMF region in SA compared to EU. This suggests reduced rates of substrate delivery to muscle that may be due to endothelial dysfunction<sup>37–41</sup>, and reduced fatty acids available for oxidation. This is consistent with reports of reduced fatty acid oxidation in SA muscle with normal oxidative and lipid metabolism gene expression when compared to EU<sup>37</sup>. Morbidly obese, insulin resistant subjects have reduced fatty acid oxidation, and this is related to insulin resistance<sup>42</sup>. These studies are in contrast to other studies that revealed that SA are capable of increased oxidative capacity in association with insulin resistance<sup>43</sup>. Smaller IMCL particles in SA in our study may explain the differences in ectopic fat deposition between SA and EU. One possibility is that this is an adaptive response by muscle to prevent excess fatty acid supply; the inability to partition excess fatty acids into muscle may then result in larger liver and VAT fat depots, which is associated with adverse cardiometabolic outcomes in SA.

Our results are in contrast to a study that examined IMCL in 20 SA and 20 EU participants by proton magnetic resonance spectroscopy of the soleus muscle, and demonstrated that SA have higher IMCL content than EU<sup>9</sup>. While SA had higher fat mass and lower insulin sensitivity compared to EU, IMCL did not relate to obesity or insulin sensitivity in SA<sup>9</sup>. The difference in results between this study and ours may be explained by the difference in the methods used to quantify IMCL, and the different muscles used in this quantification. IMCL is highest in type I fibers (slow twitch, oxidative), and soleus muscle that was used in the above study has more type 1 fibers than the vastus lateralis muscle used in our study<sup>9,44–47</sup>. In conclusion, the different muscles studied, different methodologies in quantifying IMCL, and potential differences in the population sampled may explain the differences in these results. One of the major strengths of our study is that we evaluated the effect of regional fat depots, measured





**Figure 3. Muscle protein expression of CD68 and CCL2 in SA and EU. (a)** Western blot data for CD68, CCL2, and GAPDH as control. CD68 produces a band at 110 kDa, CCL2 30 kDa, and GAPDH 37 kDa. **(b)** Quantification of western blot result.

using state of the art methods, on muscle directly as the total fat mass, BMI and insulin resistance are similar between SA and EU.

Our study has several additional strengths. The relatively large sample size, well-characterized fat depots, and detailed muscle gene expression analyses of inflammatory markers, and protein analysis of CD68 and CCL2 provide a comprehensive evaluation of muscle inflammation. In addition, our statistical analyses were rigorously performed with a priori selected confounding factors to account for differences between the two ethnic groups.

Measuring muscle cytokines and lipid intermediates including diacylglycerol and ceramide in muscle would have been advantageous, because they may be associated with muscle inflammation. However, this requires significant amounts of muscle tissue that is difficult to access due to the invasive nature of the procedure, and obtaining a large biopsy from healthy donors are significant challenges.

In addition, another fat depot that we did not study is the intermuscular adipose tissue. Skeletal muscle has its own complement of fibro/adipogenic progenitors (FAPs). They represent a pool of cells that has been recently defined in the perivascular region in human muscle<sup>48</sup>. These cells participate in muscle homeostatic and injury responses in collaboration with myogenic progenitors and macrophages<sup>49,50</sup>. These cells contribute to intermuscular adipose tissue, which expands in lean and overweight men with the metabolic syndrome regardless of ethnicity<sup>51</sup>. The intermuscular adipose tissue also expands in other conditions including obesity, excess fatty acids, hypoxia and inflammation<sup>30</sup>.

In addition, recent evidence suggests that obesity can result in sex-specific muscle fiber organization changes. In obese male mice, the major Type I muscle fiber (slow twitch, oxidative) in soleus muscle rises

in proportion to adiposity. There is also transformation of Type I fibers to a hybrid I/IIB type (IIB fast twitch, glycolytic) with male obesity that was not seen in female mice<sup>52</sup>. While vastus lateralis is mainly composed of Type I fibers, the changes in intermuscular fat and how they impact fiber type organization, and the ethnic differences in these responses will require further study.

In summary, this study reveals that SA have similar muscle macrophage content to EU despite down-regulation of CCL2, an important monocyte chemokine. In addition, the noted ethnic differences in fat deposition into muscle may explain the differential patterns of fat accumulation in metabolic organs, which increases the risk of cardiometabolic problems known to affect SA at higher rates than EU.

Further investigation into the genetic, epigenetic, environmental and lifestyle factors influencing fat depot development and immune cell traffic into muscle in different ethnic groups is warranted, to enhance our understanding of the effects of ethnicity on skeletal muscle inflammation and fatty acid partitioning into metabolic organs. This may allow the design of targeted therapies to address inflammation and fatty acid deposition in muscle as potential mechanisms associated with adverse cardiometabolic outcomes in SA.

## Methods

This was a cross-sectional study conducted using muscle biopsy samples from the Molecular Study of Health and Risk in Ethnic Groups (Mol-SHARE) cohort, the protocol for which has been previously described<sup>8</sup>. The primary objective of Mol-SHARE study is to determine the differences in adiposity, adipose tissue inflammation and morphology, and muscle lipid and fatty acid oxidation and mitochondrial function between SA and EU<sup>8</sup>.

The full study included 18–50 year old subjects ( $n = 108$ ) who were recruited via mailed notices for the study, and by advertising in temples, Hamilton hospitals, and McMaster University campus. SA and EU subjects who were age, sex and BMI matched, and grouped across different BMI levels (lean = 18.5–25 kg/m<sup>2</sup>, overweight = 25.1–29.9 kg/m<sup>2</sup>, and obese = 30–45 kg/m<sup>2</sup>). We used a subgroup of the total study population for whom muscle tissue was available (SA  $n = 26$ , EU  $n = 29$ ). The Hamilton Health Sciences Research Ethics Board approved the study, and written informed consent was obtained from all participants. The study was conducted in accordance with appropriate clinical practice guidelines and national legal requirements.

**Fat depot quantifications.** The initial body composition measurement and fat mass determination was done using DEXA scans. To quantify abdominal visceral and subcutaneous adipose tissue, a T1-weighted MRI image at the level of mid-L4 (TR 400 ms, TE 13 ms) was acquired. The volume of subcutaneous and visceral fat was determined by manual tracing of the areas of fat. Intrahepatocellular lipids were measured using single voxel MRS (TR 1500 ms, TE 30 ms, 8 averages, 1024 data points over 1000 Hz spectral width, 1–2 cc voxel volume, and acquisition time 18 s, without water suppression).

The IMCL compartment was measured using electron microscopy<sup>53,54</sup>. Briefly, freshly biopsied muscle tissue was placed into 2% glutaraldehyde and subjected to transmission electron microscopy for quantification of lipid droplet characteristics. These include the number and density of lipid droplets in subsarcolemmal (SS) and intermyofibrillar (IMF) regions, mean droplet area, and the percentage of lipids touching mitochondria were measured using image Pro Plus software (Media Cybernetics, Silver Springs, MD). Researchers completing the analyses were blinded to the participants' ethnicity.

**Fitness testing.** Fitness testing was done using an electronically braked cycle ergometer (Excalibur Sport, Lode, Groningen, The Netherlands). Subject breathed at rest through a mouthpiece for 5 minutes before commencing the test while seated. Subjects began the cycle test with stage 1 at 15 watts for 5 min, followed by stage 2 at 50 watts for 10 minutes, with total test duration of 15 minutes. Computerized open-circuit gas collection system (Moxus Modulator VO<sub>2</sub> system with O<sub>2</sub> analyzer S-3 A/I and CO<sub>2</sub> analyzer CD-3A, AEI Technologies, Pittsburgh, PA) was used to collect data (Respiratory Exchange Ratio, heart rate, VO<sub>2</sub>, VCO<sub>2</sub>) at all time points.

**Biochemical Analyses.** Participants fasted for 12 hours prior to blood sampling. Enzymatic methods were used to measure total serum cholesterol<sup>55</sup> and glucose<sup>56</sup>. Serum LDL cholesterol was measured using the Friedewald formula<sup>57</sup>, and a homogenous enzymatic colorimetric assay (ROCHE/Hitachi Modular Package Insert) was used to measure HDL cholesterol. Triglycerides were quantified by the enzymatic colorimetric assay on ROCHE/Hitachi Modular instrument and reagent kit. Insulin was quantified using the Roche Elecsys R 2010 immunoassay analyzer with electrochemiluminescence immunoassay (Roche Diagnostics GmbH, Indianapolis, Indiana, USA). Serum C-Reactive Protein (CRP) was measured using the Roche Hitachi 917 using the Tina-quant R CRP high sensitivity assay.

**Gene expression analysis.** A Vastus lateralis muscle biopsy was performed as described previously<sup>8</sup>. Muscle was powdered in liquid nitrogen and added to 1 ml of Trizol. The sample was then homogenized in Trizol and RNA isolation was completed using Qiagen RNeasy mini kits (Qiagen, Valencia, CA) following manufacturer's instructions. The quality of the RNA was tested using nanospectrophotometer and all RNA samples had 260/280 ratio of 1.8–2.0. cDNA generation was performed with SuperScript<sup>®</sup> III reverse transcriptase kit (Invitrogen, Carlsbad, CA) following DNase treatment.



Gene expression analysis was performed for cytokines including Interleukin-6 (IL-6), Tumor Necrosis Factor-alpha (TNF $\alpha$ ), Interleukin-10 (IL-10), and chemokines including Chemokine (C-C motif) Ligand 2 (CCL2), Chemokine (C-C motif) Ligand 3 (CCL3), Interleukin-8 (IL-8), and Chemokine (C-C motif) Ligand 20 (CCL20), along with the chemokine receptor for CCL2 called Chemokine (C-C motif) Receptor 2 (CCR2). Innate immune system components were also tested including Toll-Like Receptors 2 & 4 (TLR2 & TLR4).

Innate immune cells including total macrophages (CD68), inflammatory macrophages/dendritic cell (CD11c), resident macrophages (Mannose Receptor, C Type 1, MRC1) and neutrophils (Myeloperoxidase, MPO) were examined. The NACHT, LRR and PYD domains-containing protein 3 (NLRP3) inflammasome and cytokines produced by its activation, including Interleukin-1 $\beta$  (IL-1 $\beta$ ) and Interleukin-18 (IL-18) were measured.

Quantitative Real-Time Polymerase Chain Reaction (qRT-PCR) was conducted using TaqMan<sup>®</sup> Gene Expression Assays (Applied Biosystems; Foster City, CA) using the Rotor-Gene 6000 qRT-PCR machine (Corbett Research; Mortlake, Australia).  $\beta$ -actin was chosen as the reference gene after testing additional reference genes including Ribosomal Protein, Large, P0 (RPLP0) and TATA-box Binding Protein and gene expression was computed using the  $\Delta\Delta$ Ct method<sup>58</sup>. The chemokine CCL20 was tested but did not result in a PCR product.

**Western blot.** The quantification of CD68 and CCL2 protein expression was done using western blot. Briefly, 20 mg of protein were loaded on a 7.5% Tris-Glycine gel using BioRad Mini-PROTEAN Tetra cell electrophoresis chamber. Protein transfer from the gel to nitrocellulose membrane was performed using the BioRad Mini-Transblot Cell running at 100 V for 1 hour at 4 °C. Blots were blocked with 5% Bovine Serum Albumin in TBST buffer with shaking for 1 hour at room temperature. Membranes were incubated with primary CD68 and CCL2 antibodies (Pierce) or GAPDH (Cell Signalling) that were diluted 1:1000 in 5% BSA in TBST overnight at 4 °C. Blots were then washed thrice with TBST, and were then incubated with HRP conjugated secondary antibody (1:1000), with shaking for 1 hour at room temperature and then washed thrice with TBST. Blots were treated with Amersham ECL Western Blotting Detection Reagents for 1 minute and signals detected using Vilber Fusion Imaging machine and software. All bands were quantified using Image J software<sup>59</sup>.

**Statistical analyses.** Statistics were performed using SPSS version 20.0 (IBM Corp, Armonk, NY) and Stata/SE 12.1 (Stata Corporation, College Station, TX). Data were examined for normality using the Shapiro-Wilk test, and log transformed if not normally distributed. We imputed missing values of inflammatory markers based on the mean value of the specific inflammatory marker within the corresponding ethnic group. Testing for co-linearity of the cytokine genes and covariates was done using variance inflation factor.

An independent sample t-test was used to examine the differences among clinical variables and metabolic data. A General linear model (GLM) was used to test the association of cytokine gene expression with fat mass percentage (%FM), visceral adipose tissue (VAT), intrahepatocellular fat, and IMCL. The analysis was done initially with no adjustment, and inflammatory and immune markers that correlated with the fat mass with a p-value of 0.1 or less were included in the adjusted analysis, with inclusion of covariates including age, sex, BMI, homeostatic model assessment-insulin resistance (HOMA-IR), fitness levels and ethnicity in the model. Because we had a priori hypothesized the role of the different biomarkers chosen in muscle-immune crosstalk, adjustments for multiple testing are not performed when assessing the significance of these relationships<sup>60</sup>. Quantification of western blots was adjusted for age, sex and ethnicity. Data are reported as mean  $\pm$  SD unless otherwise stated, and statistical significance was set at p-value of <0.05.

## References

1. Campos, P., Saguy, A., Ernsberger, P., Oliver, E. & Gaesser, G. The epidemiology of overweight and obesity: public health crisis or moral panic? *International journal of epidemiology* **35**, 55–60, doi: 10.1093/ije/dyi254 (2006).
2. Ng, M. *et al.* Global, regional, and national prevalence of overweight and obesity in children and adults during 1980–2013: a systematic analysis for the Global Burden of Disease Study 2013. *The Lancet* **384**, 766–781, doi: 10.1016/S0140-6736(14)60460-8 (2014).
3. de Munter, J. S., Agyemang, C., van Valkengoed, I. G., Bhopal, R. & Stronks, K. Sex difference in blood pressure among South Asian diaspora in Europe and North America and the role of BMI: a meta-analysis. *J Hum Hypertens* **25**, 407–417, doi: 10.1038/jhh.2010.77 (2011).
4. Madrigal, L. *et al.* Obesity, hypertension, and migration: a meta-analysis of populations of the South Asian diaspora. *Human biology* **83**, 71–86, doi: 10.3378/027.083.0105 (2011).
5. Patel, K. C. & Bhopal, R. Diabetes epidemic in the South Asian Diaspora: action before desperation. *J R Soc Med* **100**, 115–116, doi: 10.1258/jrsm.100.3.115 (2007).
6. Anand, S. S. *et al.* Differences in risk factors, atherosclerosis, and cardiovascular disease between ethnic groups in Canada: the Study of Health Assessment and Risk in Ethnic groups (SHARE). *The Lancet* **356**, 279–284, doi: 10.1016/S0140-6736(00)02502-2 (2000).
7. Yusuf, S., Reddy, S., Ounpuu, S. & Anand, S. Global burden of cardiovascular diseases: Part II: variations in cardiovascular disease by specific ethnic groups and geographic regions and prevention strategies. *Circulation* **104**, 2855–2864, doi: 10.1161/hc4701.099488 (2001).

8. Anand, S. S. *et al.* Adipocyte Hypertrophy, Fatty Liver and Metabolic Risk Factors in South Asians: The Molecular Study of Health and Risk in Ethnic Groups (mol-SHARE). *PLoS One* **6**, e22112, doi: 10.1371/journal.pone.0022112 (2011).
9. Forouhi, N. G. *et al.* Relation of triglyceride stores in skeletal muscle cells to central obesity and insulin sensitivity in European and South Asian men. *Diabetologia* **42**, 932–935, doi: 10.1007/s001250051250 (1999).
10. Samaan, M. C. The macrophage at the intersection of immunity and metabolism in obesity. *Diabetology & Metabolic Syndrome* **3**, 29, doi: 10.1186/1758-5996-3-29 (2011).
11. Kim, C. S. *et al.* Circulating levels of MCP-1 and IL-8 are elevated in human obese subjects and associated with obesity-related parameters. *Int J Obes (Lond)* **30**, 1347–1355, doi: 10.1038/sj.sjo.0803259 (2006).
12. Weisberg, S. P. *et al.* Obesity is associated with macrophage accumulation in adipose tissue. *J Clin Invest* **112**, 1796–1808, doi: 10.1172/JCI19246112/12/1796 (2003).
13. Shoelson, S. E., Herrero, L. & Naaz, A. Obesity, inflammation, and insulin resistance. *Gastroenterology* **132**, 2169–2180, doi: S0016-5085(07)00585-910.1053/j.gastro.2007.03.059 (2007).
14. Lumeng, C. N., Deyoung, S. M., Bodzin, J. L. & Saltiel, A. R. Increased inflammatory properties of adipose tissue macrophages recruited during diet-induced obesity. *Diabetes* **56**, 16–23, doi: 56/1/1610.2337/db06-1076 (2007).
15. Nguyen, M. T. *et al.* A subpopulation of macrophages infiltrates hypertrophic adipose tissue and is activated by free fatty acids via Toll-like receptors 2 and 4 and JNK-dependent pathways. *J Biol Chem* **282**, 35279–35292, doi: 10.1074/jbc.M706762200 (2007).
16. Xu, H. *et al.* Chronic inflammation in fat plays a crucial role in the development of obesity-related insulin resistance. *J Clin Invest* **112**, 1821–1830, doi: 10.1172/JCI19451112/12/1821 (2003).
17. Elgazar-Carmon, V., Rudich, A., Hadad, N. & Levy, R. Neutrophils transiently infiltrate intra-abdominal fat early in the course of high-fat feeding. *J Lipid Res* **49**, 1894–1903, doi: M800132-JLR20010.1194/jlr.M800132-JLR200 (2008).
18. Kintscher, U. *et al.* T-lymphocyte infiltration in visceral adipose tissue: a primary event in adipose tissue inflammation and the development of obesity-mediated insulin resistance. *Arterioscler Thromb Vasc Biol* **28**, 1304–1310, doi: ATVBAHA.108.165100 10.1161/ATVBAHA.108.165100 (2008).
19. Kanda, H. *et al.* MCP-1 contributes to macrophage infiltration into adipose tissue, insulin resistance, and hepatic steatosis in obesity. *J Clin Invest* **116**, 1494–1505, doi: 10.1172/JCI26498 (2006).
20. Lumeng, C. N., DelProposto, J. B., Westcott, D. J. & Saltiel, A. R. Phenotypic switching of adipose tissue macrophages with obesity is generated by spatiotemporal differences in macrophage subtypes. *Diabetes* **57**, 3239–3246, doi: db08-087210.2337/db08-0872 (2008).
21. Nayak, B. S. & Roberts, L. Relationship between inflammatory markers, metabolic and anthropometric variables in the Caribbean type 2 diabetic patients with and without microvascular complications. *J Inflamm (Lond)* **3**, 17, doi: 10.1186/1476-9255-3-17 (2006).
22. Nayak, B. S. *et al.* Association of low serum creatinine, abnormal lipid profile, gender, age and ethnicity with type 2 diabetes mellitus in Trinidad and Tobago. *Diabetes Res Clin Pract* **91**, 342–347, doi: 10.1016/j.diabres.2010.12.017 (2011).
23. Chandalia, M. *et al.* Insulin resistance and body fat distribution in South Asian men compared to Caucasian men. *PLoS One* **2**, e812, doi: 10.1371/journal.pone.0000812 (2007).
24. Garg, A. Regional adiposity and insulin resistance. *J Clin Endocrinol Metab* **89**, 4206–4210, doi: 10.1210/jc.2004-0631 (2004).
25. Varma, V. *et al.* Muscle inflammatory response and insulin resistance: synergistic interaction between macrophages and fatty acids leads to impaired insulin action. *Am J Physiol Endocrinol Metab* **296**, E1300–1310, doi: 90885.200810.1152/ajpendo.90885.2008 (2009).
26. Bruun, J. M., Helge, J. W., Richelsen, B. & Stallknecht, B. Diet and exercise reduce low-grade inflammation and macrophage infiltration in adipose tissue but not in skeletal muscle in severely obese subjects. *Am J Physiol Endocrinol Metab* **290**, E961–967, doi: 00506.2005 10.1152/ajpendo.00506.2005 (2006).
27. Di Gregorio, G. B. *et al.* Expression of CD68 and macrophage chemoattractant protein-1 genes in human adipose and muscle tissues: association with cytokine expression, insulin resistance, and reduction by pioglitazone. *Diabetes* **54**, 2305–2313, doi: 54/8/2305 (2005).
28. Petersen, K. F. & Shulman, G. I. Pathogenesis of skeletal muscle insulin resistance in type 2 diabetes mellitus. *Am J Cardiol* **90**, 11G–18G (2002).
29. Godoy-Matos, A. F. *et al.* Rosiglitazone decreases intra- to extramyocellular fat ratio in obese non-diabetic adults with metabolic syndrome. *Diabetic medicine : a journal of the British Diabetic Association* **27**, 23–29, doi: 10.1111/j.1464-5491.2009.02868.x (2010).
30. Vettor, R. *et al.* The origin of intermuscular adipose tissue and its pathophysiological implications. *Am J Physiol Endocrinol Metab* **297**, E987–998, doi: 10.1152/ajpendo.00229.2009 (2009).
31. Kim, T. H. *et al.* IL-6 induction of TLR-4 gene expression via STAT3 has an effect on insulin resistance in human skeletal muscle. *Acta diabetologica* **50**, 189–200, doi: 10.1007/s00592-011-0259-z (2013).
32. Fink, L. N. *et al.* Pro-inflammatory macrophages increase in skeletal muscle of high fat-fed mice and correlate with metabolic risk markers in humans. *Obesity* **22**, 747–757, doi: 10.1002/oby.20615 (2014).
33. Fink, L. N. *et al.* Expression of anti-inflammatory macrophage genes within skeletal muscle correlates with insulin sensitivity in human obesity and type 2 diabetes. *Diabetologia* **56**, 1623–1628, doi: 10.1007/s00125-013-2897-x (2013).
34. Tam, C. S. *et al.* Low macrophage accumulation in skeletal muscle of obese type 2 diabetics and elderly subjects. *Obesity (Silver Spring)* **20**, 1530–1533, doi: 10.1038/oby.2012.24 (2012).
35. Kaur, S. *et al.* Association of monocyte chemoattractant protein-1-2518 polymorphism with metabolic syndrome in a South Indian cohort. *Metabolic Syndrome and Related Disorders* **7**, 193–198, doi: 10.1089/met.2008.0064 (2009).
36. Kamei, N. *et al.* Overexpression of monocyte chemoattractant protein-1 in adipose tissues causes macrophage recruitment and insulin resistance. *J Biol Chem* **281**, 26602–26614, doi: M60128420010.1074/jbc.M601284200 (2006).
37. Hall, L. M. L. *et al.* Fat Oxidation, Fitness and Skeletal Muscle Expression of Oxidative/Lipid Metabolism Genes in South Asians: Implications for Insulin Resistance? *PLoS One* **5**, e14197, doi: 10.1371/journal.pone.0014197 (2010).
38. Saltin, B., Kiens, B., Savard, G. & Pedersen, P. K. Role of hemoglobin and capillarization for oxygen delivery and extraction in muscular exercise. *Acta physiologica Scandinavica. Supplementum* **556**, 21–32 (1986).
39. Hepple, R. T., Mackinnon, S. L., Goodman, J. M., Thomas, S. G. & Plyley, M. J. Resistance and aerobic training in older men: effects on VO<sub>2</sub>peak and the capillary supply to skeletal muscle. *J Appl Physiol (1985)* **82**, 1305–1310 (1997).
40. Lillioja, S. *et al.* Skeletal muscle capillary density and fiber type are possible determinants of *in vivo* insulin resistance in man. *J Clin Invest* **80**, 415–424, doi: 10.1172/JCI113088 (1987).
41. Lithell, H. *et al.* Body weight, skeletal muscle morphology, and enzyme activities in relation to fasting serum insulin concentration and glucose tolerance in 48-year-old men. *Diabetes* **30**, 19–25 (1981).
42. Coen, P. M. *et al.* Reduced skeletal muscle oxidative capacity and elevated ceramide but not diacylglycerol content in severe obesity. *Obesity (Silver Spring)* **21**, 2362–2371, doi: 10.1002/oby.20381 (2013).
43. Nair, K. S. *et al.* Asian Indians have enhanced skeletal muscle mitochondrial capacity to produce ATP in association with severe insulin resistance. *Diabetes* **57**, 1166–1175, doi: 10.2337/db07-1556 (2008).

44. Jansson, E., Esbjornsson, M., Holm, I. & Jacobs, I. Increase in the proportion of fast-twitch muscle fibres by sprint training in males. *Acta Physiol Scand* **140**, 359–363, doi: 10.1111/j.1748-1716.1990.tb09010.x (1990).
45. Esbjornsson, M. *et al.* Muscle fibre types and enzyme activities after training with local leg ischaemia in man. *Acta Physiol Scand* **148**, 233–241, doi: 10.1111/j.1748-1716.1993.tb09554.x (1993).
46. Simoneau, J. A. & Bouchard, C. Human variation in skeletal muscle fiber-type proportion and enzyme activities. *Am J Physiol* **257**, E567–572 (1989).
47. Hwang, J. H., Pan, J. W., Heydari, S., Hetherington, H. P. & Stein, D. T. Regional differences in intramyocellular lipids in humans observed by *in vivo* 1H-MR spectroscopic imaging. *J Appl Physiol* (1985) **90**, 1267–1274 (2001).
48. Uezumi, A. *et al.* Identification and characterization of PDGFR[alpha]+ mesenchymal progenitors in human skeletal muscle. *Cell death & disease* **5**, e1186, doi: 10.1038/cddis.2014.161 (2014).
49. Joe, A. W. *et al.* Muscle injury activates resident fibro/adipogenic progenitors that facilitate myogenesis. *Nature cell biology* **12**, 153–163, doi: 10.1038/ncb2015 (2010).
50. Lemos, D. R. *et al.* Nilotinib reduces muscle fibrosis in chronic muscle injury by promoting TNF-mediated apoptosis of fibro/adipogenic progenitors. *Nat Med*, doi: 10.1038/nm.3869 (2015).
51. Goodpaster, B. H. *et al.* Obesity, regional body fat distribution, and the metabolic syndrome in older men and women. *Arch Intern Med* **165**, 777–783, doi: 10.1001/archinte.165.7.777 (2005).
52. Denies, M. S. *et al.* Diet-induced obesity alters skeletal muscle fiber types of male but not female mice. *Physiological reports* **2**, e00204, doi: 10.1002/phy2.204 (2014).
53. Devries, M. C., Lowther, S. A., Glover, A. W., Hamadeh, M. J. & Tarnopolsky, M. A. IMCL area density, but not IMCL utilization, is higher in women during moderate-intensity endurance exercise, compared with men. *American Journal of Physiology—Regulatory, Integrative and Comparative Physiology* **293**, R2336–R2342, doi: 10.1152/ajpregu.00510.2007 (2007).
54. Samjoo, I. A. *et al.* Markers of skeletal muscle mitochondrial function and lipid accumulation are moderately associated with the homeostasis model assessment index of insulin resistance in obese men. *PLoS One* **8**, e66322, doi: 10.1371/journal.pone.0066322 (2013).
55. Allain, C. C., Poon, L. S., Chan, C. S., Richmond, W. & Fu, P. C. Enzymatic determination of total serum cholesterol. *Clin Chem* **20**, 470–475 (1974).
56. Neeley, W. E. Simple automated determination of serum or plasma glucose by a hexokinase-glucose-6-phosphate dehydrogenase method. *Clin Chem* **18**, 509–515 (1972).
57. Friedewald, W. T., Levy, R. I. & Fredrickson, D. S. Estimation of the concentration of low-density lipoprotein cholesterol in plasma, without use of the preparative ultracentrifuge. *Clin Chem* **18**, 499–502 (1972).
58. Livak, K. J. & Schmittgen, T. D. Analysis of relative gene expression data using real-time quantitative PCR and the 2(-Delta Delta C(T)) Method. *Methods* **25**, 402–408, doi: 10.1006/meth.2001.1262 (2001).
59. Schneider, C. A., Rasband, W. S. & Eliceiri, K. W. NIH Image to ImageJ: 25 years of image analysis. *Nat Meth* **9**, 671–675, doi: 10.1038/nmeth.2089 (2012).
60. Feise, R. J. Do multiple outcome measures require p-value adjustment? *BMC Med Res Methodol* **2**, 8, doi: 10.1186/1471-2288-2-8 (2002).

## Acknowledgements

We would like to acknowledge the participants in the study. We also thank Dr. Mohammed Khan (MK) and Ms. Vivian Leong for laboratory technical assistance. MCS is supported by the New Investigator Fund Grant from Hamilton Health Sciences (Grant no. NIF-11272). Dr. Anand is supported by a Canada Research Chair in Ethnicity and Cardiovascular Disease and the Heart and Stroke Foundation Michael DeGroote Chair in Population Health Research. Mol-SHARE study is funded by Heart & Stroke Foundation of Ontario, Canada (Project#: NA5702).

## Author Contributions

M.C.S., M.A.T. and S.S.A. conceived the study hypothesis. M.C.S., M.A.T., S.S.A., A.M.S. and I.A.S. conceived and designed the experiments. M.C.S., M.K., VL and I.A.S. performed experimental work. M.C.S., J.B., A.B., M.A.T. and S.S.A. analyzed the data and M.C.S. wrote the first draft, and all authors provided feedback to the submitted version of the manuscript.

## Additional Information

**Competing financial interests:** The authors declare no competing financial interests.

**How to cite this article:** Samaan, M.C. *et al.* Adiposity and immune-muscle crosstalk in South Asians & Europeans: A cross-sectional study. *Sci. Rep.* **5**, 14521; doi: 10.1038/srep14521 (2015).



This work is licensed under a Creative Commons Attribution 4.0 International License. The images or other third party material in this article are included in the article's Creative Commons license, unless indicated otherwise in the credit line; if the material is not included under the Creative Commons license, users will need to obtain permission from the license holder to reproduce the material. To view a copy of this license, visit <http://creativecommons.org/licenses/by/4.0/>