

Incidence and Risk Factors of Ventricular Fibrillation Before Primary Angioplasty in Patients With First ST-Elevation Myocardial Infarction: A Nationwide Study in Denmark

In the article by Jabbari et al, “Incidence and Risk Factors of Ventricular Fibrillation Before Primary Angioplasty in Patients With First ST-Elevation Myocardial Infarction: A Nationwide Study in Denmark,” which published online January 5, 2015, and appeared in the January 2015 issue of the journal (*J Am Heart Assoc.* 2015;4:e001399 doi: 10.1161/JAHA.

114.001399), Figure 2 was incorrectly presented as a duplication of Figure 1. The correct Figure 2 is presented here.

The publisher regrets this error.

The online version of the article has been updated and is available at <http://jaha.ahajournals.org/content/4/1/e001399>.

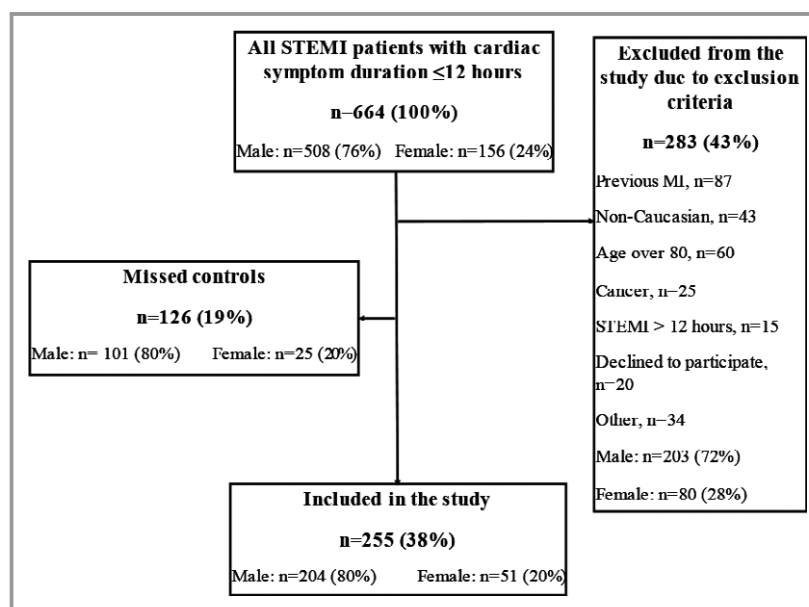


Figure 2. Representativeness of the control population to all STEMI patients at 2 centers: Flow diagram demonstrating screening and inclusion of STEMI at 2 of the 4 centers during the 8-month enrollment of the controls. STEMI indicates ST-segment elevation myocardial infarction.

J Am Heart Assoc. 2015;4:e000738 doi: 10.1161/JAHA.115.000738.

© 2015 The Authors. Published on behalf of the American Heart Association, Inc., by Wiley Blackwell. This is an open access article under the terms of the Creative Commons Attribution-NonCommercial License, which permits use, distribution and reproduction in any medium, provided the original work is properly cited and is not used for commercial purposes.