

RESEARCH

Open Access



Increased S100A4 expression in the vasculature of human COPD lungs and murine model of smoke-induced emphysema

Sebastian Reimann^{1†}, Ludger Fink^{1,2*†}, Jochen Wilhelm¹, Julia Hoffmann³, Mariola Bednorz¹, Michael Seimetz¹, Isabel Dessureault¹, Roger Troesser¹, Bahil Ghanim⁴, Walter Klepetko⁴, Werner Seeger¹, Norbert Weissmann¹ and Grazyna Kwapiszewska^{1,3}

Abstract

Background: Chronic obstructive lung disease (COPD) is a common cause of death in industrialized countries often induced by exposure to tobacco smoke. A substantial number of patients with COPD also suffer from pulmonary hypertension that may be caused by hypoxia or other hypoxia-independent stimuli - inducing pulmonary vascular remodeling. The Ca²⁺ binding protein, S100A4 is known to play a role in non-COPD-driven vascular remodeling of intrapulmonary arteries. Therefore, we have investigated the potential involvement of S100A4 in COPD induced vascular remodeling.

Methods: Lung tissue was obtained from explanted lungs of five COPD patients and five non-transplanted donor lungs. Additionally, mice lungs of a tobacco-smoke-induced lung emphysema model (exposure for 3 and 8 month) and controls were investigated. Real-time RT-PCR analysis of S100A4 and RAGE mRNA was performed from laser-microdissected intrapulmonary arteries. S100A4 immunohistochemistry was semi-quantitatively evaluated. Mobility shift assay and siRNA knock-down were used to prove hypoxia responsive elements (HRE) and HIF binding within the S100A4 promoter.

Results: Laser-microdissection in combination with real-time PCR analysis revealed higher expression of S100A4 mRNA in intrapulmonary arteries of COPD patients compared to donors. These findings were mirrored by semi-quantitative analysis of S100A4 immunostaining. Analogous to human lungs, in mice with tobacco-smoke-induced emphysema an up-regulation of S100A4 mRNA and protein was observed in intrapulmonary arteries. Putative HREs could be identified in the promoter region of the human S100A4 gene and their functionality was confirmed by mobility shift assay. Knock-down of HIF1/2 by siRNA attenuated hypoxia-dependent increase in S100A4 mRNA levels in human primary pulmonary artery smooth muscle cells. Interestingly, RAGE mRNA expression was enhanced in pulmonary arteries of tobacco-smoke exposed mice but not in pulmonary arteries of COPD patients.

Conclusions: As enhanced S100A4 expression was observed in remodeled intrapulmonary arteries of COPD patients, targeting S100A4 could serve as potential therapeutic option for prevention of vascular remodeling in COPD patients.

Keywords: COPD, Hypoxia-inducible factor, Pulmonary hypertension, Smooth muscle cell, S100A4, RAGE, Vascular remodeling

* Correspondence: Ludger.Fink@patho.med.uni-giessen.de

†Equal contributors

¹Excellence Cluster Cardio-Pulmonary System, Universities of Giessen and Marburg Lung Center, Member of the German Center for Lung Research (DZL), Justus-Liebig-University, Giessen, Germany

²Institute of Pathology and Cytology, UEGP, Forsthausstrasse 1, 35578 Wetzlar, Germany

Full list of author information is available at the end of the article

Background

Chronic obstructive pulmonary disease (COPD) is characterized by chronic airflow limitation and pathological changes in the lung and vascular system [1]. COPD encompasses chronic obstructive bronchitis and obstructive lung emphysema, which often interact. Chronic obstructive bronchitis is a chronic airway inflammation with loss of the mucociliary clearance, increased infect-exacerbation rate and bronchus wall instability. In many cases it is caused by smoking [1]. Chronic inflammation, imbalance of protease- and antiprotease activity, and lumen obstruction of small airways lead to destruction and loss of alveolar septa resulting in emphysema. Data from the Global initiative for chronic Obstructive Lung Disease (GOLD-report) estimated that up to 25 % of the adult population aged 40 years or older have COPD [1]. Based on this high prevalence, COPD is a common cause of death in industrialized countries [2]. The soaring burden of COPD is associated with the accumulate incidence of inhalation of tobacco smoke or other noxious particles [1]. Cigarette smoke is one of the highest risk factors known to actively cause the disease [3].

As not all smokers develop clinically significant COPD other factors such as oxidative stress, infection and genetic background contribute to the individual risk [1]. Together these mechanisms lead to the characteristic pathological change in COPD triggered by a chronic lung inflammation [1]. Mucus hypersecretion, extended inflammation and fibrosis in the small airways on the one hand, destruction and loss of alveolar septa on the other hand result in dyspnea and abnormal gas exchange [1]. Later on, these pathophysiological changes often cause pulmonary hypoxemia and hypercapnia [1, 4]. Additionally, a substantial number of COPD patients also suffer from an at least mild increase of pulmonary arterial pressure [5–7] and more than ten percent show a clinical significant pulmonary hypertension (PH), leading to shorter survival [4, 8–10]. Structural changes in pulmonary vascular remodeling include media hypertrophy, thickening of the intima with reduction of the lumen diameter and muscularization of small non-muscular arterioles [4]. Chronic hypoxia may be a trigger, but the vascular alterations appear already before the onset of respiratory insufficiency. Alternatively, cigarette smoke induced chronic inflammation, increase of reactive oxygen species, vascular shear stress and altered endothelial function may trigger the vascular alterations [4, 11].

S100A4 is a member of the S100 calcium-binding proteins [12]. S100A4 is involved in intra- and extracellular activities such as cell motility, angiogenesis, smooth muscle cell (SMC) migration and proliferation [13–15]. Additionally, a role in epithelial mesenchymal transition has been implicated [16, 17]. Lawrie et al. showed that SMC migration and proliferation depended on an autocrine or paracrine stimulation of the RAGE receptor (advanced

glycosylation end product-specific receptor) by S100A4 [14]. Furthermore about 5 % of transgenic mice overexpressing S100A4/Mts1 exhibit the formation of plexiform lesions with intima hyperplasia [18]. Utilizing the hypoxic mouse model of PH we have previously demonstrated a strong up-regulation of S100A4 during hypoxia exposure [19]. Expression of S100A4 was predominantly localized to the smooth muscle cells and to neomuscularized resistance vessels [19]. These data may point to the involvement of S100A4 in vascular remodeling. Therefore, the aim of the present study was to investigate S100A4 in the context of vascular remodeling within chronic obstructive pulmonary disease. The established mouse model of smoke-induced emphysema [20] was utilized to analyze the expression and specific localization of S100A4. Moreover, we investigated S100A4 in lung tissue samples from explanted COPD and non-transplanted donor lungs.

Methods

Tobacco smoke exposure of mice

Adult male wild type (WT) C57BL6/J mice (20–22 g) were obtained from Charles River Laboratories, Sulzfeld Germany. All experiments were approved by the governmental ethics committee for animal welfare (Regierungspräsidium Giessen, Germany). In a current study material from the same experimental animals was used as in Seimetz et al. [20]. Briefly, four mice each were randomly assigned to treatment (tobacco smoke exposure) and control (not exposed to smoke). Mice of the treatment groups were exposed to mainstream smoke of 3R4F cigarettes (University of Kentucky, Lexington, KY, USA) in a concentration of 140 mg particulate matter/m³ for 6 h/day, 5 days/week for three or eight months. Age matched control groups were kept under identical conditions but without smoke exposure. Morphometric and hemodynamic data from the same animals were shown previously [20]. In brief, these mice developed PH (reflected by increased right ventricular systolic pressure and vascular muscularization) already after 3 months of smoke exposure. In contrast, 8 months mice had not only fully developed PH but also emphysema (as shown by reduced lung function and increased mean linear intercept as well as decreased septal wall thickness). The smoke-exposed mice neither suffered from hypoxemia nor from hypoxia within the chamber during the smoke exposure as reflected by no changes in O₂ concentration.

Human tissues

Lung tissues were obtained from explanted lungs of COPD patients who underwent lung transplantation at the Department of Surgery, Division of Thoracic Surgery, Medical University of Vienna, Austria. Explanted lungs were collected at the time of transplantation. The

study was approved by the local ethics committees (Vienna, Austria and Giessen, Germany). Tissues from five patients with COPD (3 male, 2 female, mean age: 54.2 years, GOLD-Stage 3–4) and five control subjects of organ donors (3 male, 2 female, mean age: 44.4 years) were used. Gender and age of donors and COPD patients are given in the Additional files 1.

Laser-assisted microdissection

Intrapulmonary arteries with a diameter of 50–300 μm were microdissected by Microlaser Technology (P.A.L.M., Bernried, Germany) [21, 22]. Summarized information is provided in online data supplement.

RNA extraction

Total RNA was isolated with the RNeasy Kits (Qiagen, Hilden, Germany). For more details please refer to online data supplement.

cDNA synthesis

First strand cDNA from microdissected human tissues and mouse lung homogenate was generated as described previously [22]. For more details please refer to online data supplement.

Relative mRNA quantification by real-time PCR

Gene regulation was analyzed by real-time PCR using the 7900HT Real-Time PCR-System (PE Applied Biosystems, Foster City, USA). Normalized expression levels were measured by ΔC_T -values as described previously [19]. PBGD and B2M were used as reference genes [22, 23]. Melting curve analysis and gel electrophoresis was performed to confirm the exclusive amplification of the expected PCR product. Reaction mixtures, detailed cycling conditions, and primer sequences are provided in Additional file.

Immunohistochemistry

Murine cryo sections were incubated with rabbit polyclonal S100A4 antibody (Abcam, Cambridge, UK; 1:500 dilution in Real™ Antibody Diluent (Dako)). Human paraffin sections were incubated with rabbit polyclonal S100A4 antibody (Abcam; 1:700) in 10 % BSA (Sigma-Aldrich). For SMC staining rabbit polyclonal SMC α -actin antibody was used (NeoMarkers, Ferment, USA; 1:350). Anti-RAGE immunohistochemistry was performed on human and mouse paraffin sections (Abcam; 1:500). For detailed information please refer to Additional file 1.

Semi quantitative analysis of immunohistologically stained tissue sections

Pictures were taken with Discus software (Hilgers, Königswinter, Germany), stored in TIF files and analyzed for staining intensity by Adobe Photoshop® (Adobe System

GmbH, Munich, Germany) software. For detailed information please refer to online supplement.

Hypoxia response element (HRE)

Genomic sequence of human S100A4 was obtained from (<http://www.ncbi.nlm.nih.gov/mapview/>) and screened for presence of hypoxia response elements (HRE) 5000 bp downstream and upstream from coding sequence. The consensus sequence chosen for HRE was “ACGTGS”, where S can be G or C [24].

Cell culture

Primary PASMC were isolated from human pulmonary arteries from non-transplantable donor lungs. All experiments were performed with cells in passage three to six and growth arrested by serum deprivation for 24 h. For the investigation of the effect of hypoxia, cells were either exposed to 1 % O_2 (hypoxia) or to 21 % O_2 (normoxia) for 24 h. To control for non-specific gene inhibition of the siRNAs used in this study, a universal negative-control siRNA sequence was employed (Ambion, Austin, USA). Cells were transfected with siRNA (100 nM) using the X-treme Gene siRNA Transfection Reagent (Roche, Mannheim, Germany).

Nuclear extraction

Protein extract from human PASMC was isolated with the NE-PER Nuclear and Cytoplasmic Extraction Reagents (Pierce, Rockford, USA) following the instructions of the user manual.

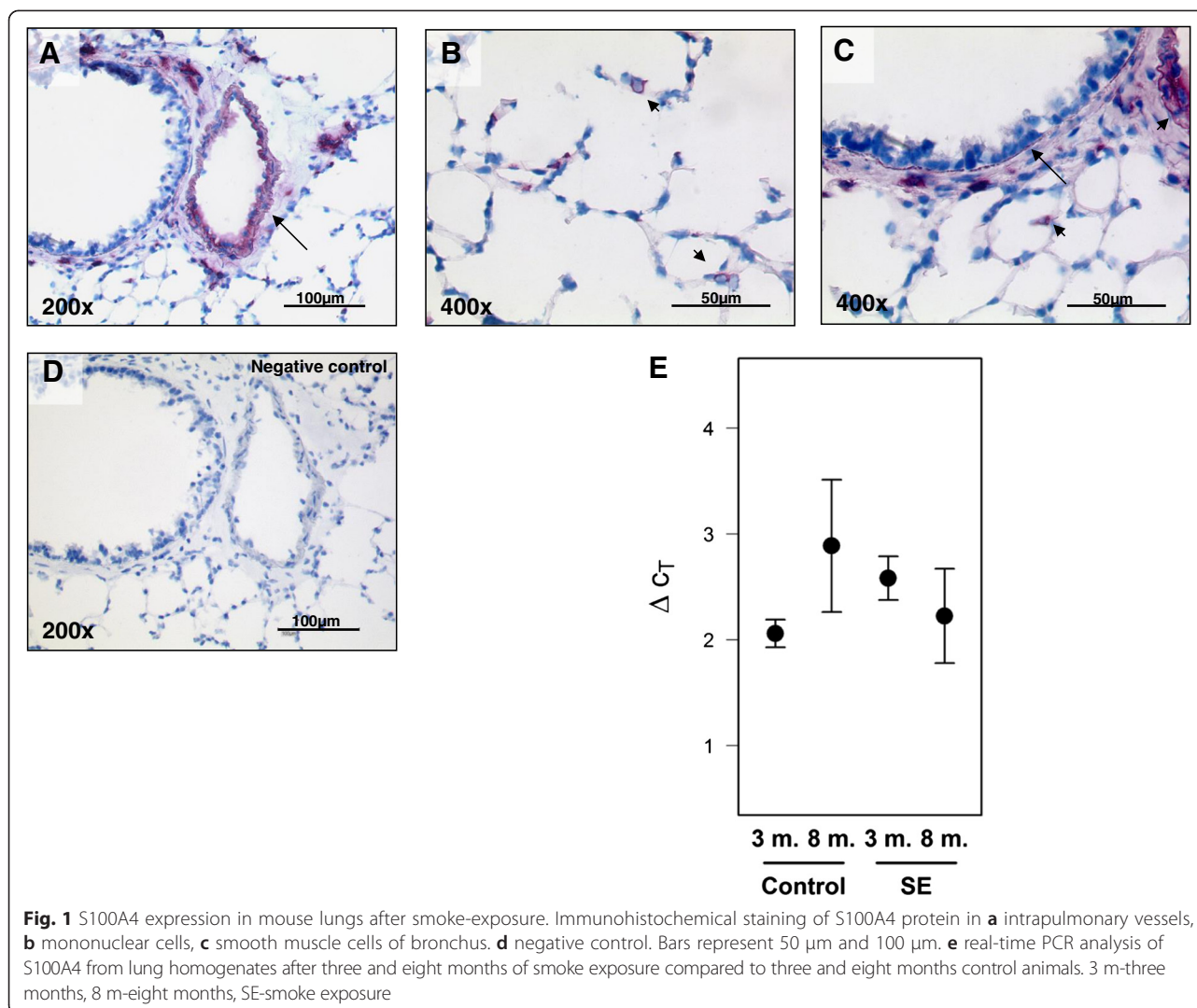
Electrophoretic Mobility Shift Assay (EMSA)

EMSA was performed with LightShift Chemiluminescent EMSA Kit (Pierce, USA) following the instructions of the user manual. Reaction mixtures and polyacrylamid gel preparation is provided in the Additional file 1.

Statistical analysis

Values are presented as mean \pm SEM. The analyses for statistical significance were calculated with the following tests: Figs. 1e and 2d: two-factorial ANOVA (time \times treatment), tested hypotheses: $\Delta\text{ct}(3 \text{ m, control}) - \Delta\text{ct}(3 \text{ m, se}) = 0$, $\Delta\text{ct}(8 \text{ m, control}) - \Delta\text{ct}(8 \text{ m, se}) = 0$. Note: neither interaction nor main effects were of interest. Since the data from the microdissected samples did not show any recognizable difference between the two controls (3 and 8 months), the effect after 8 months SE data was additionally estimated using the pooled data of these controls.

Figs. 3c, 4c, 5c, 6c, 7a, Two-sample *t*-test (two-sided). Fig. 7f Dunnett's multiple-to-one tests against siR (two-sided).



Results

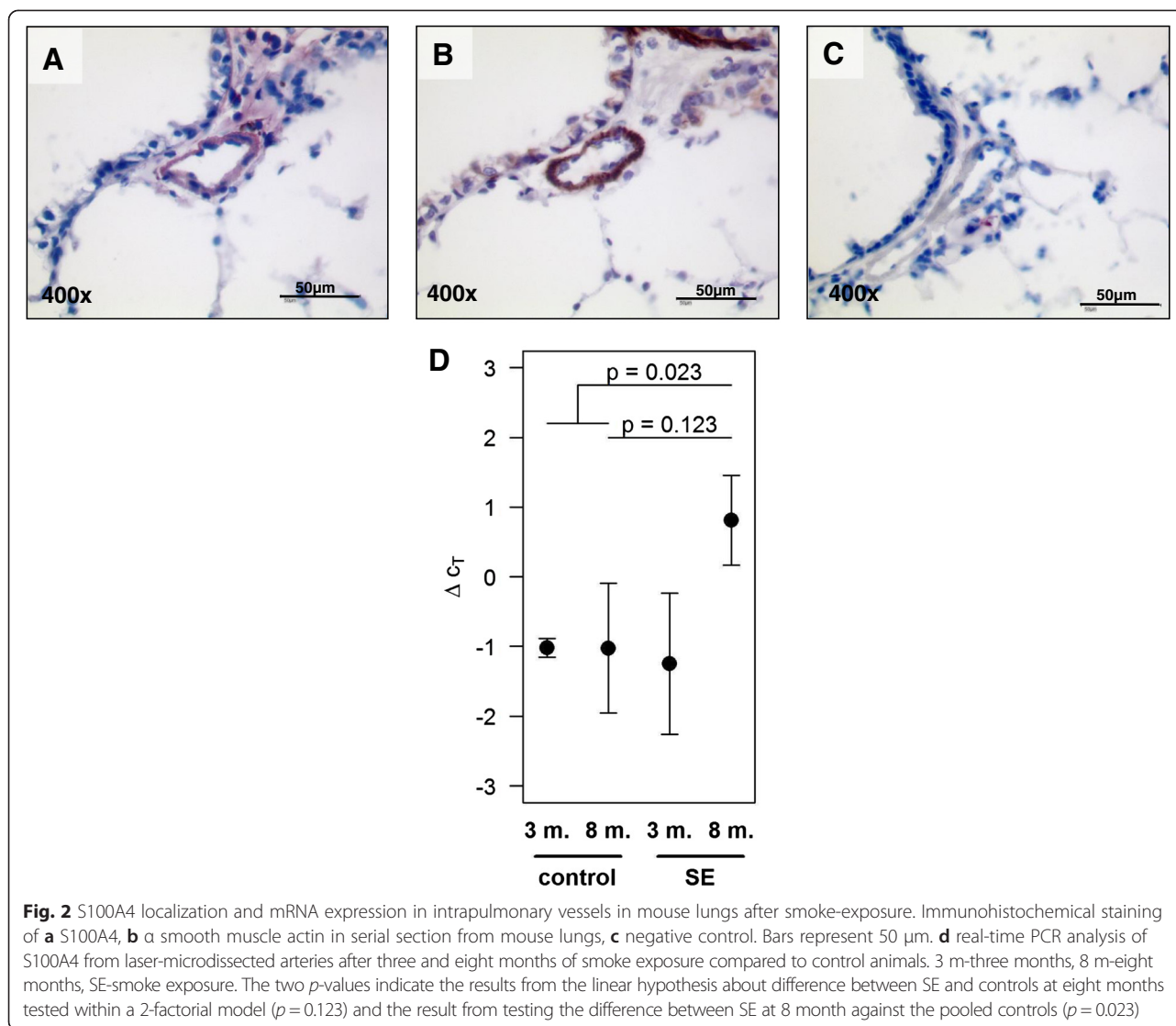
S100A4 localization and expression in the tobacco-smoke induced murine model of emphysema

Initially we examined the pattern of S100A4 expression in mouse lungs after three and eight months of smoke exposure by immunohistochemical staining. Lungs from both treated and control mice, exhibited similar localization. Strong staining was observed in intrapulmonary arteries, in mononuclear cells located in alveolar septa, as well as in the thin muscular layer of bronchi (Fig. 1a–d). Furthermore we quantified the mRNA expression of S100A4 in lung homogenates of the treated mice compared to respective control animals. As assessed by real-time PCR analysis, there was no significant change in the mRNA level of S100A4 in lung homogenates after three months (2.58 ± 0.21 ; $p = 0.06$) or eight months of smoke exposure (2.22 ± 0.45 ; $p = 0.44$) compared to

control animals (2.06 ± 0.13 after 3 months; 2.89 ± 0.69 after 8 months) (Fig. 1e).

S100A4 expression of intrapulmonary arteries in the tobacco-smoke induced murine model of emphysema

In all lungs, specific immune reactivity for the S100A4 protein was observed predominantly in the vascular compartment (Fig. 2a). Immunostaining of adjacent sections with α -smooth muscle actin (SMA) further showed that S100A4 expression occurred in a similar spatial pattern, supporting its predominant expression in the media layer of the arterial wall (Fig. 2b). As strong immunoreactivity of S100A4 was observed in the vasculature wall, we performed laser-microdissection of intrapulmonary arteries with a diameter of 50–300 μm for specific analysis of this compartment. No significant regulation of S100A4 mRNA was detected in microdissected arteries after three months



of smoke exposure (-1.25 ± 1.01 ; $p = 0.89$). In contrast a very strong increase in S100A4 mRNA was observed after eight months of smoke exposure. The effect of smoke exposure was estimated as 1.8 with a 95 % confidence interval from -0.6 to $+4.3$ ($p = 0.123$). The large uncertainty was due to the very small sample size of 8-month controls ($n = 3$). Since the mean values of the controls were very similar at both time points (-1.023 and -1.025 for 3 and 8 months, respectively), the analysis was repeated with pooled data for the controls, leading to an estimated effect of 1.8 with a 95 % confidence interval from $+0.31$ to $+3.36$ ($p = 0.023$) (Fig. 2d).

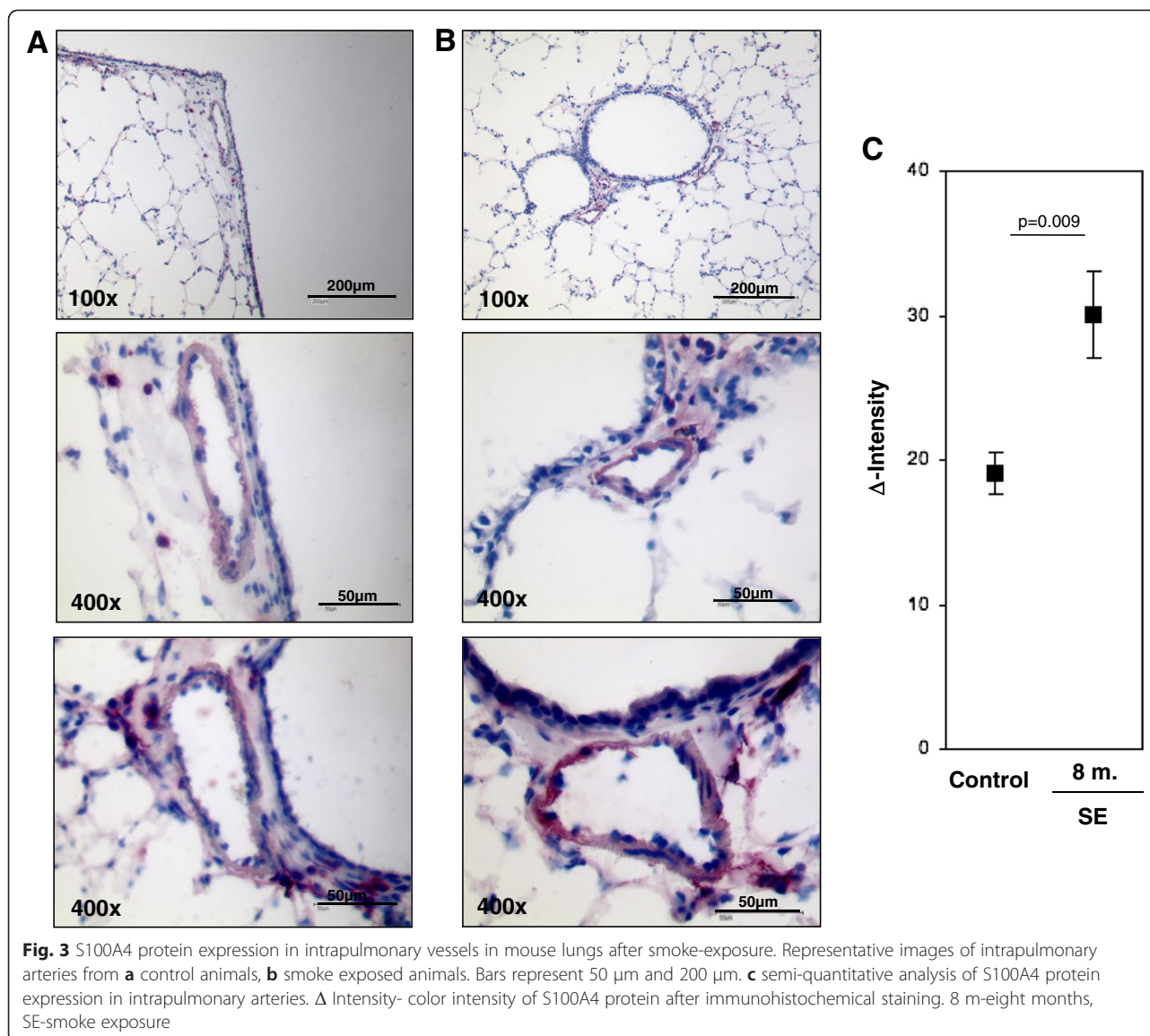
Semi-quantitative S100A4 protein analysis in pulmonary arteries

The expression of S100A4 protein was further evaluated by immunohistochemical analysis of cryo sections from

four lungs after eight months of smoke inhalation and eight control lungs. Similar to small resistant vessels, S100A4 was also expressed in vessels with a diameter >150 µm. To ensure representative measurements, ten vessels with a diameter between 25–250 µm from each animal were randomly selected. Semi-quantitative analysis of the color intensities revealed increased S100A4 protein levels in the vasculature wall in the animals after eight months of smoke exposure (mean Δ intensity \pm sem: 30.105 ± 2.99) as compared to controls (mean Δ intensity \pm sem: 19.11 ± 1.43 ; $p = 0.009$) (Fig. 3a–c).

S100A4 localization and expression in chronic obstructive pulmonary disease

In addition to the experimental emphysema mouse model, we examined the localization and expression of S100A4 in patients suffering from COPD. In the human lung sections,

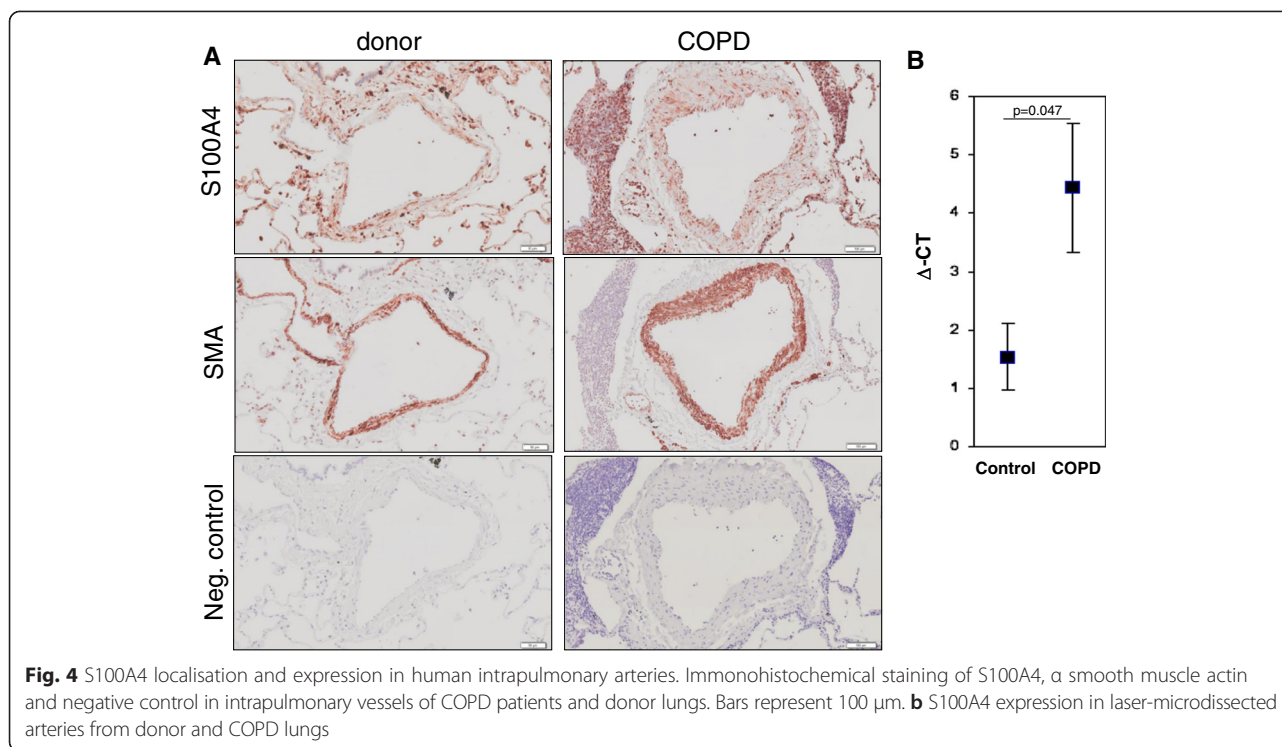


S100A4 was predominantly expressed in the vessels (Fig. 4a–c and Fig. 5ab). Immunoreactivity was most intense within the tunica media of pulmonary arteries. S100A4 protein was not only located in the media of occlusive arteries but also in neo-muscularized vessels with a diameter below 50 μm . S100A4 expression exhibited a similar spatial pattern to α -SMA supporting its predominant expression in pulmonary SMC (Fig. 4a–c). Consequently, laser-assisted microdissection of intrapulmonary arteries in combination with real-time PCR was performed for a compartment-specific analysis of mRNA expression. S100A4 mRNA expression was higher in arteries from the lungs of COPD patients (mean $\Delta\text{Ct} \pm \text{sem}$: 4.44 ± 0.56) as compared to healthy donors lungs (mean $\Delta\text{Ct} \pm \text{sem}$: 1.54 ± 1.1 ; $p = 0.047$) (Fig. 4d). Furthermore, semi-quantitative immunohistochemical analysis revealed an increased S100A4 protein level in intrapulmonary arteries

from COPD-patients (mean Δ intensity \pm sem: 25.29 ± 2.8) in contrast to healthy control lungs (mean Δ intensity \pm sem: 9.9 ± 5.6 ; $p = 0.032$) (Fig. 5c).

RAGE expression in tobacco-smoke induced murine model of emphysema and in human COPD lung tissue

Lawrie et al. indicated that RAGE could be the receptor for S100A4 [14]. Therefore, we examined whether the expression of RAGE was changed in murine model of emphysema and human COPD lungs. In the mouse lung sections, RAGE positivity was ubiquitously present throughout the tissue (Fig. 6a). Laser-microdissection of intrapulmonary arteries followed by microarray analysis (Agilent 4×44 k Human Genome Microarrays. Catalog no. G4112F, design-ID 014850); $n = 3$ animals each, data not shown in detail) revealed significantly increased levels of RAGE mRNA (3 months smoke exposure:



Log fold change: 4.9, $p = 0.000003$ and 8 months smoke exposure: Log fold change: 5.2, $p = 0.0000006$). In contrast, although high positivity of RAGE was observed in intrapulmonary arteries of COPD lungs (Fig. 6b), the mRNA levels were comparable to controls (Fig. 6c).

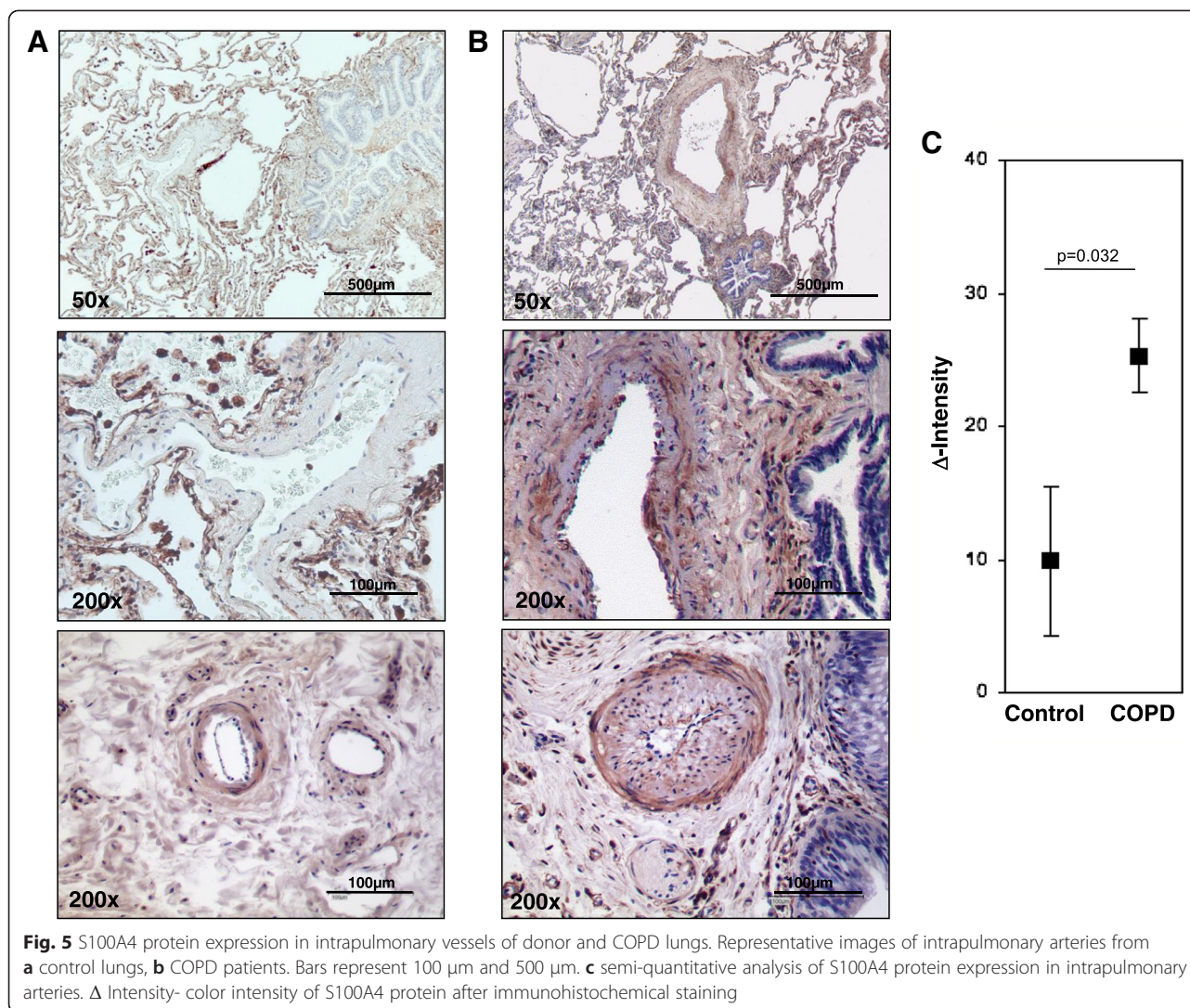
Hypoxia-dependent S100A4 regulation in primary PASMC

Immunofluorescence analysis of S100A4 in human primary PASMC revealed that S100A4 was localized to the cytoplasm and nucleus (Fig. 7b). As almost all end stage COPD patients suffer from hypoxemia [25] we examined whether hypoxia can influence S100A4 regulation. S100A4 mRNA expression was increased in PASMC cultured under hypoxic (1 % O₂) conditions for 24 h (mean $\Delta\text{Ct} \pm \text{sem}$: 2.45 ± 0.2) compared to normoxia (21 % O₂) (mean $\Delta\text{Ct} \pm \text{sem}$: 1.4 ± 0.3 ; $p = 0.028$) (Fig. 7a). Due to this hypoxia-dependent regulation of S100A4, the murine and human S100A4 genes were screened for the presence of putative hypoxia response elements (HREs) at a distance of 5 kb upstream and downstream of the coding region. These HREs are of particular interest, as their presence is required for the regulation of mRNA expression by the hypoxia-inducible factors HIF-1 and HIF-2. Importantly, HIF-1/2 are not only stabilized under hypoxic conditions but also under normoxia in the presence of ROS [26] that further underlines the importance of this transcription factor in gene regulation in conditions such as tobacco smoke exposure. Computational analysis of the S100A4 gene was employed to detect the consensus sequence of

the HREs (ACGTGS, with S being either G or C). Three and two consensus sequences were found in the sense strand of both, human and murine promoter, respectively. The HREs were located at positions -1498 (**tacgtgcg**), 207 (**tacgtgct**) in murine and at -4694 [HRE-1] (**ccacgtgct**), 857 [HRE-2] (**ccacgccc**) and 1359 [HRE-3] (**ggcgtggg**) in human sequence (Fig. 7c). The putative HREs [1–3] in S100A4 non-coding sequence were analyzed by EMSA utilizing human PASMC kept under normoxia or hypoxia (1 % O₂) for 24 h. EMSA revealed a specific binding of HIF to human HREs only at position -4694 and 857 (Fig. 7d). Preincubation with HIF1 α or HIF2 α antibodies led to disappearance of the shift band, which might be a result of blocking DNA-protein-complex by HIF antibody (Fig. 7e). The HIF-dependent S100A4 expression regulation was further investigated by siRNA studies. Pretreatment of human PASMC with siRNA against HIF-1 α or HIF-2 α attenuated hypoxia-dependent up-regulation of S100A4 (Fig. 7d). As the promoter of S100A4 does not contain any Egr-1 consensus sequences (gcggggcg), siRNA against Egr-1 served as a negative control. As depicted in Fig. 7d, siEgr1 did not influence hypoxia-dependent regulation of S100A4. The overlay of S100A4 and SMC-actin immunofluorescence confirmed co-expression of both proteins in the same smooth muscle cell (Fig. 7g).

Discussion

In COPD, PH is one of the most frequent complications associated with shorter survival rates [4, 25]. PH has been



recognized as one of the predictive factors that is connected with worse clinical outcomes [1, 7, 27]. However, the pathophysiological origin of PH in COPD is mostly unknown. One of the main pathophysiological changes is the remodeling of pulmonary arteries [27]. Previous investigations have shown that vascular alterations and PH precede lung emphysema development in human and animals [20, 28, 29]. Several studies have indicated a possible role of S100A4, a member of the calcium binding proteins, in non-COPD associated forms of PH. Children with congenital heart disease show PH with pulmonary vascular lesions and an increase in S100A4 expression [18]. Furthermore, it has been hypothesized that the S100A4 protein regulates the motility of cells by controlling the cytoskeletal dynamics and promoting SMC proliferation [30]. In the current study we have shown an up-regulation of S100A4 mRNA in microdissected intrapulmonary arteries from explanted end-stage COPD patients. High S100A4 expression was observed in pulmonary arteries not only

located in the media of occlusive arteries but also in neo-muscularized vessels with a diameter of $\sim 50 \mu\text{m}$. These findings may point to a role of S100A4 in vascular remodeling.

Patients with end-stage COPD and cor pulmonale have a frequent occurrence of hypoxemia in the lungs [25]. Post-mortem studies and analysis of explant lungs have shown the accumulation of smooth muscle cells in the media layer, together with thickening and fibrosis of the intima in pulmonary muscular arteries in these patients [4, 31]. Hypoxic conditions induce up-regulation of S100A4 that is correlated with a thickening of the media layer in intrapulmonary arteries [19]. Up-regulation under hypoxia is induced via HIF transcription factors. While HIF-1 β is constitutively expressed in many cell types, HIF-1 α is rapidly degraded by ubiquitin-proteasome system under normoxia. Under hypoxic conditions, HIF-1 α is stabilized and can form heterodimers with HIF-1 β . Upon translocation to the nucleus, they bind to HREs in the promoter region of the target genes

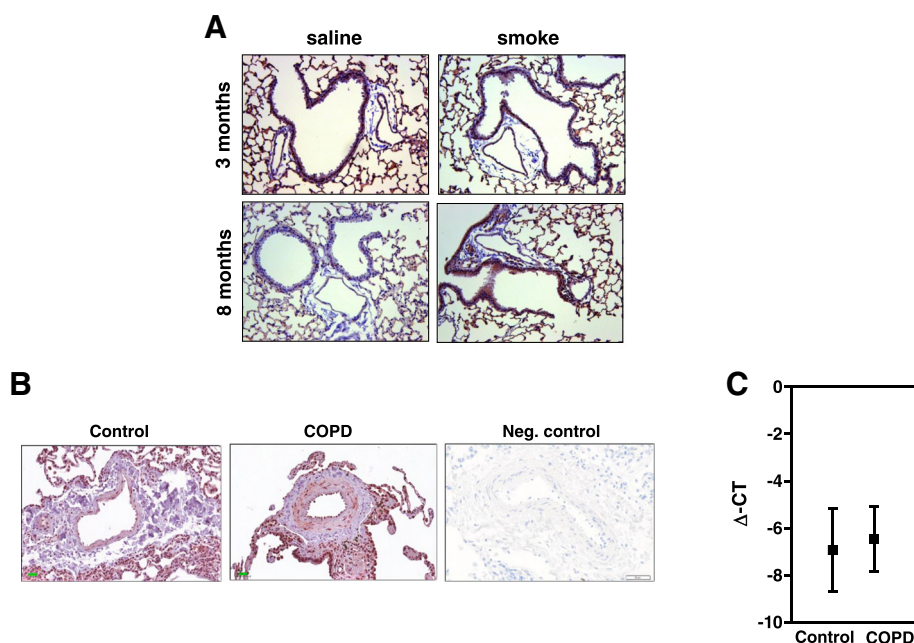


Fig. 6 RAGE mRNA and protein expression in murine emphysema model and human COPD. **a** Representative images of intrapulmonary arteries from control and from 3 and 8 month smoke exposed animals. **b** Representative images of intrapulmonary arteries from control and COPD patients. Bars represent 100 μ m. **c** RAGE expression in laser-microdissected arteries from donor and COPD lungs

[11, 32]. We and others have demonstrated that S100A4 transcription is enhanced via HIF stabilization and promoter binding [33]. However, recent studies point out that remodeling is not exclusive to patients with advanced disease as it has also been shown in patients with mild COPD who do not exhibit hypoxaemia [28, 29, 34]. Barberà et al. [4] showed vascular remodeling in smokers with normal lung function or mild COPD-patients without hypoxia indicating that other mechanisms than hypoxaemia are causative for PH in COPD in earlier stages [4].

Cigarette smoking is one of the most important risk factors for COPD [1, 3]. There are few animal models which imitate the pathological changes seen in COPD [35]. One of the most accepted models is the exposure of animals to cigarette smoke, which appears to be one of the best approximations to the human disease [35]. Typical pathological changes of the human COPD such as emphysema, and PH are also seen in this model [20, 34]. Similar to our observations in sections from COPD patients, mice exposed to 8 month cigarette smoke showed considerable up-regulation of S100A4 mRNA in intrapulmonary arteries, a time-point which largely reflects the characteristics of human COPD. Furthermore, strong immune reactivity for S100A4 protein in the vascular compartment, especially in the media layer was observed. As we have shown previously, in our model mice exposed to cigarette smoke do not suffer from hypoxemia [20], the hypoxia stimulus for induction of S100A4 expression can be excluded in this model. This supports the hypothesis

that S100A4 may be involved in early vascular remodeling even in non-hypoxic, mild COPD-stages. But what is the mechanism behind the up-regulation of S100A4 in absence of hypoxia? We could show that human S100A4 gene contains functional putative HREs in its promoters and that siRNA-knockdown of HIF-1/2 decreases S100A4 expression in human PASMC. It is well recognized that HIF-1/2 is not only stabilized under hypoxic conditions but also under normoxia in the presence of ROS [26, 36–38]. Regarding the origin of ROS, Guo et al. showed that nicotine, a major component of cigarette smoke, induces HIF-1 α expression via mitochondrial reactive oxygen species in human non-small cell lung cancer cells [38]. In addition, ROS may be derived directly from mainstream smoke that exist mainly in the gaseous phase [26, 38–40]. ROS may activate Erk-5 (BMK-1) via c-Src kinase, which is thought to be an activator kinase of HIF-1 α [26]. Alternatively, direct induction of HIF1 α by nicotine via acetylcholine receptor-mediated signaling cascades, including the Ca²⁺/calmodulin, c-Src, protein kinase C, phosphatidylinositol 3-kinase, MAP kinase/Erk 1/2 was shown [41]. Finally, a HIF independent but ROS dependent regulation of S100A4 has already been postulated. ROS induces the translocation of phospho-ERK to the nucleus leading to GATA-4 phosphorylation with subsequent S100A4 production [14]. Subsequent interaction with RAGE induces SMC proliferation and migration [14, 42]. In line with this finding, we could observe increased mRNA RAGE expression in the pulmonary

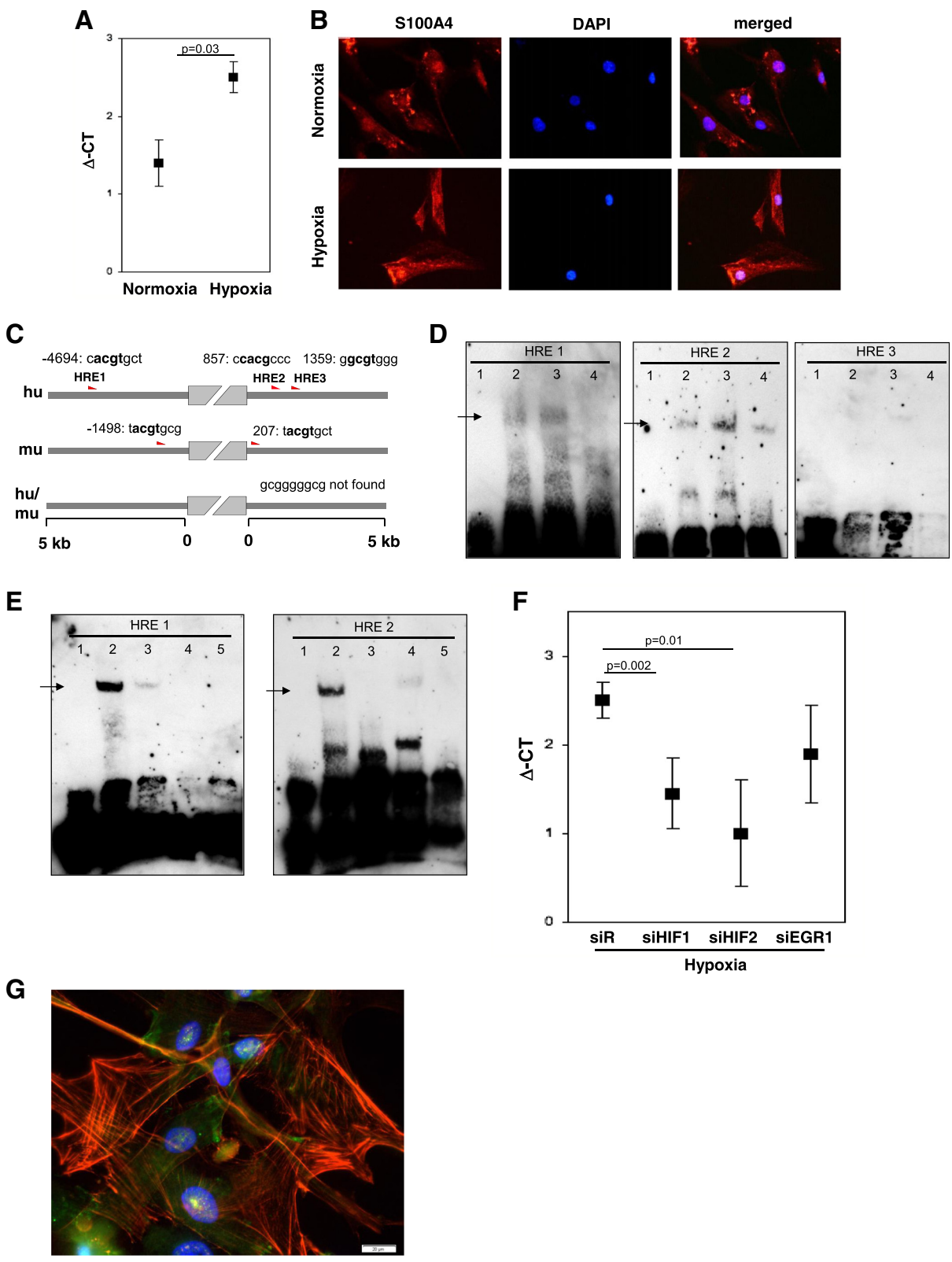


Fig. 7 (See legend on next page.)

(See figure on previous page.)

Fig. 7 Hypoxia-dependent S100A4 expression in human primary pulmonary arterial cells. **a** Real-time analysis of S100A4 expression in human PASMC after normoxia and hypoxia exposure (24 h). **b** Representative images of S100A4 immunofluorescence labeling in human PASMC after normoxia and hypoxia treatment. **c** Schematic representation of potential HRE in upstream and downstream sequence from S100A4 coding site. **d** EMSA analyses of potential HREs [HRE1:-4694, HRE2:857, HRE3:1359]. Slots were loaded as follows: 1: Labeled Probe only, 2: Labeled Probe and Nuclear extract (24 h normoxia), 3 Labeled Probe, Nuclear extract (24 h hypoxia), 4: Labeled Probe, Nuclear extract (24 h hypoxia) and Competitor. **e** Supershift analysis: 1: Labeled Probe only, 2: Labeled Probe and Nuclear extract (24 h hypoxia), 3 Labeled Probe, Nuclear extract (24 h hypoxia) and Competitor, 4: Labeled Probe, Nuclear extract (24 h hypoxia) and Antibody against HIF-1, 5: Labeled Probe, Nuclear extract (24 h hypoxia) and Antibody against HIF-2. Arrows represent specific band. **f** Real-time analysis of S100A4 expression after pretreatment of human PASMC with siRNA against HIF1, HIF2 or EGR1. Δ Ct- relative expression of S100A4 to reference gene. siR- siRandom. **g** Immunofluorescence labeling of S100A4, SMC-actin and DAPI

arteries of the mouse emphysema model. Although we could not detect differences in RAGE expression between COPD and donors, similar to others [43, 44] we could show RAGE positivity in SMC layer. Of note, systemic soluble RAGE has been suggested as a biomarker as the severity of emphysema was associated with lower levels of sRAGE [45]. Meloche J et al. demonstrated that S100A4 stimulation recapitulated the PAH phenotype of PASMC and that RAGE inhibition attenuated PH in vivo [42]. However, whether the up-regulation of S100A4 in remodeled arteries of COPD lungs is signaled in absence of hypoxia via ROS and HIF has to be determined in further studies.

Conclusions

We verified a significant up-regulation of S100A4 mRNA level in intrapulmonary vessels of mice after eight month of smoke exposure via laser- microdissection and real-time PCR. On protein level, upregulation of S100A4 was confirmed by semi-quantitative analysis of immunohistochemical labeling. Importantly, we could show an analogous upregulation of S100A4 mRNA and protein in intrapulmonary arteries of COPD-patients. Our results allow us to speculate that a vascular remodeling even in non-hypoxic COPD-stages might involve S100A4. These findings may advance the search for new and effective strategies in the treatment of COPD associated vascular remodeling/pulmonary hypertension.

Additional files

Additional file 1: Supplemental information about data collection, material and methods. (PDF 567 kb)

Abbreviations

COPD: Chronic obstructive pulmonary disease; Egr: Early growth response; EMSA: Electrophoretic mobility shift assay; HIF: Hypoxia inducible factor; HRE: Hypoxia responsive element; PASMC: Pulmonary artery smooth muscle cells; PCR: Polymerase chain reaction; PH: Pulmonary hypertension; RAGE: Receptor for advanced glycation end products; ROS: Reactive oxygen species; RT: Reverse transcription; SMA: Smooth muscle actin.

Authors' contributions

SR carried out laser microdissection, real time RT-PCR, semi-quantitative analysis of immunohistochemistry and EMSA. IL, RT carried out immunohistochemistry labeling and siRNA knock-down. JW performed the statistical analysis and

screened the DNA sequence for HREs. MS and MB provided the mice tissue. WK and BG provided the human lung samples. JH performed immunohistochemistry labeling, WS and NW participated in the design of the study. NW provided the mouse model of emphysema. LF, GK conceived of the study, participated in its design and coordinated the experiments, and drafted the manuscript. All authors read and approved the final manuscript.

Competing interests

The authors declare that they have no competing interests.

Acknowledgements

We thank M. Stein and K. Quanz for excellent technical assistance, and N. Parajuli for skillful help with the smoke machine. This work was funded by the German Research Foundation, Excellence Cluster Cardiopulmonary System (ECCPS), the German Center for Lung Research (DZL), and the State of Hessen (LOEWE).

Author details

¹Excellence Cluster Cardio-Pulmonary System, Universities of Giessen and Marburg Lung Center, Member of the German Center for Lung Research (DZL), Justus-Liebig-University, Giessen, Germany. ²Institute of Pathology and Cytology, UEGP, Forsthausstrasse 1, 35578 Wetzlar, Germany. ³Ludwig Boltzmann Institute for Lung Vascular Research, Graz, Austria. ⁴Department of Thoracic Surgery, Division of Surgery, Medical University Vienna, Vienna, Austria.

Received: 28 December 2014 Accepted: 1 October 2015

Published online: 20 October 2015

References

- GOLDCOPD: From the Global Strategy for the Diagnosis, Management and Prevention of COPD. Updated 2014. [http://www.goldcopd.org/uploads/users/files/GOLD_Report_2014_Jun11.pdf].
- WHO: World health statistics 2008. [www.who.int/whosis/whostat/EN_WHS08_Full.pdf].
- United States Department of Health and Human Services. The Health Consequences of Smoking—50 Years of Progress: A Report of the Surgeon General, 2014. [<http://www.surgeongeneral.gov/library/reports/50-years-of-progress/index.html>].
- Barberà JA, Peinado VI, Santos S. Pulmonary hypertension in chronic obstructive pulmonary disease. *Eur Respir J*. 2003;21:13.
- Minai OA, Chaouat A, Adnot S. Pulmonary hypertension in COPD: epidemiology, significance, and management: pulmonary vascular disease: the global perspective. *Chest*. 2010;137:395–515.
- Thabut G, Dauriat G, Stern JB, Logeart D, Lévy A, Marrash-Chahla R, et al. Pulmonary hemodynamics in advanced COPD candidates for lung volume reduction surgery or lung transplantation. *Chest*. 2005;127:1531–6.
- Hoepfer MM, Barberà JA, Channick RN, Hassoun PM, Lang IM, Manes A, et al. Diagnosis, assessment, and treatment of non-pulmonary arterial hypertension pulmonary hypertension. *J Am Coll Cardiol*. 2009;30:85–96.
- Weissmann N, Sommer N, Schermuly RT, Ghofrani HA, Seeger W, Grimminger F. Oxygen sensors in hypoxic pulmonary vasoconstriction. *Cardiovasc Res*. 2006;71:620–9.
- Ghofrani HA, Voswinckel R, Reichenberger F. Hypoxia-and non-hypoxia-related pulmonary hypertension-Established and new therapies. *Cardiovasc Res*. 2006;72:30–40.

10. Galie N, Hoeper MM, Humbert M, Torbicki A, Vachiery JL, Barbera JA, et al. Guidelines for the diagnosis and treatment of pulmonary hypertension: The Task Force for the Diagnosis and Treatment of Pulmonary Hypertension of the European Society of Cardiology (ESC) and the European Respiratory Society (ERS), endorsed by the International Society of Heart and Lung Transplantation (ISHLT). *Eur Heart J*. 2009;30:2493–537.
11. Semenza GL. HIF-1: mediator of physiological and pathophysiological responses to hypoxia. *J Appl Physiol*. 2000;88:1474–80.
12. Pathuri P, Voegelé L, Luecke H. Crystal structure of metastasis-associated protein S100A4 in the active calcium-bound form. *J Mol Biol*. 2008;383:62–77.
13. Ambartsumian N, Klingelhöfer J, Grigorian M, Christensen C, Krijavcica M, Tulchinsky E, et al. The metastasis-associated Mts1 (S100A4) protein could act as an angiogenic factor. *Oncogene*. 2001;20:4685–95.
14. Lawrie A, Spiekerkoetter E, Martinez EC, Ambartsumian N, Sheward WJ, MacLean MR, et al. Interdependent serotonin transporter and receptor pathways regulate S100A4/Mts1, a gene associated with pulmonary vascular disease. *Circ Res*. 2005;97:227–35.
15. Bowers RR, Manevich Y, Townsend DM, Tew KD. Sulfiredoxin redox-sensitive interaction with S100A4 and non-muscle myosin IIA regulates cancer cell motility. *Biochemistry*. 2012;51:7740–54.
16. Xu X, Su B, Xie C, Wei S, Zhou Y, Liu H, et al. Sonic hedgehog-Gli1 signaling pathway regulates the epithelial mesenchymal transition (EMT) by mediating a new target gene, S100A4, in pancreatic cancer cells. *PLoS One*. 2014;9:e96441.
17. Sohal SS, Reid D, Soltani A, Ward C, Weston S, Muller HK, et al. Evaluation of epithelial mesenchymal transition in patients with chronic obstructive pulmonary disease. *Respir Res*. 2011;12:130.
18. Greenway S, van Suylen RJ, Du Marchie SG, Kwan E, Ambartsumian N, Lukanidin E, et al. S100A4/Mts1 produces murine pulmonary artery changes resembling plexogenic arteriopathy and is increased in human plexogenic arteriopathy. *Am J Pathol*. 2004;164:253–62.
19. Kwapiszewska G, Wilhelm J, Wolff S, Laumanns I, Koenig IR, Ziegler A, et al. Expression profiling of laser-microdissected intrapulmonary arteries in hypoxia-induced pulmonary hypertension. *Respir Res*. 2005;6:109–25.
20. Seimetz M, Parajuli N, Pichl A, Veit F, Kwapiszewska G, Weisel FC, et al. Inducible NOS inhibition reverses tobacco-smoke-induced emphysema and pulmonary hypertension in mice. *Cell*. 2011;147:293–305.
21. Fink L, Kinfe T, Stein MM, Ermert L, Hanze J, Kummer W, et al. Immunostaining and laser-assisted cell picking for mRNA analysis. *Lab Invest*. 2000;80:327–33.
22. Fink L, Stahl U, Ermert L, Kummer W, Seeger W, Bohle RM. Rat porphobilinogen deaminase gene: a pseudogene-free internal standard for laser-assisted cell picking. *BioTechniques*. 1999;26:510–6.
23. Ord JJ, Streeter EH, Roberts IS, Cranston D, Harris AL. Comparison of hypoxia transcriptome in vitro with in vivo gene expression in human bladder cancer. *Br J Cancer*. 2005;93:346–54.
24. Hanze J, Eul BG, Savai R, Krick S, Goyal P, Grimminger F, et al. RNA interference for HIF-1 α inhibits its downstream signalling and affects cellular proliferation. *Biochem Biophys Res Commun*. 2003;312:571–7.
25. Weitzenblum E, Hirth C, Ducolone A, Mirhom R, Rasaholinjanahary J, Ehrhart M. Prognostic value of pulmonary artery pressure in chronic obstructive pulmonary disease. *Thorax*. 1981;36:752–8.
26. Jung SN, Yang WK, Kim J, Kim HS, Kim EJ, Yun H, et al. Reactive oxygen species stabilize hypoxia-inducible factor-1 α protein and stimulate transcriptional activity via AMP-activated protein kinase in DU145 human prostate cancer cells. *Carcinogenesis*. 2008;29:713–21.
27. Burger CD. Pulmonary hypertension in COPD: a review and consideration of the role of arterial vasodilators. *COPD*. 2009;6:137–44.
28. Santos S, Peinado VI, Ramirez J, Melgosa T, Roca J, Rodriguez-Roisin R, et al. Characterization of pulmonary vascular remodelling in smokers and patients with mild COPD. *Eur Respir J*. 2002;19:632–8.
29. Barberà JA, Riverola A, Roca J, Ramirez J, Wagner PD, Ros D, et al. Pulmonary vascular abnormalities and ventilation-perfusion relationships in mild chronic obstructive pulmonary disease. *Am J Respir Crit Care Med*. 1994;149:423–9.
30. Krijavcica M, Tarabykina S, Bronstein I, Maitland N, Lomonosov M, Hansen K, et al. Metastasis-associated Mts1 (S100A4) protein modulates protein kinase C phosphorylation of the heavy chain of nonmuscle myosin. *J Biol Chem*. 1998;273:9852–6.
31. Hoffmann J, Wilhelm J, Marsh LM, Ghanim B, Klepetko W, Kovacs G, et al. Distinct differences in gene expression patterns in pulmonary arteries of patients with chronic obstructive pulmonary disease and idiopathic pulmonary fibrosis with pulmonary hypertension. *Am J Respir Crit Care Med*. 2014;190:98–111.
32. Köhl R, Zhou J, Brüne B. Reactive oxygen species attenuate nitric-oxide-mediated hypoxia-inducible factor-1 α stabilization. *Free Radic Biol Med*. 2006;40:1430–42.
33. Horiuchi A, Hayashi T, Kikuchi N, Hayashi A, Fuseya C, Shiozawa T, et al. Hypoxia upregulates ovarian cancer invasiveness via the binding of HIF-1 α to a hypoxia-induced, methylation-free hypoxia response element of S100A4 gene. *Int J Cancer*. 2012;131:1755–67.
34. Weitzenblum E, Schrijen F, Mohan-Kumar T, Colas des Francs V, Lockhart A. Variability of the pulmonary vascular response to acute hypoxia in chronic bronchitis. *Chest*. 1988;94:772–8.
35. Wright JL, Cosio M, Churg A. Animal models of chronic obstructive pulmonary disease. *Am J Physiol Lung Cell Mol Physiol*. 2008;295:L1–15.
36. Springer J, Fischer A. Substance P-induced pulmonary vascular remodelling in precision cut lung slices. *Eur Respir J*. 2003;22:596–601.
37. Brüne B, Zhou J. Hypoxia-inducible factor-1 α under the control of nitric oxide. *Methods Enzymol*. 2007;435:463–78.
38. Guo L, Li L, Wang W, Pan Z, Zhou Q, Wu Z. Mitochondrial reactive oxygen species mediates nicotine-induced hypoxia-inducible factor-1 α expression in human non-small cell lung cancer cells. *Biochim Biophys Acta*. 2012;1822:852–61.
39. Baglolle CJ, Bushinsky SM, Garcia TM, Kode A, Rahman I, Sime PJ, et al. Differential induction of apoptosis by cigarette smoke extract in primary human lung fibroblast strains: implications for emphysema. *Am J Physiol Lung Cell Mol Physiol*. 2006;291:L19–29.
40. Huang MF, Lin WL, Ma YC. A study of reactive oxygen species in mainstream of cigarette. *Indoor Air*. 2005;15:135–40.
41. Zhang Q, Tang X, Zhang ZF, Velikina R, Shi S, Le AD. Nicotine induces hypoxia-inducible factor-1 α expression in human lung cancer cells via nicotinic acetylcholine receptor-mediated signaling pathways. *Clin Cancer Res*. 2007;13:4686–94.
42. Meloche J, Courchesne A, Barrier M, Carter S, Bissierier M, Paulin R, et al. Critical role for the advanced glycation end-products receptor in pulmonary arterial hypertension etiology. *J Am Heart Assoc*. 2013;2:e005157.
43. Zabini D, Crnkovic S, Xu H, Tscherner M, Ghanim B, Klepetko W, et al. High-mobility group box-1 induces vascular remodelling processes via c-Jun activation. *J Cell Mol Med*. 2015;19:1151–61.
44. Dempsey Y, Nilsen M, White K, Mair KM, Loughlin L, Ambartsumian N, et al. Development of pulmonary arterial hypertension in mice over-expressing S100A4/Mts1 is specific to females. *Respir Res*. 2011;12:159.
45. Cheng DT, Kim DK, Cockayne DA, Belousov A, Bitter H, Cho MH, et al. Systemic soluble receptor for advanced glycation endproducts is a biomarker of emphysema and associated with AGER genetic variants in patients with chronic obstructive pulmonary disease. *Am J Respir Crit Care Med*. 2013;188:948–57.

Submit your next manuscript to BioMed Central and take full advantage of:

- Convenient online submission
- Thorough peer review
- No space constraints or color figure charges
- Immediate publication on acceptance
- Inclusion in PubMed, CAS, Scopus and Google Scholar
- Research which is freely available for redistribution

Submit your manuscript at
www.biomedcentral.com/submit

