

Review

Emerging concepts of apolipoprotein D with possible implications for breast cancer

Håvard Sjøiland^{a,c}, Kjetil Søreide^b, Emiel A.M. Janssen^b, Hartwig Körner^{a,c}, Jan P.A. Baak^{b,d,e} and Jon Arne Søreide^{a,c,*}

^a Department of Surgery, Stavanger University Hospital, Stavanger, University of Bergen, Norway

^b Department of Pathology, Stavanger University Hospital, Stavanger, University of Bergen, Norway

^c Department of Surgical Sciences, University of Bergen, Norway

^d The Gade Institute, University of Bergen, Norway

^e Free University, Amsterdam, The Netherlands

Abstract. Apolipoprotein D (ApoD) is a small glycoprotein of 24 kD, and a member of the lipocalin family. ApoD exerts several intracellular mechanistic roles, especially ligand binding. Some putative ligands are arachidonic acid, progesterone, and tamoxifen. It probably has a binding/reservoir function of these ligands in the cytoplasm. Furthermore, ApoD has features compatible with endosomal trafficking, proteolytic activity and interactions in cellular signal pathways. ApoD inhibits translocation of phosphorylated MAPK into the nucleus. Moreover, ApoD is associated with reduced proliferative activity of cancer cells, and is abundantly raised in senescent cells. In breast cancer, ApoD expression is associated with favourable histology and clinical stage, whereas in adjacent tumour stroma ApoD expression is a marker of adverse prognosis. Oestrogen receptor expression in breast cancer is inversely related to ApoD expression. Therefore, a combined oestrogen receptor positivity/ApoD positivity, could reflect a non-functional oestrogen receptor pathway, and this subset of breast cancer patients does not react to adjuvant tamoxifen treatment. The triangular relationship between oestrogen receptor, tamoxifen and ApoD should be further explored.

Keywords: Apolipoprotein D, breast cancer, molecular, biology, prognosis, predictive factor, tamoxifen, review

1. Introduction

Apolipoprotein D (ApoD) a small glycoprotein of 24 kD, a member of the lipocaline family, is expressed in most body tissues and has important roles in normal human cell physiology. Pathophysiologically, it is associated with defects in lipid metabolism and cancer cell progression. ApoD was first detected in 1963 in human plasma [2]. Ten years later a progesterone-binding component in cyst fluid from women with gross cystic disease of the breast (i.e. fibrocystic disease of the breast) was identified that differed from the sex-hormone binding properties of serum [72]. In 1977, Haagensen et al. [31,32] char-

acterized and named this protein gross cystic disease fluid protein-24 (GCDFP-24). Eventually, others named it progesterone-binding cyst protein (PBCP) [49,92]. In 1990, Balbin et al. [4] examined the molecular structure of GCDFP-24 (i.e. PBCP) and found it to be identical to ApoD.

Despite its interesting biochemistry and putative functions, ApoD is relatively unknown. Two explanations are obvious: First, various articles on ApoD are spread over widely different journals. Secondly, its location and function is confusing: ApoD can be located in the cytoplasm [82,100,110], near the outer cell membrane [100], and in the perinuclear membrane area [81,100] (Fig. 1). Due to these different cellular locations, its function is more complex to understand than that of proteins with a subcellular localization mainly in the nucleus [59] (e.g. oestrogen receptor (ER), Ki 67). This difficulty may have contributed to the relative paucity of ApoD studies.

* Corresponding author: Jon Arne Søreide, MD, PhD, FACS, Department of Surgery, Stavanger University Hospital, N-4068 Stavanger, Norway. Tel.: +47 51 51 83 30 (secretary); Fax: +47 51 51 99 19; E-mail: jon.soreide@kir.uib.no.

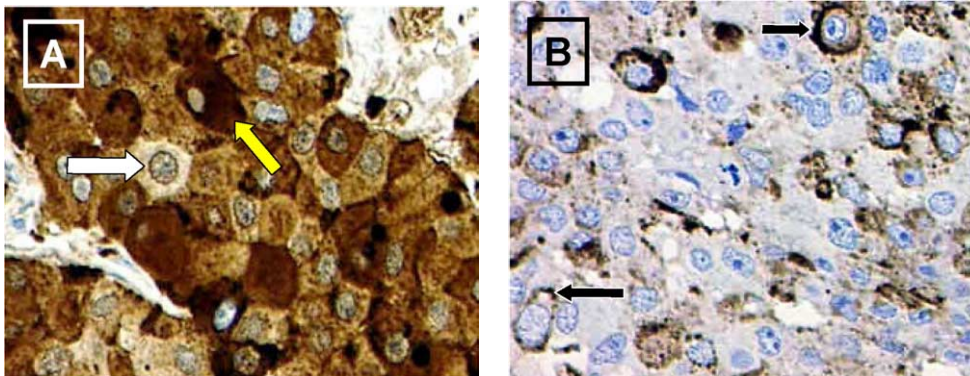


Fig. 1. Immunohistochemical determination of ApoD in breast cancer tissue. (A) Strong cytoplasmic (yellow arrow) and perinuclear membrane area (white arrow) staining. (B) Staining of outer cell membrane (black arrows).

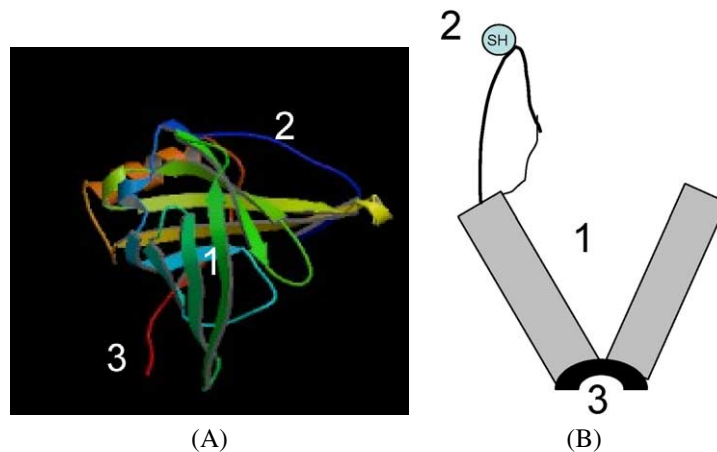


Fig. 2. (A) Ribbon model [66] of the ApoD molecule with the three main structure/functional features (1, 2, and 3 in the figure): 1 – The bands in green (4 bands), blue (2 bands), and yellow (2 bands) form the anti-parallel β -barrel structure of the ligand-binding cup where hydrophobic molecules are bound. 2 – Ω -loop containing cysteine-rich residues with one free hydrogen-sulphur group (SH) that may bind to other molecules with cysteine residues and form dimers and trimers and complexes with other molecules. 3 – N-terminal 3_{10} - α -helix found in proteins associated with endosomal trafficking serving as a docking device on intracellular membranes. (B) Cartoon model of ApoD with the same three main features as shown in (A).

In this paper, we would like to focus on ApoD and its interactions by addressing contemporary molecular aspects of possible relevance for its biological understanding. In particular, we want to deal with the relevance of ApoD in breast cancer development and management.

2. Mechanistic aspects of Apolipoprotein D (ApoD)

The human *Apolipoprotein D* (ApoD) gene is located on chromosome 3q26.2-qter and contains 5 exons [20,65]. The promoter region, located 10 kbp upstream from exon 1 [42], has response elements for

oestrogen, glucocorticoids, progesterone, vitamins A and D and many other molecules [19]. The *ApoD*-gene product is a small glycoprotein of 24 kD, consisting of 169 amino-acids (Fig. 2). Based on homology regions, ApoD is classified in the lipocalin family, is found in plasma, and is also expressed intra-cellularly. Despite sharing homology with other lipocalins with a known membrane receptor (megacalin receptor), no receptor for ApoD has been classified as yet [23]. Unlike other apolipoproteins, which are primarily expressed in the intestine and liver, ApoD is more abundant in many other tissues, including adrenal glands, breast, endometrium, placenta, brain, and connective tissue [8,20,66,90].

The widespread location of ApoD suggests an important functional role in human cell physiology. In spite of its small size, the 3-dimensional structure has three main features [25,66] (Fig. 2):

1. The 8 *anti-parallel* β -barrel structure of the ligand-binding cup where hydrophobic molecules are bound;
2. An Ω -loop containing cysteine-rich residues with one free hydrogen–sulphur group (SH) that may bind to other molecules with cysteine residues and form dimers and trimers and complexes with other molecules;
3. An *N-terminal* 3_{10} - α -helix found in proteins associated with endosomal trafficking [69] serving as a docking device on intracellular membranes. (For more biochemical details of ApoD reference is made to [25,75].)

ApoD takes part in complex interactions with a number of target molecules playing a central role in important pathways in the regulation of cell function; it has features compatible with transport proteins of hydrophobic ligands [25,69], epitopes with receptor binding properties [23], formation of homologous and heterologous oligomers, and proteolytic activity [47]. *In vitro* studies have shown ApoD to be a tissue-specific multi-functional hydrophobic ligand carrier/interacter with a strong binding affinity to arachidonic acid [61], pregnenolone, progesterone [48] and bilirubin [27]. Moreover, tamoxifen has about 40% of the affinity of

progesterone to ApoD, while oestrogen have a very low affinity to ApoD [48]. After binding the ligand, ApoD can make a dimer/oligomere and the binding process is very fast [71]. This indicates that small changes in its target molecules (ligands) can be corrected or controlled very quickly by ApoD (e.g. recycling of free arachidonic acid back to cell membrane).

3. Regulation of ApoD

Based on pertinent literature [6,7,16,19,33,35,53–55,85–87,96], the transcriptional up- and down-regulation of ApoD expression mechanisms are briefly summarized in Fig. 3. Since there are three oestrogen receptor responsive elements in the promoter region, the transcription of ApoD is very sensitive for a functional ER–oestradiol complex. At the epigenetic level, hypermethylation of CpG islands in the promoter region is an effective way to down-regulate transcription of a gene [19]. In non-endocrine malignant tumours, including colon cancer [64], hepatocellular carcinoma [101], and oesophageal cancer [108], heavy methylation in the promoter region of the ApoD gene has been shown, and subsequently the expression of ApoD was found to be down-regulated.

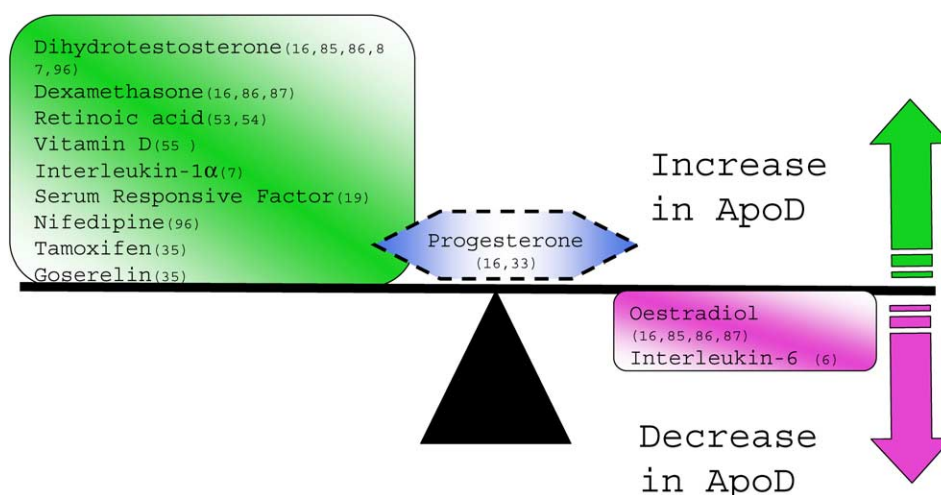


Fig. 3. Regulation of ApoD transcription. Factors on the left side (indicated in green) increase transcription. Factors on the right side (indicated in purple) decrease transcription. In the middle (in blue) is progesterone, which may both increase and decrease ApoD expression and sometimes has no influence at all on transcription. Figures in brackets correspond to the reference list. Of note are the well-documented stimulating effect of androgens and glucocorticoids and the inhibiting effect of oestradiol. The mechanism of tamoxifen and goserelin in increasing ApoD transcription is through inhibition of oestradiol. (Oestradiol has an inhibitory effect on the transcription.)

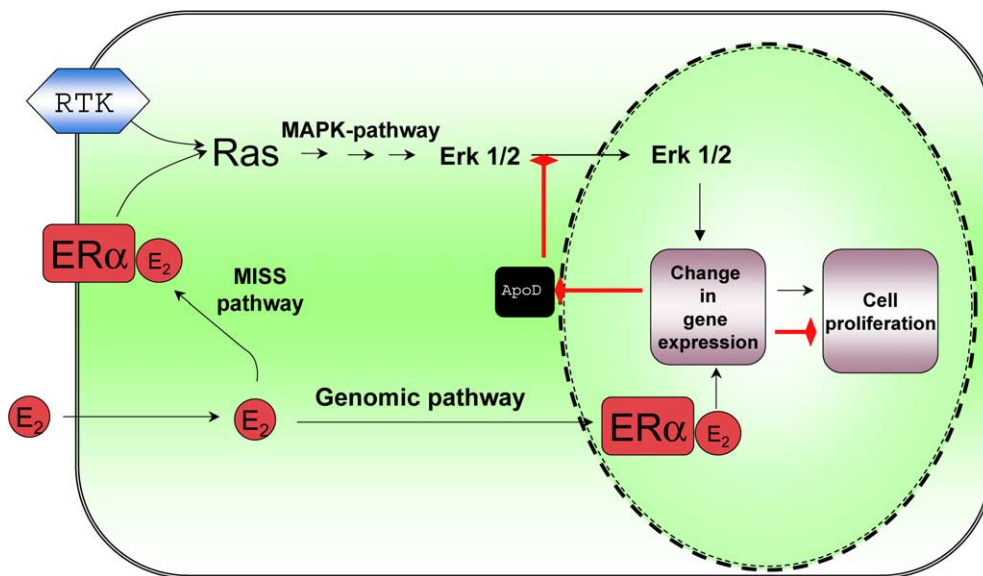


Fig. 4. ApoD and interaction in the MAPK and genomic-ER α and MISS-ER α pathways. In the MAPK pathway, ApoD is shown to inhibit (red arrow with bar) the translocation of Erk 1/2 (= MAPK) from the cytoplasm into the nucleus. Hence, transcription of factors that increase proliferation is inhibited. ER α stimulates proliferation (black arrow), but inhibits (red arrow with bar) ApoD transcription. This inhibition of ApoD is “a gate opener” for the MISS-ER α pathway which acts through the Ras/MAPK pathway; consequently cell proliferation is enhanced. Abbreviations: ApoD: apolipoprotein D; ER α : oestrogen receptor α ; E $_2$: oestradiol; Erk 1/2: extracellular regulating kinase; MAPK: mitogen activated protein kinase; MISS: membrane initiated steroid signalling; Ras: rat sarcoma virus oncogene; RTK: receptor tyrosine kinase.

4. ApoD interacts with the mitogen-activated protein kinase (MAPK) signalling pathway

In the mitogen-activated protein kinase (MAPK) signalling pathway, translocation of the phosphorylated activated form of Erk1/2=MAPK from the cytosol into the nucleus is required for cell cycle entry (Fig. 4) [11]. ApoD inhibits this translocation in ovine vascular smooth muscle cells [81], blocking cells from entering G $_1$ and thus inhibiting proliferation. Whether this inhibition results from suppression of the nuclear export proteins, activation of Rac or protein kinase A, or from blocking the binding of phosphorylated MAPK to the docking molecule inactive mitogen kinase phosphatase is still under investigation [81]. Interestingly, hyper-expression of MAPK mRNA has been observed in human breast cancer, including epithelial cells in the invasive front [89]. This finding is in agreement with the frequent observation that increased mitotic activity in the periphery of breast cancers is prognostically a strong sign [3]. Moreover, low activity of MAPK [63] and low proliferation activity [3] have been found to correlate with better relapse-free and overall survival in breast cancer. ApoD expression in cellular senescence could be explained by its ability to “turn off” the mitotic drive through inhibition of the

important MAPK pathway, maintaining the quiescent state.

5. ApoD interacts with arachidonic acid and prostaglandin synthesis

ApoD has a high binding affinity for arachidonic acid [61]. Arachidonic acid is the substrate for the important prostaglandin-producing cyclo-oxygenase-2 (COX-2) and 5-lipoxygenase (5-LO) enzymatic pathways, which have prostaglandins and leucotriens as the end products. These end products stimulate cell proliferation, inhibit apoptosis, facilitate neo-angiogenesis (Fig. 5) and therefore are of the utmost importance for malignant transformation [58,78,97]. In short, (too much) free arachidonic acid is toxic for normal cells [15,73]. ApoD sequesters free arachidonic acid in the cytoplasm [100] and may stabilize membrane-bound arachidonic acid [99]. Hence, ApoD may be part of the Lands cycle where arachidonic acid is cycling between a free and an esterified form [44,73]. Both effects are thought to be of importance for the enzymatic conversion of arachidonic acid in the cell. ApoD therefore could play a role in regulating the amount of cyto-active factors in the COX-2 and 5-LO path-

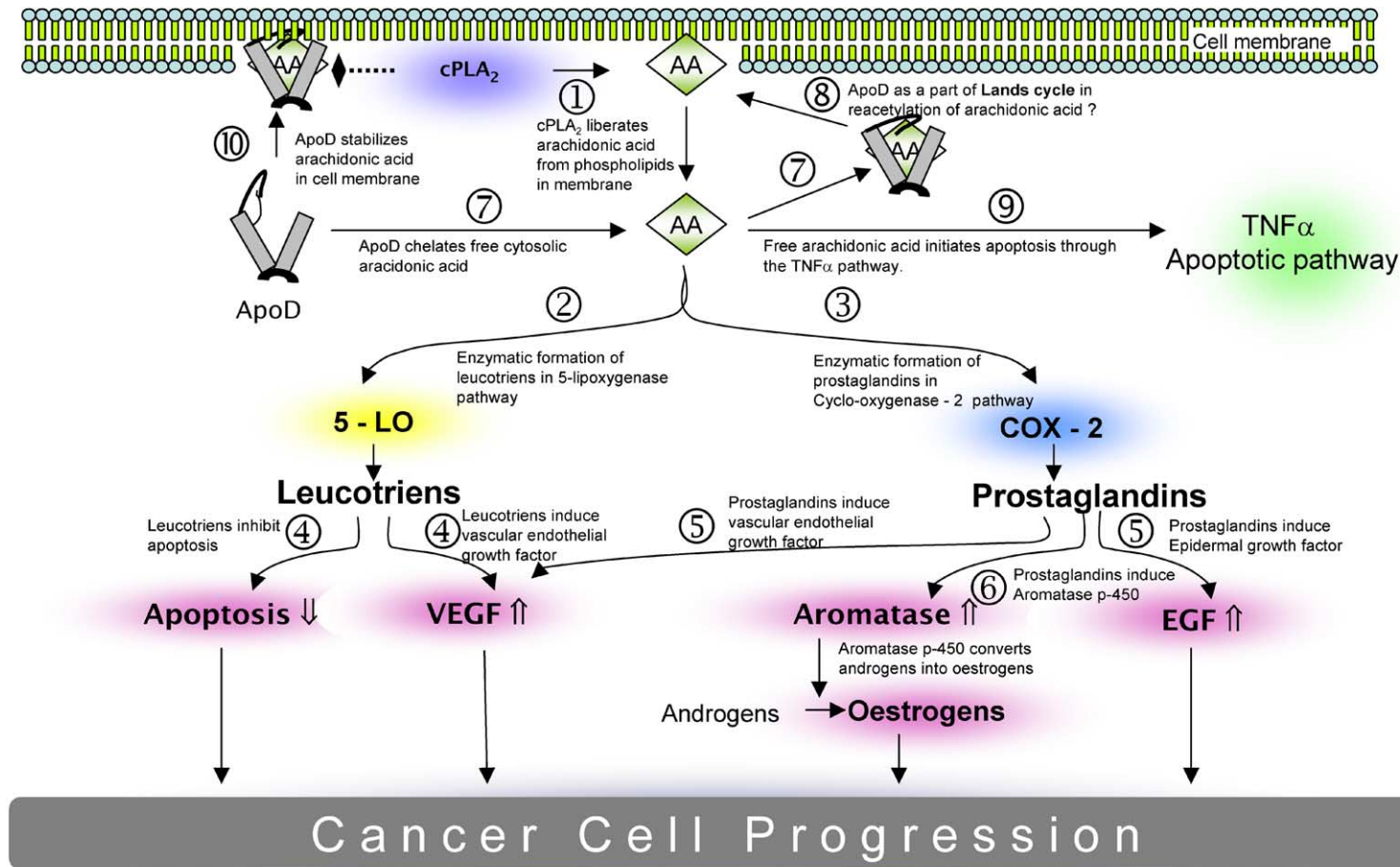


Fig. 5. Importance of ApoD in arachidonic acid (AA) signaling pathways. Adapted from references [73,99] and [100]. The main message in the figure is that ApoD could be a factor that has a strong influence on the availability of free arachidonic acid in the cell. The numbers indicate the sequence of different reactions/interactions. Abbreviations: 5-LO: 5-lipoxygenase; AA: arachidonic acid; cPLA₂: cytoplasmic phospholipase A₂; COX-2: cyclo-oxygenase 2; ER: oestrogen receptor; EGF: epidermal growth factor; TNF α : tumour necrosis factor alpha; VEGF: vascular endothelial growth factor. 1. cPLA₂ cleaves the binding between glycerol and AA and liberates AA into the cytoplasm. 2. AA is the 5-LO enzyme substrate. 3. AA is the COX-2 enzyme substrate. 4. Leucotriens increase VEGF pathway in neoangiogenesis and inhibit apoptosis. 5. Prostaglandins crosstalk with the EGF pathway and neoangiogenesis via the VEGF pathway. 6. Prostaglandins stimulate transcription of aromatase and crosstalk with the ER pathway. 7. Apo D binds/chelates free AA in the cytosol and removes it from the free functional substrate pool of the enzymatic pathways described in 2 and 3. 8. ApoD may be part of the Lands' cycle, where free AA is esterified back in the phospholipids bilayer membrane in order to keep a low level of free arachidonic acid in the cytoplasm. 9. Increased free arachidonic acid is toxic for the cell and initiates apoptosis through the TNF- α pathway. 10. ApoD protects liberating of AA in the plasma membrane against the enzymatic cleavage function of cPLA₂.

ways. COX-2 activity in cancer correlates with enhanced invasiveness and cell motility [88]. It is therefore understandable that in ER-negative breast cancer, COX-2 correlates with poorer disease-free and disease-related survival [105]. Cross-talk between the COX-2 pathway and other pathways is thought to be important, including involvement of vascular endothelial growth factor receptor [80], the epidermal growth factor receptor pathways [30], and the aromatase/ER pathways [10]. Hypothetically this gives ApoD an important role in the control of cancer cell progression. Intriguingly, free arachidonic acid is pro-apoptotic, and ApoD will tend to facilitate its re-acetylation in tumour cells that have become dependent on prostaglandin signalling pathways. ApoD thus could reduce the apoptotic “drive” from arachidonic acid. In cell senescence, ApoD might contribute to avoid apoptosis by chelating all free arachidonic acid.

6. ApoD and relationship with sex steroid hormone receptors

The sex steroid receptors oestrogen receptor (ER), progesterone receptor (PR) and androgen receptor (AR) belong to the nuclear receptor superfamily and each exists in two isoforms, ER α /ER β , PRA/PRB and ARA/ARB respectively. Their effects are mediated through both a slow nuclear/genomic [67] and a fast non-genomic/membrane-initiated steroid signalling (MISS) pathway [56].

6.1. Androgens, and androgen receptor (AR)

Androgens act through both membrane-bound [36] and intracellular AR localized in the cytoplasm and nucleus [22]. ApoD transcription is highly up-regulated in cancer cell lines when androgens are introduced [85,87,96]. However, in contrast to the cell culture studies, no association was found between AR and ApoD in breast cancer when analyzed by immunohistochemistry on serial sections [34]. The strong up-regulation of ApoD by androgens must therefore be modified by other factors, meaning that the micro-environmental difference between cell cultures and solid tumours (the absence or presence of stromal cells) becomes of interest for the study of ApoD and AR interaction. Stromal cells produce aromatase which converts androgens into oestrogens [98]. These have a strong inhibiting effect on ApoD transcription. This finding could explain the discrepancy between ep-

ithelial cancer cell cultures and solid tumours regarding AR and ApoD. In evaluating data from the literature about the interaction of ApoD with steroid and steroid receptors, it is essential to consider the study model used.

Thus, ApoD is upregulated by androgens and down-regulated by oestrogens. ApoD can be a marker of the balance between AR, aromatase and ER.

6.2. Progesterone receptor (PR) and oestrogen receptor (ER) pathways

ApoD has a strong affinity for progesterone [48], which indicates an important role for ApoD in the PR pathway very likely (Fig. 6). The destiny of progesterone within an ApoD positive cell is uncertain, but may have two effects on the PR pathways. The first effect of ApoD might be to reduce the biological availability of progesterone to the genomic PR pathway by binding progesterone and diverting it to metabolic inactivation. Because the progesterone-PR complex in the nucleus has a short half-time [95] and ApoD is mainly located in the cytoplasm [110], the overall result may be reduction of the effect of progesterone. The second effect on the progesterone pathway is that ApoD may serve as a cytoplasmic reservoir for progesterone, creating a “slow release” and prolonged genomic progesterone effect. Moreover, a cytoplasmic reservoir might switch progesterone from the genomic pathway to the non-genomic MISS pathway (Fig. 6). The effect of either of these proposed pathways would depend on the relative content of the two isoforms, PRA and PRB [14], which have opposite functions. While PRA inhibits transcription, PRB activates transcriptional function on progesterone response elements in target genes [103] (Fig. 6). Because of these opposite effects, the net effect of progesterone depends on the PRA : PRB ratio in the cell [60]. Thus, if progesterone enters an ApoD-negative cell, it can reach the nucleus, bind to PR, and exert its effects without any interaction. In contrast, in cytoplasmic ApoD positive cells, progesterone could be chelated, stored or metabolized.

In the genomic pathway, binding of oestradiol to ER- α increases proliferation, while binding to ER- β decreases proliferation [67]. In breast cancer, nuclear ER- α is often over-expressed and functions as an oncogene [107]. Hence, competitive blocking of the slow nuclear ER pathway with tamoxifen is a well-known targeted therapy in breast cancer and so, the ER- α MISS pathway [51,56] could explain tamox-

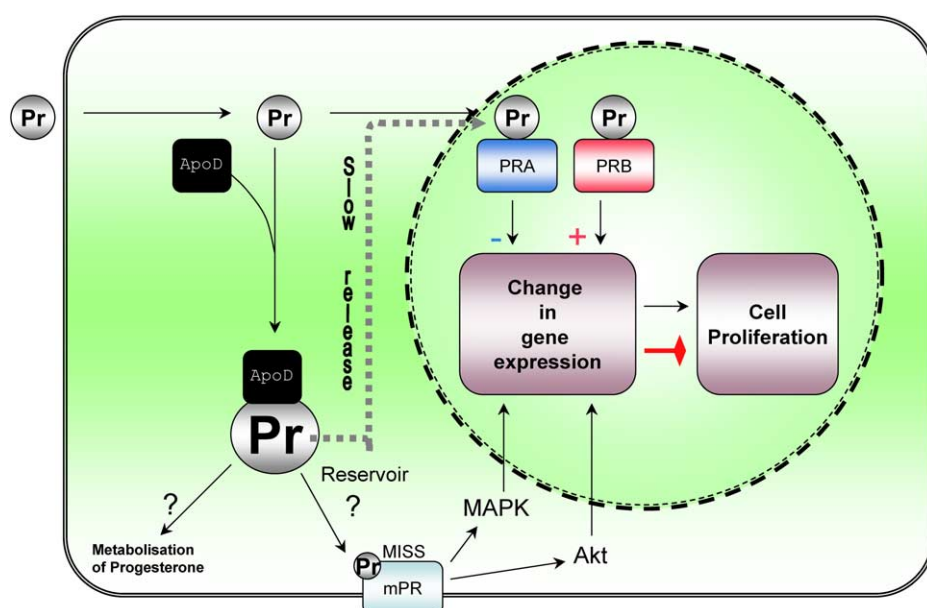


Fig. 6. Two models showing how ApoD may interact with progesterone. 1. In the cytoplasm ApoD may bind progesterone and divert it to metabolic degradation. This will reduce the effect of progesterone in both the genomic and MISS pathway. 2. ApoD binds free progesterone and hides it away from metabolism. This will create an intracellular reservoir of progesterone and a “slow release” effect (****→) on the genomic pathway may occur. Also, this may enhance (→) the MISS progesterone pathway. See text for further discussion. Abbreviations: ApoD: Apolipoprotein D; MAPK: mitogen activated protein kinase; mPR: membrane progesterone receptor; Pr: progesterone; PRA: progesterone receptor A; PRB: progesterone receptor B.

ifen resistance by downstream phosphorylation of target proteins in the MAPK and Akt pathways and increase proliferation in breast cancer [68,91]. Down-regulation of ApoD via the genomic ER- α pathway is potent and sensitive [19] (Fig. 3). Combined with the ability of ApoD to inhibit MAPK translocation into the nucleus, the genomic inhibition of ApoD may enhance the effect through the ER- α MISS pathway (Fig. 4). Furthermore, since ApoD has three oestrogen response elements in its promoter region exerting a strong inhibitory effect on gene transcription, co-expression with ER could be a sensitive marker for a non-functional genomic ER- α pathway.

7. ApoD: A marker of cellular senescence and homeostasis

Recent studies indicate that ApoD is involved in both the cell senescence program and homeostasis [9,24,106]. Increased ApoD expression is associated with a marked reduction in cell proliferation [7,53,55, 85–87,96]. Cellular senescence induced by starvation in human oral keratinocytes [40] and fibroblasts [74] leads to a striking increase in ApoD expression and

indicates participation in the cell senescence program [5]. Thus, ApoD may be a marker for cell senescence. Generally, a senescent G₀ tumour cell apparently benefits cancer patients [12]. Interestingly, however, cell senescence of the adjacent tumour stroma is prognostically disadvantageous [13]. The following molecular cell biological facts may explain this apparent discrepancy. Non-senescent stroma secretes tissue inhibitors of metalloproteinases and serpins, which hampers cancer cell invasion [1]. On the other hand, senescent stroma secretes high levels of specific matrix metalloproteinases (MMPs) [40], epithelial growth factor [40], and inflammatory cytokines, which promotes cancer cell invasion and metastases [13,70]. When ApoD overexpression occurs in the stromal cells, senescence favours the epithelial invasive cancer cells, thereby worsening the prognosis of cancer patients. Also, the proteolytic properties of ApoD itself may add to the collagen dissolution by the matrix metalloproteinases. Alternatively, ApoD might form complexes with matrix metalloproteinases and enhance their effects. It is therefore clear that the functional significance of ApoD expression in epithelial cancer cells or in the adjacent stroma has two widely different effects. This dichotomy supports the expression, “ApoD

is a good citizen but a bad neighbour" (rephrased from [13]). This difference also holds in the pancreas, where juxta-tumoural expression of ApoD is an important response marker for tumour invasion into the adjacent stroma [38] regardless of tumour type [76]. Moreover, in prostatic bone metastasis, ApoD is up-regulated at the tumour–bone interface together with MMP-7 [57].

Interestingly, Leung et al. [50] found an increase in both human and rat aortic smooth muscle motility when ApoD transcription was induced. Conversely, the motility was reduced when ApoD transcription was inhibited which was linked to increased Rac-1 activation. ApoD can be expressed in or taken up from the micro-environmental neighbouring cells into smooth muscle cells and can modulate their motility in response to growth factors [50]. If the same happens in cancer cells, this could imply that ApoD expression in the surrounding stroma is a poor prognostic sign because it results in the sustaining of cancer cell motility and invasion.

ApoD interacts with leptins. This means that a network of crosstalking, signalling pathways are activated and leptins are considered to play an important role in the relationship between nutrition, obesity, cardiovascular disease and cancer [17,26,37,39,46,79,102]. This has been described in detail elsewhere [37,52] and can indicate that ApoD is involved in the micro-environmental effects of fat tissue adjacent to the breast cancer cells.

8. Observations in breast cancer

In the breast, ApoD expression may play a role in local steroid production and intracellular storage of the ligand molecules (i.e. progesterone and arachidonic acid). In fluids from fibrocystic breast disease, ApoD is found in up to 800–1000 times the amount found in plasma [49], and over 50% of invasive breast cancers are ApoD positive [18,49,93]. ApoD has often been measured biochemically in the tumour cytosol [84,93], which is a mixture of stromal and tumour cells where tumour/stroma differentiation cannot be made. Studies that have localized and quantified ApoD separately in the epithelial and stromal parts of the tumour found that ApoD was prognostic [18,43,104], whereas another study using the cytosol method did not [93]. This distinction indicates that ApoD determination in cytosol is a less reliable prognosticator than immunohistochemically determined ApoD [18].

By cytosol determined ApoD, a higher ApoD content is observed in adjacent normal tissue than in the primary tumour in the same breast [94]. ApoD content is highest in benign tumours [49] whereas it is lower in invasive cancer and further decreases with higher stages and metastatic cancer. Moreover, the proportion of patients with ApoD-negative tumours was higher in patients with at least four positive axillary lymph nodes when compared to those with fewer than four involved nodes [43,49,92,93]. Well-differentiated breast cancers show the highest levels of ApoD and lower levels are found high grade cancers [18,82–84]. ApoD is expressed more frequently in invasive lobular than in invasive ductal, carcinomas [82] and more often in postmenopausal and elderly than in premenopausal or younger patients [18]. The explanation for this is probably the postmenopausal decline in circulating oestradiol. As a result, the suppression of ApoD transcription by oestradiol is decreased and hence ApoD protein increased.

ApoD expression in primary epithelial breast cancer cells has been claimed to be associated with a *favourable prognosis*. When ApoD is overexpressed in the *pre-existent stromal cells*, senescence favours the epithelial invasive cancer cells by secreting high levels of MMPs, epidermal growth factor and inflammatory cytokines. ApoD expression in the adjacent tumour stroma is, thus, a *poor prognostic marker* in breast cancer [104]. The location of ApoD within, versus around the tumour therefore should be taken into consideration when evaluating results from studies on ApoD.

Progesterone receptor as usually determined in breast cancer is a mixture of PRA and PRB, which have opposite effects. Consequently, PR determination without distinguishing PRA and PRB is not very specific and as a result, the prognostic significance of interactions between ApoD, PR and progesterone in breast cancer has not yet been studied in a satisfactory manner. In normal breast tissue, PRA and PRB are equally expressed [28,62]. However, in breast cancer, the normal co-expression of PRA and PRB is lost, and the ratio is increasingly skewed [29,62] toward PRA as the cancers become more malignant [60] (less cohesion, decreased contact inhibition, increased cell motility, and metastatic potential). As a result, an increased PRA : PRB ratio is associated with a poor prognosis. This shift in signalling is prominent in steroid-independent breast cancer cells and is also observed in tumours that are dependent on growth factor signalling [45,77].

The relationship between ER, tamoxifen and ApoD is perhaps one of the most promising aspects of ApoD

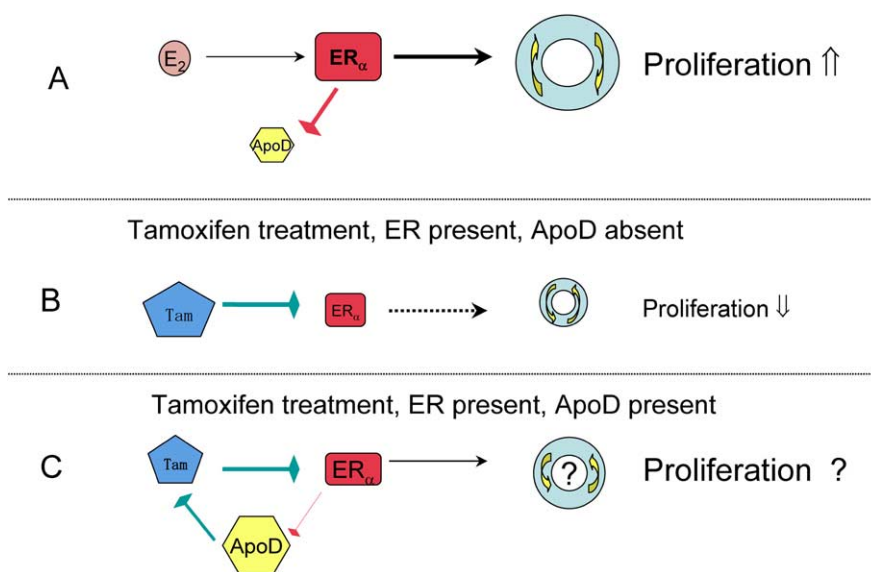


Fig. 7. The triangular relationship between tamoxifen, ER and ApoD. (A) ER has a stimulatory effect (\rightarrow) on the cell proliferation, and an inhibitory effect (\rightarrow) on ApoD transcription. (B) Administration of tamoxifen will inhibit (\rightarrow) ER action and reduce proliferation. (C) In ApoD positive cells, the ER is either not functional and will not exert its potent inhibitory effect on ApoD transcription or tamoxifen will increase ApoD transcription by reducing the inhibitory ER effect (\rightarrow). ApoD may in turn bind and chelate tamoxifen (\rightarrow). In either case, tamoxifen will probably not have the same antiproliferative effect compared with a ApoD negative cell. Abbreviations: ApoD: Apolipoprotein D; Tam: tamoxifen; E₂: oestradiol; ER: oestrogen receptor.

in breast cancer. Although one early report [84] indicated a positive correlation between ApoD and ER activity, an inverse relationship between the two has been reported in later studies [41,49,92] as expected from cellular studies discussed above. Moreover, ApoD is a predictor of adjuvant tamoxifen treatment in node-positive breast cancer patients with oestrogen receptor (ER)-positive tumours. Interestingly, only patients with ApoD-negative tumours had improved relapse-free survival when adjuvant tamoxifen treatment was given for 2 years; in the same group of patients with ApoD-positive tumours, the outcome was not influenced by adjuvant tamoxifen treatment [93].

The triangular relationship between ER, tamoxifen and ApoD opens up an interesting explanation for this observation. Firstly, since ApoD expression may indicate a non-functional ER-pathway, tamoxifen will not be effective in the subset of ER-positive/ApoD-positive cancers [93]. Secondly, ER suppresses ApoD transcription, and when tamoxifen is administered, this suppression is lost and ApoD transcription increases (Fig. 7). The binding affinity ApoD has to tamoxifen (40% of progesterone) may then sequester tamoxifen and mitigate its biological effects. Hence, a tamoxifen/ER/ApoD equilibrium could exist.

Conclusively, according to the above considerations, ER α positive /ApoD positive tumours should not re-

ceive tamoxifen, but rather aromatase inhibitors. This will reduce the local oestradiol production, reduce ER stimulation (both nuclear and MISS pathway) and thereby reduce proliferation. Of course, this hypothesis must be verified in appropriate studies.

9. Conclusions

Apolipoprotein D interacts with many important pathways, e.g., MAPK, leptin, Arachidonic Acid and Progesterone. ApoD has several likely mechanistic functions (Fig. 8):

1. Building up an intracellular reservoir of an unstable ligand;
2. To chelate (bind and divert) the ligand either into an alternative pathway or to its metabolism locations;
3. Making interactions with transmembrane receptors;
4. Participate in recycling of membrane bound molecules/ligands;
5. Endosomal trafficking;
6. Making complexes with other molecules either extracellularly or intracellularly.

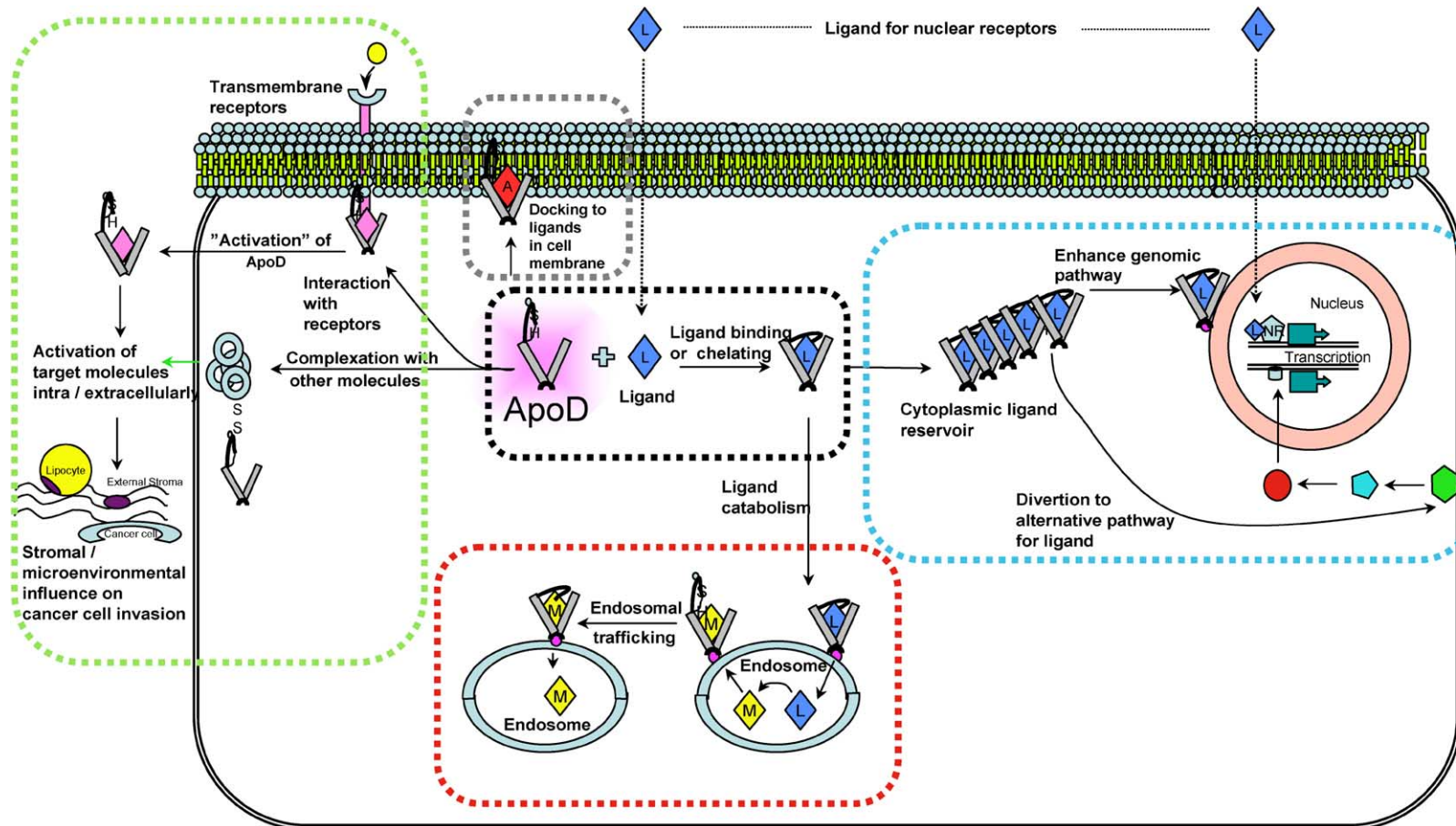


Fig. 8. General mechanistic model of cellular actions of ApoD. ApoD may be produced locally in a cell, secreted to or taken up from juxta cellular micro-environment. Black dotted rectangle: In the cell, generally ApoD may bind hydrophobic ligands. Blue dotted rectangle: The ligand bound to ApoD may be built up as an intracellular reservoir that can increase the effect on gene transcription of nuclear receptor ligands. Alternatively this cytoplasmic reservoir may divert the ligand to alternative pathways. Red dotted rectangle: ApoD is able to exert endosomal trafficking, and may take part in chelating and diverting ligands to its metabolic pathways. This may also include drugs administered. Grey dotted rectangle: ApoD is also able to dock to cellular membrane molecules and may stabilize these molecules and hence be a regulator of the turnover of such molecules. Green dotted rectangle: Moreover, possible interactions with transmembrane receptors are suggested to take place and ApoD may form complexes with other molecules either inside or outside the cell that are involved in the micro-environment of the cancer cell. Abbreviations: L in blue diamond: ligand for nuclear receptors; M in yellow diamond: metabolite of ligand (L); A in red diamond: intramembranous ligand.

These functions may be tissue specific, but within a certain tissue, ApoD may also have different roles in both the normal/physiological state and pathological state [109]. Thus, it seems evident that ApoD plays a central role in humans both in normal- and in pathophysiological pathways, including disturbances in fat metabolism and cancer progression. Up-regulation of ApoD in tumour cells and adjacent stroma has opposite effects. Consequently, *in situ* determination of ApoD by immunohistochemistry should be the preferred method of analysis. Previously employed methods based on cytosol quantification are most likely inaccurate and provide less biological information of interest. In breast cancer, ApoD may evolve as an interesting prognostic and predictive factor in decision making for tailored adjuvant (endocrine) therapy. Special attention should be paid to the triangular relationship of tamoxifen/ER/ApoD.

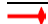

Acknowledgements

The authors appreciate suggestions and comments made by Professor Stener Kvinnsland, MD, PhD and Professor Jan Erik Varhaug, MD, PhD on a previous version of this manuscript.

Grant: Dr. Håvard Søyland, MD is a research fellow financially sponsored by the Western Norwegian Health Authorities [project # 911166].

References

- [1] B. Alberts, A. Johnson, J. Lewis, M. Raff, K. Roberts and P. Walter, Cell junctions, cell adhesions, and the extracellular matrix, in: *The Molecular Biology of the Cell*, 4th edn, Garland Science, 2002, pp. 1111–1112.
- [2] M. Ayrault Jarrier, G. Levy and J. Polonovski, Study of Human serum alpha-lipoproteins by immunoelectrophoresis, *Bull. Soc. Chim. Biol. (Paris)* **45** (1963), 703–713.
- [3] J.P. Baak, P.J. van Diest, F.J. Voorhorst, E. van der Wall, L.V. Beex, J.B. Vermorken and E.A. Janssen, Prospective multicenter validation of the independent prognostic value of the mitotic activity index in lymph node-negative breast cancer patients younger than 55 years, *J. Clin. Oncol.* **23** (2005), 5993–6001.
- [4] M. Balbin, J.M. Freije, A. Fueyo, L.M. Sanchez and C. Lopez-Otin, Apolipoprotein D is the major protein component in cyst fluid from women with human breast gross cystic disease, *Biochem. J.* **271** (1990), 803–807.
- [5] I. Ben-Porath and R.A. Weinberg, The signals and pathways activating cellular senescence, *Int. J. Biochem. Cell. Biol.* **37** (2005), 961–976.
- [6] Y. Blais, K. Sugimoto, M.C. Carriere, D.E. Haagensen, F. Labrie and J. Simard, Interleukin-6 inhibits the potent stimulatory action of androgens, glucocorticoids and interleukin-1 alpha on apolipoprotein D and GCDPF-15 expression in human breast cancer cells, *Int. J. Cancer* **62** (1995), 732–737.
- [7] Y. Blais, K. Sugimoto, M.C. Carriere, D.E. Haagensen, F. Labrie and J. Simard, Potent stimulatory effect of interleukin-1 alpha on apolipoprotein D and gross cystic disease fluid protein-15 expression in human breast-cancer cells, *Int. J. Cancer* **59** (1994), 400–407.
- [8] J.K. Boyles, L.M. Notterpek, M.R. Wardell and S.C. Rall Jr., Identification, characterisation and tissue distribution of apolipoprotein D in rat, *J. Lipid. Res.* **31** (1990), 2243–2256.
- [9] T. Bratt, Lipocalins and cancer, *Biochim. Biophys. Acta* **1482** (2000), 318–326.
- [10] A.M. Brodie, Q. Lu, B.J. Long, A. Fulton, T. Chen, N. Macpherson, P.C. DeJong, M.A. Blankenstein, J.W. Nortier and P.H. Sleen, Aromatase and COX-2 expression in human breast cancers, *J. Steroid. Biochem. Mol. Biol.* **79** (2001), 41–47.

Abbreviation	Explanation
	inhibitory effect
	stimulatory effect
5-LOX	5-lipoxygenase
AA	arachidonic acid
ApoD	apolipoprotein D
ARA	Androgen receptor A
ARB	Androgen receptor B
COX 2	cyclo-oxygenase 2
cPLA ₂	cytoplasmic phospholipase A ₂
E ₂	oestradiol
EGF	epidermal growth factor
ER	oestrogen receptor
ER- α	oestrogen receptor α
ER- β	oestrogen receptor β
GCDPF-24	gross cystic disease fluid protein-24
MAPK	mitogen-activated protein kinase
MISS	membrane-initiated steroid signalling
MMP	Matrix metalloproteinase
mPR	membrane bound progesterone receptor
NR	nuclear receptor
PBC	progesterone binding component
PBCP	progesterone binding cyst protein
PBP	progesterone binding protein
Pr	progesterone
PR	progesterone receptor
PRA	progesterone receptor A
PRB	progesterone receptor D
RTK	receptor tyrosine kinase
TAM	tamoxifen
TNF- α	tumor necrosis factor α
VEGF	vascular endothelial growth factor

- [11] A. Brunet, D. Roux, P. Lenormand, S. Dowd, S. Keyse and J. Pouyssegur, Nuclear translocation of p42/p44 mitogen-activated protein kinase is required for growth factor-induced gene expression and cell cycle entry, *EMBO J.* **18** (1999), 664–674.
- [12] J. Campisi, Suppressing cancer: the importance of being senescent, *Science* **309** (2005), 886–887.
- [13] J. Campisi, Senescent cells, tumor suppression, and organismal aging: good citizens, bad neighbors, *Cell* **120** (2005), 513–522.
- [14] D. Chalbos and F. Galtier, Differential effect of forms A and B of human progesterone receptor on estradiol-dependent transcription, *J. Biol. Chem.* **269** (1994), 23007–23012.
- [15] H.M. Costa-Junior, F.C. Hamaty, R. da Silva Farias, M. Einicker-Lamas, M.H. da Silva and P.M. Persechini, Apoptosis-inducing factor of a cytotoxic T cell line: involvement of a secretory phospholipase A(2), *Cell Tissue Res.* **324** (2006), 255–266.
- [16] Y. de Launoit, R. Veilleux, M. Dufour, J. Simard and F. Labrie, Characteristics of the biphasic action of androgens and of the potent antiproliferative effects of the new pure antiestrogen EM-139 on cell cycle kinetic parameters in LNCaP human prostatic cancer cells, *Cancer Res.* **51** (1991), 5165–5170.
- [17] P.P. Desai, C.H. Bunker, F.A. Ukoli and M.I. Kamboh, Genetic variation in the apolipoprotein D gene among African blacks and its significance in lipid metabolism, *Atherosclerosis* **163** (2002), 329–338.
- [18] I. Diez-Itza, F. Vizoso, A.M. Merino, L.M. Sanchez, J. Tolviva, J. Fernandez, A. Ruibal and C. Lopez-Oti, Expression and prognostic significance of apolipoprotein D in breast cancer, *Am. J. Pathol.* **144** (1994), 310–320.
- [19] S. Do Carmo, D. Seguin, R. Milne and E. Rassart, Modulation of apolipoprotein D and apolipoprotein E mRNA expression by growth arrest and identification of key elements in the promoter, *J. Biol. Chem.* **277** (2002), 5514–5523.
- [20] D. Drayna, C. Fielding, J. McLean, B. Baer, G. Castro, E. Chen, L. Comstock, L. Henzel, W. Kohr and L. Rhee, Cloning and expression of human apolipoprotein D cDNA, *J. Biol. Chem.* **261** (1986), 16535–16539.
- [21] D.T. Drayna, J.W. McLean, K.L. Wion, J.M. Trent, H.A. Drabkin and R.M. Lawn, Human apolipoprotein D gene: gene sequence, chromosome localization, and homology to the alpha 2u-globulin superfamily, *DNA* **6** (1987), 199–204.
- [22] R.M. Evans, The nuclear receptor superfamily: a rosetta stone for physiology, *Mol. Endocrinol.* **19** (2005), 1429–1438.
- [23] D.R. Flower, Beyond the superfamily: the lipocalin receptors, *Biochem. Biophys. Acta* **1482** (2000), 327–336.
- [24] D.R. Flower, The lipocalin protein family: a role in cell regulation, *FEBS Lett.* **354** (1994), 7–11.
- [25] D.R. Flower, The lipocalin protein family: structural and sequence overview, *Biochem. Biophys. Acta* **1482** (2000), 9–24.
- [26] T.T. Fung, E.B. Rimm, D. Spiegelman, N. Rifai, G.H. Tofler, H.C. Willett and F.B. Hu, Association between dietary patterns and plasma biomarkers of obesity and cardiovascular disease risk, *Am. J. Clin. Nutr.* **73** (2001), 61–67.
- [27] W. Goessling and S.D. Zucker, Role of apolipoprotein D in the transport of bilirubin in plasma, *Am. J. Physiol. Gastrointest. Liver Physiol.* **279** (2000), G356–365.
- [28] J.D. Graham and C.L. Clarke, Physiological action of progesterone in target tissues, *Endocr. Rev.* **18** (1997), 502–519.
- [29] J.D. Graham, C. Yeates, R.L. Balleine, S.S. Harvey, J.S. Milliken, A.M. Bilous and C.L. Clarke, Characterization of progesterone receptor A and B expression in human breast cancer, *Cancer Res.* **55** (1995), 5063–5068.
- [30] J.P. Guastalla, T. Bachelot and I. Ray-Coquard, Cyclooxygenase 2 and breast cancer. From biological concepts to therapeutic trials, *Bull. Cancer* **91** (2004), S99–108.
- [31] D.E. Haagenen Jr., G. Mazoujian, W.D. Holder Jr., S.J. Kister, and S.A. Wells Jr., Evaluation of a breast cyst fluid protein detectable in the plasma of breast carcinoma patients, *Ann. Surg.* **185** (1977), 279–285.
- [32] D.E. Haagenen Jr., G. Mazoujian, W.G. Dilley, C.E. Pedersen, S.J. Kister and S.A. Wells Jr., Breast gross cystic disease fluid analysis. I. Isolation and radioimmunoassay for a major component protein, *J. Natl. Cancer Inst.* **62** (1979), 239–247.
- [33] D.E. Haagenen, P. Stewart, W.G. Dilley and S.A. Wells, Secretion of breast gross cystic disease fluid proteins by T47D breast cancer cells in culture – modulation by steroid hormones, *Breast Cancer Res. Treat.* **23** (1992), 77–86.
- [34] R.E. Hall, J.O. Aspinall, D.J. Horsfall, S.N. Birrell, J.M. Bentel, R.L. Sutherland and W.D. Tilley, Expression of the androgen receptor and an androgen-responsive protein, apolipoprotein D, in human breast cancer, *Br. J. Cancer* **74** (1996), 1175–1180.
- [35] C. Harding, O. Osundeko, L. Tetlow, E.B. Faragher, A. Howell and N.J. Bundred, Hormonally-regulated proteins in breast secretions are markers of target organ sensitivity, *Br. J. Cancer* **82** (2000), 354–360.
- [36] C.A. Heinlein and C. Chang, The roles of androgen receptors and androgen-binding proteins in nongenomic androgen actions, *Mol. Endocrinol.* **16** (2002), 2181–2187.
- [37] L. Huang and C. Li, Leptin: a multifunctional hormone, *Cell. Res.* **10** (2000), 81–92.
- [38] C.A. Iacobuzio-Donahue, B. Ryu, R.H. Hruban and S.E. Kern, Exploring the host desmoplastic response to pancreatic carcinoma: gene expression of stromal and neoplastic cells at the site of primary invasion, *Am. J. Pathol.* **160** (2002), 91–99.
- [39] M.I. Kamboh, J.J. Albers, P.P. Majumder and R.E. Ferrell, Genetic studies of human apolipoproteins. IX. Apolipoprotein D polymorphism and its relation to serum lipoprotein lipid levels, *Am. J. Hum. Genet.* **45** (1989), 147–154.
- [40] M.K. Kang, A. Kameta, K.H. Shin, M.A. Baluda, H.R. Kim and N.H. Park, Senescence-associated genes in normal human oral keratinocytes, *Exp. Cell Res.* **287** (2003), 272–281.
- [41] V.N. Kristensen, T. Sørli, J. Geisler, N. Yoshimura, O.C. Linegjærde, I. Glad, A. Frigessi, N. Harada, P.E. Lønning and A.L. Børresen-Dale, Effects of anastrozole on the intratumoral gene expression in locally advanced breast cancer, *J. Steroid. Biochem. Mol. Biol.* **95** (2005), 105–111.
- [42] J. Lambert, P.R. Provost, Y.L. Marcel and E. Rassart, Structure of the human apolipoprotein D gene promoter region, *Biochim. Biophys. Acta* **1172** (1993), 190–192.
- [43] M.L. Lamelas, J. Vazquez, M.I. Enguita, J.C. Rodriguez, L.O. Gonzalez, A.M. Merino and F. Vizoso, Apolipoprotein D expression in metastatic lymph nodes of breast cancer, *Int. J. Surg. Investig.* **2** (2000), 285–293.

- [44] W.E. Lands, Stories about acyl chains, *Biochim. Biophys. Acta* **1483** (2000), 1–14.
- [45] C.A. Lange, J.K. Richer, T. Shen and K.B. Horwitz, Convergence of progesterone and epidermal growth factor signaling in breast cancer. Potentiation of mitogen-activated protein kinase pathways, *J. Biol. Chem.* **273** (1998), 31308–31316.
- [46] K. Laud, I. Gourdou, L. Pessemesse, J.P. Peyrat and J. Djiane, Identification of leptin receptors in human breast cancer: functional activity in the T47-D breast cancer cell line, *Mol. Cell. Endocrinol.* **188** (2002), 219–226.
- [47] O.A. Lea, T. Thorsen and S. Kvinnsland, Extracellular proteins in breast tumor cytosol, *Anticancer Res.* **7** (1987), 113–117.
- [48] O.A. Lea, Binding properties of progesterone-binding Cyst protein, PBPC, *Steroids* **52** (1988), 337–338.
- [49] O.A. Lea, S. Kvinnsland and T. Thorsen, Progesterone-binding cyst protein in human breast tumor cytosol, *Cancer Res.* **47** (1987), 6189–6192.
- [50] W.C. Leung, A. Lawrie A, S. Demaries, H. Massaeli, A. Burry, S. Yablonsky, J.M. Sarjeant, E. Fera, E. Rassart and J.G. Pickering, Apolipoprotein D and platelet-derived growth factor-BB synergism mediates vascular smooth muscle cell migration, *Circ. Res.* **95** (2004), 179–186.
- [51] E.R. Levin, Cell localization, physiology, and nongenomic actions of estrogen receptors, *J. Appl. Physiol.* **91** (2001), 1860–1867.
- [52] Z. Liu, G.Q. Chang and S.F. Leibowitz, Apolipoprotein D interacts with the long-form leptin receptor: a hypothalamic function in the control of energy homeostasis, *FASEB J.* **15** (2001), 1329–1331.
- [53] Y.S. Lopez-Boado, J. Tolivia and C. Lopez-Otin, Apolipoprotein D gene induction by retinoic acid is concomitant with growth arrest and cell differentiation in human breast cancer cells, *J. Biol. Chem.* **269** (1994), 26871–26878.
- [54] Y.S. Lopez-Boado, M. Klaus, M.I. Dawson and C. Lopez-Otin, Retinoic acid-induced expression of apolipoprotein D and concomitant growth arrest in human breast cancer cells are mediated through a retinoic acid receptor RARalpha-dependent signaling pathway, *J. Biol. Chem.* **271** (1996), 32105–32111.
- [55] Y.S. Lopez-Boado, X.S. Puente, S. Alvarez, J. Tolivia, L. Binderup L and C. Lopez-Otin, Growth inhibition of human breast cancer cells by 1,25-dihydroxyvitamin D3 is accompanied by induction of apolipoprotein D expression, *Cancer Res.* **57** (1997), 4091–4097.
- [56] R. Losel and M. Wehling, Nongenomic actions of steroid hormones, *Nat. Rev. Mol. Cell. Biol.* **4** (2003), 46–56.
- [57] C.C. Lynch, A. Hikosaka, H.B. Acuff, M.D. Martin, N. Kawai, R.K. Singh, T.C. Vargo-Gogola, J.L. Begtrup, T.E. Peterson and B. Fingleton, MMP-7 promotes prostate cancer-induced osteolysis via the solubilization of RANKL, *Cancer Cell* **7** (2005), 485–496.
- [58] M. Matsuyama, R. Yoshimura, M. Mitsuhashi, K. Tsuchida, Y. Takemoto, Y. Kawahito, H. Sano and T. Nakatani, 5-Lipoxygenase inhibitors attenuate growth of human renal cell carcinoma and induce apoptosis through arachidonic acid pathway, *Oncol. Rep.* **14** (2005), 73–79.
- [59] K.S. McCarty Jr., E. Szabo, J.L. Flowers, E.B. Cox, G.S. Leight, L. Miller, J. Konrath, J.T. Soper, D.A. Budwit and W.T. Creasman, Use of a monoclonal anti-estrogen receptor antibody in the immunohistochemical evaluation of human tumors, *Cancer Res.* **46** (1986), 4244–4248.
- [60] E.M. McGowan and C.L. Clarke, Effect of overexpression of progesterone receptor A on endogenous progestin-sensitive endpoints in breast cancer cells, *Mol. Endocrinol.* **13** (1999), 1657–1671.
- [61] J.H. Morais Cabral, G.L. Atkins, L.M. Sanchez, Y.S. Lopez-Boado, C. Lopez-Otin and L. Sawyer, Arachidonic acid binds to apolipoprotein D: implications for the protein's function, *FEBS Lett.* **366** (1995), 53–56.
- [62] P.A. Mote, S. Bartow, N. Tran and C.L. Clarke, Loss of coordinate expression of progesterone receptors A and B is an early event in breast carcinogenesis, *Breast Cancer Res. Treat.* **72** (2002), 163–172.
- [63] H. Mueller, N. Flury, S. Eppenberger-Castori, W. Kueng, F. David and U. Eppenberger, Potential prognostic value of mitogen-activated protein kinase activity for disease-free survival of primary breast cancer patients, *Int. J. Cancer* **89** (2000), 384–388.
- [64] K. Ogawa, T. Utsunomiya, K. Mimori, K. Yamashita, M. Okamoto, F. Tanaka H. Inoue, Y. Ikeda, M. Saku and S. Murayama, Genomic screens for genes upregulated by demethylation in colorectal cancer: possible usefulness for clinical application, *Int. J. Oncol.* **27** (2005), 417–426.
- [65] Online Database, The Online Mendelian Inheritance in Man (OMIM) gene map: www.ncbi.nlm.nih.gov/mapview/map_search.cgi?taxid=9606&query=APOD, John Hopkins University, 1996–2005; sited July 1, 2006.
- [66] Online Database, RSCB Protein Data Bank: www.modbase.compbio.ucsf.edu, Protein ID: Q6IBG6. Sited July 1, 2006.
- [67] C.K. Osborne and R. Schiff, Estrogen-receptor biology: continuing progress and therapeutic implications, *J. Clin. Oncol.* **23** (2005), 1616–1622.
- [68] C.K. Osborne, J. Shou, S. Massarweh and R. Schiff, Crosstalk between estrogen receptor and growth factor receptor pathways as a cause for endocrine therapy resistance in breast cancer, *Clin. Cancer Res.* **11** (2005), 865s–870s.
- [69] L. Pal, B. Dasgupta and P. Chakrabarti, 3(10)-helix adjoining alpha-helix and beta-strand-sequence and structural features and their conservation, *Biopolymers* **78** (2005), 147–162.
- [70] S. Parrinello, J.P. Coppe, A. Krtočila and J. Campisi, Stromal-epithelial interactions in aging and cancer: senescent fibroblasts alter epithelial cell differentiation, *J. Cell. Sci.* **118** (2005), 485–496.
- [71] R.C. Patel, D. Lange, W.J. McConathy, Y.C. Patel and S.C. Patel, Probing the structure of the ligand binding cavity of lipocalins by fluorescence spectroscopy, *Protein Eng.* **10** (1997), 621–625.
- [72] W.H. Pearlman, J.L. Gueriguian and M.E. Sawyer, A specific progesterone-binding component of human breast cyst fluid, *J. Biol. Chem.* **248** (1973), 5736–5741.
- [73] R. Perez, X. Matabosch, A. Llebaria, M.A. Balboa and J. Balsinde, Blockade of arachidonic acid incorporation into phospholipids induces apoptosis in U937 promonocytic cells, *J. Lipid. Res.* **47** (2006), 484–491.
- [74] P.R. Provost, Y.L. Marcel, R.W. Milne, P.K. Weech and E. Rassart, Apolipoprotein D transcription occurs specifically in non-proliferating quiescent and senescent fibroblast cultures, *FEBS Lett.* **290** (1991), 139–141.

- [75] E. Rassart, A. Bedirian, S. Do Carmo, O. Guinard, J. Sirois, L. Terrisse and R. Milne, Apolipoprotein D, *Biochim. Biophys. Acta* **1482** (2000), 185–198.
- [76] F. Ricci, S.E. Kern, R.H. Hruban and C.A. Iacobuzio-Donahue, Stromal responses to carcinomas of the pancreas: Juxtatumoral gene expression conforms to the infiltrating pattern and not the biologic subtype, *Cancer Biol. Ther.* **4** (2005), 302–307.
- [77] J.K. Richer, C.A. Lange, N.G. Manning, G. Owen, R. Powell and K.B. Horwitz, Convergence of progesterone with growth factor and cytokine signaling in breast cancer. Progesterone receptors regulate signal transducers and activators of transcription expression and activity, *J. Biol. Chem.* **273** (1998), 31317–31326.
- [78] M. Romano and J. Claria, Cyclooxygenase-2 and 5-lipoxygenase converging functions on cell proliferation and tumor angiogenesis: implications for cancer therapy, *FASEB J.* **17** (2003), 1986–1995.
- [79] D.P. Rose, E.M. Gilhooly and D.W. Nixon, Adverse effects of obesity on breast cancer prognosis, and the biological actions of leptin (review), *Int. J. Oncol.* **21** (2002), 1285–1292.
- [80] L. Ryden, B. Linderholm, N.H. Nielsen, S. Emdin, P.E. Jonsson and G. Landberg, Tumor specific VEGF-A and VEGFR2/KDR protein are co-expressed in breast cancer, *Breast Cancer Res. Treat.* **82** (2003), 147–154.
- [81] J.M. Sarjeant, A. Lawrie, C. Kinnear, S. Yablonsky, W. Leung, H. Massaeli, W. Prichett, J.P. Neinot, E. Rassart and M. Rabinovitch, Apolipoprotein D inhibits platelet-derived growth factor-BB-induced vascular smooth muscle cell proliferation by preventing translocation of phosphorylated extracellular signal related kinase 1/2 to the nucleus, *Arterioscler. Thromb. Vasc. Biol.* **23** (2003), 2172–2177.
- [82] F. Satoh, S. Umemura and R.Y. Osamura, Immunohistochemical analysis of GCDFP-15 and GCDFP-24 in mammary and non-mammary tissue, *Breast Cancer* **7** (2000), 49–55.
- [83] D.C. Sgroi, S. Teng, G. Robinson, R. Le Vangie, J.R. Hudson Jr. and A.G. Elkahoul, In vivo gene expression profile analysis of human breast cancer progression, *Cancer Res.* **59** (1999), 5656–5661.
- [84] J.S. Silva, C.E. Cox, S.A. Wells Jr., D. Paull, W.G. Dilley, K.S. McCarty Sr., B.F. Fetter, L.C. Glaubitz and K.S. McCarty Jr., Biochemical correlates of morphologic differentiation in human breast cancer, *Surgery* **92** (1982), 443–449.
- [85] J. Simard, S. Dauvois, D.E. Haagensen, C. Levesque, Y. Merand and F. Labrie, Regulation of progesterone-binding breast cyst protein GCDFP-24 secretion by estrogens and androgens in human breast cancer cells: a new marker of steroid action in breast cancer, *Endocrinology* **126** (1990), 3223–3231.
- [86] J. Simard, R. Veilleux, Y. de Launoit, D.E. Haagensen and F. Labrie, Stimulation of apolipoprotein D secretion by steroids coincides with inhibition of cell proliferation in human LNCaP prostate cancer cells, *Cancer Res.* **51** (1991), 4336–4341.
- [87] J. Simard, Y. de Launoit, D.E. Haagensen and F. Labrie, Additive stimulatory action of glucocorticoids and androgens on basal and estrogen-repressed apolipoprotein-D messenger ribonucleic acid levels and secretion in human breast cancer cells, *Endocrinology* **130** (1992), 1115–1121.
- [88] B. Singh, J.A. Berry, A. Shoher, V. Ramakrishnan and A. Lucci, COX-2 overexpression increases motility and invasion of breast cancer cells, *Int. J. Oncol.* **26** (2005), 1393–1399.
- [89] V.S. Sivaraman, H. Wang, G.J. Nuovo and C.C. Malbon, Hyperexpression of mitogen-activated protein kinase in human breast cancer, *J. Clin. Invest.* **99** (1997), 1478–1483.
- [90] K.M. Smith, R.M. Lawn and J.N. Wilcox, Cellular localization of apolipoprotein D and lecithin:cholesterol acyltransferase mRNA in rhesus monkey tissues by in situ hybridization, *J. Lipid. Res.* **31** (1990), 995–1004.
- [91] R.X. Song, R.A. McPherson, L. Adam, Y. Bao, M. Shupnik, R. Kuma and R.J. Santen, Linkage of rapid estrogen action to MAPK activation by ER alpha-Shc association and Shc pathway activation, *Mol. Endocrinol.* **16** (2002), 116–127.
- [92] J.A. Søreide, O.A. Lea and S. Kvinnsland, Progesterone binding cyst protein (PBCP) in primary breast cancer: a new prognostic factor?, *Breast Cancer Res. Treat.* **9** (1987), 123–128.
- [93] J.A. Søreide, O.A. Lea, O. Anda, A. Skarstein, J.E. Varhaug and S. Kvinnsland, Progesterone-binding cyst protein (PBCP) in operable breast cancer: correlations with prognostic factors and predictive value for effect of adjuvant tamoxifen treatment, *Anticancer Res.* **11** (1991), 601–605.
- [94] J.A. Søreide, O.A. Lea and S. Kvinnsland, Progesterone-binding cyst protein (PBCP = GCDFP-24) and steroid hormone receptors as markers of differentiation in breast cancer. Inverse relation of distribution in normal and malignant tissue of the same breast, *Anticancer Res.* **11** (1991), 1323–1326.
- [95] L. Speroff, R.H. Glass and N.G. Kase, Hormone biosynthesis, metabolism, and mechanisms of action, in: *Clinical Gynaecologic Endocrinology and Infertility*, 5th edn, C. Mitchell, ed., William & Wilkins, Baltimore, 1994, p. 53.
- [96] K. Sugimoto, J. Simard, D.E. Haagensen and F. Labrie, Inverse relationships between cell proliferation and basal or androgen-stimulated apolipoprotein D secretion in LNCaP human prostate cancer cells, *J. Steroid Biochem. Mol. Biol.* **51** (1994), 167–174.
- [97] S. Sundaram and J. Ghosh, Expression of 5-oxoETE receptor in prostate cancer cells: Critical role in survival, *Biochem. Biophys. Res. Commun.* **6** (2006), 93–98.
- [98] T. Suzuki, Y. Miki, Y. Nakamura, T. Moriya, K. Ito, N. Ohuch and H. Sasano, Sex steroid-producing enzymes in human breast cancer, *Endocr. Relat. Cancer* **12** (2005), 701–720.
- [99] E.A. Thomas, D.L. Copolov and J.G. Sutcliffe, From pharmacotherapy to pathophysiology: emerging mechanisms of apolipoprotein D in psychiatric disorders, *Curr. Mol. Med.* **3** (2003), 408–418.
- [100] E.A. Thomas, R.C. George and J.G. Sutcliffe, Apolipoprotein D modulates arachidonic acid signaling in cultured cells: implications for psychiatric disorders, *Prostaglandins Leukot. Essent. Fatty Acids* **69** (2003), 421–427.
- [101] T. Utsunomiya, K. Ogawa, K. Yoshinaga, M. Ohta, K. Yamashita, K. Mimori, H. Inoue, T. Ezaki, Y. Yoshikawa and M. Mori, Clinicopathologic and prognostic values of apolipoprotein D alterations in hepatocellular carcinoma, *Int. J. Cancer* **116** (2005), 105–109.
- [102] S. Vijayaraghavan, G.A. Hitman and P.G. Kopelman, Apolipoprotein-D polymorphism: a genetic marker for obesity and hyperinsulinemia, *J. Clin. Endocrinol. Metab.* **79** (1994), 568–570.
- [103] D.X. Wen, Y.F. Xu, D.E. Mais, M.E. Goldman and D.P. McDonnell, The A and B isoforms of the human progesterone receptor operate through distinct signaling pathways within target cells, *Mol. Cell. Biol.* **14** (1994), 8356–8364.

- [104] R.B. West, D.S. Nuyten, S. Subramanian, T.O. Nielsen, C.L. Corless, B.P. Rubin, K. Montgomery, S. Zhu, R. Patel, T. Hernandez-Boussard, J.R. Goldburn, P.O. Burn, M. van de Vijerand and M. van de Rijn, Determination of stromal signatures in breast carcinoma, *PLoS Biol.* **3** (2005), e187.
- [105] C.J. Witton, S.J. Hawe, T.G. Cooke and J.M. Bartlett, Cyclooxygenase 2 (COX2) expression is associated with poor outcome in ER-negative, but not ER-positive, breast cancer, *Histopathology* **45** (2004), 47–54.
- [106] S. Xu and P. Venge, Lipocalins as biochemical markers of disease, *Biochim. Biophys. Acta* **1482** (2000), 298–307.
- [107] J.D. Yager and N.E. Davidson, Estrogen carcinogenesis in breast cancer, *N. Engl. J. Med.* **354** (2006), 270–282.
- [108] K. Yamashita, S. Upadhyay, M. Osada M, M.O. Hoque, Y. Xiao, M. Mori, F. Sato, S.J. Meltzer and D. Sidransky, Pharmacologic unmasking of epigenetically silenced tumor suppressor genes in esophageal squamous cell carcinoma, *Cancer Cell* **2** (2002), 485–495.
- [109] J.K. Yao, E.A. Thomas, R.D. Reddy and M.S. Keshavan, Association of plasma apolipoproteins D with RBC membrane arachidonic acid levels in schizophrenia, *Schizophr. Res.* **72** (2005), 259–266.
- [110] S.X. Zhang, J.M. Bentel, C. Ricciardelli, D.J. Horsfall, D.E. Haagensen, V.R. Marshall and W.D. Tilley, Immunolocalization of apolipoprotein D, androgen receptor and prostate specific antigen in early stage prostate cancers, *J. Urol.* **159** (1998), 548–554.