

RESEARCH ARTICLE

# The Role of Tourism and Recreation in the Spread of Non-Native Species: A Systematic Review and Meta-Analysis

Lucy G. Anderson<sup>1,2\*</sup>, Steve Rocliffe<sup>3</sup>, Neal R. Haddaway<sup>4</sup>, Alison M. Dunn<sup>1</sup>

**1** School of Biology, University of Leeds, Leeds, United Kingdom, **2** Centre for Environment, Fisheries and Aquaculture Science, Weymouth, United Kingdom, **3** Environment Department, University of York, York, United Kingdom, **4** MISTRA EviEM, Royal Swedish Academy of Sciences, Stockholm, Sweden

\* [anderson.lucyg@gmail.com](mailto:anderson.lucyg@gmail.com)



**OPEN ACCESS**

**Citation:** Anderson LG, Rocliffe S, Haddaway NR, Dunn AM (2015) The Role of Tourism and Recreation in the Spread of Non-Native Species: A Systematic Review and Meta-Analysis. *PLoS ONE* 10(10): e0140833. doi:10.1371/journal.pone.0140833

**Editor:** Robert Britton, Bournemouth University, UNITED KINGDOM

**Received:** June 9, 2015

**Accepted:** September 29, 2015

**Published:** October 20, 2015

**Copyright:** © 2015 Anderson et al. This is an open access article distributed under the terms of the [Creative Commons Attribution License](https://creativecommons.org/licenses/by/4.0/), which permits unrestricted use, distribution, and reproduction in any medium, provided the original author and source are credited.

**Data Availability Statement:** All relevant data are within the paper and its Supporting Information files.

**Funding:** LGA was funded by a PhD case studentship funded by BBSRC ([bbsrc.ac.uk](http://bbsrc.ac.uk)) and the Centre for Environment, Fisheries and Aquaculture Science (Cefas) ([cefas.co.uk](http://cefas.co.uk)). SR was funded by a NERC PhD studentship and AMD was funded by a NERC IAA grant ([nerc.ac.uk](http://nerc.ac.uk)).

**Competing Interests:** The authors have declared that no competing interests exist.

## Abstract

Managing the pathways by which non-native species are introduced and spread is considered the most effective way of preventing species invasions. Tourism and outdoor recreation involve the frequent congregation of people, vehicles and vessels from geographically diverse areas. They are therefore perceived to be major pathways for the movement of non-native species, and ones that will become increasingly important with the continued growth of these sectors. However, a global assessment of the relationship between tourism activities and the introduction of non-native species—particularly in freshwater and marine environments—is lacking. We conducted a systematic review and meta-analysis to determine the impact of tourism and outdoor recreation on non-native species in terrestrial, marine and freshwater environments. Our results provide quantitative evidence that the abundance and richness of non-native species are significantly higher in sites where tourist activities take place than in control sites. The pattern was consistent across terrestrial, freshwater and marine environments; across a variety of vectors (e.g. horses, hikers, yachts); and across a range of taxonomic groups. These results highlight the need for widespread biosecurity interventions to prevent the inadvertent introduction of invasive non-native species (INNS) as the tourism and outdoor recreation sectors grow.

## Introduction

Understanding and managing the pathways by which non-native species are introduced into new regions is considered the most effective way to prevent future biological invasions [1–6]. As such, effective pathway management forms one of the Convention on Biological Diversity’s Aichi Biodiversity Targets for 2020 and is a key element of the new EU regulation 1143/2014 on the prevention and management of the introduction and spread of INNS [7,8]. However, the development of pathway management plans and biosecurity measures must be grounded in evidence about the vectors and mechanisms by which non-native species can be transported [4,5,9].

Tourism is considered to be a major pathway for the spread of non-native species [10–13]. Not only can the congregation of large numbers of people, vehicles and vessels from geographically diverse areas provide a regular supply of non-native propagules [14,15], common recreational activities such as hiking, mountain biking and off-road driving can act as forms of habitat disturbance, potentially facilitating species invasion [14,16–18]. Disturbance occurs when an activity either partially or totally destroys the plant/animal biomass in an area, changing niche opportunities for the species within the habitat [16,19]. Non-native species are often particularly successful in disturbed habitats as their superior rates of growth and reproduction enable them to quickly colonise disturbed areas [16,20,21].

Existing research has focused on the role of tourism and outdoor recreation as vectors for non-native species in terrestrial environments, notably protected areas and national parks (for example [18,20,22–24]). There, as transport vectors are often restricted, recreational activities form one of the few pathways by which non-native species can be introduced [18]. Previous studies have revealed that activities such as hiking and horse-riding can act as vectors for the dispersal of non-native seeds as well as pathogens such as *Phytophthora ramorum*, the causative agent of sudden oak death [22,25,26].

Despite the terrestrial focus in the literature to date, recreational activities can also act as vectors for the introduction of non-native species in aquatic environments [27–29]. For example, recreational boats have been a major vector for the spread of the zebra mussel *Dreissena polymorpha* and invasive non-native macrophytes between lakes and rivers within Europe, the USA and New Zealand [30,31]. In marine environments, yachts have been responsible for introducing non-native bivalves, algae, ascidians and bryozoan into ports in Australasia and the Caribbean [32–34]. Yet to date, there has been no quantitative global review of the impacts of tourism and recreation on the abundance and richness of non-native species in aquatic systems.

Internationally, tourist arrivals are expected to grow from 1 billion in 2013, to 1.8 billion by 2030 [35] and nature-based tourism (i.e. wildlife viewing and outdoor recreation, often centred around protected areas and national parks) is a key growth area [18,36–38]. As nature-based tourism and outdoor recreation (hereafter grouped under ‘recreation’ for simplicity) often take place in relatively pristine habitats, biodiversity hotspots and in developing countries which rely upon tourist income [37], it is vital to better understand the invasion pathway represented by tourist activities, so that it can be effectively managed.

Meta-analysis provides a valuable tool with which to quantitatively synthesize the results of multiple studies to identify large scale patterns and facilitate evidence-based conservation management [39,40]. The aim of this study was to conduct a systematic review and meta-analysis to quantitatively determine whether the richness and abundance of non-native species were higher in sites where recreation took place than sites where it did not in terrestrial, freshwater and marine environments.

## Materials and Methods

### Search Strategy

We performed our literature review following recognised protocols for systematic reviews and meta-analyses [41,42].

On 15 March 2014 we searched for relevant studies using three academic literature databases: Scopus, ISI Web of Science (University of Leeds database subscriptions detailed in Supplementary Information) and Science Direct.

The following Boolean search string was used in each database: ("horse riding" OR "mountain biking" OR "bicycle" OR "cyclist" OR "off-road vehicle" OR "4x4 vehicle" OR "all-terrain

*vehicle* OR *rock climbing* OR *mountaineer*\* OR *scuba div*\* OR *surf*\* OR *angl*\* OR *boat*\* OR *vessel* OR *anchor* OR *canoe* OR *kayak*\* OR *sail*\* OR *yacht*\* OR *leisure craft* OR *personal water craft* OR *cruise ship* OR *passenger ship* OR *ferry* OR *camp*\* OR *hik*\* OR *trails* OR *walking tracks* OR *paths* OR *safari* OR *ski*\* OR *snowboard*\* OR *wintersport* OR *wildlife watch*\* OR *bird watch*\* OR *visitor* OR *touris*\* OR *ecotour*\* OR *eco-tour*\* OR *passenger* OR *travel*\* OR *leisure* OR *sightsee*\* OR *footwear* OR *luggage* OR *clothing* OR *tourist transport* OR *tourist vehicle* OR *train* OR *railway* OR *car* OR *vehicle* OR *coach* OR *bus* OR *recreation* OR *aeroplane* OR *air transport* OR *airport* OR *plane* OR *human vector* OR *human activity* OR (*protected areas* OR *nature reserve* OR *national park* OR *marine reserve* OR *marine park* OR *marine protected area*) AND (*visitor* OR *user* OR *tourist*)) AND (*invasive species* OR *introduced species* OR *non-native species* OR *alien species* OR *non-indigenous species* OR *exotic species*) AND (*species richness* OR *diversity* OR *cover* OR *abundance* OR *density* OR *biomass*).

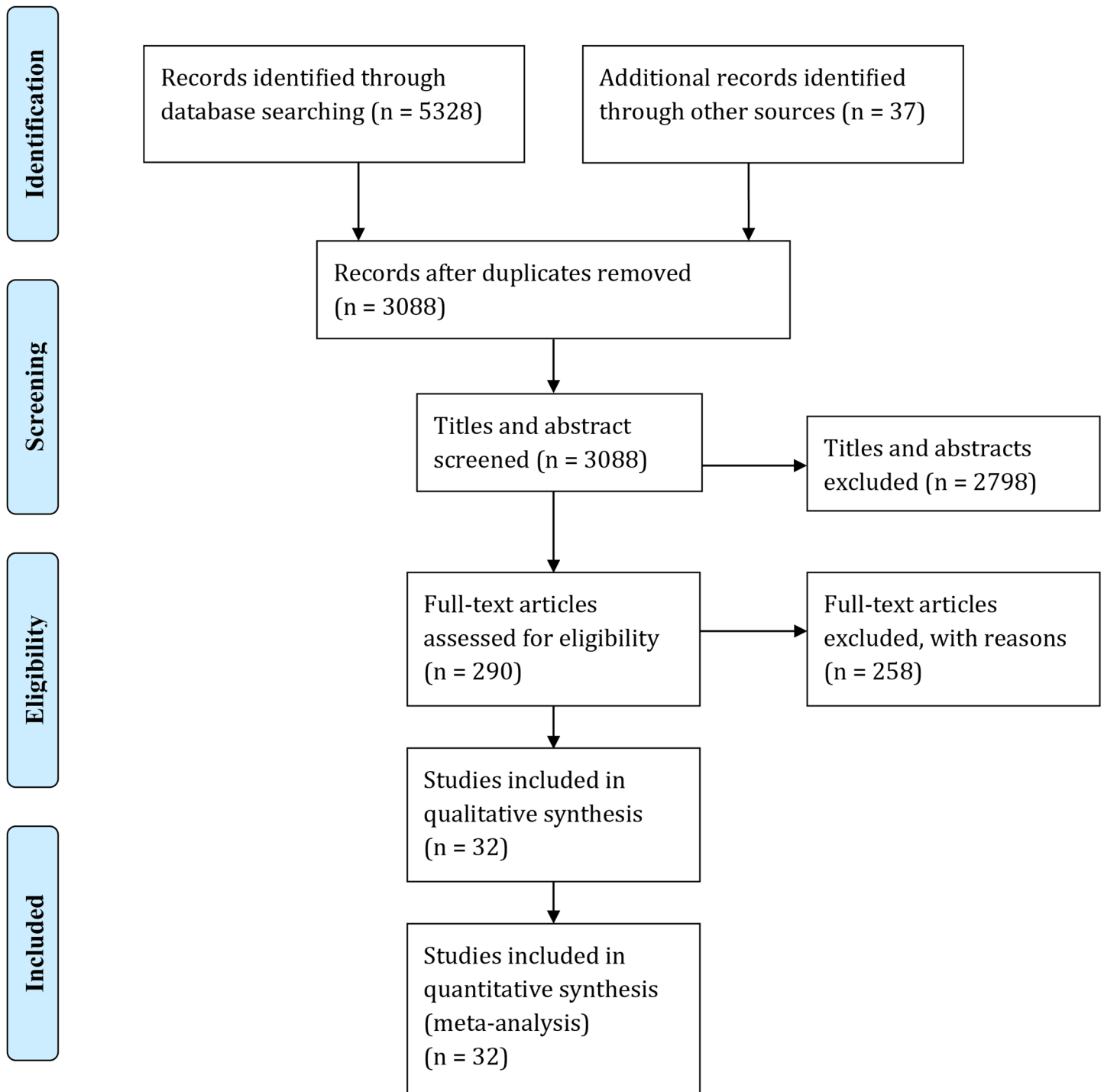
The first 100 hits of an advanced search performed using Google.com were also checked for relevance. Our search was restricted to English language search terms but included all publication years. The list of tourist and recreational activities was collated from previous studies of tourism in terrestrial, freshwater and marine environments [28,43,44]. Not all studies differentiated between invasive and non-invasive non-native species. Moreover, studies used different terms and definitions to categorize invasive and non-native species (an issue affecting in the INNS literature at large [45]). Because of this, we treated non-native species as one group, irrespective of whether they were invasive.

## Screening and data-extraction

Our original search returned 3088 studies after duplicates were removed. Titles and abstracts were vetted by two reviewers (LA and SR) and the Kappa statistic [46] was used to evaluate inter-reviewer agreement (Kappa = 0.84: near perfect level of agreement) (Fig 1).

We retrieved and reviewed 290 full text articles against inclusion and critical appraisal criteria (Table 1). Includible studies could be observational or experimental in nature but had to have the primary goal of quantifying the impact of a tourist or outdoor recreation activity, tourist-specific transport vector or visitors to a tourist destination (such as a national park or island). After full text screening, quantitative data were extracted from 32 studies and taken on to meta-analysis. This set of studies represented 37 effect size data points (species richness  $n = 18$ , abundance  $n = 19$ , Fig 1). Full details of the included studies are summarised in S1 Table.

We coded each study according to sample size, sample selection (purposive, randomised, blocked, not stated, other) spatial scale (<2 ha; 2-10ha; >10ha), temporal scale (<2 year since tourist activity began; 2–5 years or >5 years), the activity/vector in focus, habitat type (freshwater/marine/terrestrial), study taxa, study design (Before-After (BA); Control-Impact (CI); Before-After-Control-Impact (BACI); other), whether the study was observational or experimental and data on abundance (biomass, density, percentage cover, total abundance) and species richness (total number of species, mean number of species, proportion of species or Simpson's diversity index). For studies where abundance/species richness data were separated across spatial or temporal scales, we selected the mean value, weighted by the sample size at each spatial/temporal scale [47]. Where results were presented graphically, we extracted the mean and variation (e.g. standard error or 95% confidence intervals) from the figure using *ImageJ* [48]. To avoid double-counting, each study could only contribute one abundance and/or one richness effect size to the meta-analysis.



**Fig 1. PRISMA Literature Search Flow diagram.** Diagram depicts the number of studies retained and discarded at each stage of the literature search.

doi:10.1371/journal.pone.0140833.g001

### Effect size

For each study, we calculated the effect size as the difference between the abundance/species richness of non-native species in control sites and sites experiencing recreational activity using

**Table 1. Criteria for study inclusion and critical appraisal during quantitative synthesis.** Studies excluded at the full text stage are available in supplementary material.

Inclusion criteria	Critical appraisal criteria
1. Primary study including a quantitative comparison of abundance (e.g. biomass, density, percentage cover, total abundance) and/or species richness (total number of species, mean number of species, proportion of species or Simpson's diversity index) of non-native species in a site affected by a recreational activity, and a comparable control site, or at the same site before and after recreational activity began.	1. Experiment not replicated (only one treatment and one control site).
2. Study provides exact P value or a statistical result (Z, F, t, r, r <sup>2</sup> or X <sup>2</sup> ) accompanied by the sample size or degrees of freedom. Alternatively, study can provide raw data on the mean abundance/species richness in the treatment and control sites or at the same site before/after the intervention with associated sample sizes.	2. No control site, or insufficient information provided about the characteristics of the control site to assess its suitability.
	3. Study does not report confidence intervals or sample sizes.
	4. Treatment and control sites spatially confounded.
	5. Study includes evidence of intentional non-native species introduction which may confound results. For example through seeding (ski-resorts) or stocking (angling lakes).
	6. Study of road/vehicles, railways or boats where it is unclear whether the primary vehicles/vessels are industrial (e.g. cargo ships, goods trains, works vehicles) or strictly tourist related (yachts, recreational boats, tourist cruise ships etc.)

doi:10.1371/journal.pone.0140833.t001

the R package *compute.es* [49]. A value of 0.001 was added to raw abundance and species richness figures in order to calculate the effect size of studies where non-native species were not found in the control site [50]. We used *Hedges g* as a weighted and standardised effect size metric [51]. Positive *g* values indicate that non-native species richness or abundance was higher in sites with tourist activity than in undisturbed sites. A value of *g* greater than or equal to 0.8 can be interpreted as a large effect size; 0.5 a moderate effect size; and 0.2 is a small effect size [52].

### Full models

Using the *metafor* package in R [53,54], we created random effects models to calculate the grand-mean effect size across all non-native species abundance studies, and all non-native species richness studies. Random effects models are considered appropriate for ecological studies because they allow effect size estimates to vary both due to sampling error and as a result of real ecological differences between studies [55]. Due to the small sample size of our studies, we calculated bias-corrected 95% confidence intervals around the two mean effect sizes by bootstrapping 10,000 iterations using the *boot* package in R [56]. The grand mean effect size was considered to be significantly different from zero if the confidence intervals did not overlap zero.

### Factors explaining heterogeneity in effect sizes

The total heterogeneity statistic (Q) was used to determine whether the heterogeneity in grand mean effect sizes was significantly greater than what would be expected from sampling error

alone [41,51]. Where the Q statistic was significant, sub-group analyses were conducted using mixed effects models with moderators (study ID included as a random factor) to determine whether ecosystem (terrestrial/aquatic), taxa, study type (observational/experimental) or vector type could explain the variation in effect sizes. Parametric 95% confidence intervals (suitable for sample sizes of  $n < 10$  [55]) were calculated around each subgroup mean to determine whether the mean effect size had a significant effect on non-native species richness/abundance.

## Assessment of publication bias

We used a number of standard methods to check for publication bias in our analyses. A visual assessment of effect size plotted against the standard normal distribution (normal quantile plot) revealed that all data points fell within 95% confidence intervals (S1 Fig). Failsafe tests revealed that it would take an additional 864 abundance studies and additional 1415 species richness studies with effect sizes of zero to change the result of our analysis from significant to non-significant [57]. Finally, rank correlation tests were non-significant for abundance (Kendall's tau = 0.09,  $p = 0.62$ ) and species richness (Kendall's tau = 0.05,  $p = 0.79$ ) indicating that there were no significant correlations between effect size and variance. We are therefore confident that our meta-analyses are highly unlikely to be affected by publication bias.

## Results

The 32 studies included in our systematic review had a broad geographic distribution, however the majority were from North America ( $n = 13$ ), Australasia ( $n = 6$ ) and Europe ( $n = 4$ ) (Full details in S1 Table). They comprised 22 terrestrial studies, eight marine studies and two freshwater studies. Due to the small sample size of freshwater studies ( $n = 2$ ), we combined freshwater and marine studies into an "aquatic" category ( $n = 10$ ). Six key recreational activities (interventions) were identified from the studies included in our analysis. They included: visits to national parks, hiking, horse-riding, recreational boating, yachting and the recreational harvesting of shellfish.

The large positive effect sizes obtained from our meta-analyses indicate that both the abundance (mean effect size ( $g$ ) = 0.89,  $p < 0.001$ ) and species richness (mean effect size ( $g$ ) = 0.96,  $p < 0.001$ ) of non-native species were significantly higher in sites that where tourist activities took place than in control sites (Fig 2). The pattern was repeated in both terrestrial and aquatic environments, across multiple non-native taxa (including terrestrial and aquatic plants, invertebrates and fungal pathogens) and a suite of tourist-related vectors (Fig 2).

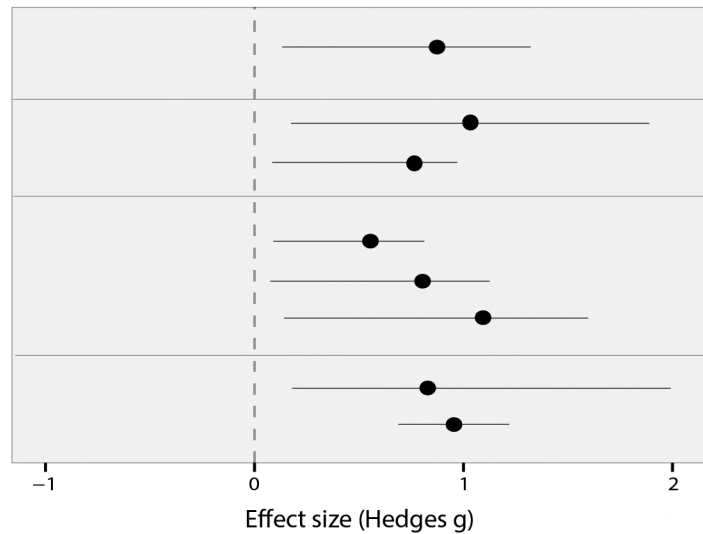
In both our non-native species richness and abundance meta-analyses, the Q statistic was significant (Table 2), indicating that the heterogeneity in effect sizes between studies was higher than would be expected by sampling error alone [41,55]. However, none of our subgroups (vector type, habitat type, study type (observational/experimental) or aquatic vs. terrestrial) were significant predictors of between-group heterogeneity (Table 2), suggesting that the impact of tourism was similar across all vectors/habitats. Due to high levels of correlation between study type (observational/experimental) and spatial scale; and between study type and temporal scale, we only included the subgroup study type in our analyses.

Forest plots of the mean effect size and bootstrapped confidence intervals for each subgroup suggested that both terrestrial and aquatic recreational activities had a large and significant positive effect on the abundance of non-native species (Fig 2A). No significant differences in effect size were detected between vectors in our analyses of non-native species abundance, however boats appeared to have a larger effect on non-native species abundance than horse riding and hiking (Fig 2A).



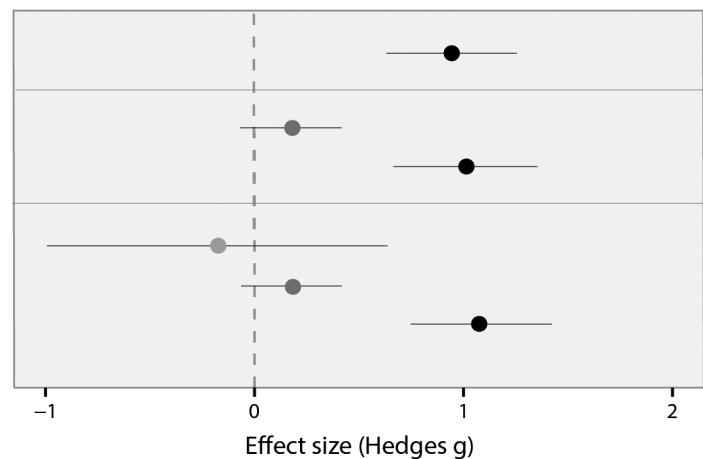
A) NON NATIVE SPECIES ABUNDANCE

Subgroup	Hedges g (95% CI)	N
Full model	0.879 (0.139 to 1.324)	19
Aquatic	1.103 (0.152 to 1.599)	8
Terrestrial	0.769 (0.090 to 0.974)	11
Horses	0.556 (0.929 to 0.813)	2
Visitors/trails	0.810 (0.837 to 1.130)	9
Boats	1.107 (0.152 to 1.599)	7
Observational	0.839 (0.191 to 1.997)	15
Experimental	0.961 (0.697 to 1.225)	4



B) NON NATIVE SPECIES RICHNESS

Subgroup	Hedges g (95% CI)	N
Full model	0.957 (0.632 to 1.282)	19
Aquatic	0.281 (-0.197 to 0.759)	4
Terrestrial	1.015 (0.670 to 1.360)	15
Horses	-0.17 (-0.954 to 0.614)	1
Boats	0.281 (-0.197 to 0.759)	4
Visitors/trails	1.085 (0.752 to 1.418)	14



**Fig 2. Meta-analysis forest plots.** Plots show the effect of recreational activities on A) non-native species abundance and B) non-native species richness. Effect size values >0 show that the species richness or abundance of non-native species was greater in sites where recreational activities took place. The mean effect size and 95% confidence interval is shown for the overall result and each sub-group analysis. Bias-corrected confidence intervals were bootstrapped for groups n<10 and parametric confidence intervals for groups n≥10. Confidence intervals that overlap the dashed line at zero are not significantly different from zero.

doi:10.1371/journal.pone.0140833.g002

In contrast, when the results were broken down by vector in our analyses of non-native species richness, only terrestrial activities (visitors to national parks/trails) had significant positive effects on non-native species richness (Fig 2B). Although boats appeared to have a positive effect on non-native species richness, this was not significant (Fig 2B). The only study investigating the impact of horse-riding on non-native species richness did not show a significant effect, however the small sample size was too small to draw a firm conclusion.

**Table 2. Total heterogeneity ( $Q_T$ ) and between-group heterogeneity ( $Q_B$ ) of effect sizes in studies comparing the abundance and richness of non-native species between sites where recreational activities took place vs. control sites.** As there was a significant correlation between study type, study area and duration of study, only study type was analysed in the subgroup analysis.

Explanatory variable	Non-native abundance				Non-native species richness			
	$Q_T$	$Q_B$	df	$p$	$Q_T$	$Q_B$	df	$p$
	98.81		17	<0.0001	88.97		18	<0.0001
Vector type		1.82	3	0.71		4.52	2	0.10
Aquatic vs. terrestrial		1.45	1	0.22		1.45	2	0.48
Ecoregion (Ter/Mar/Fw)		2.94	2	0.23		1.13	2	0.28
Study type		0.44	1	0.50		NA (only observational studies)		

doi:10.1371/journal.pone.0140833.t002

## Discussion

Effective INNS management requires an understanding of the relative importance of different pathways of spread [5]. Our results provide quantitative evidence in support of the hypothesis that tourism is a pathway for the spread of non-native species across the globe [10,12,13]. The results of our meta-analysis demonstrate that the abundance and richness of non-native species are significantly higher in sites where recreational activities took place than in control sites, and that this pattern is consistent across multiple non-native taxa, in both terrestrial and aquatic habitats, and across a suite of different vectors.

The literature search revealed that the majority of empirical studies conducted to investigate the impacts of recreational activities on INNS are terrestrial in focus (15/18 studies of non-native species richness and 11/19 studies of non-native species abundance). The meta-analysis revealed that there was a significantly higher abundance and richness of non-native species in terrestrial sites with recreational activities than control sites (Fig 2). These results were in accord with previous studies. For example, a review of 18 vegetation surveys in Kosciuszko National Park, Australia, revealed that 48 non-native species had been reported in the park's natural vegetation compared to 152 in areas where tourist activities took place [18]. In addition, a long term study of visitors to US National Parks showed that there were significantly higher numbers of non-native species in parks with higher visitor numbers [22], a pattern that was reflected in forests with/without visitor access in Poland [58]. However, unlike many previous studies this meta-analysis incorporated tropical and temperate habitats and both continental and island studies.

Although only two studies could be included, horse-riding did appear to have a significant effect on the abundance of non-native species, with significantly more reported in sites where horse-riding took place, than in control sites. We believe further control-impact studies are required to fully understand the impact of this vector.

Unlike the aquatic studies included in our meta-analysis that incorporated a range of non-native plants, algae and invertebrates, the majority of terrestrial studies (21/22) focused on non-native plants. The only non-plant terrestrial study [25] showed that the prevalence of the fungal pathogen *Phytophthora ramorum* was higher on trails than in undisturbed vegetation in a Californian National Park. The impact that terrestrial recreational activities are having on other types of non-native taxa (such as other pathogens and invertebrates) demands further attention.

Our study is the first quantitative global analysis of the relationship between recreational activities and non-native species in marine and freshwater environments. In accord with findings on terrestrial activities, our meta-analysis revealed that the abundance of aquatic non-native species—including seagrasses, seaweeds, macrophytes, molluscs, amphipods and



bryozoans—were significantly higher in aquatic environments where recreational boating or yachting took place, than in control sites. No significant differences in effect size were found between terrestrial and aquatic environments, suggesting that the impacts of recreational activities are similarly important, and require management interventions of a similar magnitude.

Recreational boating and angling are receiving growing recognition as vectors for non-native species [31,59–61] and are thought to have been responsible for over a third of non-native species introductions into Europe [62]. Examples include the introduction of the zebra mussel *Dreissena polymorpha* from England to Ireland via the hulls of recreational boats [30] with subsequent impacts on the fisheries, water treatment works and aquatic transport industries [63]; and the introduction of the Ponto-Caspian gammarid shrimp *Dikerogammarus villosus* into watersports lakes in the UK and European Alps [60,64]. In New Zealand, the distribution of the invasive non-native diatom didymo (*Didymosphenia geminata*) is consistent with angler-mediated introduction and dispersal [65]. The invasion was first reported in 2004 and had cost the New Zealand government over NZD \$127.8 million to manage by 2011 [66].

In marine environments, the introduction of non-native species through aquatic activities could potentially compromise the conservation value of marine reserves. Much like their terrestrial counterparts, marine reserves can attract high rates of visitation by tourists, leading to a congregation of potential transport vectors including boat anchors, SCUBA equipment, boat ballast and bilge water and fouled hulls [67]. The reduced levels of harvesting within marine reserves may also ironically allow non-native species that are inadvertently introduced to become more abundant [68], however others argue that marine reserves are associated with greater native species richness [69] and are therefore more resilient to biological invasions [70].

In addition to marine reserves, long distance yachts could be one of few vectors capable of introducing INNS to the marine environment surrounding oceanic islands [32], ecosystems in which species invasions are considered the most acute threat to biodiversity loss [6,71]. Yachts are thought to be responsible for the introduction of five non-native species including sponges, a macroalga, a bryozoan and a hydroid to Palmyra, an unoccupied North Pacific atoll [72] as well as introducing *Halophila stipulacea*, a non-native seagrass, to many islands across the Caribbean [34].

## The relationship between study design and effect size

Forest plots revealed that the mean effect of tourism on non-native species abundance was higher in experimental studies than observational studies, although both were significant. In our study, experimental studies occurred at smaller spatial and temporal scales than observational studies, typically < 1ha in area and < 1 year in duration. The larger effect size of experimental studies may be explained by experimental simulations being more intense or happening more suddenly than would take place in natural conditions, whereas effects of non-native species in observational studies may have been diluted by space and time [21].

## Additional impacts of tourism

We focused our study on tourist activities associated with unintentional non-native species spread. However, tourist infrastructure—for example the building of footpaths and lodges, and the planting of non-native species in hotel gardens and ski resorts—have also been associated with the intentional introduction of non-native species. For example, tourist development was identified as the main determinant of non-native plant abundance and richness in study of 37 Mediterranean Islands [73]. Similarly, 152 of the 156 non-native plants recorded in Kosciuszko National Park in Australia were associated with tourist infrastructure including ski resorts and hotel gardens [18], and the seeding of ski runs in the conversion of alpine habitats to ski resorts

is also a source of non-native species spread to neighbouring areas [74,75]. A review of the links between tourist infrastructure and the abundance/richness of non-native species would add valuable further insight into the link between tourism and non-native species.

### Issues relating to study design

A major obstacle encountered during this study was the paucity of studies that provided sufficient information to calculate an effect size. For example, 24% of the studies that reached the final stage of assessment ( $n = 69$ ) failed to meet the inclusion criteria based on the lack of a control site in their experimental design. Not only did this lead to an unintentional dominance of plant-based studies in the meta-analyses, it revealed a wider issue in ecological study design. As research techniques in applied ecology begin to follow the rigorous systematic methods which have been adopted in healthcare science, we implore ecologists to adopt balanced study designs from which effect sizes can be calculated [39,76–78]. This will facilitate the use of meta-analysis in ecology as an evidence-based conservation management tool [39,40].

### Management implications

As nature-based tourism continues to grow in popularity [36], the tourist-assisted transport of non-native species to remote habitats such as oceanic islands, polar regions (previously considered so remote they were ‘immune’ to invasions [6]) and biodiversity hotspots, could have catastrophic consequences. This is because the endemic flora and fauna living in these environments have often evolved in isolation and may therefore be less resilient to novel threats, such as non-native species and the pathogens that may accompany them [79,80]. Moreover, more than half of the world’s poorest countries fall within biodiversity hotspots and rely on nature-tourism income [37]. The introduction and subsequent impacts of non-native species into these areas could therefore have serious economic, as well as ecological, ramifications [36,37]. However, the tourist income generated in these areas could also provide a source of revenue to fund management initiatives to prevent and mitigate the impacts of INNS [81]. For example, tourism funds up to 64% of global conservation measures for some bird species, measures which include the removal of INNS from critical habitat [81]. Such investment can in turn increase potential for eco-tourism in the long term [82].

Reducing unintentional introductions through the tourism pathway will require effective prediction, surveillance, awareness-raising and control [83], and will rely on international cooperation [10]. Awareness raising initiatives have already been developed to improve the biosecurity practices of recreational water users [59], hikers [84] and airline passengers [85] and have resulted in compliance by 71% of water users in New Zealand [86]. Minimum impact codes of conduct for visitors to national parks and protected areas have been proposed [24,87], and recently established in Europe [88], as a way of reducing non-native plant introduction by hikers and horse riders, as well as visitors taking part in recreational activities (e.g. motor boating, diving, snorkelling) in marine reserves [28]. A pan-European code of conduct for recreational boating is currently being drafted [89] while inspections of tourist footwear and luggage on arrival to pristine sites such as Antarctica have been suggested as another method a way to substantially reduced propagule loads [90]. However, many of these initiatives will need to be reinforced by legislation in order to be adopted [9]. On a larger scale, disinfection protocols have been implemented for inter-island aeroplanes and boats in the Galapagos Islands where the mosquito *Culex quinquefasciatus* had frequently been transported in aircraft [79,91].

INNS are a major threat to global biodiversity. In order to meet international conservation commitments, countries are obliged to identify and manage pathways for the spread of INNS species [92]. This meta-analysis has demonstrated that tourism and recreation can be

significant pathways for the introduction of non-native species across all ecosystems. As the nature-tourism and outdoor recreation sector continues to grow [36], so too will the need for effective and long-lasting biosecurity interventions.

## Supporting Information

### S1 PRISMA Checklist. PRISMA Checklist.

(DOC)

**S1 Fig. Publication bias evaluation.** Normal quantile plots of the standardised effect sizes (*Hedges g*) against normal quantiles for the studies included in the meta-analysis to assess the responses of non-native species A) richness and B) abundance in sites where tourism/recreation took place. All points fall within the 95% confidence intervals indicating that the data are normally distributed.

(DOCX)

**S2 Fig. Forest plots.** Plots depict the effect sizes of each individual study included in the meta-analysis.

(DOCX)

**S1 Table. Details of the articles rejected from the systematic review at full text stage along with reasoning.**

(XLSX)

**S2 Table. Characteristics of the 37 studies included in the final meta-analysis.**

(XLSX)

## Acknowledgments

The authors would like to thank Paul Stebbing for reviewing a draft of the manuscript.

## Author Contributions

Conceived and designed the experiments: LGA. Performed the experiments: LGA SR. Analyzed the data: LGA SR NRH. Wrote the paper: LGA SR NRH AMD.

## References

1. Belz CE, Darrigran G, Netto OSM, Boeger WA, Ribeiro PJ. Analysis of Four Dispersion Vectors in Inland Waters: The Case of the Invading Bivalves in South America. *Journal of Shellfish Research*. 2012; 31: 777–784. doi: [10.2983/035.031.0322](https://doi.org/10.2983/035.031.0322)
2. Briski E, Wiley CJ, Bailey SA. Role of domestic shipping in the introduction or secondary spread of non-indigenous species: biological invasions within the Laurentian Great Lakes. *J Appl Ecol*. 2012; 49: 1124–1130. doi: [10.1111/j.1365-2664.2012.02186.x](https://doi.org/10.1111/j.1365-2664.2012.02186.x)
3. Caffrey J, Baars J-R, Barbour J, Boets P, Boon P, Davenport K, et al. Tackling Invasive Alien Species in Europe: the top 20 issues. *Management of Biological Invasions*. 2014; 5: 1–20. doi: [10.3391/mbi.2014.5.1.01](https://doi.org/10.3391/mbi.2014.5.1.01)
4. Chapple DG, Whitaker AH, Chapple SNJ, Miller KA, Thompson MB. Biosecurity interceptions of an invasive lizard: origin of stowaways and human-assisted spread within New Zealand. *Evolutionary Applications*. 2013; 6: 324–339. doi: [10.1111/eva.12002](https://doi.org/10.1111/eva.12002) PMID: [23467589](https://pubmed.ncbi.nlm.nih.gov/23467589/)
5. Hulme PE. Trade, transport and trouble: managing invasive species pathways in an era of globalization. *Journal of Applied Ecology*. 2009; 46: 10–18. doi: [10.1111/j.1365-2664.2008.01600.x](https://doi.org/10.1111/j.1365-2664.2008.01600.x)
6. Mack RN. Biotic invasions: causes, epidemiology, global consequences, and control. *Ecological Applications*. 2000; 10: 689–710.

7. European Parliament and the Council of the European Union. Regulation 1143/2014 on the Prevention and Management of the Introduction and Spread of Invasive Alien Species. 2014. Available: <http://eur-lex.europa.eu/legal-content/EN/TXT/PDF/?uri=CELEX:32014R1143&from=EN>
8. Secretariat of the Convention on Biological Diversity. Guidelines on biodiversity and tourism development: international guidelines for activities related to sustainable tourism development in vulnerable terrestrial, marine, and coastal ecosystems and habitats of major importance for biological diversity and protected areas, including fragile riparian and mountain ecosystems. Montreal: Secretariat of the Convention on Biological Diversity; 2004.
9. Hulme PE, Bacher S, Kenis M, Klotz S, Kühn I, Minchin D, et al. Grasping at the routes of biological invasions: a framework for integrating pathways into policy. *Journal of Applied Ecology*. 2008; 45: 403–414. doi: [10.1111/j.1365-2664.2007.01442.x](https://doi.org/10.1111/j.1365-2664.2007.01442.x)
10. Clout MN, De Poorter M. International Initiatives Against Invasive Alien Species 1. *Weed technology*. 2005; 19: 523–527.
11. Convention on Biological Diversity. Pathways of introduction of invasive species, their prioritization and management [Internet]. 2014. Available: <https://www.cbd.int/doc/meetings/sbstta/sbstta-18/official/sbstta-18-09-add1-en.pdf>
12. Kolar CS, Lodge DM. Progress in invasion biology: predicting invaders. *Trends in Ecology & Evolution*. 2001; 16: 199–204.
13. Meyerson LA, Reaser JK. Biosecurity: Moving toward a Comprehensive Approach. *BioScience*. 2002; 52: 593. doi: [10.1641/0006-3568\(2002\)052\[0593:BMTACA\]2.0.CO;2](https://doi.org/10.1641/0006-3568(2002)052[0593:BMTACA]2.0.CO;2)
14. Tobin PC, Van Stappen J, Blackburn LM. Human visitation rates to the Apostle Islands National Lakeshore and the introduction of the non-native species *Lymantria dispar* (L.). *Journal of Environmental Management*. 2010; 91: 1991–1996. doi: [10.1016/j.jenvman.2010.05.005](https://doi.org/10.1016/j.jenvman.2010.05.005) PMID: [20570035](https://pubmed.ncbi.nlm.nih.gov/20570035/)
15. Lockwood JL, Cassey P, Blackburn T. The role of propagule pressure in explaining species invasions. *Trends in Ecology & Evolution*. 2005; 20: 223–228. doi: [10.1016/j.tree.2005.02.004](https://doi.org/10.1016/j.tree.2005.02.004)
16. Jauni M, Gripenberg S, Ramula S. Non-native plant species benefit from disturbance: a meta-analysis. *Oikos*. 2014; 124: 122–129. doi: [10.1111/oik.01416](https://doi.org/10.1111/oik.01416)
17. Pickering CM, Hill W, Newsome D, Leung Y-F. Comparing hiking, mountain biking and horse riding impacts on vegetation and soils in Australia and the United States of America. *Journal of environmental management*. 2010; 91: 551–562. doi: [10.1016/j.jenvman.2009.09.025](https://doi.org/10.1016/j.jenvman.2009.09.025) PMID: [19864052](https://pubmed.ncbi.nlm.nih.gov/19864052/)
18. Pickering CM, Bear R, Hill W. Indirect Impacts of Nature Based Tourism and Recreation: The Association Between Infrastructure and the Diversity of Exotic Plants in Kosciuszko National Park, Australia. *Journal of Ecotourism*. 2007; 6: 146–157. doi: [10.2167/joe162.0](https://doi.org/10.2167/joe162.0)
19. Byers JE. Impact of non-indigenous species on natives enhanced by anthropogenic alteration of selection regimes. *Oikos*. 2002; 97: 449–458.
20. Barros A, Pickering CM. Non-native Plant Invasion in Relation to Tourism Use of Aconcagua Park, Argentina, the Highest Protected Area in the Southern Hemisphere. *Mountain Research and Development*. 2014; 34: 13–26. doi: [10.1659/MRD-JOURNAL-D-13-00054.1](https://doi.org/10.1659/MRD-JOURNAL-D-13-00054.1)
21. Britton-Simmons KH, Abbott KC. Short- and long-term effects of disturbance and propagule pressure on a biological invasion. *Journal of Ecology*. 2008; 96: 68–77. doi: [10.1111/j.1365-2745.2007.01319.x](https://doi.org/10.1111/j.1365-2745.2007.01319.x)
22. Allen JA, Brown CS, Stohlgren TJ. Non-native plant invasions of United States National Parks. *Biological Invasions*. 2008; 11: 2195–2207. doi: [10.1007/s10530-008-9376-1](https://doi.org/10.1007/s10530-008-9376-1)
23. Cowie ID, Werner PA. Alien plant species invasive in Kakadu National Park, tropical northern Australia. *Biological Conservation*. 1993; 63: 127–135.
24. Newsome D, Smith A, Moore SA. Horse Riding in Protected Areas: A Critical Review and Implications for Research and Management. *Current Issues in Tourism*. 2008; 11: 144–166. doi: [10.2167/cit336.0](https://doi.org/10.2167/cit336.0)
25. Cushman JH, Meentemeyer RK. Multi-scale patterns of human activity and the incidence of an exotic forest pathogen. *Journal of Ecology*. 2008; 96: 766–776. doi: [10.1111/j.1365-2745.2008.01376.x](https://doi.org/10.1111/j.1365-2745.2008.01376.x)
26. Pickering CM. Literature review of horse riding impacts on protected areas and a guide to the development of an assessment program. Brisbane, Qld.: Environmental Protection Agency; 2008.
27. Bax N, Williamson A, Aguero M, Gonzalez E, Geeves W. Marine invasive alien species: a threat to global biodiversity. *Marine Policy*. 2003; 27: 313–323. doi: [10.1016/S0308-597X\(03\)00041-1](https://doi.org/10.1016/S0308-597X(03)00041-1)
28. Thurstan RH, Hawkins JP, Neves L, Roberts CM. Are marine reserves and non-consumptive activities compatible? A global analysis of marine reserve regulations. *Marine Policy*. 2012; 36: 1096–1104. doi: [10.1016/j.marpol.2012.03.006](https://doi.org/10.1016/j.marpol.2012.03.006)
29. Davenport J, Davenport JL. The impact of tourism and personal leisure transport on coastal environments: A review. *Estuarine, Coastal and Shelf Science*. 2006; 67: 280–292. doi: [10.1016/j.ecss.2005.11.026](https://doi.org/10.1016/j.ecss.2005.11.026)

30. Minchin D, Maguire C, Rosell R. The zebra mussel (*Dreissena polymorpha* Pallas) invades Ireland: Human mediated vectors and the potential for rapid intranational dispersal. *Biology & Environment: Proceedings of the Royal Irish Academy*. The Royal Irish Academy; 2003. pp. 23–30. Available: <http://ria.metapress.com/index/085373k571614381.pdf>
31. Rothlisberger JD, Chadderton WL, McNulty J, Lodge DM. Aquatic Invasive Species Transport via Trailered Boats: What is Being Moved, Who is Moving it, and What Can Be Done. *Fisheries*. 2010; 35: 121–132. doi: [10.1577/1548-8446-35.3.121](https://doi.org/10.1577/1548-8446-35.3.121)
32. Floerl O, Inglis GJ. Potential for the introduction and spread of marine pests by private yachts. Hull fouling as a mechanism for marine invasive species introductions: Proceedings of a workshop on current issues and potential management strategies LS Godwin (ed) Honolulu, HI. 2003. pp. 22–28. Available: [http://www.hcri.ssri.hawaii.edu/files/research/pdf/eldredge-hull\\_foul\\_pro\\_godwin.pdf#page=27](http://www.hcri.ssri.hawaii.edu/files/research/pdf/eldredge-hull_foul_pro_godwin.pdf#page=27)
33. Thresher RE. Diversity, Impacts and Options for Managing Invasive Marine Species in Australian Waters. *Australian Journal of Environmental Management*. 1999; 6: 137–148. doi: [10.1080/14486563.1999.10648462](https://doi.org/10.1080/14486563.1999.10648462)
34. Willette DA, Chalifour J, Debrot AOD, Engel MS, Miller J, Oxenford HA, et al. Continued expansion of the trans-Atlantic invasive marine angiosperm *Halophila stipulacea* in the Eastern Caribbean. *Aquatic Botany*. 2014; 112: 98–102. doi: [10.1016/j.aquabot.2013.10.001](https://doi.org/10.1016/j.aquabot.2013.10.001)
35. World Tourism Organization. UNWTO Tourism Highlights [Internet]. 2014. Available: [http://dtxq4w60xqpw.cloudfront.net/sites/all/files/pdf/unwto\\_highlights14\\_en.pdf](http://dtxq4w60xqpw.cloudfront.net/sites/all/files/pdf/unwto_highlights14_en.pdf)
36. Balmford A, Beresford J, Green J, Naidoo R, Walpole M, Manica A. A Global Perspective on Trends in Nature-Based Tourism. Reid WV, editor. *PLoS Biology*. 2009; 7: e1000144. doi: [10.1371/journal.pbio.1000144](https://doi.org/10.1371/journal.pbio.1000144) PMID: [19564896](https://pubmed.ncbi.nlm.nih.gov/19564896/)
37. Christ C, Hillel O, Matus S, Sweeting J. Tourism and biodiversity mapping tourism's global footprint [Internet]. Washington, D.C.: Conservation International (CI); 2003. Available: [http://www.uneptie.org/pc/tourism/library/mapping\\_tourism.htm](http://www.uneptie.org/pc/tourism/library/mapping_tourism.htm)
38. Davenport L, Brockelman WY, Wright PC, Ruf K, Rubio del Valle FB. Ecotourism tools for parks. 2002; 279–306.
39. Stewart G. Meta-analysis in applied ecology. *Biology Letters*. 2010; 6: 78–81. doi: [10.1098/rsbl.2009.0546](https://doi.org/10.1098/rsbl.2009.0546) PMID: [19776064](https://pubmed.ncbi.nlm.nih.gov/19776064/)
40. Haddaway NR. A call for better reporting of conservation research data for use in meta-analyses: Improved Reporting of Results. *Conservation Biology*. 2015; 29: 1242–1245. doi: [10.1111/cobi.12449](https://doi.org/10.1111/cobi.12449) PMID: [25588313](https://pubmed.ncbi.nlm.nih.gov/25588313/)
41. Cooper HM. *Research Synthesis and Meta-Analysis: A Step-by-Step Approach*: 2. Fourth Edition edition. Los Angeles: SAGE Publications, Inc; 2009.
42. Collaboration for Environmental Evidence. Guidelines for Systematic Review and Evidence Synthesis in Environmental Management. Version 4.2 [Internet]. 2013. Available: [www.environmentalevidence.org/Documents/Guidelines/Guidelines4.2.pdf](http://www.environmentalevidence.org/Documents/Guidelines/Guidelines4.2.pdf)
43. McCrone A, New Zealand. Department of Conservation. Visitor impacts on marine protected areas in New Zealand. Wellington, N.Z.: Dept. of Conservation; 2001.
44. Pickering C, Mount A. Do tourists disperse weed seed? A global review of unintentional human-mediated terrestrial seed dispersal on clothing, vehicles and horses. *Journal of Sustainable Tourism*. 2010; 18: 239–256. doi: [10.1080/09669580903406613](https://doi.org/10.1080/09669580903406613)
45. Blackburn TM, Pyšek P, Bacher S, Carlton JT, Duncan RP, Jarošík V, et al. A proposed unified framework for biological invasions. *Trends in Ecology & Evolution*. 2011; 26: 333–339. doi: [10.1016/j.tree.2011.03.023](https://doi.org/10.1016/j.tree.2011.03.023)
46. Cohen J. Weighted kappa: Nominal scale agreement provision for scaled disagreement or partial credit. *Psychological Bulletin*. 1968; 70: 213–220. doi: [10.1037/h0026256](https://doi.org/10.1037/h0026256) PMID: [19673146](https://pubmed.ncbi.nlm.nih.gov/19673146/)
47. Shackelford G, Steward PR, Benton TG, Kunin WE, Potts SG, Biesmeijer JC, et al. Comparison of pollinators and natural enemies: a meta-analysis of landscape and local effects on abundance and richness in crops. *Biological Reviews*. 2013; 88: 1002–1021. doi: [10.1111/brv.12040](https://doi.org/10.1111/brv.12040) PMID: [23578337](https://pubmed.ncbi.nlm.nih.gov/23578337/)
48. Rasband WS. ImageJ [Internet]. U.S. National Institutes of Health, Bethesda, Maryland, USA; 2014. Available: <http://imagej.nih.gov/ij/>
49. Del Re A. compute.es: Compute Effect Sizes [Internet]. 2013. Available: <http://cran.r-project.org/web/packages/compute.es>
50. Molloy PP, McLean IB, Côté IM. Effects of marine reserve age on fish populations: a global meta-analysis. *Journal of Applied Ecology*. 2009; 46: 743–751. doi: [10.1111/j.1365-2664.2009.01662.x](https://doi.org/10.1111/j.1365-2664.2009.01662.x)
51. Hedges LV, Olkin I. *Statistical Methods for Meta-Analysis*. 1 edition. Orlando: Academic Press; 1985.



52. Cohen J. Statistical Power Analysis for the Behavioral Sciences. 2 edition. Hillsdale, N.J: Routledge; 1988.
53. R Development Core Team. R: A Language and Environment for Statistical Computing. [Internet]. Vienna, Austria: R Foundation for Statistical Computing; 2012. Available: [www.R-project.org](http://www.R-project.org)
54. Viechtbauer W. Conducting meta-analyses in R with the metafor package. *Journal of Statistical Software*. 2010; 36: 1–48.
55. Bancroft BA, Baker NJ, Blaustein AR. Effects of UVB radiation on marine and freshwater organisms: a synthesis through meta-analysis. *Ecology Letters*. 2007; 10: 332–345. doi: [10.1111/j.1461-0248.2007.01022.x](https://doi.org/10.1111/j.1461-0248.2007.01022.x) PMID: [17355571](https://pubmed.ncbi.nlm.nih.gov/17355571/)
56. Canty A, Ripley B. boot: Bootstrap R (S-Plus) Functions. R package version 1.3–13. 2014.
57. Rosenberg M. The file-drawer problem revisited: a general weighted method for calculating fail-safe numbers in metaanalysis. *Evolution*. 2005; 59: 464–468. PMID: [15807430](https://pubmed.ncbi.nlm.nih.gov/15807430/)
58. Sikorski P, Szumacher I, Sikorska D, Kozak M, Wierzba M. Effects of visitor pressure on understory vegetation in Warsaw forested parks (Poland). *Environmental Monitoring and Assessment*. 2013; 185: 5823–5836. doi: [10.1007/s10661-012-2987-0](https://doi.org/10.1007/s10661-012-2987-0) PMID: [23142878](https://pubmed.ncbi.nlm.nih.gov/23142878/)
59. Anderson LG, White PCL, Stebbing PD, Stentiford GD, Dunn AM. Biosecurity and Vector Behaviour: Evaluating the Potential Threat Posed by Anglers and Canoeists as Pathways for the Spread of Invasive Non-Native Species and Pathogens. de Leaniz CG, editor. *PLoS ONE*. 2014; 9: e92788. doi: [10.1371/journal.pone.0092788](https://doi.org/10.1371/journal.pone.0092788) PMID: [24717714](https://pubmed.ncbi.nlm.nih.gov/24717714/)
60. Bacela-Spychalska K, Grabowski M, Rewicz T, Konopacka A, Wattier R. The “killer shrimp” *Dikerogammarus villosus* (Crustacea, Amphipoda) invading Alpine lakes: overland transport by recreational boats and scuba-diving gear as potential entry vectors? 2013;
61. Kilian JV, Klauda RJ, Widman S, Kashiwagi M, Bourquin R, Weglein S, et al. An assessment of a bait industry and angler behavior as a vector of invasive species. *Biological Invasions*. 2012; doi: [10.1007/s10530-012-0173-5](https://doi.org/10.1007/s10530-012-0173-5)
62. Gallardo B, Aldridge DC. The “dirty dozen”: socio-economic factors amplify the invasion potential of 12 high-risk aquatic invasive species in Great Britain and Ireland. *Journal of Applied Ecology*. 2013; doi: [10.1111/1365-2664.12079](https://doi.org/10.1111/1365-2664.12079)
63. Kelly J, Tosh D, Dale K, Jackson A. The economic cost of invasive and non-native species in Ireland and Northern Ireland. The Northern Ireland Environment Agency and the National Parks and Wildlife Service; 2013.
64. Gallardo B, Errea MP, Aldridge DC. Application of bioclimatic models coupled with network analysis for risk assessment of the killer shrimp, *Dikerogammarus villosus*, in Great Britain. *Biological Invasions*. 2011; 14: 1265–1278. doi: [10.1007/s10530-011-0154-0](https://doi.org/10.1007/s10530-011-0154-0)
65. Kilroy C, Unwin M. The arrival and spread of the bloom-forming, freshwater diatom, *Didymosphenia geminata*, in New Zealand. *Aquatic Invasions*. 2011; 6: 249–262. doi: [10.3391/ai.2011.6.3.02](https://doi.org/10.3391/ai.2011.6.3.02)
66. Deloitte. MAF Economic Impact Assessment: didymo and other freshwater pests. 2011.
67. Burfeind DD, Pitt KA, Connolly RM, Byers JE. Performance of non-native species within marine reserves. *Biological Invasions*. 2013; 15: 17–28. doi: [10.1007/s10530-012-0265-2](https://doi.org/10.1007/s10530-012-0265-2)
68. Byers JE. Marine reserves enhance abundance but not competitive impacts of a harvested nonindigenous species. *Ecology*. 2005; 86: 487–500.
69. Lester S, Halpern B, Grorud-Colvert K, Lubchenco J, Ruttenberg B, Gaines S, et al. Biological effects within no-take marine reserves: a global synthesis. *Marine Ecology Progress Series*. 2009; 384: 33–46. doi: [10.3354/meps08029](https://doi.org/10.3354/meps08029)
70. Stachowicz JJ, Fried H, Osman RW, Whitlatch RB. Biodiversity, invasion resistance, and marine ecosystem function: reconciling pattern and process. *Ecology*. 2002; 83: 2575–2590.
71. Wilcove DS, Rothstein D, Dubow J, Phillips A, Losos E. Quantifying Threats to Imperiled Species in the United States Assessing the relative importance of habitat destruction, alien species, pollution, overexploitation, and disease. *BioScience*. 1998; 48: 607–615. doi: [10.2307/1313420](https://doi.org/10.2307/1313420)
72. Knapp IS, Godwin LS, Smith JE, Williams CJ, Bell JJ. Records of non-indigenous marine species at Palmyra Atoll in the US Line Islands. *Marine Biodiversity Records*. 2011; 4: e30.
73. Pretto F, Celesti-Grapow L, Carli E, Brundu G, Blasi C. Determinants of non-native plant species richness and composition across small Mediterranean islands. *Biological Invasions*. 2012; 14: 2559–2572. doi: [10.1007/s10530-012-0252-7](https://doi.org/10.1007/s10530-012-0252-7)
74. Titus JH, Landau F, Wester DB. Ski slope vegetation of Lee Canyon, Nevada, USA. *The Southwestern Naturalist*. 2003; 48: 491–504.
75. Titus JH, Tsuyuzaki S. Ski Slope Vegetation of Mount Hood, Oregon, U.S.A. *Arctic, Antarctic, and Alpine Research*. 1999; 31: 283. doi: [10.2307/1552259](https://doi.org/10.2307/1552259)



76. Pullin AS, Knight TM, Stone DA, Charman K. Do conservation managers use scientific evidence to support their decision-making? *Biological Conservation*. 2004; 119: 245–252. doi: [10.1016/j.biocon.2003.11.007](https://doi.org/10.1016/j.biocon.2003.11.007)
77. Pullin AS, Knight TM. Effectiveness in conservation practice: Pointers from medicine and public health. *Conserv Biol*. 2001; 15: 50–54. doi: [10.1046/j.1523-1739.2001.99499.x](https://doi.org/10.1046/j.1523-1739.2001.99499.x)
78. Sutherland WJ, Pullin AS, Dolman PM, Knight TM. The need for evidence-based conservation. *Trends in Ecology & Evolution*. 2004; 19: 305–308. doi: [10.1016/j.tree.2004.03.018](https://doi.org/10.1016/j.tree.2004.03.018)
79. Bataille A, Cunningham AA, Cedeno V, Cruz M, Eastwood G, Fonseca DM, et al. Evidence for regular ongoing introductions of mosquito disease vectors into the Galapagos Islands. *Proceedings of the Royal Society B: Biological Sciences*. 2009; 276: 3769–3775. doi: [10.1098/rspb.2009.0998](https://doi.org/10.1098/rspb.2009.0998) PMID: [19675009](https://pubmed.ncbi.nlm.nih.gov/19675009/)
80. Cox JG, Lima SL. Naiveté and an aquatic–terrestrial dichotomy in the effects of introduced predators. *Trends in Ecology & Evolution*. 2006; 21: 674–680. doi: [10.1016/j.tree.2006.07.011](https://doi.org/10.1016/j.tree.2006.07.011)
81. Steven R, Castley JG, Buckley R. Tourism Revenue as a Conservation Tool for Threatened Birds in Protected Areas. Fenton B, editor. *PLoS ONE*. 2013; 8: e62598. doi: [10.1371/journal.pone.0062598](https://doi.org/10.1371/journal.pone.0062598) PMID: [23667498](https://pubmed.ncbi.nlm.nih.gov/23667498/)
82. Glen AS, Atkinson R, Campbell KJ, Hagen E, Holmes ND, Keitt BS, et al. Eradicating multiple invasive species on inhabited islands: the next big step in island restoration? *Biological Invasions*. 2013; doi: [10.1007/s10530-013-0495-y](https://doi.org/10.1007/s10530-013-0495-y)
83. Tatem AJ. The worldwide airline network and the dispersal of exotic species: 2007–2010. *Ecography*. 2009; 32: 94–102. doi: [10.1111/j.1600-0587.2008.05588.x](https://doi.org/10.1111/j.1600-0587.2008.05588.x) PMID: [20300170](https://pubmed.ncbi.nlm.nih.gov/20300170/)
84. Kauri Dieback Programme Partners. Keep Kauri Standing: Stop Kauri dieback disease spreading [Internet]. 2014 [cited 3 Nov 2014]. Available: <http://www.kauridieback.co.nz/>
85. Wittenberg R, Cock MJW. *Invasive alien species: a toolkit of best prevention and management practices*. Wallingford, Oxon, UK; New York: CABI Pub.; 2001.
86. Anderson LG. *Managing aquatic non-native species: the role of biosecurity*. University of Leeds. 2015.
87. Ansong M, Pickering C. A global review of weeds that can germinate from horse dung. *Ecological Management & Restoration*. 2013; 14: 216–223.
88. Monaco A, Genovesi P. *European Guidelines on Protected Areas and Invasive Alien Species* [Internet]. Council of Europe; 2014. Available: [http://www.coe.int/t/dg4/cultureheritage/nature/Bern/IAS/Documents/2014/155114\\_European\\_Guidelines\\_on\\_Protected\\_Areas\\_and\\_IAS\\_print.pdf](http://www.coe.int/t/dg4/cultureheritage/nature/Bern/IAS/Documents/2014/155114_European_Guidelines_on_Protected_Areas_and_IAS_print.pdf)
89. Barton E. *European code of conduct on recreational boating and invasive alien species: Preliminary draft* [Internet]. Council of Europe; 2015. Available: <https://wcd.coe.int/com.instranet.InstraServlet?command=com.instranet.CmdBlobGet&InstranetImage=2768683&SecMode=1&DocId=2274244&Usage=2>
90. Lee JE, Chown SL. Breaching the dispersal barrier to invasion: quantification and management. *Ecological Applications*. 2009; 19: 1944–1959. PMID: [19831082](https://pubmed.ncbi.nlm.nih.gov/19831082/)
91. Causton C, Peck S. Alien Insects: Threats and Implications for Conservation of Galápagos Islands. *Annals of the Entomological Society of America*. 2005; 99: 121–143. doi: [10.1603/0013-8746\(2006\)099\[0121:AITAIF\]2.0.CO;2](https://doi.org/10.1603/0013-8746(2006)099[0121:AITAIF]2.0.CO;2)
92. Secretariat of the Convention on Biological Diversity. *Strategic Plan for Biodiversity 2011–2020 and the Aichi Targets “Living in Harmony with Nature.”* Secretariat of the Convention on Biological Diversity. 2011