

SCIENTIFIC REPORTS



OPEN

Knockout crickets for the study of learning and memory: Dopamine receptor Dop1 mediates aversive but not appetitive reinforcement in crickets

Hiroko Awata¹, Takahito Watanabe², Yoshitaka Hamanaka¹, Taro Mito², Sumihare Noji² & Makoto Mizunami¹

Received: 28 April 2015
Accepted: 05 October 2015
Published: 02 November 2015

Elucidation of reinforcement mechanisms in associative learning is an important subject in neuroscience. In mammals, dopamine neurons are thought to play critical roles in mediating both appetitive and aversive reinforcement. Our pharmacological studies suggested that octopamine and dopamine neurons mediate reward and punishment, respectively, in crickets, but recent studies in fruit-flies concluded that dopamine neurons mediates both reward and punishment, via the type 1 dopamine receptor Dop1. To resolve the discrepancy between studies in different insect species, we produced *Dop1* knockout crickets using the CRISPR/Cas9 system and found that they are defective in aversive learning with sodium chloride punishment but not appetitive learning with water or sucrose reward. The results suggest that dopamine and octopamine neurons mediate aversive and appetitive reinforcement, respectively, in crickets. We suggest unexpected diversity in neurotransmitters mediating appetitive reinforcement between crickets and fruit-flies, although the neurotransmitter mediating aversive reinforcement is conserved. This study demonstrates usefulness of the CRISPR/Cas9 system for producing knockout animals for the study of learning and memory.

Associative learning provides animals with the ability to adapt their behavior to the environment. Elucidation of basic reinforcing mechanisms for associative learning has been one of major subjects in neuroscience. We recently obtained evidence suggesting that the prediction error theory, which states that discrepancy, or error, between actual and predicted reward determines whether learning occurs¹ and most successfully accounts for associative learning in mammals², is applicable to associative learning in crickets³. The evidence we obtained thus suggests conservation of basic computational rules underlying associative learning between mammals and crickets. Thus, insects such as crickets now emerge as suitable animals to study basic neural mechanisms of associative learning.

In mammals, dopamine neurons in the midbrain are thought to play critical roles in mediating both appetitive and aversive reinforcement². Roles of dopamine neurons in mediating appetitive reinforcement have also been documented in mollusks⁴. In crickets, we observed that administration of octopamine receptor antagonists (epinastine and mianserin) impair appetitive learning but not aversive learning, whereas administration of dopamine receptor antagonists (flupentixol, fluphenazine, chlorpromazine and spiperone) impairs aversive learning but not appetitive learning, thus suggesting that octopamine and dopamine neurons mediate appetitive and aversive reinforcement, respectively^{5–8}. Octopamine and

¹Faculty of Science, Hokkaido University, Sapporo 060-0810, Japan. ²Department of Biological Science and Technology, Faculty of Engineering, The University of Tokushima, Tokushima 770-8506, Japan. Correspondence and requests for materials should be addressed to M.M. (email: mizunami@sci.hokudai.ac.jp)

dopamine neurons have also been suggested to mediate appetitive learning (with sucrose reward) and aversive learning (with electric-shock punishment), respectively, in honey bees^{9,10}. Yet, recent results obtained in the transgenic fruit-fly *Drosophila melanogaster* have yielded a different picture despite using sweet and electric-shock reinforcement as in the bee^{11–15}. In the fly, different sets of dopaminergic neurons mediate both appetitive and aversive reinforcement via the type 1 dopamine receptor Dop1 (also referred to as DUMB, DopR1 or DopRI¹⁶). In this framework, octopamine neurons have only a peripheral role for sweet-taste sensing as their signals are relayed to dopamine neurons, which convey this information to central brain structures^{11–15}. This critical difference between flies on the one hand, and crickets and bees on the other hand, is, therefore, that dopamine neurons mediate appetitive reinforcement signals in the former but not in the latter. We propose three possible reasons for this discrepancy, which we will study in the cricket. The first is that the difference is due to different methods used to knock-down dopaminergic signaling: while transgenesis provides a sophisticated way to silence neurotransmitter signaling in the fly, specificities of pharmacological antagonists used in the cricket are not perfect^{17,18}. The second is different kinds of reward used. We used water reward in our previous studies on crickets, whereas most studies on fruit-flies used sucrose reward, except for one study that used water reward¹⁹. We thus paid attention to the possibility that dopamine conveys water reward but not sucrose reward in crickets. Thirdly, reinforcing mechanisms may not be uniform among insects. The third possibility is unusual, since it is generally believed that basic mechanisms of learning and memory are conserved among different insect species.

In order to resolve the issue discussed above, we used the clustered regularly interspaced short palindromic repeats (CRISPR)/CRISPR-associated protein 9 (Cas9) system to produce knockout crickets for the *Dop1* gene. The CRISPR/Cas9 system was identified as a bacterial immune system, and RNA-guided DNA endonuclease, Cas9 protein, binds to short RNA fragments derived from the invading virus that are used as “guides” to target the destruction of viral DNA^{20,21}. The sequence of the guide RNA defines the specificity of the Cas9 nuclease in a highly predictable manner, based on base pairing with the target DNA. Reprogrammed Cas9 protein with a desired guide RNA breaks targeted double-strand DNA, resulting in mutagenesis at the target sites^{20,21}. The CRISPR/Cas9 system has been used to generate genome-edited organisms in a number of species^{22–27}.

In this study, we used the CRISPR/Cas9 system to generate *Dop1* knockout crickets and tested their capability for appetitive and aversive olfactory learning. In crickets¹⁶, as in fruit-flies¹¹ and honey bees¹⁷, a high level of *Dop1* gene expression is found in Kenyon cells of the mushroom body, which are known to play critical roles in olfactory learning in insects^{28–31}. We show that *Dop1* knockout crickets are defective in aversive learning with sodium chloride punishment but not appetitive learning with water or sucrose reward. This study demonstrates the utility of the CRISPR/Cas9 system for producing knockout animals for the study of learning and memory.

Results

Generation of *Dop1* knockout crickets using the CRISPR/Cas9 system. For knocking out the *Dop1* gene by the CRISPR/Cas9 system, we designed a guide RNA, which was targeted to the second exon of the *Dop1* gene in the cricket *Gryllus bimaculatus* (see Methods; Fig. 1). *In vitro*-transcribed Cas9 mRNA and the guide RNA were co-injected into the cricket eggs. From 15 eggs injected with the guide RNA and Cas9 mRNA, five crickets grew up to adults and they were crossed with adults of wild-type crickets to obtain F1 offspring. The results of genotyping of F1 crickets showed that one strain had a mutation in the *Dop1* target region (Fig. 1). The mutated *Dop1* sequence of the knockout crickets had a deletion of seven nucleotides across the PAM (Protospacer Adjacent Motif) sequence and the target sequence we designed, and also had replacements of seven nucleotides, insertions of three nucleotides and two duplicated regions adjacent to the target region (Fig. 1). The F1 crickets had a *Dop1* mutation heterogeneously. The heterogeneous F1s were crossed with each other, and then their offspring, F2s, were used for breeding of the knockout strain. We checked the transcribed sequence of *Dop1* of the knockout cricket by RT-PCR or 3'RACE using specific primers of the cricket *Dop1*. None of the amplicons were found from cDNA of the knockout cricket brain (Supplementary Fig. S1). We used F3 or F4 having homogeneous *Dop1* mutation in the following learning experiments.

The CRISPR/Cas9 system sometimes causes unexpected mutations in some regions having sequences similar to the original target because the system requires only 20 nucleotides adjacent to the PAM sequence (NGG)^{20,21}. We thus sequenced possible off-target regions of the *Dop1* gene. A BLAST (Basic Local Alignment Search Tool) + survey of the genomic sequence of *Gryllus bimaculatus* (T.M. *et al.*, unpublished data) with the *Dop1* target sequence showed seven potential off-target regions, and we checked the sequences of the most similar three regions (Fig. 2). The three off-target regions did not have any mutations in *Dop1* knockout crickets compared to corresponding sequences in wild-type crickets. We concluded that the CRISPR/Cas9 system did not have an off-target effect in the *Dop1* knockout strain.

***Dop1* knockout crickets exhibit defects in aversive learning but not in appetitive learning.**

Dop1 knockout crickets exhibited normal viability and external morphology, and no obvious behavioral abnormality was detected by visual inspection. We first investigated whether *Dop1* knockout crickets exhibit aversive olfactory learning. *Dop1* knockout crickets and wild-type crickets (controls) were

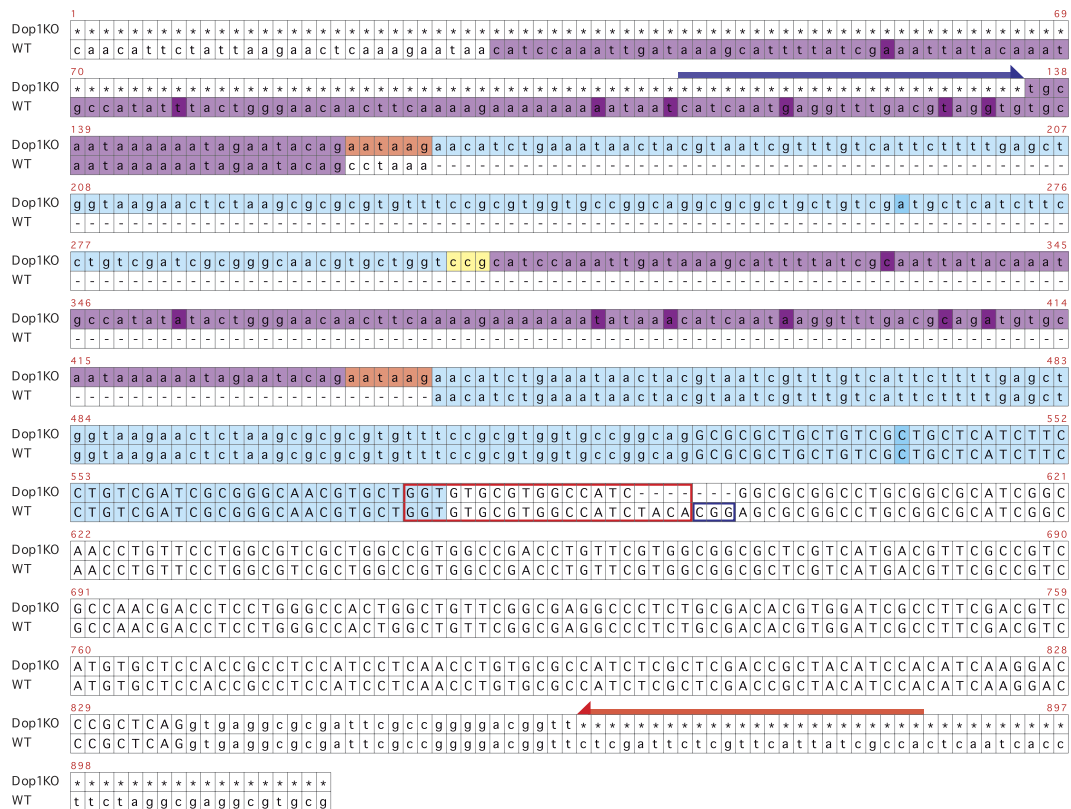


Figure 1. Target region of *Dop1* for the CRISPR/Cas9 system. The *Dop1* genomic sequence from *Dop1* knockout (KO) crickets (the upper rows) were aligned with the corresponding region of wild-type (WT) crickets shown in the lower rows. The target region and the adjacent PAM sequence for CRISPR/Cas9 (shown by red or blue squares, respectively) are located on the second exon of *Dop1*. *Dop1* knockout has a deletion of seven nucleotides over the target and the PAM in addition to two duplicated regions (purple- or light blue-shaded) and three insertions (red- or yellow-shaded). The same color-shaded regions show almost the same sequences except eight different nucleotides (dark-colored ones). The arrows show primers used to screen *Dop1* knockout crickets. The uppercase and lowercase letters show the coding sequence and the intron of *Dop1*, respectively. The dashes and asterisks indicate missing and unidentified regions, respectively.

Scaffold238643_cov53

Dop1KO A G T T A A A A T T C C T T A A G C T G C C G T G T A G A T G G C C G A C G G A T G T A T G T G T G C G C C G T G T
 WT A G T T A A A A T T C C T T A A G C T G C C G T G T A G A T G G C C G A C G G A T G T A T G T G T G C G C C G T G T

Scaffold563_cov100

Dop1KO C A C A C C T C C T T G C C C G T G G G C G T G T A G A T G G C C A C G G T G T G C C A G C G C G A T G A A G T A
 WT C A C A C C T C C T T G C C C G T G G G C G T G T A G A T G G C C A C G G T G T G C C A G C G C G A T G A A G T A

Scaffold2541_cov95

Dop1KO C A G A G T G C T T A T C G C A A C T A C C G T G T A G A T G G C C A A G C C A A A A A T G T C A T T G A A A
 WT C A G A G T G C T T A T C G C A A C T A C C G T G T A G A T G G C C A A G C C A A A A A T G T C A T T G A A A

Figure 2. Potential regions for off-targeting effects in *Dop1* knockout crickets. The top three possible regions for off-target effects were sequenced. The potential regions of *Dop1* knockout (upper row) and wild type (lower row) were aligned. The potential regions are surrounded by red-colored squares. No differences between *Dop1* knockout and wild-type sequences were found in the potential regions or in their adjacent several dozen nucleotides regions.

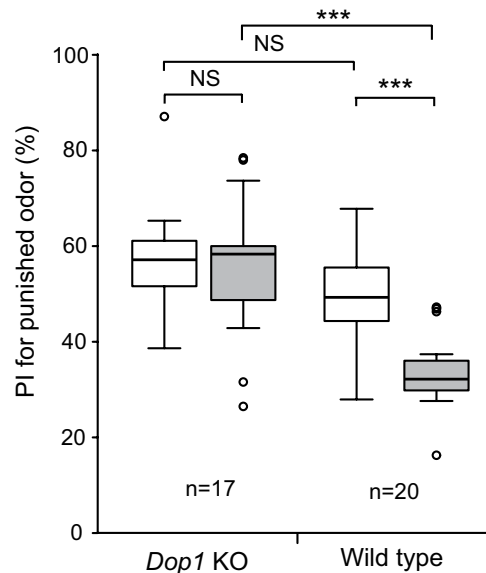


Figure 3. Impaired aversive learning in *Dop1* knockout crickets. *Dop1* knockout crickets and wild-type crickets were subjected to four-trial aversive conditioning with sodium chloride punishment, with an inter-trial interval (ITI) of 5 min. In both groups, relative preference between the punished odor (CS) and control odor was tested before and at 30 min after training. Maple odor and vanilla odor were used for conditioning, one of which was used as CS and the other was used as control. Preference indexes (PIs) for the punished odor before (white bars) and after (grey bars) training are shown as box and whisker diagrams. The line in the box is the median and the box represents the 25–75 percentiles. Whiskers extend to extreme values as long as they are within a range of $1.5 \times$ box length from the upper or lower quartiles. Any data outside the whiskers (outliers) are shown as dots. Odor preferences before and after training were compared by the WCX test. Odor preferences after training were compared between groups by the M-W test. The results of statistical comparisons are shown by asterisks (***) $P < 0.001$, NS $P > 0.05$, adjusted by Holm's method). The number of animals tested is shown at each data point.

individually trained to associate an odor with 20% sodium chloride solution. The effect of training was evaluated by testing relative preference between aversively conditioned odor and control odor not used in training before and at 30 min after conditioning. Wild-type crickets exhibited a significant decrease of the preference for punished odor after training than that before training (Fig. 3: $W = 202$, $p = 0.00019$, Wilcoxon's (WCX) test, adjusted by Holm's method, sample numbers shown in legends), indicating that aversive learning is successful. In contrast, the preference for punished odor did not significantly differ before and after training in *Dop1* knockout crickets (Fig. 3: $W = 72$, $p = 0.85$, WCX test, adjusted by Holm's method). Between-group comparison showed that the preference before training did not significantly differ between the two groups (Fig. 3: $U = 227$, $p = 0.18$, M-W test, adjusted by Holm's method), but the preference for punished odor after training of *Dop1* knockout crickets was significantly greater than that of wild-type crickets (Fig. 3: $U = 303$, $p = 0.00016$; Mann-Whitney (M-W) test, adjusted by Holm's method).

Because dopamine controls a variety of behaviors in insects^{32,33}, we should be cautious that *Dop1* knockout crickets may be defective in sensory and motor functions necessary for learning and for responding to the odors in the test. All *Dop1* knockout crickets used in this study exhibited normal avoidance responses to NaCl solution: when an NaCl solution was attached to the mouth, they immediately retracted from the solution. Thus, defects in aversive learning were not due to impaired perception of NaCl punishment. Odor perception of *Dop1* knockout crickets was intact, as evidenced by intact appetitive odor learning described below. During testing, knockout crickets exhibited normal locomotory activity and exploration of odor sources. Moreover, knockout crickets that received appetitive conditioning training exhibited an increase in relative time to visit the conditioned odor compared to that before training (see below), indicating that sensory and locomotor functions necessary to perceive and visit the conditioned odor were intact in the knockout crickets.

We next studied whether *Dop1* knockout crickets acquire appetitive learning with water reward. *Dop1* knockout crickets and wild-type crickets were individually trained to associate an odor with water reward. *Dop1* knockout crickets exhibited a significant increase of the preference for rewarded odor after training compared to that before training (Fig. 4a: $W = 0$, $p = 0.00000000081$, WCX test, adjusted by Holm's method), as did wild-type crickets (Fig. 4a: $W = 4$, $p = 0.00046$, WCX test, adjusted by Holm's

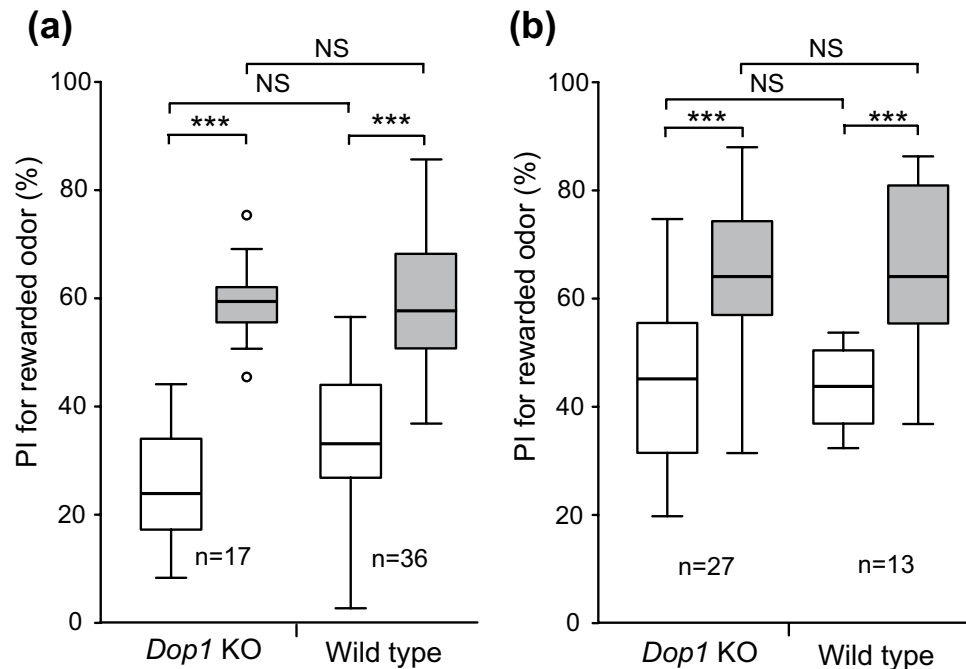


Figure 4. No impairment of appetitive learning with water or sucrose reward in *Dop1* knockout crickets. *Dop1* knockout crickets and wild-type crickets were subjected to two-trial appetitive conditioning with water (a) or sucrose (b) reward, with the ITI of 5 min. In both groups, relative preference between the rewarded odor (CS) and control odor was tested before and at 30 min after training. For conditioning with water reward, peppermint odor was used as CS and vanilla odor was used as control. For conditioning with sucrose reward, maple odor and vanilla odor were used, one of which was used as CS and the other was used as control. Preference indexes (PIs) for the rewarded odor before (white bars) and after (grey bars) training are shown as box and whisker diagrams. Odor preferences before and after training were compared by the WCX test. Odor preferences after training were compared between groups by the M-W test. The results of statistical comparisons are shown by asterisks (***) $P < 0.001$, NS $P > 0.05$, adjusted by Holm's method). The number of animals tested is shown at each data point.

method), indicating that the appetitive learning with water reward is successful. Between-group comparison showed that preferences for rewarded odor before and after training in *Dop1* knockout crickets did not significantly differ from those in wild-type crickets (Fig. 4a: before, $U = 205.5$, $p = 0.11$; after, $U = 315$, $p = 0.87$; M-W test, adjusted by Holm's method).

Finally, we studied whether *Dop1* knockout crickets exhibit appetitive learning with sucrose reward. Wild-type and *Dop1* knockout crickets were subjected to appetitive conditioning to associate an odor with 0.5 M sucrose solution. *Dop1* knockout crickets exhibited significantly increased preference for rewarded odor after training compared to that before training (Fig. 4b: $W = 17$, $p = 0.000012$, WCX test, adjusted by Holm's method), as did wild-type crickets (Fig. 4b: $W = 0$, $p = 0.00073$, WCX test, adjusted by Holm's method), indicating that the appetitive learning with sucrose reward is successful. Between-group comparison showed that preferences for rewarded odor before and after training in *Dop1* knockout crickets did not significantly differ from those in the wild-type crickets (Fig. 4b: before, $U = 176$, $p = 1.0$; after, $U = 174.5$, $p = 0.99$; M-W test, adjusted by Holm's method). We thus conclude that the *Dop1* dopamine receptor is required for aversive learning with sodium chloride punishment but is dispensable for appetitive learning with water or sucrose reward.

Discussion

Biogenic amines play critical roles in associative learning in mammals² and insects^{15,29,34,35}. The aim of this study is to resolve the discrepancy between results of studies on crickets and fruit-flies concerning the roles of dopamine in mediating reinforcing signals in associative learning. We previously suggested that dopamine mediates aversive but not appetitive reinforcement in crickets⁵⁻⁷, whereas results of studies on fruit-flies led to the conclusion that dopamine and *Dop1* dopamine receptor mediate both appetitive and aversive reinforcing signals^{15,19,36}. In the present study, we generated *Dop1* knockout crickets using the CRISPR/Cas9 system and found that *Dop1* knockout crickets exhibit impairment in aversive learning but not in appetitive learning. This impairment was not due to impairment of sensory or motor functions necessary for learning and for responding to odors in the test. We thus conclude that *Dop1*

participates in aversive learning but not in appetitive learning in crickets. This differs from findings in fruit-flies that *Dop1* is required for both appetitive and aversive learning^{11–14}, suggesting that the neurotransmitter mediating appetitive reinforcement differs in crickets and fruit-flies, in contrast to conserved role of dopamine in mediating aversive reinforcement between them. It can be argued that dopamine receptors other than *Dop1* may participate in appetitive learning in crickets. We suppose that this is less likely since we observed that all dopamine receptor antagonists we tested impaired aversive learning but not appetite learning in crickets^{6–8}. However, more studies are clearly needed to resolve this issue.

The CRISPR/Cas9 system provides a convenient method for making modifications to a specific gene, but it should be cautioned that the system may have an off-target effect in that it causes mutations in sequences similar to the target gene^{20,21}. DNA sequencing of some plausible off-target regions in *Dop1* knockout crickets, however, showed no mutations in areas with sequences similar to the target one. Thus, the impaired aversive learning is no doubt due to a defect of the *Dop1* gene. Since the CRISPR/Cas9 system enables easy simultaneous targeting of multiple genes²³, it can be applied to investigate interactions between multiple molecules. It would be an intriguing question whether crickets with double knockout of *Dop1* and the gene coding for the octopamine receptor mediating appetitive reinforcement can still learn.

It can be argued that impaired aversive learning in *Dop1* knockout crickets may be due to defects in the formation of proper neural circuits in the brain during development, not due to the requirement of *Dop1* in aversive learning. In addition, since this study used only one allele of the *Dop1* mutant, the possibility that impaired aversive learning is due to other causes, such as secondary mutation and genetic background is not fully ruled out. However, the perfect match of the defects observed in *Dop1* knockout crickets and those caused by administration of dopamine receptor antagonists^{5–7} strongly argues for an acute role of *Dop1* in aversive learning. An approach to fully resolve this issue is to use RNAi, which is highly successful in crickets^{16,37,38}, and we plan to perform a *Dop1* RNAi study. Moreover, results of further studies with RNAi, as well as studies on knockout crickets using CRISPR/Cas9 (this study) and TALENs^{39,40}, should clarify the roles of dopamine receptors other than *Dop1*, as well as octopamine receptors, in appetitive and aversive learning in crickets.

We recently obtained evidence suggesting that the prediction error theory, which states that the discrepancy, or error, between actual and predicted reward determines whether learning occurs¹ and is known to best account for associative learning in mammals², is applicable to crickets³. Concerning the neurotransmitters mediating reinforcement in associative learning, we obtained evidence to suggest that octopamine mediates appetitive prediction error signals in crickets³, although whether dopamine mediates aversive prediction error signals remains to be investigated. In mammals, there is strong evidence that dopamine neurons in the midbrain mediate appetitive prediction error signals² but whether they also mediate aversive prediction error signals remains controversial^{41,42}. Future electrophysiological studies on dopamine and octopamine neurons projecting to the mushroom body, a higher-order associative center participating in olfactory learning^{29,31}, will be promising to clarify the extent to which the mechanisms of prediction error computation are conserved among different phyla.

If neurotransmitters mediating appetitive reinforcement signals indeed differ between crickets and fruit-flies, it would be interesting to address the question of how such diversity has evolved. Since crickets (orthoptera) are evolutionary basal species and fruit-flies (diptera) are highly derived, and since octopamine is suggested to mediate appetitive reinforcement in honey bees^{9,10}, one hypothesis that emerges is that the neurotransmitter mediating appetitive reinforcement altered from octopamine to dopamine at a point during the course of evolution of dipteran insects. To evaluate this and other possibilities, studies on species other than fruit-flies, crickets and honey bees, such as moths and cockroaches, are required. Moreover, since dopamine is thought to mediate appetitive and aversive reinforcement in mammals² and to mediate appetitive reinforcement in mollusks²⁷, consideration of evolutionary history of appetitive and aversive reinforcement signals among different phyla should become a fascinating future research subject. Importantly, the CRISPR/Cas9 system has enabled to edit targeted gene in essentially any organism and thus should greatly accelerate studies on neural mechanisms of associative learning in species in which sophisticated methods of genetic analysis have hitherto been not applicable.

Methods

Insects. Adult male crickets, *Gryllus bimaculatus*, at 1–2 weeks after the imaginal molt were used. They were reared in a 12h:12h light:dark cycle and were fed insect food pellets (Oriental Yeast, Tokyo, Japan) and water *ad libitum*. For three days prior to learning experiments with either NaCl punishment or water reward, crickets were given food *ad libitum* but were deprived of drinking water to enhance motivation to uptake water. For three days prior to learning experiments with sucrose reward, crickets were given water *ad libitum* but were deprived of food.

Generation of *Dop1* knockout crickets. For generating a knockout line using the CRISPR/Cas9 system, we selected 20bp of a target region for the plasmid of T7 promoter transcription (GGN₁₈), which is followed by an NGG protospacer adjacent motif (PAM), using a web-based tool, ZiFiT Targeter Version 4.2 CRISPR/Cas nucleases (<http://zifit.partners.org/ZiFiT/>). The genomic sequence of *Dop1* of *G. bimaculatus*^{16,43} was surveyed and candidates of the target region were listed up. We checked

nucleotide similarity between those candidate sequences and other biogenic amine receptors and chose a *Dop1*-specific sequence, which is located in the second exon of *Dop1*, as a target. For the guide RNA transcription, pDR274 vector⁴⁴ (Addgene) was used. Two synthesized oligonucleotides including the target sequence (Fw; TAGGTGTGCGTGCCATCTACA, Rv; AAAGTGTAGATGGCCACGCACA) were annealed after phosphorylation of 5' ends. The annealed oligonucleotides were inserted into BsaI digested and dephosphorylated pDR274 vector. DraI restriction enzyme was used to digest the target sequence-inserted pDR274 to prepare the transcription template. For the Cas9 mRNA transcription template, pMLM3613⁴⁴ (Addgene) was linearized by PmeI restriction enzyme. Both the guide RNA and Cas9 mRNA were transcribed using an mMessage mMachine T7 Transcription Kit (Ambion) according to the manufacturer's instructions. Transcribed guide RNA and Cas9 mRNA (500 ng/ μ l each) were injected into cricket eggs within 5 hours after oviposition. The injection procedure for cricket eggs and the screening scheme for generating a mutant cricket line were previously described^{39,40}. Because it was proved that the *Dop1* knockout crickets had an insertion of several hundred nucleotides on *Dop1* genomic DNA as shown in Fig. 1, genotyping PCR with KOD Fx Neo (TOYOBO) was performed using crude alkaline extracts from the tibia of the foreleg to distinguish *Dop1*-mutated offspring of injected crickets from wild-type ones. The primers used are shown as arrows in Fig. 1.

Training and testing. We used classical conditioning and operant testing procedures described previously^{5,45}. Either maple odor or vanilla odor was used as a conditioned stimulus (CS) in aversive conditioning⁵ and appetitive conditioning with sucrose reward. Peppermint odor was used as a CS in appetitive conditioning with water reward⁴⁶. A syringe containing 20% NaCl solution, water or 0.5M sucrose solution was used as an unconditioned stimulus (US). A filter paper soaked with the CS odor was attached to the needle of the syringe. A piece of filter paper was placed above the cricket's head so as to present an odor, and then water, sucrose solution or NaCl solution was presented to the mouth. After the pairing trials, the air in the beaker was ventilated. The crickets were subjected to two trials of appetitive conditioning or four trials of aversive conditioning with an inter-trial interval (ITI) of 5 min. Crickets that did not exhibit aversive response to NaCl solution or appetitive response to water or sucrose solution were not used in the experiment. Such crickets were less than 3% in both wild-type and *Dop1* knockout groups.

The procedure for the odor preference test was described elsewhere^{5,45}. All crickets were subjected to odor preference tests before and at 30 min after conditioning. Crickets subjected to aversive conditioning trials with NaCl solution or appetitive conditioning trials with sucrose reward were subjected to dual-choice preference tests between maple odor and vanilla odor, one of which was used as a CS and the other used as a control stimulus, and crickets subjected to appetitive conditioning trials with water reward were subjected to preference tests between peppermint odor (CS) and vanilla odor (control odor). The floor of the test chamber of the test apparatus had two holes that connected the chamber with two odor sources. Each odor source consisted of a plastic container containing a filter paper soaked with odor essence, covered with a fine gauze net. Three containers were mounted on a rotative round holder and two of the three odor sources could be located simultaneously beneath the holes of the test chamber. Before the odor preference test, a cricket was transferred to the waiting chamber and left for about 4 min to become accustomed to the surroundings. Then the cricket was allowed to enter the test chamber and the test started. Two min later, the relative positions of the odor sources were exchanged by rotating the container holder. The preference test lasted for 4 min.

Data analysis. We considered a cricket visited an odor source when the cricket probed the gauze net covering the odor source with its mouth or palpi. The time spent visiting each odor source was measured cumulatively. Relative preference for the conditioned odor was determined using the preference index (PI) defined as $t_p/(t_p + t_{up}) \times 100$ (%), where t_p was the time spent exploring the odor paired with reward or punishment and t_{up} was the time spent exploring the odor not used in training of absolute appetitive conditioning or the odor presented alone without pairing with punishment in training of differential aversive conditioning. Because many of our data violated the assumption of a normal distribution, we used non-parametric tests. We compared odor preferences after training with those before training in each animal group by the Wilcoxon signed-rank test (WCX test). We also compared preferences after training between different groups by the Mann-Whitney U test (M-W test). For multiple comparisons, Holm's method was used for adjusting the P value.

References

- Rescorla, R. A. & Wagner, A. R. [A theory of Pavlovian conditioning: Variations in the effectiveness of reinforcement and nonreinforcement] *Classical Conditioning II* [Black, A. & Prokasy, W. R. (eds)] [64–99] (Academic Press, New York, 1972).
- Schultz, W. Behavioral theories and the neurophysiology of reward. *Annu. Rev. Psychol.* **57**, 87–115 (2006).
- Terao, K., Matsumoto, Y. & Mizunami, M. Critical evidence for the prediction error theory in associative learning. *Sci. Rep.* **5**, 8929 (2015).
- Brembs, B., Lorenzetti, F. D., Reyes, F. D., Baxter, D. A. & Byrne, J. H. Operant reward learning in *Aplysia*: neuronal correlates and mechanisms. *Science* **296**, 1706–1709 (2002).
- Unoki, S., Matsumoto, Y. & Mizunami, M. Participation of octopaminergic reward system and dopaminergic punishment system in insect olfactory learning revealed by pharmacological study. *Eur. J. Neurosci.* **22**, 1409–1416 (2005).

6. Unoki, S., Matsumoto, Y. & Mizunami, M. Roles of octopaminergic and dopaminergic neurons in mediating reward and punishment signals in insect visual learning. *Eur. J. Neurosci.* **24**, 2031–2038 (2006).
7. Nakatani, Y. *et al.* Why the carrot is more effective than the stick: Different dynamics of punishment memory and reward memory and its possible biological basis. *Neurobiol. Learn. Mem.* **92**, 370–380 (2009).
8. Mizunami, M. *et al.* Roles of octopaminergic and dopaminergic neurons in appetitive and aversive memory recall in an insect. *BMC Biol.* **7**, 46 (2009).
9. Hammer, M. R. & Menzel, R. Multiple sites of associative odor learning as revealed by local brain microinjections of octopamine in honeybees. *Learn. Mem.* **5**, 146–156 (1998).
10. Vergoz, V., Roussel, E., Sandoz, J. C. & Giurfa, M. Aversive learning in honeybees revealed by the olfactory conditioning of the sting extension reflex. *PLoS One* **2**, e288 (2007).
11. Kim, Y. C., Lee, H. G. & Han, K. A. D1 dopamine receptor dDA1 is required in the mushroom body neurons for aversive and appetitive learning in *Drosophila*. *J. Neurosci.* **27**, 7640–7647 (2007).
12. Selcho, M., Pauls, D., Han, K. A., Stocker, R. F. & Thum, A. S. The role of dopamine in *Drosophila* larval classical olfactory conditioning. *PLoS One* **4**, e5897 (2009).
13. Liu, C. *et al.* A subset of dopamine neurons signals reward for odour memory in *Drosophila*. *Nature* **488**, 512–516 (2012).
14. Burke, C. J. *et al.* Layered reward signalling through octopamine and dopamine in *Drosophila*. *Nature* **492**, 433–437 (2012).
15. Waddell, S. Reinforcement signalling in *Drosophila*; dopamine does it all after all. *Curr. Opin. Neurobiol.* **23**, 324–329 (2013).
16. Hamada, A. *et al.* Loss-of-function analyses of the fragile X-related and dopamine receptor genes by RNA interference in the cricket *Gryllus bimaculatus*. *Dev. Dyn.* **2238**, 2025–2033 (2009).
17. Mustard, J. A., Beggs, K. T. & Mercer, A. R. Molecular biology of the invertebrate dopamine receptors. *Arch. Insect Biochem. Physiol.* **59**, 103–117 (2005).
18. Beggs, K. T., Tyndall, J. D. & Mercer, A. R. Honey bee dopamine and octopamine receptors linked to intracellular calcium signaling have a close phylogenetic and pharmacological relationship. *PLoS One* **6**, e26809 (2011).
19. Lin, S. *et al.* Neural correlates of water reward in thirsty *Drosophila*. *Nat. Neurosci.* **17**, 1536–1542 (2014).
20. Cong, L. *et al.* Multiplex genome engineering using CRISPR/Cas systems. *Science* **339**, 819–823 (2013).
21. Mali, P. *et al.* RNA-guided human genome engineering via Cas9. *Science* **339**, 823–826 (2013).
22. Jiang, W. *et al.* Demonstration of CRISPR/Cas9/sgRNA-mediated targeted gene modification in *Arabidopsis*, tobacco, sorghum and rice. *Nucleic Acids Res.* **41**, e188 (2013).
23. Wang, H. *et al.* One-step generation of mice carrying mutations in multiple genes by CRISPR/Cas-mediated genome engineering. *Cell* **153**, 910–918 (2013a).
24. Wang, Y. *et al.* The CRISPR/Cas system mediates efficient genome engineering in *Bombyx mori*. *Cell Res.* **23**, 1414–1416 (2013b).
25. Gratz, S. J. *et al.* Highly specific and efficient CRISPR/Cas9-catalyzed homology-directed repair in *Drosophila*. *Genetics* **196**, 961–971 (2014).
26. Yasue, A. *et al.* Highly efficient targeted mutagenesis in one-cell mouse embryos mediated by the TALEN and CRISPR/Cas systems. *Sci. Rep.* **4**, 5705 (2014).
27. Gratz, S. J. *et al.* Genome engineering of *Drosophila* with the CRISPR RNA-guided Cas9 nuclease. *Genetics* **194**, 1029–1035 (2013).
28. Giurfa, M. Cognitive neuroethology: dissecting non-elemental learning in a honeybee brain. *Curr. Opin. Neurobiol.* **13**, 726–735 (2003).
29. Davis, R. L. Traces of *Drosophila* memory. *Neuron* **70**, 8–19 (2011).
30. Watanabe, H., Matsumoto, S. C., Nishino, H. & Mizunami, M. Critical roles of mecaminergic mushroom body neurons in insect olfactory learning. *Neurobiol. Learn. Mem.* **95**, 1–13 (2011).
31. Menzel, R. The honeybee as a model for understanding the basis of cognition. *Nat. Rev. Neurosci.* **13**, 758–768 (2012).
32. Riemensperger, T. *et al.* Behavioral consequences of dopamine deficiency in the *Drosophila* central nervous system. *Proc. Natl. Acad. Sci. USA* **108**, 834–839 (2011).
33. Van Swinderen, B. & Andretic, R. Dopamine in *Drosophila*: setting arousal thresholds in a miniature brain. *Proc. R. Soc. B.* **278**, 906–913 (2011).
34. Mizunami, M. & Matsumoto, Y. Roles of aminergic neurons in formation and recall of associative memory in crickets. *Frontiers Behav. Neurosci.* **4**, 172 (2010).
35. Mizunami, M., Hamanaka, Y. & Nishino, H. Toward elucidating diversity of neural mechanisms underlying insect learning. *Zool. Lett.* **1**, 8 (2015).
36. Yamagata, N. *et al.* Distinct dopamine neurons mediate reward signals for short- and long-term memories. *Proc. Natl. Acad. Sci. USA* **112**, 578–583 (2015).
37. Shinmyo, Y. *et al.* Brachyenteron is necessary for morphogenesis for the posterior gut but not for anteroposterior axial elongation from the posterior growth zone in the intermediate-germband cricket *Gryllus bimaculatus*. *Development* **133**, 4539–4547 (2006).
38. Takahashi, T. *et al.* Systemic RNA interference for the study of learning and memory in an insect. *J. Neurosci. Methods* **179**, 9–15 (2009).
39. Watanabe, T. *et al.* Non-transgenic genome modifications in a hemimetabolous insect using zinc-finger and TAL effector nucleases. *Nat. Commun.* **3**, 1017–1025 (2012).
40. Watanabe, T., Noji, S. & Mito, T. Gene knockout by targeted mutagenesis in a hemimetabolous insect, the two-spotted cricket *Gryllus bimaculatus*, using TALENs. *Methods* **69**, 17–21 (2014).
41. Matsumoto, M. & Hikosaka, O. Two types of dopamine neuron distinctly convey positive and negative motivational signals. *Nature* **459**, 837–841 (2009).
42. Fiorillo, C. D. Two dimensions of value: dopamine neurons represent reward but not aversiveness. *Science* **341**, 546–549 (2013).
43. Watanabe, T., Sadamoto, H. & Aonuma, H. Molecular basis of the dopaminergic system in the cricket *Gryllus bimaculatus*. *Invert. Neurosci.* **13**, 107–23 (2013).
44. Hwang, W. Y. *et al.* Efficient genome editing in zebrafish using a CRISPR-Cas system. *Nat. Biotechnol.* **31**, 227–229 (2013).
45. Matsumoto, Y. & Mizunami, M. Temporal determinants of long-term retention of olfactory memory in the cricket *Gryllus bimaculatus*. *J. Exp. Biol.* **205**, 1429–1437 (2002).
46. Matsumoto, Y., Unoki, S., Aonuma, H. & Mizunami, M. Critical roles of the nitric oxide-cGMP cascade in the formation of cAMP-dependent long-term memory. *Learn. Mem.* **13**, 35–44 (2006).

Acknowledgements

This study was supported by Grants-in-Aid for Scientific Research from the Ministry of Education, Science, Culture, Sports and Technology of Japan (No. 24370030, No. 24657049).

Author Contributions

Conceived and designed the experiments: T.M., S.N. and M.M. Performed the experiments: H.A. and T.W. Analyzed the data: H.A. and M.M. Wrote the manuscript: H.A., T.W., Y.M., T.M., S.N. and M.M.

Additional Information

Supplementary information accompanies this paper at <http://www.nature.com/srep>

Competing financial interests: The authors declare no competing financial interests.

How to cite this article: Awata, H. *et al.* Knockout crickets for the study of learning and memory: Dopamine receptor Dop1 mediates aversive but not appetitive reinforcement in crickets. *Sci. Rep.* **5**, 15885; doi: 10.1038/srep15885 (2015).



This work is licensed under a Creative Commons Attribution 4.0 International License. The images or other third party material in this article are included in the article's Creative Commons license, unless indicated otherwise in the credit line; if the material is not included under the Creative Commons license, users will need to obtain permission from the license holder to reproduce the material. To view a copy of this license, visit <http://creativecommons.org/licenses/by/4.0/>