

Augmentation of Creatine in the Heart

Sevasti Zervou^{1,4,#}, Hannah J. Whittington^{1,4,#}, Angela J. Russell^{2,3,4} and Craig A. Lygate^{1,4,*}

¹Division of Cardiovascular Medicine, Radcliffe Department of Medicine, University of Oxford, UK;

²Department of Chemistry, Chemistry Research Laboratory, University of Oxford, Oxford, UK;

³Department of Pharmacology, University of Oxford, Oxford, UK; ⁴BHF Centre of Research Excellence, Oxford, UK



C.A. Lygate

Abstract: Creatine is a principle component of the creatine kinase (CK) phosphagen system common to all vertebrates. It is found in excitable cells, such as cardiomyocytes, where it plays an important role in the buffering and transport of chemical energy to ensure that supply meets the dynamic demands of the heart. Multiple components of the CK system, including intracellular creatine levels, are reduced in heart failure, while ischaemia and hypoxia represent acute crises of energy provision. Elevation of myocardial creatine levels has therefore been suggested as potentially beneficial, however, achieving this goal is not trivial. This mini-review outlines the evidence in support of creatine elevation and critically examines the pharmacological approaches that are currently available. In particular, dietary creatine-supplementation does not sufficiently elevate creatine levels in the heart due to subsequent down-regulation of the plasma membrane creatine transporter (CrT). Attempts to increase passive diffusion and bypass the CrT, e.g. via creatine esters, have yet to be tested in the heart. However, studies in mice with genetic overexpression of the CrT demonstrate proof-of-principle that elevated creatine protects the heart from ischaemia-reperfusion injury. This suggests activation of the CrT as a major unmet pharmacological target. However, translation of this finding to the clinic will require a greater understanding of CrT regulation in health and disease and the development of small molecule activators.

Keywords: Creatine transporter, energetics, heart disease.

1. THE ROLE OF CREATINE IN THE HEART

Heart muscle cells (cardiomyocytes) have high and dynamic energy demands that require an exquisite balance between energy production and consumption. Chemical energy in the form of adenosine triphosphate (ATP) is produced from multiple substrates (e.g. fatty acids and glucose) predominantly in the mitochondria via oxidative phosphorylation. Ensuring that the energy within the phosphoryl bonds of ATP is maximised and readily available at the sites of utilisation requires a phosphagen system, which in all vertebrates, consists of the reversible interaction of creatine and ATP under the control of creatine kinase (CK) enzymes [1, 2]: $\text{Cr} + \text{ATP} \leftrightarrow \text{Phosphocreatine} + \text{ADP} + \text{H}^+$ (see Fig. 1). This is the only known metabolic role for creatine, which is taken up into the cardiomyocyte via a specific plasma membrane Creatine Transporter (CrT) [3].

The heart expresses four CK isoenzymes, the most abundant being mitochondrial CK (Mt-CK) and myofibrillar CK (MM-CK), at 10% and 88% of total CK activity in the human heart respectively [6]. The brain isoform (BB-CK)

and its dimerized product with M-CK, MB-CK also exists in the heart but at low abundance (~2%) [6]. With approximately two-thirds of the total Cr pool in the phosphorylated (PCr) form, the creatine kinase shuttle thereby acts as an energy buffer, which can provide near instantaneous regeneration of ATP at times of high workload when energy demand outstrips supply [5, 7]. This represents a short-term back-up that seamlessly steps in until ATP production is increased.

2. CREATINE IN HEART DISEASE & THE RATIONALE FOR AUGMENTATION

2.1. Heart Failure

In heart failure there is a gradual loss of myocardial total creatine content and a corresponding reduction in CK activity [1]. This is a remarkably consistent finding across animal models and aetiologies [8-12] and was first described in patients as long ago as 1939 [13], for example, a reduction of 50% in total creatine and 34% in total CK activity was observed in the failing human heart [6]. This creatine loss has been attributed to down-regulation of the creatine transporter (CrT) in the failing heart [14] as a consequence of post-transcriptional modification [9].

These findings come from post-mortem tissue, but ³¹P-magnetic resonance spectroscopy (MRS) has been used to study high-energy phosphates *in vivo*. Due to the technical difficulty in obtaining absolute values, the energetic state of

*Address correspondence to this author at the Division of Cardiovascular Medicine, Radcliffe Department of Medicine, University of Oxford, Wellcome Trust Centre for Human Genetics, Roosevelt Drive, Headington OX3 7BN, UK; Tel: ++44 1865 287603; Fax: ++44 1865 287664; E-mail: clygate@well.ox.ac.uk

#Authors contributed equally.

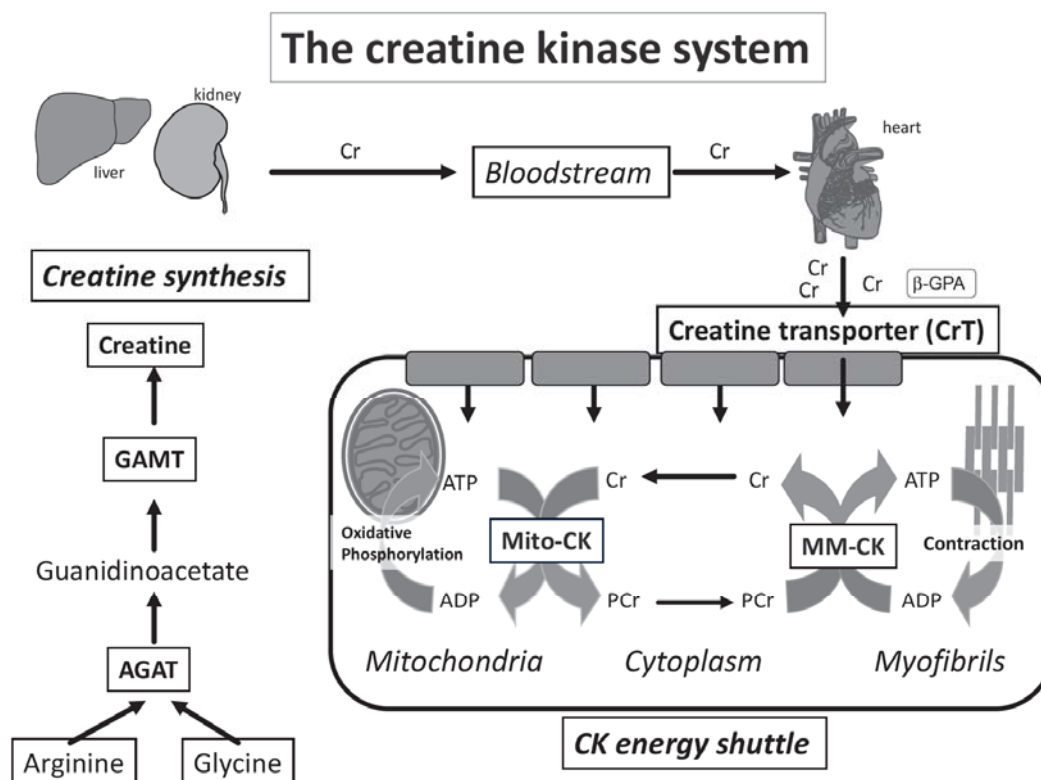


Fig. (1). Creatine biosynthesis and the CK energy shuttle: Creatine biosynthesis is a two-step process with L-arginine:glycine amidinotransferase (AGAT), mostly in the kidney, and N-guanidinoacetate methyltransferase (GAMT) predominantly in the liver. Creatine is taken-up into cardiomyocytes from the bloodstream by the plasma-membrane creatine transporter (CrT). Mitochondrial creatine kinase (Mt-CK) located in the mitochondrial inter-membrane space catalyses direct transfer of a high-energy phosphoryl group from ATP to creatine to form phosphocreatine (PCr). PCr is small and less polar than ATP and accumulates to high levels in the cytosol acting as a highly mobile, short-term, energy store. The reverse reaction generates ATP and is catalysed by the cytosolic CK dimers closely coupled to ATPases. The liberated creatine diffuses back to signal for further ATP production. Compartmentalisation of the reactants without the requirement for ADP and ATP diffusion ensure metabolites are at favourable levels to support forward and reverse reactions and maximise the free energy available from ATP hydrolysis, i.e. low [ATP/ADP] ratio at the mitochondria and high [ATP/ADP] at the ATPases [1, 2, 4, 5]. Created using Servier Medical Art by Servier which is licensed under a Creative Commons Attribution 3.0 Unported License <http://www.servier.com/slidekit>.

the heart is usually expressed as a ratio of PCr/ATP, with the normal value in healthy human heart ~ 2 [15]. Notably, ATP levels remain near normal until end-stage heart failure due to the buffering capacity of PCr, and the CK equilibrium constant strongly favouring ATP synthesis.

Studies in patients with dilated cardiomyopathy have demonstrated that a low PCr/ATP ratio is associated with more severe heart failure symptoms [15], low contractile function, myocardial structural remodelling [16], and a higher risk of mortality [17]. Impairment in PCr/ATP ratio has been described early in the disease process prior to overt cardiac dysfunction, e.g. in type 2 diabetics [18], obesity [19], hypertension [20], and in patients with cardiac hypertrophy [21]. These observational studies suggest a close association between cardiac energetic status and function, although whether reduced creatine levels have a causal role in driving dysfunction in the failing heart remains a matter of some debate [22]. Regardless, it has long been suggested that preventing the decline in total creatine levels may be of therapeutic benefit in heart failure [1, 23, 24].

2.2. Ischaemia

In the ischaemic heart there is a rapid energy crisis with insufficient oxygen to support ATP production via oxidative phosphorylation, PCr and ATP levels are rapidly depleted (within minutes), and the heart will cease beating. When ischaemia is transient (such as in angina) it seems reasonable to suggest that elevating energy stores in the form of PCr may be therapeutically beneficial, although this remains untested. However, even with prolonged ischaemia resulting in tissue damage (as in myocardial infarction), there may be benefits in terms of re-energising the heart during recovery. Certainly, the converse is true, that hearts from creatine-deficient mice have impaired functional recovery following an ischaemic period [25].

2.3. Anthracycline Cardiotoxicity

Anthracyclines such as doxorubicin are effective chemotherapy agents, but their use is severely limited by dose-dependent adverse effects on cardiac function [26].

These are, in part, thought to be mediated by the generation of reactive oxygen species and subsequent derangement in cardiac energetics [27]. Augmenting creatine levels has been mooted to address both these issues since numerous *in vitro* studies have ascribed antioxidant effects to creatine, either directly, or by boosting antioxidant defenses [28]. Indeed, a recent *in vitro* study showed that creatine protected against doxorubicin-induced apoptosis, cell damage and oxidative stress [29]. In contrast, we recently showed that intracellular Cr levels did not influence the functional response upon acute exposure to doxorubicin or hydrogen peroxide, questioning the physiological relevance of earlier observations to the intact beating heart [30]. However, the effect of creatine augmentation on chronic anthracycline toxicity has yet to be established.

3. DETERMINANTS OF CREATINE LEVELS IN CARDIOMYOCYTES

Creatine levels in the heart are tightly controlled and represent the balance between creatine availability, cellular uptake, and degradation / efflux.

3.1. Creatine Biosynthesis

A typical omnivorous Western diet provides one half of daily creatine with the other half synthesised *de novo*. Creatine synthesis is a two-step metabolic process requiring three amino acids; methionine, glycine and arginine and three enzymes [31]. The first enzyme L-arginine:glycine amidinotransferase (AGAT) transfers the amidino group from arginine to glycine to yield L-ornithine and guanidinoacetic acid (GAA). Methionine adenosyltransferase (MAT) converts methionine into S-adenosylmethionine (SAM). SAM acts as the methyl donor for GAA at the original glycine nitrogen and by action of the third enzyme N-guanidinoacetate methyltransferase (GAMT) yields creatine and S-adenosylhomocysteine (SAH) [2, 31]. Creatine biosynthesis is an inter-organ process as shown in (Fig. 1). Local creatine biosynthesis is not thought to occur within cardiomyocytes, since they do not normally express AGAT or GAMT proteins, confirmed in CrT knockout mice which have low or negligible creatine levels in the heart [32, 33]. Notably, AGAT mRNA may be expressed in the heart under pathological conditions [34], however, the significance of this is open to debate without concomitant expression of GAMT.

3.2. Cellular Creatine Uptake: Creatine Transporter

The CrT (SLC6A8) is the only known mechanism for creatine uptake across the plasma membrane and is expressed in energy-demanding tissues such as skeletal muscle, heart, kidney and brain [2]. Creatine uptake (against a 50-fold concentration gradient) is powered by the transmembrane Na⁺ gradient with co-transport of two Na⁺ and one Cl⁻ for each molecule of creatine [35]. The CrT gene is located on the human X chromosome and encodes for a 635 amino acid, 12 transmembrane domain, protein with several putative phosphorylation and glycosylation sites [36]. It has high specificity for creatine, and is closely related to the γ -aminobutyrate (GABA), taurine and betaine transporters.

The crystal structure of the CrT and the creatine-binding sites have yet to be solved, with the closest relative being the bacterial leucine transporter leuT [37].

Several molecular weights have been reported when using tissue samples (as opposed to *in vitro*), e.g. 58 kDa (native species), 70-80 kDa (a diffuse band due to extensive glycosylation) and 150 kDa (probably a dimer). In part, this is due to inherent problems with the efficient purification of membrane-bound molecules and to the lack of truly specific CrT antibodies [38].

3.3. Cellular Creatine Efflux

The major source of creatine loss is spontaneous, non-enzymatic, degradation to creatinine, which is lost from the cell by diffusion in parallel with low levels of passive creatine efflux [2, 39]. The rate of loss is 1.7% of the total body creatine pool per day and replacement represents a significant metabolic demand [31].

4. STRATEGIES TO ELEVATE MYOCARDIAL CREATINE LEVELS

4.1. Creatine Supplementation

A large body of research has focussed on creatine-supplementation strategies, which usually requires oral dosing with very large quantities (e.g. up to 25g per day in humans). Multiple forms of creatine are available for the public to purchase in the guise of nutraceutical preparations including anhydrous creatine and salt formulations, e.g. pyruvate, phosphate, malate, citrate, magnesium and orotate [40]. This approach is well established within body building and exercise communities, with putative benefits as an ergogenic aid to enhance performance in sport [40]. Claims have also been made for benefits in diseases such as Huntington's, Parkinson's, Duchenne muscular dystrophy and other neuromuscular disorders [41], although the quality of evidence is highly variable. In this section, we will focus solely on the effects that exogenous creatine has on the cardiovascular system.

A key consideration is how much creatine actually makes it into the target organ. Not all tissues load creatine to the same extent and the reasons for the variation are unclear [42]. Nonetheless, it is generally accepted that tissues with high starting [Cr] (e.g. heart) have less loading potential than tissues with low [Cr] e.g. liver [42, 43]. For example, rats fed a creatine-supplemented diet had 7-fold higher creatine levels in plasma, but creatine in the heart was not significantly elevated [39]. This is most likely due to substrate inhibition, with high creatine resulting in down-regulation of CrT activity, for example, 6 weeks of Cr supplementation in rats led to suppressed Cr transport V_{max} and a subsequent decrease in plasma membrane CrT pool [39]. Studies that fail to measure tissue creatine levels are therefore highly questionable and of little value.

4.1.1. Acute Ischaemia

Hearts excised and perfused in Langendorff mode from rats supplemented with 1% creatine in chow did not alter

functional recovery or improve the half-life of ATP during global ischaemia above that of the control group [44]. However, perfusion with PCr at the time of ischaemia or during reperfusion has met with greater success. For example, continuous intravenous administration of PCr before and during coronary artery ligation in rabbits caused a 40% reduction in necrosis [45]. Furthermore, *ex vivo* rat hearts subjected to ischaemia-reperfusion injury had almost complete recovery of heart function when PCr was included in the perfusion buffer [46]. Cardioplegic solutions supplemented with PCr improved the ability of the heart to perform work following cardiopulmonary bypass in pigs [47], and improved myocardial protection in rat hearts [48]. This apparently translates to humans since significant myocardial protection was reported in patients undergoing coronary artery bypass surgery that received PCr before, during, and after cardioplegic bypass surgery [49]. Furthermore, PCr treated patients had a reduced incidence of both ventricular fibrillation (VF) and ventricular tachycardia (VT) post MI [50]. However, it should be noted that PCr is not a substrate for CrT and so this beneficial effect is unlikely to be due to elevated intracellular levels, instead it has been suggested that PCr promotes plasma membrane stabilization [51].

4.1.2. Heart Failure

Chronic creatine supplementation in rats with heart failure secondary to myocardial infarction did not increase PCr or total [Cr] or improve myocardial energy reserve via CK [42]. Unsurprisingly there was no effect on cardiac function and the decrease in total [Cr] that occurs in the failing heart was not prevented [52]. Supplementation with Cr (20g daily for 10days) in patients with chronic heart failure failed to improve ejection fraction at rest or during exercise; however skeletal muscle strength and performance were improved compared to the placebo group [53]. In line with this study, Cr supplementation also improved skeletal muscle metabolism in congestive heart failure patients [54].

4.1.3. Exercise

The majority of information on the efficacy of Cr supplementation in sport and exercise performance is focused on the beneficial effects in skeletal muscle (reviewed elsewhere in this issue), but little is known about the myocardium. A recent study evaluated the effect of Cr supplementation in swim trained rats, they found no change in basal cardiac function or mitochondrial oxidative capacity and, surprisingly, a decreased tolerance to ischaemia in the exercise-trained Cr supplemented rats [55]. In humans, creatine supplementation for 4 weeks during high intensity interval training improved ventilatory threshold but had no additional benefits on the cardiorespiratory outcomes [56]. Furthermore, short term Cr supplementation improved submaximal cycling efficiency with no detectable negative effect on cardiac structure or function [57].

4.1.4. Hypoxia

Supplementation with creatine in the maternal diet during pregnancy in the Spiny mouse significantly increased total

Cr in the placenta and in the foetal vital organs. This enhanced offspring survival, protecting them from the damaging effects of foetal hypoxia during birth [58]. This study suggests that Cr supplementation may have utility in difficult pregnancies, an area yet to be investigated clinically.

4.1.5. Aging

Median healthy life span was prolonged by 9% in mice given creatine in the diet from 1 year of age [59]. Tissue creatine levels were not measured and the extent to which this reflects an improvement in cardiac health is unknown.

4.2. Creatine Analogues and Creatine Loading Strategies

4.2.1. Creatine Methyl Ester and Creatine Metal Complexes

One approach to circumvent the problem of CrT down-regulation is to make chemical modifications to mask the polar or charged functional groups and make creatine more lipophilic, thereby enhancing passive diffusion across the plasma membrane. Ideally the complex will only be cleaved within the intracellular environment to release free creatine and a non-toxic by-product. Examples are the creatine benzyl ester (CrOBzl) or phosphocreatine-Mg(II)-complex acetate (PCr-Mg-CPLX) [60]. Towards the same purpose, later studies analysed amide creatine derivatives such as creatine-glycine ethyl ester, creatine ethylamide in addition to alanine or threonine methyl esters [61] (see Fig. 2 for chemical structures). Of these, the glycine ethyl ester and creatine ethylamide were able to raise PCr levels in brain tissue slices, which is a critical validation step to demonstrate efficacy. This approach is of particular interest for the treatment of patients with creatine-deficiency due to a loss-of-function mutation in the CrT [61]. Whether this approach is capable of loading additional creatine into the heart remains to be established.

4.2.2. Cyclocreatine (cCr)

Cyclocreatine (cCr) – is an analogue of creatine, which is taken up into cells via the CrT and is a substrate for creatine kinase, but with a significantly lower reaction velocity. This is an unfavourable property during times of maximal energy demand (and therefore represents a trade-off), but in the ischaemic heart it protects against tissue damage by delaying the rate of ATP depletion [62]. Several studies have shown cardioprotection by pre-dosing cCr in animal models [44, 63, 64], for example, I.V. injection of cCr 1 hour before surgery improved post by-pass contractility and cardiac output in a canine model of cold cardioplegic arrest and aortic cross-clamping [65].

4.2.3. β -guanidinopropionic Acid (β -GPA)

β -guanidinopropionic acid (β -GPA) – is a competitive inhibitor of cellular creatine uptake, but is a poor substrate for the CK reaction (~1% of the reaction velocity for creatine). It is therefore a useful pharmacological tool for understanding the effects of creatine depletion [66].

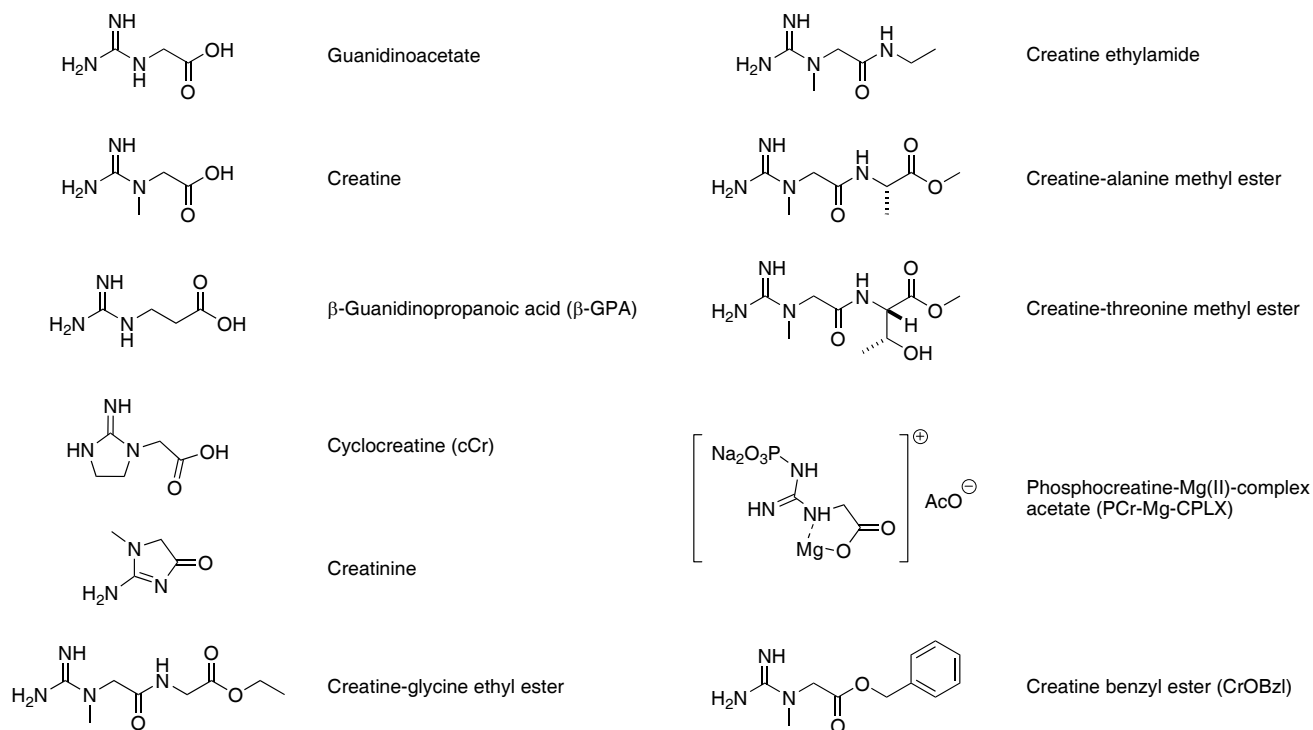


Fig. (2). Structures of precursor GAA, Creatine, β -GPA, creatinine and Cr analogues.

4.3. Increasing Creatine Transporter Activity

Increasing the activity or expression of the CrT is an attractive strategy for elevating creatine in the heart. In the absence of pharmacological tools, proof-of-principle has relied on transgenic mice. Our laboratory previously created a mouse model constitutively overexpressing CrT specifically in the heart (CrT-OE Oxford) [23]. This resulted in variable levels of total creatine up to 4-fold higher than in wild-type hearts and elevated PCr (Fig. 3). Surprisingly, mice with very high creatine levels (>2-fold elevation) developed cardiac hypertrophy and contractile dysfunction. This was linked to a reduced ratio of PCr/Cr indicating a limit in the capacity of CK to keep the additional creatine pool phosphorylated, with the consequence that less free energy was available from ATP hydrolysis [23]. These mice were also shown to have impaired glycolytic capacity as a result of reduced enolase expression [67]. Recently, a second mouse model of CrT overexpression (CrT-OE Duke) has been described with normal cardiac function and only mild hypertrophy despite creatine levels up to 5.7-fold higher than controls [68]. Notably, PCr levels are elevated at 2 and 4 weeks, but return to normal by 8 weeks of age while creatine levels continue to increase throughout. Furthermore, only 4% of cardiomyocytes appear to express the transgene. Several factors may contribute to these differences, for example, the Oxford mouse over-expresses rabbit CrT using an MLC2v promoter on a C57BL/6J background [23]; whereas the Duke mouse is human CrT using α MHC promoter on an FVB background [68].

We have subsequently shown that creatine levels elevated up to 2-fold do not have adverse cardiac effects in the CrT-OE Oxford mouse [69] and therefore conducted a

series of experiments using mice within this “therapeutic” range. CrT-OE mice were found to be protected against ischaemia/reperfusion injury, exhibiting 27% less myocardial damage compared to control hearts, with the extent of damage negatively correlating with tissue creatine levels. This manifested as improved functional recovery in *ex vivo* perfused heart experiments. In addition to positive effects on cardiac energetics, *in vitro* experiments suggested that creatine could also delay mitochondrial commitment to cell death [69].

These mice were also tested in a chronic model of post-MI heart failure and although creatine levels were maintained at supra-physiological levels throughout, there was no benefit in terms of cardiac remodelling and function [69]. Notably, this finding was predicted by an *in silico* modelling study, which suggested energetic benefits only if pools of creatine, exchangeable phosphates and adenine nucleotides could be elevated simultaneously [70]. It is notable that mice over-expressing M-CK were protected against pressure overload induced heart failure [24] and activation of CK represents another related therapeutic target. It remains to be seen whether a combined substrate plus enzyme approach would be synergistic. The potential for creatine augmentation in heart failure, on its own or in combination with other approaches, requires further study.

5. THE CREATINE TRANSPORTER AS A PHARMACOLOGICAL TARGET

Studies in CrT overexpressing mice have provided the first proof-of-principle evidence that augmenting creatine levels in the heart can be cardioprotective. However, realizing the translational potential will require the

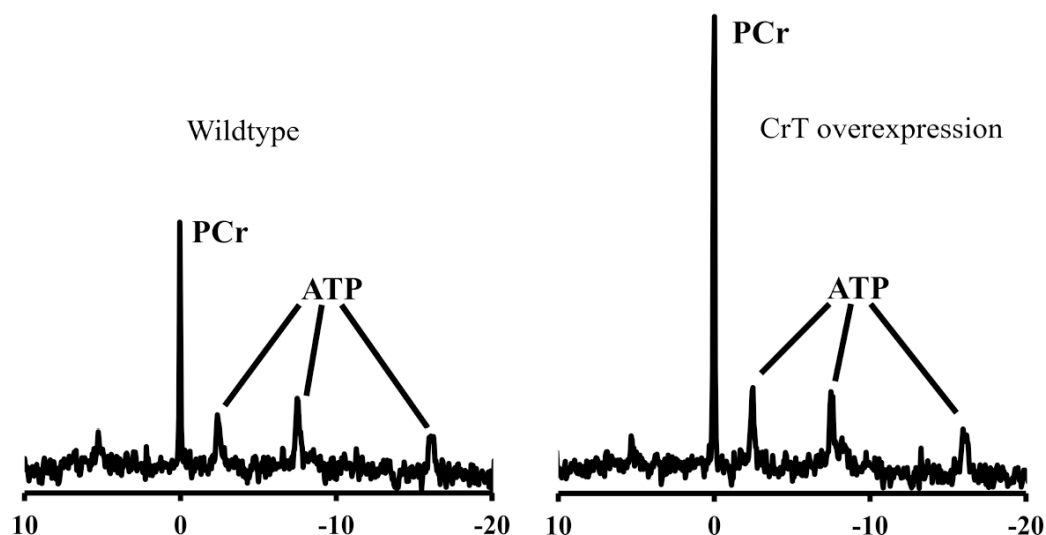


Fig. (3). ^{31}P -NMR spectra from *ex vivo* Langendorff perfused mouse heart. The left panel is from a wild-type mouse showing a large phosphocreatine (PCr) peak and the three phosphoryl groups of ATP. On the right is a spectrum from a creatine transporter over-expressing mouse (Oxford) heart showing greatly increased PCr peak.

development of new pharmacological tools and a much better understanding of CrT regulation in health and disease.

5.1. What is Known About CrT Regulation?

Modulating the CrT and thereby intracellular Cr levels, has been explored in both heart-derived cells and artificial expression systems. Substrate inhibition by creatine itself is the single undisputed, strong regulator of CrT [39, 71, 72] other evidence pertains mostly to signalling molecules that have either direct or indirect effects on CrT function. Most of these reports are not specific to the myocardium, but may provide possible targets for future CrT modulation. However, care should be taken when generalizing between cells types, for example, skeletal and heart muscle cells share the same CrT, yet creatine levels are much higher in skeletal muscle, suggesting differential regulation.

A summary of potential routes of CrT modulation is shown in Table 1. Notably, there is a stronger influence of post-transcriptional and post-translational regulation compared to transcriptional mechanisms. For example, in hearts from creatine-deficient mice the V_{\max} for creatine uptake kinetics is elevated 7 fold, yet CrT transcript is only increased by 1.4-fold [72].

It was previously shown that negative feedback regulation by creatine is dependent on de novo protein synthesis, but the identity of this endogenous CrT inhibitor was unknown [73]. Our group used an unbiased global gene array approach to identify Thioredoxin interacting protein (Txnip) as the only gene up-regulated when cells were exposed to saturating creatine levels. Under the same conditions, small interfering RNA against Txnip resulted in increased creatine uptake. This mechanism appears to be relevant *in vivo* since hearts from CrT overexpressing mice with high intracellular creatine had higher Txnip mRNA and protein compared to wild-type littermates. Conversely

creatine-deficient mouse hearts had lower Txnip expression [74]. This evidence is consistent with the role of Txnip as an inhibitor of creatine uptake both *in vitro* and *in vivo*. Txnip is an α arrestin with roles in redox regulation via inhibition of the denitrosylating enzyme, thioredoxin. This suggests the potential for regulation of CrT via S-nitrosylation, but further work is required to elucidate the mechanisms of the Txnip-CrT interaction as a potential target for augmenting myocardial creatine levels.

5.2. Screening for Activators of the Creatine Transporter

Current methods for quantifying CrT activity rely on uptake of radio-labelled creatine and are inherently low-throughput [74, 88]. Nevertheless our laboratories have had some limited success in identifying *in vitro* activators of creatine uptake by using a ligand-based virtual screening method to cherry pick compounds from our in-house 25,000-member screening collection. These types of *in silico* screening approaches are increasingly employed within discovery programmes, particularly where the structure of the biological target is unknown, or no reliable models are available, and can yield improved hit rates compared to a screen of a randomly diverse compound collection (For a review see: [89, 90]). We use a mouse fibroblast cell line that stably overexpresses the CrT and incubate candidate compounds in 24-well plates spiked with ^{14}C -creatine. After 1 hour, cells are lysed, washed and creatine-uptake calculated by quantification of radiation with comparison to a standard curve. Positive results are then repeated looking for dose-dependency in the more physiologically relevant, cardiomyocyte-derived, HL1 cell line [69]. As a secondary screen, compounds are excluded if they alter membrane potential, since effects on CrT activity may simply reflect changes in the sodium gradient. This can be assessed using cationic dyes such as DiSBAC₂(3) [Bis-(1,3-diethylthiobarbituric acid) trimethine oxonol] [91].

Table 1. Mechanisms of Creatine transporter modulation.

Molecule/condition	Aspect of CrT modulation	Effect	System	References
Extracellular [Creatine]	Cr uptake	Decrease	L6 myoblasts	[73]
Beta-GPA	Activity	Decrease	HL1 cells	[75]
mTOR and SGK1	CrT trafficking	Increase	<i>Xenopus laevis</i> oocytes expressing CrT cRNA	[76, 77]
Klotho	Max transport rate and transporter on the plasma membrane	Decrease		[78]
SPAK and OSR1				[79]
PGC1 α via ERR α	Transcript	Increase	Skeletal muscle cells	[80]
Splice variants SLC6A8C and SLC6A8D	Cr uptake and CrT protein	Increase	3T3 Swiss fibroblasts	[81]
Growth hormone	Transcript	Increase	In vivo in rats post-MI	[82]
AICAR via AMPK and substrate availability	V _{max} of Cr uptake and CrT on the plasma membrane	Increase in V _{max}	HL1 cardiomyocytes and RNCM	[83]
		Decrease	Kidney proximal tubule cells	[84]
Phorbol esters	CrT activity	Decrease	<i>X. laevis</i> oocytes expressing CrT	[35]
Txnip	Cr uptake CrT protein	Decrease	Mouse fibroblasts overexpressing CrT	[74]
Doxorubicin	Cr uptake and CrT on the plasma membrane	Decrease and removal of CrT from plasma membrane	Rat neonatal cardiomyocytes and HL1 cells	[75]
N-glycosylation at Asn ¹⁹² and Asn ¹⁹⁷	CrT function Surface CrT trafficking	Preserves function	HEK293 cells overexpressing CrT	[85]
Phosphorylation at Ser ⁶²⁵ Cr supplementation	Cr uptake Phosphorylation at Tyr ⁴¹⁶	Increase	Gastrocnemius rat muscle in starvation	[86, 87]
		Decrease	Gastrocnemius rat muscle in sepsis	

Substrate availability is a strong regulator of Cr uptake. β -GPA competes with Cr for uptake by the CrT and decreases Cr entry into the cell. A number of reports describe CrT modulation in *X. laevis* oocytes that overexpress CrT. There is a role for intracellular kinases such as mammalian target of rapamycin (mTOR), Serum and glucocorticoid-regulated kinase 1 (SGK1), SPS-1 related proline/alanine-rich kinase (SPAK), oxidative stress-responsive kinase 1 (OSR1) and the transmembrane Klotho protein that can also regulate several other transporters. AICAR, via 5' AMP-activated protein kinase (AMPK) and phorbol esters that activate Protein kinase C can both change CrT activity. Although the above in addition to Doxorubicin and Txnip affect CrT translocation from plasma membrane and/or activity, CrT regulation via its transcript is less likely but possible, via peroxisome proliferator-activated receptor-gamma coactivator (PGC)-1 α (PGC1 α) acting through the Estrogen-related receptor response element (ERRE) in intron 1 of the CrT gene sequence. Post-translational modifications of CrT, such as phosphorylation and N-glycosylation have also been studied both *in vitro* and *in vivo*.

Alternatively, transcriptional regulation of CrT can be explored, e.g. using luciferase reporter assays. Evidence for the potential of this approach is demonstrated by the identification of PGC1 α -driven modulation of CrT transcript [80]. Using reporter assays, it will be possible to interrogate the ability of different compounds, to alter expression of the CrT promoter [92].

6. SUMMARY AND CONCLUSIONS

There exists a strong rationale for attempting to augment creatine levels in the heart. However, dietary creatine supplementation is not sufficient to achieve this due to down-regulation of the creatine transporter. Mice genetically-modified to overexpress the CrT have provided proof-of-principle evidence that elevated creatine protects the heart against ischaemia/reperfusion injury and has

defined a safe working range for elevated creatine. Realising the translational potential of these findings and extending the range of potential indications will require the development of new pharmacological tools aimed at increasing CrT activity. Clearly such agents are also likely to find utility beyond the cardiovascular system.

CONFLICT OF INTEREST

The author(s) confirm that this article content has no conflict of interest.

ACKNOWLEDGEMENTS

Work in our laboratory is supported by the British Heart Foundation programme grant RG/13/8/30266. Funding specifically related to the screening experiments has been

received from the Oxford Invention Fund (OIF 507) and the BHF Centre of Research Excellence, Oxford.

REFERENCES

- [1] Neubauer S. The failing heart--an engine out of fuel. *N Engl. J. Med.*, **2007**, *356*(11), 1140-1151.
- [2] Wyss M.; Kaddurah-Daouk R. Creatine and creatinine metabolism. *Physiol. Rev.*, **2000**, *80*(3), 1107-1213.
- [3] Snow R.J.; Murphy R.M. Creatine and the creatine transporter: a review. *Mol. Cell Biochem.*, **2001**, *224*(1-2), 169-181.
- [4] Ventura-Clapier R.; Garnier A.; Veksler V. Energy metabolism in heart failure. *J. Physiol.*, **2004**, *555*(Pt 1), 1-13.
- [5] Wallimann T.; Wyss M.; Brdiczka D.; Nicolay K.; Eppenberger H.M. Intracellular compartmentation, structure and function of creatine kinase isoenzymes in tissues with high and fluctuating energy demands: the 'phosphocreatine circuit' for cellular energy homeostasis. *Biochem. J.*, **1992**, *281* (Pt 1)21-40.
- [6] Nascimben L.; Ingwall J.S.; Pauletto P.; Friedrich J.; Gwathmey J.K.; Saks V.; Pessina A.C.; Allen P.D. Creatine kinase system in failing and nonfailing human myocardium. *Circulation*, **1996**, *94*(8), 1894-1901.
- [7] Bessman S.P.; Geiger P.J. Transport of energy in muscle: the phosphorylcreatine shuttle. *Science*, **1981**, *211*(4481), 448-452.
- [8] Ye Y.; Gong G.; Ochiai K.; Liu J.; Zhang J. High-energy phosphate metabolism and creatine kinase in failing hearts: a new porcine model. *Circulation*, **2001**, *103*(11), 1570-1576.
- [9] Shen W.; Spindler M.; Higgins M.A.; Jin N.; Gill R.M.; Bloem L.J.; Ryan T.P.; Ingwall J.S. The fall in creatine levels and creatine kinase isozyme changes in the failing heart are reversible: complex post-transcriptional regulation of the components of the CK system. *J. Mol. Cell Cardiol.*, **2005**, *39*(3), 537-544.
- [10] Neubauer S.; Frank M.; Hu K.; Remkes H.; Laser A.; Horn M.; Ertl G.; Lohse M.J. Changes of creatine kinase gene expression in rat heart post-myocardial infarction. *J. Mol. Cell Cardiol.*, **1998**, *30*(4), 803-810.
- [11] Lygate C.A.; Fischer A.; Sebag-Montefiore L.; Wallis J.; ten Hove M.; Neubauer S. The creatine kinase energy transport system in the failing mouse heart. *J. Mol. Cell Cardiol.*, **2007**, *42*(6), 1129-1136.
- [12] Liao R.; Nascimben L.; Friedrich J.; Gwathmey J.K.; Ingwall J.S. Decreased energy reserve in an animal model of dilated cardiomyopathy. Relationship to contractile performance. *Circ. Res.*, **1996**, *78*(5), 893-902.
- [13] Herrman G.D.; Decherd G.M. The chemical nature of heart failure. *Ann. Intl. Med.*, **1939**, *12*(8), 1233-1244.
- [14] Neubauer S.; Remkes H.; Spindler M.; Horn M.; Wiesmann F.; Prestle J.; Walzel B.; Ertl G.; Hasenfuss G.; Wallimann T. Downregulation of the Na(+)-creatine cotransporter in failing human myocardium and in experimental heart failure. *Circulation*, **1999**, *100*(18), 1847-1850.
- [15] Neubauer S.; Krahe T.; Schindler R.; Horn M.; Hillenbrand H.; Entzeroth C.; Mader H.; Kromer E.P.; Rieggler G.A.; Lackner K.; et al. 31P magnetic resonance spectroscopy in dilated cardiomyopathy and coronary artery disease. Altered cardiac high-energy phosphate metabolism in heart failure. *Circulation*, **1992**, *86*(6), 1810-1818.
- [16] Neubauer S.; Horn M.; Pabst T.; Godde M.; Lubke D.; Jilling B.; Hahn D.; Ertl G. Contributions of 31P-magnetic resonance spectroscopy to the understanding of dilated heart muscle disease. *Eur. Heart J.*, **1995**, *16* Suppl O115-118.
- [17] Neubauer S.; Horn M.; Cramer M.; Harre K.; Newell J.B.; Peters W.; Pabst T.; Ertl G.; Hahn D.; Ingwall J.S.; Kochsiek K. Myocardial phosphocreatine-to-ATP ratio is a predictor of mortality in patients with dilated cardiomyopathy. *Circulation*, **1997**, *96*(7), 2190-2196.
- [18] Scheuermann-Freestone M.; Madsen P.L.; Manners D.; Blamire A.M.; Buckingham R.E.; Styles P.; Radda G.K.; Neubauer S.; Clarke K. Abnormal cardiac and skeletal muscle energy metabolism in patients with type 2 diabetes. *Circulation*, **2003**, *107*(24), 3040-3046.
- [19] Rider O.J.; Francis J.M.; Ali M.K.; Holloway C.; Pegg T.; Robson M.D.; Tyler D.; Byrne J.; Clarke K.; Neubauer S. Effects of catecholamine stress on diastolic function and myocardial energetics in obesity. *Circulation*, **2012**, *125*(12), 1511-1519.
- [20] Lamb H.J.; Beyerbach H.P.; van der Laarse A.; Stoel B.C.; Doornbos J.; van der Wall E.E.; de Roos A. Diastolic dysfunction in hypertensive heart disease is associated with altered myocardial metabolism. *Circulation*, **1999**, *99*(17), 2261-2267.
- [21] Smith C.S.; Bottomley P.A.; Schulman S.P.; Gerstenblith G.; Weiss R.G. Altered creatine kinase adenosine triphosphate kinetics in failing hypertrophied human myocardium. *Circulation*, **2006**, *114*(11), 1151-1158.
- [22] Lygate C.A.; Aksentijevic D.; Dawson D.; ten Hove M.; Phillips D.; de Bono J.P.; Medway D.J.; Sebag-Montefiore L.; Hunyor I.; Channon K.M.; Clarke K.; Zervou S.; Watkins H.; Balaban R.S.; Neubauer S. Living without creatine: unchanged exercise capacity and response to chronic myocardial infarction in creatine-deficient mice. *Circ. Res.*, **2013**, *112*(6), 945-955.
- [23] Wallis J.; Lygate C.A.; Fischer A.; ten Hove M.; Schneider J.E.; Sebag-Montefiore L.; Dawson D.; Hulbert K.; Zhang W.; Zhang M.H.; Watkins H.; Clarke K.; Neubauer S. Supranormal myocardial creatine and phosphocreatine concentrations lead to cardiac hypertrophy and heart failure: insights from creatine transporter-overexpressing transgenic mice. *Circulation*, **2005**, *112*(20), 3131-3139.
- [24] Gupta A.; Akki A.; Wang Y.; Leppo M.K.; Chacko V.P.; Foster D.B.; Caceres V.; Shi S.; Kirk J.A.; Su J.; Lai S.; Paolucci N.; Steenbergen C.; Gerstenblith G.; Weiss R.G. Creatine kinase-mediated improvement of function in failing mouse hearts provides causal evidence the failing heart is energy starved. *J. Clin. Invest.*, **2012**, *122*(1), 291-302.
- [25] ten Hove M.; Lygate C.A.; Fischer A.; Schneider J.E.; Sang A.E.; Hulbert K.; Sebag-Montefiore L.; Watkins H.; Clarke K.; Isbrandt D.; Wallis J.; Neubauer S. Reduced inotropic reserve and increased susceptibility to cardiac ischemia/reperfusion injury in phosphocreatine-deficient guanidinoacetate-N-methyltransferase-knockout mice. *Circulation*, **2005**, *111*(19), 2477-2485.
- [26] Swain S.M.; Whaley F.S.; Ewer M.S. Congestive heart failure in patients treated with doxorubicin: a retrospective analysis of three trials. *Cancer*, **2003**, *97*(11), 2869-2879.
- [27] Tokarska-Schlattner M.; Zaugg M.; Zuppinger C.; Wallimann T.; Schlattner U. New insights into doxorubicin-induced cardiotoxicity: the critical role of cellular energetics. *J. Mol. Cell Cardiol.*, **2006**, *41*(3), 389-405.
- [28] Sestili P.; Martinelli C.; Colombo E.; Barbieri E.; Potenza L.; Sartini S.; Fimognari C. Creatine as an antioxidant. *Amino Acids*, **2011**, *40*(5), 1385-1396.
- [29] Santacruz L.; Darrabie M.D.; Mantilla J.G.; Mishra R.; Feger B.J.; Jacobs D.O. Creatine Supplementation Reduces Doxorubicin-Induced Cardiomyocellular Injury. *Cardiovasc. Toxicol.*, **2014**.
- [30] Aksentijevic D.; Zervou S.; Faller K.M.; McAndrew D.J.; Schneider J.E.; Neubauer S.; Lygate C.A. Myocardial creatine levels do not influence response to acute oxidative stress in isolated perfused heart. *PLoS ONE*, **2014**, *9*(10), e109021.
- [31] Brosnan J.T.; da Silva R.P.; Brosnan M.E. The metabolic burden of creatine synthesis. *Amino Acids*, **2011**, *40*(5), 1325-1331.
- [32] Baroncelli L.; Alessandri M.G.; Tola J.; Putignano E.; Migliore M.; Amendola E.; Gross C.; Leuzzi V.; Cioni G.; Pizzorusso T. A novel mouse model of creatine transporter deficiency. *F1000Res.*, **2014**, *3*, 3228.
- [33] Skelton M.R.; Schaefer T.L.; Graham D.L.; Degrauw T.J.; Clark J.F.; Williams M.T.; Vorhees C.V. Creatine Transporter (CrT; Slc6a8) Knockout Mice as a Model of Human CrT Deficiency. *PLoS One*, **2011**, *6*(1), e16187.
- [34] Cullen M.E.; Yuen A.H.; Felkin L.E.; Smolenski R.T.; Hall J.L.; Grindle S.; Miller L.W.; Birks E.J.; Yacoub M.H.; Barton P.J. Myocardial expression of the arginine:glycine amidinotransferase gene is elevated in heart failure and normalized after recovery: potential implications for local creatine synthesis. *Circulation*, **2006**, *114*(1 Suppl), 116-20.
- [35] Dai W.; Vinnakota S.; Qian X.; Kunze D.L.; Sarkar H.K. Molecular characterization of the human CRT-1 creatine transporter expressed in *Xenopus* oocytes. *Arch. Biochem. Biophys.*, **1999**, *361*(1), 75-84.
- [36] Snow R.J.; Murphy, R. M. Creatine and the creatine transporter: a review. *Mol. Cell Biochem.*, **2001**, *224*(1-2), 169-181.
- [37] Kristensen A.S.A., Jørgensen TN, Sørensen L, Eriksen J, Loland CJ, Strömgaard K. Gether U. SLC6 neurotransmitter transporters:

- structure, function, and regulation. *Pharmacol. Rev.*, **2011**, *63*(3), 585-640.
- [38] Speer O.; Neukomm L.J.; Murphy R.M.; Zanolta E.; Schlattner U.; Henry H.; Snow R.J.; Wallimann T. Creatine transporters: a reappraisal. *Mol. Cell Biochem.*, **2004**, *256-257*(1-2), 407-424.
- [39] Boehm E.; Chan S.; Monfared M.; Wallimann T.; Clarke K.; Neubauer S. Creatine transporter activity and content in the rat heart supplemented by and depleted of creatine. *Am. J. Physiol. Endocrinol. Metab.*, **2003**, *284*(2), E399-406.
- [40] Cooper R.; Naclerio F.; Allgrove J.; Jimenez A. Creatine supplementation with specific view to exercise/sports performance: an update. *J. Int. Soc. Sports Nutr.*, **2012**, *9*(1), 33.
- [41] Persky A.M.; Brazeau G.A. Clinical pharmacology of the dietary supplement creatine monohydrate. *Pharmacol. Rev.*, **2001**, *53*(2), 161-176.
- [42] Horn M.; Frantz S.; Remkes H.; Laser A.; Urban B.; Mettenleiter A.; Schnackerz K.; Neubauer S. Effects of chronic dietary creatine feeding on cardiac energy metabolism and on creatine content in heart, skeletal muscle, brain, liver and kidney. *J. Mol. Cell Cardiol.*, **1998**, *30*(2), 277-284.
- [43] Ipsiroglu O.S.; Stromberger C.; Ilas J.; Hoger H.; Muhl A.; Stockler-Ipsiroglu S. Changes of tissue creatine concentrations upon oral supplementation of creatine-mono-hydrate in various animal species. *Life Sci.*, **2001**, *69*(15), 1805-1815.
- [44] Osbakken M.; Ito K.; Zhang D.; Ponomarenko I.; Ivanics T.; Jahngen E.G.; Cohn M. Creatine and cyclocreatine effects on ischemic myocardium: 31P nuclear magnetic resonance evaluation of intact heart. *Cardiology*, **1992**, *80*(3-4), 184-195.
- [45] Sharov V.G.; Afonskaya N.I.; Ruda M.Y.; Cherpachenko N.M.; Pozin E.; Markosyan R.A.; Shepeleva, I.; Samarenko M.B.; Saks V.A. Protection of ischemic myocardium by exogenous phosphocreatine (neoton): pharmacokinetics of phosphocreatine, reduction of infarct size, stabilization of sarcolemma of ischemic cardiomyocytes, and antithrombotic action. *Biochem. Med. Metab. Biol.*, **1986**, *35*(1), 101-114.
- [46] Sharov V.G.; Saks V.A.; Kupriyanov V.V.; Lakomkin V.L.; Kapelko V.I.; Steinschneider A.; Javadov S.A. Protection of ischemic myocardium by exogenous phosphocreatine. I. Morphologic and phosphorus 31-nuclear magnetic resonance studies. *J. Thorac. Cardiovasc. Surg.*, **1987**, *94*(5), 749-761.
- [47] Thelin S.; Hultman J.; Ronquist G.; Juhlin C.; Hansson H.E.; Lindgren P.G. Improved myocardial protection by creatine phosphate in cardioplegic solution. An in vivo study in the pig during normothermic ischemia. *Thorac. Cardiovasc. Surg.*, **1987**, *35*(3), 137-142.
- [48] Robinson L.A.; Braimbridge M.V.; Hearse D.J. Enhanced myocardial protection with high-energy phosphates in St. Thomas' Hospital cardioplegic solution. Synergism of adenosine triphosphate and creatine phosphate. *J. Thorac. Cardiovasc. Surg.*, **1987**, *93*(3), 415-427.
- [49] Cisowski M.; Bochenek A.; Kucewicz E.; Wnuk-Wojnar A.M.; Morawski W.; Skalski J.; Grzybek H. The use of exogenous creatine phosphate for myocardial protection in patients undergoing coronary artery bypass surgery. *J. Cardiovasc. Surg (Torino)*, **1996**, *37*(6 Suppl 1), 75-80.
- [50] Ruda M.; Samarenko M.B.; Afonskaya N.I.; Saks V.A. Reduction of ventricular arrhythmias by phosphocreatine (Neoton) in patients with acute myocardial infarction. *Am. Heart J.*, **1988**, *116*(2 Pt 1), 393-397.
- [51] Tokarska-Schlattner M.; Epand R.F.; Meiler F.; Zandomenighi G.; Neumann D.; Widmer H.R.; Meier B.H.; Epand R.M.; Saks V.; Wallimann T.; Schlattner U. Phosphocreatine interacts with phospholipids, affects membrane properties and exerts membrane-protective effects. *PLoS One*, **2012**, *7*(8), e43178.
- [52] Horn M.; Remkes H.; Dienesch C.; Hu K.; Ertl G.; Neubauer S. Chronic high-dose creatine feeding does not attenuate left ventricular remodeling in rat hearts post-myocardial infarction. *Cardiovasc. Res.*, **1999**, *43*(1), 117-124.
- [53] Gordon A.; Hultman E.; Kaijser L.; Kristjansson S.; Rolf C.J.; Nyquist O.; Sylven C. Creatine supplementation in chronic heart failure increases skeletal muscle creatine phosphate and muscle performance. *Cardiovasc. Res.*, **1995**, *30*(3), 413-418.
- [54] Andrews R.; Greenhaff P.; Curtis S.; Perry A.; Cowley A.J. The effect of dietary creatine supplementation on skeletal muscle metabolism in congestive heart failure. *Eur. Heart J.*, **1998**, *19*(4), 617-622.
- [55] Webster I.; Du Toit E.F.; Huisamen B.; Lochner A. The effect of creatine supplementation on myocardial function, mitochondrial respiration and susceptibility to ischaemia/reperfusion injury in sedentary and exercised rats. *Acta Physiol (Oxf.)*, **2012**, *206*(1), 6-19.
- [56] Graef J.L.; Smith A.E.; Kendall K.L.; Fukuda D.H.; Moon J.R.; Beck T.W.; Cramer J.T.; Stout J.R. The effects of four weeks of creatine supplementation and high-intensity interval training on cardiorespiratory fitness: a randomized controlled trial. *J. Int. Soc. Sports Nutr.*, **2009**, 618.
- [57] Murphy A.J.; Watsford M.L.; Coutts A.J.; Richards D.A. Effects of creatine supplementation on aerobic power and cardiovascular structure and function. *J. Sci. Med. Sport*, **2005**, *8*(3), 305-313.
- [58] Ireland Z.; Dickinson H.; Snow R.; Walker D.W. Maternal creatine: does it reach the fetus and improve survival after an acute hypoxic episode in the spiny mouse (*Acomys cahirinus*)? *Am. J. Obstet. Gynecol.*, **2008**, *198*(4), 431 e431-436.
- [59] Bender A.; Beckers J.; Schneider I.; Holter S.M.; Haack T.; Ruthsatz T.; Vogt-Weisenhorn D.M.; Becker L.; Genius J.; Rujescu D.; Irmeler M.; Mijalski T.; Mader M.; Quintanilla-Martinez L.; Fuchs H.; Gailus-Durner V.; de Angelis M.H.; Wurst W.; Schmidt J.; Klopstock T. Creatine improves health and survival of mice. *Neurobiol. Aging*, **2008**, *29*(9), 1404-1411.
- [60] Lunardi G.; Parodi A.; Perasso L.; Pohvozheva A.V.; Scarrone S.; Adriano E.; Florio T.; Gandolfo C.; Cupello A.; Burov S.V.; Balestrino M. The creatine transporter mediates the uptake of creatine by brain tissue, but not the uptake of two creatine-derived compounds. *Neuroscience*, **2006**, *142*(4), 991-997.
- [61] Garbati P.; Adriano E.; Salis A.; Ravera S.; Damonte G.; Millo E.; Balestrino M. Effects of amide creatine derivatives in brain hippocampal slices, and their possible usefulness for curing creatine transporter deficiency. *Neurochem. Res.*, **2014**, *39*(1), 37-45.
- [62] Roberts J.J.; Walker J.B. Feeding a creatine analogue delays ATP depletion and onset of rigor in ischemic heart. *Am. J. Physiol.*, **1982**, *243*(6), H911-916.
- [63] Jacobstein M.D.; Gerken T.A.; Bhat A.M.; Carlier P.G. Myocardial protection during ischemia by prior feeding with the creatine analog: cyclocreatine. *J. Am. Coll. Cardiol.*, **1989**, *14*(1), 246-251.
- [64] Elgebaly S.A.; Allam M.E.; Rossomando E.F.; Cordis G.A.; Forouhar F.; Farghaly A.; Kreutzer D.L. Cyclocreatine inhibits the production of neutrophil chemotactic factors from isolated hearts. *Am. J. Pathol.*, **1990**, *137*(5), 1233-1241.
- [65] Houser S.L.; Elkerm A.F.; Wei Z.; Doyle K.; Houser D.; Liu X.K.; Tyles E.; Kaddurah-Daouk R.; Elgebaly S.A. Enhancement of cardiac function by cyclocreatine in models of cardiopulmonary bypass. *J. Mol. Cell Cardiol.*, **1995**, *27*(4), 1065-1073.
- [66] Oudman I.; Clark J.F.; Brewster L.M. The effect of the creatine analogue beta-guanidinopropionic acid on energy metabolism: a systematic review. *PLoS One*, **2013**, *8*(1), e52879.
- [67] Phillips D.; Ten Hove M.; Schneider J.E.; Wu C.O.; Sebag-Montefiore L.; Aponte A.M.; Lygate C.A.; Wallis J.; Clarke K.; Watkins H.; Balaban R.S.; Neubauer S. Mice over-expressing the myocardial creatine transporter develop progressive heart failure and show decreased glycolytic capacity. *J. Mol. Cell Cardiol.*, **2010**, *48*(4), 582-590.
- [68] Santacruz L.; Hernandez A.; Nienaber J.; Mishra R.; Pinilla M.; Burchette J.; Mao L.; Rockman H.A.; Jacobs D.O. Normal cardiac function in mice with supraphysiological cardiac creatine levels. *Am. J. Physiol. Heart Circ. Physiol.*, **2014**, *306*(3), H373-H381.
- [69] Lygate C.A.; Bohl S.; ten Hove M.; Faller K.M.; Ostrowski P.J.; Zervou S.; Medway D.J.; Aksentijevic D.; Sebag-Montefiore L.; Wallis J.; Clarke K.; Watkins H.; Schneider J.E.; Neubauer S. Moderate elevation of intracellular creatine by targeting the creatine transporter protects mice from acute myocardial infarction. *Cardiovasc. Res.*, **2012**, *96*(3), 466-475.
- [70] Wu F.; Zhang J.; Beard D.A. Experimentally observed phenomena on cardiac energetics in heart failure emerge from simulations of cardiac metabolism. *Proc. Natl. Acad. Sci. USA*, **2009**, *106*(17), 7143-7148.
- [71] Guerrero-Ontiveros M.L.; Wallimann T. Creatine supplementation in health and disease. Effects of chronic creatine ingestion in vivo: down-regulation of the expression of creatine transporter isoforms in skeletal muscle. *Mol. Cell Biochem.*, **1998**, *184*(1-2), 427-437.

- [72] Ten Hove M.; Makinen K.; Sebag-Montefiore L.; Hunyor I.; Fischer A.; Wallis J.; Isbrandt D.; Lygate C.; Neubauer S. Creatine uptake in mouse hearts with genetically altered creatine levels. *J. Mol. Cell Cardiol.*, **2008**, *45*(3), 453-459.
- [73] Loike J.D.; Zalutsky D.L.; Kaback E.; Miranda A.F.; Silverstein S.C. Extracellular creatine regulates creatine transport in rat and human muscle cells. *Proc. Nat. Acad. Sci. USA*, **1988**, *85*(3), 807-811.
- [74] Zervou S.; Ray T.; Sahgal N.; Sebag-Montefiore L.; Cross R.; Medway D.J.; Ostrowski P.J.; Neubauer S.; Lygate C.A. A role for thioredoxin-interacting protein (Txnip) in cellular creatine homeostasis. *Am. J. Physiol. Endocrinol. Metab.*, **2013**, *305*(2), E263-270.
- [75] Darrabie M.D.; Arciniegas A.J.; Mantilla J.G.; Mishra R.; Vera M.P.; Santacruz L.; Jacobs D.O. Exposing cardiomyocytes to subclinical concentrations of doxorubicin rapidly reduces their creatine transport. *Am. J. Physiol. Heart Circ. Physiol.*, **2012**, *303*(5), H539-548.
- [76] Shojaiefard M.; Christie D.L.; Lang F. Stimulation of the creatine transporter SLC6A8 by the protein kinase mTOR. *Biochem. Biophys. Res. Commun.*, **2006**, *341*(4), 945-949.
- [77] Strutz-Seebohm N.; Shojaiefard M.; Christie D.; Tavare J.; Seebohm G.; Lang F. PIKfyve in the SGK1 mediated regulation of the creatine transporter SLC6A8. *Cell Physiol. Biochem.*, **2007**, *20*(6), 729-734.
- [78] Almilaji A.; Soppjani M.; Elvira B.; Borrás J.; Dermaku-Sopjani M.; Munoz C.; Warsi J.; Lang U.E.; Lang F. Upregulation of the Creatine Transporter Slc6A8 by Klotho. *Kidney Blood Press. Res.*, **2014**, *39*(6), 516-525.
- [79] Fezai M.; Elvira B.; Borrás J.; Ben-Attia M.; Hoseinzadeh Z.; Lang F. Negative Regulation of the Creatine Transporter SLC6A8 by SPAK and OSR1. *Kidney Blood Press. Res.*, **2014**, *39*(6), 546-554.
- [80] Brown E.L.; Snow R.J.; Wright C.R.; Cho Y.; Wallace M.A.; Kralli A.; Russell A.P. PGC-1alpha and PGC-1beta increase CrT expression and creatine uptake in myotubes via ERRalpha. *Biochim. Biophys. Acta*, **2014**, *1843*(12), 2937-2943.
- [81] Ndika J.D.; Martinez-Munoz C.; Anand N.; van Dooren S.J.; Kanhai W.; Smith D.E.; Jakobs C.; Salomons G.S. Post-transcriptional regulation of the creatine transporter gene: functional relevance of alternative splicing. *Biochim. Biophys. Acta*, **2014**, *1840*(6), 2070-2079.
- [82] Omerovic E.; Bollano E.; Lorentzon M.; Walser M.; Mattsson-Hulten L.; Isgaard J. Growth hormone induces myocardial expression of creatine transporter and decreases plasma levels of IL-1beta in rats during early postinfarct cardiac remodeling. *Growth Horm IGF Res.*, **2003**, *13*(5), 239-245.
- [83] Darrabie M.D.; Arciniegas A.J.; Mishra R.; Bowles D.E.; Jacobs D.O.; Santacruz L. AMPK and substrate availability regulate creatine transport in cultured cardiomyocytes. *Am. J. Physiol. Endocrinol. Metab.*, **2011**, *300*(5), E870-876.
- [84] Li H.; Thali R.F.; Smolak C.; Gong F.; Alzamora R.; Wallimann T.; Scholz R.; Pastor-Soler N.M.; Neumann D.; Hallows K.R. Regulation of the creatine transporter by AMP-activated protein kinase in kidney epithelial cells. *Am. J. Physiol. Renal. Physiol.*, **2010**, *299*(1), F167-177.
- [85] Straumann N.; Wind A.; Leuenberger T.; Wallimann T. Effects of N-linked glycosylation on the creatine transporter. *Biochem. J.*, **2006**, *393*(Pt 2), 459-469.
- [86] Wang W.; Jobst M.A.; Bell B.; Zhao C.R.; Shang L.H.; Jacobs D.O. Cr supplementation decreases tyrosine phosphorylation of the CrT in skeletal muscle during sepsis. *Am. J. Physiol. Endocrinol. Metab.*, **2002**, *282*(5), E1046-1054.
- [87] Zhao C.R.; Shang L.; Wang W.; Jacobs D.O. Myocellular creatine and creatine transporter serine phosphorylation after starvation. *J. Surg. Res.*, **2002**, *105*(1), 10-16.
- [88] Walzel B.; Speer O.; Boehm E.; Kristiansen S.; Chan S.; Clarke K.; Magyar J.P.; Richter E.A.; Wallimann T. New creatine transporter assay and identification of distinct creatine transporter isoforms in muscle. *Am. J. Physiol. Endocrinol. Metab.*, **2002**, *283*(2), E390-401.
- [89] Gianella-Borradori M.; Christou I.; Bataille C.J.; Cross R.L.; Wynne G.M.; Greaves D.R.; Russell A.J. Ligand-based virtual screening identifies a family of selective cannabinoid receptor 2 agonists. *Bioorg. Med. Chem.*, **2015**, *23*(1), 241-263.
- [90] Stahura F.L.; Bajorath J. New methodologies for ligand-based virtual screening. *Curr. Pharm. Des.*, **2005**, *11*(9), 1189-1202.
- [91] Freedman J.C.; Novak T.S. Optical measurement of membrane potential in cells, organelles, and vesicles. *Met. Enzymol.*, **1989**, *172*, 102-122.
- [92] Ndika J.D.; Lusink V.; Beaubrun C.; Kanhai W.; Martinez-Munoz C.; Jakobs C.; Salomons G.S. Cloning and characterization of the promoter regions from the parent and paralogous creatine transporter genes. *Gene*, **2014**, *533*(2), 488-493.