



Published in final edited form as:

*Cancer Prev Res (Phila)*. 2013 April ; 6(4): 290–298. doi:10.1158/1940-6207.CAPR-12-0449-T.

## Defining the Role of Histone Deacetylases in the Inhibition of Mammary Carcinogenesis by Dietary Energy Restriction (DER): Effects of Suberoylanilide Hydroxamic Acid (SAHA) and DER in a Rat Model

Zongjian Zhu<sup>1</sup>, Weiqin Jiang<sup>1</sup>, John N. McGinley<sup>1</sup>, and Henry J. Thompson<sup>1,2</sup>

<sup>1</sup>Cancer Prevention Laboratory, Colorado State University, Fort Collins, CO 80523

### Abstract

Dietary energy restriction (DER) inhibits experimentally-induced mammary cancer, an effect accompanied by elevated levels of silent information regulator 2 (SIRT1), a class III histone deacetylase (HDAC). However, the effect of DER on targets of other classes of HDACs has not been reported, a highly relevant issue given evidence that HDAC induction favors the development of cancer and tumor growth. Experiments were conducted to determine if suberoylanilide hydroxamic acid (SAHA), a histone deacetylase inhibitor with broad activity, would affect the anti-cancer activity of DER. Female Sprague Dawley rats (n=30/group) were injected with 1-methyl-1-nitrosourea (50 mg/kg) at 21 days of age and 7 days thereafter were randomized to groups fed: 1) control diet (AIN-93G), 2) 0.1% SAHA (w/w), 3) 40% DER, or 4) 0.1% SAHA+40% DER. An additional group was fed 0.1% SAHA+40%DER for 5 weeks and released to control diet for 3 weeks. DER significantly reduced mammary cancer incidence, multiplicity, and cancer burden and prolonged cancer latency ( $P < 0.01$ ). Cancer inhibition was maintained in SAHA+DER despite evidence that histone (H2A<sup>Lys9</sup>, H2B<sup>Lys5</sup>, and H4<sup>Lys5/8/12/16</sup>, but not H3<sup>Lys9</sup>  $P < 0.001$ ) and non-histone protein deacetylation (p53<sup>Lys373</sup> and p53<sup>Lys382</sup>  $P < 0.001$ ), induced by DER, were reversed by SAHA. This indicates that DER's inhibition of cancer is not dependent on HDAC induction. After releasing rats from DER+SAHA, cancer multiplicity remained lower than control ( $P < 0.05$ ), consistent with apoptosis mediated cell deletion. These findings support further investigation of the hypothesis that HDAC induction by DER blunts its anti-carcinogenic impact.

### Keywords

apoptosis; dietary energy restriction; histone deacetylase; mammary carcinogenesis; suberoylanilide hydroxamic acid

<sup>2</sup>To whom correspondence and requests for reprints should be addressed: Cancer Prevention Laboratory, Colorado State University, 1173 Campus Delivery Fort Collins, CO 80523; Phone (970) 491-7748; Fax: (970) 491-3542; henry.thompson@colostate.edu.

**Disclosure of Potential Conflicts of Interest:** There are no conflicts of interest.

**Conflict of Interest Statement:** None.

## Introduction

Dietary energy restriction (DER), also referred to as caloric restriction, is a physiological inhibitor of the carcinogenic process in many model systems including those for breast cancer (1, 2). Recognizing that DER is a model for investigating weight gain prevention and is not a model by which to study the effects of weight loss (3), there is strong evidence that DER's powerful effects are also operative in human populations in which preventing adult weight gain is associated with reduced lifetime risk for breast cancer (4–6). At the cellular level, DER acts by reducing the drive for the proliferation of transformed cells and by inducing cell death via apoptosis, effects that account, at least in part, for DER's cancer inhibitory activity (7–9). The effect of DER on apoptosis induction is dominant but appears insufficient to result in the deletion of populations of premalignant cells that would render sustained protection against cancer in the absence of continuous treatment (10). Since apoptosis induction is one of a number of mechanisms that are targeted to kill cancer cells during therapy, the induction of apoptosis by DER, and its preferential deletion of transformed cells could conceivably offer a new approach to cancer prevention through early cure via elimination of pathologies before they become clinically detectable.

While an increasing amount of data is accumulating about the mechanisms that underlie the cancer inhibitory activity of DER, those investigations have uncovered two effects that could serve to limit DER's protective activity (11). They are: induction of autophagy mediated by down regulation of mammalian target of rapamycin (mTOR) signaling (12), and induction of SIRT1, a class III histone deacetylase (HDAC) (13). The work reported herein focused on HDAC mediated effects of DER.

SIRT1 is a member of one of three classes of HDACs. While the induction of SIRT1 by DER has been widely reported and has been frequently linked to the effects of DER on longevity extension (14), emerging evidence indicates that induction of SIRT1 and other classes of HDACs are associated with pro-carcinogenic effects and enhanced tumor growth (15–17). Consequently, HDACs are currently targets for drug development (18–20). However, there is limited information about how DER affects overall HDAC activity or the acetylation of histone and/or non-histone protein targets of HDAC's in mammary carcinoma. Because of the complex role that protein acetylation plays in carcinogenesis and the limited information available about energetics-driven changes in protein acetylation, the study reported herein was designed to assess effects of DER on site specific histone acetylation and on acetylation of p53 at sites known to play role in apoptosis induction (21–23). As a starting point for this work, the effect of DER was studied alone and in combination with suberoylanilide hydroxamic acid (SAHA), an HDAC inhibitor generally considered to target class I and II HDACs, but that has also been reported to inhibit SIRT1 gene transcription (24). An advantage of using SAHA was that its effect on chemically induced mammary carcinogenesis in the rat has been investigated, providing useful information about dose and route of administration (25, 26).

## Materials and Methods

### Chemicals and Reagents

Primary antibodies used in this study were anti-Bax, anti-Bcl 2 and XIAP from BD Biosciences (San Diego, CA); anti-pACC<sup>Ser79</sup>/ACC, anti-pAkt<sup>Ser473</sup>/Akt, anti-pAMPK<sup>Thr172</sup>/AMPK, anti-Apaf-1, anti-Cleaved Caspase-3, anti-p4EBP1<sup>Thr37/46</sup>/4EBP1, anti-E2F-1, anti-HDAC1, anti-pmTOR<sup>Ser2448</sup>/mTOR, anti-pP70S6K<sup>Thr389</sup>/P70S6K, anti-PARP, anti-PI3Kp110, anti-pRaptor<sup>Ser792</sup>/Raptor, anti-pRb<sup>Ser780</sup>/Rb, anti-SIRT-1, anti-rabbit immunoglobulin-horseradish peroxidase-conjugated secondary antibody and LumiGLO reagent with peroxide were purchased from Cell Signaling Technology (Beverly, MA); anti-IGF-1R $\alpha$ , anti-p53, anti-p21 and anti-mouse immunoglobulin-horseradish peroxidase-conjugated secondary antibody were from Santa Cruz (Santa Cruz, CA); mouse anti- $\beta$ -actin primary antibody was obtained from Sigma Aldrich (St. Louis, MO); anti-acetyl-p53<sup>Lys373</sup> and anti-acetyl-p53<sup>Lys373/382</sup>, anti-actyl-histone H2A<sup>Lys9</sup>, anti-actyl-histone H2B<sup>Lys5</sup>, anti-actyl-histone H3<sup>Lys9</sup>, and anti-actyl-histone H4<sup>Lys5,8,12,16</sup> were from Millipore (Millipore, Billerica, MA). Carcinogen: 1-methyl-1-nitrosourea (MNU) was obtained (Ash Stevens, Detroit, MI) and stored at  $-80^{\circ}\text{C}$  prior to use. The following kits and reagents were used to conduct the experiments: glucose-hexokinase liquid stable reagent (Thermo Fisher Scientific Inc., Waltham, MA); multiplex and signalplex kits for insulin, leptin, and insulin growth factor-1 as well as ELISA kit of adiponectin (Millipore, Billerica, MA); insulin growth factor binding protein 3 (IGFBP-3) ELISA kit (Mediagnost, Reutlingen, Germany); Suberoylanilide hydroxamic acid (SAHA) was purchased from ChemieTek (Indianapolis, IN). Commercially available reagents for determination of plasma glucose were purchased from Thermo Fisher Scientific Inc (Waltham, MA).

### Experimental Design

Female Sprague Dawley rats were obtained (Charles River, Wilmington, MA) at 20 days of age. At 21 days of age, rats were injected with 50 mg MNU/kg body weight, i.p., as previously described (27). Rats were individually housed in solid bottomed polycarbonate cages equipped with food cups. At 28 days of age, 1 week after carcinogen injection, rats were assigned by stratified randomization using body weight to one of five groups (30 rats/group): 1) ad libitum fed control (Ad Lib Ctl); 2) 0.1%SAHA (w/w); 3) 40%DER; 4) 40%DER + 0.1%SAHA (w/w); and 5) 40%DER + 0.1%SAHA (w/w)-Release. The approach used for feeding rats has been described in detail (7). Briefly, rats were ad libitum meal-fed with AIN-93G diet for Group 1 or 0.1% (w/w) dietary SAHA in AIN-93G diet for Group 2, and were restricted to 60% the amount of that control animals consumed in remaining groups (40%DER; 4) 40%DER + 0.1%SAHA (w/w); and 5) 40%DER + 0.1%SAHA (w/w)-Release) for six weeks. During the last three weeks of the experiment, the animals in Groups 1 – 4 were maintained on the same diet and fed in the same manner. The animals in the Release group (Group 5) were switched to AIN-93G diet and fed in the same manner as Group 1, i.e. they were released from 40% DER + 0.1% (w/w) SAHA diet.

Throughout the experiment, animal rooms were maintained at  $22 \pm 1^{\circ}\text{C}$  with 50% relative humidity and a 12-h light/12-h dark cycle. Rats were weighed twice per week and were palpated for the detection of mammary tumors twice weekly starting from 21 days post

carcinogen. At necropsy, rats were skinned and the skin to which mammary gland chains were attached was examined under translucent light for detectable mammary pathologies. All grossly detectable mammary gland pathologies were excised and prepared for histological classification according to published criteria (28, 29). Only confirmed mammary carcinomas are reported since they represented > 98% of the pathologies that were observed. The experimental protocols were reviewed and approved by the Institutional Animal Care and Use Committee and conducted according to the committee guidelines.

### Blood collection and plasma biomarker analyses

**Blood collection**—Following an overnight fast, rats were euthanized via inhalation of gaseous carbon dioxide and blood was directly obtained from the retro-orbital sinus and gravity fed through heparinized capillary tubes (Fisher Scientific, Pittsburgh, PA) into EDTA coated tubes (Becton Dickinson, Franklin Lakes, NJ) for plasma that was isolated by centrifugation at  $1000 \times g$  for 10 min at room temperature.

**Assessment of circulating molecules**—Glucose was determined using a kit obtained from Thermo Fisher Scientific Inc. Insulin-like growth factor 1 (IGF-1), IGF binding protein 3 (IGFBP-3), adiponectin, insulin, and leptin, in plasma were determined using a commercially available ELISA or as previously described (30).

**Western blotting**—Forty mammary carcinomas (8 per group) were homogenized for Western blotting as described previously (11). The levels of p21, Bax, Bcl 2, XIAP, pACC<sup>Ser79</sup>/ACC, pAkt<sup>Ser473</sup>/Akt, pAMPK<sup>Thr172</sup>/AMPK, Apaf-1, Cleaved Caspase-3, p4EBP1<sup>Thr37/46</sup>/4EBP1, E2F-1, HDAC1, pmTOR<sup>Ser2448</sup>/mTOR, pP70S6K<sup>Thr389</sup>/P70S6K, PARP, PI3Kp110, pRaptor<sup>Ser792</sup>/Raptor, pRb<sup>Ser780</sup>/Rb, SIRT-1, IGF-1R $\alpha$ , p53, acetyl-p53<sup>Lys373</sup>, acetyl-p53<sup>Lys373/382</sup>, acetyl-histone H2A<sup>Lys9</sup>, acetyl-histone H2B<sup>Lys5</sup>, acetyl-histone H3<sup>Lys9</sup>, and acetyl-histone H4<sup>Lys5/8/12/16</sup> and  $\beta$ -actin were determined using specific primary antibodies, followed by treatment with the appropriate peroxidase-conjugated secondary antibodies and visualized by LumiGLO reagent western blotting detection system. The chemiluminescence signal was captured using a ChemiDoc densitometer (Bio-Rad) and analyzed using Quantity One software (Bio-Rad). All Western blot signals were within a range where the signal was linearly related to the mass of protein and actin-normalized scanning density data were used for analysis.

### Statistical Analyses

Differences among groups were evaluated as follows: incidence of mammary carcinomas by the Fischer exact test, the number of mammary carcinomas per rat (multiplicity) by ANOVA after square root transformation of tumor count data, and cancer burden and actin-normalized Western blot data by the nonparametric Kruskal-Wallis test with *post hoc* unpaired comparisons using the Dwass-Steel-Christchlow-Fligner test (31–33). Cancer latency was evaluated by survival analysis using the Mantel-Haenszel method (34). Differences in final body weight and circulating analytes were evaluated by ANOVA with *post hoc* comparisons by the method of Tukey. Effects of treatment group on series of mechanistically interrelated variables were evaluated by multivariate analysis of variance (35). All analyses were performed using Systat statistical analysis software, version 13

(Systat Software, Inc., Chicago, IL). All  $P$  values are 2-sided and statistical significance was set *a priori* at  $P < 0.05$ .

## Results

### Body weight gain

While SAHA had no significant effect on rate of growth, DER slowed the rate of growth either alone or in combination with SAHA as intended, but SAHA+DER had no additional effect on growth in comparison to DER alone. Discontinuing treatment with SAHA+DER (the release group) resulted in rapid weight gain (Fig. 1A), with final body weights approaching that of the control group within 3 weeks from their release from the intervention.

### Carcinogenic Response

SAHA numerically suppressed the carcinogenic response in comparison to the control group but the effects were not statistically significant after adjustment for multiple comparisons (Fig. 1B, C, and D). Cancer incidence was reduced 17.1%, cancer multiplicity was 36.5% lower, cancer burden was decreased by 74.9%, and cancer latency was extended 9.6%. The carcinogenic response was significantly inhibited by DER or DER + SAHA. In comparison to the control group, cancer incidence was reduced 57.2% or 42.8%, cancer multiplicity was 84.9% or 73.8% lower, cancer burden was decreased 91.6% or 91.0%, and cancer latency was extended 23.1% or 21.2%, respectively. When the animals in DER + SAHA-Release group were ad libitum fed control diet for three weeks after six-weeks of feeding the DER + SAHA experimental diet, inhibition of the carcinogenic response was reversed, but cancer multiplicity remained lower than observed in the control group ( $P < 0.05$ ).

### Acetylation histones and p53

Acetylation of histones in mammary carcinomas was significantly increased by SAHA (SAHA vs. control or DER,  $P < 0.05$ , multivariate Hotelling  $P < 0.001$ ), but was decreased by DER (DER vs. control or SAHA,  $P < 0.05$ , multivariate Hotelling  $P < 0.001$ ), although DER did not affect acetylation of histone H3 (Table 1, representative Western blots in Supplementary Fig. S1). SAHA in combination with DER appeared to block DER mediated histone deacetylation with values being similar to those observed in the control group.

Mammary carcinomas from rats released from SAHA+DER also had levels of histone acetylation similar to the control group with the exception of H2B which remained low ( $P < 0.05$ ). Similarly, acetyl-p53<sup>Lys373</sup> and acetyl-p53<sup>Lys373/382</sup> were significantly increased in carcinomas from SAHA treated rats, decreased in DER carcinomas and DER mediated deacetylation was restored by SAHA. Acetylation of both sites was similar in carcinomas from rats released from SAHA+DER and control carcinomas.

Protein levels of SIRT1 and HDAC1 were also determined (Table 1). SAHA decreased levels of both proteins (SAHA vs. control or DER,  $p < 0.05$ ); whereas, DER increased SIRT1 (DER vs. control or SAHA,  $P < 0.05$ ) and had no effect on HDAC1. SAHA diminished SIRT1 induction by DER and DER had no effect on the SAHA mediated

reduction in HDAC1. Levels of both proteins were similar in the SAHA+DER release and control groups.

### Apoptosis and cell cycle regulation

Patterns of acetylation of histones and non-histone proteins such as p53 affect many cellular processes. The focus of this study was on apoptosis. Intervention effects on two indicators of apoptosis are shown (Table 2, representative Western blots in Supplementary Fig. 2S). Both SAHA and DER increased levels of cleaved caspase-3 and PARP cleavage reflected by the ratio of PARP89 to PARP 116 (SAHA or DER vs. control,  $P < 0.05$ ). While these effects were observed in the SAHA+DER group, the level of cleaved caspase 3 was lower than in DER alone (SAHA+DER vs. DER,  $P < 0.05$ ) and the level of cleaved PARP was higher than in either DER or SAHA alone (SAHA+DER vs. SAHA or DER,  $P < 0.05$ ). Cleaved caspase-3 in the SAHA+DER release group was similar to that observed in the control group but the level of cleaved PARP remained elevated in carcinomas from the Release group. Effects on cellular machinery involved in regulating apoptosis were also investigated. Apaf-1 was elevated by SAHA, DER, and SAHA+DER as well as the SAHA+DER release group compared to the control ( $P < 0.05$ ). The widely assessed indicator of apoptosis mediated by the intrinsic pathway, i.e. the ratio of BAX/BCL-2 was also elevated by SAHA or DER and almost 2-fold further elevated in the SAHA+DER group compared to the control ( $P < 0.05$ ), and it remained elevated in the SAHA+DER release group. The effect on the ratio was primarily accounted for by suppression of the level of cellular BCL-2 in the intervention groups. Levels of XIAP, an inhibitor of caspase activity, were suppressed by SAHA or DER compared to the control ( $P < 0.05$ ) but unaffected in the combined treatment or release groups.

Given that effects on cell proliferation are generally observed to occur concomitantly with apoptosis, and that alterations in acetylation are known to impact this process, three commonly affected molecular components of the cell cycle apparatus were assessed (Table 2). DER had the greatest effects in reducing the phosphorylation of Rb and levels of unbound E2F1 and in inducing p21 compared to the control ( $P < 0.05$ ). SAHA was without effect and tended to blunt the effects of DER on these molecular determinants when given in combination. Levels of these proteins in the release group were intermediate to those observed in the SAHA or DER group.

### mTOR-related signaling

HDACs are induced by cellular stress and DER is a recognized energy stressor. Therefore, it was decided that one of the primary networks that responds to energetic stress should be evaluated. DER induced the same pattern of mTOR-related regulation (Table 3, representative Western blots in Supplementary Fig. S3) as previously reported (11). Specifically, compared to the control, DER induced upregulation of AMPK-activated protein kinase and its direct targets, acetyl CoA carboxylase (ACC) and Raptor, and it suppressed multiple elements in the insulin/IGF-1 signaling cascade that also regulate mTOR. Specifically, DER downregulated IGF receptor 1 (IGF1R $\alpha$ ), PI-3 kinase subunit p110 (PIK3CA), activated protein kinase B (Akt) and the site on mTOR that it phosphorylates. Moreover, DER down regulated two downstream targets of activated mTOR, p70 S6K and

4EBP1. Of note, because it has not been previously reported, SAHA alone induced the same pattern of mTOR related regulation as DER. Although the effects were not as robust as observed in response to DER, they were generally statistically significant. This was confirmed by multivariate regression of all parameters (Table 3) with multivariate Hotelling statistics  $P < 0.001$  for both DER and SAHA. While SAHA reversed the effects of DER on the acetylation of protein targets (Table 2), the effects of SAHA+DER on mTOR-related signaling were essentially identical to the effects of DER alone. In the SAHA-DER release group, the pattern of regulation was similar to that observed in the control group.

### Systemic Factors

Given the unexpected effects of SAHA on mTOR-related signaling, plasma was assessed for circulating factors known to regulate various nodes of this signaling network. Compared to the control, SAHA alone had no significant effects on IGF-1, IGFBP3, insulin, glucose, or leptin, although it did induce a marked increase in adiponectin (Table 4). On the other hand, these same parameters, other than adiponectin, were significantly lower in the plasma of DER and SAHA+DER rats in comparison to the control group and adiponectin was elevated. The values in the SAHA+DER release group for these plasma analytes were similar to the values observed in the control group.

### Discussion

Investigation of the role of protein acetylation and deacetylation in the prevention and control of cancer is a rapidly expanding field and not surprisingly, there are many contradictions in what has been reported. Nonetheless, it is clear that changes in acetylation patterns occur in response to cellular stresses including those associated with the development of cancer and with DER (13). Other than the consistent observation that chronic DER induces SIRT1, limited additional information exists about the role of DER-mediated HDAC induction in accounting for DER's powerful, physiologic inhibition of cancer, especially in target organs such as the breast.

### Carcinogenic response and acetylation

A growing body of literature indicates that protein deacetylation, at least in certain contexts and involving specific protein acetylation sites, promotes several steps in the carcinogenic process. If this is in fact the case, it creates the expectation that inhibition of HDAC activity would protect against cancer. Dietary administration of SAHA, a class I and II HDAC inhibitor that also inhibits SIRT1 gene transcription, at a concentration that had no effect on animal growth rate (Table 1, Fig. 1A), reduced all aspect of the carcinogenic response although the effects were not statistically significant when adjusted for multiple comparisons. This finding is consistent with other reports in similar model systems for breast cancer (25, 26). And SAHA increased the acetylation of the proteins selected for assessment (Table 1). On the other hand, DER, which robustly inhibited all the criteria by which the carcinogenic response was assessed (Table 1, Fig. 1), induced the deacetylation of the same proteins whose acetylation SAHA increased (Table 1). When SAHA and DER were combined, protein acetylation was restored to the level observed in carcinomas from control animals, but inhibition of carcinogenesis was essentially the same as observed in the

DER only group. These data are consistent with at least one of three explanations: the protective activity of DER is independent of its effect on HDAC activity, the protective effect of DER under the conditions of the experiment is so dominant based on other mechanisms that changes in anticancer activity associated with DER and SAHA mediated effects on acetylation were of no consequence, or the acetylation sites assessed are not those critical to elucidating the effects of DER. While the effects on cancer incidence of releasing rats from combined treatment with SAHA and DER support the notion that DER's anticancer activity is independent of effects on protein acetylation, the cancer multiplicity data in which cancers per rat remained 2.5 times lower than in the control group, leave open the question of whether blocking the effects of DER on protein deacetylation might result in apoptosis-mediated deletion of transformed cells and sustainable protection against some aspects of carcinogenesis in the absence of continuous treatment, a phenomenon that we refer to as early cure which is a type of cancer prevention that has been sought since the term chemoprevention was coined (36, 37).

### Protein acetylation and tumor size homeostasis

In an effort to gain more insight about the alternatives posed in the previous subsection about the effects of DER on the carcinogenic response, attention was directed to cellular processes that regulate tumor growth and that are markedly affected by DER as previously reported (8, 9), specifically apoptosis and cell growth. While effects on elements of the cell cycle machinery involved with the G1/S transition were apparent and consistent with previously reported effects of DER, the outcome measures of apoptosis varied in a manner consistent with the unmasking of the apoptotic potential of DER by SAHA (Table 2). Levels of cleaved PARP and the ratio of BAX/BCL2, indicators of apoptosis induction and the pro-apoptotic potential of the environment, respectively, were markedly elevated in the SAHA +DER group in comparison to the DER group (Table 2). This is consistent with the changes in acetylation patterns reported (Table 1) and the effects of HDAC inhibitors on p53 and BCL2 (38–40). It is noteworthy that cleaved caspase 3 did not follow this pattern of induction. Whether this is due to higher levels of activated caspase 3 inhibitor, XIAP, which was induced in the SAHA+DER group, remains to be determined. If in fact, HDAC inhibitors do permit greater induction of apoptosis by DER, which is consistent with the cancer multiplicity data in the SAHA+DER release group, it will be critical to determine the basis of selectivity in deleting transformed foci of cells.

### Metabolic regulation

Patterns of protein acetylation are known to be involved in regulating many aspects of cellular function including energy metabolism with a particularly strong causal linkage existing class III HDACs, the sirtuins, which are activated by NAD<sup>+</sup>. Presumably, DER induces SIRT1 due to its effect on the NAD/NADH ratio and the energy charge of the cell, although this has not been investigated in cancer models, and many argue that DER mediates effects on systemic factors and that it does not directly impact energy metabolism in peripheral tissues such as the mammary gland (41). Those arguments aside, DER induced higher levels of SIRT1 in mammary carcinoma without affecting cellular content of HDAC1 (Table 1). Hence, a direct effect of DER in the target tissue is apparent and might signal that energy metabolism is perturbed in these carcinomas. Consistent with published work, SAHA



was observed to reduce cellular levels of SIRT1 as well as HDAC1, which in itself would be expected to reduce protein deacetylation.

The clear indication from the literature is that HDACs, at least class III, may play a role as intracellular energy sensors (13). Given our published evidence that a major site of DER's impact on cancer is via highly conserved intracellular energy sensors and that the mTOR-related network of proteins is involved in mediating DERs anticancer activity, the effects of the various interventions on mTOR-related signaling was assessed. SAHA downregulated mTOR activity at each node that was studied (Table 3). While the magnitude of the effect was not as robust as DER, the effects were nonetheless statistically significant. Such activity has not previously been attributed to SAHA, but patterns of acetylation have been noted to affect mTOR activity, although not in mammary carcinomas (42). What was striking about the effects of SAHA is that it suppressed activated Akt in the absence of any effect on plasma levels of fasting insulin, IGF-1, IGFBP3 or glucose (Table 4). SAHA also induce activation of AMP activated protein kinase, an effect that might be associated with its induction of plasma adiponectin levels, since adiponectin is known to activate AMPK. Thus, SAHA and perhaps other HDAC inhibitors may represent a new category of energy restriction mimetic agent (43). DER induced effects on both circulating factors and mTOR related signaling were consistent with previous reports. However, there was little evidence that SAHA+DER altered circulating factors or the activity of mTOR-related signaling nodes that would suggest combinatorial effects on this network, a network that is misregulated in the majority of human breast cancers (44–47).

### Limitations

A limitation of the work reported is the number of acetylation sites and HDACs that were accessed. Nonetheless, the findings provide valuable information that can be used to guide future experiments. Another limitation was the duration of time that the SAHA+DER group was monitored following release from treatment since it could be argued that what was observed was due to a delay in tumor emergence rather than the deletion of transformed foci of mammary epithelial cells.

### Translational significance

The identification of short term intervention strategies that can render long term protection against cancer would meet a critical public health objective. Given the episodic nature and high prevalence of dieting in the human population (48), efforts to identify agents that could be coupled with dieting to induce deletion of transformed foci of cells from a tissue could have high clinical impact. The evidence reported herein, particularly with regard to indicators of apoptosis and the machinery that regulate the intrinsic pathway of apoptosis induction, indicate that further investigation of HDAC inhibitors in combination with DER are warranted. A focus on inhibitors of Class III HDACs is of interest given their involvement in the cellular stress response, apoptosis, and energy metabolism.

### Supplementary Material

Refer to Web version on PubMed Central for supplementary material.

## Acknowledgments

### Grant Support

This work was supported in part by United States Public Health Services Grant CA52626 from the National Cancer Institute.

The authors thank Amanda Blasingame and Elizabeth Neil for their expert technical assistance.

## Abbreviations

<b>4EBP1</b>	eukaryotic translation initiation factor 4E-binding protein 1
<b>ACC</b>	acetyl-CoA carboxylase
<b>Akt</b>	protein kinase B
<b>AMPK</b>	adenosine monophosphate-activated protein kinase
<b>Apaf-1</b>	apoptosis protease-activating factor-1
<b>Bax</b>	Bcl (B cell lymphoma)-associated X
<b>Bcl</b>	B cell leukemia oncogene
<b>CCD</b>	charge-coupled device
<b>DSCF</b>	Dwass-Steel-Chritchlow-Fligner
<b>DTT</b>	dithiothreitol
<b>DER</b>	dietary energy restriction
<b>E2F1</b>	transcription factor family including E2F- and DP-like subunits
<b>EDTA</b>	Ethylene diamine tetraacetic acid
<b>EGTA</b>	ethylene glycol tetraacetic acid
<b>H2A</b>	actyl-histone H2A
<b>H2B</b>	actyl-histone H2B
<b>H3</b>	actyl-histone H3
<b>H4</b>	actyl-histone H4
<b>HDAC</b>	histone deacetylase
<b>IGF-1</b>	insulin-like growth factor 1
<b>IGFBP-3</b>	insulin-like growth factor binding protein 3
<b>IGF-1R</b>	insulin growth factor 1 receptor
<b>MNU</b>	N-methyl-N-nitrosourea
<b>mTOR</b>	mammalian target of rapamycin
<b>P70S6K</b>	70-kDa ribosomal protein S6 kinase
<b>PARP</b>	Poly (ADP-ribose) polymerase

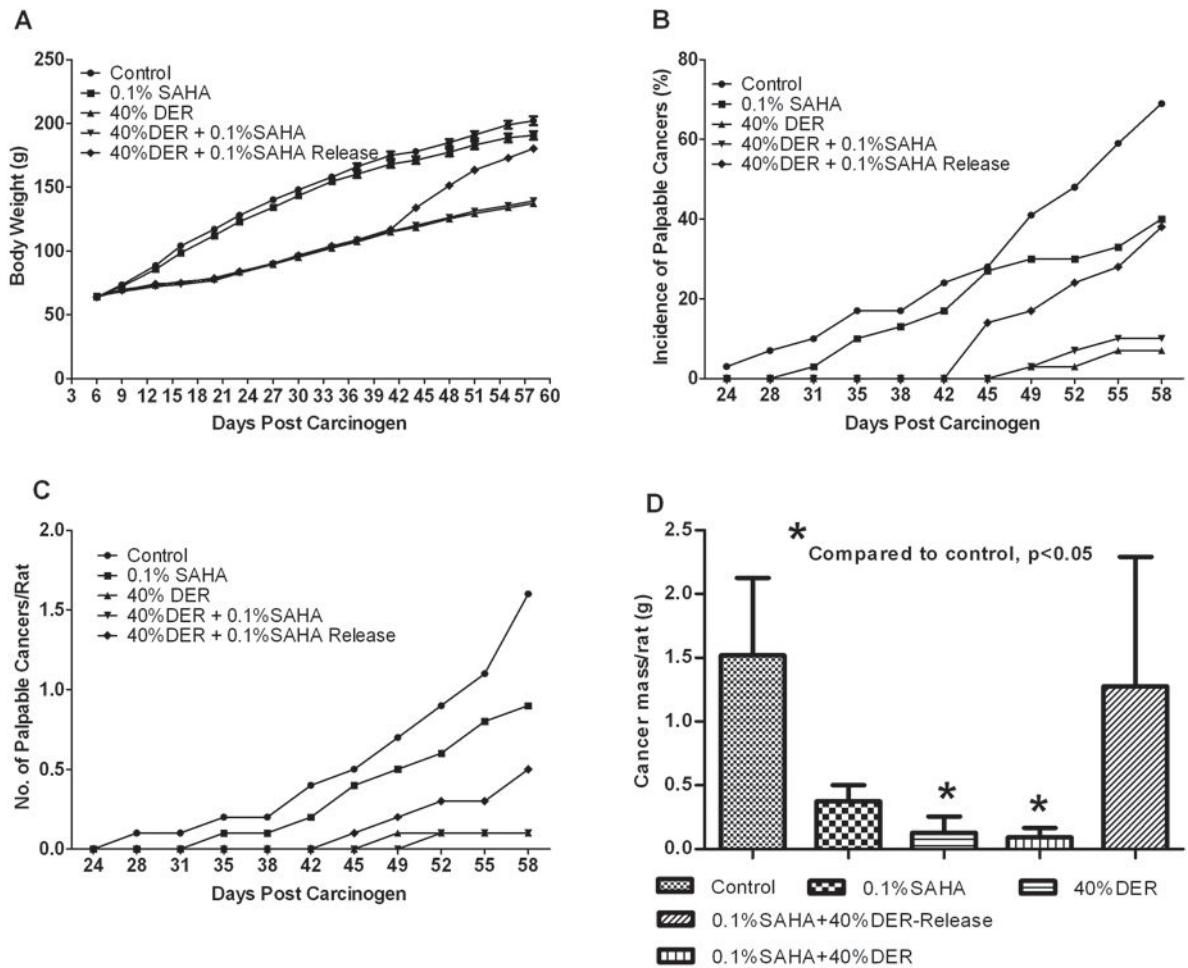
<b>PI3Kp110</b>	Phosphoinositide 3-kinase p110
<b>PPAR</b>	peroxisome proliferator-activated receptor
<b>Raptor</b>	regulatory associated protein of mTOR
<b>Rb</b>	retinoblastoma
<b>SAHA</b>	suberoylanilide hydroxamic acid
<b>SDS-PAGE</b>	sodium dodecyl sulfate-polyacrylamide gradient gel electrophoresis
<b>SIRT-1</b>	sirtuin 1
<b>XIAP</b>	X-linked inhibitor of apoptosis protein

## References

1. Thompson HJ, McTiernan A. Weight cycling and cancer: weighing the evidence of intermittent caloric restriction and cancer risk. *Cancer Prev Res (Phila)*. 2011; 4:1736–42. [PubMed: 21982873]
2. Hursting SD, Smith SM, Lashinger LM, Harvey AE, Perkins SN. Calories and carcinogenesis: lessons learned from 30 years of calorie restriction research. *Carcinogenesis*. 2010; 31:83–9. [PubMed: 19969554]
3. Thompson, HJ.; Jiang, W.; Zhu, Z. Energetics and Cancer: Exploring a Road Less Traveled. In: McTiernan, A., editor. *Physical Activity, Dietary Calorie Restriction, and Cancer*. 1. Springer Science + Business Media, LLC; 2011. p. 55-67.
4. Thompson HJ, McTiernan A. Weight cycling and cancer: weighing the evidence of intermittent caloric restriction and cancer risk. *Cancer Prev Res (Phila)*. 2011; 4:1736–42. [PubMed: 21982873]
5. International Agency for Research on Cancer. *Physical Activity, Weight Control, and Cancer*. [8]. Lyon: IARC Press; 2002. Vainio, H.; Bianchini, IF. *Cancer Prevention Handbook*.
6. World Cancer Research Fund, American Institute for Cancer Research. *Food, Nutrition, Physical Activity, and the Prevention of Cancer: a Global Perspective*. Washington, DC: AICR; 2007.
7. Zhu Z, Haegele AD, Thompson HJ. Effect of caloric restriction on pre-malignant and malignant stages of mammary carcinogenesis. *Carcinogenesis*. 1997; 18:1007–12. [PubMed: 9163688]
8. Jiang W, Zhu Z, Thompson HJ. Effect of energy restriction on cell cycle machinery in 1-methyl-1-nitrosourea-induced mammary carcinomas in rats. *Cancer Res*. 2003; 63:1228–34. [PubMed: 12649181]
9. Thompson HJ, Zhu Z, Jiang W. Identification of the apoptosis activation cascade induced in mammary carcinomas by energy restriction. *Cancer Res*. 2004; 64:1541–5. [PubMed: 14973070]
10. Zhu Z, Jiang W, McGinley J, Wolfe P, Thompson HJ. Effects of dietary energy repletion and IGF-1 infusion on the inhibition of mammary carcinogenesis by dietary energy restriction. *Mol Carcinog*. 2005; 42:170–6. [PubMed: 15599926]
11. Jiang W, Zhu Z, Thompson HJ. Dietary energy restriction modulates the activity of AMP-activated protein kinase, Akt, and mammalian target of rapamycin in mammary carcinomas, mammary gland, and liver. *Cancer Res*. 2008; 68:5492–9. [PubMed: 18593953]
12. Alers S, Loffler AS, Wesselborg S, Stork B. Role of AMPK-mTOR-Ulk1/2 in the regulation of autophagy: cross talk, shortcuts, and feedbacks. *Mol Cell Biol*. 2012; 32:2–11. [PubMed: 22025673]
13. Kwon HS, Ott M. The ups and downs of SIRT1. *Trends Biochem Sci*. 2008; 33:517–25. [PubMed: 18805010]
14. Baur JA, Chen D, Chini EN, Chua K, Cohen HY, de CR, et al. Dietary restriction: standing up for sirtuins. *Science*. 2010; 329:1012–3. [PubMed: 20798296]
15. Marks PA, Richon VM, Rifkind RA. Histone deacetylase inhibitors: inducers of differentiation or apoptosis of transformed cells. *J Natl Cancer Inst*. 2000; 92:1210–6. [PubMed: 10922406]

16. Liu T, Liu PY, Marshall GM. The critical role of the class III histone deacetylase SIRT1 in cancer. *Cancer Res.* 2009; 69:1702–5. [PubMed: 19244112]
17. Liu T, Kuljaca S, Tee A, Marshall GM. Histone deacetylase inhibitors: multifunctional anticancer agents. *Cancer Treat Rev.* 2006; 32:157–65. [PubMed: 16516391]
18. Baur JA, Ungvari Z, Minor RK, Le Couteur DG, de CR. Are sirtuins viable targets for improving healthspan and lifespan? *Nat Rev Drug Discov.* 2012; 11:443–61. [PubMed: 22653216]
19. Ma X, Ezzeldin HH, Diasio RB. Histone deacetylase inhibitors: current status and overview of recent clinical trials. *Drugs.* 2009; 69:1911–34. [PubMed: 19747008]
20. Stunkel W, Campbell RM. Sirtuin 1 (SIRT1): the misunderstood HDAC. *J Biomol Screen.* 2011; 16:1153–69. [PubMed: 22086720]
21. Marks PA, Richon VM, Rifkind RA. Histone deacetylase inhibitors: inducers of differentiation or apoptosis of transformed cells. *J Natl Cancer Inst.* 2000; 92:1210–6. [PubMed: 10922406]
22. Cellai C, Balliu M, Laurenzana A, Guandalini L, Matucci R, Miniati D, et al. The new low-toxic histone deacetylase inhibitor S-(2) induces apoptosis in various acute myeloid leukaemia cells. *J Cell Mol Med.* 2012; 16:1758–65. [PubMed: 22004558]
23. Condorelli F, Gnemmi I, Vallario A, Genazzani AA, Canonico PL. Inhibitors of histone deacetylase (HDAC) restore the p53 pathway in neuroblastoma cells. *Br J Pharmacol.* 2008; 153:657–68. [PubMed: 18059320]
24. Kyrylenko S, Kyrylenko O, Suuronen T, Salminen A. Differential regulation of the Sir2 histone deacetylase gene family by inhibitors of class I and II histone deacetylases. *Cellular and Molecular Life Sciences.* 2003; 60:1990–7. [PubMed: 14523559]
25. Cohen LA, Amin S, Marks PA, Rifkind RA, Desai D, Richon VM. Chemoprevention of carcinogen-induced mammary tumorigenesis by the hybrid polar cytodifferentiation agent, suberanilohydroxamic acid (SAHA). *Anticancer Res.* 1999; 19:4999–5005. [PubMed: 10697502]
26. Cohen LA, Marks PA, Rifkind RA, Amin S, Desai D, Pittman B, et al. Suberoylanilide hydroxamic acid (SAHA), a histone deacetylase inhibitor, suppresses the growth of carcinogen-induced mammary tumors. *Anticancer Res.* 2002; 22:1497–504. [PubMed: 12168829]
27. Thompson HJ, McGinley JN, Rothhammer K, Singh M. Rapid induction of mammary intraductal proliferations, ductal carcinoma in situ and carcinomas by the injection of sexually immature female rats with 1-methyl-1-nitrosourea. *Carcinogenesis.* 1995; 16:2407–11. [PubMed: 7586143]
28. Singh M, McGinley JN, Thompson HJ. A comparison of the histopathology of premalignant and malignant mammary gland lesions induced in sexually immature rats with those occurring in the human. *Lab Invest.* 2000; 80:221–31. [PubMed: 10701691]
29. Thompson HJ, Singh M, McGinley J. Classification of premalignant and malignant lesions developing in the rat mammary gland after injection of sexually immature rats with 1-methyl-1-nitrosourea. *J Mammary Gland Biol Neoplasia.* 2000; 5:201–10. [PubMed: 11149573]
30. Zhu Z, Jiang W, McGinley JN, Prokopczyk B, Richie JP Jr, El BK, et al. Mammary gland density predicts the cancer inhibitory activity of the N-3 to N-6 ratio of dietary fat. *Cancer Prev Res (Phila).* 2011; 4:1675–85. [PubMed: 21813405]
31. Snedecor, GW.; Cochran, WG. *Statistical Methods.* 8. Ames, IA: Iowa State University Press; 1989.
32. Sokal, RR.; Rohlf, FJ. *Biometry the principles and practice of statistics in biological research.* 3. New York: W.H. Freeman; 1995.
33. Huh MH, Critchlow DE, Verducci JS, Kiecolt-Glaser J, Glaser R, Malarkey WB. A symmetric analysis of paired rankings with application to temporal patterns of hormonal concentration. *Biometrics.* 1995; 51:1361–71. [PubMed: 8589228]
34. Collett, D. *Modelling Survival Data in Medical Research.* London: Chapman and Hall; 1994.
35. Morrison, DF. *Multivariate Statistical Methods.* 3. New York: McGraw-Hill Publishing Co; 1990.
36. Sporn MB. Approaches to prevention of epithelial cancer during the preneoplastic period. *Cancer Res.* 1976; 36:2699–702. [PubMed: 1277177]
37. Sporn MB, Dunlop NM, Newton DL, Smith JM. Prevention of chemical carcinogenesis by vitamin A and its synthetic analogs (retinoids). *Fed Proc.* 1976; 35:1332–8. [PubMed: 770206]

38. Li D, Marchenko ND, Moll UM. SAHA shows preferential cytotoxicity in mutant p53 cancer cells by destabilizing mutant p53 through inhibition of the HDAC6-Hsp90 chaperone axis. *Cell Death Differ.* 2011; 18:1904–13. [PubMed: 21637290]
39. Fortson WS, Kayarthodi S, Fujimura Y, Xu H, Matthews R, Grizzle WE, et al. Histone deacetylase inhibitors, valproic acid and trichostatin-A induce apoptosis and affect acetylation status of p53 in ERG-positive prostate cancer cells. *Int J Oncol.* 2011; 39:111–9. [PubMed: 21519790]
40. Uo T, Veenstra TD, Morrison RS. Histone deacetylase inhibitors prevent p53-dependent and p53-independent Bax-mediated neuronal apoptosis through two distinct mechanisms. *J Neurosci.* 2009; 29:2824–32. [PubMed: 19261878]
41. Pollak M. Do cancer cells care if their host is hungry? *Cell Metab.* 2009; 9:401–3. [PubMed: 19416708]
42. Chu F, Chou P, Mirkin BL, Mousa SA, Rebbaa A. Cellular conditioning with trichostatin A enhances the anti-stress response through up-regulation of HDAC4 and down-regulation of the IGF/Akt pathway. *Aging Cell.* 2008; 7:516–25. [PubMed: 18489729]
43. Zhu Z, Jiang W, McGinley JN, Thompson HJ. 2-Deoxyglucose as an energy restriction mimetic agent: effects on mammary carcinogenesis and on mammary tumor cell growth in vitro. *Cancer Res.* 2005; 65:7023–30. [PubMed: 16061689]
44. Efeyan A, Sabatini DM. mTOR and cancer: many loops in one pathway. *Curr Opin Cell Biol.* 2010; 22:169–76. [PubMed: 19945836]
45. Zoncu R, Efeyan A, Sabatini DM. mTOR: from growth signal integration to cancer, diabetes and ageing. *Nat Rev Mol Cell Biol.* 2011; 12:21–35. [PubMed: 21157483]
46. McAuliffe PF, Meric-Bernstam F, Mills GB, Gonzalez-Angulo AM. Deciphering the role of PI3K/Akt/mTOR pathway in breast cancer biology and pathogenesis. *Clin Breast Cancer.* 2010; 10(Suppl 3):S59–S65. [PubMed: 21115423]
47. She QB, Chandralapaty S, Ye Q, Lobo J, Haskell KM, Leander KR, et al. Breast Tumor Cells with *PI3K* Mutation or *HER2* Amplification Are Selectively Addicted to Akt Signaling. *PLoS ONE.* 2008; 3:e3065. [PubMed: 18725974]
48. Keel PK, Baxter MG, Heatherton TF, Joiner TE Jr. A 20-year longitudinal study of body weight, dieting, and eating disorder symptoms. *J Abnorm Psychol.* 2007; 116:422–32. [PubMed: 17516772]



**Figure 1.** Effects of dietary suberoylanilide hydroxamic acid (SAHA) with dietary energy restriction (DER) on body weight gain and the carcinogenic response. (A) Body weight gain. (B) Incidence of palpable mammary cancer. (C) Number of palpable mammary carcinoma number per rat. (D) Tumor weight. For panels A and D, values are means  $\pm$ SEM, n=30 rats/group.

Effect of dietary SAHA and/or dietary energy restriction on HDAC and histone and p53 acetylation in mammary carcinomas

Table 1

Dietary treatment	Ad Lib Ctl	0.1% SAHA	40%DER	40%DER +0.1%SAHA	40%DER +0.1% SAHA-Release	Overall P
p53 <sup>Lys873</sup>	146 ± 8 <sup>a</sup>	170 ± 2 <sup>b</sup>	115 ± 4 <sup>c</sup>	163 ± 6 <sup>ab</sup>	152 ± 6 <sup>ab</sup>	< 0.0001
p53 <sup>Lys733/82</sup>	338 ± 11 <sup>a</sup>	425 ± 8 <sup>b</sup>	300 ± 9 <sup>c</sup>	352 ± 6 <sup>a</sup>	327 ± 5 <sup>ac</sup>	< 0.0001
P53	109 ± 6	119 ± 4	108 ± 2	113 ± 4	108 ± 3	0.286
H2A <sup>Lys9</sup>	310 ± 15 <sup>a</sup>	425 ± 23 <sup>b</sup>	265 ± 10 <sup>a</sup>	316 ± 14 <sup>a</sup>	328 ± 16 <sup>b</sup>	< 0.0001
H2B <sup>Lys5</sup>	245 ± 14 <sup>a</sup>	282 ± 14 <sup>a</sup>	166 ± 11 <sup>b</sup>	194 ± 12 <sup>b</sup>	165 ± 12 <sup>b</sup>	< 0.0001
H3 <sup>Lys9</sup>	138 ± 7 <sup>a</sup>	248 ± 14 <sup>b</sup>	139 ± 8 <sup>a</sup>	147 ± 6 <sup>b</sup>	149 ± 8 <sup>a</sup>	< 0.0001
H4 <sup>Lys8/12/16</sup>	433 ± 22 <sup>a</sup>	719 ± 41 <sup>b</sup>	365 ± 22 <sup>a</sup>	620 ± 40 <sup>b</sup>	439 ± 24 <sup>a</sup>	< 0.0001
SIRT1	82 ± 3 <sup>a</sup>	61 ± 1 <sup>b</sup>	110 ± 5 <sup>c</sup>	90 ± 4 <sup>a</sup>	84 ± 4 <sup>a</sup>	< 0.0001
HDAC1	305 ± 3 <sup>a</sup>	232 ± 3 <sup>b</sup>	298 ± 7 <sup>a</sup>	236 ± 4 <sup>b</sup>	307 ± 4 <sup>a</sup>	< 0.0001

Values are means ± SEM (n=8). Actin-normalized western blot data, which are semi-quantitative estimates of protein expression, were analyzed by Kruskal-Wallis rank test. Different superscripts within the same row are statistically significant among different groups ( $P < 0.05$ ). Ratio, the ratio of phospho-protein (arbitrary units of optical density) to non-phospho-protein (arbitrary units of optical density). Ad Lib, ad libitum; Ctl, control; Ad Lib, ad libitum; Ctl, control; SAHA, suberoylanilide hydroxamic acid; DER, dietary energy restriction. H2A, acetyl-histone H2A; H2B, acetyl-histone H2B; H3, acetyl-histone H3; H4, acetyl-histone H4; HDAC, histone deacetylase; SIRT-1, sirtuin 1.

Effect of dietary SAHA and/or dietary energy restriction on indicators of cell proliferation and apoptosis in mammary carcinomas

Table 2

Dietary treatment	Ad Lib Ctl	0.1% SAHA	40%DER	40%DER +0.1%SAHA	40%DER +0.1% SAHA-Release	Overall P
Cell proliferation						
E2F1	130 ± 5 <sup>a</sup>	115 ± 6 <sup>ac</sup>	85 ± 5 <sup>b</sup>	114 ± 5 <sup>ac</sup>	105 ± 2 <sup>c</sup>	<0.0001
Rb <sup>ser780</sup> ratio	0.90 ± 0.02 <sup>a</sup>	0.84 ± 0.01 <sup>ac</sup>	0.68 ± 0.01 <sup>b</sup>	0.62 ± 0.01 <sup>b</sup>	0.79 ± 0.02 <sup>c</sup>	<0.0001
p21	128 ± 5 <sup>a</sup>	139 ± 3 <sup>ac</sup>	157 ± 3 <sup>bc</sup>	164 ± 5 <sup>b</sup>	144 ± 3 <sup>c</sup>	<0.0001
Apoptosis						
Cleaved caspase-3	111 ± 5 <sup>a</sup>	318 ± 11 <sup>bc</sup>	357 ± 16 <sup>b</sup>	291 ± 10 <sup>c</sup>	110 ± 6 <sup>b</sup>	<0.0001
PARP89	50 ± 2 <sup>a</sup>	59 ± 2 <sup>bc</sup>	57 ± 3 <sup>ac</sup>	66 ± 2 <sup>b</sup>	56 ± 2 <sup>ac</sup>	<0.0001
PARP116	49 ± 3 <sup>a</sup>	41 ± 2 <sup>ab</sup>	41 ± 2 <sup>ab</sup>	38 ± 1 <sup>b</sup>	40 ± 2 <sup>b</sup>	0.006
PARP89/116 ratio	1.02 ± 0.03 <sup>a</sup>	1.43 ± 0.03 <sup>b</sup>	1.40 ± 0.03 <sup>b</sup>	1.74 ± 0.03 <sup>c</sup>	1.42 ± 0.03 <sup>b</sup>	<0.0001
Apaf-1	152 ± 4 <sup>a</sup>	202 ± 7 <sup>b</sup>	230 ± 7 <sup>c</sup>	203 ± 6 <sup>b</sup>	185 ± 7 <sup>b</sup>	<0.0001
Bax	72 ± 2	90 ± 3	88 ± 3	110 ± 4	94 ± 3	0.258
Bcl-2	216 ± 5	163 ± 3	161 ± 3	114 ± 3	154 ± 4	0.382
Bax/Bcl-2 ratio	0.33 ± 0.01 <sup>a</sup>	0.55 ± 0.02 <sup>b</sup>	0.55 ± 0.02 <sup>b</sup>	0.97 ± 0.04 <sup>c</sup>	0.61 ± 0.02 <sup>b</sup>	<0.0001
XIAP	1755 ± 29 <sup>a</sup>	1485 ± 24 <sup>b</sup>	1405 ± 38 <sup>b</sup>	1642 ± 30 <sup>a</sup>	1741 ± 30 <sup>a</sup>	<0.0001

Values are means ± SEM (n=8). Actin-normalized western blot data, which are semi-quantitative estimates of protein expression, were analyzed by Kruskal-Wallis rank test. Different superscripts within the same row are statistically significant among different groups ( $P < 0.05$ ). Ratio, the ratio of phospho-protein (arbitrary units of optical density) to non-phospho-protein (arbitrary units of optical density). Ad Lib, ad libitum; Ctl, control; Ad Lib, ad libitum; Ctl, control; SAHA, suberoylanilide hydroxamic acid; DER, dietary energy restriction. Apaf-1, apoptosis protease-activating factor-1; Bax, Bcl (B cell lymphoma)-associated X; Bcl, B cell leukemia oncogene; E2F1, transcription factor family including E2F- and DP-like subunits; PARP, Poly (ADP-ribose) polymerase; Retinoblastoma, Rb; XIAP, X-linked inhibitor of apoptosis protein.



Effect of dietary SAHA and/or dietary energy restriction on regulatory nodes that affect the mTOR-related signaling in mammary carcinomas

**Table 3**

Dietary treatment	Ad Lib Ctl	0.1% SAHA	40%DER	40%DER +0.1%SAHA	40%DER +0.1% SAHA-Release	Overall P
IGF-1R	121 ± 5 <sup>a</sup>	105 ± 6 <sup>ab</sup>	93 ± 7 <sup>b</sup>	95 ± 6 <sup>bc</sup>	117 ± 5 <sup>ac</sup>	<0.0001
PI3Kp110	90 ± 5 <sup>a</sup>	84 ± 3 <sup>a</sup>	49 ± 3 <sup>b</sup>	71 ± 5 <sup>c</sup>	86 ± 6 <sup>a</sup>	<0.0001
Akt <sup>Ser473</sup> ratio	1.73 ± 0.03 <sup>a</sup>	1.55 ± 0.01 <sup>b</sup>	1.39 ± 0.02 <sup>c</sup>	1.30 ± 0.02 <sup>c</sup>	1.61 ± 0.02 <sup>b</sup>	<0.0001
AMPK <sup>Thr172</sup> ratio	0.106 ± 0.006 <sup>a</sup>	0.182 ± 0.004 <sup>b</sup>	0.203 ± 0.003 <sup>c</sup>	0.144 ± 0.004 <sup>d</sup>	0.116 ± 0.005 <sup>a</sup>	<0.0001
ACC <sup>Ser79</sup> ratio	1.62 ± 0.04 <sup>a</sup>	1.91 ± 0.04 <sup>b</sup>	2.48 ± 0.06 <sup>c</sup>	2.10 ± 0.08 <sup>b</sup>	1.50 ± 0.04 <sup>a</sup>	<0.0001
Raptor <sup>Ser792</sup> ratio	0.131 ± 0.002 <sup>a</sup>	0.160 ± 0.004 <sup>bc</sup>	0.168 ± 0.006 <sup>b</sup>	0.153 ± 0.002 <sup>ac</sup>	0.141 ± 0.002 <sup>a</sup>	<0.0001
mTOR <sup>Ser2448</sup> ratio	0.65 ± 0.01 <sup>a</sup>	0.58 ± 0.04 <sup>a</sup>	0.27 ± 0.03 <sup>b</sup>	0.44 ± 0.03 <sup>c</sup>	0.59 ± 0.04 <sup>a</sup>	<0.0001
P70S6K <sup>Thr389</sup> ratio	1.51 ± 0.04 <sup>a</sup>	1.26 ± 0.03 <sup>b</sup>	0.83 ± 0.05 <sup>c</sup>	0.98 ± 0.04 <sup>c</sup>	1.24 ± 0.06 <sup>b</sup>	<0.0001
4EBP1 <sup>Thr37/46</sup> ratio	1.38 ± 0.04 <sup>a</sup>	1.03 ± 0.06 <sup>b</sup>	0.95 ± 0.04 <sup>b</sup>	0.97 ± 0.04 <sup>b</sup>	1.23 ± 0.06 <sup>a</sup>	<0.0001

Values are means ± SEM (n=8). Actin-normalized western blot data, which are semi-quantitative estimates of protein expression, were analyzed by Kruskal-Wallis rank test. Different superscripts within the same row are statistically significant among different groups ( $P < 0.05$ ). Ratio, the ratio of phospho-protein (arbitrary units of optical density) to non-phospho-protein (arbitrary units of optical density). Ad Lib, ad libitum; Ctl, control; Ad Lib, ad libitum; SAHA, suberoylanilide hydroxamic acid; DER, dietary energy restriction. ACC, acetyl-CoA carboxylase; Akt, protein kinase B; AMPK, adenosine monophosphate-activated protein kinase; 4EBP1, eukaryotic translation initiation factor 4E-binding protein 1; Hif-1 $\alpha$ , hypoxia-inducible factor-1 $\alpha$ ; IGF-1R, insulin growth factor 1 receptor; mTOR, mammalian target of rapamycin; P70S6K, 70-kDa ribosomal protein S6 kinase; PI3Kp110, Phosphoinositide 3-kinase p110; Raptor, regulatory associated protein of mTOR.

**Table 4**

Effect of dietary SAHA and/or dietary energy restriction on plasma analytes

Dietary treatment	Ad Lib Ctl	0.1%SAHA	40%DER	40%DER +0.1%SAHA	40%DER +0.1%SAHA-Release	Overall P
IGF-1 (ng/ml)	370 ± 9 <sup>ab</sup>	333 ± 8 <sup>a</sup>	225 ± 9 <sup>c</sup>	248 ± 6 <sup>c</sup>	388 ± 17 <sup>b</sup>	<0.0001
IGFBP-3 (ng/ml)	122 ± 4 <sup>ab</sup>	120 ± 4 <sup>ab</sup>	113 ± 5 <sup>a</sup>	126 ± 3 <sup>ab</sup>	135 ± 5 <sup>b</sup>	0.0092
IGF-1/IGFBP-3	3.06 ± 0.05 <sup>a</sup>	2.83 ± 0.08 <sup>a</sup>	2.01 ± 0.05 <sup>b</sup>	2.00 ± 0.06 <sup>b</sup>	2.91 ± 0.11 <sup>a</sup>	<0.0001
Insulin (pg/ml)	1295 ± 40 <sup>a</sup>	1286 ± 59 <sup>a</sup>	997 ± 21 <sup>b</sup>	1060 ± 38 <sup>a</sup>	1217 ± 55 <sup>a</sup>	<0.0001
Glucose (mg/dl)	148 ± 4	141 ± 5	127 ± 5	133 ± 7	134 ± 7	0.1129
Adiponectin (µg/ml)	17.4 ± 0.8 <sup>a</sup>	26.3 ± 0.9 <sup>b</sup>	21.3 ± 0.8 <sup>c</sup>	24.9 ± 0.9 <sup>b</sup>	20.2 ± 0.7 <sup>ac</sup>	0.019
Leptin (pg/ml)	2011 ± 56 <sup>a</sup>	2058 ± 63 <sup>a</sup>	1113 ± 37 <sup>b</sup>	1355 ± 69 <sup>c</sup>	1879 ± 55 <sup>a</sup>	<0.0001

Values are means ± SEM (n=30). Data were analyzed by one-way ANOVA with Bonferroni Post Hoc Test. Values within a row with different superscripts are statistically different from each other ( $P < 0.05$ ). Ad Lib, ad libitum; Ctl, control; Ad Lib, ad libitum; Ctl, control; SAHA, suberoylanilide hydroxamic acid; DER, dietary energy restriction.