

Review



CrossMark
click for updates

Cite this article: Hejnal A, Lowe CJ. 2015 Embracing the comparative approach: how robust phylogenies and broader developmental sampling impacts the understanding of nervous system evolution. *Phil. Trans. R. Soc. B* **370**: 20150045.
<http://dx.doi.org/10.1098/rstb.2015.0045>

Accepted: 24 September 2015

One contribution of 16 to a discussion meeting issue 'Origin and evolution of the nervous system'.

Subject Areas:

developmental biology, evolution, neuroscience, taxonomy and systematics

Keywords:

animal phylogeny, homology test, nervous system evolution, brain, longitudinal nerves, phylogenetic systematics

Authors for correspondence:

Andreas Hejnal
e-mail: andreas.hejnal@uib.no
Christopher J. Lowe
e-mail: clove@stanford.edu

Embracing the comparative approach: how robust phylogenies and broader developmental sampling impacts the understanding of nervous system evolution

Andreas Hejnal¹ and Christopher J. Lowe²

¹Sars International Centre for Marine Molecular Biology, University of Bergen, Thormøhlensgate 55, Bergen 5008, Norway

²Hopkins Marine Station, Department of Biology, Stanford University, 120 Oceanview Blvd., Pacific Grove, CA 93950, USA

AH, 0000-0003-2196-8507; CJL, 0000-0002-7789-8643

Molecular biology has provided a rich dataset to develop hypotheses of nervous system evolution. The startling patterning similarities between distantly related animals during the development of their central nervous system (CNS) have resulted in the hypothesis that a CNS with a single centralized medullary cord and a partitioned brain is homologous across bilaterians. However, the ability to precisely reconstruct ancestral neural architectures from molecular genetic information requires that these gene networks specifically map with particular neural anatomies. A growing body of literature representing the development of a wider range of metazoan neural architectures demonstrates that patterning gene network complexity is maintained in animals with more modest levels of neural complexity. Furthermore, a robust phylogenetic framework that provides the basis for testing the congruence of these homology hypotheses has been lacking since the advent of the field of 'evo-devo'. Recent progress in molecular phylogenetics is refining the necessary framework to test previous homology statements that span large evolutionary distances. In this review, we describe recent advances in animal phylogeny and exemplify for two neural characters—the partitioned brain of arthropods and the ventral centralized nerve cords of annelids—a test for congruence using this framework. The sequential sister taxa at the base of Ecdysozoa and Spiralia comprise small, interstitial groups. This topology is not consistent with the hypothesis of homology of tripartitioned brain of arthropods and vertebrates as well as the ventral arthropod and rope-like ladder nervous system of annelids. There can be exquisite conservation of gene regulatory networks between distantly related groups with contrasting levels of nervous system centralization and complexity. Consequently, the utility of molecular characters to reconstruct ancestral neural organization in deep time is limited.

1. Morphology, molecules and early nervous system evolution: the early years

The advent of molecular biology and developmental genetic tools has ushered in a new set of comparative data with great potential to impact our understanding of body plan evolution. Long-standing questions about the evolution and origins of animals had been the exclusive realm of comparative morphologists and palaeontologists. Many competing hypotheses had reached an impasse owing to the problems of establishing unambiguous anatomical homologies based on comparative morphology [1]. The amazing diversity of fossils from a variety of

deposits with exquisite soft body preservation has led to unprecedented insights into the organization of body plans of animals, close to the origin of the bilaterians [2]. However, molecular clock data are largely in agreement that the origin of the Bilateria predates the Cambrian by a substantial margin [3–5], indicating that there remains significant uncertainty about the evolutionary origins of bilaterians [6,7]. The identification of stem groups remains a contentious issue, and the majority of fossils at the base of the Cambrian are already attributable to crown groups [2,8]. The strange macrofossils from the Ediacaran are believed by some to represent stem bilaterians, whereas others believe them to be representatives of a now extinct lineage of early animals [9]. Early trace fossils are all that remain of small worm-like animals long before the Cambrian, which likely were bilaterians, but the morphology of the burrows leaves plenty of ambiguity to the level of complexity of the animals that left them [10–12].

Molecular biology has provided a rich new set of data to address classical hypotheses of phylogenetic relationships and the deep ancestry of bilaterians. Some of the most compelling recent comparative datasets have come from developmental biology related to ectodermal patterning, and particularly to the patterning of the nervous system [13–15]. The original observations began with the similarities in the expression of *Hox* genes in collinear domains during centralized nervous system development in mouse and fly [16], but went on to reveal further similarities in anterior patterning: genes such as *otx* and *pax6* and a growing list of transcriptional factors and signalling ligands [17–23]. Even 30 years later, the original observation that the CNS patterning of mouse and *Drosophila* share fundamental early patterning similarities is fascinating. Subsequent close examination of a broad range of transcription factors has revealed very close patterning similarities between arthropods and chordates in the patterning of the CNS. This extends not only to structural similarities but is also backed up by functional studies; in mouse knockdowns of *otx*, the resulting mutant animals are entirely lacking a forebrain and midbrain [24,25]. This phenotype was partially rescued by the *Drosophila* homologue *otd*, further building a case for similarities in the molecular construction of a CNS in both flies and mouse [26,27]. As evidence grew from studies of the anterior–posterior (A/P) axis, speculation about the molecular players that define the position of the CNS in both flies and vertebrates began to further build a compelling case of a conserved suite of genes involved in molecular patterning of the nervous system [13,19,20]. Again in flies and vertebrates, similarities in the mechanisms that define the position of the CNS on either the dorsal or ventral side of the body plan, respectively, revealed some fundamental patterning similarities: bone morphogenic protein (BMP)/chordin signalling is involved in defining the region of the ectoderm that will give rise to the CNS [28]. In both cases, broad activation of BMP signalling represses the formation of a CNS and localized expression of BMP antagonists is required to represses the antineuralizing effects of BMP, defining the region along the dorsoventral axis that the CNS will form [29,30]. In flies, the region is on the ventral side, and on the dorsal side in chordates [28,31,32]. This inverted molecular patterning mechanism that defines the formation of the neuroectoderm in both flies and vertebrates resulted in the re-emergence of a classical hypothesis of axis inversion originally proposed by Geoffroy Saint-Hilaire in 1822 [33] and championed by Anton Dohrn [34]. This hypothesis proposed that the dorsoventral axis of vertebrates and arthropods are essentially the same if arthropods are

flipped over on their back; all the organ systems line up; ventral heart, dorsal nerve cord and dorsal axial musculature [28,31,35]. Finally, further in the dorsoventral dimension, later patterning similarities in the mediolateral patterning programme of the neural plate and ventral nerve cord were revealed [36,37].

The combined observations of molecular patterning similarities in both the dorsoventral and A/P axes during the formation of the CNS of both arthropods and chordates have led to the prevailing hypothesis that the ventrally centralized nerve cords of arthropods may be homologous with the dorsally centralized medullary cord of vertebrates, and thus present as such in the last common ancestor of Bilateria (in ‘evo-devo’-jargon often referred to as ‘Urbilaterian’) [13,17,28]. Further support for this hypothesis has come from a series of elegant papers from Detlev Arendt’s laboratory from the spiralian lineage [37,38]. *Platynereis dumerilii* is an errant polychaete annelid that has become the most established model species to represent spiralian [39]. Particularly striking is the close similarities in the extent of D/V mediolateral patterning of the annelid nervous system with that of vertebrates, and the vertebrate pallium [36,37]. These results suggest that similarities in molecular patterning are strongly connected to the morphological outcome and to the cell type composition of the neural organ systems. The interwoven complexity of the molecular patterning systems with the elaborated neural structures is highly suggestive for a common origin of both and is in favour of a single evolution of a complex nervous system in the stem bilaterian lineage.

A morphologically and molecularly tri-partitioned brain connected to a ventral CNS present in the last common ancestor of protostomes and deuterostomes also implies secondary reduction in animal lineages that have a much simpler organization of their nervous system—for example, anterior basiepidermal nerve rings and lateral neurite bundles that lack perikarya [13,14].

It is extremely challenging to distinguish between hypotheses of homology and homoplasy in structures that are only present in distantly related species such as insects, annelids and vertebrates and are only superficially similar. When we use molecular genetics as a suite of characters to test hypotheses of CNS homology, it is imperative that we have both a broad understanding of the role of molecular genetics in the development of contrasting neural architectures, a detailed analysis of structural correspondence and a robust phylogenetic framework to map neural and molecular characters. If loss of nervous system complexity is common in many lineages, then are the highly conserved molecular patterning systems also secondarily simplified to give rise to the less complex neural architectures? Can we detect traces of the hypothesized ancestral complex neural structures in secondarily simplified nervous systems? Alternatively, is it possible that morphologically complex neural architectures such as condensed nerve cords and partitioned brains are fascinating cases of homoplasies driven as response to similar ecological and life-history selective pressures?

The answers to these questions are slowly beginning to emerge as lineages that lack a complex nervous system are being studied using molecular methods, indicating that there is not a one-to-one correspondence between expression similarities and morphological structure. Furthermore, new phylogenomic approaches provide a more robust phylogenetic framework that helps discriminate between homology and homoplasy of structures that have been carefully analysed with advanced morphological and molecular methods.

In this review, we highlight the importance of the comparative approach and recent findings that provide an opportunity for a critical appraisal of previous homology statements. In addition, we describe how recent progress in molecular phylogenies facilitates testing of homology hypotheses and call into question our ability to precisely reconstruct ancestral neural anatomies from the sparse phylogenetic sampling of molecular genetic data.

2. Nervous system diversity and its molecular patterning

Any reconstruction of the deep ancestry of morphology requires a comprehensive comparative approach [40,41]. In order to have confidence in our abilities to reconstruct ancestral morphologies in deep time from molecular genetic data, we have to have a clear understanding of (i) the relationship between conserved gene regulatory networks and the wide range of morphologies they regulate; and (ii) a clear understanding of the phylogenetic relationships between the species used to generate molecular genetic data.

Currently, our understanding of the relationship between conserved developmental genetic networks and the evolution of neural architectures is based on a very biased sampling of bilaterian neural architectures, represented by highly centralized and complex CNS organization [13–15]. These animals are characterized by complex life histories and strongly cephalized sensory structures, integrated with complex motor outputs, and only represent a fraction of the extraordinary diversity of bilaterian nervous systems. In order to evaluate fully the utility of molecular approaches for reconstructing ancestral neural architectures, it is essential to investigate the role of these conserved networks during the development of a wider diversity of neural architectures of bilaterians [42]. Bilaterian nervous system organization spans the gamut from a broad basiepithelial plexus with only subtle condensations in the case of xenoturbellids and nemertodermatids [43,44], to vertebrates and arthropods with strongly partitioned CNS and peripheral nervous system (PNS) [45]. However, there are many groups with elements of both a dispersed epithelial plexus and centralized elements in the form of neurite bundles and anterior brains or ganglia [1,14,46]. Are these nervous systems patterned by the same conserved gene regulatory networks, exhibiting the same exquisite relative expression domains along both dorsoventral and A/P axes, or are the simpler neural architectures defined by a degenerate form of the gene regulatory programme?

3. A case study: the molecular genetics of A/P axis patterning in hemichordates

Hemichordates are the sistergroup to echinoderms and this clade, together with the chordates, form the Deuterostomia [47–50]. The two clades of hemichordates are the enteropneusts and pterobranchs [48]. The majority of information on patterning and neural organization comes from the enteropneusts, which are divided into two main lineages, one with direct development and the other with indirect development and a long-lived larval phase (figure 1a). The organization of the enteropneust nervous system is characterized by both centralized elements and a pervasive basiepithelial plexus [52–55] (figure 1b). The two cords have been a source of speculation about their potential

homologies with the dorsal nervous system in chordates [54,56,57]. The dorsal cord extends from the collar down to the anus. In its most anterior extent, in the collar, the cord is internalized by a morphogenetic process that resembles chordate neurulation [53,54,57–59]. The remaining length of the cord is superficial and an extension of the plexus [52]. The dorsal cord connects to a ventral cord via a nerve ring in the posterior collar (figure 1b). The ventral cord extends posteriorly from the collar nerve ring down the length of the trunk. The basiepithelial nerve plexus is pervasive in the proboscis and collar, but is most prominent in at the base of the proboscis (figure 1b). The plexus extends throughout the animal, but the number of cell bodies drops off significantly in the trunk [52,53].

The organization of the nervous system reflects the life history of the animals, which burrow in sand and mud and feed by both detritus and filter feeding. A brain is absent and there are no centralized sensory organs. The nervous system is a good example of a more modest organization to compare with the highly centralized examples from arthropods and chordates. A series of molecular genetic studies have now been carried out, mainly on the direct-developing species *Saccoglossus kowalevskii* [60]. The most detailed characterization has been in the determination of the patterning of the A/P axis, and largely in relation to the patterning of the vertebrate neuraxis (figure 1c) [51,61]. Despite the major differences in the organization of their nervous systems, the relative expression domains of conserved transcription factors are well conserved between vertebrates and hemichordates [62]. Transcription factors that pattern the forebrain of chordates such as retinal homeobox (*rx*), *six3*, *foxG*, *nk2-1* and *dlx* are expressed broadly in the proboscis ectoderm of hemichordates reflecting the organization of the basiepithelial neural plexus (figure 1c). Markers of midbrain such as *emx*, *otx*, *Pax6* and *lim1/5* are largely localized in the same circumferential epithelial domain, but further posteriorly into the collar ectoderm, and markers of hindbrain *engrailed* (*en*) and *gbx* are localized in the anterior trunk (figure 1c). *Hox* genes are first localized in the anterior trunk down into the posterior embryonic domain, again expressed in broad ectodermal domains in early embryonic stages, and then in later juvenile stages some *Hox* genes become localized to the nerve cords [63,64]. In summary, the relative expression domains down the A/P axis of key regulators of the neuraxis in vertebrates is matched in almost perfect register by the expression of their orthologues in hemichordates, despite the fundamental differences in the organization of the nervous system [61]. The similarities are not limited to many of the basic transcriptional similarities shared broadly with protostomes, they also share the localized ectodermal signalling centres that define the CNS of all vertebrates; the anterior neural ridge (ANR), the Zona limitans Intrathalamica and the isthmus organizer [51,65]. These developmental modules in the CNS are defined by secreted ligands and were thought to be innovations of vertebrates, associated with the assembly of a more complex nervous system. However, their characterization in hemichordates suggests that they form part of the developmental ectodermal scaffold that originated deep in deuterostome evolutionary history—or earlier—and have been modified along each lineage to pattern an array of contrasting morphologies shaped by the specific life histories of the radically different body plans of the deuterostome subtaxa [61]. It is likely that these networks also pattern not only the CNS but the ectoderm more generally, as in hemichordates, echinoderms and chordates, these genes are expressed not only in the nervous

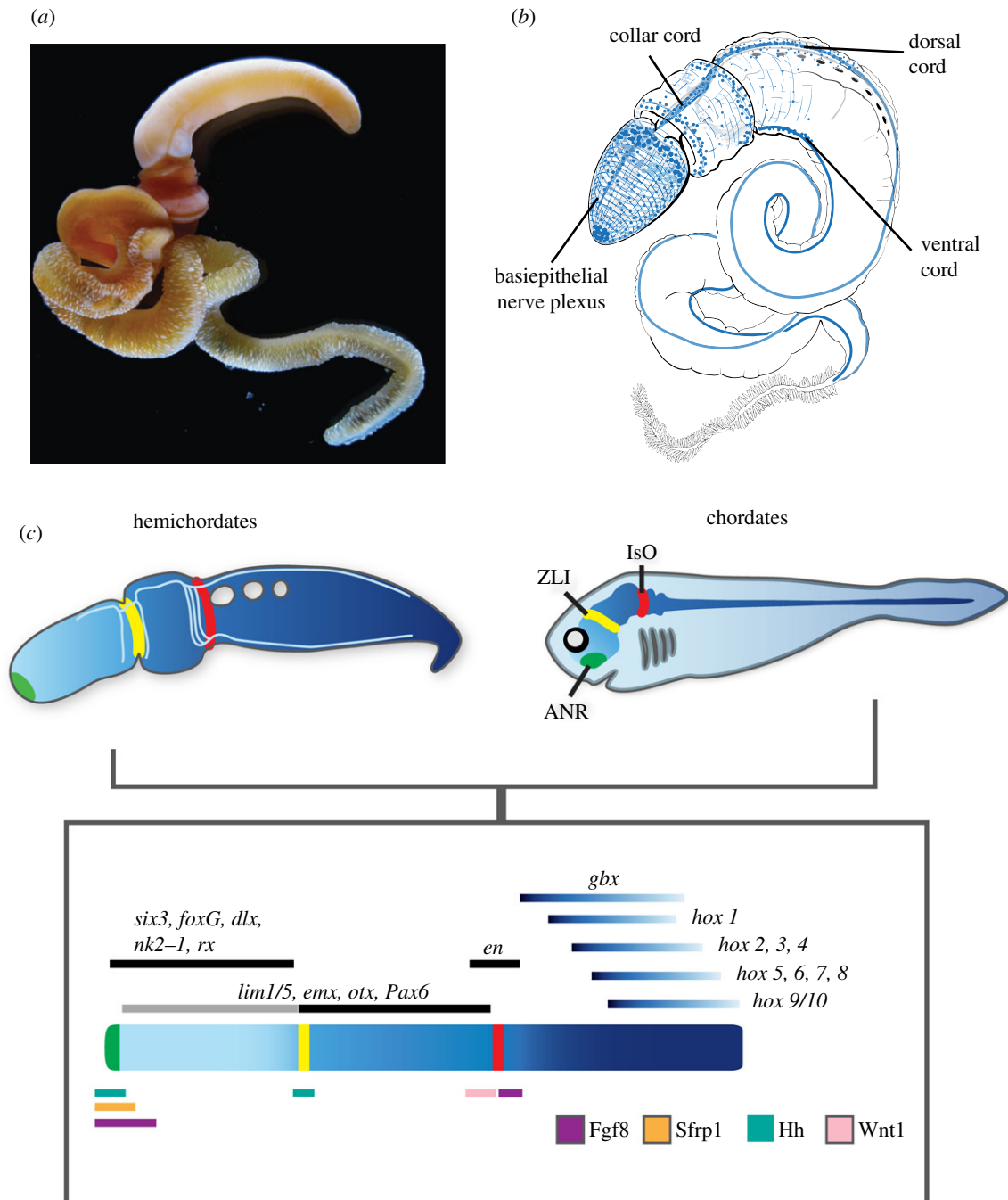


Figure 1. Hemichordate nervous system anatomy and conserved developmental programmes between chordates and enteropneusts. (a) An adult enteropneust *Saccoglossus kowalevskii*. (b) Schematic of the organization of the nervous system of an adult enteropneust showing a broad epithelial plexus and two nerve cords; one dorsal and one ventral. (c) Schematic of the developmental genetic similarities between enteropneusts and vertebrates during early A/P ectodermal patterning. Blue shading represents similarities in the regional expression of orthologous transcription factors between the phyla, and green, yellow and red stripes represent homologous genetic programmes for local signalling centres: ANR (anterior neural ridge); ZLI (zona limitans intrathalmica); and IsO (isthmus organizer), respectively. *en*, *engrailed*. Figure modified from Pani *et al.* [51].

system, but throughout the epidermis [13,66,67]. So despite the contrasting neural architectures of deuterostomes, the same suite of genes is involved in patterning in the ectoderm. This suggests that over macroevolutionary time frames, the A/P gene regulatory network has been quite flexible in patterning deuterostome ectodermal derivatives. The disparity of the nervous system architectures in the deuterostome clades Echinodermata, Hemichordata, Chordata (and possibly Xenacoelomorpha [68]), and the lack of a clear understanding of the ancestral nervous system architectures of the outgroups Protostomia and Cnidaria, make it difficult to draw conclusions about the ancestral morphology of the ground pattern of the deuterostome nervous system. Without a comprehensive

characterization of the role of these regulatory networks and their connection to the wide diversity of neural organization more broadly in bilaterian groups, our ability to extrapolate ancestral neural architecture from ancestral patterning networks is speculative at best [15,51,62,66].

4. Progress in inferring molecular phylogenies provides an emerging phylogenetic framework

Fundamental for comparative biology is a phylogenetic framework on which characters can be mapped and that allows the

determination of their distribution and thus the polarity of characters (direction of evolutionary change) [40,41,69]. Furthermore, a reliable phylogeny is fundamental for the congruence test of homology hypotheses that allows us to discriminate between the homology or homoplasy of a character (see below and also [2]).

The homologizations of bilaterian morphological characters over long evolutionary distances, such as segmentation, partitioned brains and nerve cords, have suffered from the absence of a solid phylogenetic framework to rigorously test them. Continued improvements over the past 30 years have resulted in more reliable molecular phylogenies, and the remaining unsolved questions comprise a lower number of alternative hypotheses that can be now specifically tested [6].

The attempts for a systematization of animals have seen dramatic changes in the approach since the historical Aristotle's 'Historia Animalium' and Linneus' 'Systema Naturae'. Before Willi Hennig's revolutionary 'Phylogenetic systematics' [69,70], taxonomic relationships were dependent on the intuition of the researcher, and were often followed by a subjective series from simple to complex and estimations about the likelihood of the evolution of morphological characters. Furthermore, evaluations of the importance of selected characters such as coeloms ('Coelomata'), segmentation ('Articulata') and development (Protostomia and Deuterostomia) for the reconstruction of the relatedness of animals resulted in different—often incongruent—topologies.

Willi Hennig provided the scientific foundation for reconstructing evolutionary relationships between organisms and thus the basis for all phylogenetic reconstructions since. However, the methods for reconstructing animal relationships themselves have undergone changes [71]. Initially, morphology delivered the only basis for phylogenetic inferences [72]. Advances in methodology allowed more detailed descriptions of morphology, but tree building seemed to have reached an impasse, with often equally likely competing hypotheses. With the advent of molecular sequencing, it became clear that protein and nucleic acid sequences contain evolutionary information [73]. A new source of data became available for phylogenetic inference that is largely independent of morphology. After overcoming the first hurdles [74–76], the ribosomal RNA molecules 18S and 28S changed the view of animal relationships [77,78]. The seminal work by Aguinaldo *et al.* [79] and Halanych *et al.* [80] gave surprising assemblages: nematodes grouped together with arthropods and lophophorate taxa allied with Annelida and Mollusca.

These 'new' animal relationships accompanied the rise of 'Evo-Devo' as a new discipline [81]. The discovery of similar gene expression in similar organ systems, together with the establishment of the large animal clades Ecdysozoa, Lophotrochozoa and Deuterostomia, delivered promising new data to test long-standing speculations about origins of major organ systems and reconstructions of the last common ancestor of arthropods and vertebrates [82,83]. Molecular biology seemed to provide answers to many debated zoological problems. In order to further test the proposed reconstruction of a complex last common ancestor of arthropods and mouse—the so-called 'Urbilaterian'—further species were selected to more broadly represent bilaterians: the annelid *P. dumerilii* was chosen not only because it was an established laboratory animal [84] representing Lophotrochozoa, but also because it was proposed to represent the best proxy for the hypothetical 'Urbilaterian' [39]. The body plan of this errant

polychaete is defined by segmentation, appendage-like structures (parapodia) and a condensed ventral nervous system with a brain. The presence of a biphasic life cycle with a ciliated larva that develops through the spiral cleavage programme was—at least by some researchers—claimed to be ancestral for the protostomes [85]. At that time, the internal phylogeny of the Lophotrochozoa¹ remained polytomic and thus did not exclude the possibility that annelids are representatives of early branching lophotrochozoans, which could indeed hint that annelids show multiple ancestral characters [77,81]. The claim that annelids share many characters with the bilaterian stem species implies also the secondary simplification of groups such as gastrotrichs, platyhelminthes, gnathiferans [81].

The field of molecular phylogenetics continuously improved its methodology and increased the taxon sampling [86]. Increased taxon sampling of 18S and 28S molecules repositioned obscure taxa such as chaetognaths and acoels to key positions of the metazoan tree. Acocels have been proposed to be the sister group to bilaterians, replacing cnidarians as the most informative bilaterian outgroup [87,88], breaking up the simultaneous appearance of the bilaterian characters nephridia, coeloms, mesoderm, CNS, heart and the one-way gut into an evolutionary sequence, thus challenging some hypothetical scenarios of bilaterian evolution such as the enterocoely hypothesis [89–92]. Additionally, the placement of direct-developing, deuterostomic and unsegmented chaetognaths as sister group of all remaining protostomes questions the proposed homology of segmentation and larvae across Bilateria [93,94].

Further development of computational algorithms and advances in sequencing technologies transformed molecular phylogenetics, from the targeted PCR approach isolating a couple of molecular loci, into phylogenomics using expressed sequence tags and transcriptomes to build matrices that are built upon 1000 different molecular loci [95,96]. This approach led to improved resolution in many parts of the animal tree of life [3]. The chordate ancestor 'proxy' Branchiostoma was displaced from sister group status to the vertebrates by urochordates [97] and for the first time, long-standing morphological groupings such as the molluscs, annelids and platyhelminths received molecular support [98].

Despite problems associated with the analysis of large datasets such as systematic errors, paralogy issues and variable informativeness of genes [99], progress has been made in nearly all parts of the tree of life since the first large-scale phylogenomic analyses of animal relationships were published [98]. Further development of the methodology and larger taxon sampling demonstrate the potential to resolve the position of even the most problematic taxa and to address long-branch attraction (LBA) artefacts caused by fast-evolving sequences and rapid radiations [100–102]. This has led to very surprising arrangements in the animal tree of life, such as the sister-group relationship of ctenophores to all remaining animals [98,102–105] and for the first time provides insights into the relationships within the Ecdysozoa and Spiralia (with Lophotrochozoa rendered as subtaxon of Spiralia) [100,106,107].

Although some questions still remain open—e.g. the placement of the Acoela and the internal phylogeny of Lophotrochozoa—an emerging phylogenetic framework is allowing zoologists and evolutionary biologists to map morphological and molecular characters to test long-standing

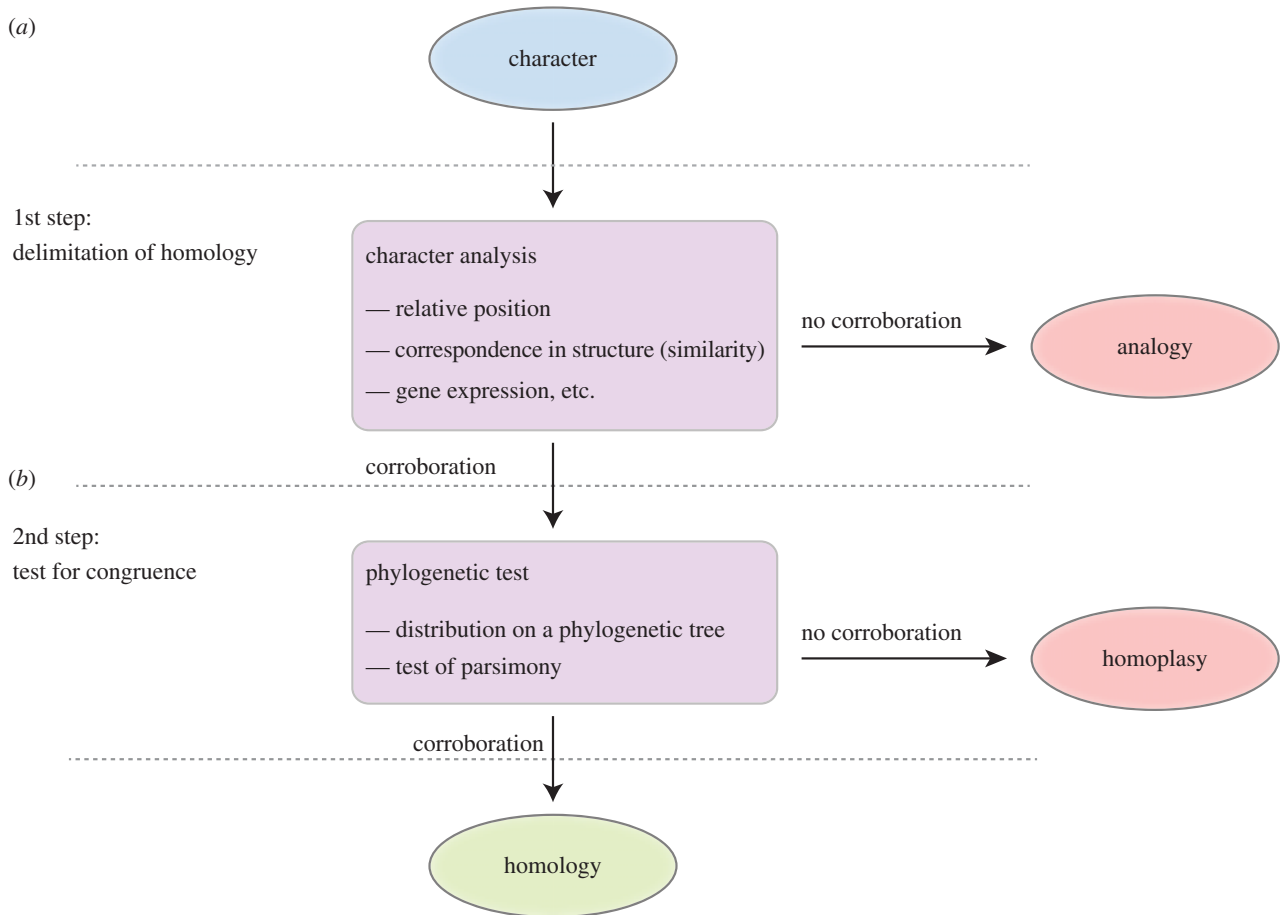


Figure 2. General procedure for testing homology hypotheses. The test of homology is a two-step process in which the homology hypothesis has to pass two definite tests. After the definition of the character, the character is analysed according to criteria such as relative position, correspondence in structure, similarity (but see [112,113]) and ontogeny (*a*) (but see [114–116]). When corroborated, this leads to the formulation of the ‘primary homology’ [117] or ‘potential homology’ [118] hypothesis, otherwise the character is an analogy [113]. In a second step (*b*), the homology hypothesis is tested for congruence using a phylogenetic (‘cladistic’) test for parsimony on the basis of a phylogeny. If the homology hypothesis fails this test, it is a homoplasy. Drawing modified after Rieppel [40] and Richter [119].

hypotheses of animal evolution that challenge the prevailing views on the early evolutionary origins of bilaterian animals [6]. It is an exciting time to be a comparative biologist, and it is clear that the improved resolution of animal relationships gained from phylogenomics will help resolve many of the current debates of morphologists and evo-devo researchers, and also open up new horizons for future research.

5. The phylogenetic framework and testing hypotheses of homology

Increased taxon sampling not only helps to resolve animal relationships, but also leads to a better understanding of the evolution of morphology and its underlying molecular mechanisms. The extension of developmental studies to representatives of taxa at key phylogenetic positions has led to fundamental insights into the role of transcription factors and signalling pathways in the evolution of morphology, as well as insights into genome evolution. However, comparisons of characters over large evolutionary distances, with sparse phylogenetic sampling and the lack of a phylogenetic framework, can only lead to very vague hypotheses about homology [108–111].

Formulation and testing of homology hypotheses of morphological and other characters are an essential part of

comparative biology [40] and start with the selection of the character and the collection of indicators for their potential (or ‘primary’) homology (figure 2*a*). This process, also referred to as delimitation of homology, uses different criteria such as the distinct position with respect to other body regions, and correspondence in structure [117,120,121] (‘similarity’, but see [122]). Gene expression and gene regulatory network analysis falls into the ‘similarity’ criterion.

Remane’s homology criteria contain, beside position and similarity, also genealogical origin (ontogeny) [123; see also 124]. Ontogeny as a criterion for homology was highlighted as problematic as early as 1894 by Wilson [114] based on the fact that different developmental pathways can still produce homologous structures [115,116].

After the identification of potential homologies, these have to be tested in a second step for congruence within the context of a phylogenetic framework [40,112,119–122,125] (figure 2*b*). It is not sufficient to accumulate data about the similarity, position, and gene expression patterns of a character to claim homology, without a test for congruence that follows in a second step. This step is essential to discriminate between homology and homoplasy of a character. Only after legitimation using a parsimony test based on a phylogenetic tree, can the potential or ‘primary’ homology become a ‘secondary’ homology [117]. De Pinna [117] brings up the example of the bat wing and bird wing—which are common textbook examples

for illustrating concepts of homology because they are homologous as vertebrate forelimbs, but homoplastic as ‘wings’—and asks the question; what would we conclude if bats were the sister group to birds? We would probably conclude that wings are also homologous and reconstruct a wing in their last common ancestor, including the underlying gene regulatory network.

It should be clear that the test for congruence is an essential second step—after the careful structural comparison—to avoid premature homology statements. It is largely owing to the uncertainty in metazoan phylogeny that nearly all ‘Evo-Devo’ homology hypotheses that homologize structures across large evolutionary distances based on shared molecular patterning could never be tested for congruence.

The recent inferences of the internal topologies of Ecdysozoa and Spiralia provide a framework on which some homology hypotheses can be tested for congruence. We will focus on two hotly debated features of nervous systems—the tripartite brain and the ventral centralization of longitudinal nerves.

(a) Increased resolution of the internal relationships of the Ecdysozoa and the case of the ancestry of the ‘tripartite brain’

As discussed previously, comparisons of the molecular patterning of the anterior brains of *Drosophila* and vertebrates led to the discovery that homologous genes are expressed in a very similar fashion along the A/P axis of the fly brain and the brain of the mouse [18–20,22,23]. Intriguingly, the gene expression patterns of *otx*, *emx* and *engrailed* (*en*) correlate—at least to some extent—with the morphological subdivisions of the brain regions of both species [18,23]: the vertebrate brain is subdivided into fore-, mid- and hindbrain and the brain of *Drosophila* is tripartite as well, subdivided into proto-, deuto- and tritocerebrum [126]. Fuelled by the results of the functional equivalence of mouse and fly *otx*, *emx* and *en*, which can at least partly rescue loss of function experiments [27,127,128], the morphological tripartite brain has been assigned to the last common ancestor of proto-stomes and deuterostomes [18]. However, functional equivalence experiments are not very informative for the reconstruction of ancestral brain morphologies since they address the level of the interaction of genes inside the network. For example, the *emx* orthologue of *Caenorhabditis elegans*, *celh-2*, is able to partly rescue the *Drosophila* mutant, despite the fact that nematodes themselves do not possess a tripartite brain [129].

In this scenario of deep homology of tripartite brains, divergent brain structures, such as commissural, ring-shaped, mono-, di-partite brains, which are present in most other animal groups [1,45,46], are interpreted as multiple cases of loss or reduction [18]. The scarcity of molecular information about brain development of taxa that lack a tripartite brain makes it currently difficult to test the hypotheses from a molecular perspective (see Martín-Durán *et al.* [130]). In order to investigate the deep bilaterian ancestry of the tripartite brain, we have to test hypotheses of homology at the level of morphology.

Recent morphological studies of the nervous system in representatives of several ecdysozoan groups, in addition to progress in resolving the internal phylogenetic relationships, allow us to

test for congruence of the homology of the tripartite brain of insects and vertebrates and also to determine the direction of evolutionary change (polarity) of brain morphology.

18S and 28S loci did not provide an unambiguous phylogeny for the Ecdysozoa [131]: even with improved taxon sampling, e.g. inclusion of the rare species of Loricifera, trees were prone to LBA artefacts [132,133]. Only with the recent emergence of phylogenomic studies that included broad taxon sampling in Ecdysozoa [100,106,134–136] were more reliable relationships obtained. The emerging topology suggests that the Cycloneuralia (Scalidophora + Nematoida) are paraphyletic, with the Scalidophora forming the sister group to the remaining Ecdysozoa: Nematoida (Nematoda + Nematomorpha) and Arthropoda (Tardigrada, Onychophora, Euarthropoda) [100,106] (figure 3). The two successive branches at the base of the Ecdysozoa comprise small marine groups that are defined by rather simple neuroanatomies.

When mapping brain architectures on this tree, the previous cycloneuralian apomorphy—a ring-shaped neuropil of equal thickness that surrounds the anterior intestine [139,140]—is rendered an apomorphy for all Ecdysozoa (figure 3). But the brain in the cycloneuralian taxa is not as uniform as was first proposed, with divergent architectures in some groups, which mainly differ in the distribution of the somata in the neuropil [140]. It is important in this context to highlight that the somata–neuropil–somata arrangement is a different structure from a tripartite brain of arthropods (and also shows intraphyletic variations) [140]. The scalidophoran groups Priapulida, Loricifera and Kinorhyncha possess the circumoral brain and cycloneuralian arrangement of the neuropile, but in kinorhynchs this ring is interrupted on the ventral side [141]. The complete ring-shaped neuropile in Priapulida can vary in the arrangement of the somata of neurons [140,142], while in the Loricifera so far investigated, the arrangement is more uniform, with an anterior and posterior distribution of the somata [143]. Depending on the internal relationships of the Scalidophora, which currently remains unresolved, either the closed—or ventrally open—ring-like brain is part of the ground pattern of the group.

The two clades of the Nematoida, the Nematoda and Nematomorpha, differ in their brain anatomy (figure 3). While the brain of nematodes forms a compact, ring-shaped neuropil [140,144] and is thus similar to that of the scalidophoran groups, the nematomorphs show only a small anterior condensation so it is unclear if it is an extension of the nerve cord or a separate unit [145,146].

The successive branching of clades that possess a ring-shaped, non-partitioned brain—the Scalidophora and Nematoda—implies that this type of brain was present in the last common ancestor of the Ecdysozoa and provided the starting point for modifications that led to the more complex, partitioned brains of the Panarthropoda (figure 3). If this new topology of the Ecdysozoa is correct, then the presence of the non-partitioned, ring-shaped, circumoral brain in the ecdysozoan ground plan rejects the hypothesis of the homology of the morphologically tripartite brain of arthropods and chordates [18,20,147]. Additionally, in the Panarthropoda, the arthropod outgroups—Tardigrada and Onychophora—render the structure of the tripartite brain of vertebrates and arthropods as homoplastic (figure 3). Recent anatomical studies of tardigrade nervous systems reach contrasting conclusions about the segmental organization of their brains [148]. One study claims that the brain of a tardigrade is indeed

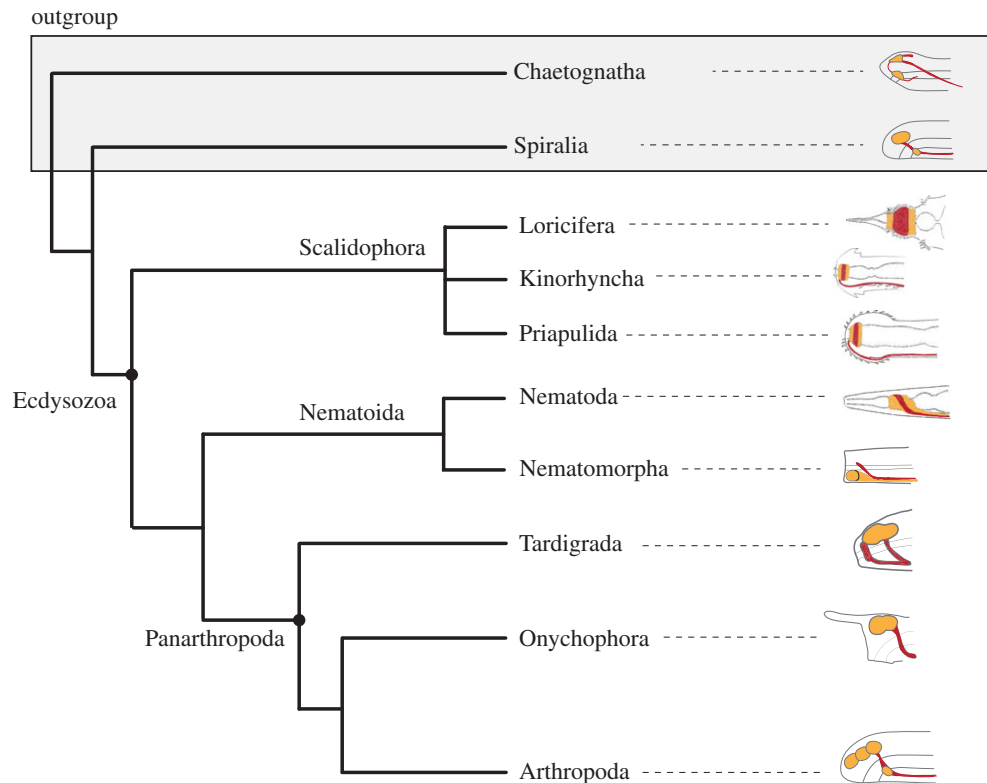


Figure 3. Phylogeny of the Ecdysozoa and schematic of brain structures. The phylogeny is based on a consensus of recent publications that address different nodes in the phylogeny [100,106,134,137]. The brain structures are indicated by line drawings of lateral views of the anterior of representative species (see description and references in S5(a)). The red parts are dominated by neurites and the yellow parts are dominated by the presence of perikarya. Drawings of the lateral views modified from Nielsen [138].

tripartite and proposes homology of these elements with the proto-, deuto- and tritocerebrum of arthropods [149]. Most studies however, cannot detect individual brain clusters or any innervated cephalic appendages [150–154]. Furthermore, developmental studies fail to detect a partitioned anlage of the tardigrade brain and show that the brain develops from a single, ectodermal source that forms a single lobate structure [155,156]. Previous studies of the onychophoran cephalic nerves also come to contrasting conclusions, ranging from a circumoral brain, similar to that of the ‘Cycloneuralia’ [157], or a tripartition proposed to be homologous to the proto-, deuto- and tritocerebrum of the arthropods [158]. Taking the innervations of the cephalic appendages into account, Mayer *et al.* [159] seems to have demonstrated the bipartition of the onychophoran brain of which the anterior part is possibly homologous to the protocerebrum and the posterior part to the deutocerebrum. A recent follow-up study using retrograde fills of pharyngeal nerves of the onychophoran seems to confirm this bipartition and proposes the presence of a compound brain that evolved by convergent fusion of the ganglia [160]. The possibility of a tripartite origin of the bipartition of the onychophoran brain is excluded from the currently debated scenarios since there is no evidence from morphology [148,160]. The situation in the Chelicerata is ambiguous, since the pygogonids—the possible sister group to the remaining chelicerates—seem to have a similar, bipartite structure [161]. This is contrasting the presence of a tritocerebrum in the Euchelicerata, e.g. in *Xiphosura* [162].

In summary, based on the current understanding of the internal topology of the relationships of the ecdysozoan clades, the morphological subdivision of the arthropod brain into proto-, deuto- and tritocerebrum is likely a derived

condition for the arthropod members of the Ecdysozoa. However, even the reconstruction of a tripartite brain for the arthropod stem species is unclear and currently a matter of debate.

We propose that the subdivision of the arthropod brain into proto-, deuto- and tritocerebrum is likely an evolutionary novelty in the arthropod lineage and the structural similarities to the partition of the vertebrate brain can be viewed as homoplasies. The current topology of the ecdysozoan relationships makes it problematic to argue for multiple cases of loss of a tripartite brain, since one would have to assume that the stem lineage would have retained such a brain over millions of years without leaving traces in either extant species or the fossil record. It has to be pointed out here that the argumentation for ‘loss’ in comparative biology should be plausible by the character distribution on phylogeny as well. For example, only the phylogenetic topology allows us to state that urochordates have undergone the loss of some morphological characters [68,97], or that several lineages of formerly ‘archannelids’ are reduced [100,163,164].

If the tripartite brain in vertebrates and arthropods represents a case of homoplasy, how do we interpret the similarities on the molecular level? The first step towards an answer is to investigate the role of the conserved genes in species that show divergent structures. It is fundamental for the understanding of the origin of the tripartite arthropod brain to understand the ‘cycloneuralian’, circumoral brain and its underlying molecular patterning. The only scalidophoran representatives that are currently accessible using molecular methods are the species *Priapululus caudatus* and *Halicryptus spinulosus* [165]. An investigation of the molecular basis of circumoral brain patterning will be necessary to test whether

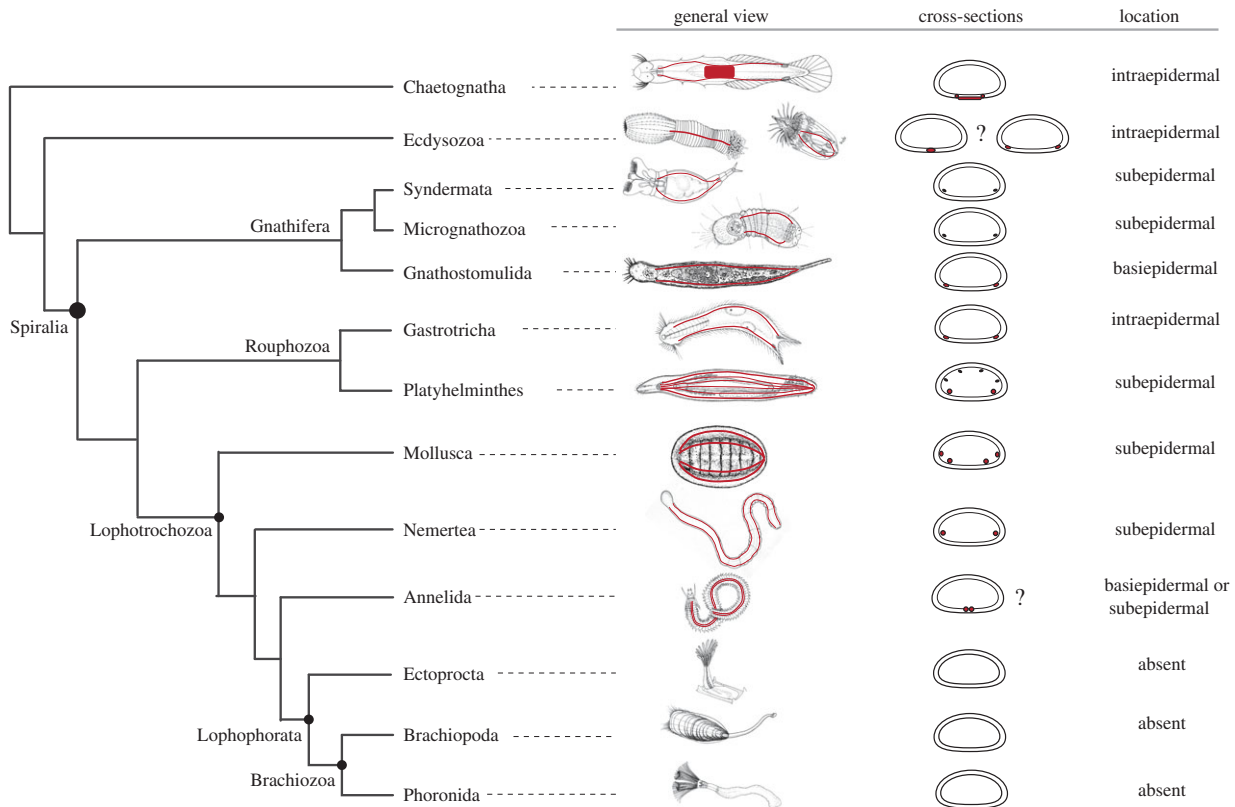


Figure 4. Phylogeny of the Spiralia and the schematic of the location of longitudinal nerves. The phylogeny is based on a consensus of recent publications that address the internal phylogeny of the Spiralia [100,107]. The animal line drawings in the ‘general view’ column illustrate the localization of the main longitudinal nerves for each taxon in red. The schematic mid-body cross-sections in the ‘cross-sections’ column show the location of the main longitudinal nerves in red. The last column ‘location’ indicates the position of the longitudinal nerves in relation to the epidermis.

priapulids share the same patterning mechanisms of arthropods despite the overt morphological differences in brain anatomies (see also [130]).

In case a conserved network is present, a careful study will be necessary to understand what these patterning systems are actually regulating and how this relates to the morphological outcome. This approach will provide insights into the ancestral role of patterning genes during animal evolution and how changes in these networks are expressed in morphological structure.

(b) Breaking long branches: the paraphyly of ‘Platyzoa’ and its impact on bilaterian nerve cord evolution

The discussions about the origin of a CNS with a ventrally or dorsally condensed longitudinal nerve cord are largely based on the assumption that the ventral rope-ladder-like nervous system present in some annelids (e.g. *P. dumerilii*) and arthropods are homologous [13,14,32,37,166]. This organization is strongly associated with a segmented body plan, since its subdivisions correlate with the individual body segments. However, not all Ecdysozoa and Spiralia possess such a segmented body plan and ventral CNS, and the distribution of these characters in the phylogeny are important to infer the ancestral state.

With the placement of the lophophorate taxa into the protostomes, a long-standing question about the affiliation of brachiopods, phoronids, bryozoans and entoprocts had been solved [80]. Halanych *et al.* [80] delivered the node-based definition of Lophotrochozoa for the last common ancestor of molluscs, annelids and lophophorates and all its descendants. Subsequent studies that include a larger taxon

sampling confirmed the lophophorate position inside a taxon that comprises Lophotrochozoa, Gastrotricha, Platyhelminthes and Gnathifera, which together are named Spiralia [86,167]. However, the internal relationships of this assemblage remained unclear, and multiloci and phylogenomic approaches repeatedly recovered the taxon Platyzoa composed out of Rotifera, Gnathostomulida, Gastrotricha and Platyhelminthes as sister to the Lophotrochozoa (reviewed in [3,6,167,168]). The Platyzoa are conspicuous because their long branches indicate rapidly evolving molecular sequences, which suggest that this grouping might be an artefact that is based on LBA [100,107]. Recently, phylogenomic methods have been improved to better address LBA artefacts by using site heterogeneous models [99,169]. New studies that increased taxon sampling in the Spiralia and applied appropriate phylogenomic methods were able to reduce the LBA effect and rendered the Platyzoa paraphyletic into two clades at the base of the Spiralia: Gnathifera and the so-called Rouphezoa (Gastrotricha + Platyhelminthes) [100,107] (figure 4). If this result is robust and is supported by future studies, it has a tremendous impact on our understanding of animal body plan evolution and the evolution of development [170].

The broad-scale topology places two separate groups at the base of the Spiralia that are rather small, simple, interstitial animals—the Gnathifera and the Rouphezoa (figure 4). The relevance of this for recent discussions about animal body plan evolution cannot be underestimated since they all lack segmentation, coeloms, a ventral CNS and larval dispersal stages.

These characters are only found in a subset of the Trochozoa and thus most likely evolved independently during the

diversification of the clade. If true, then proposed homologies of many of the complex traits of certain trochozoans to arthropods and chordates are rendered as homoplasies [6]. Below we exemplify and discuss the impact of these new relationships on the proposed homology of the ventrally centralized nervous systems of annelids and arthropods.

The Gnathifera is the sister group to the remaining Spiralia [100,107] and is composed of the Gnathostomulida, Syndermata and Micrognathozoa [171]. The gnathostomulids possess three pairs of basiepidermal, longitudinal nerves (neurite bundles) of which the ventrolateral ones lack perikarya [172–174]. Such paired ventrolateral connectives constitute the major organizational features of the nervous system of micrognathozoans [175,176] and Rotifera [177–179] (figure 4). These lateral nerves are rarely connected by commissures, and in the few cases where they are present, commissures are not to a ganglion-like structure (figure 2).

Gnathifera forms the sister group to Trochozoa (=Lophotrochozoa) and Rousphozoa (Gastrotricha + Platyhelminthes) [100,107]. The gastrotrich nervous system in the trunk is very similar to the Gnathifera and is composed of a single pair of lateral neurite bundles lined by neuronal somata [180,181]. The platyhelminth nervous system is usually referred to as a typical orthogon composed of pairs of dorsal, lateral and ventrolateral cords [182]. Recent phylogenomic approaches to solve the internal phylogeny of Platyhelminthes agree upon the split of Cantenulida and Rhabditophora, with the Macrostomida as sister to all remaining Rhabditophora [183,184]. The ‘microturbellarian’ catenulid and macrostomid nervous systems are relatively similar and the comparison with other members of the group allows the reconstruction of the ground plan for the Platyhelminthes [185–187]. This ground pattern comprises a pair of main neurite bundles, which are located laterally in the slightly orthogonal nervous system [188]. These main neurite bundles are partly lined by perikarya and thus can be described as a medullary cord, while some of the dorsal and lateral neurite bundles lack neural cell bodies and are usually referred to as ‘minor cords’ [187,189].

The similarity of the pair of lateral neurite bundles in Gnathifera, Platyhelminthes and Gastrotrichs is striking and suggests that at least such lateral—and not ventrally centralized—longitudinal nerves form the ancestral condition for the Spiralia (figure 4). The remaining clades of the Lophotrochozoa (or Trochozoa) show a variable pattern of the trunk nervous system, and the internal relationships are still not fully resolved. Figure 4 shows the spiralian interrelationships based on recent phylogenetic analyses [100,107], which we use as a preliminary framework to map trunk nervous system architectures to detect the direction of evolution (see above).

In recent years, internal phylogenetic relationships of major trochozoan groups have been addressed using phylogenetic tools (Mollusca: [190,191]; Annelida: [192,193]; Nemertea: [194]). Well-resolved internal relationships allow us to reconstruct ground patterns for different organ systems and can highlight species that are likely to be informative for addressing specific evolutionary questions [195]. Although the internal phylogeny of Lophotrochozoa is not fully settled yet [100], we can make some reasonable approximations to what trunk nervous system architecture was likely present in the stem species of Mollusca, Annelida, Lophophorata and Nemertea: the nervous systems of the lophophorata taxa Brachiopoda, Phoronida, Bryozoa and Entoprocta are characterized by the presence of the lophophore and their

sessile lifestyle [46]. The main nervous system is present as a basiepidermal nerve plexus with stronger innervation of the lophophore [1]. Molluscs vary in their nervous system based on their lifestyle, but the ground pattern is likely represented by two pairs of longitudinal nerves—the pedal nerve that innervates the foot and the lateral nerve [196]. These lateral cords are often connected with commissures which led to their description as ‘tetra-neural orthogon’ [197,198]. Nemertean trunk nervous systems possess two lateral cords that are internalized—the body also possesses an intraepidermal nervous system [199–202]. The only group in the Spiralia for which a ventrally centralized, rope-ladder-like nervous system composed of two or more cords with ventral ganglia that are connected with ventral commissures has been proposed are the annelids [203,204]. However, the morphological variation of such architecture inside the Annelida is surprisingly variable, and it depends on the internal phylogenetic relationships if the textbook example of such rope-ladder-like ventral nerve cord is even ancestral for the Annelida [203,205]. For example, in the first two separate lineages that are sister groups to all the remaining annelids, the Owenidae + Magelonidae and Chaetoptera [100,163,164,193], the nervous system is still basiepidermal [206] and has been internalized below the musculature during the evolution of other annelid groups possibly multiple times independently.

Altogether, progress in resolving Spiralian relationships allows a reassessment of character evolution in the morphologically diverse Spiralia. This analysis does not support the hypothesis that annelids exemplify the ‘Urbilatarian’ [207] representing ancestral character states for the Spiralia. The most recent research findings suggest that annelids are a highly specialized group that evolved a complex ventral nerve cord likely by elaborating and centralizing lateral cords that are present in most other Spiralian groups. Even the textbook rope-ladder-like ventral CNS that has been studied in great molecular detail in *P. dumerilii* may not be part of the ground pattern of Annelida [203,205]. This is plausible when one considers that annelids are the only spiralian taxon that changed locomotion by cilia to undulating movements of a segmented body and use of appendages (parapodia). Likewise, the evolution of the prominent segmented body plan of annelids was connected to this change [208] as well as the elaboration of the ventral musculature [209].

Similar to the proposition that the tripartite brain as a neural structure is homologous to the vertebrate tripartite brain, the ventrally centralized nerve cord in annelids and arthropods—when tested for congruence—is likely a homoplasy. These observations also impact the hypothesis about the homology of the vertebrate dorsal nervous system and the ventral nervous system of arthropods (see above). Since the Protostomia are the outgroup of Deuterostomia, the reconstruction of the stem species of the Protostomia impacts what we infer as ancestral for the Deuterostomia.

6. Conclusion and outlook

If the tripartite brain and the highly centralized trunk nervous system of vertebrates and arthropods are examples for fascinating homoplasies, how do we interpret the similarities on the molecular level? This fundamental question about previous attempts to homologize structures across large evolutionary distances based on similar patterning genes

relates not only to neural characters, but also to other organ systems, and their tissues and cell types. If the underlying genetic programme is identical at the level of signalling cascades and transcription factors, what is it that shapes the morphological differences? A recent study that compared the expression patterns of the priapulid digestive tract with that of *Caenorhabditis elegans* and *Drosophila melanogaster* shows that although the digestive tracts of all three animals develop using vastly different modes and differ also in their final morphology, the underlying network of transcription factors shows a high correspondence [210]. This work, and the work on ectodermal patterning and evolution in *Saccoglossus* [61,62], show that the reconstruction of ancestral morphologies based primarily on molecular genetic data is rife with difficulties [211]: similar—and likely conserved—gene regulatory networks seem to be able to regulate a very divergent morphological outcome over macroevolutionary timeframes, so care has to be taken when using these networks as evidence for morphological homology, especially if the conclusions drawn on ancestral character states based on developmental genetic datasets are in conflict with conclusions drawn from morphological studies [212].

In order to reconstruct the early evolution of animal groups and to understand changes in evolution, we need to invest resources into reconstructing character states at different nodes in the animal tree of life. We also need a better appreciation of both the phylogenetic position and basic biology of so-called ‘minor’ groups, since they have the potential to help us understand the direction of evolutionary change in deep time. Recent progress in resolving animal relationships also

demonstrates that attempts to homologize superficially similar structures without knowledge about the intermediate taxa can lead to premature conclusions about organ system evolution. Improved knowledge about animal relationships, and the continued expansion of developmental and morphological studies into representatives of formerly neglected groups, will lead to a better understanding of how genetic information regulates morphological structures, and how this changes over macroevolutionary timeframes to give rise to the astonishing animal diversity we observe in nature.

Authors’ contributions. Both authors discussed the topic and wrote the manuscript.

Competing interests. We have no competing interests.

Funding. A.H. received support from the Sars Core budget and Marie Curie ITN ‘NEPTUNE’ (FP7-PEOPLE-2012-ITN 317172) and FP7-PEOPLE-2009-RG 256450. C.J.L. was supported by NSF 1258169 and NASA 11-EXO11-0135.

Acknowledgements. We thank the organizers of the meeting ‘Origin and evolution of the nervous system’ Nick Strausfeld and Frank Hirth for the invitation to the meeting. We are also grateful to the organizers and The Royal Society for supporting and hosting the meeting in London. We thank Gerhard Scholtz, Ariel Pani and Chema Martín-Durán for commenting on the manuscript.

Endnote

¹We refer here to Lophotrochozoa in its original definition by Halanych *et al.* [80]. In the following, we use the taxon name Spiralia, since recent phylogenies render Lophotrochozoa as subclade of Spiralia.

References

- Schmidt-Rhaesa A. 2007 *The evolution of organ systems*. Oxford, UK: Oxford University Press.
- Budd GE. 2015 Early animal evolution and the origins of nervous systems. *Phil. Trans. R. Soc. B* **370**, 20150037. (doi:10.1098/rstb.2015.0037)
- Edgecombe GD, Giribet G, Dunn CW, Hejnol A, Kristensen RM, Neves RC, Rouse GW, Worsaae K, Sørensen MV. 2011 Higher-level metazoan relationships: recent progress and remaining questions. *Org. Divers. Evol.* **11**, 151–172. (doi:10.1007/s13127-011-0044-4)
- Peterson KJ, Butterfield NJ. 2005 Origin of the Eumetazoa: testing ecological predictions of molecular clocks against the Proterozoic fossil record. *Proc. Natl Acad. Sci. USA* **102**, 9547–9552. (doi:10.1073/pnas.0503660102)
- Peterson KJ, Cotton JA, Gehling JG, Pisani D. 2008 The Ediacaran emergence of bilaterians: congruence between the genetic and the geological fossil records. *Phil. Trans. R. Soc. B* **363**, 1435–1443. (doi:10.1098/rstb.2007.2233)
- Dunn CW, Giribet G, Edgecombe GD, Hejnol A. 2014 Animal phylogeny and its evolutionary implications. *Annu. Rev. Ecol. Evol. Syst.* **45**, 371–395. (doi:10.1146/annurev-ecolsys-120213-091627)
- Erwin DH, Laflamme M, Tweedt SM, Sperling EA, Pisani D, Peterson KJ. 2011 The Cambrian conundrum: early divergence and later ecological success in the early history of animals. *Science* **334**, 1091–1097. (doi:10.1126/science.1206375)
- Erwin DH, Valentine JW. 2013 *The Cambrian explosion: the construction of animal biodiversity*. Greenwood Village, CO: Roberts & Company.
- Budd GE, Jensen S. In press. The origin of the animals and a ‘Savannah’ hypothesis for early bilaterian evolution. *Biol. Rev.*
- Budd GE, Jensen S. 1998 Trace fossils and the Cambrian explosion. *Trends Ecol. Evol.* **13**, 507. (doi:10.1016/S0169-5347(98)01503-1)
- Jensen S. 2003 The proterozoic and earliest Cambrian trace fossil record; patterns, problems and perspectives. *Integr. Comp. Biol.* **43**, 219–228. (doi:10.1093/icb/43.1.219)
- Vannier J, Calandra I, Gaillard C, Žylińska A. 2010 Priapulid worms: pioneer horizontal burrowers at the Precambrian–Cambrian boundary. *Geology* **38**, 711–714. (doi:10.1130/G30829.1)
- Holland LZ, Carvalho JE, Escrava H, Laudet V, Schubert M, Shimeld SM, Yu JK. 2013 Evolution of bilaterian central nervous systems: a single origin? *Evodevo* **4**, 27. (doi:10.1186/2041-9139-4-27)
- Holland ND. 2003 Early central nervous system evolution: an era of skin brains? *Nat. Rev. Neurosci.* **4**, 617–627. (doi:10.1038/nrn1175)
- Northcutt RG. 2012 Evolution of centralized nervous systems: two schools of evolutionary thought. *Proc. Natl Acad. Sci. USA* **109**(Suppl. 1), 10 626–10 633. (doi:10.1073/pnas.1201889109)
- Krumlauf R, Marshall H, Studer M, Nonchev S, Sham MH, Lumsden A. 1993 *Hox* homeobox genes and regionalisation of the nervous system. *J. Neurobiol.* **24**, 1328–1340. (doi:10.1002/neu.480241006)
- Arendt D, Denes AS, Jékely G, Tessmar-Raible K. 2008 The evolution of nervous system centralization. *Phil. Trans. R. Soc. B* **363**, 1523–1528. (doi:10.1098/rstb.2007.2242)
- Hirth F. 2010 On the origin and evolution of the tripartite brain. *Brain Behav. Evol.* **76**, 3–10. (doi:10.1159/000320218)
- Hirth F, Kammermeier L, Frei E, Walldorf U, Noll M, Reichert H. 2003 An urbilaterian origin of the tripartite brain: developmental genetic insights from *Drosophila*. *Development* **130**, 2365–2373. (doi:10.1242/dev.00438)
- Hirth F, Reichert H. 1999 Conserved genetic programs in insect and mammalian brain development. *Bioessays* **21**, 677–684. (doi:10.1002/(SICI)1521-1878(199908)21:8<677::AID-BIES7>>3.0.CO;2-8)
- Lichtneckert R, Reichert H. 2008 Anteroposterior regionalization of the brain: genetic and comparative aspects. *Adv. Exp. Med. Biol.* **628**, 32–41. (doi:10.1007/978-0-387-78261-4_2)

22. Reichert H, Riebli N. 2015 Perspective—the first brain. In *Structure and evolution of invertebrate nervous systems* (eds A Schmidt-Rhaesa, S Harzsch, G Purschke), pp. 67–73. Oxford, UK: Oxford University Press.
23. Reichert H, Simeone A. 2001 Developmental genetic evidence for a monophyletic origin of the bilaterian brain. *Phil. Trans. R. Soc. Lond. B* **356**, 1533–1544. (doi:10.1098/rstb.2001.0972)
24. Acampora D, Mazan S, Lallemand Y, Avantaggiato V, Maury M, Simeone A, Brulet P. 1995 Forebrain and midbrain regions are deleted in *Otx2*^{-/-} mutants due to a defective anterior neuroectoderm specification during gastrulation. *Development* **121**, 3279–3290.
25. Matsuo I, Kuratani S, Kimura C, Takeda N, Aizawa S. 1995 Mouse *Otx2* functions in the formation and patterning of rostral head. *Genes Dev.* **9**, 2646–2658. (doi:10.1101/gad.9.21.2646)
26. Acampora D *et al.* 2001 OTD/OTX2 functional equivalence depends on 5' and 3' UTR-mediated control of *Otx2* mRNA for nucleocytoplasmic export and epiblast-restricted translation. *Development* **128**, 4801–4813.
27. Leuzinger S, Hirth F, Gerlich D, Acampora D, Simeone A, Gehring WJ, Finkelstein R, Furukubo-Tokunaga K, Reichert H. 1998 Equivalence of the fly *orthodenticle* gene and the human *OTX* genes in embryonic brain development of *Drosophila*. *Development* **125**, 1703–1710.
28. De Robertis EM, Sasai Y. 1996 A common plan for dorsoventral patterning in Bilateria. *Nature* **380**, 37–40. (doi:10.1038/380037a0)
29. Holley SA, Jackson PD, Sasai Y, Lu B, De Robertis EM, Hoffmann FM, Ferguson EL. 1995 A conserved system for dorsal–ventral patterning in insects and vertebrates involving *sog* and *chordin*. *Nature* **376**, 249–253. (doi:10.1038/376249a0)
30. Urbach R, Technau GM. 2008 Dorsoventral patterning of the brain: a comparative approach. In *Brain development in Drosophila melanogaster* (ed. GM Technau), pp. 42–56. Heidelberg, Germany: Landes Bioscience and Springer Science+Business Media.
31. Arendt D, Nübler-Jung K. 1994 Inversion of dorsoventral axis? *Nature* **371**, 26. (doi:10.1038/371026a0)
32. Mizutani CM, Bier E. 2008 *EvoD/Vo*: the origins of BMP signalling in the neuroectoderm. *Nat. Rev. Genet.* **9**, 663–677. (doi:10.1038/nrg2417)
33. Geoffroy St.-Hilarie E. 1822 Considérations générales sur la vertèbre. *Mém. Mus. Hist. Nat.* **9**, 89–119.
34. Dohrn A. 1875 *Der Ursprung der Wirbelthiere und das Pincip des Functionswechsels*. Leipzig, Germany: Verlag von Wilhelm Engelmann.
35. Nübler-Jung K, Arendt D. 1994 Is ventral in insects dorsal in vertebrates? *Roux's Arch. Dev. Biol.* **203**, 357–366. (doi:10.1007/BF00188683)
36. Arendt D, Nübler-Jung K. 1999 Comparison of early nerve cord development in insects and vertebrates. *Development* **126**, 2309–2325.
37. Denes AS, Jékely G, Steinmetz PRH, Raible F, Snyman H, Prud'homme B, Ferrier DEK, Balavoine G, Arendt D. 2007 Molecular architecture of annelid nerve cord supports common origin of nervous system centralization in Bilateria. *Cell* **129**, 277–288. (doi:10.1016/j.cell.2007.02.040)
38. Tomer R, Denes AS, Tessmar-Raible K, Arendt D. 2010 Profiling by image registration reveals common origin of annelid mushroom bodies and vertebrate pallium. *Cell* **142**, 800–809. (doi:10.1016/j.cell.2010.07.043)
39. Tessmar-Raible K, Arendt D. 2003 Emerging systems: between vertebrates and arthropods, the Lophotrochozoa. *Curr. Opin. Genet. Dev.* **13**, 331–340. (doi:10.1016/S0959-437X(03)00086-8)
40. Rieppel CO. 1988 *The fundamentals of comparative biology*. Basel, Switzerland: Birkhäuser.
41. Baum DA, Smith SD. 2013 *Tree thinking—an introduction to phylogenetic biology*. Greenwood Village, CO: Roberts and Company Publishers.
42. Dickinson WJ. 1995 Molecules and morphology: where's the homology? *Trends Genet.* **11**, 119–121. (doi:10.1016/S0168-9525(00)89015-0)
43. Stach T. 2015 Xenoturbella. In *Structure and evolution of invertebrate nervous systems* (eds A Schmidt-Rhaesa, S Harzsch, G Purschke), pp. 62–66. Oxford, UK: Oxford University Press.
44. Hejnal A. 2015 Acoelomorpha. In *Structure and evolution of invertebrate nervous systems* (eds A Schmidt-Rhaesa, S Harzsch, G Purschke), pp. 56–61. Oxford, UK: Oxford University Press.
45. Bullock TH, Horridge GA. 1965 *Structure and function in the nervous systems of invertebrates*. San Francisco, CA: W. H. Freeman and Company.
46. Schmidt-Rhaesa A, Harzsch S, Purschke G. 2015 *Structure and evolution of invertebrate nervous systems*. Oxford, UK: Oxford University Press.
47. Swalla BJ, Smith AB. 2008 Deciphering deuterostome phylogeny: molecular, morphological and palaeontological perspectives. *Phil. Trans. R. Soc. B* **363**, 1557–1568. (doi:10.1098/rstb.2007.2246)
48. Cannon JT, Kocot KM, Waits DS, Weese DA, Swalla BJ, Santos SR, Halanych KM. 2014 Phylogenomic resolution of the hemichordate and echinoderm clade. *Curr. Biol.* **24**, 2827–2832. (doi:10.1016/j.cub.2014.10.016)
49. Cameron CB, Garey JR, Swalla BJ. 2000 Evolution of the chordate body plan: new insights from phylogenetic analyses of deuterostome phyla. *Proc. Natl Acad. Sci. USA* **97**, 4469–4474. (doi:10.1073/pnas.97.9.4469)
50. Wada H, Satoh N. 1994 Details of the evolutionary history from invertebrates to vertebrates, as deduced from the sequences of 18S rDNA. *Proc. Natl Acad. Sci. USA* **91**, 1801–1804. (doi:10.1073/pnas.91.5.1801)
51. Pani AM, Mullarkey EE, Aronowicz J, Assimakopoulos S, Grove EA, Lowe CJ. 2012 Ancient deuterostome origins of vertebrate brain signalling centres. *Nature* **483**, 289–294. (doi:10.1038/nature10838)
52. Bullock TH. 1945 The anatomical organization of the nervous system of Enteropneusta. *Q. J. Microsc. Sci.* **86**, 55–111.
53. Kaul S, Strehlow S, Urata M, Minokawa T, Stach T, Wanninger A. 2015 Neurogenesis in directly and indirectly developing enteropneusts: of nets and cords. *Org. Divers. Evol.* **15**, 405–422. (doi:10.1007/s13127-015-0201-2)
54. Nomaksteinsky M, Röttinger E, Dufour HD, Chettouh Z, Lowe CJ, Martindale MQ, Brunet JF. 2009 Centralization of the deuterostome nervous system predates chordates. *Curr. Biol.* **19**, 1264–1269. (doi:10.1016/j.cub.2009.05.063)
55. Stach T. 2015 Hemichordata. In *Structure and evolution of invertebrate nervous systems* (eds A Schmidt-Rhaesa, S Harzsch, G Purschke), pp. 689–698. Oxford, UK: Oxford University Press.
56. Miyamoto N, Wada H. 2013 Hemichordate neurulation and the origin of the neural tube. *Nat. Commun.* **4**, 2713. (doi:10.1038/ncomms3713)
57. Nübler-Jung K, Arendt D. 1999 Dorsoventral axis inversion: enteropneust anatomy links invertebrates to chordates turned upside down. *J. Zool. Syst. Evol. Res.* **37**, 93–100. (doi:10.1046/j.1439-0469.1999.372106.x)
58. Kaul S, Stach T. 2010 Ontogeny of the collar cord: neurulation in the hemichordate *Saccoglossus kowalevskii*. *J. Morphol.* **271**, 1240–1259. (doi:10.1002/jmor.10868)
59. Luttrell S, Konikoff C, Byrne A, Bengtsson B, Swalla BJ. 2012 Ptychoderid hemichordate neurulation without a notochord. *Integr. Comp. Biol.* **52**, 829–834. (doi:10.1093/icb/ics117)
60. Lowe CJ, Clarke DN, Medeiros DM, Rokhsar DS, Gerhart J. 2015 The deuterostome context of chordate origins. *Nature* **520**, 456–465. (doi:10.1038/nature14434)
61. Lowe CJ, Wu M, Salic A, Evans L, Lander E, Stange-Thomann N, Gruber CE, Gerhart J, Kirschner M. 2003 Anteroposterior patterning in hemichordates and the origins of the chordate nervous system. *Cell* **113**, 853–865. (doi:10.1016/S0092-8674(03)00469-0)
62. Lowe CJ. 2008 Molecular genetic insights into deuterostome evolution from the direct-developing hemichordate *Saccoglossus kowalevskii*. *Phil. Trans. R. Soc. B* **363**, 1569–1578. (doi:10.1098/rstb.2007.2247)
63. Aronowicz J, Lowe CJ. 2006 *Hox* gene expression in the hemichordate *Saccoglossus kowalevskii* and the evolution of deuterostome nervous systems. *Integr. Comp. Biol.* **46**, 890–901. (doi:10.1093/icb/icl045)
64. Gillis JA, Fritzenwanker JH, Lowe CJ. 2012 A stem-deuterostome origin of the vertebrate pharyngeal transcriptional network. *Proc. R. Soc. B* **279**, 237–246. (doi:10.1098/rspb.2011.0599)
65. Irimia M, Piñeiro C, Maeso I, Gómez-Skarmeta JL, Casares F, García-Fernández J. 2010 Conserved developmental expression of *Fezf* in chordates and *Drosophila* and the origin of the *Zona Limitans Intrathalamica* (ZLI) brain organizer. *Evodevo* **1**, 7. (doi:10.1186/2041-9139-1-7)
66. Moroz LL. 2009 On the independent origins of complex brains and neurons. *Brain Behav. Evol.* **74**, 177–190. (doi:10.1159/000258665)
67. Yankura KA, Martik ML, Jennings CK, Hinman VF. 2010 Uncoupling of complex regulatory patterning during evolution of larval development in

- echinoderms. *BMC Biol.* **8**, 143. (doi:10.1186/1741-7007-8-143)
68. Bourlat SJ *et al.* 2006 Deuterostome phylogeny reveals monophyletic chordates and the new phylum Xenoturbellida. *Nature* **444**, 85–88. (doi:10.1038/nature05241)
69. Hennig W. 1966 *Phylogenetic systematics*. Urbana, IL: University of Illinois Press.
70. Hennig W. 1950 *Grundzüge einer Theorie der phylogenetischen Systematik*. Berlin, Germany: Deutscher Zentralverlag.
71. Hamilton A. 2014 Historical and conceptual perspectives on modern systematics: groups, ranks, and the phylogenetic turn. In *The evolution of phylogenetic systematics* (ed. A Hamilton), pp. 89–116. Berkeley, CA: University of California Press.
72. Giribet G. 2015 Morphology should not be forgotten in the era of genomics—a phylogenetic perspective. *Zool. Anz.* **256**, 96–103. (doi:10.1016/j.jcz.2015.01.003)
73. Zuckerkandl E, Pauling L. 1965 Molecules as documents of evolutionary history. *J. Theor. Biol.* **8**, 357–366. (doi:10.1016/0022-5193(65)90083-4)
74. Abouheif E, Zardoya R, Meyer A. 1998 Limitations of metazoan 18S rRNA sequence data: implications for reconstructing a phylogeny of the animal kingdom and inferring the reality of the Cambrian explosion. *J. Mol. Evol.* **47**, 394–405. (doi:10.1007/PL00006397)
75. Field KG, Olsen GJ, Lane DJ, Giovannoni SJ, Ghiselin MT, Raff EC, Pace NR, Raff RA. 1988 Molecular phylogeny of the animal kingdom. *Science* **239**, 748–753. (doi:10.1126/science.3277277)
76. Telford MJ. 2013 Field *et al.* *Redux. Evodevo* **4**, 5. (doi:10.1186/2041-9139-4-5)
77. Adoutte A, Balavoine G, Lartillot N, de Rosa R. 1999 Animal evolution: the end of the intermediate taxa? *Trends Genet.* **15**, 104–108. (doi:10.1016/S0168-9525(98)01671-0)
78. Halanych KM. 2004 The new view of animal phylogeny. *Annu. Rev. Ecol. Evol. Syst.* **35**, 229–256. (doi:10.1146/annurev.ecolsys.35.112202.130124)
79. Aguinaldo AM, Turbeville JM, Linford LS, Rivera MC, Garey JR, Raff RA, Lake JA. 1997 Evidence for a clade of nematodes, arthropods and other moulting animals. *Nature* **387**, 489–493. (doi:10.1038/387489a0)
80. Halanych KM, Bacheller JD, Aguinaldo AM, Liva SM, Hillis DM, Lake JA. 1995 Evidence from 18S ribosomal DNA that the lophophorates are protostome animals. *Science* **267**, 1641–1643. (doi:10.1126/science.7886451)
81. Adoutte A, Balavoine G, Lartillot N, Lespinet O, Prud'homme B, de Rosa R. 2000 The new animal phylogeny: reliability and implications. *Proc. Natl Acad. Sci. USA* **97**, 4453–4456. (doi:10.1073/pnas.97.9.4453)
82. Carroll SB, Grenier JK, Weatherbee SD. 2005 *From DNA to diversity*, 2nd edn. Malden, MA: Blackwell Publishing.
83. Gerhart J, Kirschner M. 1997 *Cells, embryos, and evolution*. Malden, MA: Blackwell Publishing.
84. Hauenschild C, Fischer A. 1969 *Platynereis dumerilii. Mikroskopische Anatomie, Fortpflanzung und Entwicklung*. Stuttgart, Germany: G. Fischer Verlag.
85. Arendt D, Technau U, Wittbrodt J. 2001 Evolution of the bilaterian larval foregut. *Nature* **409**, 81–85. (doi:10.1038/35051075)
86. Giribet G, Distel DL, Polz M, Sterrer W, Wheeler WC. 2000 Triploblastic relationships with emphasis on the acelomates and the position of Gnathostomulida, Cycliophora, Plathelminthes, and Chaetognatha: a combined approach of 18S rDNA sequences and morphology. *Syst. Biol.* **49**, 539–562. (doi:10.1080/10635159950127385)
87. Carranza S, Bagaña J, Riutort M. 1997 Are the Platyhelminthes a monophyletic primitive group? An assessment using 18S rDNA sequences. *Mol. Biol. Evol.* **14**, 485–497. (doi:10.1093/oxfordjournals.molbev.a025785)
88. Ruiz-Trillo I, Riutort M, Littlewood DTJ, Herniou EA, Bagaña J. 1999 Acoel flatworms: earliest extant bilaterian Metazoans, not members of Platyhelminthes. *Science* **283**, 1919–1923. (doi:10.1126/science.283.5409.1919)
89. Hejnol A, Martín-Durán JM. 2015 Getting to the bottom of anal evolution. *Zool. Anz.* **256**, 61–74. (doi:10.1016/j.jcz.2015.02.006)
90. Hejnol A, Martindale MQ. 2008 Acoel development indicates the independent evolution of the bilaterian mouth and anus. *Nature* **456**, 382–386. (doi:10.1038/nature07309)
91. Hejnol A, Martindale MQ. 2008 Acoel development supports a simple planula-like urbilaterian. *Phil. Trans. R. Soc. B* **363**, 1493–1501. (doi:10.1098/rstb.2007.2239)
92. Hejnol A, Martindale MQ. 2009 The mouth, the anus, and the blastopore—open questions about questionable openings. In *Animal evolution* (eds MJ Telford, DT Littlewood), pp. 33–40. Oxford, UK: Oxford University Press.
93. Marletaz F *et al.* 2006 Chaetognath phylogenomics: a protostome with deuterostome-like development. *Curr. Biol.* **16**, R577–R578. (doi:10.1016/j.cub.2006.07.016)
94. Matus DQ, Halanych KM, Martindale MQ. 2007 The *Hox* gene complement of a pelagic chaetognath, *Flaccisagitta enflata*. *Integr. Comp. Biol.* **47**, 854–864. (doi:10.1093/icb/icom077)
95. Philippe H, Telford MJ. 2006 Large-scale sequencing and the new animal phylogeny. *Trends Ecol. Evol.* **21**, 614–620. (doi:10.1016/j.tree.2006.08.004)
96. Philippe H, Delsuc F, Brinkmann H, Lartillot N. 2005 Phylogenomics. *Annu. Rev. Ecol. Evol. Syst.* **36**, 541–562. (doi:10.1146/annurev.ecolsys.35.112202.130205)
97. Delsuc F, Brinkmann H, Chourrout D, Philippe H. 2006 Tunicates and not cephalochordates are the closest living relatives of vertebrates. *Nature* **439**, 965–968. (doi:10.1038/nature04336)
98. Dunn CW *et al.* 2008 Broad phylogenomic sampling improves resolution of the animal tree of life. *Nature* **452**, 745–749. (doi:10.1038/nature06614)
99. Philippe H, Brinkmann H, Lavrov DV, Littlewood DTJ, Manuel M, Wörheide G, Baurain D. 2011 Resolving difficult phylogenetic questions: why more sequences are not enough. *PLoS Biol.* **9**, e1000602. (doi:10.1371/journal.pbio.1000602)
100. Laumer CE *et al.* 2015 Spiralian phylogeny informs the evolution of microscopic lineages. *Curr. Biol.* **25**, 2000–2006. (doi:10.1016/j.cub.2015.06.068)
101. Srivastava M, Mazza-Curll KL, van Wolfswinkel JC, Reddien PW. 2014 Whole-body acoel regeneration is controlled by Wnt and Bmp-Admp signaling. *Curr. Biol.* **24**, 1107–1113. (doi:10.1016/j.cub.2014.03.042)
102. Whelan NV, Kocot KM, Moroz LL, Halanych KM. 2015 Error, signal, and the placement of Ctenophora sister to all other animals. *Proc. Natl Acad. Sci. USA* **112**, 5773–5778. (doi:10.1073/pnas.1503453112)
103. Hejnol A *et al.* 2009 Assessing the root of bilaterian animals with scalable phylogenomic methods. *Proc. R. Soc. B* **276**, 4261–4270. (doi:10.1098/rspb.2009.0896)
104. Moroz LL *et al.* 2014 The ctenophore genome and the evolutionary origins of neural systems. *Nature* **510**, 109–114. (doi:10.1038/nature13400)
105. Ryan JF *et al.* 2013 The genome of the ctenophore *Mnemiopsis leidyi* and its implications for cell type evolution. *Science* **342**, 1242592. (doi:10.1126/science.1242592)
106. Börner J, Rehm P, Schill RO, Ebersberger I, Burmester T. 2014 A transcriptome approach to ecdysozoan phylogeny. *Mol. Phylogenet. Evol.* **80**, 79–87. (doi:10.1016/j.ympev.2014.08.001)
107. Struck TH *et al.* 2014 Platyzoan paraphyly based on phylogenomic data supports a noncoelomate ancestry of spiralia. *Mol. Biol. Evol.* **31**, 1833–1849. (doi:10.1093/molbev/msu143)
108. Abouheif E. 1997 Developmental genetics and homology: a hierarchical approach. *Trends Ecol. Evol.* **12**, 405–408. (doi:10.1016/S0169-5347(97)01125-7)
109. Abouheif E, Akam M, Dickinson WJ, Holland PWH, Meyer A, Patel NH, Raff RA, Roth VL, Wray GA. 1997 Homology and developmental genes. *Trends Genet.* **13**, 432–433. (doi:10.1016/S0168-9525(97)01271-7)
110. Sanetra M, Begemann G, Becker MB, Meyer A. 2005 Conservation and co-option in developmental programmes: the importance of homology relationships. *Front. Zool.* **2**, 15. (doi:10.1186/1742-9994-2-15)
111. Telford MJ, Budd GE. 2003 The place of phylogeny and cladistics in Evo-Devo research. *Int. J. Dev. Biol.* **47**, 479–490.
112. Rieppel CO. 1992 Homology and logical fallacy. *J. Evol. Biol.* **5**, 701–715. (doi:10.1046/j.1420-9101.1992.5040701.x)
113. Riedl R. 2000 *Strukturen der Komplexität. Eine Morphologie des Erkennens und Erklärens*. Berlin, Germany: Springer.
114. Wilson EB. 1895 The embryological criterion of homology. In *Biological lectures delivered at the marine biological laboratory of Wood's hole*, pp. 101–124. Boston, MA: Ginn & Co.
115. Scholtz G. 2005 Homology and ontogeny: pattern and process in comparative developmental biology.

- Theor. Biosci.* **124**, 121–143. (doi:10.1007/BF02814480)
116. Wagner GP, Misof BY. 1993 How can a character be developmentally constrained despite variation in developmental pathways? *J. Evol. Biol.* **6**, 449–455. (doi:10.1046/j.1420-9101.1993.6030449.x)
117. de Pinna MCC. 1991 Concepts and tests of homology in the cladistic paradigm. *Cladistics* **7**, 367–394. (doi:10.1111/j.1096-0031.1991.tb00045.x)
118. Sattler R. 1994 Homology, homeosis, and process morphology in plants. In *Homology: the hierarchical basis of comparative biology* (ed. BK Hall), pp. 423–475. San Diego, CA: Academic Press.
119. Richter S. 2005 Homologies in phylogenetic analyses—concept and tests. *Theory Biosci.* **124**, 105–120. (doi:10.1016/j.tbio.2005.09.004)
120. Sluys R. 1996 The notion of homology in current comparative biology. *J. Zool. Syst. Evol. Res.* **34**, 145–152. (doi:10.1111/j.1439-0469.1996.tb00820.x)
121. Lipscomb DL. 1992 Parsimony, homology and the analysis of multistate characters. *Cladistics* **8**, 45–65. (doi:10.1111/j.1096-0031.1992.tb00050.x)
122. Rieppel CO. 1994 Homology, topology, and typology: the history of modern debates. In *Homology: the hierarchical basis of comparative biology* (ed. BK Hall), pp. 63–100. San Diego, CA: Academic Press.
123. Remane A. 1952 *Die Grundlagen des natürlichen Systems, der vergleichenden Anatomie und der Phylogenie*. Leipzig, Germany: Akademische Verlagsgesellschaft Geest & Portig K.-G.
124. Wiley EO. 1981 *Phylogenetics: the theory and practice of phylogenetic systematics*. New York, NY: John Wiley and Sons.
125. Wagner GP. 1999 A research program for testing the biological homology concept. In *Homology* (ed. BK Hall), pp. 125–134. Chichester, UK: John Wiley.
126. Richter S *et al.* 2010 Invertebrate neurophylogeny: suggested terms and definitions for a neuroanatomical glossary. *Front. Zool.* **7**, 29. (doi:10.1186/1742-9994-7-29)
127. Hanks MC, Loomis CA, Harris E, Tong CX, Anson-Cartwright L, Auerbach A, Joyner A. 1998 *Drosophila engrailed* can substitute for mouse *Engrailed1* function in mid-hindbrain, but not limb development. *Development* **125**, 4521–4530.
128. Hirth F, Therianos S, Loop T, Gehring WJ, Reichert H, Furukubo-Tokunaga K. 1995 Developmental defects in brain segmentation caused by mutations of the homeobox genes *orthodenticle* and *empty spiracles* in *Drosophila*. *Neuron* **15**, 769–778. (doi:10.1016/0896-6273(95)90169-8)
129. Aspöck G, Ruvkun G, Bürglin TR. 2003 The *Caenorhabditis elegans* *ems* class homeobox gene *ceh-2* is required for M3 pharynx motoneuron function. *Development* **130**, 3369–3378. (doi:10.1242/dev.00551)
130. Martín-Durán JM, Wolff GH, Strausfeld NJ, Hejnol A. In press. The larval nervous system of the penis worm *Priapulid caudatus* (Ecdysozoa). *Phil. Trans. R. Soc. B* **371**, 20150050. (doi:10.1098/rstb.2015.0050)
131. Telford MJ, Bourlat SJ, Economou A, Papillon D, Rota-Stabelli O. 2008 The evolution of the Ecdysozoa. *Phil. Trans. R. Soc. B* **363**, 1529–1537. (doi:10.1098/rstb.2007.2243)
132. Yamasaki H, Fujimoto S, Miyazaki K. 2015 Phylogenetic position of Loricifera inferred from nearly complete 18S and 28S rRNA gene sequences. *Zool. Lett.* **1**, 1–9. (doi:10.1186/s40851-015-0017-0)
133. Sørensen MV, Hebsgaard MB, Heiner I, Glenner H, Willerslev E, Kristensen RM. 2008 New data from an enigmatic phylum: evidence from molecular sequence data supports a sister-group relationship between Loricifera and Nematomorpha. *J. Zool. Syst. Evol. Res.* **46**, 231–239. (doi:10.1111/j.1439-0469.2008.00478.x)
134. Campbell LI *et al.* 2011 MicroRNAs and phylogenomics resolve the relationships of Tardigrada and suggest that velvet worms are the sister group of Arthropoda. *Proc. Natl Acad. Sci. USA* **108**, 15 920–15 924. (doi:10.1073/pnas.1105499108)
135. Rota-Stabelli O, Campbell L, Brinkmann H, Edgecombe GD, Longhorn SJ, Peterson KJ, Pisani D, Philippe H, Telford MJ. 2011 A congruent solution to arthropod phylogeny: phylogenomics, microRNAs and morphology support monophyletic Mandibulata. *Proc. R. Soc. B* **278**, 298–306. (doi:10.1098/rspb.2010.0590)
136. Webster BL, Copley RR, Jenner RA, Mackenzie-Dodds JA, Bourlat SJ, Rota-Stabelli O, Littlewood DTJ, Telford MJ. 2006 Mitogenomics and phylogenomics reveal priapulid worms as extant models of the ancestral Ecdysozoan. *Evol. Dev.* **8**, 502–510. (doi:10.1111/j.1525-142X.2006.00123.x)
137. Rota-Stabelli O, Daley AC, Pisani D. 2013 Molecular timetrees reveal a Cambrian colonization of land and a new scenario for ecdysozoan evolution. *Curr. Biol.* **23**, 392–398. (doi:10.1016/j.cub.2013.01.026)
138. Nielsen C. 2012 *Animal evolution*. Oxford, UK: Oxford University Press.
139. Schmidt-Rhaesa A, Rothe BH. 2014 Brains in Gastrotricha and Cycloneuralia—a comparison. In *Deep metazoan phylogeny: the backbone of the tree of life. New insights from analyses of molecules, morphology, and theory of data analysis* (eds JW Wägele, T Bartolomaeus), pp. 93–104. Berlin, Germany: Walter De Gruyter GmbH.
140. Schmidt-Rhaesa A, Henne S. 2015 Cycloneuralia (Nematoda, Nematomorpha, Priapulida, Kinorhyncha, Loricifera). In *Structure and evolution of invertebrate nervous systems* (eds A Schmidt-Rhaesa, S Harzsch, G Purschke), pp. 62–66. Oxford, UK: Oxford University Press.
141. Herranz M, Pardos F, Boyle MJ. 2013 Comparative morphology of serotonergic-like immunoreactive elements in the central nervous system of kinorhynch (Kinorhyncha, Cyclorhagida). *J. Morphol.* **274**, 258–274. (doi:10.1002/jmor.20089)
142. Rothe BH, Schmidt-Rhaesa A. 2010 Structure of the nervous system in *Tubiluchus troglodytes* (Priapulida). *Inv. Biol.* **129**, 39–58. (doi:10.1111/j.1744-7410.2010.00185.x)
143. Kristensen RM. 1991 Loricifera. In *Microscopic anatomy of invertebrates* (eds FW Harrison, EE Ruppert), pp. 351–375. New York, NY: Wiley-Liss.
144. Malakhov AA. 1994 *Nematodes. Structure, development, classification, and phylogeny*. Washington, DC: Smithsonian Institution Press.
145. Schmidt-Rhaesa A. 1996 The nervous system of *Nectonema munidae* and *Gordius aquaticus*, with implications for the ground pattern of the Nematomorpha. *Zoomorphology* **116**, 133–142. (doi:10.1007/BF02526945)
146. Schmidt-Rhaesa A. 1996 Ultrastructure of the anterior end in three ontogenetic stages of *Nectonema munidae* (Nematomorpha). *Acta Zool.* **77**, 267–278. (doi:10.1111/j.1463-6395.1996.tb01271.x)
147. Strausfeld NJ, Hirth F. 2013 Homology versus convergence in resolving transphyletic correspondences of brain organization. *Brain Behav. Evol.* **82**, 215–219. (doi:10.1159/000356102)
148. Scholtz G. 2015 Perspective—heads and brains in arthropods: 40 years after the ‘endless dispute’. In *Structure and evolution of invertebrate nervous systems* (eds A Schmidt-Rhaesa, S Harzsch, G Purschke), pp. 402–410. Oxford, UK: Oxford University Press.
149. Persson DK, Halberg KA, Jørgensen A, Møbjerg N, Kristensen RM. 2012 Neuroanatomy of *Halobiotus crispae* (Eutardigrada: Hypsibiidae): tardigrade brain structure supports the clade Panarthropoda. *J. Morphol.* **273**, 1227–1245. (doi:10.1002/jmor.20054)
150. Mayer G, Kauschke S, Rüdiger J, Stevenson PA. 2013 Neural markers reveal a one-segmented head in tardigrades (water bears). *PLoS ONE* **8**, e59090. (doi:10.1371/journal.pone.0059090)
151. Schulze C, Neves RC, Schmidt-Rhaesa A. 2014 Comparative immunohistochemical investigation on the nervous system of two species of Arthrotardigrada (Heterotardigrada, Tardigrada). *Zool. Anz.* **253**, 225–235. (doi:10.1016/j.jcz.2013.11.001)
152. Schulze C, Schmidt-Rhaesa A. 2013 The architecture of the nervous system of *Echiniscus testudo* (Echiniscoidea, Heterotardigrada). *J. Limnol.* **72**, 44–53. (doi:10.4081/jlimnol.2013.s1.e6)
153. Smith FW, Jockusch EJ. 2014 The metameric pattern of *Hypsibius dujardini* (Eutardigrada) and its relationship to that of other panarthropods. *Front. Zool.* **11**, 66. (doi:10.1186/s12983-014-0066-9)
154. Zantke J, Wolff C, Scholtz G. 2008 Three-dimensional reconstruction of the central nervous system of *Macrobiotus hufelandi* (Eutardigrada, Parachela): implications for the phylogenetic position of Tardigrada. *Zoomorphology* **127**, 21–36. (doi:10.1007/s00435-007-0045-1)
155. Gross V, Mayer G. 2015 Neural development in the tardigrade *Hypsibius dujardini* based on anti-acetylated α -tubulin immunolabeling. *Evodevo* **6**, 12. (doi:10.1186/s13227-015-0008-4)
156. Hejnol A, Schnabel R. 2005 The eutardigrade *Thulinia stephaniae* has an indeterminate development and the potential to regulate early blastomere ablations. *Development* **132**, 1349–1361. (doi:10.1242/dev.01701)

157. Eriksson BJ, Budd GE. 2000 Onychophoran cephalic nerves and their bearing on our understanding of head segmentation and stem-group evolution of Arthropoda. *Arthropod. Struct. Dev.* **29**, 197–209. (doi:10.1016/S1467-8039(00)00027-X)
158. Strausfeld NJ, Strausfeld CM, Stowe S, Rowell D, Loesel R. 2006 The organization and evolutionary implications of neuropils and their neurons in the brain of the onychophoran *Euperipatoides rowlli*. *Arthropod. Struct. Dev.* **35**, 169–196. (doi:10.1016/j.asd.2006.06.002)
159. Mayer G, Whittington PM, Sunnucks P, Pflüger HJ. 2010 A revision of brain composition in Onychophora (velvet worms) suggests that the tritocerebrum evolved in arthropods. *BMC Evol. Biol.* **10**, 255. (doi:10.1186/1471-2148-10-255)
160. Martin C, Mayer G. 2015 Insights into the segmental identity of post-oral commissures and pharyngeal nerves in Onychophora based on retrograde fills. *BMC Neurosci.* **16**, 53. (doi:10.1186/s12868-015-0191-1)
161. Brenneis G. 2015 Pycnogonida (Pantopoda). In *Structure and evolution of invertebrate nervous systems* (eds A Schmidt-Rhaesa, S Harzsch, G Purschke), pp. 419–427. Oxford, UK: Oxford University Press.
162. Mittmann B, Scholtz G. 2003 Development of the nervous system in the 'head' of *Limulus polyphemus* (Chelicerata: Xiphosura): morphological evidence for a correspondence between the segments of the chelicerae and of the (first) antennae of Mandibulata. *Dev. Genes Evol.* **213**, 9–17. (doi:10.1007/s00427-002-0285-5)
163. Andrade SC, Novo M, Kawauchi GY, Worsaae K, Pleijel F, Giribet G, Rouse GW. 2015 Articulating 'Archiannelids': phylogenomics and annelid relationships, with emphasis on Meiofaunal taxa. *Mol. Biol. Evol.*, pmsv157. (doi:10.1093/molbev/msv157)
164. Struck TH, Golombek A, Weigert A, Franke FA, Westheide W, Purschke G, Bleidorn C, Halanych KM. 2015 The evolution of annelids reveals two adaptive routes to the interstitial realm. *Curr. Biol.* **25**, 1993–1999. (doi:10.1016/j.cub.2015.06.007)
165. Martín-Durán JM, Janssen R, Wennberg S, Budd GE, Hejnol A. 2012 Deuterostomic development in the protostome *Priapulius caudatus*. *Curr. Biol.* **22**, 2161–2166. (doi:10.1016/j.cub.2012.09.037)
166. Steinmetz PRH, Zelada-Gonzales F, Burgtorf C, Wittbrodt J, Arendt D. 2007 Polychaete trunk neuroectoderm converges and extends by mediolateral cell intercalation. *Proc. Natl Acad. Sci. USA* **104**, 2727–2732. (doi:10.1073/pnas.0606589104)
167. Giribet G, Dunn CW, Edgecombe GD, Hejnol A, Martindale MQ, Rouse GW. 2009 Assembling the spiralian tree of life. In *Animal evolution: genes, genomes, fossils and trees* (eds MJ Telford, DTJ Littlewood), pp. 52–64. Oxford, UK: Oxford University Press.
168. Hejnol A. 2010 A twist in time—the evolution of spiral cleavage in the light of animal phylogeny. *Integr. Comp. Biol.* **50**, 695–706. (doi:10.1093/icb/lcq103)
169. Lartillot N, Brinkmann H, Philippe H. 2007 Suppression of long-branch attraction artefacts in the animal phylogeny using a site-heterogeneous model. *BMC Evol. Biol.* **7**(Suppl. 1), S4. (doi:10.1186/1471-2148-7-S1-S4)
170. Vinther J. 2015 Animal evolution: when small worms cast long phylogenetic shadows. *Curr. Biol.* **25**, R753–R773. (doi:10.1016/j.cub.2015.07.003)
171. Wey-Fabrizius AR, Herlyn H, Rieger B, Rosenkranz D, Witek A, Welch DB, Ebersberger I, Hankeln T. 2014 Transcriptome data reveal Syndermatan relationships and suggest the evolution of endoparasitism in Acanthocephala via an epizoic stage. *PLoS ONE* **9**, e88618. (doi:10.1371/journal.pone.0088618)
172. Müller MCM, Sterrer W. 2004 Musculature and nervous system of *Gnathostomula peregrina* (Gnathostomulida) shown by phalloidin labeling, immunohistochemistry, and cLSM, and their phylogenetic significance. *Zoomorphology* **123**, 169–177. (doi:10.1007/s00435-004-0099-2)
173. Schmidt-Rhaesa A. 2015 Gnathostomulida. In *Structure and evolution of invertebrate nervous systems* (eds A Schmidt-Rhaesa, S Harzsch, G Purschke), pp. 118–122. Oxford, UK: Oxford University Press.
174. Kristensen RM, Nørrevang A. 1977 On the fine structure of *Rastrognathia macrostoma* gen. et sp. n. placed in Rastrognathiidae fam. n. (Gnathostomulida). *Zool. Scr.* **6**, 27–41. (doi:10.1111/j.1463-6409.1977.tb00757.x)
175. Bekkouché N, Kristensen RM, Hejnol A, Sorensen MV, Worsaae K. 2014 Detailed reconstruction of the musculature in *Limnognathia maerski* (Micrognathozoa) and comparison with other Gnathifera. *Front. Zool.* **11**, 71. (doi:10.1186/s12983-014-0071-z)
176. Kristensen RM, Funch P. 2000 Micrognathozoa: a new class with complicated jaws like those of Rotifera and Gnathostomulida. *J. Morphol.* **246**, 1–49. (doi:10.1002/1097-4687(200010)246:1<1::AID-JMOR1>3.0.CO;2-D)
177. Clément P, Wurdak E. 1991 Rotifera. In *Microscopic anatomy of invertebrates* (eds FW Harrison, EE Ruppert), pp. 219–297. New York, NY: Wiley Liss Inc.
178. Fontaneto D, De Smet WH. 2015 Rotifera. In *Gastrotricha and Gnathifera* (ed. A Schmidt-Rhaesa), pp. 217–300. Berlin, Germany: Walter de Gruyter.
179. Leasi F, Pennati R, Ricci C. 2009 First description of the serotonergic nervous system in a bdelloid rotifer: *Macrotrachela quadricornifera* Milne 1886 (Philodinidae). *Zool. Anz.* **248**, 47–55. (doi:10.1016/j.jcz.2008.10.002)
180. Rothe BH, Schmidt-Rhaesa A, Kieneker A. 2011 The nervous system of *Neodasys chaetonotoideus* (Gastrotricha: *Neodasys*) revealed by combining confocal laserscanning and transmission electron microscopy: evolutionary comparison of neuroanatomy within the Gastrotricha and basal Protostomia. *Zoomorphology* **130**, 51–84. (doi:10.1007/s00435-011-0123-2)
181. Schmidt-Rhaesa A, Rothe BH. 2015 Gastrotricha. In *Invertebrate nervous systems* (eds S Harzsch, A Schmidt-Rhaesa, G Purschke), pp. 141–148. Oxford, UK: Oxford University Press.
182. Rieger RM, Tyler S, Smith JPS, Rieger GE. 1991 Platyhelminthes: Turbellaria. In *Microscopic anatomy of invertebrates* (eds FW Harrison, BJ Bogitsch), pp. 7–140. New York, NY: John Wiley and Sons.
183. Egger B *et al.* 2015 A transcriptomic–phylogenomic analysis of the evolutionary relationships of flatworms. *Curr. Biol.* **25**, 1347–1353. (doi:10.1016/j.cub.2015.03.034)
184. Laumer CE, Hejnol A, Giribet G. 2015 Nuclear genomic signals of the 'microturbellarian' roots of platyhelminth evolutionary innovation. *eLife* **4**. (doi:10.7554/eLife.05503)
185. Ladurner P, Mair GR, Reiter D, Salvenmoser W, Rieger RM. 1997 Serotonergic nervous system of two macrostomid species: recent or ancient divergence? *Inv. Biol.* **116**, 178–191. (doi:10.2307/3226895)
186. Wikgren MC, Reuter M. 1985 Neuropeptides in a microturbellarian—whole mount immunocytochemistry. *Peptides* **6**, 471–475. (doi:10.1016/0196-9781(85)90416-4)
187. Reuter M, Mäntylä K, Gustafsson MKS. 1998 Organization of the orthogon—main and minor nerve cords. *Hydrobiologia* **383**, 175–182. (doi:10.1023/A:1003478030220)
188. Quiroga SY, Bonilla EC, Bolaños DM, Carbayo F, Litvaitis MK, Brown FD. 2015 Evolution of flatworm central nervous systems: insights from polyclads. *Genet. Mol. Biol.* **38**, 233–248. (doi:10.1590/S1415-475738320150013)
189. Reuter M, Halton DW. 2001 Comparative neurobiology of Platyhelminthes. In *Interrelationships of the Platyhelminthes* (eds DTJ Littlewood, RA Bray), pp. 239–249. London, UK: Taylor and Francis.
190. Kocot KM *et al.* 2011 Phylogenomics reveals deep molluscan relationships. *Nature* **477**, 452–456. (doi:10.1038/nature10382)
191. Smith SA, Wilson NG, Goetz FE, Feehery C, Andrade SC, Rouse GW, Giribet G, Dunn CW. 2011 Resolving the evolutionary relationships of molluscs with phylogenomic tools. *Nature* **480**, 364–367. (doi:10.1038/nature10526)
192. Struck TH *et al.* 2011 Phylogenomic analyses unravel annelid evolution. *Nature* **471**, 95–98. (doi:10.1038/nature09864)
193. Weigert A *et al.* 2014 Illuminating the base of the annelid tree using transcriptomics. *Mol. Biol. Evol.* **31**, 1391–1401. (doi:10.1093/molbev/msu080)
194. Andrade SC, Montenegro H, Strand M, Schwartz ML, Kajihara H, Norenburg JL, Turbeville JM, Sundberg P, Giribet G. 2014 A transcriptomic approach to ribbon worm systematics (Nemertea): resolving the pilidiophora problem. *Mol. Biol. Evol.* **31**, 3206–3215. (doi:10.1093/molbev/msu253)
195. Jenner RA, Wills MA. 2007 The choice of model organisms in evo-devo. *Nat. Rev. Genet.* **8**, 311–319. (doi:10.1038/nrg2062)
196. Sigwart JD, Sumner-Rooney LH. 2015 Mollusca: Caudofoveata, Monoplacophora, Polyplacophora, Scaphopoda, and Solenogastres. In *Structure and evolution of invertebrate nervous systems* (eds A Schmidt-Rhaesa, S Harzsch, G Purschke), pp. 172–189. Oxford, UK: Oxford University Press.
197. Salvini-Plawen L. 1991 Origin, phylogeny and classification of the phylum Mollusca. *Iberus* **9**, 1–33.

198. Haszprunar G. 1992 The first molluscs—small animals. *Boll. Zool.* **59**, 1–16. (doi:10.1080/11250009209386641)
199. Beckers P. 2012 *Nemertean nervous systems: a comparative analysis*. Bonn, Germany: Rheinische Friedrich-Wilhelm Universität Bonn.
200. Beckers P, Faller S, Loesel R. 2011 Lophotrochozoan neuroanatomy: an analysis of the brain and nervous system of *Lineus viridis* (Nemertea) using different staining techniques. *Front. Zool.* **8**, 17. (doi:10.1186/1742-9994-8-17)
201. Beckers P, Loesel R, Bartolomaeus T. 2013 The nervous systems of basally branching nemertea (Palaeonemertea). *PLoS ONE* **8**, e66137. (doi:10.1371/journal.pone.0066137)
202. Beckers P, von Döhren J. 2015 Nemertea (Nemertini). In *Structure and evolution of invertebrate nervous systems* (eds A Schmidt-Rhaesa, S Harzsch, G Purschke), pp. 148–165. Oxford, UK: Oxford University Press.
203. Purschke G. 2015 Annelida: basal groups and Pleistoannelida. In *Structure and evolution of invertebrate nervous systems* (eds A Schmidt-Rhaesa, S Harzsch, G Purschke), pp. 254–312. Oxford, UK: Oxford University Press.
204. Orrhage L, Müller MCM. 2005 Morphology of the nervous system of Polychaeta (Annelida). *Hydrobiologia* **535/536**, 79–111. (doi:10.1007/s10750-004-4375-4)
205. Purschke G, Bleidorn C, Struck T. 2014 Systematics, evolution, phylogeny of Annelida—a morphological perspective. *Mem. Mus. Vic.* **71**, 247–269.
206. Beckers P, Quast B, Wallnisch C, Bartolomaeus T. 2014 Next generation histology in comparative animal morphology. Poster presented at *DZG 2014*, 11–14 September 2014, Georg-August-Universität, Göttingen, Germany.
207. Balavoine G, Adoutte A. 2003 The segmented urbilateria: a testable scenario. *Integr. Comp. Biol.* **43**, 137–147. (doi:10.1093/icb/43.1.137)
208. Clark RB. 1964 *Dynamics in metazoan evolution—the origin of the coelom and segments*. Oxford, UK: Calderon Press.
209. Lauri A, Brunet T, Handberg-Thorsager M, Fischer AH, Simakov O, Steinmetz PRH, Tomer R, Keller PJ, Arendt D. 2014 Development of the annelid axochord: insights into notochord evolution. *Science* **345**, 1365–1368. (doi:10.1126/science.1253396)
210. Martín-Durán JM, Hejnol A. 2015 The study of *Priapulus caudatus* reveals conserved molecular patterning underlying different gut morphogenesis in the Ecdysozoa. *BMC Biol.* **13**, 29. (doi:10.1186/s12915-015-0139-z)
211. Bang R, DeSalle R, Wheeler W. 2000 Transformationalism, taxism, and developmental biology in systematics. *Syst. Biol.* **49**, 19–27. (doi:10.1080/10635150050207366)
212. Scholtz G. 2010 Deconstructing morphology. *Acta Zool.* **91**, 44–63. (doi:10.1111/j.1463-6395.2009.00424.x)