

# Cre-activity in the Liver: Transgenic Approaches to Targeting Hepatic Nonparenchymal Cells

Stephen N. Greenhalgh, Kylie P. Conroy, and Neil C. Henderson

**Rapid evolution in transgenic (Tg) mouse technology now permits cell-specific and temporal control of fluorescent cell-labeling and gene inactivation. Here, we discuss the principal strategies that have been utilized to target, label, and manipulate hepatic nonparenchymal cells, with emphasis on the utility of constitutive and inducible Cre-lox systems. We summarize key findings of studies employing Tg technology to target hepatic stellate cells, myofibroblasts, liver sinusoidal endothelial cells, and macrophages to illustrate the power of these approaches in identifying cell-specific molecular mechanisms critical to the pathophysiology of liver disease. Increasing adoption of Tg techniques will help to answer fundamental questions regarding the pathogenesis of hepatic diseases and provide the mechanistic rationale to allow identification of novel drug targets, ultimately translating into effective therapies for patients with liver disease. (HEPATOLOGY 2015;61:2091-2099)**

**T**ransgenic (Tg) mouse technology has evolved rapidly since the turn of the century, facilitating major advances in our understanding of hepatic pathobiology in murine models of human liver disease. Initial Tg manipulations were restricted to global gene knockout, greatly limiting the study of genes with vital functions during development owing to embryonic or perinatal lethality. These limitations have largely been circumvented through development of techniques, such as Cre-lox, that permit targeted genetic manipulation, allowing both spatial and temporal control of gene expression in mice. Conditional deletion of targeted genomic DNA sequences has become a standard approach, facilitating both interrogation of cell-specific gene function and detailed study of cell ontogeny through fate mapping. Within the liver, these techniques have revolutionized our ability to interrogate the roles of specific genes and cell lineages in a broad range of hepatic disease processes. Here, we discuss how this burgeoning field is being harnessed to explore the myriad roles of hepatic non-

parenchymal cells (NPCs) in the pathophysiology of liver disease.

## Tg Systems

### Cre-lox

Developed in the 1980s, the Cre-lox system is currently one of the most widely used techniques for genetic manipulation in mice.<sup>1</sup> The bacteriophage P1 *cre* (cyclization recombinase) gene catalyzes DNA recombination between pairs of *loxP* (locus of X-over in P1) sites. Spatial expression of Cre is achieved using cell-specific *cre* promoters, whereas inducible systems can restrict expression temporally. The location and orientation of the *loxP* sites dictate whether Cre initiates deletion, inversion, or translocation of the “floxed” (flanked by *loxP*) locus. Typically, *loxP* sites are inserted a short distance apart on the same chromosome, in the same orientation, resulting in excision of the floxed segment and preventing successful production of a functional gene product (Fig. 1A).

*Abbreviations: aHSCs, activated HSCs;  $\alpha$ -SMA, alpha-smooth muscle actin; BDL, bile duct ligation; Col, collagen; Cre, cyclization recombinase; CSF1R, colony-stimulating factor 1 receptor; CXCR, C-X-C chemokine receptor; DCs, dendritic cells; eGFP, enhanced green fluorescent protein; FGFRI, fibroblast growth factor receptor 1; Flp, flippase; FRT, flippase recognition target; GFAP, glial fibrillary acidic protein; GFP, green fluorescent protein; HSC, hepatic stellate cell; KC, Kupffer cell; loxP, locus of X-over in P1; Lrat, lecithin-retinol acyltransferase; LSEC, liver sinusoidal endothelial cell; LysM, M lysozyme; mTomG, membrane-targeted tdTomato membrane-targeted eGFP; NPCs, nonparenchymal cells; PDGFRB, platelet-derived growth factor receptor beta; PH, partial hepatectomy; PPAR- $\gamma$ , peroxisome proliferator-activator receptor gamma; qHSCs, quiescent HSCs; TA, tetracycline activator; Tet, tetracycline; Tg, transgenic; VSMCs, vascular smooth muscle cells; YFP, yellow fluorescent protein.*

*From the MRC Center for Inflammation Research, The Queen's Medical Research Institute, University of Edinburgh, Edinburgh, UK*

*Received September 12, 2014; accepted November 8, 2014.*

*The authors acknowledge the support of the Wellcome Trust.*

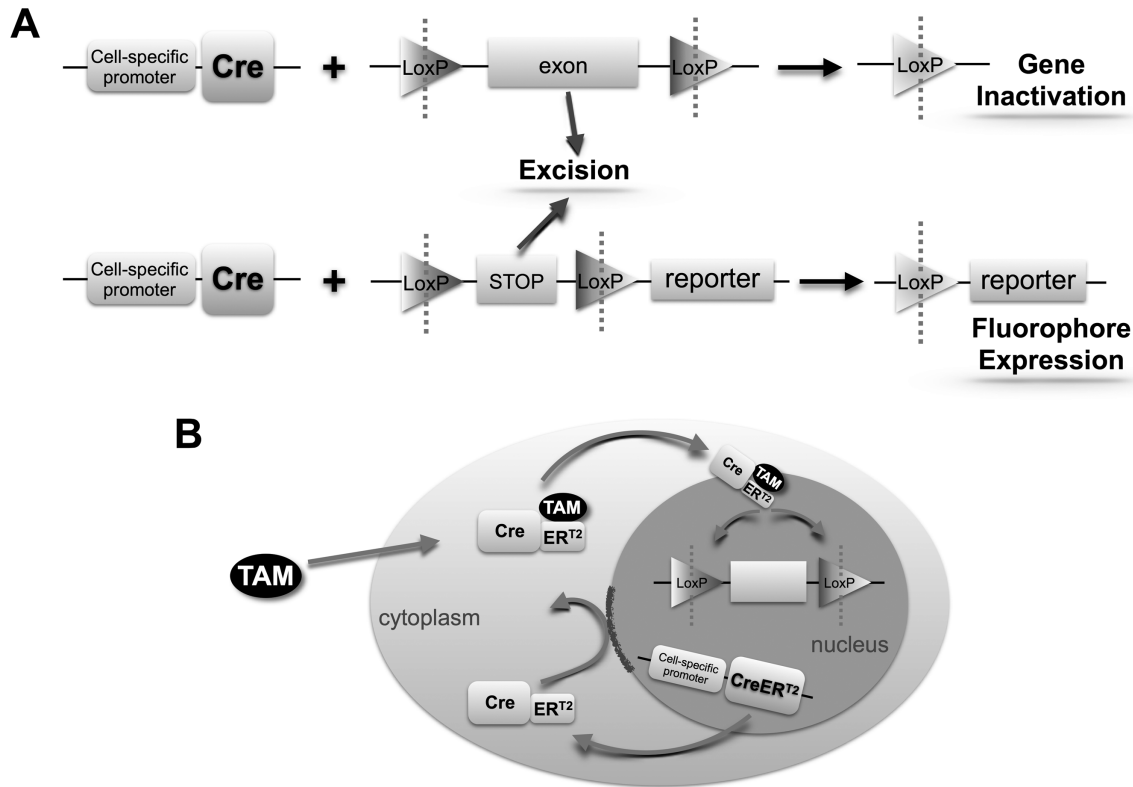


Fig. 1. Schematic diagram of cell-specific Cre recombinase-induced gene inactivation and fluorescent reporter expression systems. (A) Cell-specific expression of Cre recombinase results in excision of *loxP*-flanked sequences leading to gene inactivation or fluorescent reporter expression. (B) Spatiotemporal regulation of Cre activity: tamoxifen (TAM) administration permits entry of the Cre-ER<sup>T2</sup> complex into the nucleus, allowing excision of *loxP*-flanked sequences.

Alternatively, a floxed STOP codon may be inserted, whereby transcription of the downstream sequence, commonly a fluorescent reporter construct, only proceeds following Cre-mediated excision (Fig. 1A). Thus, Cre-lox permits intrinsic cellular labeling through cell-specific and, if required, temporally restricted, fluorescent protein expression. These manipulations require at least two Tg modifications, inserting Cre and *loxP* sites respectively, and are achieved by interbreeding strains carrying a single transgene. Therefore, this permits essentially any combination of Cre driver and floxed allele.

### “Conditional” Cre Expression

Cell-specific Cre expression is achieved using a cell-specific promoter element. In constitutive systems, pro-

motor activation leads directly to Cre expression and recombination. However, constitutive systems do not permit a defined cohort of cells to be labeled at a specific point in time (temporal Cre expression), which negates their use in true fate-mapping experiments. Furthermore, constitutive Cre-driven ablation of developmentally important genes, even if cell specific, has the potential for embryonic lethality. As such, use of inducible Cre-lox systems, in which an exogenous stimulus is required to permit Cre-mediated recombination, has increased in recent years. This temporal regulation of Cre can be mediated through systems including Cre fusion proteins or the tetracycline (Tet) system.

The commonly used tamoxifen-inducible system employs a Cre fusion protein, CreER<sup>T2</sup>, containing a

Address reprint requests to: Neil Henderson, B.Sc. (Hons.), M.B.Ch.B., Ph.D., MRC Center for Inflammation Research, The Queen's Medical Research Institute, University of Edinburgh, 47 Little France Crescent, Edinburgh, EH16 4TJ, UK. E-mail: Neil.Henderson@ed.ac.uk; fax: +44(0)131 2429101.

Copyright © 2015 The Authors. HEPATOLOGY published by Wiley Periodicals, Inc., on behalf of the American Association for the Study of Liver Diseases. This is an open access article under the terms of the Creative Commons Attribution License, which permits use, distribution and reproduction in any medium, provided the original work is properly cited. [The copyright line for this article was changed on August 3, 2015, after first online publication.]

View this article online at [wileyonlinelibrary.com](http://wileyonlinelibrary.com).

DOI 10.1002/hep.27606

The copyright line for this article was changed on August 3, 2015, after first online publication.

mutated ligand-binding domain of the estrogen receptor.<sup>2</sup> This construct prevents Cre from entering the nucleus and driving recombination until exogenously administered tamoxifen binds to the fusion protein (Fig. 1B). Two principle versions of the Tet-inducible system exist: Tet-ON and Tet-OFF.<sup>2</sup> Both rely on the insertion of *TetO* operator sequences upstream from a gene of interest and the separate incorporation of a tetracycline activator (TA) protein ( $\tau$ TA or  $r\tau$ TA) into the genome. Tet administration, usually as doxycycline, then either promotes (Tet-ON) or prevents (Tet-OFF) expression of the gene of interest. The Tet system's main strength is the potential for reversible gene (in)activation. It can also be combined with Cre-lox, by either placing *cre* downstream of the *TetO* sequences or using Cre to switch on  $r\tau$ TA or  $\tau$ TA transcription.

Both tamoxifen and Tet systems require careful dose titration to maximize recombination efficiency while minimizing unwanted side effects. Low-level background recombination and poor recombination efficiency can be problematic. Tamoxifen may persist in the liver for 1-4 weeks after injection, and higher doses can cause nonspecific recombination.<sup>3</sup> Either may confound accurate fate mapping by labeling additional cell types. As such, experimental design must be carefully considered, with use of appropriate controls crucial to confirm that observed effects are the result of the intended Cre-lox manipulation.

### ***Viral Vector-Mediated Regulation of Cre Expression***

Viral vectors can also be employed to enable transgene expression in specific cell types in mice. Recombinant adeno-associated viruses are nonpathogenic helper-dependent parvoviruses with viral encoding proteins replaced by a gene or construct of interest, such as *cre*. This system has been utilized for elegant fate-mapping studies in the liver using a hepatocyte-targeted, adeno-associated virus containing Cre.<sup>4,5</sup>

### ***Flp-FRT***

Analogous to Cre-lox, but of fungal rather than viral origin, Flp-FRT is an alternative system in which targeted genetic manipulation occurs through flippase (Flp)-mediated recombination of inserted flippase recognition target (FRT) sites.<sup>2</sup> The recombination efficiency and thermostability of Flp have lagged behind that of Cre, although adoption of Flp variants, such as FLPe and FLPo, have greatly increased its utility.<sup>2,6</sup> The system is already commonly used to remove antibiotic resistance genes during generation of Tg mouse strains. Although not yet widely adopted in the liver,

use of Flp-FRT may well expand in coming years. Specifically, combination with Cre-lox allows independent or sequential gene manipulation, which may greatly aid modeling of cancer development in mice.<sup>7</sup>

### ***Reporter Systems***

Cre-lox is an extremely powerful tool to label cells permanently and heritably, as required for fate-mapping studies. The ROSA26 locus is frequently used for the generation of "Rosa26R" reporter strains owing to its robust and ubiquitous expression.<sup>8</sup> Common fluorescent reporter constructs (Fig. 2) include ZsGreen, TdTomato, membrane-targeted tdTomato membrane-targeted enhanced green fluorescent protein (mTmG), variants of enhanced green fluorescent protein (eGFP), and multicolor reporters, such as Confetti.<sup>9</sup> Fluorescent constructs are constantly evolving to maximize fluorescence and fidelity and incorporate additional refinements, such as localization tags to allow cytosolic, membrane, and nuclear targeting.<sup>9</sup> Fluorescent reporters also permit cell sorting without additional antibody staining and are of particular use when isolating cell types present at low frequency.

### ***Potential Cre Pitfalls***

Off-target effects of Cre ("Cre toxicity") have been reported and may occur through a variety of mechanisms, including insertion site activation or silencing, undocumented gene expression patterns, incomplete incorporation of driver construct regulatory elements, transgene silencing, and germline expression.<sup>10</sup> Unintended Cre expression ("leakiness") in nontargeted lineages or at inappropriate times may confound the conclusions of both gene deletion and fate-mapping experiments. Therefore, it is essential that the recombination efficiency (sensitivity) and expression pattern (specificity) for each Cre strain is carefully characterized and appropriate controls are selected.

## **Targeting Hepatic NPCs**

Defining the role of NPCs in liver disease is vital to understand the pathobiology driving disease progression, particularly given the common pathway of inflammation to fibrosis to organ failure shared by most chronic liver diseases. The Cre drivers currently utilized to target hepatic NPCs are listed in Table 1, and the principal cell targets are illustrated in Fig. 3. Harnessing Tg mouse technology in models of human liver disease should allow for the identification of novel therapeutic targets. Given that there is now strong evidence that liver fibrosis is reversible,<sup>11</sup> determining the



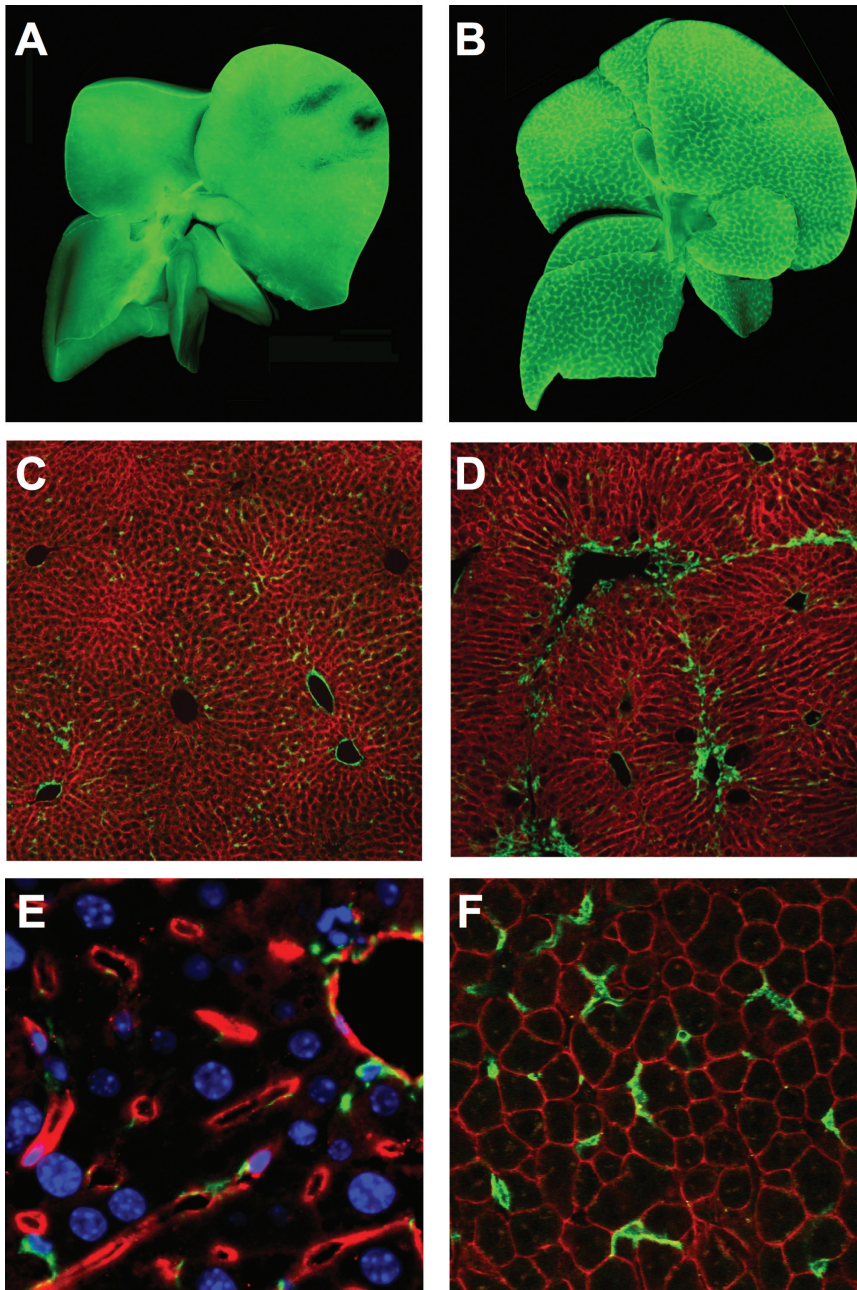


Fig. 2. Labeling of hepatic NPCs with fluorescent reporters. (A and B) Lrat-Cre-driven ZsGreen labeling of qHSCs and aHSCs in whole livers from untreated (A) and  $\text{CCl}_4$ -treated (B) mice. Adapted by permission from Macmillan Publishers Ltd: Nat Commun,<sup>12</sup> © 2013. (C and D) Pdgfrb-Cre-driven membranous GFP labeling (green) of qHSCs and aHSCs in Pdgfrb-Cre;mTmG mice following olive oil (control, C) or chronic  $\text{CCl}_4$  (D) administration. Adapted by permission from Macmillan Publishers Ltd: Nat Med,<sup>13</sup> © 2013. (E) Tamoxifen-induced Cdh5-PAC-CreER<sup>12</sup>-driven TdTomato (red) labeling of LSECs. Nuclei (blue),  $\alpha$ -SMA<sup>+</sup> cells (green). Adapted from Supplementary Information to a previous work,<sup>29</sup> by permission from the authors. (F) LysM-Cre-driven membranous GFP labeling (green) of macrophages in uninjured liver of LysM-Cre;mTmG mice (K.P.C. and N.C.H., unpublished data).

means by which hepatic stellate cells (HSCs), myofibroblasts, macrophages, and liver sinusoidal endothelial cells (LSECs) contribute to progression and regression of liver fibrosis, as well as hepatic regeneration, is of great importance.

#### Targeting HSCs and Myofibroblasts

Myofibroblasts are the principal profibrogenic cells in the liver, and there is now substantial *in vivo* evidence that HSCs, liver-specific pericytes residing in the space of Disse, are their major precursor.<sup>12</sup> Thus, HSCs and liver myofibroblasts are of profound interest in the search for potent antifibrotic treatments.

#### Lecithin-Retinol Acyltransferase

This HSC-targeting strategy capitalizes on their specialized role in retinoid storage, employing a Tg mouse in which Cre expression is driven by lecithin-retinol acyltransferase (Lrat), an enzyme with a key role in HSC lipid droplet formation.<sup>12</sup> In two fluorescent reporter systems, Lrat-Cre labeled 99% of HSCs (defined by vitamin A fluorescence on flow cytometry). Confocal microscopy revealed strong colocalization with the HSC markers, desmin and platelet-derived growth factor receptor beta (PDGFR $\beta$ ). Furthermore, Lrat protein expression was not identified in any other hepatic cell type. Only rare labeling of vascular smooth

**Table 1. Cre Drivers That May Be Used to Target Hepatic NPCs**

Hepatic NPC Type	Cre Driver	Cre System	Other Relevant Cells That May Be Targeted	References
HSC/myofibroblast	Lrat	c	VSMC	(12)
	Pdgfrb	c	VSMC	(13)
	GFAP	c, i	Ductular cell, cholangiocyte	(12,14-17)
Myofibroblast	$\alpha$ -SMA	i	VSMC	(17,19)
	Col $\alpha$ 1(I)	c		(16)
	Col $\alpha$ 2(I)	c, i		(16)
	Vimentin	i	HSC, VSMC, portal fibroblast	(25)
LSEC	Cdh5	i		(29)
KC/macrophage	LysM	c	Granulocyte, DC	(34,36-38)
	Csf1r	i	Granulocyte, DC	(42,43)

Abbreviations: c, constitutive; i, inducible.

muscle cells (VSMCs) was observed (<1 per 200 HSCs). Thus, this strategy targets HSCs efficiently and with high specificity.

In models of toxic, cholestatic, and fatty liver disease, Lrat-Cre-driven reporter expression showed that 82%-96% of hepatic myofibroblasts, in part identified by concomitant expression of a collagen (Col)-GFP transgene (in which GFP is expressed under control of the Col- $\alpha$ 1 (I) promoter/enhancer), derive from HSCs. However, HSCs did not function as epithelial progenitors. Combining Lrat-Cre with a Cre-inducible diphtheria toxin receptor resulted in marked HSC depletion and reduction in alpha-smooth muscle actin ( $\alpha$ -SMA) and profibrogenic gene expression after CCL<sub>4</sub> administration, again underlining the central role of HSCs in matrix deposition during liver fibrogenesis.

**Platelet-Derived Growth Factor Receptor Beta**

Pdgfrb-Cre mice represent an alternative strategy to target HSCs and myofibroblasts.<sup>13</sup> These mice express Cre under control of a *Pdgfrb* gene fragment and drive efficient recombination in both quiescent HSCs (qHSCs) and activated myofibroblasts with a high degree of specificity.<sup>13</sup> A Pdgfrb-BAC-eGFP reporter confirmed PDGFR $\beta$  expression by qHSCs and offers an additional genetic strategy for fluorescent labeling of HSCs. The Pdgfrb-Cre strategy identified a key role for myofibroblast  $\alpha$ v integrins in regulating fibrosis in several solid organs, including liver, lung, and kidney. Selective depletion of  $\alpha$ v integrins from HSCs protected mice from CCL<sub>4</sub>-induced hepatic fibrosis, and  $\alpha$ v-null HSCs had reduced ability to activate latent transforming growth factor beta. These findings were further validated using a small-molecule inhibitor to target  $\alpha$ v integrins, which ameliorated fibrosis in both liver and lung.

**Glial Fibrillary Acidic Protein**

A number of studies have used glial fibrillary acidic protein (GFAP)-Cre to target HSCs constitutively or inducibly.<sup>14-17</sup> However, it has been suggested that GFAP-Cre does not target HSCs with high specificity. Using a GFAP-Cre mouse (in which the human GFAP promoter controls Cre expression) crossed to a GFP reporter, GFAP, Cre-recombinase, and GFP reporter protein were detected in both HSCs and ductular cells of the biliary system.<sup>14</sup> GFAP ductular expression was also confirmed in human and rat liver. Subsequently, GFAP-Cre reporters have demonstrated labeling of bile ducts and cytokeratin 19-expressing

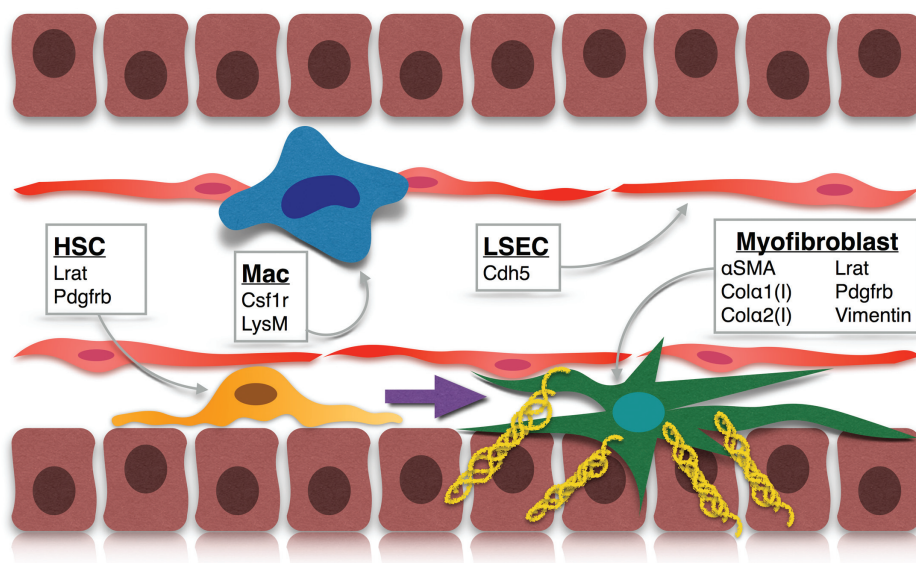


Fig. 3. Tg approaches to targeting NPCs in the liver. qHSC: Lrat and Pdgfrb; Mac (macrophage): Csf1r and LysM; LSEC: Cdh5; myofibroblast:  $\alpha$ -SMA, Col- $\alpha$ 1(I), Col- $\alpha$ 2(I), Lrat, Pdgfrb, and vimentin.

cholangiocytes, rather than desmin<sup>+</sup> HSCs or collagen-producing myofibroblasts.<sup>12</sup> Thus, it appears that GFAP-Cre does not target HSCs exclusively and its overall utility in murine studies of liver disease has still to be fully clarified.

### ***α-SMA***

Myofibroblasts are classically identified by  $\alpha$ -SMA expression.<sup>18</sup> An inducible Cre linked to  $\alpha$ -SMA ( $\alpha$ -SMA-Cre-ER<sup>T2</sup>) has been employed to target hepatic myofibroblasts.<sup>17,19</sup> High recombination rates (57%-81%) were achieved when using  $\alpha$ -SMA-Cre-ER<sup>T2</sup> to abrogate smoothened expression from  $\alpha$ -SMA<sup>+</sup> liver cells and loss of smoothened disrupted Hedgehog signaling and reduced fibrosis after bile duct ligation (BDL). Myofibroblast accumulation and hepatocyte proliferation were also inhibited following BDL or partial hepatectomy (PH). Interestingly, when  $\alpha$ -SMA-Cre-ER<sup>T2</sup> mice were crossed with a yellow fluorescent protein (YFP) reporter, YFP expression was reported in 8%-34% of hepatocytes following PH or BDL. This finding raised the possibility that the  $\alpha$ -SMA<sup>+</sup> myofibroblast population includes hepatocyte precursors, contrary to current dogma and subsequently challenged by alternative fate-mapping approaches.<sup>12,20,21</sup>

### ***Collagen***

Activated HSCs (aHSCs) are the major source of collagen within the liver,<sup>12,22,23</sup> and several Tg mouse strains exist in which collagen-expressing cells have been targeted.<sup>16</sup> In a Col-GFP Tg mouse, following 2 months of liver injury with CCl<sub>4</sub>, 92.6% of all GFP<sup>+</sup> cells in the nonparenchymal fraction were  $\alpha$ -SMA<sup>+</sup>, demonstrating good specificity for myofibroblasts. Further characterization of these GFP<sup>+</sup> cells suggested that HSCs (vitamin A<sup>+</sup> and desmin<sup>+</sup>) are the major source (92%) of myofibroblasts in this model of liver injury. Col-GFP mice have also enabled phenotypic analysis of the GFP<sup>+</sup> myofibroblast population following BDL.<sup>24</sup> In contrast to CCl<sub>4</sub> injury, vitamin A<sup>-</sup> cells initially (days 5 and 17 post-BDL) formed the majority of myofibroblasts following cholestatic liver injury. Additional characterization defined a Thy1<sup>+</sup>, elastin<sup>+</sup>, and desmin<sup>-</sup> population that was suggested to comprise portal fibroblasts.

Col- $\alpha$ 1(I) and Col- $\alpha$ 2(I) form the triple helix of collagen type I. In mice containing either the constitutive Col- $\alpha$ 1(I)-Cre or Col- $\alpha$ 2(I)-Cre transgenes, each crossed with a YFP reporter and following 2 months of CCl<sub>4</sub>, >92% of  $\alpha$ -SMA<sup>+</sup> cells and >94% of desmin<sup>+</sup> cells expressed YFP reporter, providing evi-

dence that recombination occurs with high efficiency in myofibroblasts/aHSCs.<sup>16</sup> Furthermore, when a tamoxifen-inducible Col- $\alpha$ 2(I)-CreER was crossed with a mTmG reporter, ~35% of desmin<sup>+</sup> HSCs were labeled by 7 daily doses of tamoxifen administered after 7 weeks of CCl<sub>4</sub>.

These three targeting-reporter strategies revealed that hepatic myofibroblasts can revert to an inactive HSC phenotype during regression of CCl<sub>4</sub>-induced fibrosis.<sup>16</sup> In the Col- $\alpha$ 2(I)-CreER targeting strategy, 14% of desmin<sup>+</sup> HSCs were GFP<sup>+</sup> 1 month after recovery, almost half the number labeled at peak fibrosis. Similar results were observed in a model of alcohol-induced liver fibrosis. Notably, Col-GFP mice receiving a second course of CCl<sub>4</sub>, after complete recovery from the first, developed more-severe fibrosis than previously untreated littermate controls receiving CCl<sub>4</sub> for the first time.

### ***Vimentin***

Vimentin is a cytoskeletal filament protein strongly expressed in mesenchymal cells, particularly myofibroblasts. A tamoxifen-inducible Cre under control of the vimentin promoter has been employed to track activation and reversion of HSCs and myofibroblasts following cessation of liver injury.<sup>25</sup> Minimal reporter expression was detected in uninjured liver, suggesting that this strategy is unsuitable for targeting qHSCs. Following chronic CCl<sub>4</sub> injury, ~25% of HSCs were labeled, with all labeled cells desmin<sup>+</sup>.

### ***Targeting LSECs***

LSECs comprise a unique endothelial subpopulation lining hepatic sinusoids. They differ both morphologically and functionally from the endothelia of other organs, with numerous fenestrae, no basement membrane, and a diverse range of roles.<sup>26</sup> Although there are currently no LSEC-specific Cre drivers, a general endothelial-targeted Cre driver has recently been successfully employed to target LSECs.

### ***Vascular Endothelial Cadherin***

Vascular endothelial cadherin is a cell-cell glycoprotein coded for by the *cdh5* gene and is the major cadherin expressed by LSECs.<sup>27</sup> Its key functions are endothelial cohesion and intercellular junction organization. A tamoxifen-inducible Cdh5-PAC-CreER<sup>T2</sup> strain, initially utilized in studies of angiogenesis,<sup>28</sup> successfully targets LSECs.<sup>29</sup> Following tamoxifen, TdTomato reporter expression was widespread in endothelial cells, but did not label desmin<sup>+</sup>, PDGFR $\beta$ <sup>+</sup>, or  $\alpha$ -SMA<sup>+</sup> cells. The Cdh5-PAC-



CreER<sup>T2</sup> strategy was then employed to knock down LSEC expression of C-X-C chemokine receptor (CXCR)4, CXCR7, or fibroblast growth factor receptor 1 (FGFR1). LSEC-specific *Cxcr7* knockdown significantly reduced hepatocyte proliferation after acute liver injury (single-dose CCl<sub>4</sub>) and, following chronic injury (BDL or chronic CCl<sub>4</sub>), impaired regeneration and promoted fibrosis. Conversely, loss of CXCR4 or FGFR1 in LSECs limited the profibrotic changes occurring after BDL, demonstrating that FGFR1-mediated CXCR4 up-regulation can counterbalance the LSEC proregenerative response and promote fibrosis. Thus, LSECs, through CXCR7 and CXCR4, play a key role in liver injury and repair.

### Targeting Macrophages in the Liver

Liver injury stimulates both activation of Kupffer cells (KCs), the liver-resident macrophages, and infiltration of circulating macrophages. Macrophage subpopulations are critical for both fibrogenesis and its resolution,<sup>30</sup> and it is therefore essential to dissect the underlying mechanisms regulating these divergent responses to injury. Currently, the greatest challenges in Tg targeting of liver macrophages are unresolved, namely, distinguishing macrophages from other cells of the myeloid lineage and the ability to target liver-resident macrophages separately from recruited macrophage populations.<sup>31</sup> Despite these limitations, the Tg approaches outlined below have proved useful tools for targeting myeloid cell populations within the liver.

### M Lysozyme

In mice, M lysozyme (LysM) is specifically expressed in myeloid cells and up-regulated following macrophage activation.<sup>32</sup> In the LysM-Cre mouse, recombination rates of 83%-95% were achieved in peritoneal macrophages positive for the classical macrophage marker, F4/80.<sup>33</sup> However, recombination was also observed in up to 99% of thioglycollate-elicited peritoneal neutrophils and a minority of dendritic cells (DCs). Recently, it was shown that variable LysM expression by macrophage subsets can result in differential recombination, with immature macrophages showing less recombination than mature, tissue-resident macrophages.<sup>34</sup> This work also elegantly demonstrated the differing roles of macrophage subpopulations during schistosomiasis-induced hepatic fibrosis.

LysM-Cre, combined with a GFP reporter, has also been employed to track loss of KC membrane integrity following Ad5 adenovirus infection,<sup>35</sup> and in further gene deletion studies.<sup>36-38</sup> Using LysM-Cre to knock down peroxisome proliferator-activator receptor

gamma (PPAR- $\gamma$ ) was shown to reduce macrophage expression of both PPAR- $\gamma$  isoforms to <25% of baseline and, in both acute and chronic CCl<sub>4</sub>-induced liver injury, these mice demonstrated increased liver injury and fibrosis.<sup>38</sup>

### Colony-Stimulating Factor 1 Receptor

The *c-fms* gene encodes colony-stimulating factor 1 receptor (CSF1R), expression of which is restricted to cells of the myeloid lineage (and placental trophoblasts).<sup>39</sup> The "MacGreen" knock-in mouse combines the proximal promoter and first intron of the *c-fms* gene with the coding sequence for eGFP, labeling macrophages throughout the mouse.<sup>39</sup> In liver, eGFP<sup>+</sup> cell location and morphology was similar to that of F4/80<sup>+</sup> cells, although simultaneous costaining was not performed in the initial characterization. Although transgene expression initially appeared restricted to monocytes and macrophages, expression in granulocytes<sup>40</sup> and DCs<sup>41</sup> was subsequently confirmed.

The *Csf1r* promoter has also been employed to target a tamoxifen-inducible Cre (Csf1r-Mer-iCre-Mer) to myeloid cells, and its initial characterization demonstrated a reduction in peripheral blood monocyte vascular endothelial growth factor A expression to 16% of baseline.<sup>42</sup> No reduction in expression was observed in other circulating immune cells, including granulocytes. A key advantage of the Csf1r-Mer-iCre-Mer mouse is that it permits both cell-specific and temporal control of Cre-mediated recombination. This has enabled pulse labeling and lineage tracing of yolk sac macrophages in developing embryos, distinguishing them from macrophages derived from hematopoietic stem cells later in gestation.<sup>43</sup> Although a relatively small proportion (0.3%-6.3%) of tissue macrophages were labeled by this strategy, a similar approach could allow macrophage targeting at specific time points during liver injury and regeneration and may therefore be useful in fate-mapping studies of KCs.

### Challenges and Future Directions

Tg mouse technology continues to evolve rapidly, advancing our understanding of the cellular and molecular mechanisms regulating hepatic injury, wound healing, and regeneration. Novel Cre drivers, with improved specificity and efficiency, and increasing adoption of inducible Cre strategies will enable high-fidelity interrogation of the precise role of individual cell lineages during the development and resolution of liver disease. Fluorescent reporter systems also offer exciting potential for further exploitation; in addition

to fluorescent cell sorting, combining fluorescent reporters with techniques such as laser capture microdissection, single-cell real-time polymerase chain reaction and even single-cell RNA sequencing, offers enormous opportunities.

However, it is critically important that, as Tg technology advances, a rigorous approach to its utilization is applied in order to ensure that robust, high-quality data are generated. Excellent catalogs of available Tg strains are already in existence, but it is essential that researchers developing new mouse strains, or utilizing existing strains in novel applications, characterize them fully with regard to targeting efficiency and specificity.

Through an increasingly finessed approach to genetic manipulation, we are gaining an ever more detailed picture of the cellular and subcellular processes that regulate hepatic pathology. Harnessing Tg technology in the liver will help identify rational antifibrotic and proregenerative targets, facilitating efficient translation of scientific discoveries into potent therapies for patients.

## References

- Nagy A. Cre recombinase: the universal reagent for genome tailoring. *Genesis* 2000;26:99-109.
- Branda CS, Dymecki SM. Talking about a revolution: the impact of site-specific recombinases on genetic analyses in mice. *Dev Cell* 2004;6:7-28.
- Tarlow BD, Finegold MJ, Grompe M. Clonal tracing of Sox9+ liver progenitors in mouse oval cell injury. *HEPATOLOGY* 2014;60:278-289.
- Malato Y, Naqvi S, Schürmann N, Ng R, Wang B, Zape J, et al. Fate tracing of mature hepatocytes in mouse liver homeostasis and regeneration. *J Clin Invest* 2011;121:4850-4860.
- Fan B, Malato Y, Calvisi DF, Naqvi S, Razumilava N, Ribback S, et al. Cholangiocarcinomas can originate from hepatocytes in mice. *J Clin Invest* 2012;122:2911-2915.
- Wu Y, Wang C, Sun H, LeRoith D, Yakar S. High-efficient FLPo deleter mice in C57BL/6J background. *PLoS One* 2009;4:e8054.
- Schönhuber N, Seidler B, Schuck K, Veltkamp C, Schachtler C, Zukowska M, et al. A next-generation dual-recombinase system for time- and host-specific targeting of pancreatic cancer. *Nat Med* 2014;20:1340-1347.
- Soriano P. Generalized lacZ expression with the ROSA26 Cre reporter strain. *Nat Genet* 1999;21:70-71.
- Abe T, Fujimori T. Reporter mouse lines for fluorescence imaging. *Dev Growth Differ* 2013;55:390-405.
- Heffner CS, Pratt CH, Babiuk RP, Sharma Y, Rockwood SF, Donahue LR, et al. Supporting conditional mouse mutagenesis with a comprehensive cre characterization resource. *Nat Commun* 2012;3:1218.
- Ellis EL, Mann DA. Clinical evidence for the regression of liver fibrosis. *J Hepatol* 2012;56:1171-1180.
- Mederacke I, Hsu CC, Troeger JS, Huebener P, Mu X, Dapito DH, et al. Fate tracing reveals hepatic stellate cells as dominant contributors to liver fibrosis independent of its aetiology. *Nat Commun* 2013;4:2823.
- Henderson NC, Arnold TD, Katamura Y, Giacomini MM, Rodriguez JD, McCarty JH, et al. Targeting of *zv* integrin identifies a core molecular pathway that regulates fibrosis in several organs. *Nat Med* 2013;19:1617-1624.
- Yang L, Jung Y, Omenetti A, Witek RP, Choi S, Vandongen HM, et al. Fate-mapping evidence that hepatic stellate cells are epithelial progenitors in adult mouse livers. *Stem Cells* 2008;26:2104-2113.
- Scholten D, Österreicher CH, Scholten A, Iwaisako K, Gu G, Brenner DA, et al. Genetic labeling does not detect epithelial-to-mesenchymal transition of cholangiocytes in liver fibrosis in mice. *Gastroenterology* 2010;139:987-998.
- Kisseleva T, Cong M, Paik Y, Scholten D, Jiang C, Benner C, et al. Myofibroblasts revert to an inactive phenotype during regression of liver fibrosis. *Proc Natl Acad Sci U S A* 2012;109:9448-9453.
- Michelotti GA, Xie G, Swiderska M, Choi SS, Karaca G, Krüger L, et al. Smoothed is a master regulator of adult liver repair. *J Clin Invest* 2013;123:2380-2394.
- Hinz B, Phan SH, Thannickal VJ, Prunotto M, Desmoulière A, Varga J, et al. Recent developments in myofibroblast biology: paradigms for connective tissue remodeling. *Am J Pathol* 2012;180:1340-1355.
- Swiderska-Syn M, Syn WK, Xie G, Kruger L, Machado MV, Karaca G, et al. Myofibroblastic cells function as progenitors to regenerate murine livers after partial hepatectomy. *Gut* 2014;63:1333-1344.
- Schaub JR, Malato Y, Gormond C, Willenbring H. Evidence against a stem cell origin of new hepatocytes in a common mouse model of chronic liver injury. *Cell Rep* 2014;8:933-939.
- Yanger K, Knigin D, Zong Y, Mages L, Gu G, Akiyama H, et al. Adult hepatocytes are generated by self-duplication rather than stem cell differentiation. *Cell Stem Cell* 2014;15:340-349.
- de Leeuw AM, Mccarthy SP, Geerts A, Knook DL. Purified rat liver fat-storing cells in culture divide and contain collagen. *HEPATOLOGY* 1984;4:392-403.
- Friedman SL, Roll FJ, Boyles J, Bissell DM. Hepatic lipocytes: the principal collagen-producing cells of normal rat liver. *Proc Natl Acad Sci U S A* 1985;82:8681-8685.
- Iwaisako K, Jiang C, Zhang M, Cong M, Moore-Morris TJ, Park TJ, et al. Origin of myofibroblasts in the fibrotic liver in mice. *Proc Natl Acad Sci U S A* 2014;111:E3297-E305.
- Troeger JS, Mederacke I, Gwak GY, Dapito DH, Mu X, Hsu CC, et al. Deactivation of hepatic stellate cells during liver fibrosis resolution in mice. *Gastroenterology* 2012;143:1073-1083.e22.
- Elvevold K, Smedsrød B, Martinez I. The liver sinusoidal endothelial cell: a cell type of controversial and confusing identity. *Am J Physiol Gastrointest Liver Physiol* 2008;294:G391-G400.
- Géraud C, Evdokimov K, Straub BK, Peitsch WK, Demory A, Dörflinger Y, et al. Unique cell type-specific junctional complexes in vascular endothelium of human and rat liver sinusoids. *PLoS One* 2012;7:e34206.
- Wang Y, Nakayama M, Pitulescu ME, Schmidt TS, Bochenek ML, Sakakibara A, et al. Ephrin-B2 controls VEGF-induced angiogenesis and lymphangiogenesis. *Nature* 2010;465:483-486.
- Ding B-S, Cao Z, Lis R, Nolan DJ, Guo P, Simons M, et al. Divergent angiocrine signals from vascular niche balance liver regeneration and fibrosis. *Nature* 2014;505:97-102.
- Duffield JS, Forbes SJ, Constandinou CM, Clay S, Partolina M, Vuthoori S, et al. Selective depletion of macrophages reveals distinct, opposing roles during liver injury and repair. *J Clin Invest* 2005;115:56-65.
- Abram CL, Roberge GL, Hu Y, Lowell CA. Comparative analysis of the efficiency and specificity of myeloid-Cre deleting strains using ROSA-EYFP reporter mice. *J Immunol Methods* 2014;408:89-100.
- Keshav S, Chung P, Milon G, Gordon S. Lysozyme is an inducible marker of macrophage activation in murine tissues as demonstrated by *in situ* hybridization. *J Exp Med* 1991;174:1049-1058.
- Clausen BE, Burkhardt C, Reith W, Renkawitz R, Förster I. Conditional gene targeting in macrophages and granulocytes using LysMcre mice. *Transgenic Res* 1999;8:265-277.
- Vannella KM, Barron L, Borthwick LA, Kindrachuk KN, Narasimhan PB, Hart KM, et al. Incomplete deletion of IL-4R $\alpha$  by LysM(Cre) reveals distinct subsets of M2 macrophages controlling inflammation and fibrosis in chronic schistosomiasis. *PLoS Pathog* 2014;10:e1004372.



35. He JQ, Katschke KJ, Gribling P, Suto E, Lee WP, Diehl L, et al. CR1g mediates early Kupffer cell responses to adenovirus. *J Leukoc Biol* 2013;93:301-306.
36. Morán-Salvador E, López-Parra M, García-Alonso V, Titos E, Martínez-Clemente M, González-Pérez A, et al. Role for PPAR $\gamma$  in obesity-induced hepatic steatosis as determined by hepatocyte- and macrophage-specific conditional knockouts. *FASEB J* 2011;25:2538-2550.
37. Sun Z, Miller RA, Patel RT, Chen J, Dhir R, Wang H, et al. Hepatic Hdac3 promotes gluconeogenesis by repressing lipid synthesis and sequestration. *Nat Med* 2012;18:934-942.
38. Morán-Salvador E, Titos E, Rius B, González-Pérez A, García-Alonso V, López-Vicario C, et al. Cell-specific PPAR $\gamma$  deficiency establishes anti-inflammatory and anti-fibrogenic properties for this nuclear receptor in non-parenchymal liver cells. *J Hepatol* 2013;59:1045-1053.
39. Sasmono RT, Oceandy D, Pollard JW, Tong W, Pavli P, Wainwright BJ, et al. A macrophage colony-stimulating factor receptor-green fluorescent protein transgene is expressed throughout the mononuclear phagocyte system of the mouse. *Blood* 2003;101:1155-1163.
40. Sasmono RT, Ehrnsperger A, Cronau SL, Ravasi T, Kandane R, Hickey MJ, et al. Mouse neutrophilic granulocytes express mRNA encoding the macrophage colony-stimulating factor receptor (CSF-1R) as well as many other macrophage-specific transcripts and can transdifferentiate into macrophages in vitro in response to CSF-1. *J Leukoc Biol* 2007; 82:111-123.
41. MacDonald KPA, Rowe V, Bofinger HM, Thomas R, Sasmono T, Hume DA, et al. The colony-stimulating factor 1 receptor is expressed on dendritic cells during differentiation and regulates their expansion. *J Immunol* 2005;175:1399-1405.
42. Qian BZ, Li J, Zhang H, Kitamura T, Zhang J, Campion LR, et al. CCL2 recruits inflammatory monocytes to facilitate breast-tumour metastasis. *Nature* 2011;475:222-225.
43. **Schulz C, Gomez Perdiguero E**, Chorro L, Szabo-Rogers H, Cagnard N, Kierdorf K, et al. A lineage of myeloid cells independent of Myb and hematopoietic stem cells. *Science* 2012;336:86-90.

Author names in bold designate shared co-first authorship.