

RESEARCH

Open Access



Hypoxic preconditioning potentiates the trophic effects of mesenchymal stem cells on co-cultured human primary hepatocytes

Harry H. Qin¹, Céline Filippi^{1,2}, Song Sun¹, Sharon Lehec¹, Anil Dhawan^{1,3*} and Robin D. Hughes¹

Abstract

Introduction: Mesenchymal stem/stromal cells (MSCs) improve the metabolic function of co-cultured hepatocytes. The present study aimed to further enhance the trophic effects of co-culture with hepatocytes using hypoxic preconditioning (HPC) of the MSCs and also to investigate the underlying molecular mechanisms involved.

Methods: Human adipose tissue-derived MSCs were subjected to hypoxia (2 % O₂; HPC) or normoxia (20 % O₂) for 24 h and then co-cultured with isolated human hepatocytes. Assays of metabolic function and apoptosis were performed to investigate the hepatotrophic and anti-apoptotic effects of co-culture. Indirect co-cultures and co-culture with MSC-conditioned medium investigated the role of paracrine factors in the hepatotrophic effects of co-culture. Reactive oxygen species (ROS) activity was antagonised with N-acetylcysteine to investigate whether HPC potentiated the effects of MSCs by intracellular ROS-dependent mechanisms. Tumour necrosis factor (TNF)- α , transforming growth factor (TGF)- β 1, and extracellular collagen production was determined and CASP9 and BAX/BCL-2 signalling pathways analysed to investigate the role of soluble factors, extracellular matrix deposition, and apoptosis-associated gene signalling in the effects of co-culture.

Results: HPC potentiated the hepatotrophic and anti-apoptotic effects of co-culture by ROS-dependent mechanisms. There was increased MSC TGF- β 1 production, and enhanced MSC deposition of extracellular collagen, with reduced synthesis of TNF- α , as well as a downregulation of the expression of pro-apoptotic *CASP9*, *BAX*, *BID* and *BLK* genes and upregulated expression of anti-apoptotic *BCL-2* in hepatocytes.

Conclusions: HPC potentiated the trophic and anti-apoptotic effects of MSCs on hepatocytes via mechanisms including intracellular ROS, autocrine TGF- β , extracellular collagen and caspase and BAX/BCL-2 signalling pathways.

Keywords: Mesenchymal stem cell, Hepatocyte, Co-culture, Hypoxic preconditioning, Reactive oxygen species, Collagen, Cytokines, Apoptosis

Introduction

Hepatocyte transplantation has emerged as a promising alternative treatment for patients with end-stage liver disease, particularly those unsuitable for or without access to liver transplantation [1]. However, the limited availability of donor liver and the quality of cells isolated from marginal livers restricts the wider use of this technique. Once isolated and cultured in vitro, primary hepatocytes

lose their proliferative potential and show a rapid phenotypic de-differentiation and metabolic regression in mono-culture [2]. Clinically feasible methods are required to preserve and improve quality and functionality of human hepatocytes during and after isolation.

Mesenchymal stem cells (MSCs) have been shown to have a supportive effect on hepatocytes in long-term co-culture in vitro [3]. MSCs maintain and improve co-cultured hepatocyte morphology and metabolic function by the synergistic effects of soluble factors, extracellular matrix (ECM), and cell-cell communication [4–7]. Our previous study demonstrated that co-culture with MSCs improved

* Correspondence: anil.dhawan@kcl.ac.uk

¹Dhawan Lab, Institute of Liver Studies, King's College London and King's College Hospital NHS Foundation Trust, London SE5 9PJ, UK

³Paediatric Liver, GI and Nutrition Centre, King's College Hospital Denmark Hill, London SE5 9RS, UK

Full list of author information is available at the end of the article

human hepatocyte viability and metabolic function in a heterotypic cell contact-dependent manner [8].

MSCs normally reside in a physiologically hypoxic niche, such as adipose tissue. Hypoxic preconditioning (HPc) has been used to protect MSCs from hypoxia/reoxygenation-induced apoptosis by stabilising the mitochondrial membrane potential, upregulating Bcl-2 and vascular endothelial growth factor (VEGF) signalling, and promoting the phosphorylation of mitogens-activated protein kinase/extracellular signal regulated kinase (MAPK/ERK) and Akt signalling pathways [9]. HPc significantly increases the expression of pro-survival and pro-angiogenic factors, such as hypoxia-inducible factor 1 α , angiopoietin 1, VEGF and its receptor, erythropoietin, Bcl-2, and Bcl-xL, and also significantly decreases caspase-3-initiated cellular apoptosis in MSCs [10]. Beneficial therapeutic effects of transplanting HPc-MSCs have been found in experimental limb, cerebral, renal, and spinal cord ischaemia in animals. HPc can also rejuvenate aged adipose tissue-derived MSCs by upregulating the gene expression of pro-angiogenic factors, including VEGF, placental growth factor and hepatocyte growth factor [11].

The main aim of this study was to investigate whether HPc of MSCs could potentiate their trophic effects on co-cultured human primary hepatocytes. In addition, we aimed to investigate the critical role of reactive oxygen species (ROS) in MSC HPc, and the mechanisms underlying effects of MSC HPc in hepatocyte co-culture, including soluble factors, cell–cell contact, cell–matrix interactions, and hepatocyte pro-apoptotic and anti-apoptotic signalling.

Methods

All reagents were purchased from Sigma-Aldrich (Poole, Dorset, UK) unless otherwise specified.

Adipose tissue MSC hypoxic preconditioning

Human primary adipose tissue-derived MSCs were purchased from Invitrogen Ltd (Paisley, UK), and passages 6–8 (P6–P8) of MSCs were subcultured using a low-serum MSC expansion medium (Invitrogen). MSCs were plated on collagen-coated microplates (Fisher Scientific UK Ltd., Leicester, UK) at an optimised density of 20,000 viable cells per cm². After 8 h culture, MSCs were subjected to HPc using a hypoxia incubator chamber (StemCell Technologies SARL, Sirocco, France) which was first purged of O₂ by gassing with 95 % N₂ plus 5 % CO₂ (20 L/min for 3 min). MSC were incubated at 37 °C for an optimised time of 24 h in the hypoxic atmosphere (2 % O₂). Normoxia-preconditioned (NPc) MSCs under 95 % air plus 5 % CO₂ (20 % O₂) were used as control.

Hepatocyte mono-culture and co-culture

Human primary hepatocytes were isolated from donor liver tissues using a standard collagenase perfusion

technique as previously reported [12]. The use of human liver tissues was approved by the Research Ethics Committee at King's College Hospital, London, UK in accordance with the Human Tissues Act of 2004. All donors or their legal representatives volunteered to give informed consent in writing for research use of donor liver. Batches of hepatocytes with a viability of over 60 % on trypan blue exclusion were used for experiments.

For hepatocyte mono-culture, hepatocytes were plated onto collagen-coated microplates at an optimised density of 50,000 viable cells per cm² in a chemically defined hepatocyte culture medium as previously described [12]. For hepatocyte co-culture, fresh hepatocytes were seeded at the optimised density on top of a MSC monolayer (MSC:hepatocyte = 1:2.5). Indirect co-culture was performed with MSCs plated on Transwell Permeable Supports (Corning Incorporated, Corning, NY, USA) which have culture inserts to separate the two types of cells, so that the contribution of soluble factors to the effects of co-culture could be determined by excluding ECM and cell–cell contact. Fresh hepatocytes were also cultured in co-culture conditioned medium to investigate whether paracrine mechanisms mediate synergistic effects of soluble factors, ECM and MSC–hepatocyte contact in co-culture. Culture medium was refreshed on every alternate day.

Albumin and urea assays

A human albumin enzyme-linked immunosorbent assay (ELISA) quantitation kit (Bethyl Laboratories, Inc., Montgomery, TX, USA) and QuantiChrom™ urea assay kit (BioAssay Systems, Hayward, CA, USA) were used to quantitate free albumin and urea levels, respectively, as measures of hepatocyte function. Albumin secretion and urea synthesis of hepatocytes in mono- and co-culture were normalised to one million seeded viable hepatocytes.

Effect of MSC co-culture on hepatocyte apoptosis and cell death

Caspase-cleaved cytokeratin 18 (CCK18), a marker of hepatocyte apoptosis, and total cytokeratin 18 (CK18), a marker of hepatocyte death, were quantitated using the M30 CytoDeath and M65 EpiDeath ELISA kits (PEVIVA AB, Bromma, Sweden), respectively. Levels of soluble CCK18 and CK18 released from hepatocytes in mono- and co-culture were normalised to one million seeded viable hepatocytes. The ratio of CCK18 to CK18 was also calculated to determine the relative mode of death for hepatocytes in vitro [13]. Staurosporine, a prototypical adenosine triphosphate (ATP)-competitive protein kinase inhibitor activating caspase-3 signalling [14], was used to induce apoptosis to investigate whether MSC co-culture specifically inhibited hepatocyte apoptosis via the caspase signalling pathway. Fresh hepatocyte mono-cultures were treated with 0 (blank control), 0.5, 1, 2.5, 5, and 10 μ M

staurosporine for 24 h to induce apoptosis and then subsequently co-cultured with MSCs for 24 h.

Role of ROS in the effects of MSCs on hepatocytes

Hypoxia increases ROS activity in MSCs. Intracellular ROS activity was measured in MSCs using an 8-channel BD FACS Canto II flow meter (BD Biosciences, San Jose, CA, USA) with dichloro-dihydrofluorescein diacetate acetyl ester (Molecular Probes, Inc., Eugene, OR, USA) staining as previously described [15]. Median fluorescence intensities (MFIs) of HPC- and serum-deprived (positive control) MSCs were normalised to that of NPC-MSCs [16]. N-acetylcysteine (NAC), a potent scavenger of ROS, was used to block ROS to investigate whether increased ROS mediated the HPC-induced effects of co-culture of MSCs with hepatocytes. MSCs were pre-treated with 0, 5, 10, and 20 mM NAC (PLIVA Pharma, Ltd., Hampshire, UK) for 24 h and then the MSCs were co-cultured with hepatocytes for 7 days. Intracellular ROS activity of NAC-pretreated, HPC-MSCs was quantitated prior to co-culture with hepatocytes (Fig. 1a).

Involvement of tumour necrosis factor- α and transforming growth factor- β 1 in the effects of MSCs on hepatocytes in co-culture

The supernatant levels of soluble tumour necrosis factor (TNF)- α and transforming growth factor (TGF)- β 1 were determined during MSC and hepatocyte co-culture, including in the presence of NAC, using Quantikine[®] human TNF- α and TGF- β 1 ELISA immunoassay kits (R&D Systems Europe, Ltd., Abingdon, UK). TNF- α and TGF- β 1 neutralisation experiments with antibodies were performed to investigate the pro-apoptotic effect of TNF- α on mono-cultured hepatocytes and role of release of TGF- β 1 from MSCs in the co-culture trophic effects. For this, HPC-induced potentiation together with 24-h incubation with 0 (blank control), 10, 25, 50 100, and 200 μ g/mL TNF- α antibodies and 1, 2.5, 5, 10, and 20 μ g/mL TGF- β 1 antibodies (R&D Systems Europe Ltd.) was performed.

Role of collagen in MSC and hepatocyte interaction

Collagen could be implicated in the trophic effects of co-culture with MSCs and HPC-induced potentiation. Cellular, free and extracellular collagen content of cell cultures were quantitated using the picro-sirius red colorimetric assay with the Sircol soluble collagen assay kit (Biocolor, Carrickfergus, UK). MSCs were pretreated with 0, 0.1, 0.5, 1, 2.5, 5, 10, and 20 mM N-(methylamino)-isobutyric acid, a competitive inhibitor of the neutral amino acid transport A system in collagen synthesis [17], for 24 h prior to 24-h co-culture.

Expression of pro-apoptosis-associated and anti-apoptosis-associated genes during co-culture of MSC with hepatocytes

Total RNA samples were extracted using the Direct-zol RNA MiniPrep kit (Zymo Research Corporation, Irvine, CA, USA) and reversely transcribed into complementary DNA (cDNA) using the Omniscript Reverse Transcriptase kit (Qiagen, West Sussex, UK). cDNA samples were amplified using the TaqMan PreAmp master mix kit (Applied Biosystems, Life Technologies, Paisley, UK). Quantitative real-time polymerase chain reaction (qRT-PCR) assay was performed using the ABI PRISM 7000 sequence detection system (Applied Biosystems) with primers (Table 1) synthesised by Invitrogen for human gene expression assays of caspases (*CASP*) 3, 8, 9 and 14, Bcl-2-associated X protein 4 (*BAX*), *BCL-2*, BH3 interacting-domain death agonist (*BID*) and B lymphoid tyrosine kinase (*BLK*). Cycle threshold (Ct) was produced with an automatic threshold using the RQ Study Application (Applied Biosystems). The qPCR results were analysed using the semi-quantitative $2^{-\Delta\Delta C_t}$ method [18] and expressed as mRNA expression level relative to that of mono-cultured hepatocytes (control).

Statistical analysis

All experiments were performed in duplicate and independently repeated in triplicate. GraphPad Prism 6 programme (GraphPad Software, Inc., La Jolla, CA, USA) was used for statistical analysis. All continuous data were expressed as mean \pm standard deviation (SD), and the means were compared using the one-way repeated measures analysis of variance, the Fisher's least significant difference test, or two independent samples student *t*-test unless specified otherwise. A two-tailed *p*-value <0.05 was considered statistically significant.

Results

HPC of MSCs potentiates the effects of co-culture with hepatocytes via intracellular ROS-dependent mechanisms

HPC did not result in cellular detachment, necrosis, or morphological distortion of MSCs (data not shown). HPC and serum deprivation significantly increased MSC intracellular ROS activity as compared to NPC (both *p* < 0.01; Fig. 1b). Hepatocytes in co-culture with HPC- and NPC-MSCs exhibited a similar morphology, with hepatocytes aggregated into large, oval-shaped colonies and attached on top of the MSCs in a three-dimensional manner, resulting in higher plating efficiency than mono-culture. HPC of MSCs potentiated their trophic and anti-apoptotic effects on hepatocytes with respect to albumin secretion on days 3–7 (*p* < 0.01; Fig. 1c), urea synthesis on days 3–7 (*p* < 0.01; Fig. 1d), caspase-mediated apoptosis on days 1–5 (soluble CCK18 release, *p* < 0.01; Fig. 1e), as well as total cell death on days 1–5

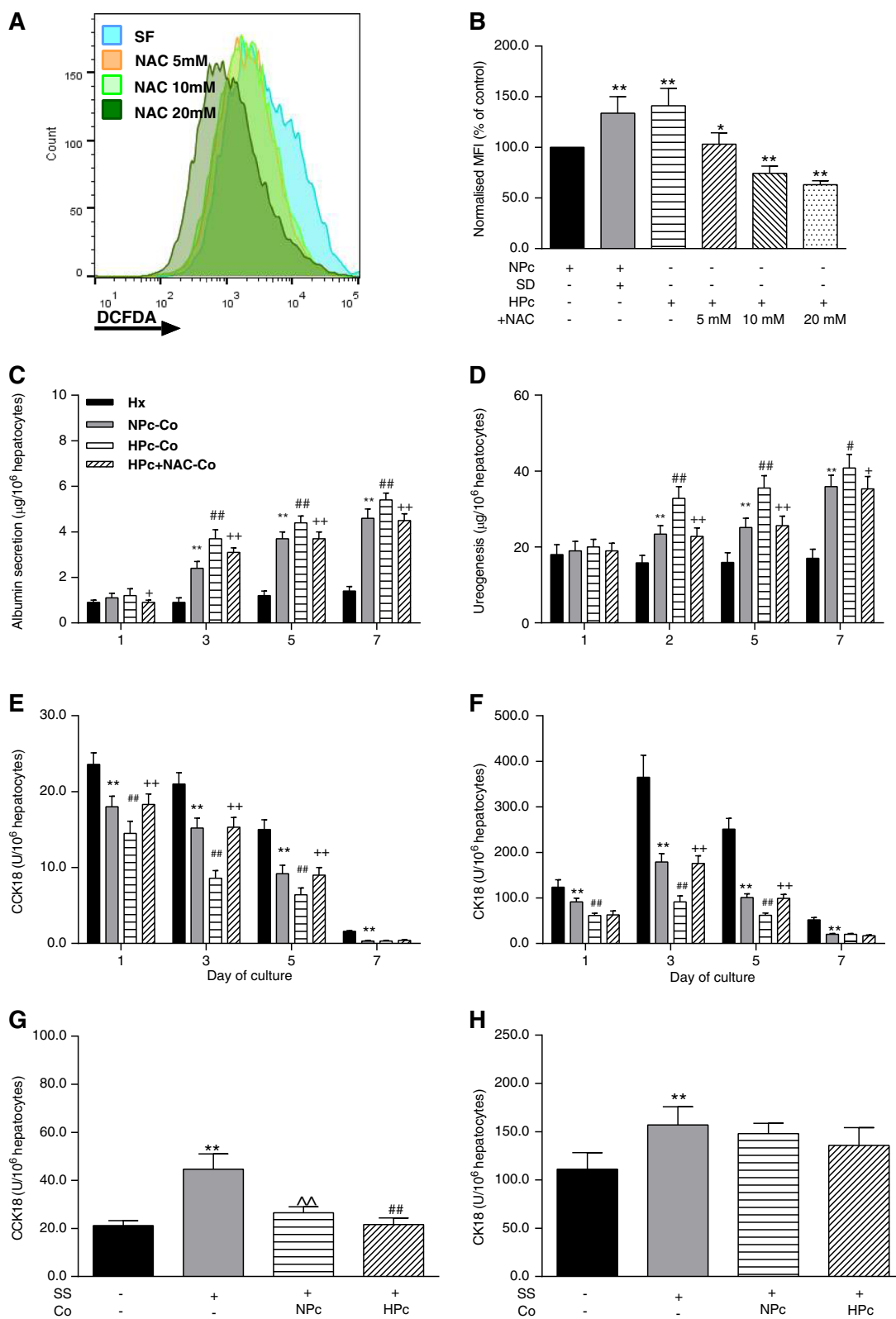


Fig. 1 (See legend on next page.)

(See figure on previous page.)

Fig. 1 HPC potentiates the hepatotrophic and anti-apoptotic effects of co-culture with MSCs. **a** Representative histogram of DCFDA to measure intracellular ROS fluorescence intensity of serum-deprived, HPC-, and HPC + NAC-pretreated MSCs. **b** Bar chart of normalised MFI of intra-MSC ROS activity. Values are mean \pm standard deviation ($n = 6$). * $p < 0.05$ and ** $p < 0.01$, versus NPC-MSCs. **c** Albumin secretion and **d** urea synthesis of mono- and co-cultured hepatocytes with NPC- or HPC-MSCs, with or without NAC 10 mM. **e** Soluble CCK18 and **f** CK18 releases of mono- and co-cultured hepatocytes. **g** Staurosporine cytotoxicity assay of mono-cultured hepatocytes and resistance of co-cultured hepatocytes to 1 μ M staurosporine-induced cellular apoptosis and **h** total death. Values are mean \pm standard deviation ($n = 6$). ** $p < 0.01$, versus hepatocyte mono-culture; ## $p < 0.01$, versus co-culture with NPC-MSCs; + $p < 0.05$ and ++ $p < 0.01$, versus co-culture with HPC-MSCs; ^^ $p < 0.01$, versus hepatocyte mono-culture treated with 1 μ M staurosporine. CCK18 Caspase-cleaved cytokeratin 18, CK18 Cytokeratin 18, Co Co-culture; DCFDA Dichloro-dihydrofluorescein diacetate acetyl ester, HPC Hypoxia-preconditioned, Hx Hepatocyte mono-culture; MFI Median fluorescence intensity, NAC N-acetylcysteine, NPC Normoxia-preconditioned, SD Serum-deprived, SF Serum-free, SS Staurosporine

(soluble CK18 release, $p < 0.01$; Fig. 1f) without changing the death mode of hepatocytes (CCK18/CK18 ratio; data not shown). Indirect co-culture of hepatocytes with HPC- or NPC-MSCs in transwell plates and also culture with co-culture conditioned medium in order to test the involvement of soluble factors due to paracrine mechanisms showed minimal hepatotrophic and anti-apoptotic effects (data not shown).

Exposure of mono-cultured hepatocytes to 1 μ M upwards of staurosporine significantly increased caspase-mediated apoptosis and total cellular death of hepatocytes and switched hepatocyte death mode from necrosis to apoptosis (all $p < 0.01$; Fig. 1g and h), as expected from this well-described apoptosis inducer. Co-culture with HPC-MSCs inhibited staurosporine-induced hepatocyte apoptosis to a greater extent than NPC-MSCs ($p < 0.01$; Fig. 1g) but had no further effect on staurosporine-induced total cellular death (Fig. 1h). Co-culture with HPC- and NPC-MSCs reversed the staurosporine-induced necrosis-to-apoptosis switch in hepatocyte death mode to a similar extent.

Pretreatment of MSCs with 5 mM NAC did not completely eliminate the HPC-induced increase in ROS activity in MSCs; however, the addition of 10 or 20 mM NAC prevented the HPC-induced ROS activity increase (both $p < 0.01$; Fig. 1a and b), with levels lower than

those observed in NPC. Treatment of MSCs with 10 mM NAC significantly diminished the effects of HPC-MSC co-culture on hepatocyte albumin secretion on days 1–7 ($p < 0.01$; Fig. 1c) and urea synthesis days 3–7 ($p < 0.01$; Fig. 1d). It also reversed the effects on caspase-mediated apoptosis on days 1–5 ($p < 0.01$; Fig. 1e, upper panel) as well as total cellular death on days 3–5 ($p < 0.01$; Fig. 1f). The death mode of co-cultured hepatocytes switched from necrosis to apoptosis only on day 1 (data not shown).

HPC inhibits TNF- α secretion of co-cultured hepatocytes but potentiates TGF- β 1 activities of MSCs and co-cultured cells

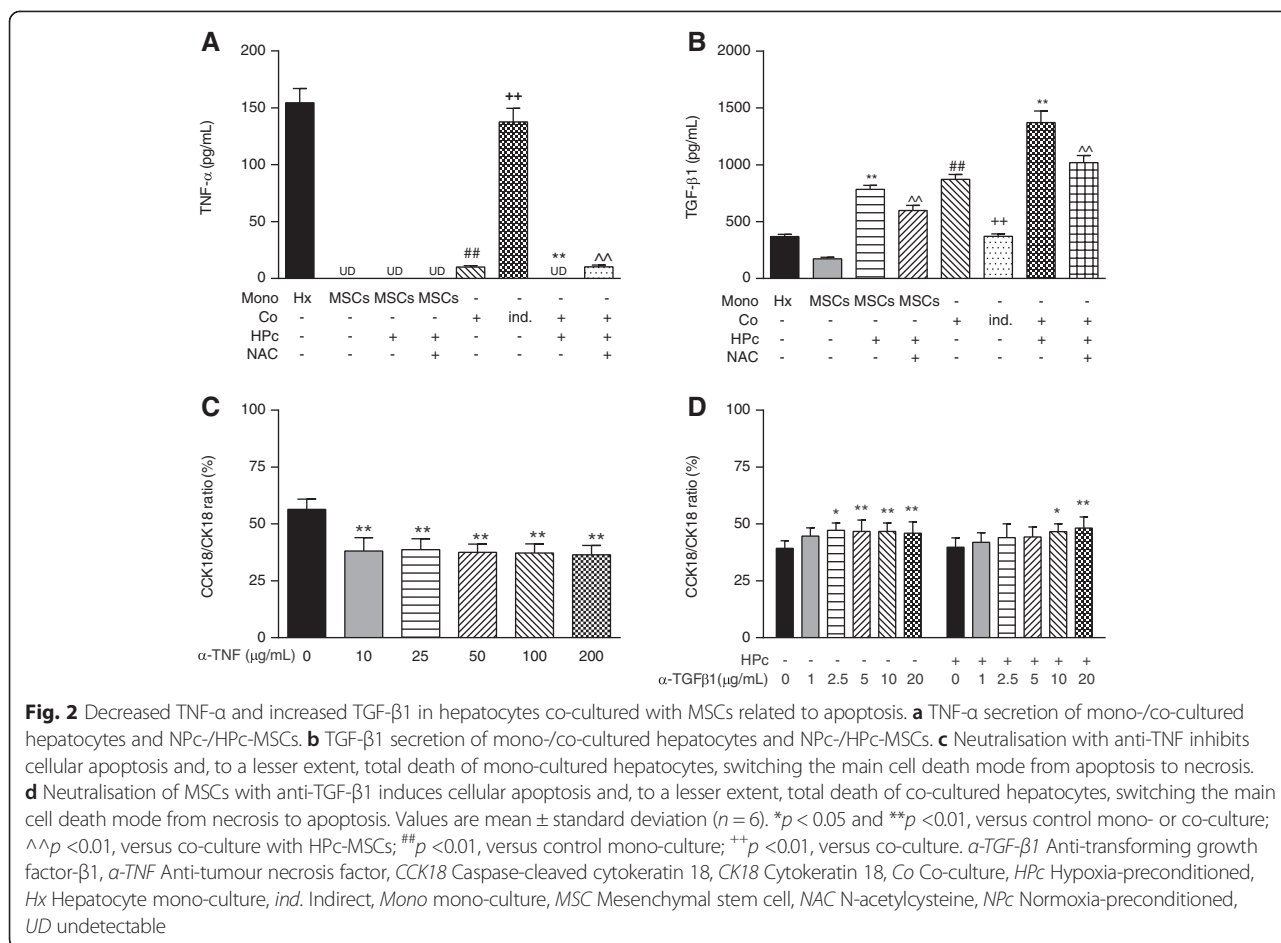
Mono-cultured hepatocytes secreted a high level of TNF- α , while NPC-, HPC-, and NAC-pretreated HPC-MSCs secreted no detectable TNF- α (Fig. 2a). Co-culture with NPC-MSCs reduced hepatocyte secretion of TNF- α ($p < 0.01$), while indirect co-culture had no effect on TNF- α production ($p < 0.01$). Co-culture with HPC-MSCs decreased TNF- α secretion to a greater extent than with NPC-MSCs ($p < 0.01$), while ROS antagonisation with NAC to a smaller extent prevented the effects seen in HPC-MSC co-cultures ($p < 0.01$; Fig. 2a). TNF- α neutralisation with antibody significantly inhibited caspase-mediated apoptosis of mono-cultured hepatocytes from the lowest dose used (10 μ g/mL; $p < 0.01$; Additional file 1: Figure S2A). TNF- α neutralisation at 25 μ g/mL also significantly suppressed total death of hepatocytes ($p < 0.01$; Additional file 1: Figure S2C). This resulted in a switch in the main death mode of mono-cultured hepatocytes from apoptosis to necrosis ($p < 0.01$; Fig. 2c).

Mono-cultured hepatocytes and MSCs secreted high levels of TGF- β 1 (Fig. 2b). HPC significantly increased MSC secretion of TGF- β 1 ($p < 0.01$), which was reversed by ROS antagonisation with NAC ($p < 0.01$, Fig. 2b). Co-culture significantly increased TGF- β 1 secretion as compared to hepatocyte or MSC mono-culture (both $p < 0.01$), while indirect co-culture abolished these effects ($p < 0.01$ versus co-culture). Co-culture with HPC-MSCs further increased TGF- β 1 secretion as compared to NPC-MSC co-culture ($p < 0.01$), while this was partly reversed

Table 1 qPCR primer identification

Gene symbol	Assay ID	Dye label
<i>B2M</i> (reference gene)	Hs00984230_m1	VIC
<i>CASP3</i>	Hs00234385_m1	FAM
<i>CASP8</i>	Hs01018151_m1	FAM
<i>CASP9</i>	Hs00154261_m1	FAM
<i>CASP14</i>	Hs00201637_m1	FAM
<i>BAX</i>	Hs00180269_m1	FAM
<i>BCL-2</i>	Hs00236808_s1	FAM
<i>BID</i>	Hs00609632_m1	FAM
<i>BLK</i>	Hs00176441_m1	FAM

B2M Beta-2 microglobulin, *BAX* BCL-2-associated X protein, *BCL-2* B-cell lymphoma 2, *BID* BH3 interacting-domain death agonist, *BLK* B lymphoid tyrosine kinase, *CASP* Caspases, *qPCR* Quantitative polymerase chain reaction



by NAC treatment ($p < 0.01$; Fig. 2b). Neutralising MSC autocrine activity of TGF- β 1, starting from the 5 μ g/mL dose, significantly diminished anti-apoptotic ($p < 0.01$; Additional file 1: Figure S2C) and pro-survival effects ($p < 0.01$; Additional file 1: Figure S2D) of co-culture with NPC- and HPC-MSCs. TGF- β 1 neutralisation by antibody accompanied a necrosis-to-apoptosis switch in death mode of hepatocytes co-cultured with NPC-MSCs starting from 2.5 μ g/mL and with HPC-MSCs from 10 μ g/mL ($p < 0.01$; Fig. 2d).

Effect of HPC-induced MSC co-culture with hepatocytes is related to deposition of extracellular collagen

MSCs secreted large amounts of both cellular and extracellular collagen (Fig. 3a, b and e). HPC increased MSC deposition of cellular and extracellular collagen by intracellular ROS-dependent mechanisms (both $p < 0.01$). Co-culture significantly increased overall cellular and extracellular collagen production as compared to hepatocyte or MSC mono-culture (both $p < 0.01$; Fig. 3a, b and f). Co-culture with HPC-MSCs further increased cellular and extracellular collagen production as compared to that with NPC-MSCs (both $p < 0.01$), and this was significantly decreased by

NAC-induced ROS antagonisation (both $p < 0.01$). Indirect co-culture resulted in an increased extracellular collagen deposition from hepatocytes ($p < 0.01$; Fig. 3b), though this was lower than in either NPC or HPC co-cultures with MSCs.

N-(methylamino)-isobutyric acid pretreatment to inhibit collagen production at the predefined concentrations used had no cytotoxic effects on MSCs as evidenced by MTT measurement and sulforhodamine B attachment assays (data not shown). Pretreatment starting from 5 mM significantly inhibited extracellular collagen deposition of NPC-MSCs ($p < 0.01$; Additional file 2: Figure S3A) and HPC-MSCs ($p < 0.01$; Additional file 2: Figure S3B). Pretreatment of MSCs with 5 mM N-(methylamino)-isobutyric acid significantly inhibited extracellular collagen deposition of co-culture with NPC- and HPC-MSCs (both $p < 0.01$; Fig. 3c). Pretreatment also significantly diminished the anti-apoptotic effect of co-culture and HPC-induced potentiation (both $p < 0.01$; Additional file 2: Figure S3C) but had no significant effects on total cellular death of hepatocytes co-cultured with NPC- and HPC-MSCs (Additional file 2: Figure S3D). Pretreatment resulted in a necrosis-to-apoptosis switch of main

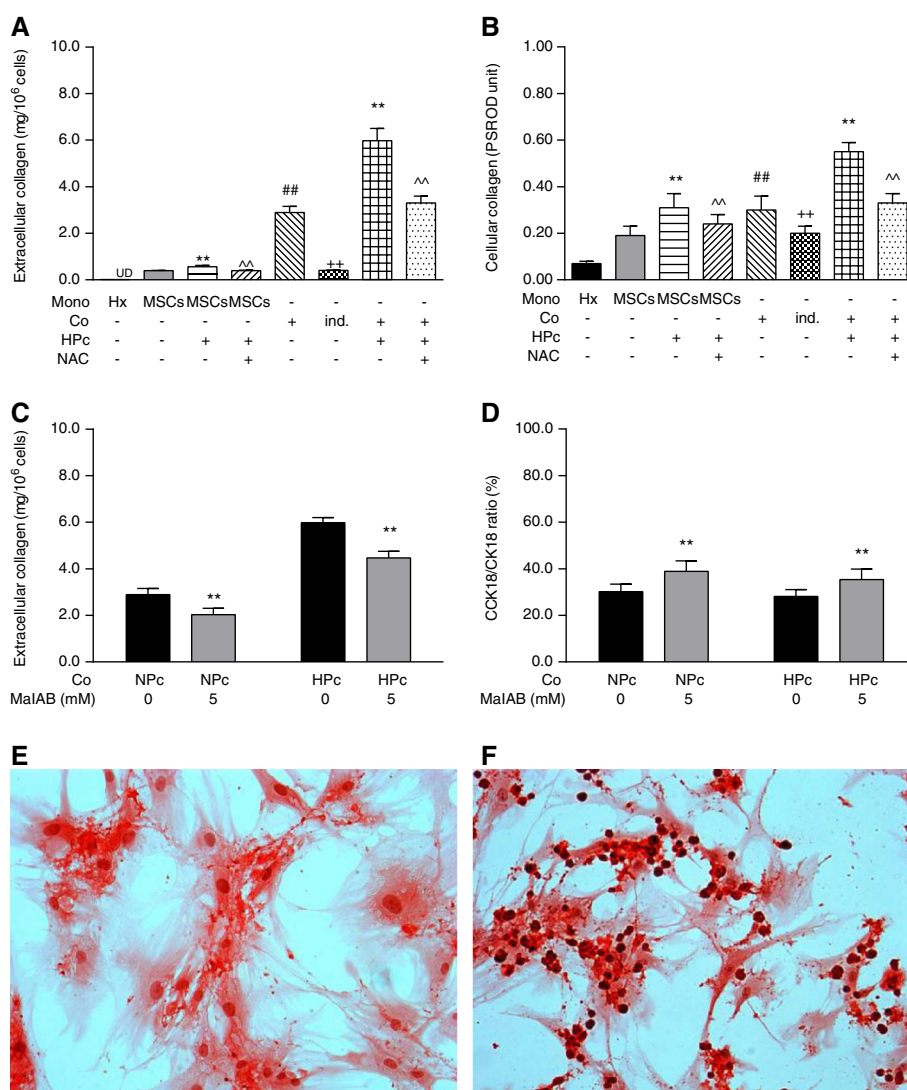


Fig. 3 Dependence of co-culture hepatotropic and HPC-induced potentiative effects on ROS-dependent MSC deposition of extracellular collagen. **a** Extracellular and **b** cellular collagen contents of mono-/co-cultured hepatocytes and NPc-/HPc-MSCs with or without NAC addition. **c** Inhibitory effect of MalBA on extracellular collagen deposit of NPc- and HPc-MSCs. **d** Effects of 5 mM MalBA pretreatment on main cellular death mode of hepatocytes co-cultured with NPc- versus HPc-MSCs. **e** and **f** Picro-sirius red staining (200x) for cellular and extracellular collagen of MSCs in mono-culture (left panel) and co-culture (right panel); nuclei are counterstained with hematoxylin. Values are mean ± standard deviation (n = 6). *p < 0.05 and **p < 0.01, versus control mono- or co-culture; ^^p < 0.01, versus co-culture with HPc-MSCs; ##p < 0.01, versus control mono-culture; ++p < 0.01, versus co-culture. CCK18 Caspase-cleaved cytokeratin 18, CK18 Cytokeratin 18, Co Co-culture, HPc Hypoxia-preconditioned, Hx Hepatocyte mono-culture, ind. Indirect, MalBA N-(methylamino)-isobutyric acid, Mono mono-culture, MSC Mesenchymal stem cell, NAC N-acetylcysteine, NPc Normoxia-preconditioned, PSR OD Picro-sirius red OD reading, UD undetectable

death mode in hepatocytes co-cultured with NPc- and HPc-MSCs (both $p < 0.01$; Fig. 3d).

HPc-MSCs downregulate expression of pro-apoptotic mRNAs by intracellular ROS-dependent mechanisms

The mRNA expression of the anti-apoptotic *BCL-2* (Fig. 4a) was significantly upregulated in co-culture ($p < 0.01$) but not in indirect co-culture. The effect on *BCL-2* mRNA expression was potentiated when MSCs had been preconditioned with hypoxia ($p < 0.01$) and was diminished by

addition of NAC ($p < 0.01$). At the same time, mRNA expression of pro-apoptotic *BAX* (Fig. 4b), *BID* (Fig. 4d), *BLK* (Fig. 4e) and *CASP9* genes (Fig. 4f) were all significantly downregulated in co-culture ($p < 0.01$). Indirect co-culture resulted in downregulation of *BID* and *BLK* mRNA expression (both $p < 0.01$), without any significant change in the expression of *BAX* or *CASP9*. HPc-MSC co-culture strongly downregulated the expressions of all pro-apoptotic genes (all $p < 0.01$), and upregulated the expression of *BCL2*, an effect that was significantly reduced by ROS

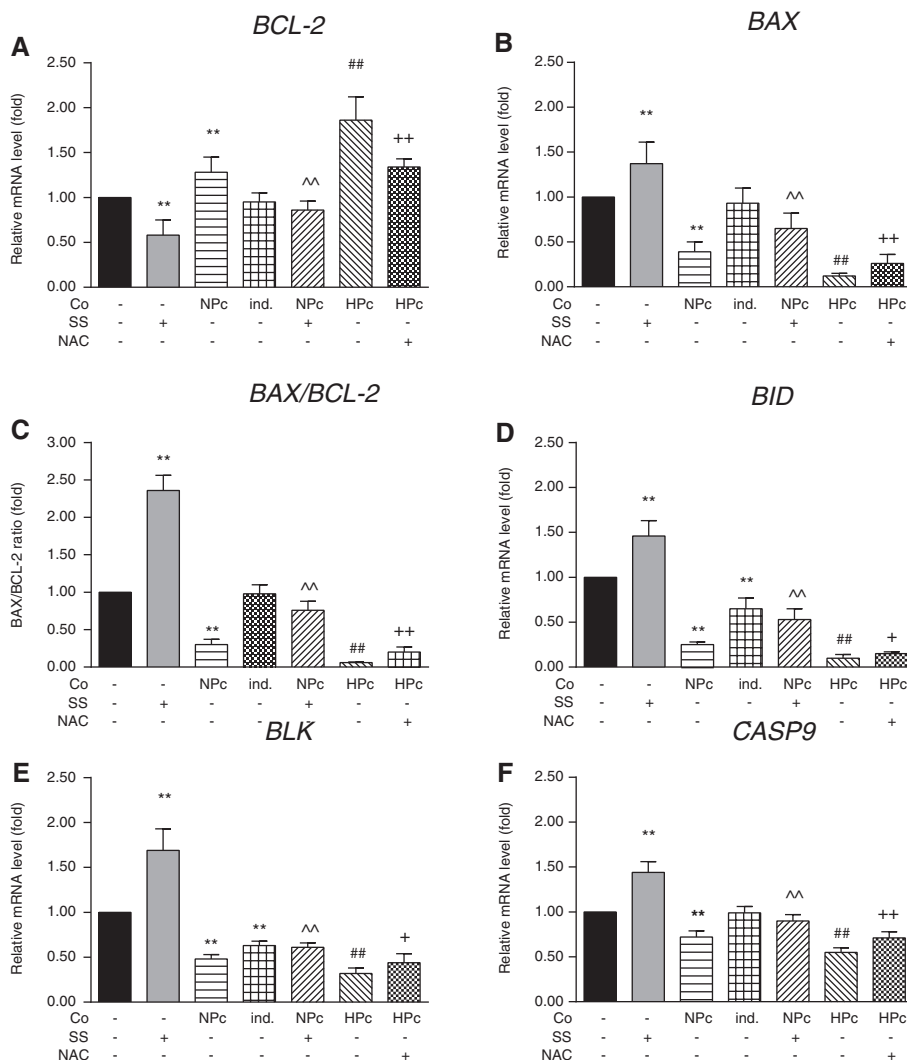


Fig. 4 Relative mRNA expression levels of pro- and anti-apoptosis-associated genes in mono- and co-cultured hepatocytes. **a** *BCL-2*, **b** *BAX*, **c** *BAX/BCL-2* ratio, **d** *BID*, **e** *BLK* and **f** *CASP9*. Values are mean \pm standard deviation ($n = 6$). ** $p < 0.01$, versus hepatocyte mono-culture; ^{SS} $p < 0.01$, versus co-culture; [^] $p < 0.01$, versus SS-treated, mono-cultured hepatocytes; ^{##} $p < 0.01$, versus co-culture with NPC-MSCs; ⁺ $p < 0.05$ and ⁺⁺ $p < 0.01$, versus co-culture with HPC-MSCs. *BAX* Bcl-2-associated X protein, *BCL-2* B-cell lymphoma 2, *BID* BH3 interacting-domain death agonist, *BLK* B lymphoid tyrosine kinase, *CASP* Caspase, *Co* Co-culture, *HPC* Hypoxia-preconditioned, *ind.* Indirect, *NAC* N-acetylcysteine, *NPc* Normoxia-preconditioned, *SS* Staurosporine

antagonisation with NAC. The *BAX/BCL-2* ratio, used to assess cell drive towards apoptosis, was significantly decreased in co-culture ($p < 0.01$, Fig. 4c), but unchanged in indirect co-culture. This decrease was larger in co-culture with HPC-MSCs ($p < 0.01$) and diminished by ROS antagonisation ($p < 0.01$). Pretreatment with staurosporine, the inducer of apoptosis, upregulated mRNA expression of all apoptosis-related genes—*CASP9*, *BAX*, *BID* and *BLK* (all $p < 0.01$)—and downregulated that of *BCL-2* ($p < 0.01$) with a significant increase in *BAX/BCL-2* ratio ($p < 0.01$) in mono-cultured hepatocytes. However, co-culture prevented the staurosporine-induced upregulation of apoptosis-related gene mRNA expression (all $p < 0.01$) and downregulation of

BCL-2 mRNA expression ($p < 0.01$) resulting in a significant decrease in *BAX/BCL-2* ratio ($p < 0.01$). Expression of *CASP3*, *CASP8*, and *CASP14* mRNA was undetectable in mono- or co-cultured hepatocytes (data not shown).

Discussion

This study has shown that hypoxia of MSCs significantly potentiates their effects on hepatocyte survival and metabolic function as reported previously in the presence of normoxia [8]. The mechanisms of these effects of MSCs have been investigated, supporting synergistic mechanisms involving soluble factors, ECM [19], and

cell–cell crosstalk [20]. However, in our indirect co-culture experiments, soluble factors and paracrine mechanisms appeared to contribute minimally to the trophic effects of co-culture in NPC- and HPC-MSCs. Whilst it is possible that isolated primary human hepatocytes become unresponsive to soluble trophic and anti-apoptotic factors released from MSCs, our results suggest that the hepatotrophic effect of co-culture and HPC-induced potentiative effects are primarily mediated by synergistic effects of ECM and direct cell–cell interaction.

Intracellular ROS are known to modulate the biological activities of MSCs, including cellular proliferation, survival/apoptosis, and attachment. Exposure to moderate hypoxia is known to immediately increase intracellular ROS production in human MSCs [21], while pretreatment with NAC, as used in this study, significantly inhibits the greater ROS production and associated cellular activities in hypoxic MSCs [22]. Our results showed that HPC potentiated the hepatotrophic effects of MSCs on co-cultured hepatocytes and that ROS antagonisation with NAC diminished these HPC-induced potentiative effects. Induction of ROS production accompanies phosphorylation of epidermal growth factor receptor, antagonisable by NAC treatment in human MSCs [23]. Aged adipose tissue-derived MSCs have a relatively low angiogenic capacity associated with downregulation of VEGF, placental growth factor, and hepatocyte growth factor expression, but HPC significantly upregulated expression of these pro-angiogenic factors and restored the angiogenesis of aged adipose tissue MSCs [10]. De Barros et al. [24] also reported that HPC could improve angiogenic capacity of aged human adipose tissue-derived MSCs. It remains to be investigated whether ROS also regulate cell adhesion via the ECM in the trophic and anti-apoptotic effects of MSCs on co-cultured hepatocytes. Chemically induced oxidative stress was reported to upregulate expression of bone morphogenetic protein 2 and fibroblast growth factor 2 in human adipose tissue MSCs in an intra-MSc ROS-dependent manner [25]. These two cytokines are well known to actively participate in ECM formation and modification of bone and cartilage [26].

TNF- α has a bidirectional regulatory effect on both hepatocyte proliferation and apoptosis which is modulated by extrinsic and/or intrinsic factors. Co-culture with MSCs protected hepatocytes from apoptosis induced by high-levels of TNF- α [27]. TNF- α neutralisation significantly decreased spontaneous apoptosis and total death of mono-cultured hepatocytes, while co-culture with MSCs particularly after HPC significantly inhibited hepatocyte autocrine activity of TNF- α . The inhibitory effect of co-culture on hepatocyte autocrine TNF- α activity was dependent on MSC–hepatocyte contact and MSC intracellular ROS activity. Trophic and protective effects of MSCs on co-cultured hepatocytes might result from

reduced pro-apoptotic TNF- α together with delivery of trophic factors. However, as already suggested by the partial effect of TNF- α antagonism, the decrease in TNF- α expression is not sufficient to explain the co-culture effects on hepatocyte viability. Indeed, the conditioned medium from MSC/hepatocyte coculture contained a low level of TNF- α and did not mimic direct co-culture, therefore suggesting the role of synergistic factors other than TNF- α .

Co-culture of hepatocytes with MSCs exhibited an additive or synergistic, contact-dependent effect on TGF- β 1 production. Autocrine TGF- β 1 activity of MSCs was required for co-culture trophic effects and HPC-induced potentiation as evidenced by neutralisation of MSC-derived TGF- β 1. A previous study showed that functional enhancement in hepatocytes co-cultured with NIH/3 T3 cells could be eliminated by TGF- β 1 depletion and restored by TGF- β 1 reconstitution [28]. We have shown that hypoxia increases MSC secretion of TGF- β 1 as in other studies [29] in a ROS-dependent manner for both mono- and co-culture. However, TGF- β 1 released by MSCs might not act on hepatocytes through a paracrine mechanism as co-culture conditioned medium containing high-levels of TGF- β 1 had no significant effects on cell function or survival.

MSC deposition of extracellular collagen was enhanced by co-culture with hepatocytes, being greatest with MSCs cultured under hypoxic conditions compared to normoxia and this, at least partially, contributed to trophic and anti-apoptotic effects of MSCs on co-cultured hepatocytes. Attachment of extracellular collagen facilitates the entry of hepatocytes into S-phase [30] and mediates aggregation of hepatocytes and intercellular contact [31]. Extracellular collagen was mainly located around MSCs, and inhibition of collagen type I/V production in MSCs significantly reduced hepatocyte synthesis of albumin and urea [5]. Other groups have shown that HPC significantly upregulated expression of collagen I, II, and X along with some other genes encoding ECM [32], accompanied by enhanced autocrine activity of TGF- β [33]. Enhanced MSC deposition of extracellular collagen might primarily result from MSC–hepatocyte contact and HPC-induced potentiation which was also related to intracellular MSC ROS activity.

Staurosporine is known to activate caspase-3 signalling, independently of caspases-8, -9, and -12 [34]. MSCs, particularly after hypoxia, suppressed staurosporine-induced apoptosis rather than necrosis of co-cultured hepatocytes. Cleavage of CK18 at the position detected by the M30 kit is considered to be initiated by caspase-9 and executed by caspases-3 and -7 [35]. Caspase-9 is the initiator of caspase-mediated apoptosis through the mitochondrial pathway regulated by c-Jun N-terminal kinase/stress-activated protein kinase signalling pathways [36]. Co-culture of hepatocytes with MSCs after HPC significantly

downregulated expression of the caspase-9 gene rather than caspases-3, -8, and -14, suggesting that the anti-apoptotic effects of co-culture and HPC-induced potentiation mainly acted on initiation of apoptosis. This is consistent with the reduced cleavage of hepatocyte CK18 into CCK18 initiated by caspase-9. Bax/Bcl-2 balance regulates hepatocyte apoptosis [37]. BID interacts with Bax and mediates caspase-3 and -8 in apoptotic hepatocytes [38]. Co-culture with MSCs upregulated expression of Bcl-xL and Bcl-2 in islet cells [39], and MSC transplants alleviated ischaemia/reperfusion-induced hepatocyte apoptosis by upregulating Bcl-2 [40]. Co-culture with MSCs significantly decreased *BAX/BCL-2* ratio and *BID* expression in a cell contact-, MSC ROS activity-dependent manner. The biological role of BLK remains to be investigated in hepatocytes. Staurosporine significantly upregulated expression of BLK, while co-culture with MSCs prevented this effect in a cell contact-dependent manner. BLK might be involved in apoptosis and the inflammatory response of hepatocytes as BLK participates in pre-B-cell receptor-mediated activation of nuclear factor kappa B [41], which tunes the balance between apoptosis and proliferation of hepatocytes in response to TNF- α [42]. Indirect co-culture with MSCs downregulated expression of BID and BLK only, which might explain the minimal trophic and anti-apoptotic effects of any paracrine factors.

Extracellular vesicles have been shown to mediate some of the effects of MSCs on cells [43] with anoxia preconditioning being shown to further enhance the effects of vesicles produced from MSCs [44]. In our study, effects due to extracellular vesicles are less likely as the effects found in our experiments are cell-contact dependant as the use of (i) indirect co-culture or (ii) conditioned medium from the MSCs only contributed a small part of the trophic effects of MSCs observed in this study. This is in contrast to other studies which showed that MSC conditioned medium ameliorates cell damage in models of liver injury. Whether this is due to the type of MSCs or the specific culture conditions used in this study remains to be investigated.

Conclusions

In conclusion, MSCs have trophic, anti-apoptotic, pro-survival, and protective effects on co-cultured hepatocytes, which are significantly enhanced by HPC. The HPC-potentiated effects of MSCs on hepatocytes in co-culture were due to heterotypic cellular interaction and intracellular ROS-dependent mechanisms while paracrine factors had a minimal effect due to the absence of ECM and intercellular crosstalk. Potential mechanistic factors consisted of decreased TNF- α expression in hepatocytes, increased MSC TGF- β 1 expression, and enhanced extracellular collagen deposition by MSCs. It is

likely that these factors may synergistically switch the balance away from apoptosis in hepatocytes. Yu et al. [45] recently reported that transplantation of HPC- rather than NPC-MSCs significantly enhanced liver regeneration and the survival of animals after a major hepatectomy. It is hoped that the bench-to-bedside translation of the present work using co-culture of HPC-MSCs and hepatocytes will increase the therapeutic efficacy of hepatocytes for use in hepatocyte transplantation.

Additional files

Additional file 1: Figure S2. Effects of TNF- α and TGF- β 1 antagonism on cell death pathways. (A) Apoptosis and (B) necrosis with TNF- α (C) apoptosis and (D) necrosis in hepatocytes. Values are mean \pm SD ($n = 6$). * $p < 0.05$ and ** $p < 0.01$, versus control mono- or co-culture. (PDF 62 kb)

Additional file 2: Figure S3. Effects of N-(methylamino)-isobutyric acid (MalAB) on extracellular collagen deposition from MSCs and hepatocyte cell death. Titration of MalAB and its effects on collagen deposition in (A) mono-culture of MSCs or (B) co-cultures. (C) Apoptosis and (D) necrosis assessment in NPC or HPC co-cultured cells. Values are mean \pm SD ($n = 6$). * $p < 0.05$ and ** $p < 0.01$, versus control mono- or co-culture. (PDF 39 kb)

Abbreviations

ATP: Adenosine triphosphate; BAX: Bcl-2-associated X protein; Bcl-2: B-cell lymphoma 2; Bcl-xL: B-cell lymphoma-extra large; BID: BH3 interacting-domain death agonist; BLK: B lymphoid tyrosine kinase; CASP: Caspases; CCK-18: Caspase-cleaved cytokeratin 18; cDNA: Complementary DNA; CK18: Cytokeratin 18; Ct: Cycle threshold; ECM: Extracellular matrix; ELISA: Enzyme-linked immunosorbent assay; ERK: Extracellular signal regulated kinase; HPC: Hypoxic preconditioning/hypoxic preconditioned; MAPK: Mitogen-activated protein kinase; MFI: Median fluorescence intensity; MSC: Mesenchymal stem cell; NAC: N-acetylcysteine; NPC: Normoxia-preconditioned; P: Passage; qRT-PCR: Quantitative real-time polymerase chain reaction; ROS: Reactive oxygen species; SD: Standard deviation; TGF: Transforming growth factor; TNF: Tumour necrosis factor; VEGF: Vascular endothelial growth factor.

Competing interests

The authors declare that they have no competing interests.

Authors' contributions

HHQ designed and performed the experiments, collected and analysed the data, and drafted the manuscript. CF helped design the experiments, analysed the data, redesigned all figures and reviewed the manuscript. SS and SL contributed to the acquisition of data and critical revision of the manuscript. AD and RDH conceived the study and reviewed the manuscript at all stages. All authors approved the final manuscript prior to submission for publication.

Acknowledgments

HHQ received KORS, KAF, and KINGS PhD fellowships from King's Graduate School, London, United Kingdom and a Chinese PhD Student Award from UCCL on behalf of The GBCET and the Han Suyin Trust. CF was supported by the NIHR Biomedical Research Centre at Guy's and St Thomas' NHS Foundation Trust and King's College London, United Kingdom. The views expressed are those of the authors and not necessarily those of the NHS, the NIHR or the Department of Health, United Kingdom. The authors thank King's College Hospital Liver Transplantation Team and Liver Histopathology Section for help and assistance in donor liver procurement, and Dr. Qihe Xu (Department of Renal Medicine, King's College London) for kind instruction in the collagen assay protocol. This work was presented, in part, at the 46th Annual Meeting of the European Society for Paediatric Gastroenterology, Hepatology and Nutrition, 8–11 May, 2012, London, United Kingdom and the 12th Congress of the Cell Transplantation Society, 7–11 July, 2013, Milan, Italy.

Author details

¹Dhawan Lab, Institute of Liver Studies, King's College London and King's College Hospital NHS Foundation Trust, London SE5 9PJ, UK. ²NIHR Biomedical Research Centre at Guy's and St Thomas NHS Foundation Trust and King's College London, London SE1 9RT, UK. ³Paediatric Liver, GI and Nutrition Centre, King's College Hospital Denmark Hill, London SE5 9RS, UK.

Received: 10 June 2015 Revised: 14 October 2015

Accepted: 28 October 2015

Published online: 01 December 2015

References

- Dhawan A, Puppi J, Hughes RD, Mistry RR. Human hepatocyte transplantation: current experience and future challenges. *Nat Rev Gastroenterol Hepatol*. 2010;7:288–98.
- Mizumoto H, Ishihara K, Nakazawa K, Iijima H, Funatsu K, Kajiwara T. A new culture technique for hepatocyte organoid formation and long-term maintenance of liver-specific functions. *Tissue Eng Part C Methods*. 2008;14:167–75.
- Corlu A, Ilyin G, Cariou S, Lamy I, Loyer P, Guguen-Guillouzo C. The coculture: a system for studying the regulation of liver differentiation/proliferation activity and its control. *Cell Biol Toxicol*. 1997;13:235–42.
- Iijima H, Matsuo T, Kawakami K. The mixed coculture effect of primary rat hepatocytes and bone marrow cells is caused by soluble factors derived from bone marrow cells. *J Biosci Bioeng*. 2008;105:226–31.
- Gu J, Shi X, Zhang Y, Ding Y. Heterotypic interactions in the preservation of morphology and functionality of porcine hepatocytes by bone marrow mesenchymal stem cells in vitro. *J Cell Physiol*. 2009;219:100–8.
- Gu J, Shi X, Zhang Y, Chu X, Hang H, Ding Y. Establishment of a three-dimensional co-culture system by porcine hepatocytes and bone marrow mesenchymal stem cells in vitro. *Hepatol Res*. 2009;39:398–407.
- Gu J, Shi X, Chu X, Zhang Y, Ding Y. Contribution of bone marrow mesenchymal stem cells to porcine hepatocyte culture in vitro. *Biochem Cell Biol*. 2009;87:595–604.
- Fitzpatrick E, Wu Y, Dhadda P, Hughes RD, Mistry RR, Qin H, et al. Co-culture with mesenchymal stem cells results in improved viability and function of human hepatocytes. *Cell Transplant*. 2015;24:73–83.
- Wang JA, Chen TL, Jiang J, Shi H, Gui C, Luo RH, et al. Hypoxic preconditioning attenuates hypoxia/reoxygenation-induced apoptosis in mesenchymal stem cells. *Acta Pharmacol Sin*. 2008;29:74–82.
- Hu X, Yu SP, Fraser JL, Lu Z, Ogle ME, Wang JA, et al. Transplantation of hypoxia-preconditioned mesenchymal stem cells improves infarcted heart function via enhanced survival of implanted cells and angiogenesis. *J Thorac Cardiovasc Surg*. 2008;135:799–808.
- Efimenko A, Starostina E, Kalinina N, Stolzing A. Angiogenic properties of aged adipose derived mesenchymal stem cells after hypoxic conditioning. *J Transl Med*. 2011;9:10.
- Mistry RR. Isolation of human hepatocytes. *Methods Mol Biol*. 2009;481:17–23.
- Kramer G, Erdal H, Mertens HJ, Nap M, Mauermann J, Steiner G, et al. Differentiation between cell death modes using measurements of different soluble forms of extracellular cytokeratin 18. *Cancer Res*. 2004;64:1751–6.
- Barrachina M, Secades J, Lozano R, Gómez-Santos C, Ambrosio S, Ferrer I. Citicoline increases glutathione redox ratio and reduces caspase-3 activation and cell death in staurosporine-treated SH-SY5Y human neuroblastoma cells. *Brain Res*. 2002;957:84–90.
- Eruslanov E, Kusmartsev S. Identification of ROS using oxidized DCFDA and flow-cytometry. *Methods Mol Biol*. 2010;594:57–72.
- Kohli R, Pan X, Malladi P, Wainwright MS, Whittington PF. Mitochondrial reactive oxygen species signal hepatocyte steatosis by regulating the phosphatidylinositol 3-kinase cell survival pathway. *J Biol Chem*. 2007;282:21327–36.
- Freeman TL, Kharbanda KK, Tuma DJ, Mailliard ME. Inhibition of hepatic stellate cell collagen synthesis by N-(methylamino)isobutyric acid. *Biochem Pharmacol*. 2002;63:697–706.
- Livak KJ, Schmittgen TD. Analysis of relative gene expression data using real-time quantitative PCR and the 2^(-ΔΔCt) method. *Methods*. 2001;25:402–8.
- Sérandour AL, Loyer P, Garnier D, Courselaud B, Théret N, Glaire D, et al. TNF α -mediated extracellular matrix remodeling is required for multiple division cycles in rat hepatocytes. *Hepatology*. 2005;41:478–86.
- Gómez-Aristizábal A, Davies JE. Human umbilical cord perivascular cells improve rat hepatocyte function ex vivo. *Tissue Eng Part A*. 2012;18:2487–96.
- Busletta C, Novo E, Valfrè Di Bonzo L, Povero D, Paternostro C, Ievoli M, et al. Dissection of the biphasic nature of hypoxia-induced motogenic action in bone marrow-derived human mesenchymal stem cells. *Stem Cells*. 2011;29:952–63.
- Fan G, Wen L, Li M, Li C, Luo B, Wang F, et al. Isolation of mouse mesenchymal stem cells with normal ploidy from bone marrows by reducing oxidative stress in combination with extracellular matrix. *BMC Cell Biol*. 2011;12:30.
- Park JE, Seo YK, Yoon HH, Kim CW, Park JK, Jeon S. Electromagnetic fields induce neural differentiation of human bone marrow derived mesenchymal stem cells via ROS mediated EGFR activation. *Neurochem Int*. 2013;62:418–24.
- De Barros S, Dehez S, Arnaud E, Barreau C, Cazavet A, Perez G, et al. Aging-related decrease of human ASC angiogenic potential is reversed by hypoxia preconditioning through ROS production. *Mol Ther*. 2013;21:399–408.
- Moriyama M, Moriyama H, Ueda A, Nishibata Y, Okura H, Ichinose A, et al. Human adipose tissue-derived multilineage progenitor cells exposed to oxidative stress induce neurite outgrowth in PC12 cells through p38 MAPK signaling. *BMC Cell Biol*. 2012;13:21.
- Krawczak DA, Westendorf JJ, Carlson CS, Lewis JL. Influence of bone morphogenetic protein-2 on the extracellular matrix, material properties, and gene expression of long-term articular chondrocyte cultures: loss of chondrocyte stability. *Tissue Eng Part A*. 2009;15:1247–55.
- Shi XL, Gu JY, Zhang Y, Han B, Xiao JQ, Yuan XW, et al. Protective effects of ACLF sera on metabolic functions and proliferation of hepatocytes co-cultured with bone marrow MSCs in vitro. *World J Gastroenterol*. 2011;17:2397–406.
- Chia SM, Lin PC, Yu H. TGF- β 1 regulation in hepatocyte-NIH3T3 co-culture is important for the enhanced hepatocyte function in 3D microenvironment. *Biotechnol Bioeng*. 2005;89:565–73.
- Hung SP, Yang MH, Tseng KF, Lee OK. Hypoxia-induced secretion of TGF- β 1 in mesenchymal stem cell promotes breast cancer cell progression. *Cell Transplant*. 2013;22:1869–82.
- Hansen LK, Albrecht JH. Regulation of the hepatocyte cell cycle by type I collagen matrix: role of cyclin D1. *J Cell Sci*. 1999;112:2971–81.
- Moghe PV, Coger RN, Toner M, Yarmush ML. Cell–cell interactions are essential for maintenance of hepatocyte function in collagen gel but not on matrigel. *Biotechnol Bioeng*. 1997;56:706–11.
- Müller J, Benz K, Ahlers M, Gaissmaier C, Mollenhauer J. Hypoxic conditions during expansion culture prime human mesenchymal stromal precursor cells for chondrogenic differentiation in three-dimensional cultures. *Cell Transplant*. 2011;20:1589–602.
- Rodríguez JP, Montecinos L, Ríos S, Reyes P, Martínez J. Mesenchymal stem cells from osteoporotic patients produce a type I collagen-deficient extracellular matrix favoring adipogenic differentiation. *J Cell Biochem*. 2000;79:557–65.
- Feng G, Kaplowitz N. Mechanism of staurosporine-induced apoptosis in murine hepatocytes. *Am J Physiol Gastrointest Liver Physiol*. 2002;282:G825–34.
- Schutte B, Henfling M, Kölgen W, Bouman M, Mees S, Leers MP, et al. Keratin 8/18 breakdown and reorganization during apoptosis. *Exp Cell Res*. 2004;297:11–26.
- Kang YJ, Chae SW. JNK/SAPK is required in nitric oxide-induced apoptosis in osteoblasts. *Arch Pharm Res*. 2003;26:937–42.
- Hikita H, Takehara T, Kodama T, Shimizu S, Shigekawa M, Hosui A, et al. Delayed-onset caspase-dependent massive hepatocyte apoptosis upon Fas activation in Bak/Bax-deficient mice. *Hepatology*. 2011;54:240–51.
- Li S, Zhao Y, He X, Kim TH, Kuharsky DK, Rabinowich H, et al. Relief of extrinsic pathway inhibition by the Bid-dependent mitochondrial release of Smac in Fas-mediated hepatocyte apoptosis. *J Biol Chem*. 2002;277:26912–20.
- Park KS, Kim YS, Kim JH, Choi B, Kim SH, Tan AH, et al. Trophic molecules derived from human mesenchymal stem cells enhance survival, function, and angiogenesis of isolated islets after transplantation. *Transplantation*. 2010;89:509–17.
- Sun CK, Chang CL, Lin YC, Kao YH, Chang LT, Yen CH, et al. Systemic administration of autologous adipose-derived mesenchymal stem cells alleviates hepatic ischemia-reperfusion injury in rats. *Crit Care Med*. 2012;40:1279–90.
- Krappmann D, Patke A, Heissmeyer V, Scheidereit C. B-cell receptor- and phorbol ester-induced NF- κ B and c-Jun N-terminal kinase activation in B cells requires novel protein kinase C δ s. *Mol Cell Biol*. 2001;21:6640–50.

42. Plümpe J, Malek NP, Bock CT, Rakemann T, Manns MP, Trautwein C. NF-kappaB determines between apoptosis and proliferation in hepatocytes during liver regeneration. *Am J Physiol Gastrointest Liver Physiol.* 2000;278:G173–83.
43. Bian S, Zhang L, Duan L, Wang X, Min Y, Yu H. Extracellular vesicles derived from human bone marrow mesenchymal stem cells promote angiogenesis in a rat myocardial infarction model. *J Mol Med (Berl).* 2014;92:387–97.
44. Li L, Jin S, Zhang Y. Ischemic preconditioning potentiates the protective effect of mesenchymal stem cells on endotoxin-induced acute lung injury in mice through secretion of exosome. *Int J Clin Exp Med.* 2015;8:3825–32.
45. Yu J, Yin S, Zhang W, Gao F, Liu Y, Chen Z, et al. Hypoxia preconditioned bone marrow mesenchymal stem cells promote liver regeneration in a rat massive hepatectomy model. *Stem Cell Res Ther.* 2013;4:83.

**Submit your next manuscript to BioMed Central
and take full advantage of:**

- Convenient online submission
- Thorough peer review
- No space constraints or color figure charges
- Immediate publication on acceptance
- Inclusion in PubMed, CAS, Scopus and Google Scholar
- Research which is freely available for redistribution

Submit your manuscript at
www.biomedcentral.com/submit

