

Mammalian models of chemically induced primary malignancies exploitable for imaging-based preclinical theragnostic research

Yewei Liu^{1,2}, Ting Yin¹, Yuanbo Feng¹, Marlein Miranda Cona¹, Gang Huang², Jianjun Liu², Shaoli Song², Yansheng Jiang¹, Qian Xia^{1,2}, Johannes V. Swinnen³, Guy Bormans⁴, Uwe Himmelreich⁵, Raymond Oyen⁶, Yicheng Ni^{1,6}

¹Theragnostic Laboratory, MoSAIC, Department of Imaging and Pathology, Faculty of Medicine, KU Leuven, Leuven 3000, Belgium; ²Department of Nuclear Medicine, Renji Hospital, Shanghai Jiao Tong University, School of Medicine, Shanghai 200127, China; ³Laboratory of Lipid Metabolism and Cancer, Department of Oncology, ⁴Radiopharmacy, Department of Pharmaceutical and Pharmacological Sciences, ⁵Biomedical MRI, MoSAIC, Department of Imaging and Pathology, ⁶Radiology, Department of Imaging and Pathology, Faculty of Medicine, KU Leuven, Leuven 3000, Belgium

Correspondence to: Yicheng Ni, MD, PhD. Theragnostic Laboratory, Department of Imaging and Pathology, Faculty of Medicine, KU Leuven, Herestraat 49, Leuven 3000, Belgium. Email: yicheng.ni@med.kuleuven.be.

Abstract: Compared with transplanted tumor models or genetically engineered cancer models, chemically induced primary malignancies in experimental animals can mimic the clinical cancer progress from the early stage on. Cancer caused by chemical carcinogens generally develops through three phases namely initiation, promotion and progression. Based on different mechanisms, chemical carcinogens can be divided into genotoxic and non-genotoxic ones, or complete and incomplete ones, usually with an organ-specific property. Chemical carcinogens can be classified upon their origins such as environmental pollutants, cooked meat derived carcinogens, N-nitroso compounds, food additives, antineoplastic agents, naturally occurring substances and synthetic carcinogens, etc. Carcinogen-induced models of primary cancers can be used to evaluate the diagnostic/therapeutic effects of candidate drugs, investigate the biological influential factors, explore preventive measures for carcinogenicity, and better understand molecular mechanisms involved in tumor initiation, promotion and progression. Among commonly adopted cancer models, chemically induced primary malignancies in mammals have several advantages including the easy procedures, fruitful tumor generation and high analogy to clinical human primary cancers. However, in addition to the time-consuming process, the major drawback of chemical carcinogenesis for translational research is the difficulty in noninvasive tumor burden assessment in small animals. Like human cancers, tumors occur unpredictably also among animals in terms of timing, location and the number of lesions. Thanks to the availability of magnetic resonance imaging (MRI) with various advantages such as ionizing-free scanning, superb soft tissue contrast, multi-parametric information, and utility of diverse contrast agents, now a workable solution to this bottleneck problem is to apply MRI for noninvasive detection, diagnosis and therapeutic monitoring on those otherwise uncontrollable animal models with primary cancers. Moreover, it is foreseeable that the combined use of chemically induced primary cancer models and molecular imaging techniques may help to develop new anticancer diagnostics and therapeutics.

Keywords: Chemically induced primary malignancy; carcinogen; carcinogenesis; noninvasive imaging; magnetic resonance imaging (MRI)

Submitted Jun 04, 2015. Accepted for publication Jun 15, 2015.

doi: 10.3978/j.issn.2223-4292.2015.06.01

View this article at: <http://dx.doi.org/10.3978/j.issn.2223-4292.2015.06.01>

Introduction

Cancer is a systemic disease that initially presents local manifestations (1) and later advances in a multistep process with various hallmarks including rapid proliferation, resisting cell death, neoangiogenesis, local invasion, remote metastasis, etc. (2). Due to diverse pathologic features, genomic variations and patient outcomes in clinic oncology, no individual animal models can completely mimic this complex progress. In order to simulate different human cancer pathologies and address various research questions, there have been numerous animal cancer models including (I) transplanted tumors, (II) genetically engineered models and (III) environmentally caused cancers such as chemically induced malignancies.

Models of transplantable tumor are generated by transplantation of living cancer cell suspension or solid tumor tissue from a donor to another animal, which can be further classified as either xenograft or allograft based on whether the tumor donor and the host belong to different species or the same species of close genome (3). In the xenograft, the host animals are usually immune-compromised and tolerable to cross-species cancer cells (3). In contrast, allograft refers to the tumor transplantation strictly between the individuals from the same species. In both, the transplants can be orthotopic, subcutaneous or intravascular in order to study different stages of the tumor progression (4).

The genetically engineered model (GEM) for cancer refers to an animal strain with manipulated genomic alterations, specifically involving the overexpression of an oncogene or the loss of a tumor suppressor gene function (5). The GEMs can be simply divided into transgenic and endogenous ones (6). Such models allow the investigation of the functions of certain genes or pathways during tumor development or progression (7). Despite their sophistication in preparation, some available GEMs may accurately simulate the pathophysiology and molecular mechanism of certain human cancers (6).

Environmentally induced cancer models refer to particular cancer types developed in animals that have been exposed to certain environmental risk factor such as carcinogenic chemicals, radiation, viruses, microbial flora or even physical stimuli (8). Some GEMs are also applied in combination with the environmental exposures. Such primary cancer models can simulate the originality, evolution and consequence of clinical cancer process from the early initiation, through midterm progression and clinical onset until late

exacerbation, and are ideally used to investigate the etiology, prevention, diagnosis and treatment of cancer in all stages. Furthermore, the primary tumor lesions also possess the histological complexity and heterogeneity comparable to the actual human malignancies (3).

Among the environmentally induced cancers, the chemically induced cancer model is generated by certain synthetic chemical compounds that are exposed to the body via ingestion, inhalation, injection, dermal absorption or other ways. Here, we highlight the chemically induced primary cancer models due to their diverse advantages including non- or less invasiveness, abundant tumor burden, full spectrum of cancer types, and reproducible process. Moreover, due to the very similar carcinogenesis process, chemically induced cancers mimic the human cancer occurrence from the initiating stage on.

Mechanisms of primary cancer development

Chemical carcinogenesis usually undergoes three-steps, namely initiation, promotion and progression (*Figure 1*). The plausible cellular and molecular mechanisms involve interactions or covalent binding of carcinogens with intracellular DNA, RNA and proteins, resulting in genemutational alterations (9).

Tumor initiation, promotion and progression

Initiation is the first step in cancer development. Initiators are the chemicals that are often not reactive with DNA, but altered by drug-metabolizing enzymes in the body and are then able to cause changes in DNA (mutations) often after a covalent binding (7). Many initiators are specific to particular species or tissue types. Initiation is irreversible, i.e., once a particular cell has been affected by an initiator it is susceptible to promotion. Since initiation causes permanent genetic change, any daughter cells from the division of the mutated cell will also carry the mutation. There is a linear relationship between the dose of initiator and the quantity of produced tumor cells, i.e., the more exposure the higher risk of carcinogenesis.

Promotion is the second step that occurs on those cells already mutated by an initiator (10). The promoters refer to the compounds that promote the proliferation of the cell into a large number of daughter cells containing the mutation created by the initiator. Promoters take effect only when the organism has been previously exposed to

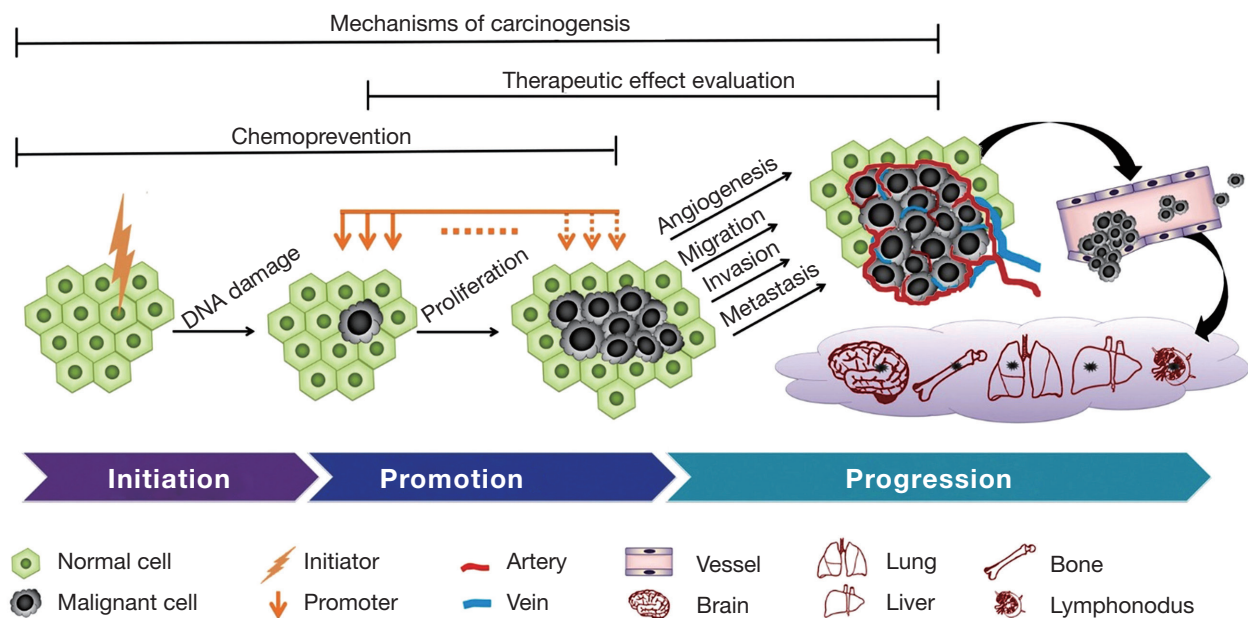


Figure 1 Three-phase process of carcinogenesis upon carcinogen administration and the various research applications based on animal models of primary cancers.

an initiator. Unlike initiators, promoters do not covalently bind to macromolecules or DNA within the cell, but many bind to receptors on the cell surface to affect intra-cellular pathways that increase cell proliferation (11). Two categories of promoters exist: specific promoters that interact with receptors on or in target cells and nonspecific promoters that alter gene expression without involving a known receptor. Tumor growth thus promoted is dose-dependent with a threshold and a maximum effect of promoters, i.e., very low doses will not promote tumor development and extremely high doses will not produce more risk. Promoters do not necessarily cause cancer on their own, but increase the clonal expansion of initiated cells, and ultimately leads to malignancy (11).

The third step progression refers to the serial transformations from a benign tumor to a neoplasm and to malignancy. Progression is associated with karyotypic changes since most advanced tumors show aneuploidy with the wrong number of chromosomes. This karyotypic change is coupled with an increased growth rate, invasiveness, metastasis and alterations in biochemistry and morphology due to the continuing mutations or genetic instability (12). Once this step is triggered, progression is irreversible.

In the practical animal models of malignancy, a two-stage carcinogenesis strategy is frequently employed to shorten the cancer development period by treating animals with an

organ-specific cancer initiator followed by a promoter (13).

Genotoxic and non-genotoxic carcinogens

The mechanisms of action of carcinogens can be simply divided into genotoxic (GTX) and non-genotoxic (NGTX) ones. GTX events may damage DNA or chromosome by direct interactions (14), while in the NGTX procedure carcinogens are capable of eliciting more diverse cellular effects largely via biotransformation, which subsequently cause multiple cellular signal transduction alterations (12,15).

GTX carcinogens, acting as electrophiles, can covalently bind to and interact with DNA which induces DNA adducts and mutations (16,17). Thus, GTX carcinogens may be considered as the tumor initiators. For example, benzo(a) pyrene (BaP) is able to form bulky BaP-DNA adducts and basic sites, or alternatively cause DNA damage by the reactive oxygen species (ROS) and metabolites produced during metabolic processing (18). From carcinogen risk assessment, GTX can be further divided into three groups: initiators with clear DNA-reactive function, borderline initiators, and weak initiators genotoxic through secondary mechanisms (12).

As opposed to GTX carcinogens, NGTX carcinogens do not affect DNA directly but target a series of physiological processes modulating cell growth, division,

chronic inflammation (19), immunosuppression, ROS, steroid hormone receptor (SHR) activation and epigenetic silencing (20) by the generation of their metabolites catalyzed by cytochrome P450 (CYP) (12,21). Commonly, NGTX carcinogens, acting as promoters, function through several different modes including pro-mitogenesis by phenobarbital (PB) (22), receptor-interacting protein-mediated pathways (19) such as 2,3,7,8-tetrachlorodibenzo-p-dioxin (TCDD) (23,24) and asbestos (25), gap junction intercellular communication (26) or cytotoxicity like chloroform. A classic example is 2,2,4-trimethylpentane (TMP), which is a classical promoter of renal cancer in male rat. As a representative nephrotoxic isoparaffinic component of unleaded gasoline, the metabolites of TMP can reversibly bind to alpha 2u-globulin, which decreases the catabolism of alpha 2u-globulin in the kidney and results in chronic lysosomal overload, cell death and cell compensatory proliferation leading to kidney cancer (27).

Complete and incomplete carcinogens

In terms of the participation in different carcinogenesis phases, carcinogens can be also regarded as complete or incomplete carcinogens.

The complete carcinogens have the capability to induce cancer without the participation of an additional tumor-promoting agent, which means the complete carcinogens function as both initiators and promoters simultaneously under proper dosage and exposure time (10,28), taking polycyclic aromatic hydrocarbons (PAH) as an example (23).

The incomplete carcinogens refer to the mutagenic chemicals either instigating DNA damage irreversibly or accelerating benign lesion growth, but not capable of initiating malignancy (28).

Organ-specific tumor induction by chemicals

Although there are different administrating types of carcinogens including oral, dermal, inhalation or even intraperitoneal routes, carcinogens tend to target certain particular peripheral tissues via blood circulation (29-32). More than 80% of tested chemical carcinogens were reported to be positive in at least the following 8 most frequent targeting organs mainly in different mammal species: the liver, lung, mammary gland, stomach, vascular system, kidney, hematopoietic system and urinary bladder (33). The biological basic mechanisms of underlying organ specificity are variable.

One possible explanation is that the cytochrome P450

(CYP) expression profiles in response to carcinogens in various tissue types differ markedly (34), which is critical to determine what particular tissue develops tumor (21,23). In the promotion stage, the CYP system triggers the carcinogenesis by catalyzing the activation of promoters from procarcinogen status, resulting in formation of DNA adducts (35,36). Therefore, the preference and regulation of CYP in different substrates are central to the occurrences of chemically induced malignancies in different organs (21,29,37).

For other chemical carcinogens, their sex hormone activities were also reported to contribute to the tissue specific properties. For example, in breast cancer, estrogen is a well-known risk factor. The breast carcinogen 2-amino-1-methyl-6-phenylimidazo(4,5-b)pyridine (PhIP) works as the agonists of estrogen receptor alpha (ER α) and affects miRNA specifically in mammary gland during the initiation and progression of breast cancer (38).

Classifications of chemical carcinogens

A wide variety of chemical carcinogens have been proven capable of inducing cancers in experimental animals after prolonged or excessive exposures, comprising cooked meat derived carcinogens, food additives, industrial chemicals and environmental pollutants, tobacco smoke carcinogens, antineoplastic agents, naturally occurring compounds and synthetic carcinogens (*Table 1*) (16,23,49).

N-Nitroso compounds

N-nitroso compounds (NOCs) have initially been brought into attention for their carcinogenicity most likely from preserved food (143,144), drinking water contamination (145,146) and tobacco smoking (147).

Some NOCs like N-nitrosodiethylamine (DNA) and N-methyl-N-nitro-N-nitrosoguanidine (MNNG), can be endogenously converted in our stomach and bowel from nitrites that are usually added to preserve processed meats like bacon, ham, sausage (143,144).

DNA is a powerful and consistent hepatocarcinogen that is able to induce multifocal primary liver tumors such as hepatocellular carcinoma (HCC) superimposed on varying degrees of liver cirrhosis not only in rodents (39,148) but in monkey as well (49). Importantly, DNA-induced hepatocarcinogenesis can highly simulate the histopathological evolution of clinical liver cancers (149). DNA is usually administrated to male Sprague Dawley (SD) or Wistar rats (150-300 g) in the drinking water at

Table 1 Classification of some chemical carcinogens in experimental animal models

Classification	Compound	Abbreviation	Mechanism	Target organ	Susceptible species	
N-nitroso compound (NOC)	N-Nitrosodiethylamine	DENA	Complete carcinogen/ initiator	Liver	Rat (35,39-46), mouse (47,48), primate (49)	
			Initiator	Kidney	Rat (50), mouse (50)	
			Initiator	Lung	Rat (51), mouse (52)	
		N-Methyl-No-nitro-N-nitrosoguanidine	MNNG	Complete carcinogen	Stomach	Rat (53,54), primate (49)
		N-Nitrosodimethylamine	NDMA	Initiator	Liver	Rat (55), mouse (56)
	Initiator			Esophagus	Rat (56)	
		Dimethylnitrosamine	DMN	Initiator	Liver	Rat (57)
	4-(Methylnitrosamino)-1-(3-pyridyl)-1-butanone	NNK	Complete carcinogen/ initiator	Lung	Mouse (58-61), rat (62,63)	
Complete carcinogen			Pancreas	Hamster (64)		
	N-Butyl-N-(4-hydroxybutyl) nitrosamine	BBN	Complete carcinogen	Bladder	Mouse (65-69), rat (70-72)	
Heterocyclic amine (HCA)	2-Amino-1-methyl-6-phenylimidazo[4,5-b]pyridine	PhIP	Complete carcinogen	Breast	Rat (73,74)	
			Complete carcinogen	Colon	Rat (75,76)	
			Complete carcinogen	Prostate	Rat (76,77)	
		2-Amino-3,8-dimethylimidazo-[4,5-f]quinoxaline	MeIQx	Initiator	Liver	Rat (78,79)
	Complete carcinogen			Lung	Mouse (80)	
	2-Amino-3-methylimidazo[4,5-f]quinoline	IQ	Initiator	Liver	Rat (81,82), primate (49)	
Initiator			Colon	Rat (81,82), mouse (83)		
Polycyclic aromatic hydrocarbon (PAH)	2-Acetylamino-fluorene	2-AAF	Promoter	Liver	Rat (42,84), mouse (44,85)	
	7,12-Dimethylbenzanthracene	DMBA	Complete carcinogen	Breast	Rat (86-92), mouse (93,94)	
			Initiator	Skin	Mouse (87)	
			Complete carcinogen	Oral cavity	Hamster (95)	
		Benzo[a]pyrene	BaP	Complete carcinogen	Lung	Mouse (96,97)
	Complete carcinogen			Stomach	Mouse (98)	
	Complete carcinogen			Colon	Mouse (99)	
	3-Methylcholanthrene	MCA	Initiator	Lung	Mouse (100), rat (101)	
Food additive	Potassium bromate	KBrO3	Complete carcinogen	Kidney	Rat (102)	
Polychlorinated biphenyl (PCB)	2,3,7,8-Tetrachlorodibenzo-p-dioxin	TCDD	Promoter/initiator	Liver	Mouse (103), Rat (104)	
			Promoter	Lung	Mouse (61), Rat (104)	
Antineoplastic agent	N-Methyl-N-nitrosourea	MNU	Complete carcinogen	Breast	Rat (73,105-109), mouse (110)	
			Initiator	Prostate	Gerbil (111), rat (112), primate (49)	
			Initiator	Thyroid	Rat (113)	
			Complete carcinogen	Esophagus	Primate (49)	
			Complete carcinogen	Stomach	Mouse (114), primate (49)	
			Complete carcinogen	Colorectum	Shrew (114)	

Table 1 (continued)

Table 1 (continued)

Classification	Compound	Abbreviation	Mechanism	Target organ	Susceptible species
Naturally occurring compound	Aflatoxin B1	AFB1	Complete carcinogen	Liver	Rat (115), mouse (116,117), fish (118), primate (49)
	Asbestos	/	Complete carcinogen	Lung, pleura	Rat (119), mouse (120), hamster (120)
	Aristolochic acid	AA	Complete carcinogen	Peritoneum	Mouse (121), rat (122)
Synthetic carcinogen	1,2-Dimethylhydrazine dihydrochloride	DMH	Complete carcinogen	Forestomach	Rat (123), mouse (124)
	Azoxymethane	AOM	Complete carcinogen	Kidney	Rat (123), mouse (124)
	Methylazoxymethanol	MAM	Complete carcinogen	Colorectum	Rat (125-128), mouse (129)
	4-Nitroquinoline 1-oxide	4NQO	Complete carcinogen	Colorectum	Rat (130), mouse (130)
	EthylNitrosourea	ENU	Complete carcinogen	Colorectum	Mouse (131)
	N-Nitrosobis(2-hydroxypropyl) amine	BHP	Complete carcinogen	Oral cavity, esophagus	Rat (132,133), mouse (133,134)
	Phenobarbital	PB	Promoter	Central nervous system	Rat (135,136), mouse (137,138)
			Complete carcinogen	Lung	Rat (139,140)
			Complete carcinogen	Pancreas	Hamster (139,141)
			Promoter	Liver	Rat (45,142)

100 ppm (40), or by frequent gavage feeding at 10 mg/kg body weight (41,150). However, this classical liver cancer model has been proven time consuming, as the appearance of recognizable tumor lesions in most cases occurs after a quite long latent period, normally 16-32 weeks after the first DENA exposure. In addition, DENA also acts as initiator for renal and pulmonary cancers in rodents (50-53).

MNNG is a well-known gastric carcinogen in rodents and primates (49,54,151).

N-nitrosodimethylamine (NDMA) acts as a initiator of hepatocarcinogenesis (56) and esophageal carcinogenesis (57) in rodents, while dimethylnitrosamine (DMN), the NDMA's precursor, is used as a mutagen for liver cancer in rats (152).

4-(Methylnitrosamino)-1-(3-pyridyl)-1-butanone (NNK) and its major metabolite 4-(methylnitrosamino)-1-(3-pyridyl)-1-butanol (NNAL) are powerful determinants of pulmonary cancer incidence, and biomarkers indicating the exposure of tobacco smoke (147). For the experimental model, female A/J mouse is a more sensitive strain to study lung cancer (58-60,62,63,153-155). Practically, mice treated with a single intraperitoneal injection of NNK (100 mg/kg body weight) developed lung cancer by 30 weeks at a

100% tumor incidence (61,156). Furthermore, exposure of 2,3,7,8-tetrachlorodibenzo-p-dioxin (TCDD) combined with NNK could significantly increase lung cancer development (61). Besides, hamsters developed pancreatic cancer as well upon NNK exposure, but with a lower organ-specificity (64).

Exposure of rodents to N-butyl-N-(4-hydroxybutyl) nitrosamine (BBN) reproducibly induces high-grade and invasive squamous cell urinary bladder cancers (65-67,70-72), which resembles the development of the most human bladder cancer based on histopathology (157). For mice, after 2-6 weeks treatment of BBN at 500 ppm in the drinking water, mutagenesis in urothelial cells was greater than the spontaneous mutation background and that in the smooth muscle cells of the urinary bladder (68); after 20 weeks of BBN treatment at the same concentration, bladder cancer developed in all treated mice (66). For models in both F334 and Wistar rats, bladder cancers were highly induced during 6-8 months after 8- to 14-week single exposure of BBN at 500 ppm in the drinking water (70). In a two-stage model, phenylethyl isothiocyanate (PEITC) was reported to promote the development of transitional cell carcinomas at 1,000 ppm in diet from the 4th to 8th week

combined with BBN administration (13).

Heterocyclic amines

Red meats, cooked at high temperature and for long periods of time, tend to promote several carcinogenic compounds such as heterocyclic amines (HCAs) (143,158,159).

HCAs represent a group of mutagenic compounds which are able to increase the risk of cancer in various organs in rodents (16,23,49). Three HCAs are frequently used in animal cancer models, i.e., 2-amino-1-methyl-6-phenylimidazo(4,5-b)pyridine (PhIP), 2-amino-3,8-dimethylimidazo[4,5-f]quinoxaline (MeIQx), and 2-amino-3-methylimidazo[4,5-f]quinoline (IQ) (49).

PhIP is the most abundant HCA subtype, which has complete carcinogenicity of DNA damaging and mutagenic activities as an initiator, and estrogenic activity as a promoter as well. Exposure of rats to PhIP can cause cancers in breast (73), colorectum (75,76) and prostate (76,77).

MeIQx exposure leads to increased liver and lung cancer risks in rodents mainly as a genotoxic carcinogen during the initiation phase (78-80).

Similarly, IQ is a genotoxic carcinogen in rodents to induce liver and colon tumors (81-83), and in primate as well to induce liver cancer (49).

Polycyclic aromatic hydrocarbons

Similarly, polycyclic aromatic hydrocarbons (PAHs) are also generated during meat grilling and roasting (143,158). They include 2-acetyl-amino-fluorene (2-AAF), 7,12-dimethylbenzanthracene (DMBA), benz[a]anthracene (BaA), benzo[a]pyrene (BaP), and 3-methylcholanthrene (MCA), all with high carcinogenic properties (160-162).

2-AAF has been largely used as a promoter in the 8-week Solt-Farber protocol for multistep experimental hepatocarcinogenesis in rats. Briefly, initiation is triggered by a single intraperitoneal injection of DENA, normally at a dose of 200 mg/kg body weight; the initiated hepatocytes are then promoted by either feeding rats a daily diet containing 2-AAF or by gavage of 4-6 single doses (normally 20 mg/kg body weight/day) of 2-AAF on consecutive days at 1-2 weeks after DENA initiation; afterwards rats are subjected to a 2/3 partial hepatectomy to stimulate mitosis of selected initiated hepatocytes (42-44,84,163,164). Immunohistochemical staining of the placental glutathione s-transferase (GST-P) is frequently used as an accurate marker enzyme to detect liver preneoplastic focal lesions

in liver cancer and indicates the endpoint of evaluation of certain chemopreventive agents (42,43,164). In mice models, 2-AAF was also found to induce liver mutations (85,165).

As a complete carcinogen, DMBA is more efficient than the other PAHs in inducing breast cancer, which is routinely used in female SD rats at the age of around 50 days (86,87). Previous studies have proved that a single dose of 50-100 mg/kg of DMBA by gavage is able to cause mammary tumors at the incidence of 100% (87). Furthermore, the developed cancerous lumps are morphologically heterogeneous and hormone dependent (86). However, in the mouse skin squamous carcinogenetic model, DMBA is used as an initiator combined with the promoter 12-O-tetradecanoylphorbol-13-acetate (TPA) (166).

BaP is a main suggested indicator of PAH, which causes cancers usually in the lung, stomach, colon and other organs and tissues (98,99). Meanwhile, their chlorinated compounds, e.g., Cl-BaA, have also been reported showing the organ-specific distribution and even greater accumulation compared with their parents, and presenting carcinogenic impacts in various organs like the liver (167).

MCA serves as an initiator of lung cancer in rodents, usually followed by the promoter butylated hydroxytoluene (BHT) (100,168).

Potassium bromate

Potassium bromate (KBrO₃) used to be a flour improver widely used as a food additive in the bread-making process, while bromate is also a disinfection byproduct formed in drinking water (169). KBrO₃ acts as a complete carcinogen in renal cancer development in rat models (102).

Polychlorinated biphenyls

Polychlorinated biphenyls (PCBs) are a class of dioxin-like carcinogens, which are formed as the industrial by-products and known as the widespread environmental contaminants. The best studied member is 2,3,7,8-tetrachlorodibenzo-*p*-dioxin (TCDD) (104).

TCDD has no direct genotoxicity but acts as a multi-site, multi-species tumor promoter, which might be mediated either by the agonist-specific activation of hydrocarbon receptor (AhR) that leads to the transcription of cytochrome P450 enzymes and induces oxidative stress, or by the alterations of Akt and ERK apoptosis signaling pathways which causes attenuation of apoptosis (61,103,104,170).

N-Methyl-N-nitrosourea

N-Methyl-N-nitrosourea (MNU) was originally designed as a chemotherapeutic alkylating compound, but later proven to exert direct mammary carcinogenic effects (171), a single dose of which has been shown to induce breast cancer in SD rats (105,106). Notably, although both MUN and DMBA-induced mammary cancers are generally hormone-dependent (4), MUN-induced mammary cancers tend to be locally aggressive and spontaneously metastasized, which are quite different from DMBA-induced breast tumors, and thus suitable for study of malignant progression or the advanced stage of mammary cancers (172). Besides, MNU is also able to enhance various cancers in experimental animals such as esophageal, gastric and colorectal malignancies (49,111,114), and initiate prostate and thyroid cancers (49,112,113,173).

Naturally occurring compounds

- (I) Aflatoxins are a group of mycotoxins naturally produced from *Aspergillus flavus* or *Aspergillus parasiticus* as secondary fungal metabolites. They frequently contaminate foods and impose a global problem (174). Aflatoxin B1 (AFB1) is a well-known hepatocarcinogen acting with potent mutagenicity and cytotoxicity in experimental models (49,115-118,175-177);
- (II) Asbestos fibers consist of several distinct types occurring in soils and rocks, which used to be heavily used in the industry. Asbestos has been identified to produce oxygen derivatives in cytotoxicity and DNA double strand breaks extensively (178,179). In the experimental murine models, asbestos has been used to develop pleural and peritoneal malignant mesotheliomas by intratracheal instillation and intraperitoneal injection receptively (119-122,125);
- (III) Aristolochic acids (AAs) are major components extracted from *Aristolochia* plants, which used to be an ancient herbal medicine, but have been identified as a strong nephrotoxin for the first time by Belgian scientists in 1991 (180-182). In rodents, AA is a potent carcinogen. Long term oral administration of AA both in rats and mice leads to multiple tumors largely in forestomach and kidney (123,124).

Synthetic carcinogens

- (I) 1,2-Dimethylhydrazine dihydrochloride (DMH)

and its inter-metabolites azoxymethane (AOM) and methylazoxymethanol (MAM) are a group of synthetic compounds with the general structure of cycasin, which are highly specific complete carcinogens for rodent colorectal tumor models (126-132,183);

- (II) 4-Nitroquinoline 1-oxide (4NQO) is a manufactured derivative of quinolone for research purposes, possessing a heterocyclic aromatic structure. As a complete carcinogen, 4NQO is able to induce all the stages of oral squamous cell carcinoma, which has been identified to highly mimic the histological and molecular features in human oral cancers (133,184);
- (III) Ethylnitrosourea (ENU) is a highly potent mutagen first reported by Bill Russell *et al.* in 1979, which is largely used as neurotropic carcinogen to generate glioma rat models (135,136). Additionally, infant Big Blue transgenic mice are susceptible to ENU-induced hepatic mutation (185); and exposure to ENU markedly increases mammary tumor multiplicity and incidence in mice defective in *Apc* tumor suppressor gene (137);
- (IV) N-Nitrosobis(2-hydroxypropyl)amine (BHP) is a hydroxylated dipropyl nitrosamine first synthesized by Krüger *et al.* in 1974 (139). The complete carcinogenic effects of BHP alter due to the routes of treatment and the host species as well. For instance, BHP is known as a pancreatic carcinogen by subcutaneous injection in Syrian golden hamsters (140,141), but a pulmonary carcinogen by oral administration in Wistar rats (139,142);
- (V) As a synthetic non-genotoxic carcinogen or promoter, phenobarbital (PB) compound is extensively used in rodents to enhance hepatic and renal carcinogenesis (35,45,186).

Experimental applications

The above-specified chemicals only exemplify a little bit of the immense known and unknown carcinogens, of which the experimental applications are still preliminary and empirical, leaving rooms for further exploitations. Nevertheless, primary cancer models are useful tools for performing various fundamental and translational investigations including (I) understanding biological and molecular mechanisms involved in tumor initiation, promotion and progression; (II) looking into influential and preventive factors of carcinogenesis; and (III) evaluating the diagnostic/therapeutic potentials of candidate drugs on induced models of primary tumors (*Figure 1*).

Related genes and pathways in carcinogenetic process

Cancer development and progression may involve multiple abnormal aspects such as sustained proliferation, resisting cell death, migration and metastasis, angiogenesis, interaction with immune system, reprogramming energy metabolism, etc. (2). By using many multistage carcinogens, the molecular changes associated with the initiation and promotion of cancer development are possible to be analyzed.

A range of genomic alterations and somatic mutations of different oncogenes and tumor suppressors have been recently found in various human malignancies, while the mutation-inducing factors remain not fully elucidated. For instance, in human lung adenomas and adenocarcinomas, the epidermal growth factor receptor (*EGFR*) gene alterations have been frequently reported; from the representative rodent lung cancer models generated by NNK, BHP, MeIQx, urethane, as well as X-ray, the mutation patterns of *Egfr* and *K-ras* were able to be detected and compared with equivalent human lesions to better understand the upstream regulation (156). Moreover, using a cross-species analysis of global gene expression profiles, differentially expressed genes and relative altered molecular pathways allow mining of the promising target genes for anti-cancer strategies (67).

In addition, when combined with carcinogen treatments, GEM such as *p16*, *p19*, *p53*, *Apc*, *c-Ha-ras*, *myr-Akt*, *TGF- α* and *Klf6* models show their unique advantages, which not only enable the assessment on effects of these genes on the tumor progression, but provide abundant information about the regulation of intracellular signaling networks (47,73,138,187-192).

Cancer preventive and influential factors for tumorigenesis

Research innovations have contributed to cancer therapeutic strategies by developing new technologies or drugs. However, according to the overview of global cancer burden issued from WHO, overall cancer incidence and mortality rates worldwide have been rising (193). Therefore, more attentions and efforts are required for research in the field of cancer prevention. Especially, as one of the most promising approaches to reduce cancer risks, chemoprevention is a method to suppress, delay or even reverse carcinogenesis during the early stage by means of specific chemical substances (84,98). In the experimental animal models, the evaluation of preventive effects of various drugs on tumor formation and progression can

be achieved simply by early administration of the drug together with the carcinogen treatment (66,194) or even in advance of the carcinogen exposure (35,195).

Recently, many natural compounds extracted from medicinal plants such as resveratrol, curcumin, capsaicin, allicin, etc. have been reported to demonstrate chemopreventive activities (43,196), largely because of their potent activities against oxidative stress and toxic injuries that continuously occur during the entire carcinogenetic process including initiation, promotion and progression. For example, in the case of the chemically induced rat hepatocarcinogenesis, lutein, a kind of carotenoid existing in green leafy vegetables, inhibited hepatic preneoplastic lesions when administrated during promotion and DNA damage stage (44). Some other natural substances, e.g., aqueous extract of the dried leaf of *A. compressa*, a component of herbal tea in Mexico, astragalus membranaceus, a natural herbal medicine in traditional Chinese medicine for liver diseases (164), and betaine, particularly found in wheat, spinach and sugar beets (40) are also promising to delay rat hepatocarcinogenesis (195).

Preclinical evaluations of new specific contrast agents

Diagnostic imaging provides essential information for early diagnosis, precise staging, timely clinical treatment, and appropriated palliative therapies of various cancers in clinical patients. However, the main challenge lies in the relatively insufficient soft-tissue contrast between malignant lesion and surrounding tissues. In this context, different new specific contrast agents in preclinical settings have been explored, which extend the applications of different imaging modalities from anatomical structure to functional assessment or even to molecular imaging, particularly in the field of MRI, which offers superior life tissue contrast (3). In previous preclinical evaluations of MRI diagnosis in DENA-induced rat liver cancers, multifocal liver tumors were better detected and characterized by using liver specific contrast agents such as Mn-DPDP and Gd-EOB-DTPA relative to nonspecific contrast agents Gd-DTPA and Gd-DOTA (3,148).

Therapeutic strategies for primary malignancies

Chemically induced cancer models are also widely used to explore the therapeutic potencies of various treatments (39,66,86,87,166,194,197,198), owing to the ability to

better mimic the complexity of clinical multistep malignant process, and to be more predictive in preclinical studies as well as basic research. For instance, in the study on the Rapamycin treatment upon the two-stage mouse skin tumor model, the cancer development was first initiated by DMBA and subsequently promoted by phorbol esters, which allowed to test the therapeutic effects of Rapamycin during the entire process of carcinogenesis, including both the early lesions around 9-10 weeks after the initiation and the advanced lesions after approximately 16-18 weeks of initiation (166).

Advantages and disadvantages

Among commonly adopted cancer models, chemically induced primary malignancies in mammal have multiple advantages including the eased procedures, abundant tumor generation and high analogy to human primary cancers seen in the clinic.

First of all, chemically induced primary cancer models are simple and economical due to the fact that carcinogens can be easily administrated via single intraperitoneal injection, continuous gavage feeding, repeated subcutaneous injection, daily drinking water or routine dietary supplement, requiring neither experienced manipulators nor complicated facilities or devices.

Secondly, carcinogen induced tumor models are productive owing to high success rate and multifocal lesions simultaneously induced in the targeted organs. Moreover, animal primary cancer models can produce a full spectrum of primary cancers, frequently with various sizes, differentiation degrees, and even tumor origins. Take DENA-initiated rodent hepatocarcinogenesis as an example, multifocal primary liver tumors on general liver cirrhosis can be successfully induced in SD rats after months of DENA gavage feeding (199). This enables the comparison between benign and malignant neoplasia, tumor lesions and paratumor tissues in the same carrier, thus contributing to reliable evaluation of therapeutic effects of newly discovered drugs, and exploratory study of diagnostic potentials of different imaging technologies (148,200).

Additionally, primary cancer models such as DENA-induced hepatocarcinogenesis (149), BBN-induced bladder cancer (157), NNK-induced lung cancer (62) and 4NQO-induced oral carcinogenesis (133) can ideally resemble the clinical course and evolution of multiple human cancers with respect to the similar morphology, histopathology characteristics and molecular changes. Furthermore,

different carcinogens are able to cause different cancer subtypes with variant cancer biologic features. For instance, DMBA and MNU are two classical carcinogens frequently used to induce mammary tumors. The majority of DMBA-induced tumors are hormone dependent, while MUN-induced tumors tend to be hormone independent and aggressive (107,172). Therefore, primary cancer models also provide us with a tool with great value for better understanding of the mechanisms of cancer pathogenesis.

However, there are also some disadvantages of such models. In addition to the time-consuming progress of carcinogenesis, the major drawback is the difficulty in noninvasive tumor burden assessment in small living animals, because, like cancer patients in reality, tumors occur unpredictably and heterogeneously in terms of timing, location, number, size, differentiation and blood supply of lesions (3). Especially for the visceral tumors in the liver, lung, kidney or pancreas, it is quite difficult in detection of newly generated tumor lesions and monitor of their growth in individual organs. Consequently, this brings challenges in grouping and defining the endpoints of model building-up. In fact, for some experimental studies aiming at investigating cancer development, chemoprevention or cancer therapy of primary cancers in animals, tumor formation and therapeutic effects can only be assessed by histopathology via sacrificing the animals and removing the target organs (35,66), or via biopsy during the process as a supplemental method (200).

Workable solution: noninvasive MR imaging

Compared with the other clinical imaging techniques like computed tomography (CT) or ultrasonography (US), and nuclear imaging such as single photon emission computed tomography (SPECT) or positron emission tomography (PET), MRI and US are noninvasive and harmless modalities for the diagnosis and therapeutic evaluation of visceral tumors. However, the application of US for animals, especially rodents, is limited mainly due to the small size of animals and relative low sensitivity as a result of the low frequency of the usual echography probes. On the other hand, multiparametric MRI (MP-MRI) has been increasingly used for detection, localization, stage and even characterization of experimental models with primary cancers. Importantly, all these imaging results in small animals like rats can be simply achieved by clinical MR scanners (3).

Detection and diagnosis

Early diagnosis of multifocal visceral tumors has been a big challenge in both clinical and experimental situations. MRI can be ideally used for the morphological evaluation of primary cancers owing to the high sensitivity, resolution and, consequently, the excellent soft tissue contrasts.

For morphological imaging, tumor lesions tend to appear hyperintense on T2 weighted imaging (T2WI), but iso- to slight hypointense on T1 weighted imaging (T1WI), which can become hyperintense by contrast-enhanced T1WI after using conventional extracellular contrast agents (CAs) like gadoterate meglumine (Gd-DOTA). According to the earlier report about the application of MRI performed in a 1.0T Magnetom SP (Siemens, Erlangen, Germany) on primary liver cancer induced by DENA, tumor lesions can be detected with a minimum diameter of 2 mm, and in numbers varying from 1 to ≥ 10 (199). Recently, by using a clinical 3.0T whole body MR magnet (Trio; Siemens, Erlangen, Germany) for monitoring hepatic tumor growth we also managed to observe the original small tumor lesions continuously, which enabled us to differentiate between the static benign lesion and fast-growing malignant HCC (Figure 2). Moreover, during the real progress of cancer generation in rat models, MRI could reveal complex intratumoral changes along with tumor growth, for instance tumoral hemorrhage (Figure 3), which helped us to intensively follow up the dynamic changes of local lesions, evaluate the systemic condition of tumor-bearing animals, make proper decision on the following treatment, and secure the designed experiments being successfully performed in animals with other simultaneously occurring tumor lesions.

By using organ-specific CAs, MRI can provide various functional information of tumor lesions. For instance, the hepatobiliary CAs, such as mangafodipir trisodium (Mn-DPDP), gadoxetic acid disodium (Gd-EOB-DTPA) and gadobenate dimeglumine (Gd-BOPTA), can be specifically taken up by hepatocytes through corresponding transmembrane proteins and excreted into bile canaliculi through conjugated export pumps. Therefore, these organ-specific CAs may help distinguish tumor and tumor-bearing organ, relatively well differentiated and poorly differentiated lesions with or without normal biological functions (3,199).

Treatment and therapeutic monitoring

In addition to the *in vivo* monitoring of tumor growth before treatment, MRI, as a harmless imaging technique without ionizing radiation, is also strong at providing real-time follow-up imaging serially at different time points as frequently as every several minutes, hours or days, which enables comparing the therapeutic effects.

For evaluation of therapeutic effects, MRI also provides multi-parametric functional information (201). For instance, dynamic contrast enhanced (DCE)-MRI can help evaluate tumor vascular properties including blood flow, blood volume, vascular permeability and extravascular extracellular space, while apparent diffusion coefficient (ADC) derived from diffusion-weighted imaging (DWI) can help distinguish the lytic necrosis of less restricted diffusion caused by therapy from the non-reacted viable tumor (202-206).

Developing new diagnostics and therapeutics or theragnostics

Generally, effective anticancer therapy may cause tumor growth inhibition or even tumor necrosis. Necrosis avid contrast agents (NACAs) have been largely explored in the past decade, which is used to image physiological and biochemical processes under *in vivo* conditions. Hypericin is a nonporphyrin NACA, extracted from the plant *Hypericum perforatum* or semi-synthesized from emodin anthraquinone (207,208). In necrosis, aminophospholipids of phosphatidylethanolamine (PE) and phosphatidylserine (PS), primarily located in the intracellular membrane, are externalized from the inner leaflet to the outer leaflet of the cell membrane (209,210). Radiolabelled hypericin has been designed to target exposed PE and PS with the breakdown of cell membrane asymmetry. Using *in vivo* MRI and scintigraphy, the previous studies have investigated the promising therapeutic effect of the combined treatment strategy of CA4P (combretastatin A4 phosphate)¹³¹I-Hyp (hypericin) or briefly OncoCiDia (211,212). To further expand the utility of hypericin to radionuclide imaging, the radiotracers such as ¹²³I-Hyp and ⁶⁴Cu-Bis-DOTA-Hyp have recently been synthesized, which allow detection and quantification with microSPECT and microPET/CT (60,207,208) with possibility to be studied in chemically induced tumor models.

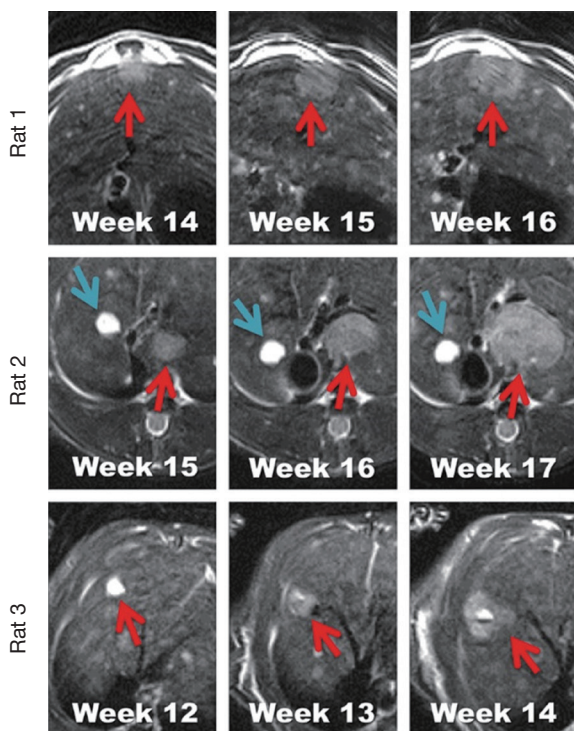


Figure 2 Magnetic resonance imaging (MRI) monitoring of dynamic tumor growth patterns of primary liver cancer model in Sprague Dawley rat (SD rats) generated by carcinogen N-nitrosodiethylamine (DENa) administration. To monitor the individual tumor growth of DENa-induced primary cancer in individual rats, noninvasive MRI was used weekly after DENa treatment. Tumor lesions appeared hyperintense on T2 weighted imaging (T2WI) (arrow). Weekly T2WIs demonstrated the gradually increased tumor sizes of 4 different lesions in 3 rats. In rat 1 (first line), tumor size rapidly increased in 3 consecutive weeks, with the diameters rising from 3 mm in week 14, to 6 mm in week 15 and to 10 mm in week 16. In rats 2 (second line), 2 lesions appeared in the same slice with the comparable sizes. Initially, lesion 1 (blue arrow) and lesion 2 (red arrow) were of similar sizes in week 15. However, the size of lesion 2 rapidly increased in the following 2 weeks, while the size of lesion 1 remained almost unchanged. By histopathology, lesion 1 proved to be a cystic benign liver tumor, but lesion 2 a hepatocellular carcinoma. At rat 3 (third line), there was a “lesion in lesion” phenomenon; different intratumoral components in the same lesion were found. At week 12, the lesion appeared a cystic feature; but from week 13 on, it evolved into a mixed lesion of solid tumor with a cystic core. T2WI (repetition time =4,320 ms; echo time =69 ms; flip angle 150°; field of view =75×56.25 mm²; imaging acquisition matrix 512×384; in plane resolution =0.15×0.15 mm²; slice thickness =2.0 mm; gap =0.4 mm) were obtained on a clinical 3.0T whole body MR magnet (Trio; Siemens, Erlangen, Germany) with a human wrist coil to focus on liver tumors.

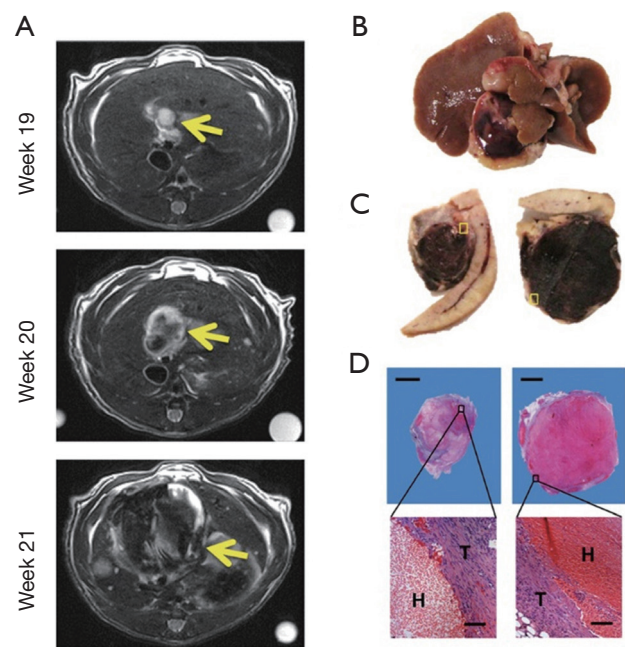


Figure 3 A case of tumor hemorrhage in a primary liver cancer model by magnetic resonance imaging (MRI) monitoring. T2 weighted imaging (T2WI) identified massive bleeding occurred rapidly in this primary liver tumor lesion from week 19 till week 21 after N-nitrosodiethylamine (DENa) administration (A). MR images were validated by macrophotography of entire liver (B). Macroscopic photograph of tumor tissue blocks (C, thickness =3 mm) and frame-focused photomicrograph of tumor tissue sections (D, H&E staining, thickness =10 μm; ×12.5 original magnification in the upper panels, scale bar =0.5 cm; ×100 original magnification in the lower panels, scale bar =50 μm.) showed massive intratumoral hemorrhage (H) surrounded by viable tumor tissue (T).

Acknowledgements

Funding: This work has partially been supported by KU Leuven projects IOF-HB/08/009 and IOF-HB/12/018, the KU Leuven Molecular Small Animal Imaging Center MoSAIC (KUL EF/05/08) and European Union (Asia-Link CfP 2006-EuropeAid/123738/ACT/Multi-Proposal No. 128-498/111).

Footnote

Conflicts of Interest: YW Liu is sponsored by a scholarship from the center of excellence *in vivo* molecular imaging research (IMIR). The corresponding author is a Bayer Lecture Chair holder.

References

- Zajicek G. Cancer as a systemic disease. *Med Hypotheses* 1978;4:193-207.
- Hanahan D, Weinberg RA. Hallmarks of cancer: the next generation. *Cell* 2011;144:646-74.
- Ni Y, Wang H, Chen F, Li J, DeKeyser F, Feng Y, Yu J, Bosmans H, Marchal G. Tumor models and specific contrast agents for small animal imaging in oncology. *Methods* 2009;48:125-38.
- Vargo-Gogola T, Rosen JM. Modelling breast cancer: one size does not fit all. *Nat Rev Cancer* 2007;7:659-72.
- Doetschman T. GI GEMs: genetically engineered mouse models of gastrointestinal disease. *Gastroenterology* 2011;140:380-385.e2.
- Frese KK, Tuveson DA. Maximizing mouse cancer models. *Nat Rev Cancer* 2007;7:645-58.
- Richmond A, Su Y. Mouse xenograft models vs GEM models for human cancer therapeutics. *Dis Model Mech* 2008;1:78-82.
- Lyman GH. Risk factors for cancer. *Prim Care* 1992;19:465-79.
- Taningher M, Saccomanno G, Santi L, Grilli S, Parodi S. Quantitative predictability of carcinogenicity of the covalent binding index of chemicals to DNA: comparison of the in vivo and in vitro assays. *Environ Health Perspect* 1990;84:183-92.
- Trosko JE. Commentary: is the concept of "tumor promotion" a useful paradigm? *Mol Carcinog* 2001;30:131-7.
- Klaunig JE, Kamendulis LM, Xu Y. Epigenetic mechanisms of chemical carcinogenesis. *Hum Exp Toxicol* 2000;19:543-55.
- Oliveira PA, Colaço A, Chaves R, Guedes-Pinto H, De-La-Cruz P LF, Lopes C. Chemical carcinogenesis. *An Acad Bras Cienc* 2007;79:593-616.
- Yafune A, Taniai E, Morita R, Akane H, Kimura M, Mitsumori K, Shibutani M. Immunohistochemical cellular distribution of proteins related to M phase regulation in early proliferative lesions induced by tumor promotion in rat two-stage carcinogenesis models. *Exp Toxicol Pathol* 2014;66:1-11.
- Enoch SJ, Cronin MT. A review of the electrophilic reaction chemistry involved in covalent DNA binding. *Crit Rev Toxicol* 2010;40:728-48.
- Golan DE, Tashjian AH. Principles of pharmacology : the pathophysiologic basis of drug therapy. 3rd Edition. Philadelphia: Wolters Kluwer Health/Lippincott Williams & Wilkins, 2011.
- Williams GM. Mechanisms of chemical carcinogenesis and application to human cancer risk assessment. *Toxicology* 2001;166:3-10.
- Neumann HG. The role of DNA damage in chemical carcinogenesis of aromatic amines. *J Cancer Res Clin Oncol* 1986;112:100-6.
- Hassan AM, Alam SS, Abdel-Aziem SH, Ahmed KA. Benzo-a-pyrene induced genotoxicity and cytotoxicity in germ cells of mice: Intervention of radish and cress. *J Genet Eng Biotechnol* 2011;9:65-72.
- Wang X, Lin Y. Tumor necrosis factor and cancer, buddies or foes? *Acta Pharmacol Sin* 2008;29:1275-88.
- Chen T. The role of MicroRNA in chemical carcinogenesis. *J Environ Sci Health C Environ Carcinog Ecotoxicol Rev* 2010;28:89-124.
- Pelkonen O, Raunio H. Metabolic activation of toxins: tissue-specific expression and metabolism in target organs. *Environ Health Perspect* 1997;105 Suppl 4:767-74.
- Gonzales AJ, Christensen JG, Preston RJ, Goldsworthy TL, Tlsty TD, Fox TR. Attenuation of G1 checkpoint function by the non-genotoxic carcinogen phenobarbital. *Carcinogenesis* 1998;19:1173-83.
- Luch A. Nature and nurture - lessons from chemical carcinogenesis. *Nat Rev Cancer* 2005;5:113-25.
- Walker NJ, Tritscher AM, Sills RC, Lucier GW, Portier CJ. Hepatocarcinogenesis in female Sprague-Dawley rats following discontinuous treatment with 2,3,7,8-tetrachlorodibenzo-p-dioxin. *Toxicol Sci* 2000;54:330-7.
- Yang H, Bocchetta M, Kroczyńska B, Elmishad AG, Chen Y, Liu Z, Bubici C, Mossman BT, Pass HI, Testa JR, Franzoso G, Carbone M. TNF-alpha inhibits asbestos-induced cytotoxicity via a NF-kappaB-dependent pathway, a possible mechanism for asbestos-induced oncogenesis. *Proc Natl Acad Sci U S A* 2006;103:10397-402.
- Trosko JE. The role of stem cells and gap junctional intercellular communication in carcinogenesis. *J Biochem Mol Biol* 2003;36:43-8.
- Short BG, Steinhagen WH, Swenberg JA. Promoting effects of unleaded gasoline and 2,2,4-trimethylpentane on the development of atypical cell foci and renal tubular cell tumors in rats exposed to N-ethyl-N-hydroxyethylnitrosamine. *Cancer Res* 1989;49:6369-78.
- Pitot HC, Dragan YP. Facts and theories concerning the mechanisms of carcinogenesis. *FASEB J* 1991;5:2280-6.
- Irigaray P, Belpomme D. Basic properties and molecular mechanisms of exogenous chemical carcinogens. *Carcinogenesis* 2010;31:135-48.

30. Bartsch H, Margison GP, Malaveille C, Camus AM, Brun G, Margison JM, Kolar GF, Wiessler M. Some aspects of metabolic activation of chemical carcinogens in relation to their organ specificity. *Arch Toxicol* 1977;39:51-63.
31. Hirose M, Shirai T, Takahashi S, Ogawa K, Ito N. Organ-Specific Modification of Carcinogenesis by Antioxidants in Rats. In: Bronzetti G, Hayatsu H, Flora SD, Waters MD, Shankel DM, Associates CW&, editors. *Antimutagenesis and Anticarcinogenesis Mechanisms III*. New York: Springer US, 1993:181-8.
32. Flora SD, Izzotti A, Bennicelli C. Mechanisms of Antimutagenesis and Anticarcinogenesis: Role in Primary Prevention. In: Bronzetti G, Hayatsu H, Flora SD, Waters MD, Shankel DM, Associates CW&, editors. *Antimutagenesis and Anticarcinogenesis Mechanisms III*. New York: Springer US, 1993:1-16.
33. Gold LS, Slone TH, Manley NB, Bernstein L. Target organs in chronic bioassays of 533 chemical carcinogens. *Environ Health Perspect* 1991;93:233-46.
34. Kawajiri K, Fujii-Kuriyama Y. P450 and human cancer. *Jpn J Cancer Res* 1991;82:1325-35.
35. Chakraborty T, Chatterjee A, Rana A, Dhachinamoorthi D, Kumar P A, Chatterjee M. Carcinogen-induced early molecular events and its implication in the initiation of chemical hepatocarcinogenesis in rats: chemopreventive role of vanadium on this process. *Biochim Biophys Acta* 2007;1772:48-59.
36. Pfeifer GP, Denissenko MF, Olivier M, Tretyakova N, Hecht SS, Hainaut P. Tobacco smoke carcinogens, DNA damage and p53 mutations in smoking-associated cancers. *Oncogene* 2002;21:7435-51.
37. Yamazaki H, Kamataki T. P450 and carcinogenesis. *Nihon Yakurigaku Zasshi* 2002;119:208-12.
38. Papaioannou MD, Koufaris C, Gooderham NJ. The cooked meat-derived mammary carcinogen 2-amino-1-methyl-6-phenylimidazo[4,5-b]pyridine (PhIP) elicits estrogenic-like microRNA responses in breast cancer cells. *Toxicol Lett* 2014;229:9-16.
39. Hanajiri K, Mitsui H, Maruyama T, Hashimoto N, Sata M, Omata M. Echographic detection of diethylnitrosamine-induced liver tumors in rats and the effect of the intratumoral injection of an inhibitor of c-Jun N-terminal kinase. *J Gastroenterol Hepatol* 2009;24:866-71.
40. Du YP, Peng JS, Sun A, Tang ZH, Ling WH, Zhu HL. Assessment of the effect of betaine on p16 and c-myc DNA methylation and mRNA expression in a chemical induced rat liver cancer model. *BMC Cancer* 2009;9:261.
41. Liu D, Zhi L, Ma M, Qiao D, Wang M, Wang Y, Jin B, Li A, Liu G, Zhang Y, Song Y, Zhang H. Primarily screening and analyzing ESTs differentially expressed in rats' primary liver cancer. *Chin J Cancer Res* 2013;25:71-8.
42. Gauttier V, Pichard V, Aubert D, Kaepffel C, Schmidt M, Ferry N, Conchon S. No tumour-initiating risk associated with scAAV transduction in newborn rat liver. *Gene Ther* 2013;20:779-84.
43. Kim TM, Lee HS, Shim TJ, Kim HY, Woo KS, Jeong HS, Kim DJ. Preventive effect of thiocresone on the hepatocarcinogenesis initiated by N-nitrosodiethylamine in rats. *Food Sci Biotechnol* 2012;21:1277-84.
44. Moreno FS, Toledo LP, de Conti A, Heidor R, Jordão A Jr, Vannucchi H, Cardozo MT, Ong TP. Lutein presents suppressing but not blocking chemopreventive activity during diethylnitrosamine-induced hepatocarcinogenesis and this involves inhibition of DNA damage. *Chem Biol Interact* 2007;168:221-8.
45. Cardani R, Zavanella T. Decreased density of beta1-adrenergic receptors in preneoplastic and neoplastic liver lesions of F344 rats. *Histol Histopathol* 2005;20:843-50.
46. Hayashi H, Shimamoto K, Taniai E, Ishii Y, Morita R, Suzuki K, Shibutani M, Mitsumori K. Liver tumor promoting effect of omeprazole in rats and its possible mechanism of action. *J Toxicol Sci* 2012;37:491-501.
47. Tarocchi M, Hannivoort R, Hoshida Y, Lee UE, Vetter D, Narla G, Villanueva A, Oren M, Llovet JM, Friedman SL. Carcinogen-induced hepatic tumors in KLF6+/- mice recapitulate aggressive human hepatocellular carcinoma associated with p53 pathway deregulation. *Hepatology* 2011;54:522-31.
48. Moto M, Okamura M, Muguruma M, Ito T, Jin M, Kashida Y, Mitsumori K. Gene expression analysis on the dicyclanil-induced hepatocellular tumors in mice. *Toxicol Pathol* 2006;34:744-51.
49. Takayama S, Thorgeirsson UP, Adamson RH. Chemical carcinogenesis studies in nonhuman primates. *Proc Jpn Acad Ser B Phys Biol Sci* 2008;84:176-88.
50. Vargas-Olvera CY, Sánchez-González DJ, Solano JD, Aguilar-Alonso FA, Montalvo-Muñoz F, Martínez-Martínez CM, Medina-Campos ON, Ibarra-Rubio ME. Characterization of N-diethylnitrosamine-initiated and ferric nitrilotriacetate-promoted renal cell carcinoma experimental model and effect of a tamarind seed extract against acute nephrotoxicity and carcinogenesis. *Mol Cell Biochem* 2012;369:105-17.
51. Pracheta P, Sharma V, Singh L, Paliwal R, Sharma S, Yadav S, Sharma S. Chemopreventive effect of hydroethanolic extract of *Euphorbia neriifolia* leaves against DENA-

- induced renal carcinogenesis in mice. *Asian Pac J Cancer Prev* 2011;12:677-83.
52. Liu WB, Ao L, Zhou ZY, Cui ZH, Zhou YH, Yuan XY, Xiang YL, Cao J, Liu JY. CpG island hypermethylation of multiple tumor suppressor genes associated with loss of their protein expression during rat lung carcinogenesis induced by 3-methylcholanthrene and diethylnitrosamine. *Biochem Biophys Res Commun* 2010;402:507-14.
 53. Khanduja KL, Gandhi RK, Pathania V, Syal N. Prevention of N-nitrosodiethylamine-induced lung tumorigenesis by ellagic acid and quercetin in mice. *Food Chem Toxicol* 1999;37:313-8.
 54. Bilici M, Cayir K, Tekin SB, Gundogdu C, Albayrak A, Suleyman B, Ozogul B, Erdemci B, Suleyman H. Effect of mirtazapine on MNNG-induced gastric adenocarcinoma in rats. *Asian Pac J Cancer Prev* 2012;13:4897-900.
 55. Tsutsumi M, Matsuda Y, Takada A. Role of ethanol-inducible cytochrome P-450 2E1 in the development of hepatocellular carcinoma by the chemical carcinogen, N-nitrosodimethylamine. *Hepatology* 1993;18:1483-9.
 56. Beebe LE, Kim YE, Amin S, Riggs CW, Kovatch RM, Anderson LM. Comparison of transplacental and neonatal initiation of mouse lung and liver tumors by N-nitrosodimethylamine (NDMA) and 4-(methylnitrosamino)-1-(3-pyridyl)-1-butanone (NNK) and promotability by a polychlorinated biphenyls mixture (Aroclor 1254). *Carcinogenesis* 1993;14:1545-8.
 57. Ribeiro Pinto LF, Swann PF. Opium and oesophageal cancer: effect of morphine and opium on the metabolism of N-nitrosodimethylamine and N-nitrosodiethylamine in the rat. *Carcinogenesis* 1997;18:365-9.
 58. Kreisel D, Gelman AE, Higashikubo R, Lin X, Vikis HG, White JM, Toth KA, Deshpande C, Carreno BM, You M, Taffner SM, Yokoyama WM, Bui JD, Schreiber RD, Krupnick AS. Strain-specific variation in murine natural killer gene complex contributes to differences in immunosurveillance for urethane-induced lung cancer. *Cancer Res* 2012;72:4311-7.
 59. Pommergaard HC, Burcharth J, Rosenberg J, Raskov H. Chemoprevention with acetylsalicylic acid, vitamin D and calcium reduces risk of carcinogen-induced lung tumors. *Anticancer Res* 2013;33:4767-70.
 60. Gordon W, Galitovskiy V, Edwards R, Andersen B, Grando SA. The tobacco carcinogen nitrosamine induces a differential gene expression response in tumour susceptible A/J and resistant C3H mouse lungs. *Eur J Cancer* 2013;49:725-33.
 61. Chen RJ, Siao SH, Hsu CH, Chang CY, Chang LW, Wu CH, Lin P, Wang YJ. TCDD promotes lung tumors via attenuation of apoptosis through activation of the Akt and ERK1/2 signaling pathways. *PLoS One* 2014;9:e99586.
 62. Li L, Xie Y, El-Sayed WM, Szakacs JG, Franklin MR, Roberts JC. Chemopreventive activity of selenocysteine prodrugs against tobacco-derived nitrosamine (NNK) induced lung tumors in the A/J mouse. *J Biochem Mol Toxicol* 2005;19:396-405.
 63. Bhatnagar S, Chaudhary N, Katare DP, Jain SK. A non-surgical method for induction of lung cancer in Wistar rats using a combination of NNK and high dietary fats. *Protoplasma* 2013;250:919-29.
 64. Zhang L, Weddle DL, Thomas PE, Zheng B, Castonguay A, Schuller HM, Miller MS. Low levels of expression of cytochromes P-450 in normal and cancerous fetal pancreatic tissues of hamsters treated with NNK and/or ethanol. *Toxicol Sci* 2000;56:313-23.
 65. Parada B, Reis F, Pinto A, Sereno J, Xavier-Cunha M, Neto P, Rocha-Pereira P, Mota A, Figueiredo A, Teixeira F. Chemopreventive Efficacy of Atorvastatin against Nitrosamine-Induced Rat Bladder Cancer: Antioxidant, Anti-Proliferative and Anti-Inflammatory Properties. *Int J Mol Sci* 2012;13:8482-99.
 66. Kim WJ, Lee JW, Quan C, Youn HJ, Kim HM, Bae SC. Nicotinamide inhibits growth of carcinogen induced mouse bladder tumor and human bladder tumor xenograft through up-regulation of RUNX3 and p300. *J Urol* 2011;185:2366-75.
 67. Lu Y, Liu P, Wen W, Grubbs CJ, Townsend RR, Malone JP, Lubet RA, You M. Cross-species comparison of orthologous gene expression in human bladder cancer and carcinogen-induced rodent models. *Am J Transl Res* 2010;3:8-27.
 68. He Z, Kosinska W, Zhao ZL, Wu XR, Guttenplan JB. Tissue-specific mutagenesis by N-butyl-N-(4-hydroxybutyl)nitrosamine as the basis for urothelial carcinogenesis. *Mutat Res* 2012;742:92-5.
 69. Pommergaard HC, Burcharth J, Rosenberg J, Raskov H. Oral chemoprevention with acetyl salicylic Acid, vitamin D and calcium reduces the risk of tobacco carcinogen-induced bladder tumors in mice. *Cancer Invest* 2013;31:490-3.
 70. Sagara Y, Miyata Y, Nomata K, Hayashi T, Kanetake H. Green tea polyphenol suppresses tumor invasion and angiogenesis in N-butyl-(4-hydroxybutyl) nitrosamine-induced bladder cancer. *Cancer Epidemiol* 2010;34:350-4.
 71. Lubet RA, Fischer SM, Steele VE, Juliana MM, Desmond R, Grubbs CJ. Rosiglitazone, a PPAR gamma agonist:

- potent promoter of hydroxybutyl(butyl)nitrosamine-induced urinary bladder cancers. *Int J Cancer* 2008;123:2254-9.
72. Prasain JK, Jones K, Moore R, Barnes S, Leahy M, Roderick R, Juliana MM, Grubbs CJ. Effect of cranberry juice concentrate on chemically-induced urinary bladder cancers. *Oncol Rep* 2008;19:1565-70.
 73. Naiki-Ito A, Asamoto M, Hokaiwado N, Takahashi S, Yamashita H, Tsuda H, Ogawa K, Shirai T. Gpx2 is an overexpressed gene in rat breast cancers induced by three different chemical carcinogens. *Cancer Res* 2007;67:11353-8.
 74. Smith LP, Thomas GR. Animal models for the study of squamous cell carcinoma of the upper aerodigestive tract: a historical perspective with review of their utility and limitations. Part A. Chemically-induced de novo cancer, syngeneic animal models of HNSCC, animal models of transplanted xenogeneic human tumors. *Int J Cancer* 2006;118:2111-22.
 75. Wang R, Dashwood WM, Nian H, Löhr CV, Fischer KA, Tsuchiya N, Nakagama H, Ashktorab H, Dashwood RH. NADPH oxidase overexpression in human colon cancers and rat colon tumors induced by 2-amino-1-methyl-6-phenylimidazo[4,5-b]pyridine (PhIP). *Int J Cancer* 2011;128:2581-90.
 76. Tang MX, Ogawa K, Asamoto M, Chewonarin T, Suzuki S, Tanaka T, Shirai T. Effects of nobiletin on PhIP-induced prostate and colon carcinogenesis in F344 rats. *Nutr Cancer* 2011;63:227-33.
 77. Tang D, Kryvenko ON, Wang Y, Trudeau S, Rundle A, Takahashi S, Shirai T, Rybicki BA. 2-Amino-1-methyl-6-phenylimidazo[4,5-b]pyridine (PhIP)-DNA adducts in benign prostate and subsequent risk for prostate cancer. *Int J Cancer* 2013;133:961-71.
 78. Murai T, Mori S, Kang JS, Morimura K, Wanibuchi H, Totsuka Y, Fukushima S. Evidence of a threshold-effect for 2-amino-3,8-dimethylimidazo-[4,5-f]quinoxaline liver carcinogenicity in F344/DuCrj rats. *Toxicol Pathol* 2008;36:472-7.
 79. Mori Y, Koide A, Kobayashi Y, Furukawa F, Hirose M, Nishikawa A. Effects of cigarette smoke and a heterocyclic amine, MeIQx on cytochrome P-450, mutagenic activation of various carcinogens and glucuronidation in rat liver. *Mutagenesis* 2003;18:87-93.
 80. Takeuchi H, Saoo K, Yamakawa K, Matsuda Y, Yokohira M, Zeng Y, Kuno T, Totsuka Y, Takahashi M, Wakabayashi K, Imaida K. Tumorigenesis of 2-amino-3,8-dimethylimidazo[4,5-f]quinoxaline (MeIQx), but not enhancing effects of concomitant high-fat diet, on lung carcinogenesis in female A/J mice. *Oncol Lett* 2010;1:137-142.
 81. Wei M, Wanibuchi H, Nakae D, Tsuda H, Takahashi S, Hirose M, Totsuka Y, Tatematsu M, Fukushima S. Low-dose carcinogenicity of 2-amino-3-methylimidazo[4,5-f]quinoline in rats: Evidence for the existence of no-effect levels and a mechanism involving p21(Cip/WAF1). *Cancer Sci* 2011;102:88-94.
 82. Xu M, Orner GA, Bailey GS, Stoner GD, Horio DT, Dashwood RH. Post-initiation effects of chlorophyllin and indole-3-carbinol in rats given 1,2-dimethylhydrazine or 2-amino-3-methylimidazo. *Carcinogenesis* 2001;22:309-14.
 83. Andreassen A, Møllersen L, Vikse R, Steffensen IL, Mikalsen A, Paulsen JE, Alexander J. One dose of 2-amino-1-methyl-6-phenylimidazo[4,5-b]pyridine (PhIP) or 2-amino-3-methylimidazo[4,5-f]quinoline (IQ) induces tumours in Min/+ mice by truncation mutations or LOH in the Apc gene. *Mutat Res* 2002;517:157-66.
 84. Sehrawat A, Sultana S. Evaluation of possible mechanisms of protective role of Tamarix gallica against DEN initiated and 2-AAF promoted hepatocarcinogenesis in male Wistar rats. *Life Sci* 2006;79:1456-65.
 85. Hoogervorst EM, van Oostrom CT, Beems RB, van Benthem J, van den Berg J, van Kreijl CF, Vos JG, de Vries A, van Steeg H. 2-AAF-induced tumor development in nucleotide excision repair-deficient mice is associated with a defect in global genome repair but not with transcription coupled repair. *DNA Repair (Amst)* 2005;4:3-9.
 86. Ferreira I, Ferreira J, Vollet-Filho JD, Moriyama LT, Bagnato VS, Salvadori DM, Rocha NS. Photodynamic therapy for the treatment of induced mammary tumor in rats. *Lasers Med Sci* 2013;28:571-7.
 87. Bhardwaj V, Ankola DD, Gupta SC, Schneider M, Lehr CM, Ravi Kumar MN. PLGA Nanoparticles Stabilized with Cationic Surfactant: Safety Studies and Application in Oral Delivery of Paclitaxel to Treat Chemical-Induced Breast Cancer in Rat. *Pharmaceutical Research* 2009;26:2495-503.
 88. Samuelson E, Nilsson J, Walentinsson A, Szpirer C, Behboudi A. Absence of Ras mutations in rat DMBA-induced mammary tumors. *Mol Carcinog* 2009;48:150-5.
 89. de Assis S, Wang M, Jin L, Bouker KB, Hilakivi-Clarke LA. Exposure to excess estradiol or leptin during pregnancy increases mammary cancer risk and prevents parity-induced protective genomic changes in rats. *Cancer Prev Res (Phila)* 2013;6:1194-211.
 90. Hakkak R, Al-Dwairi A, Fuchs GJ, Korourian S, Simmen

- FA. Dietary soy protein induces hepatic lipogenic enzyme gene expression while suppressing hepatosteatosis in obese female Zucker rats bearing DMBA-initiated mammary tumors. *Genes Nutr* 2012;7:549-58.
91. Mafuvadze B, Benakanakere I, López Pérez FR, Besch-Williford C, Eilersieck MR, Hyder SM. Apigenin prevents development of medroxyprogesterone acetate-accelerated 7,12-dimethylbenz(a)anthracene-induced mammary tumors in Sprague-Dawley rats. *Cancer Prev Res (Phila)* 2011;4:1316-24.
 92. Murray SA, Yang S, Demicco E, Ying H, Sherr DH, Hafer LJ, Rogers AE, Sonenshein GE, Xiao ZX. Increased expression of MDM2, cyclin D1, and p27Kip1 in carcinogen-induced rat mammary tumors. *J Cell Biochem* 2005;95:875-84.
 93. Siddiqui RA, Harvey KA, Walker C, Altenburg J, Xu Z, Terry C, Camarillo I, Jones-Hall Y, Mariash C. Characterization of synergistic anti-cancer effects of docosahexaenoic acid and curcumin on DMBA-induced mammary tumorigenesis in mice. *BMC Cancer* 2013;13:418.
 94. Wang T, Gavin HM, Arlt VM, Lawrence BP, Fenton SE, Medina D, Vorderstrasse BA. Aryl hydrocarbon receptor activation during pregnancy, and in adult nulliparous mice, delays the subsequent development of DMBA-induced mammary tumors. *Int J Cancer* 2011;128:1509-23.
 95. Mang T, Kost J, Sullivan M, Wilson BC. Autofluorescence and Photofrin-induced fluorescence imaging and spectroscopy in an animal model of oral cancer. *Photodiagnosis Photodyn Ther* 2006;3:168-76.
 96. Anandakumar P, Kamaraj S, Jagan S, Ramakrishnan G, Vinodhkumar R, Devaki T. Stabilization of pulmonary mitochondrial enzyme system by capsaicin during benzo(a)pyrene induced experimental lung cancer. *Biomed Pharmacother* 2008;62:390-4.
 97. Anandakumar P, Kamaraj S, Jagan S, Ramakrishnan G, Vinodhkumar R, Devaki T. Capsaicin modulates pulmonary antioxidant defense system during benzo(a)pyrene-induced lung cancer in Swiss albino mice. *Phytother Res* 2008;22:529-33.
 98. Goyal PK, Verma P, Sharma P, Parmar J, Agarwal A. Evaluation of anti-cancer and anti-oxidative potential of *Syzygium Cumini* against benzo[a]pyrene (BaP) induced gastric carcinogenesis in mice. *Asian Pac J Cancer Prev* 2010;11:753-8.
 99. Diggs DL, Myers JN, Banks LD, Niaz MS, Hood DB, Roberts LJ 2nd, Ramesh A. Influence of dietary fat type on benzo(a)pyrene [B(a)P] biotransformation in a B(a)P-induced mouse model of colon cancer. *J Nutr Biochem* 2013;24:2051-63.
 100. Brown LM, Malkinson AM, Rannels DE, Rannels SR. Compensatory lung growth after partial pneumonectomy enhances lung tumorigenesis induced by 3-methylcholanthrene. *Cancer Res* 1999;59:5089-92.
 101. Malkinson AM, Koski KM, Evans WA, Festing MF. Butylated hydroxytoluene exposure is necessary to induce lung tumors in BALB mice treated with 3-methylcholanthrene. *Cancer Res* 1997;57:2832-4.
 102. Wei M, Hamoud AS, Yamaguchi T, Kakehashi A, Morimura K, Doi K, Kushida M, Kitano M, Wanibuchi H, Fukushima S. Potassium bromate enhances N-ethyl-N-hydroxyethylnitrosamine-induced kidney carcinogenesis only at high doses in Wistar rats: indication of the existence of an enhancement threshold. *Toxicol Pathol* 2009;37:983-91.
 103. Wu CH, Chen HL, Su HJ, Lee CC, Shen KT, Ho WL, Ho SY, Ho YS, Wang YJ. The topical application of 2,3,7,8-tetrachlorodibenzo-p-dioxin lacks skin tumor-promoting potency but induces hepatic injury and tumor necrosis factor-alpha expression in ICR male mice. *Food Chem Toxicol* 2004;42:1217-25.
 104. Knerr S, Schrenk D. Carcinogenicity of 2,3,7,8-tetrachlorodibenzo-p-dioxin in experimental models. *Mol Nutr Food Res* 2006;50:897-907.
 105. Pula B, Malicka I, Pawlowska K, Paslawska U, Cegielski M, Podhorska-Okolow M, Dziegiel P, Wozniowski M. Immunohistochemical characterization of N-methyl-N-nitrosourea-induced mammary tumours of Sprague-Dawley rats. *In Vivo* 2013;27:793-801.
 106. Yuri T, Danbara N, Tsujita-Kyutoku M, Fukunaga K, Takada H, Inoue Y, Hada T, Tsubura A. Dietary docosahexaenoic acid suppresses N-methyl-N-nitrosourea-induced mammary carcinogenesis in rats more effectively than eicosapentaenoic acid. *Nutr Cancer* 2003;45:211-7.
 107. Zysk AM, Chaney EJ, Boppart SA. Refractive index of carcinogen-induced rat mammary tumours. *Phys Med Biol* 2006;51:2165-77.
 108. Faustino-Rocha AI, Silva A, Gabriel J, Teixeira-Guedes CI, Lopes C, Gil da Costa R, Gama A, Ferreira R, Oliveira PA, Ginja M. Ultrasonographic, thermographic and histologic evaluation of MNU-induced mammary tumors in female Sprague-Dawley rats. *Biomed Pharmacother* 2013;67:771-6.
 109. Barathidasan R, Pawaiya RS, Rai RB, Dhama K. Upregulated Myc expression in N-methyl nitrosourea (MNU)- induced rat mammary tumours. *Asian Pac J Cancer Prev* 2013;14:4883-9.
 110. Pazos P, Lanari C, Meiss R, Charreau EH, Pasqualini CD. Mammary carcinogenesis induced by N-methyl-

- N-nitrosourea (MNU) and medroxyprogesterone acetate (MPA) in BALB/c mice. *Breast Cancer Res Treat* 1992;20:133-8.
111. Yang J, Shikata N, Mizuoka H, Tsubura A. Colon carcinogenesis in shrews by intrarectal infusion of N-methyl-N-nitrosourea. *Cancer Lett* 1996;110:105-12.
 112. Gonçalves BF, de Campos SG, Zanetoni C, Scarano WR, Falleiros LR Jr, Amorim RL, Góes RM, Taboga SR. A new proposed rodent model of chemically induced prostate carcinogenesis: distinct time-course prostate cancer progression in the dorsolateral and ventral lobes. *Prostate* 2013;73:1202-13.
 113. Guru Kumar D, Parvathi V, Meenakshi P, Rathi MA, Gopalakrishnan VK. Anticancer activity of the ethanolic extract of *Crateva nurvala* bark against testosterone and MNU-induced prostate cancer in rats. *Chin J Nat Med* 2012;10:334-8.
 114. Leung WK, Wu KC, Wong CY, Cheng AS, Ching AK, Chan AW, Chong WW, Go MY, Yu J, To KF, Wang X, Chui YL, Fan DM, Sung JJ. Transgenic cyclooxygenase-2 expression and high salt enhanced susceptibility to chemical-induced gastric cancer development in mice. *Carcinogenesis* 2008;29:1648-54.
 115. Johnson NM, Egner PA, Baxter VK, Sporn MB, Wible RS, Sutter TR, Groopman JD, Kensler TW, Roebuck BD. Complete protection against aflatoxin B(1)-induced liver cancer with a triterpenoid: DNA adduct dosimetry, molecular signature, and genotoxicity threshold. *Cancer Prev Res (Phila)* 2014;7:658-65.
 116. Sivanesan D, Begum VH. Modulatory effect of *Gynandropsis gynandra* L. on glucose metabolizing enzymes in aflatoxin B1-induced hepatocellular carcinoma in rats. *Indian J Biochem Biophys* 2007;44:477-80.
 117. Woo LL, Egner PA, Belanger CL, Wattanawaraporn R, Trudel LJ, Croy RG, Groopman JD, Essigmann JM, Wogan GN, Bouhenguel JT. Aflatoxin B1-DNA adduct formation and mutagenicity in livers of neonatal male and female B6C3F1 mice. *Toxicol Sci* 2011;122:38-44.
 118. Liu SP, Li YS, Lee CM, Yen CH, Liao YJ, Huang SF, Chien CH, Chen YM. Higher susceptibility to aflatoxin B(1)-related hepatocellular carcinoma in glycine N-methyltransferase knockout mice. *Int J Cancer* 2011;128:511-23.
 119. Bernstein DM, Rogers RA, Sepulveda R, Donaldson K, Schuler D, Gaering S, Kunzendorf P, Chevalier J, Holm SE. The pathological response and fate in the lung and pleura of chrysotile in combination with fine particles compared to amosite asbestos following short-term inhalation exposure: interim results. *Inhal Toxicol* 2010;22:937-62.
 120. Yamaguchi R, Hirano T, Ootsuyama Y, Asami S, Tsurudome Y, Fukada S, Yamato H, Tsuda T, Tanaka I, Kasai H. Increased 8-hydroxyguanine in DNA and its repair activity in hamster and rat lung after intratracheal instillation of crocidolite asbestos. *Jpn J Cancer Res* 1999;90:505-9.
 121. Robinson C, Woo S, Walsh A, Nowak AK, Lake RA. The antioxidants vitamins A and E and selenium do not reduce the incidence of asbestos-induced disease in a mouse model of mesothelioma. *Nutr Cancer* 2012;64:315-22.
 122. Robinson C, Alfonso H, Woo S, Olsen N, Bill Musk AW, Robinson BW, Nowak AK, Lake RA. Effect of NSAIDs and COX-2 inhibitors on the incidence and severity of asbestos-induced malignant mesothelioma: evidence from an animal model and a human cohort. *Lung Cancer* 2014;86:29-34.
 123. Schmeiser HH, Janssen JW, Lyons J, Scherf HR, Pfau W, Buchmann A, Bartram CR, Wiessler M. Aristolochic acid activates ras genes in rat tumors at deoxyadenosine residues. *Cancer Res* 1990;50:5464-9.
 124. Wang Y, Arlt VM, Roufosse CA, McKim KL, Myers MB, Phillips DH, Parsons BL. ACB-PCR measurement of H-ras codon 61 CAA→CTA mutation provides an early indication of aristolochic acid I carcinogenic effect in tumor target tissues. *Environ Mol Mutagen* 2012;53:495-504.
 125. Okazaki Y, Nagai H, Chew SH, Li J, Funahashi S, Tsujimura T, Toyokuni S. CD146 and insulin-like growth factor 2 mRNA-binding protein 3 predict prognosis of asbestos-induced rat mesothelioma. *Cancer Sci* 2013;104:989-95.
 126. Hamiza OO, Rehman MU, Tahir M, Khan R, Khan AQ, Lateef A, Ali F, Sultana S. Amelioration of 1,2-Dimethylhydrazine (DMH) induced colon oxidative stress, inflammation and tumor promotion response by tannic acid in Wistar rats. *Asian Pac J Cancer Prev* 2012;13:4393-402.
 127. Terai K, Sakamoto K, Goto M, Matsuda M, Kasamaki S, Shinmura K, Takita N, Kamano T. Greater development of 1,2-dimethylhydrazine-induced colon cancer in a rat model of type 2 diabetes mellitus. *J Int Med Res* 2006;34:385-9.
 128. Mennuni C, Ugel S, Mori F, Cipriani B, Iezzi M, Pannellini T, Lazzaro D, Ciliberto G, La Monica N, Zanovello P, Bronte V, Scarselli E. Preventive vaccination with telomerase controls tumor growth in genetically engineered and carcinogen-induced mouse models of

- cancer. *Cancer Res* 2008;68:9865-74.
129. Sánchez Negrette M, Montenegro MA, Catuogno MS, Lértora WJ. Decrease of intestinal tumors induced by 1,2-dimethylhydrazine in rats fed with cow milk and buffalo milk. *Biocell* 2007;31:391-6.
 130. Hernández-Salazar M, Guevara-González RG, Cruz-Hernández A, Guevara-Olvera L, Bello-Pérez LA, Castaño-Tostado E, Loarca-Piña G. Flaxseed (*Linum usitatissimum* L.) and its total non-digestible fraction influence the expression of genes involved in azoxymethane-induced colon cancer in rats. *Plant Foods Hum Nutr* 2013;68:259-67.
 131. Pandurangan AK, Ananda Sadagopan SK, Dharmalingam P, Ganapasam S. Luteolin, a bioflavonoid inhibits Azoxymethane-induced colorectal cancer through activation of Nrf2 signaling. *Toxicol Mech Methods* 2014;24:13-20.
 132. Pratesi G, Manzotti C, Damia G, D'Incalci M. Response of chemically induced primary colon tumours of the mouse to flavone acetic acid (NSC 347 512). *Br J Cancer* 1988;58:144-6.
 133. Kanojia D, Vaidya MM. 4-nitroquinoline-1-oxide induced experimental oral carcinogenesis. *Oral Oncol* 2006;42:655-67.
 134. Liu YC, Ho HC, Lee MR, Lai KC, Yeh CM, Lin YM, Ho TY, Hsiang CY, Chung JG. Early induction of cytokines/cytokine receptors and Cox2, and activation of NF- κ B in 4-nitroquinoline 1-oxide-induced murine oral cancer model. *Toxicol Appl Pharmacol* 2012;262:107-16.
 135. Bulnes S, Argandoña EG, Bengoetxea H, Leis O, Ortuzar N, Lafuente JV. The role of eNOS in vascular permeability in ENU-induced gliomas. *Acta Neurochir Suppl* 2010;106:277-82.
 136. Zook BC, Simmens SJ, Jones RV. Evaluation of ENU-induced gliomas in rats: nomenclature, immunohistochemistry, and malignancy. *Toxicol Pathol* 2000;28:193-201.
 137. Karabinis ME, Larson D, Barlow C, Wynshaw-Boris A, Moser AR. Heterozygosity for a mutation in Brca1 or Atm does not increase susceptibility to ENU-induced mammary tumors in Apc(Min)/+ mice. *Carcinogenesis* 2001;22:343-6.
 138. Morrison JP, Satoh H, Foley J, Horton JL, Dunnick JK, Kissling GE, Malarkey DE. N-ethyl-N-nitrosourea (ENU)-induced meningiomas and meningioma in p16(INK4a)/p19(ARF) tumor suppressor gene-deficient mice. *Toxicol Pathol* 2007;35:780-7.
 139. Tsujiuchi T, Nakae D, Konishi Y. Multi-step lung carcinogenesis model induced by oral administration of N-nitrosobis(2-hydroxypropyl)amine in rats. *Exp Toxicol Pathol* 2014;66:81-8.
 140. Ushijima T, Tsutsumi M, Sakai R, Ishizaka Y, Takaku F, Konishi Y, Takahashi M, Sugimura T, Nagao M. Ki-ras activation in pancreatic carcinomas of Syrian hamsters induced by N-nitrosobis(2-hydroxypropyl)amine. *Jpn J Cancer Res* 1991;82:965-8.
 141. Matsuzaki M, Natori T, Mizumoto K, Kitazawa S, Tsutsumi M, Konishi Y. Intracellular distribution of pancreatic tumor antigen purified from BHP-induced adenocarcinomas in Syrian hamsters. *Pancreas* 1989;4:429-35.
 142. Tsujiuchi T, Sasaki Y, Tsutsumi M, Konishi Y. Mutations of the Smad2 and Smad4 genes in lung adenocarcinomas induced by N-nitrosobis(2-hydroxypropyl)amine in rats. *Mol Carcinog* 2000;29:87-91.
 143. Santarelli RL, Pierre F, Corpet DE. Processed meat and colorectal cancer: a review of epidemiologic and experimental evidence. *Nutr Cancer* 2008;60:131-44.
 144. Larsson SC, Wolk A. Red and processed meat consumption and risk of pancreatic cancer: meta-analysis of prospective studies. *Br J Cancer* 2012;106:603-7.
 145. Andrea I. Schäfer, William Mitch, Sophie Walewijk, Albert Munoz, Emma Teuten, Martin Reinhard. Chapter 7 Micropollutants in Water Recycling: A Case Study of N-Nitrosodimethylamine (NDMA) Exposure from Water versus Food. Available online: <http://www.sciencedirect.com/science/article/pii/S1871271109002074>
 146. Mitch WA, Sharp JO, Trussell RR, Valentine RL, Alvarez-Cohen L, Sedlak DL. N-Nitrosodimethylamine as a drinking water contaminant: A review 2003 *Environmental Engineering Science* 2003;20:389-404.
 147. Hecht SS. Tobacco smoke carcinogens and lung cancer. *J Natl Cancer Inst* 1999;91:1194-210.
 148. Ni Y, Marchal G, Yu J, Mühler A, Lukito G, Baert AL. Prolonged positive contrast enhancement with Gd-EOB-DTPA in experimental liver tumors: potential value in tissue characterization. *J Magn Reson Imaging* 1994;4:355-63.
 149. Yang FC, Zheng SS, Jiang TA. A modified rat model for hepatocellular carcinoma. *Hepatobiliary Pancreat Dis Int* 2004;3:585-7.
 150. Song Y, Jin SJ, Cui LH, Ji XJ, Yang FG. Immunomodulatory effect of *Stichopus japonicus* acid mucopolysaccharide on experimental hepatocellular carcinoma in rats. *Molecules* 2013;18:7179-93.
 151. Arivazhagan S, Balasenthil S, Nagini S. Garlic and neem leaf extracts enhance hepatic glutathione and glutathione dependent enzymes during N-methyl-N'-nitro-N-nitrosoguanidine (MNNG)-induced gastric carcinogenesis in rats. *Phytother Res* 2000;14:291-3.

152. Kang KW, Ha JR, Kim CW, Kim ND, Kim SG. 2-(Allylthio)pyrazine, a cancer chemopreventive agent, inhibits liver fibrosis induced by dimethylnitrosamine in rats: role of inhibition of transforming growth factor- β 1 expression. *Pharmacol Toxicol* 2001;89:23-9.
153. Franklin MR, Moos PJ, El-Sayed WM, Aboul-Fadl T, Roberts JC. Pre- and post-initiation chemoprevention activity of 2-alkyl/aryl selenazolidine-4(R)-carboxylic acids against tobacco-derived nitrosamine (NNK)-induced lung tumors in the A/J mouse. *Chem Biol Interact* 2007;168:211-20.
154. Abdel-Aziz HO, Takasaki I, Tabuchi Y, Nomoto K, Murai Y, Tsuneyama K, Takano Y. High-density oligonucleotide microarrays and functional network analysis reveal extended lung carcinogenesis pathway maps and multiple interacting genes in NNK [4-(methyl nitrosamino)-1-(3-pyridyl)-1-butanone] induced CD1 mouse lung tumor. *J Cancer Res Clin Oncol* 2007;133:107-15.
155. Chaudhary N, Bhatnagar S, Malik S, Katare DP, Jain SK. Proteomic analysis of differentially expressed proteins in lung cancer in Wistar rats using NNK as an inducer. *Chem Biol Interact* 2013;204:125-34.
156. Kitahashi T, Takahashi M, Yamada Y, Oghiso Y, Yokohira M, Imaida K, Tsutsumi M, Takasuka N, Sugimura T, Wakabayashi K. Occurrence of mutations in the epidermal growth factor receptor gene in X-ray-induced rat lung tumors. *Cancer Sci* 2008;99:241-5.
157. Munday R, Mhawech-Fauceglia P, Munday CM, Paonessa JD, Tang L, Munday JS, Lister C, Wilson P, Fahey JW, Davis W, Zhang Y. Inhibition of urinary bladder carcinogenesis by broccoli sprouts. *Cancer Res* 2008;68:1593-600.
158. Ward MH, Cross AJ, Divan H, Kulldorff M, Nowell-Kadlubar S, Kadlubar FF, Sinha R. Processed meat intake, CYP2A6 activity and risk of colorectal adenoma. *Carcinogenesis* 2007;28:1210-6.
159. Butler LM, Sinha R, Millikan RC, Martin CF, Newman B, Gammon MD, Ammerman AS, Sandler RS. Heterocyclic amines, meat intake, and association with colon cancer in a population-based study. *Am J Epidemiol* 2003;157:434-45.
160. IARC Working Group on the Evaluation of Carcinogenic Risks to Humans. Some Non-heterocyclic Polycyclic Aromatic Hydrocarbons and Some Related Exposures. 2010. Available online: <http://monographs.iarc.fr/ENG/Monographs/vol92/>
161. European commission. Opinion of the Scientific Committee on Food on the risks to human health of Polycyclic Aromatic Hydrocarbons in food. 2002. Available online: http://ec.europa.eu/food/fs/sc/scf/out153_en.pdf
162. Boström CE, Gerde P, Hanberg A, Jernström B, Johansson C, Kyrklund T, Rannug A, Törnqvist M, Victorin K, Westerholm R. Cancer risk assessment, indicators, and guidelines for polycyclic aromatic hydrocarbons in the ambient air. *Environ Health Perspect* 2002;110 Suppl 3:451-88.
163. Espandiari P, Glauert HP, Lehmler HJ, Lee EY, Srinivasan C, Robertson LW. Polychlorinated biphenyls as initiators in liver carcinogenesis: resistant hepatocyte model. *Toxicol Appl Pharmacol* 2003;186:55-62.
164. Cui R, He J, Wang B, Zhang F, Chen G, Yin S, Shen H. Suppressive effect of Astragalus membranaceus Bunge on chemical hepatocarcinogenesis in rats. *Cancer Chemother Pharmacol* 2003;51:75-80.
165. Jenkins GJ, Parry JM. Restriction site mutation (RSM) analysis of 2-acetylaminofluorene (2-AAF)-induced mouse liver mutations and comparison with the measurement of in vivo micronucleus induction in the bone marrows of (2-AAF)-treated mice. *Teratog Carcinog Mutagen* 2000;20:107-17.
166. Amornphimoltham P, Leelahavanichkul K, Molinolo A, Patel V, Gutkind JS. Inhibition of Mammalian target of rapamycin by rapamycin causes the regression of carcinogen-induced skin tumor lesions. *Clin Cancer Res* 2008;14:8094-101.
167. Sakakibara H, Ohura T, Kido T, Yamanaka N, Tanimura N, Shimoi K, Guruge KS. Organ-specific distribution of 7-chlorinated benz[a]anthracene and regulation of selected cytochrome P450 genes in rats. *J Toxicol Sci* 2013;38:137-43.
168. Polat F, Ozdemir O, Elagoz S. Analysis of Ki-ras Exon 2 Gene Mutations in 3-Methylcholanthrene and Butylated Hydroxytoluene-Induced Rat Lung Tissues. *Turk J Biol* 2008;32:277-82.
169. Kurokawa Y, Maekawa A, Takahashi M, Hayashi Y. Toxicity and carcinogenicity of potassium bromate--a new renal carcinogen. *Environ Health Perspect* 1990;87:309-35.
170. Nebert DW, Roe AL, Dieter MZ, Solis WA, Yang Y, Dalton TP. Role of the aromatic hydrocarbon receptor and [Ah] gene battery in the oxidative stress response, cell cycle control, and apoptosis. *Biochem Pharmacol* 2000;59:65-85.
171. Tsubura A, Lai YC, Miki H, Sasaki T, Uehara N, Yuri T, Yoshizawa K. Review: Animal models of N-Methyl-N-nitrosourea-induced mammary cancer and retinal degeneration with special emphasis on therapeutic trials. *In Vivo* 2011;25:11-22.
172. Perše M, Cerar A, Injac R, Štrukelj B. N -methyl nitrosourea Induced Breast Cancer in Rat, the Histopathology of the Resulting Tumours and its Drawbacks as a Model.

- Pathology & Oncology Research 2009;15:115-21.
173. Mori M, Naito M, Watanabe H, Takeichi N, Dohi K, Ito A. Effects of sex difference, gonadectomy, and estrogen on N-methyl-N-nitrosourea induced rat thyroid tumors. *Cancer Res* 1990;50:7662-7.
 174. Bennett JW, Klich M. Mycotoxins. *Clin Microbiol Rev* 2003;16:497-516.
 175. Smela ME, Currier SS, Bailey EA, Essigmann JM. The chemistry and biology of aflatoxin B(1): from mutational spectrometry to carcinogenesis. *Carcinogenesis* 2001;22:535-45.
 176. Bbosa GS, Kitya D, Odda J, Ogwal-Okeng J. Aflatoxins metabolism, effects on epigenetic mechanisms and their role in carcinogenesis. *Health* 2013;5:14-34.
 177. Arana S, Dagli MLZ, Sabino M, Tabata YA, Rigolino MG, Hernández-Blázquez FJ. Evaluation of the efficacy of hydrated sodium aluminosilicate in the prevention of aflatoxin-induced hepatic cancer in rainbow trout. *Pesqui Vet Bras* 2011;31:751-5.
 178. Okayasu R, Takahashi S, Yamada S, Hei TK, Ullrich RL. Asbestos and DNA double strand breaks. *Cancer Res* 1999;59:298-300.
 179. Dong H, Buard A, Renier A, Lévy F, Saint-Etienne L, Jaurand MC. Role of oxygen derivatives in the cytotoxicity and DNA damage produced by asbestos on rat pleural mesothelial cells in vitro. *Carcinogenesis* 1994;15:1251-5.
 180. Chen CH, Dickman KG, Moriya M, Zavadil J, Sidorenko VS, Edwards KL, Gnatenko DV, Wu L, Turesky RJ, Wu XR, Pu YS, Grollman AP. Aristolochic acid-associated urothelial cancer in Taiwan. *Proc Natl Acad Sci U S A* 2012;109:8241-6.
 181. Vanherweghem JL, Depierreux M, Tielemans C, Abramowicz D, Dratwa M, Jadoul M, Richard C, Vandervelde D, Verbeelen D, Vanhaelen-Fastre R, et al. Rapidly progressive interstitial renal fibrosis in young women: association with slimming regimen including Chinese herbs. *Lancet* 1993;341:387-91.
 182. Arlt VM, Stiborova M, Schmeiser HH. Aristolochic acid as a probable human cancer hazard in herbal remedies: a review. *Mutagenesis* 2002;17:265-77.
 183. Perše M, Cerar A. The dimethylhydrazine induced colorectal tumours in rat - experimental colorectal carcinogenesis. *Radiol Oncol* 2005;39:61-70.
 184. Wong PN, Wilson DF. 4 Nitroquinoline 1-oxide-induced carcinogenesis in the rat palate. *J Oral Pathol* 1983;12:375-84.
 185. Mei N, Heflich RH, Moore MM, Chen T. Age-dependent sensitivity of Big Blue transgenic mice to the mutagenicity of N-ethyl-N-nitrosourea (ENU) in liver. *Mutat Res* 2005;572:14-26.
 186. Iatropoulos MJ, Wang CX, von Keutz E, Williams GM. Assessment of chronic toxicity and carcinogenicity in an accelerated cancer bioassay in rats of Nifurtimox, an antitrypanosomiasis drug. *Exp Toxicol Pathol* 2006;57:397-404.
 187. Hu Y, Le Leu RK, Belobrajdic D, Young GP. The potential of sphingomyelin as a chemopreventive agent in AOM-induced colon cancer model: wild-type and p53+/- mice. *Mol Nutr Food Res* 2008;52:558-66.
 188. Schwitalla S, Ziegler PK, Horst D, Becker V, Kerle I, Begus-Nahrmann Y, Lechel A, Rudolph KL, Langer R, Slotta-Huspenina J, Bader FG, Prazeres da Costa O, Neurath MF, Meining A, Kirchner T, Greten FR. Loss of p53 in enterocytes generates an inflammatory microenvironment enabling invasion and lymph node metastasis of carcinogen-induced colorectal tumors. *Cancer Cell* 2013;23:93-106.
 189. Gommeaux J, Cano C, Garcia S, Gironella M, Pietri S, Culcasi M, Pébusque MJ, Malissen B, Dusetti N, Iovanna J, Carrier A. Colitis and colitis-associated cancer are exacerbated in mice deficient for tumor protein 53-induced nuclear protein 1. *Mol Cell Biol* 2007;27:2215-28.
 190. Thliveris AT, Clipson L, White A, Waggoner J, Plesh L, Skinner BL, Zahm CD, Sullivan R, Dove WF, Newton MA, Halberg RB. Clonal structure of carcinogen-induced intestinal tumors in mice. *Cancer Prev Res (Phila)* 2011;4:916-23.
 191. Blanco-Aparicio C, Pérez-Gallego L, Pequeño B, Leal JF, Renner O, Carnero A. Mice expressing myrAKT1 in the mammary gland develop carcinogen-induced ER-positive mammary tumors that mimic human breast cancer. *Carcinogenesis* 2007;28:584-94.
 192. Wentz SC, Wu H, Yip-Schneider MT, Hennig M, Klein PJ, Sebolt-Leopold J, Schmidt CM. Targeting MEK is effective chemoprevention of hepatocellular carcinoma in TGF-alpha-transgenic mice. *J Gastrointest Surg* 2008;12:30-7.
 193. Jemal A, Bray F, Center MM, Ferlay J, Ward E, Forman D. Global cancer statistics. *CA Cancer J Clin* 2011;61:69-90.
 194. Ravichandran N, Suresh G, Ramesh B, Manikandan R, Choi YW, Vijaiyan Siva G. Fisetin modulates mitochondrial enzymes and apoptotic signals in benzo(a)pyrene-induced lung cancer. *Mol Cell Biochem* 2014;390:225-34.
 195. González de Mejía E, Ramírez-Mares MV, Arce-Popoca E, Wallig M, Villa-Treviño S. Inhibition of liver carcinogenesis in Wistar rats by consumption of an

- aqueous extract from leaves of *Ardisia compressa*. *Food Chem Toxicol* 2004;42:509-16.
196. Dorai T, Aggarwal BB. Role of chemopreventive agents in cancer therapy. *Cancer Lett* 2004;215:129-40.
 197. Nicastro HL, Grubbs CJ, Margaret Juliana M, Bode AM, Kim MS, Lu Y, You M, Milne GL, Boring D, Steele VE, Lubet RA. Preventive effects of NSAIDs, NO-NSAIDs, and NSAIDs plus difluoromethylornithine in a chemically induced urinary bladder cancer model. *Cancer Prev Res (Phila)* 2014;7:246-54.
 198. Schoop RA, Baatenburg de Jong RJ, Noteborn MH. Apoptin induces apoptosis in an oral cancer mouse model. *Cancer Biol Ther* 2008;7:1368-73.
 199. Ni Y, Marchal G, van Damme B, van Hecke P, Michiels J, Zhang X, Yu J, Baert AL. Magnetic resonance imaging, microangiography, and histology in a rat model of primary liver cancer. *Invest Radiol* 1992;27:689-97.
 200. Lemmer ER, Vessey CJ, Gelderblom WC, Shephard EG, Van Schalkwyk DJ, Van Wijk RA, Marasas WF, Kirsch RE, Hall Pde L. Fumonisin B1-induced hepatocellular and cholangiocellular tumors in male Fischer 344 rats: potentiating effects of 2-acetylaminofluorene on oval cell proliferation and neoplastic development in a discontinued feeding study. *Carcinogenesis* 2004;25:1257-64.
 201. Wang H, Marchal G, Ni Y. Multiparametric MRI biomarkers for measuring vascular disrupting effect on cancer. *World J Radiol* 2011;3:1-16.
 202. Wang H, Van de Putte M, Chen F, De Keyzer F, Jin L, Yu J, Marchal G, de Witte P, Ni Y. Murine liver implantation of radiation-induced fibrosarcoma: characterization with MR imaging, microangiography and histopathology. *Eur Radiol* 2008;18:1422-30.
 203. Wang H, Sun X, Chen F, De Keyzer F, Yu J, Landuyt W, Vandecaveye V, Peeters R, Bosmans H, Hermans R, Marchal G, Ni Y. Treatment of rodent liver tumor with combretastatin a4 phosphate: noninvasive therapeutic evaluation using multiparametric magnetic resonance imaging in correlation with microangiography and histology. *Invest Radiol* 2009;44:44-53.
 204. Wang H, Li J, Chen F, De Keyzer F, Yu J, Feng Y, Nuyts J, Marchal G, Ni Y. Morphological, functional and metabolic imaging biomarkers: assessment of vascular-disrupting effect on rodent liver tumours. *Eur Radiol* 2010;20:2013-26.
 205. Sun X, Wang H, Chen F, De Keyzer F, Yu J, Jiang Y, Feng Y, Li J, Marchal G, Ni Y. Diffusion-weighted MRI of hepatic tumor in rats: comparison between in vivo and postmortem imaging acquisitions. *J Magn Reson Imaging* 2009;29:621-8.
 206. Wang H, Cona MM, Chen F, Yu J, Feng Y, Li J, Keyzer FD, Marchal G, Ni Y. Comparison of two vascular-disrupting agents at a clinically relevant dose in rodent liver tumors with multiparametric magnetic resonance imaging biomarkers. *Anticancer Drugs* 2012;23:12-21.
 207. Ni Y, Huyghe D, Verbeke K, de Witte PA, Nuyts J, Mortelmans L, Chen F, Marchal G, Verbruggen AM, Bormans GM. First preclinical evaluation of mono-[123I]iodohypericin as a necrosis-avid tracer agent. *Eur J Nucl Med Mol Imaging* 2006;33:595-601.
 208. Fonge H, Vunckx K, Wang H, Feng Y, Mortelmans L, Nuyts J, Bormans G, Verbruggen A, Ni Y. Non-invasive detection and quantification of acute myocardial infarction in rabbits using mono-[123I]iodohypericin microSPECT. *Eur Heart J* 2008;29:260-9.
 209. Zwaal RF, Schroit AJ. Pathophysiologic implications of membrane phospholipid asymmetry in blood cells. *Blood* 1997;89:1121-32.
 210. Marconescu A, Thorpe PE. Coincident exposure of phosphatidylethanolamine and anionic phospholipids on the surface of irradiated cells. *Biochim Biophys Acta* 2008;1778:2217-24.
 211. Li J, Sun Z, Zhang J, Shao H, Cona MM, Wang H, Marysael T, Chen F, Prinsen K, Zhou L, Huang D, Nuyts J, Yu J, Meng B, Bormans G, Fang Z, de Witte P, Li Y, Verbruggen A, Wang X, Mortelmans L, Xu K, Marchal G, Ni Y. A dual-targeting anticancer approach: soil and seed principle. *Radiology* 2011;260:799-807.
 212. Li J, Cona MM, Chen F, Feng Y, Zhou L, Yu J, Nuyts J, de Witte P, Zhang J, Himmelreich U, Verbruggen A, Ni Y. Exploring theranostic potentials of radioiodinated hypericin in rodent necrosis models. *Theranostics* 2012;2:1010-9.

Cite this article as: Liu Y, Yin T, Feng Y, Cona MM, Huang G, Liu J, Song S, Jiang Y, Xia Q, Swinnen JV, Bormans G, Himmelreich U, Oyen R, Ni Y. Mammalian models of chemically induced primary malignancies exploitable for imaging-based preclinical theragnostic research. *Quant Imaging Med Surg* 2015;5(5):708-729. doi: 10.3978/j.issn.2223-4292.2015.06.01