

SCIENTIFIC REPORTS



OPEN

A novel single-chain antibody redirects adenovirus to IL13R α 2-expressing brain tumors

Julius W. Kim^{1,†}, Jacob S. Young¹, Elena Solomaha², Deepak Kanojia¹, Maciej S. Lesniak^{1,†} & Irina V. Balyasnikova^{1,†}

Received: 23 July 2015

Accepted: 13 November 2015

Published: 14 December 2015

The generation of a targeting agent that strictly binds to IL13R α 2 will significantly expand the therapeutic potential for the treatment of IL13R α 2-expressing cancers. In order to fulfill this goal, we generated a single-chain antibody (scFv47) from our parental IL13R α 2 monoclonal antibody and tested its binding properties. Furthermore, to demonstrate the potential therapeutic applicability of scFv47, we engineered an adenovirus by incorporating scFv47 as the targeting moiety in the viral fiber and characterized its properties *in vitro* and *in vivo*. The scFv47 binds to human recombinant IL13R α 2, but not to IL13R α 1 with a high affinity of $0.9 \cdot 10^{-9}$ M, similar to that of the parental antibody. Moreover, the scFv47 successfully redirects adenovirus to IL13R α 2 expressing glioma cells both *in vitro* and *in vivo*. Our data validate scFv47 as a highly selective IL13R α 2 targeting agent and justify further development of scFv47-modified oncolytic adenovirus and other therapeutics for the treatment of IL13R α 2-expressing glioma and other malignancies.

Glioblastoma (GBM) is the most common and deadly malignant brain cancer in adults with limited therapeutic options¹. The current therapeutic approaches do not discriminate neoplastic cells from normal cells resulting in undesirable toxicity. In that respect, new targeted approaches for GBM treatment are in urgent need. Specifically with regard to virotherapy for GBM, a lack of specific targeting is usually balanced by conditional replication of oncolytic adenovirus in cancer cells^{2–5}. For example, the conditionally-replicative (CRAd) therapeutic virus (CRAd-S-pk7) has lysine residues added to the fiber knob domain to enhance infectivity, while the viral replication is simultaneously restricted to glioma cells by controlling the replication of the essential early gene (E1) expression under the tumor-specific survivin promoter⁵. This therapeutic agent has demonstrated efficacy in preclinical models^{5,6}. However, the presence of low survivin promoter activity in non-neoplastic cells⁴ and variable activity amongst gliomas^{7,8} dictates the development of additional specific targeting strategies.

Given this need, several research efforts have pursued the development of more specific therapeutic agents for GBM by targeting tumor-specific cell surface proteins^{9–13}. One tumor-specific target is IL13R α 2, an IL13 receptor variant that is selectively expressed on glioma cells^{14–16}. Furthermore, IL13R α 2 expression in glioblastoma has been associated with an increased malignancy grade, the aggressive mesenchymal gene expression signature, and higher IL13R α 2 expression has been correlated with a poorer patient prognosis¹⁷, all of which suggest that treatment approaches that can specifically target IL13R α 2-expressing glioma cells could improve outcomes for patients with a particularly aggressive tumor phenotype. As such, the selective targeting of this glioma-specific protein is a highly promising strategy for oncolytic, cytotoxic, and immunotherapeutic agents that depend on a high level of specificity for efficacy and safety.

The use of IL13 ligand itself is one way to direct therapy to the glioma-specific IL13R α 2. This approach has been used to redirect adenoviral tropism and a mutated form of the IL13 ligand has been used to direct CAR T-cells (e.g. IL13-zetakine T cells)^{10,11} or adenovirus¹⁸ to this tumor specific receptor. However, even the modified IL13 ligand still interacts with the IL13R α 1^{10,11}, another receptor for IL13, which is widely expressed by normal cells, underlining the unmet need for exclusive IL13R α 2 targeting agents.

To address this problem, an IL13R α 2-specific monoclonal antibody (mAb) has been developed and has been shown to bind to the IL13R α 2 with exclusive specificity. This antibody also competes with IL13 for its binding site

¹The Brain Tumor Center, The University of Chicago, Chicago, IL 60637, USA. ²Biophysics Core Facility, The University of Chicago, Chicago, IL 60637, USA. [†]Present address: The Department of Neurosurgery, Feinberg School of Medicine, Northwestern University, Chicago, IL 60611, USA. Correspondence and requests for materials should be addressed to I.V.B. (email: irina.balyasnikova@northwestern.edu)

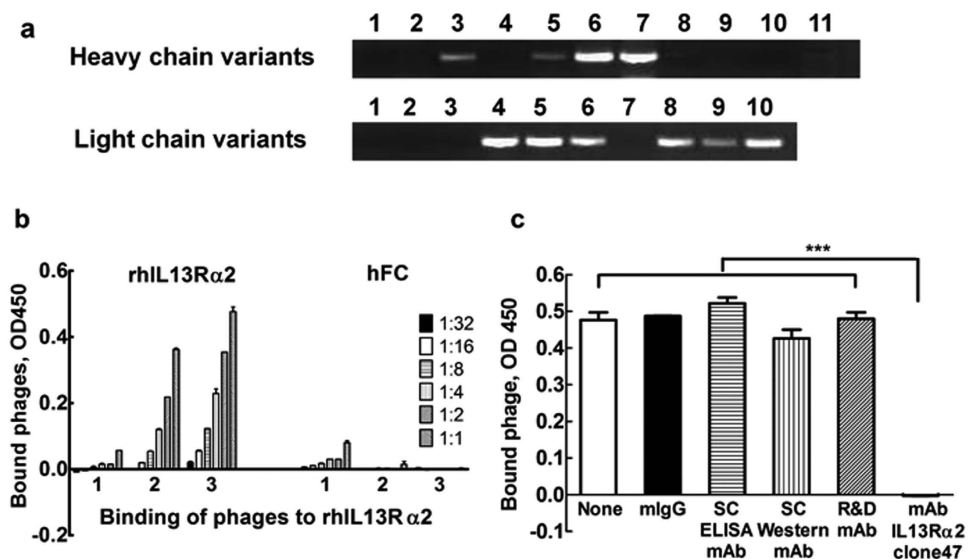


Figure 1. Generation and characterization of scFv47. (a) Screening of parental hybridoma IL13R α 2 cells mRNA for Vh and Vl using set Vh and Vl specific primers (Suppl. Table 1). (b) ELISA testing for phage binding enriched in three rounds of biopanning against rhIL13R α 2 protein and hFc as a negative control. (c) Competitive Assay. Plates coated with rhIL13R α 2 protein were treated with a panel of anti-IL13R α 2 mAbs that recognize non-overlapping epitopes with the parental mAb IL13R α 2 (clone 47)¹⁹. Binding of phages in the absence or presence of antibodies was analyzed via detection with anti-M13 phage antibody as described in the Material and Methods section. Each data point is an average of 3 independent replicates in all figures. Data presented as mean \pm SEM. *** $p < 0.001$.

on IL13R α 2 and has been shown to improve survival in mice with an intracranial model of glioblastoma¹⁹, as well as mice with colorectal cancer²⁰. However, the therapeutic applicability of the whole mAb is limited by its rather large size, making it difficult to incorporate into other therapeutic reagents, as well as by its murine origin, which renders it capable of generating undesirable immune responses. For this reason, we engineered a single-chain variable antibody fragment (scFv47) derived from our well characterized IL13R α 2-specific monoclonal antibody¹⁹.

In the study, we demonstrate that our novel scFv47 possesses exclusive specificity of binding to IL13R α 2 and recognizes the same epitope as the parental monoclonal antibody with a high affinity. Furthermore, as a proof of principle to show its potential therapeutic applicability, we generated a novel IL13R α 2-targeted adenoviral vector by incorporating this scFv47 into the fiber knob domain of a fiber-fibrin modified adenovirus^{21–23}. We demonstrate that this fiber modification successfully redirects the viral tropism specifically to IL13R α 2-expressing glioma cells *in vitro* and *in vivo*. Our data validate that scFv47 represents a valuable reagent necessary for development of personalized therapeutics that are tailored specifically to a patient's tumor phenotype.

Results

Cloning and characterization scFv fragment of mAb47.

We previously reported that our new mAb IL13R α 2 (clone 47) possess unique properties, such as a strong binding with the native epitope of IL13R α 2, high affinity of interaction with IL13R α 2, and the ability to compete with IL13 for its recognition site on IL13R α 2¹⁹. Here, we report the engineering of scFv47 from the hybridoma cell line secreting parental antibody. The analysis of mRNA from this hybridoma cell line revealed the presence of multiple transcripts corresponding to the heavy and light chains of mAb (Fig. 1a)^{24,25}. In order to obtain a functional combination of heavy chain and light chain variable regions assembled in the scFv47, we utilized a phage–display approach^{24,25}. For that reason, the library of phages for the heavy and light chain variants in a scFv format was generated and screened against recombinant human IL13R α 2 (rhIL13R α 2) as described below.

After generating scFv47, we verified its binding specificity to rhIL13R α 2. To this end, supernatant containing phages during all rounds of bio-panning were generated and assayed for binding specificity to rhIL13R α 2 protein by ELISA. Figure 1b shows that the specificity phage interaction dramatically increases with each subsequent round of biopanning, whereas non-specific binding to the negative control, human IgG decreases to an undetectable level. After the last round of biopanning, individual phage clones were generated. Sequence analysis of XL1 blue *E. coli* infected with individual phage clones revealed that all selected phages contained an identical sequence of the scFv47. Thus, these data indicate that scFv47 was successfully generated through three rounds of phage biopanning.

Next, we performed a competitive assay to determine if the newly cloned scFv47 and the parental mAbIL13R α 2 (clone 47) bind to the same epitope on the IL13R α 2 molecule. Figure 1c shows that mAb IL13R α 2 (clone 47) completely prevented the interaction of scFv47 expressing phages to immobilized rhIL13R α 2 protein. Neither the control mIgG nor three other mAbs against IL13R α 2, which recognize non-overlapping epitopes of the mAb IL13R α 2(clone 47) on human IL13R α 2¹⁹, interfered with the binding of scFv47 to IL13R α 2. This result clearly demonstrates that scFv47 shares the same recognition site on IL13R α 2 as parental monoclonal antibody.

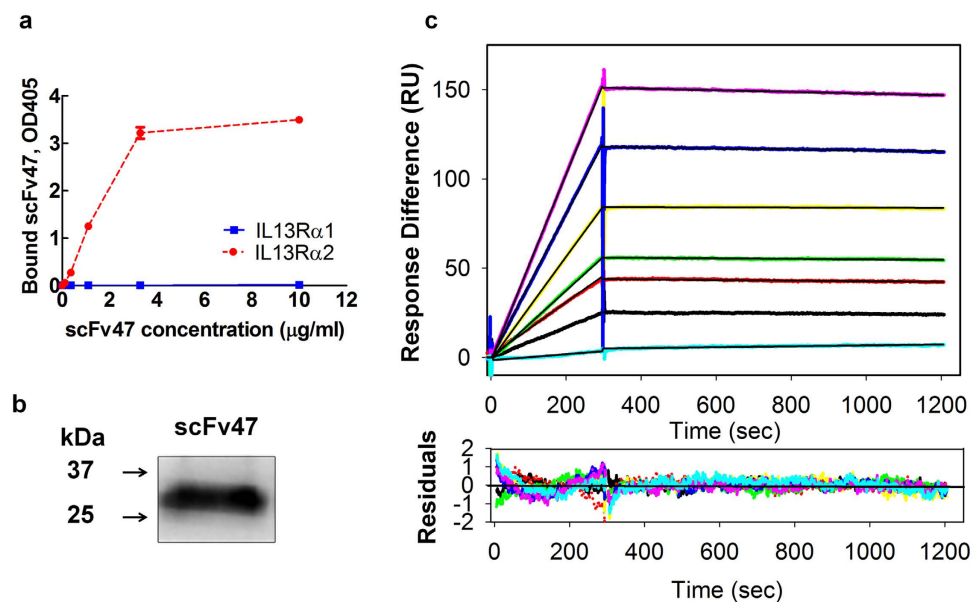


Figure 2. Binding characteristics of scFv47 to IL13R α 2. (a) Binding of purified soluble scFv47 with rhIL13R α 1 and rhIL13R α 2 proteins was determined in plate ELISA. (b) Western blot analysis of soluble scFv47. The scFv47 protein runs under reducing conditions as a 30kDa protein in agreement with the predicted molecular weight. (c) The kinetics of interactions between the scFv47 and rhIL13R α 2 were visualized by SPR in a Biacore 3000. The scFv47 was injected at concentrations ranging from 1 to 50 nM (lower to upper curves) at a constant flow rate of 20 μ L/min over immobilized rhIL13R α 2. The association phase was monitored for 30 sec, dissociation phase for 900 sec following by the change in SPR signal (colored curves), given in RU. Black curves represent the fit of the data to a one-site binding model. For derived kinetic parameters, see Table 1. Lower panels show residuals from the one-site binding model, indicating an excellent fit.

	k_a (1/Ms)	k_d (1/s)	K_D (M)	R_{max} (RU)
scFv47	$3.08e3 \pm 16$	$2.63e-6 \pm 1.8e-8$	$0.9 \cdot 10^{-9}$	496

Table 1. Kinetics of scFv47 binding to the human recombinant IL13R α 2. The estimation of kinetic parameters was performed as described in the 'Materials and Methods'. The dissociation constant (K_D) of the complexes was determined as the ratio k_d/k_a . For quantitative analysis, 3 independent replicates were performed for each sample. Data are expressed as mean \pm SEM. These data demonstrate that the affinity of scFv47 to rhIL13R α 2 is similar to parental mAb IL13R α 2 (clone 47) ($1.39 \cdot 10^{-9}$) as we have previously reported¹⁹.

The specificity of binding of soluble scFv47 to IL13R α 2 was further validated. For that, soluble scFv47 was generated in XL1 blue *E. Coli* and purified as described in the Materials and Methods. An analysis of the binding of soluble scFv47 in plate ELISA demonstrated lack of interaction with rhIL13R α 1 and specific binding with rhIL13R α 2 (Fig. 2a). Figure 2b shows that the molecular weight of soluble scFv47 protein is about 30kDa, which corresponds to its predicted value. Furthermore, the plasmon resonance analysis revealed that soluble scFv47 binds to rhIL13R α 2 with a high affinity ($0.9 \cdot 10^{-9}$ M) similar to that of the parental antibody¹⁹ (Table 1 and Fig. 2c). Thus, the obtained scFv47 was deemed to be fully functional as determined by a specific interaction of scFv47-expressing phages and soluble scFv47 to rhIL13R α 2.

Generation of IL13R α 2 targeted adenoviral vector. In order to redirect the viral tropism to IL13R α 2, we genetically modified both the viral fiber shaft and knob domains^{22,26}. First, the shaft domain was replaced with a fiber-fibrin (FF) trimerization domain to ensure stability of the binding motif structure, and then the scFv47 was incorporated in the C-terminal of the FF shaft domain (Fig. 3a). The purified Ad5scFv47FF-CMV-GFP virus titer was comparable to that of Ad5-CMV-GFP, indicating that scFv47 incorporation does not affect the yield of virus production (Suppl. Fig. 1). To confirm the genetic modification of the fiber, PCR analysis was performed with purified viral DNAs using either fiber-specific or scFv47-specific primer sets. Figure 3b demonstrates the successful incorporation of scFv47 in the FF domain of adenovirus (Ad5FFscFv47). Furthermore, western blot analysis of the wild-type and recombinant virus further confirmed (Fig. 3c) that the new chimeric fiber has a composition similar to that of the wild-type fiber, indicating that incorporation of scFv47 does not hinder the fiber's trimerization or cause structural instability of the fiber.

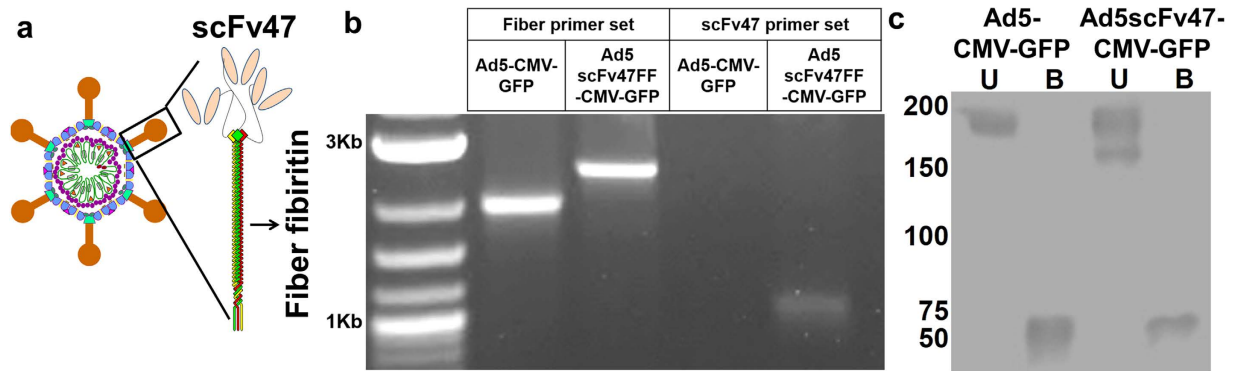


Figure 3. Design, Generation, and Confirmation of IL13R α 2 Tropic Virus Structure and Stability.

(a) Schematic diagram of anti-IL13R α 2 scFv-specific chimera fiber of Ad5FFscFv47-CMV-GFP. The fiber knob and shaft domains of Ad5 were replaced with a fiber fibrin trimerization domain, and anti-IL13R α 2 scFv47 was incorporated into the C-terminus of the chimeric fiber. (b) PCR confirmation of fiber modification. (c) Validation of the chimeric fiber structure. Western blot analysis detected the stable fiber trimerization when the chimeric fiber was unboiled (U: incubated at room temperature for 10 min), and detected denatured monomeric structures when the fiber was boiled (B: incubated at 95 °C for 10 min).

Demonstration of CAR independent infection. The primary receptor for the human adenovirus serotype 5 (Ad5) is the *coxsackie and adenovirus receptor* (CAR)^{27–29}. It is anticipated, therefore, that Ad5FFscFv47 virus will infect cells in CAR-independent fashion. To confirm that our modification results in a loss of CAR-binding ability, the viral infectivity of Ad5FFscFv47 encoding for green fluorescent protein under the control of CMV promoter (Ad5FFscFv47-CMV-GFP) and wild-type virus, Ad5-CMV-GFP, was analyzed in the human CAR (hCAR)-negative and hCAR-positive (CHO-hCAR) Chinese hamster ovary cell lines. Figure 4a demonstrates that wild-type Ad5-CMV-GFP efficiently infects the CHO-hCAR, but not the hCAR-negative CHO cells, whereas Ad5FFscFv47-CMV-GFP shows very little infectivity in either cell line, indicating on loss of CAR-binding ability.

IL13R α 2 specific infection of glioma cells *in vitro*. Next, in order to demonstrate IL13R α 2-specific infectivity by the Ad5FFscFv47-CMV-GFP virus, we used CHO and CHO-IL13R α 2 cell lines¹⁹. As shown in Fig. 4b,c, Ad5FFscFv47-CMV-GFP efficiently infects CHO-IL13R α 2 cells (80% of the IL13R α 2 cells are GFP positive), but not control, IL13R α 2-negative, CHO cells. For further validation of IL-13R α 2-dependent infectivity of Ad5FFscFv47-CMV-GFP, we performed an analysis of viral transduction in U87MG and U25MG cell lines, as well in patient-derived primary GBM43 and GBM39 glioma cells, which endogenously express IL13R α 2 at different levels (Fig. 4d). The flow cytometry analysis revealed that infectivity of Ad5FFscFv47-CMV-GFP strongly correlated with the level of IL13R α 2 expression in the assayed cell lines. GFP expression was observed in about 20% of U87MG and 90% of U251MG glioma cell lines, as well in 1% and 20% of GBM39 and GBM43 glioma cells, respectively (Fig. 4e). In contrast, wild-type Ad5-CMV-GFP infection of both glioma cell lines was observed at a very low level, in accordance with the well-characterized low level of CAR expression by glioma cells^{30,31}. Importantly, the infectivity of Ad5FFscFv47-CMV-GFP in U251MG cells increased proportionally with the viral multiplicity of infection (MOI) used in assay (Fig. 4f), without causing any observable cytotoxicity.

To further validate IL13R α 2-dependent infectivity of Ad5FFscFv47-CMV-GFP, we generated two cell lines, IL13R α 2⁺ U251MG and IL13R α 2.KDU251MG via transduction with lentivirus encoding either control or IL13R α 2-specific shRNA, respectively. IL13R α 2⁺ U251MG cells retained a very high (above 92% positive cells) expression of IL13R α 2 on their cell surface after lentiviral transduction, whereas IL13R α 2.KDU251MG glioma cells were mostly IL13R α 2 negative (about 12% of IL13R α 2-positive cells) (Fig. 5a). Respectively, Ad5FFscFv47-CMV-GFP infected over 90% of IL13R α 2⁺ U251MG and less than 5% of IL13R α 2.KDU251MG cells (Fig. 5b). Moreover, anti-IL13R α 2 mAb effectively inhibited the infection of U251MG cells by Ad5FFscFv47-CMV-GFP (Fig. 5c) in a competitive assay. Collectively, these data demonstrate that, similarly to the scFv47 protein, the Ad5FFscFv47 is an IL13R α 2-specific viral agent.

Infection of stem-like cancer glioma cells by Ad5FFscFv47 virus. As cancer stem cells have emerged as a potential target for glioblastoma treatments, we mimicked cancer stem cell-like properties *in vitro* by culturing the U87MG cells as neurospheres (see the Material and Methods section for details). Analysis of IL13R α 2 expression revealed that U87MG neurospheres had 13 times higher expression of mRNA and 1.7 times higher surface protein expression, respectively, in comparison to cells grown in attached (e.g. differentiated) form (Fig. 6a,b). Accordingly, Ad5FFscFv47-CMV-GFP infectivity was about 1.6 times higher in neurospheres than in adherently growing U87MG cells (Fig. 6c,d). To further validate the ability of Ad5FFscFv47-CMV-GFP to transduce neurospheres derived from the of IL13R α 2-expressing glioma cells, we analyzed patient derived primary glioma cells GBM39 and GBM43. While we observed a slight increase in IL13R α 2 mRNA expression in both GBM39 and GBM43 cell lines cultured as neurospheres, there was no detectable change in the surface expression of IL13R α 2 or the infectivity with Ad5FFscFv47-CMV-GFP in either cell line (Suppl. Fig. 2). The Ad5FFscFv47-CMV-GFP infectivity was well correlated with the level of IL13R α 2 expression on the cell surface in all studied glioma cell lines.

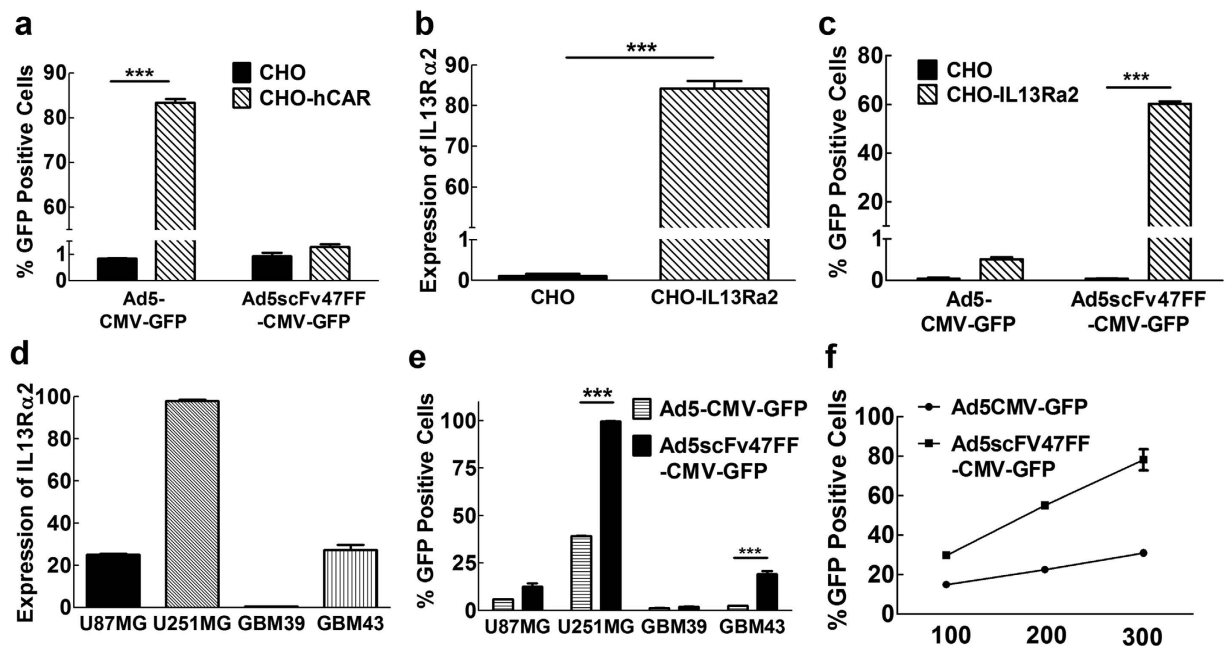


Figure 4. Confirmation of Tropism Modification of Ad5FFscFv47-CMV-GFP. (a) CAR-independent infectivity of Ad5FFscFv47-CMV-GFP virus. CAR-negative CHO and CAR-positive CHO-hCAR cell lines were infected with Ad5CMV-GFP or Ad5FFscFv47-CMV-GFP virus. Cells were analyzed for GFP expression 72 hours post infection by flow cytometry. (b) The expression of IL13R α 2 on the surface of CHO-IL13R α 2 cell line detected using mAb IL13R α 2 (clone 47). (c) IL13R α 2-dependent infectivity of Ad5FFscFv47-CMV-GFP demonstrated by efficient transduction of CHO-IL13R α 2 cells and lack of transduction of IL13R α 2-negative CHO cells. (d) The IL13R α 2 expression on the surface of U87MG, U251MG, GBM39, and GBM43 glioma cell lines. Data presented as percent of positive cells. (e) The transduction efficiency of Ad5FFscFv47-CMV-GFP, but not Ad5CMV-GFP virus, strongly correlates with a level of IL13R α 2 expression in U87MG, U251MG, GBM39, and GBM43 glioma cells. Transduced glioma cells were analyzed by flow cytometry for GFP expression 72 hours post infection. (f) Steady increase in the infectivity of Ad5FFscFv47-CMV-GFP with an increase of MOI. U251MG cells were infected with Ad5FFscFv47-CMV-GFP or Ad5CMV-GFP at MOI: 100, 200, and 300 vp/cell. 72 hours post infection, a flow cytometric analysis for GFP expression in cells was performed. Each data point is an average of 3 independent replicates in all figures. Data presented as mean \pm SEM. *** p < 0.001.

Thus, our data suggest that targeting of IL13R α 2 overexpressing cancer stem cells is highly feasible via utilization of scFv47-targeted therapeutic agents such as scFv47-engineered adenovirus.

Demonstration of IL13R α 2-specific infection *in vivo*. Collectively, the *in vitro* assays demonstrate that Ad5FFscFv47-CMV-GFP specifically infects IL13R α 2-expressing glioma cells. Next, we validated the specificity of Ad5FFscFv47-CMV-GFP *in vivo* using intracranially implanted IL13R α 2⁺ U251MG and IL13R α 2.KDU251MG cells in a xenograft murine model of glioma. No infection was detected in the mostly IL13R α 2-negative IL13R α 2.KDU251MG xenograft tissue or in the brain tissue surrounding the tumor as judged by the lack of GFP transgene expression (Fig. 7a). However, we observed a high infection of IL13R α 2-expressing IL13R α 2⁺ U251MG xenograft; and once again there was no detectable GFP signal in the brain tissue adjacent to the tumor (Fig. 7b). Thus, our data confirmed that Ad5FFscFv47-CMV-GFP is capable of specific transduction of IL13R α 2-expressing tumor cells not only *in vitro* but also *in vivo*.

Discussion

Here, we report a novel scFv47 generated from our parental antibody¹⁹ through a phage–display approach. We show that the scFv47 specifically recognizes native IL13R α 2 with an exclusively high affinity and recognizes the same epitope as a parental mAb IL13R α 2 (clone 47). Furthermore, we show that the scFv47 can be successfully incorporated into an adenoviral vector and that the Ad5FFscFv47-CMV-GFP virus also exclusively infects IL13R α 2-expressing glioma cells *in vitro* and *in vivo*.

A series of immunotherapeutic agents targeting IL13R α 2 have demonstrated preclinical promise^{10,11,32,33}, however these agents also recognize the widespread IL13R α 1, indicating that there is unmet need for specific targeting agents^{10,11,34}. In order to improve the specificity of IL13R α 2 targeting, a monoclonal antibody that exclusively recognizes a native epitope on the IL13R α 2 protein has been previously generated in our laboratory¹⁹. Engineered antibody fragments, however, have an advantage over the whole antibody, because they can be easily genetically manipulated and incorporated in therapeutic agents. With that in mind, we genetically engineered scFv47 as an IL13R α 2-specific targeting moiety for various future therapeutic agents.

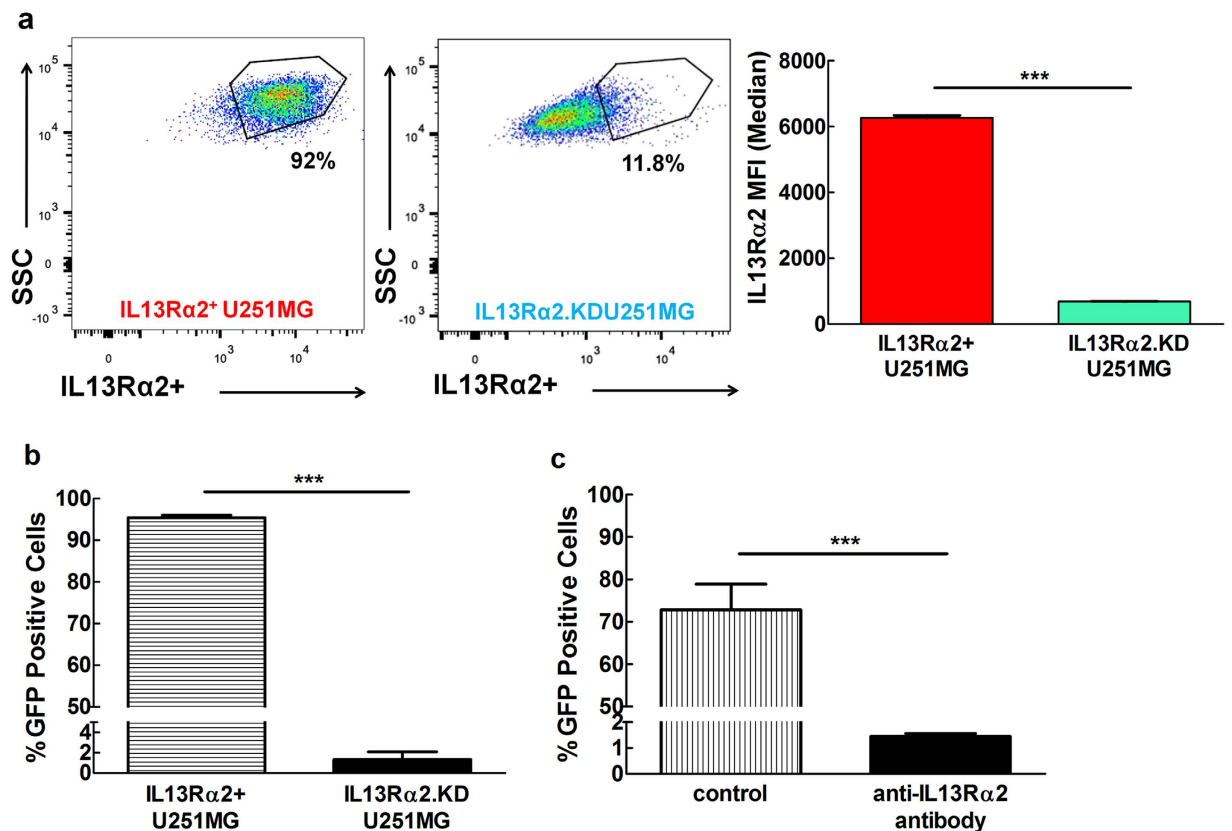


Figure 5. IL13R α 2-specific Infectivity of Ad5FFscFv47-CMV-GFP. (a) Flow cytometry analysis of IL13R α 2 expression in U251MG cells following knockdown with control shRNA (IL13R α 2⁺ U251MG) or IL13R α 2-specific shRNA (IL13R α 2.KDU251MG) presented as percent of positive cells (flow charts) and median fluorescent intensity (MFI). (b) IL13R α 2-dependent infectivity of Ad5FFscFv47-CMV-GFP demonstrated by differential expression of GFP in IL13R α 2⁺ U251MG and IL13R α 2.KDU251MG cell lines. (c) Competitive binding assay. U251MG cells were pre-treated with anti-IL13R α 2 mAb as described in the Material and Methods section. Control and treated cells were then infected with Ad5scFv47-CMV-GFP virus. Cells were analyzed for GFP transgene expression 72 hours later by flow cytometry. Each data point is an average of 3 independent replicates. Mean \pm SEM is plotted. *** p < 0.001.

Here, we present our initial efforts to demonstrate that scFv47 has therapeutic applicability by redirecting tropism of the commonly used anticancer agent, adenovirus, via modification of its fiber. Although the incorporation of scFv into adenoviral fiber is known to be difficult due to the stability of scFv itself and that of fiber trimerization^{21,23}, the scFv47-modified fiber demonstrated stability comparable to that of the wild-type adenoviral fiber, and Ad5FFscFv47-CMV-GFP was no longer able to recognize the native adenoviral receptor, CAR. Instead, the virus exclusively infected IL13R α 2-expressing cells both *in vitro* and *in vivo*. Our results validate scFv47 as a highly selective IL13R α 2 targeting agent and confirm that it can be utilized for the redirection of adenoviral tropism to cancer and cancer stem-like glioma cells. It opens venues for the exploration of scFv47-based viral, cellular, protein, and nanoparticle therapeutics for the treatment of various IL13R α 2-expressing human malignancies.

Recently, research has focused on identifying therapeutic agents that can successfully eradicate cancer stem cells, which are resistant to traditional anticancer therapies and thought to be responsible for cancer recurrence following therapeutic treatment³⁵. Based on these properties, glioma stem cells are a highly attractive subset of tumor cells for therapeutic targeting. In agreement with previous reports^{36,37}, we observed that expression of IL13R α 2 is maintained in primary patient-derived glioma cell growing as neurospheres, which permitted efficient transduction of these cells by Ad5FFscFv47-CMV-GFP virus. IL13R α 2 expression has recently been associated with an increased malignancy grade and a poorer patient prognosis¹⁷. Thus, providing a treatment option that specifically targets IL13R α 2-expressing stem-like and differentiated glioma cells would be of benefit to the patients with some of the most aggressive and hardest to treat cancers.

Previously, it has been shown that nearly 50% of GBM patients have tumors that express IL13R α 2³⁸, a higher percentage than the other commonly used glioma specific marker EGFRvIII³⁹, which indicates significance of this molecular target for the majority of GBM patients³⁸. Additionally, following glioma cell death, the phenomenon of 'epitope spreading' might enhance the immune response against the tumor and result in further removal of the tumor, even those cells that do not express the originally targeted antigen⁴⁰. As more glioma-specific agents are

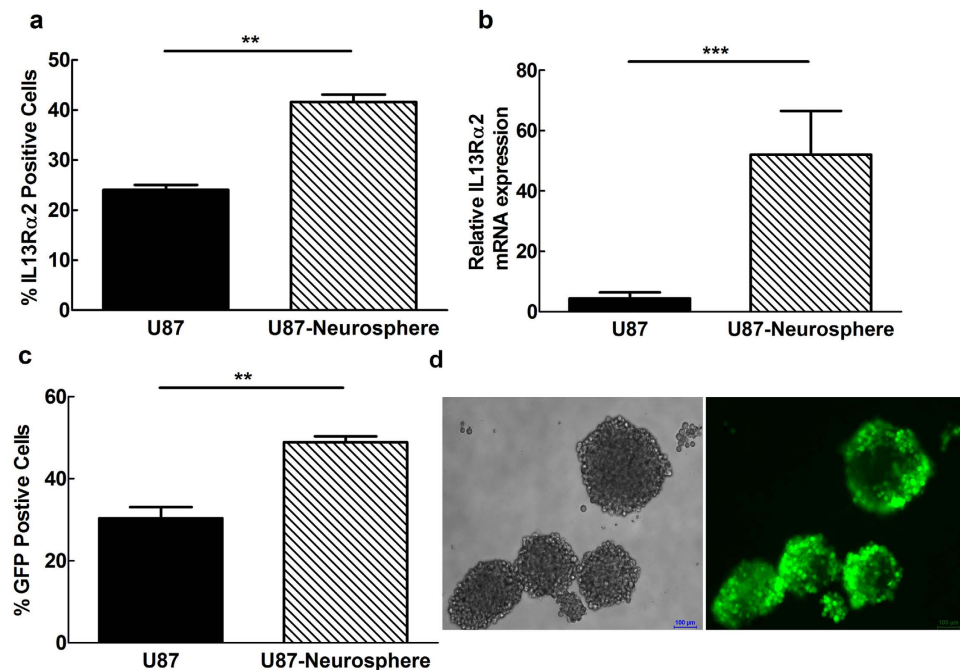


Figure 6. Infection of neurospheres by Ad5FFscFv47-CMV-GFP. (a) Comparison of IL13R α 2 expression in U87MG cells growing as an adherent culture or as neurospheres. (b) Relative IL13R α 2 mRNA expression in U87MG glioma cells grown as adherent culture or as neurospheres was analyzed by RT-PCR. (c) Ad5FFscFv47-CMV-GFP infectivity of U87MG glioma cells grown as adherent culture versus neurospheres was determined by flow cytometry analysis for GFP-positive cells (d) Microscopic image of U87MG neurospheres (phase-contrast image-left panel) infected with Ad5FFscFv47-CMV-GFP. GFP expression (right panel) is shown in green fluorescence. Scale bar is 100 μ m. Each data point is an average of 3 independent replicates. Mean \pm SEM is plotted. *** p < 0.001, ** p < 0.01.

developed, personalized treatment cocktails can be administered in the future to achieve heightened specificity and efficacy for a given patient's glioma phenotype.

In conclusion, we claim that the scFv47 could serve as specific moiety for IL13R α 2-directed therapeutics, such as T and NK immune cells, fusion proteins, nano carriers, viruses, and other agents. As continuation of this study, we propose further development of Ad5FFscFv47 as an oncolytic agent alone or for targeted delivery of gene therapy such as suicide genes like HSV-tk and/or immunotherapy, such as checkpoint blockade with PD-1 or CTLA-4, directly to the tumor microenvironment^{41,42}. This gene delivery and immunotherapy strategy has consistently demonstrated therapeutic efficacy in pre-clinical glioma models, and is currently being explored in human clinical trials.

Finally, the vast molecular heterogeneity of malignant gliomas has likely contributed to the lack of effective targeted therapies. Currently, there are several active and pending clinical trials designed for the personal therapy of patients with glioma. Eventually, with the development of an arsenal of targeted therapies, such as agents that specifically target and destroy IL13R α 2-expressing tumor cells and other tumor associated antigens such as EGFRvIII, personalized treatment protocols can be implemented in conjunction with traditional disease therapies like surgery and radiation to improve the outcome for patients with GBM.

Materials and Methods

Cell lines and reagents. Purified anti-*c-myc* antibody (clone 9E10) was obtained from the Frank W. Fitch Monoclonal Antibody Facility of the University of Chicago. Anti-M13-HRP antibody was obtained from Amersham Pharmacia Biotech (Uppsala, Sweden). Goat anti-mouse alkaline phosphatase conjugate was purchased from Sigma-Aldrich St. Louis, MO. Human embryonic kidney (HEK) 293, HEK 293-F28 stably expressing Ad5 wild type fibers, Chinese hamster ovary (CHO) cells, CHO-hCAR cells stably expressing human CAR, CHO-IL13R α 2¹⁹, U87MG and U251MG glioma cell lines were used. To generate IL13R α 2⁺ U251MG and IL13R α 2-KDU251MG, U251 cells were transduced with lenti viral particles encoding for control or IL13R α 2 shRNA (Sigma-Aldrich, St. Louis, MO). Transduced cells were selected with puromycin at 2 μ g/ml and analyzed by flow cytometry for IL13R α 2 expression using our mAb IL13R α 2 (clone 47)¹⁹. Cells lines were cultured in DMEM media (Mediatech, Inc., Herndon, VA) supplemented with 10% heat inactivated FBS (Hyclone; Logan, UT) and penicillin-streptomycin (Mediatech, Inc., Herndon, VA). For formation of neurospheres, glioma cells were grown in neurobasal media (Life technologies, Eugene, OR) supplemented with EGF and bFGF at concentration of 20 ng/ml as well N10 and B27 supplements (Sigma-Aldrich, St. Louis, MO) for 7 days as described previously⁴³. The

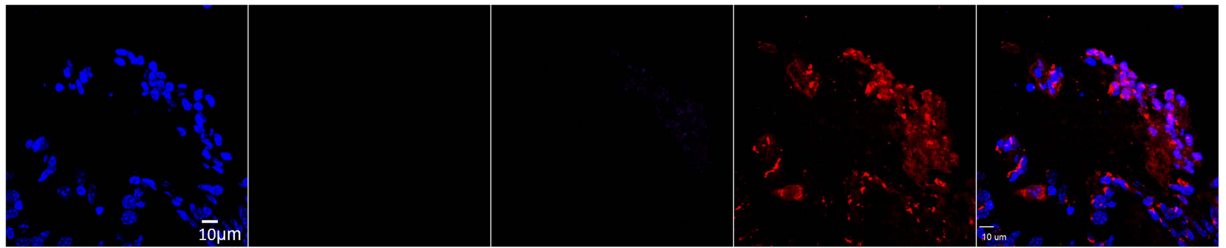
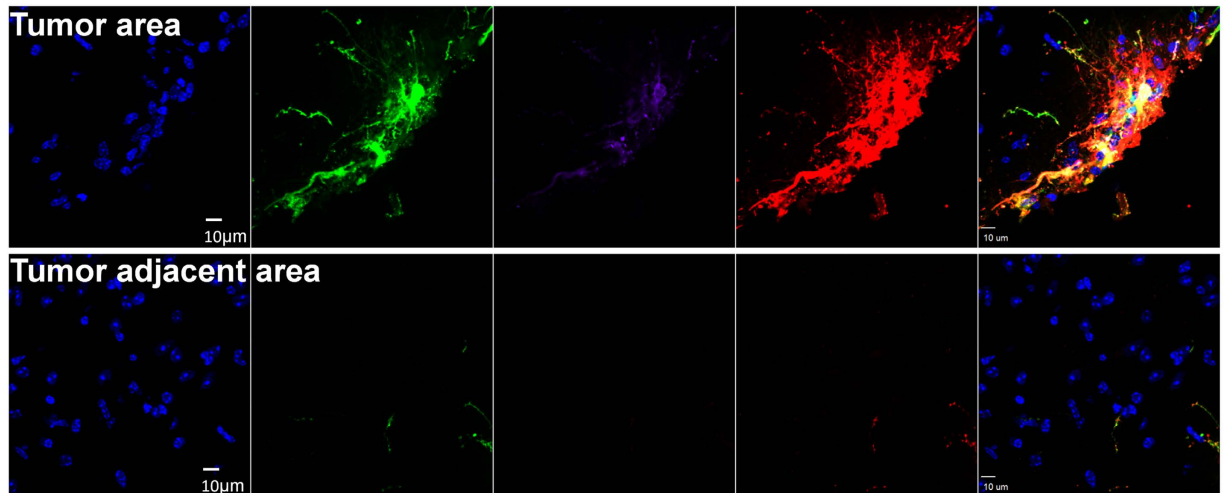
a. IL13R α 2.KDU251MG**b. IL13R α 2⁺ U251MG**

Figure 7. IL13R α 2-specific infection in xenograft model of glioma. Mouse brains were sectioned and stained for DAPI (Blue), GFP (viral infection), anti-GFP (Purple), and anti-human nestin (Red, tumor). **(a)** Immunohistochemistry analysis of IL13R α 2.KDU251MG cells implanted mice. There were no observable GFP-positive cells in tumor area. **(b)** Immunohistochemistry analysis of IL13R α 2⁺ U251MG cell implanted mice. While GFP positive cells were observed in tumor area, there was not observable virus infected cells in the tumor adjacent area, indicating the infectivity of Ad5FFcFv47-CMV-GFP is highly specific to the IL13R α 2 expression level. Scale bar is 10 μ m.

patient-derived GBM43 and GBM39 glioma cells were obtained from Dr. Charles D. James from Northwestern University Feinberg School of Medicine. Cells were propagated via serial passaging in the flank of nude mice.

Cloning the scFv fragment of mAb IL13R α 2 (clone 47). The heavy and light chains of monoclonal antibody (clone 47) against human IL13R α 2¹⁹ were cloned using a set of gene specific primers (Supplementary Table 1) for immunoglobulin heavy and light chains which were published previously^{24,25}. The heavy and light chain cDNA were re-amplified to introduce *NcoI* and *HindIII* and *MluI* and *NotI* restriction sites, respectively for subsequent subcloning into phagemid vector pSEX 81 as previously described⁴⁴. XL1 blue cells were transformed by electroporation with a library of scFv encoded by phage mid vector and phages were generated as previously described²⁵. Selection of immune reactive phages was performed in three rounds using recombinant human IL13R α 2hFc fusion protein (rhIL13R α 2hFc) (R&D Systems) coated on 96-well plates. Human IgG served as a negative control. DNA of bacterial clones infected with positively selected phages was screened by PCR for the presence of proper size PCR products which consisted of full size scFv and plasmid sequences upstream and downstream of the scFv insert. Eight PCR products of approximately 1000 bp were purified for subsequent sequence analysis. The obtained scFv against human IL13R α 2 was designated as scFv47 elsewhere in the text reflecting the name of original clone of monoclonal antibody from which it was derived. In order to generate soluble protein, the cDNA encoding for scFv47 was re-cloned in a bacterial expression cassette as described previously^{24,44}. XL-1 blue cells were utilized to generate soluble protein according to established protocol²⁴.

ELISA. Supernatant containing phages from all rounds of biopanning were analyzed for their binding specificity to rhIL13R α 2 protein using plate ELISA. Wells coated with human IgG were used as negative controls. Specifically, wells were blocked for 30 min with 2% non-fat dry milk and supernatants containing phages were applied at different dilutions to the wells. After a 30-min incubation with shaking and another 1.5 h without shaking, unbound phages were washed with PBS/0.05% Tween 20 and anti-M13 antibodies conjugated with peroxidase (Amersham Pharmacia Biotech, Uppsala, Sweden) (diluted 1/2000 in the 2% non-fat dry milk) were added. After intensive washing with PBS/0.05% Tween 20, the plates were developed with 1-step slow 3,3',5,5'-Tetramethyl-benzidine (TMB) substrate for ELISA and read at OD₄₅₀ after the reaction was stopped with 3 N hydrochloric acid.

For analysis of soluble scFv47 for binding with rhIL13R α 2, clone of XL1 blue *E. coli* transformed with expression vector encoding for scFv47 gene tagged with c-myc and 6 His sequence was grown overnight in LB medium supplemented with 100 mM glucose and 100 μ g/ml ampicillin (LB_{GA}) as previously described²⁴. Overnight culture was diluted 1/100 and grown in 50 ml of LB_{GA} media with shaking (250 rpm at 37 °C) until density OD₆₀₀ = 0.8. After incubation, the bacterial culture was centrifuged at 1500g for 10 min. The pellet was re-suspended in 50 ml LB_{GA} media containing 0.4 M sucrose and 0.1 mM IPTG and grown for 20 h at room temperature (RT). The purified soluble scFv47 was obtained from the culture supernatant using Co resin per manufacturer's recommendation (Thermo Scientific, Rockford, IL). Purified scFv47 was tested in plate ELISA and affinity studies as described below. 96 well plates coated with rhIL13R α 1 or rhIL13R α 2 protein at 1 μ g/ml were blocked with 2% non-fat dry milk and scFv47 at various concentrations was applied for 2 h at RT. After washing, anti-c-myc monoclonal antibodies (clone 9E10) at 1 μ g/ml were added for 1 h incubation, washed of unbound antibodies and subsequently developed with anti-mouse antibodies conjugated with alkaline phosphatase (Sigma Aldrich, St.Louis, MO). The reaction was then read in spectrophotometer at OD₄₀₅.

Competitive assay. Easy wash 96 well plates (Thermo Scientific, Rockford, IL) were coated with 100 μ l of IL13R α 2hFc fusion protein at concentration of 1 μ g/ml and stored overnight at + 4 °C. After washing with PBS/0.05% Tween 20, wells were blocked with 2% non-fat dry milk and incubated with either PBS or mouse IgG1 as negative controls or a panel of anti-IL13R α 2 mAbs recognizing non-overlapping epitopes with parental mAbIL13R α 2 (clone 47)¹⁹ at concentration of 2 μ g/ml for 1 h. After washing of unbound antibodies, the supernatant containing phages after the third round of biopanning was applied to all wells for 2 h at RT. Bound phages were detected as described in the phage ELISA section above.

Surface Plasmon Resonance and Kinetic Analysis. The affinity and rate of interaction between the scFv47 and target (rhIL13R α 2) were measured with a Biacore 3000 biosensor through surface plasmon resonance (SPR) as we previously described¹⁹. The estimation of kinetic parameters was performed by repetitive injections of a range of target concentrations over the immobilized rhIL13R α 2. Each data set, consisting of sensograms of increasing scFv47 concentrations over the same level of immobilized rhIL13R α 2, was analyzed using various kinetic models. The BIAevaluation v 4.1 software was used for data analysis. Affinity constants were estimated by curve fitting using a 1:1 binding model. Sensogram association and dissociation curves were fit locally or globally. The rate of complex formation during the sample injection is described by an equation of the following type: $dR/dt = k_a C (R_{max} - R) - k_d R$ (for a 1:1 interaction) (R = SPR signal in RU; C = concentration of analyte; R_{max} = maximum analyte binding capacity in RU; dR/dt = rate of change of SPR signal). The early binding phase (300 sec) was used to determine the association constant (k_a) between mAb and target. The dissociation phase (k_d) was measured using the rate of decline in RU on introduction of free buffer at the end of target injections. Data were simultaneously fit by the software program (global fitting algorithm) and the dissociation constant (K_D) of the complexes was determined as the ratio k_a/k_d . For quantitative analysis, 3 independent replicates were performed for each sample. Data are expressed as mean \pm SEM.

Adenoviral genetic modifications and virus production. In order to generate a fiber shuttle vector, the pKan 566 adenoviral genome (kindly gifted from Dr. Curiel at Washington University in Saint Louis), which contains the gene of fiber fibrin, was used. The cDNA of scFv47, was inserted at the C-terminal of fiber fibrin by using a standard molecular technique, resulting in pKan-scFv47FF^{21,27,45}. With this fiber shuttle vector, recombinant HA5 backbones containing an enhanced green fluorescence protein (eGFP) under the control of the CMV promoter in the E1 deleted region (replication incompetent Ad5scFv47FF-CMV-GFP) were generated. The recombinant virus was rescued in HEK293-F28 cells and then propagated in HEK293 cells. Viruses were purified by two rounds of CsCl gradient ultracentrifugation as previously described²⁷.

Flow Cytometry. In order to analyze expression of IL13R α 2 on the cell surface, U87MG and U251MG glioma cell lines were stained with IL13R α 2(clone 47) mAb at 2 μ g/mL, followed by goat anti-mouse Alexa Fluor 647 (1:500). All staining procedures were performed on ice. Transduction of glioma cells with either control or Ad5FFscFv47 virus was assayed based on GFP expression. Samples were analyzed using the BD FACS Canto flow cytometer and FACS DiVaTM software.

PCR analysis. Viral DNA contained in Ad5-CMV-GFP and Ad5FFscFv47-CMV-GFP viral particles (10^9) was used as the template for PCR amplification using a HA5V5-specific primer set: forward: 5'-CAGCTCCATCTCCTAACTGT-3' and reverse: 5'-TTCTTGGGCAATGTATGAAA-3' and scFv47-specific primer set: forward: 5'-CAGGTCCAACCTGCAGCA-3' and reverse: 5'-TTTGATTTCAGCTTGGT-3'.

Western blot. The supernatant of XL1-blue cells containing the scFv47 or purified adenoviral particles were diluted in Laemmli buffer, incubated either at room temperature (unboiled samples) or at 95 °C (boiled samples) for 10 mins and loaded to a 7.5% SDS-polyacrylamide gel (Bio-Rad, Hercules, CA). After electrophoretic separation, samples were transferred onto a PVDF membrane and detected with an anti-myc mAb (9E10) at 1 μ g/ml for detection of soluble scFv47 or an anti-fiber tail mAb4D2 (1:3,000) (Thermo Scientific, Rockford, IL) followed by HRP tagged anti-mouse IgG secondary antibody (1:5,000) (Santa Cruz, CA, USA).

Quantitative real-time real time-polymerase chain reaction (qRT-PCR) analysis. The expression of IL13R α 2 in U87MG cells growing as an adherent culture or as neurospheres was characterized by qRT-PCR. RNA was isolated from glioma cells using RNeasy plus kit (Qiagen, Boston, MA) and was reverse-transcribed using iScript cDNA conversion kit (Biorad, CA, USA). qRT-PCR reaction was

carried out using SYBR green qPCR kit (Biorad, CA, USA) using following primers: GAPDH forward primer: 5'-GGTCCGAGTCAACGGATTGG-3'; GAPDH reverse primer: 5'-CATGGGTGGAATCATATTGGAAC-3'; IL13R α 2 forward primer: 5'-TTGGGACCTATTCCAGCAAGGTGT-3'; IL13R α 2 reverse primer: 5'-CACTCCACTCACTCCAAATCCCGT-3'. For relative quantification of IL13R α 2 expression, all IL13R α 2 values were normalized to the glyceraldehyde 3 phosphate dehydrogenase (GAPDH) expression values. Data analysis was performed using the $2^{-\Delta\Delta CT}$ method⁴⁶.

Viral Infectivity Analysis. Cells (3×10^5) were plated in 24 well plates and incubated overnight. For monoclonal anti-IL13R α 2 mediated inhibition assay, 2 μ g of anti-IL13R α 2 mAb (clone 47) was added to the cells and they were allowed to incubate for 1 h at 4 °C. Each virus sample was diluted to a multiplicity of infection of 300 viral particles (vp)/cell in 500 μ l of infection media containing 2% FBS in DMEM. The cells were infected with Ad5FFscFv47-CMV-GFP for 2 h at 37 °C. Virus containing media was then replaced with the fresh media containing 2% FBS and cells were kept at 37 °C in atmospheric humidification containing 5% CO₂ for 3 days, then flow cytometry analysis was performed as described above.

Animal Experiments. Male athymic/nude mice were obtained from the Charles River Laboratory (Wilmington, MA) and were cared for in accordance with a study-specific animal protocol approved by the University of Chicago Institutional Animal Care and Use Committee. For tumor cell implantation, mice were anesthetized with a ketamine/xylazine mixture (115/17 mg/kg). A burr hole was made to allow for a stereotactic injection that was performed with a 10 μ l Hamilton syringe (Hamilton, Reno, NV). The needle was mounted to a mouse-specific stereotactic, Harvard Apparatus (Holliston, MA) and was then inserted through the burr hole to an anatomical position of 3 mm in depth. Specifically, mice were implanted with intracranial glioma xenograft of IL13R α 2⁺ U251MG or with IL13R α 2.KDU251MG cells (5.0×10^5 cells). Ten days post-tumor implantation, mice were injected in the same coordinates as tumor cells with 10^9 vp of Ad5FFscFv47-CMV-GFP in 5 μ l of PBS and sacrificed 3 days later.

Confocal microscopy. Flash frozen brain tumor tissues were cut to a thickness of 10 μ m. Tissue sections were fixed and stained for human nestin to visualize U251 glioma cells using mouse mAb (R&D systems, Minneapolis, MN). To analyze transduction of glioma cells with Ad5FFscFv47-CMV-GFP, transgene GFP expression was revealed using biotinylated anti-GFP antibody (Life technologies, Eugene, OR) and streptavidin-Alexa Fluor647 (Jackson ImmunoResearch, West Grove, PA). Cell nuclei were visualized using DAPI nuclear stain. Confocal microscopic images were captured with a 3i Marianas Yokogawa-type spinning disk confocal microscope with an Evolve EM-CCD camera (Photometrics, Tucson, AZ) running SlideBook v5.5 software (Intelligent Imaging Innovations, Denver, CO).

Statistical Analysis. All statistical analyses were performed using Graphpad Prism 4 (GraphPad Software Inc., San Diego CA). Sample size for each group was ≥ 3 and numerical data were reported as Mean \pm SEM. Student's t test was used for comparisons between two groups, and ANOVA with Tukey's post hoc test was used for comparisons between more than two groups. All reported *p* values were two-sided and were considered to be statistically significant at **p* < 0.05, ***p* < 0.01, ****p* < 0.001.

References

1. Stupp, R. *et al.* Radiotherapy plus concomitant and adjuvant temozolomide for glioblastoma. *N Engl J Med* **352**, 987–996, doi: 10.1056/NEJMoa043330 (2005).
2. Zheng, S. *et al.* Fiber-knob modifications enhance adenoviral tropism and gene transfer in malignant glioma. *The journal of gene medicine* **9**, 151–160, doi: 10.1002/jgm.1008 (2007).
3. Van Houdt, W. J. *et al.* The human survivin promoter: a novel transcriptional targeting strategy for treatment of glioma. *J Neurosurg* **104**, 583–592, doi: 10.3171/jns.2006.104.4.583 (2006).
4. Ulasov, I. V. *et al.* Comparative evaluation of survivin, midkine and CXCR4 promoters for transcriptional targeting of glioma gene therapy. *Cancer biology & therapy* **6**, 679–685 (2007).
5. Ulasov, I. V. *et al.* Survivin-driven and fiber-modified oncolytic adenovirus exhibits potent antitumor activity in established intracranial glioma. *Human gene therapy* **18**, 589–602, doi: 10.1089/hum.2007.002 (2007).
6. Ulasov, I. V. *et al.* Combination of adenoviral virotherapy and temozolomide chemotherapy eradicates malignant glioma through autophagic and apoptotic cell death *in vivo*. *British journal of cancer* **100**, 1154–1164, doi: 10.1038/sj.bjc.6604969 (2009).
7. Chakravarti, A. *et al.* Quantitatively determined survivin expression levels are of prognostic value in human gliomas. *Journal of clinical oncology: official journal of the American Society of Clinical Oncology* **20**, 1063–1068 (2002).
8. Uematsu, M. *et al.* Prognostic significance of the immunohistochemical index of survivin in glioma: a comparative study with the MIB-1 index. *Journal of neuro-oncology* **72**, 231–238, doi: 10.1007/s11060-004-2353-3 (2005).
9. Choi, B. D. *et al.* Systemic administration of a bispecific antibody targeting EGFRvIII successfully treats intracerebral glioma. *Proceedings of the National Academy of Sciences of the United States of America* **110**, 270–275, doi: 10.1073/pnas.1219817110 (2013).
10. Kong, S. *et al.* Suppression of human glioma xenografts with second-generation IL13R-specific chimeric antigen receptor-modified T cells. *Clinical cancer research: an official journal of the American Association for Cancer Research* **18**, 5949–5960, doi: 10.1158/1078-0432.CCR-12-0319 (2012).
11. Krebs, S. *et al.* T cells redirected to interleukin-13R α 2 with interleukin-13 mutein–chimeric antigen receptors have anti-glioma activity but also recognize interleukin-13R α 1. *Cytotherapy* **16**, 1121–1131, doi: 10.1016/j.jcyt.2014.02.012 (2014).
12. Riccione, K. *et al.* Generation of CAR T Cells for Adoptive Therapy in the Context of Glioblastoma Standard of Care. *Journal of visualized experiments: JoVE*, doi: 10.3791/52397 (2015).
13. Zitron, I. M. *et al.* Targeting and killing of glioblastoma with activated T cells armed with bispecific antibodies. *BMC cancer* **13**, 83, doi: 10.1186/1471-2407-13-83 (2013).
14. Debinski, W., Obiri, N. I., Powers, S. K., Pastan, I. & Puri, R. K. Human glioma cells overexpress receptors for interleukin 13 and are extremely sensitive to a novel chimeric protein composed of interleukin 13 and pseudomonas exotoxin. *Clinical cancer research: an official journal of the American Association for Cancer Research* **1**, 1253–1258 (1995).
15. Joshi, B. H., Plautz, G. E. & Puri, R. K. Interleukin-13 receptor alpha chain: a novel tumor-associated transmembrane protein in primary explants of human malignant gliomas. *Cancer Res* **60**, 1168–1172 (2000).

16. Jarboe, J. S., Johnson, K. R., Choi, Y., Lonser, R. R. & Park, J. K. Expression of interleukin-13 receptor alpha2 in glioblastoma multiforme: implications for targeted therapies. *Cancer Res* **67**, 7983–7986, doi: 10.1158/0008-5472.CAN-07-1493 (2007).
17. Brown, C. E. *et al.* Glioma IL13R α 2 Is Associated with Mesenchymal Signature Gene Expression and Poor Patient Prognosis. *PLoS One* **8**, e77769, doi: 10.1371/journal.pone.0077769 (2013).
18. Ulasov, I. V., Tyler, M. A., Han, Y., Glasgow, J. N. & Lesniak, M. S. Novel recombinant adenoviral vector that targets the interleukin-13 receptor alpha2 chain permits effective gene transfer to malignant glioma. *Human gene therapy* **18**, 118–129, doi: 10.1089/hum.2006.146 (2007).
19. Balyasnikova, I. V. *et al.* Characterization and immunotherapeutic implications for a novel antibody targeting interleukin (IL)-13 receptor alpha2. *The Journal of biological chemistry* **287**, 30215–30227, doi: 10.1074/jbc.M112.370015 (2012).
20. Bartolomé, R. A. *et al.* IL13 Receptor α 2 Signaling Requires a Scaffold Protein, FAM120A, to Activate the FAK and PI3K Pathways in Colon Cancer Metastasis. *Cancer Res* **75**, 2434–2444, doi: 10.1158/0008-5472.can-14-3650 (2015).
21. Hedley, S. J. *et al.* An adenovirus vector with a chimeric fiber incorporating stabilized single chain antibody achieves targeted gene delivery. *Gene Ther* **13**, 88–94, doi: 10.1038/sj.gt.3302603 (2006).
22. Krasnykh, V., Belousova, N., Korokhov, N., Mikheeva, G. & Curiel, D. T. Genetic targeting of an adenovirus vector via replacement of the fiber protein with the phage T4 fibrin. *Journal of virology* **75**, 4176–4183, doi: 10.1128/JVI.75.9.4176-4183.2001 (2001).
23. Kaliberov, S. A. *et al.* Adenoviral targeting using genetically incorporated camelid single variable domains. *Laboratory investigation: a journal of technical methods and pathology* **94**, 893–905, doi: 10.1038/labinvest.2014.82 (2014).
24. Kipriyanov, S. M., Kupriyanova, O. A., Little, M. & Moldenhauer, G. Rapid detection of recombinant antibody fragments directed against cell-surface antigens by flow cytometry. *Journal of immunological methods* **196**, 51–62 (1996).
25. Toleikis, L., Broders, O. & Dubel, S. Cloning single-chain antibody fragments (scFv) from hybridoma cells. *Methods in molecular medicine* **94**, 447–458 (2004).
26. Curiel, D. T. Strategies to adapt adenoviral vectors for targeted delivery. *Annals of the New York Academy of Sciences* **886**, 158–171 (1999).
27. Kim, J. W. *et al.* A Genetically Modified Adenoviral Vector with a Phage Display Derived Peptide Incorporated into Fiber Fibrin Chimera Prolongs Survival in Experimental Glioma. *Human gene therapy*, doi: 10.1089/hum.2015.008 (2015).
28. Bergelson, J. M. *et al.* Isolation of a common receptor for Coxsackie B viruses and adenoviruses 2 and 5. *Science (New York, N.Y.)* **275**, 1320–1323 (1997).
29. Tomko, R. P., Xu, R. & Philipson, L. HCAR and MCAR: the human and mouse cellular receptors for subgroup C adenoviruses and group B coxsackieviruses. *Proceedings of the National Academy of Sciences of the United States of America* **94**, 3352–3356 (1997).
30. Fuxe, J. *et al.* Expression of the coxsackie and adenovirus receptor in human astrocytic tumors and xenografts. *International journal of cancer. Journal international du cancer* **103**, 723–729, doi: 10.1002/ijc.10891 (2003).
31. Asaoka, K., Tada, M., Sawamura, Y., Ikeda, J. & Abe, H. Dependence of efficient adenoviral gene delivery in malignant glioma cells on the expression levels of the Coxsackievirus and adenovirus receptor. *J Neurosurg* **92**, 1002–1008, doi: 10.3171/jns.2000.92.6.1002 (2000).
32. Allen, C. *et al.* Interleukin-13 displaying retargeted oncolytic measles virus strains have significant activity against gliomas with improved specificity. *Mol Ther* **16**, 1556–1564, doi: 10.1038/mt.2008.152 (2008).
33. Kioi, M., Seetharam, S. & Puri, R. K. Targeting IL-13R α 2-positive cancer with a novel recombinant immunotoxin composed of a single-chain antibody and mutated Pseudomonas exotoxin. *Mol Cancer Ther* **7**, 1579–1587, doi: 10.1158/1535-7163.mct-07-2131 (2008).
34. Kunwar, S. *et al.* Phase III randomized trial of CED of IL13-PE38QQR vs Gliadel wafers for recurrent glioblastoma. *Neuro-oncology* **12**, 871–881, doi: 10.1093/neuonc/nop054 (2010).
35. Auffinger, B., Spencer, D., Pytel, P., Ahmed, A. U. & Lesniak, M. S. The role of glioma stem cells in chemotherapy resistance and glioblastoma multiforme recurrence. *Expert review of neurotherapeutics*, 1–12, doi: 10.1586/14737175.2015.1051968 (2015).
36. Brown, C. E. *et al.* Stem-like tumor-initiating cells isolated from IL13R α 2 expressing gliomas are targeted and killed by IL13-zetakine-redirected T Cells. *Clinical cancer research: an official journal of the American Association for Cancer Research* **18**, 2199–2209, doi: 10.1158/1078-0432.ccr-11-1669 (2012).
37. Ogden, A. T. *et al.* Identification of A2B5+CD133- tumor-initiating cells in adult human gliomas. *Neurosurgery* **62**, 505–514; discussion 514–505, doi: 10.1227/01.neu.0000316019.28421.95 (2008).
38. Jarboe, J. S., Johnson, K. R., Choi, Y., Lonser, R. R. & Park, J. K. Expression of Interleukin-13 Receptor α 2 in Glioblastoma Multiforme: Implications for Targeted Therapies. *Cancer Research* **67**, 7983–7986, doi: 10.1158/0008-5472.can-07-1493 (2007).
39. Gan, H. K., Kaye, A. H. & Luwor, R. B. The EGFRvIII variant in glioblastoma multiforme. *Journal of clinical neuroscience: official journal of the Neurosurgical Society of Australasia* **16**, 748–754, doi: 10.1016/j.jocn.2008.12.005 (2009).
40. Beatty, G. L. *et al.* Mesothelin-specific chimeric antigen receptor mRNA-engineered T cells induce anti-tumor activity in solid malignancies. *Cancer immunology research* **2**, 112–120, doi: 10.1158/2326-6066.CIR-13-0170 (2014).
41. Kane, J. R. *et al.* Sui generis: gene therapy and delivery systems for the treatment of glioblastoma. *Neuro-oncology* **17** Suppl 2, ii24–ii36, doi: 10.1093/neuonc/nou355 (2015).
42. Patel, M. A., Kim, J. E., Ruzevick, J., Li, G. & Lim, M. The future of glioblastoma therapy: synergism of standard of care and immunotherapy. *Cancers* **6**, 1953–1985, doi: 10.3390/cancers6041953 (2014).
43. Yan, K. *et al.* Glioma cancer stem cells secrete Gremlin1 to promote their maintenance within the tumor hierarchy. *Genes & development* **28**, 1085–1100, doi: 10.1101/gad.235515.113 (2014).
44. Balyasnikova, I. V. *et al.* Cloning and characterization of a single-chain fragment of monoclonal antibody to ACE suitable for lung endothelial targeting. *Microvascular research* **80**, 355–364, doi: 10.1016/j.mvr.2010.09.007 (2010).
45. Wilkinson-Ryan, I. *et al.* Incorporation of porcine adenovirus 4 fiber protein enhances infectivity of adenovirus vector on dendritic cells: implications for immune-mediated cancer therapy. *PLoS One* **10**, e0125851, doi: 10.1371/journal.pone.0125851 (2015).
46. Livak, K. J. & Schmittgen, T. D. Analysis of relative gene expression data using real-time quantitative PCR and the 2^{(-Delta Delta C(T))} Method. *Methods* **25**, 402–408, doi: 10.1006/meth.2001.1262 (2001).

Acknowledgements

Authors thank the Frank W. Fitch Monoclonal Antibody Facility of the University of Chicago for providing anti-*c-myc* monoclonal antibody (clone 9E10). We are also thankful to the Biophysics Core Facility of the University of Chicago for the valuable technical assistance and guidance provided for affinity studies. This work was supported in part by the National Institute of Health (1R21NS089802 and 5R01CA122930). JSY was supported in part by the NIH NIDDK grant #2T35DK062719-27 and the Neurosurgery Research and Education Foundation Medical Student Summer Research Fellowship.

Author Contributions

J.W.K. – Conception and design, analysis and interpretation, data collection, writing the article and statistical analysis. J.S.Y. – Data collection and writing the article. E.S. – Data collection, analysis and interpretation. D.K.

– Data collection. M.S.L. – Critical revision of the article, obtained funding. I.V.B. – Conception and design, analysis and interpretation, data collection, writing the article, obtained funding, and overall responsibility and final approval of the article.

Additional Information

Supplementary information accompanies this paper at <http://www.nature.com/srep>

Competing financial interests: IB and ML have patent applications in the field of IL13R α 2-targeted therapies.

How to cite this article: Kim, J. W. *et al.* A novel single-chain antibody redirects adenovirus to IL13R α 2-expressing brain tumors. *Sci. Rep.* 5, 18133; doi: 10.1038/srep18133 (2015).



This work is licensed under a Creative Commons Attribution 4.0 International License. The images or other third party material in this article are included in the article's Creative Commons license, unless indicated otherwise in the credit line; if the material is not included under the Creative Commons license, users will need to obtain permission from the license holder to reproduce the material. To view a copy of this license, visit <http://creativecommons.org/licenses/by/4.0/>